

WATEROUS

Form Number F-2901

Issue Date: Aug 14, 2020

Revision Date: Aug 16, 2021

Heavy-Duty Model T-Transmissions

Overhaul Instructions

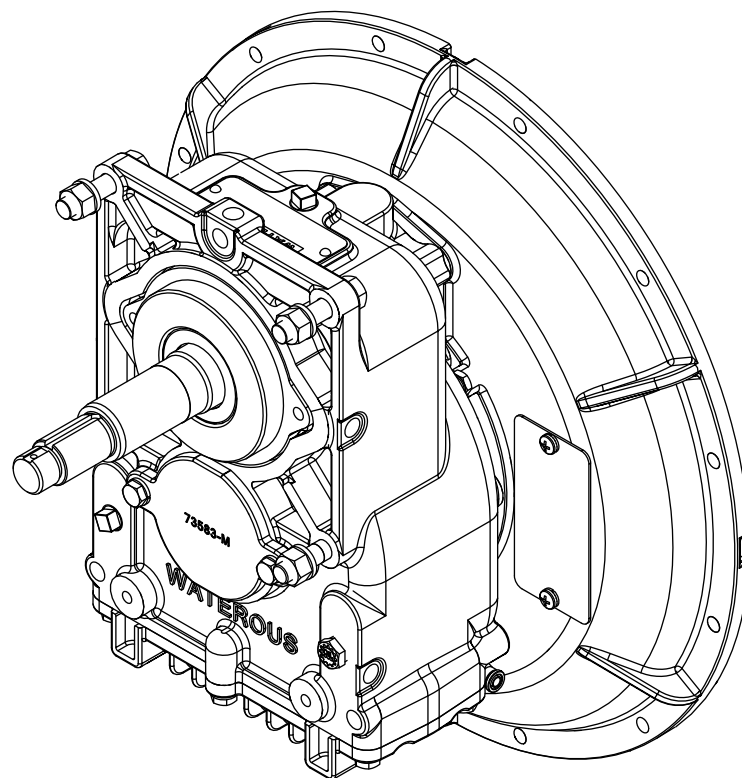
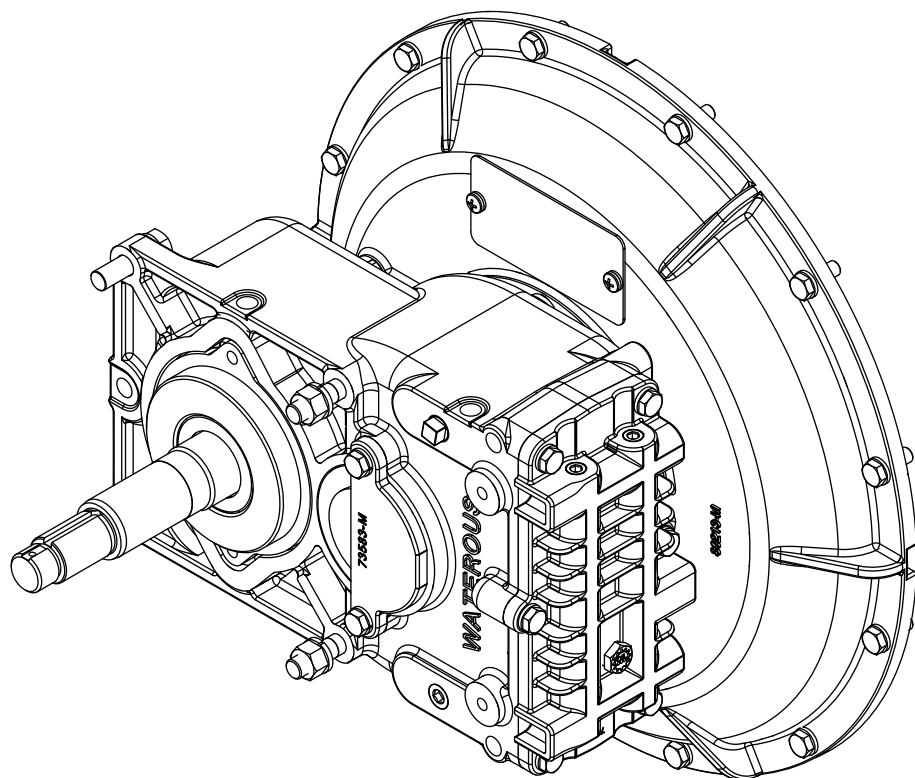


Table of Contents

Safety	4	Assembly	15
Safety Precautions	4	Preparing to Assemble the Transmission	15
Introduction	5	Tools Required	15
Using this Document	5	Best Practices	15
Viewing the Document Electronically	5	Assembling the Transmission Components	15
Printing the Document	5	Installing the Transmission	15
Symbols	5	Understanding the Illustrations	15
Identifying Exterior Components—Pump Side	6	CXN and CXV Pumps with One Piece Impeller Shaft	16
Identifying Exterior Components—Input Side	7	Assembling the Bearing Housing	17
Identifying Exterior Components—Oil-Cooler Side	8	Assembling the Driven Shaft	18
Disassembly	9	Installing the Driven Gear Assembly	20
Preparing to Disassemble the Transmission	9	Installing the Drive Shaft Components	21
Tools Required	9	Installing the Bearing Cover	22
Preparing the Apparatus	9	Installing the Bottom Cover	23
Best Practices	9	Installing the Oil Seal	24
Removing the Transmission	9	Installing the Bellhousing Adapter	25
Disassembling the Transmission Components	9	CGV and CGVR Pumps with One Piece Impeller Shaft	26
Draining the Gear Oil	10	Assembling the Bearing Housing	27
Removing the Bell Housing	11	Assembling the Driven Shaft	28
Removing the Bottom Cover	12	Installing the Driven Gear Assembly	30
Removing the Drive Components	13	Installing the Drive Shaft Components	31
Removing the Impeller Shaft Assembly	14	Installing the Bearing Cover	32
		Installing the Bottom Cover	33
		Installing the Oil Seal	34
		Installing the Bellhousing Adapter	35
		RF600 Pumps with One Piece Impeller Shaft	36
		Assembling the Bearing Housing	37
		Assembling the Driven Shaft	38
		Installing the Driven Gear Assembly	40
		Installing the Drive Shaft Components	41
		Installing the Bearing Cover	42
		Installing the Bottom Cover	43
		Installing the Oil Seal	44
		Installing the Bellhousing Adapter	45
		Adding Oil to the Transmission	46

Safety Precautions

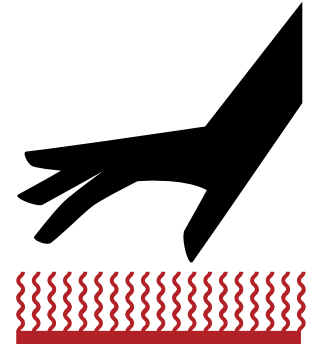
- Read and understand this document before you begin the overhaul.
- Read and understand all the notices and safety precautions.
- Be aware that these instructions are only guidelines and are not meant to be definitive. Contact Waterous when you have questions.
- Do not overhaul this equipment if you are not familiar with the tools and skills needed to safely perform required procedures.
- Do not modify the equipment.
- Waterous reserves the right to make modifications to the instructions without notice.



WARNING

Hot Surface

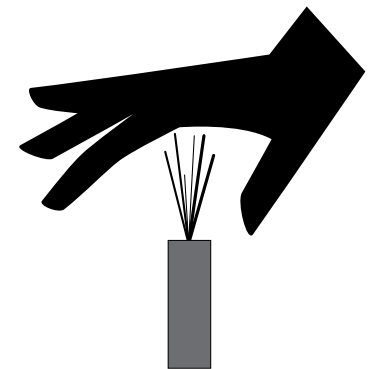
- Hot surface can burn you.
- Do not touch the surface during operation—allow it to cool after operating.



WARNING

High Pressure

- Liquid ejected at high pressure can cause serious injury.
- Drain the pump after use and before servicing.



Use this document to overhaul your Waterous equipment. Please understand the following conditions:

- Be aware that these instructions are only guidelines and are not meant to be definitive. Contact Waterous when you have questions.
- Understand that your configuration may require additional steps, that are not described in the illustrations or instruction, to perform the overhaul.
- The equipment described in this document is intended to be overhauled by a person or persons with the necessary skills and knowledge to perform the overhaul.

This document is divided into the following sections:

SAFETY

This section describes general precautions and alert symbols that are in this document.

INTRODUCTION

This section is an overview of the document.

DISASSEMBLY

This section describes disassembly procedures.

ASSEMBLY

This section describes assembly procedures.

Using this Document

Use the guidelines below when viewing this document.

Viewing the Document Electronically

- View this document in landscape orientation.
- Use the table of contents to navigate directly to that section.
- Text **with this appearance** is linked to a reference.

Printing the Document

- The document is viewed the best when printed in color.
- The *print on both sides* and *flip on long edge* features can provide the best results.
- Use a 3-ring binder to store the document.

Symbols

Symbols are used to illustrate additional tools or operations that are required to complete the instruction.



Arbor press—This symbol tells you to use an arbor press to complete this step.



Discard—This symbol tells you to discard or recycle the part in accordance with local regulations.



Finger tight, then quarter turn—This symbol tells you to secure the hardware to finger tight, then use a wrench to turn the hardware an additional quarter turn.



High-pressure grease—This symbol tells you to apply high-pressure grease to the surfaces that you are pressing together.



Lubricant—This symbol tells you to apply an appropriate lubricant to the part.

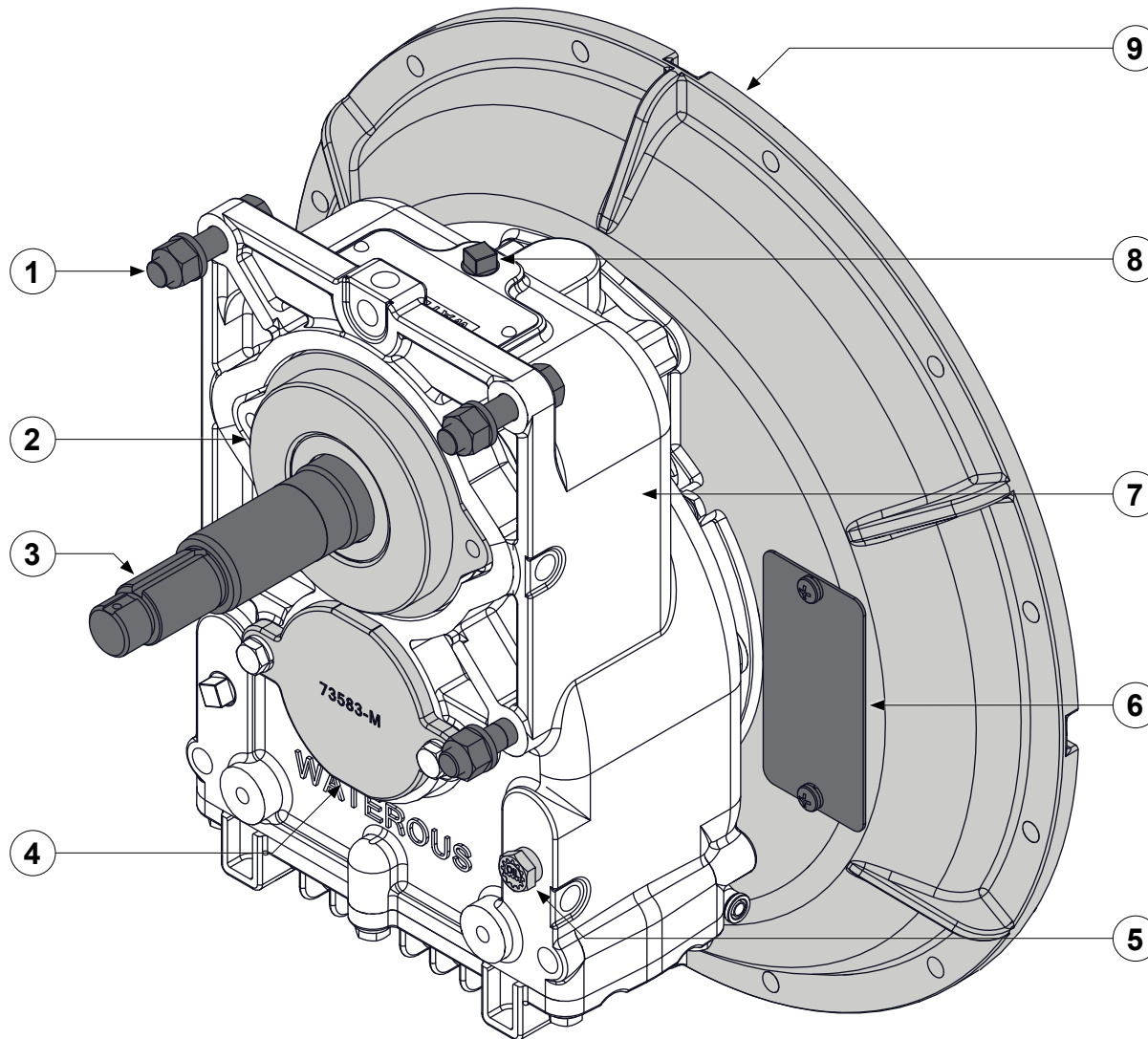


Sealant—This symbol tells you to apply an appropriate sealant to the part.



Torque to specification—This symbol tells you to torque the hardware to the specified value.

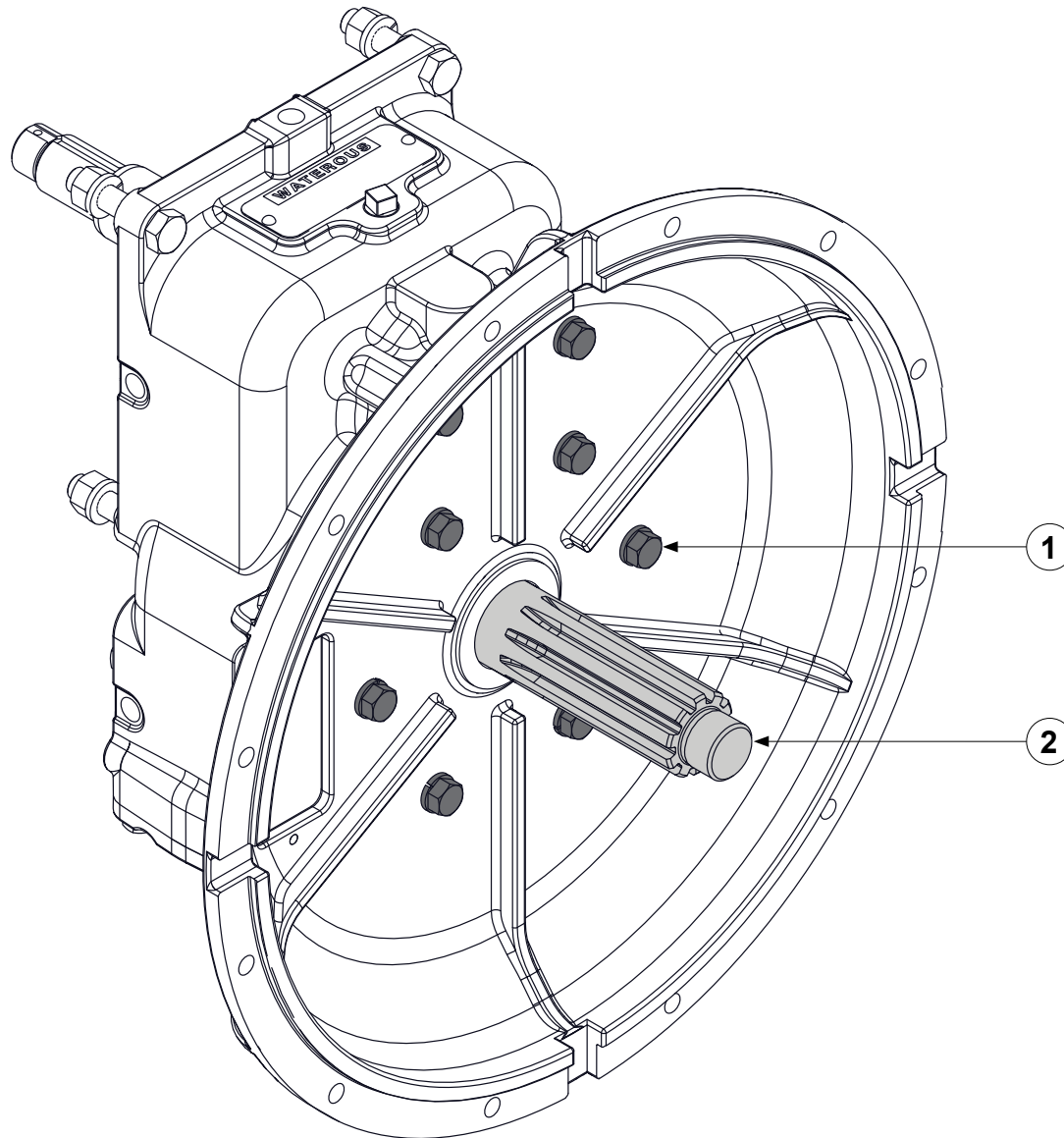
Identifying Exterior Components—Pump Side



Use the illustration to identify various components on the transmission.

- | | |
|---|-----------------------------------------------|
| 1 | Mounting hardware |
| 2 | Bearing housing |
| 3 | Impeller shaft |
| 4 | Bearing cover |
| 5 | Oil level plug—location varies by application |
| 6 | Serial number plate |
| 7 | Case |
| 8 | Oil fill plug—location varies by application |
| 9 | Bellhousing adapter |

Identifying Exterior Components—Input Side



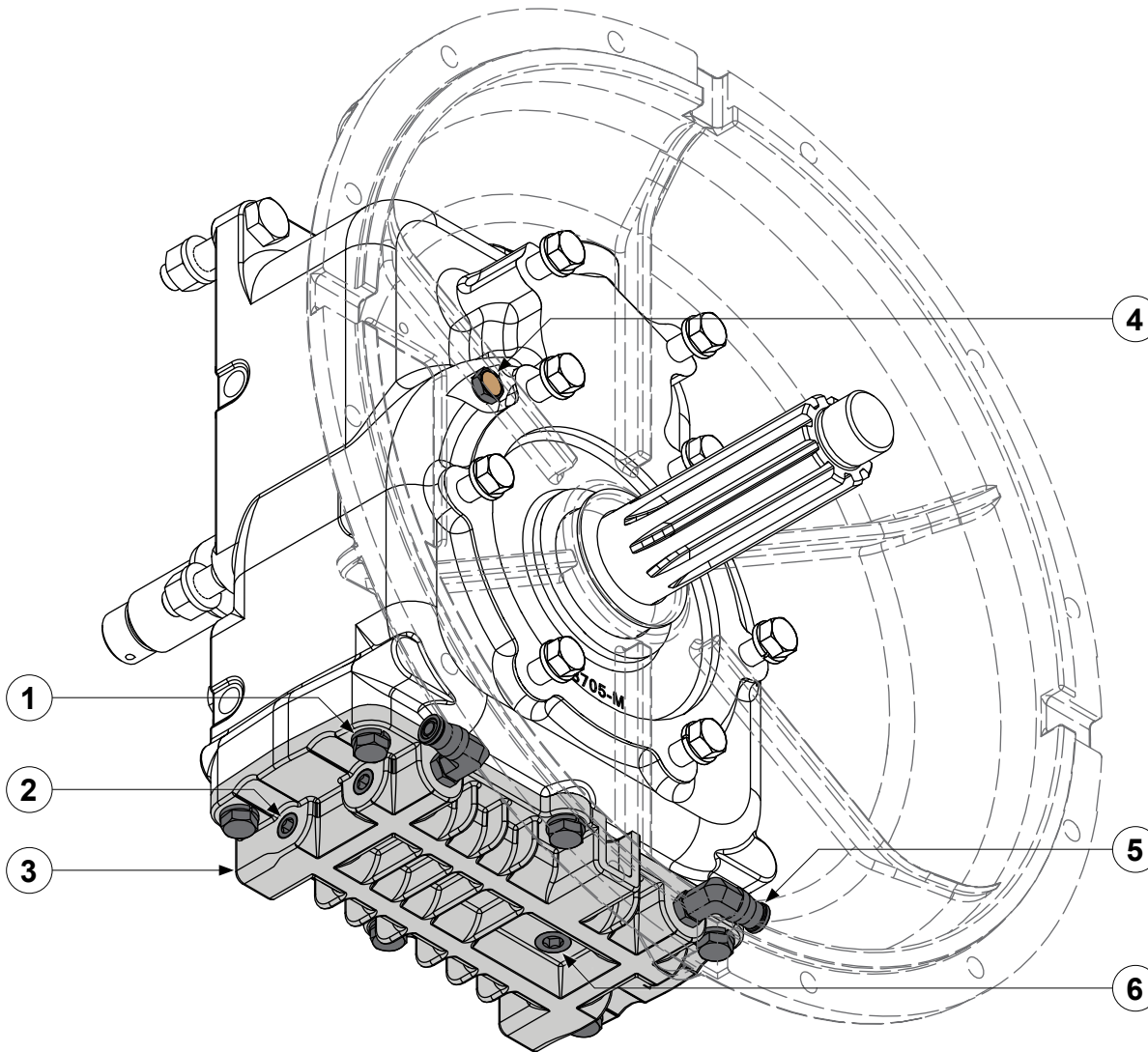
Use the illustration to identify various components on the transmission.

- | | |
|---|------------------------------|
| 1 | Drive shaft |
| 2 | Bellhousing adapter hardware |

Identifying Exterior Components—Oil-Cooler Side

Use the illustration to identify various components on the transmission.

- | | |
|---|-----------------------------------------------|
| 1 | Oil cooler mounting hardware |
| 2 | Oil cooler drain |
| 3 | Oil cooler pan |
| 4 | Breather—location varies by application |
| 5 | Oil cooler fitting |
| 6 | Oil drain plug—location varies by application |



Preparing to Disassemble the Transmission

- Read and understand the instructions before disassembling the equipment.
- Prepare a workspace suitable to accommodate and support the transmission.
- Gather the necessary tools, cleaning cloths, brushes, and penetrating fluids.
- Understand that your configuration may require additional steps that are not described in the illustrations or instructions to perform the disassembly.
- This equipment is intended to be disassembled by a person or persons with the basic knowledge of servicing similar equipment. Contact Waterous with questions.

Tools Required

- Typical automotive mechanics hand tools.
- Suitable arbor press.
- Suitable support and lifting equipment.

Preparing the Apparatus

- Park the apparatus on a level surface in a well-lit area.
- Engage the parking brake.
- Shut off the engine and remove the key from the ignition switch.
- Allow the apparatus to cool before servicing.

Best Practices

- Remove any dirt, sand, grease, or oil from the enclosure before you disassemble the transmission. Surface debris can transfer into the pump interior and prematurely wear internal parts.
- Only use a clean, lint-free cloth, a debris-free work surface, and properly maintained tools to perform the disassembly.
- Replace any gaskets and O-ring seals during the overhaul.
- Do not reuse the self-locking nuts.
- Apply penetrating oil to screws and nuts before disassembly.

Removing the Transmission

- Removing the transmission for overhaul varies by application. Your application may require components such as cooling lines, support brackets, plumbing connections, and other accessories be removed or disconnected before removing the transmission.
- Furthermore, some applications require you to remove the transmission and pump together before you can separate the transmission from the pump. Other applications allow you to separate the transmission without removing the pump from the apparatus. Refer to the pump instructions before proceeding.
- Record the process used to remove the equipment from the apparatus. Use this information to install the equipment into the apparatus after the overhaul.

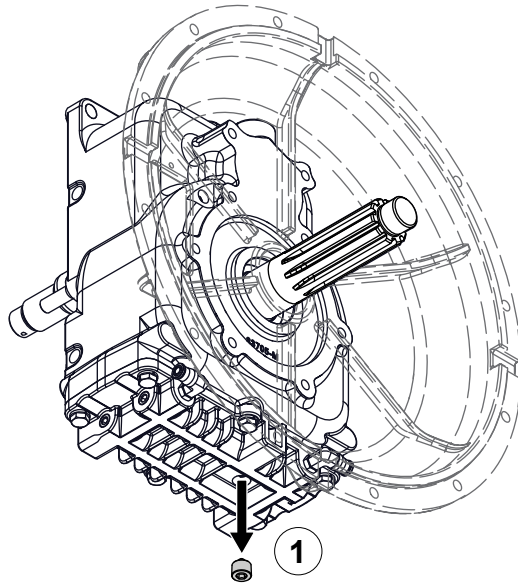
Disassembling the Transmission Components

- Refer to the service parts list (SPL) for part identification and disassemble order.
- The SPL specific to your application is determined by the following:
 - The pump connected to the transmission.
 - The transmission drive method.

Note: Documents specific to your application are available through the MyWaterous login at [Waterousco.com](https://www.waterousco.com) by entering the serial number for your system. Depending on the application, the serial number for your equipment is located on the operator panel, or the pump, or the transmission, or some combination of the three.

- Use established industry practices to disassemble the transmission.
- Record or mark components as you remove them to make sure that you install them in the same orientation.
- Discard or recycle drained fluids collected during the overhaul in accordance with your local regulations.

Draining the Gear Oil



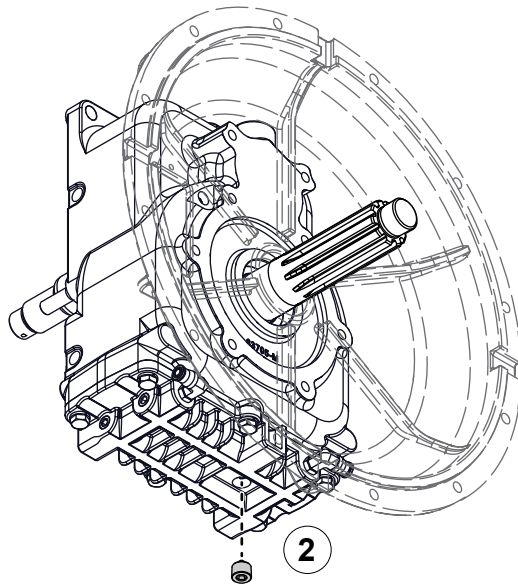
Use the illustrations and instructions to drain the gear oil.

Note: The illustrations may not represent the orientation of your specific transmission. Refer to the SPL for your application to locate the oil drain plug.

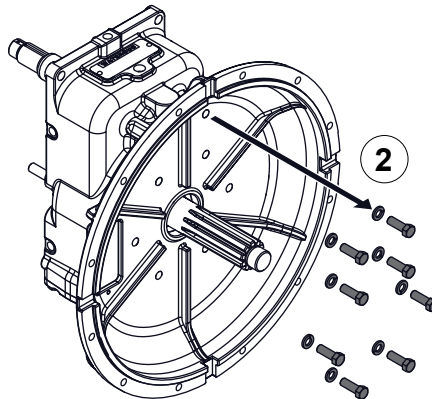
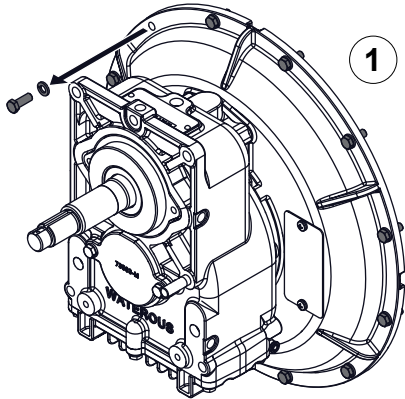
- 1 To drain the gear oil, do the following:
 - Locate the oil fill plug to approximate the amount of oil in the transmission.
 - Place a suitable container under the transmission to collect the drained oil.
 - Locate and remove the oil drain plug.
 - Allow the oil to drain.

- 2 Install the oil drain plug.

Note: Make sure that you do not over-tighten the plug.



Removing the Bell Housing



Use the illustrations and instructions to remove the bellhousing adapter.

- 1 To separate the transmission from the engine, do the following:
 - Drain any fluids, then disconnect the cooling lines that will be affected when you separate the transmission and engine.
 - Remove the hardware securing the bellhousing adapter to the engine.

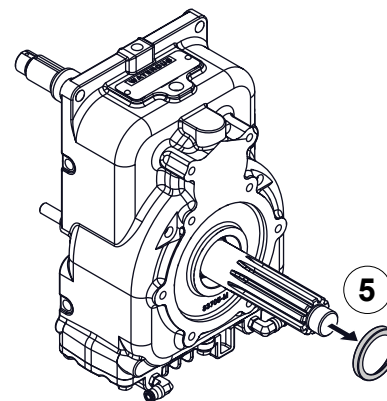
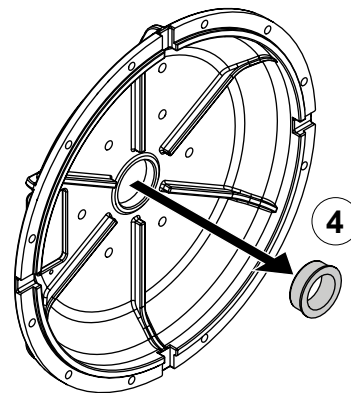
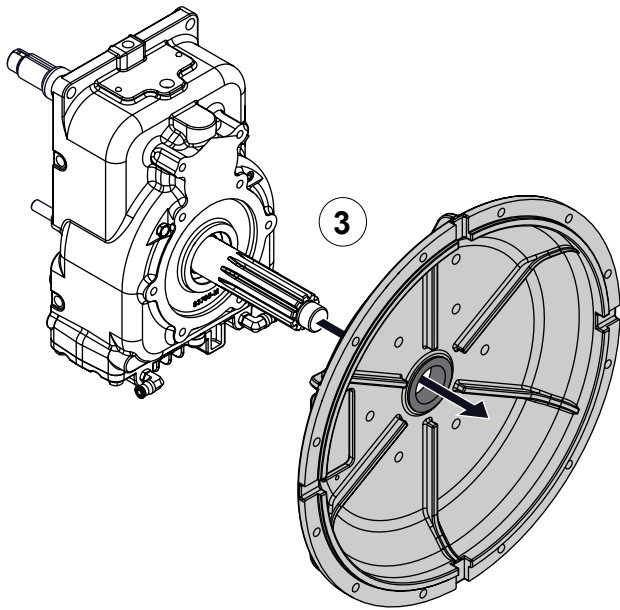
2 Remove the bellhousing adapter hardware.

3 Remove the bellhousing adapter and bushing.

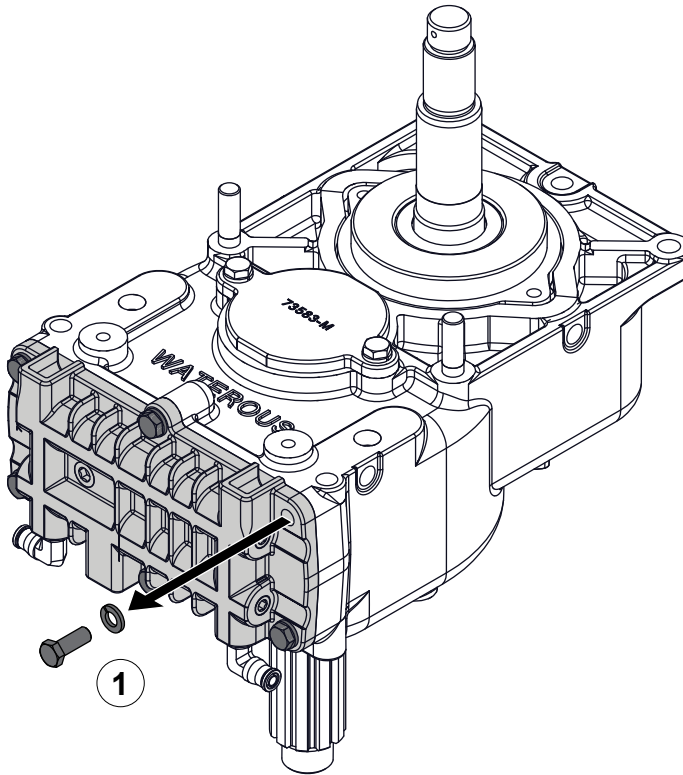
4 Press the bushing out of the bellhousing adapter.

5 Remove and discard the oil seal.

Note: You can also remove the oil seal during the drive shaft disassembly.

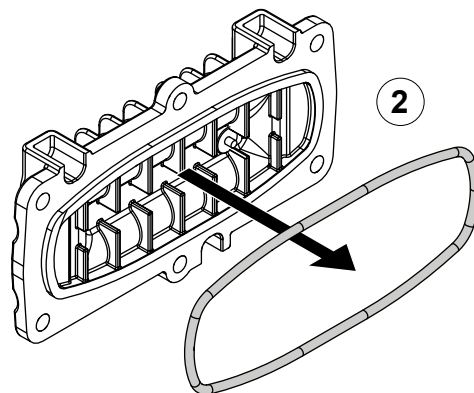


Removing the Bottom Cover

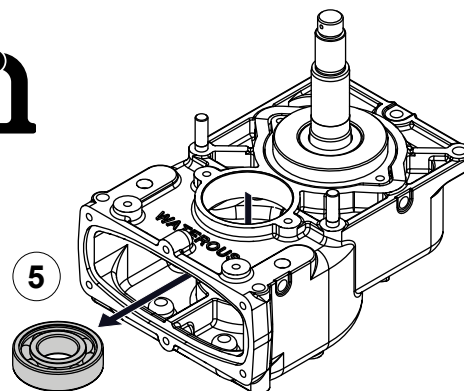
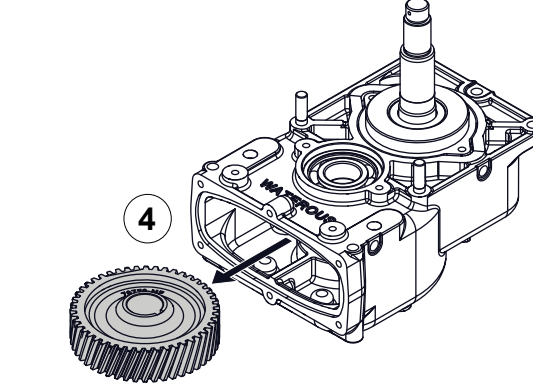
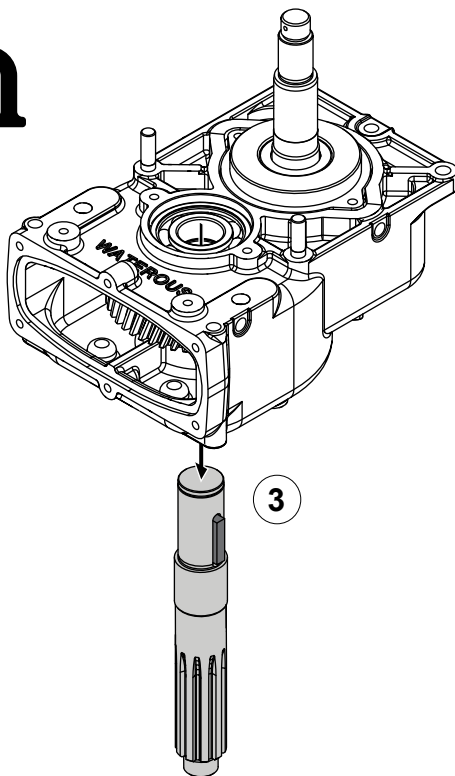
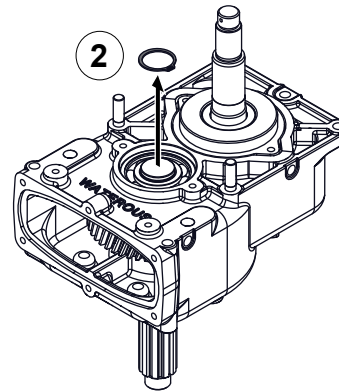
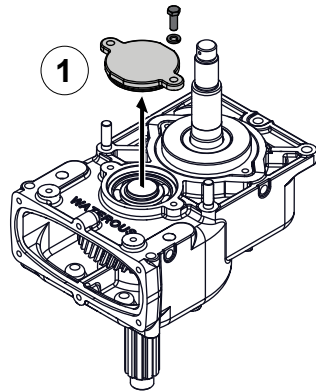


Use the illustrations and instructions to remove the bottom cover.

- 1 Remove the hardware securing the bottom cover to the case.
- 2 Remove and discard the bottom cover O-ring.



Removing the Drive Components

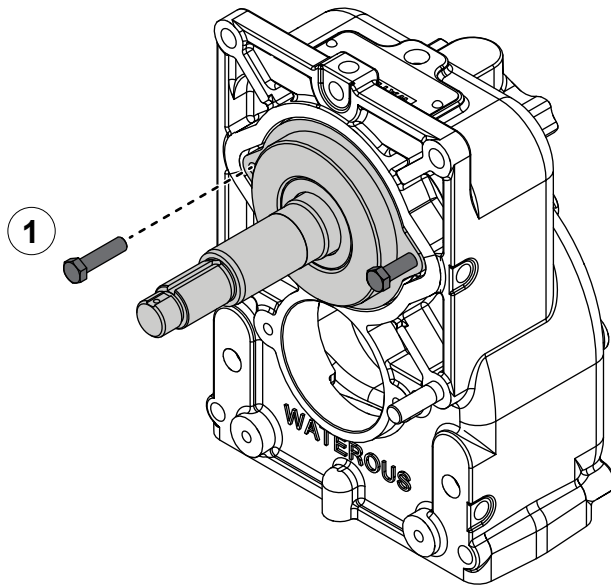


Use the illustrations and instructions to remove the drive components.

Note: The illustrations may not represent your application. Refer to the SPL for your application to identify the drive components and the order of removal.

- 1 Remove the hardware and bearing cover from the transmission case, then remove and discard the O-ring.
- 2 Remove the drive shaft retaining ring.
- 3 Press the drive shaft from the assembly.
- 4 Remove the drive gear.
- 5 Press the drive shaft bearing from the case.

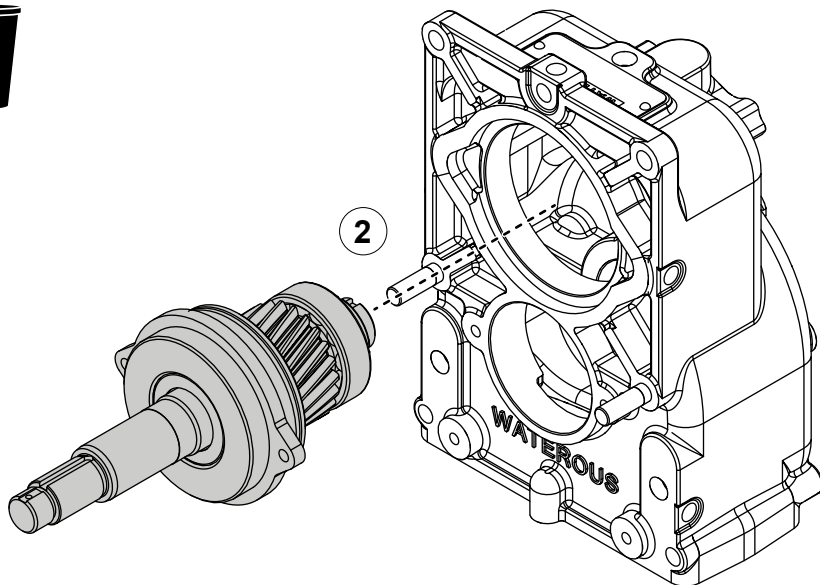
Removing the Impeller Shaft Assembly



Use the illustrations and instructions to remove the impeller shaft assembly.

Note: The illustrations may not represent your specific configuration.

- 1 Perform the following to remove the bearing housing and the associated components:
 - Locally source 2 jacking screws (3/8-24 x 1-1/2 inches).
 - Install the screws into the jacking holes.
 - Apply a quarter turn alternatively to each jacking screw until the impeller shaft assembly is free from the case.
- 2 Once you remove the impeller shaft assembly from the case, perform the following:
 - Remove and discard the O-ring and oil seal.
 - Use an arbor press to separate the remaining components.



Preparing to Assemble the Transmission

- Read and understand the instructions before assembling the transmission.
- Prepare a workspace suitable to accommodate and support the transmission.
- Gather the necessary tools and assembly aides.
- Gather the overhaul components such as, lubricant, bearings, seals, O-rings—only use equivalent components.
- Understand that your configuration may require additional steps that are not described in the illustrations or instruction to perform the assembly.
- This equipment is intended to be assembled by a person or persons with the basic knowledge of servicing similar equipment. Contact Waterous for more information.

Tools Required

- Typical automotive mechanics hand tools.
- Suitable arbor press.
- Suitable support and lifting equipment.

Best Practices

- Remove any dirt, sand, grease, or oil from the enclosure before you begin the overhaul. Surface debris can transfer into the pump interior and prematurely wear internal parts.
- Replace any gaskets and O-ring seals during the assembly.
- Do not reuse the self-locking nuts.
- Apply anti-seize to the self-locking nut threads before installation.

Assembling the Transmission Components

- Refer to the service parts list (SPL) for part identification.
- The SPL specific to your application is determined by the attached pump.
Note: Documents specific to your application are available through the MyWaterous login at [Waterousco.com](https://www.waterousco.com) by entering the serial number for your system. Depending on the application, the serial number for your equipment is located on the operator panel, or the pump, or the transmission, or some combination of the three.
- Use established industry practices to assemble the transmission.
- Tighten hardware to industry standard torque specification—unless otherwise noted.
- Make sure that you do not over-tighten plugs.
- Install retaining rings with the flat face towards the component you are retaining.
- Replace items such as O-rings, bearings, gaskets, oil seals, lubricants, and locknuts with their equivalent.

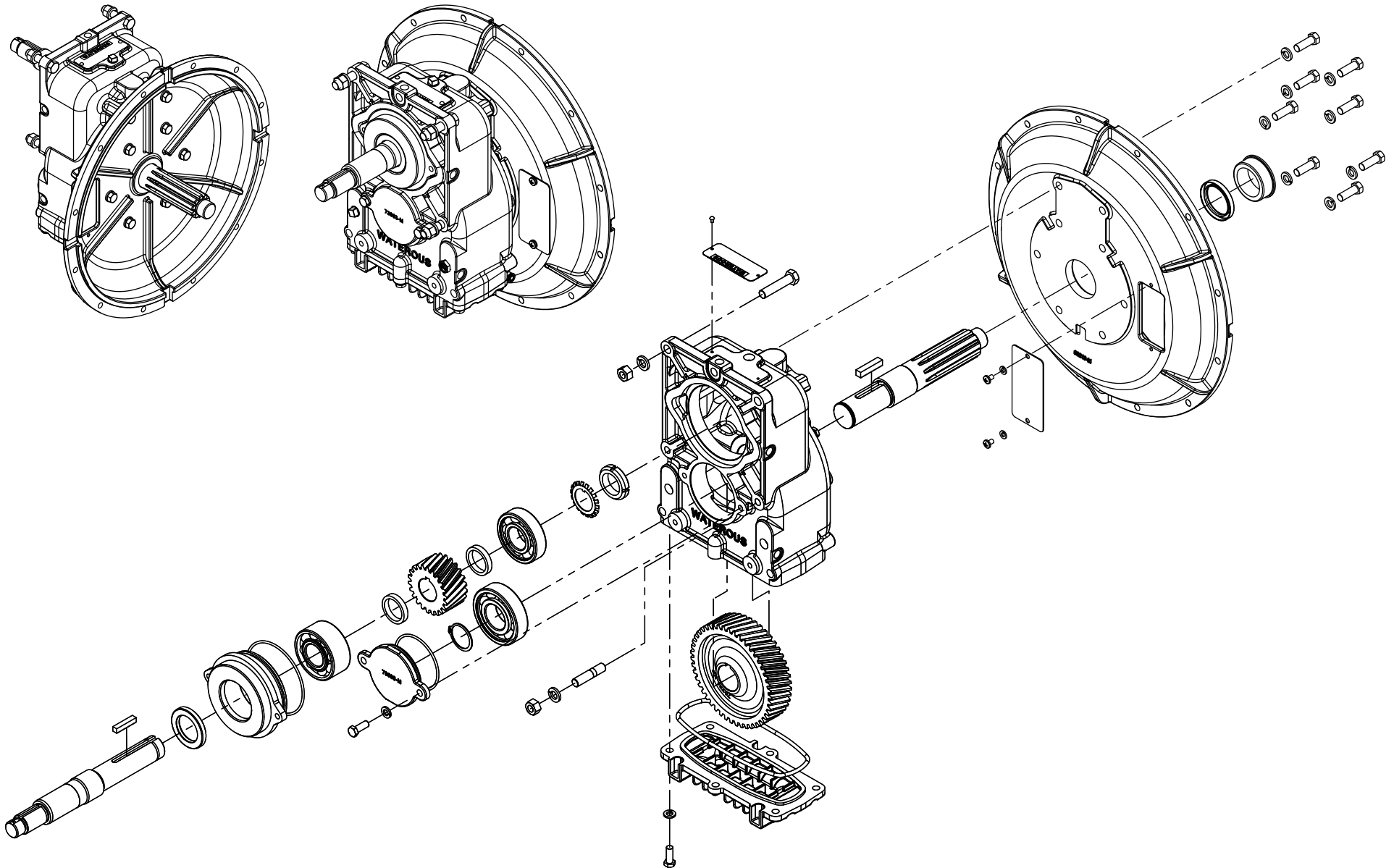
Installing the Transmission

Use the information that you recorded when you removed the equipment to install it into the apparatus.

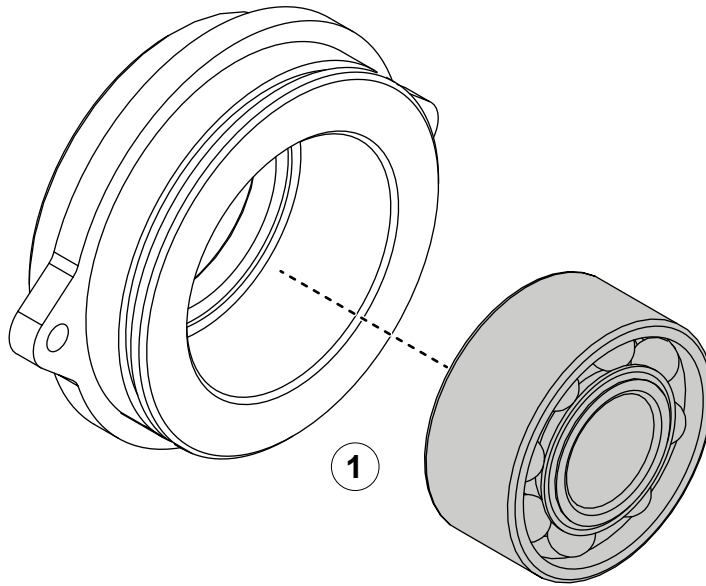
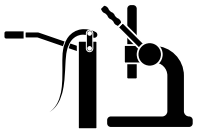
Understanding the Illustrations

The assembly illustrations depict a typical application. Plugs, breathers, cooling hoses and fittings are not illustrated—as they may be in a different location in your application. Refer to the SPL for your application to identify the various plug locations.

CXN and CXV Pumps with One Piece Impeller Shaft



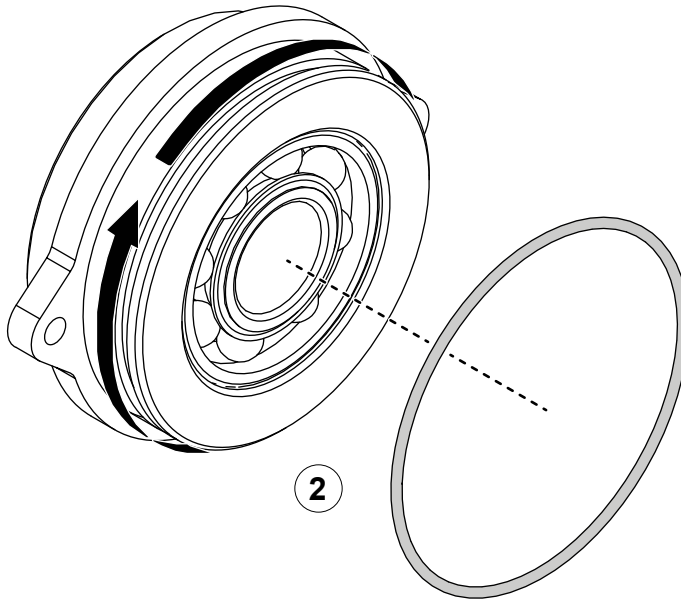
CXN and CXV Pumps with One Piece Impeller Shaft



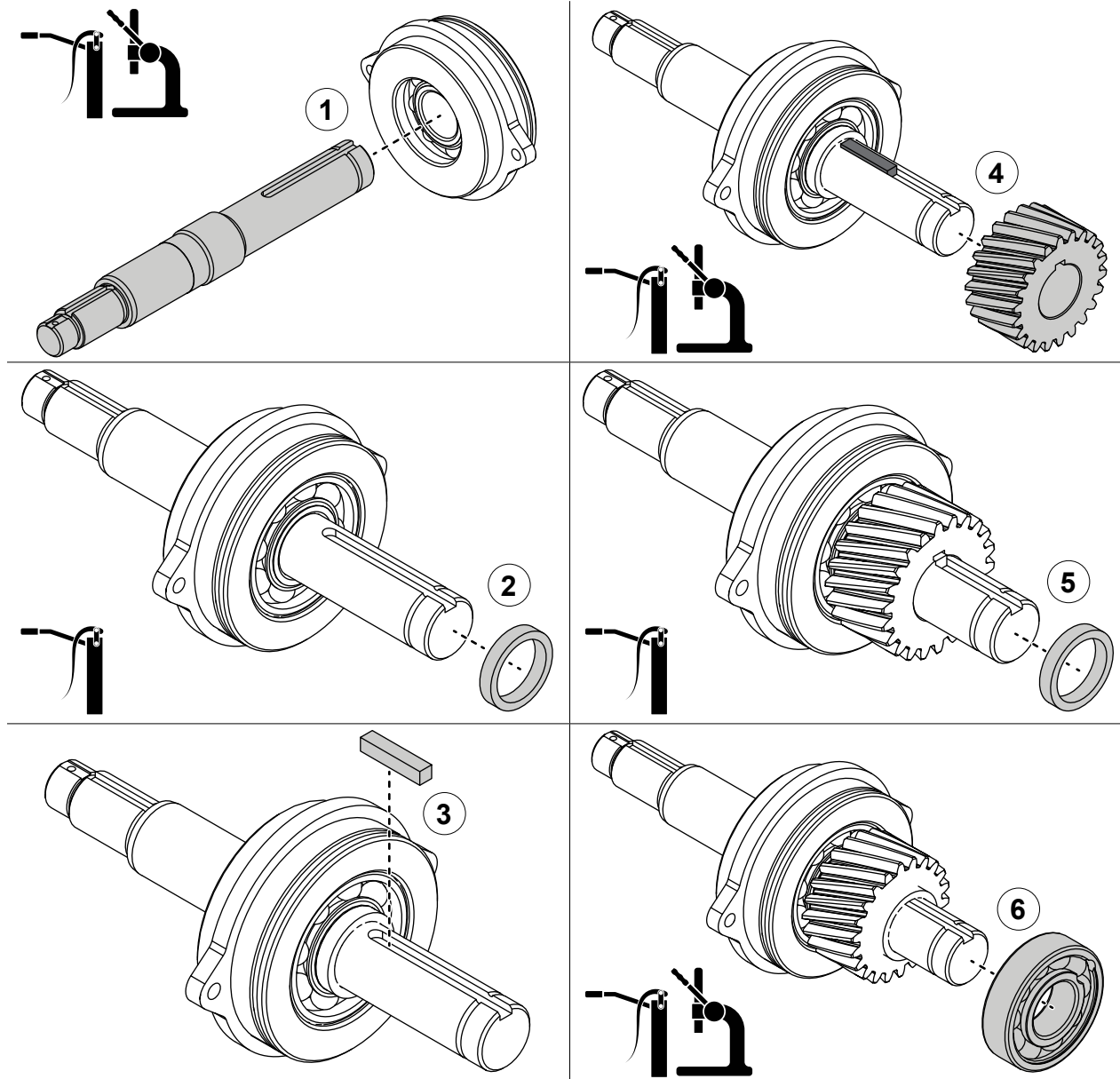
Assembling the Bearing Housing

Use the illustrations and instructions to assemble the bearing housing.

- 1 Apply grease to the outer bearing race, then press it into the bearing housing.
- 2 Apply lubricant to the O-ring groove, then install the O-ring around the bearing housing.



CXN and CXV Pumps with One Piece Impeller Shaft

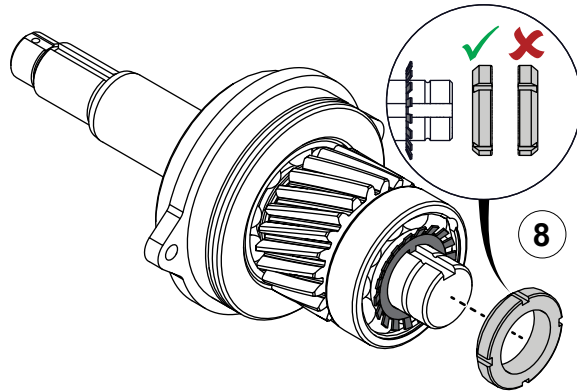
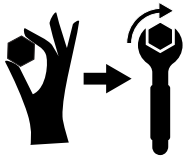
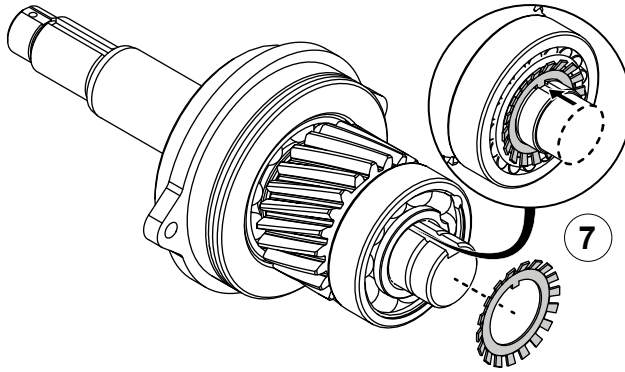


Assembling the Driven Shaft

Use the illustrations and instructions to assemble the driven shaft.

- 1 Apply grease to the inner bearing race, then press the shaft into the bearing housing assembly.
- 2 Apply grease to the spacer, then install it onto the shaft.
- 3 Install the key into the keyway.
- 4 Apply grease to the shaft and align the driven gear keyway with the key on the shaft, then press the components together.
- 5 Apply grease to the spacer, then install it onto the shaft.
- 6 Apply grease to the inner bearing race, then press the bearing onto the impeller shaft assembly.

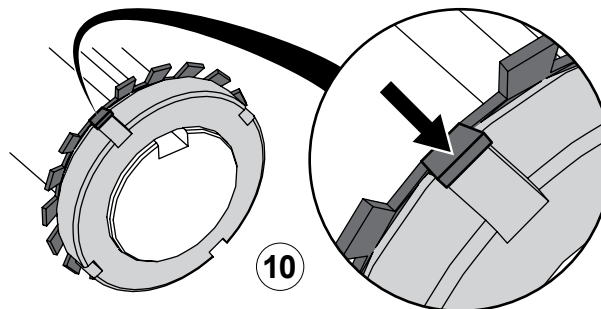
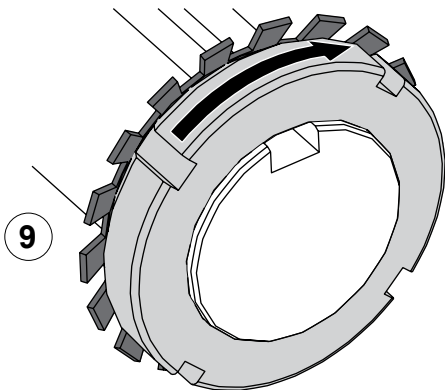
CXN and CXV Pumps with One Piece Impeller Shaft



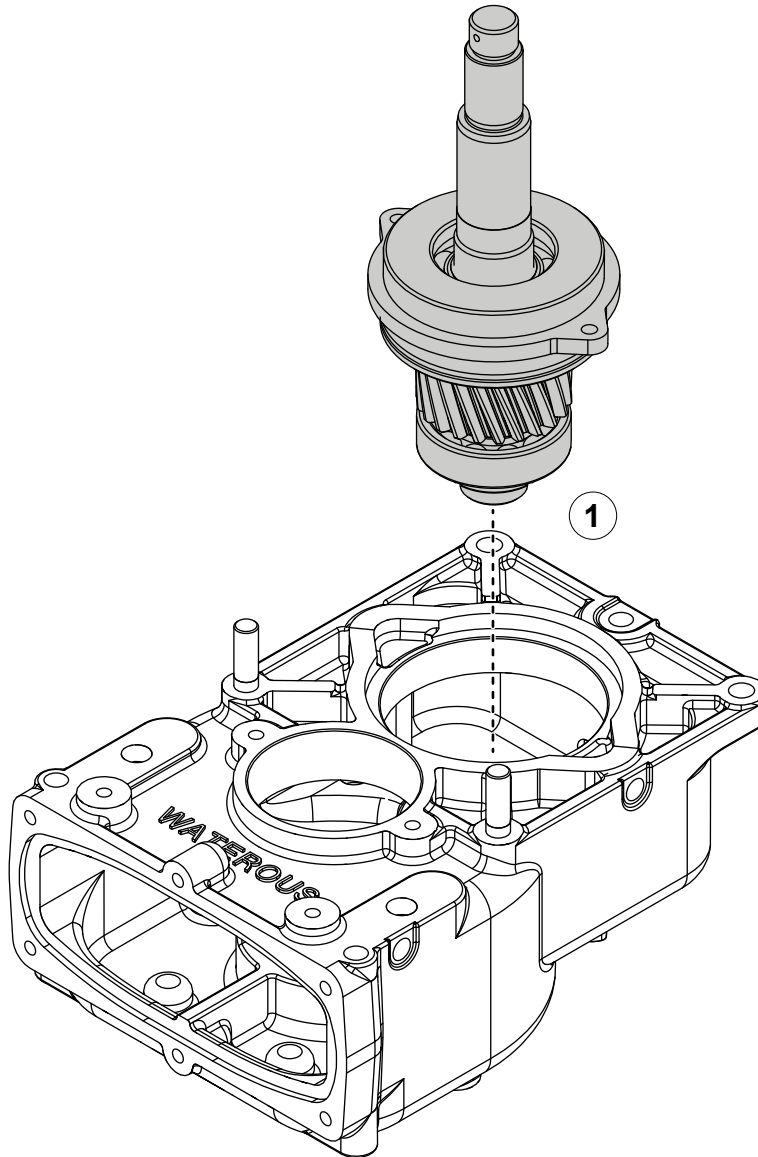
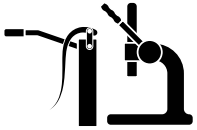
Assembling the Driven Shaft

Use the illustrations and instructions to assemble the driven shaft.

- 7 Install the bearing lock washer inner tab into the keyway on the shaft.
- 8 Install the bearing lock nut onto the shaft—finger tighten, then an additional 1/4 turn.
- 9 To lock the bearing lock nut, do the following:
 - Thread the bearing lock nut onto the impeller shaft until it contacts the bearing lock washer.
 - Apply a minimum of 1/4 turn.
 - Continue turning until a tab on the bearing lock washer aligns with a notch on the bearing lock nut.
- 10 Fold an aligned tab into one of the bearing lock notches to lock the bearing lock nut in place.



CXN and CXV Pumps with One Piece Impeller Shaft

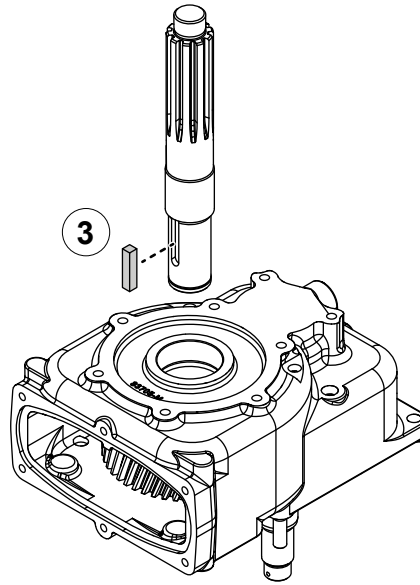
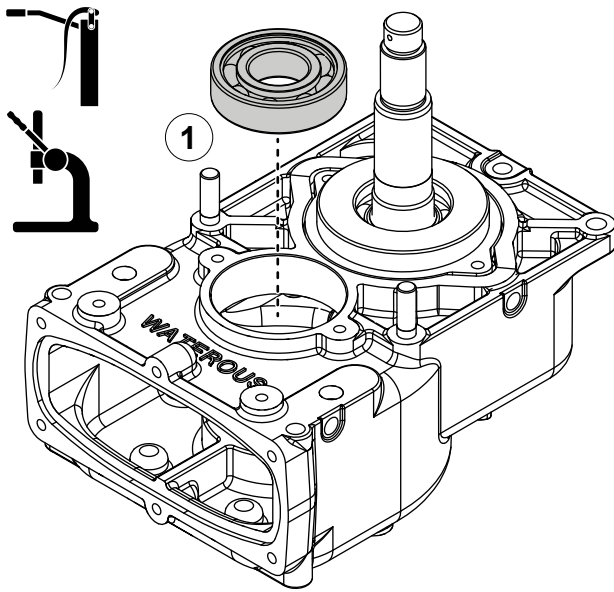


Installing the Driven Gear Assembly

Use the illustration and instructions to install the driven gear assembly.

- 1 Apply grease to the outer bearing race, then press the driven shaft assembly into the case.

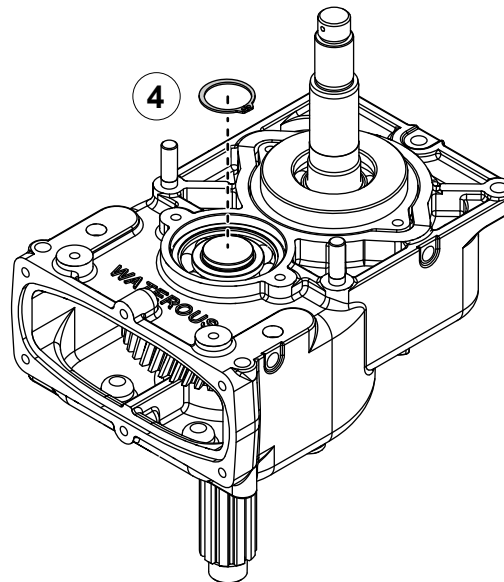
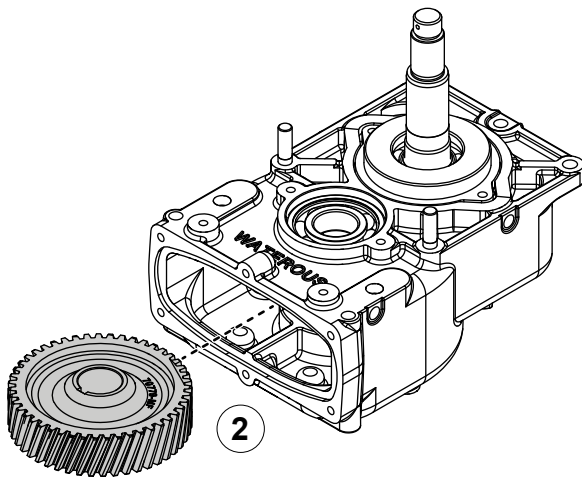
CXN and CXV Pumps with One Piece Impeller Shaft



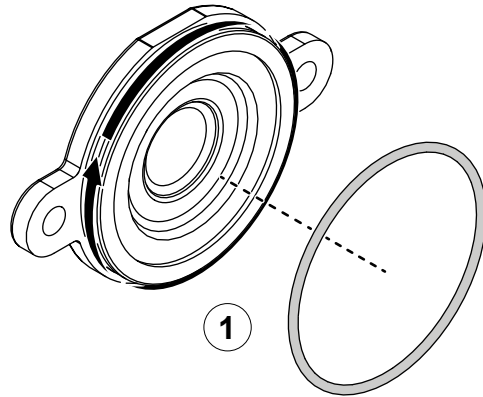
Installing the Drive Shaft Components

Use the illustrations and instructions to assemble the drive shaft components.

- 1 Apply grease to the outer bearing race, then press it into the case.
- 2 Align the drive gear below the bearing.
- 3 To complete this sequence, do the following:
 - Install the key into the keyway.
 - Apply grease to the drive shaft.
 - Align the key on the drive shaft with the keyway on the driven gear, then press the assembly together.
- 4 Flip the case over, then install the retaining ring.



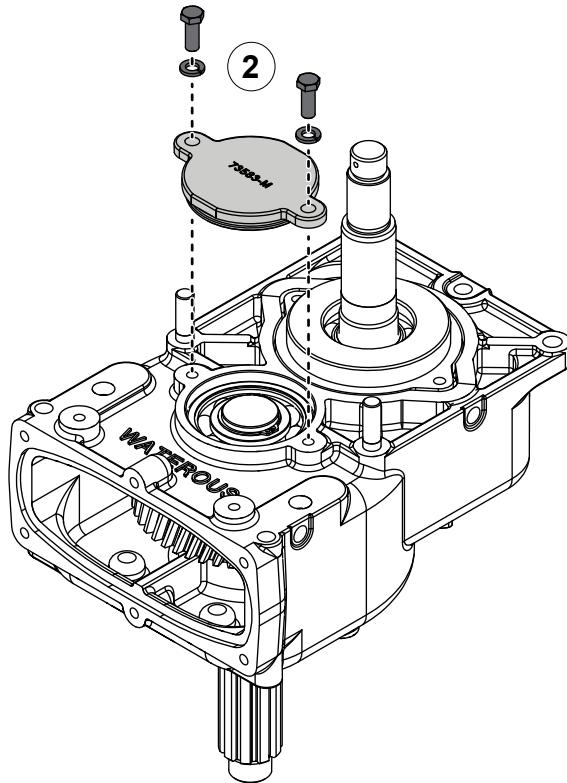
CXN and CXV Pumps with One Piece Impeller Shaft



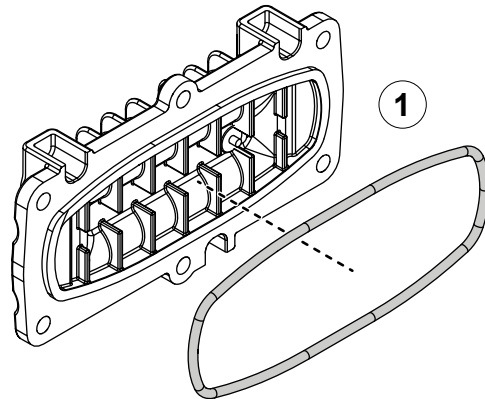
Installing the Bearing Cover

Use the illustrations and instructions to install the bearing cover.

- 1 Apply lubricant to the O-ring groove, then install the O-ring around the bearing cover.
- 2 Use the hardware that you removed earlier to install the bearing cover.



CXN and CXV Pumps with One Piece Impeller Shaft

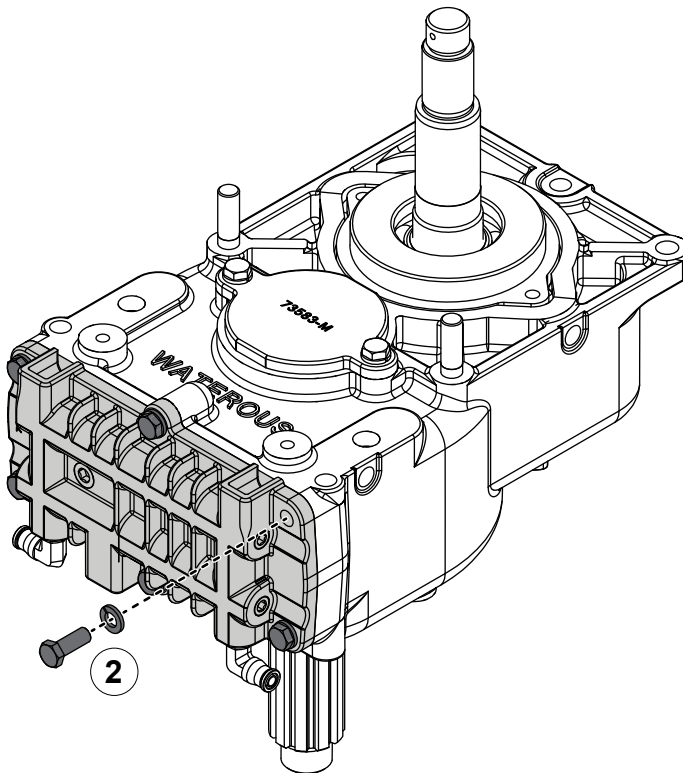


Installing the Bottom Cover

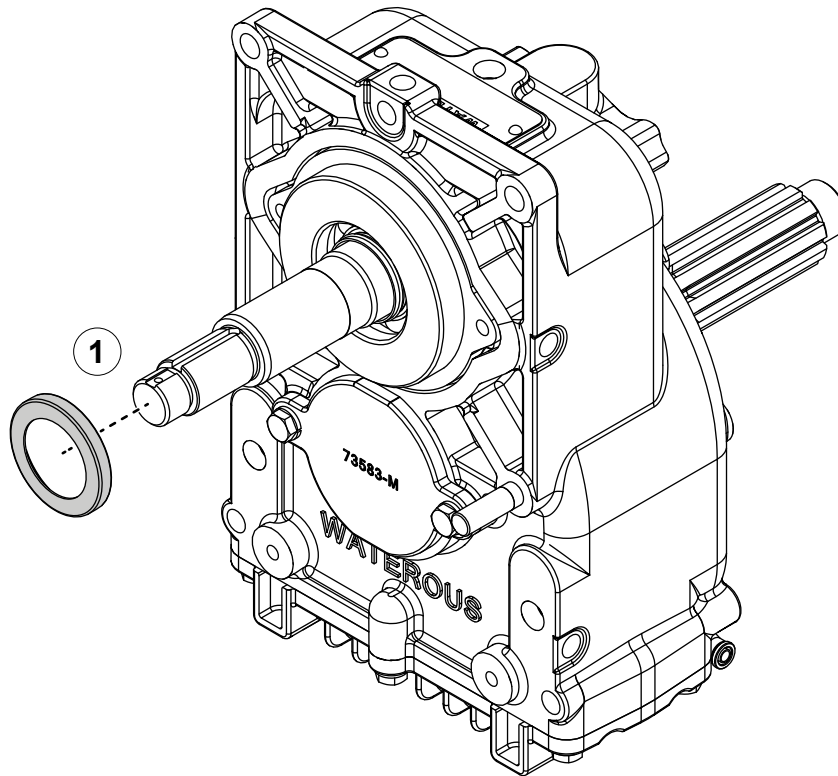
Use the illustrations and instructions to install the bottom cover.

Note: Refer to the SPL for your application to determine the bottom cover orientation.

- 1 Apply lubricant around the O-ring, then install it on the bottom cover.
- 2 Use the hardware that you removed earlier to install the bottom cover.



CXN and CXV Pumps with One Piece Impeller Shaft



Installing the Oil Seal

Use the illustrations and instructions to install the oil seal.

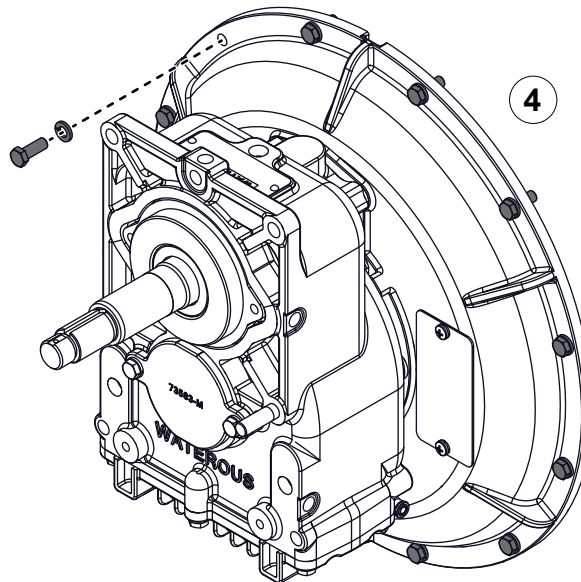
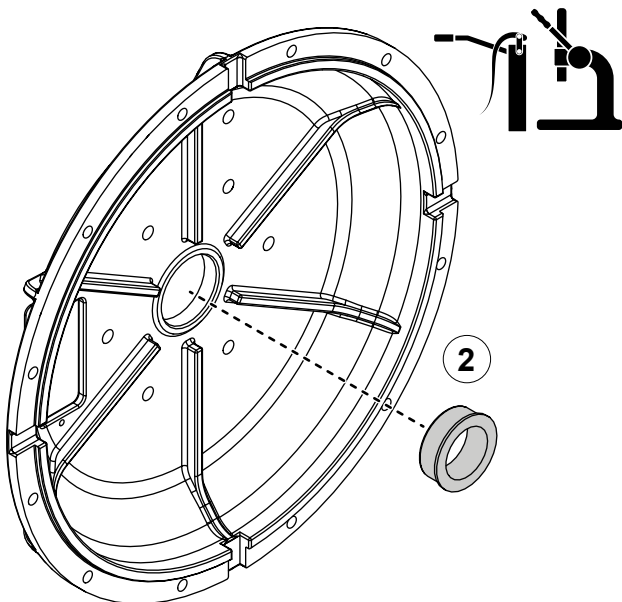
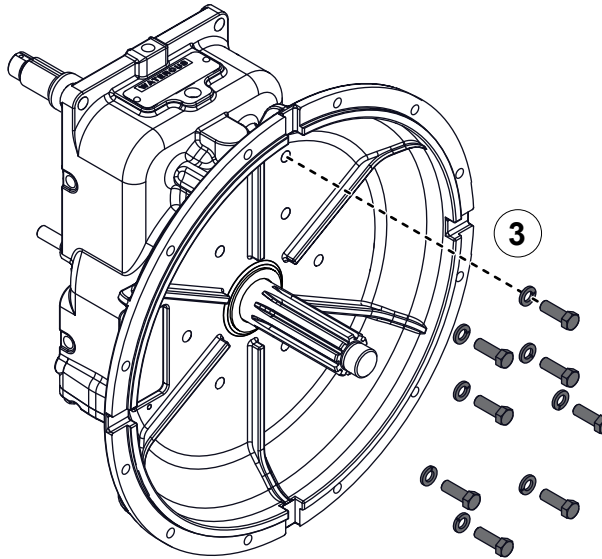
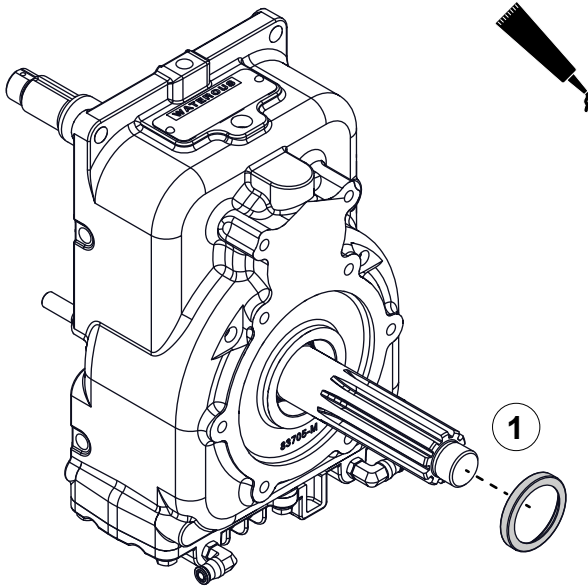
- 1 Apply sealant to the oil seal, then install it onto the impeller shaft.

CXN and CXV Pumps with One Piece Impeller Shaft

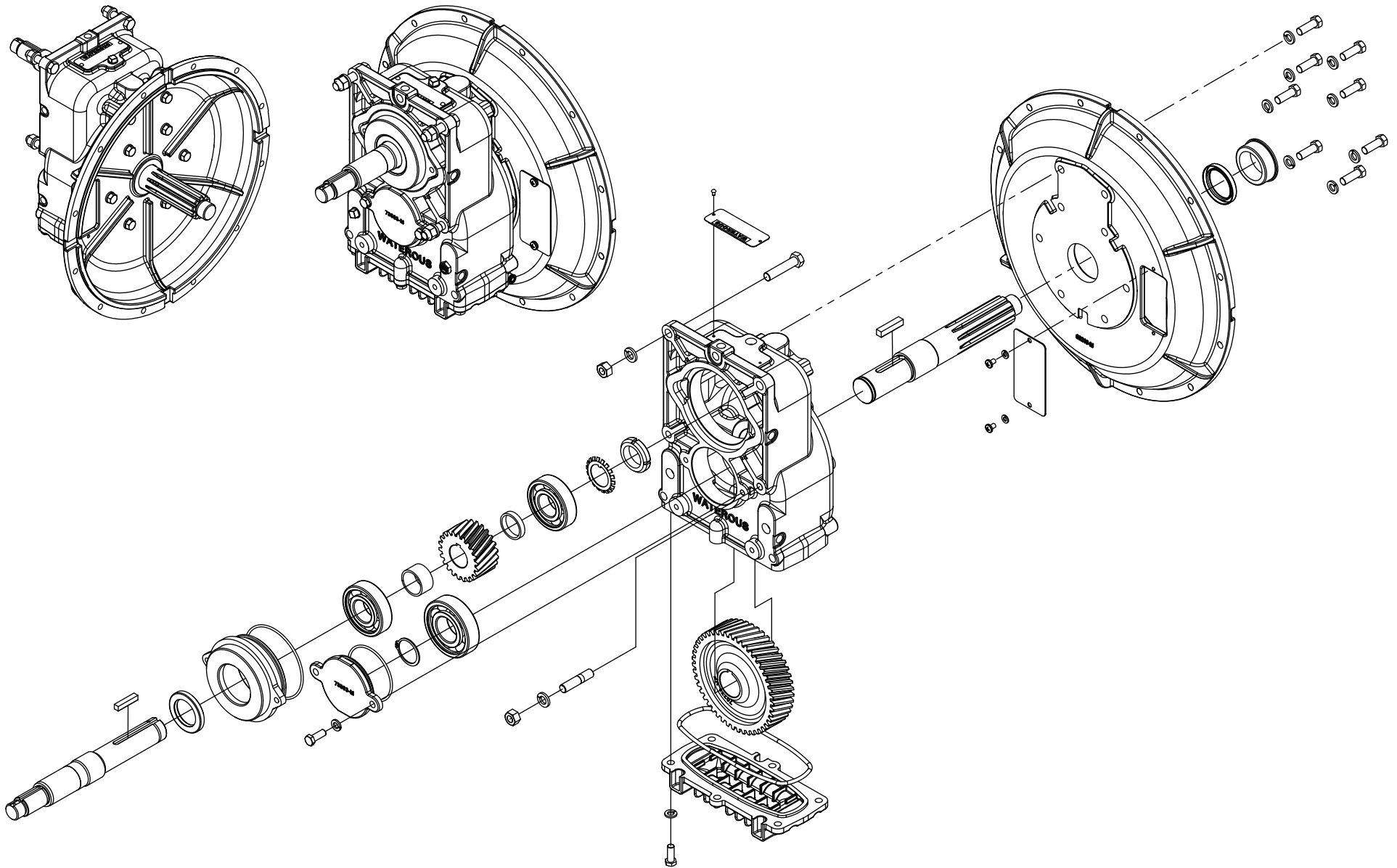
Installing the Bellhousing Adapter

Use the illustrations and instructions to the install bellhousing adapter.

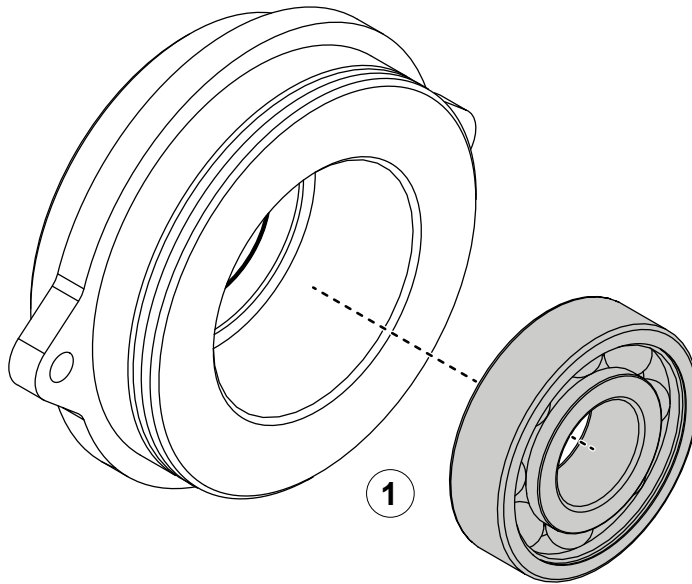
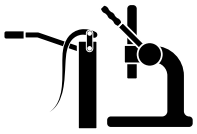
- 1 Apply sealant to the oil seal, then install it onto the shaft.
- 2 Apply grease to the bushing, then press it into the bellhousing adapter.
- 3 Use the hardware that you removed earlier to secure the bellhousing adapter to the transmission case.
- 4 Use the hardware that you removed earlier to secure the bellhousing adapter to the engine.



CGV and CGVR Pumps with One Piece Impeller Shaft



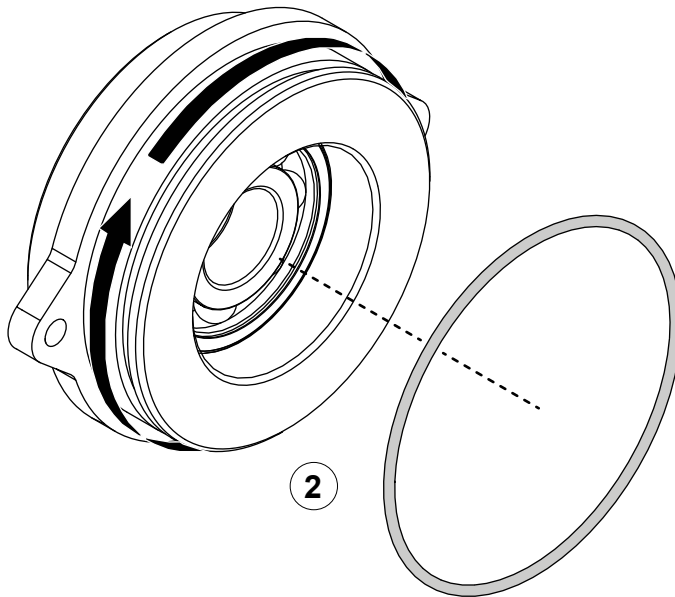
CGV and CGVR Pumps with One Piece Impeller Shaft



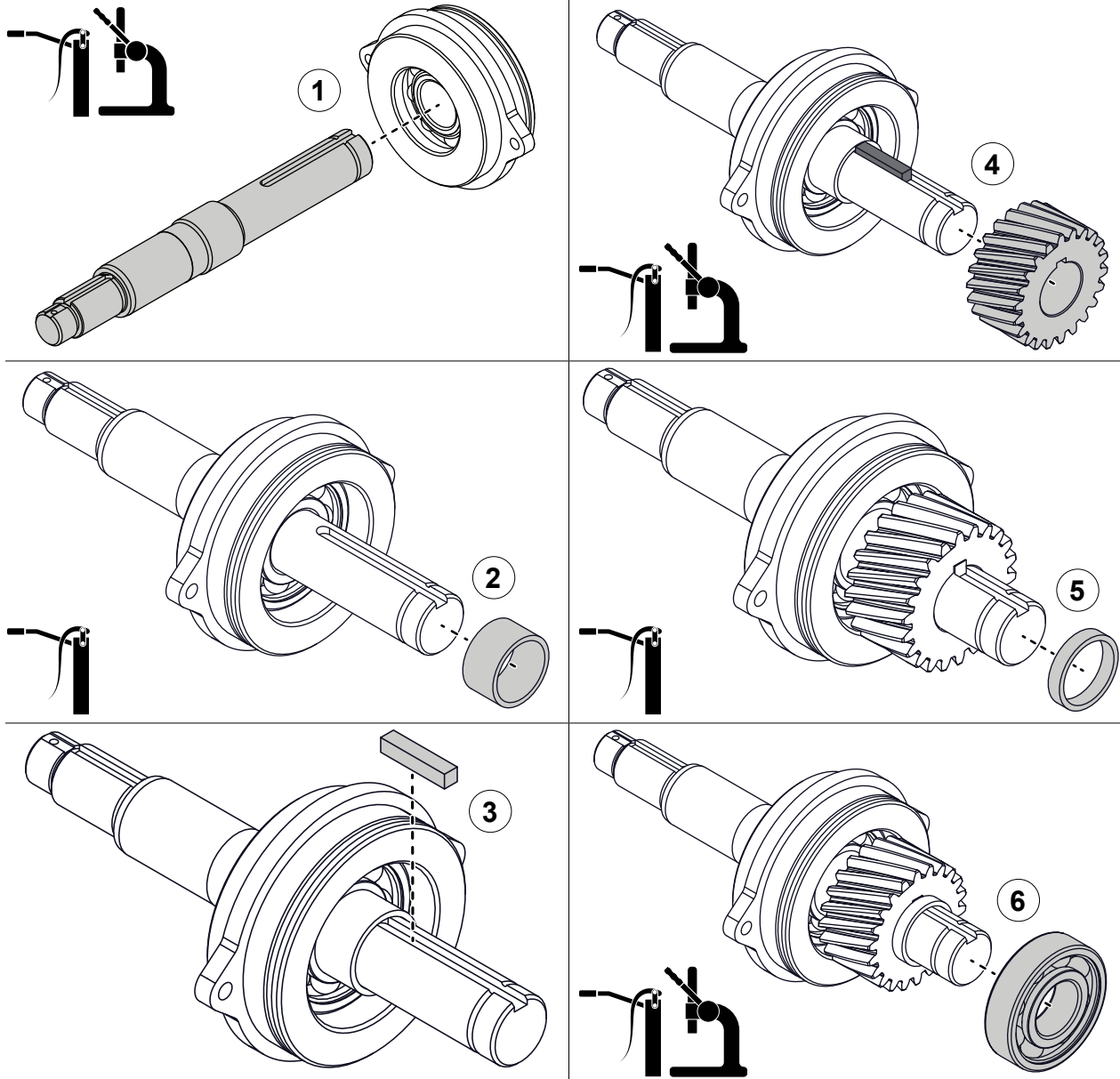
Assembling the Bearing Housing

Use the illustrations and instructions to assemble the bearing housing.

- 1 Apply grease to the outer bearing race, then press it into the bearing housing.
- 2 Apply lubricant to the O-ring groove, then install the O-ring around the bearing housing.



CGV and CGVR Pumps with One Piece Impeller Shaft

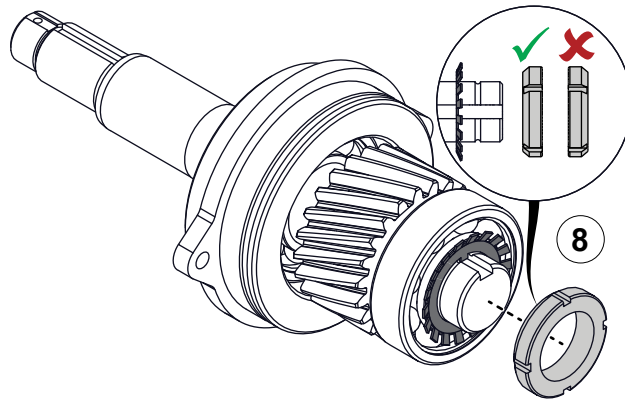
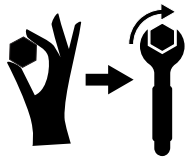
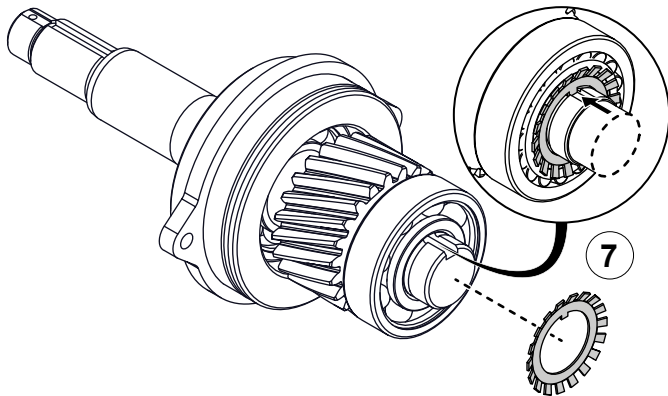


Assembling the Driven Shaft

Use the illustrations and instructions to assemble the driven shaft.

- 1 Apply grease to the inner bearing race, then press the shaft into the bearing housing assembly.
- 2 Apply grease to the shaft and install the spacer.
- 3 Install the key into the keyway.
- 4 Apply grease to the shaft and align the driven gear keyway with the key on the shaft, then press the components together.
- 5 Apply grease to the shaft, then install the spacer onto the shaft.
- 6 Apply grease to the inner bearing race, then press the bearing onto the impeller shaft assembly.

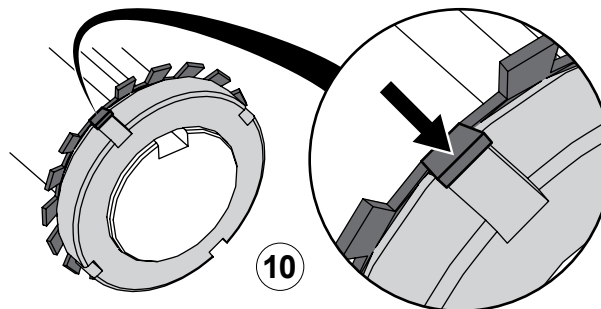
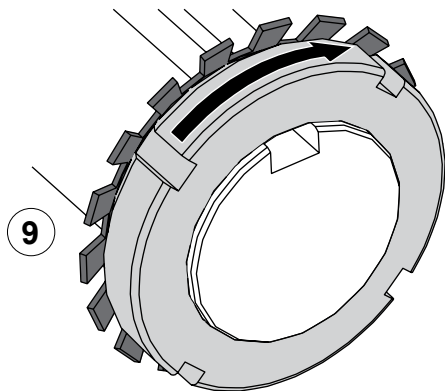
CGV and CGVR Pumps with One Piece Impeller Shaft



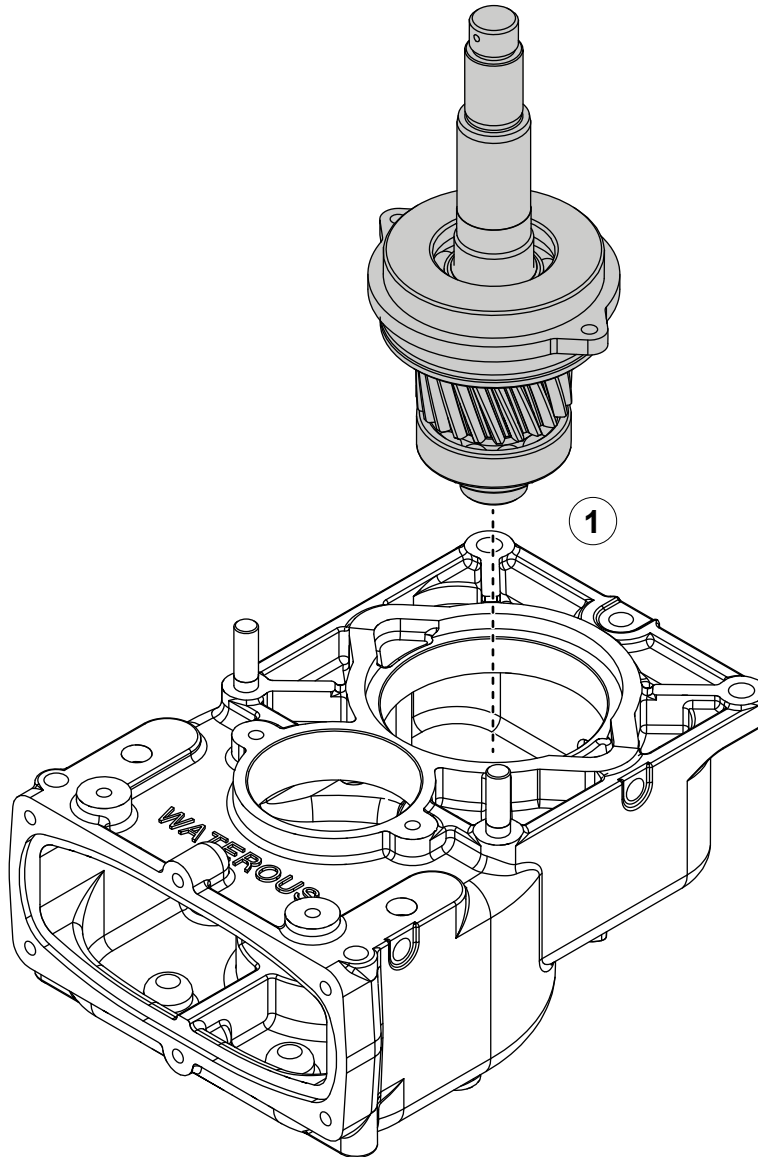
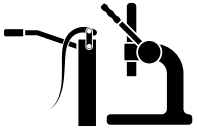
Assembling the Driven Shaft

Use the illustrations and instructions to complete the assembly.

- 7 Install the bearing lock washer inner tab into the keyway on the shaft.
- 8 Install the bearing lock nut onto the shaft—finger tighten, then an additional 1/4 turn.
- 9 To lock the bearing lock nut, do the following:
 - Thread the bearing lock nut onto the impeller shaft until it contacts the bearing lock washer.
 - Apply a minimum of 1/4 turn.
 - Continue turning until a tab on the bearing lock washer aligns with a notch on the bearing lock nut.
- 10 Fold an aligned tab into one of the bearing lock notches to lock the bearing lock nut in place.



CGV and CGVR Pumps with One Piece Impeller Shaft

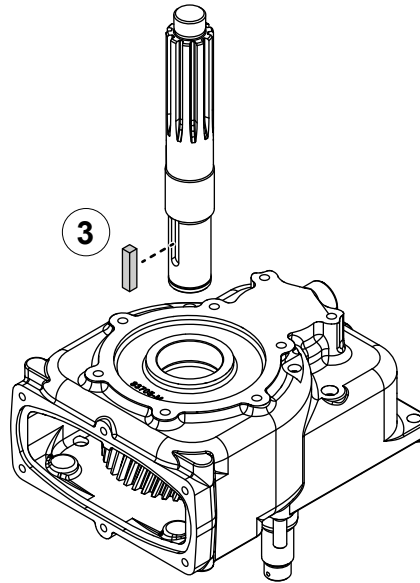
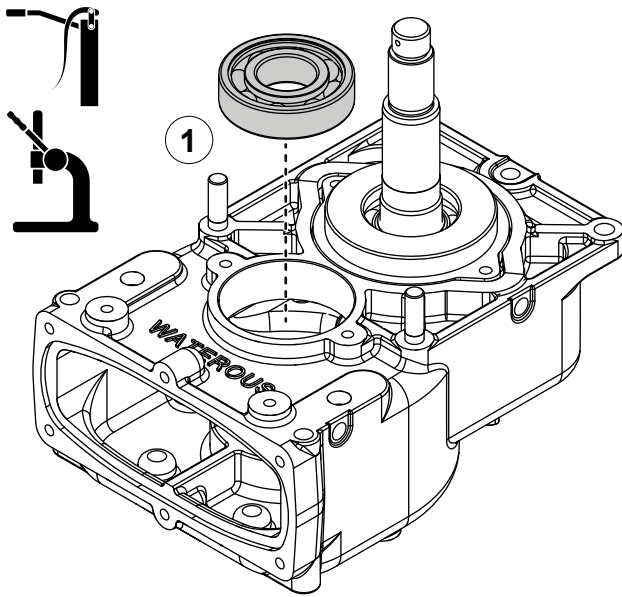


Installing the Driven Gear Assembly

Use the illustration and instruction to install the impeller shaft assembly.

- 1 Apply grease to the outer bearing race, then press the driven shaft assembly into the case.

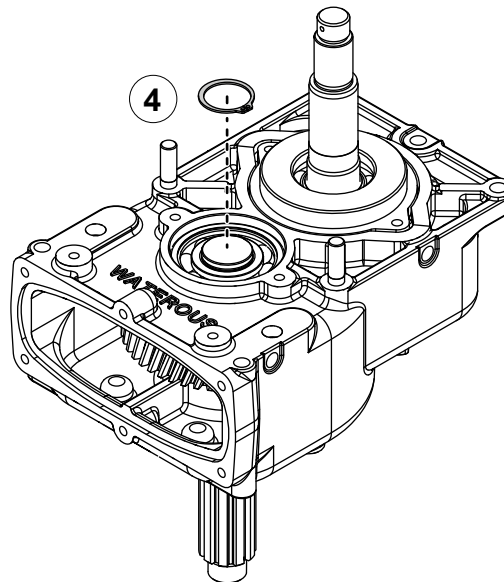
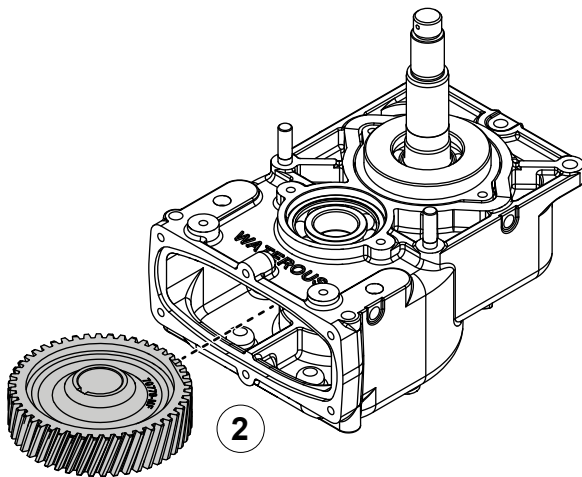
CGV and CGVR Pumps with One Piece Impeller Shaft



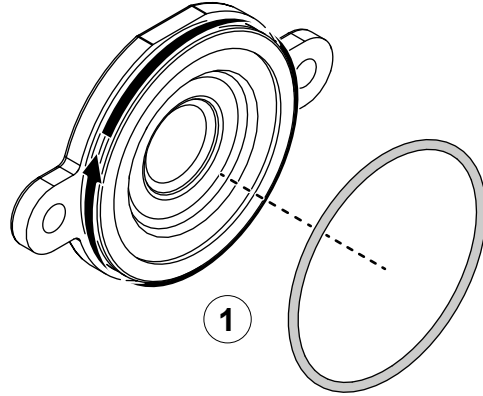
Installing the Drive Shaft Components

Use the illustrations and instructions to assemble the drive shaft assembly.

- 1 Apply grease to the outer bearing race, then press it into the case.
- 2 Align the drive gear below the bearing.
- 3 To complete this sequence, do the following:
 - Install the key into the keyway.
 - Apply grease to the drive shaft.
 - Align the key on the drive shaft with the keyway on the driven gear, then press the assembly together.
- 4 Flip the case over, then install the retaining ring.



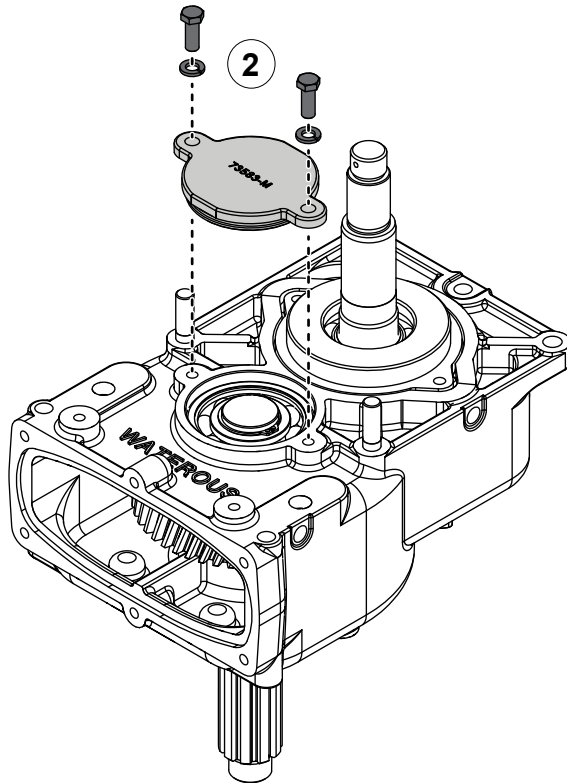
CGV and CGVR Pumps with One Piece Impeller Shaft



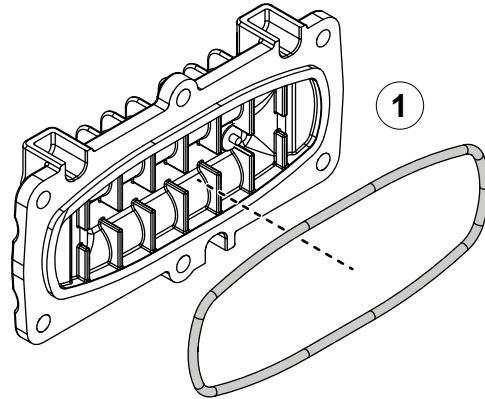
Installing the Bearing Cover

Use the illustrations and instructions to install the bearing cover.

- 1 Apply lubricant to the O-ring groove, then install the O-ring around the bearing cover.
- 2 Use the hardware that you removed earlier to install the bearing cover.



CGV and CGVR Pumps with One Piece Impeller Shaft

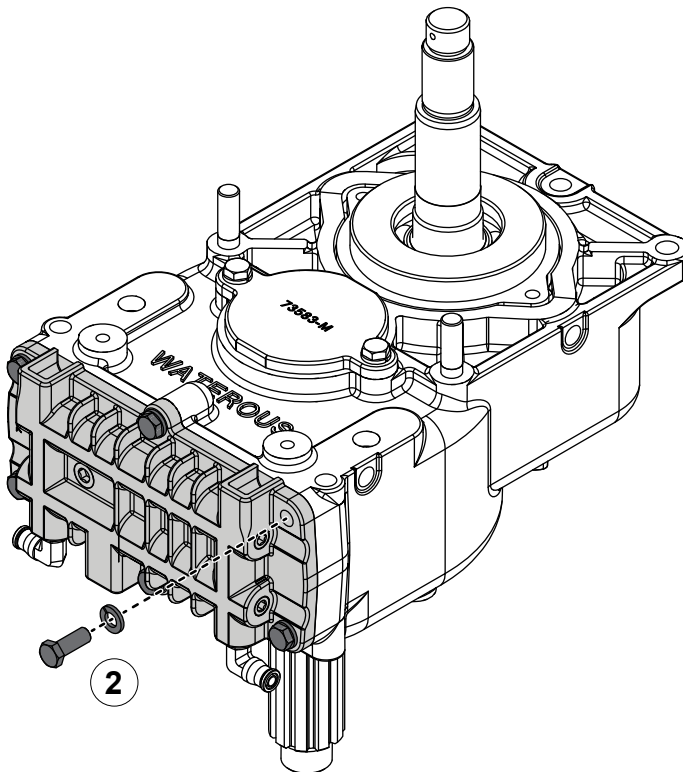


Installing the Bottom Cover

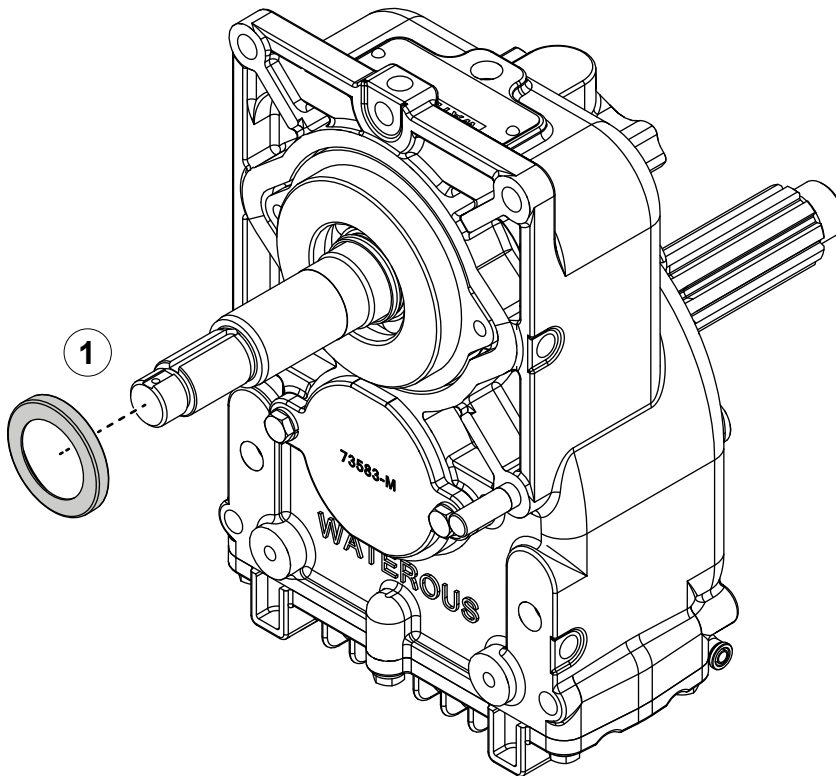
Use the illustrations and instructions to install the bottom cover.

Note: Refer to the SPL for your application to determine the bottom cover orientation.

- 1 Apply lubricant around the O-ring, then install it on the bottom cover.
- 2 Use the hardware that you removed earlier to install the bottom cover.



CGV and CGVR Pumps with One Piece Impeller Shaft



Installing the Oil Seal

Use the illustration and instructions to install the oil seal.

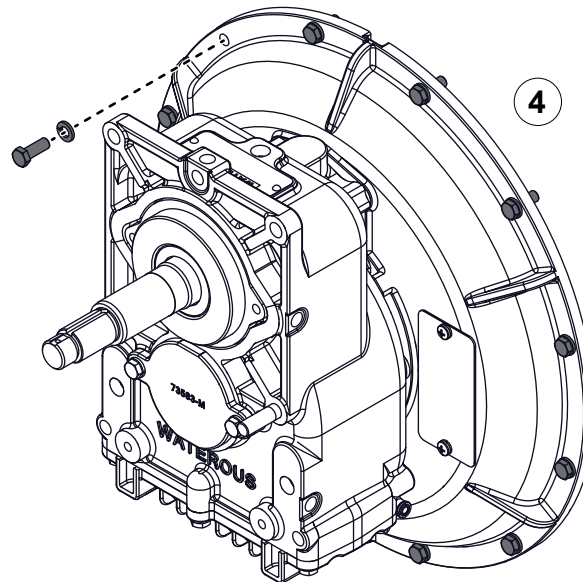
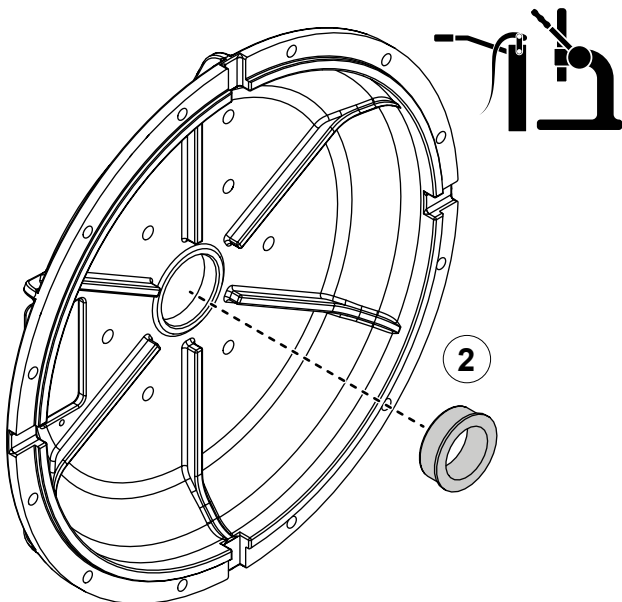
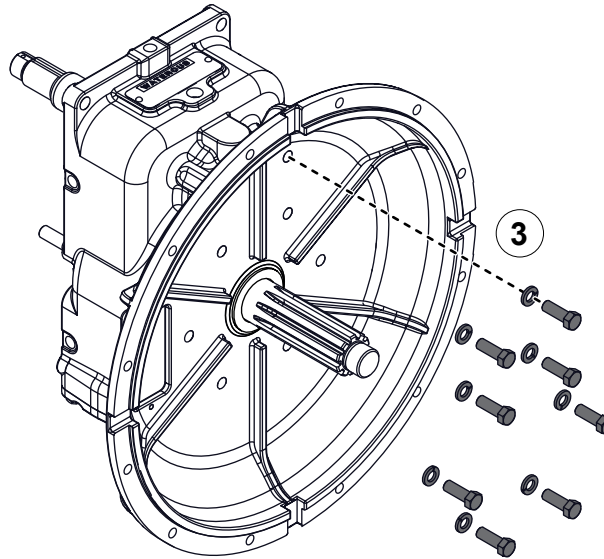
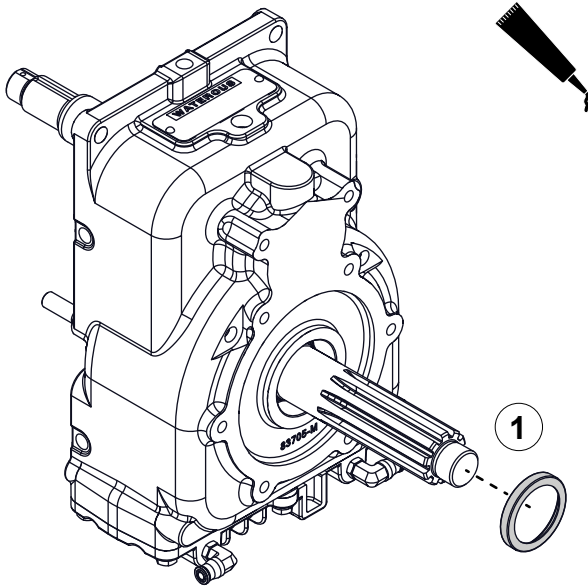
- 1 Apply sealant to the oil seal, then install it onto the impeller shaft.

CGV and CGVR Pumps with One Piece Impeller Shaft

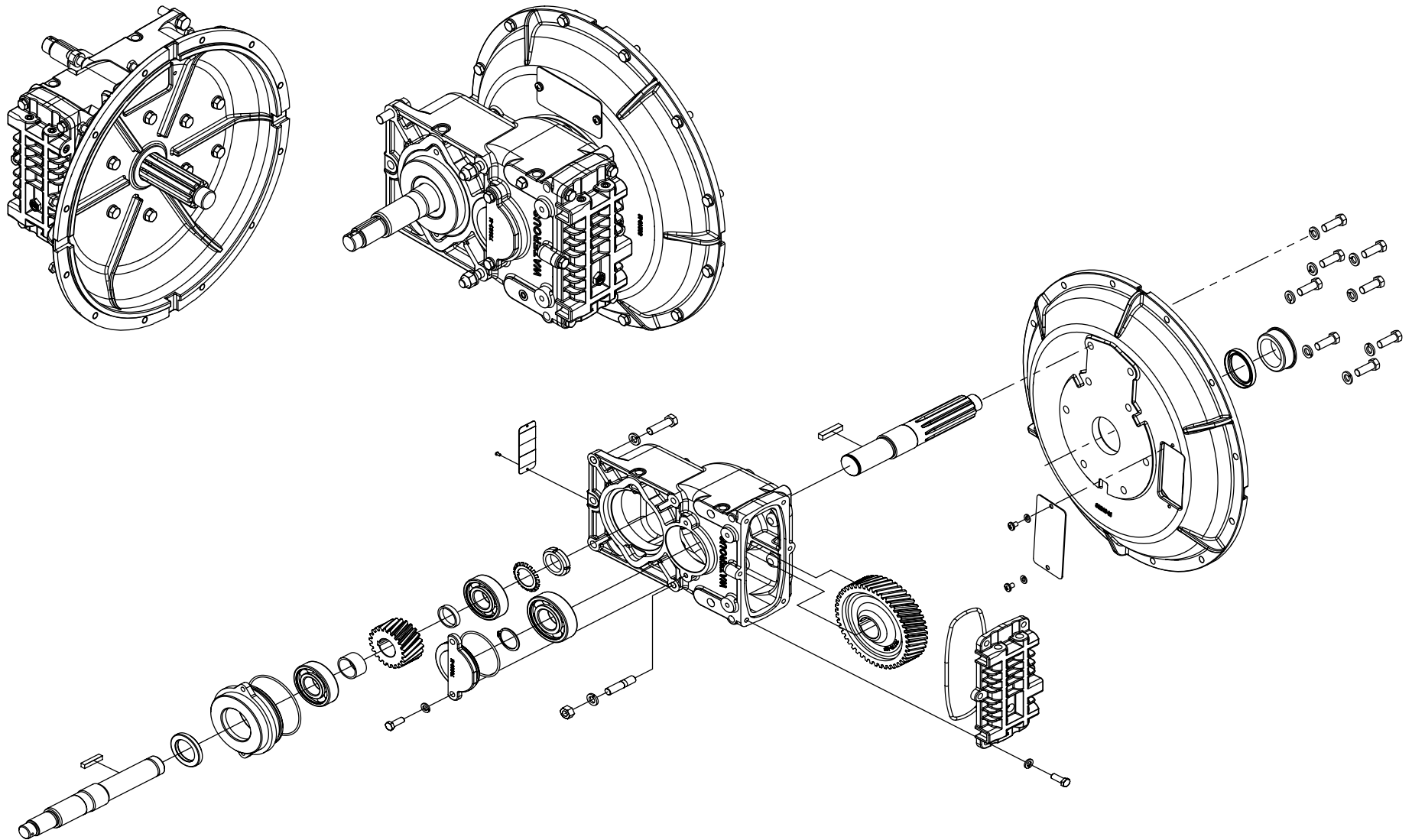
Installing the Bellhousing Adapter

Use the illustrations and instructions to install the bellhousing adapter.

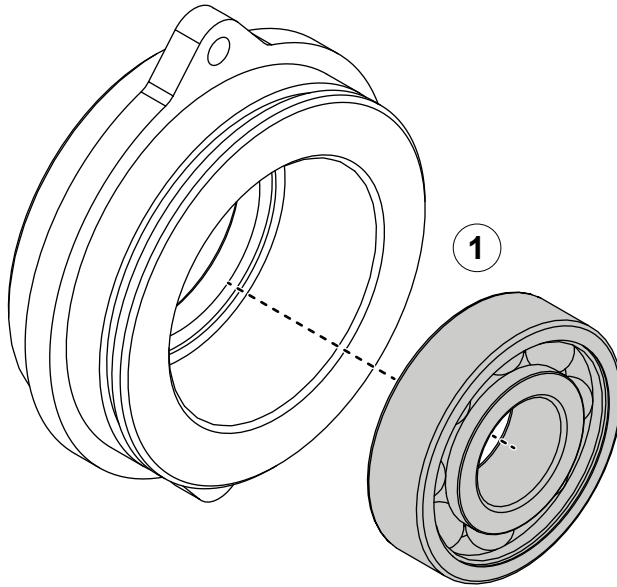
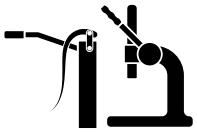
- 1 Apply sealant to the oil seal, then install it onto the drive shaft.
- 2 Apply grease to the bushing, then press it into the bellhousing adapter.
- 3 Use the hardware that you removed earlier to secure the bellhousing adapter to the transmission case.
- 4 Use the hardware that you removed earlier to secure the bellhousing adapter to the engine.



RF600 Pumps with One Piece Impeller Shaft



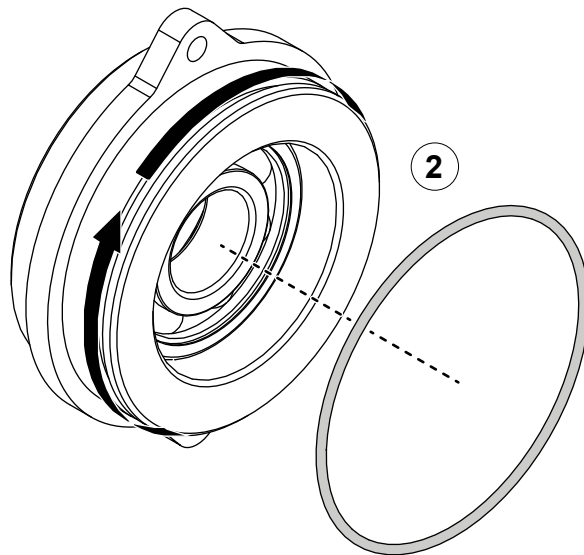
RF600 Pumps with One Piece Impeller Shaft



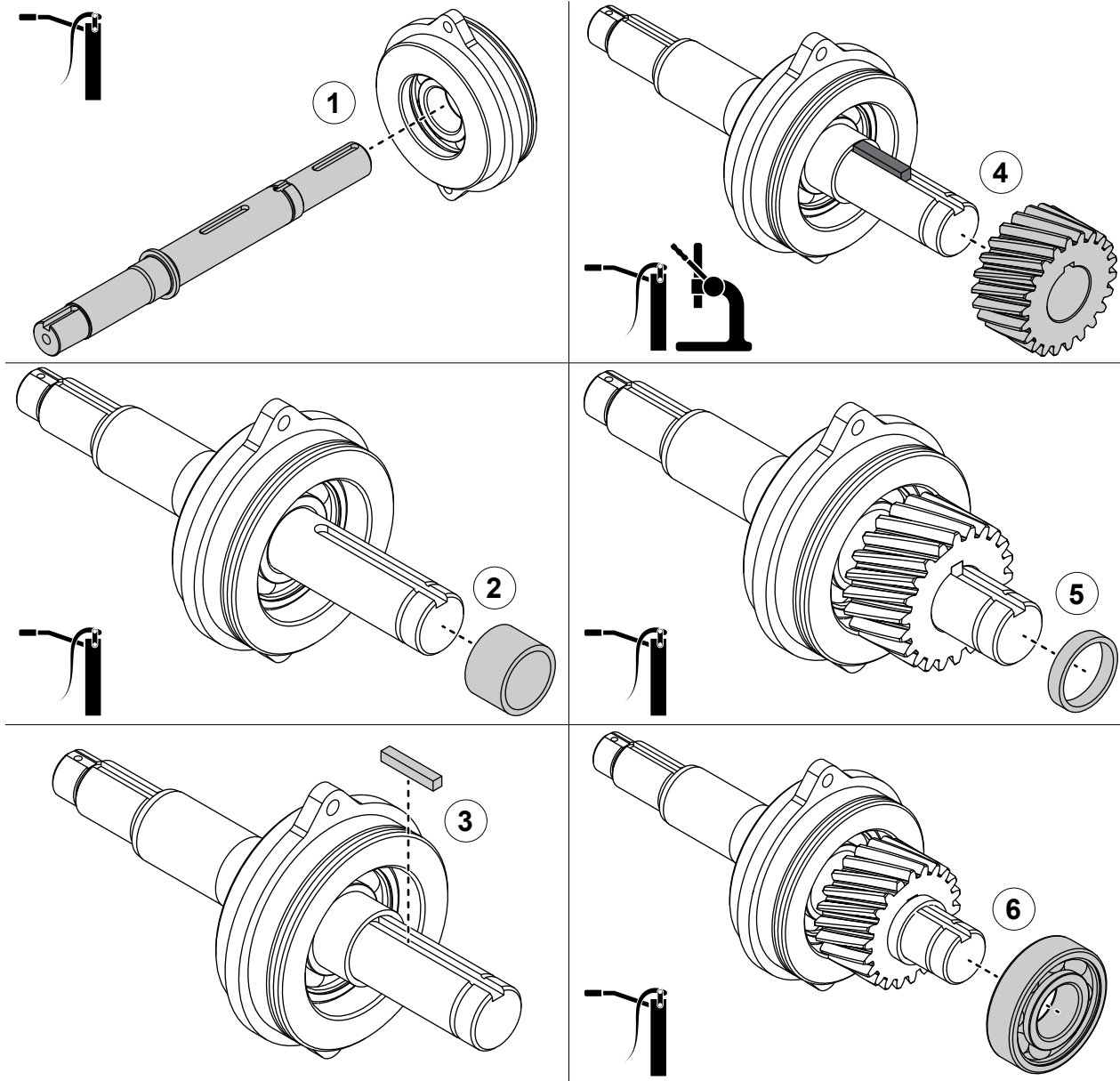
Assembling the Bearing Housing

Use the illustrations and instructions to assemble the bearing housing.

- 1 Apply grease to the outer bearing race, then press it into the bearing housing.
- 2 Apply lubricant to the O-ring groove, then install the O-ring around the bearing housing.



RF600 Pumps with One Piece Impeller Shaft

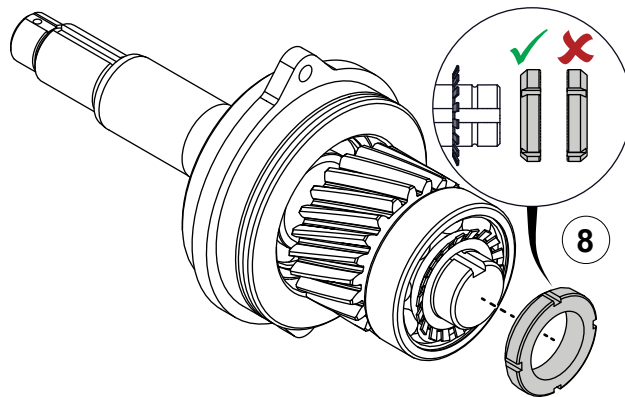
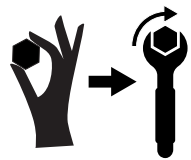
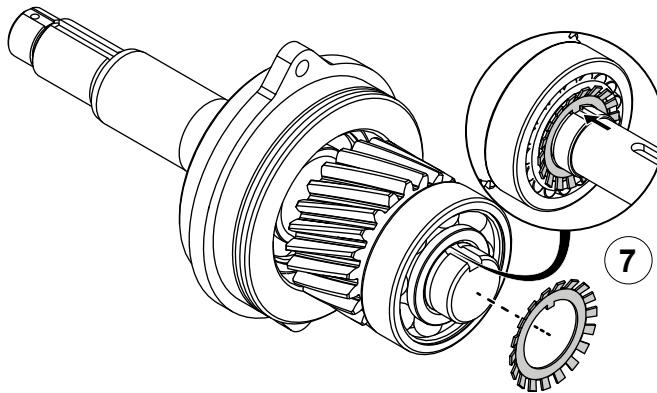


Assembling the Driven Shaft

Use the illustrations and instructions to assemble the driven shaft.

- 1 Apply grease to the inner bearing race, then press the shaft into the bearing housing assembly.
- 2 Apply grease to the shaft, then install the spacer onto the shaft.
- 3 Install the key into the keyway.
- 4 Apply grease to the shaft and align the driven gear keyway with the key on the shaft, then press the components together.
- 5 Apply grease to the shaft, then install the spacer onto the shaft.
- 6 Apply grease to the inner bearing race, then press the bearing onto the driven shaft assembly.

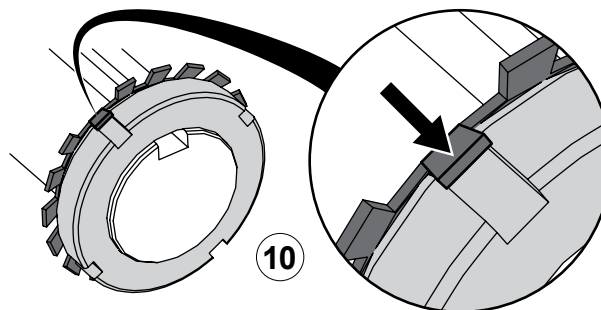
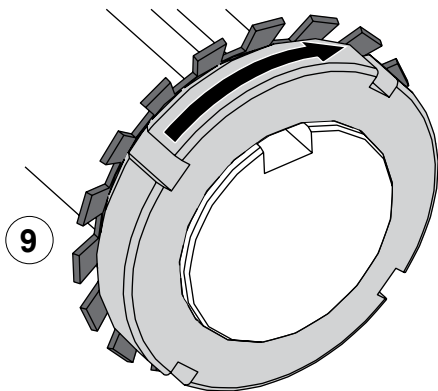
RF600 Pumps with One Piece Impeller Shaft



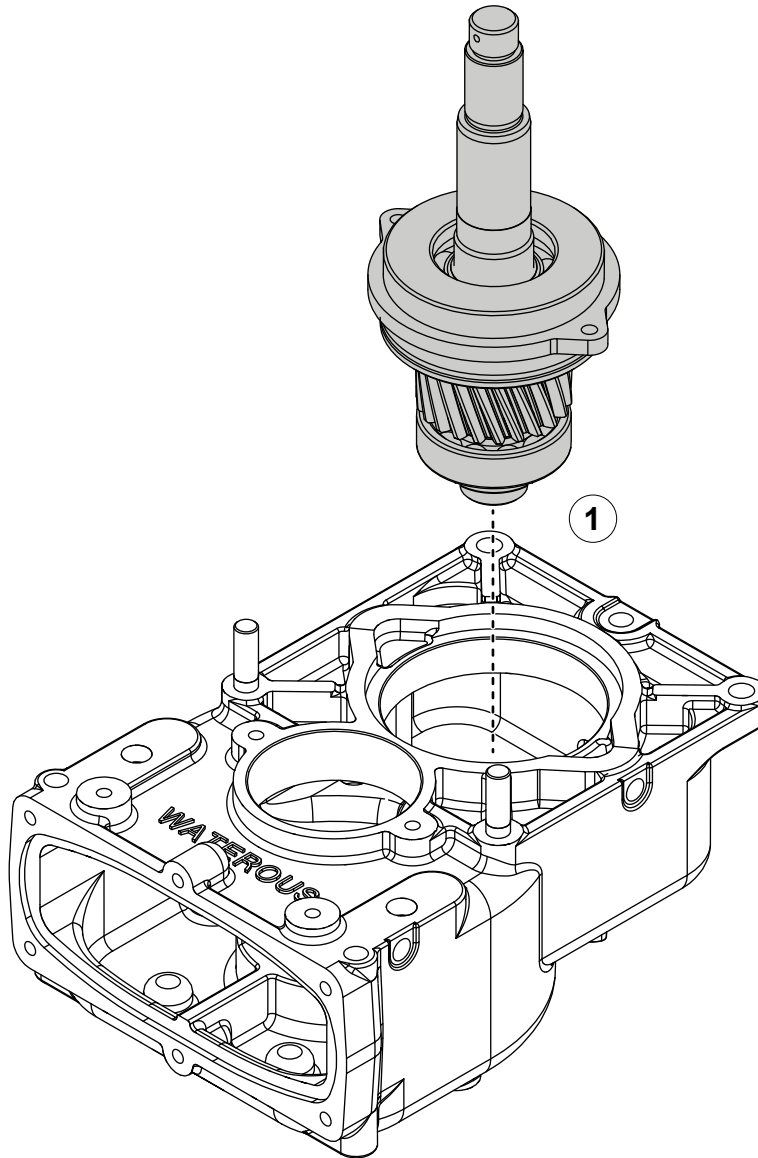
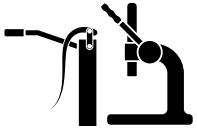
Assembling the Driven Shaft

Use the illustrations and instructions to assemble the driven shaft.

- 7 Align the inner tab on the bearing lock washer with the keyway on the shaft.
- 8 Install the bearing lock nut onto the shaft—finger tighten, then an additional 1/4 turn.
- 9 To lock the bearing lock nut, do the following:
 - Thread the bearing lock nut onto the impeller shaft until it contacts the bearing lock washer.
 - Apply a minimum of 1/4 turn.
 - Continue turning until a tab on the bearing lock washer aligns with a notch on the bearing lock nut.
- 10 Fold an aligned tab into one of the bearing lock notches to lock the bearing lock nut in place.



RF600 Pumps with One Piece Impeller Shaft

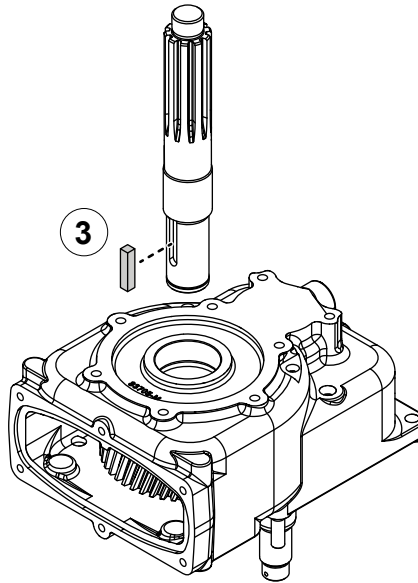
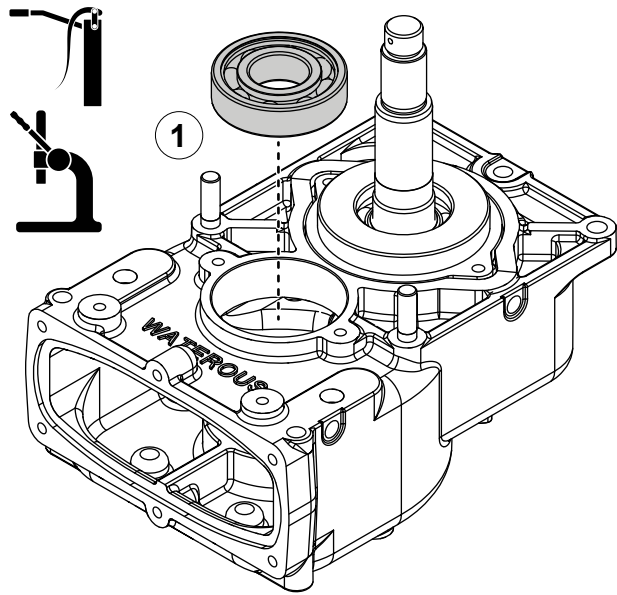


Installing the Driven Gear Assembly

Use the illustration and instructions to install the driven gear assembly into the case.

- 1 Apply grease to the outer bearing race, then press the driven shaft assembly into the case.

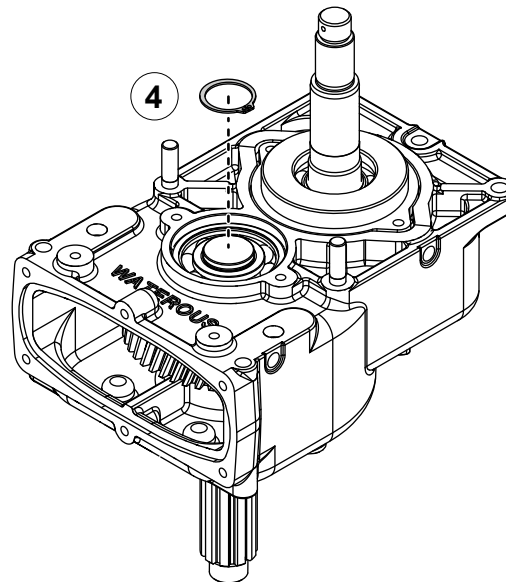
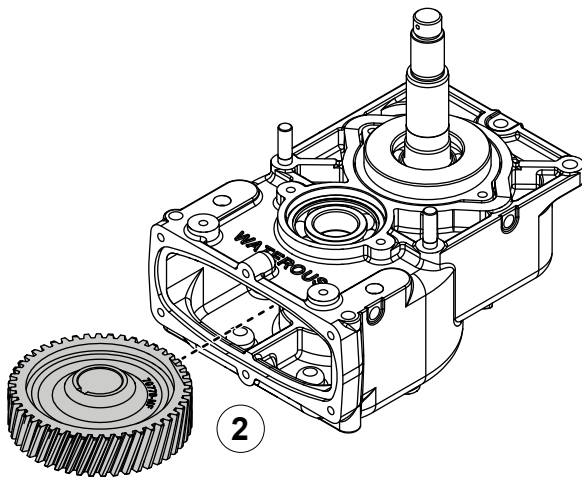
RF600 Pumps with One Piece Impeller Shaft



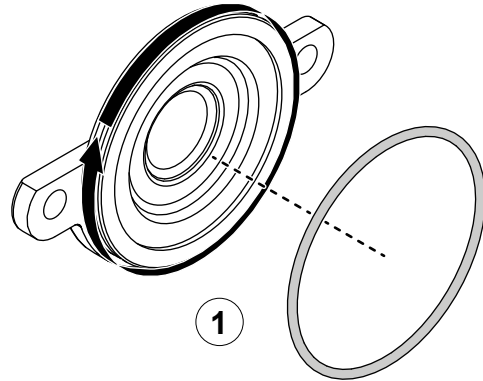
Installing the Drive Shaft Components

Use the illustrations and instructions to assemble the drive shaft assembly.

- 1 Apply grease to the outer bearing race, then press the bearing into the case.
- 2 Align the drive gear below the bearing.
- 3 To complete this sequence, do the following:
 - Install the key into the keyway.
 - Apply grease to the drive shaft.
 - Align the key on the drive shaft with the keyway on the driven gear, then press the assembly together.
- 4 Flip the case over, then install the retaining ring.



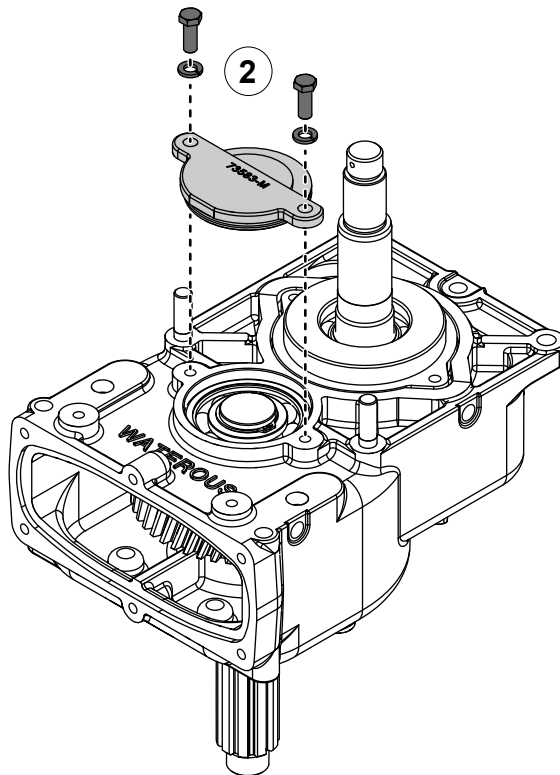
RF600 Pumps with One Piece Impeller Shaft



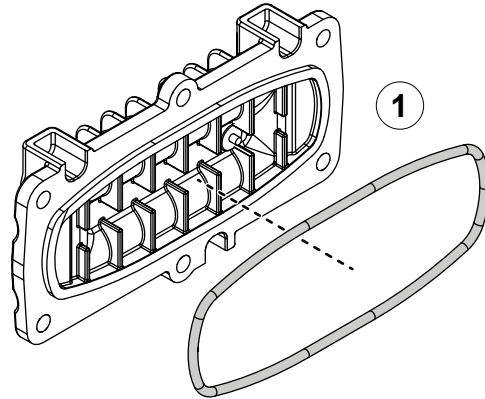
Installing the Bearing Cover

Use the illustrations and instructions to install the bearing cover.

- 1 Apply lubricant to the O-ring groove, then install the O-ring around the bearing cover.
- 2 Use the hardware that you removed earlier to install the bearing cover.



RF600 Pumps with One Piece Impeller Shaft

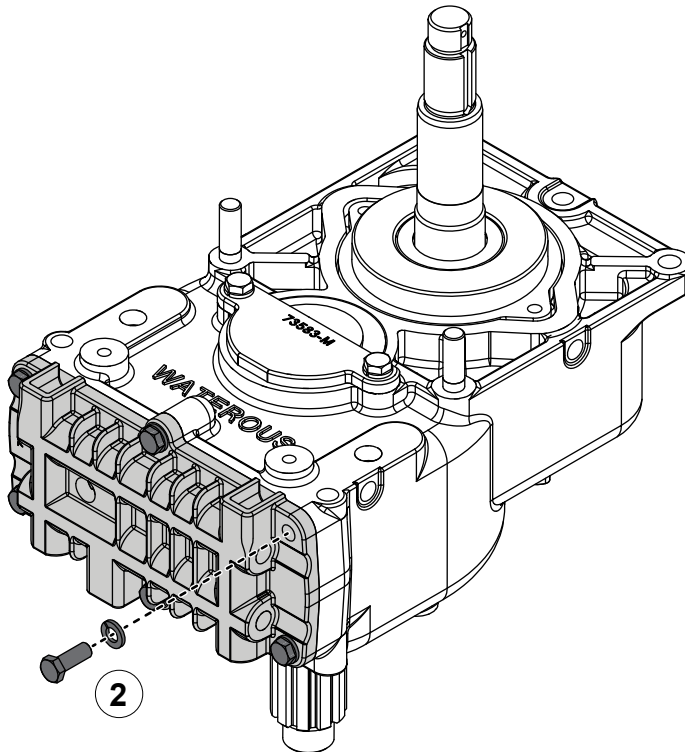


Installing the Bottom Cover

Use the illustrations and instructions to install the bottom cover.

Note: Refer to the SPL for your application to determine the bottom cover orientation.

- 1 Apply lubricant around the O-ring, then install it on the bottom cover.
- 2 Use the hardware that you removed earlier to install the bottom cover.



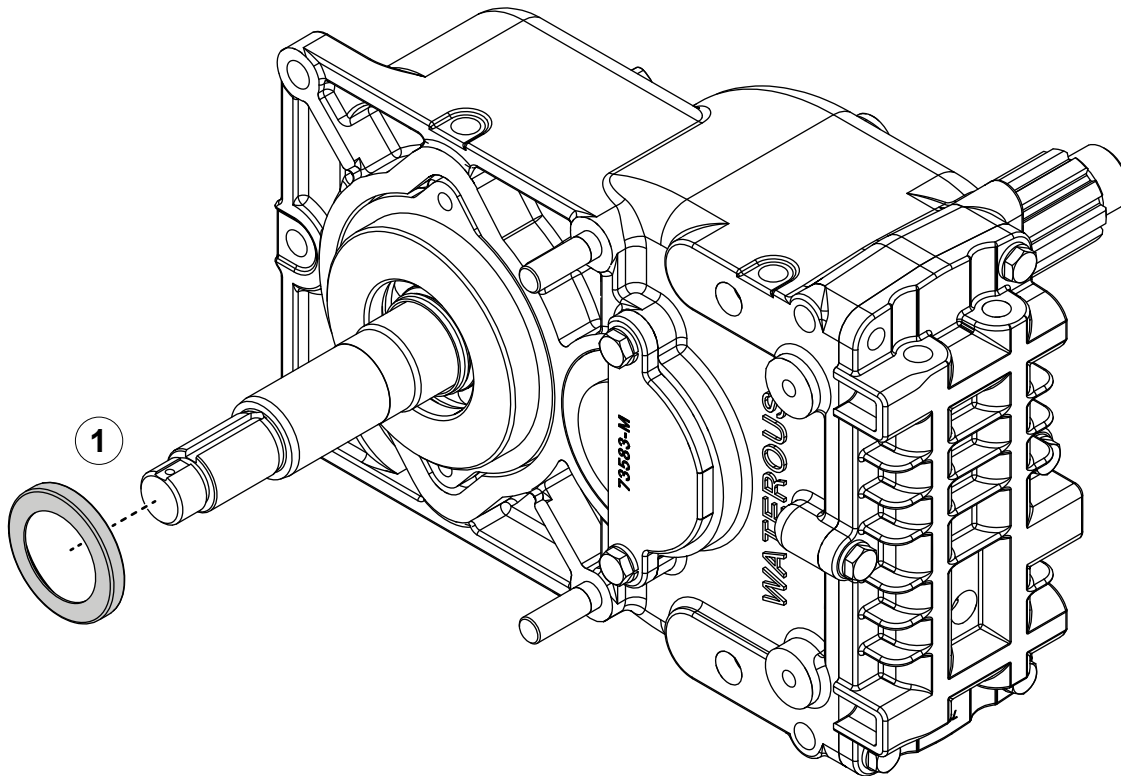
RF600 Pumps with One Piece Impeller Shaft



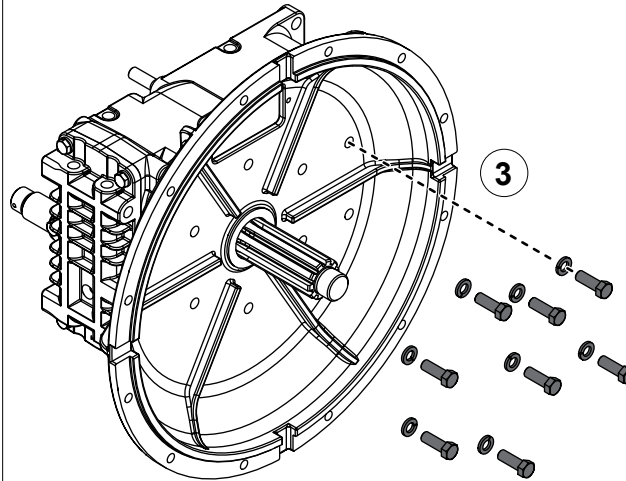
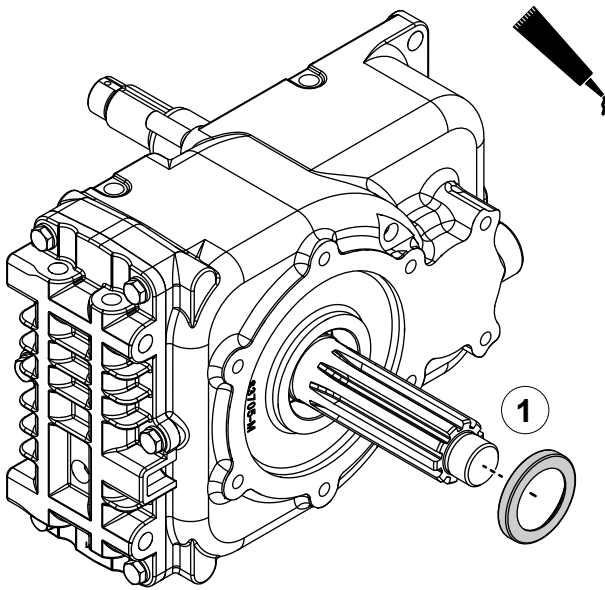
Installing the Oil Seal

Use the illustration and instructions to install the oil seal.

- 1 Apply sealant to the oil seal, then install it onto the impeller shaft.



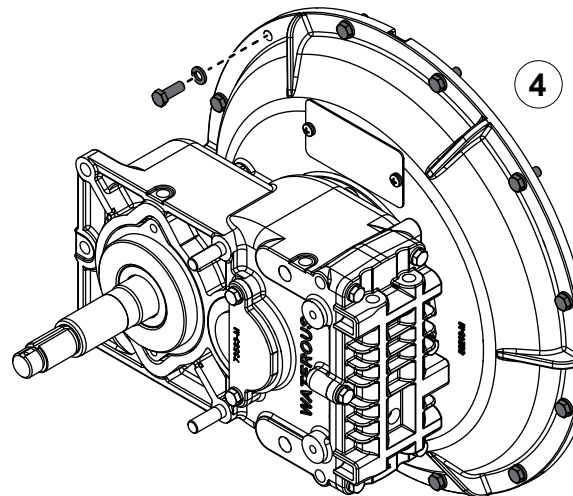
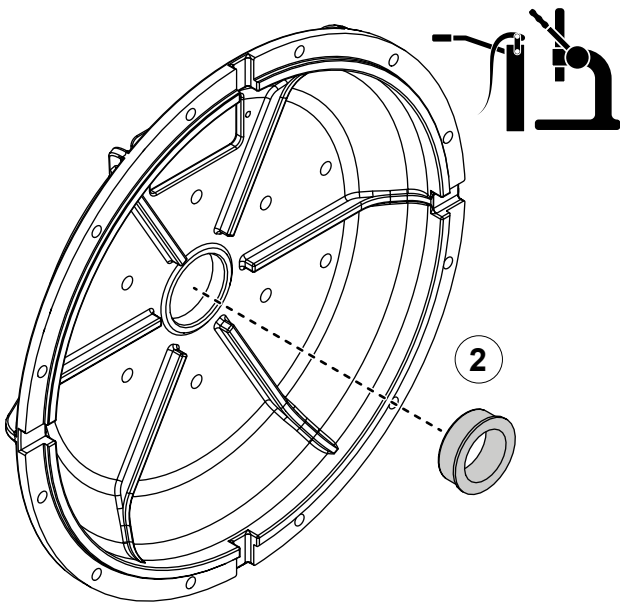
RF600 Pumps with One Piece Impeller Shaft



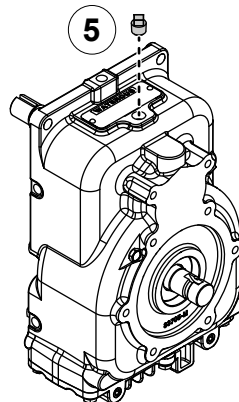
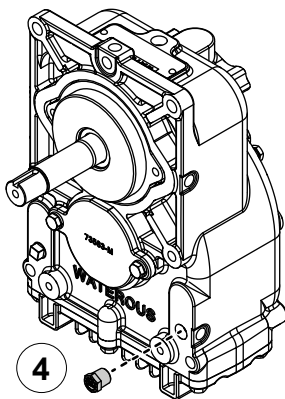
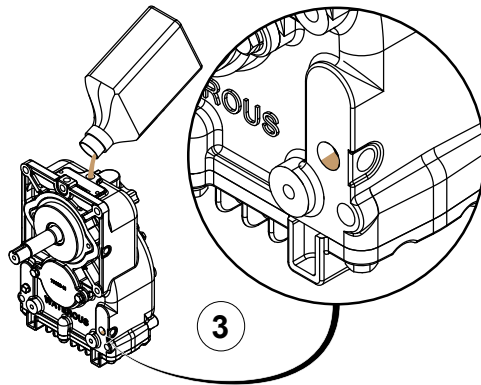
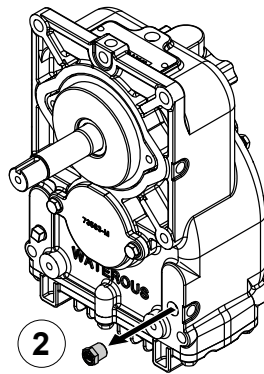
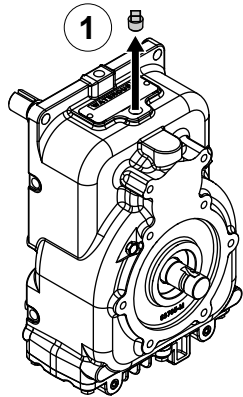
Installing the Bellhousing Adapter

Use the illustrations and instructions to install the bellhousing adapter.

- 1 Apply sealant to the oil seal, then install it onto the drive shaft.
- 2 Apply grease to the bushing, then press it into the bellhousing adapter.
- 3 Use the hardware that you removed earlier to secure the bellhousing adapter to the transmission case.
- 4 Use the hardware that you removed earlier to secure the bellhousing adapter to the engine.



Adding Oil to the Transmission



Use the illustrations and instructions to add oil to the transmission.

Note: The illustrations may not represent your specific transmission orientation. Refer to the SPL for your application to locate the oil fill and oil level plugs.

Refer to the documentation provided with your equipment to determine the correct type and amount of lubricant for your application.

- 1 Remove and set aside the oil fill plug.
- 2 Remove and set aside the oil level plug.
- 3 Add lubricant to the transmission.

Note: After pouring some oil into the case, allow it to settle before adding more to avoid over-filling.

- 4 Install the oil level plug.
- 5 Install the oil fill plug.

This image shows a full page of blank, lined paper. It features approximately 20 evenly spaced horizontal grey lines across its entire width, providing a template for writing or drawing. The margins are consistent on all sides.

WATEROUS

Waterous Company
125 Hardman Avenue South
South Saint Paul, MN 55075
(651) 450-5000
www.waterousco.com