

WATEROUS

Form Number: F-2916

Issue Date: Aug 23, 2021

Revision Date: Oct 25, 2024

TQB Power Take-Off

Overhaul

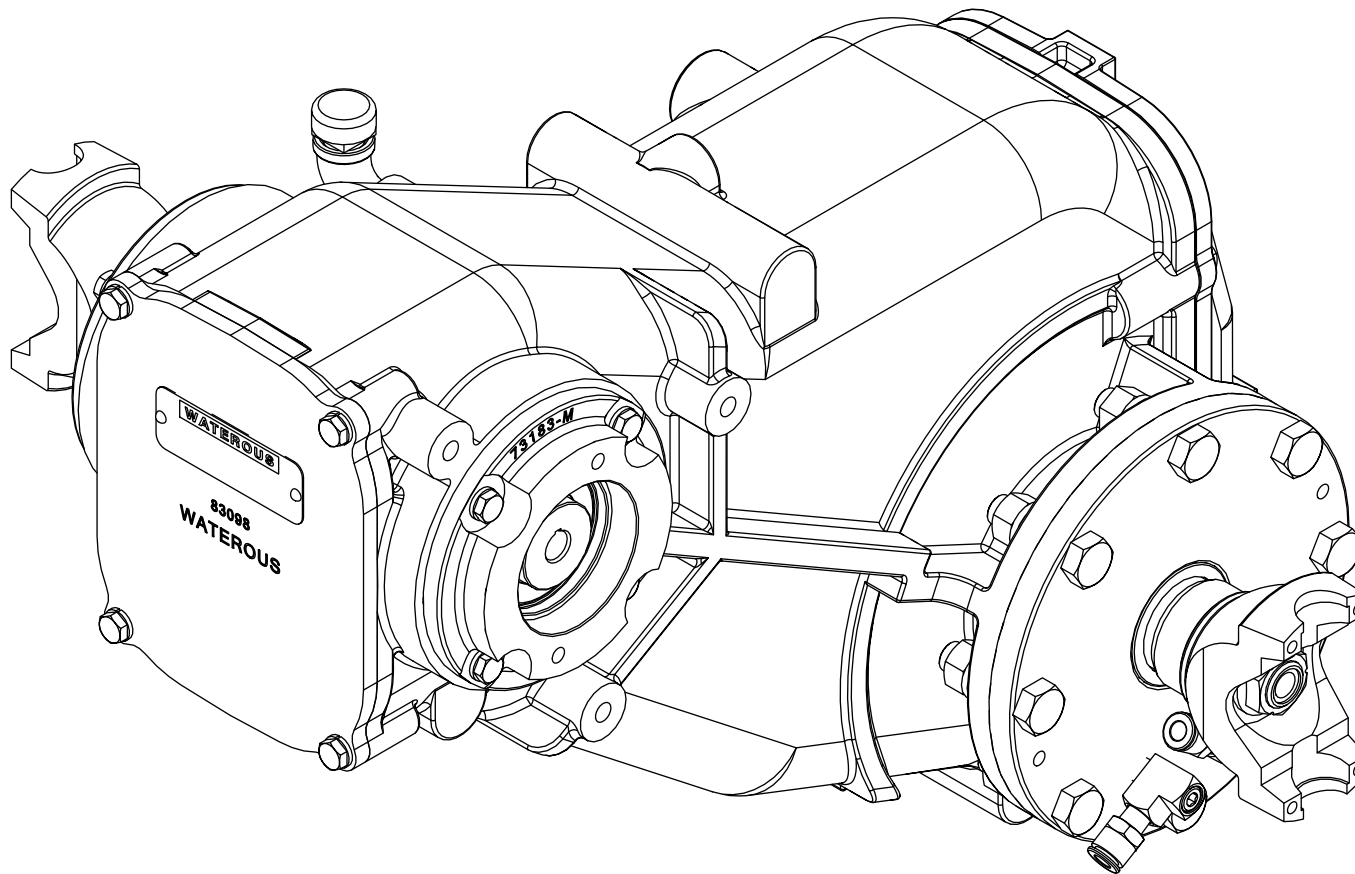



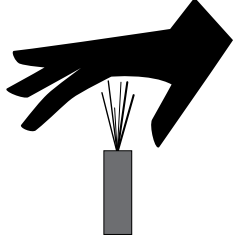
Table of Contents

Safety	4	Assembly	21
Safety Precautions	4	Preparing to Assemble the Power Take-Off	21
Introduction	5	Tools Required	21
Using this Document	5	Best Practices	21
Viewing the Document Electronically	5	Assembling the Power Take-Off Components	21
Printing the Document	5	Installing the Power Take-Off	21
Additional Documentation	5	Power Take-Off Assembly—Driveline	22
Symbols	5	Assembling the Driven Shaft	23
Identifying Exterior Components—Output Side and Bottom Pan	6	Installing the Driven Components	24
Identifying Exterior Components—Output Side and Top Cover	7	Assembling the Drive Shaft	25
Disassembly	8	Installing the Drive Components	26
Preparing to Disassemble the Power Take-Off	8	Installing the Output-Side Oil Seal Housing	27
Tools Required	8	Installing the Bearing Cover	29
Preparing the Apparatus	8	Installing the Hydraulic Pump Adapter	30
Best Practices	8	Installing the Input-Side Oil Seal Housing	31
Removing the Power Take-Off	8	Installing the Chain	32
Disassembling the Power Take-Off Components	8	Installing the Bottom Pan	34
Draining the Lubricant	9	Installing the Top Cover	35
Removing the End Yokes	10	Installing the Input-Side End Yoke	36
Removing the Top Cover	11	Installing the Output-Side End Yoke	37
Removing the Bottom Pan	12	Adding Lubricant to the Power Take-Off	38
Removing the Chain	13		
Removing the Oil Seal Housing and Bearing Cover	14		
Removing the Hydraulic Pump Adapter and Oil Seal Housing	15		
Removing the Drive Components	16		

Safety Precautions

- Read and understand all the associated documentation before you begin operating the product.
- Contact Waterous when you have questions about operating or maintaining the equipment.
- Read and understand all the notices and safety precautions.
- Do not operate the equipment when safety guards are removed.
- Do not modify the equipment.

 WARNING	
Hot Surface <ul style="list-style-type: none">• Hot surfaces can burn you.• Components reach high temperatures during operation—wear protective equipment when making adjustments.	

 WARNING	
High Pressure <ul style="list-style-type: none">• Liquid ejected at high pressure can cause serious injury.• Drain the pump after use and before servicing.	

Use this document to overhaul your Waterous equipment. Understand the following conditions before proceeding:

- Be aware that these instructions are only guidelines and are not meant to be definitive. Contact Waterous when you have questions.
- Understand that your configuration may require additional steps that are not described in the illustrations or instructions to perform the overhaul.
- The equipment described in this document is intended to be overhauled by a person or persons with the necessary skills and knowledge to perform the overhaul.
- The information in this document is subject to change without notice.

This document is divided into the following sections:

SAFETY

This section describes general precautions and alert symbols in the document.

INTRODUCTION

This section is an overview of the document.

DISASSEMBLY

This section describes disassembly procedures.

ASSEMBLY

This section describes assembly procedures.

Using this Document

Use the guidelines below when viewing this document.

Viewing the Document Electronically

- View this document in landscape orientation.
- Use the table of contents to navigate directly to that section.
- Text **with this appearance** is linked to a reference.

Printing the Document

- The document is designed to be printed on both sides and in color.
- Use a 3-ring binder to store the document.

Additional Documentation

Additional documentation is available through the MyWaterous login at waterousco.com. Use your serial number to gain access to the service parts list (SPL) associated with your system. Dimensional drawings are available through the Waterous Service department.

Symbols

Symbols are used to illustrate additional tools or operations that are required to complete the instructions.



Anti-seize compound—This symbol tells you to apply the appropriate anti-seize compound to the part.



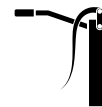
Arbor press—This symbol tells you to use an arbor press to complete this step.



Discard—This symbol tells you to discard or recycle the part in accordance with local regulations.



Finger tight, then quarter turn—This symbol tells you to secure the hardware to finger tight, then use a wrench to turn the hardware an additional quarter turn.



High-pressure grease—This symbol tells you to apply high-pressure grease to the surfaces that you are pressing together.



Sealant—This symbol tells you to apply the appropriate sealant to the part.

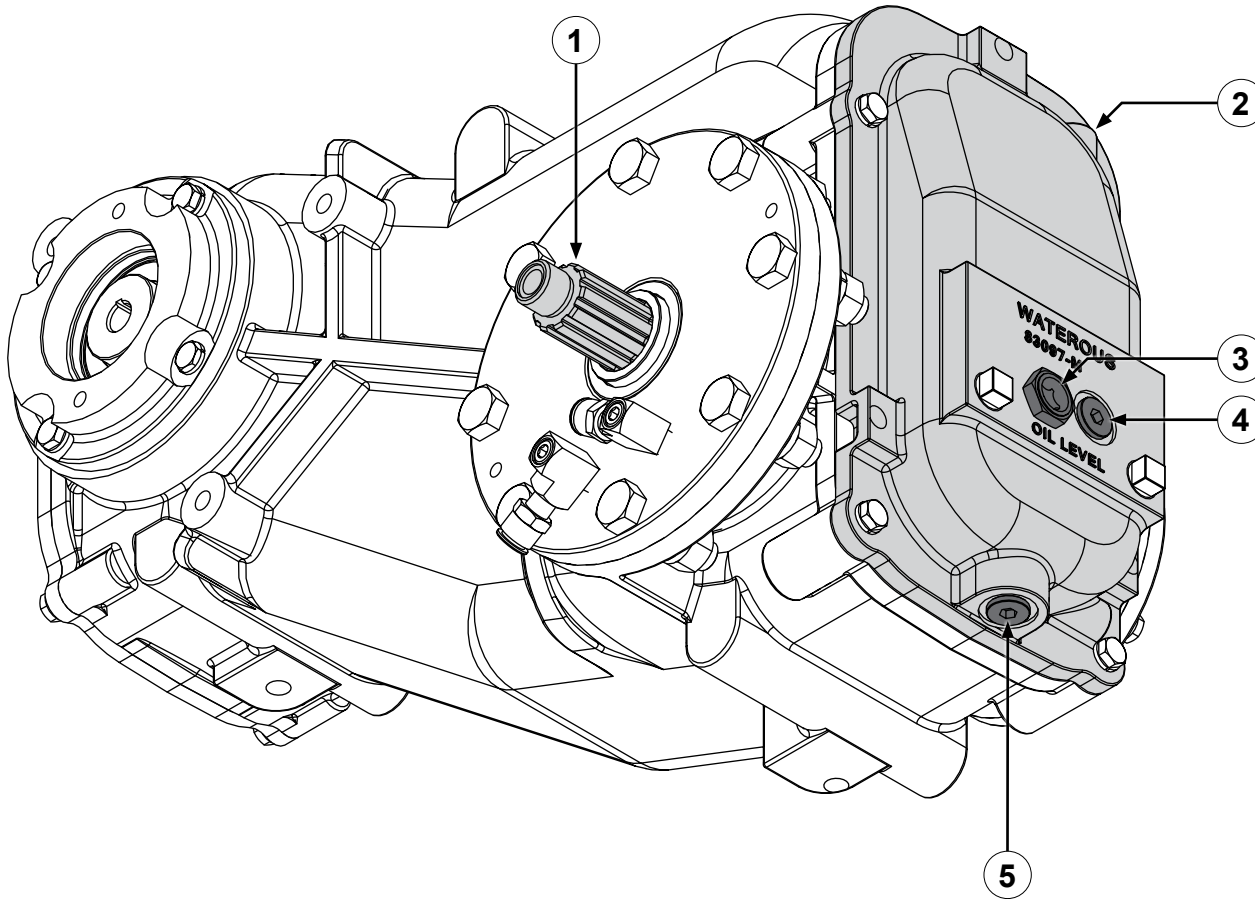


Torque to specification—This symbol tells you to torque the hardware to the specified value.

Identifying Exterior Components—Output Side and Bottom Pan

Use the illustration to identify various components on the power take-off (PTO).

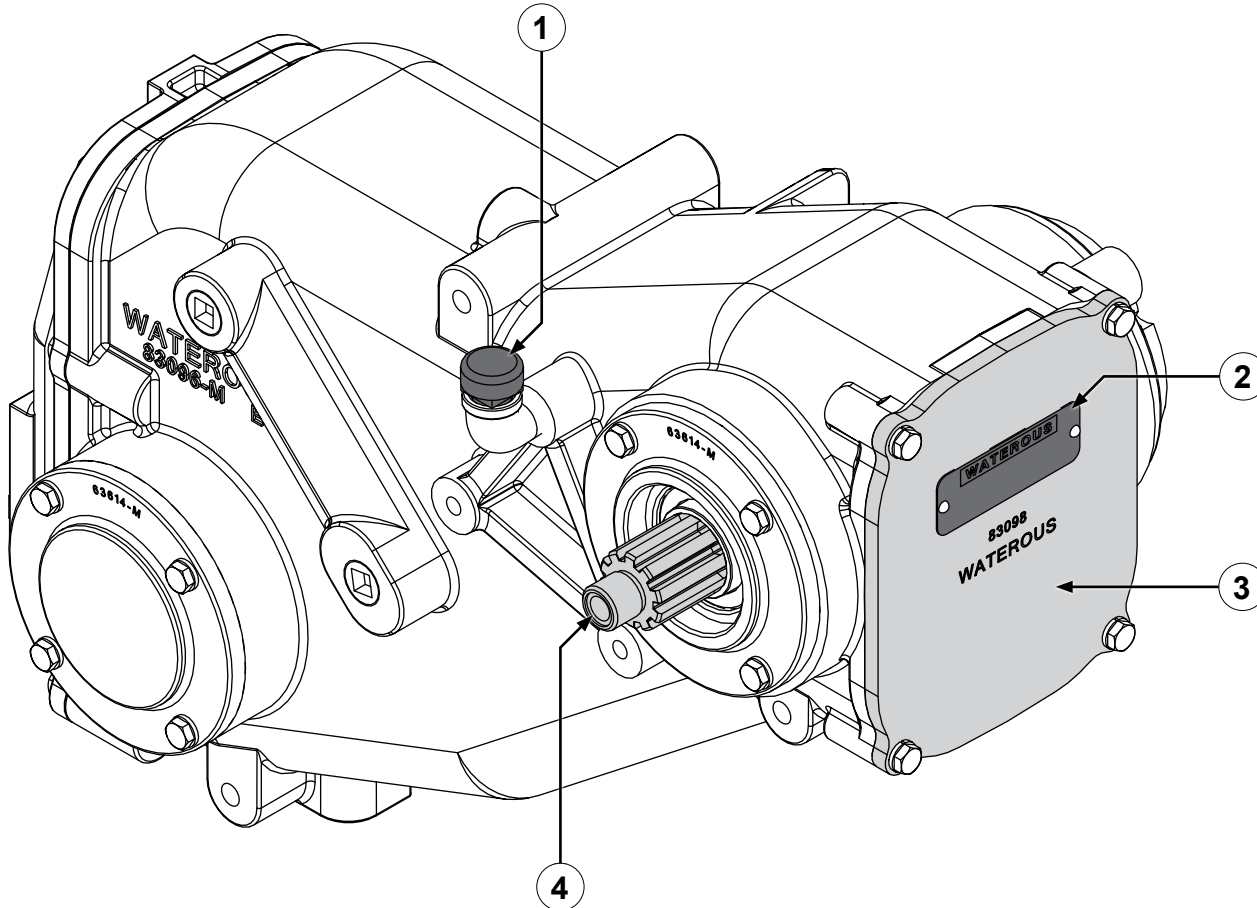
- 1 Driven shaft
- 2 Bottom pan
- 3 Oil level sight plug
- 4 Oil fill plug
- 5 Oil drain plug



Identifying Exterior Components—Output Side and Top Cover

Use the illustration to identify various components on the PTO.

- | | |
|---|--------------|
| 1 | Breather |
| 2 | Serial plate |
| 3 | Top cover |
| 4 | Drive shaft |



Preparing to Disassemble the Equipment

- Read and understand the instructions before disassembling the equipment.
- Prepare a workspace suitable to accommodate and support the equipment.
- Gather the necessary tools, cleaning cloths, brushes, and penetrating fluids.
- Understand that your configuration may require additional steps, that are not described in the illustrations or instructions, to perform the disassembly.
- This equipment is intended to be disassembled by a person or persons with the basic knowledge of servicing similar equipment. Contact Waterous with questions.

Tools Required

- Typical automotive mechanics hand tools.
- Suitable arbor press.
- Suitable support and lifting equipment.

Preparing the Apparatus

- Park the apparatus on a level surface in a well-lit area.
- Engage the parking brake.
- Shut off the engine and remove the key from the ignition switch.
- Allow the apparatus to cool before servicing.

Best Practices

- Remove any dirt, sand, grease, or oil from the enclosure before you disassemble the equipment. Surface debris can transfer into the interior and prematurely wear internal parts.
- Only use a clean, lint-free cloth, a debris-free work surface, and properly maintained tools to perform the disassembly.
- Replace any gaskets and O-ring seals during the overhaul.
- Do not reuse the lock nuts.
- Apply penetrating oil to screws and nuts before disassembly.

Removing the Equipment

Removing the equipment for overhaul varies by application. Your application may require that components such as cooling lines, support brackets, plumbing connections, and other accessories be removed or disconnected before removal.

Record the process used to remove the equipment from the apparatus. Use this information to install the equipment into the apparatus after the overhaul.

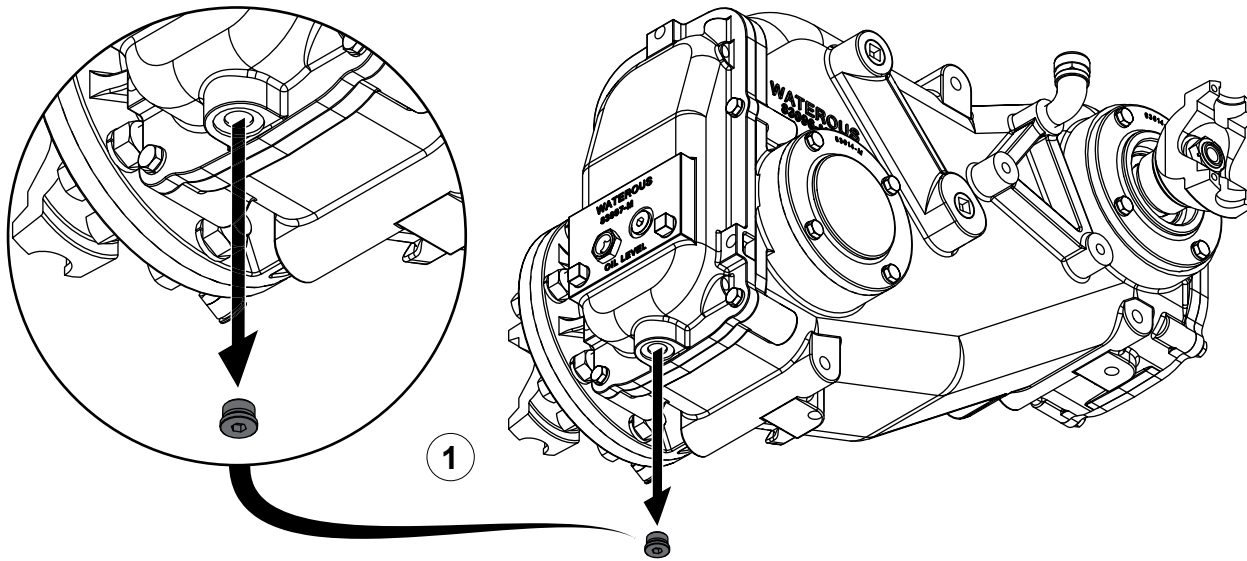
Disassembling the Components

- Refer to the SPL for part identification and disassembly order.

Note: Documents specific to your application are available through the MyWaterous login at waterousco.com by entering the serial number for your system. Depending on the application, the serial number for your equipment is located on the operator panel, pump, PTO, or some combination of the three.

- Use established industry practices to disassemble the equipment.
- Record or mark components as you remove them to make sure that you install them in the same orientation.
- Discard or recycle drained fluids collected during the overhaul in accordance with your local regulations.

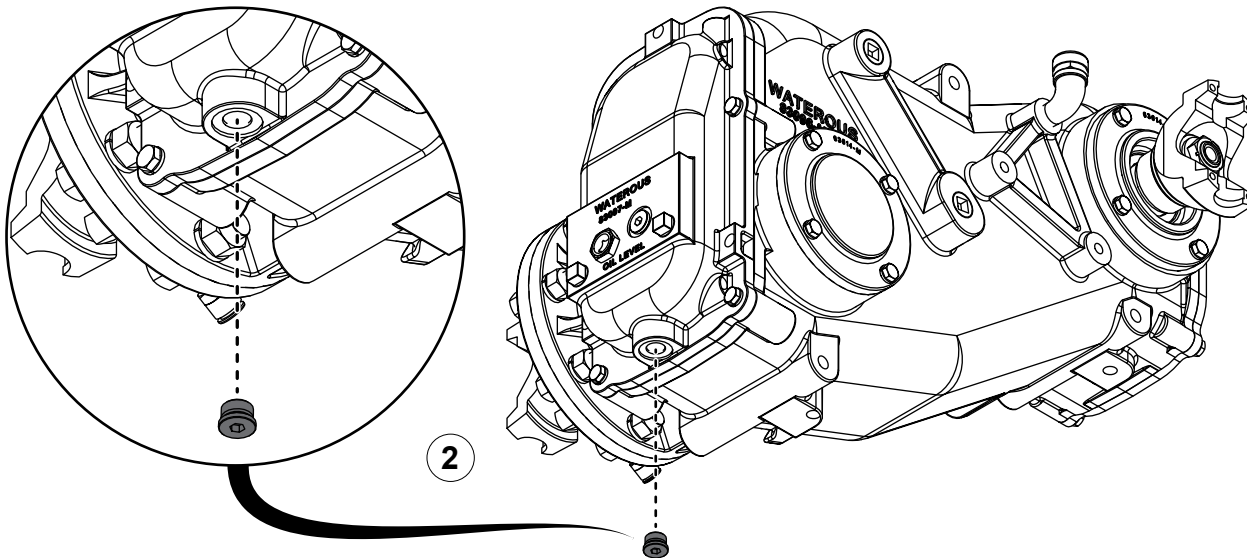
Draining the Lubricant



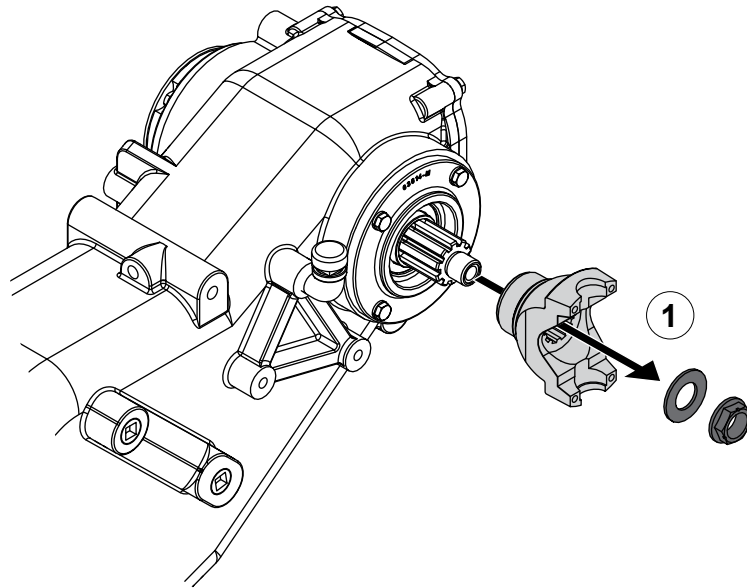
Use the illustrations and instructions to drain the lubricant from the PTO.

- 1 To drain the oil, do the following:
 - Use the sight plug to approximate the amount of oil in the PTO.
 - Place a suitable container under the PTO to collect the drained oil.
 - Remove the oil drain plug.
 - Allow the lubricant to drain.
- 2 Install the oil drain plug.

Note: Make sure that you do not over-tighten the oil drain plug.

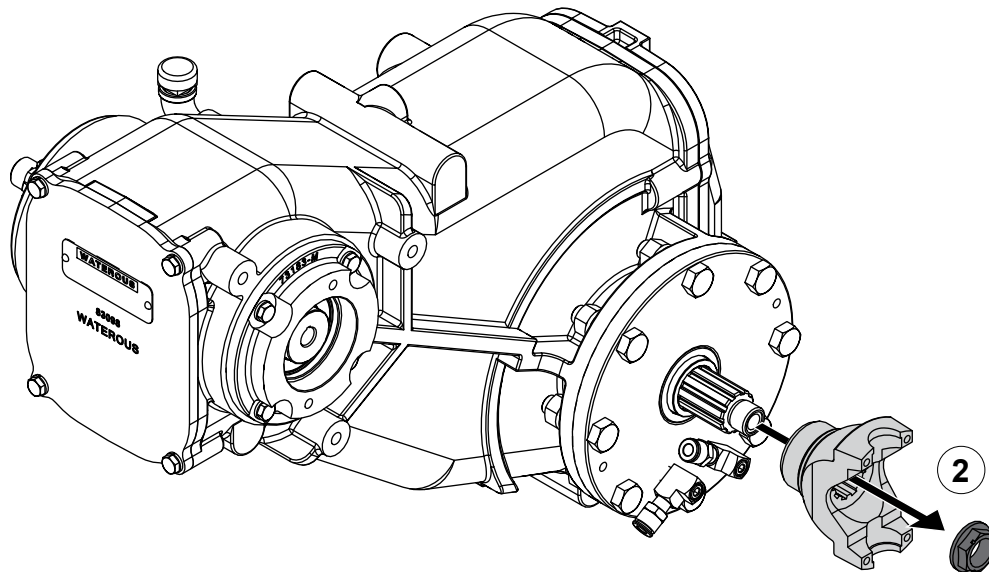


Removing the End Yokes

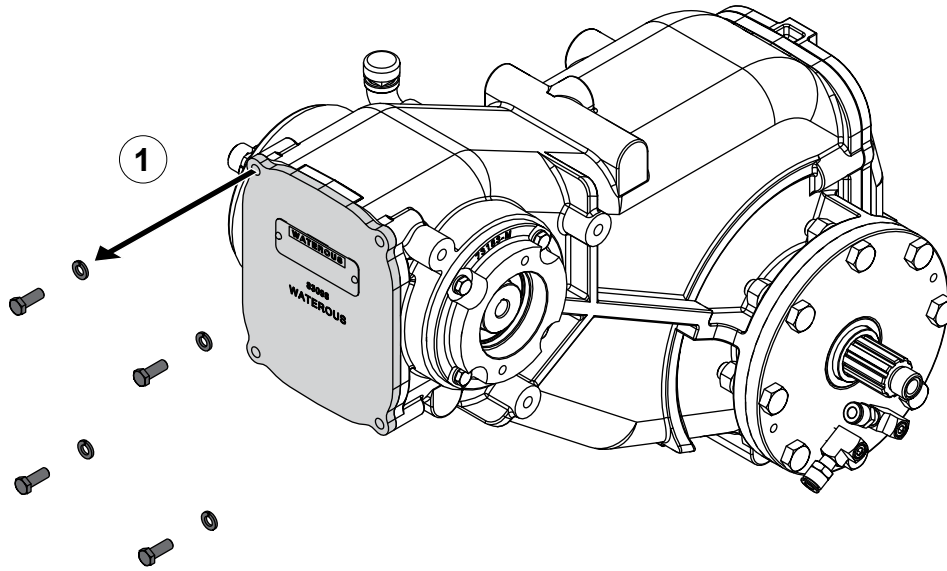


Use the illustrations and instructions to remove the end yokes.

- 1 Remove the lock nut and washer, then remove the end yoke.
- 2 Remove the lock nut, then remove the end yoke.

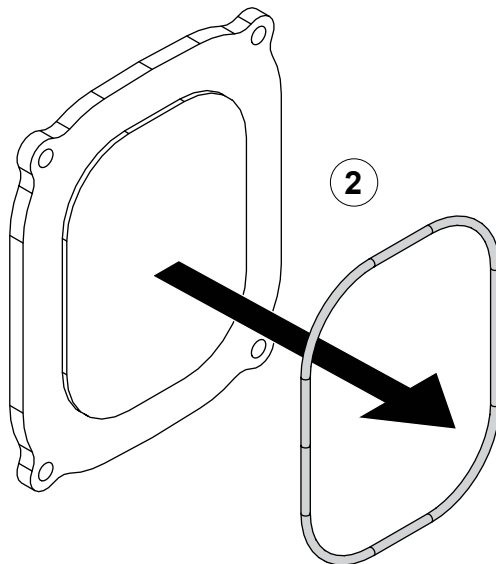


Removing the Top Cover

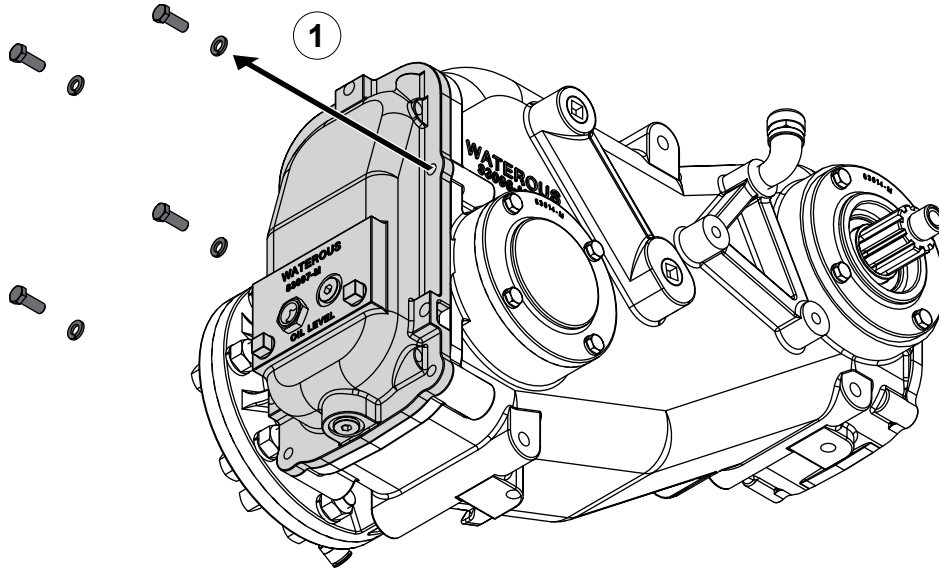


Use the illustrations and instructions to remove the top cover.

- 1 Remove the mounting hardware, then remove the top cover.
- 2 Remove and discard the O-ring.

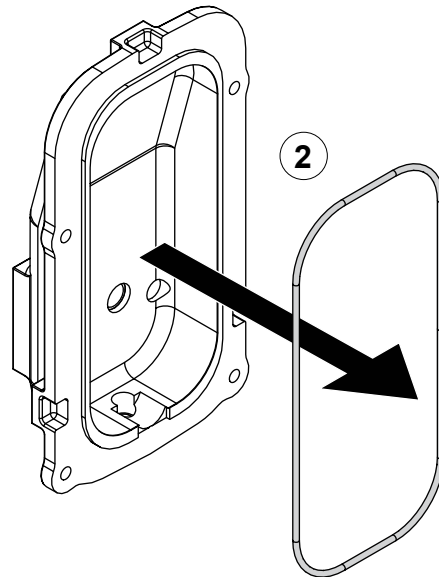


Removing the Bottom Pan

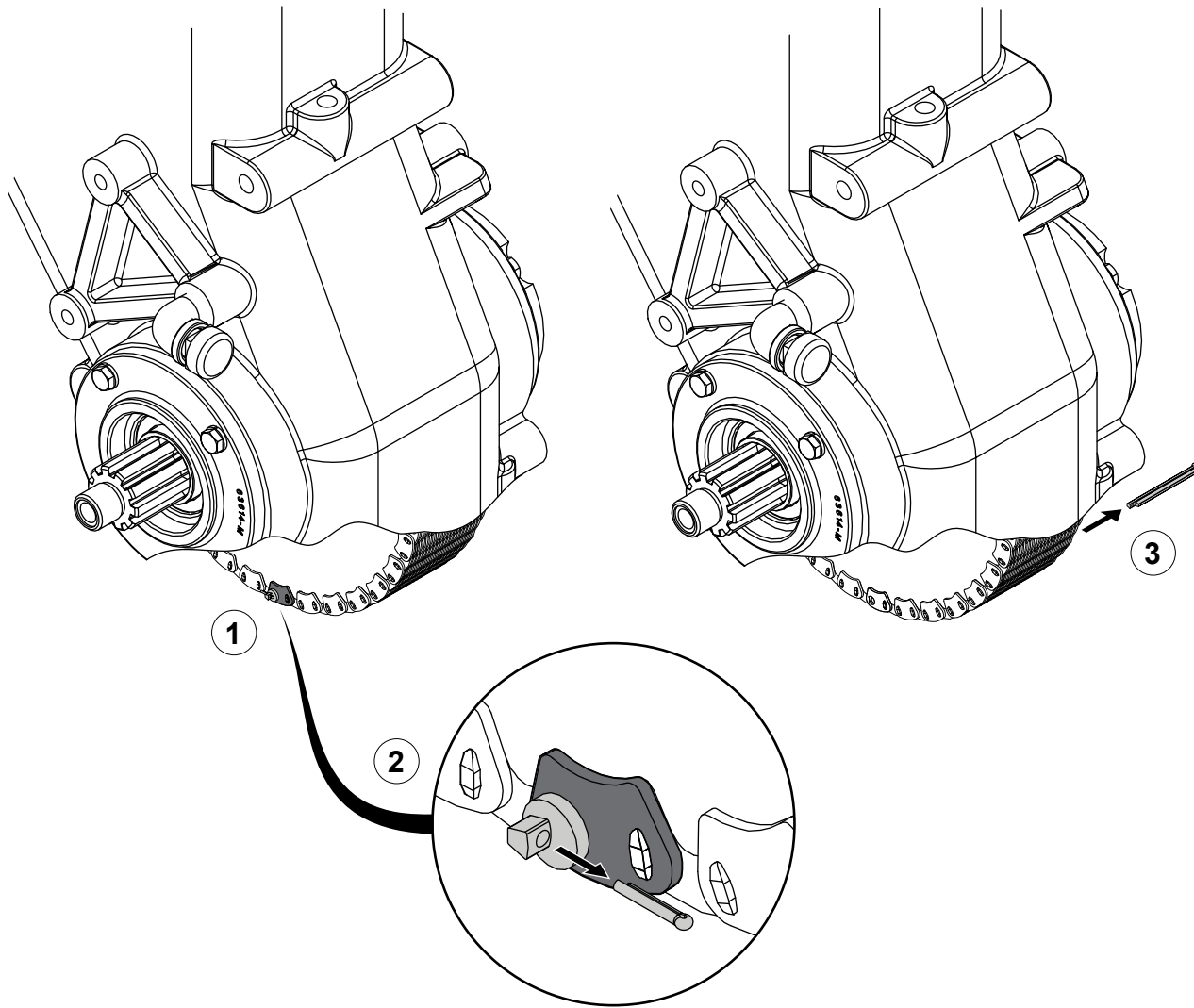


Use the illustrations and instructions to remove the bottom pan.

- 1 Remove the mounting hardware, then remove the bottom pan.
- 2 Remove and discard the O-ring.



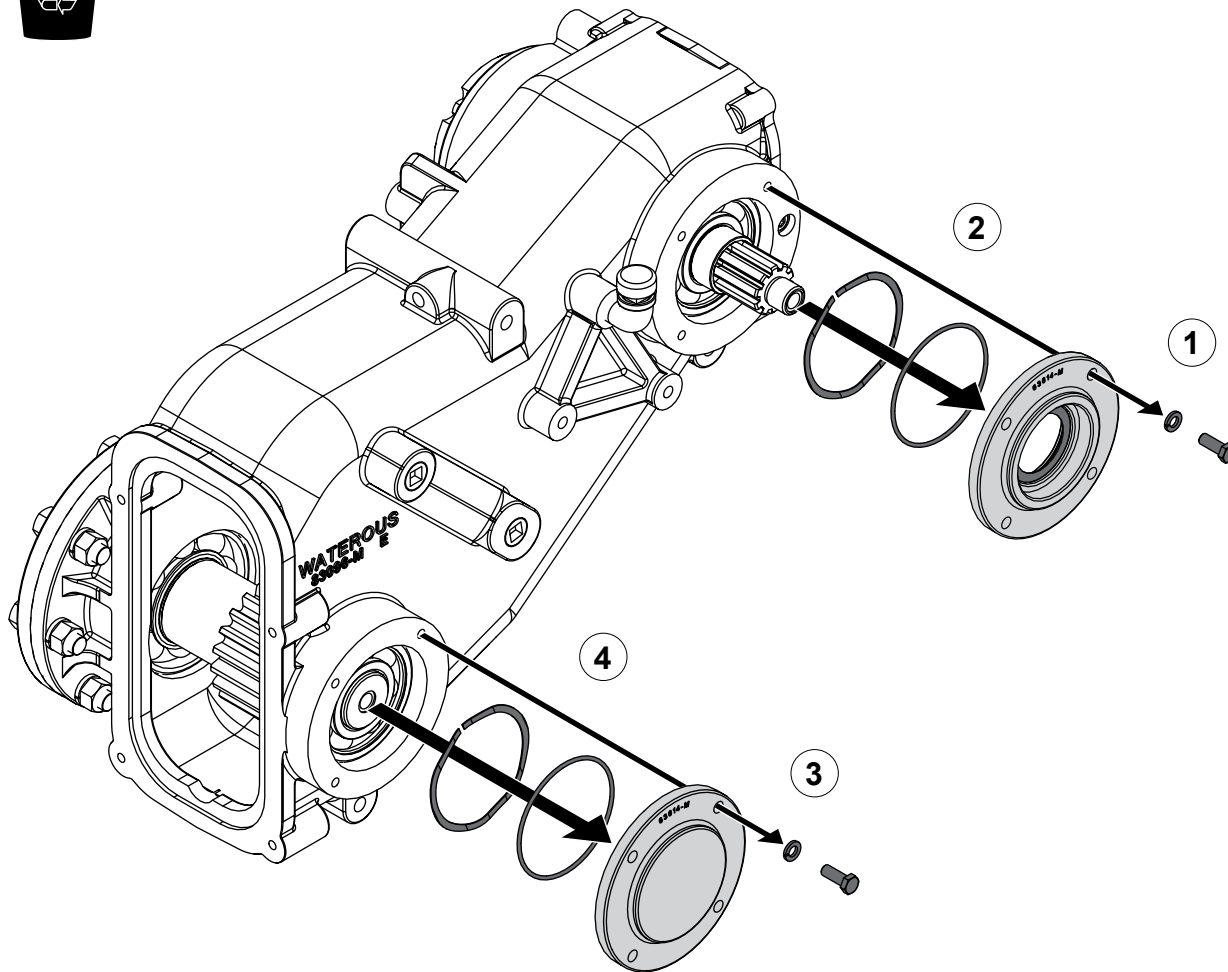
Removing the Chain



Use the illustrations and instructions to separate and remove the chain.

- 1 Locate the connecting link.
- 2 Use side cutters, needle-nose pliers, or a similar tool to remove the cotter pin.
Note: Replace the cotter pin if it is damaged during removal.
- 3 Remove the connecting pin set, then remove the chain.

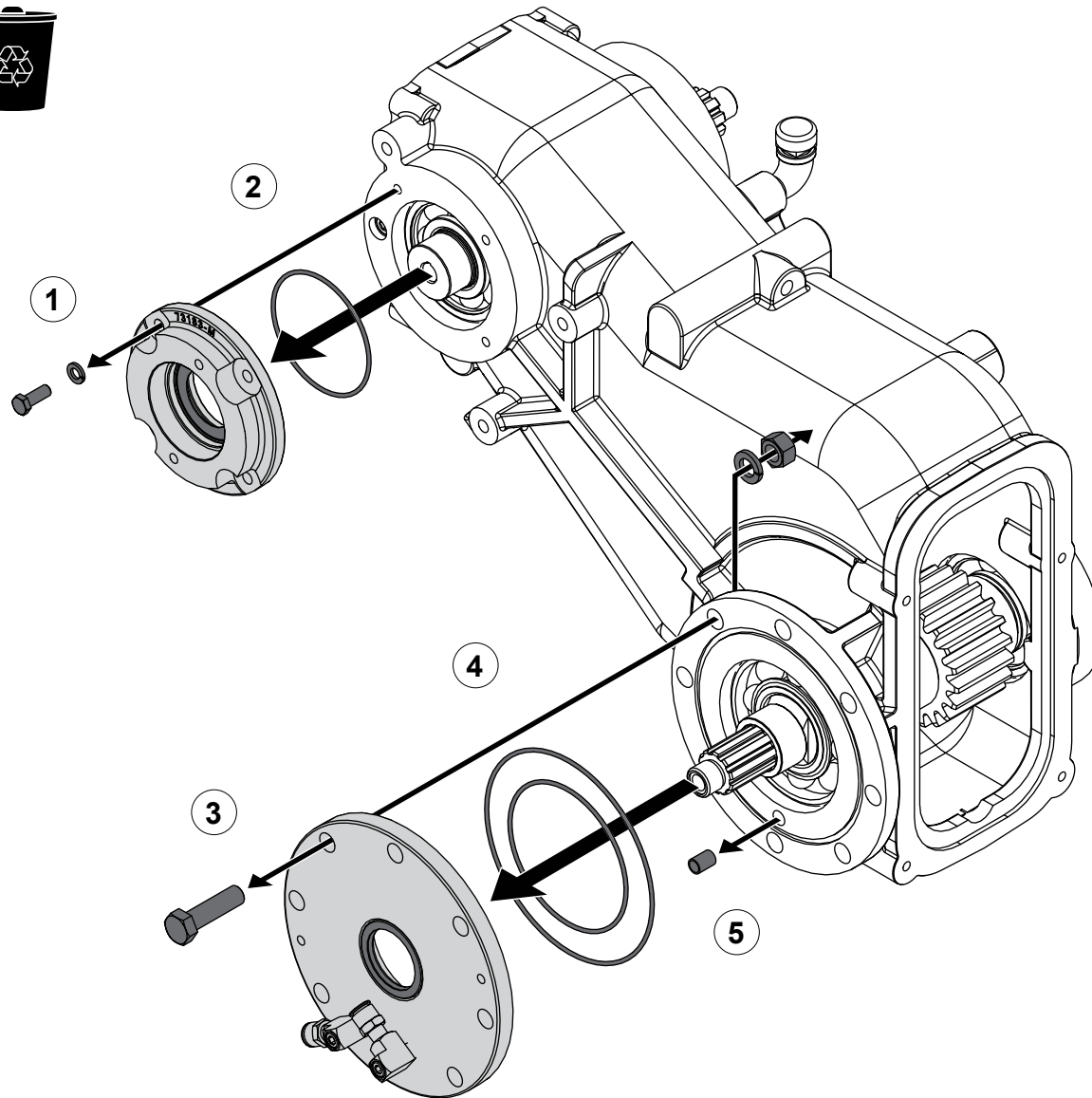
Removing the Oil Seal Housing and Bearing Cover



Use the illustration and instructions to remove the oil seal housing, bearing cover, and associated components.

- 1 Remove the mounting hardware, then remove the oil seal housing and oil seal.
- 2 Remove the O-ring and wave spring, then discard the O-ring.
- 3 Remove the mounting hardware, then remove the bearing cover.
- 4 Remove the O-ring and wave spring, then discard the O-ring.

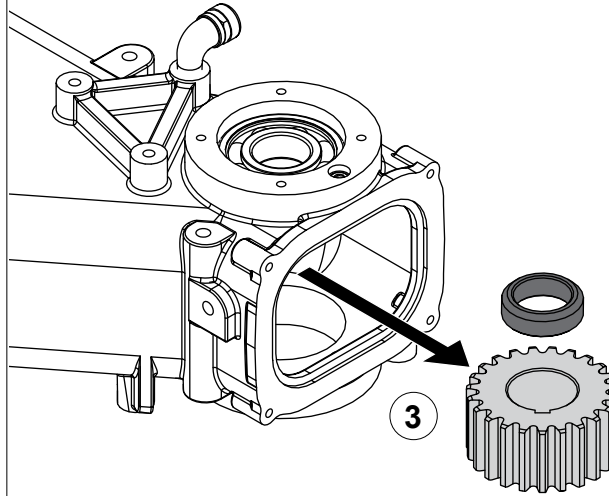
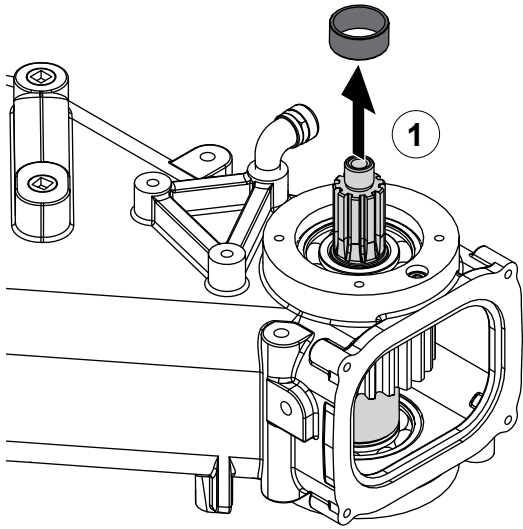
Removing the Hydraulic Pump Adapter and Oil Seal Housing



Use the illustration and instructions to remove the hydraulic pump adapter, oil seal housing, and associated components.

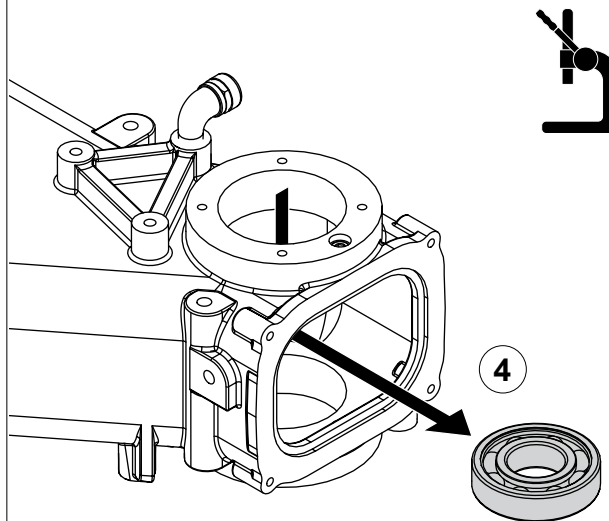
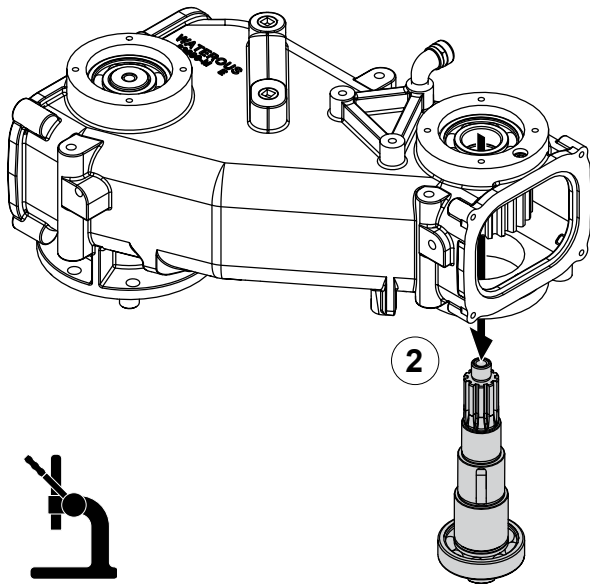
- 1 Remove the mounting hardware, then remove the hydraulic pump adapter and oil seal.
- 2 Remove and discard the O-ring.
- 3 Remove the mounting hardware, then remove the oil seal housing and oil seal.
- 4 Remove and discard the O-rings.
- 5 Remove the tube.

Removing the Drive Components

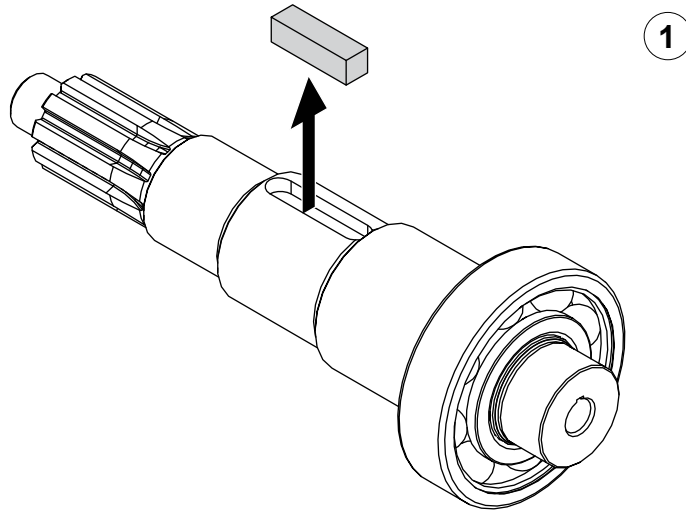


Use the illustrations and instructions to remove the drive shaft and associated components.

- 1 Remove the oil seal sleeve from the drive shaft.
- 2 Use an arbor press to remove the drive shaft and bearing.
- 3 Remove the spacer and drive sprocket from the chain case.
- 4 Use an arbor press to remove the bearing.

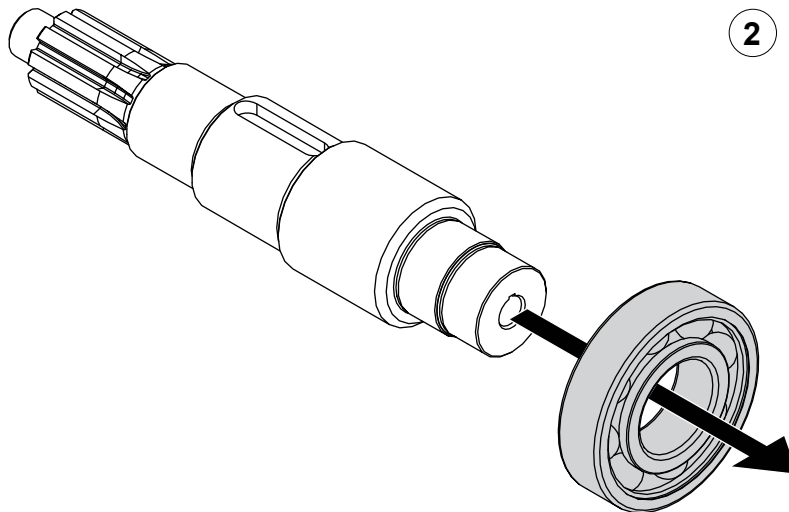
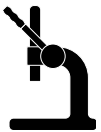


Disassembling the Drive Shaft

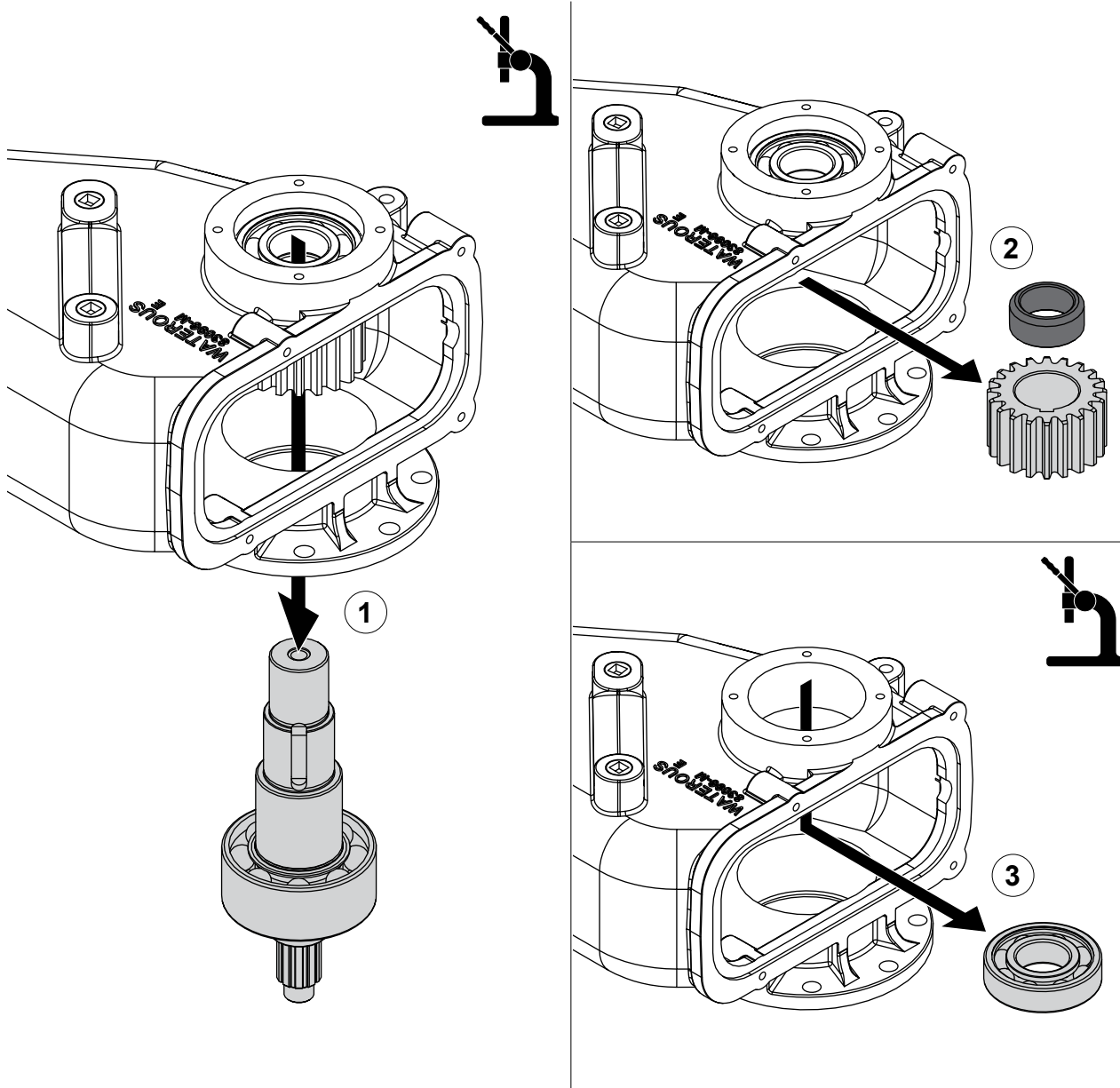


Use the illustrations and instructions to disassemble the drive shaft assembly.

- 1 Remove the key from the keyway.
- 2 Use an arbor press to remove the bearing from the shaft.



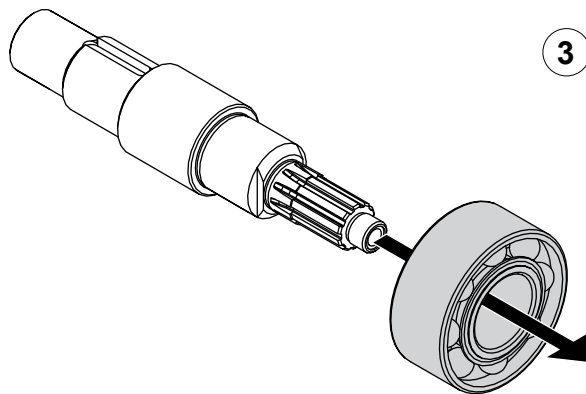
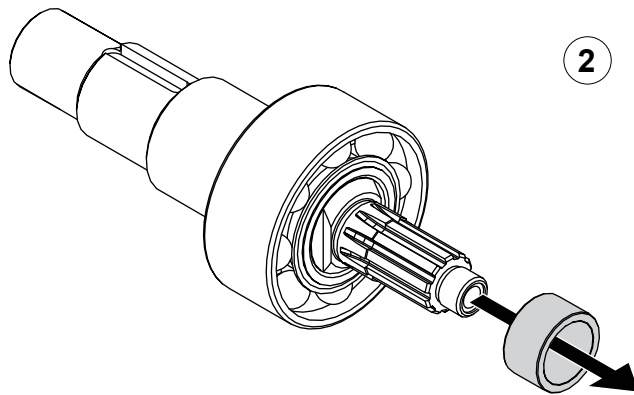
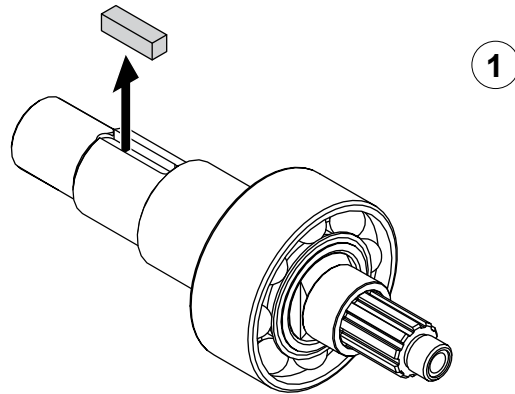
Removing the Driven Components



Use the illustrations and instructions to remove the driven shaft and associated components.

- 1 Use an arbor press to remove the driven shaft and bearing.
- 2 Remove the spacer and driven sprocket from the chain case.
- 3 Use an arbor press to remove the bearing.

Disassembling the Driven Shaft



Use the illustrations and instructions to disassemble the driven shaft assembly.

- 1 Remove the key from the keyway.
- 2 Remove the oil seal sleeve from the shaft.
- 3 Use an arbor press to remove the bearing from the shaft.



Preparing to Assemble the Equipment

- Read and understand the instructions before assembling the equipment.
- Prepare a workspace suitable to accommodate and support the equipment.
- Gather the necessary tools and assembly aids.
- Gather the overhaul components, such as lubricant, bearings, seals, and O-rings—only use equivalent components.
- Understand that your configuration may require additional steps that are not described in the illustrations or instructions to perform the assembly.
- This equipment is intended to be assembled by a person or persons with the basic knowledge of servicing similar equipment. Contact Waterous for more information.

Tools Required

- Typical automotive mechanics hand tools.
- Suitable arbor press.
- Torque wrench capable of 450 ft-lb (610 N·m).
- Suitable support and lifting equipment.

Best Practices

- Remove any dirt, sand, grease, or oil from the enclosure before you begin the overhaul. Surface debris can transfer into the interior and prematurely wear internal parts.
- Replace any gaskets and O-ring seals during the assembly.
- Do not reuse the lock nuts.
- Apply anti-seize compound to the lock nut threads before installation.

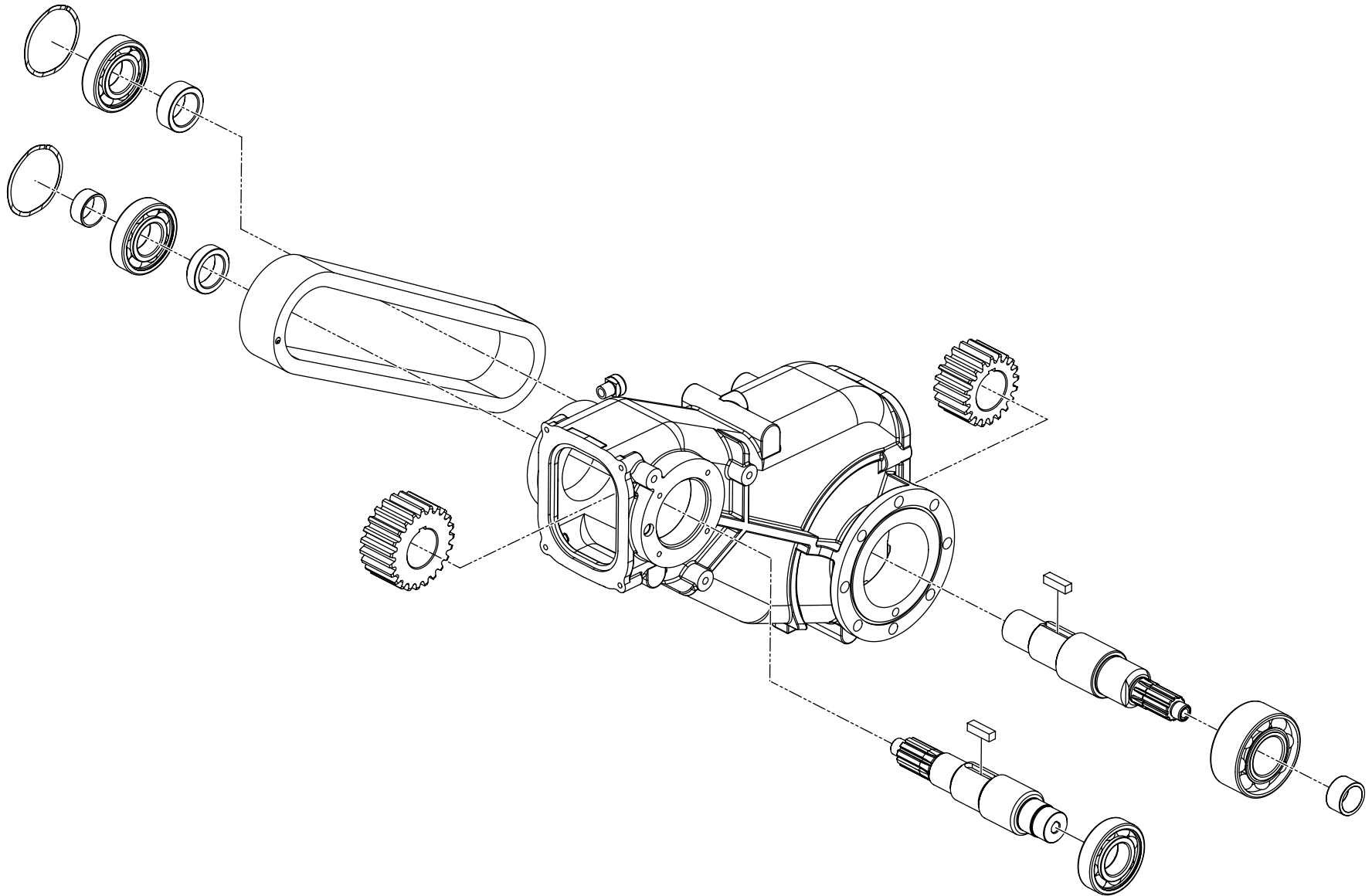
Assembling the Components

- Refer to the SPL for part identification.
 - Note:** Documents specific to your application are available through the MyWaterous login at waterousco.com by entering the serial number for your system. Depending on the application, the serial number for your equipment is located on the operator panel, pump, PTO, or some combination of the three.
- Use established industry practices to assemble the equipment.
- Tighten hardware to industry standard torque specification—unless otherwise noted.
- Make sure that you do not over-tighten the plugs.
- Replace items such as O-rings, bearings, gaskets, oil seals, lubricants, and lock nuts with their equivalent.

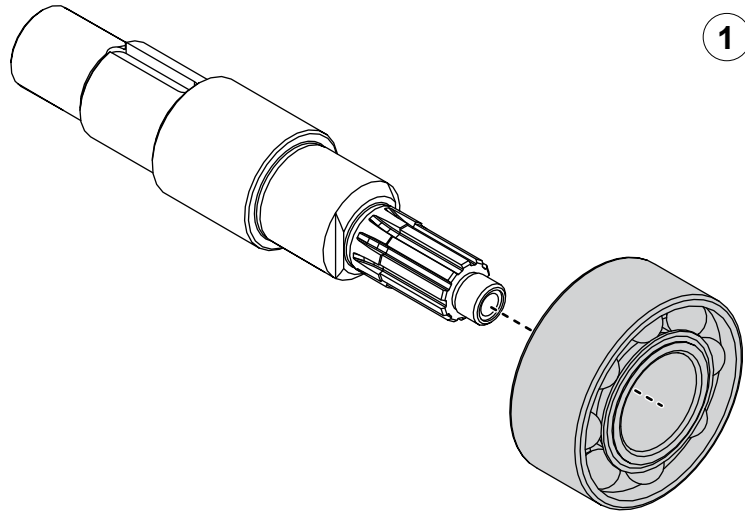
Installing the Equipment

Use the information that you recorded when you removed the equipment to install it back into the apparatus.

Power Take-Off Assembly—Driveline

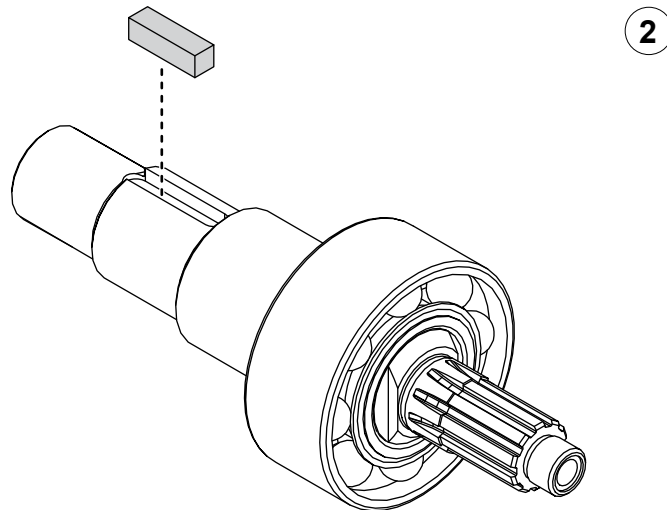
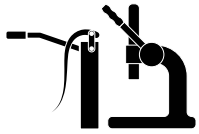


Assembling the Driven Shaft

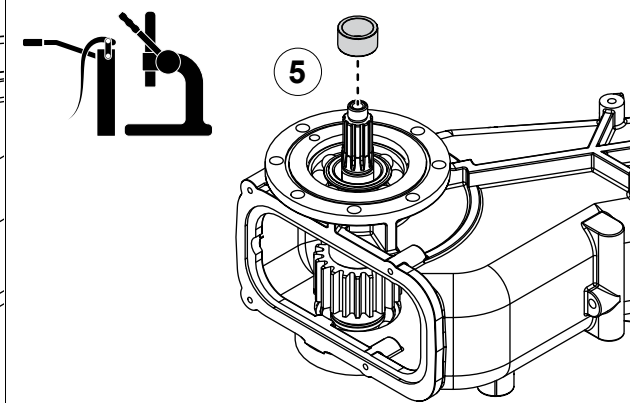
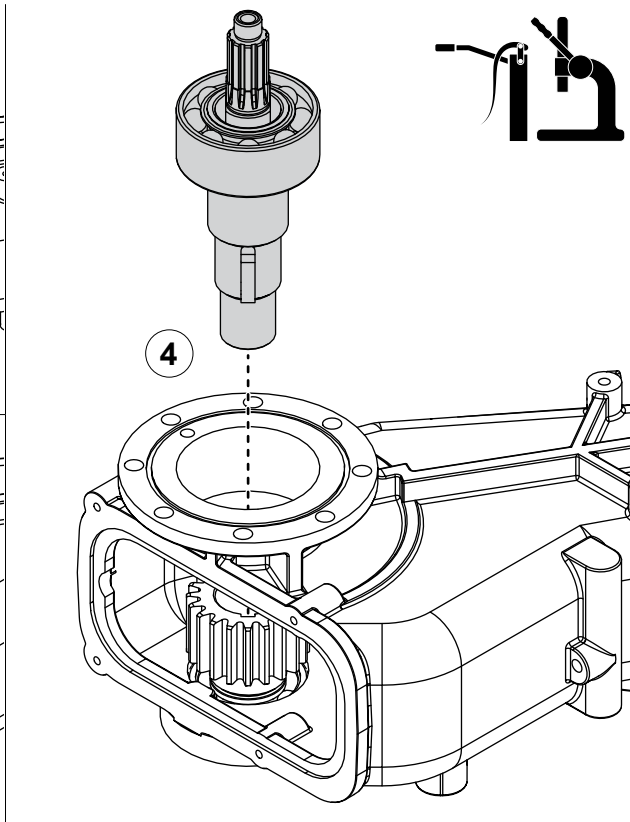
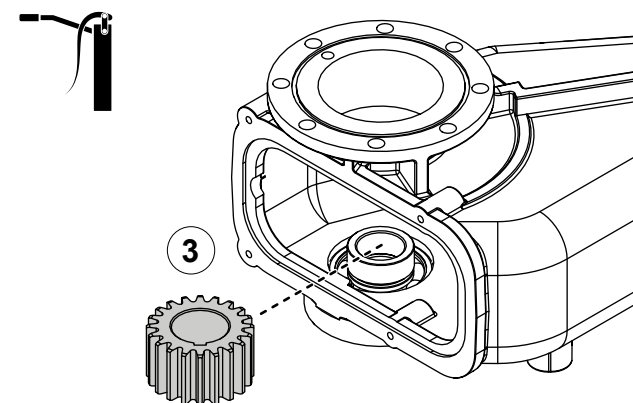
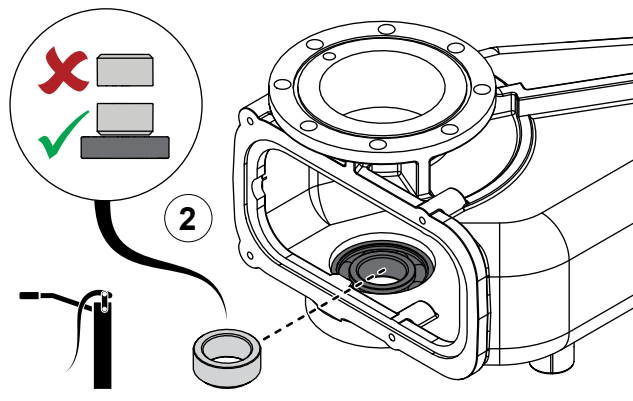
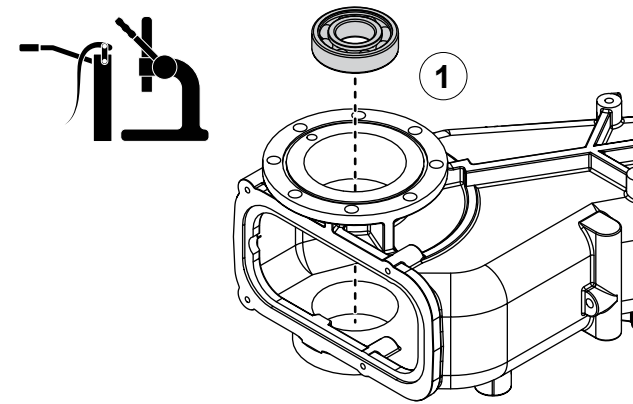


Use the illustrations and instructions to assemble the driven shaft assembly.

- 1 Apply grease to the driven shaft, then press the bearing onto the shaft.
- 2 Insert the key into the keyway.



Installing the Driven Components



Use the illustrations and instructions to install the driven shaft assembly and associated components.

1 Apply grease to the bearing, then press it into the chain case.

2 Apply grease to the inside of the spacer, then align the spacer over the bearing.

Note: Make sure that you install the spacer with the beveled edge towards the bearing.

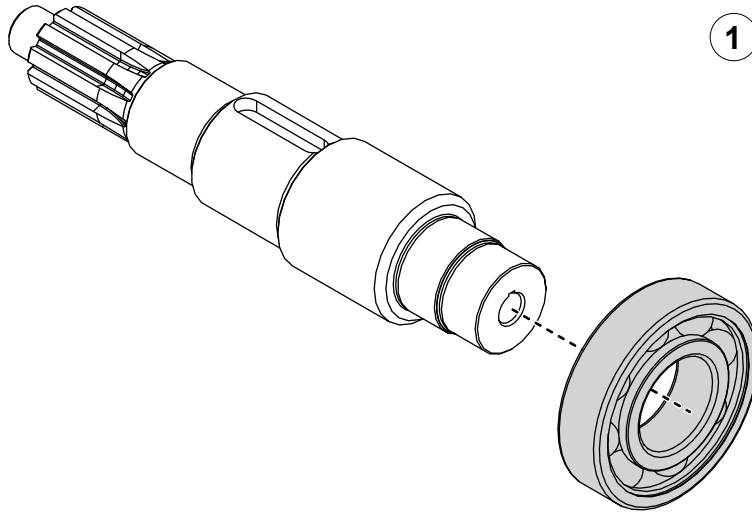
3 Apply grease to the inside of the driven sprocket, then align the sprocket over the spacer.

4 To install the driven shaft assembly, do the following:

- Apply grease to the shaft.
- Align the key on the shaft with the keyway on the driven sprocket.
- Press the driven shaft assembly through the driven sprocket, spacer, and chain case.

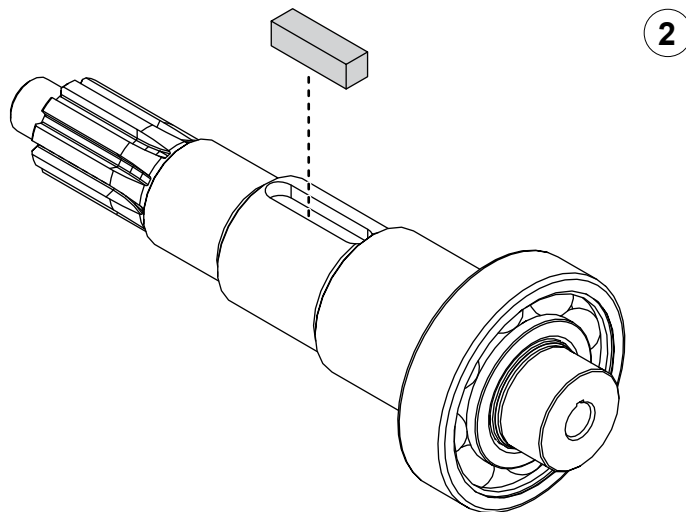
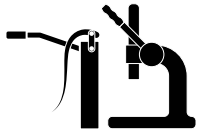
5 Apply grease to the driven shaft, then press the oil seal sleeve onto the shaft.

Assembling the Drive Shaft

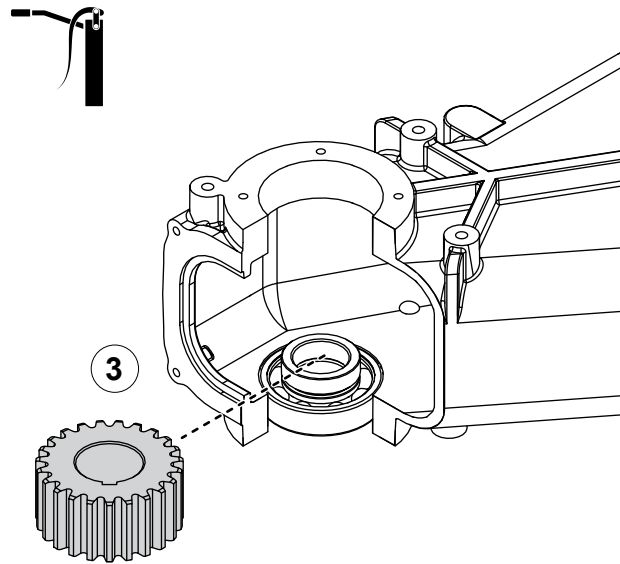
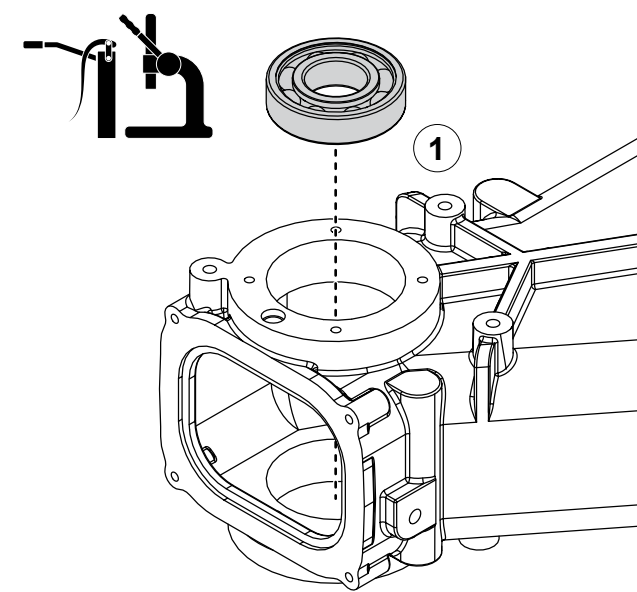


Use the illustrations and instructions to assemble the drive shaft assembly.

- 1 Apply grease to the drive shaft, then press the bearing onto the shaft.
- 2 Insert the key into the keyway.



Installing the Drive Components



Use the illustrations and instructions to install the drive shaft assembly and associated components.

1 Apply grease to the bearing, then press it into the chain case.

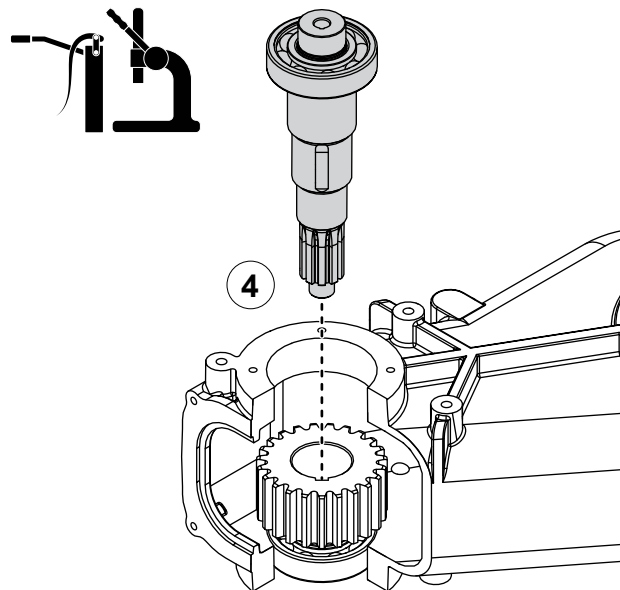
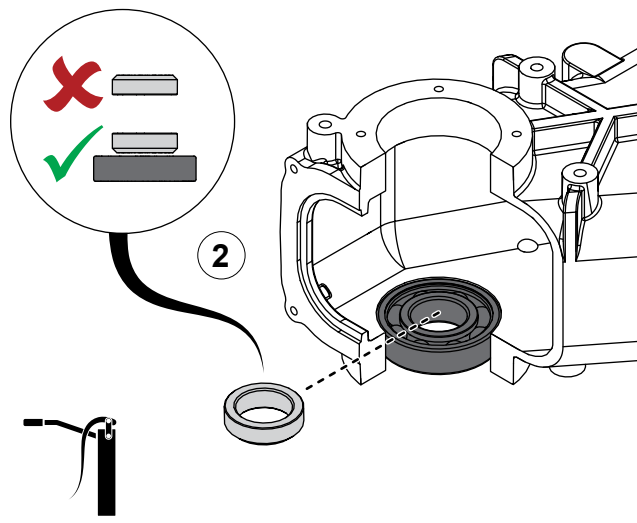
2 Apply grease to the inside of the spacer, then align the spacer over the bearing.

Note: Make sure that you install the spacer with the beveled edge towards the bearing.

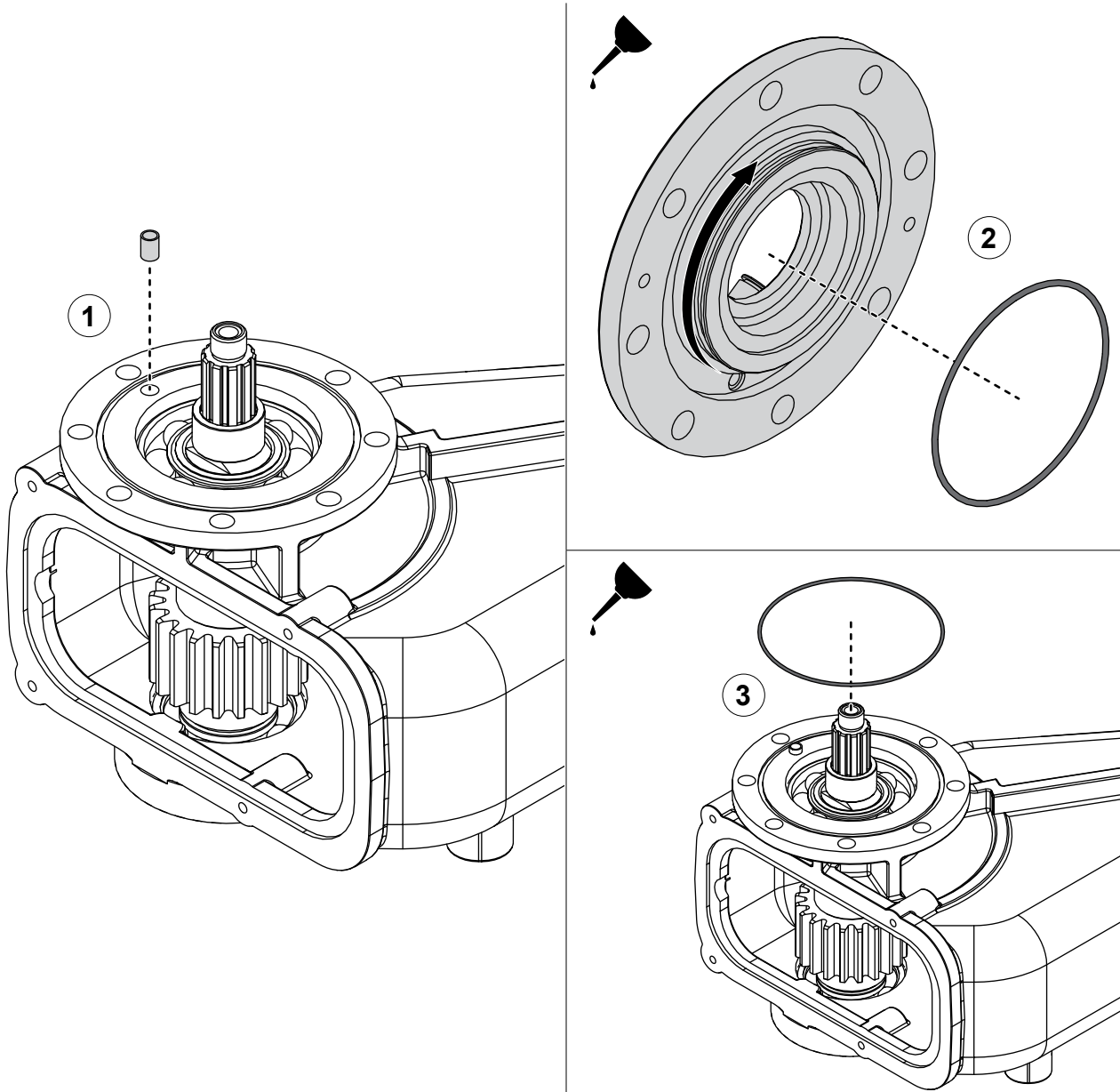
3 Apply grease to the inside of the drive sprocket, then align the sprocket over the spacer.

4 To install the drive shaft assembly, do the following:

- Apply grease to the shaft.
- Align the key on the shaft with the keyway on the drive sprocket.
- Press the drive shaft assembly through the drive sprocket, spacer, and chain case.



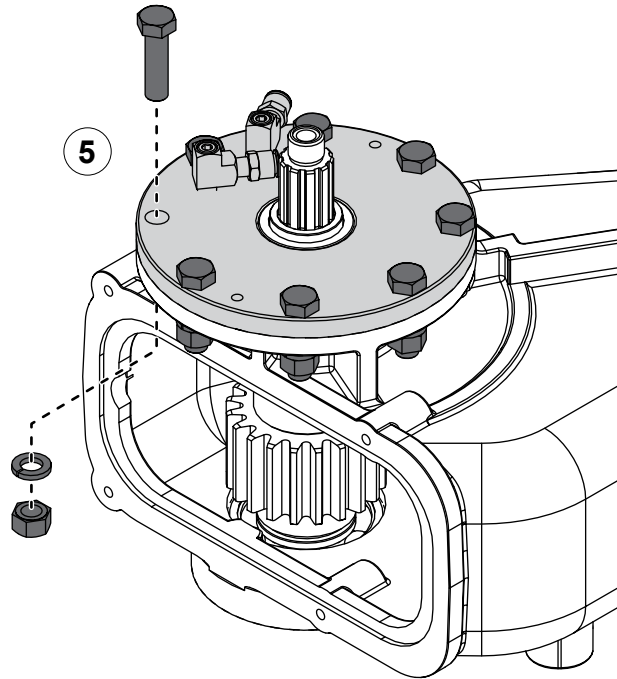
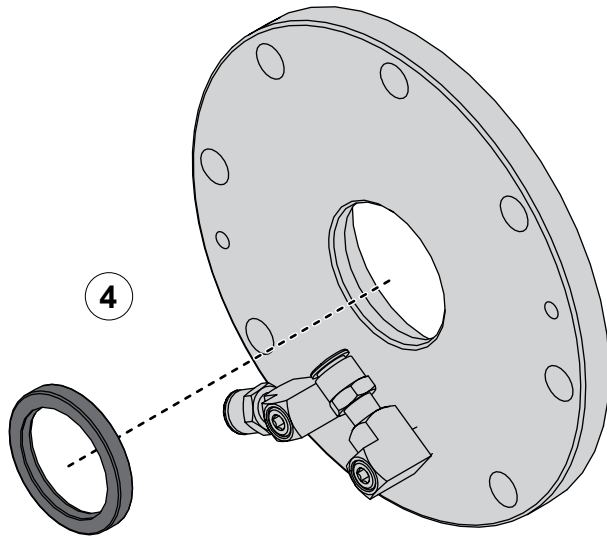
Installing the Output-Side Oil Seal Housing



Use the illustrations and instructions to install the oil seal housing on the output side of the chain case.

- 1 Insert the tube into the chain case.
- 2 Apply lubricant to the O-ring groove, then install the O-ring around the oil seal housing.
- 3 Apply lubricant to the O-ring groove, then install the O-ring into the chain case.

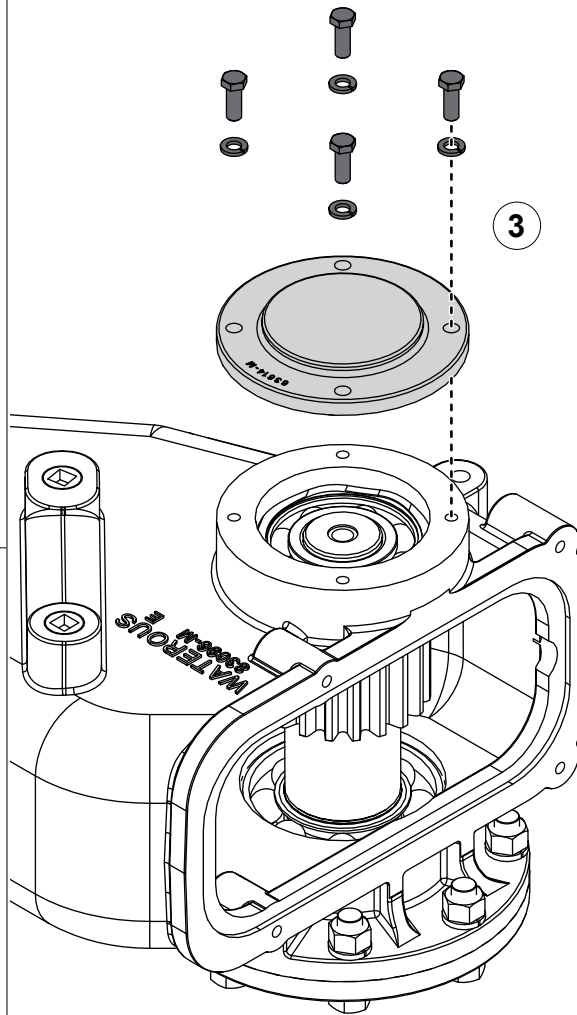
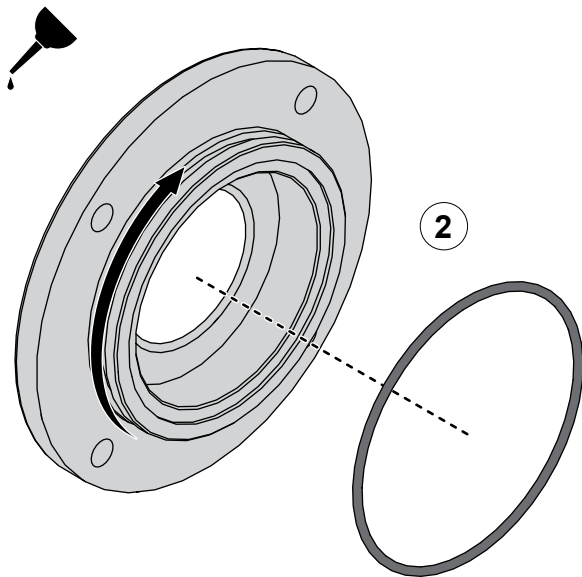
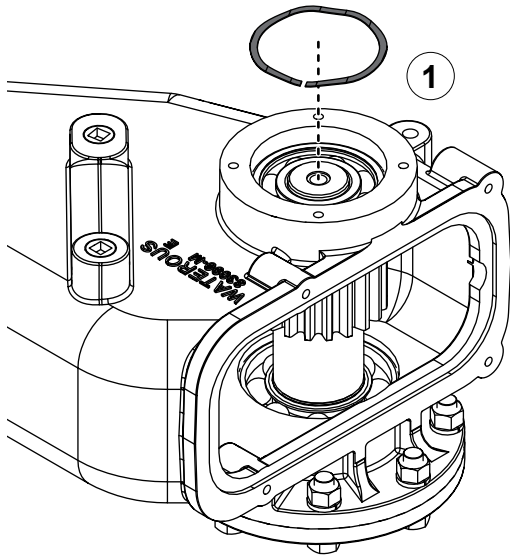
Installing the Output-Side Oil Seal Housing



Use the illustrations and instructions to install the oil seal housing on the output side of the chain case.

- 4 Apply sealant around the oil seal, then install it into the oil seal housing.
- 5 Use the hardware that you removed earlier to install the oil seal housing.

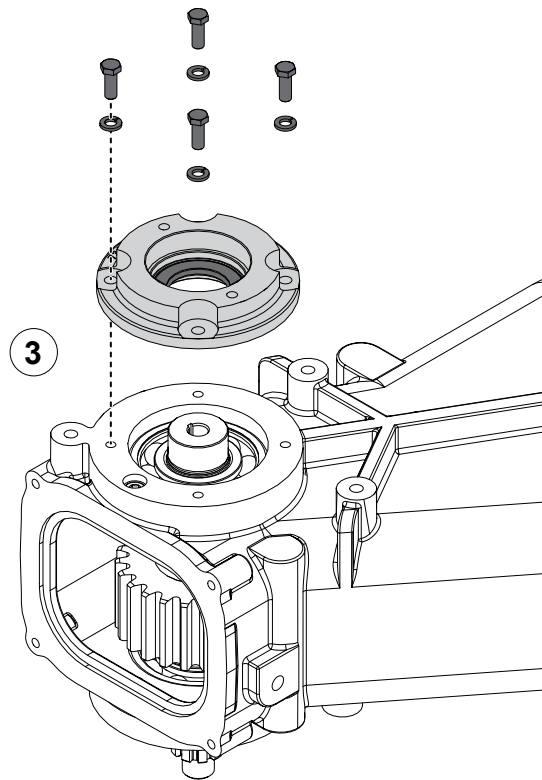
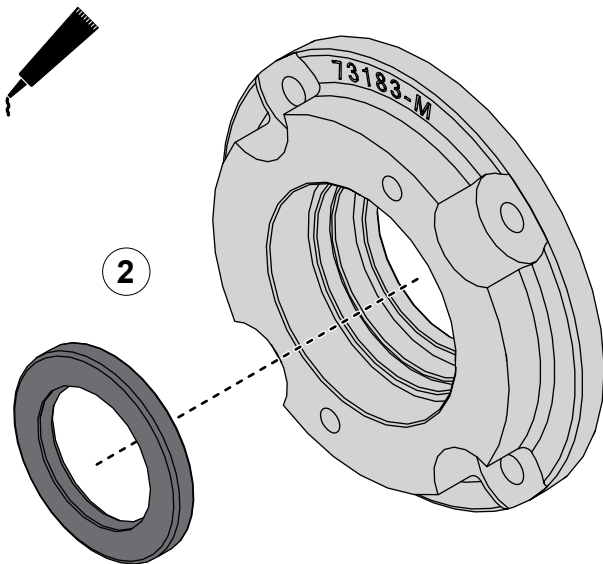
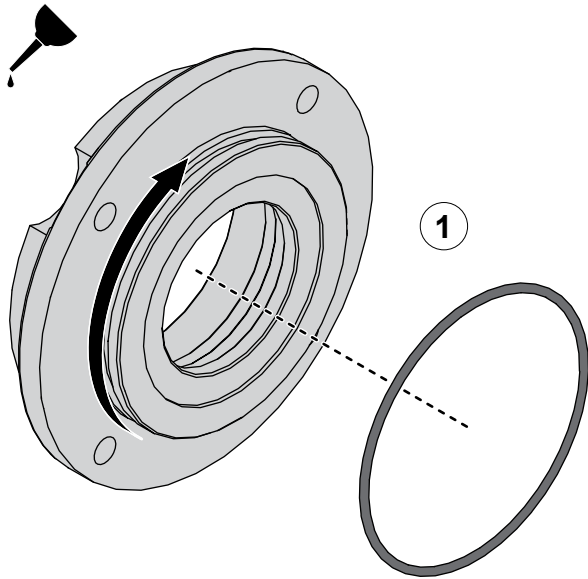
Installing the Bearing Cover



Use the illustrations and instructions to install the bearing cover on the input side of the chain case.

- 1 Install the wave spring into the chain case.
- 2 Apply lubricant to the O-ring groove, then install the O-ring around the bearing cover.
- 3 Use the hardware that you removed earlier to install the bearing cover.

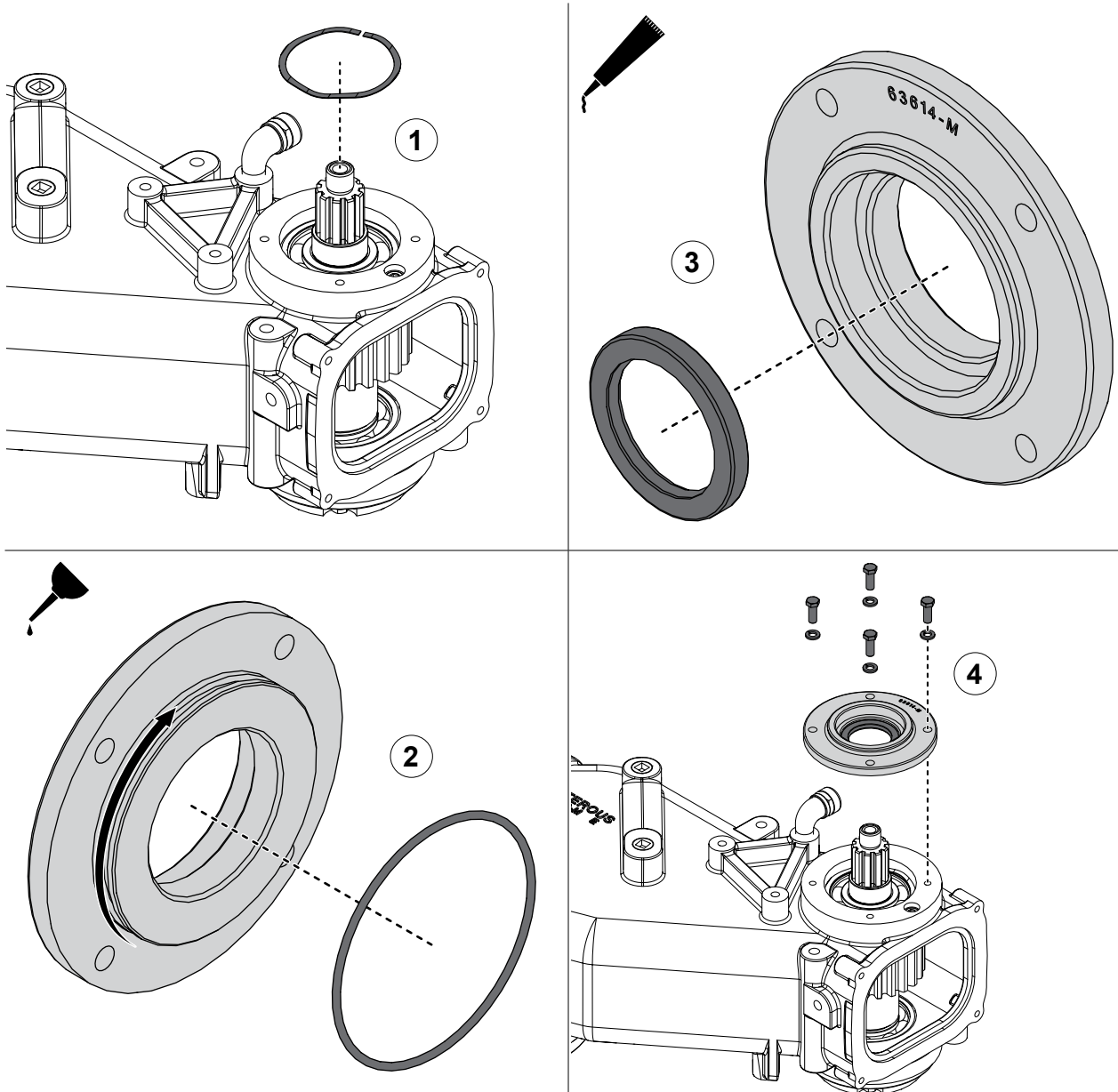
Installing the Hydraulic Pump Adapter



Use the illustrations and instructions to install the hydraulic pump adapter on the output side of the chain case.

- 1 Apply lubricant to the O-ring groove, then install the O-ring around the hydraulic pump adapter.
- 2 Apply sealant around the oil seal, then install it into the hydraulic pump adapter.
- 3 Use the hardware that you removed earlier to install the hydraulic pump adapter.

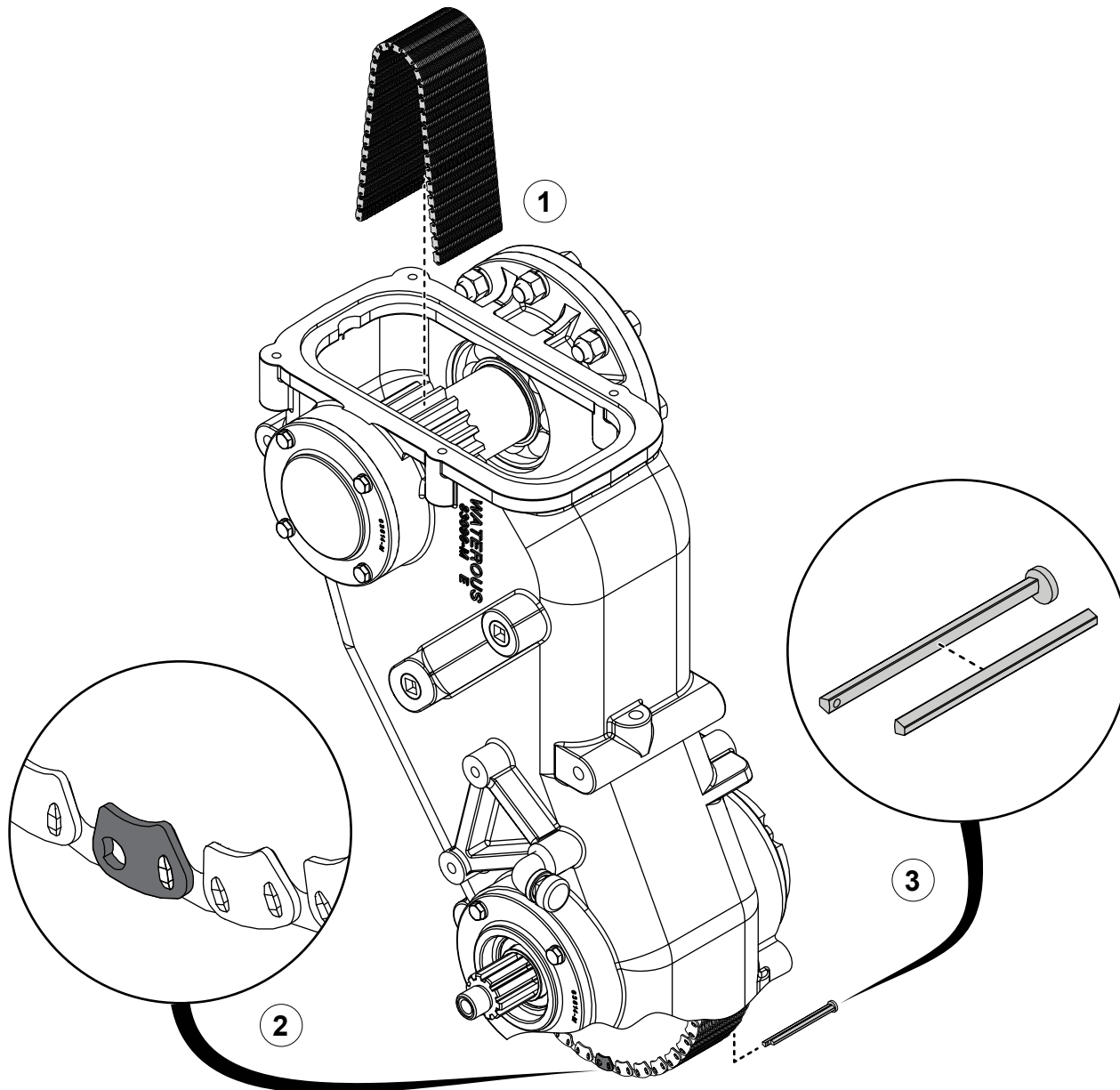
Installing the Input-Side Oil Seal Housing



Use the illustrations and instructions to install the oil seal housing on the input side of the chain case.

- 1 Install the wave spring into the chain case.
- 2 Apply lubricant to the O-ring groove, then install the O-ring around the oil seal housing.
- 3 Apply sealant around the oil seal, then install it into the oil seal housing.
- 4 Use the hardware that you removed earlier to install the oil seal housing.

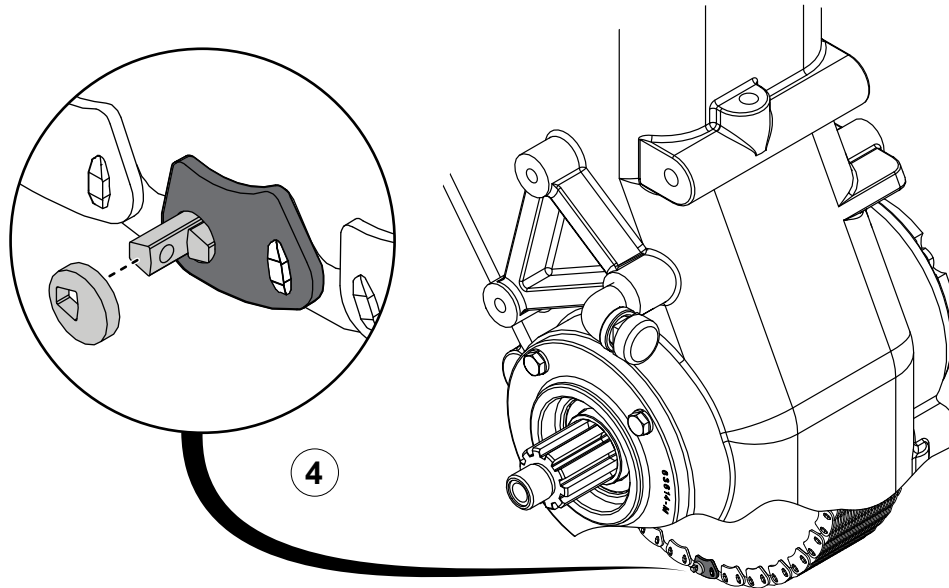
Installing the Chain



Use the illustrations and instructions to install and connect the chain.

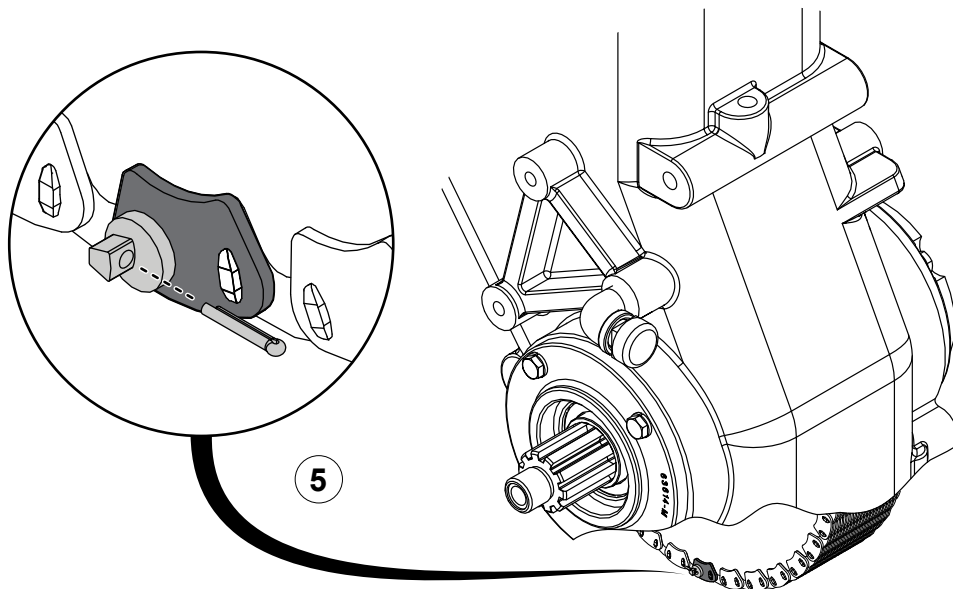
- 1 Install the chain around the driven sprocket inside the chain case.
- 2 Overlap the chain ends around the drive sprocket.
- 3 Position the axle pivot and rolling pivot together, then push them through the connecting link.

Installing the Chain

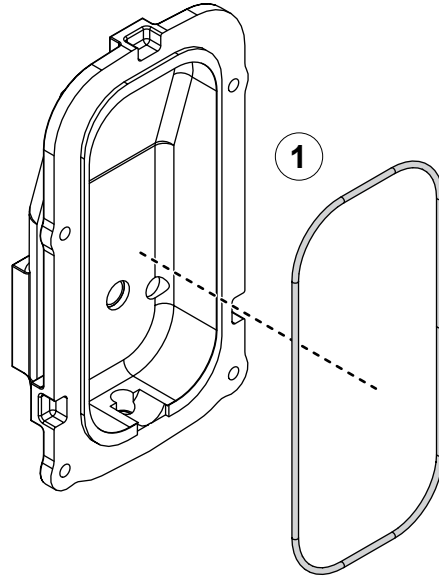


Use the illustrations and instructions to install and connect the chain.

- 4 Press the rivet disk onto the axle pivot.
- 5 Secure the connecting pin set with the cotter pin.

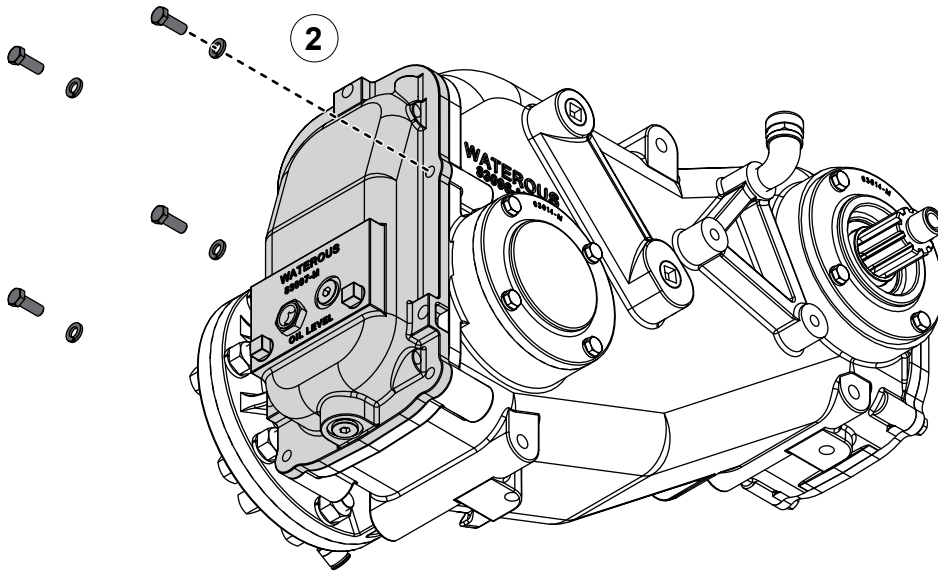


Installing the Bottom Pan

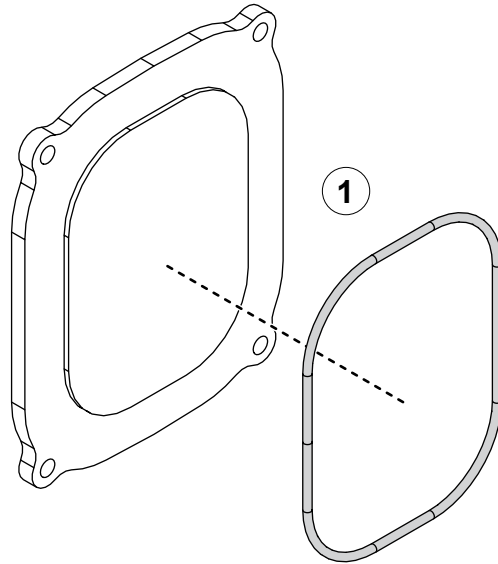


Use the illustrations and instructions to install the bottom pan.

- 1 Apply lubricant to the O-ring, then install it around the bottom pan.
- 2 Use the hardware that you removed earlier to install the bottom pan.

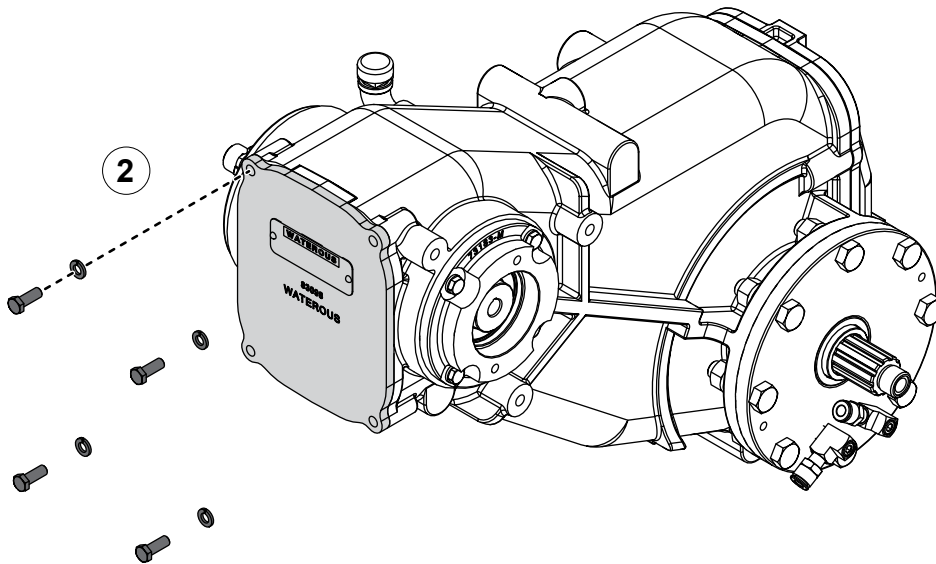


Installing the Top Cover

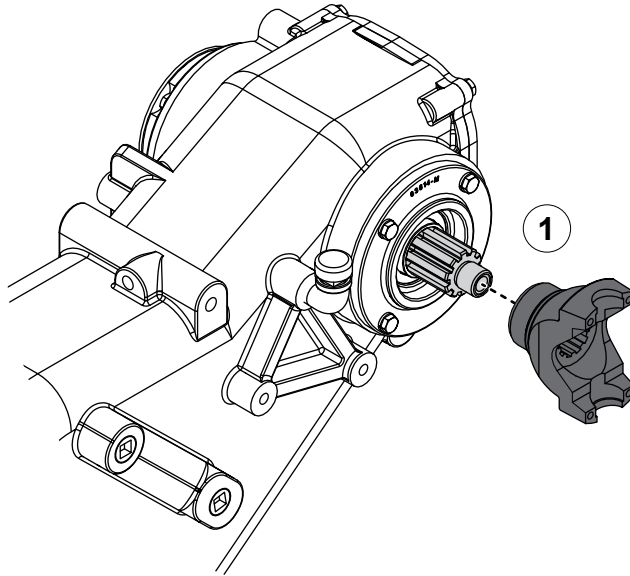


Use the illustrations and instructions to install the top cover.

- 1 Apply lubricant to the O-ring, then install it around the top cover.
- 2 Use the hardware that you removed earlier to install the top cover.



Installing the Input-Side End Yoke

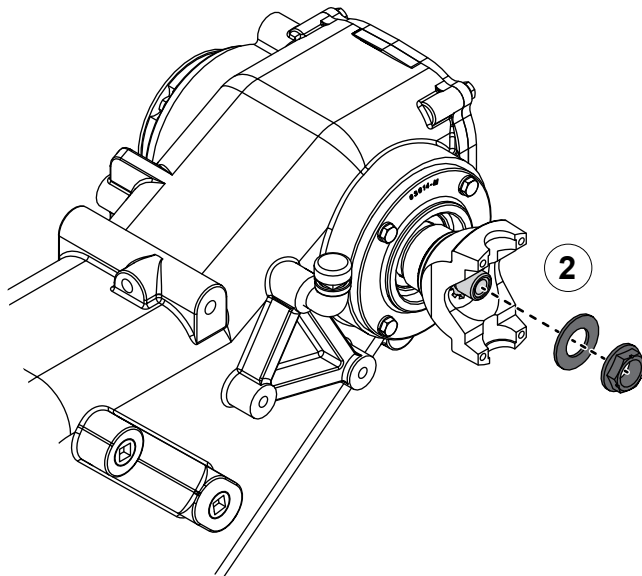


Use the illustrations and instructions to install the end yokes.

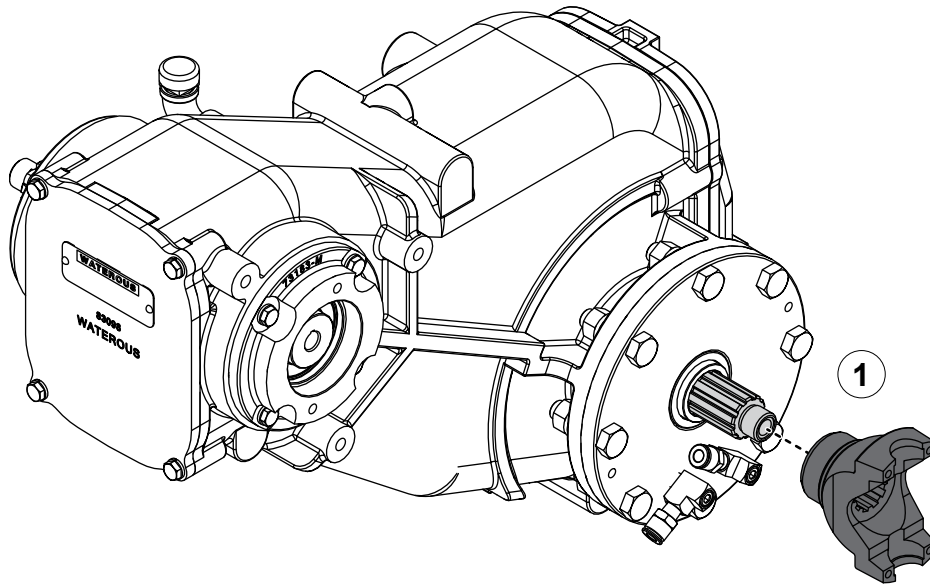
- 1 Apply grease to the drive shaft, then install the end yoke onto the shaft.
- 2 Apply anti-seize compound to the lock nut threads, then install the washer and lock nut onto the shaft.



425 ft-lb
(576 N·m)

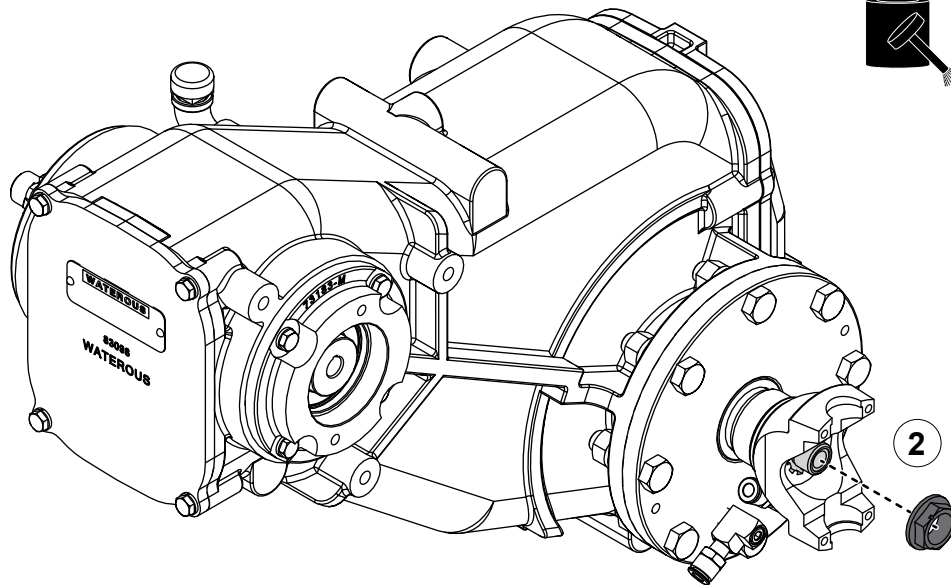


Installing the Output-Side End Yoke



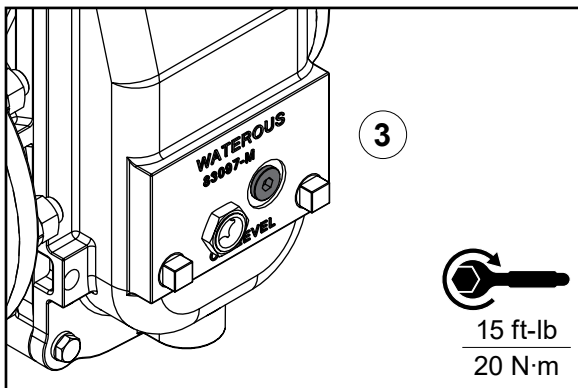
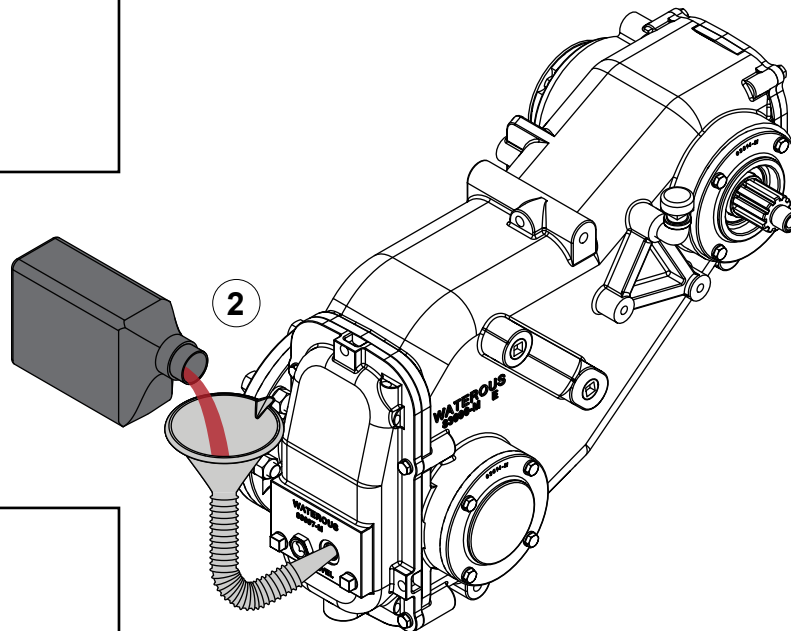
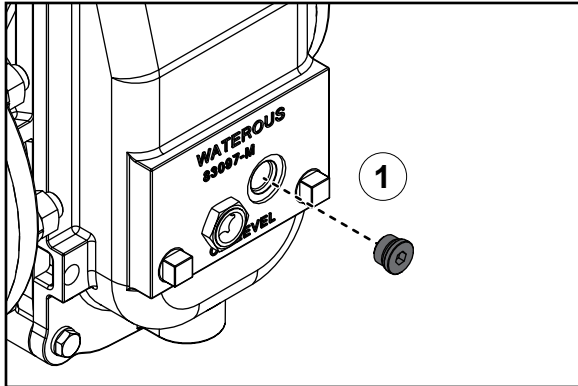
Use the illustrations and instructions to install the end yoke on the output side of the chain case.

- 1 Apply grease to the driven shaft, then install the end yoke onto the shaft.
- 2 Apply anti-seize compound to the lock nut threads, then install the lock nut onto the shaft.



425 ft-lb
(576 N·m)

Adding Lubricant to the Power Take-Off



Use the illustrations and instructions to add lubricant to the PTO. Use automatic transmission fluid (ATF) that meets the requirements of DEXRON III or MERCON V.

- 1 Remove the oil fill plug.
- 2 Add lubricant until it reaches halfway up the oil level sight plug.
Note: After pouring some oil into the case, allow it to settle before adding more to avoid over-filling.
- 3 Securely install the oil fill plug.
Note: Make sure that you do not over-tighten the oil level plug.

WATEROUS

Waterous Company
125 Hardman Avenue South
South Saint Paul, MN 55075
(651) 450-5000
www.waterousco.com