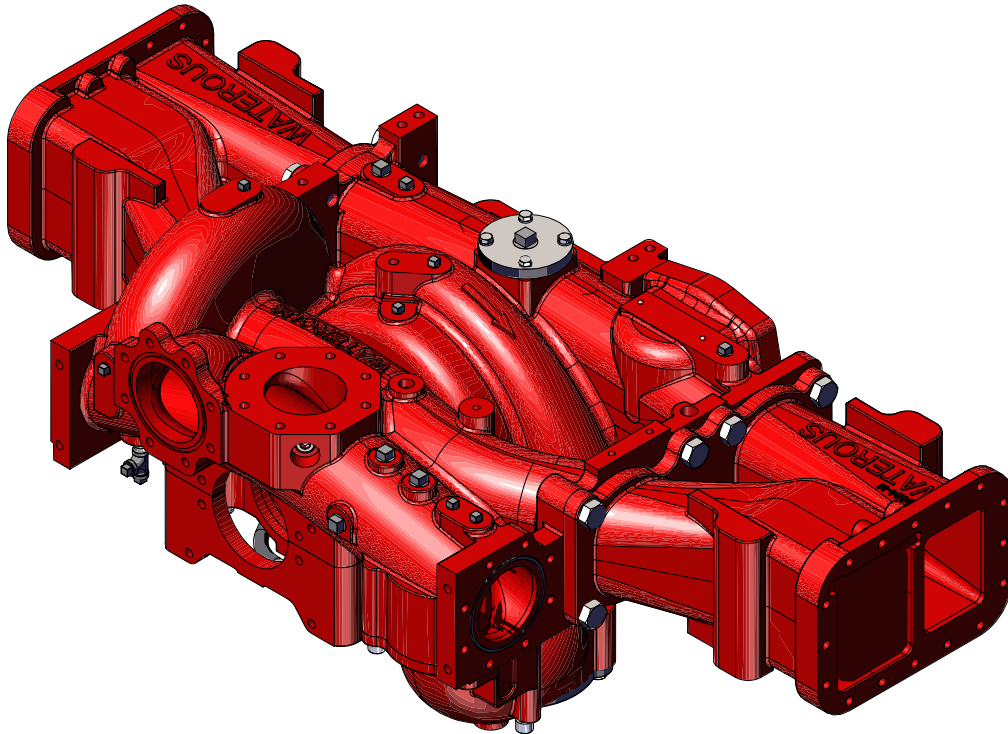


## Technical Bulletin No. 143

## Endurance CM/CMU Series Pump

Continuing our innovations and product enhancements, Waterous introduces the ENDURANCE CM/CMU Series Pump. This two-stage pump has been the choice of large and small cities across the world. This is the latest pump to be added to our ENDURANCE line of pumps, pumps that are lighter weight, have improved flow characteristics and make it easier for servicing. ENDURANCE CM/CMU pump enhancements are listed below:



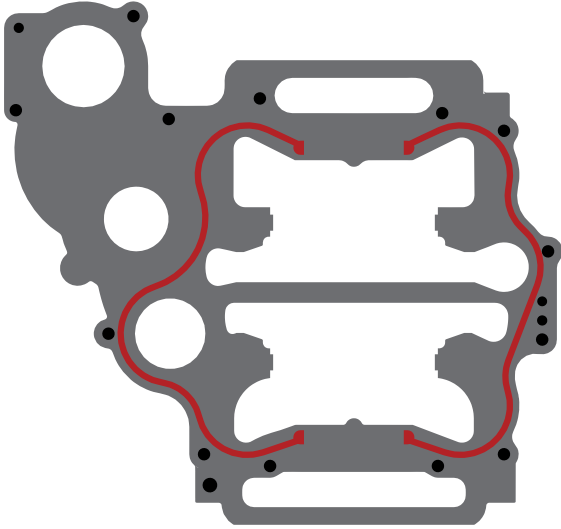
Endurance CM/CMU Series Pump

### Features and Enhancements

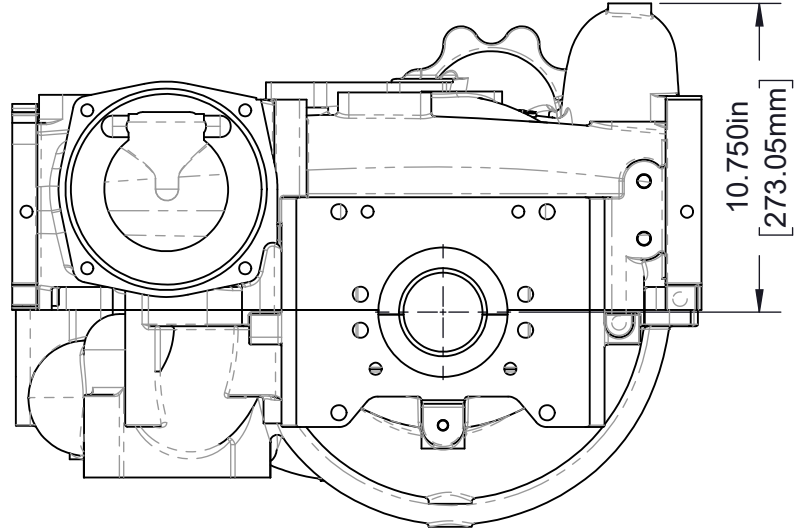
- Weight reduction of 30 lbs (13.6 kg)
- New FLOW DEFLECTORS™ add better guidance of water flow into the impellers.
- New molded gasket provides better sealing and eliminates the scraping of gasket material during maintenance.
- Added drainage on the top of the pump to prevent pooling water.
- Can be mated to the New split-shaft C22 Transmission or PTO-driven via a K or PA Transmission or Rear-Driven using the New TC22 PTO.
- Complete CFD (computer fluid dynamics) analysis proving the hydraulic design.
- Max Flow: 2250 GPM (8500 L/min)
- Max Pressure: 600 PSI (41.4 bar)

# Design Comparison

## Current Design

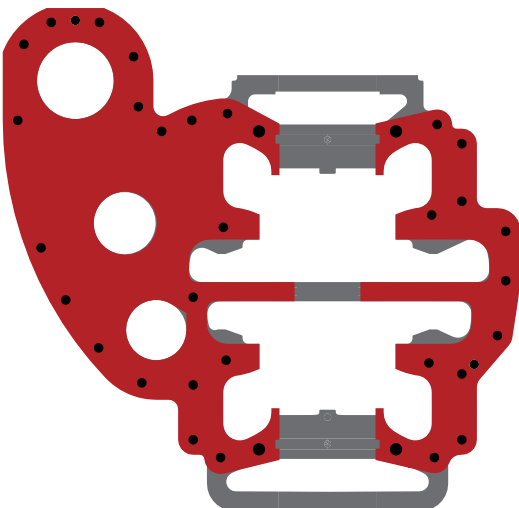


- Simplified overhaul with new molded gasket.
- Reduced assembly-hardware count.
- Improved internal fluid dynamics.

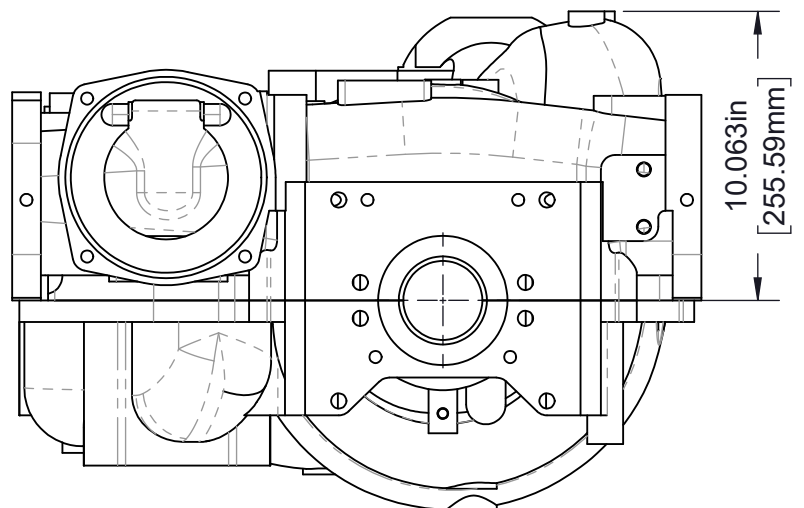


- Current pump centerline to top-of-pump measurement.
- All intake, discharge, and pump-mounting points remain at their original location.

## Previous Design



- Elimination of the paper gasket.
- Reduction of the required assembly hardware.



Previous pump centerline to top-of-pump measurement.