



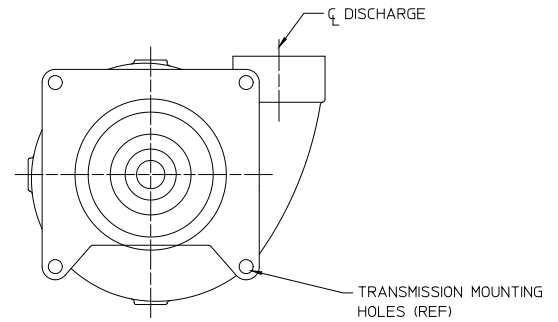
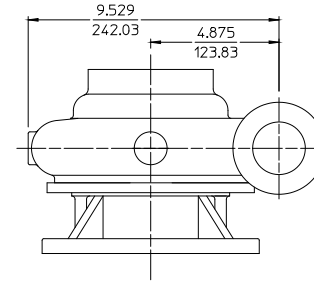
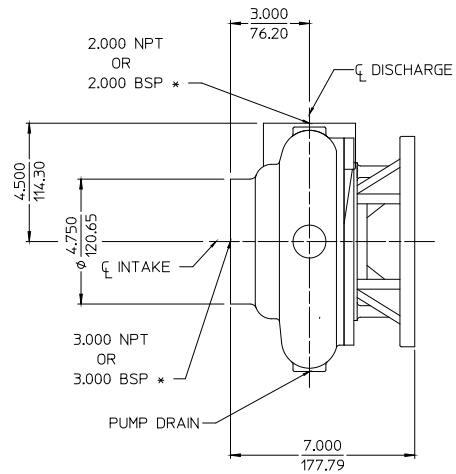
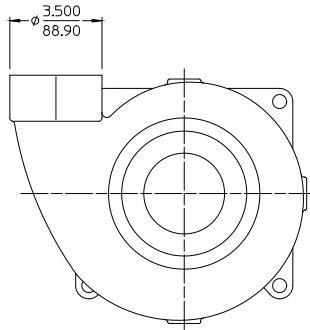
Document Number DPL80202	Issue Date 04/16/62	Rev. Date 5/13/19
------------------------------------	-------------------------------	-----------------------------

Dimensional Drawings for CP-2 Series Fire Pumps

Basic Pump			Drive		Pump Model	See Page				
Series	Intake		Transmission Model	Input Rotation <i>(1)</i>		Basic Pump Dimensions	Pump and Transmission	Pump Discharge Positions	Transmission Mounting Positions	Ordering Info.
	Type	Size								
CP-2	NPT or BSP (F)	3 in.	K Series Two Gear Increaser (No Clutch)	CW or CCW	CPK-2	2	3	5		
			T Series Two Gear Increaser, Direct Engine Mount	CW or CCW	CPK-2	2	4			

Note:

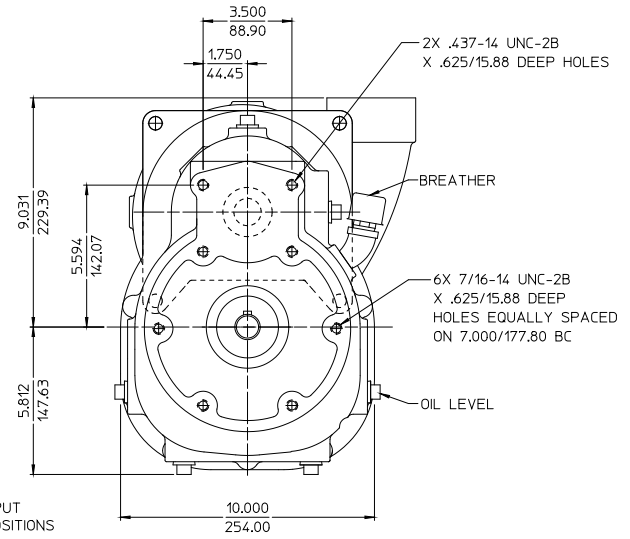
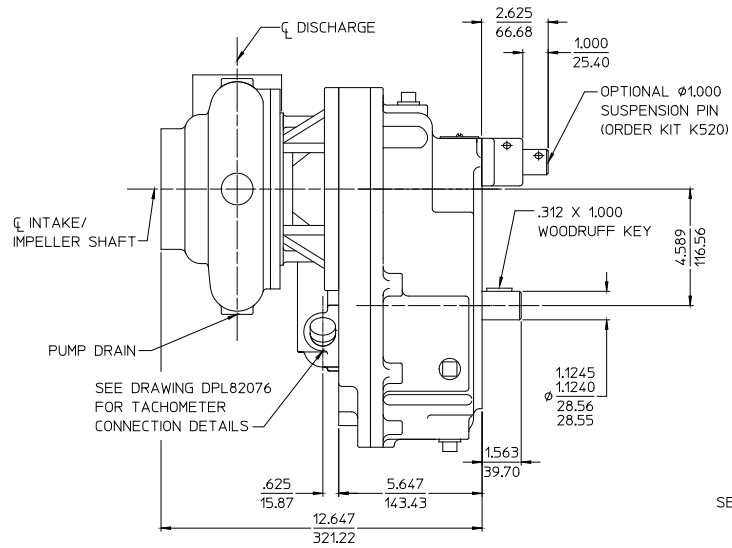
- 1) Input rotation is viewed looking directly at the transmission input shaft.



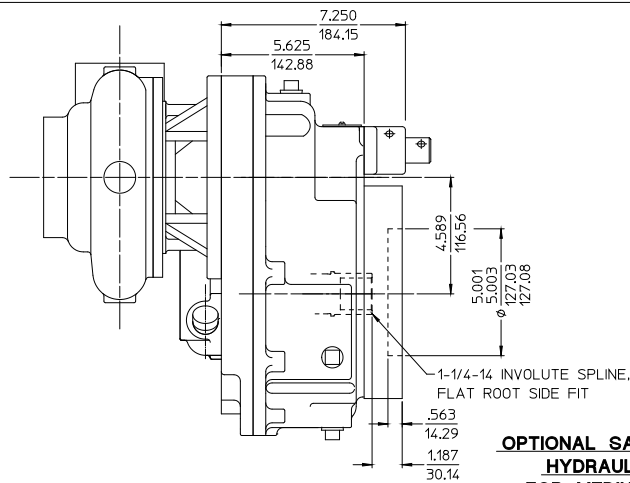
* BSP (BRITISH PIPE) THREADS ARE AVAILABLE AS STRAIGHT OR TAPERED. STRAIGHT THREADS ARE PER BS2779 FOR FITTINGS WHERE PRESSURE-TIGHT JOINTS ARE NOT MADE ON THE THREADS. TAPERED THREADS ARE PER BS21 FOR FITTINGS WHERE PRESSURE-TIGHT JOINTS ARE MADE ON THE THREADS.

MODEL CP-2
 BASIC PUMP DIMENSIONS
 CLOCKWISE DRIVE SHAFT ROTATION (INPUT) SHOWN
 SEE PAGES 2 AND 3 FOR OPTIONAL TRANSMISSIONS
 SEE PAGE 4 FOR AVAILABLE DISCHARGE POSITIONS
 (DISCHARGE FIGURE NO. 1 SHOWN)

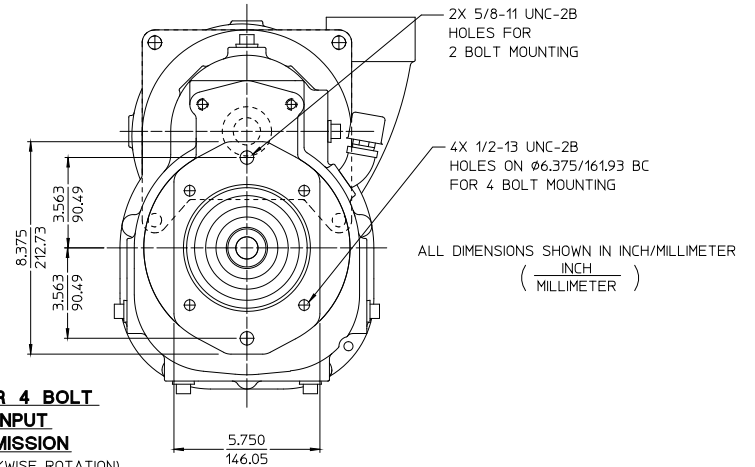
ALL DIMENSIONS SHOWN IN INCH/MILLIMETER
 ($\frac{\text{INCH}}{\text{MILLIMETER}}$)



MODEL CPK-2
 MEDIUM DUTY K TRANSMISSION
 (TWO GEAR WITHOUT CLUTCH)
 CLOCKWISE OR COUNTERCLOCKWISE INPUT
 SEE PAGE 4 FOR AVAILABLE MOUNTING POSITIONS
 (VERTICAL MOUNTING SHOWN)
 SEE PAGE 1 FOR BASIC PUMP DIMENSIONS



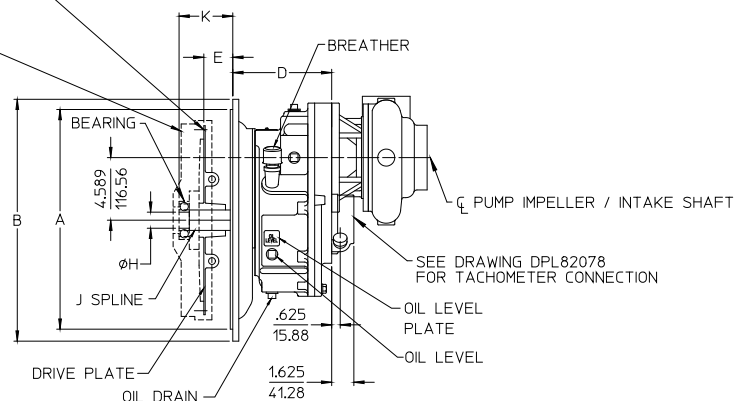
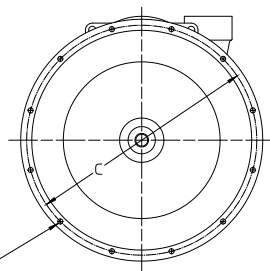
OPTIONAL SAE CLASS "C" 2 OR 4 BOLT HYDRAULIC PUMP FLANGE INPUT FOR MEDIUM DUTY K TRANSMISSION
 (AVAILABLE FOR CLOCKWISE OR COUNTERCLOCKWISE ROTATION)



(G) TAPPED HOLE SIZE IN FLYWHEEL
 (8) REQ'D FOR CLUTCH SIZES 7-1/2, 10, & 11-1/2
 USE GRADE 8 SCREWS
 (6) REQ'D FOR CLUTCH SIZES 8 & 6-1/2

FLYWHEEL FOR DRIVING-RING
 TYPE OVER CENTER CLUTCH
 PER SAE J620

(F) 3/8-16 UNC-2B
 TAPPED HOLES
 IN FLYWHEEL HOUSING,
 USE CLASS 5 SCREWS



SAE BELLHOUSING					D	SAE FLYWHEEL				DRIVE PLATE		DRIVE SHAFT	
SIZE	A	B	C	F		CLUTCH NUMBER	E	G	K	PART NUMBER	TORQUE RATING	H	J
3	16.125 409.58	17.750 450.85	16.875 428.63	12	7.250 184.15	10	2.12 53.85	3/8-16	3.940 100.08	V2272	850 FT-LB 1152.6 JOULES	φ 1.1805 1.1800	1-1/2-10 S.A.E.
4	14.250 361.95	15.875 403.23	15.000 381.00				1.56 39.62			V2461	425 FT-LB 576.3 JOULES		
3	16.125 409.58	17.750 450.85	16.875 428.63			8	2.44 61.97			V2852	N/A		
4	14.250 361.95	15.875 403.23	15.000 381.00			7-1/2	1.19 30.23			5/16-18	2.810 71.40	V4128	
5	12.375 314.32	14.000 355.60	13.125 333.38	8	6.25 158.75	6-1/2		V2865	N/A			φ 19.98 19.96	

ALL DIMENSION SHOWN IN INCH/MILLIMETER

(INCH / MILLIMETER)

ALL DIMENSIONS SHOWN IN INCH/MILLIMETER
 (INCH / MILLIMETER)

MODEL CPT-2
 MEDIUM DUTY T. TRANSMISSION
 (TWO GEAR WITHOUT CLUTCH)
 CLOCKWISE OR COUNTERCLOCKWISE INPUT
 SEE PAGE 4 FOR AVAILABLE MOUNTING POSITIONS
 (VERTICAL MOUNTING POSITION SHOWN)
 SEE PAGE 1 FOR BASIC PUMP DIMENSIONS

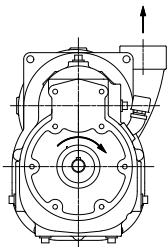


FIGURE 1

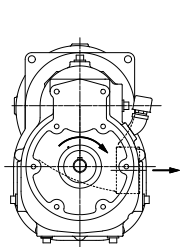


FIGURE 2

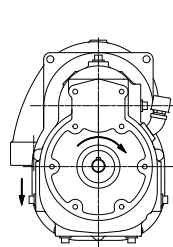


FIGURE 3

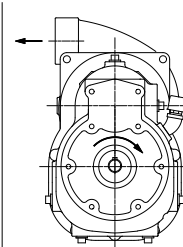


FIGURE 4

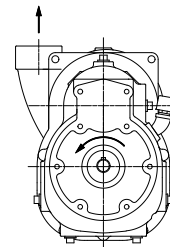


FIGURE 5

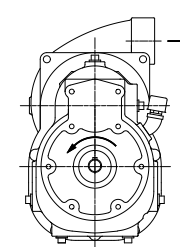


FIGURE 6

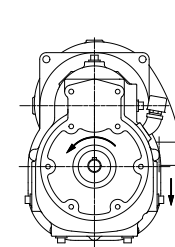


FIGURE 7

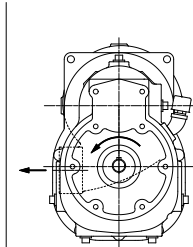
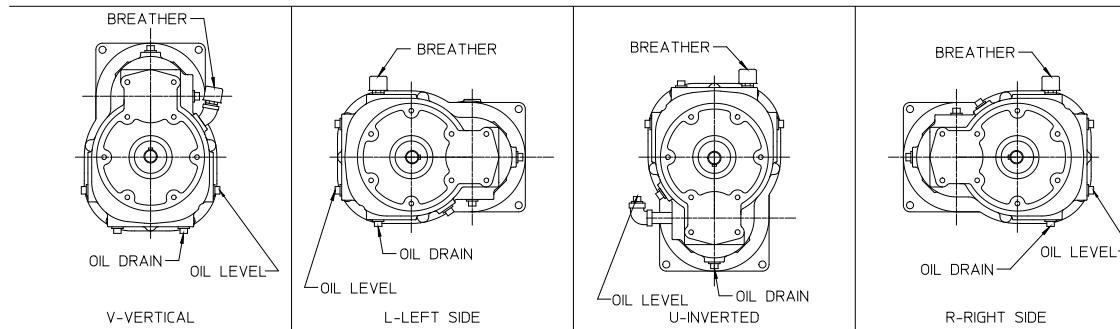


FIGURE 8

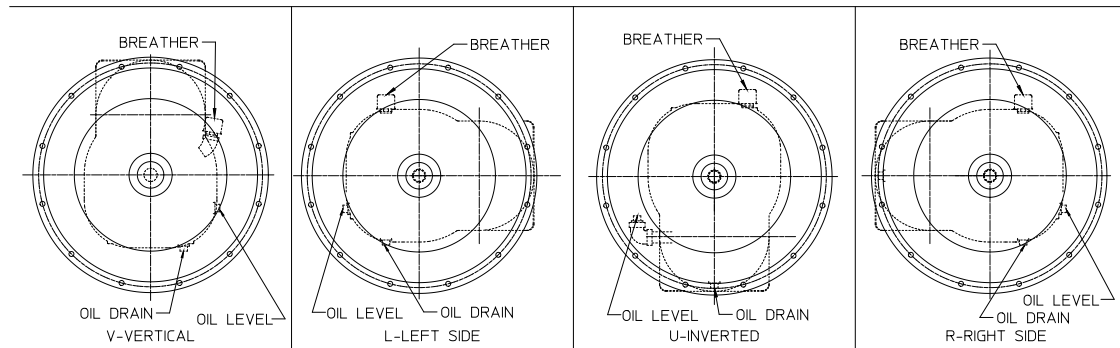
CLOCKWISE DRIVE SHAFT ROTATION (INPUT)
(VIEWED LOOKING AT TRANSMISSION INPUT SHAFT)

COUNTERCLOCKWISE DRIVE SHAFT ROTATION (INPUT)
(VIEWED LOOKING AT TRANSMISSION INPUT SHAFT)

AVAILABLE DISCHARGE POSITIONS



MEDIUM DUTY K



MEDIUM DUTY T

AVAILABLE TRANSMISSION MOUNTING POSITIONS
(MOUNTING POSITIONS APPLY TO BOTH CW AND CCW INPUT ROTATIONS)

ORDERING INFORMATION:

WHEN ORDERING SUPPLY THE FOLLOWING
1. COMPLETE PUMP / TRANSMISSION MODEL:

- CPK2
- CPT2

2. BASIC ASSEMBLY NUMBER 80202.

3. SUFFIX LETTERS WHICH INDICATE TRANSMISSION MOUNTING POSITION AND DISCHARGE POSITION.

80202 - V 1

DISCHARGE POSITION (ALSO INDICATES INPUT ROTATION).
1, 2, 3, 4 CLOCKWISE INPUT — SEE TABLE ABOVE
5, 6, 7, 8 COUNTERCLOCKWISE INPUT

TRANSMISSION MOUNTING —
V-VERTICAL
L-LEFT SIDE
U-INVERTED
R-RIGHT SIDE — SEE TABLE AT LEFT

BASIC ASSEMBLY NUMBER