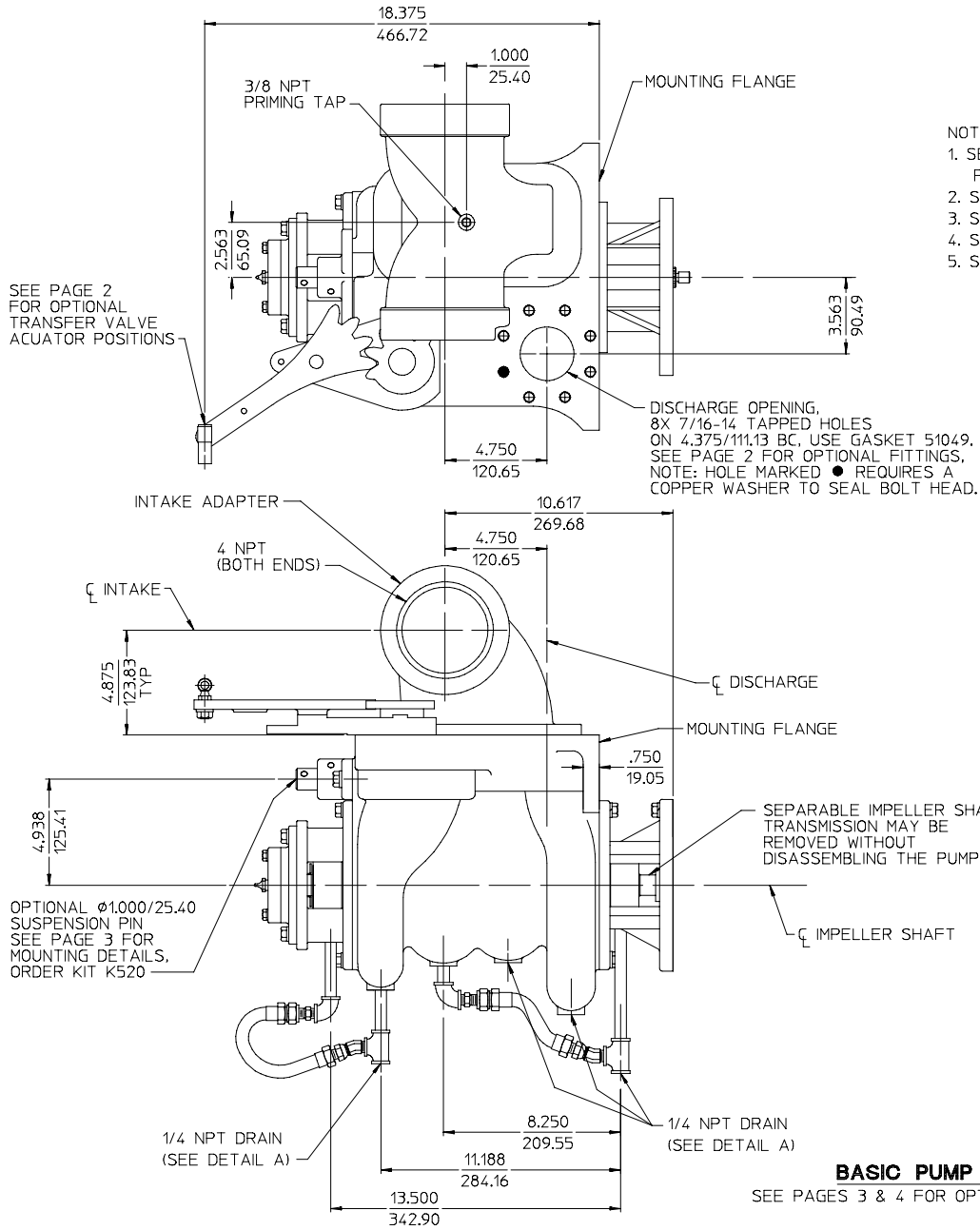


Dimensional Drawing for CP-3 Series Fire Pumps

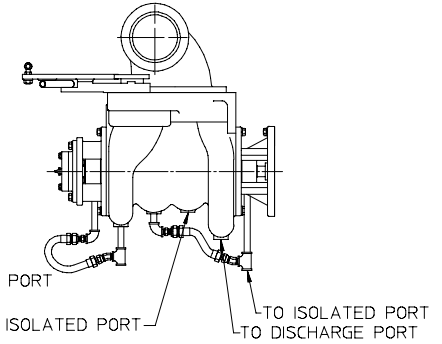
Index

Item	See Page
Basic Pump Dimensions	1
Transfer Valve Actuator	2
Optional Discharge Fittings	
Model CPK-3 (With Medium Duty K Transmission)	3
Model CPT-3 (With Medium Duty T Transmission)	4
Available Input Rotations	5
Available Transmission Mounting Positions	
Ordering Information	

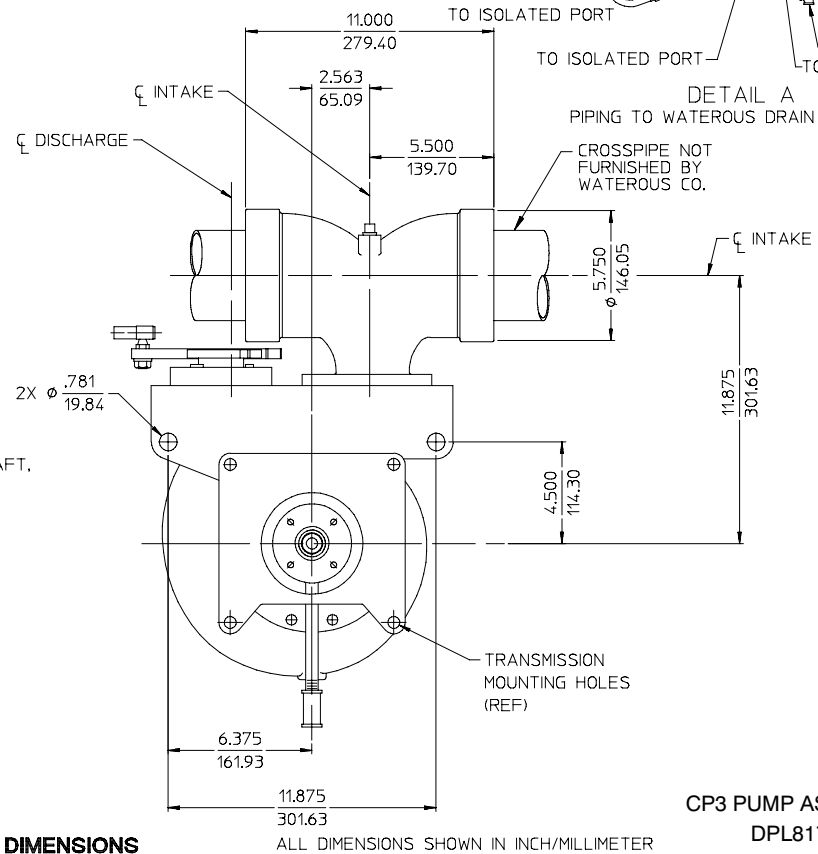


NOTES:

1. SEE PAGE 2 FOR TRANSFER VALVE ACTUATOR, PANEL PLATE AND OPTIONAL DISCHARGE CONFIGURATIONS.
2. SEE PAGE 3 FOR MODEL (PK-3 (K TRANSMISSION))
3. SEE PAGE 4 FOR MODEL (PT-3 (T TRANSMISSION))
4. SEE PAGE 5 FOR TRANSMISSION MOUNTING POSITIONS.
5. SEE DPL80438 FOR TACHOMETER DETAILS.



DETAIL A
PIPING TO WATEROUS DRAIN VALVE



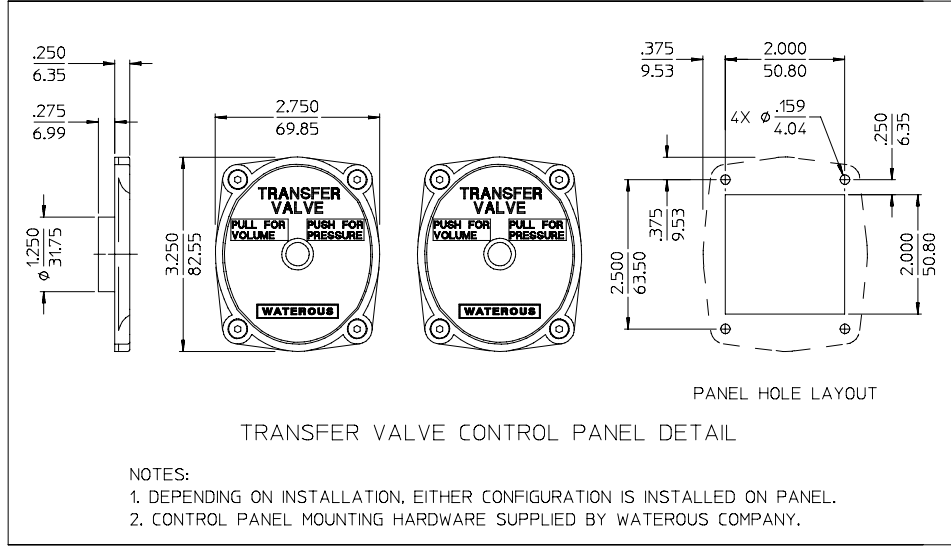
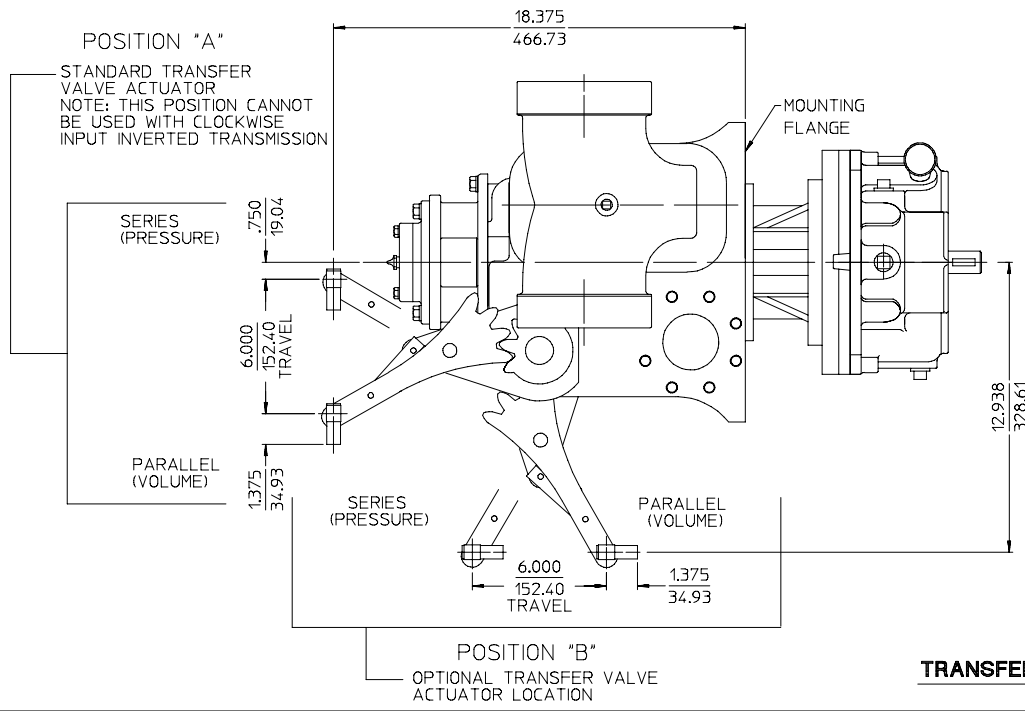
BASIC PUMP DIMENSIONS

SEE PAGES 3 & 4 FOR OPTIONAL TRANSMISSIONS

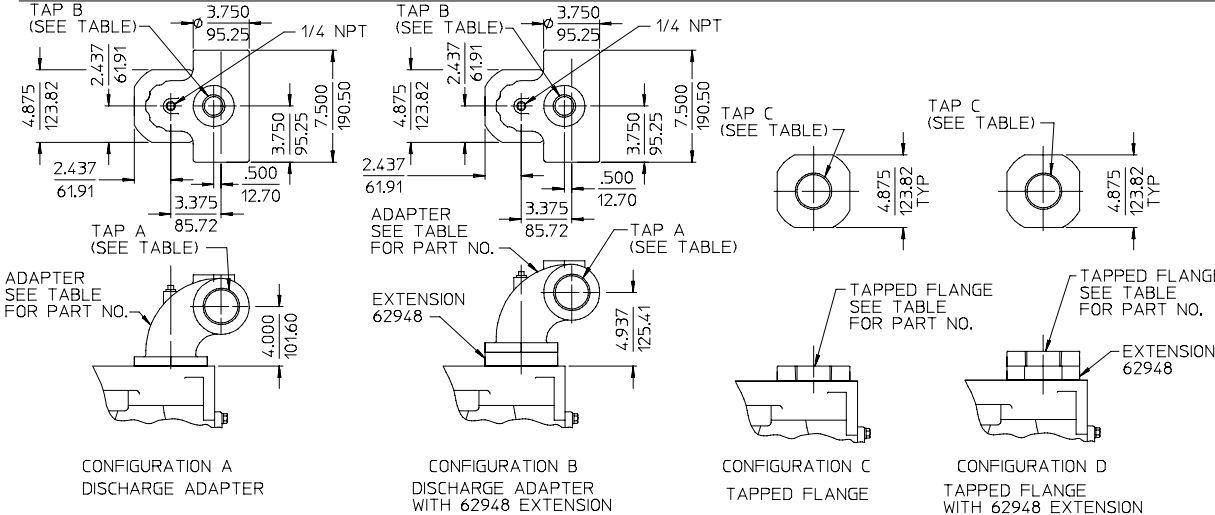
(INCH / MILLIMETER)

CP3 PUMP ASSEMBLY
DPL81756

WATEROUS COMPANY
SOUTH ST. PAUL, MN 55075



TRANSFER VALVE ACTUATOR DETAILS

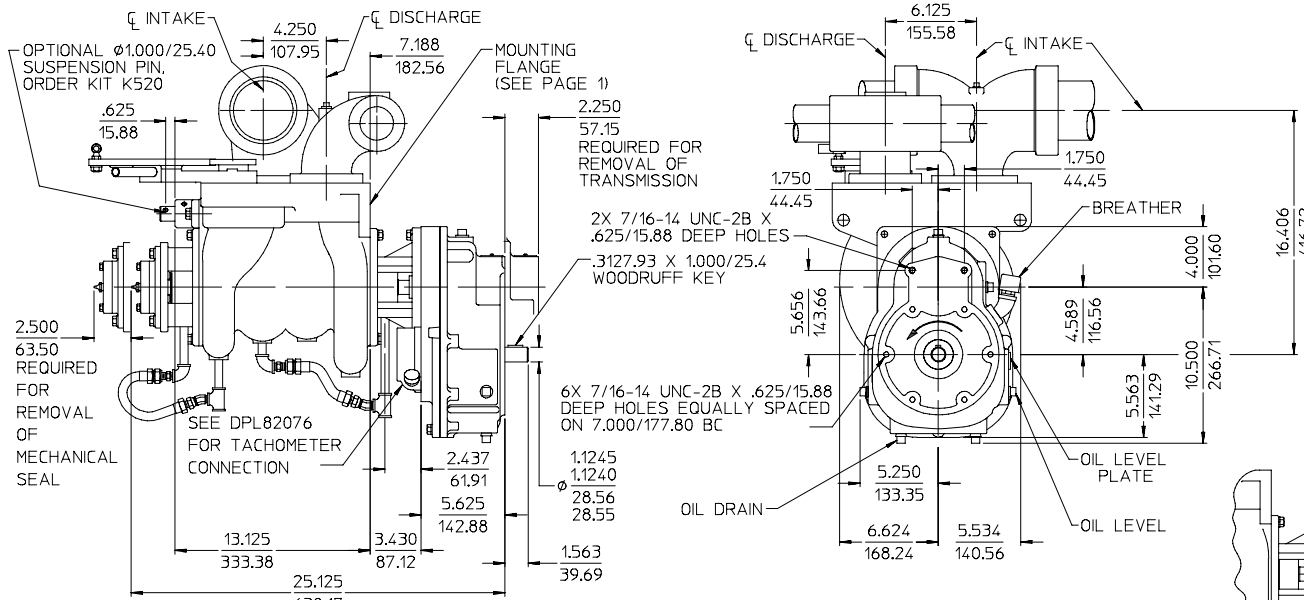


DISCHARGE CONFIGURATION	TAP A	TAP B	TAP C	ORDER FITTING		
				ADAPTER	TAPPED FLANGE	EXTENSION
A (ADAPTER)	2 IN. NPT	—	—	70615	—	—
	2-1/2 IN. NPT	—	—	70615-1	—	—
	2 IN. NPT	1-1/2 IN. NPT	—	70615-2	—	—
	2-1/2 IN. NPT	1-1/2 IN. NPT	—	70615-3	—	—
B (ADAPTER WITH EXTENSION)	2 IN. NPT	—	—	70615	—	62948
	2-1/2 IN. NPT	—	—	70615-1	—	62948
	2 IN. NPT	1-1/2 IN. NPT	—	70615-2	—	62948
	2-1/2 IN. NPT	1-1/2 IN. NPT	—	70615-3	—	62948
C TAPPED FLANGE	—	—	2 IN. NPT	—	61293	—
	—	—	2-1/2 IN. NPT	—	61293-1	—
D TAPPED FLANGE WITH EXTENSION	—	—	2 IN. NPT	—	61293	62948
	—	—	2-1/2 IN. NPT	—	61293-1	62948
BLANK CUSTOMER TO FURNISH FITTING	—	—	—	—	—	—

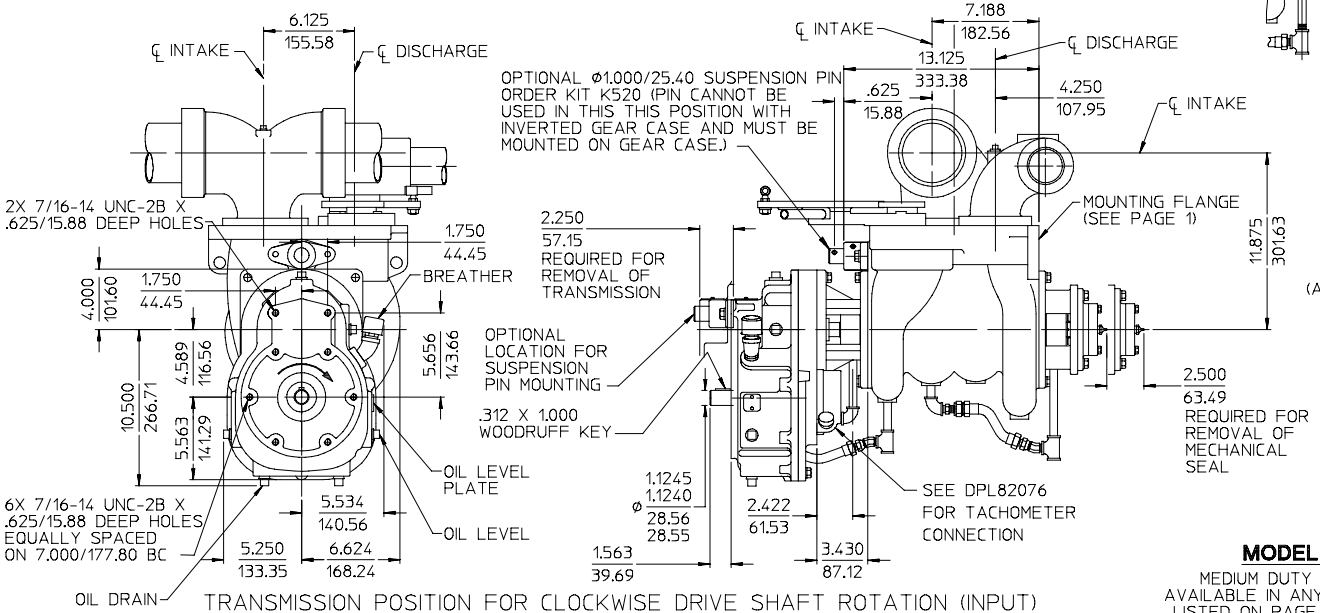
OPTIONAL DISCHARGE FITTINGS
SPECIFY FITTING PART NO.'S REQUIRED FROM TABLE,
OR DISCHARGE MAY BE ORDERED BLANK IF CUSTOMER FURNISHES THE FITTING.

ALL DIMENSIONS SHOWN IN INCH/MILLIMETER
($\frac{\quad}{\quad}$ INCH / MILLIMETER)

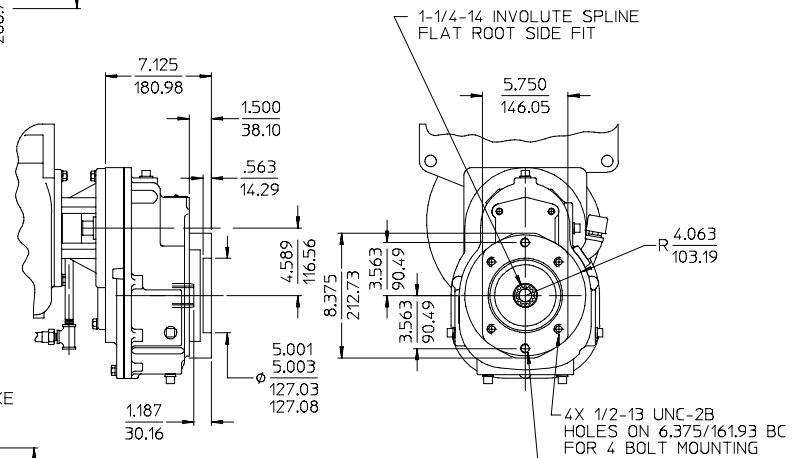
CP3 PUMP ASSEMBLY
DPL81756
WATEROUS COMPANY
SOUTH ST. PAUL, MN 55075
REL: 1/96 PAGE 2 OF 5 REV: 04/17/08



TRANSMISSION POSITION FOR COUNTERCLOCKWISE DRIVE SHAFT ROTATION (INPUT)



TRANSMISSION POSITION FOR CLOCKWISE DRIVE SHAFT ROTATION (INPUT)

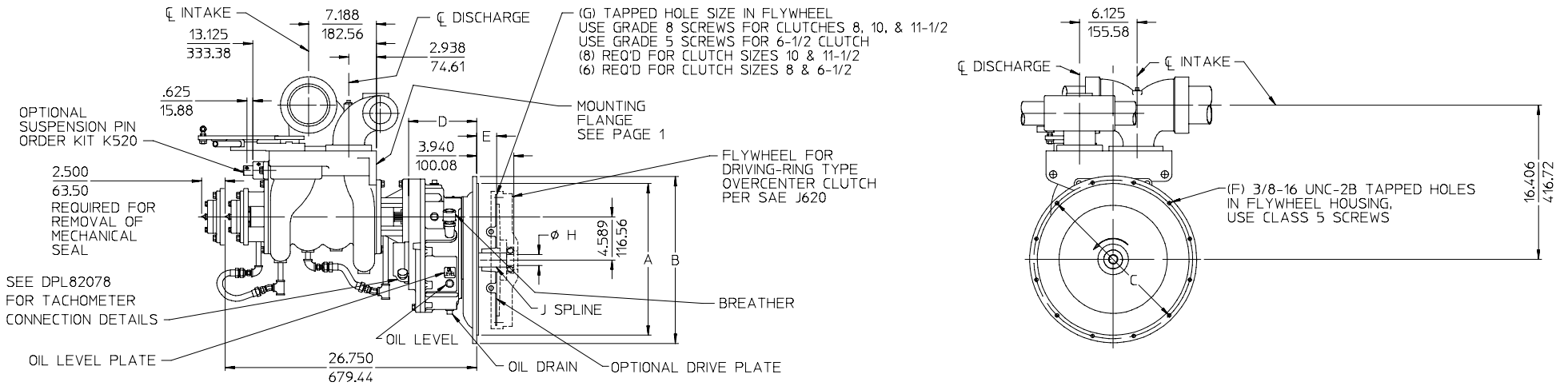


OPTIONAL
SAE CLASS "C" 2 OR 4 BOLT
HYDRAULIC MOTOR FLANGE
(AVAILABLE FOR CLOCKWISE OR COUNTERCLOCKWISE ROTATION)

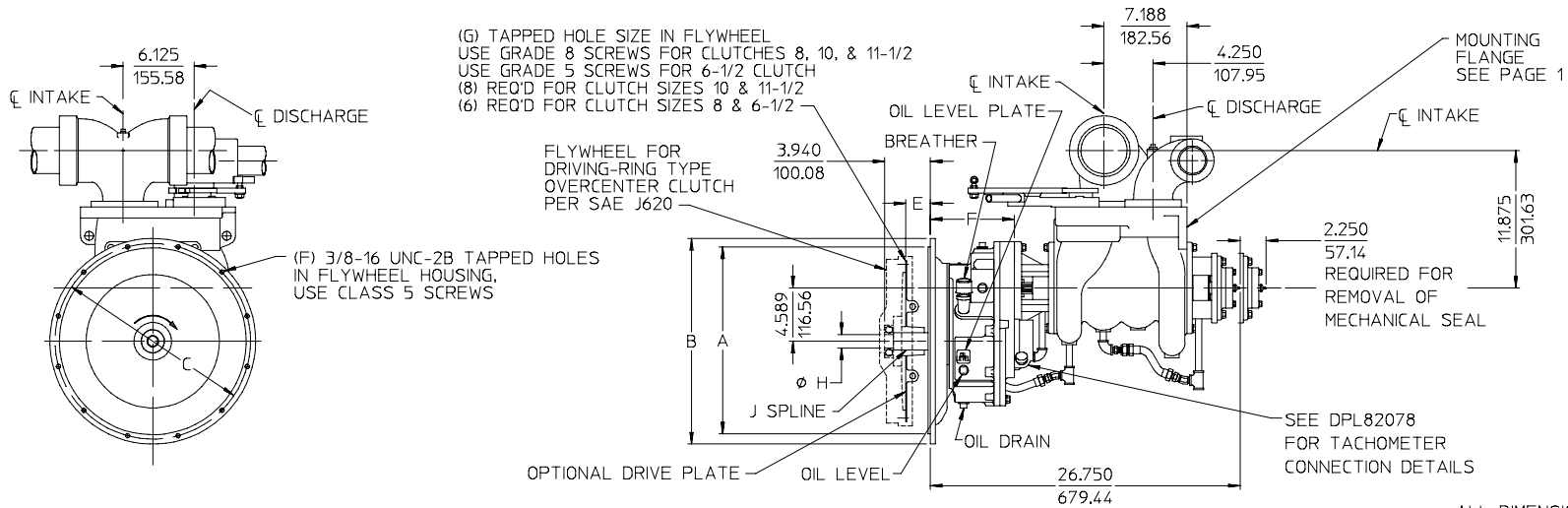
ALL DIMENSION SHOWN IN INCH/MILLIMETER
(INCH)
(MILLIMETER)

MODEL CPK-3
MEDIUM DUTY K TRANSMISSION
AVAILABLE IN ANY MOUNTING POSITION
LISTED ON PAGE 5 (VERTICAL SHOWN)
SEE PAGE 1 FOR BASIC PUMP DIMENSIONS

CP3 PUMP ASSEMBLY
DPL81756
WATEROUS COMPANY
SOUTH ST. PAUL, MN 55075
REL: 01/96 PAGE 3 OF 5 REV: 04/17/08



TRANSMISSION POSITION FOR COUNTERCLOCKWISE DRIVE SHAFT ROTATION



TRANSMISSION POSITION FOR CLOCKWISE DRIVE SHAFT ROTATION

ALL DIMENSION SHOWN IN INCH/MILLIMETER
 (INCH)
 (MILLIMETER)

SAE BELLHOUSING					D	SAE FLYWHEEL			OPTIONAL DRIVE PLATE		DRIVE SHAFT	
SIZE	A	B	C	F		CLUTCH NO.	E	G	PART NO.	TORQUE RATING	H	J
3	16.125	17.750	16.875		7.250 184.15	10	2.12	53.85	V 2272	850 FT-LB	1.1805/18000 29.98/29.97	1-1/2-10 S.A.E.
	409.58	450.85	428.63									
	14.250	15.875	15.000									
4	36.195	403.23	381.00			11-1/2	1.56	39.62	V 2461	425 FT-LB		
	16.125	17.750	16.875									
	409.58	450.85	428.63									
3	14.250	15.875	15.000		6-1/2	8	2.44	61.97	V 2852	N/A		
	36.195	403.23	381.00									
	12.375	14.000	13.125									
5	314.33	355.60	333.38		6.250 158.75	6-1/2	1.19	30.23	V 2865	N/A	.7868/7858 19.98/19.96	1-15T INVOLUTE

MODEL CPT-3
 MEDIUM DUTY T TRANSMISSION
 SEE PAGE 5 FOR AVAILABLE MOUNTING POSITIONS
 (VERTICAL MOUNTING POSITION SHOWN)
 SEE PAGE 1 FOR BASIC PUMP DIMENSIONS

CP3 PUMP ASSEMBLY
DPL81756
WATEROUS COMPANY
SOUTH ST. PAUL, MN 55075
 REL: 1/96 PAGE 4 OF 5 REV: 04/17/08

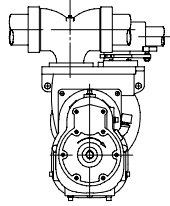
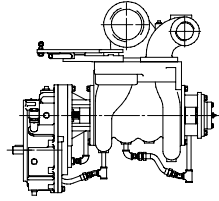


FIGURE 1



CLOCKWISE DRIVE SHAFT ROTATION (INPUT)

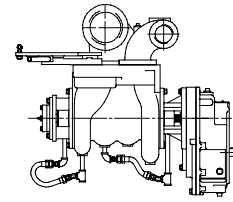
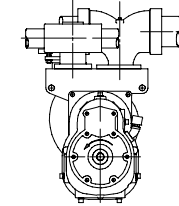


FIGURE 2



COUNTERCLOCKWISE DRIVE SHAFT ROTATION (INPUT)

AVAILABLE INPUT ROTATIONS

ORDERING INFORMATION:

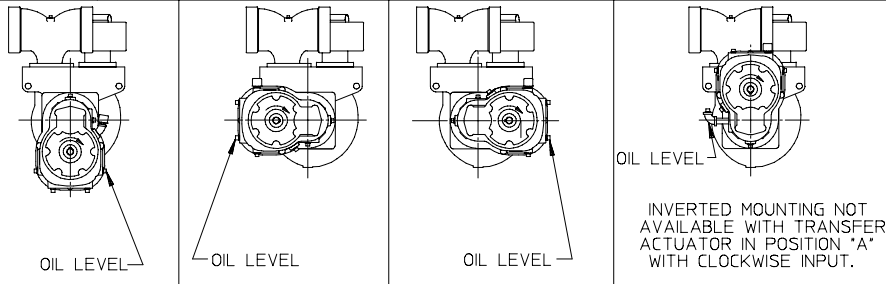
WHEN ORDERING, SUPPLY THE FOLLOWING INFORMATION:

1. COMPLETE PUMP / TRANSMISSION MODEL:

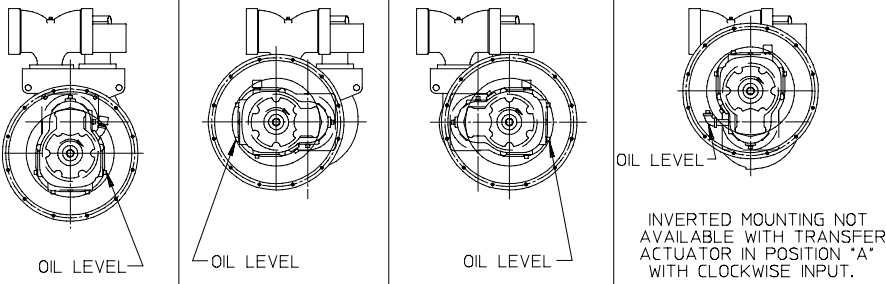
CPK-3
CPT-3

2. BASIC ASSEMBLY NUMBER 81756.

3. SUFFIX LETTERS WHICH INDICATE TRANSMISSION MOUNTING POSITION AND INPUT ROTATION.



V-VERTICAL MOUNTING L-LEFT SIDE MOUNTING R-RIGHT SIDE MOUNTING U-INVERTED MOUNTING
MEDIUM DUTY *K*



V-VERTICAL MOUNTING L-LEFT SIDE MOUNTING R-RIGHT SIDE MOUNTING U-INVERTED MOUNTING
MEDIUM DUTY *T*

AVAILABLE TRANSMISSION MOUNTING POSITIONS

(CLOCKWISE ROTATIONS SHOWN, MOUNTING POSITIONS ALSO APPLY TO COUNTERCLOCKWISE ROTATIONS)

EXAMPLE: 81756 - V 1

