

**RF-600 Self-Priming Pump
Dimensional Drawings**

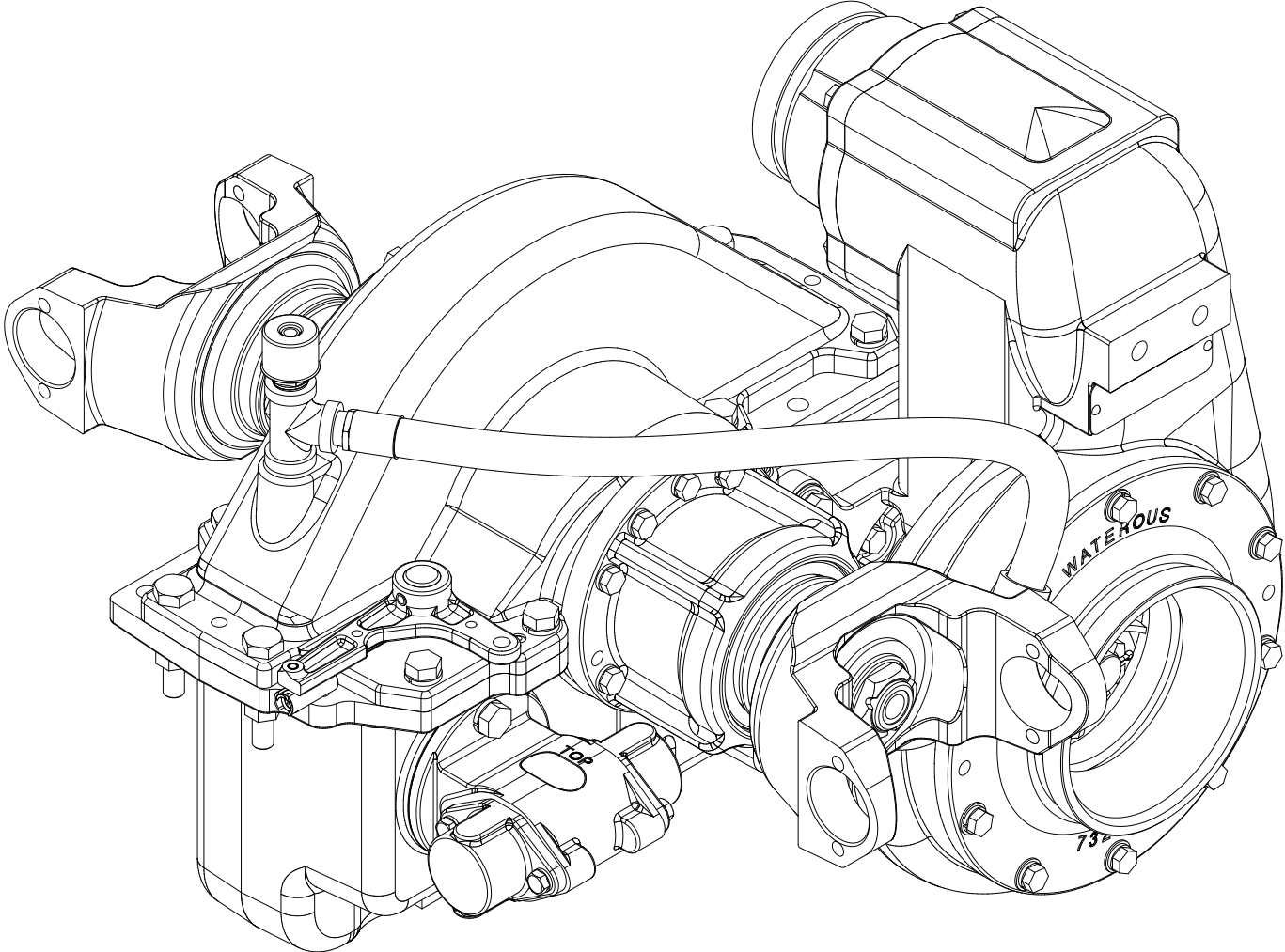
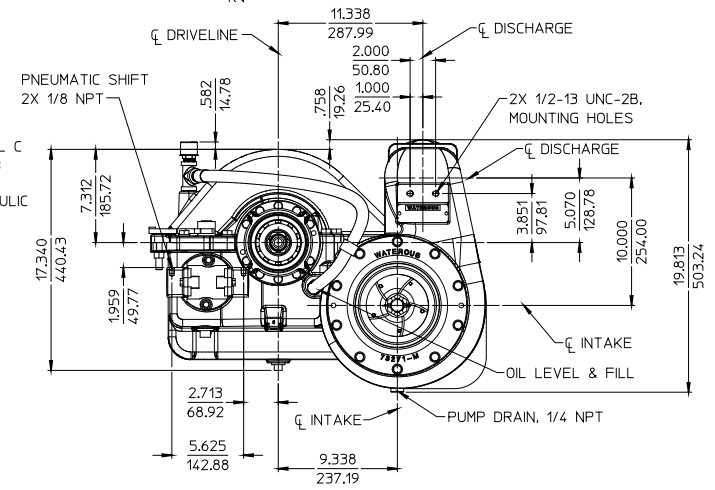
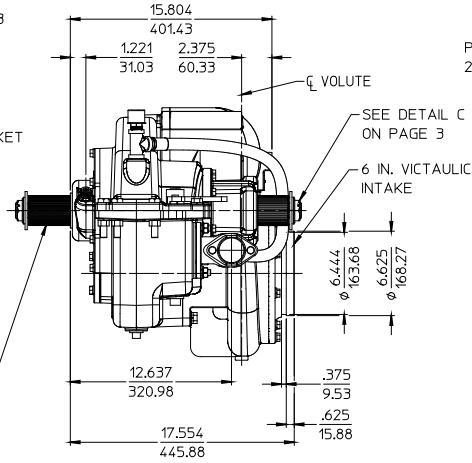
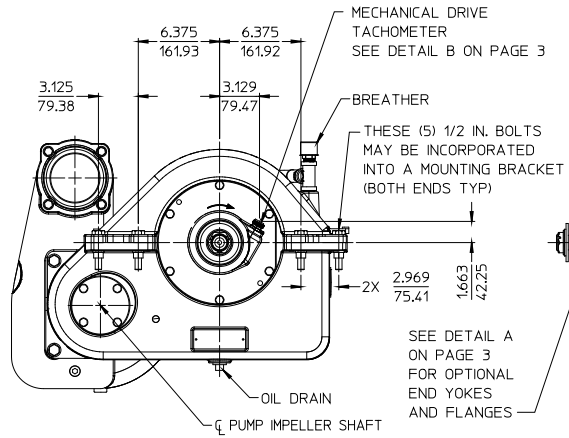
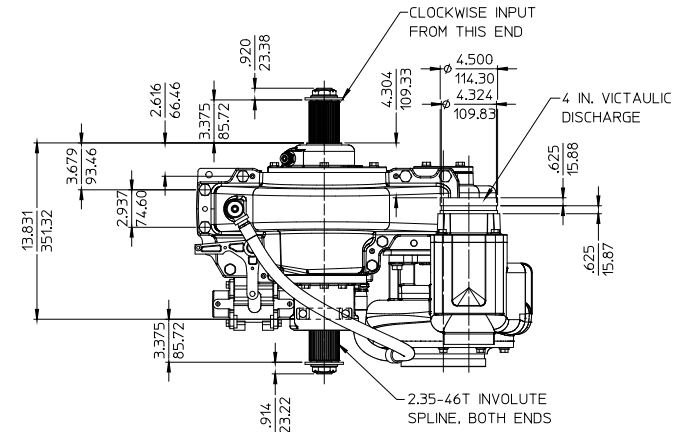
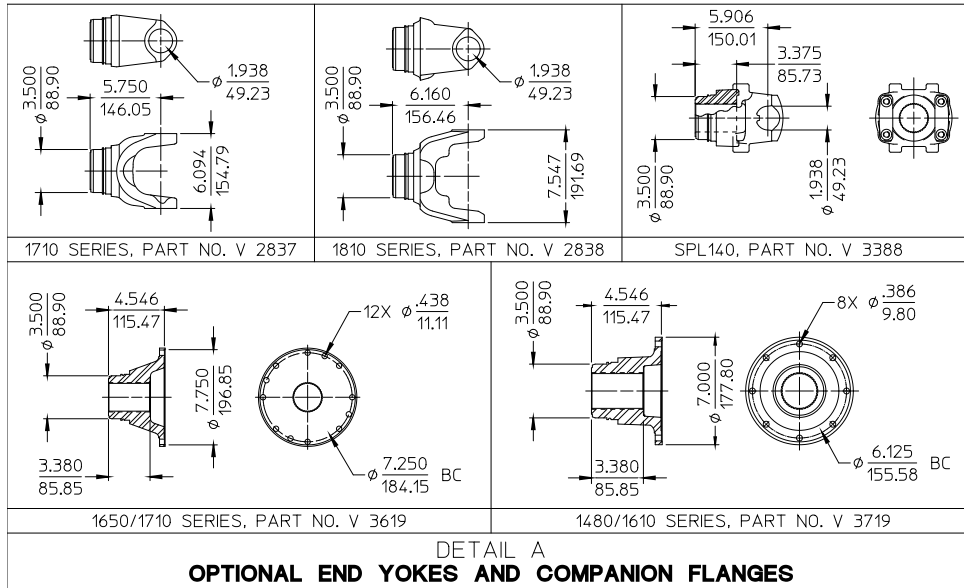


TABLE 1 - AVAILABLE DRIVELINE / MODELS								
DRIVELINE			OPTIONAL END YOKE AND COMPANION FLANGES AVAILABLE FROM WATEROUS, SEE DETAIL A ON PAGE 3				RATIO	MODEL
TYPE	SIZE	SPLINE	YOKE		CROSS AND BEARING KIT	COMPANION FLANGE		
EXTRA HEAVY DUTY	2.35 INCH	2.350-46T INVOLUTE	SPICER SERIES	PART NUMBER	V 2839	SPICER SERIES	PART NUMBER	
			1710	V 2837		1480/1610	V 3719	
			1810	V 2838		1650/1710	V 3619	
			SPL140	V 3388		V 3389		



ALL DIMENSIONS SHOWN AS INCH/MILLIMETER
 (INCH / MILLIMETER)

MODEL RF600WRX
 WRX SPLIT SHAFT CHAIN CASE
 CLOCKWISE INPUT
 (SEE TABLE 1 FOR AVAILABLE DRIVELINES/MODELS)



ALL DIMENSIONS SHOWN AS INCH/MILLIMETER

($\frac{\text{INCH}}{\text{MILLIMETER}}$)

