



Document Number <b>DPL82843-3</b>	Issue Date <b>12/14/11</b>	Rev. Date <b>9/20/18</b>
--------------------------------------	-------------------------------	-----------------------------

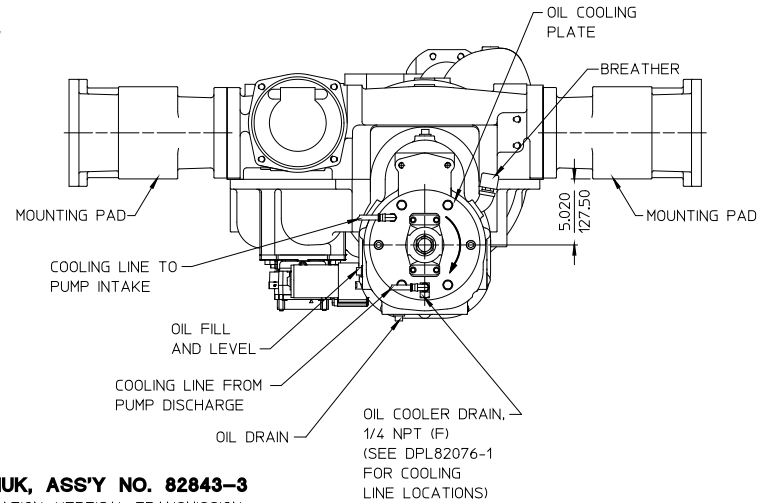
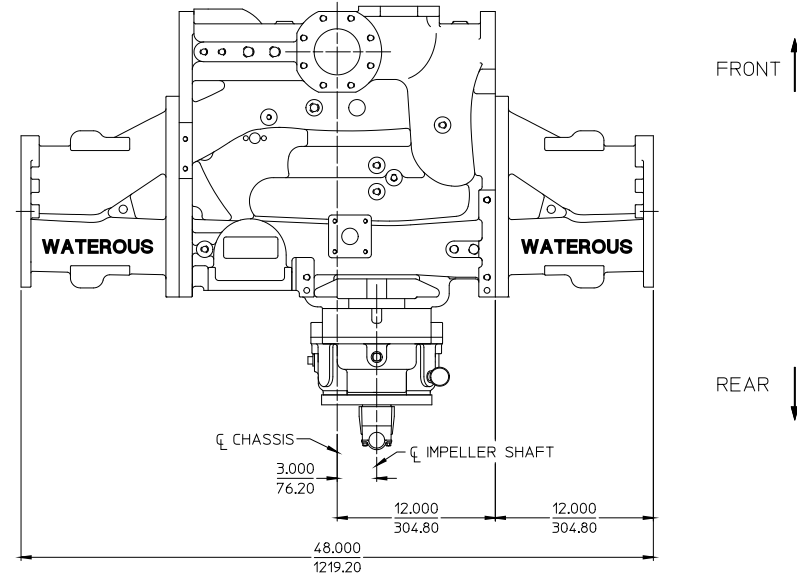
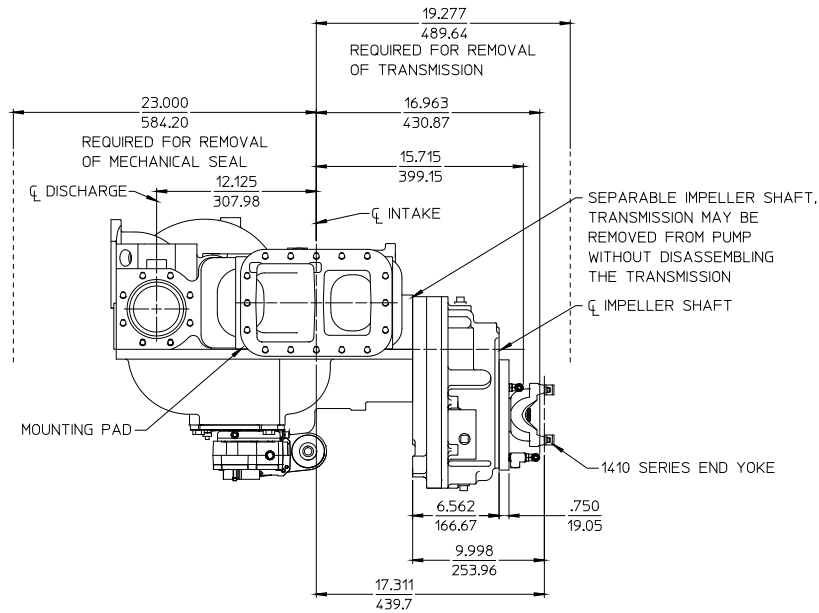
## Model CMUK Fire Pump Dimensional Drawing

Pump Type	Pump Model	Assembly No.	Transmission			Mounting	See Page
			Model	Drive	Input Rotation		
Two Stage Series/Parallel	CMU	82843-3	K Series	Extra Heavy Duty Two Gear Increaser, PRO Drive	CW	Vertical	2
						Inverted	3

NOTES:

1. SEE DRAWING DPL82076-2 FOR ADDITIONAL TRANSMISSION DETAILS.
2. SEE DRAWINGS DPL82084-2 AND DPL82084-5 FOR PRESSURE CONTROL SYSTEMS.
3. FOR DIMENSIONS NOT SHOWN, SEE DPL82843.

ALL DIMENSIONS SHOWN AS INCH/MILLIMETER  
(INCH / MILLIMETER)

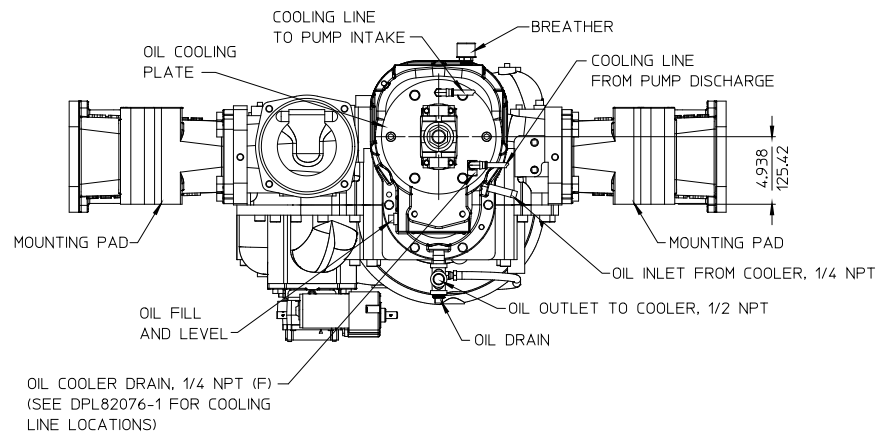
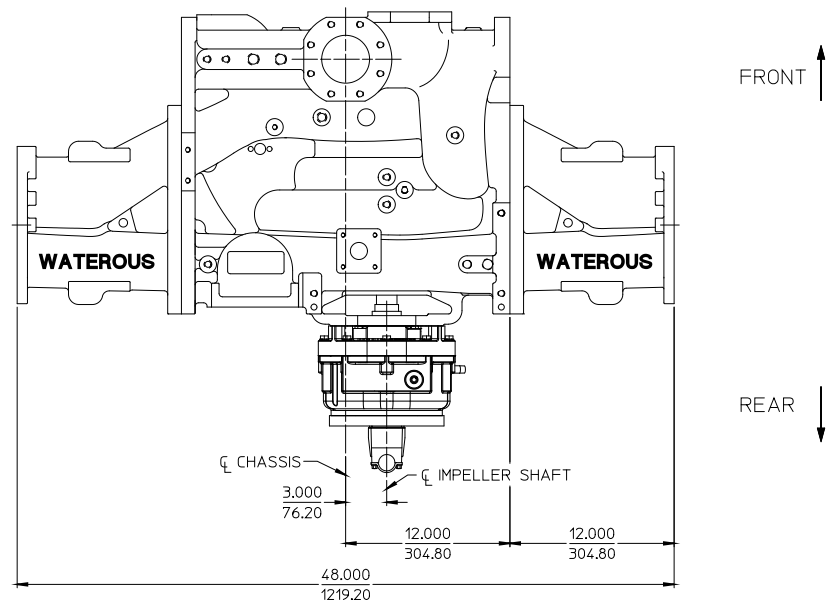
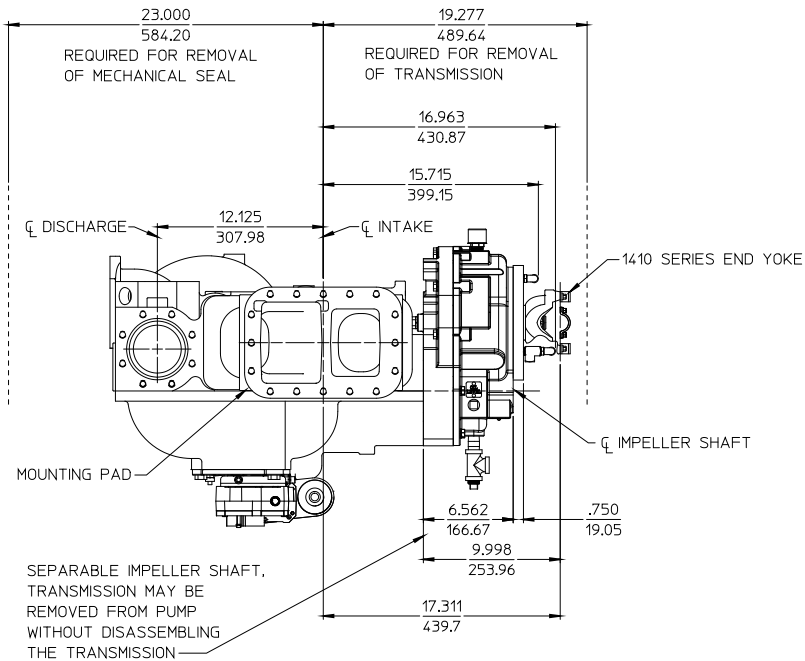


**MODEL CMUK, ASS'Y NO. 82843-3**  
CW INPUT ROTATION, VERTICAL TRANSMISSION

NOTES:

1. SEE DRAWING DPL82076-2 FOR ADDITIONAL TRANSMISSION DETAILS.
2. SEE DRAWINGS DPL82084-2 AND DPL82084-5 FOR PRESSURE CONTROL SYSTEMS.
3. FOR DIMENSIONS NOT SHOWN, SEE DPL82843.

ALL DIMENSIONS SHOWN AS INCH/MILLIMETER  
( INCH / MILLIMETER )



**MODEL CMUK, ASS'Y NO. 82843-3**

CW INPUT ROTATION, INVERTED TRANSMISSION