



Document Number	Issue Date	Rev. Date
DPL82917	07/12/06	11/23/11

Auto Tank Fill System 82916 Dimensional Drawings

Index:

Component	See Page	
Control Unit, Cables and Panel Components	2	
Ball Valve with Electric Actuator	2-1/2 in. Full Flow	3, 4
	3-1/2 in. Standard	5, 6
Optional Fittings for Intake Nipple Dump Flange and 3-1/2 in. Standard Ball Valve	7	
Typical Ball Valve Installations	8	

Ordering Information:

To Order a complete system, specify the following:

Control Unit, Cables and Panel Components:

Part Number which indicates System Voltage:

12 Volt, Part Number 82916-1A

24 Volt, Part Number 82916-1B

Ball Valve with Electric Actuator:

Part Number which indicates Valve Size, Mounting and Figure No. (Operator Position):

See page 3 for available 2-1/2 in. Full-Flow part numbers

See page 5 for available 3-1/2 in. Standard part numbers

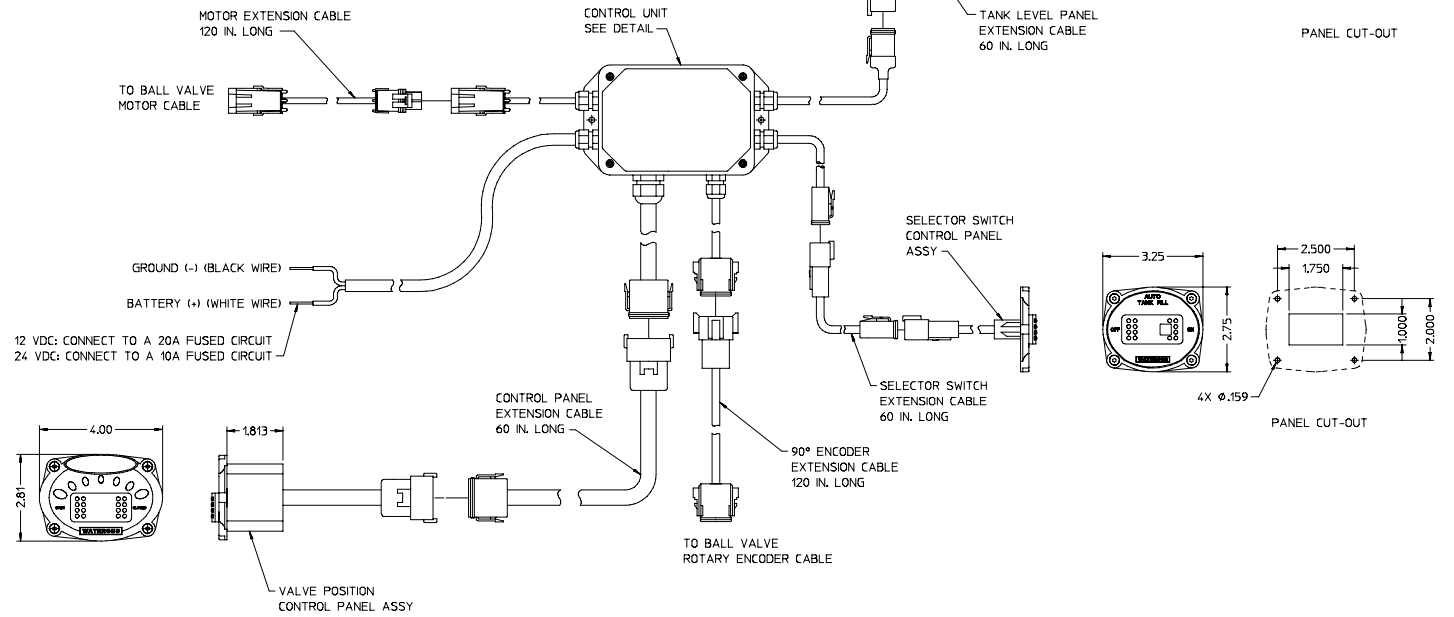
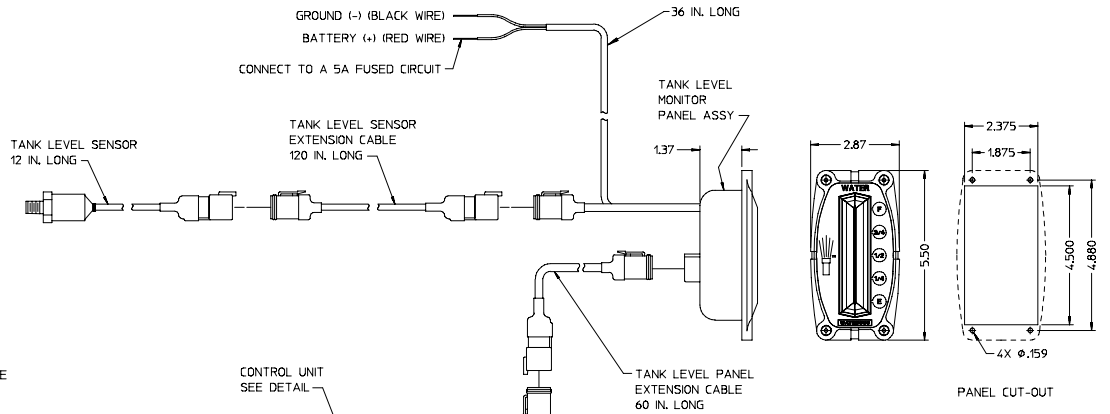
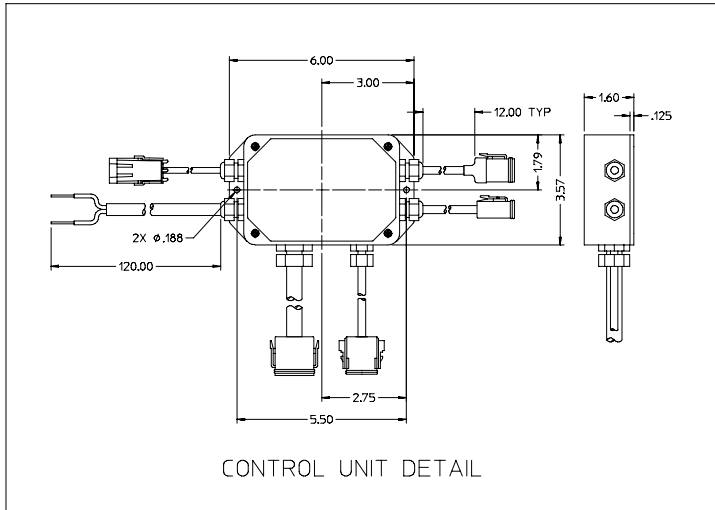
Optional Fittings:

For installation of 2-1/2 in. Ball Valve on Intake Nipple Dump Flange: *(Reference page 8)*

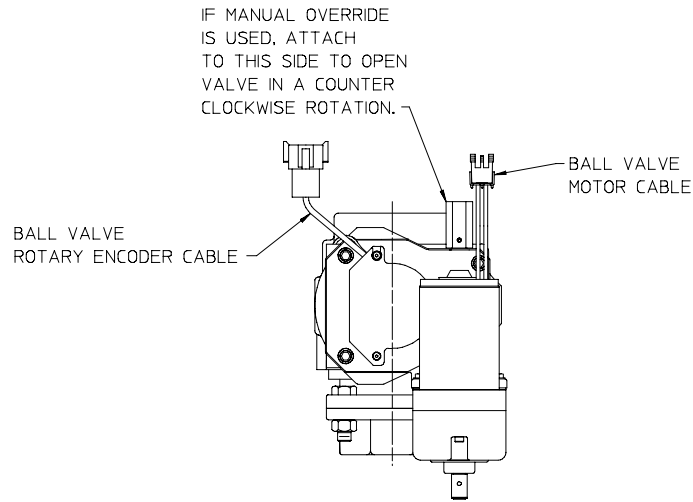
Specify part number, see page 7

Tapped Flanges for In-Line mounting of 3-1/2 in. Standard Ball Valve:

Specify part number, see page 7



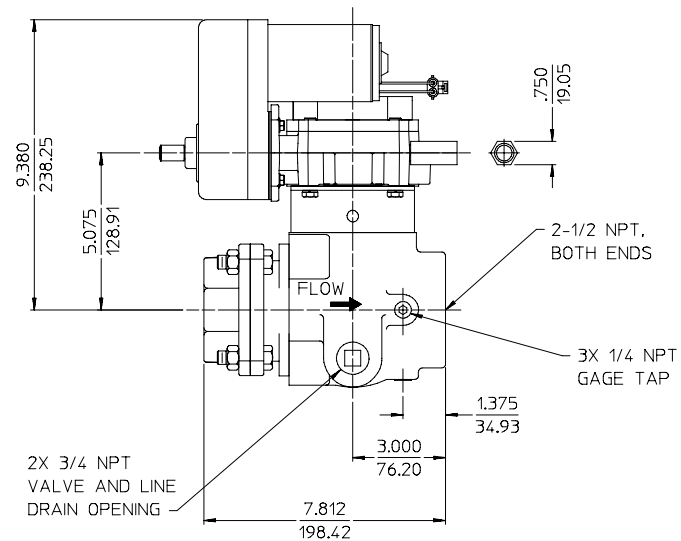
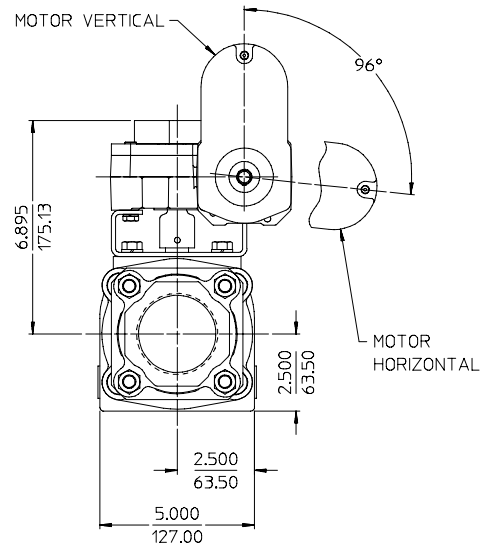
CONTROL UNIT, CABLES AND PANEL COMPONENTS



NOTE:
WHEN ORDERING SPECIFY PART NUMBER BASED ON MOTOR MOUNTING, VOLTAGE AND FIGURE NUMBER:

MOUNTING	MOTOR		PART NO.
	VOLTAGE	FIG. NO.	
VERTICAL	12	1	82916-2A
		2	82916-2B
		3	82916-2C
	24	7	82916-2D
		1	82916-2E
		2	82916-2F
HORIZONTAL	12	3	82916-2G
		7	82916-2H
		4	82916-2J
		5	82916-2K
	24	6	82916-2L
		8	82916-2M
		4	82916-2N
		5	82916-2P
		6	82916-2R
		8	82916-2S

SEE PAGE 4 FOR FIGURE NUMBER DIAGRAMS

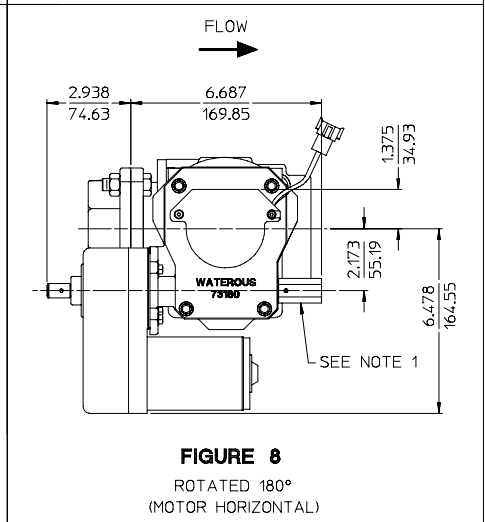
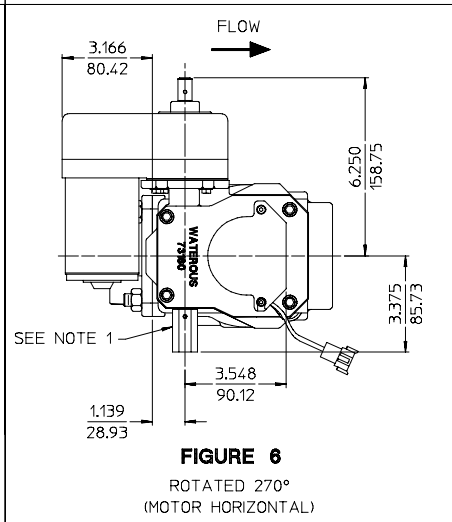
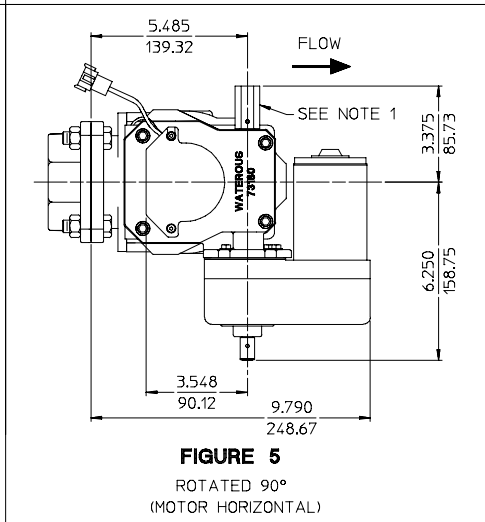
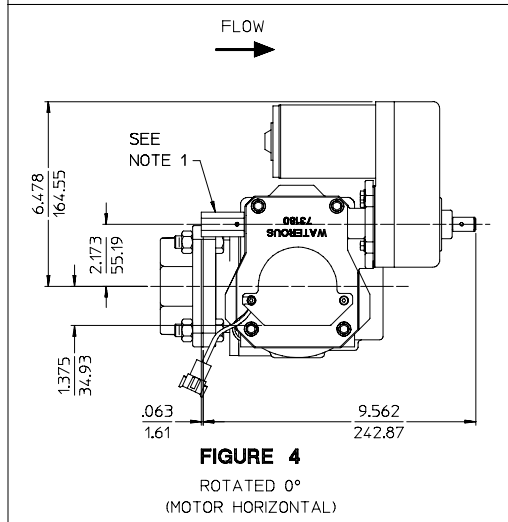
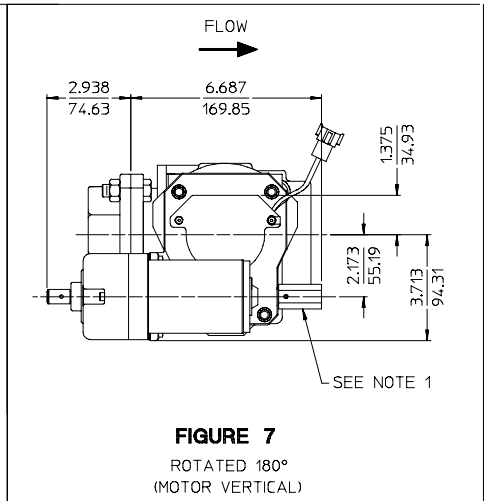
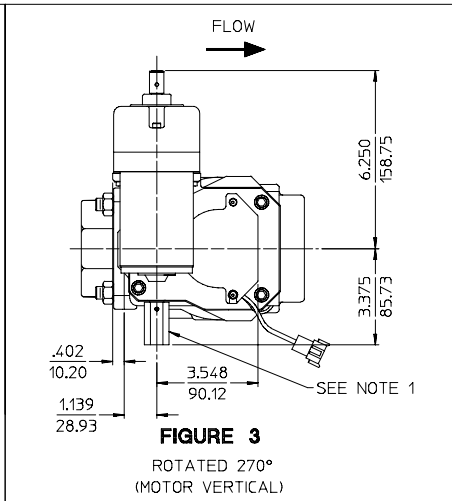
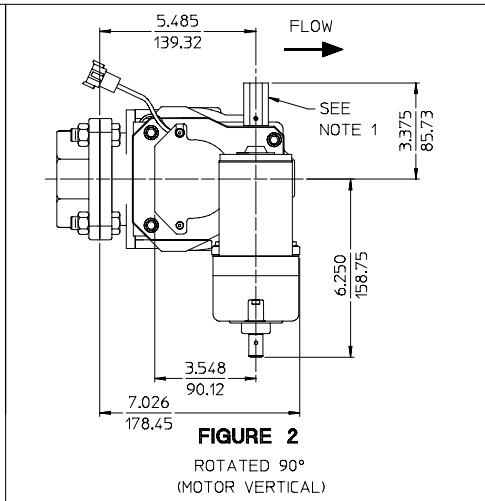
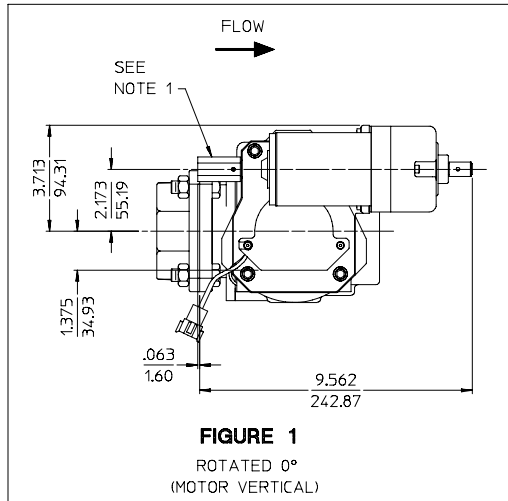


2-1/2 FULL-FLOW BALL VALVE WITH ELECTRIC ROTARY ACTUATOR

(FIGURE 7 SHOWN)
(IN-LINE MOUNTING ONLY AVAILABLE)

ALL DIMENSIONS SHOWN AS INCH/MILLIMETER

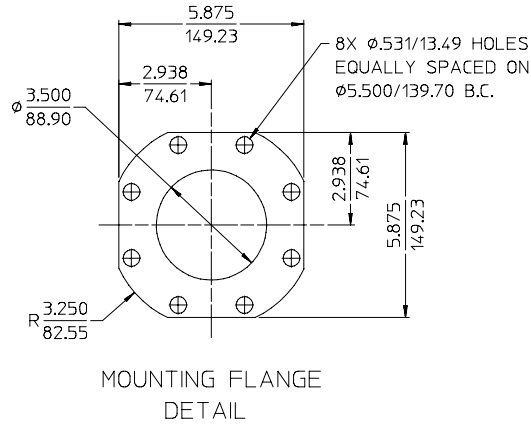
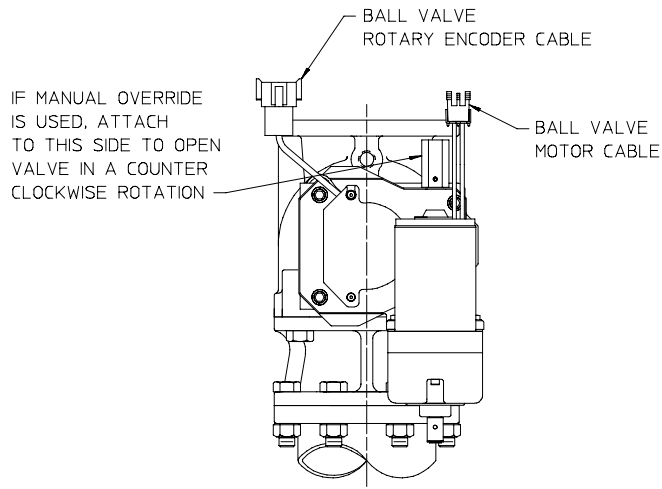
($\frac{\text{INCH}}{\text{MILLIMETER}}$)



2-1/2 FULL-FLOW ACTUATOR MOUNTING FIGURE NUMBERS

NOTE:
1. ADAPTER NUT SHOWN
(USED FOR MANUAL OVERRIDE)
WILL ADD .750 TO LENGTH OF SHAFT,
OR IF NOT USED WILL DECREASE
LENGTH BY .750.

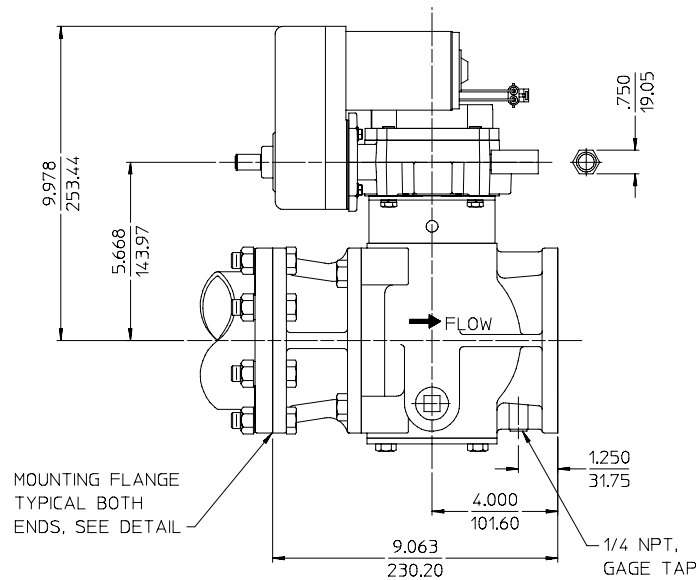
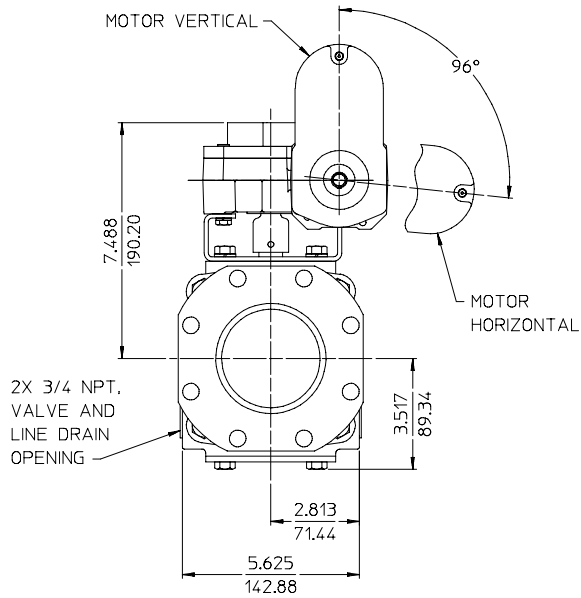
ALL DIMENSIONS SHOWN
AS INCH/MILLIMETER
(INCH
MILLIMETER)



NOTE:
WHEN ORDERING SPECIFY PART NUMBER BASED ON
MOTOR MOUNTING, VOLTAGE AND FIGURE NUMBER:

MOUNTING	MOTOR		PART NO.
	VOLTAGE	FIG. NO.	
VERTICAL	12	1	82916-3A
		2	82916-3B
		3	82916-3C
	24	7	82916-3D
		1	82916-3E
		2	82916-3F
HORIZONTAL	12	3	82916-3G
		7	82916-3H
		4	82916-3J
		5	82916-3K
	24	6	82916-3L
		8	82916-3M
		4	82916-3N
		5	82916-3P
		6	82916-3R
		8	82916-3S

SEE PAGE 6 FOR FIGURE NUMBER DIAGRAMS



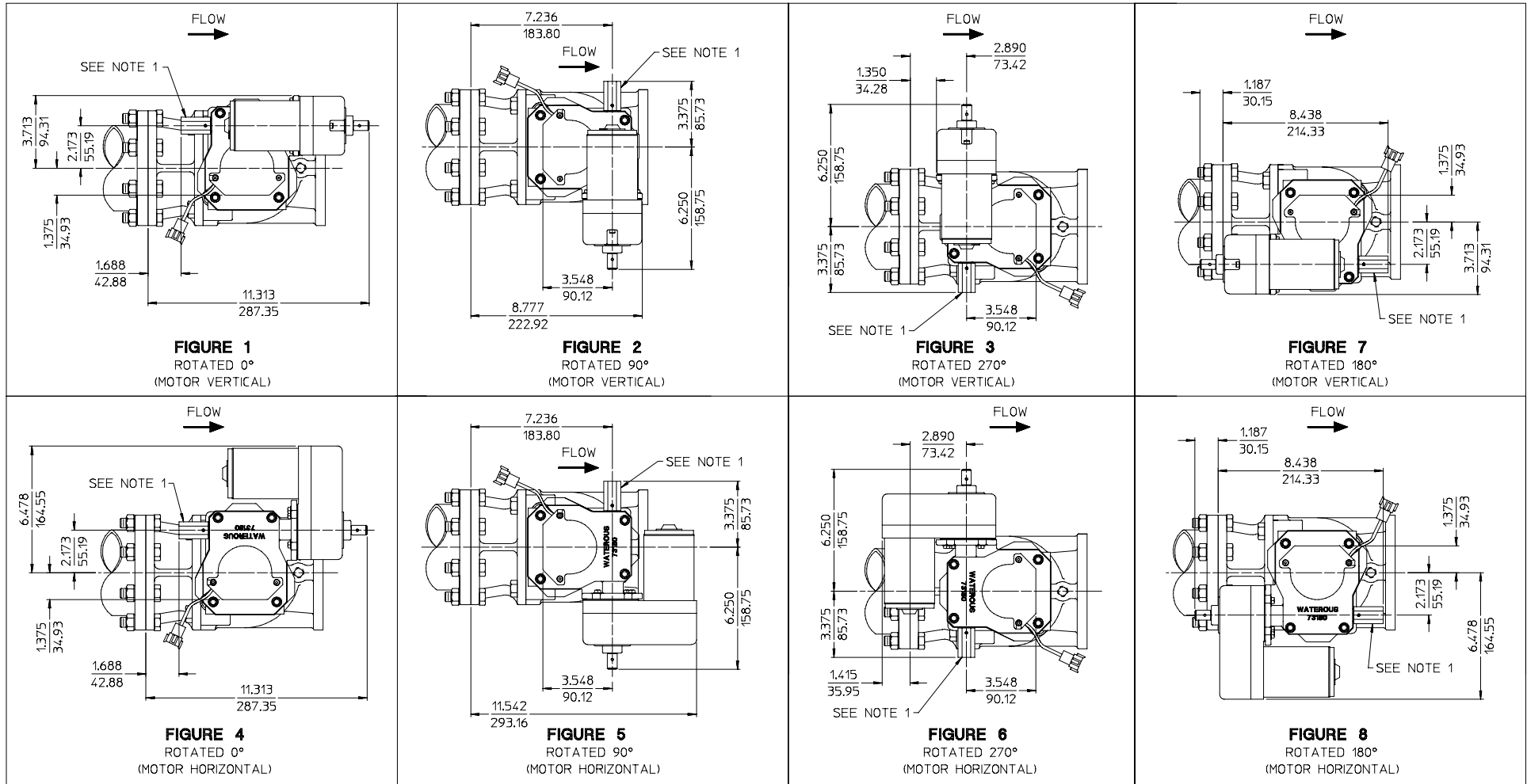
IF IN-LINE MOUNTING IS REQUIRED, ORDER
TAPPED FLANGES FROM PAGE 7

**3-1/2 STANDARD BALL
VALVE WITH ELECTRIC ROTARY
ACTUATOR**

(FIGURE 7 SHOWN)
(FLANGE MOUNTED SHOWN)

ALL DIMENSIONS SHOWN
AS INCH/MILLIMETER

($\frac{\text{INCH}}{\text{MILLIMETER}}$)



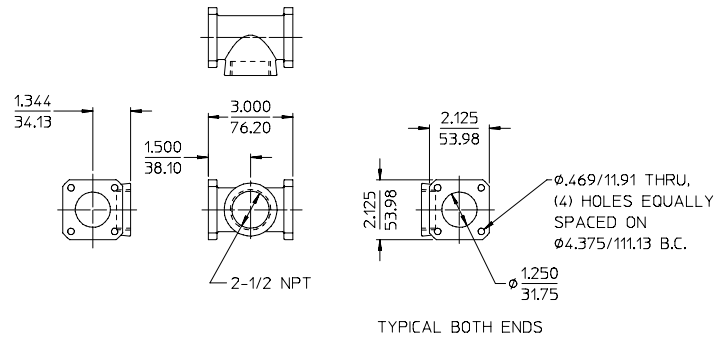
3-1/2 STANDARD ACTUATOR MOUNTING FIGURE NUMBERS

NOTE:
1. ADAPTER NUT SHOWN (USED FOR MANUAL OVERRIDE)
WILL ADD .750 TO LENGTH OF SHAFT, OR IF NOT USED WILL DECREASE
LENGTH BY .750.

ALL DIMENSIONS SHOWN
AS INCH/MILLIMETER
(INCH / MILLIMETER)

**2-1/2 IN. 4-BOLT FITTINGS
FOR INTAKE NIPPLE DUMP FLANGE**

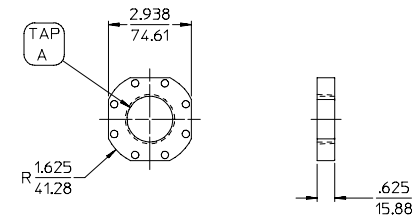
NOTE: ONE FITTING, GASKET OR O-RING AND MOUNTING
HARDWARE IS INCLUDED WITH EACH PART NO.



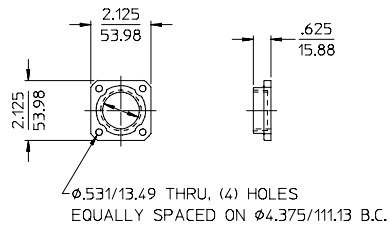
PART NO.	INCLUDES GASKET
82916-4E	51218

**3-1/2 IN. 8-BOLT FITTINGS
FOR 3-1/2 IN. STANDARD BALL VALVE**

NOTE: TWO FLANGES AND MOUNTING HARDWARE
ARE INCLUDED WITH EACH PART NO.
(GASKETS ARE INCLUDED WITH THE VALVE)
FLANGES ARE SHIPPED LOOSE FOR INSTALLATION BY THE OEM



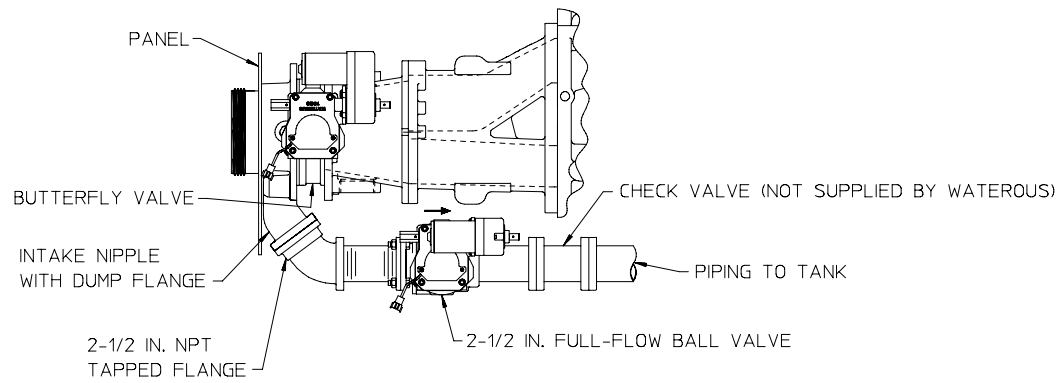
DESCRIPTION	PART NO.	TAP A
TAPPED FLANGE	82916-4A	2-1/2 NPT
	82916-4B	3 NPT
	82916-4C	3-1/2 NPT
	82916-4D	4 NPT



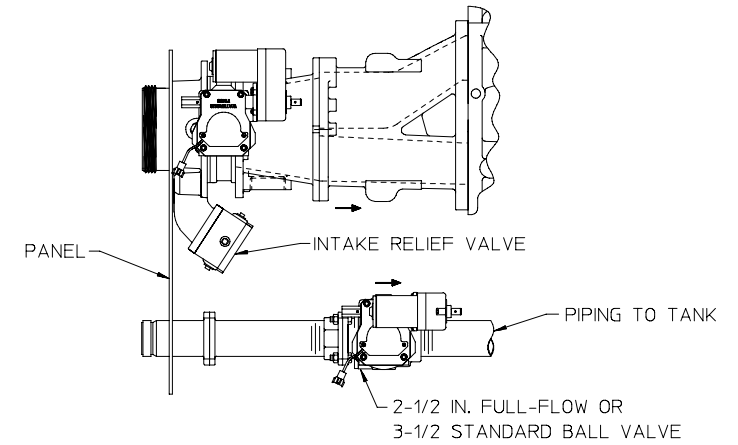
PART NO.	DESCRIPTION	INCLUDES O-RING
82916-4F	2.5 NPT TAPPED FLANGE	W 3756-4

ALL DIMENSIONS SHOWN
AS INCH/MILLIMETER
(INCH
MILLIMETER)

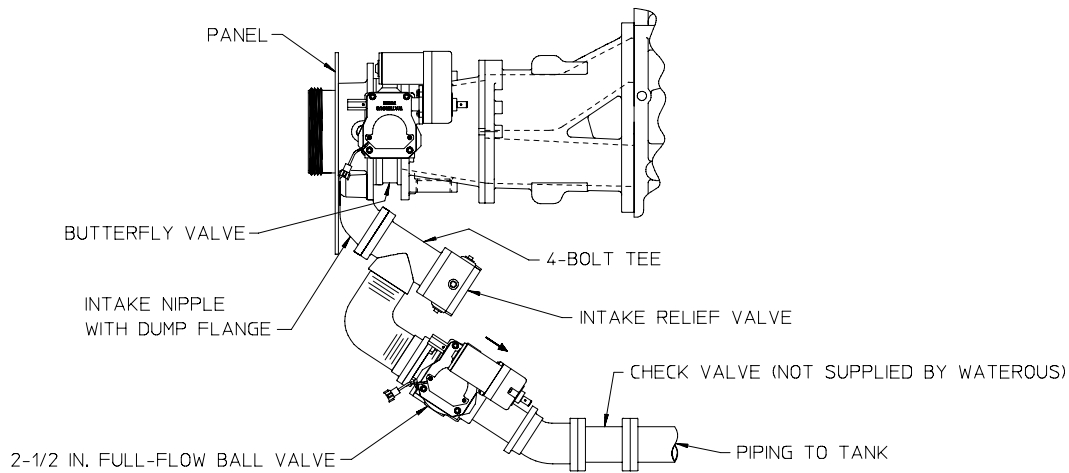
OPTIONAL TAPPED FLANGES AND FITTINGS



2-1/2 IN. FULL-FLOW BALL VALVE MOUNTED ON INTAKE NIPPLE DUMP FLANGE, INTAKE RELIEF VALVE NOT USED



2-1/2 FULL-FLOW OR 3-1/2 STANDARD BALL VALVE MOUNTED IN A SEPARATE EXTERNAL FILL LINE



2-1/2 IN. FULL-FLOW BALL VALVE MOUNTED ON INTAKE NIPPLE DUMP FLANGE WITH INTAKE RELIEF VALVE

TYPICAL BALL VALVE INSTALLATIONS