



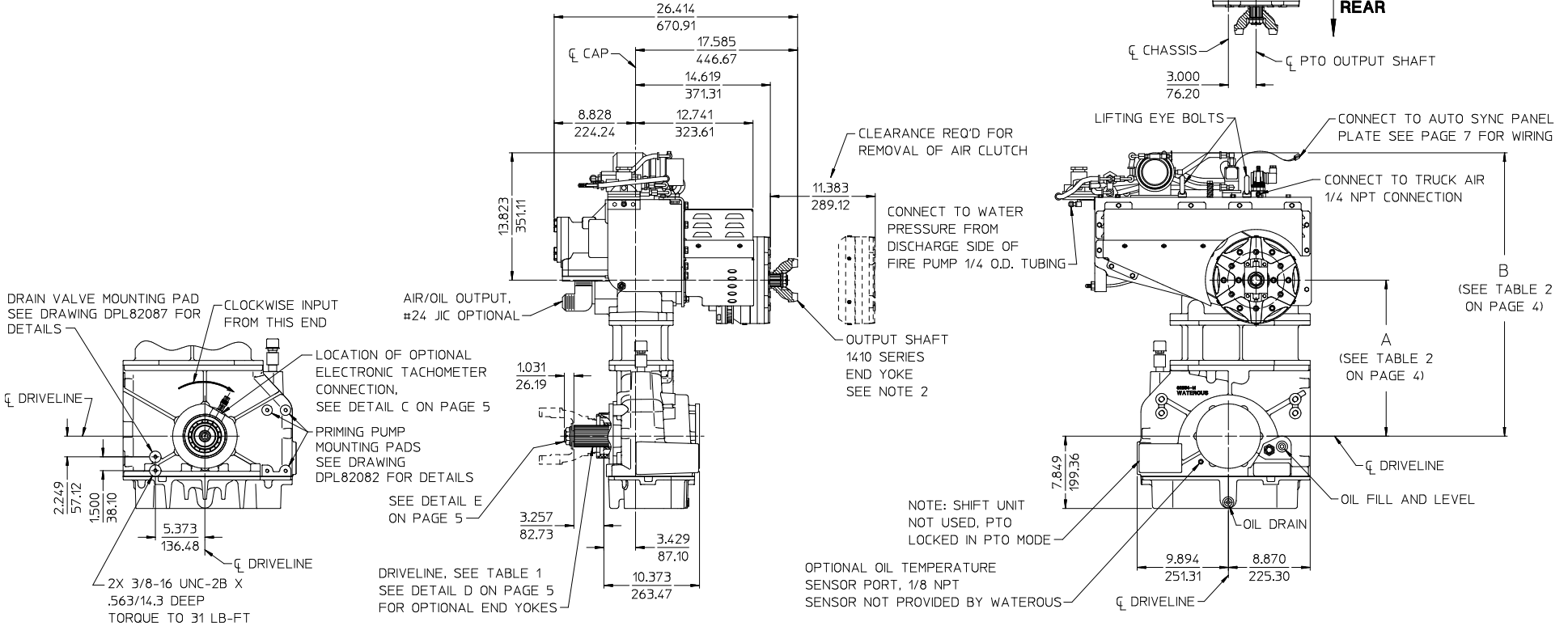
Document Number	Issue Date	Rev. Date
DPL83001	07/21/09	10/27/15

TC20 Series P.T.O. with Eclipse ES™ CAFS Dimensional Drawings

Item	See Page	
	Input and Output Shaft	Input Shaft Only
TC20 Models	2	3
Ratio and Drop Dimensions	4	4
Optional End Yokes and Companion Flanges	5	5
Electronic Tachometer Connection		
Mounting Bracket Attachment Locations	6	6
Compressor	Electrical and Plumbing Schematics	7
	Components Shipped Loose	8, 9

TABLE 1 - AVAILABLE DRIVELINES / MODELS								
DRIVELINE			OPTIONAL END YOKES AND COMPANION FLANGES AVAILABLE FROM WATEROUS, SEE DETAIL D ON PAGE 5				PTO MODELS	
TYPE	SIZE	SPLINE	YOKE		CROSS AND BEARING KIT	COMPANION FLANGE		
			SPICER SERIES	PART NUMBER		SPICER SERIES		PART NUMBER
EXTRA HEAVY DUTY	2.35 INCH	2.35-46T INVOLUTE	1710	V 2837	V 2839	1480/1610	V 3719	TC20B, TC20C, TC20D, TC20E, TC20F
			1810	V 2838	V 2840			
			SPL140	V 3388	V 3389	1710/1810	V 3619	

- NOTES:
 1. SEE TABLE 2 ON PAGE 4 FOR AVAILABLE RATIOS.
 2. MAXIMUM DRIVE SHAFT LENGTH: 45 INCHES
 MAXIMUM U-JOINT ANGLE: 3°



ALL DIMENSIONS SHOWN AS INCH/MILLIMETER
 (INCH / MILLIMETER)

**TC20 MODELS
 INPUT SHAFT ONLY**

CLUTCH AND YOKE MOUNTED ON REAR (OUTPUT SHAFT SIDE) OF PTO
 CLOCKWISE INPUT, MODEL TC20E, 2.27 RATIO SHOWN

TC20 SERIES P.T.O.
 DPL83001
 WATEROUS COMPANY
 SOUTH ST. PAUL, MN 55075
 PAGE 3 OF 9

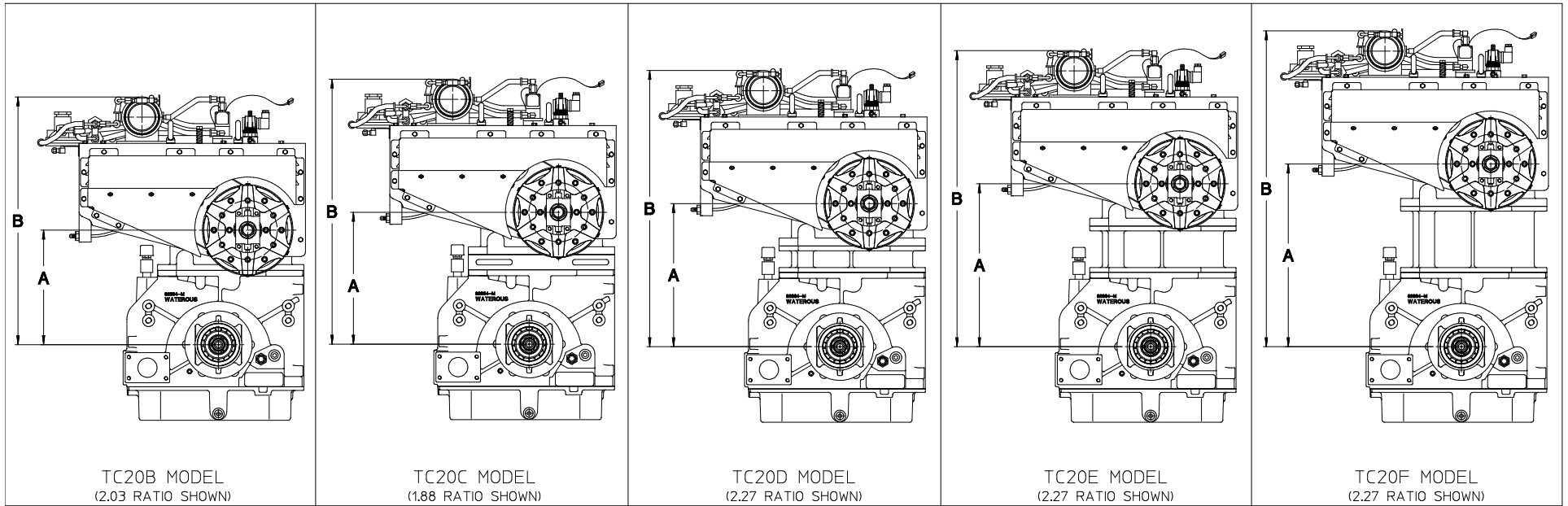


TABLE 2 - AVAILABLE RATIOS

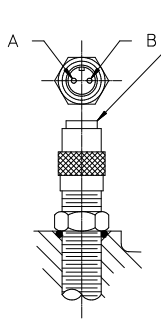
DRIVE TO DRIVEN RATIO	TC20B		TC20C		TC20D		TC20E		TC20F	
	DIMENSION A	DIMENSION B	DIMENSION A	DIMENSION B	DIMENSION A	DIMENSION B	DIMENSION A	DIMENSION B	DIMENSION A	DIMENSION B
1.58	12.205/310.01	26.028/661.12	13.756/349.40	27.579/700.51	14.788/375.62	28.611/726.73	16.830/427.48	30.653/778.59	18.861/479.07	32.684/830.18
1.69	12.290/312.17	26.113/663.28	13.839/351.51	27.662/702.62	14.876/377.85	28.699/728.96	16.923/429.84	30.746/780.95	18.961/481.61	32.784/832.72
1.79	11.958/303.73	25.781/654.84	14.045/356.74	27.868/707.85	15.072/382.83	28.895/733.94	17.127/435.03	30.950/786.14	19.168/486.87	32.991/837.98
1.88	12.129/308.08	25.952/659.19	13.690/347.73	27.513/698.84	14.717/373.81	28.540/724.92	16.773/426.03	30.596/777.14	18.809/477.75	32.632/828.86
1.97	12.306/312.57	26.129/663.68	13.870/352.30	27.693/703.41	14.912/378.76	28.735/729.87	16.970/431.04	30.793/782.15	19.012/482.90	32.835/834.01
2.03	11.896/302.16	25.719/653.27	13.984/355.19	27.807/706.30	15.028/381.71	28.851/732.82	17.086/433.98	30.909/785.09	19.132/485.95	32.955/837.06
2.27	12.240/310.90	26.063/662.01	13.811/350.80	27.634/701.91	14.856/377.34	28.679/728.45	16.920/429.77	30.743/780.88	18.971/481.86	32.794/832.97

ALL DIMENSIONS SHOWN AS INCH/MILLIMETER

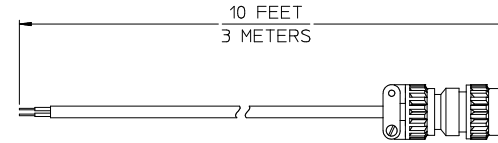
(INCH
MILLIMETER)

RATIO AND DROP DIMENSIONS

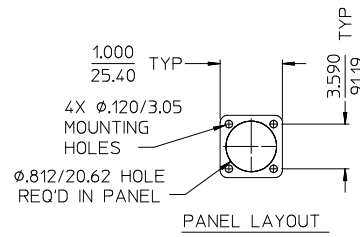
TC20 SERIES P.T.O.
DPL83001
WATEROUS COMPANY
SOUTH ST. PAUL, MN 55075
PAGE 4 OF 9



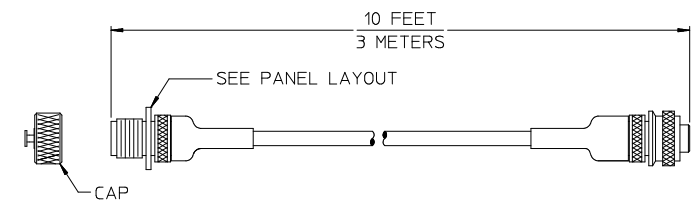
TEMPERATURE: -65°F TO +225°F
 -54°C TO +107°C
 OUTPUT POLARITY: PIN "B" POSITIVE
 DC RESISTANCE: 1000-1300 OHMS
 INDUCTANCE: 300-410 MH NOMINAL
 OUTPUT VOLTAGE: 160-240 VOLTS
 P-P
 OUTPUT CONNECTOR : MATES WITH
 MS3106A-10SL-4S



ORDER PART NO. V 3398



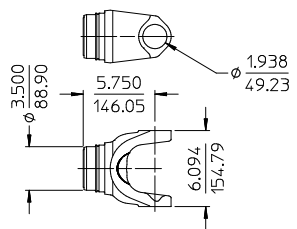
PANEL LAYOUT



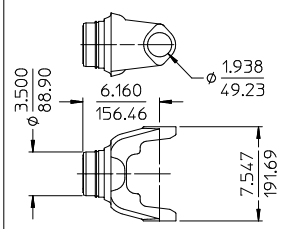
ORDER PART NO. 63033

OPTIONAL CABLES

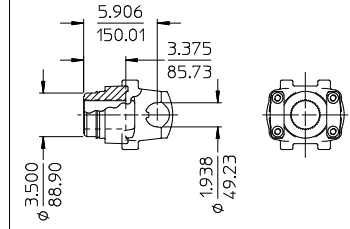
DETAIL C
OPTIONAL ELECTRONIC TACHOMETER CONNECTION



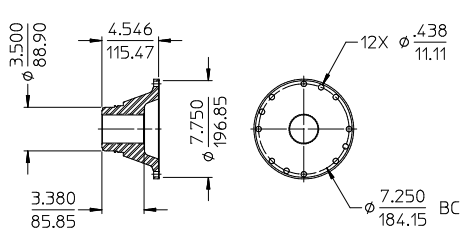
1710 SERIES, PART NO. V 2837



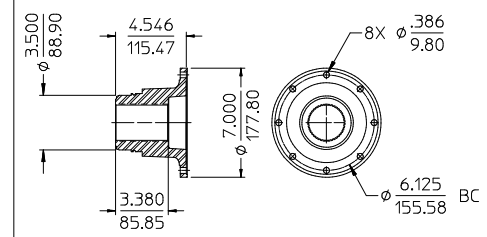
1810 SERIES, PART NO. V 2838



SPL 140, PART NO. V 3388



1710/1810 SERIES, PART NO. V 3619



1480/1610 SERIES, PART NO. V 3719

DETAIL D
OPTIONAL DRIVE LINE END YOKES AND COMPANION FLANGE

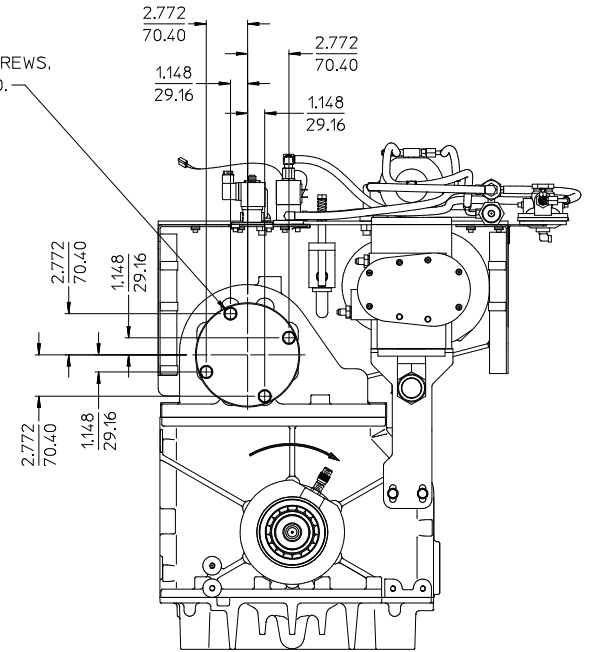
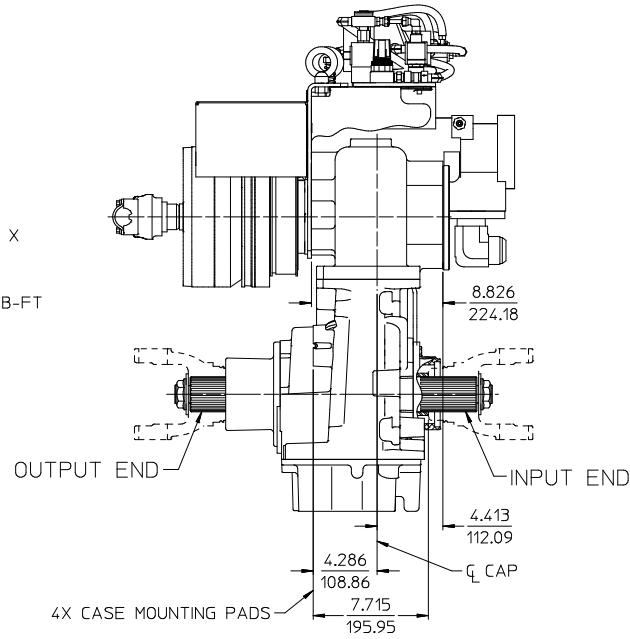
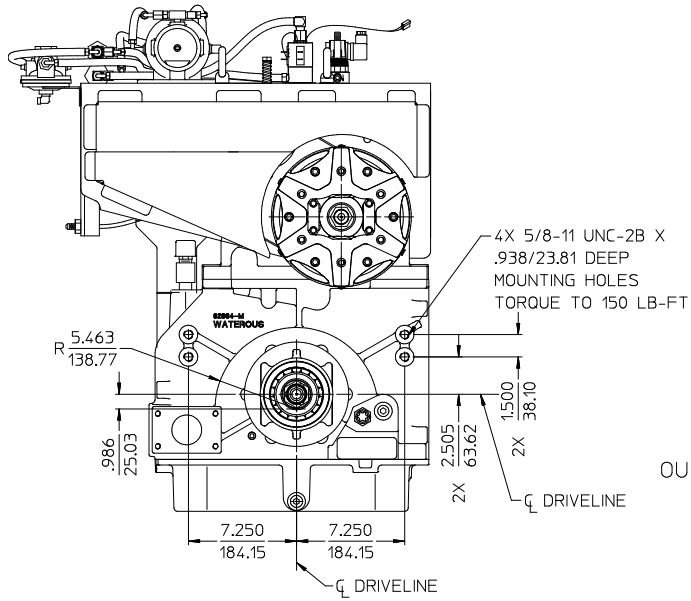
1-1/4 -18 UNEF NUT
 WITH WASHER. TORQUE
 NUT TO 475-525 LB-FT.

DETAIL E
 COMPONENTS INCLUDED
 ON DRIVELINES

ALL DIMENSIONS SHOWN AS INCH/MILLIMETER
 (INCH)
 (MILLIMETER)

TC20 SERIES P.T.O.
 DPL83001
 WATEROUS COMPANY
 SOUTH ST. PAUL, MN 55075
 PAGE 5 OF 9

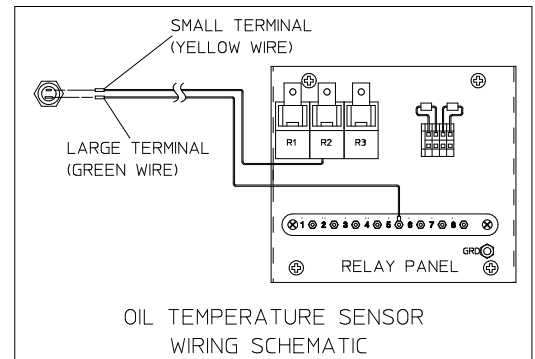
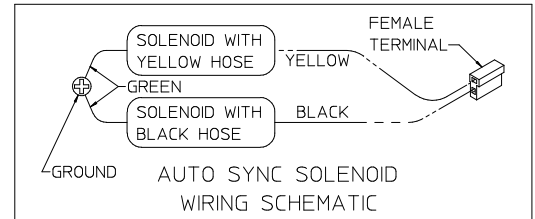
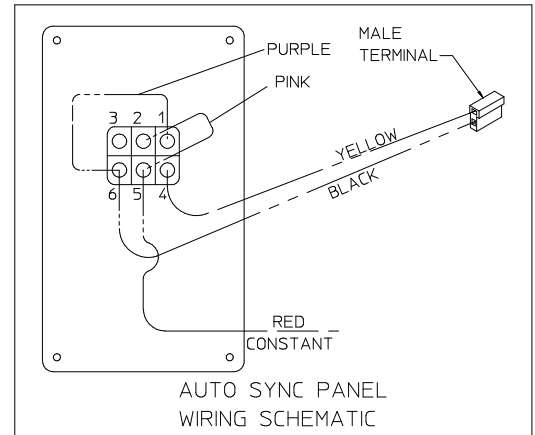
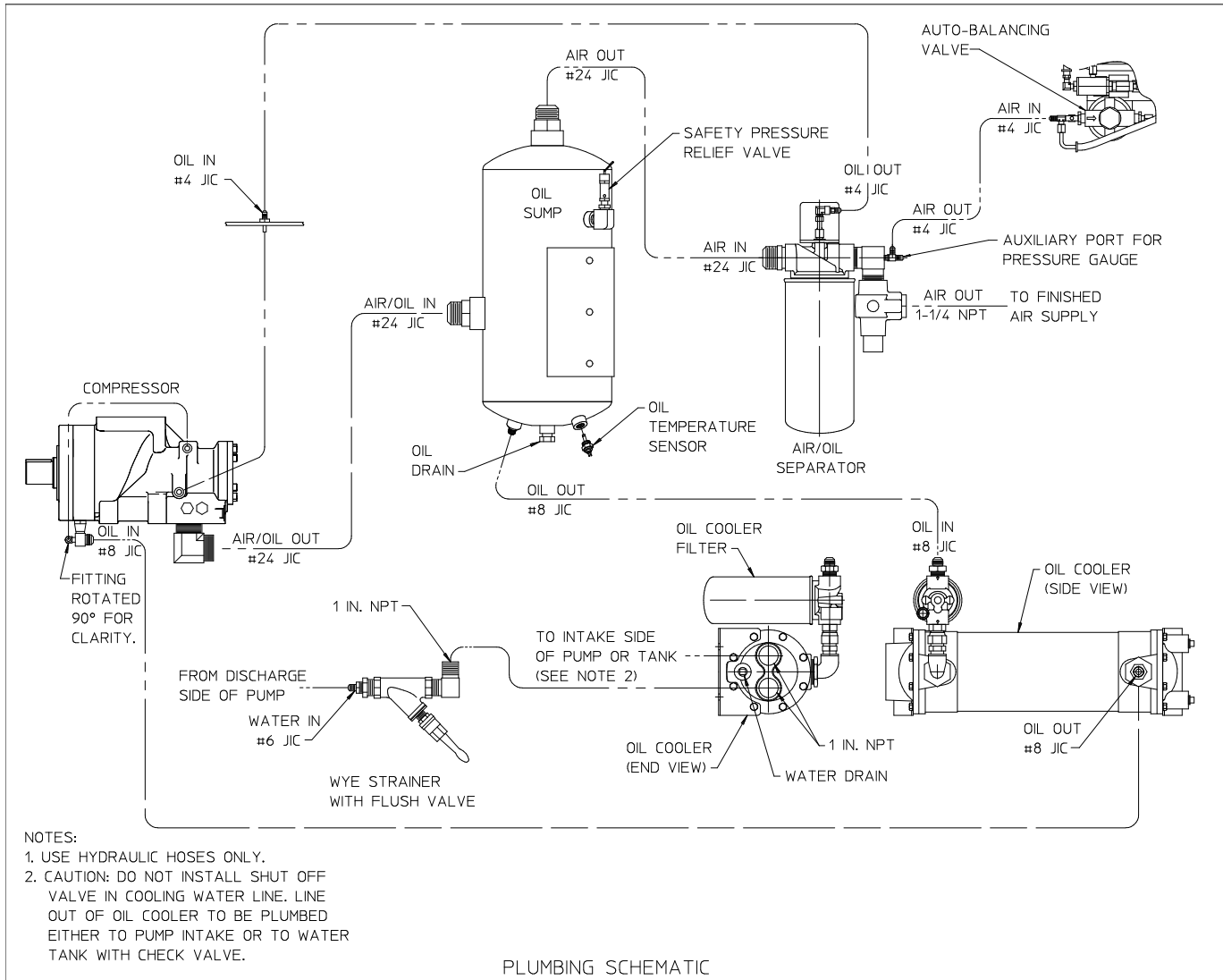
REPLACE 1/2-13 X 1-1/4 IN. HEX HEAD SCREWS WITH LONGER SCREWS,
LENGTH DEPENDENT ON THE THICKNESS OF THE BRACKET USED.



ALL DIMENSIONS SHOWN AS INCH/MILLIMETER

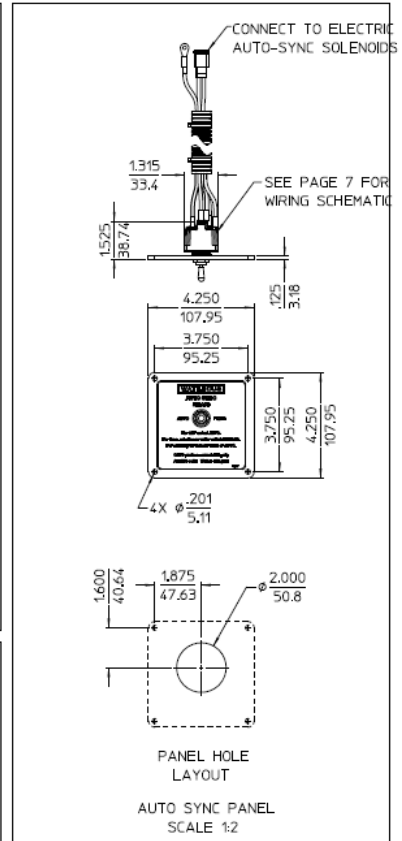
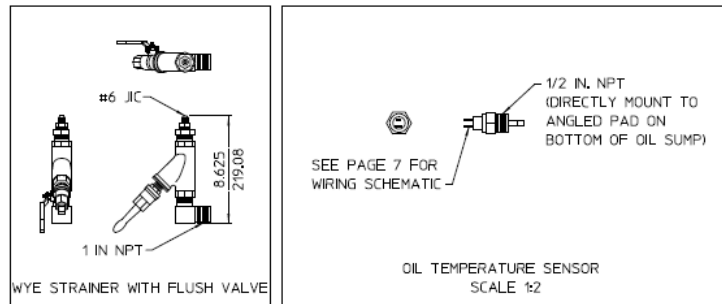
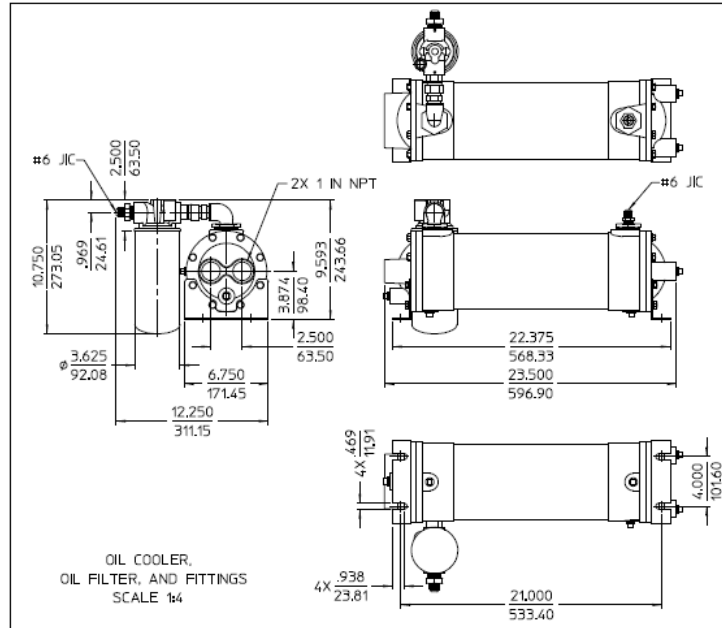
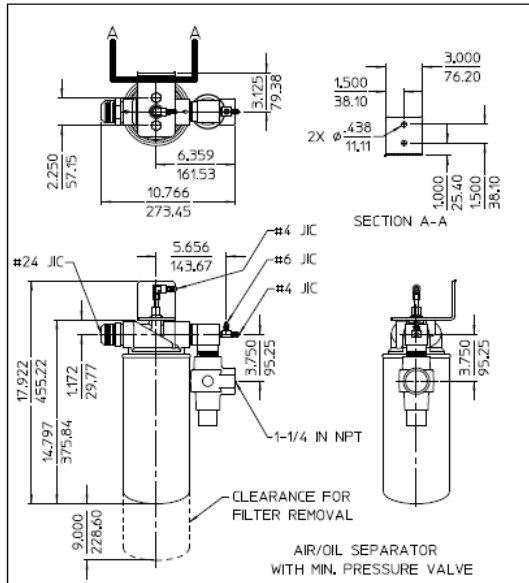
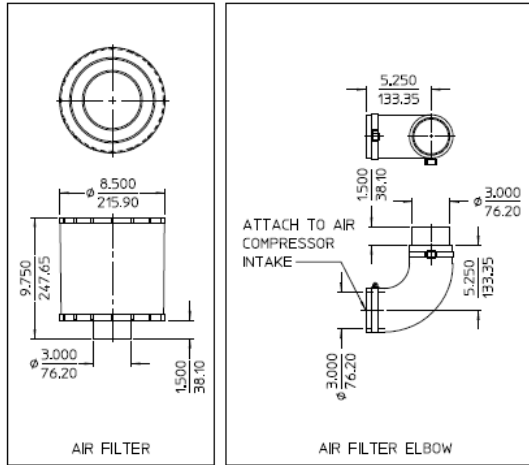
($\frac{\text{INCH}}{\text{MILLIMETER}}$)

MOUNTING BRACKET ATTACHMENT LOCATIONS



ALL DIMENSIONS SHOWN AS INCH/MILLIMETER
(INCH / MILLIMETER)

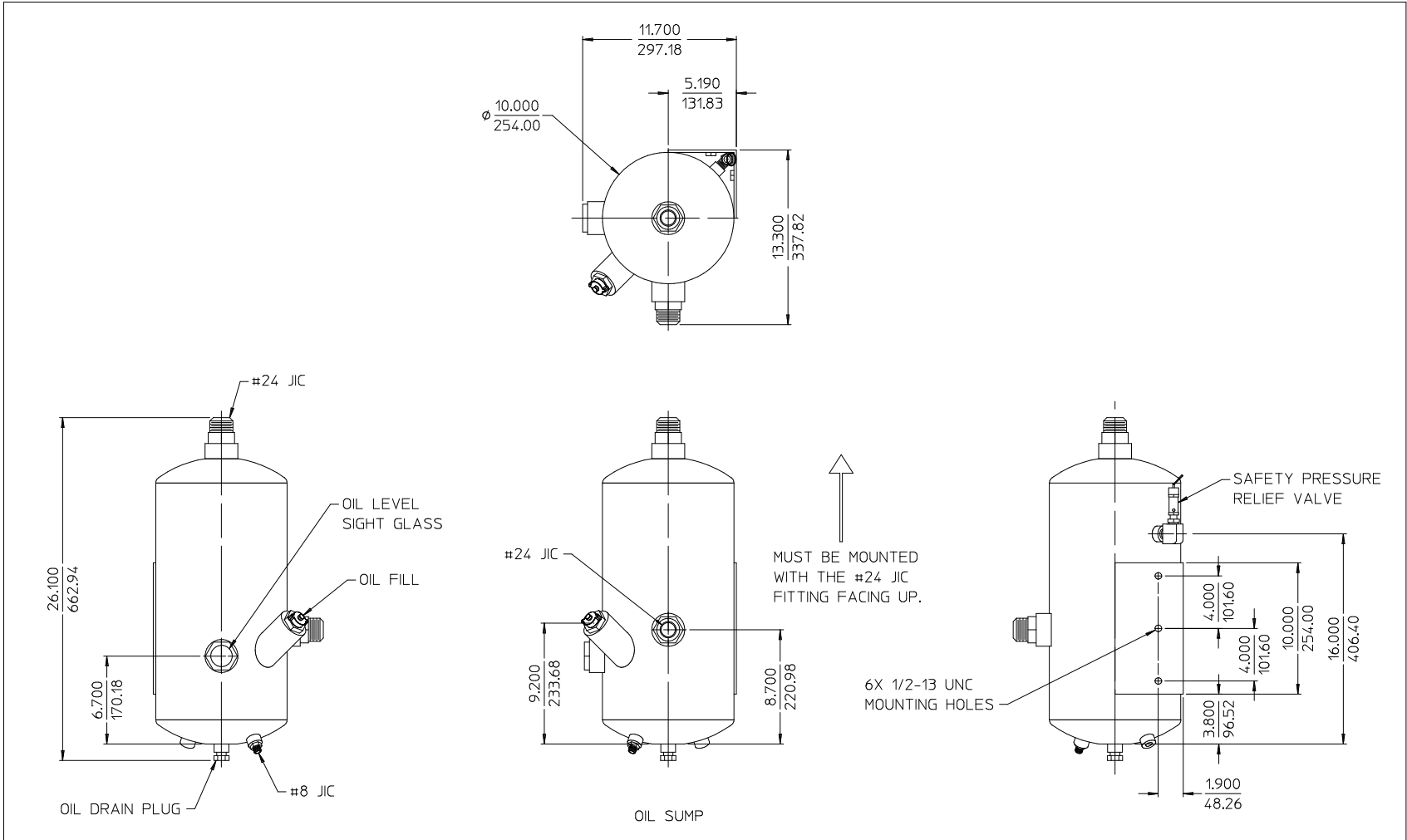
ELECTRICAL AND PLUMBING SCHEMATICS



ITEMS SHIPPED LOOSE

- NOTES:
1. SEE PAGE 7 FOR PLUMBING OF ALL OIL, WATER, AND AIR LINES.
 2. SEE PAGE 9 FOR OIL SUMP DETAILS.

TC20 SERIES P.T.O.
DPL83001
WATEROUS COMPANY
SOUTH ST. PAUL, MN 55075
PAGE 8 OF 9



NOTES:

1. SEE PAGE 7 FOR PLUMBING OF ALL OIL, WATER, AND AIR LINES.
2. OIL LEVEL IN OIL RESERVOIR SHOULD BE AT LOWER ELEVATION THAN COMPRESSOR. IF OIL RESERVOIR MUST BE PLACED HIGHER THAN COMPRESSOR, CONTACT PNEUMAX FOR ADDITIONAL PARTS THAT MUST BE INSTALLED.

ITEMS SHIPPED LOOSE

ALL DIMENSIONS SHOWN AS INCH/MILLIMETER
 (INCH / MILLIMETER)

TC20 SERIES P.T.O.
 DPL83001
 WATEROUS COMPANY
 SOUTH ST. PAUL, MN 55075
 PAGE 9 OF 9