



Document Number	Issue Date	Rev. Date
DPL83003	04/14/09	10/27/15

## CXC20 Series Fire Pump with Eclipse ES™ CAFS Dimensional Drawings

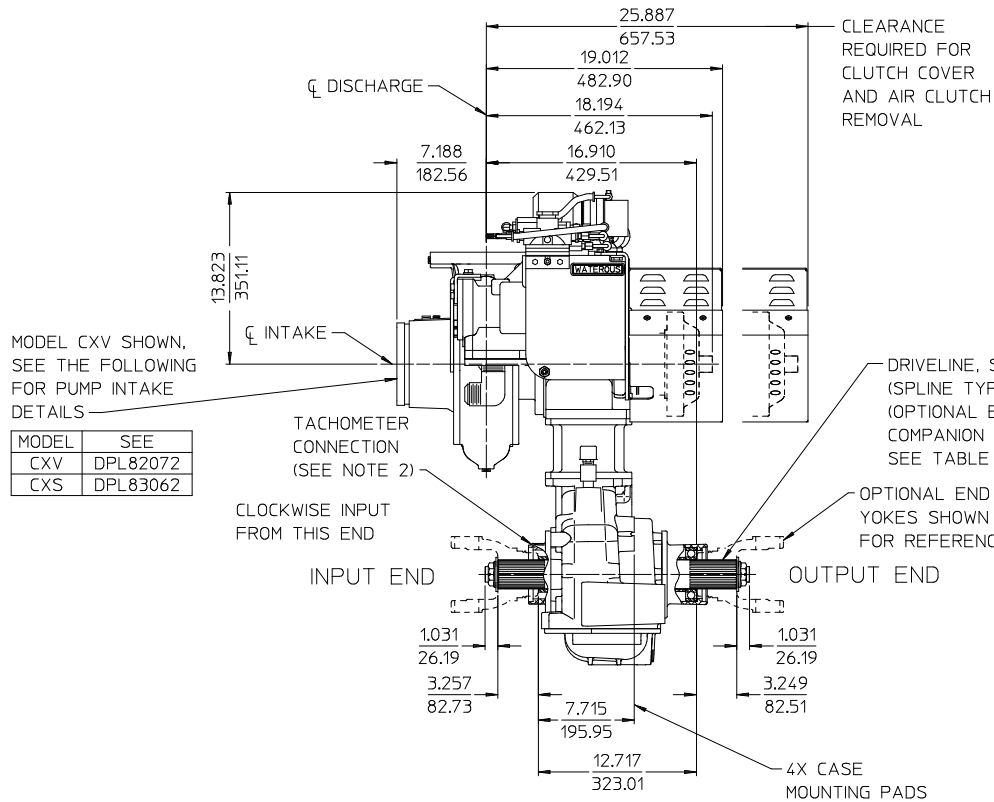
Item	See Page	
	Input and Output Shaft	Input Shaft Only
Pump Models	2	3
Ratio and Drop Dimensions	4	4
Compressor	Electrical and Plumbing Schematics	5
	Components Shipped Loose	6, 7
CX Pump Intake and Discharge Options	See DPL82072 (CXV Models) DPL83062 (CXS Models)	
C20 Transmission Options		

**Note: When ordering furnish the following information:**

1. Pump Models (See pages 2 or 3)
2. Drive to Driven Ratio (See page 4)
3. Discharge Position: Discharge Flange Facing Up is the only available position
4. Optional Discharge Fitting See DPL82072 or DPL83062.  
Note that the optional discharge manifold may only be mounted perpendicular to the pump intake.
5. Assembly Number: 83003

TABLE 1 - AVAILABLE DRIVELINE / MODELS

DRIVELINE			OPTIONAL END YOKES AND COMPANION FLANGES AVAILABLE FROM WATEROUS				PUMP MODELS
TYPE	SIZE	SPLINE	SPICER SERIES	YOKE		COMPANION FLANGE	
				PART NUMBER	CROSS AND BEARING KIT		
EXTRA HEAVY DUTY	2.35 INCH	2.350-46T INVOLUTE	1480/1610	--	--	V 3719	CXVC20C CXVC20D CXVC20E CXVC20F CXSC20C CXSC20D CXSC20E CXSC20F
			1650/1710	--	--	V 3619	
			1710	V 2837	V 2839	--	
			1810	V 2838	V 2840	--	
			SPL140	V 3388	V 3389	--	



MODEL CXV SHOWN. SEE THE FOLLOWING FOR PUMP INTAKE DETAILS

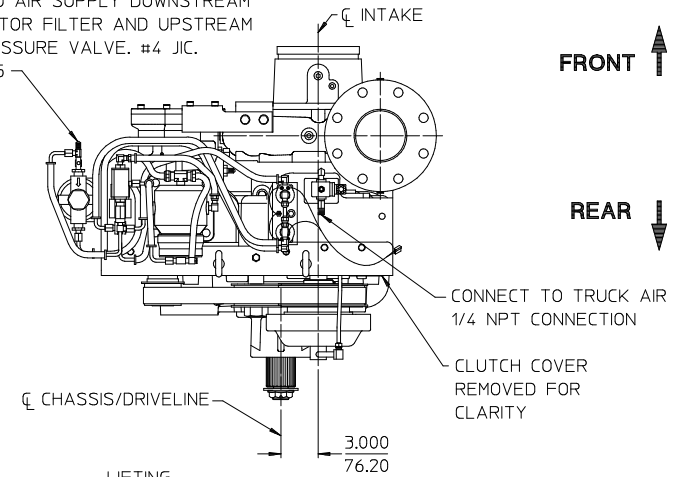
MODEL	SEE
CXV	DPL82072
CXS	DPL83062

- NOTES:
1. SEE TABLE 2 ON PAGE 4 FOR AVAILABLE RATIOS.
  2. SEE DRAWING DPL82994 FOR ADDITIONAL DETAILS OF C20 SERIES TRANSMISSION.
  3. SEE DRAWING DPL82086 FOR SHIFT UNIT DETAILS

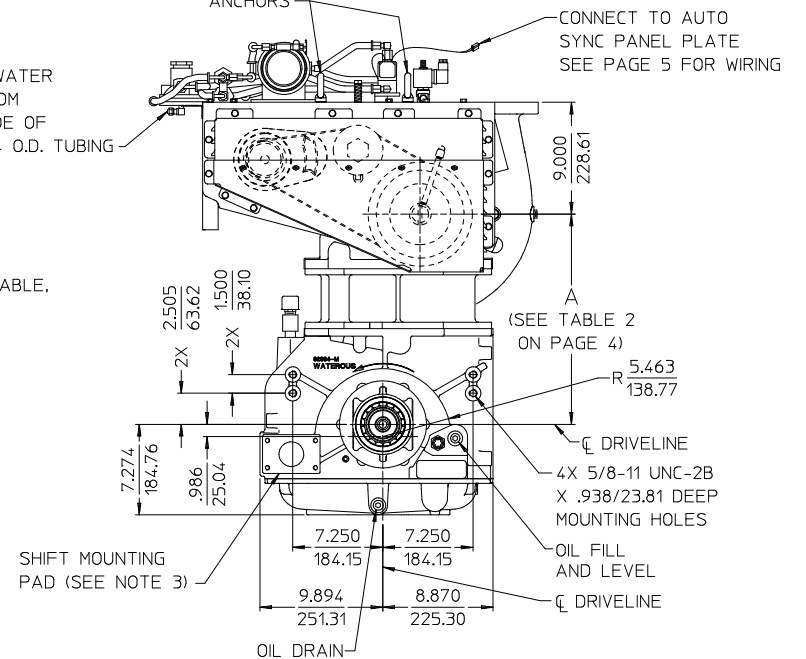
**CXC20 SERIES WITH ECLIPSE ES CAFS**

INPUT AND OUTPUT SHAFT  
CLOCKWISE INPUT, MODEL CXVC20E, 2.27 RATIO SHOWN  
BLANK DISCHARGE SHOWN

CONNECT TO AIR SUPPLY DOWNSTREAM OF SEPARATOR FILTER AND UPSTREAM OF MIN. PRESSURE VALVE. #4 JIC. SEE PAGE 5



CONNECT TO WATER PRESSURE FROM DISCHARGE SIDE OF FIRE PUMP. 1/4 O.D. TUBING



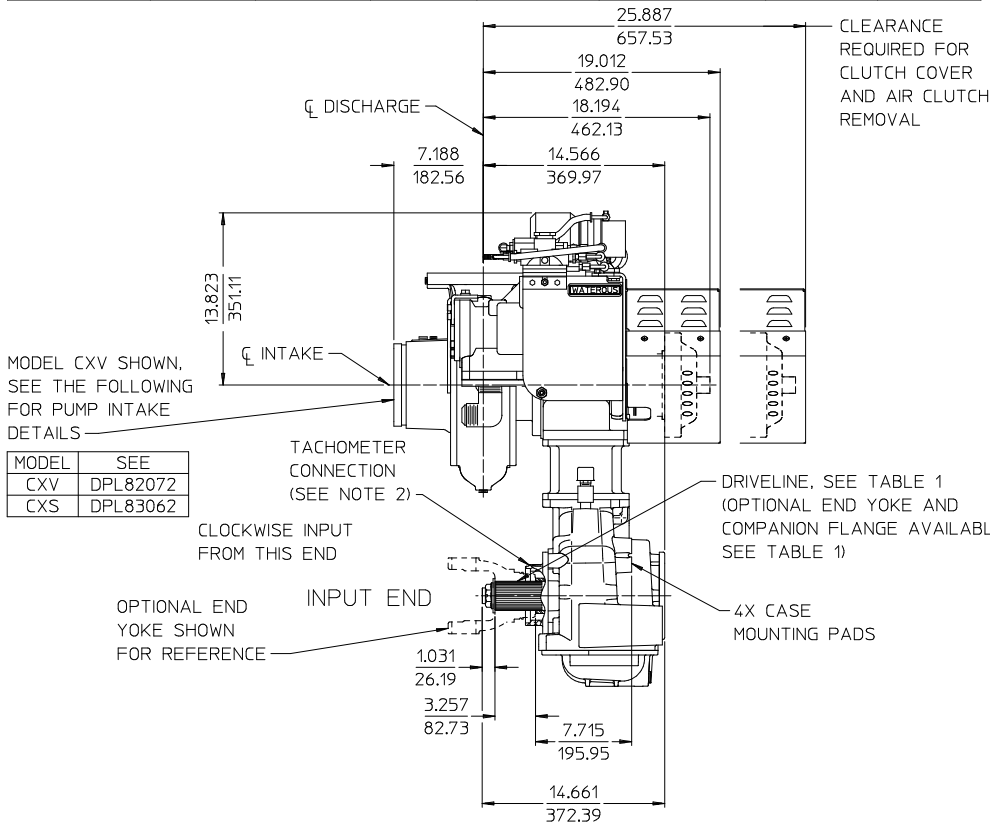
ALL DIMENSIONS SHOWN AS INCH/MILLIMETER

( INCH / MILLIMETER )

**CXC20 SERIES FIRE PUMP  
DPL83003**

**WATEROUS COMPANY  
SOUTH ST. PAUL, MN 55075**

TABLE 1 - AVAILABLE DRIVELINE / MODELS						
DRIVELINE			OPTIONAL END YOKES AND COMPANION FLANGES AVAILABLE FROM WATEROUS			
TYPE	SIZE	SPLINE	SPICER SERIES	YOKE		COMPANION FLANGE
				PART NUMBER	CROSS AND BEARING KIT	
EXTRA HEAVY DUTY	2.35 INCH	2.350-46T INVOLUTE	1480/1610	--	--	V 3719
			1650/1710	--	--	V 3619
			1710	V 2837	V 2839	--
			1810	V 2838	V 2840	--
			SPL140	V 3388	V 3389	--

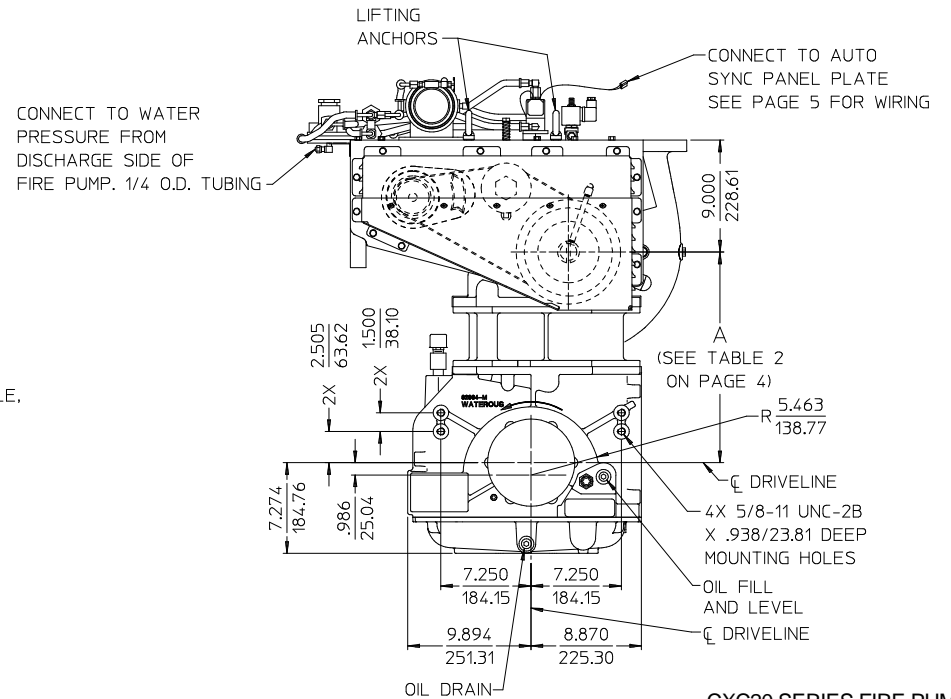
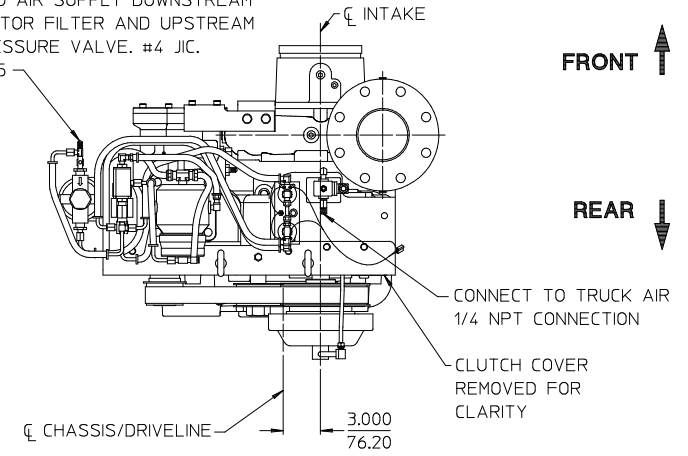


- NOTES:
- SEE TABLE 2 ON PAGE 4 FOR AVAILABLE RATIOS.
  - SEE DRAWING DPL82994 FOR ADDITIONAL DETAILS OF C20 SERIES TRANSMISSION.

**CXC20 SERIES WITH ECLIPSE ES CAFS**

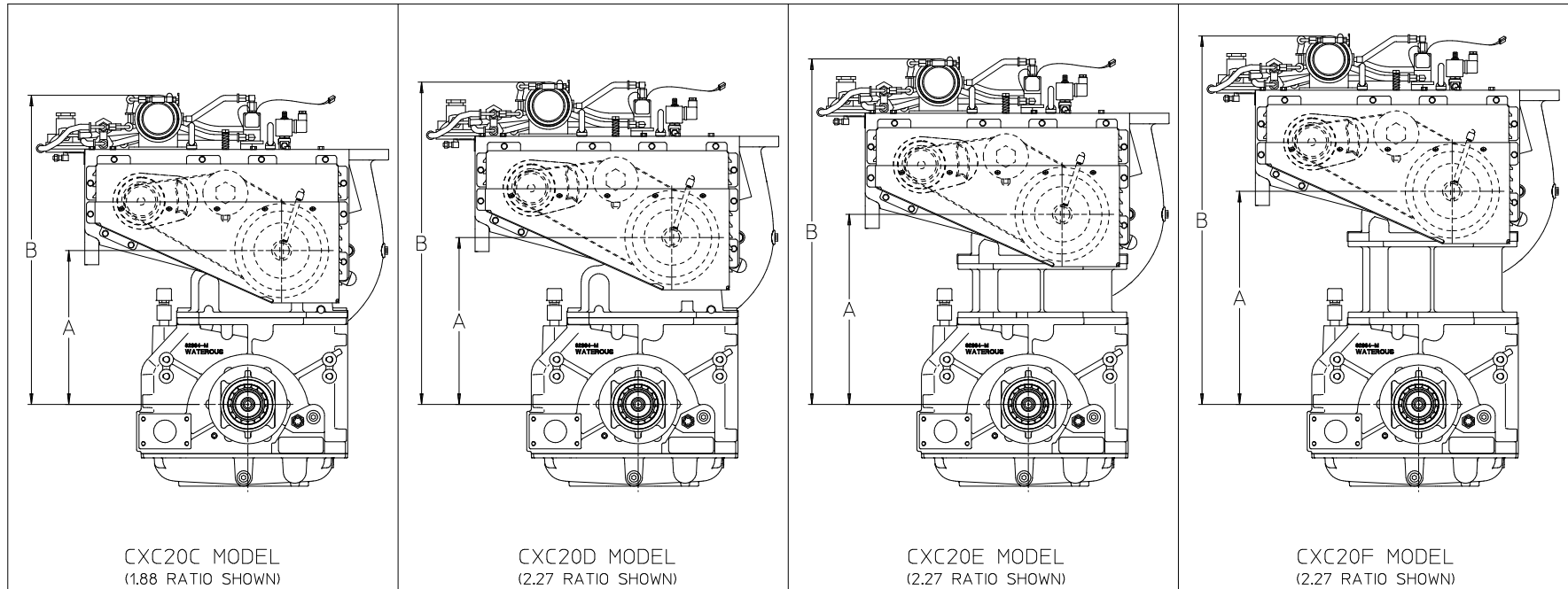
INPUT SHAFT ONLY  
CLOCKWISE INPUT, MODEL CXVC20E, 2.27 RATIO SHOWN  
BLANK DISCHARGE SHOWN

CONNECT TO AIR SUPPLY DOWNSTREAM OF SEPARATOR FILTER AND UPSTREAM OF MIN. PRESSURE VALVE. #4 JIC.  
SEE PAGE 5



**CXC20 SERIES FIRE PUMP**  
DPL83003  
WATEROUS COMPANY  
SOUTH ST. PAUL, MN 55075  
PAGE 3 OF 7

ALL DIMENSIONS SHOWN AS INCH/MILLIMETER  
(INCH / MILLIMETER)



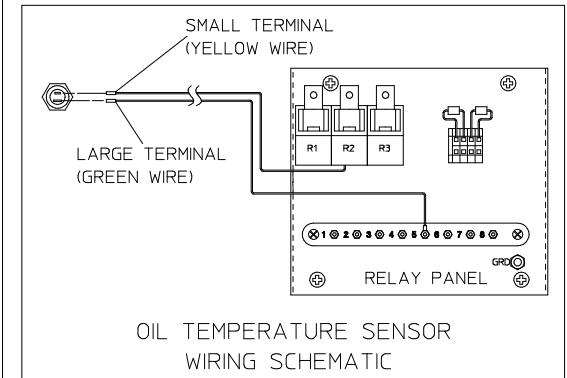
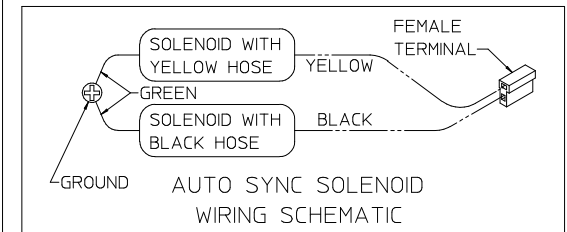
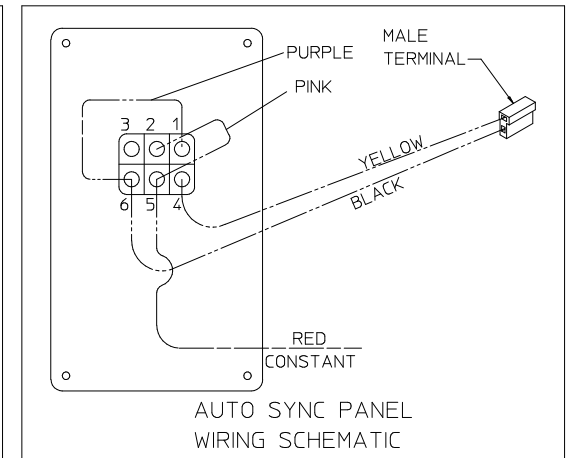
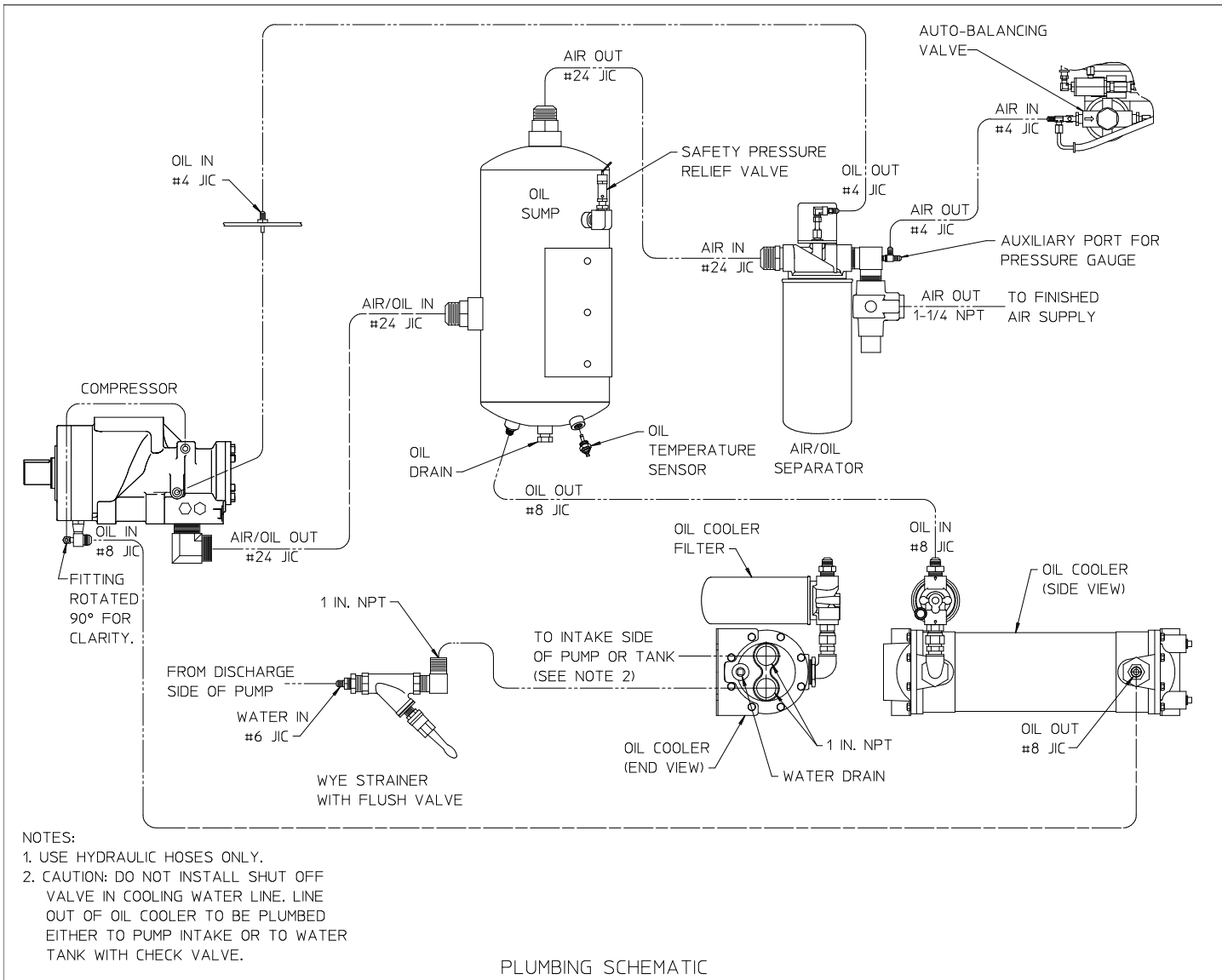
**TABLE 2 - AVAILABLE RATIOS**

DRIVE TO DRIVEN RATIO	CXC20C		CXC20D		CXC20E		CXC20F	
	DIMENSION A	DIMENSION B	DIMENSION A	DIMENSION B	DIMENSION A	DIMENSION B	DIMENSION A	DIMENSION B
1.27	14.312/363.52	28.135/714.63	14.825/376.56	28.648/727.67	16.861/428.27	30.684/779.38	18.892/479.86	32.715/830.97
1.41	13.899/353.03	27.722/704.14	14.931/379.25	28.754/730.36	16.971/431.06	30.794/782.17	19.002/482.65	32.825/833.76
1.48	13.878/352.50	27.701/703.61	14.907/378.64	28.730/729.75	16.951/430.56	30.774/781.67	18.981/482.12	32.811/833.23
1.58	13.756/349.40	27.579/700.51	14.788/375.62	28.611/726.73	16.830/427.48	30.653/778.59	18.861/479.07	32.684/830.18
1.69	13.839/351.51	27.662/702.62	14.876/377.85	28.699/728.96	16.923/429.84	30.746/780.95	18.961/481.61	32.784/832.72
1.79	14.045/356.74	27.868/707.85	15.072/382.83	28.895/733.94	17.127/435.03	30.95/786.14	19.168/486.87	32.991/837.98
1.88	13.690/347.73	27.513/698.84	14.717/373.81	28.540/724.92	16.773/426.03	30.59/777.14	18.809/477.75	32.632/828.86
1.97	13.870/352.30	27.693/703.41	14.912/378.76	28.735/729.87	16.970/431.04	30.793/782.15	19.012/482.90	32.835/834.01
2.03	13.984/355.19	27.807/706.30	15.028/381.71	28.851/732.82	17.086/433.98	30.909/785.09	19.132/485.95	32.955/837.06
2.27	13.811/350.80	27.634/701.91	14.856/377.34	28.679/728.45	16.920/429.77	30.743/780.88	18.971/481.86	32.794/832.97
2.46	14.042/356.67	27.865/707.78	15.087/383.21	28.910/734.32	17.154/435.71	30.977/786.82	19.205/487.81	33.028/838.92
2.73	14.115/358.52	27.938/709.63	15.173/385.39	28.996/736.50	16.738/425.15	30.561/776.25	18.808/477.72	32.631/828.83

ALL DIMENSIONS SHOWN AS INCH/MILLIMETER  
 ( INCH / MILLIMETER )

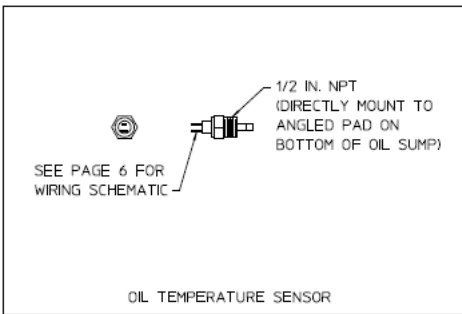
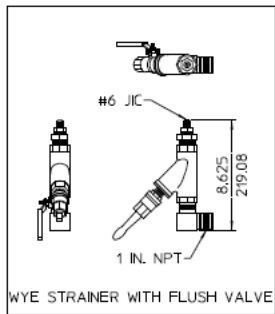
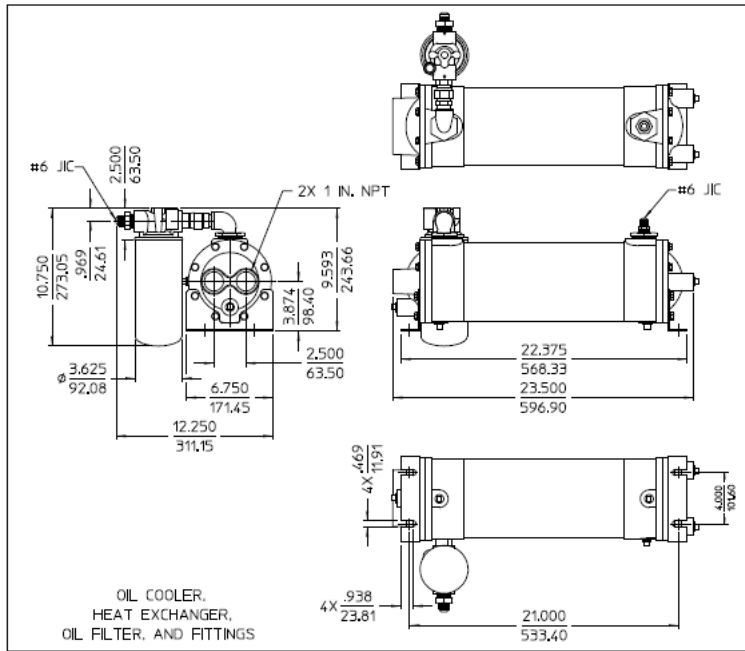
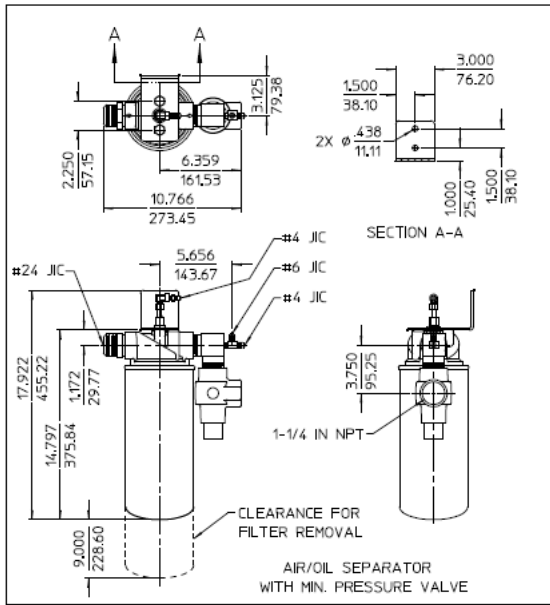
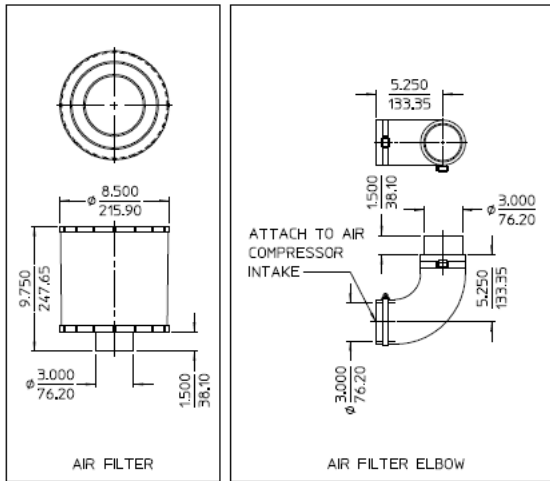
**RATIO AND DROP DIMENSIONS**

CXC20 SERIES FIRE PUMP  
 DPL83003  
 WATEROUS COMPANY  
 SOUTH ST. PAUL, MN 55075  
 PAGE 4 OF 7



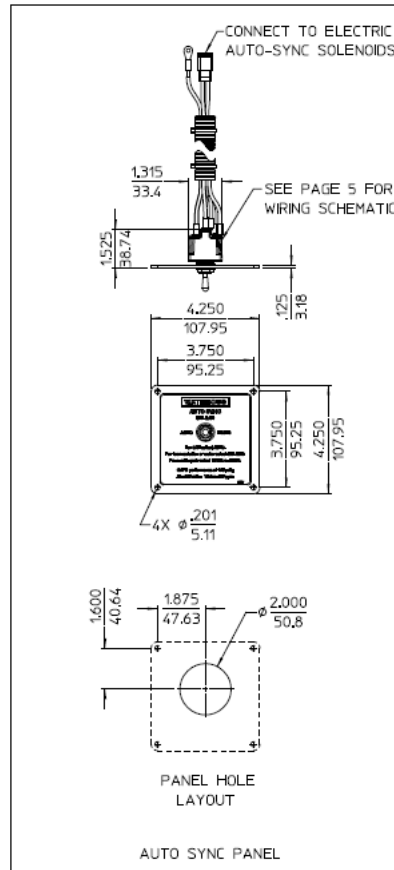
ALL DIMENSIONS SHOWN AS INCH/MILLIMETER  
(INCH / MILLIMETER)

**COMPRESSOR  
ELECTRICAL AND PLUMBING SCHEMATICS**

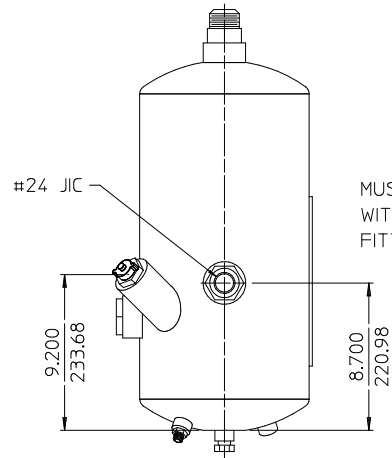
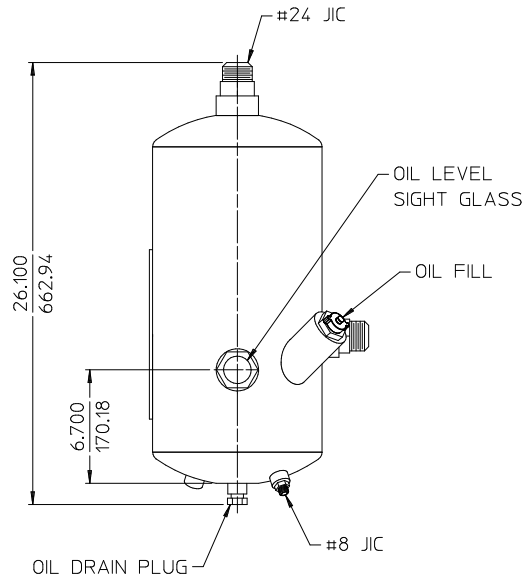
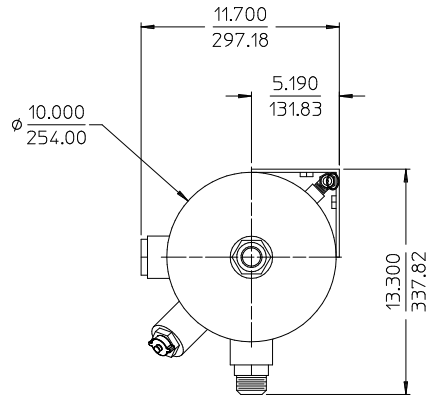


**COMPRESSOR COMPONENTS SHIPPED LOOSE**

- NOTES:
1. SEE PAGE 5 FOR PLUMBING OF ALL OIL, WATER, AND AIR LINES.
  2. SEE PAGE 7 FOR OIL SUMP DETAILS.

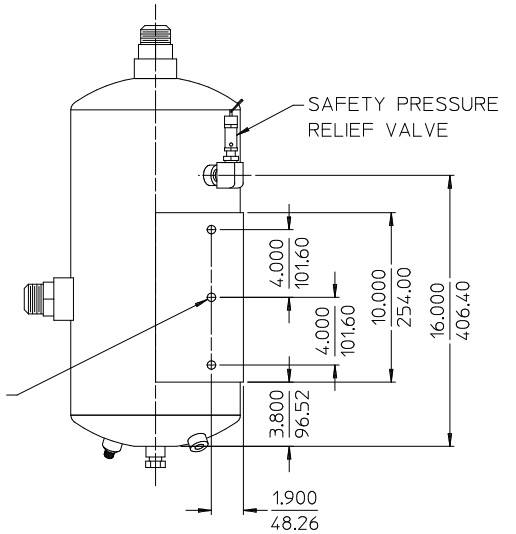


ALL DIMENSIONS SHOWN AS INCH/MILLIMETER  
(INCH / MILLIMETER)



MUST BE MOUNTED WITH THE #24 JIC FITTING FACING UP.

6X 1/2-13 UNC MOUNTING HOLES



OIL SUMP

NOTES:

1. SEE PAGE 5 FOR PLUMBING OF ALL OIL, WATER, AND AIR LINES.
2. OIL LEVEL IN OIL RESERVOIR SHOULD BE AT LOWER ELEVATION THAN COMPRESSOR. IF OIL RESERVOIR MUST BE PLACED HIGHER THAN COMPRESSOR, CONTACT PNEUMAX FOR ADDITIONAL PARTS THAT MUST BE INSTALLED.

**COMPRESSOR**  
**COMPONENTS SHIPPED LOOSE**

ALL DIMENSIONS SHOWN AS INCH/MILLIMETER  
( $\frac{\text{INCH}}{\text{MILLIMETER}}$ )

**CXC20 SERIES FIRE PUMP**  
**DPL83003**  
**WATEROUS COMPANY**  
**SOUTH ST. PAUL, MN 55075**  
PAGE 7 OF 7