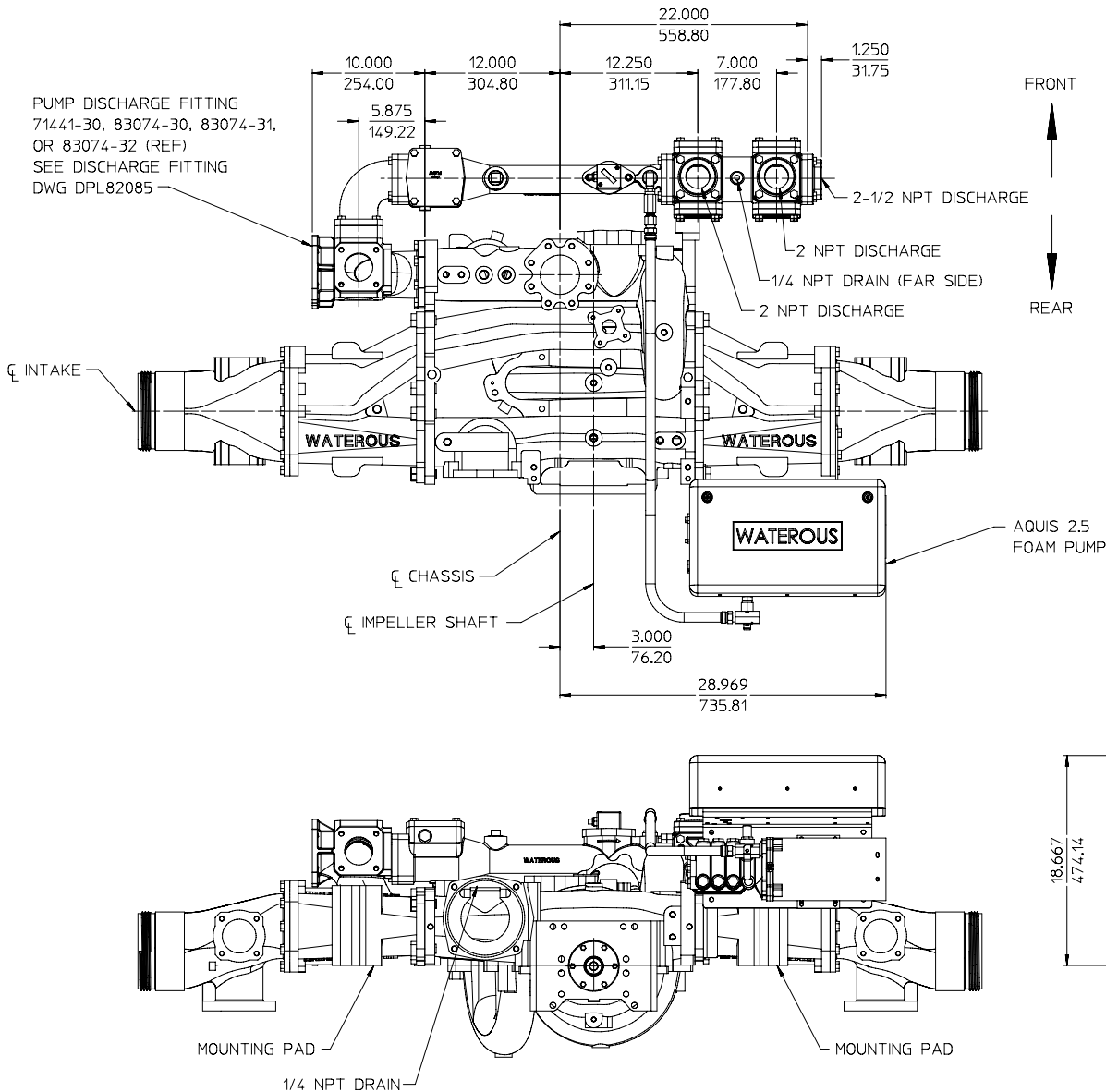




Document Number	Issue Date	Rev. Date
DPL 83079	10/30/09	12/08/11

Dimensional Drawings for Foam Manager System with Aquis™ 2.5

Configuration	Includes	Manifold		Pump Discharge Fitting	See Page	Available on Pump Models	
		Discharge Position	Mounting on Pump				
Complete System Mounted on Pump	500 GPM Foam Manifold and Aquis 2.5 Foam Pump	Right Hand (Right Side of Pump)	On the Front	71441-30, 83074-30, 83074-31, 83074-32	2	CM, CMU CS, CSU	
				71600-8A	3		
				81388-7A	4		
			Over the Top	71441-30, 83074-30, 83074-31, 83074-32	5		
				71600-8A	6		
				81388-7A	7		
		Left Hand (Left Side of Pump)	On the Front	71441-30, 83074-30, 83074-31, 83074-32	8		
				71600-8A	9		
				81388-7A	10		
			Over the Top	71441-30, 83074-30, 83074-31, 83074-32	11		
				71600-8A	12		
				81388-7A	13		
		Items Shipped Loose					14
		Manifold only Mounted on Pump, Foam Pump Separately Mounted	500 GPM Foam Manifold and Aquis 2.5 Foam Pump (To be Added Later)	Right Hand (Right Side of Pump)	On the Front		71441-30, 83074-30, 83074-31, 83074-32
71600-8A	16						
81388-7A	17						
Over the Top	71441-30, 83074-30, 83074-31, 83074-32				18		
	71600-8A				19		
	81388-7A				20		
On Front of Discharge Manifold				83167-1A, -1B, 1C	21		
Left Hand (Left Side of Pump)	On the Front			71441-30, 83074-30, 83074-31, 83074-32	22		
				71600-8A	23		
				81388-7A	24		
	Over the Top			71441-30, 83074-30, 83074-31, 83074-32	25		
				71600-8A	26		
				81388-7A	27		
Items Shipped Loose				28			
Optional Accessories					29		
Tank Level Switch Wiring					30		



THE FOLLOWING ITEMS SHIPPED LOOSE:

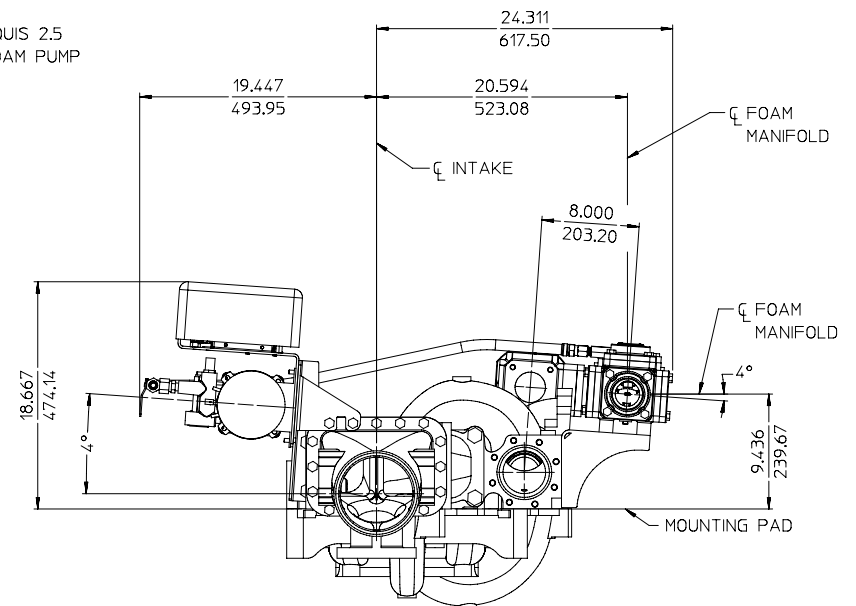
1. INSTRUCTION PLATE. (SEE DETAIL A ON PAGE 14).
2. OIT CONTROL MODULE (SEE DETAIL B ON PAGE 14).
3. INLET LINE STRAINER WITH NIPPLE (SEE DETAIL C ON PAGE 14).
4. OPTIONAL ACCESSORIES (SEE PAGE 29).

NOTE:

REAR INTAKE ADAPTER NOT AVAILABLE ON RIGHT SIDE.

ALL DIMENSIONS SHOWN
AS INCH/MILLIMETER

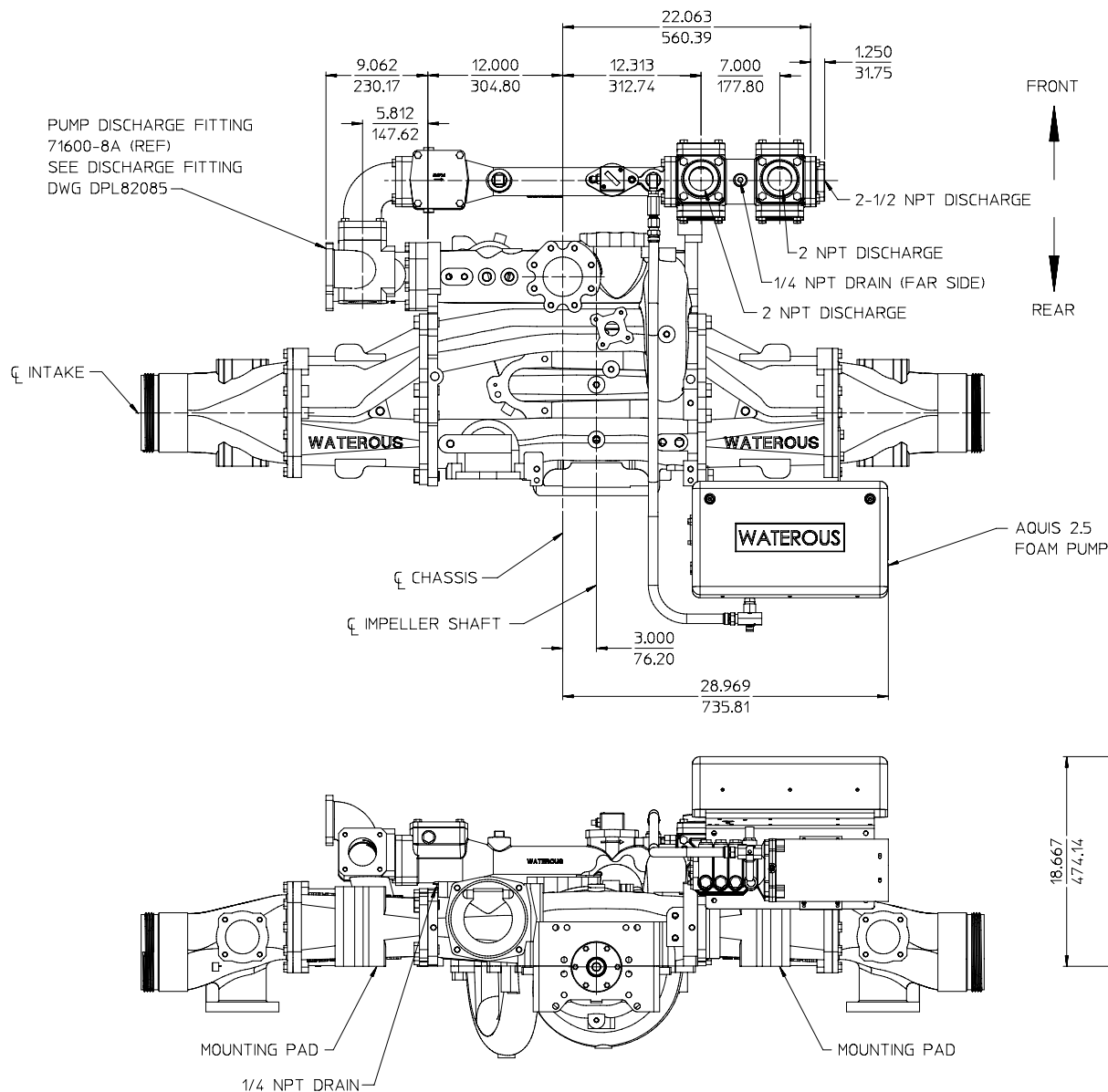
INCH
MILLIMETER



PUMP MOUNTED AQUIS 2.5 FOAM PUMP
500 GPM MANIFOLD, RIGHT HAND DISCHARGE ON THE FRONT OF PUMP
WITH 71441-30, 83074-30, 83074-31, OR 83074-32 PUMP DISCHARGE FITTING

AVAILABLE ON IRON PUMPS WITH 4° ANGLE COMPENSATED BODIES ONLY

FOAM MANAGER WITH AQUIS 2.5
DPL83079
WATEROUS COMPANY
SOUTH ST. PAUL, MN 55075
PAGE 2 OF 30



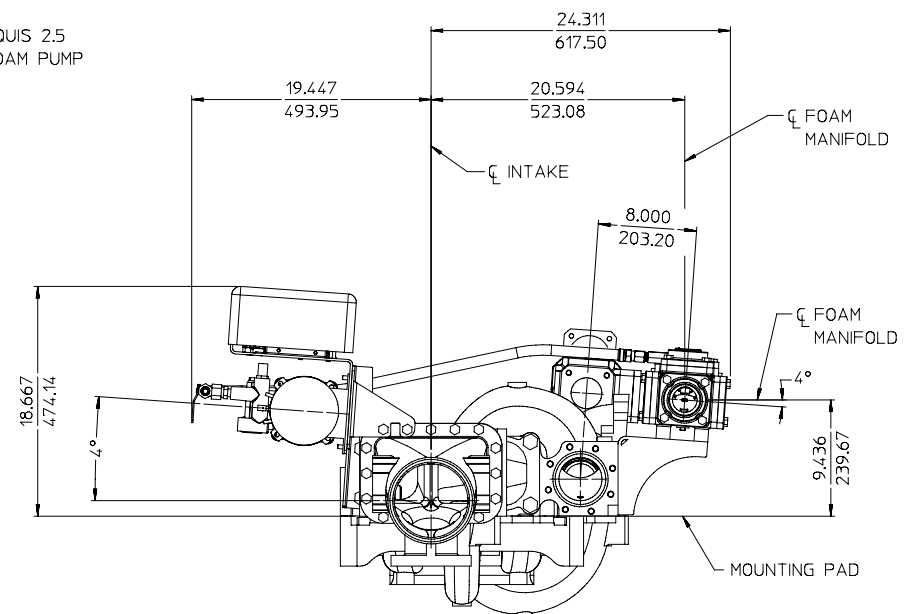
THE FOLLOWING ITEMS SHIPPED LOOSE:

1. INSTRUCTION PLATE. (SEE DETAIL A ON PAGE 14).
2. OIT CONTROL MODULE (SEE DETAIL B ON PAGE 14).
3. INLET LINE STRAINER WITH NIPPLE (SEE DETAIL C ON PAGE 14).
4. OPTIONAL ACCESSORIES (SEE PAGE 29).

NOTE:

REAR INTAKE ADAPTER NOT AVAILABLE ON RIGHT SIDE.

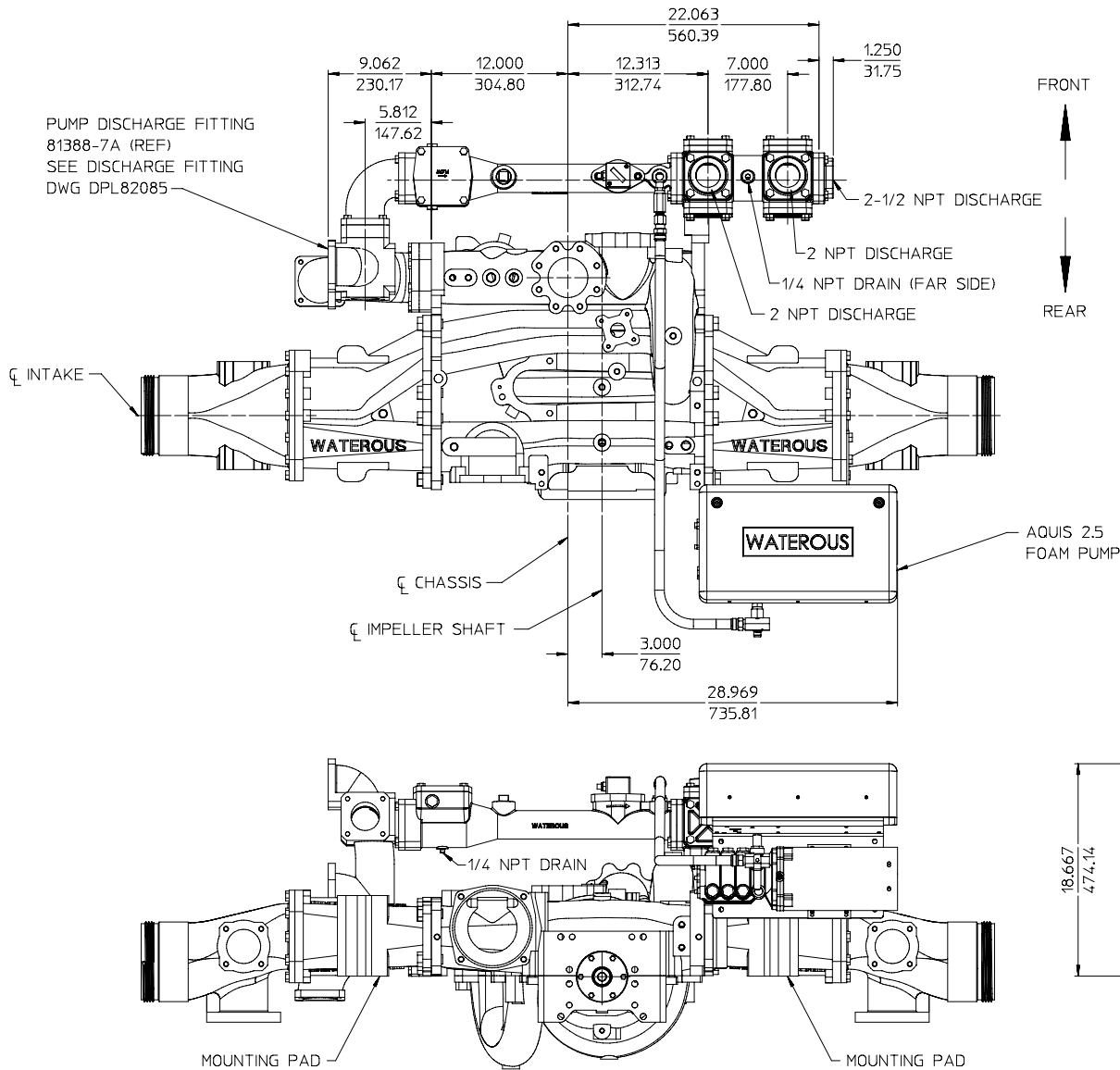
ALL DIMENSIONS SHOWN
AS INCH/MILLIMETER
($\frac{\text{INCH}}{\text{MILLIMETER}}$)



PUMP MOUNTED AQUIS 2.5 FOAM PUMP
500 GPM MANIFOLD, RIGHT HAND DISCHARGE ON THE FRONT OF PUMP
WITH 71600-8A PUMP DISCHARGE FITTING

AVAILABLE ON IRON PUMPS WITH 4° ANGLE COMPENSATED BODIES ONLY

FOAM MANAGER WITH AQUIS 2.5
DPL83079
WATEROUS COMPANY
SOUTH ST. PAUL, MN 55075
PAGE 3 OF 30



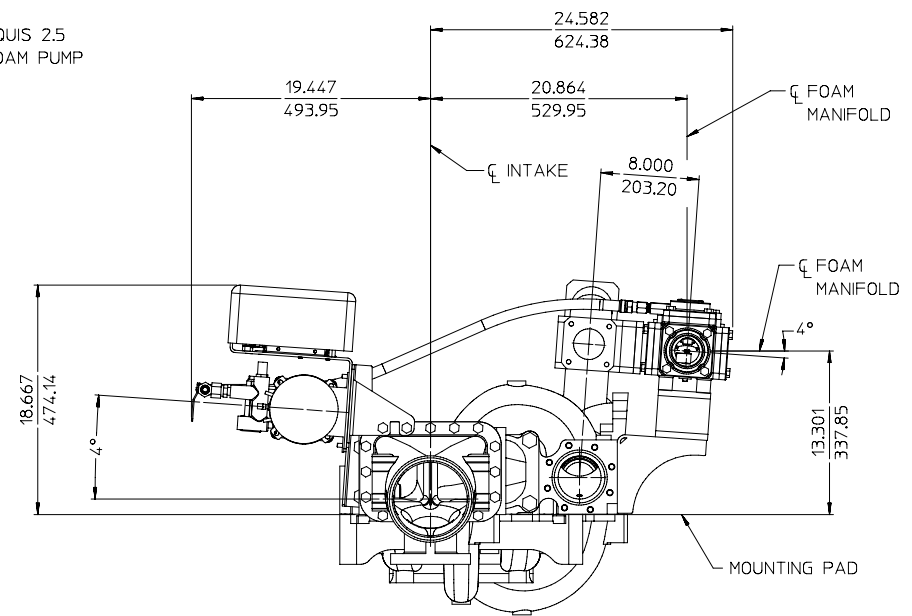
THE FOLLOWING ITEMS SHIPPED LOOSE:

1. INSTRUCTION PLATE. (SEE DETAIL A ON PAGE 14).
2. OIT CONTROL MODULE (SEE DETAIL B ON PAGE 14).
3. INLET LINE STRAINER WITH NIPPLE (SEE DETAIL C ON PAGE 14).
4. OPTIONAL ACCESSORIES (SEE PAGE 29).

NOTE:

REAR INTAKE ADAPTER NOT AVAILABLE ON RIGHT SIDE.

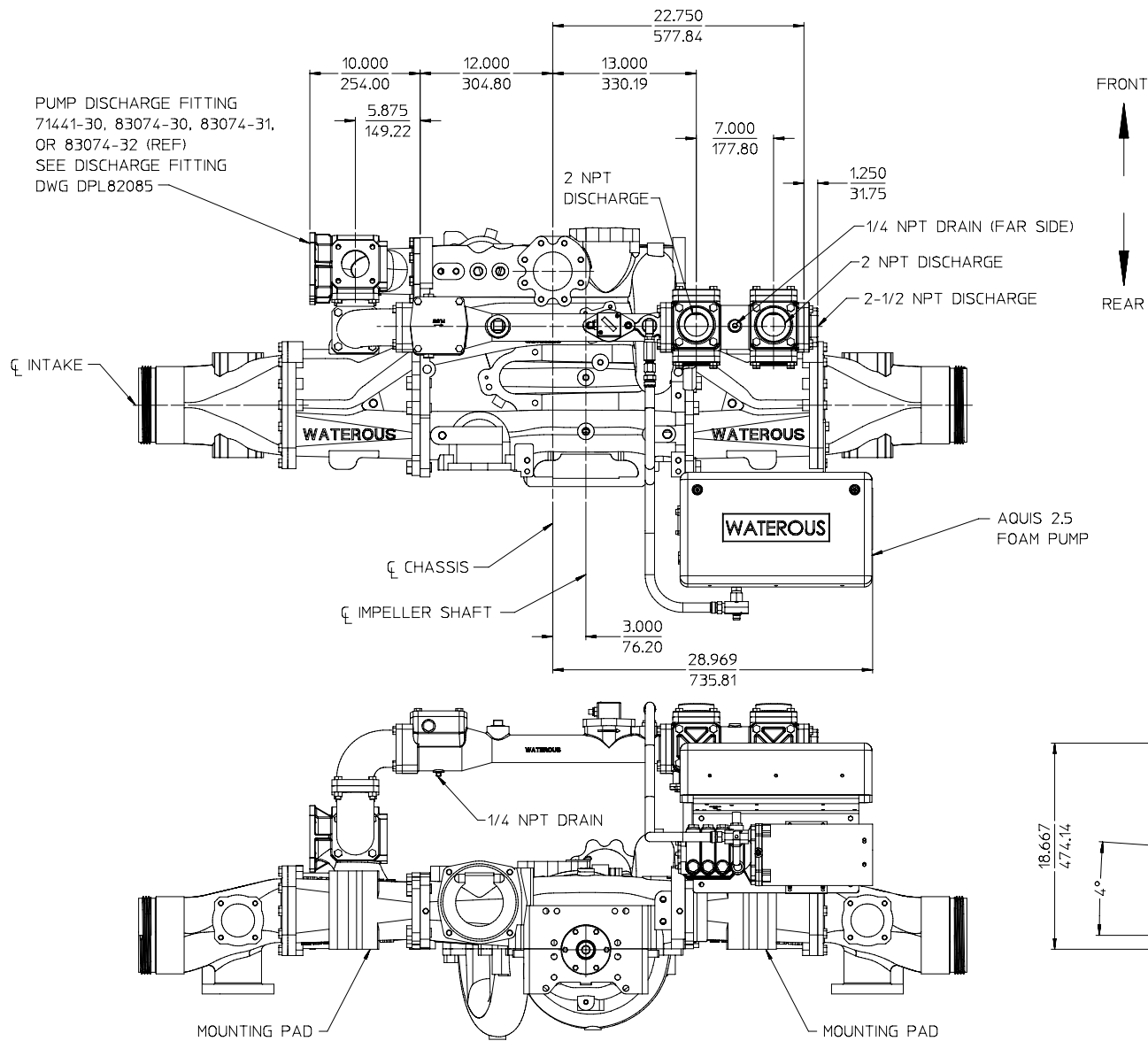
ALL DIMENSIONS SHOWN
AS INCH/MILLIMETER
(INCH
MILLIMETER)



PUMP MOUNTED AQUIS 2.5 FOAM PUMP
500 GPM MANIFOLD, RIGHT HAND DISCHARGE ON THE FRONT OF PUMP
WITH 81388-7A PUMP DISCHARGE FITTING

AVAILABLE ON IRON PUMPS WITH 4° ANGLE COMPENSATED BODIES ONLY

FOAM MANAGER WITH AQUIS 2.5
DPL83079
WATEROUS COMPANY
SOUTH ST. PAUL, MN 55075
PAGE 4 OF 30

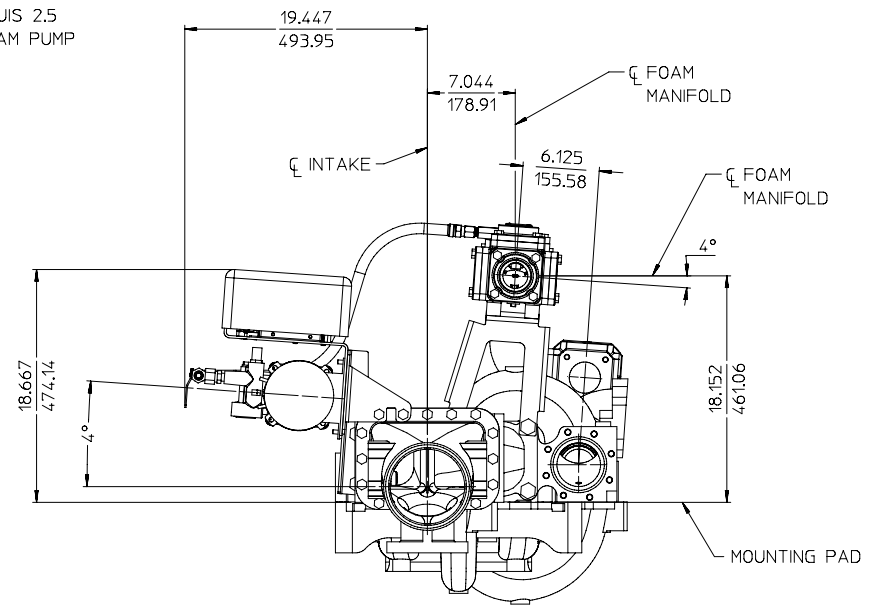


THE FOLLOWING ITEMS SHIPPED LOOSE:

1. INSTRUCTION PLATE. (SEE DETAIL A ON PAGE 14).
2. OIT CONTROL MODULE (SEE DETAIL B ON PAGE 14).
3. INLET LINE STRAINER WITH NIPPLE (SEE DETAIL C ON PAGE 14).
4. OPTIONAL ACCESSORIES (SEE PAGE 29).

NOTE:
REAR INTAKE ADAPTER NOT AVAILABLE ON RIGHT SIDE.

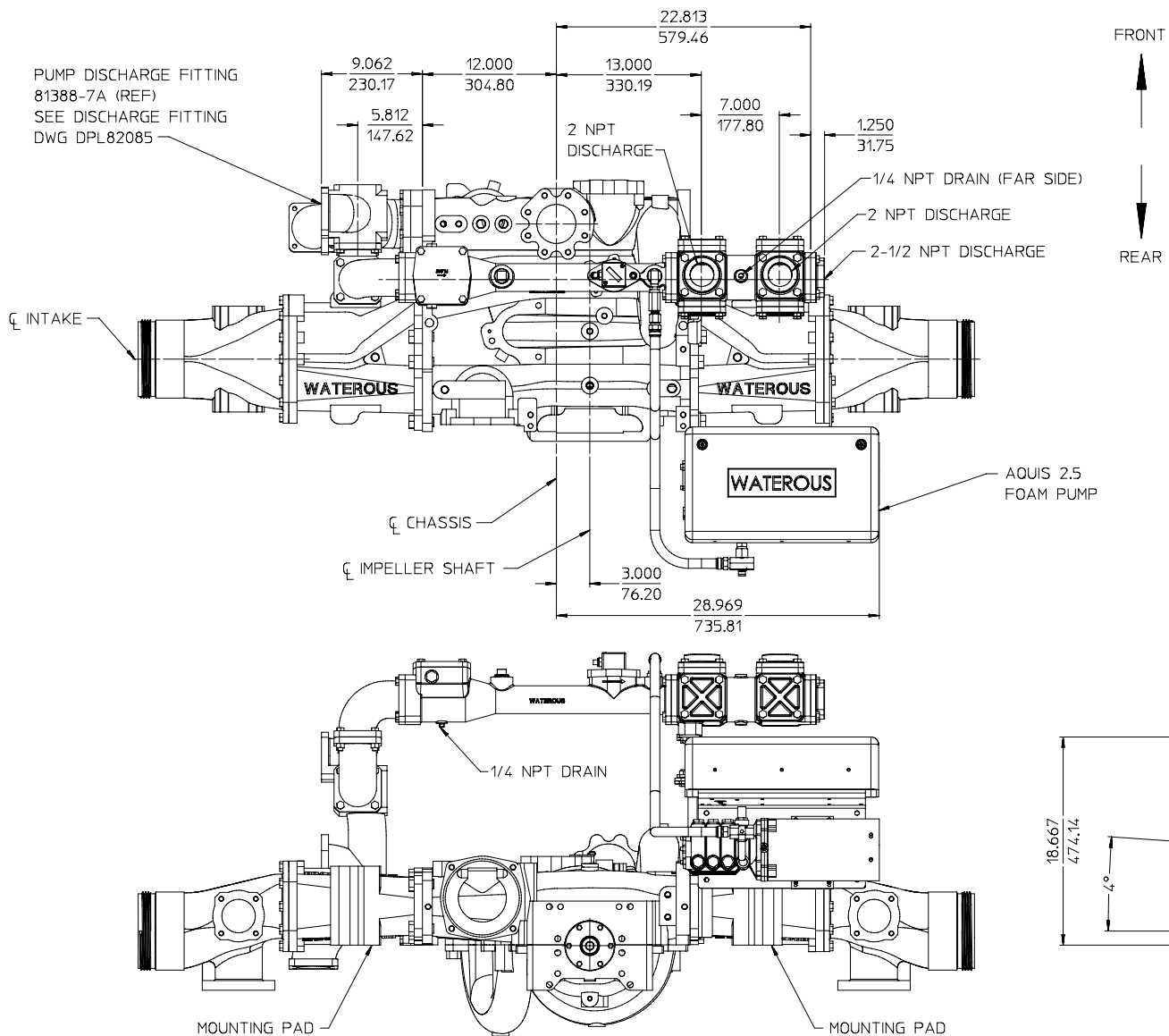
ALL DIMENSIONS SHOWN
AS INCH/MILLIMETER
(INCH
MILLIMETER)



PUMP MOUNTED AQUIS 2.5 FOAM PUMP
500 GPM MANIFOLD, RIGHT HAND DISCHARGE OVER THE TOP OF PUMP
WITH 71441-30, 83074-30, 83074-31, OR 83074-32 PUMP DISCHARGE FITTING

AVAILABLE ON IRON PUMPS WITH 4° ANGLE COMPENSATED BODIES ONLY

FOAM MANAGER WITH AQUIS 2.5
DPL83079
WATEROUS COMPANY
SOUTH ST. PAUL, MN 55075
PAGE 5 OF 30



FRONT



REAR

THE FOLLOWING ITEMS SHIPPED LOOSE:

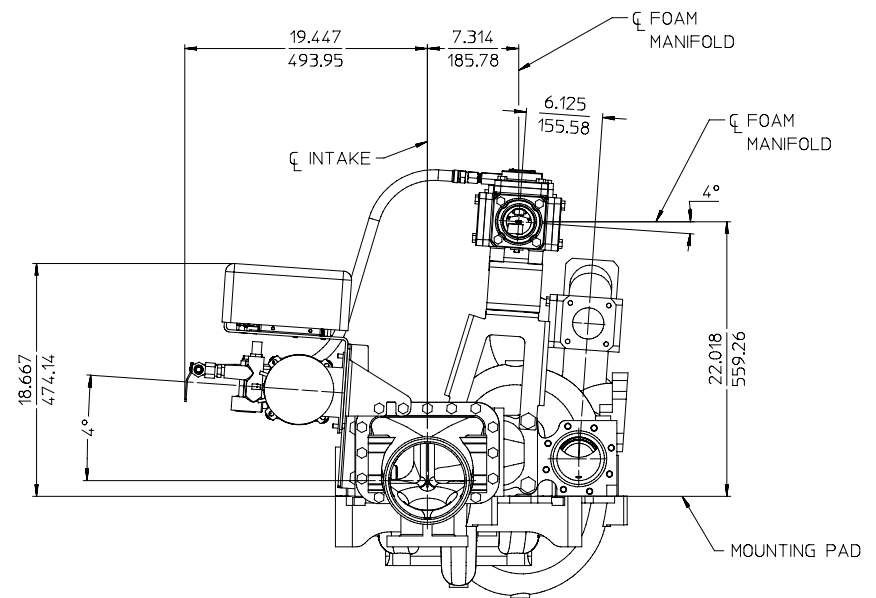
1. INSTRUCTION PLATE. (SEE DETAIL A ON PAGE 14).
2. OIT CONTROL MODULE (SEE DETAIL B ON PAGE 14).
3. INLET LINE STRAINER WITH NIPPLE (SEE DETAIL C ON PAGE 14).
4. OPTIONAL ACCESSORIES (SEE PAGE 29).

NOTE:

REAR INTAKE ADAPTER NOT AVAILABLE ON RIGHT SIDE.

ALL DIMENSIONS SHOWN
AS INCH/MILLIMETER

(INCH
MILLIMETER)



PUMP MOUNTED AQUIS 2.5 FOAM PUMP
500 GPM MANIFOLD, RIGHT HAND DISCHARGE OVER THE TOP OF PUMP
WITH 81388-7A PUMP DISCHARGE FITTING

AVAILABLE ON IRON PUMPS WITH 4° ANGLE COMPENSATED BODIES ONLY

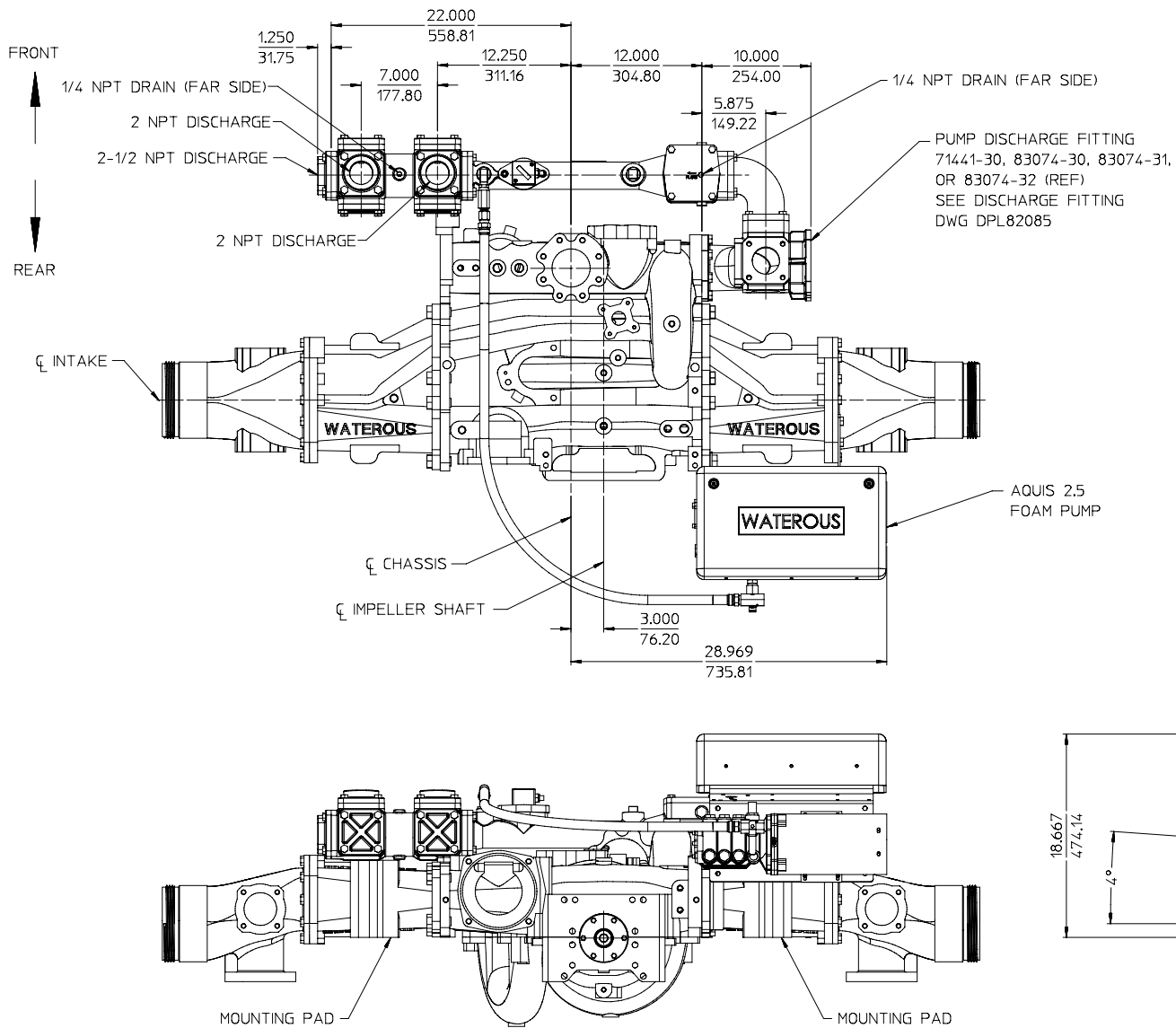
FOAM MANAGER WITH AQUIS 2.5

DPL83079

WATEROUS COMPANY

SOUTH ST. PAUL, MN 55075

PAGE 7 OF 30



THE FOLLOWING ITEMS SHIPPED LOOSE:

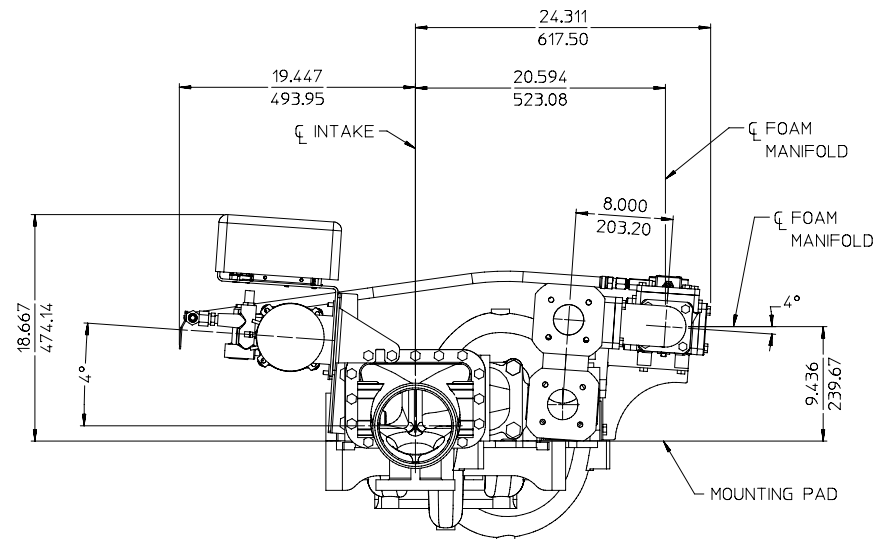
1. INSTRUCTION PLATE. (SEE DETAIL A ON PAGE 14).
2. OIT CONTROL MODULE (SEE DETAIL B ON PAGE 14).
3. INLET LINE STRAINER WITH NIPPLE (SEE DETAIL C ON PAGE 14).
4. OPTIONAL ACCESSORIES (SEE PAGE 29).

NOTE:

REAR INTAKE ADAPTER NOT AVAILABLE ON RIGHT SIDE.

ALL DIMENSIONS SHOWN
AS INCH/MILLIMETER

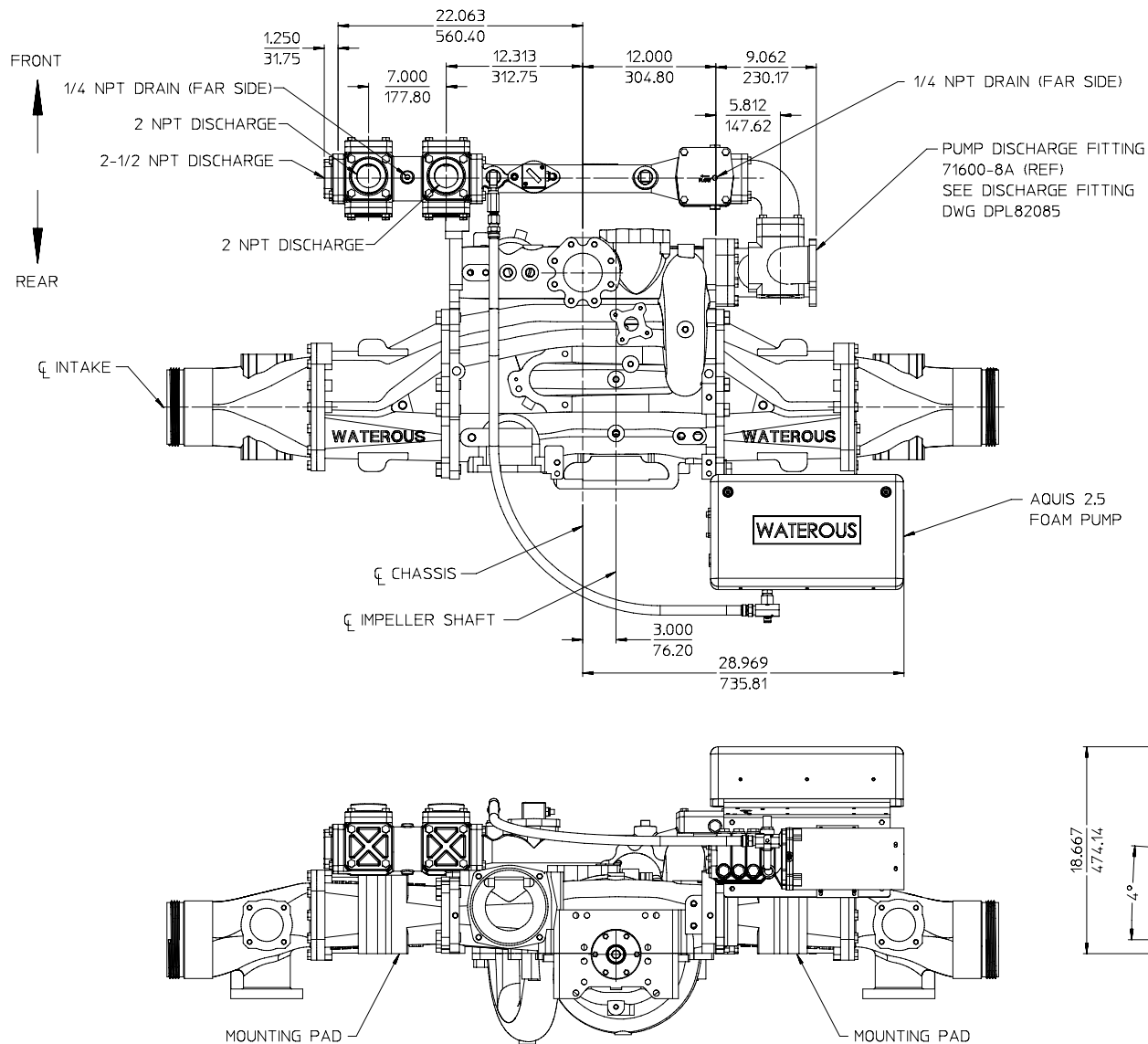
(INCH
MILLIMETER)



PUMP MOUNTED AQUIS 2.5 FOAM PUMP
500 GPM MANIFOLD, LEFT HAND DISCHARGE ON THE FRONT OF PUMP
WITH 71441-30, 83074-30, 83074-31, OR 83074-32 PUMP DISCHARGE FITTING

AVAILABLE ON IRON PUMPS WITH 4° ANGLE COMPENSATED BODIES ONLY

FOAM MANAGER WITH AQUIS 2.5
DPL83079
WATEROUS COMPANY
SOUTH ST. PAUL, MN 55075
PAGE 8 OF 30



THE FOLLOWING ITEMS SHIPPED LOOSE:

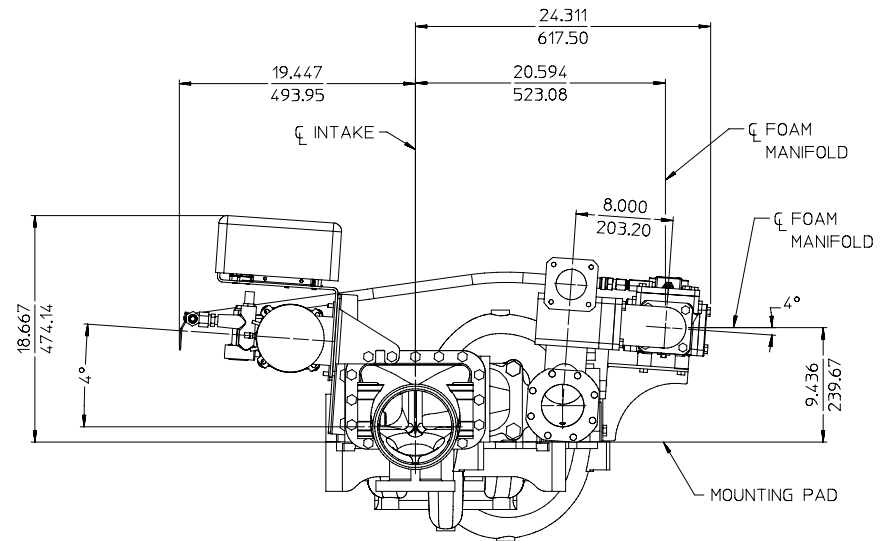
1. INSTRUCTION PLATE. (SEE DETAIL A ON PAGE 14).
2. OIT CONTROL MODULE (SEE DETAIL B ON PAGE 14).
3. INLET LINE STRAINER WITH NIPPLE (SEE DETAIL C ON PAGE 14).
4. OPTIONAL ACCESSORIES (SEE PAGE 29).

NOTE:

REAR INTAKE ADAPTER NOT AVAILABLE ON RIGHT SIDE.

ALL DIMENSIONS SHOWN
AS INCH/MILLIMETER

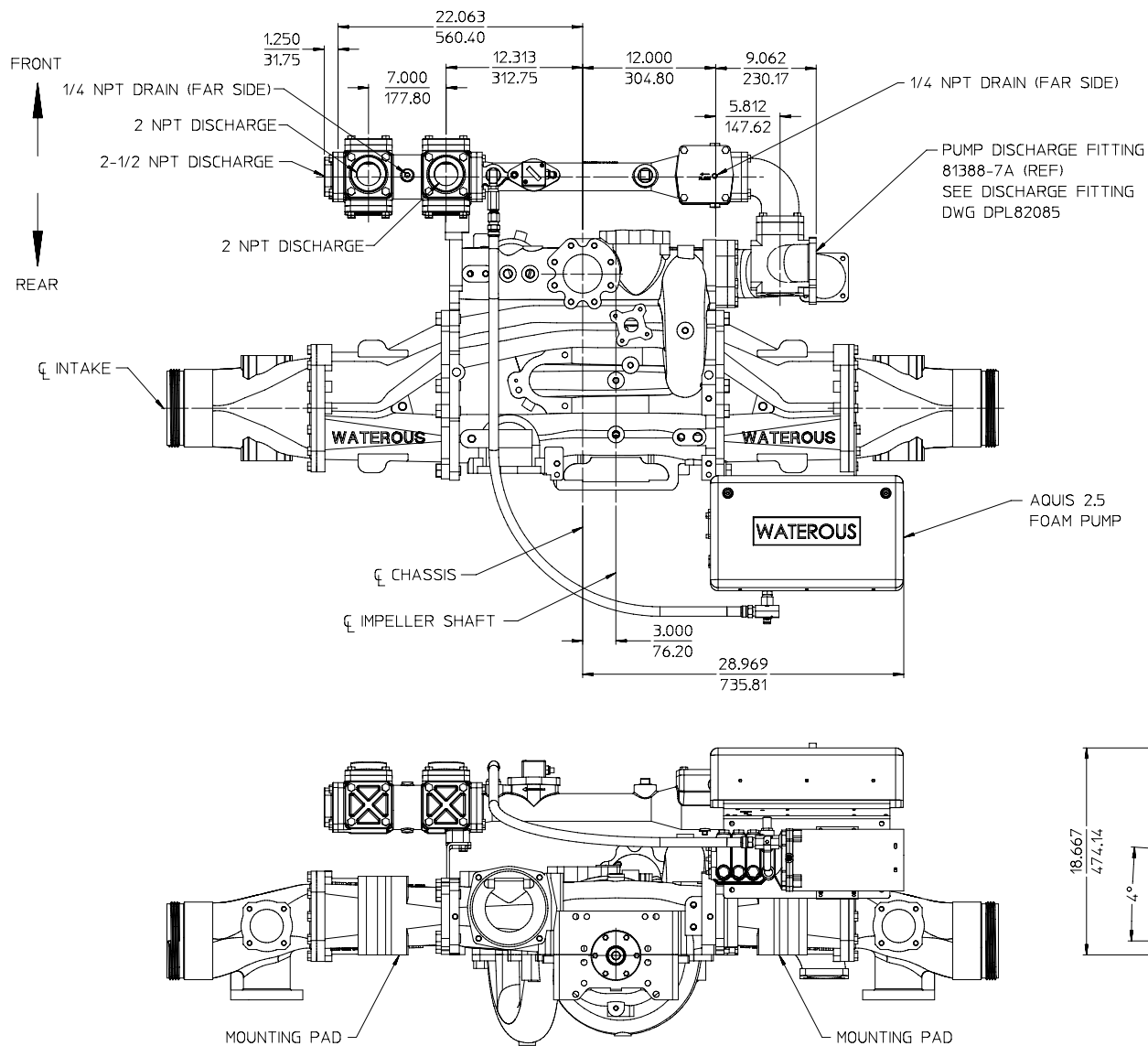
(INCH
MILLIMETER)



**PUMP MOUNTED AQUIS 2.5 FOAM PUMP
500 GPM MANIFOLD, LEFT HAND DISCHARGE ON THE FRONT OF PUMP
WITH 71600-8A PUMP DISCHARGE FITTING**

AVAILABLE ON IRON PUMPS WITH 4° ANGLE COMPENSATED BODIES ONLY

FOAM MANAGER WITH AQUIS 2.5
DPL83079
WATEROUS COMPANY
SOUTH ST. PAUL, MN 55075
PAGE 9 OF 30



THE FOLLOWING ITEMS SHIPPED LOOSE:

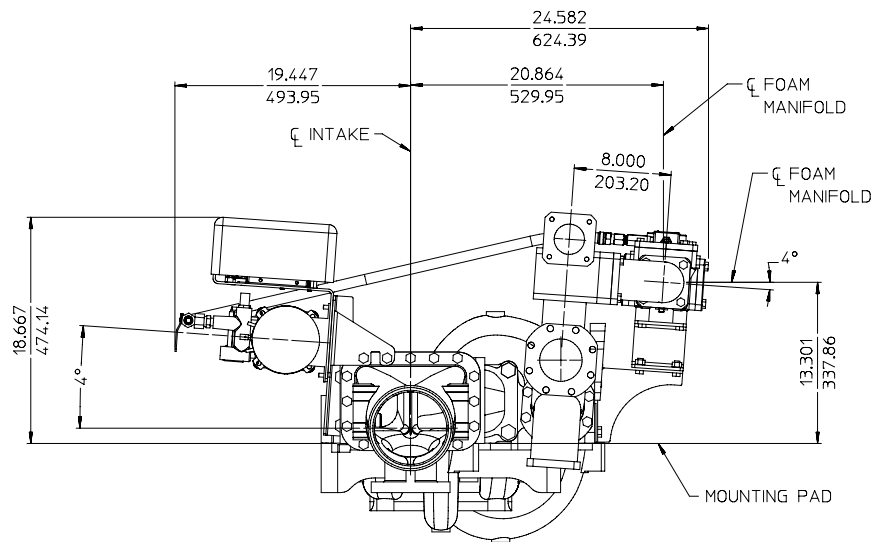
1. INSTRUCTION PLATE. (SEE DETAIL A ON PAGE 14).
2. OIT CONTROL MODULE (SEE DETAIL B ON PAGE 14).
3. INLET LINE STRAINER WITH NIPPLE (SEE DETAIL C ON PAGE 14).
4. OPTIONAL ACCESSORIES (SEE PAGE 29).

NOTE:

REAR INTAKE ADAPTER NOT AVAILABLE ON RIGHT SIDE.

ALL DIMENSIONS SHOWN
AS INCH/MILLIMETER

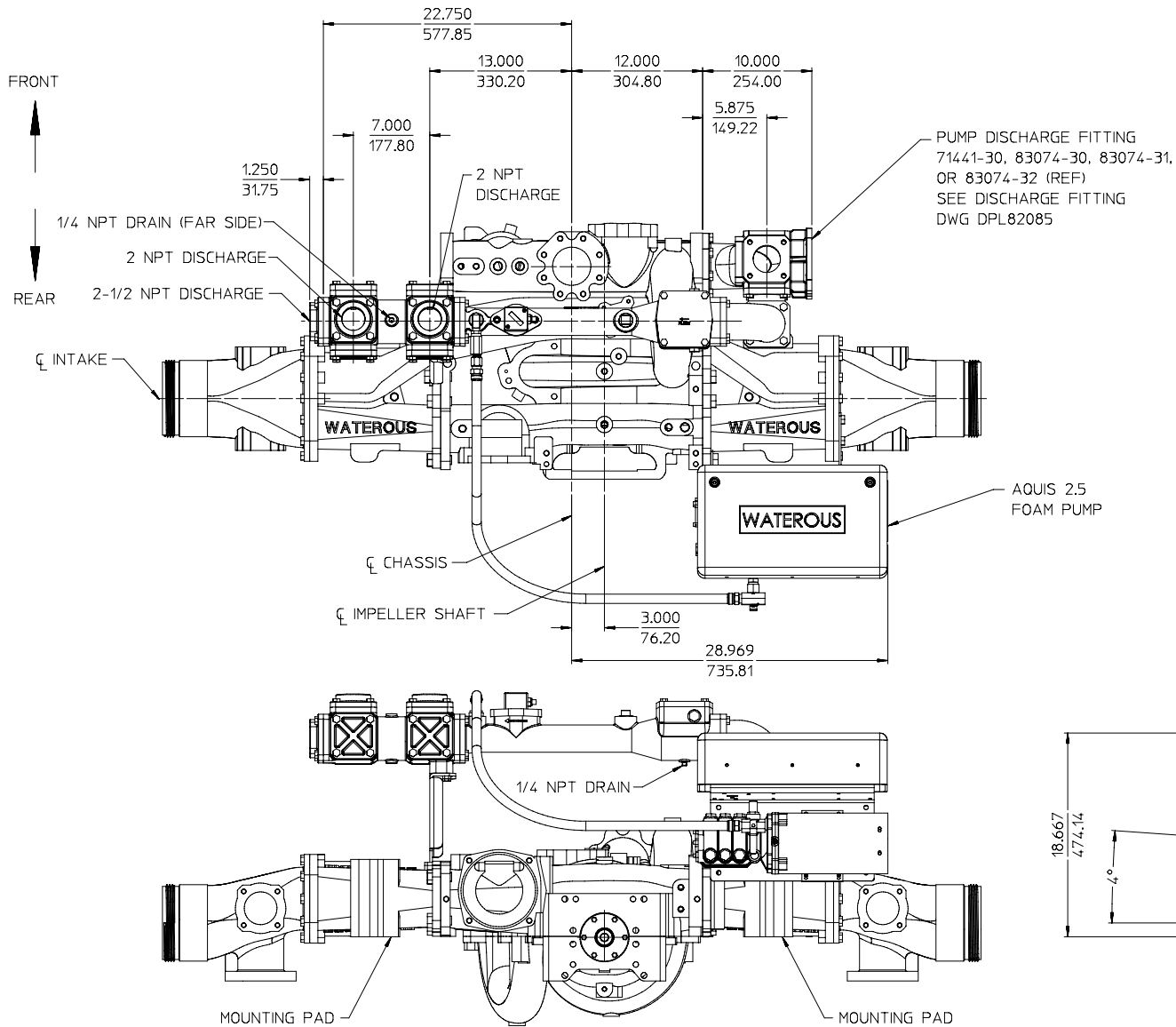
(INCH
MILLIMETER)



PUMP MOUNTED AQUIS 2.5 FOAM PUMP
500 GPM MANIFOLD, LEFT HAND DISCHARGE ON THE FRONT OF PUMP
WITH 81388-7A PUMP DISCHARGE FITTING

AVAILABLE ON IRON PUMPS WITH 4° ANGLE COMPENSATED BODIES ONLY

FOAM MANAGER WITH AQUIS 2.5
 DPL83079
 WATEROUS COMPANY
 SOUTH ST. PAUL, MN 55075
 PAGE 10 OF 30



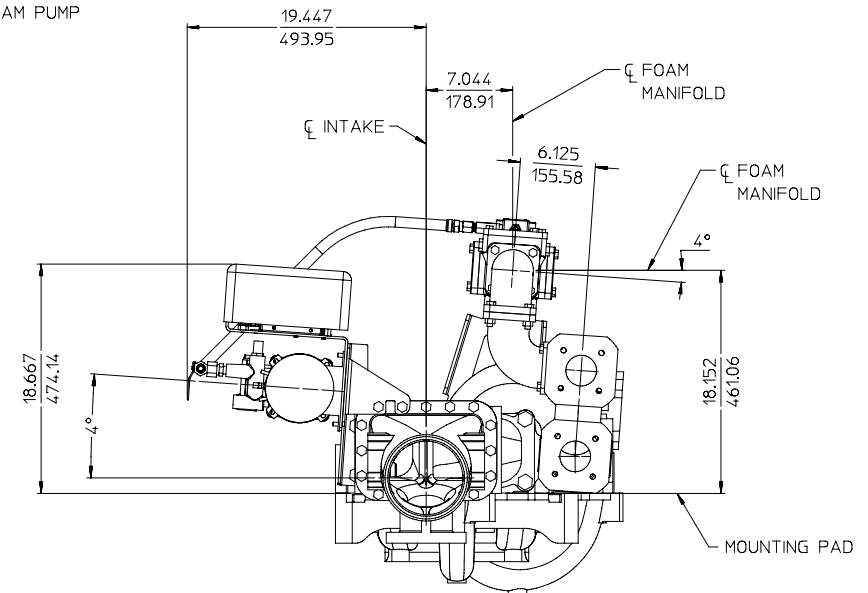
THE FOLLOWING ITEMS SHIPPED LOOSE:

1. INSTRUCTION PLATE. (SEE DETAIL A ON PAGE 14).
2. OIT CONTROL MODULE (SEE DETAIL B ON PAGE 14).
3. INLET LINE STRAINER WITH NIPPLE (SEE DETAIL C ON PAGE 14).
4. OPTIONAL ACCESSORIES (SEE PAGE 29).

NOTE:

REAR INTAKE ADAPTER NOT AVAILABLE ON RIGHT SIDE.

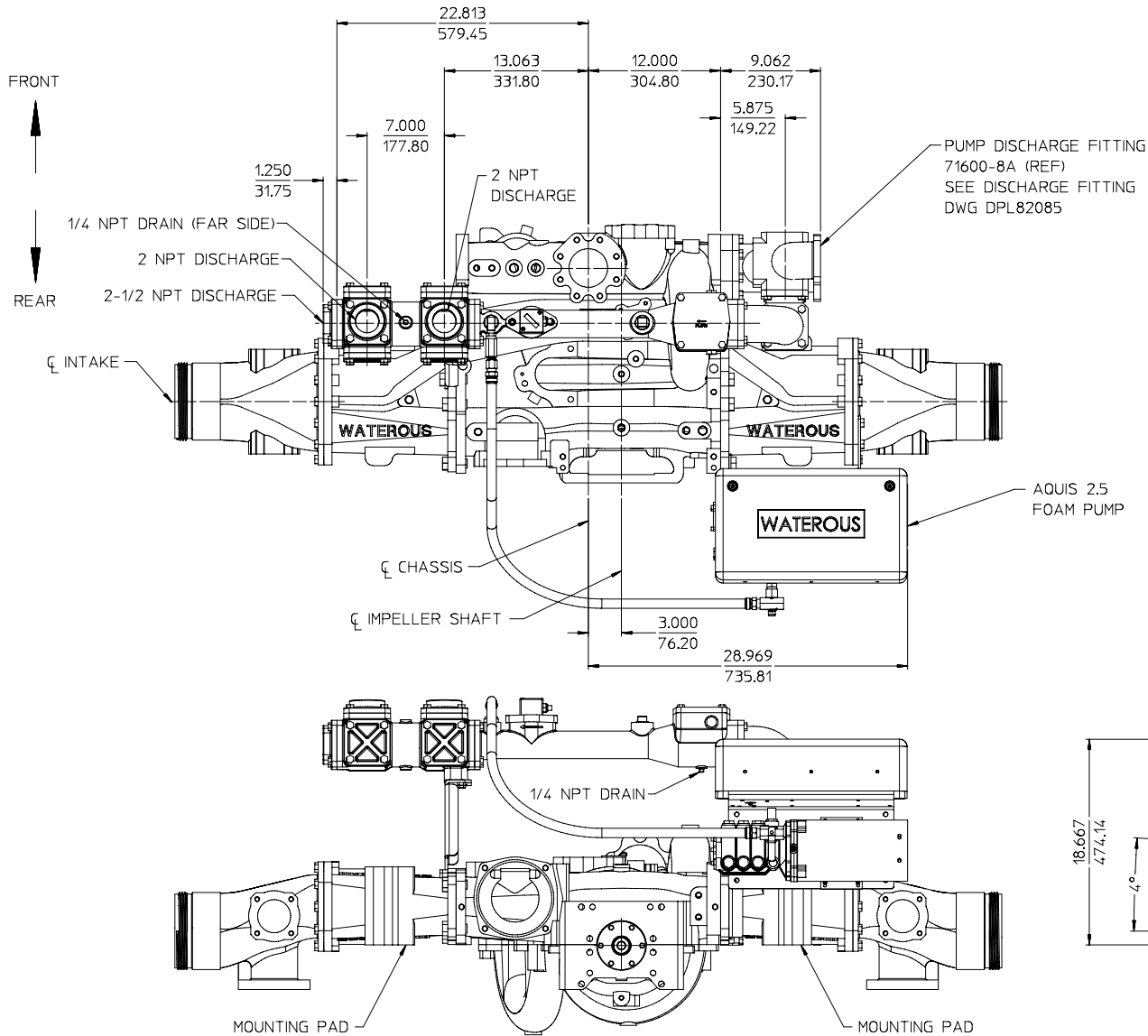
ALL DIMENSIONS SHOWN
AS INCH/MILLIMETER
($\frac{\text{INCH}}{\text{MILLIMETER}}$)



PUMP MOUNTED AQUIS 2.5 FOAM PUMP
500 GPM MANIFOLD, LEFT HAND DISCHARGE OVER THE TOP OF PUMP
WITH 71441-30, 83074-30, 83074-31, OR 83074-32 PUMP DISCHARGE FITTING

AVAILABLE ON IRON PUMPS WITH 4° ANGLE COMPENSATED BODIES ONLY

FOAM MANAGER WITH AQUIS 2.5
DPL83079
WATEROUS COMPANY
SOUTH ST. PAUL, MN 55075
PAGE 11 OF 30



THE FOLLOWING ITEMS SHIPPED LOOSE:

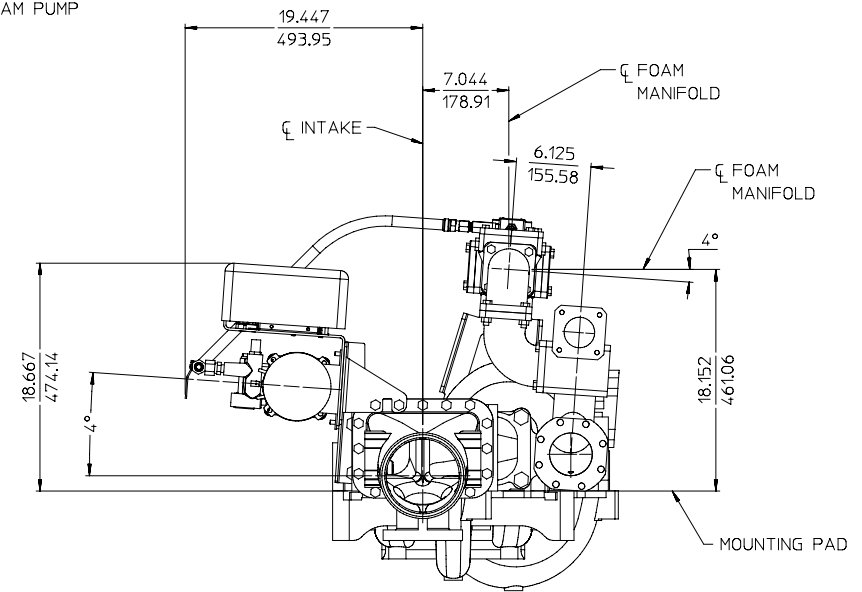
1. INSTRUCTION PLATE. (SEE DETAIL A ON PAGE 14).
2. OIT CONTROL MODULE (SEE DETAIL B ON PAGE 14).
3. INLET LINE STRAINER WITH NIPPLE (SEE DETAIL C ON PAGE 14).
4. OPTIONAL ACCESSORIES (SEE PAGE 29).

NOTE:

REAR INTAKE ADAPTER NOT AVAILABLE ON RIGHT SIDE.

ALL DIMENSIONS SHOWN
AS INCH/MILLIMETER

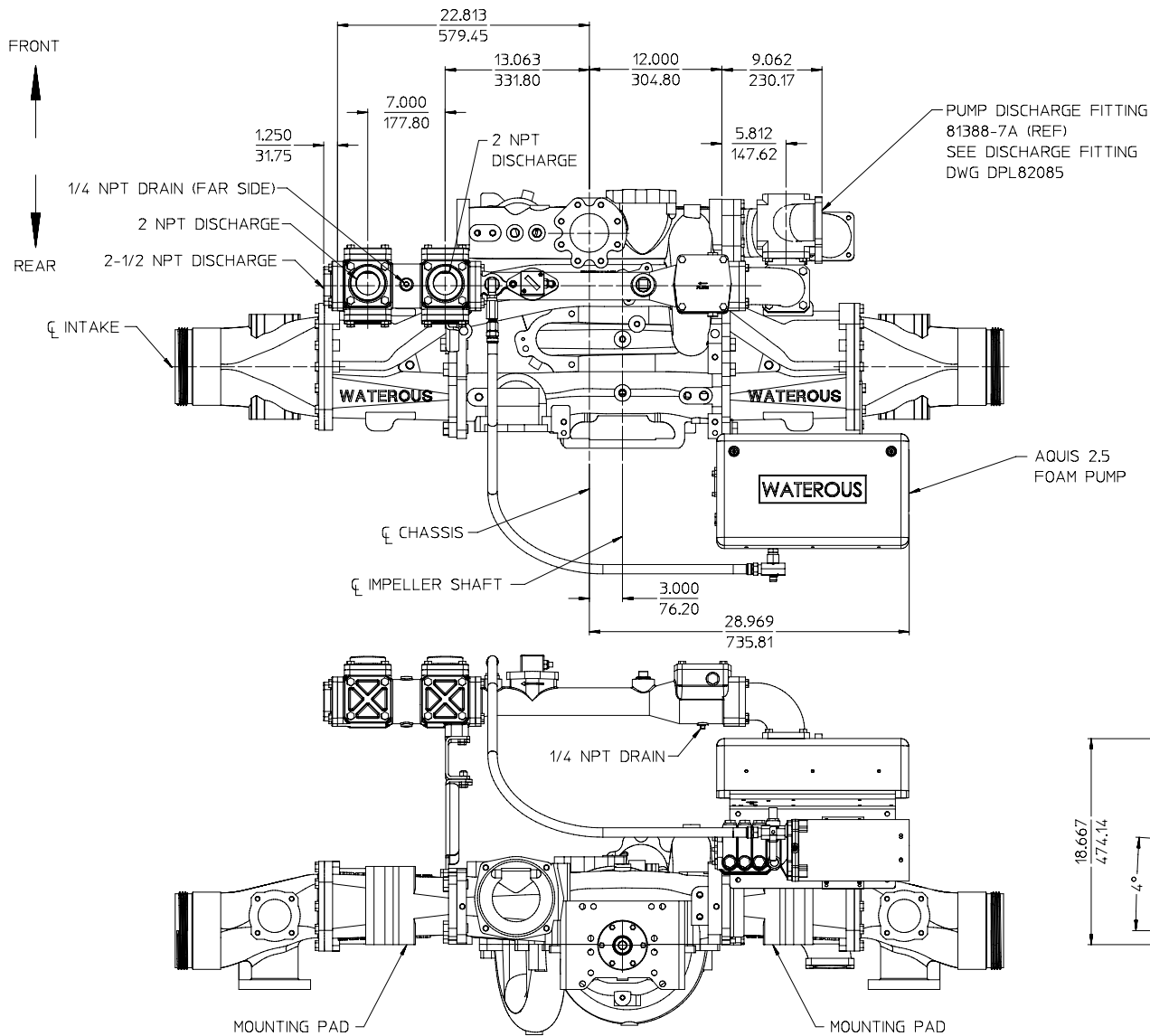
(
INCH
MILLIMETER
)



PUMP MOUNTED AQUIS 2.5 FOAM PUMP
500 GPM MANIFOLD, LEFT HAND DISCHARGE OVER THE TOP OF PUMP
WITH 71600-8A PUMP DISCHARGE FITTING

AVAILABLE ON IRON PUMPS WITH 4° ANGLE COMPENSATED BODIES ONLY

FOAM MANAGER WITH AQUIS 2.5
DPL83079
WATEROUS COMPANY
SOUTH ST. PAUL, MN 55075
PAGE 12 OF 30



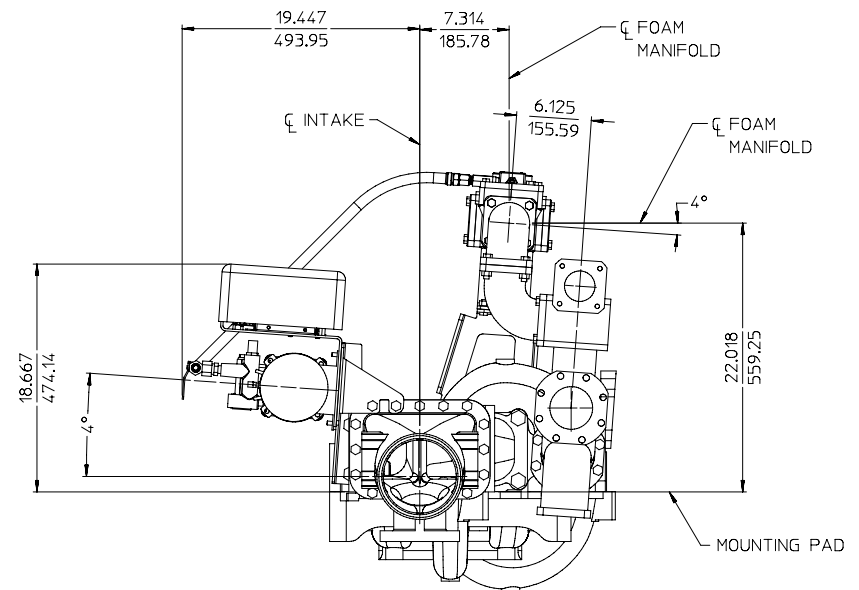
THE FOLLOWING ITEMS SHIPPED LOOSE:

1. INSTRUCTION PLATE. (SEE DETAIL A ON PAGE 14).
2. OIT CONTROL MODULE (SEE DETAIL B ON PAGE 14).
3. INLET LINE STRAINER WITH NIPPLE (SEE DETAIL C ON PAGE 14).
4. OPTIONAL ACCESSORIES (SEE PAGE 29).

NOTE:

REAR INTAKE ADAPTER NOT AVAILABLE ON RIGHT SIDE.

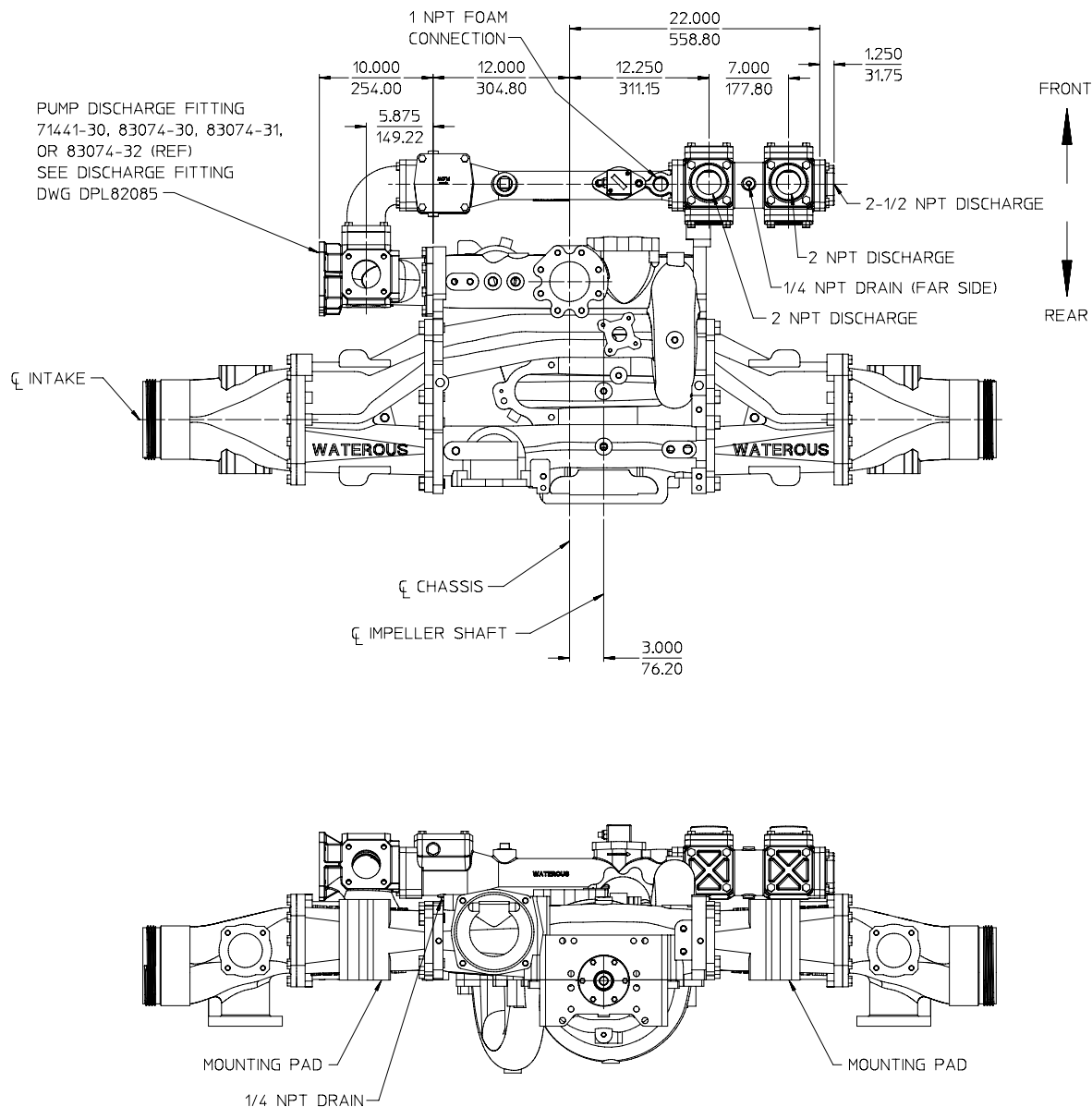
ALL DIMENSIONS SHOWN
AS INCH/MILLIMETER
($\frac{\text{INCH}}{\text{MILLIMETER}}$)



**PUMP MOUNTED AQUIS 2.5 FOAM PUMP
500 GPM MANIFOLD, LEFT HAND DISCHARGE OVER THE TOP OF PUMP
WITH 81388-7A PUMP DISCHARGE FITTING**

AVAILABLE ON IRON PUMPS WITH 4° ANGLE COMPENSATED BODIES ONLY

FOAM MANAGER WITH AQUIS 2.5
DPL83079
WATEROUS COMPANY
SOUTH ST. PAUL, MN 55075
PAGE 13 OF 30



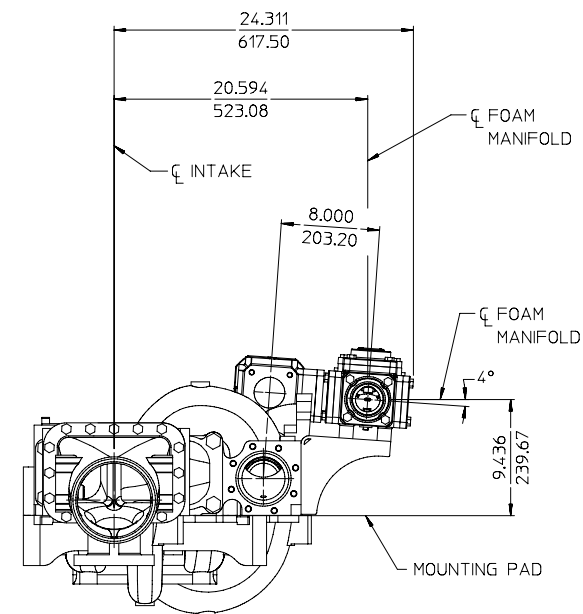
THE FOLLOWING ITEMS SHIPPED LOOSE:

1. INSTRUCTION PLATE. (SEE DETAIL A ON PAGE 28).
2. OIT CONTROL MODULE (SEE DETAIL B ON PAGE 28).
3. INLET LINE STRAINER WITH NIPPLE (SEE DETAIL C ON PAGE 28).
4. AQUIS FOAM PUMP (SEE DETAIL D ON PAGE 28)
5. CHECK VALVE (SEE DETAIL E ON PAGE 28)
6. FOAM INJECTION HOSE KIT (SEE DETAIL F ON PAGE 28)
7. OPTIONAL ACCESSORIES (SEE PAGE 29).

NOTE:

REAR INTAKE ADAPTER NOT AVAILABLE ON RIGHT SIDE.

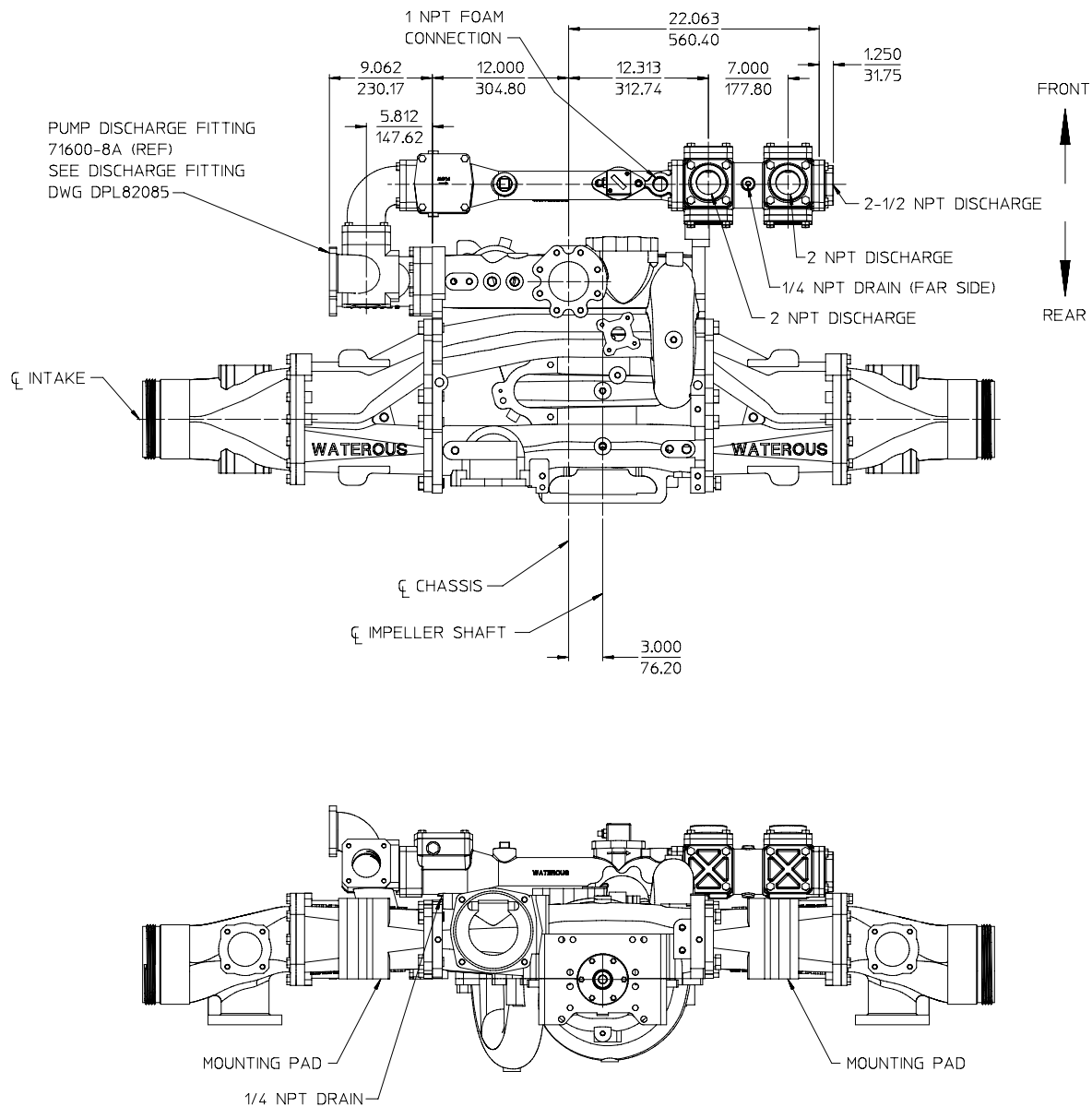
ALL DIMENSIONS SHOWN
AS INCH/MILLIMETER
($\frac{\text{INCH}}{\text{MILLIMETER}}$)



SEPARATELY MOUNTED AQUIS 2.5 FOAM PUMP
500 GPM MANIFOLD, RIGHT HAND DISCHARGE ON THE FRONT OF PUMP
WITH 71441-30, 83074-30, 83074-31, OR 83074-32 PUMP DISCHARGE FITTING

AVAILABLE ON IRON PUMPS WITH 4° ANGLE COMPENSATED BODIES ONLY

FOAM MANAGER WITH AQUIS 2.5
DPL83079
WATEROUS COMPANY
SOUTH ST. PAUL, MN 55075
PAGE 15 OF 30



THE FOLLOWING ITEMS SHIPPED LOOSE:

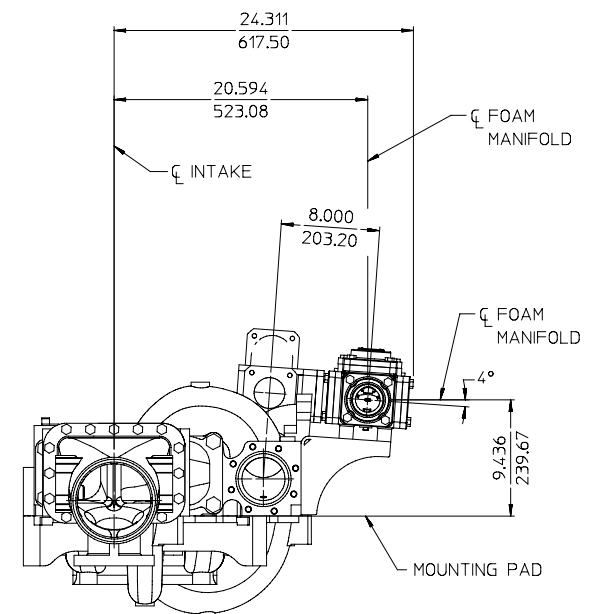
1. INSTRUCTION PLATE. (SEE DETAIL A ON PAGE 28).
2. OIT CONTROL MODULE (SEE DETAIL B ON PAGE 28).
3. INLET LINE STRAINER WITH NIPPLE (SEE DETAIL C ON PAGE 28).
4. AQUIS FOAM PUMP (SEE DETAIL D ON PAGE 28)
5. CHECK VALVE (SEE DETAIL E ON PAGE 28)
6. FOAM INJECTION HOSE KIT (SEE DETAIL F ON PAGE 28)
7. OPTIONAL ACCESSORIES (SEE PAGE 29).

NOTE:

REAR INTAKE ADAPTER NOT AVAILABLE ON RIGHT SIDE.

ALL DIMENSIONS SHOWN
AS INCH/MILLIMETER

$\frac{\text{INCH}}{\text{MILLIMETER}}$



SEPARATELY MOUNTED AQUIS 2.5 FOAM PUMP
500 GPM MANIFOLD, RIGHT HAND DISCHARGE ON THE FRONT OF PUMP
WITH 71600-8A PUMP DISCHARGE FITTING

AVAILABLE ON IRON PUMPS WITH 4° ANGLE COMPENSATED BODIES ONLY

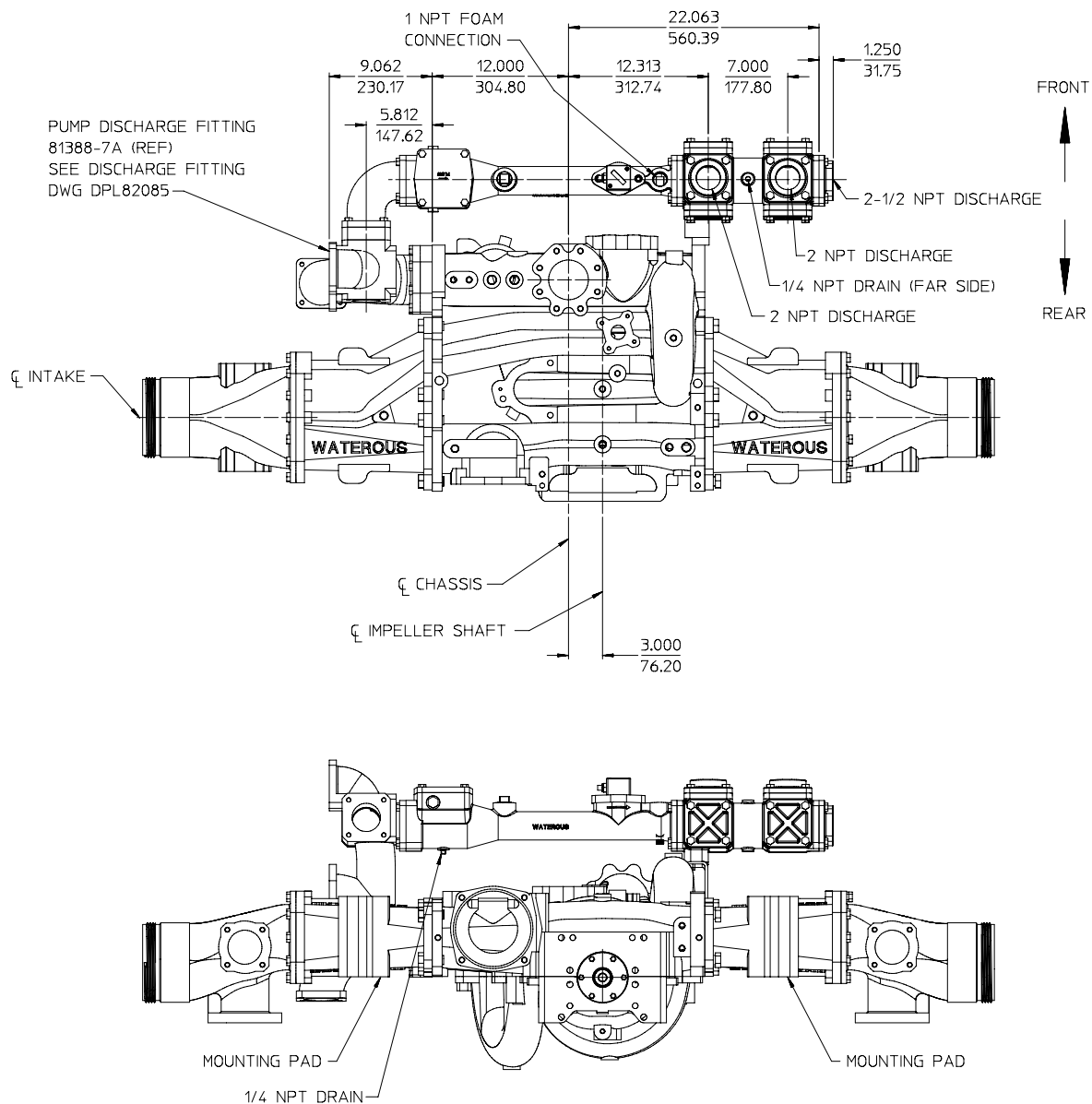
FOAM MANAGER WITH AQUIS 2.5

DPL83079

WATEROUS COMPANY

SOUTH ST. PAUL, MN 55075

PAGE 16 OF 30



THE FOLLOWING ITEMS SHIPPED LOOSE:

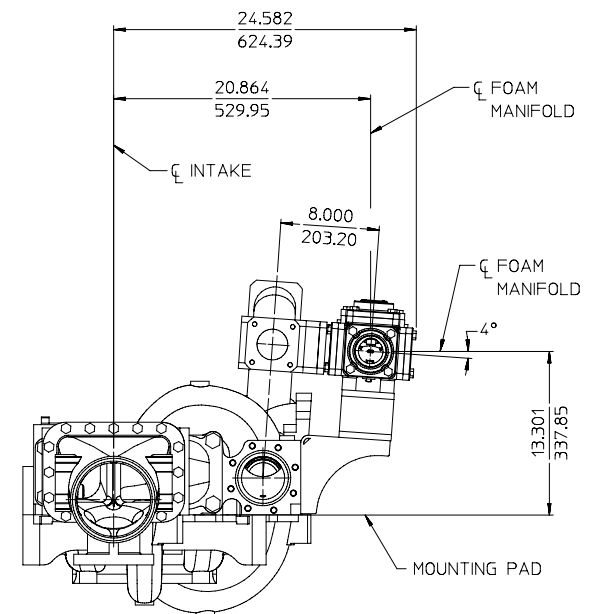
1. INSTRUCTION PLATE. (SEE DETAIL A ON PAGE 28).
2. OIT CONTROL MODULE (SEE DETAIL B ON PAGE 28).
3. INLET LINE STRAINER WITH NIPPLE (SEE DETAIL C ON PAGE 28).
4. AQUIS FOAM PUMP (SEE DETAIL D ON PAGE 28)
5. CHECK VALVE (SEE DETAIL E ON PAGE 28)
6. FOAM INJECTION HOSE KIT (SEE DETAIL F ON PAGE 28)
7. OPTIONAL ACCESSORIES (SEE PAGE 29).

NOTE:

REAR INTAKE ADAPTER NOT AVAILABLE ON RIGHT SIDE.

ALL DIMENSIONS SHOWN
AS INCH/MILLIMETER

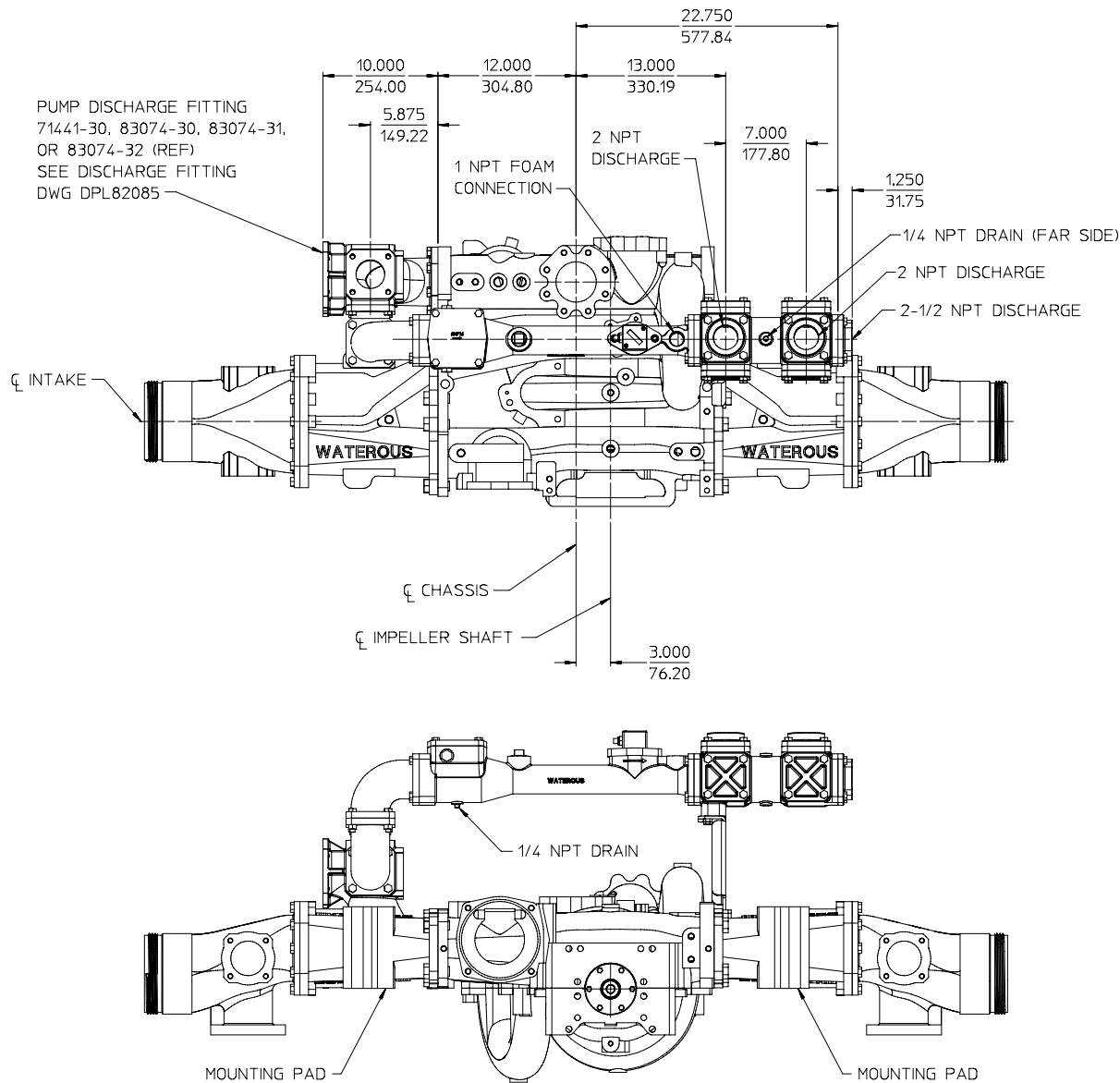
(
INCH
MILLIMETER)



**SEPARATELY MOUNTED AQUIS 2.5 FOAM PUMP
500 GPM MANIFOLD, RIGHT HAND DISCHARGE ON THE FRONT OF PUMP
WITH 81388-7A PUMP DISCHARGE FITTING**

AVAILABLE ON IRON PUMPS WITH 4° ANGLE COMPENSATED BODIES ONLY

FOAM MANAGER WITH AQUIS 2.5
DPL83079
WATEROUS COMPANY
SOUTH ST. PAUL, MN 55075
PAGE 17 OF 30



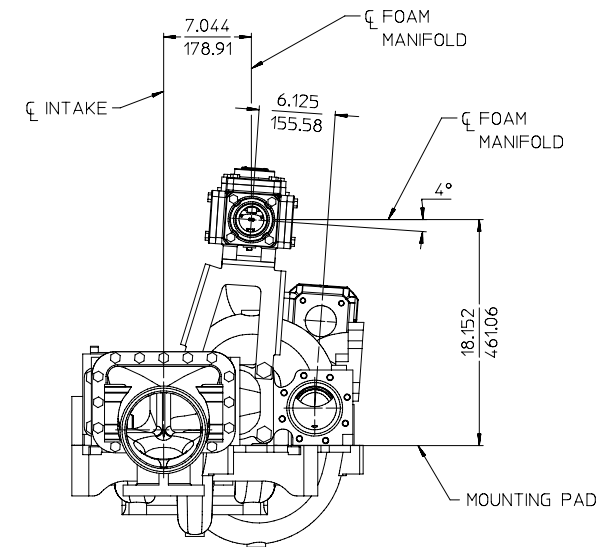
THE FOLLOWING ITEMS SHIPPED LOOSE:

1. INSTRUCTION PLATE. (SEE DETAIL A ON PAGE 28).
2. OIT CONTROL MODULE (SEE DETAIL B ON PAGE 28).
3. INLET LINE STRAINER WITH NIPPLE (SEE DETAIL C ON PAGE 28).
4. AQUIS FOAM PUMP (SEE DETAIL D ON PAGE 28)
5. CHECK VALVE (SEE DETAIL E ON PAGE 28)
6. FOAM INJECTION HOSE KIT (SEE DETAIL F ON PAGE 28)
7. OPTIONAL ACCESSORIES (SEE PAGE 29).

NOTE:

REAR INTAKE ADAPTER NOT AVAILABLE ON RIGHT SIDE.

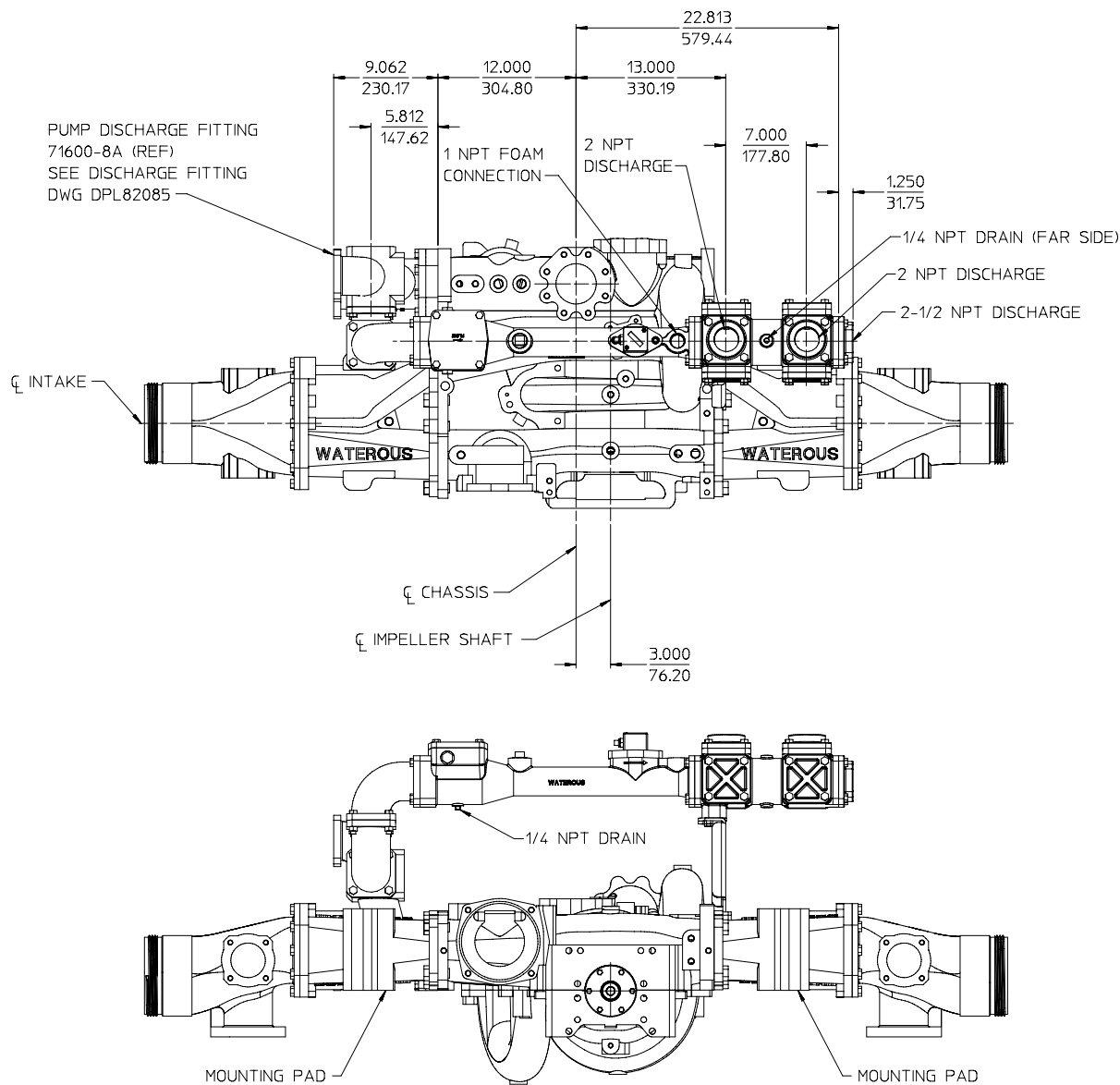
ALL DIMENSIONS SHOWN
AS INCH/MILLIMETER
(INCH
MILLIMETER)



SEPARATELY MOUNTED AQUIS 2.5 FOAM PUMP
500 GPM MANIFOLD, RIGHT HAND DISCHARGE OVER THE TOP OF PUMP
WITH 71441-30, 83074-30, 83074-31, OR 83074-32 PUMP DISCHARGE FITTING

AVAILABLE ON IRON PUMPS WITH 4° ANGLE COMPENSATED BODIES ONLY

FOAM MANAGER WITH AQUIS 2.5
DPL83079
WATEROUS COMPANY
SOUTH ST. PAUL, MN 55075
PAGE 18 OF 30



FRONT

REAR

THE FOLLOWING ITEMS SHIPPED LOOSE:

1. INSTRUCTION PLATE. (SEE DETAIL A ON PAGE 28).
2. OIT CONTROL MODULE (SEE DETAIL B ON PAGE 28).
3. INLET LINE STRAINER WITH NIPPLE (SEE DETAIL C ON PAGE 28).
4. AQUIS FOAM PUMP (SEE DETAIL D ON PAGE 28)
5. CHECK VALVE (SEE DETAIL E ON PAGE 28)
6. FOAM INJECTION HOSE KIT (SEE DETAIL F ON PAGE 28)
7. OPTIONAL ACCESSORIES (SEE PAGE 29).

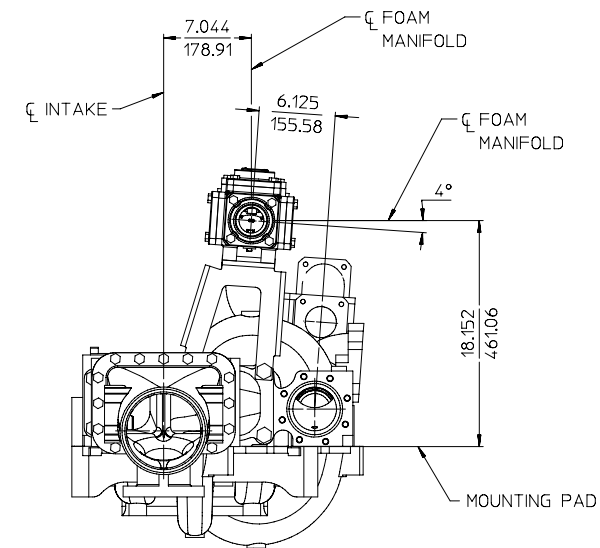
NOTE:

REAR INTAKE ADAPTER NOT AVAILABLE ON RIGHT SIDE.

ALL DIMENSIONS SHOWN

AS INCH/MILLIMETER

(INCH
MILLIMETER)



SEPARATELY MOUNTED AQUIS 2.5 FOAM PUMP
500 GPM MANIFOLD, RIGHT HAND DISCHARGE OVER THE TOP OF PUMP
WITH 71600-8A PUMP DISCHARGE FITTING

AVAILABLE ON IRON PUMPS WITH 4° ANGLE COMPENSATED BODIES ONLY

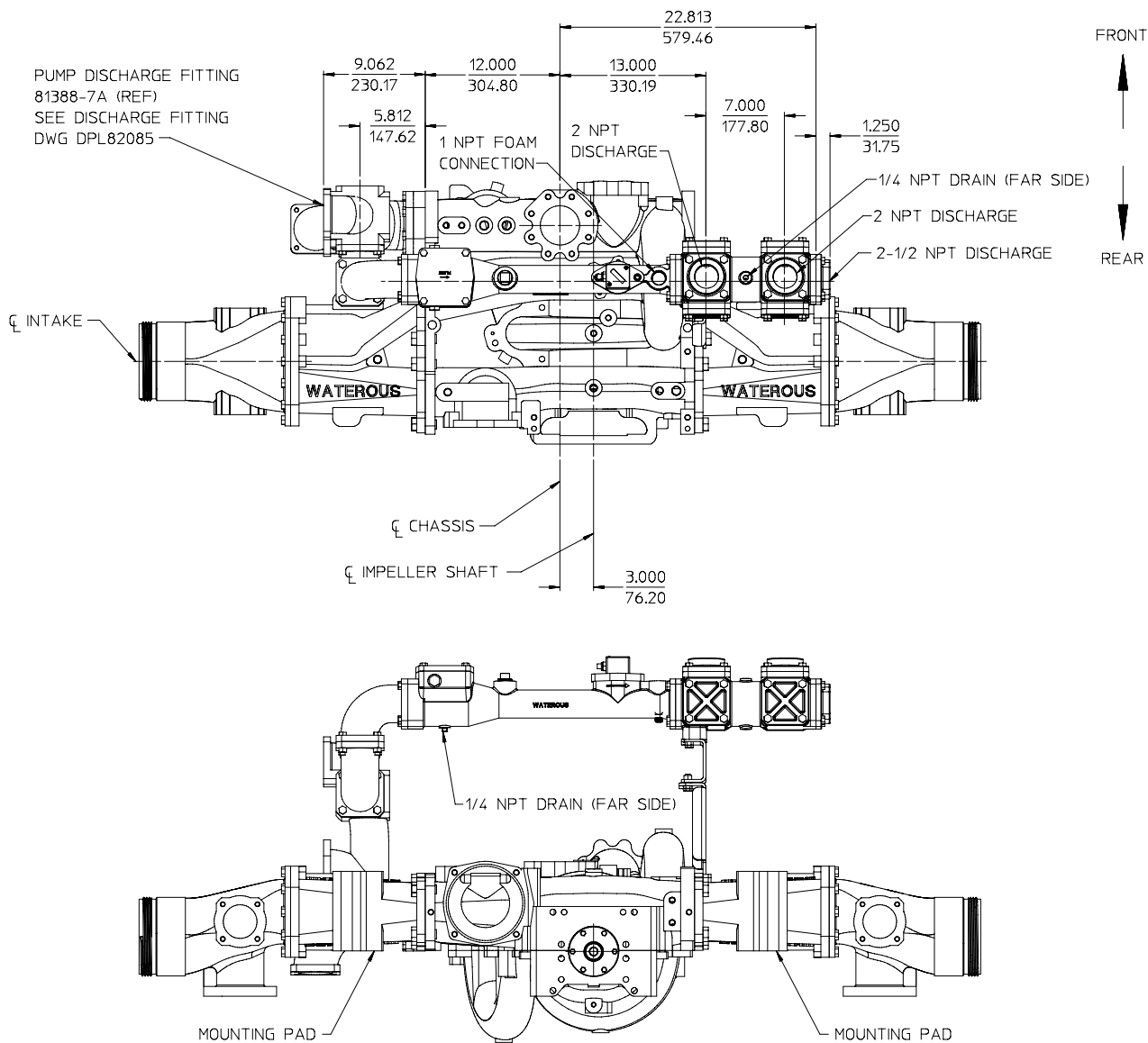
FOAM MANAGER WITH AQUIS 2.5

DPL83079

WATEROUS COMPANY

SOUTH ST. PAUL, MN 55075

PAGE 19 OF 30



THE FOLLOWING ITEMS SHIPPED LOOSE:

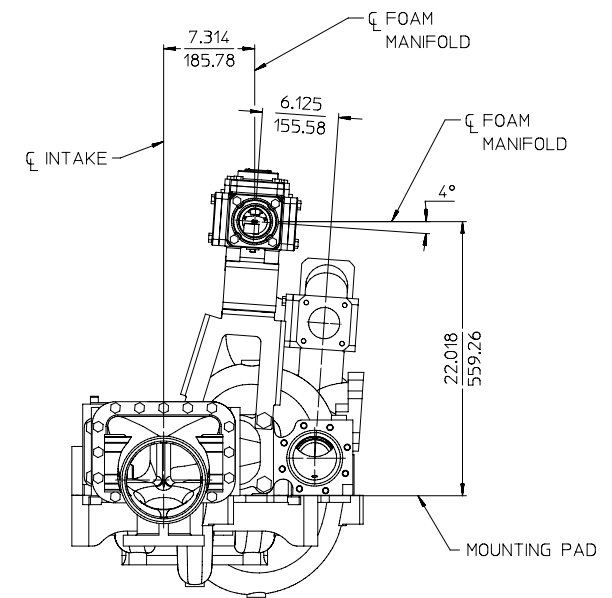
1. INSTRUCTION PLATE. (SEE DETAIL A ON PAGE 28).
2. OIT CONTROL MODULE (SEE DETAIL B ON PAGE 28).
3. INLET LINE STRAINER WITH NIPPLE (SEE DETAIL C ON PAGE 28).
4. AQUIS FOAM PUMP (SEE DETAIL D ON PAGE 28)
5. CHECK VALVE (SEE DETAIL E ON PAGE 28)
6. FOAM INJECTION HOSE KIT (SEE DETAIL F ON PAGE 28)
7. OPTIONAL ACCESSORIES (SEE PAGE 29).

NOTE:

REAR INTAKE ADAPTER NOT AVAILABLE ON RIGHT SIDE.

ALL DIMENSIONS SHOWN
AS INCH/MILLIMETER

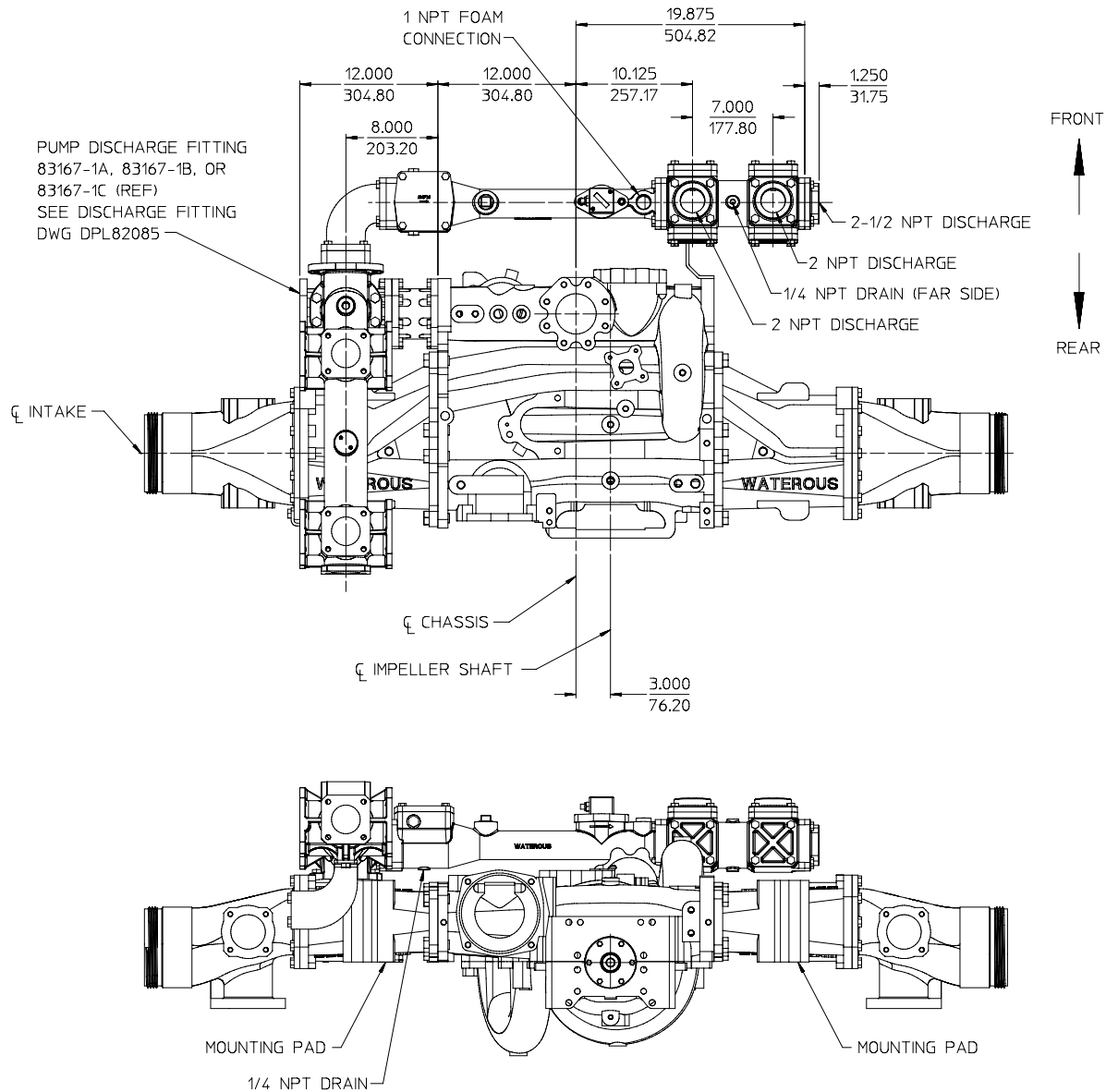
(
INCH
MILLIMETER
)



SEPARATELY MOUNTED AQUIS 2.5 FOAM PUMP
500 GPM MANIFOLD, RIGHT HAND DISCHARGE OVER THE TOP OF PUMP
WITH 81388-7A PUMP DISCHARGE FITTING

AVAILABLE ON IRON PUMPS WITH 4° ANGLE COMPENSATED BODIES ONLY

FOAM MANAGER WITH AQUIS 2.5
DPL83079
WATEROUS COMPANY
SOUTH ST. PAUL, MN 55075
PAGE 20 OF 30



THE FOLLOWING ITEMS SHIPPED LOOSE:

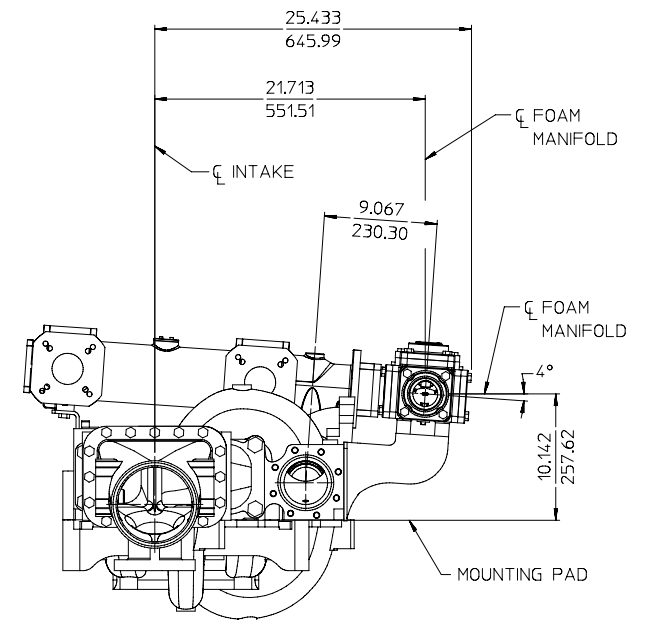
1. INSTRUCTION PLATE. (SEE DETAIL A ON PAGE 28).
2. OIT CONTROL MODULE (SEE DETAIL B ON PAGE 28).
3. INLET LINE STRAINER WITH NIPPLE (SEE DETAIL C ON PAGE 28).
4. AQUIS FOAM PUMP (SEE DETAIL D ON PAGE 28)
5. CHECK VALVE (SEE DETAIL E ON PAGE 28)
6. FOAM INJECTION HOSE KIT (SEE DETAIL F ON PAGE 28)
7. OPTIONAL ACCESSORIES (SEE PAGE 29).

NOTE:

REAR INTAKE ADAPTER NOT AVAILABLE ON RIGHT SIDE.

ALL DIMENSIONS SHOWN
AS INCH/MILLIMETER

(
INCH
MILLIMETER)



SEPARATELY MOUNTED AQUIS 2.5 FOAM PUMP
500 GPM MANIFOLD, RIGHT HAND DISCHARGE ON THE FRONT OF DISCHARGE MANIFOLD
WITH 83167-1A, 83167-1B, OR 83167-1C PUMP DISCHARGE MANIFOLD

AVAILABLE ON IRON PUMPS WITH 4° ANGLE COMPENSATED BODIES ONLY

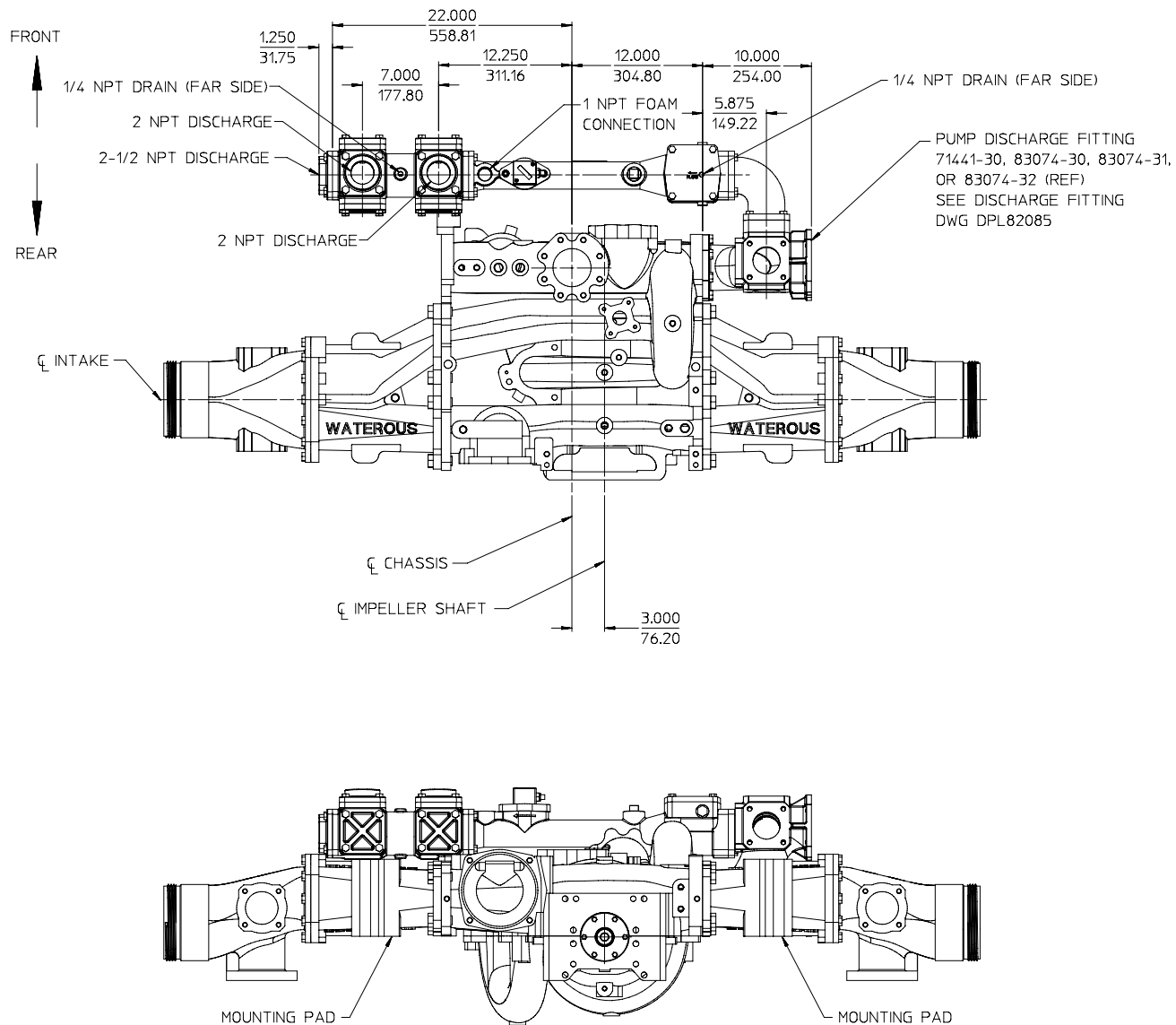
FOAM MANAGER WITH AQUIS 2.5

DPL83079

WATEROUS COMPANY

SOUTH ST. PAUL, MN 55075

PAGE 21 OF 30



THE FOLLOWING ITEMS SHIPPED LOOSE:

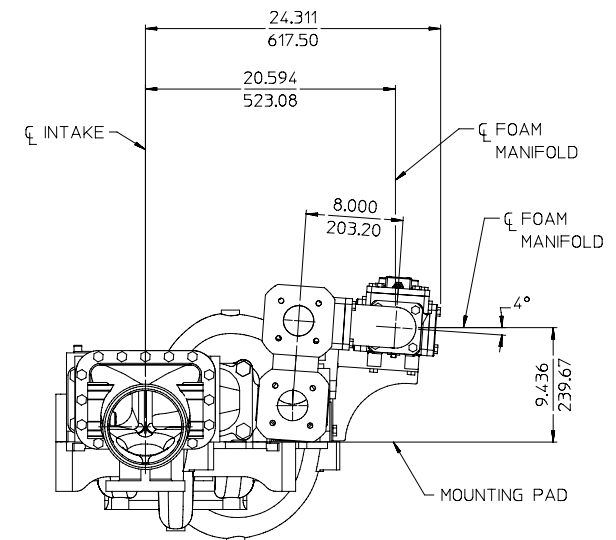
1. INSTRUCTION PLATE. (SEE DETAIL A ON PAGE 28).
2. OIT CONTROL MODULE (SEE DETAIL B ON PAGE 28).
3. INLET LINE STRAINER WITH NIPPLE (SEE DETAIL C ON PAGE 28).
4. AQUIS FOAM PUMP (SEE DETAIL D ON PAGE 28)
5. CHECK VALVE (SEE DETAIL E ON PAGE 28)
6. FOAM INJECTION HOSE KIT (SEE DETAIL F ON PAGE 28)
7. OPTIONAL ACCESSORIES (SEE PAGE 29).

NOTE:

REAR INTAKE ADAPTER NOT AVAILABLE ON RIGHT SIDE.

ALL DIMENSIONS SHOWN
AS INCH/MILLIMETER

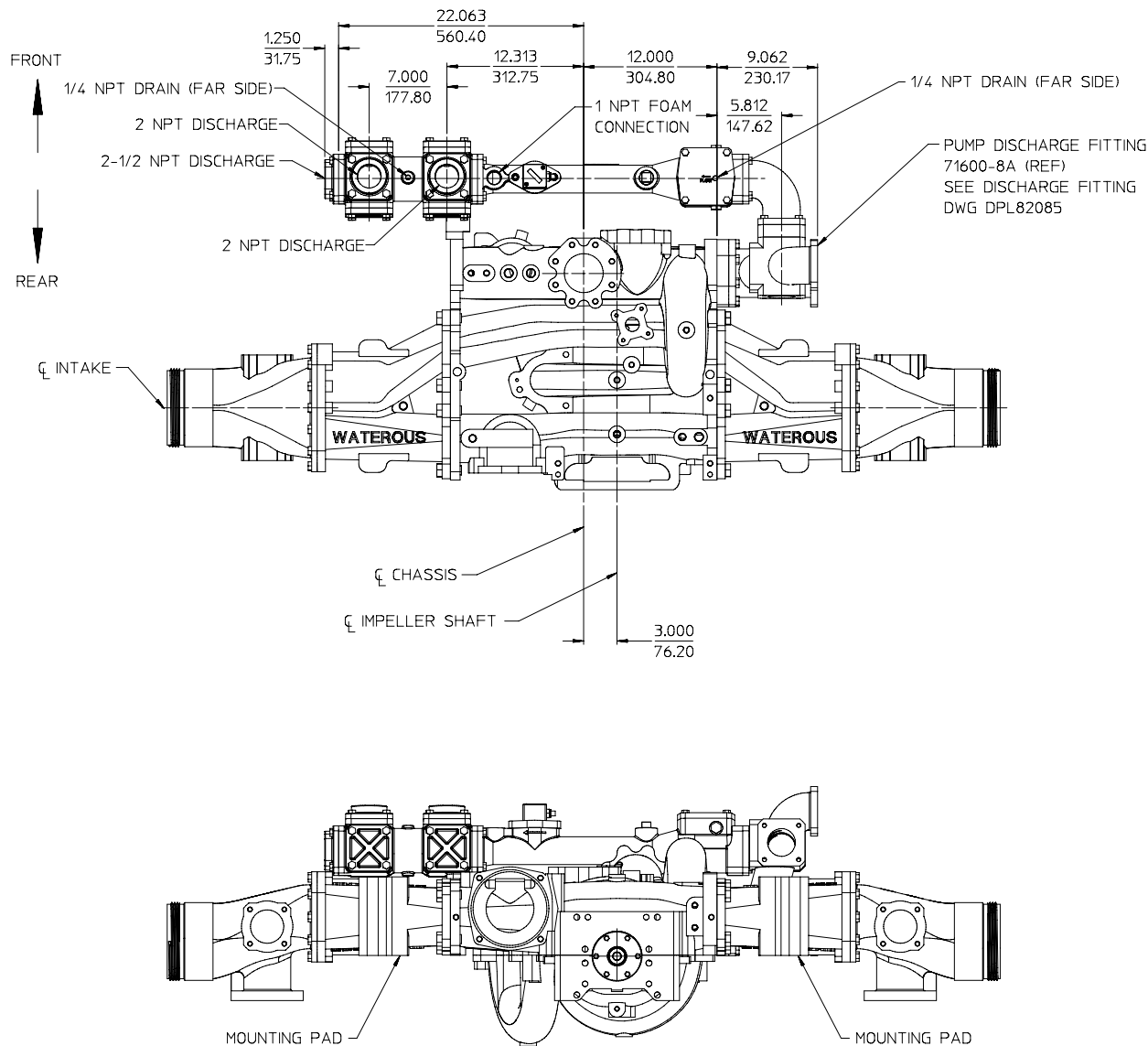
(INCH
MILLIMETER)



SEPARATELY MOUNTED AQUIS 2.5 FOAM PUMP
500 GPM MANIFOLD, LEFT HAND DISCHARGE ON THE FRONT OF PUMP
WITH 71441-30, 83074-30, 83074-31, OR 83074-32 PUMP DISCHARGE FITTING

AVAILABLE ON IRON PUMPS WITH 4° ANGLE COMPENSATED BODIES ONLY

FOAM MANAGER WITH AQUIS 2.5
 DPL83079
 WATEROUS COMPANY
 SOUTH ST. PAUL, MN 55075
 PAGE 22 OF 30



THE FOLLOWING ITEMS SHIPPED LOOSE:

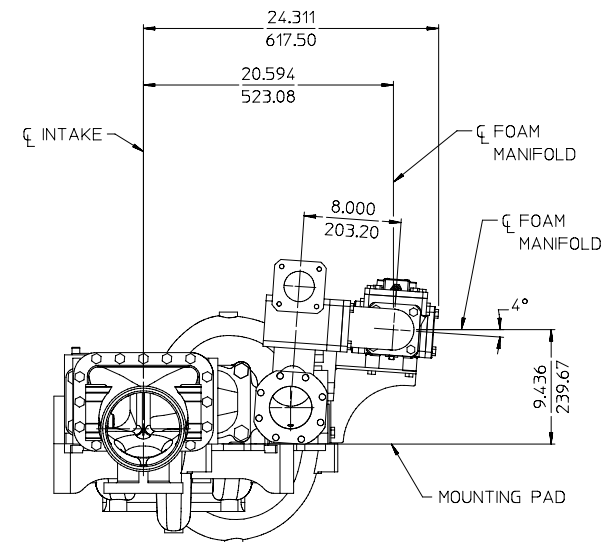
1. INSTRUCTION PLATE. (SEE DETAIL A ON PAGE 28).
2. OIT CONTROL MODULE (SEE DETAIL B ON PAGE 28).
3. INLET LINE STRAINER WITH NIPPLE (SEE DETAIL C ON PAGE 28).
4. AQUIS FOAM PUMP (SEE DETAIL D ON PAGE 28)
5. CHECK VALVE (SEE DETAIL E ON PAGE 28)
6. FOAM INJECTION HOSE KIT (SEE DETAIL F ON PAGE 28)
7. OPTIONAL ACCESSORIES (SEE PAGE 29).

NOTE:

REAR INTAKE ADAPTER NOT AVAILABLE ON RIGHT SIDE.

ALL DIMENSIONS SHOWN
AS INCH/MILLIMETER

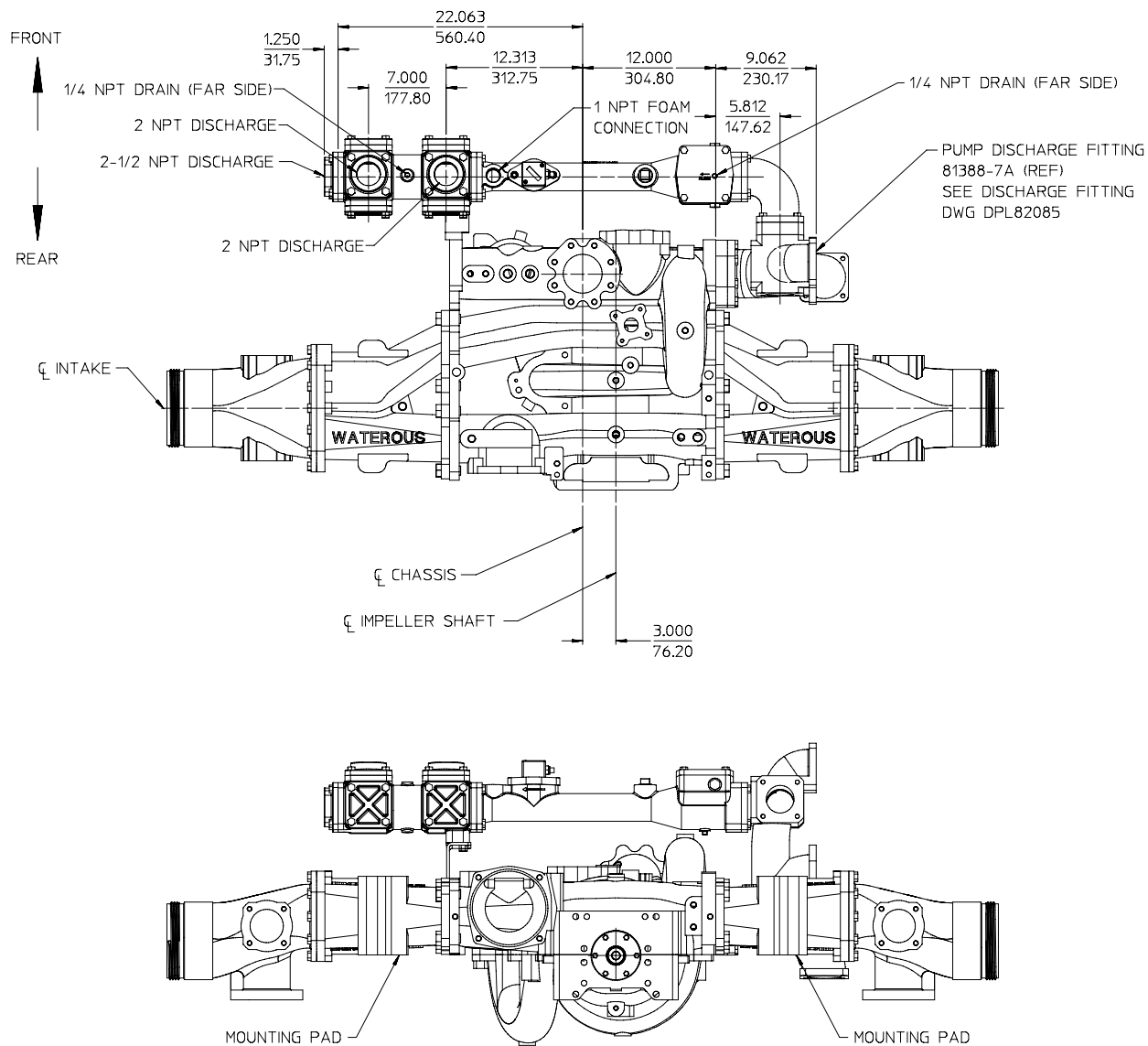
(
INCH
MILLIMETER
)



**SEPARATELY MOUNTED AQUIS 2.5 FOAM PUMP
500 GPM MANIFOLD, LEFT HAND DISCHARGE ON THE FRONT OF PUMP
WITH 71600-8A PUMP DISCHARGE FITTING**

AVAILABLE ON IRON PUMPS WITH 4° ANGLE COMPENSATED BODIES ONLY

FOAM MANAGER WITH AQUIS 2.5
DPL83079
WATEROUS COMPANY
SOUTH ST. PAUL, MN 55075
PAGE 23 OF 30



THE FOLLOWING ITEMS SHIPPED LOOSE:

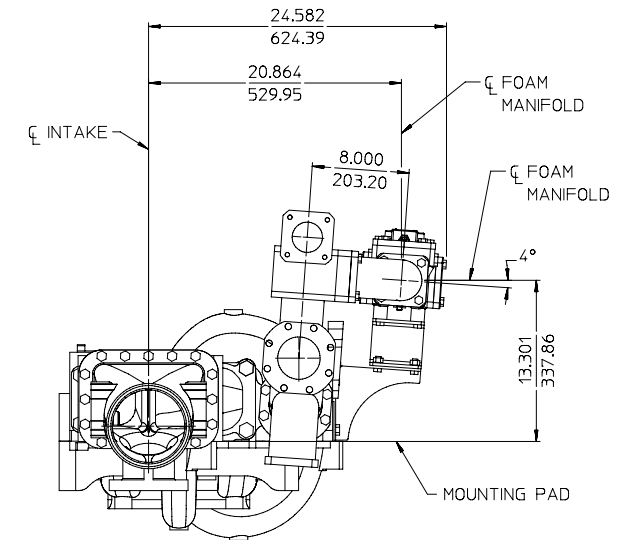
1. INSTRUCTION PLATE. (SEE DETAIL A ON PAGE 28).
2. OIT CONTROL MODULE (SEE DETAIL B ON PAGE 28).
3. INLET LINE STRAINER WITH NIPPLE (SEE DETAIL C ON PAGE 28).
4. AQUIS FOAM PUMP (SEE DETAIL D ON PAGE 28)
5. CHECK VALVE (SEE DETAIL E ON PAGE 28)
6. FOAM INJECTION HOSE KIT (SEE DETAIL F ON PAGE 28)
7. OPTIONAL ACCESSORIES (SEE PAGE 29).

NOTE:

REAR INTAKE ADAPTER NOT AVAILABLE ON RIGHT SIDE.

ALL DIMENSIONS SHOWN
AS INCH/MILLIMETER

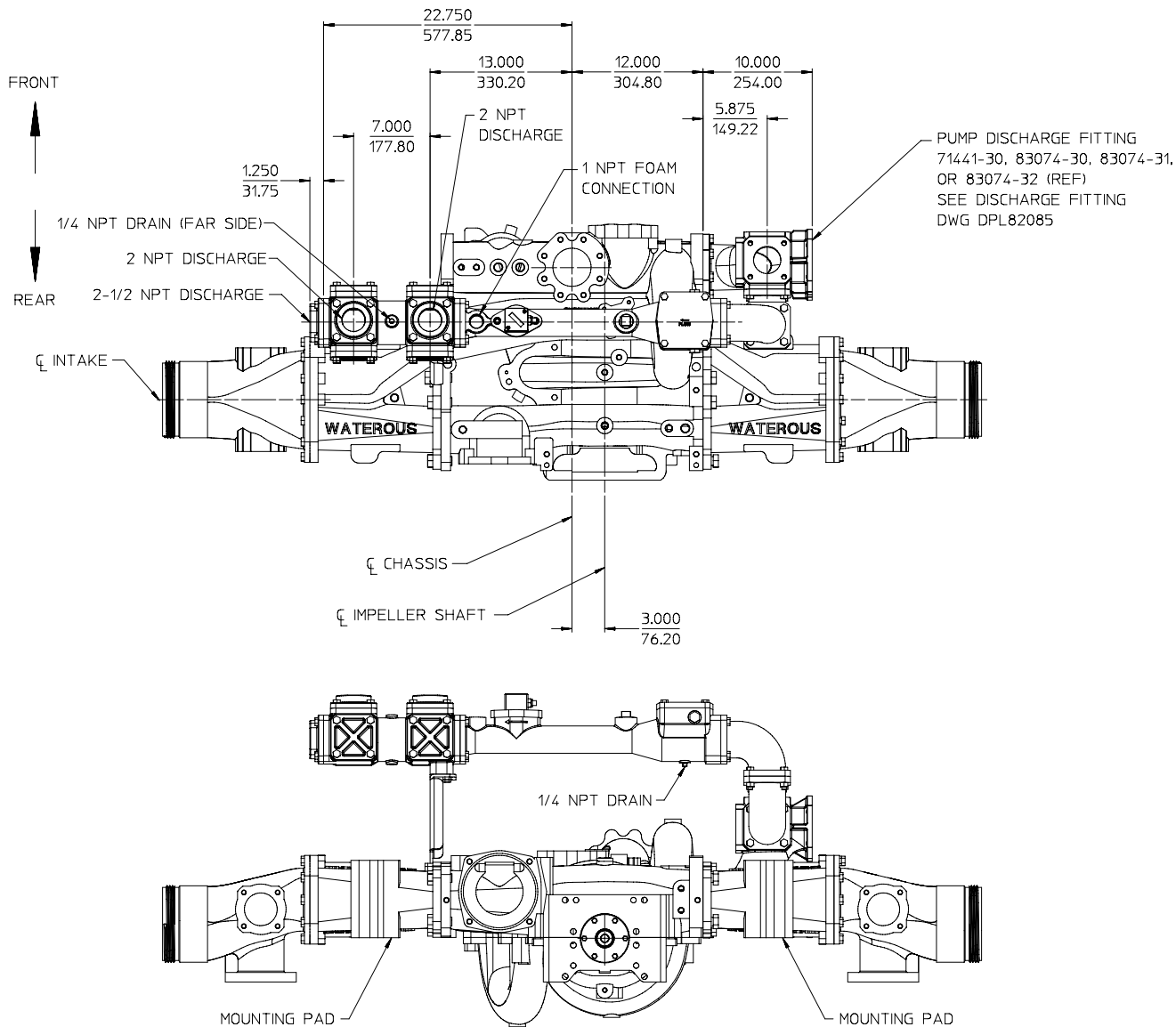
($\frac{\text{INCH}}{\text{MILLIMETER}}$)



**SEPARATELY MOUNTED AQUIS 2.5 FOAM PUMP
500 GPM MANIFOLD, LEFT HAND DISCHARGE ON THE FRONT OF PUMP
WITH 81388-7A PUMP DISCHARGE FITTING**

AVAILABLE ON IRON PUMPS WITH 4° ANGLE COMPENSATED BODIES ONLY

FOAM MANAGER WITH AQUIS 2.5
DPL83079
WATEROUS COMPANY
SOUTH ST. PAUL, MN 55075
PAGE 24 OF 30



THE FOLLOWING ITEMS SHIPPED LOOSE:

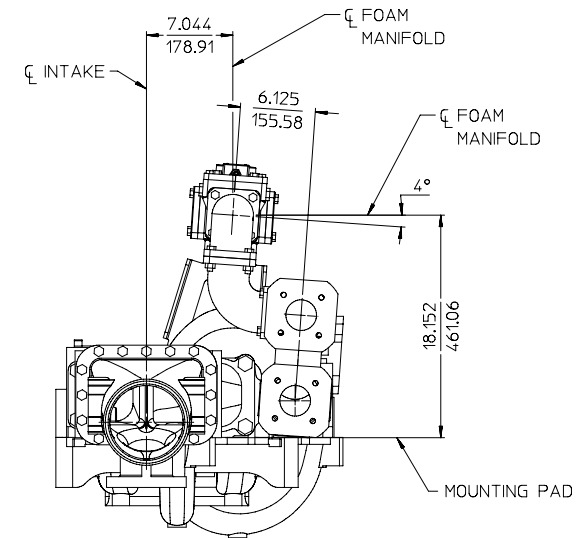
1. INSTRUCTION PLATE. (SEE DETAIL A ON PAGE 28).
2. OIT CONTROL MODULE (SEE DETAIL B ON PAGE 28).
3. INLET LINE STRAINER WITH NIPPLE (SEE DETAIL C ON PAGE 28).
4. AQUIS FOAM PUMP (SEE DETAIL D ON PAGE 28)
5. CHECK VALVE (SEE DETAIL E ON PAGE 28)
6. FOAM INJECTION HOSE KIT (SEE DETAIL F ON PAGE 28)
7. OPTIONAL ACCESSORIES (SEE PAGE 29).

NOTE:

REAR INTAKE ADAPTER NOT AVAILABLE ON RIGHT SIDE.

ALL DIMENSIONS SHOWN
AS INCH/MILLIMETER

($\frac{\text{INCH}}{\text{MILLIMETER}}$)



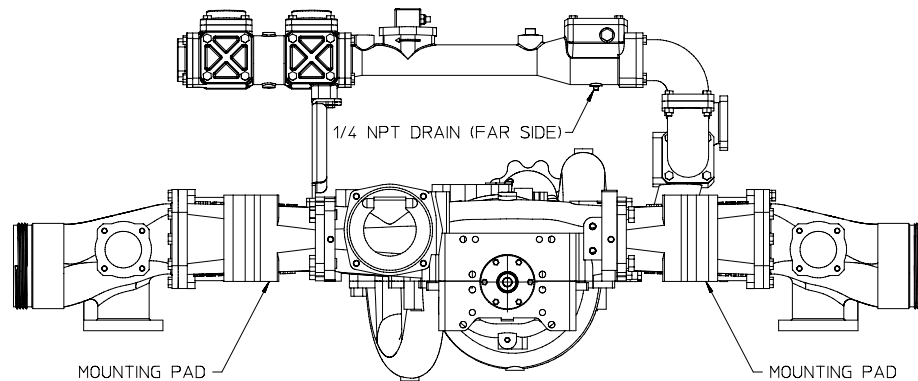
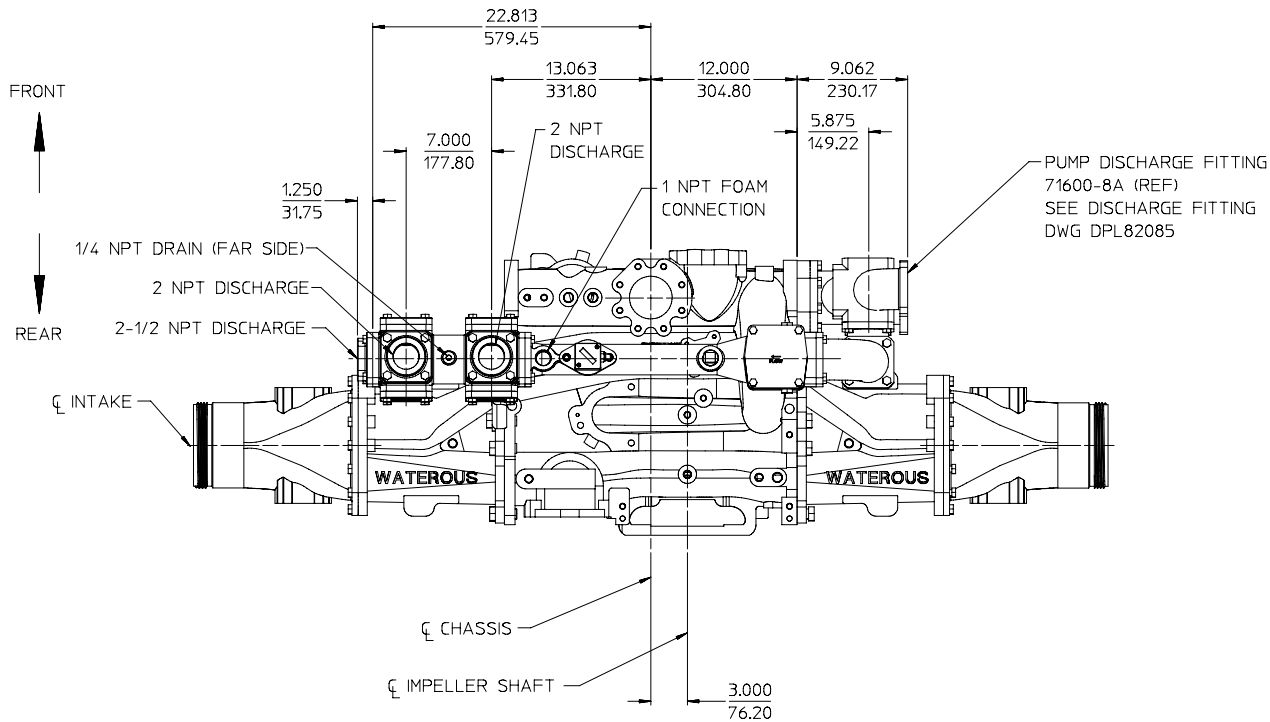
SEPARATELY MOUNTED AQUIS 2.5 FOAM PUMP
500 GPM MANIFOLD, LEFT HAND DISCHARGE OVER THE TOP OF PUMP
WITH 71441-30, 83074-30, 83074-31, OR 83074-32 PUMP DISCHARGE FITTING

AVAILABLE ON IRON PUMPS WITH 4° ANGLE COMPENSATED BODIES ONLY

FOAM MANAGER WITH AQUIS 2.5
DPL83079

WATEROUS COMPANY
SOUTH ST. PAUL, MN 55075

PAGE 25 OF 30



THE FOLLOWING ITEMS SHIPPED LOOSE:

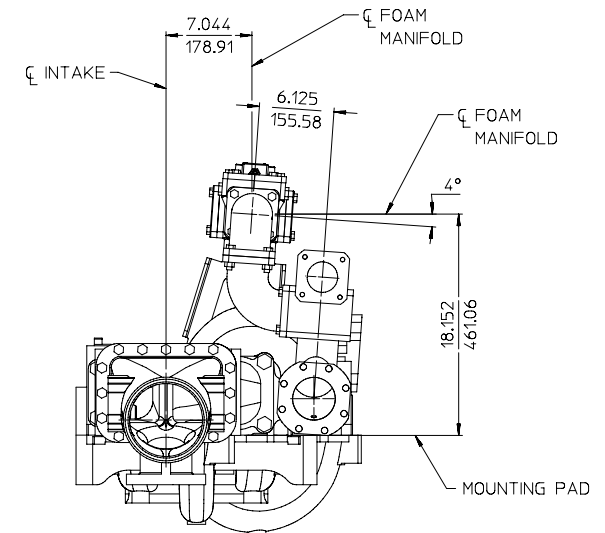
1. INSTRUCTION PLATE. (SEE DETAIL A ON PAGE 28).
2. OIT CONTROL MODULE (SEE DETAIL B ON PAGE 28).
3. INLET LINE STRAINER WITH NIPPLE (SEE DETAIL C ON PAGE 28).
4. AQUIS FOAM PUMP (SEE DETAIL D ON PAGE 28)
5. CHECK VALVE (SEE DETAIL E ON PAGE 28)
6. FOAM INJECTION HOSE KIT (SEE DETAIL F ON PAGE 28)
7. OPTIONAL ACCESSORIES (SEE PAGE 29).

NOTE:

REAR INTAKE ADAPTER NOT AVAILABLE ON RIGHT SIDE.

ALL DIMENSIONS SHOWN
AS INCH/MILLIMETER

(
INCH
MILLIMETER
)



**SEPARATELY MOUNTED AQUIS 2.5 FOAM PUMP
500 GPM MANIFOLD, LEFT HAND DISCHARGE OVER THE TOP OF PUMP
WITH 71600-8A PUMP DISCHARGE FITTING**

AVAILABLE ON IRON PUMPS WITH 4° ANGLE COMPENSATED BODIES ONLY

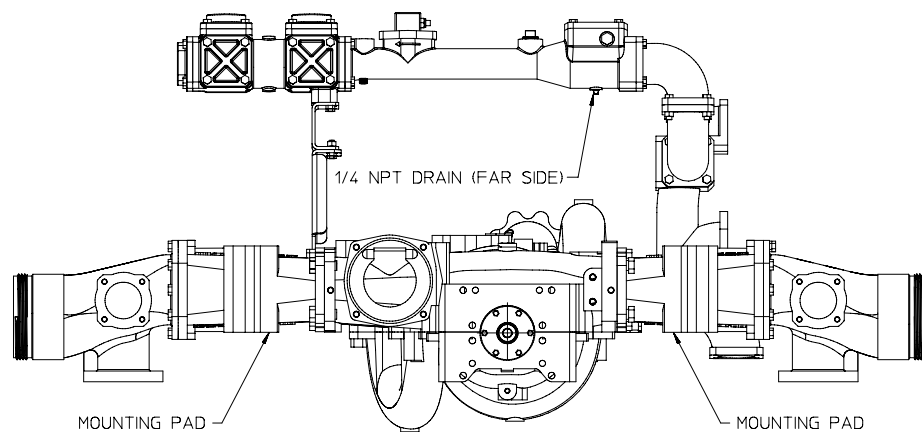
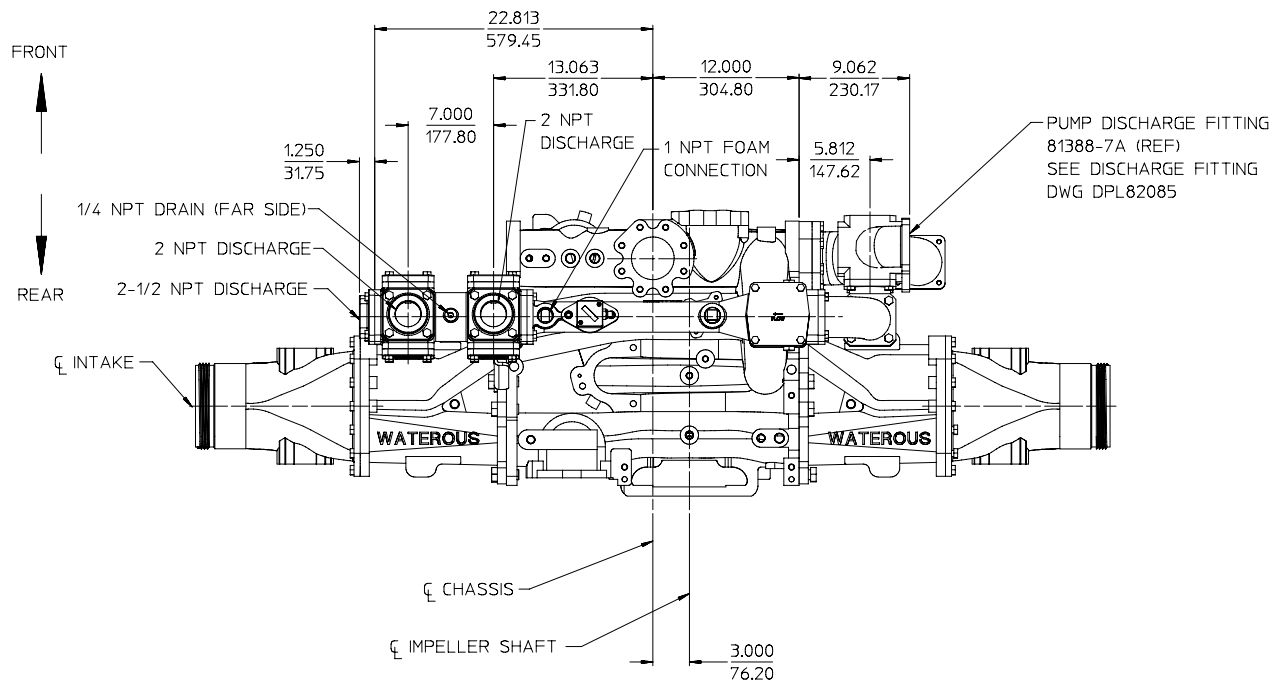
FOAM MANAGER WITH AQUIS 2.5

DPL83079

WATEROUS COMPANY

SOUTH ST. PAUL, MN 55075

PAGE 26 OF 30



**SEPARATELY MOUNTED AQUIS 2.5 FOAM PUMP
500 GPM MANIFOLD, LEFT HAND DISCHARGE OVER THE TOP OF PUMP
WITH 81388-7A PUMP DISCHARGE FITTING**

AVAILABLE ON IRON PUMPS WITH 4° ANGLE COMPENSATED BODIES ONLY

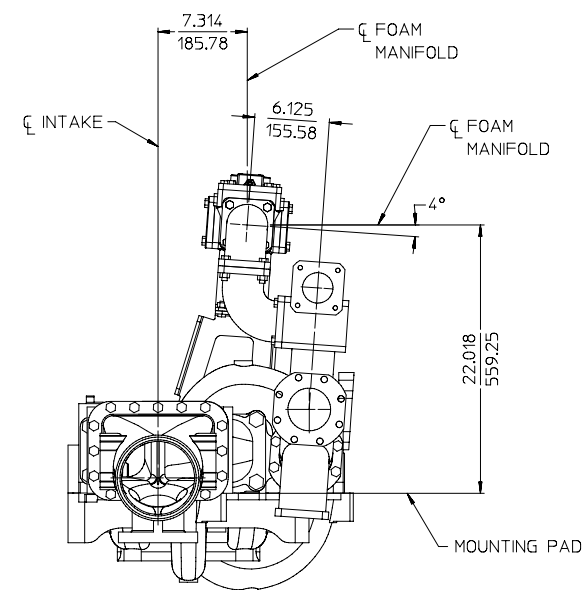
THE FOLLOWING ITEMS SHIPPED LOOSE:

1. INSTRUCTION PLATE. (SEE DETAIL A ON PAGE 28).
2. OIT CONTROL MODULE (SEE DETAIL B ON PAGE 28).
3. INLET LINE STRAINER WITH NIPPLE (SEE DETAIL C ON PAGE 28).
4. AQUIS FOAM PUMP (SEE DETAIL D ON PAGE 28)
5. CHECK VALVE (SEE DETAIL E ON PAGE 28)
6. FOAM INJECTION HOSE KIT (SEE DETAIL F ON PAGE 28)
7. OPTIONAL ACCESSORIES (SEE PAGE 29).

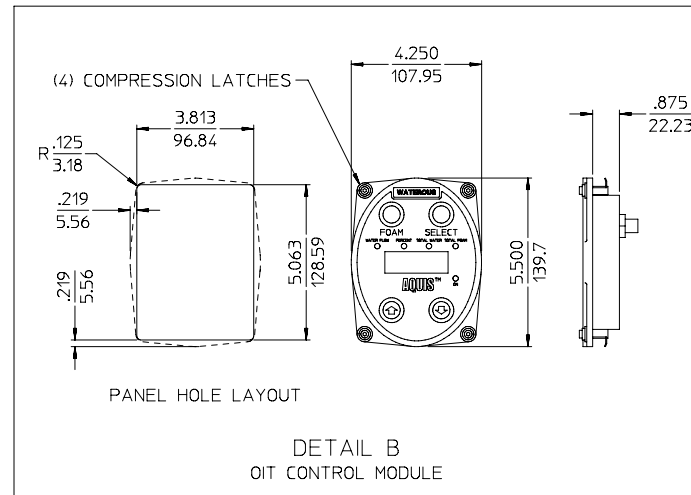
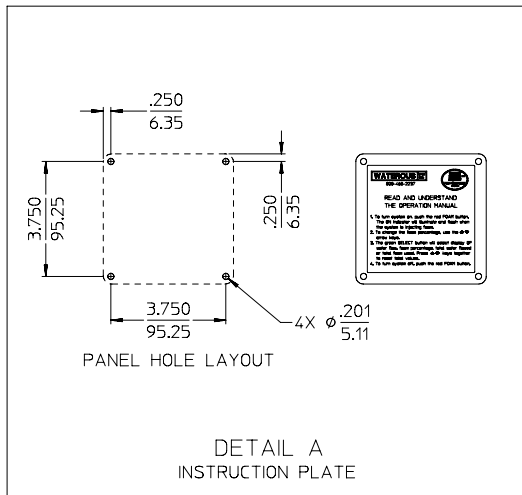
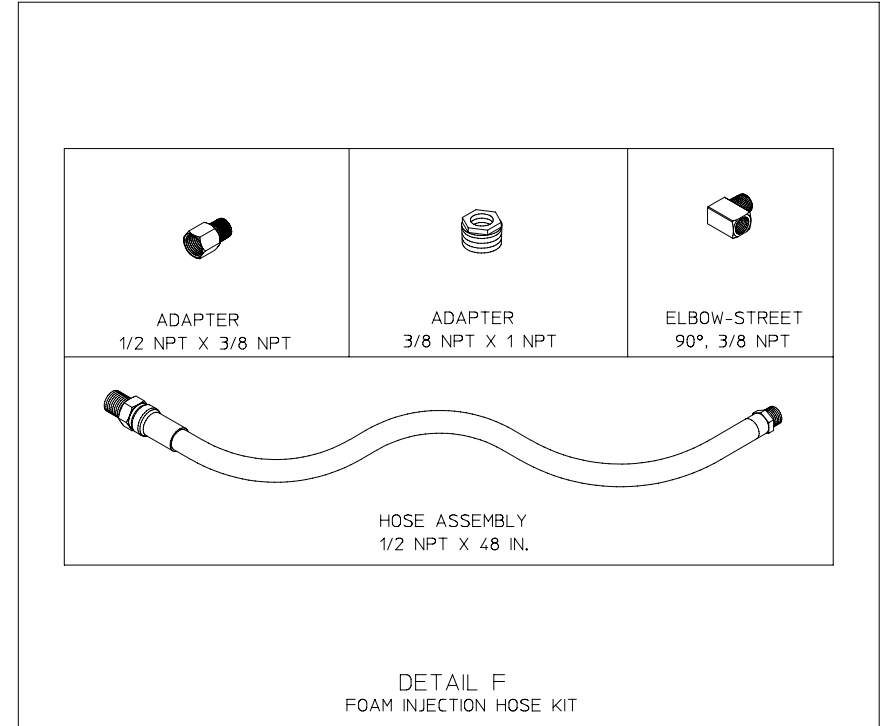
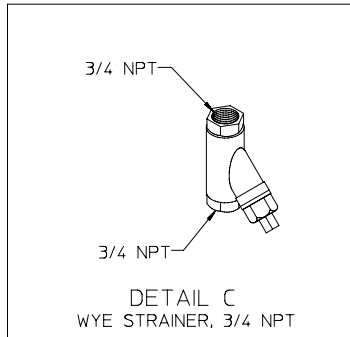
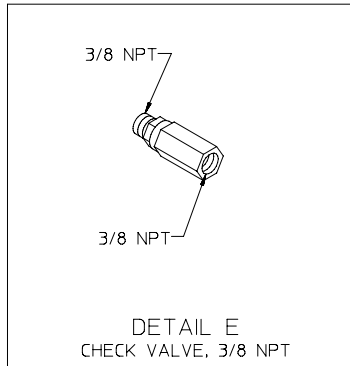
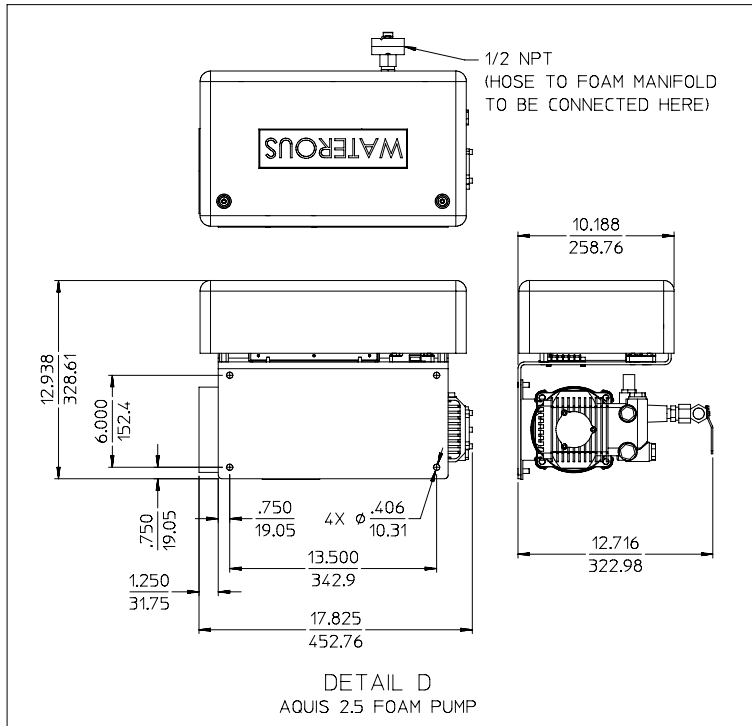
NOTE:

REAR INTAKE ADAPTER NOT AVAILABLE ON RIGHT SIDE.

ALL DIMENSIONS SHOWN
AS INCH/MILLIMETER
($\frac{\text{INCH}}{\text{MILLIMETER}}$)



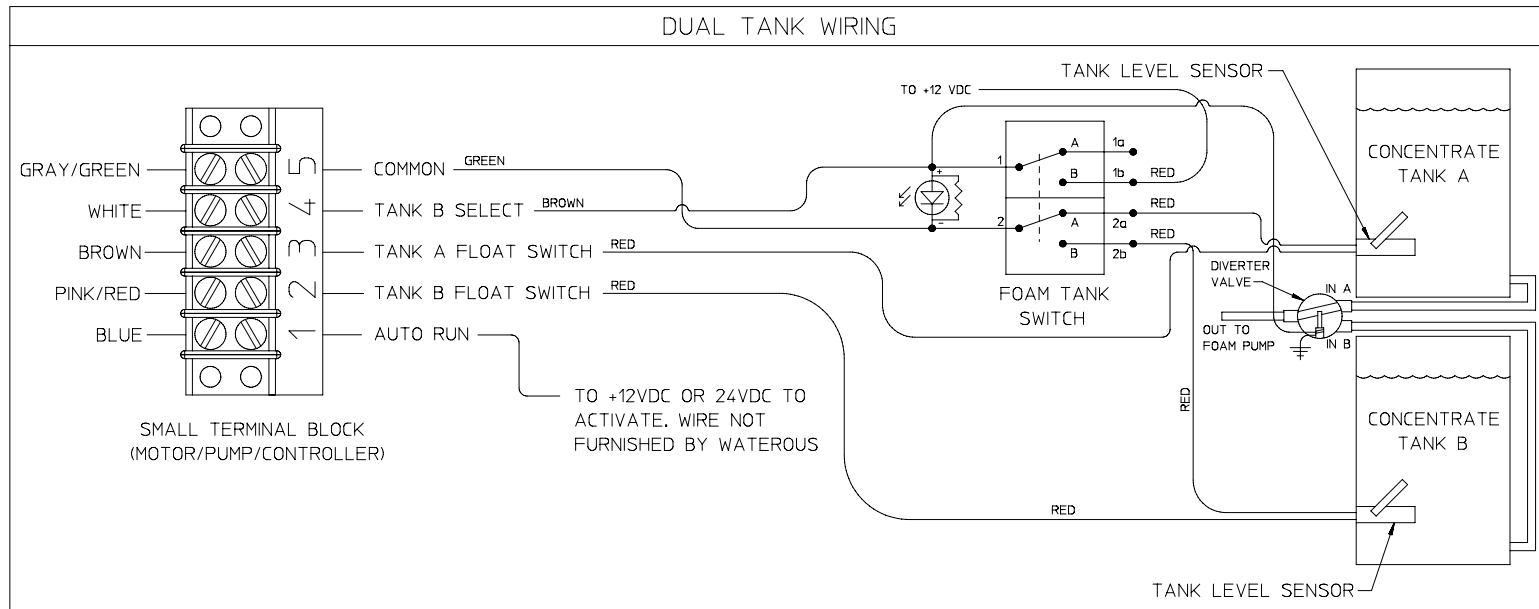
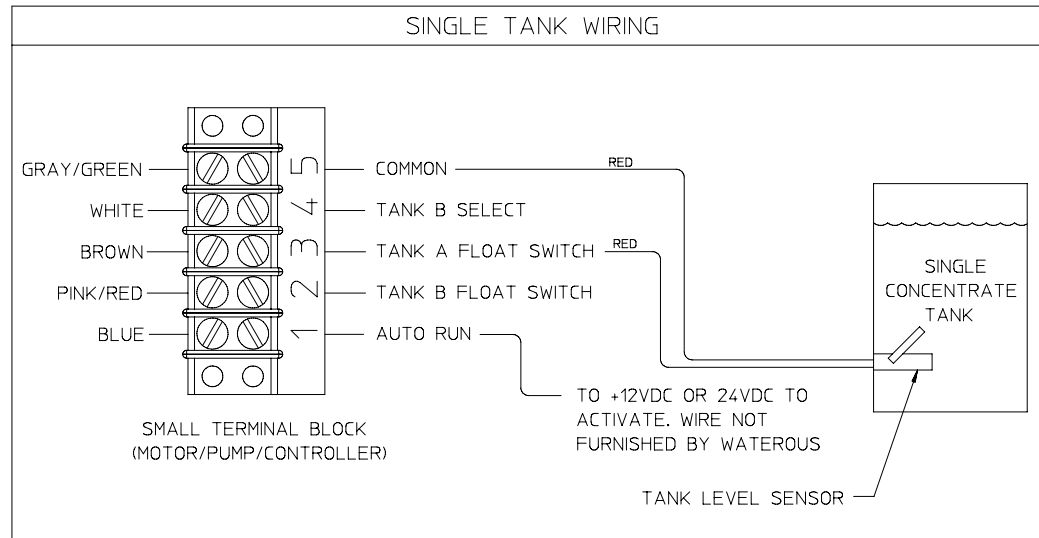
FOAM MANAGER WITH AQUIS 2.5
DPL83079
WATEROUS COMPANY
SOUTH ST. PAUL, MN 55075
PAGE 27 OF 30



ITEMS SHIPPED LOOSE
FOR PUMPS WHERE FOAM PUMP IS SEPARATELY MOUNTED

ALL DIMENSIONS SHOWN
AS INCH/MILLIMETER
(INCH)
(MILLIMETER)

FOAM MANAGER WITH AQUIS 2.5
DPL83079
WATEROUS COMPANY
SOUTH ST. PAUL, MN 55075
PAGE 28 OF 30



TANK LEVEL SWITCH WIRING