

TC22 Series P.T.O. with Eclipse ES™ CAFS
Dimensional Drawings

Item		See Page	
		Input and Output Shaft	Input Shaft Only
TC22 Models		2	3
Ratio and Drop Dimensions		4	4
Mounting Bracket Attachment Locations		5	5
Compressor	Electrical and Plumbing Schematics	6	6
	Components Shipped Loose	7, 8	7, 8

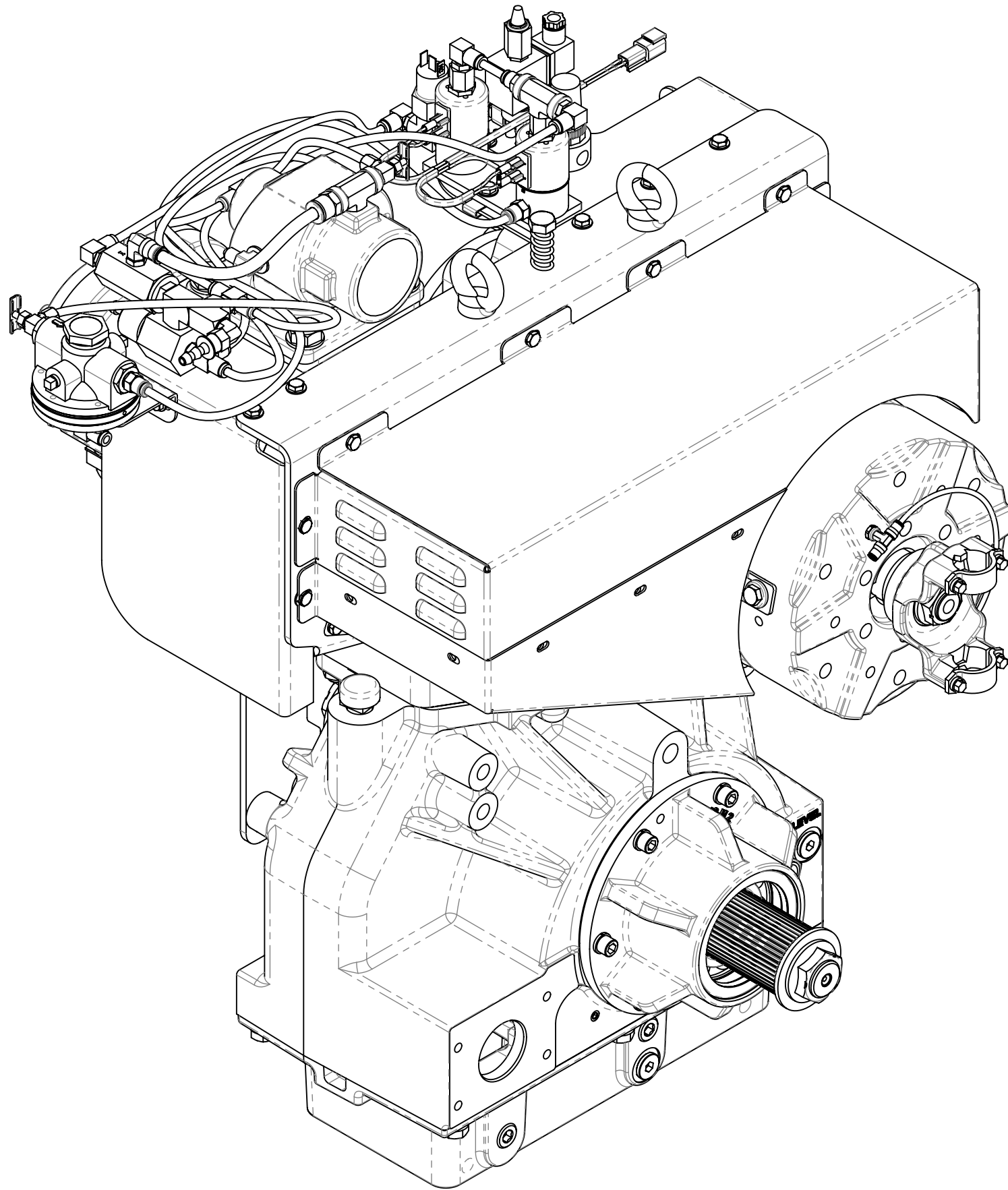
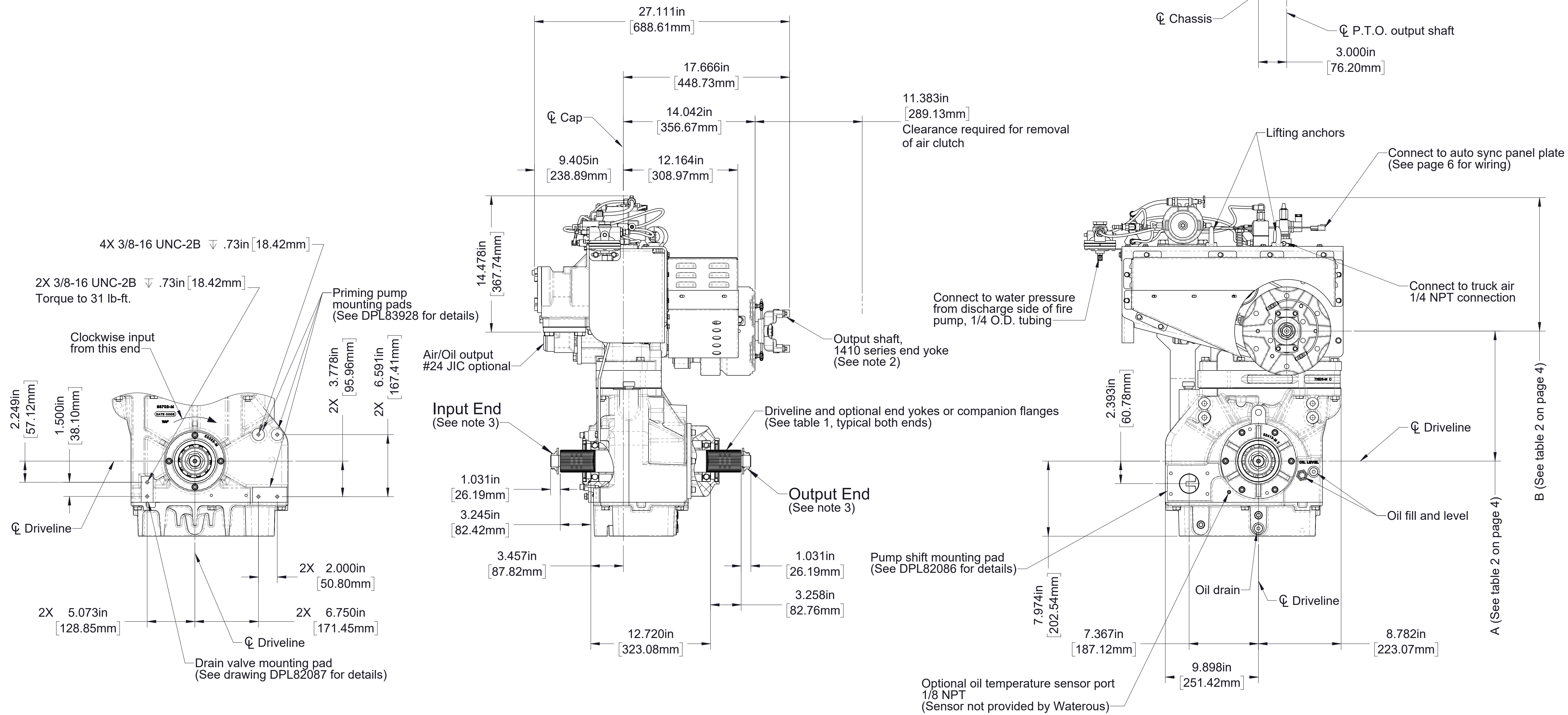


Table 1 - Available Drivelines / Models								
Driveline			Optional End Yokes and Companion Flanges Available from Waterous (See DPL83861 for Dimensions)				PTO Models	
Type	Size	Spline	Yoke		Cross and Bearing Kit	Companion Flange		TC22B TC22C TC22D TC22E TC22F
			Spicer Series	Part Number		Spicer Series	Part Number	
Extra Heavy Duty	2.35 Inch	2.35-46T Involute	1710	V 2837	V 2839	1480/1610	V 3719	
			1810	V 2838	V 2840	1710/1810	V 3619	
			SPL140	V 3388	V 3389	--	--	

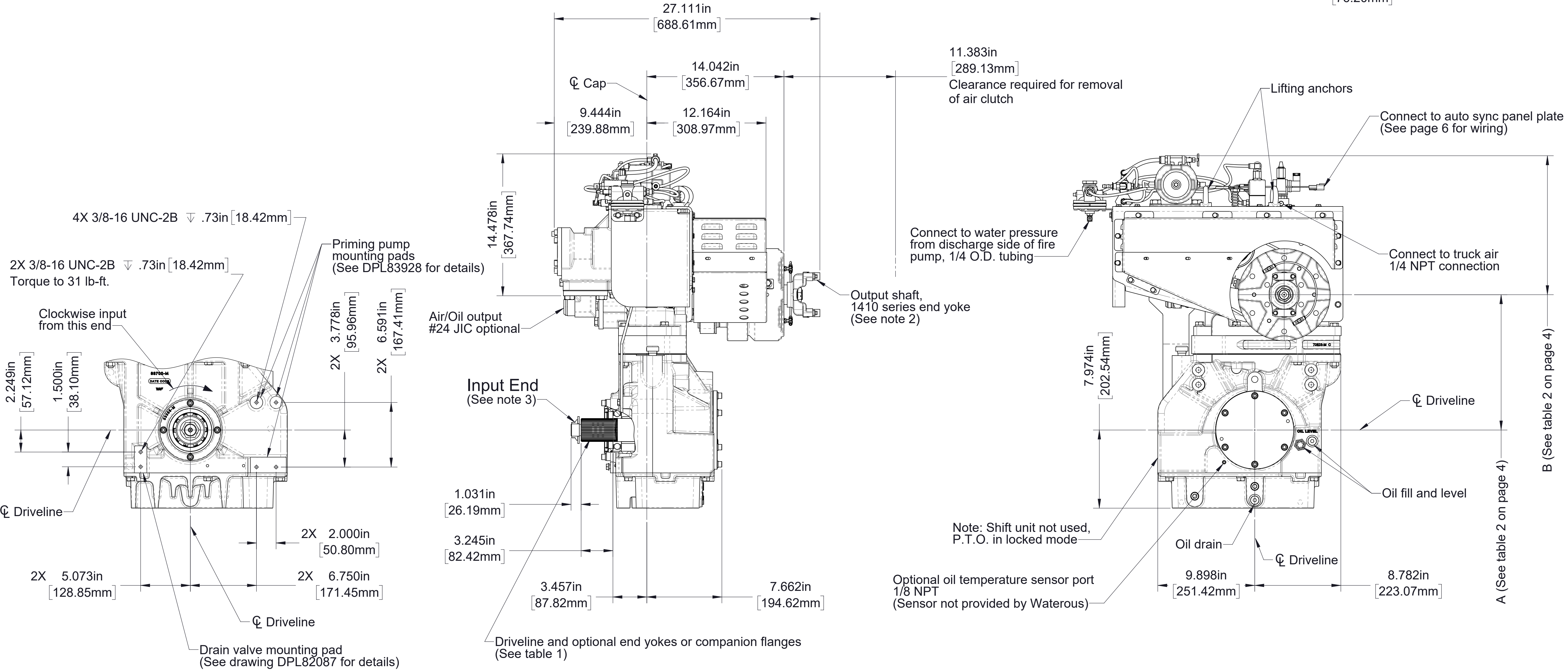
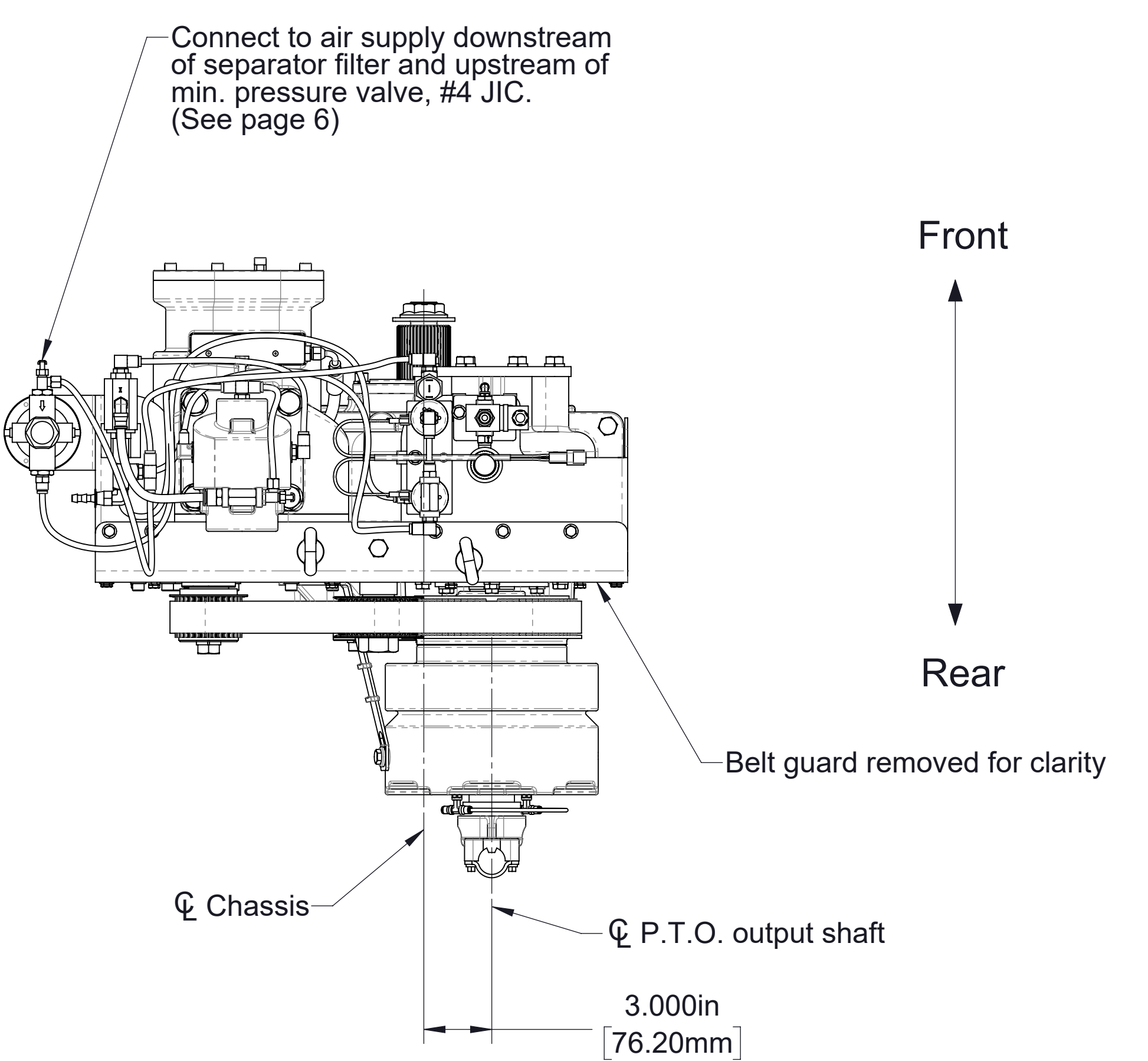
Notes:
1. See table 2 on page 4 for ratios.
2. Maximum drive shaft length: 45 inches. Maximum u-joint angle: 3°.
3. 1-1/4-18 UNEF nut with washer. Torque to 475-525 lb-ft on both input and output ends.



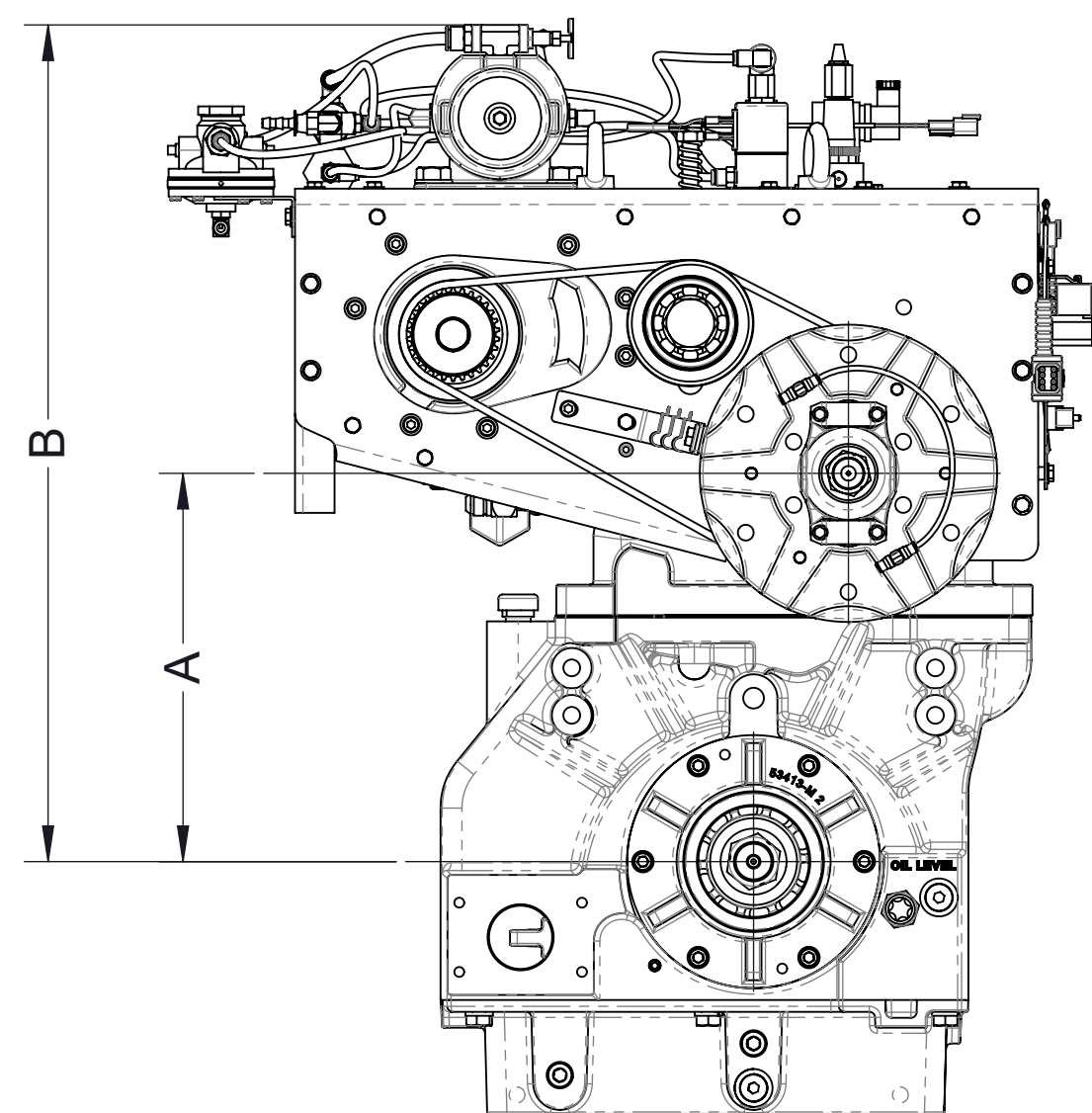
TCC22 Series with Eclipse ES CAFS
Input and Output Shaft
Clutch and yoke mounted on rear (output shaft) side of P.T.O.
(Clockwise input, model TC22C, 2.27 ratio shown)

Table 1 - Available Drivelines / Models								
Driveline			Optional End Yokes and Companion Flanges Available from Waterous (See DPL83861 for Dimensions)					PTO Models
Type	Size	Spline	Yoke		Cross and Bearing Kit	Companion Flange		TC22B TC22C TC22D TC22E TC22F
			Spicer Series	Part Number		Spicer Series	Part Number	
Extra Heavy Duty	2.35 Inch	2.35-46T Involute	1710	V 2837	V 2839	1480/1610	V 3719	
			1810	V 2838	V 2840	1710/1810	V 3619	
			SPL140	V 3388	V 3389	--	--	

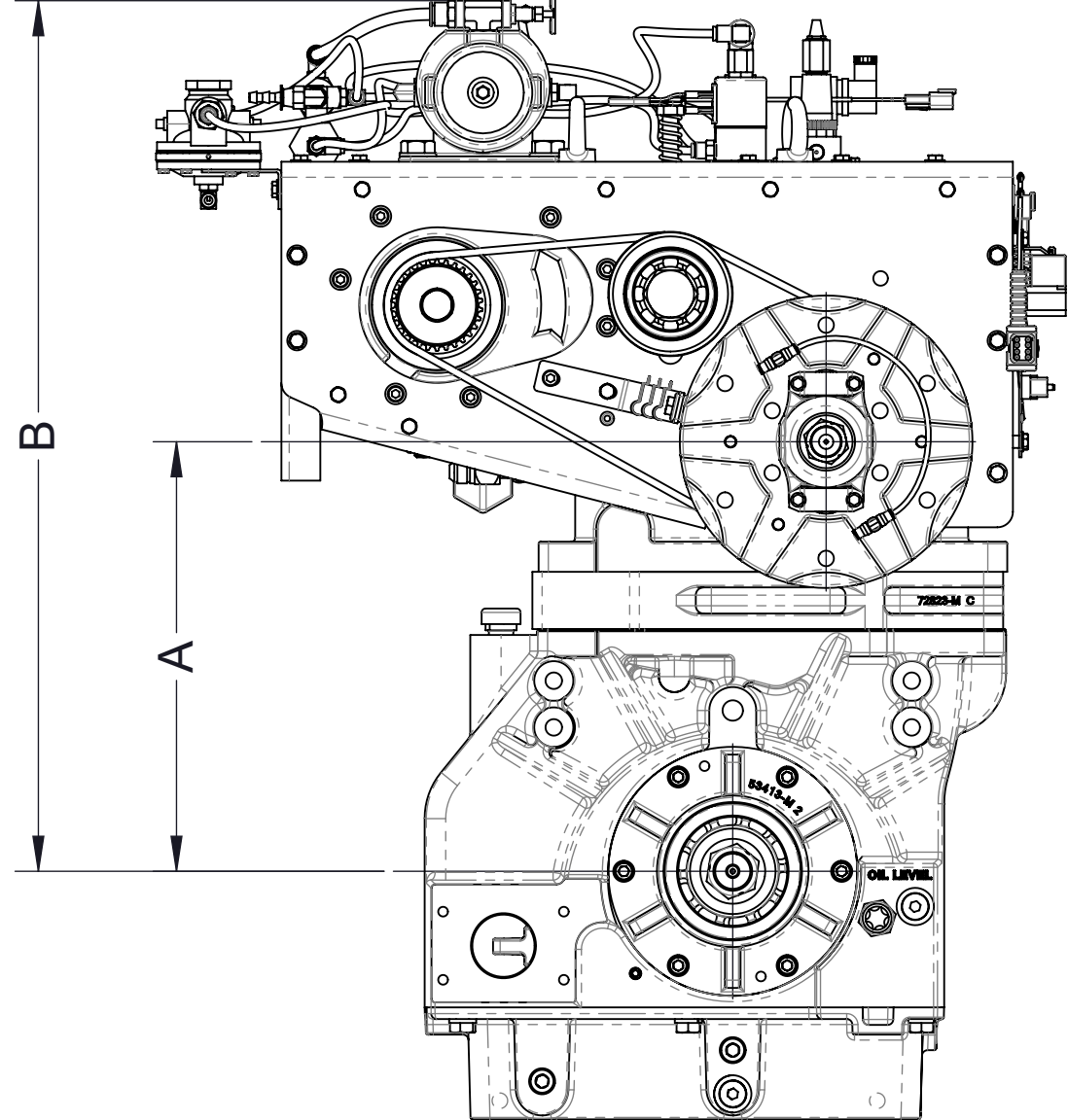
Notes:
1. See table 2 on page 4 for ratios.
2. Maximum drive shaft length: 45 inches. Maximum u-joint angle: 3°.
3. 1-1/4-18 UNEF nut with washer. Torque to 475-525 lb-ft on input end.



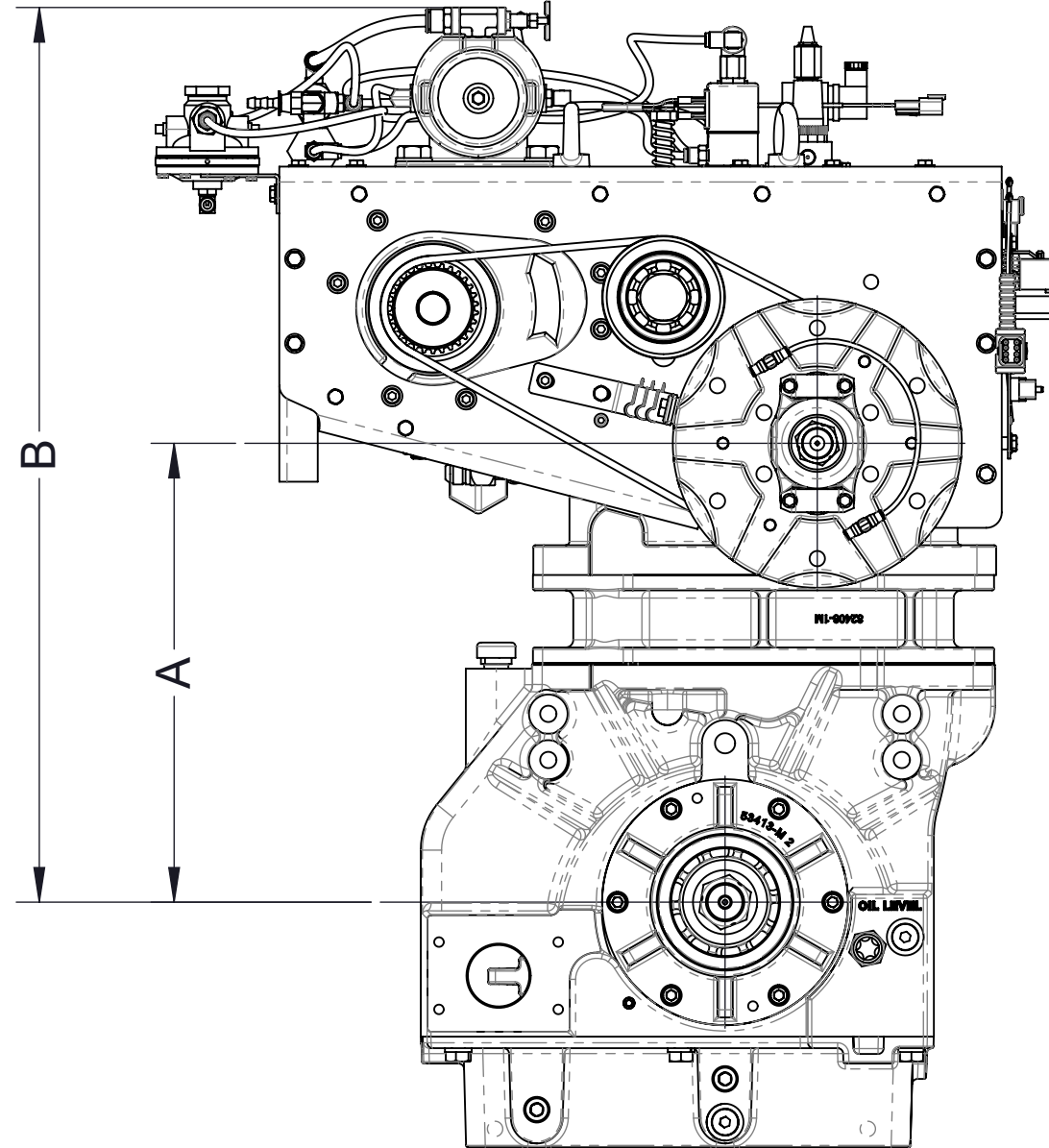
TCC22 Series with Eclipse ES CAFS
Input Shaft Only
Clutch and yoke mounted on rear (output shaft) side of P.T.O.
(Clockwise input, model TC22C, 2.27 ratio shown)



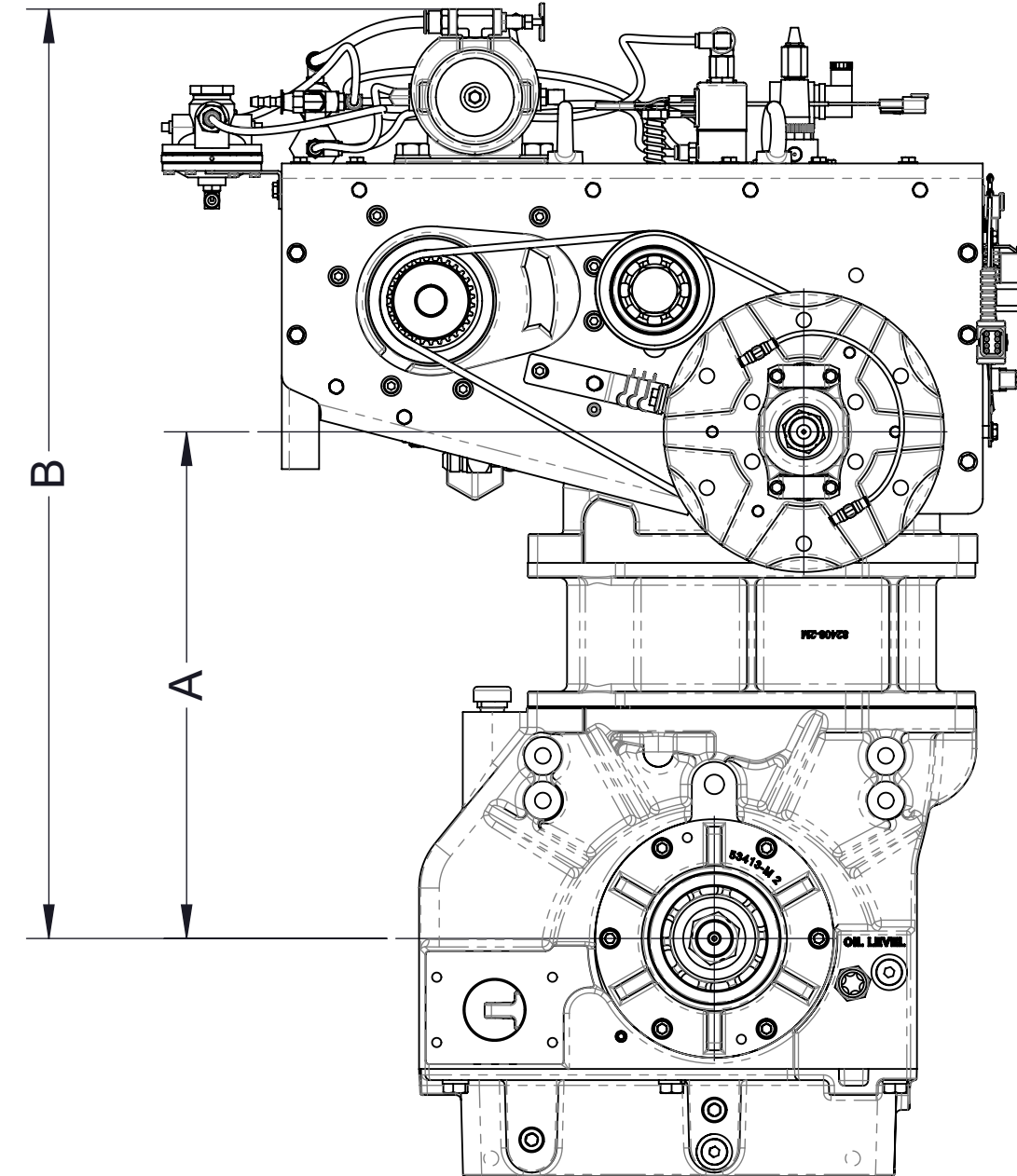
TC22B Model
(2.27 ratio shown)



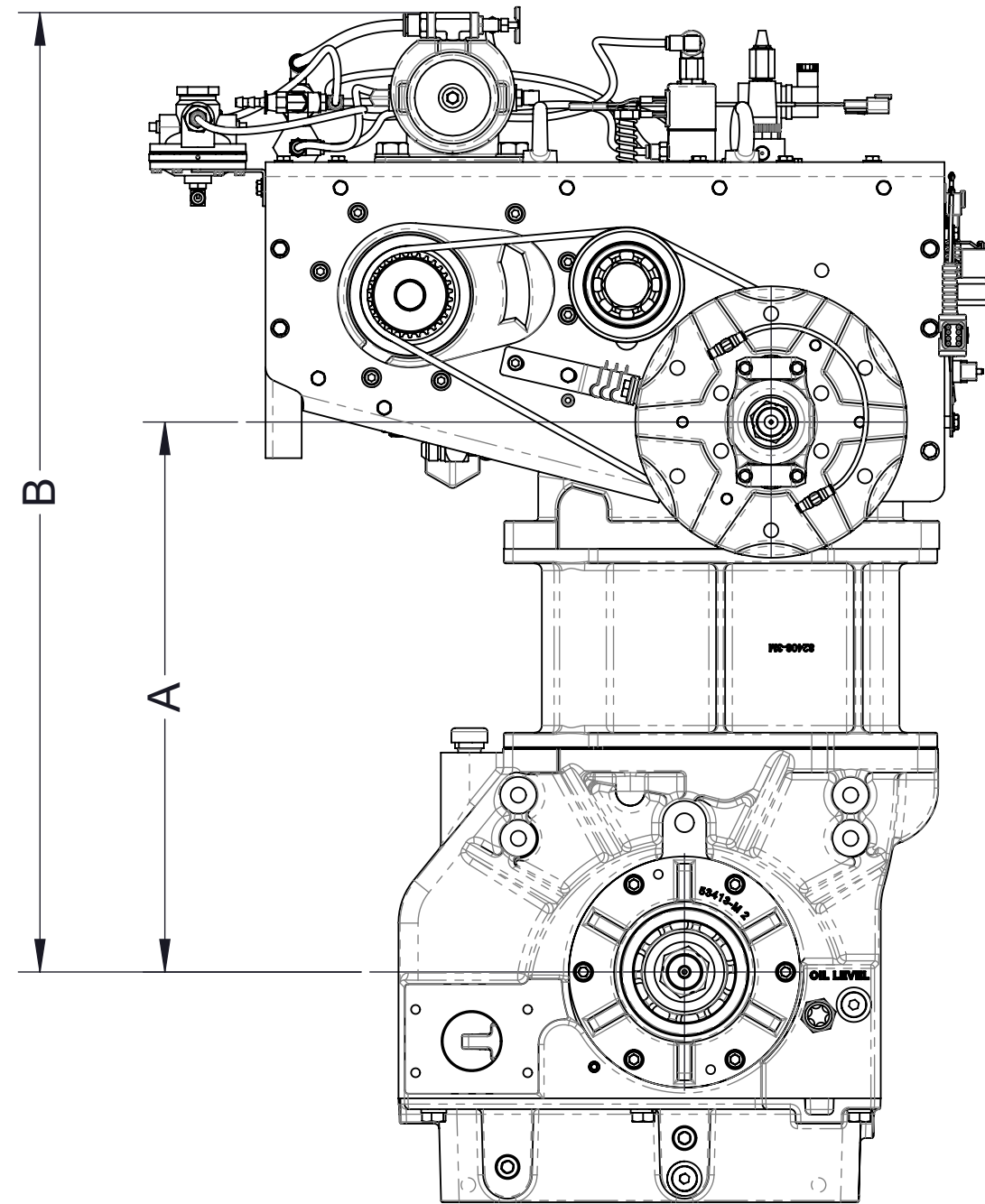
TC22C Model
(2.27 ratio shown)



TC22D Model
(2.27 ratio shown)



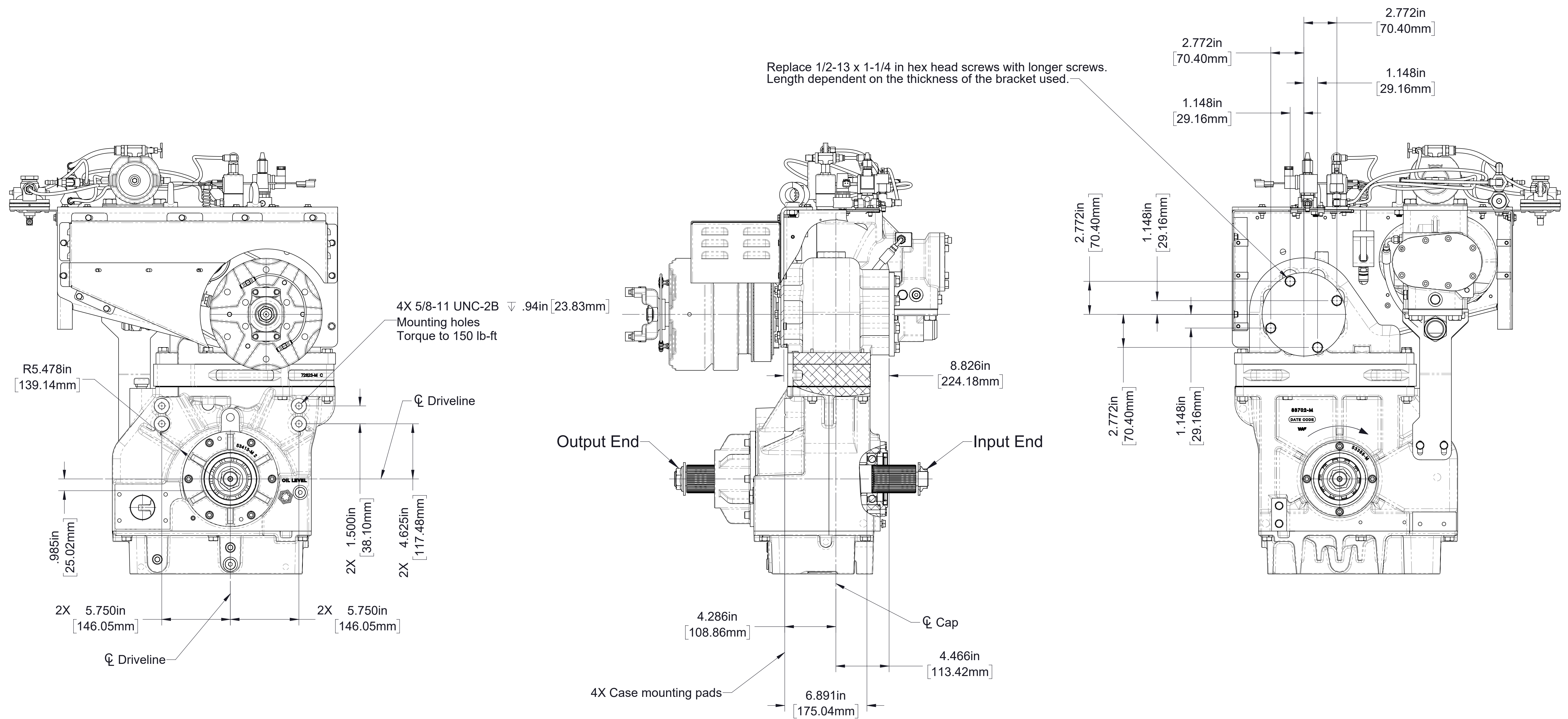
TC22E Model
(2.27 ratio shown)



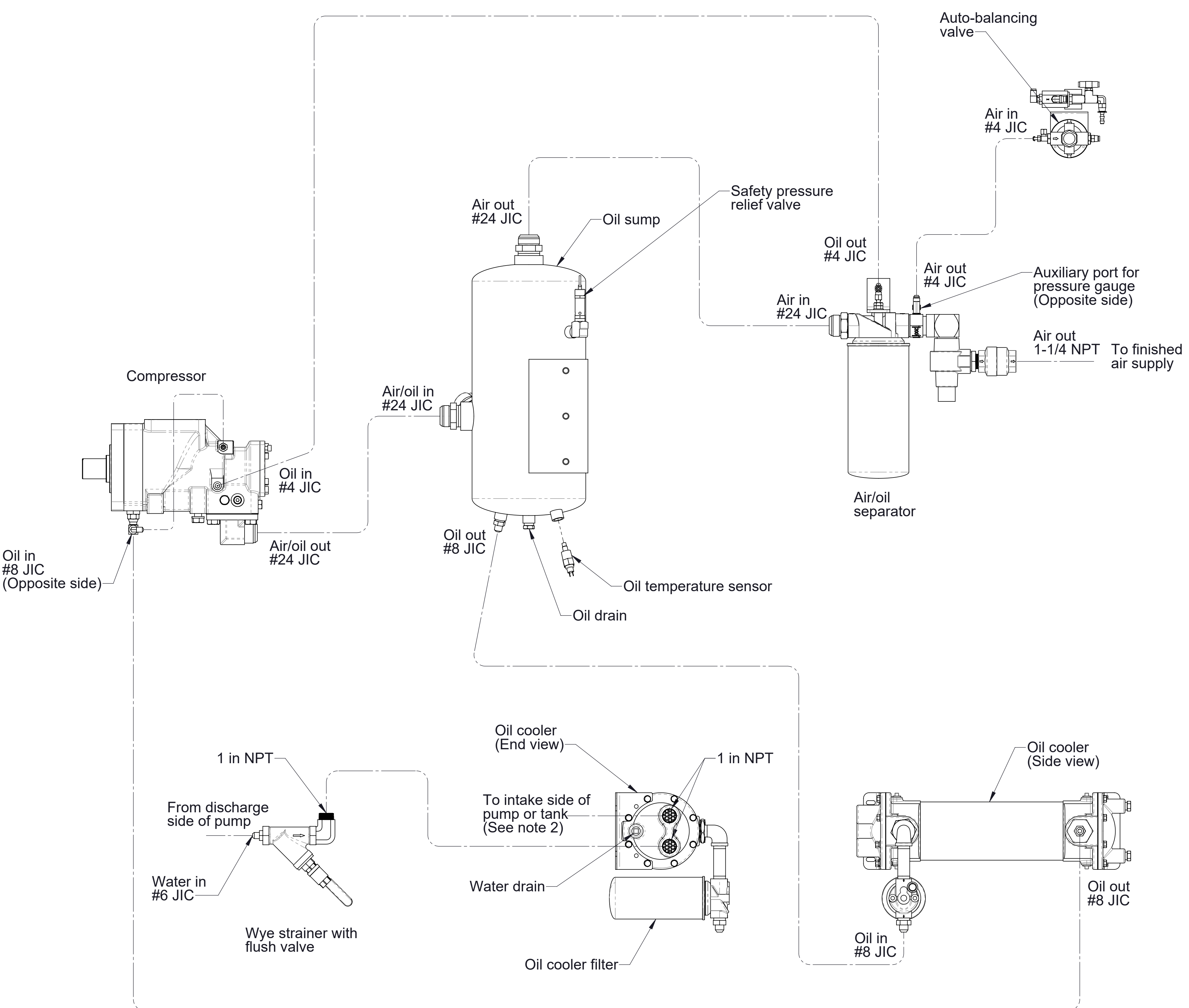
TC22F Model
(2.27 ratio shown)

Table 2 - Available Ratios										
Drive to Driven Ratio	TC22B		TC22C		TC22D		TC22E		TC22F	
	Dimension A	Dimension B	Dimension A	Dimension B	Dimension A	Dimension B	Dimension A	Dimension B	Dimension A	Dimension B
1.58	12.205/310.01	26.028/661.12	13.756/349.40	27.579/700.51	14.788/375.62	28.611/726.73	16.830/427.48	30.653/778.59	18.861/479.07	32.684/830.18
1.69	12.290/312.17	26.113/663.28	13.839/351.51	27.662/702.62	14.876/377.85	28.699/728.96	16.932/429.84	30.746/780.95	18.961/481.61	32.784/832.72
1.79	11.958/303.73	25.781/654.84	14.045/356.74	27.868/707.85	15.072/382.83	28.895/733.94	17.127/435.03	30.950/786.14	19.168/468.87	32.991/837.98
1.88	12.129/308.08	25.952/659.19	13.690/347.73	27.513/698.84	14.717/373.81	28.540/724.92	16.773/426.03	30.596/777.14	18.809/477.75	32.632/828.86
1.97	12.306/312.57	26.129/663.68	13.870/352.30	27.693/703.41	14.912/378.76	28.735/729.87	16.970/431.04	30.793/782.15	19.012/482.90	32.835/834.01
2.03	11.896/302.16	25.719/653.27	13.984/355.19	27.807/706.30	15.028/381.71	28.851/732.82	17.086/433.98	30.909/785.09	19.132/485.95	32.955/837.06
2.27	12.240/310.90	26.063/662.01	13.811/350.80	27.634/701.91	14.856/377.34	28.679/728.45	16.920/429.77	30.743/780.88	18.971/481.86	32.794/832.97

All dimensions shown as inch/millimeter

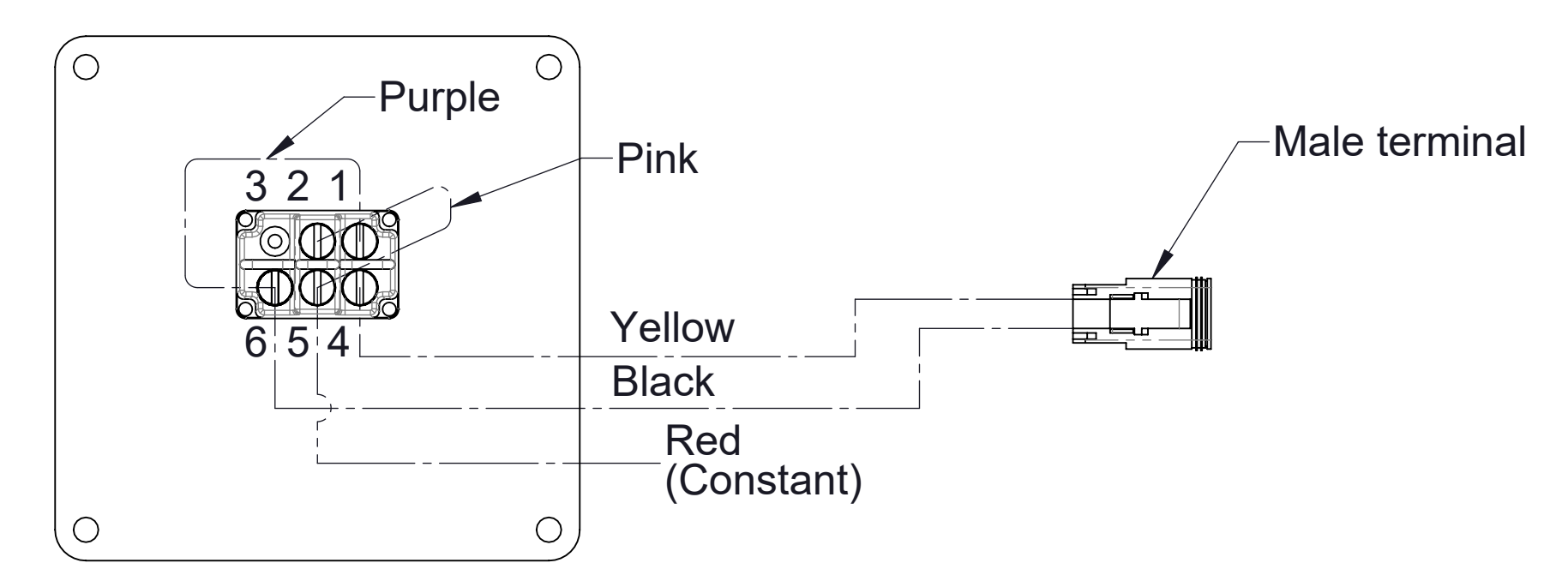


Mounting Bracket Attachment Locations

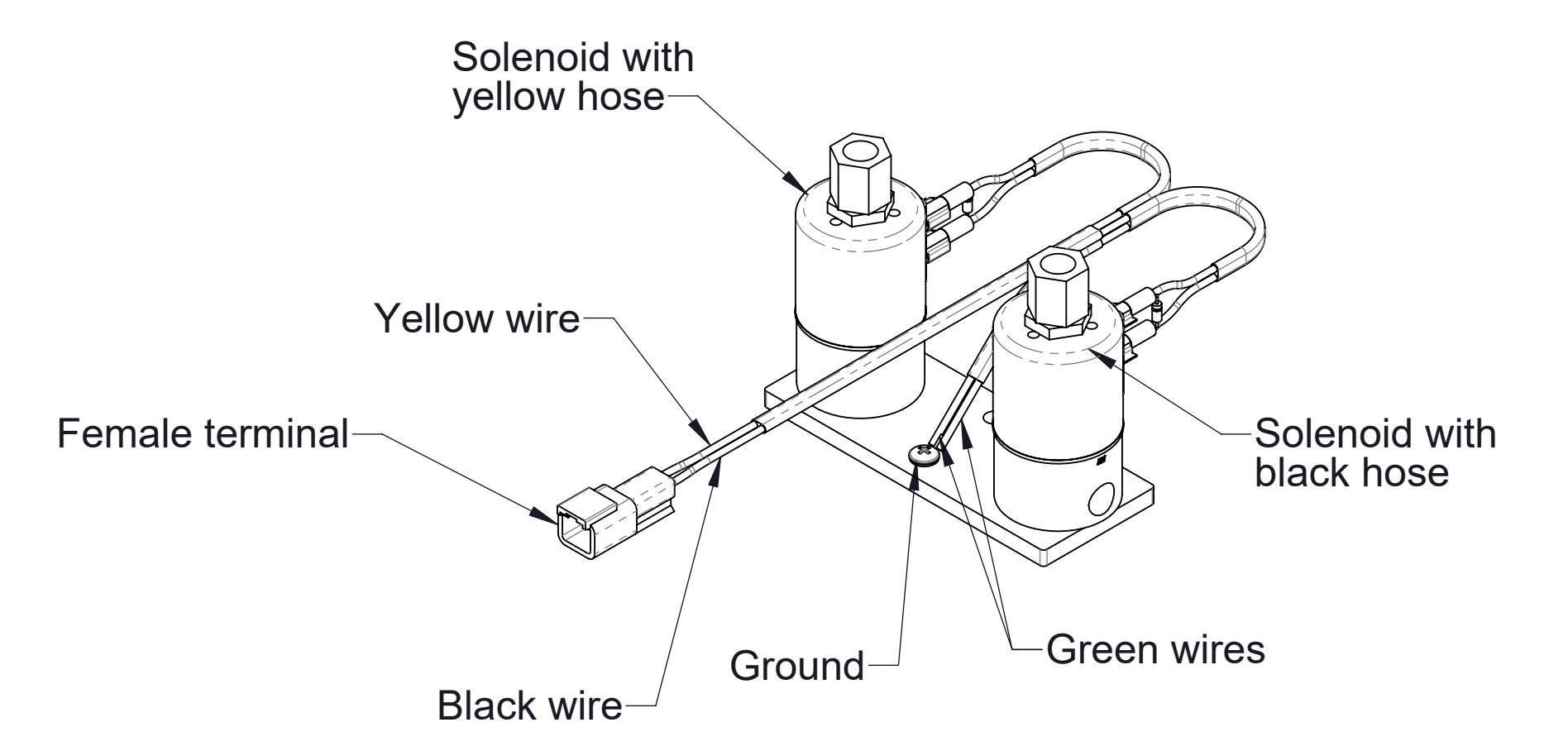


Notes:
 1. Use hydraulic hoses only.
 2. Caution: Do not install shut off valve in cooling water line. Line out of oil cooler to be plumbed either to pump intake or to water tank with check valve.

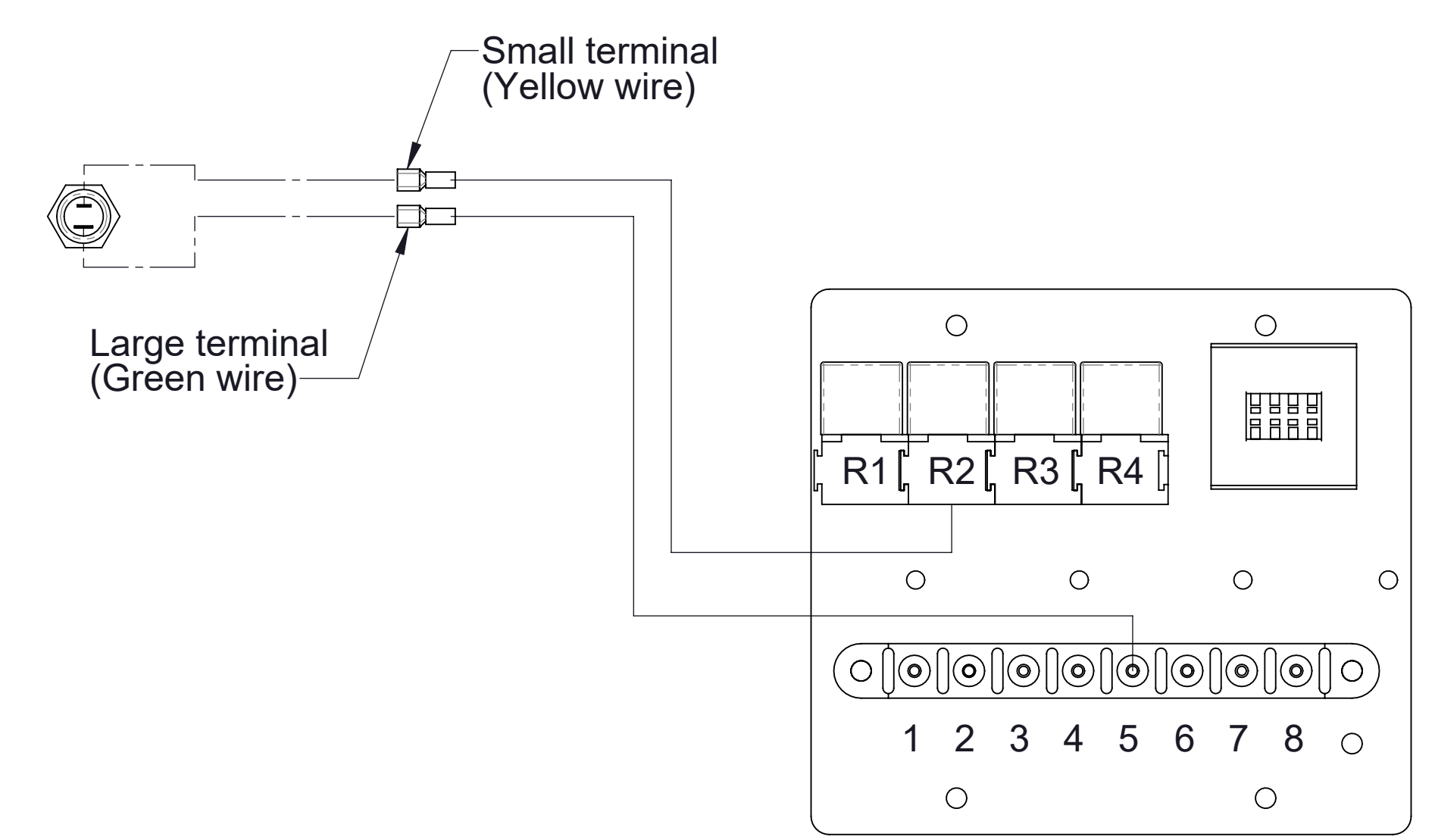
Plumbing Schematic



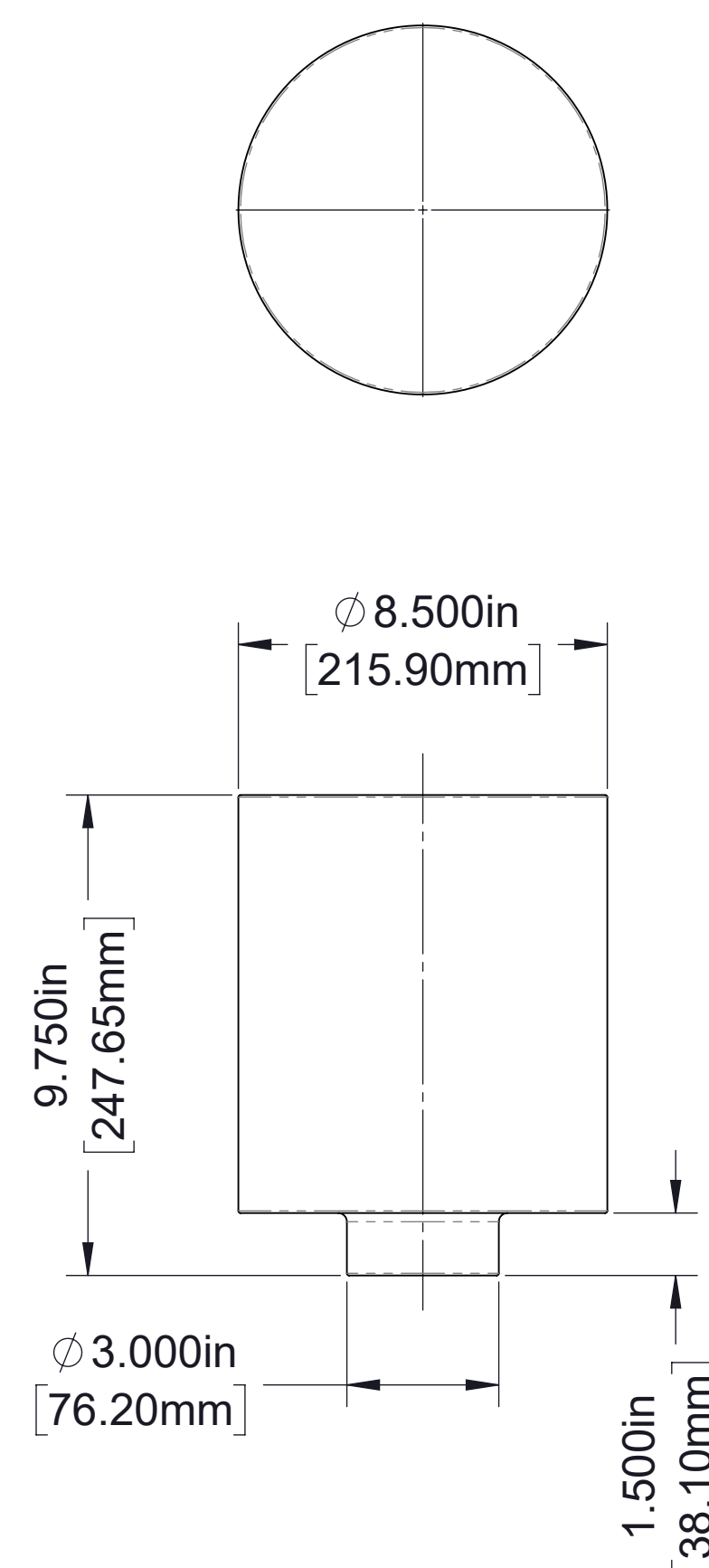
Auto Sync Panel Wiring Schematic



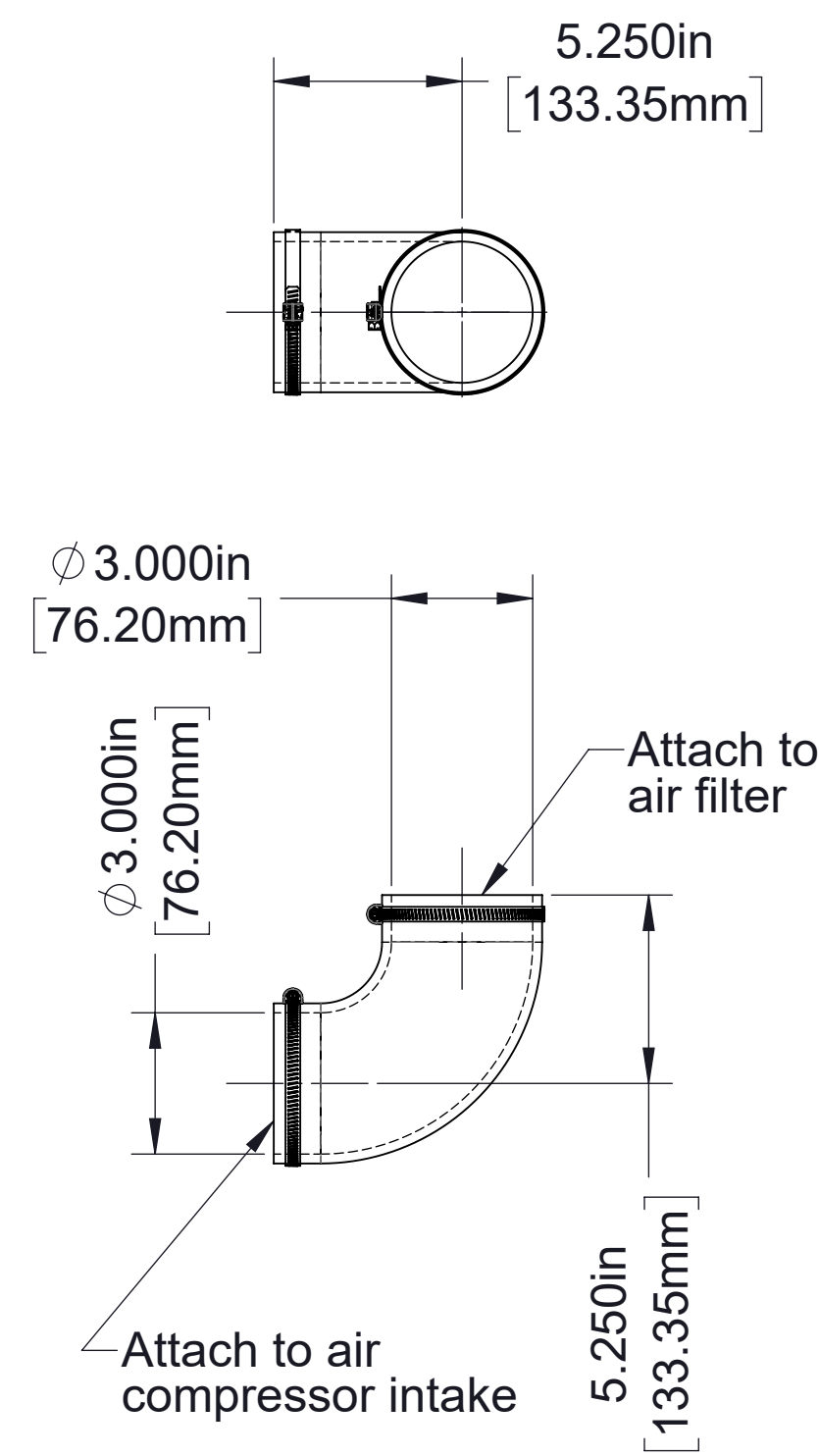
Auto Sync Solenoid Wiring Schematic



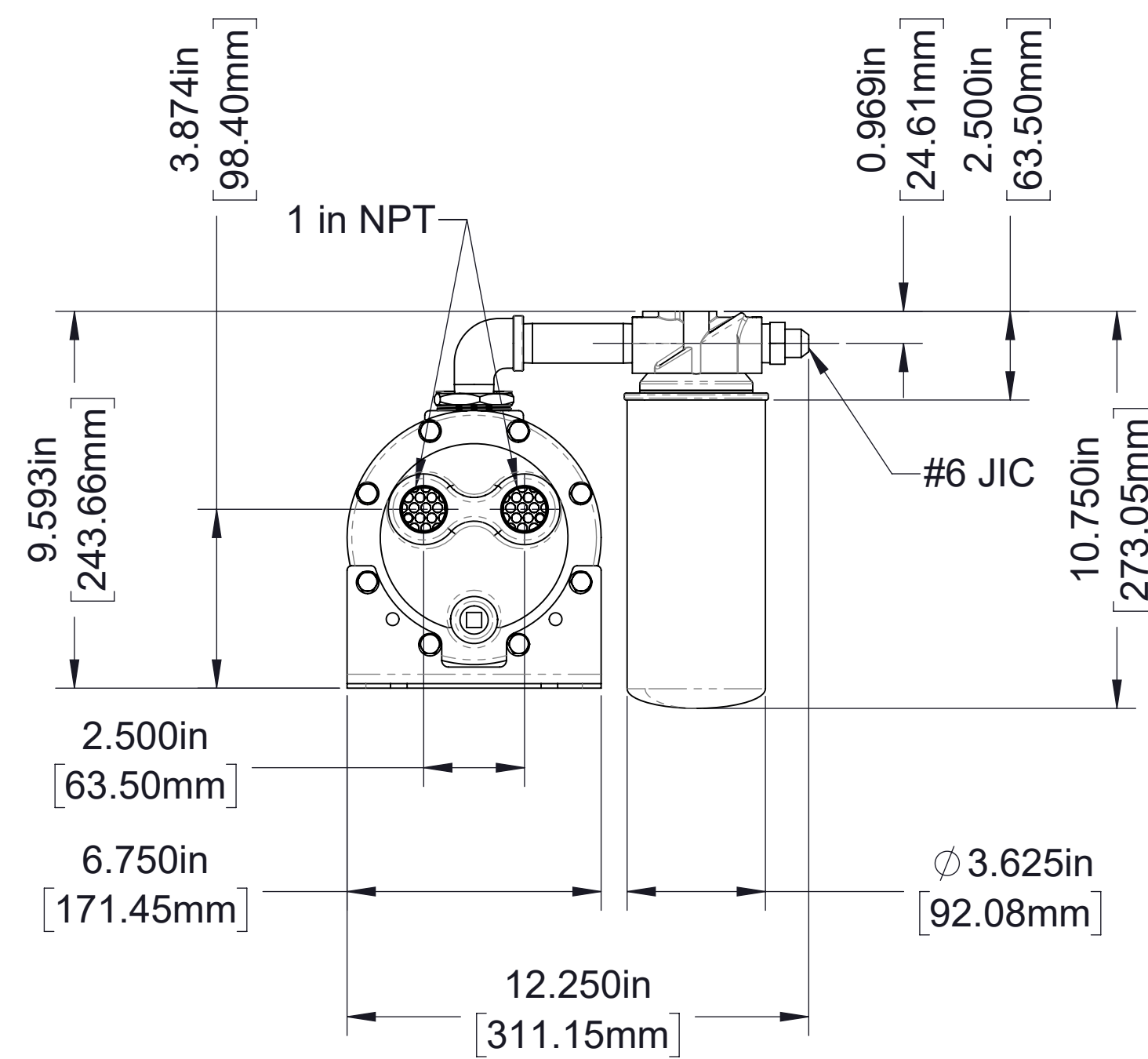
Oil Temperature Sensor Wiring Schematic



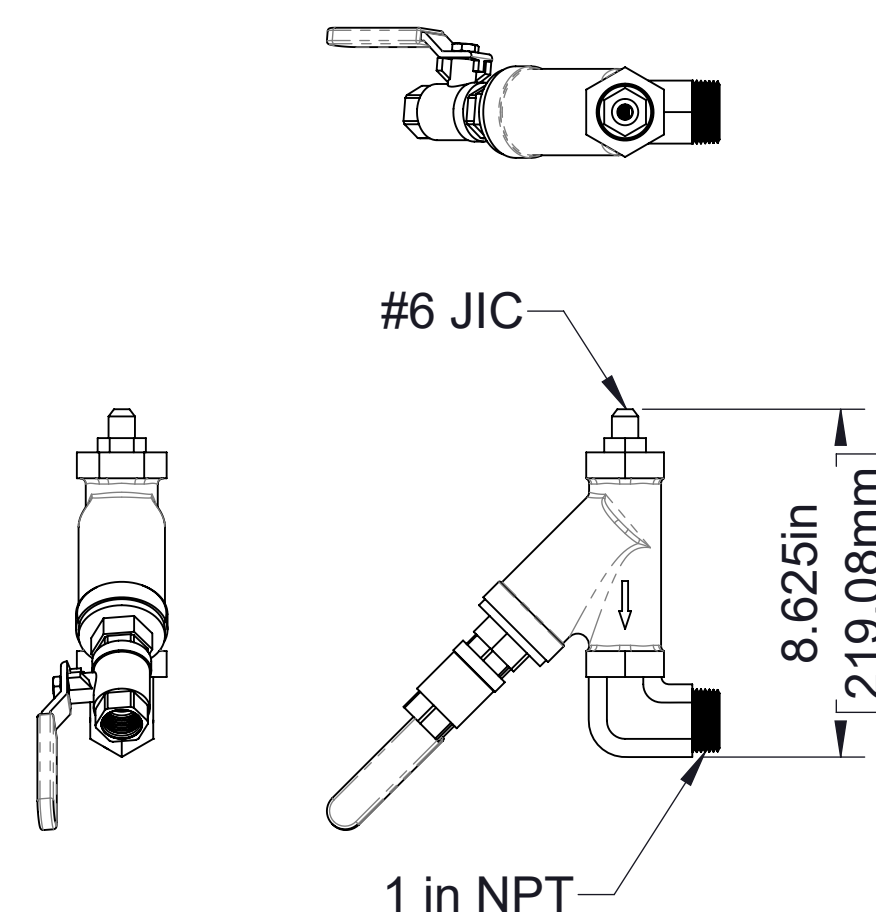
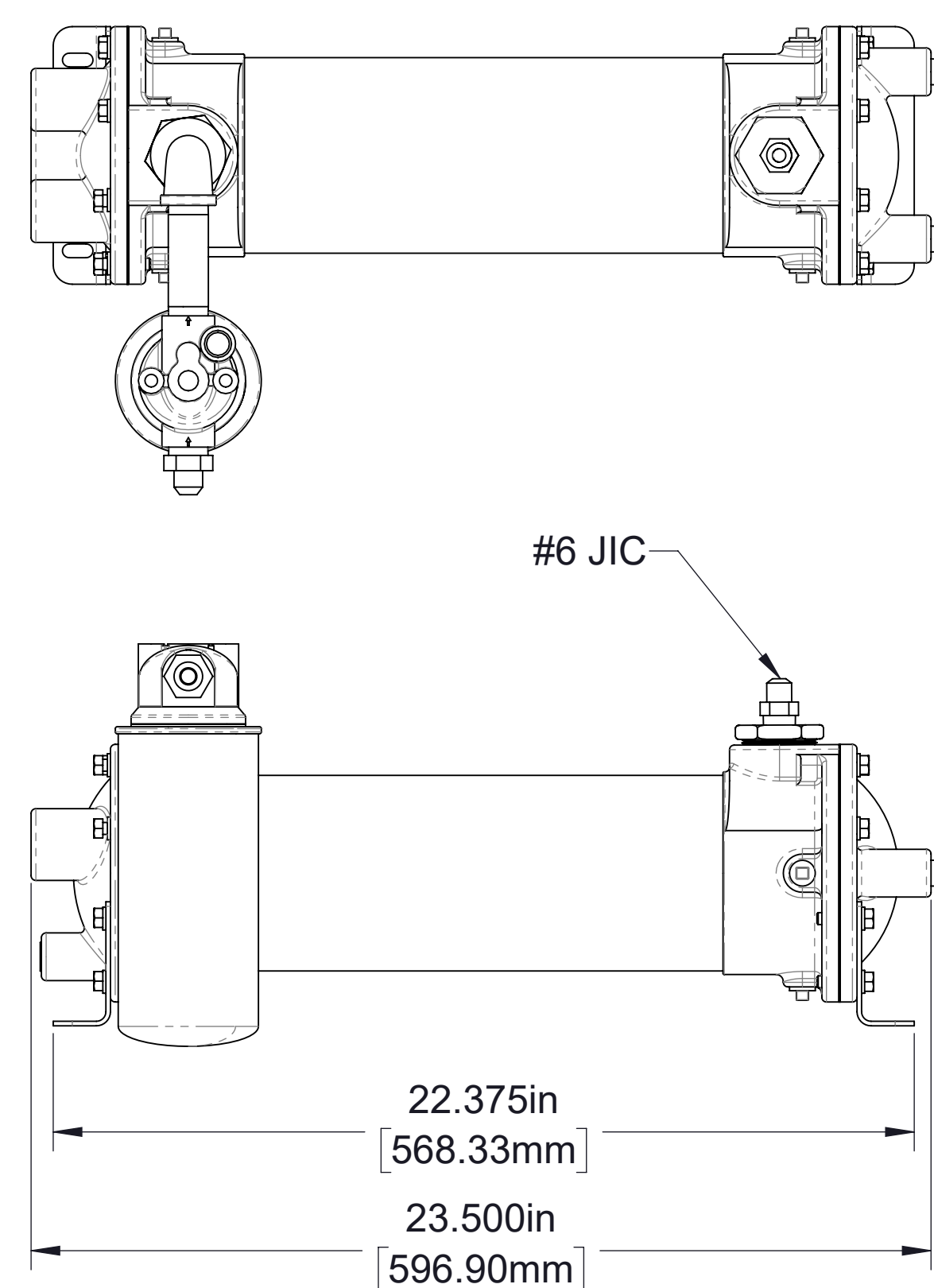
Air Filter



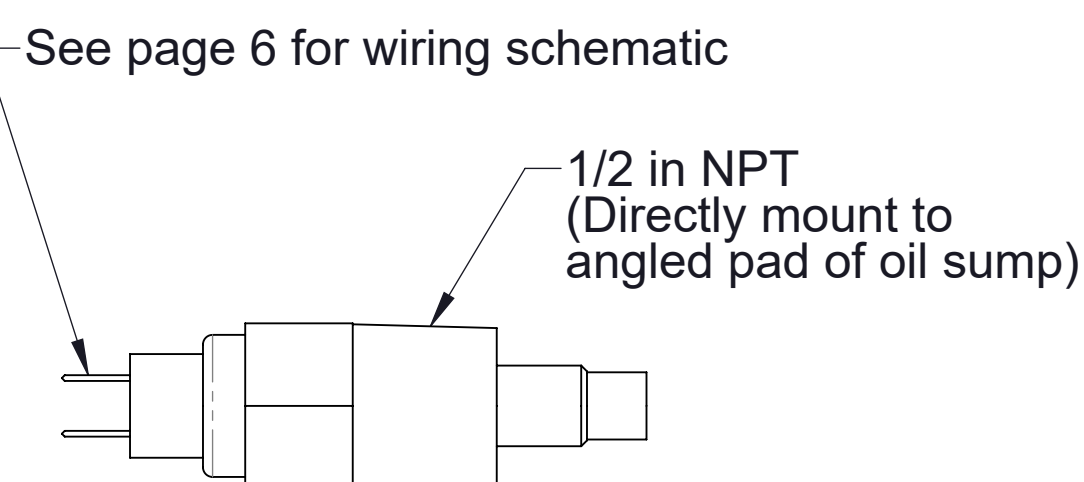
Air Filter Elbow



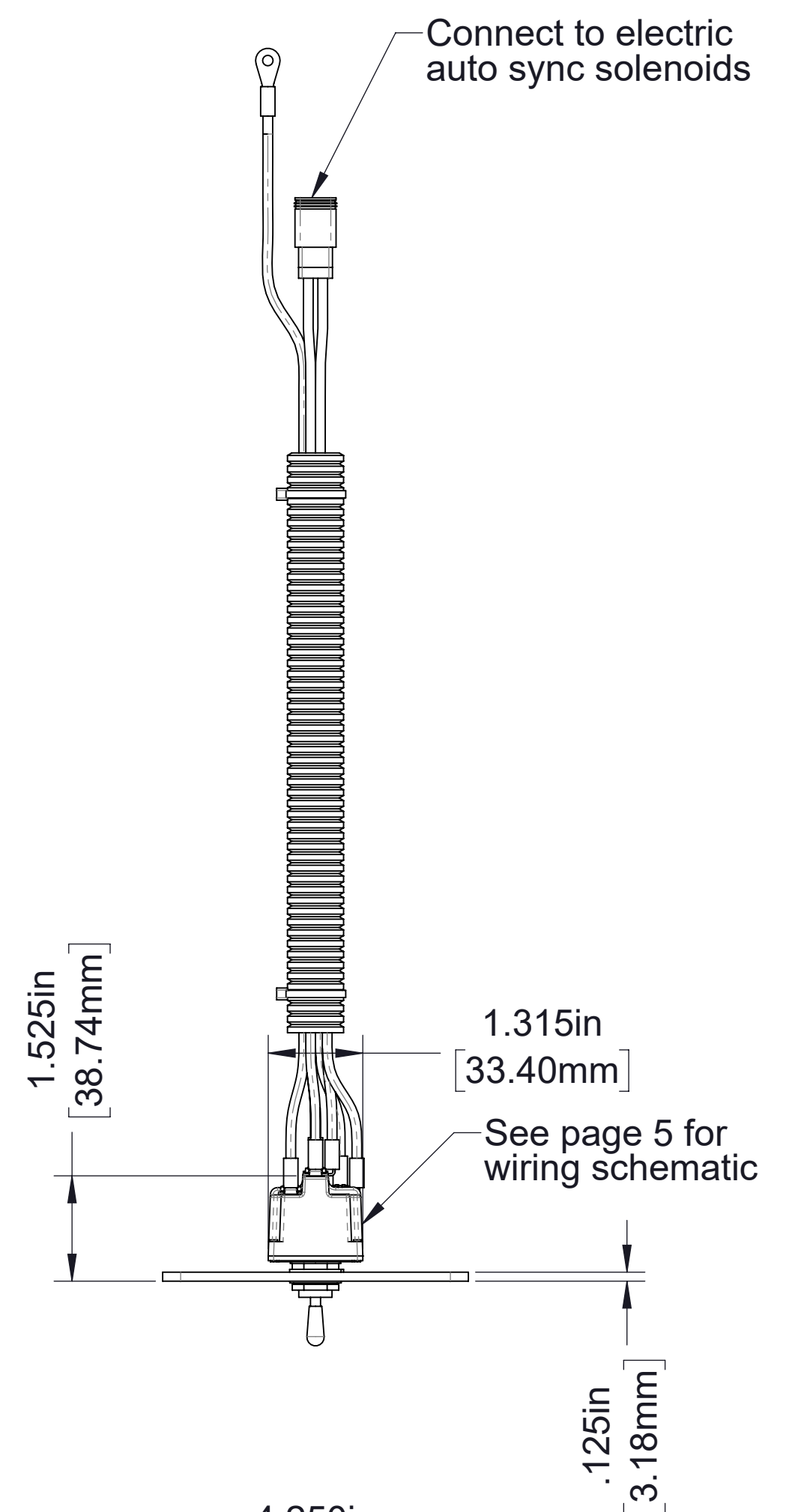
Oil Cooler, Heat Exchanger, Oil Filter and Fittings



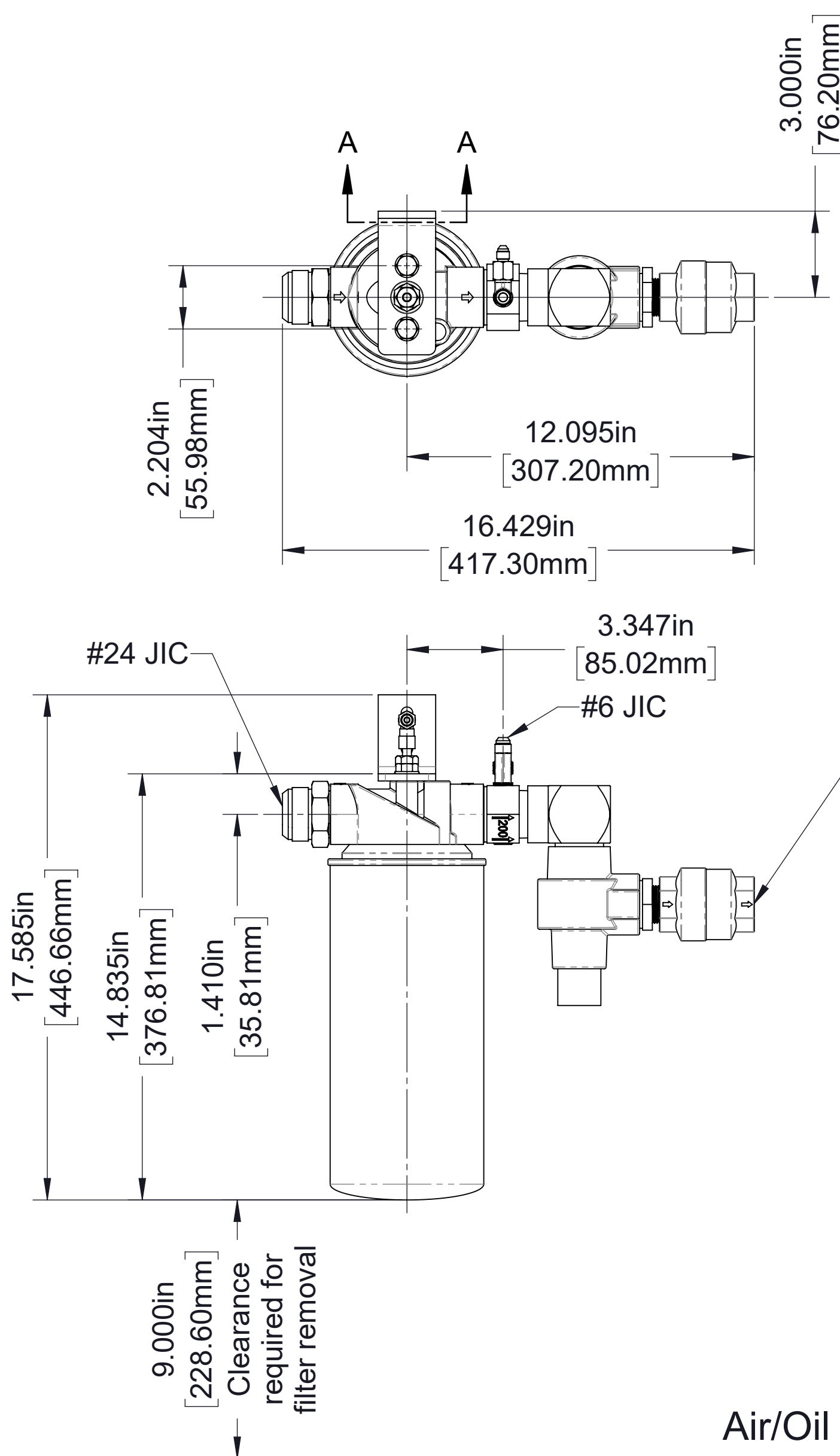
Wye Strainer with Flush Valve



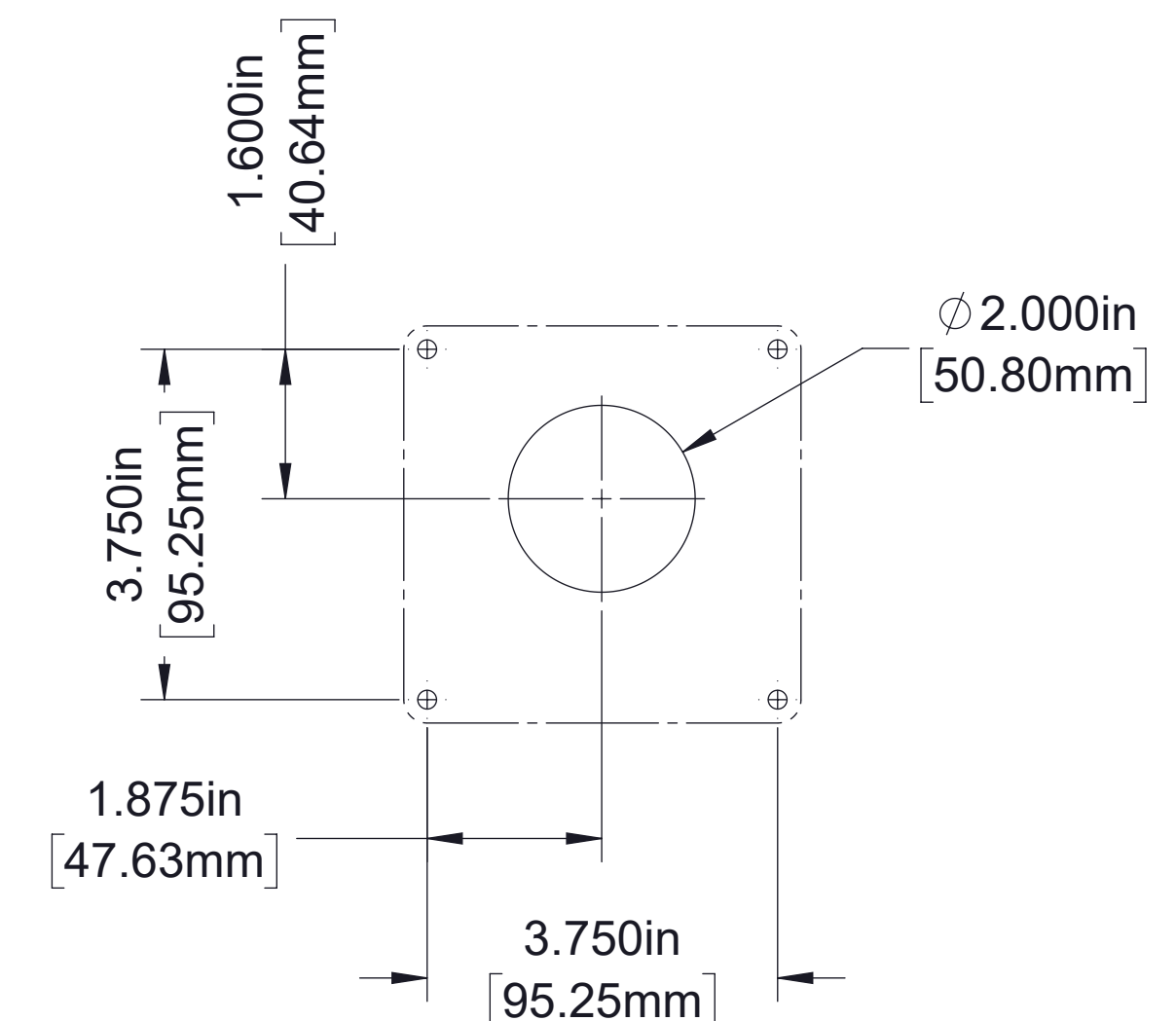
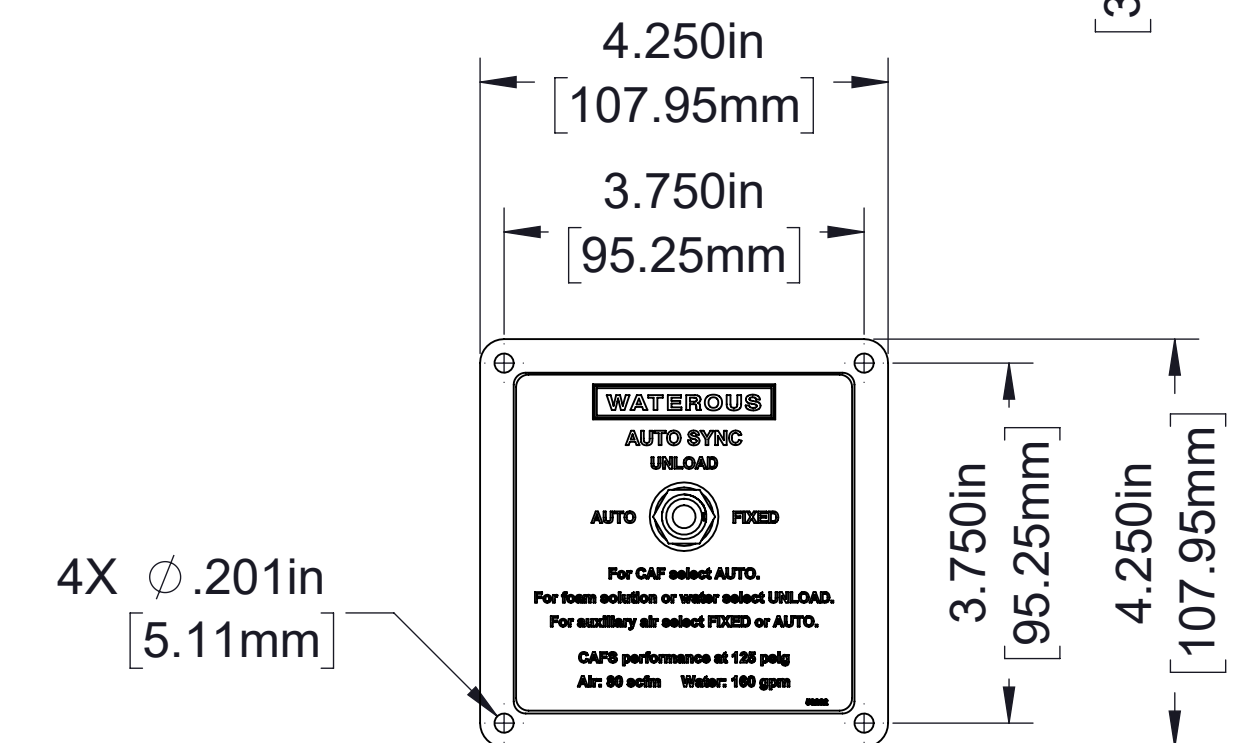
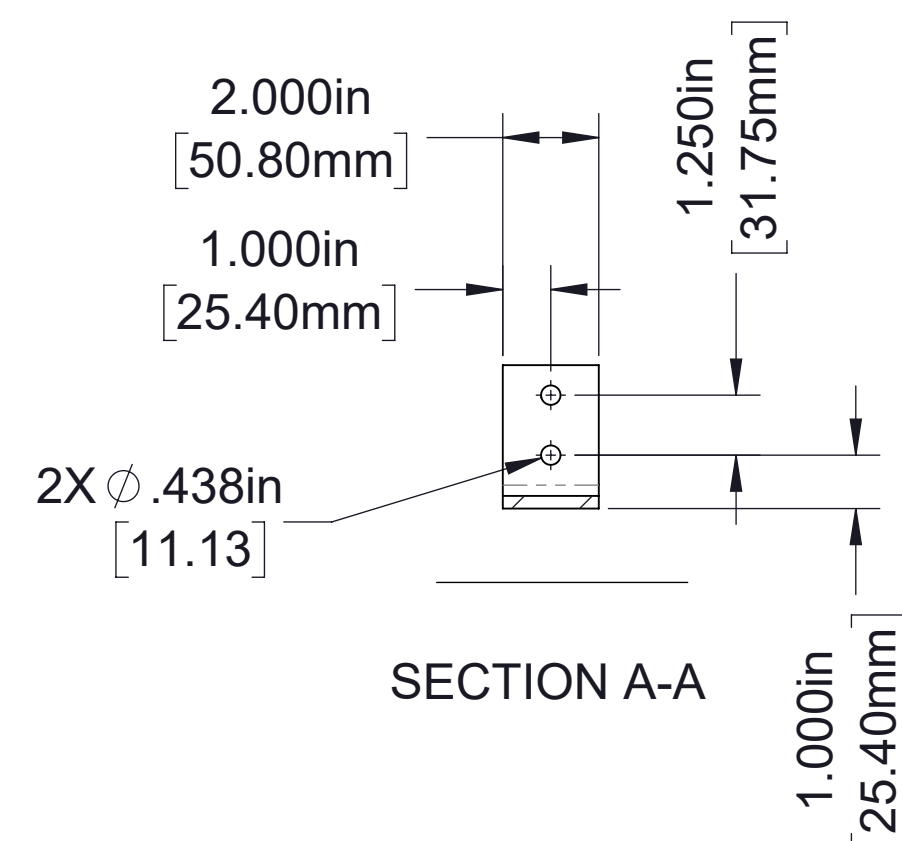
Oil Temperature Sensor



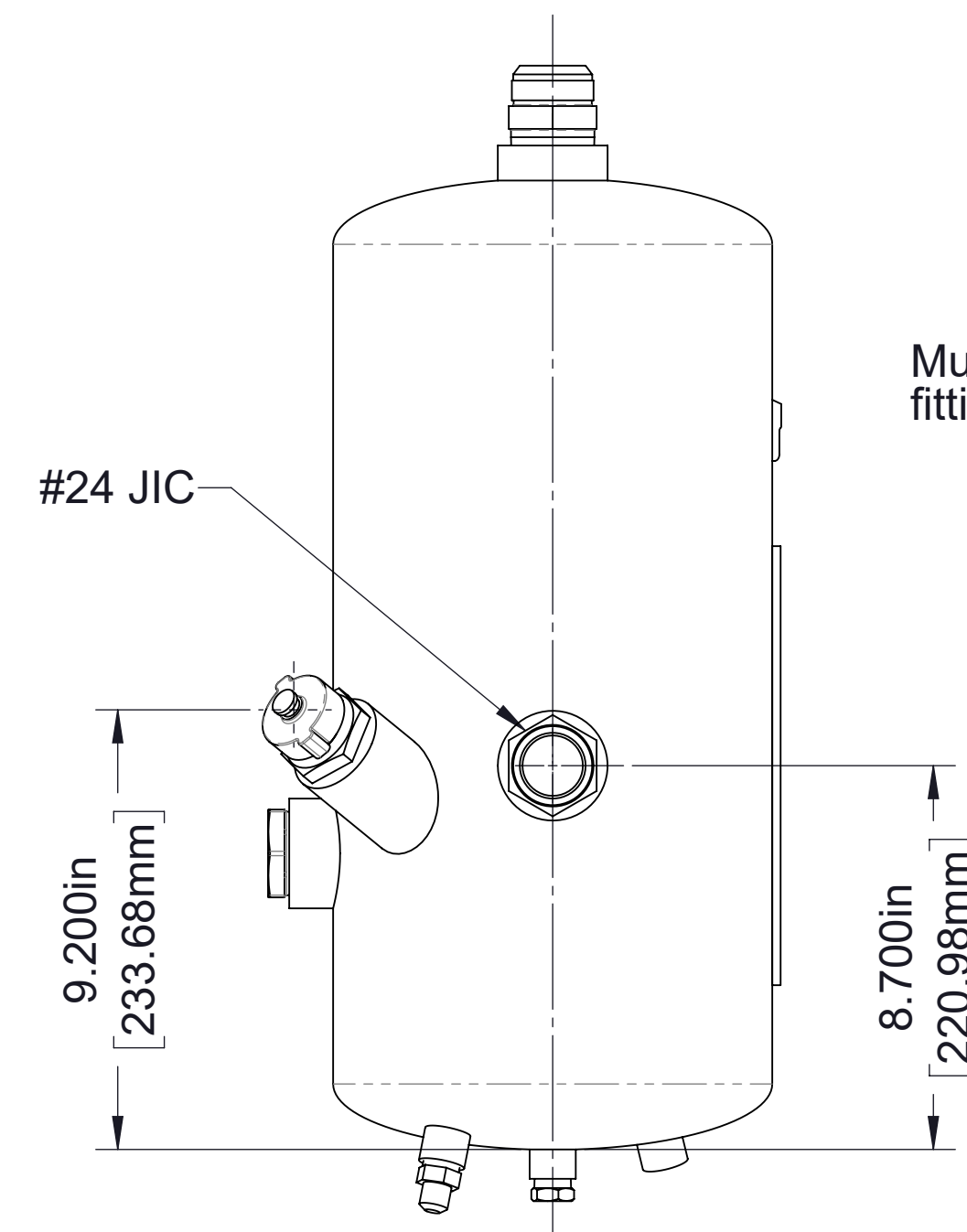
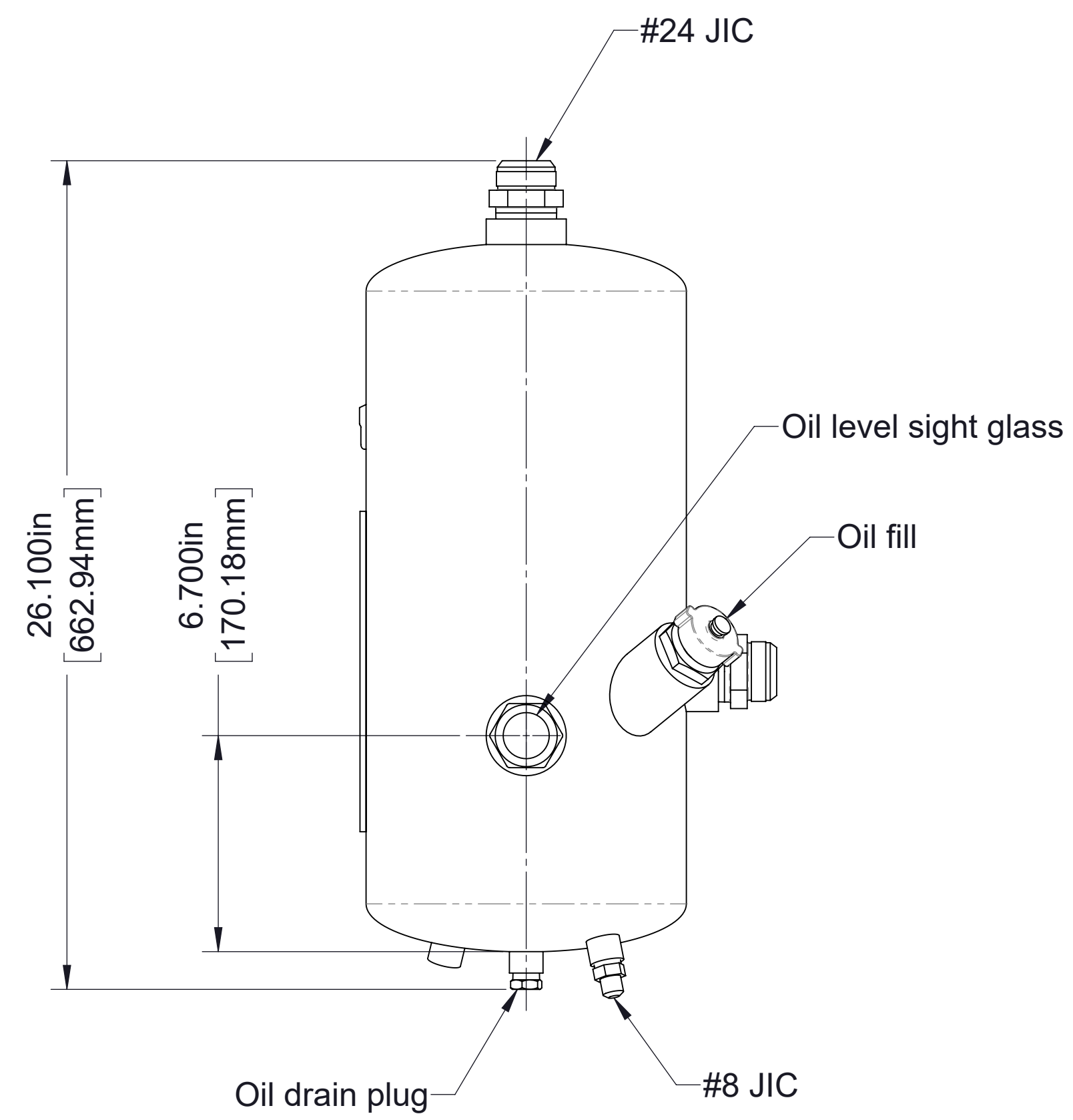
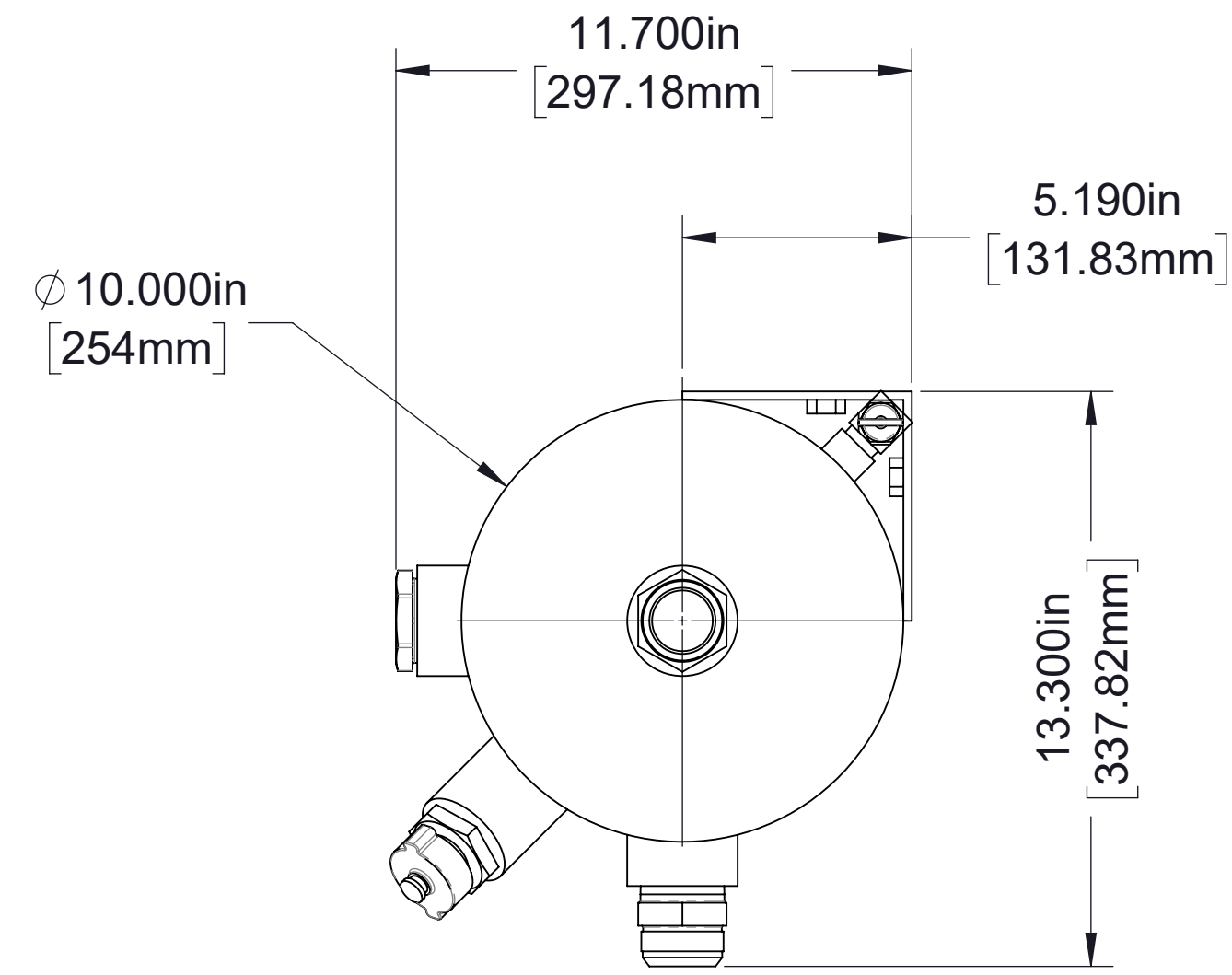
Auto Sync Panel



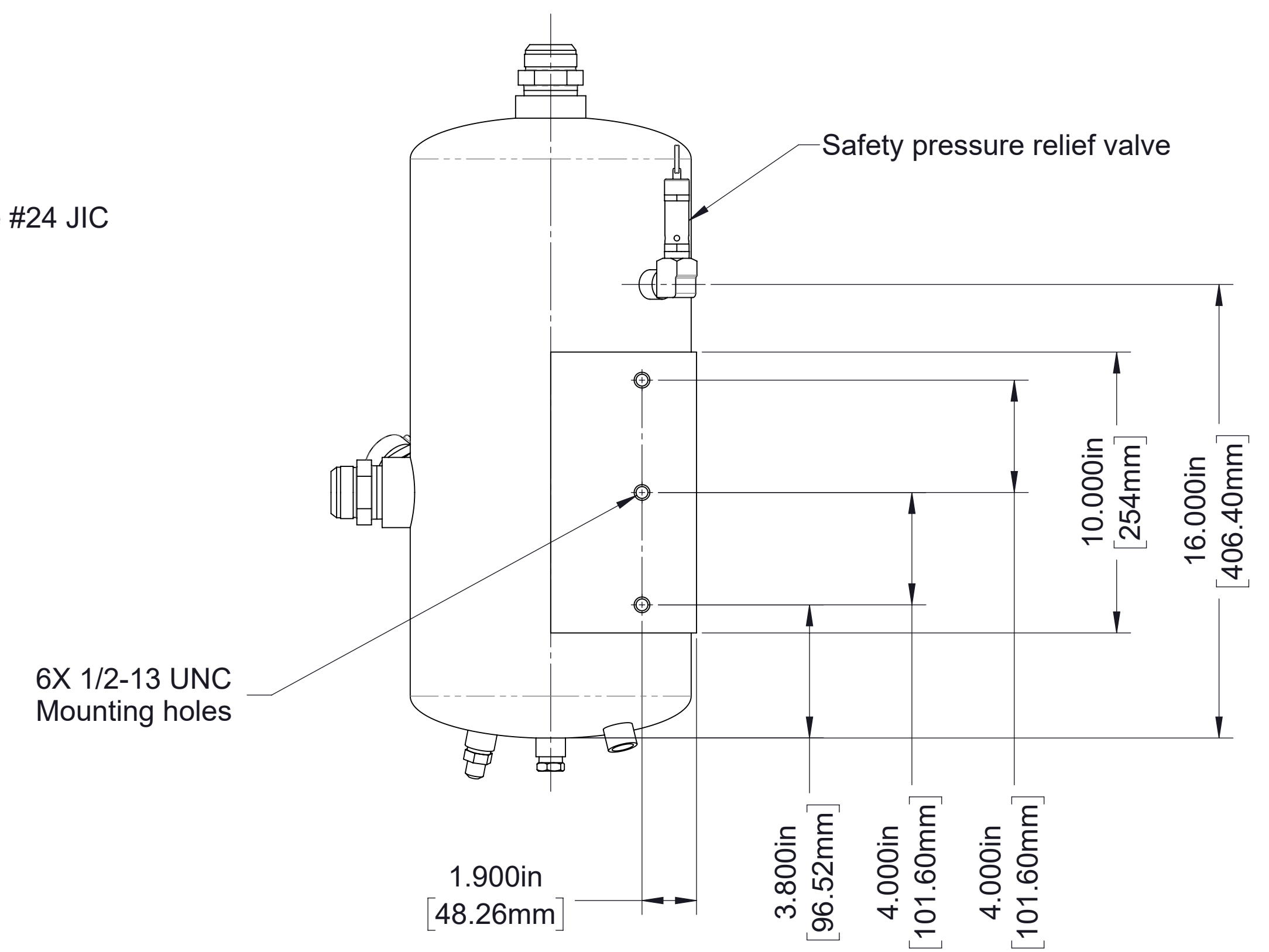
Air/Oil Separator with Min. Pressure Valve



Panel Hole Layout



Must be mounted with the #24 JIC fitting facing up



Oil Sump

Notes:

1. See page 6 for plumbing of all oil, water and air lines.
2. Oil level in oil reservoir should be at lower elevation than compressor. If oil reservoir must be placed higher than compressor, contact Pneumax for additional parts that must be installed.

Compressor Components (Shipped Loose)