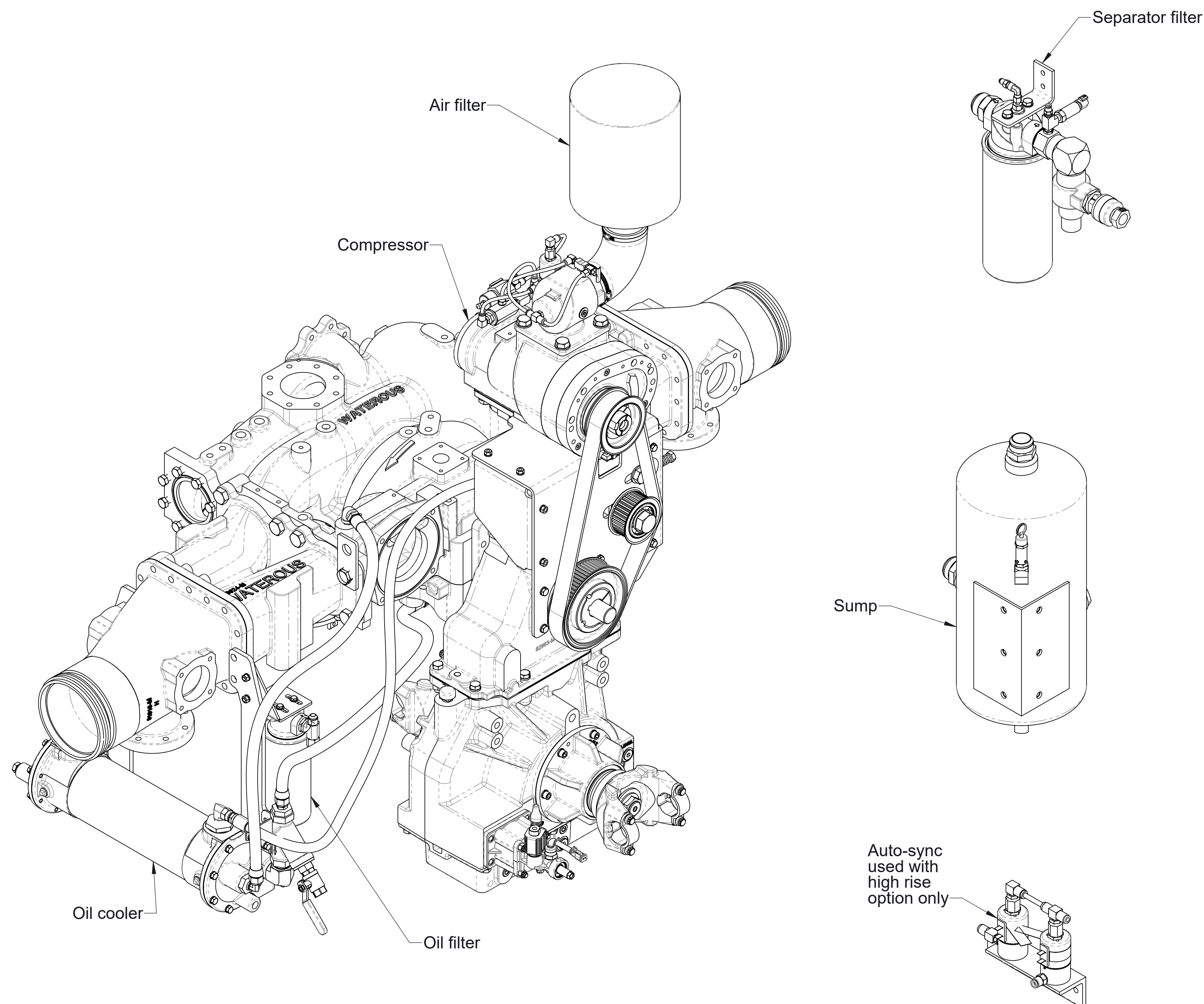


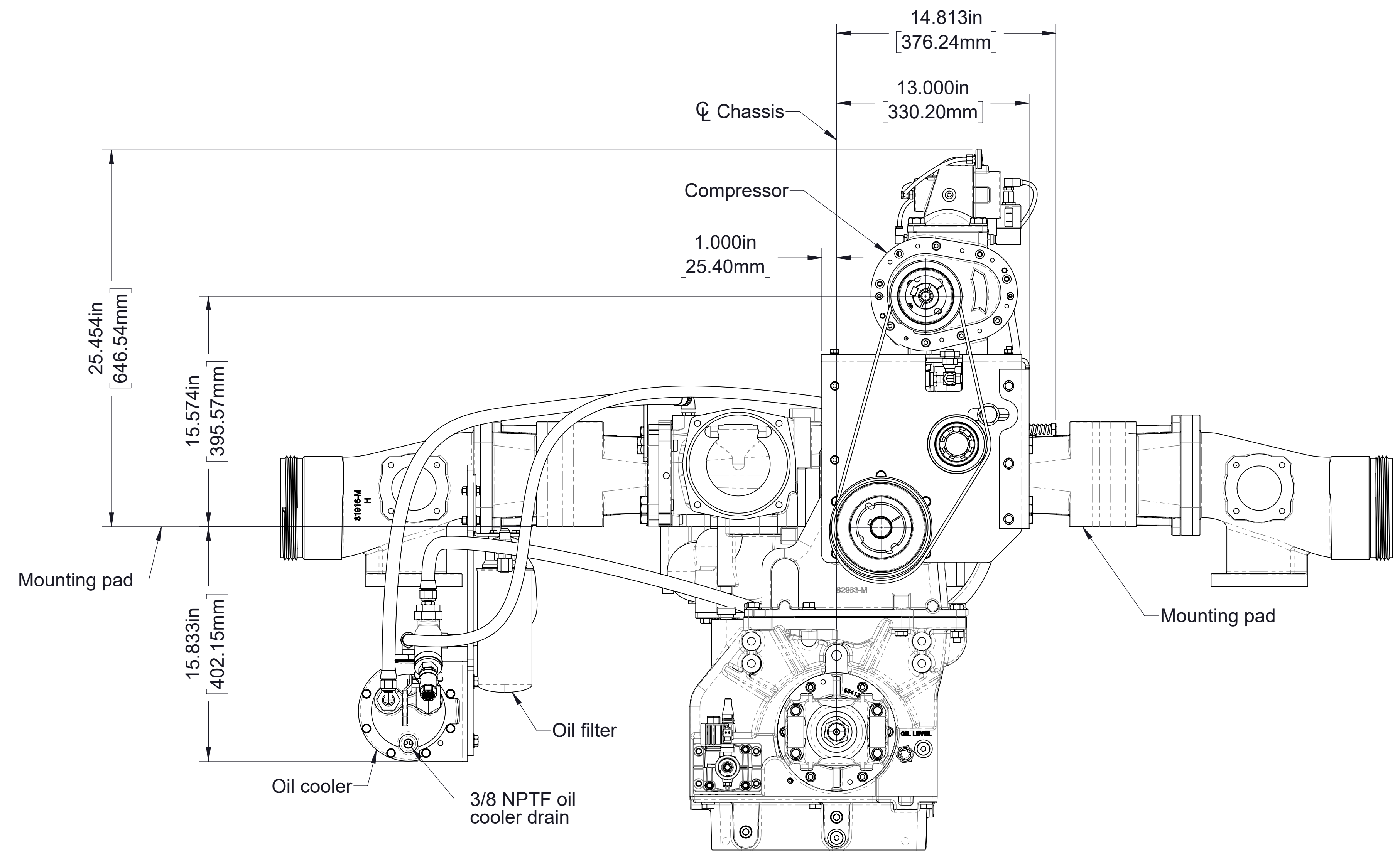
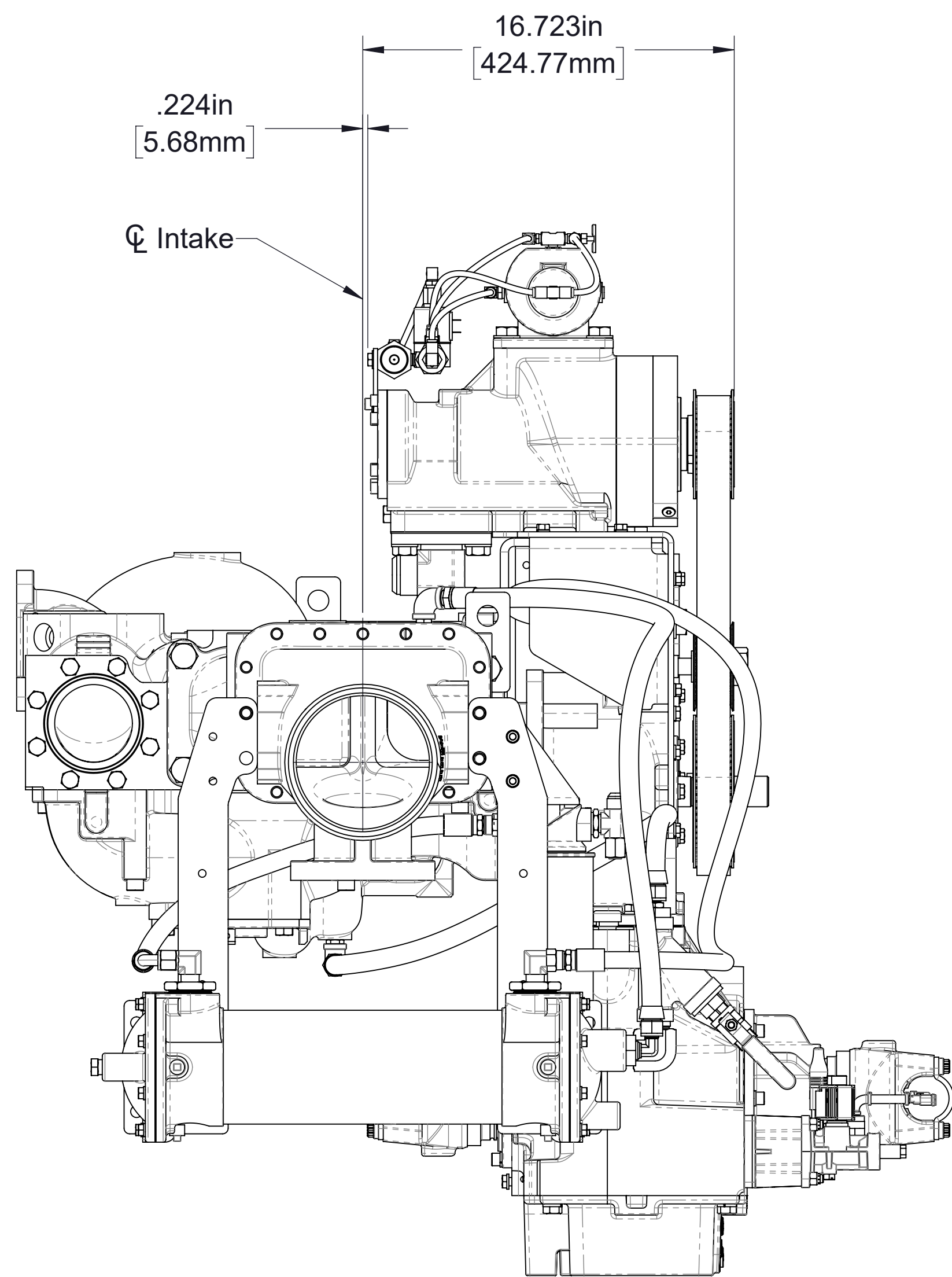
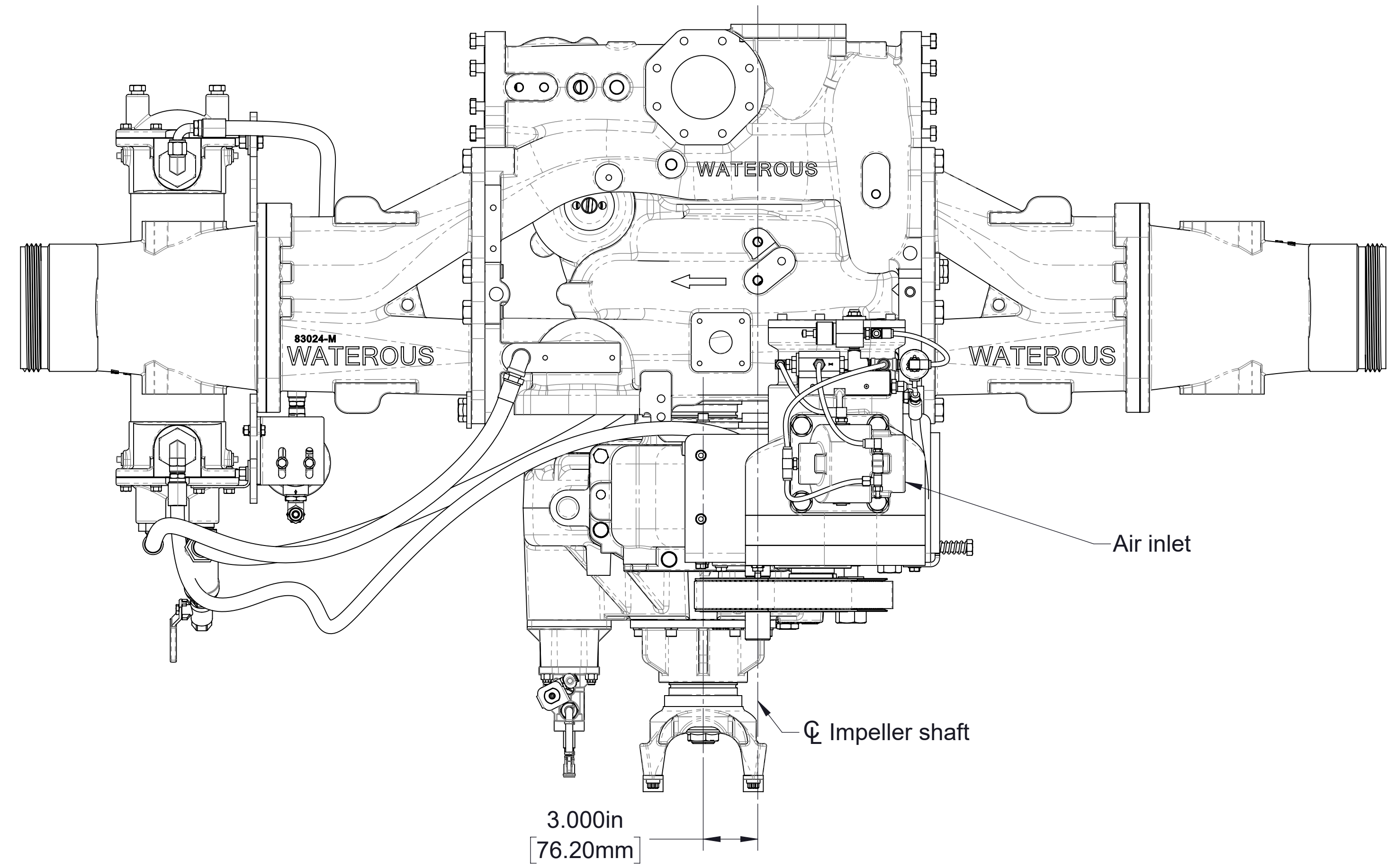
Model 150-ECL Eclipse GEN 2.0 CAF System As used with CM and CS Series Fire Pumps



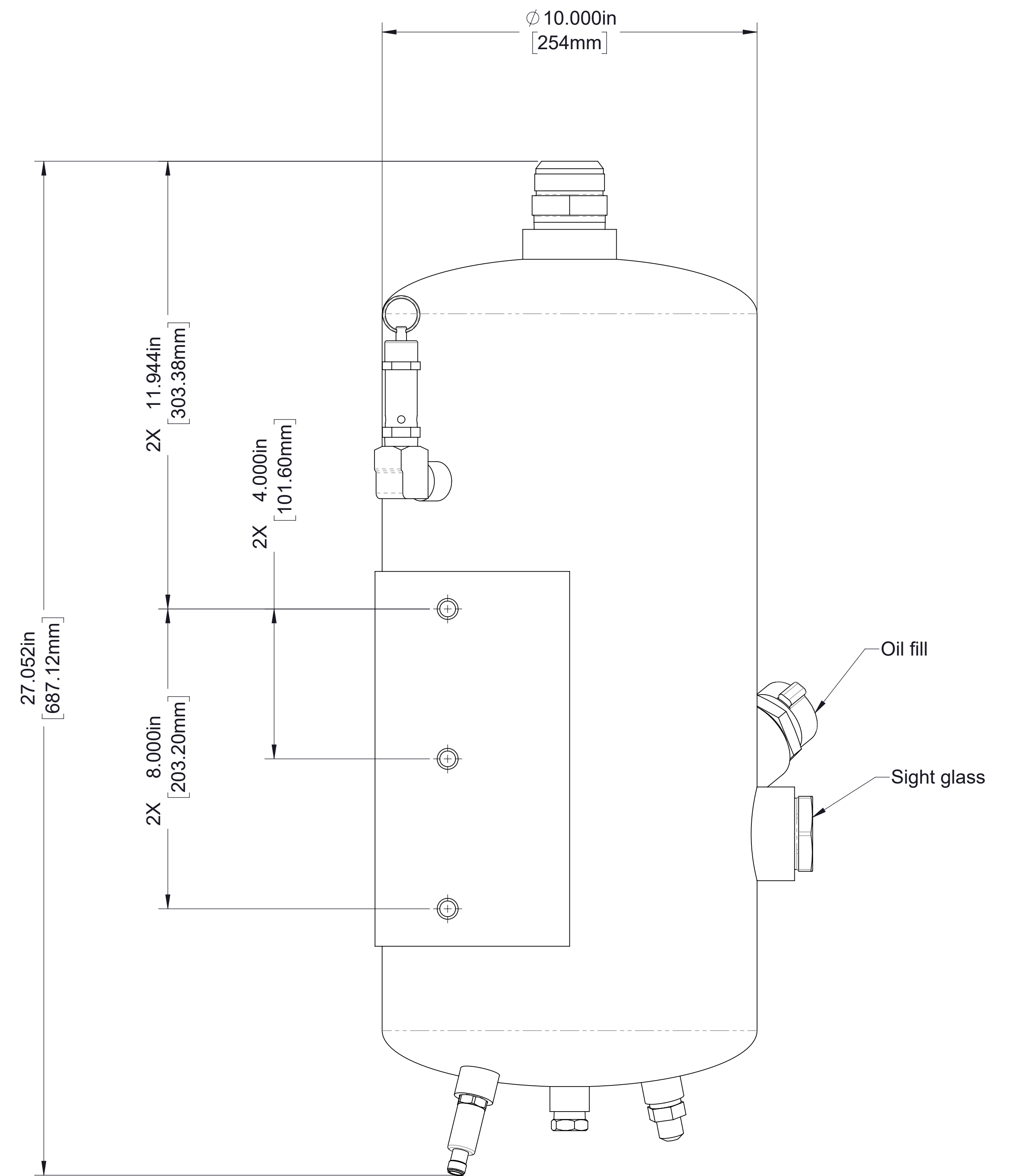
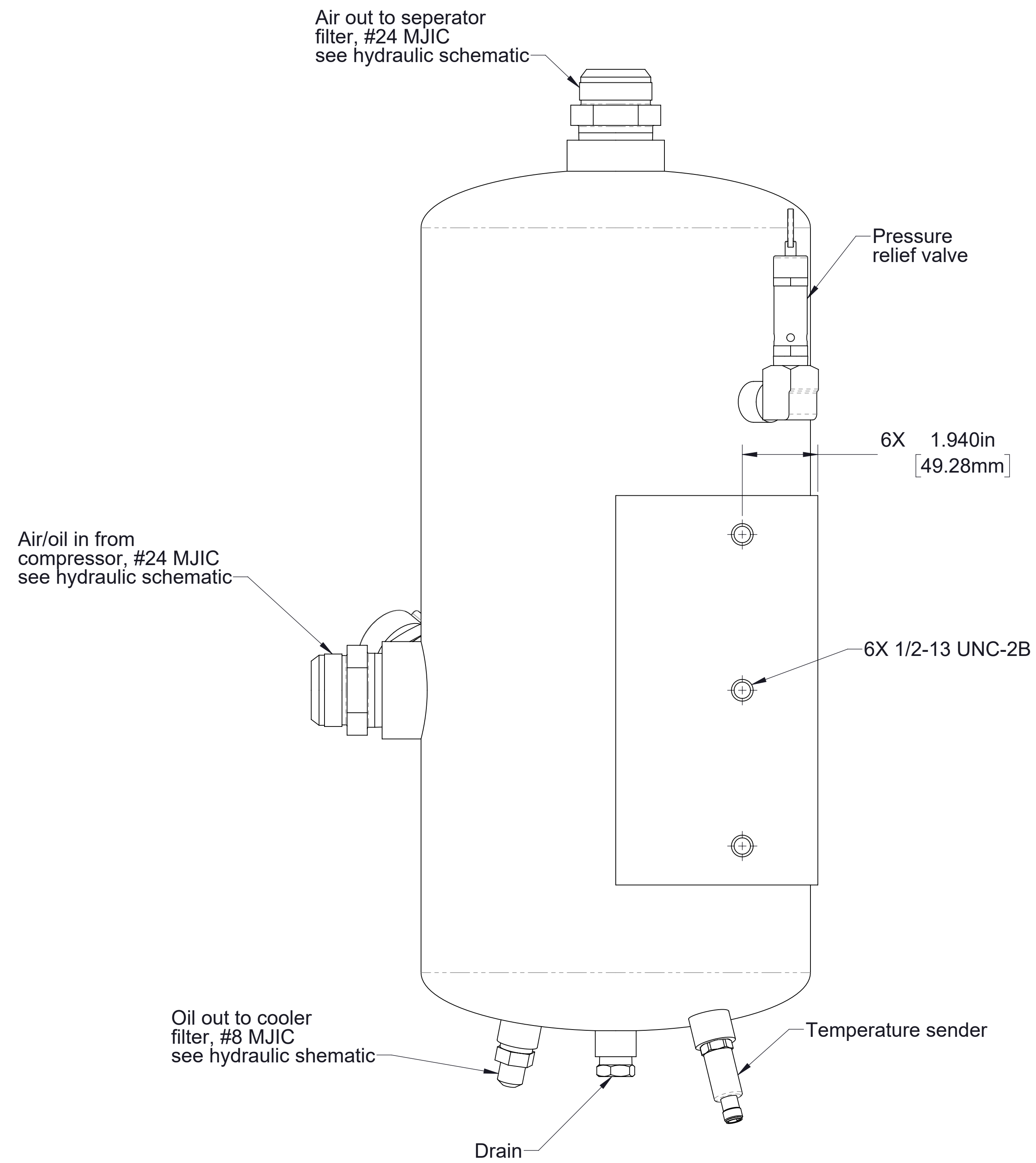
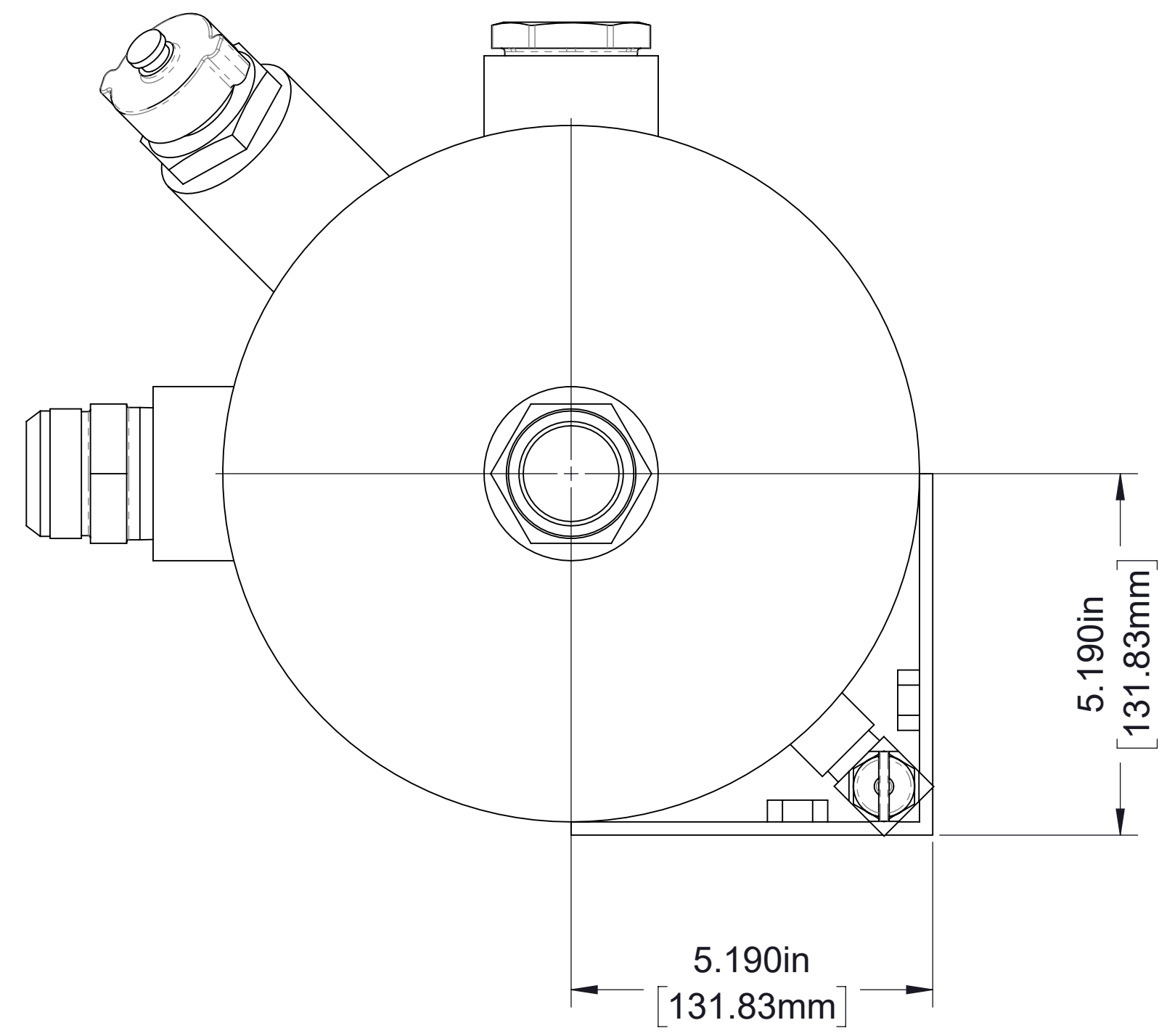
Standard Components:	Page
Mounted on Pump:	
• Compressor, Oil Cooler, Oil Filter	2
Shipped Loose:	
• Sump (Oil Reservoir)	3
• Air Filter	4
• Separator Filter	5
• Auto-Sync (Used with High Rise Option Only)	6
• Panel Plates	6
Foam Pumps:	
• Models Aquis 3.0 or Aquis 6.0:	See F-1031-2447
• Foam Generators (CAF Discharge)	See DPL83637
Optional Components:	
• Panel Mounted Oil Cooler Strainer	7
• Auxilliary Air Condition	8
• Oil Inject Check Valve	See DPL83810
• Hose and Fitting Kit	See DPL83810
Schematics:	
Hydraulic:	
• With In-Line Oil Cooler Strainer	9
• With panel Mounted Oil Cooler Strainer	10
Air Circuit:	
• Without High Rise Option	11
• With High Rise Option	12
• Electrical (See Foam Generators)	See DPL83637

- Notes:
 1. See drawing DPL83913 for CM series fire pump dimensions.
 2. See drawing DPL83915 for CS series fire pump dimensions.

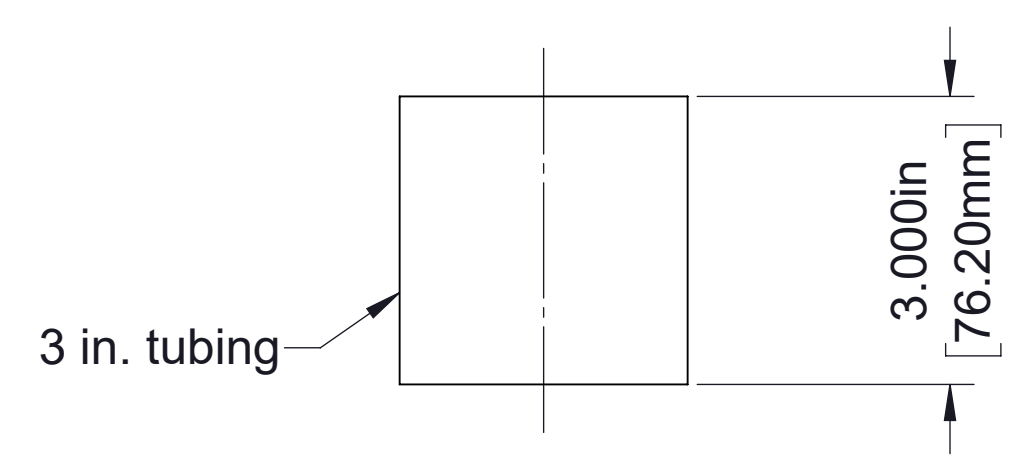
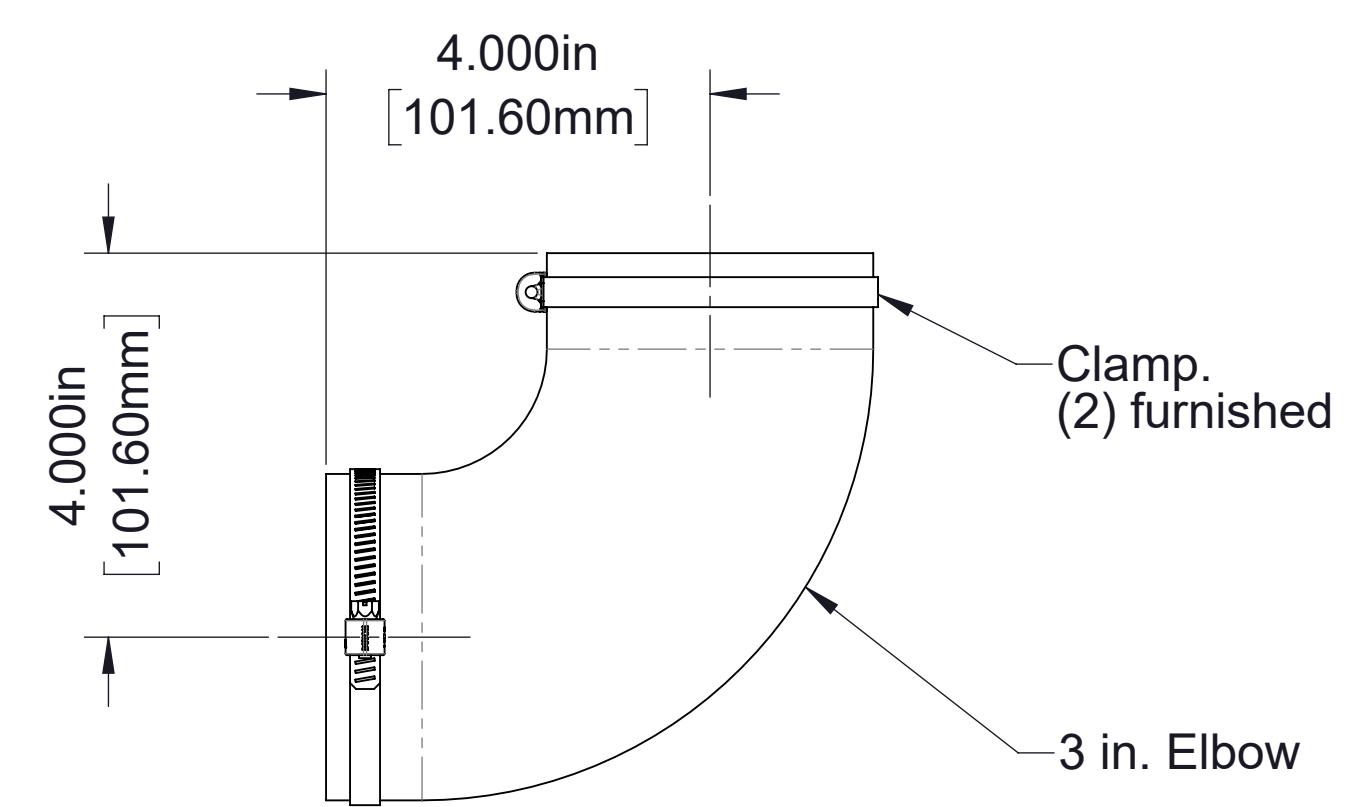
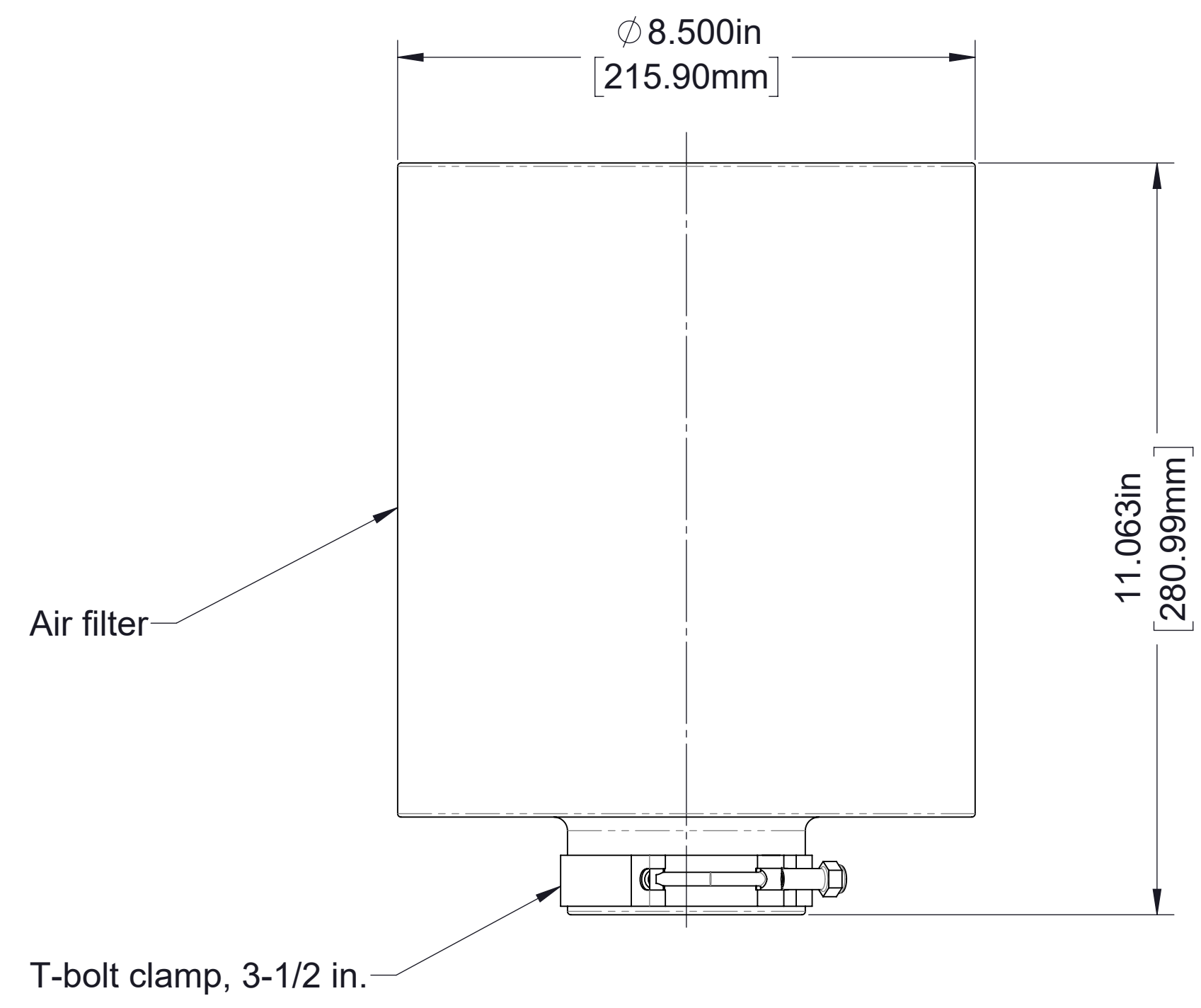
Front
 ↑
 ↓
 Rear



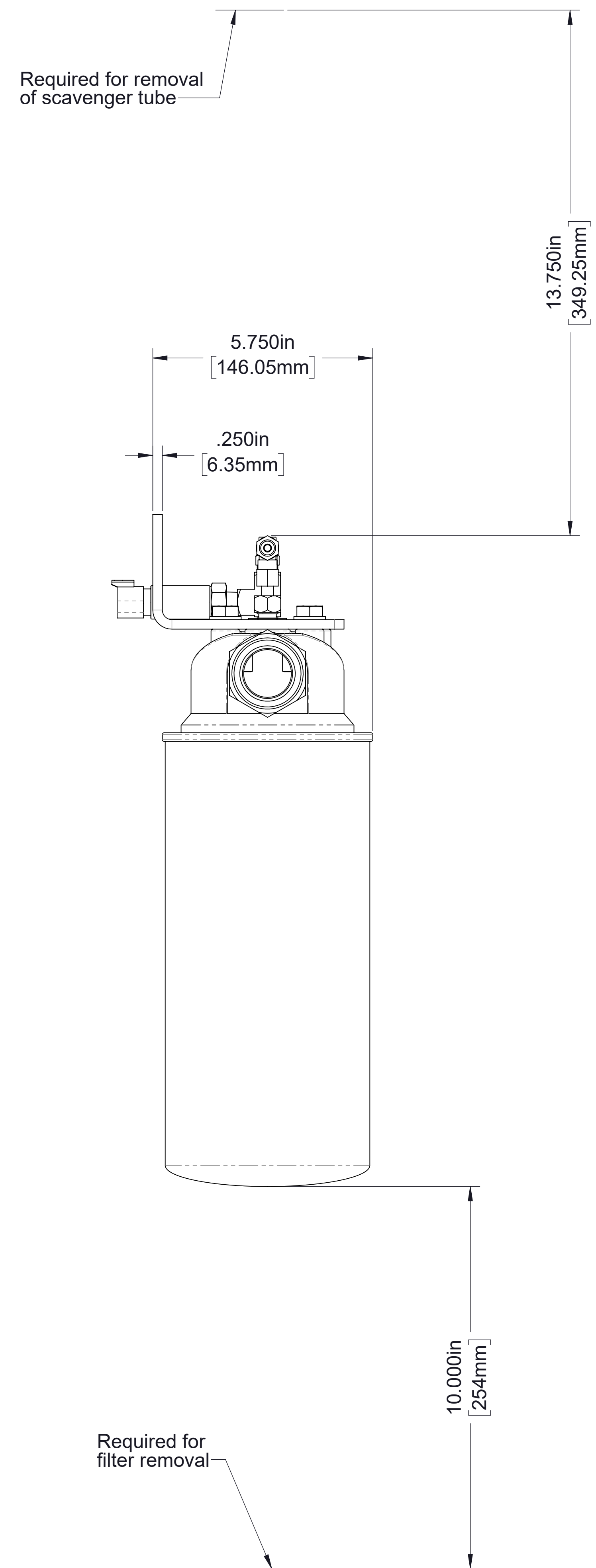
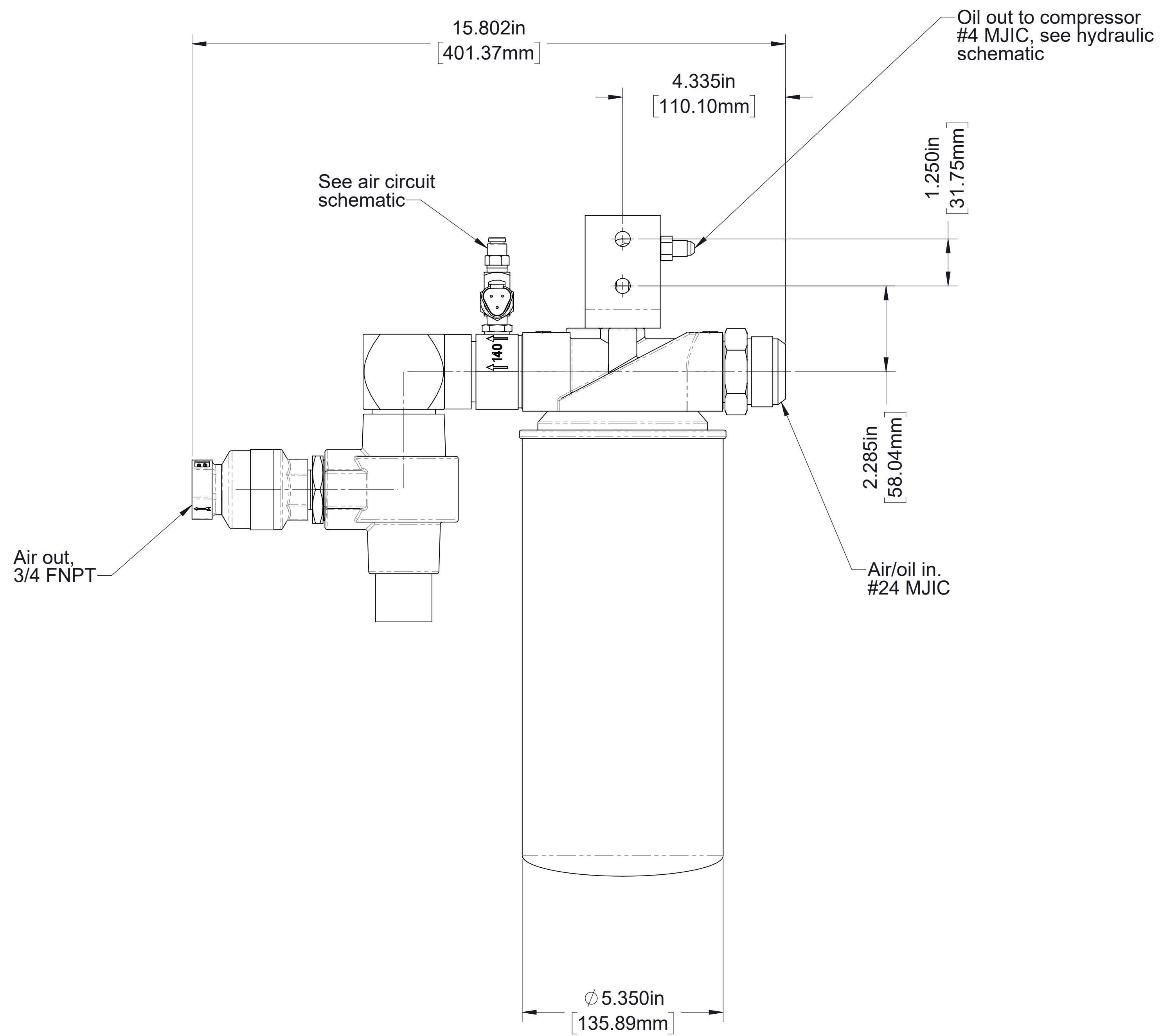
Pump and Compressor



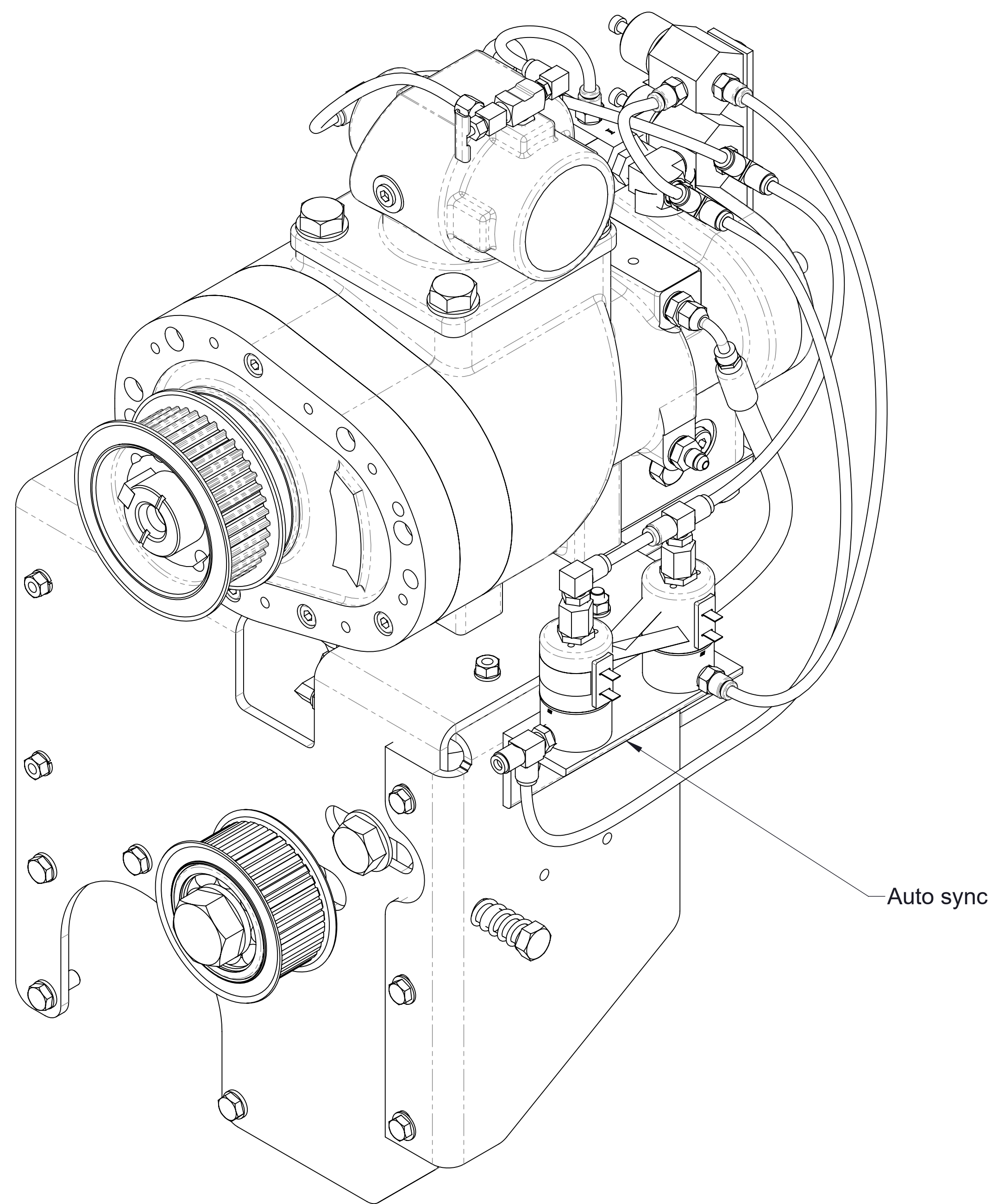
Sump (Oil Reservoir)



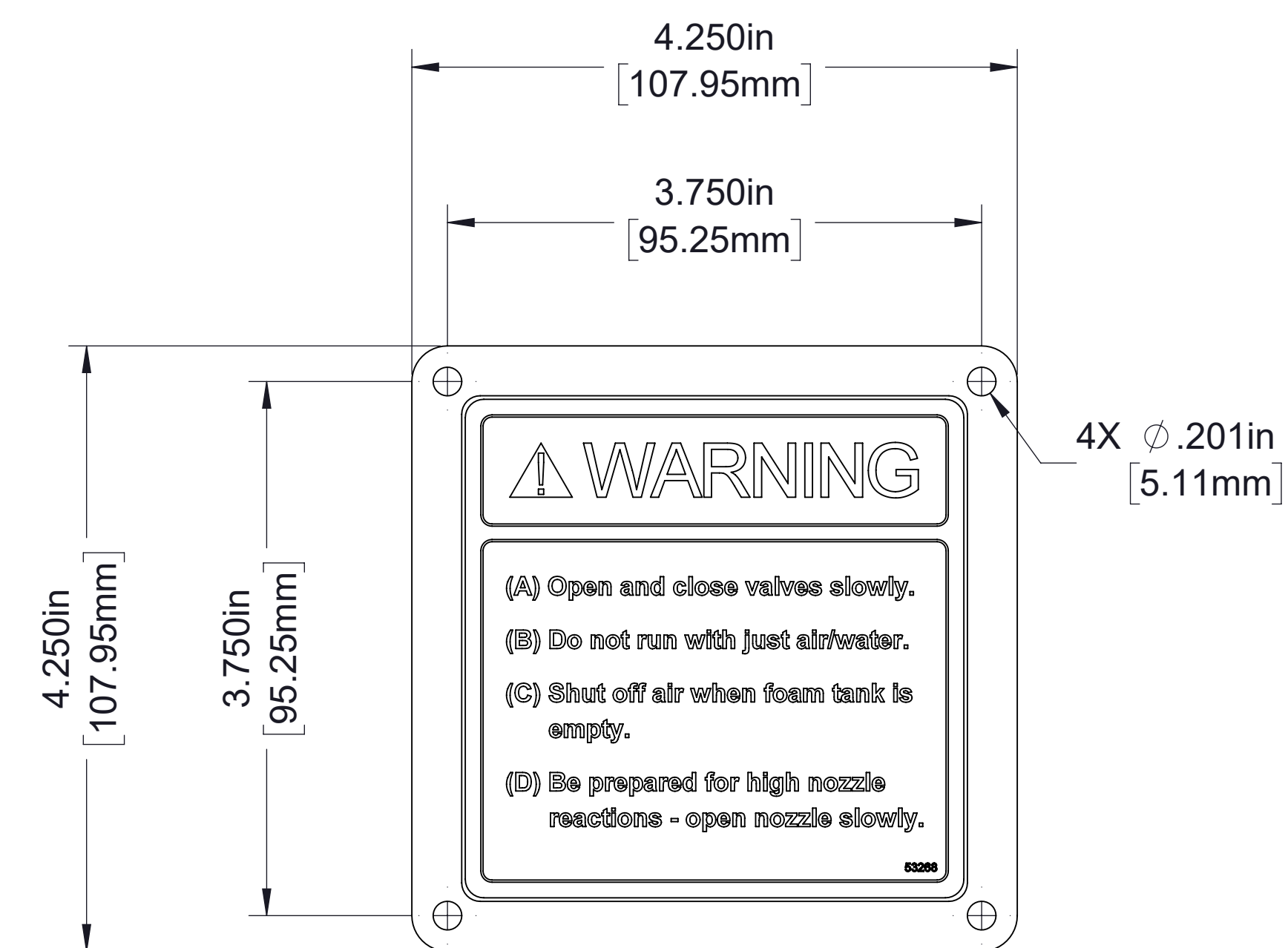
Air Filter



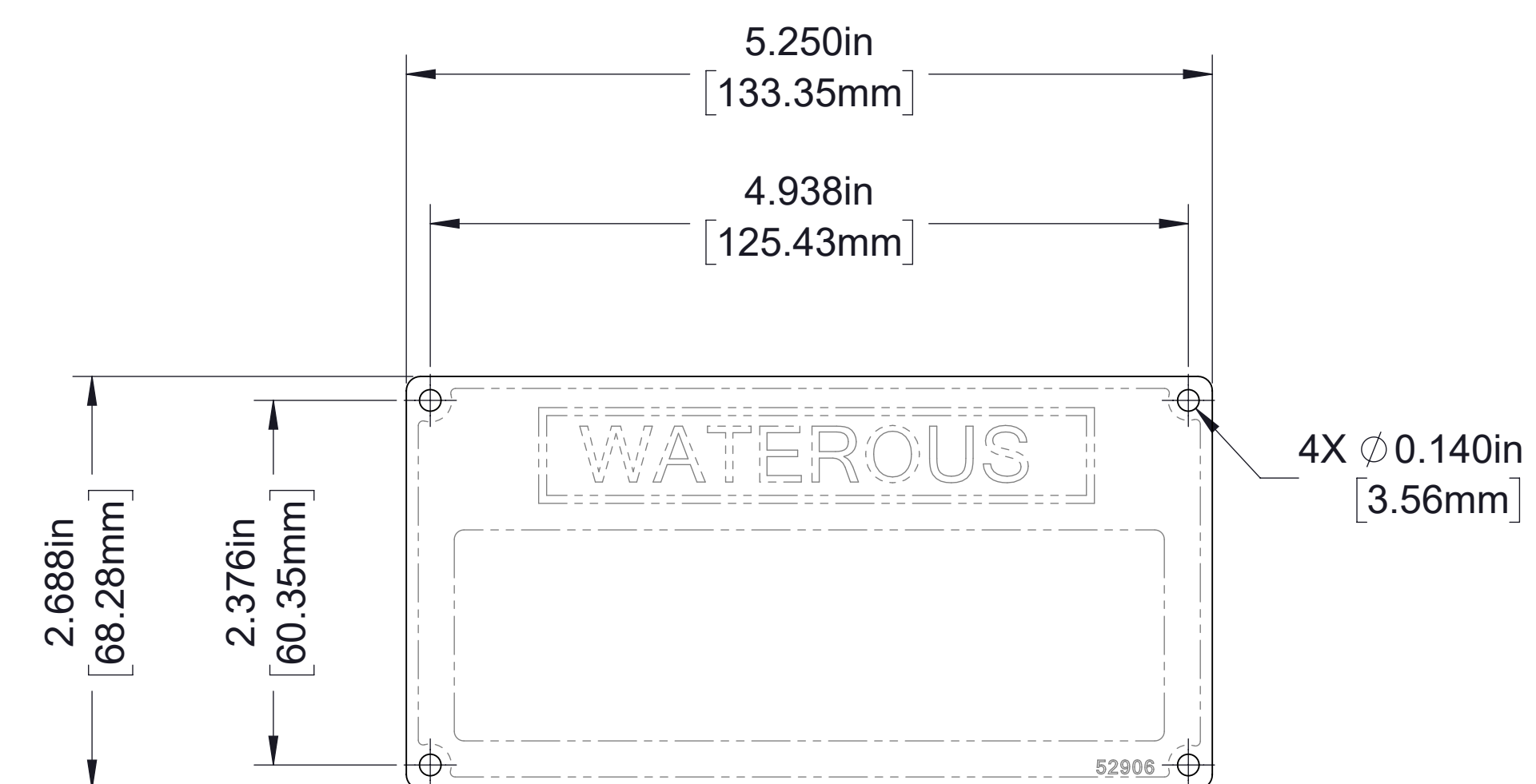
Separator Filter



Auto Sync
 Used with high rise option only
 mounted on compressor at factory
 for air connections see air circuit schematic with high rise option

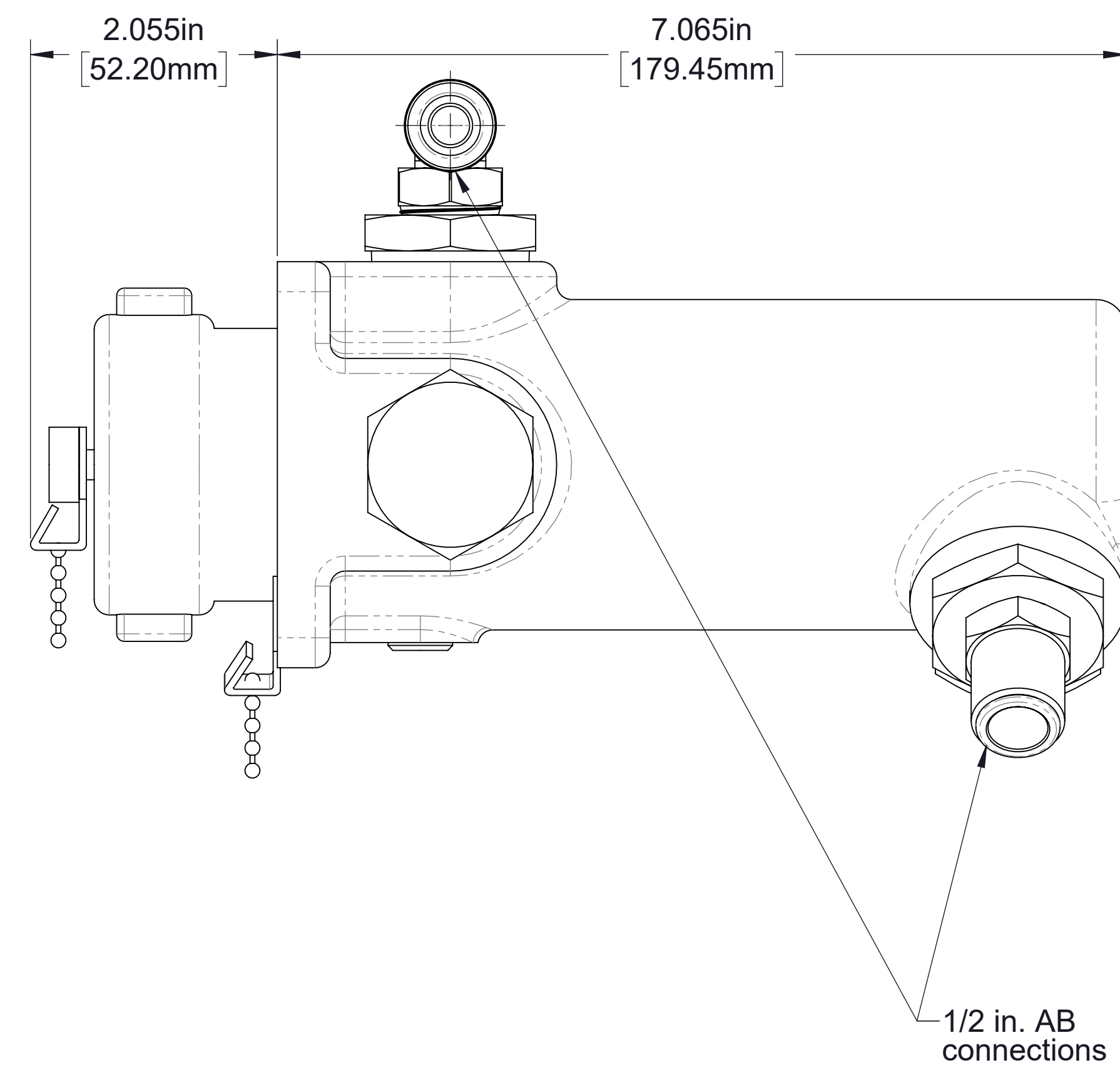
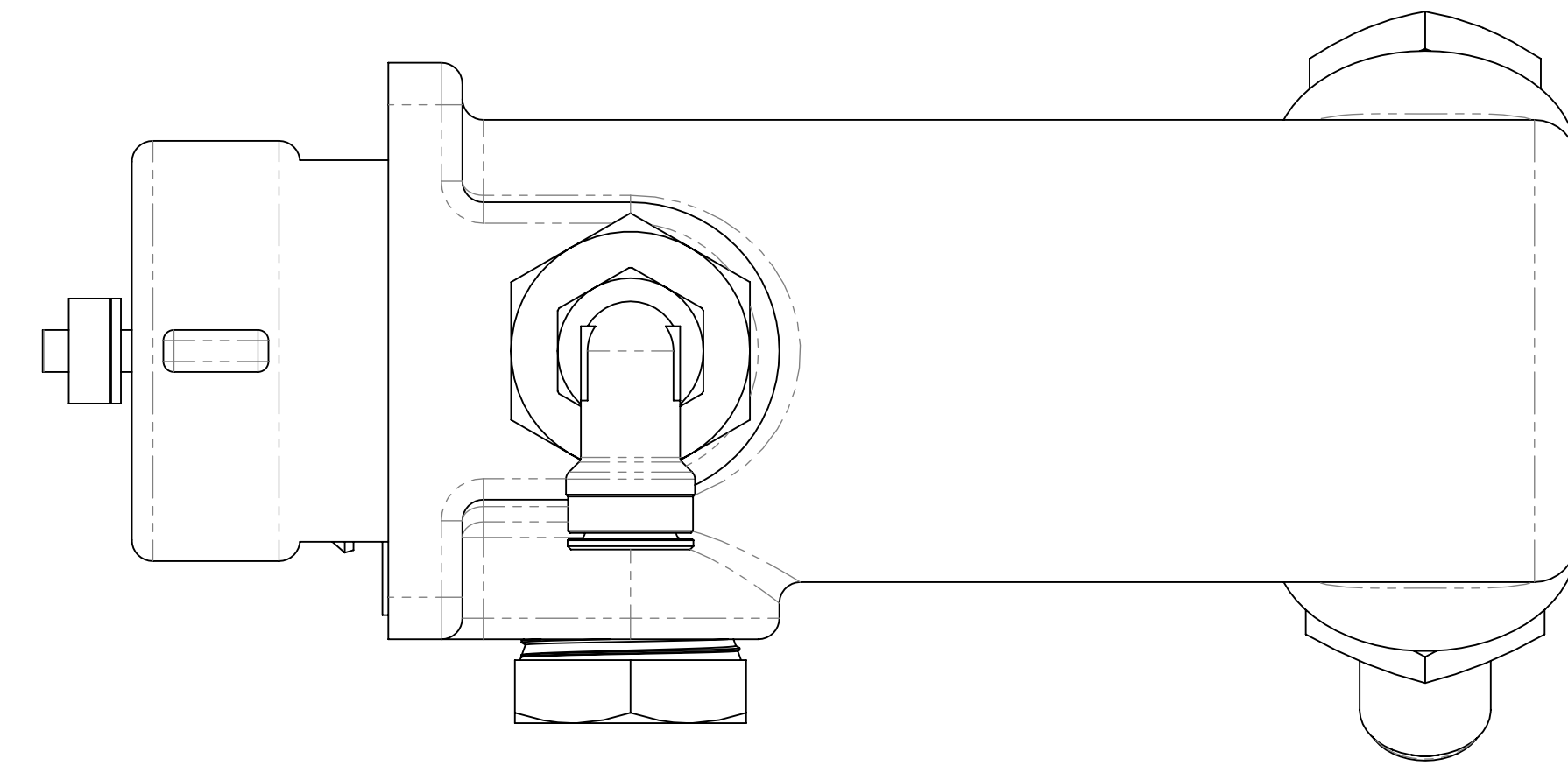
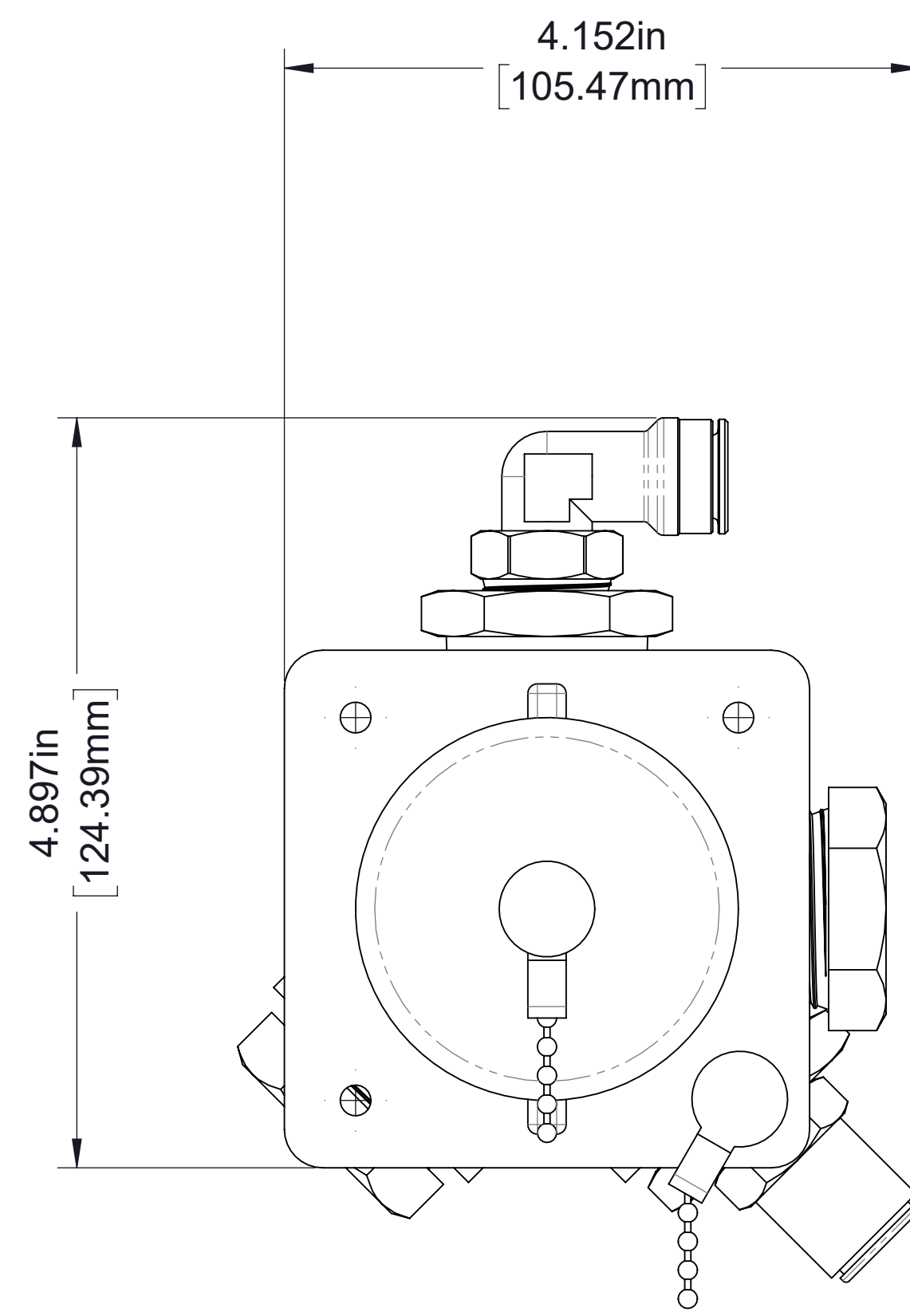
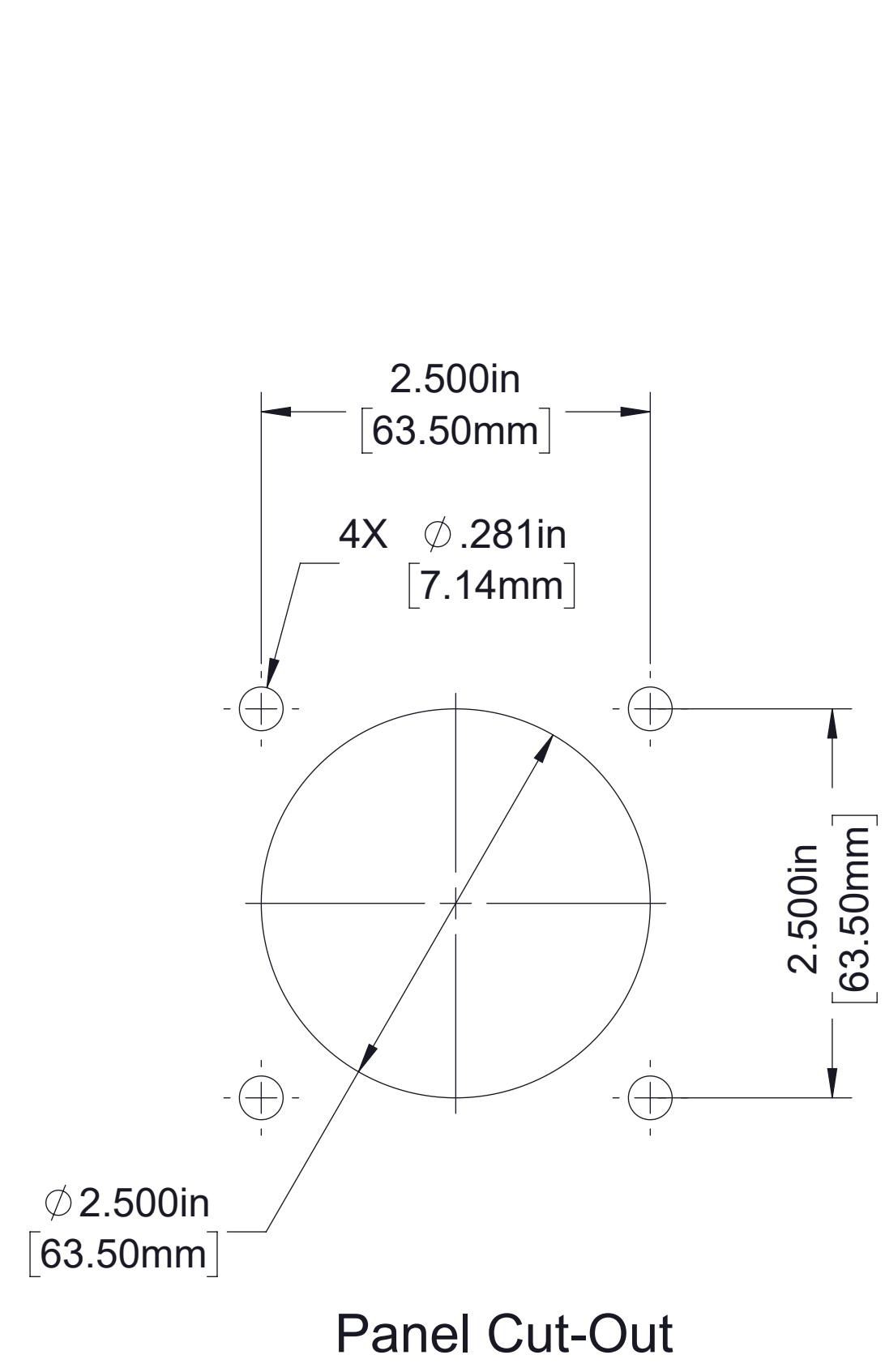


Cafs Warning

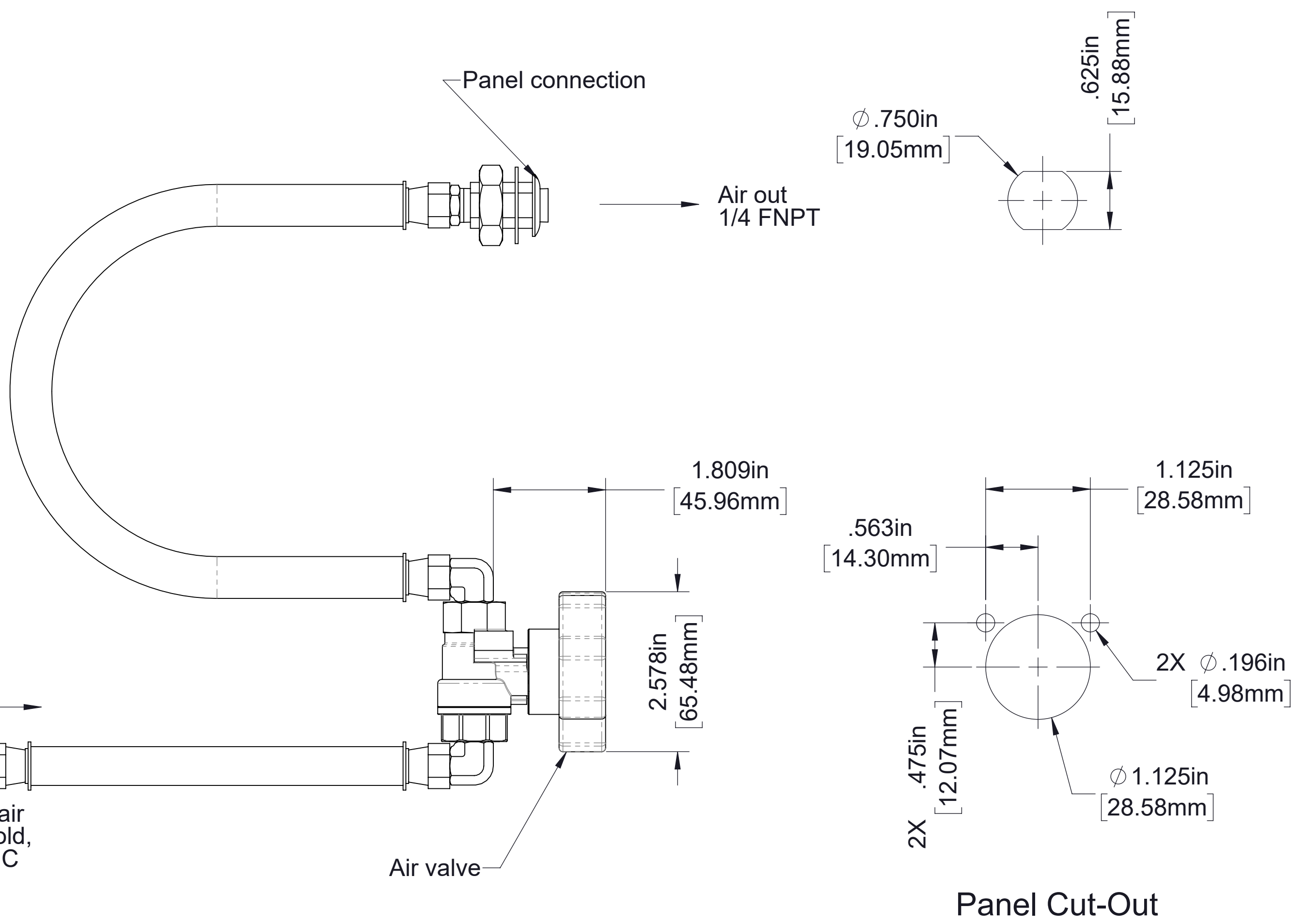
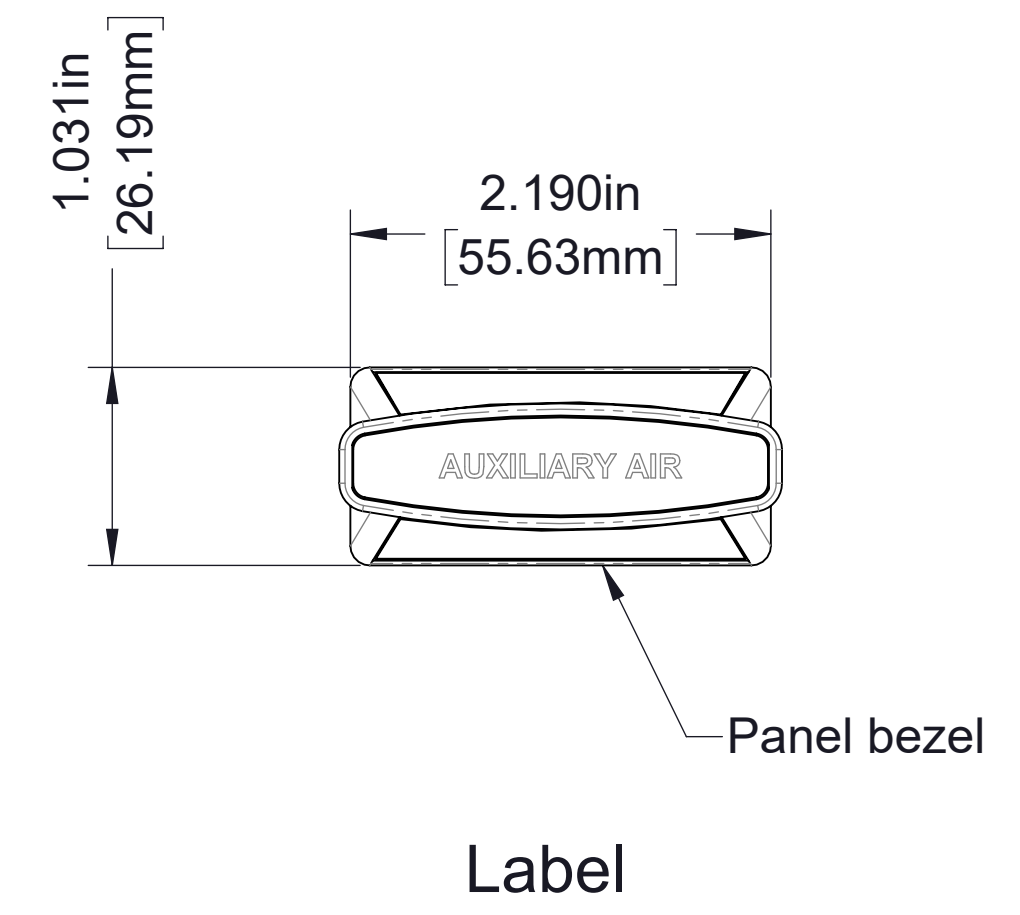
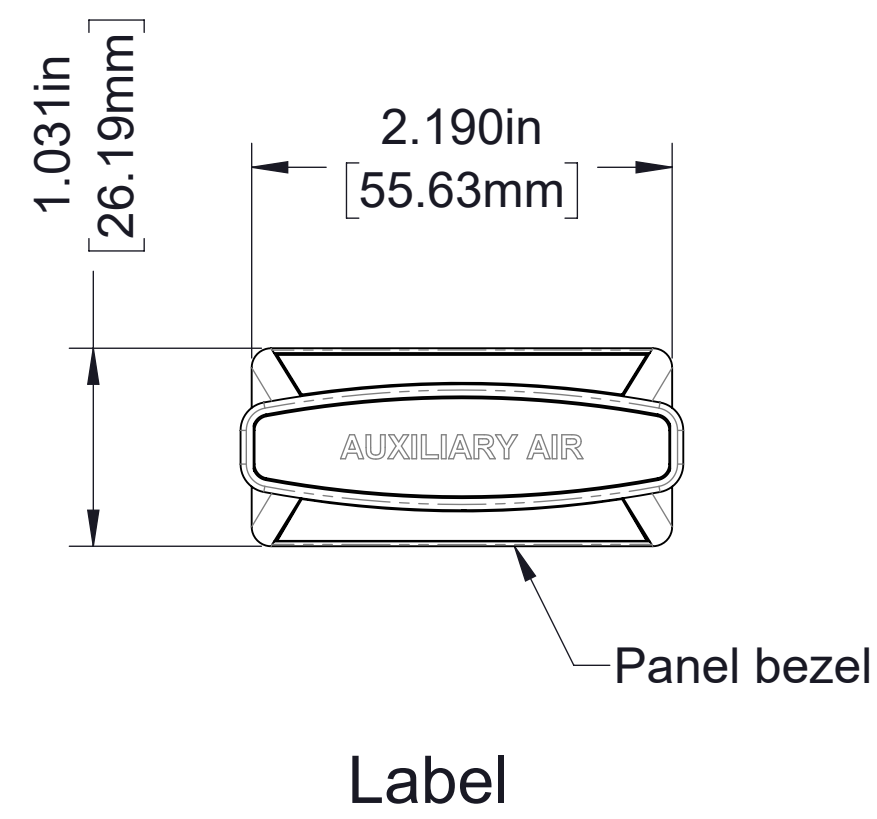


Serial Plate

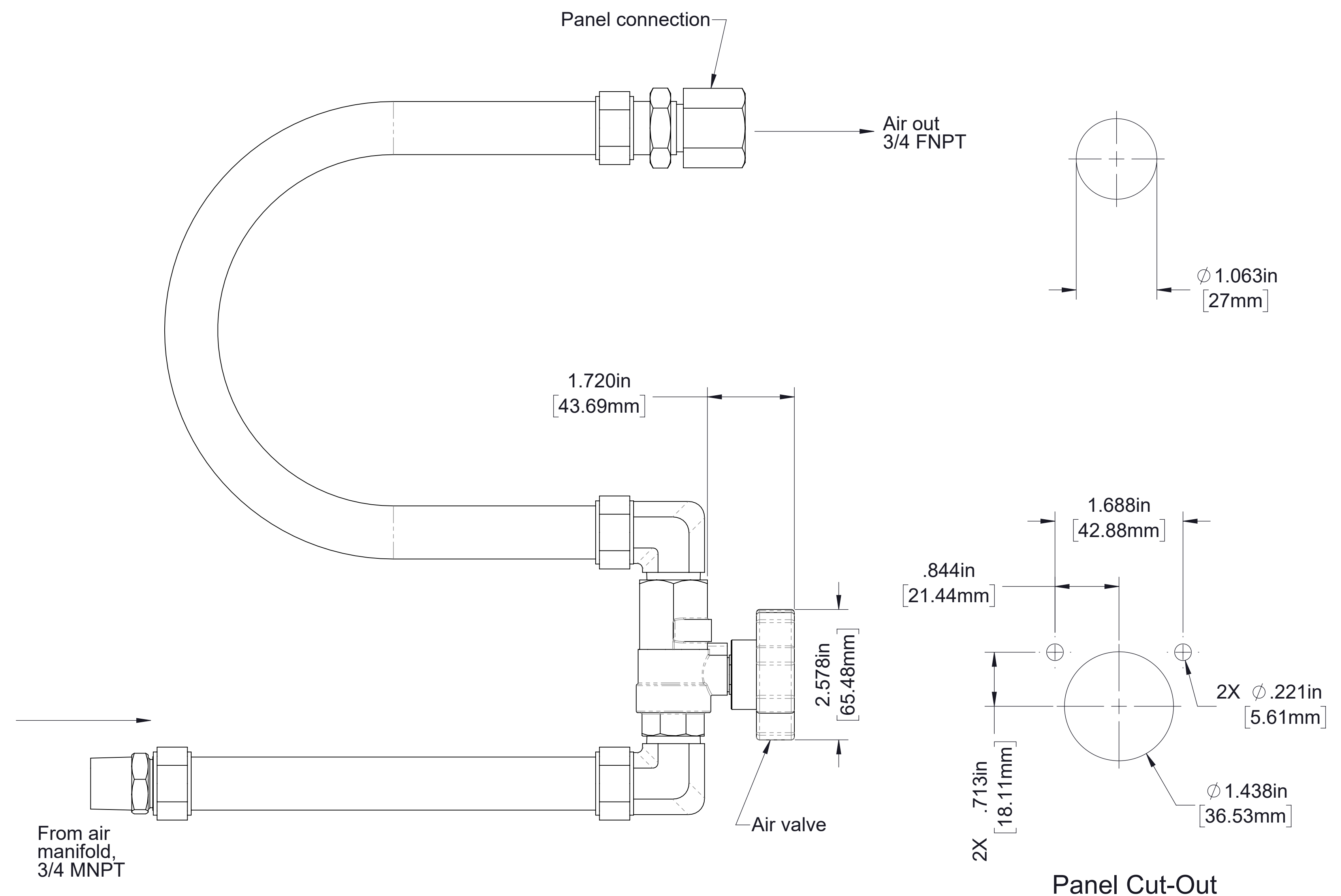
Panel Plates



Panel Mounted Strainer

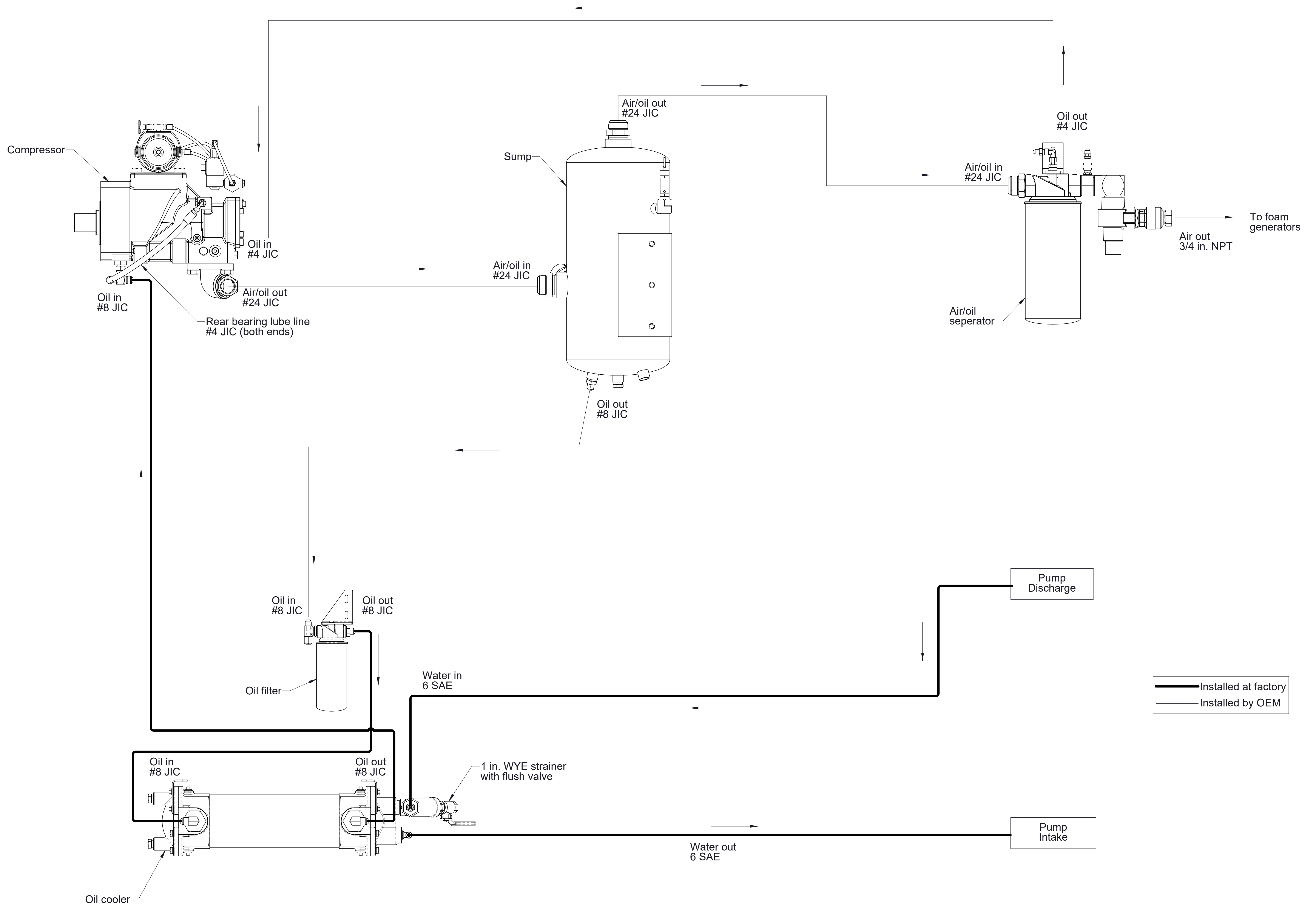


1/4 FNPT Connection
(Hoses and fittings furnished)
Order part no. 83360-3A

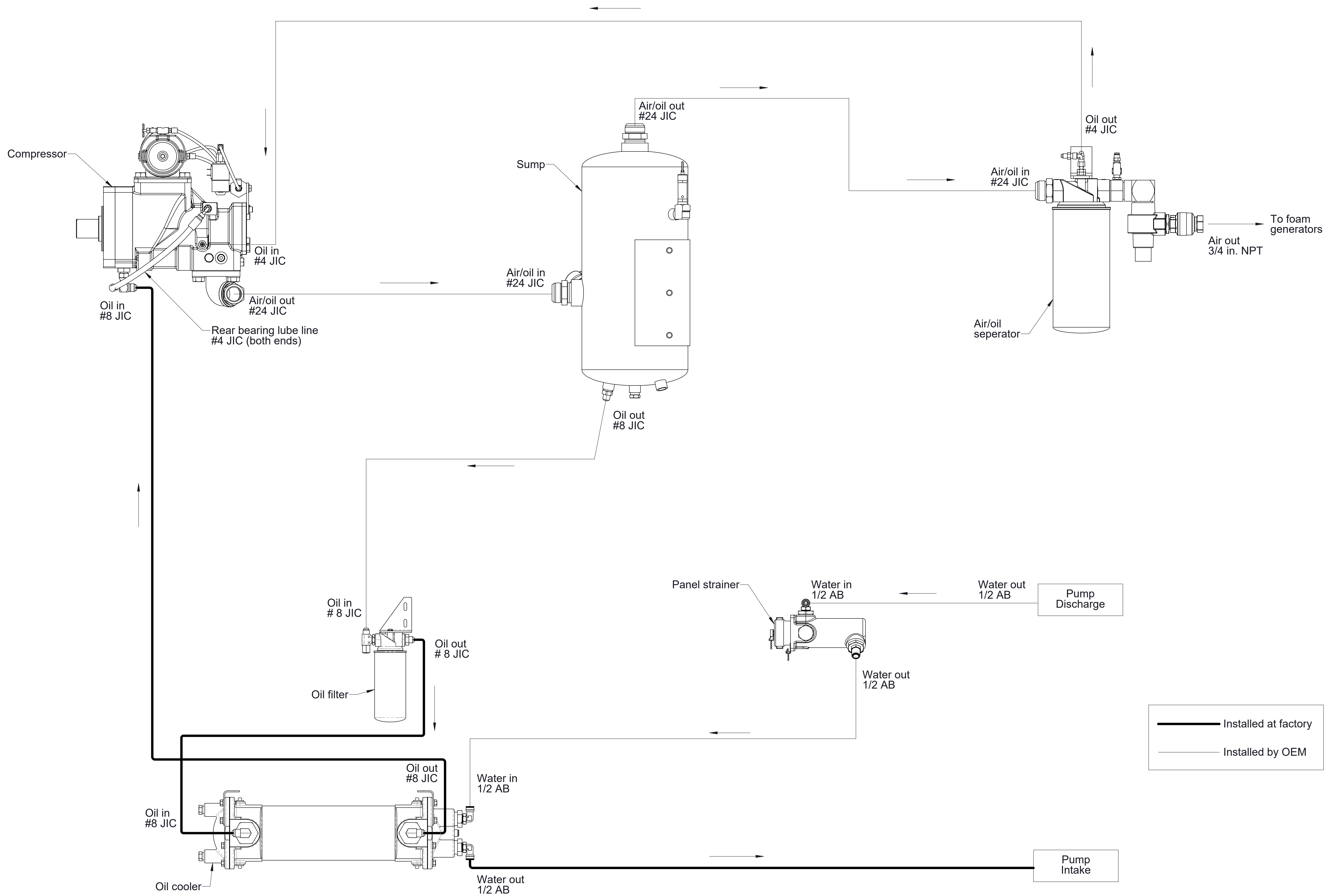


3/4 NPT Connection
(Hoses and fittings furnished)
Order part no. 83360-3B

Optional Auxiliary Connection

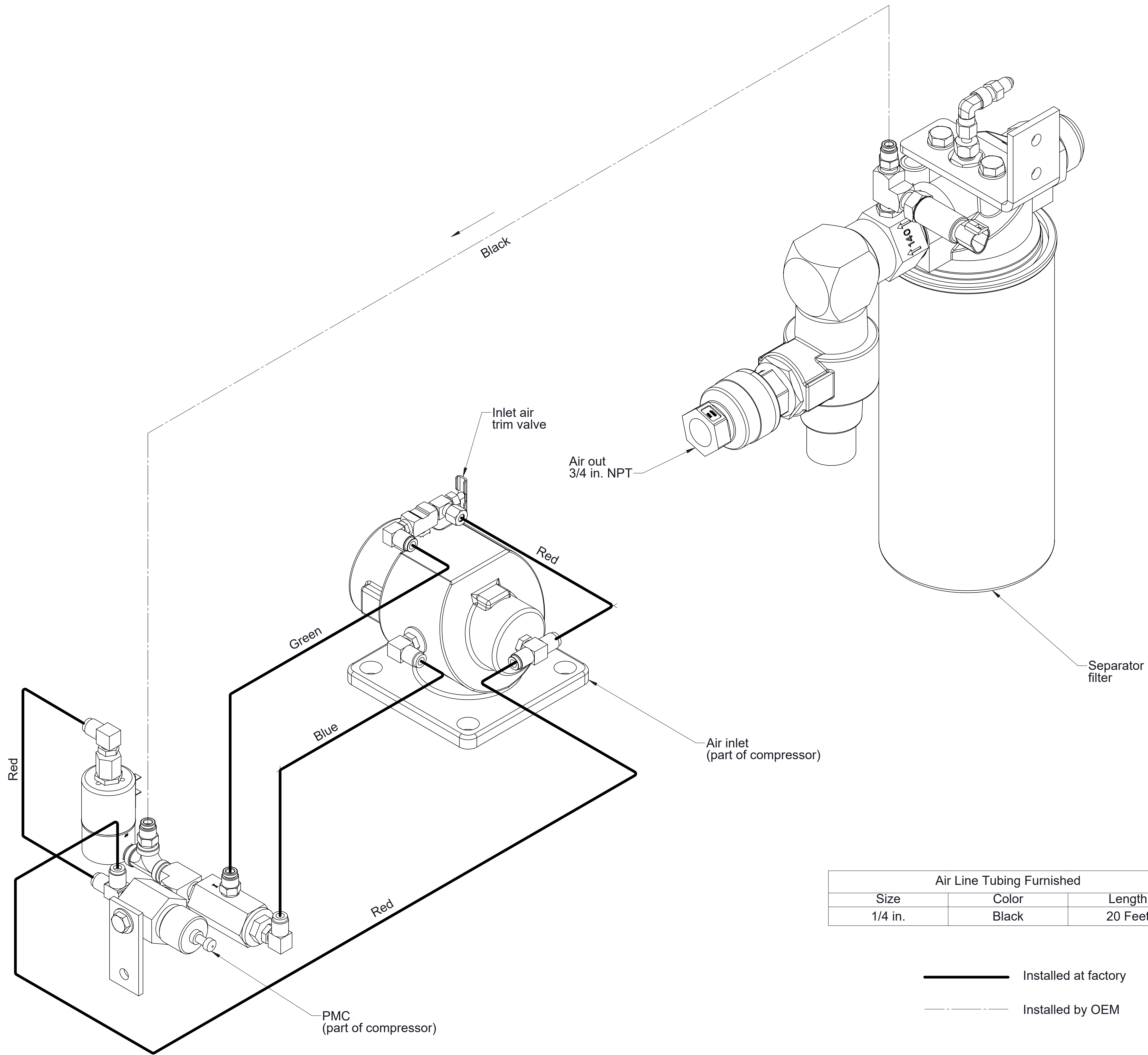


Schematic-Hydraulic
With In-line Oil Cooler Strainer

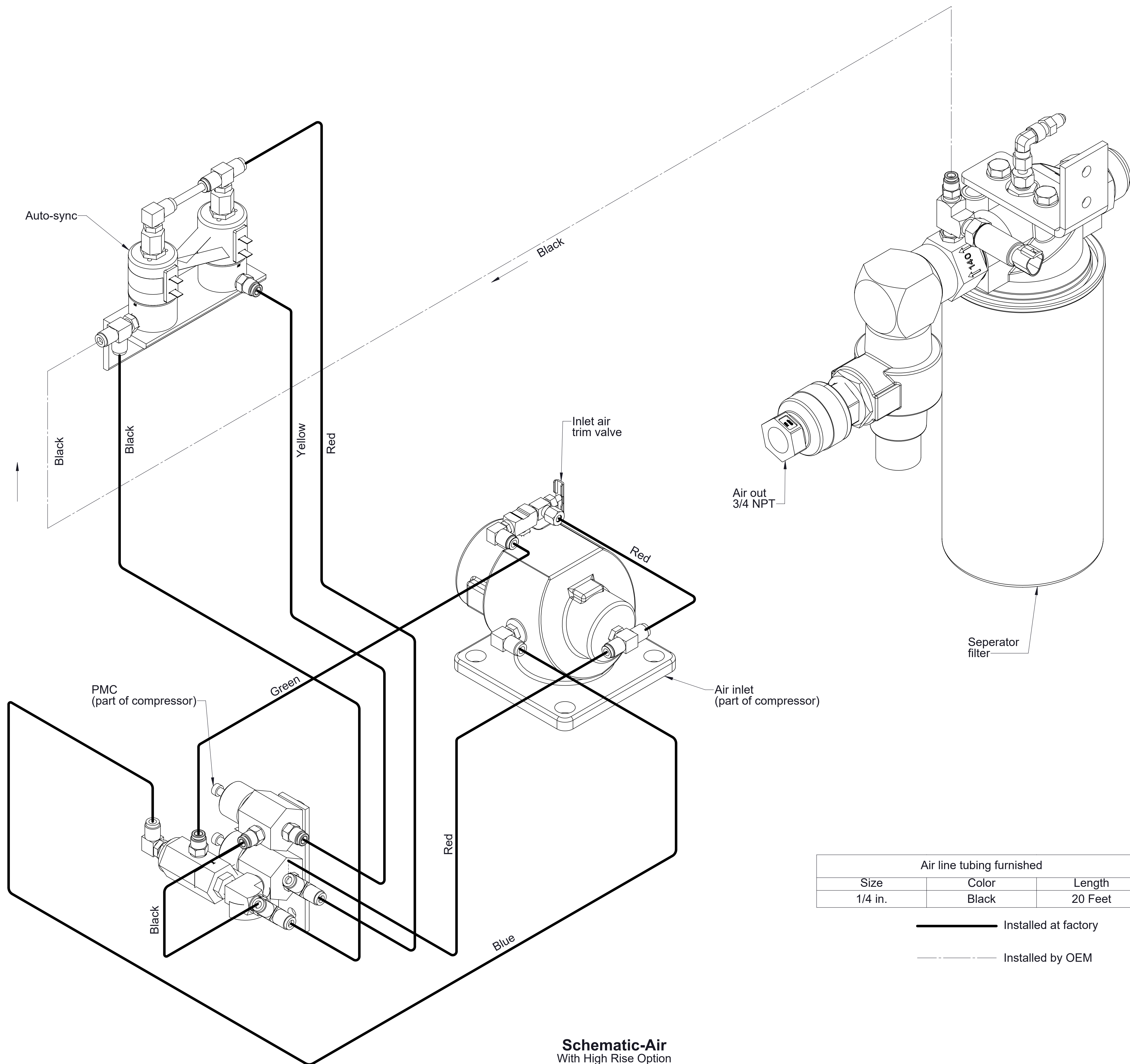


——— Installed at factory
 ——— Installed by OEM

Schematic-Hydraulic
With Panel Mounted Oil Cooler Strainer



Schematic-Air
Without High Rise Option



Air line tubing furnished		
Size	Color	Length
1/4 in.	Black	20 Feet

 Installed at factory
 Installed by OEM

Schematic-Air
With High Rise Option