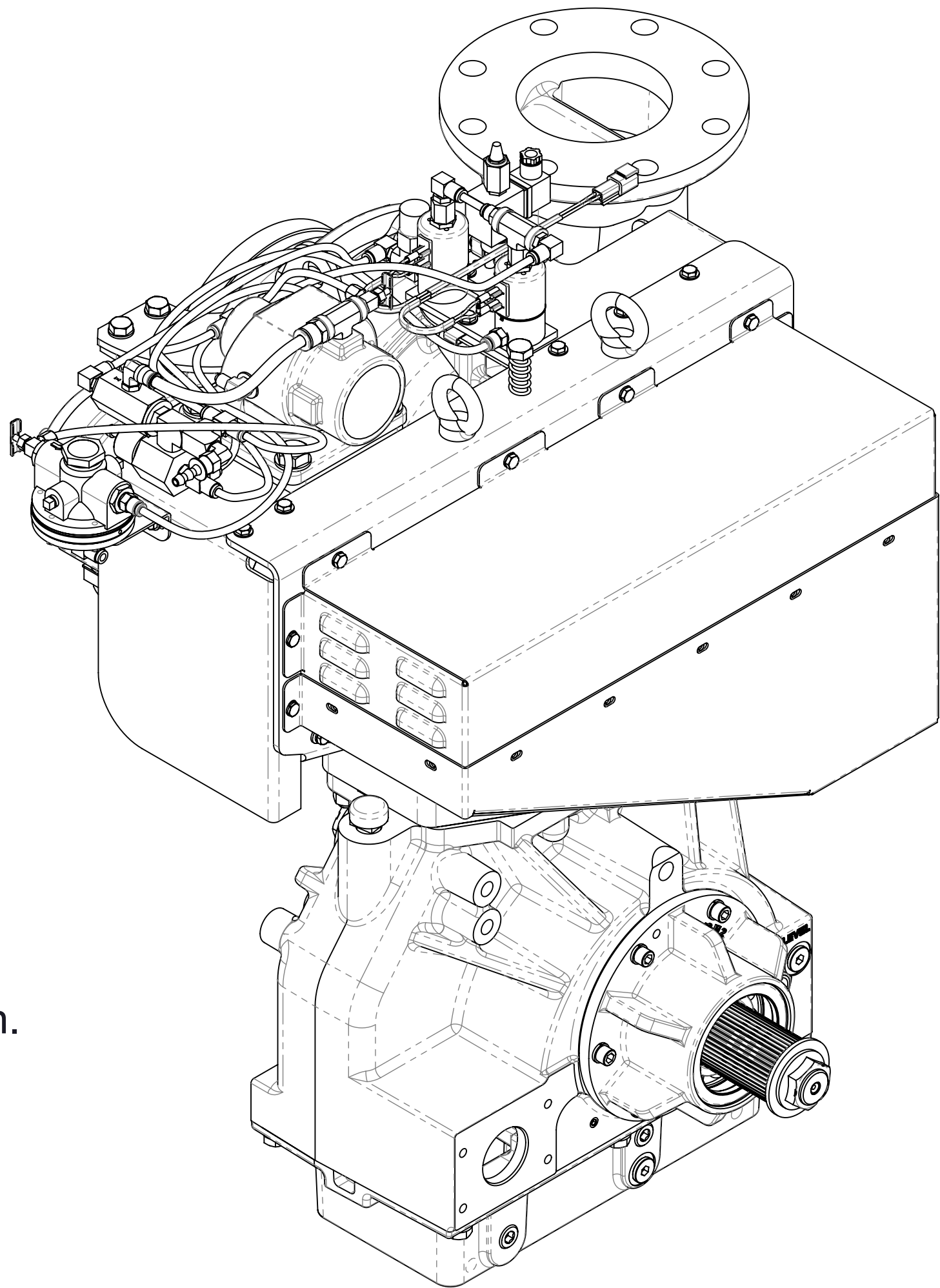


S100C22 Series Fire Pump with Eclipse ES™ CAFS  
Dimensional Drawings

Item		See Page	
		Input and Output Shaft	Input Shaft Only
Pump Models		2	3
Ratio and Drop Dimensions		4	4
Compressor	Electrical and Plumbing Schematics	5	5
	Components Shipped Loose	6, 7	6, 7
S100 Pump Intake and Discharge Options		See DPL83918	
C22 Transmission Options			

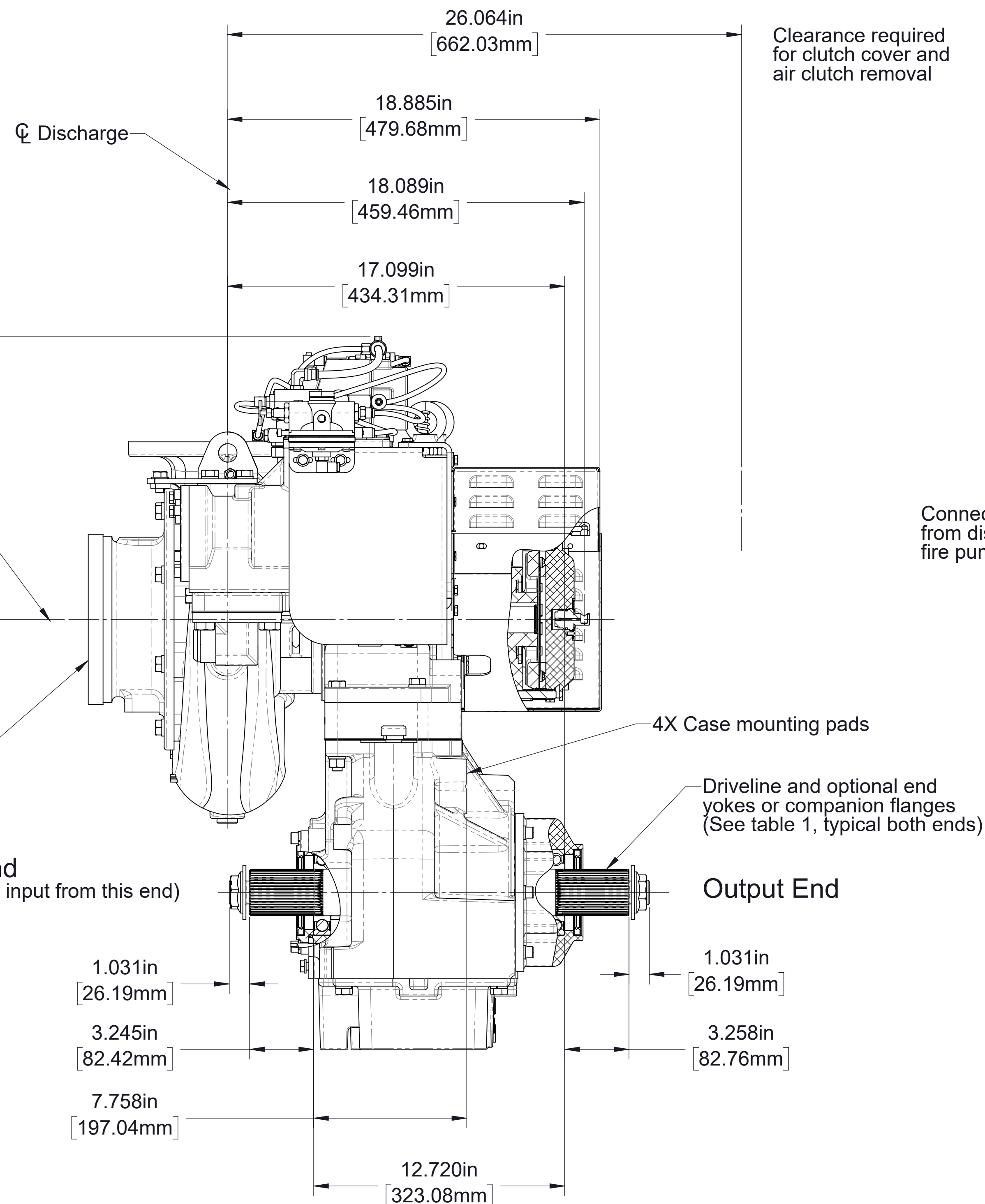


Note: When ordering furnish the following information:

- 1. Pump models (see page 2 or 3).
- 2. Drive to driven ratio (see page 4).
- 3. Discharge position: Discharge flange facing up is the only available position.
- 4. Optional discharge fitting see DPL83918. Note that the optional discharge manifold may only be mounted perpendicular to the pump intake.



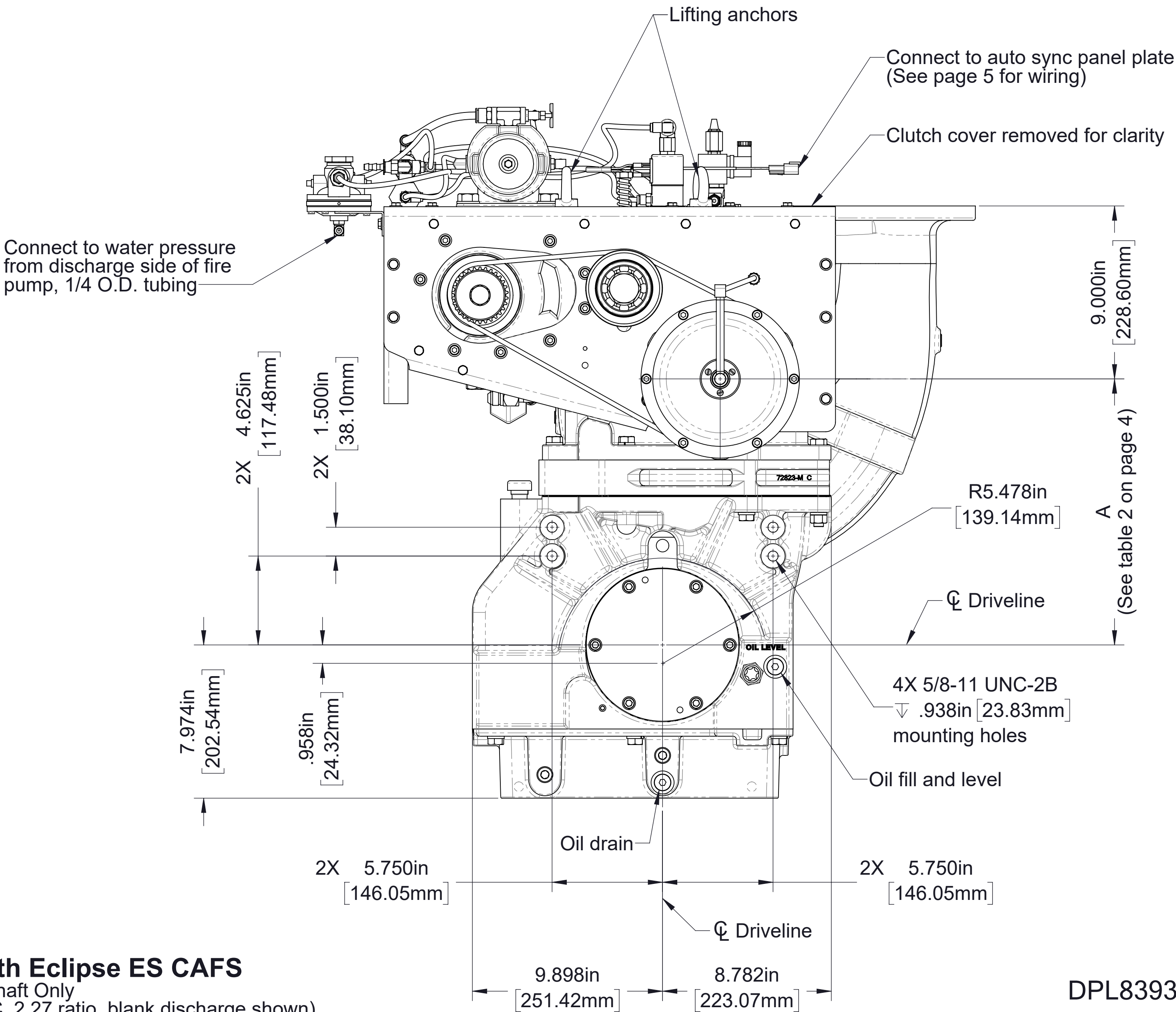
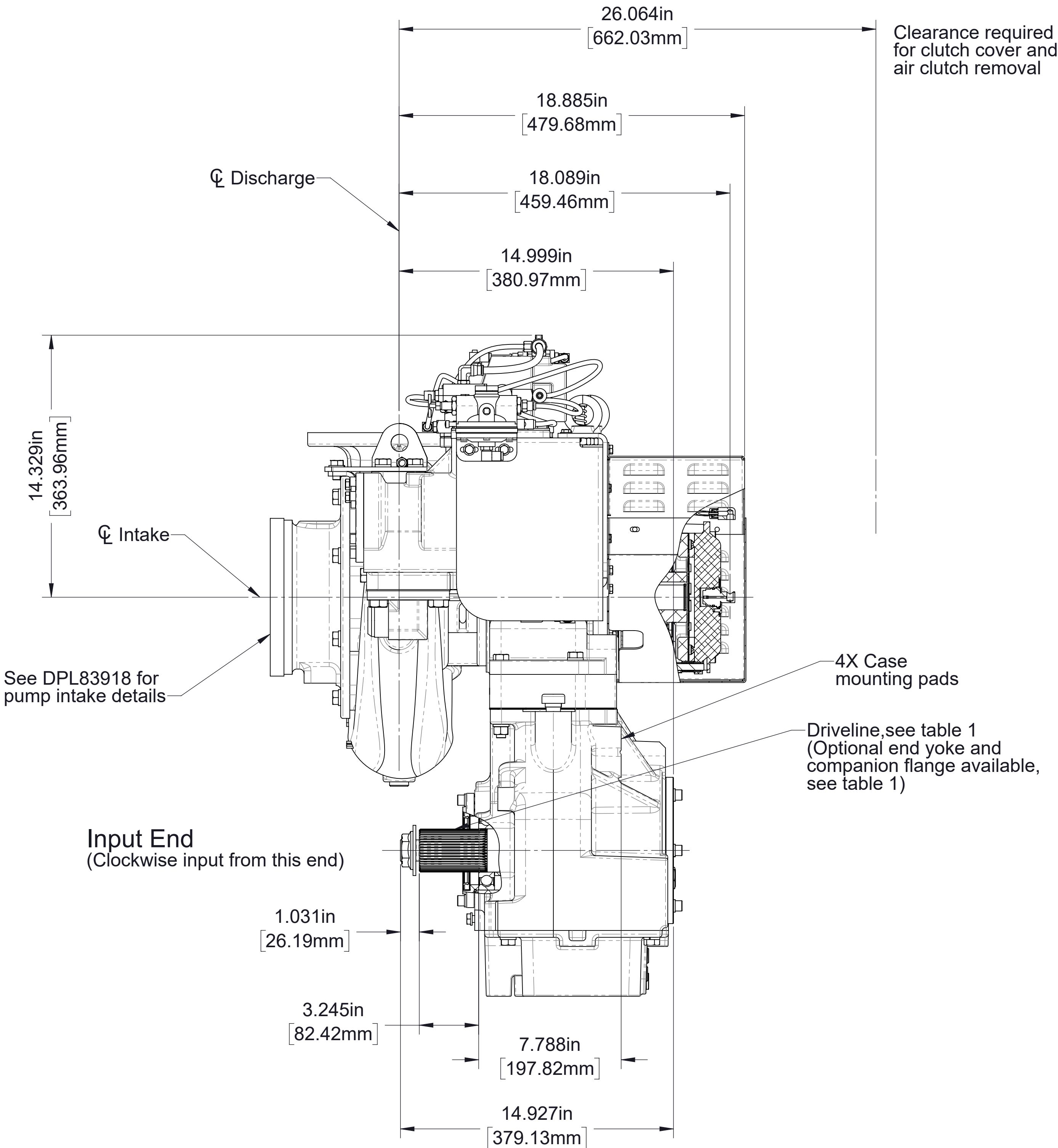
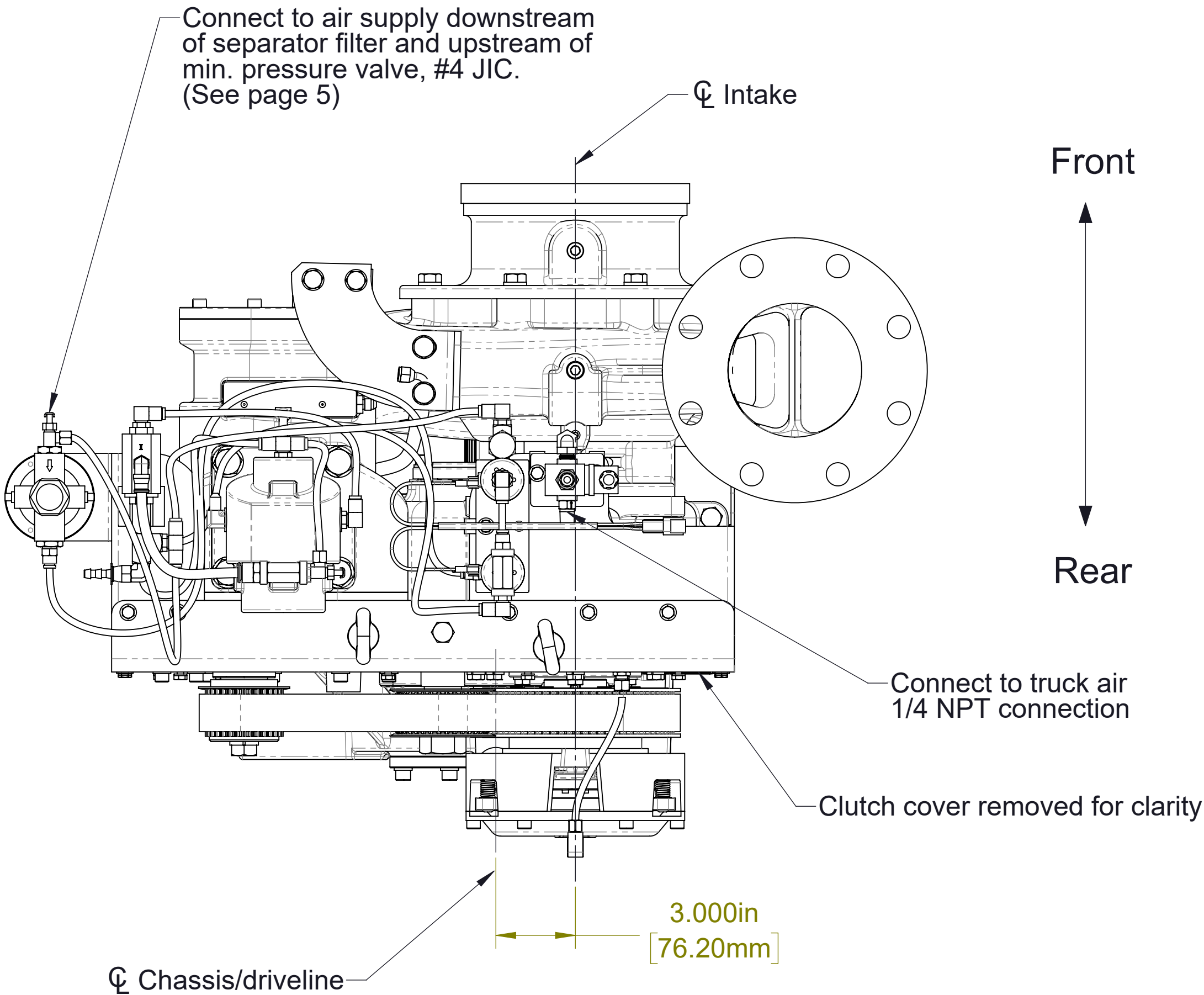
Table 1 - Available Driveline / Models							
Driveline			Optional End Yokes and Companion Flanges Available from Waterous				Model
Type	Size	Spline	Yoke		Cross and Bearing Kit	Companion Flange	S100C22C, S100C22D, S100C22E, S100C22F
			Spicer Series	Part Number			
Extra Heavy Duty	2.35 Inch	2.530-46T Involute	1480/1610	--	--	V 3719	
			1650/1710	--	--	V 3619	
			1710	V 2837	V 2839	--	
			1810	V 2838	V 2840	--	
			SPL140	V 3388	V 3389	--	



DPL83939  
Page 2 of 7



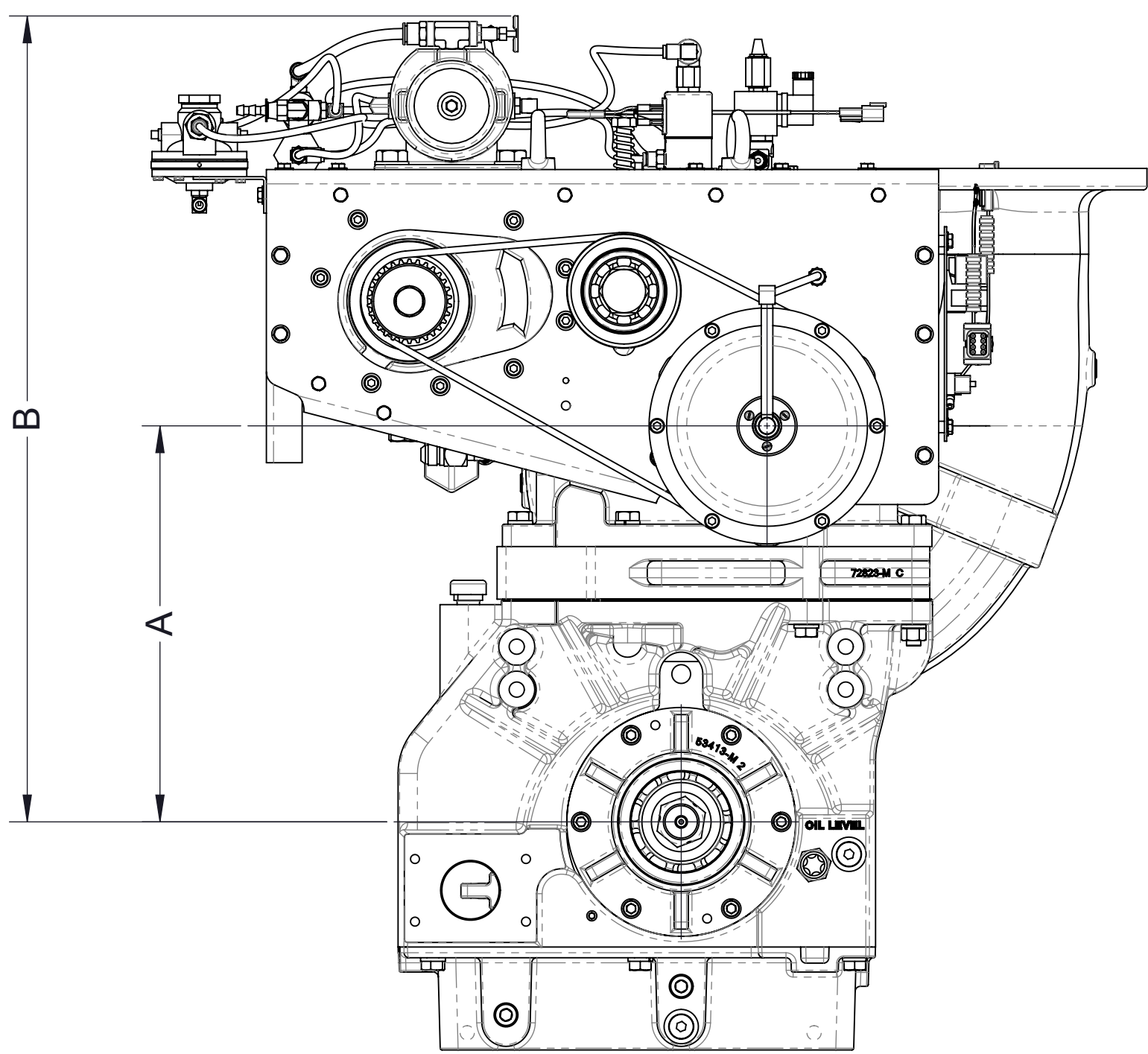
Table 1 - Available Driveline / Models							
Driveline			Optional End Yokes and Companion Flanges Available from Waterous				Model
Type	Size	Spline	Yoke		Cross and Bearing Kit	Companion Flange	S100C22C, S100C22D, S100C22E, S100C22F
			Spicer Series	Part Number		Part Number	
Extra Heavy Duty	2.35 Inch	2.530-46T Involute	1480/1610	--	--	V 3719	
			1650/1710	--	--	V 3619	
			1710	V 2837	V 2839	--	
			1810	V 2838	V 2840	--	
			SPL140	V 3388	V 3389	--	



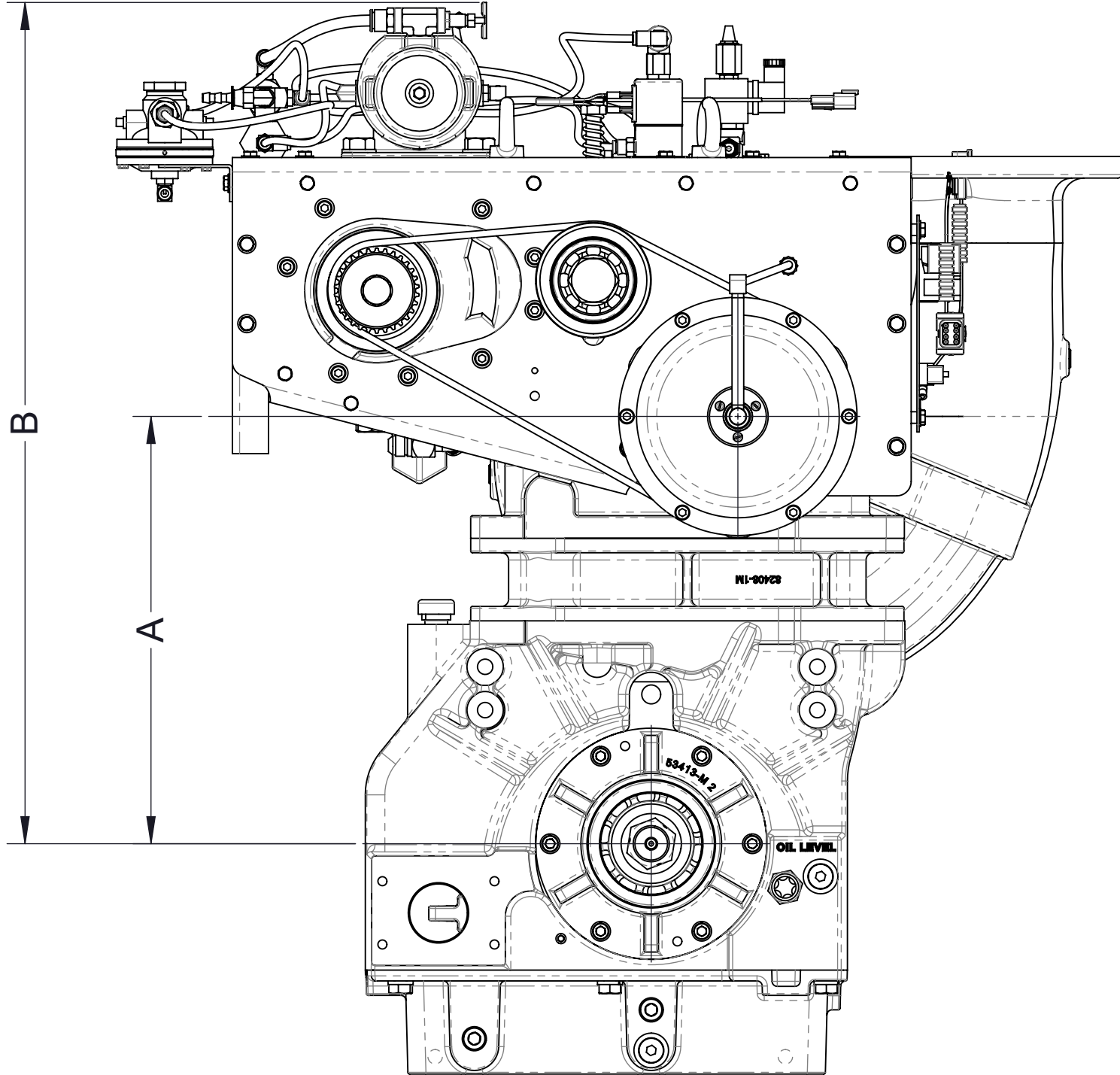
Note:  
1. See table 2 on page 4 for ratios.

**S100C22 Series with Eclipse ES CAFS**  
Input Shaft Only  
(Clockwise input, model S100C22C, 2.27 ratio, blank discharge shown)

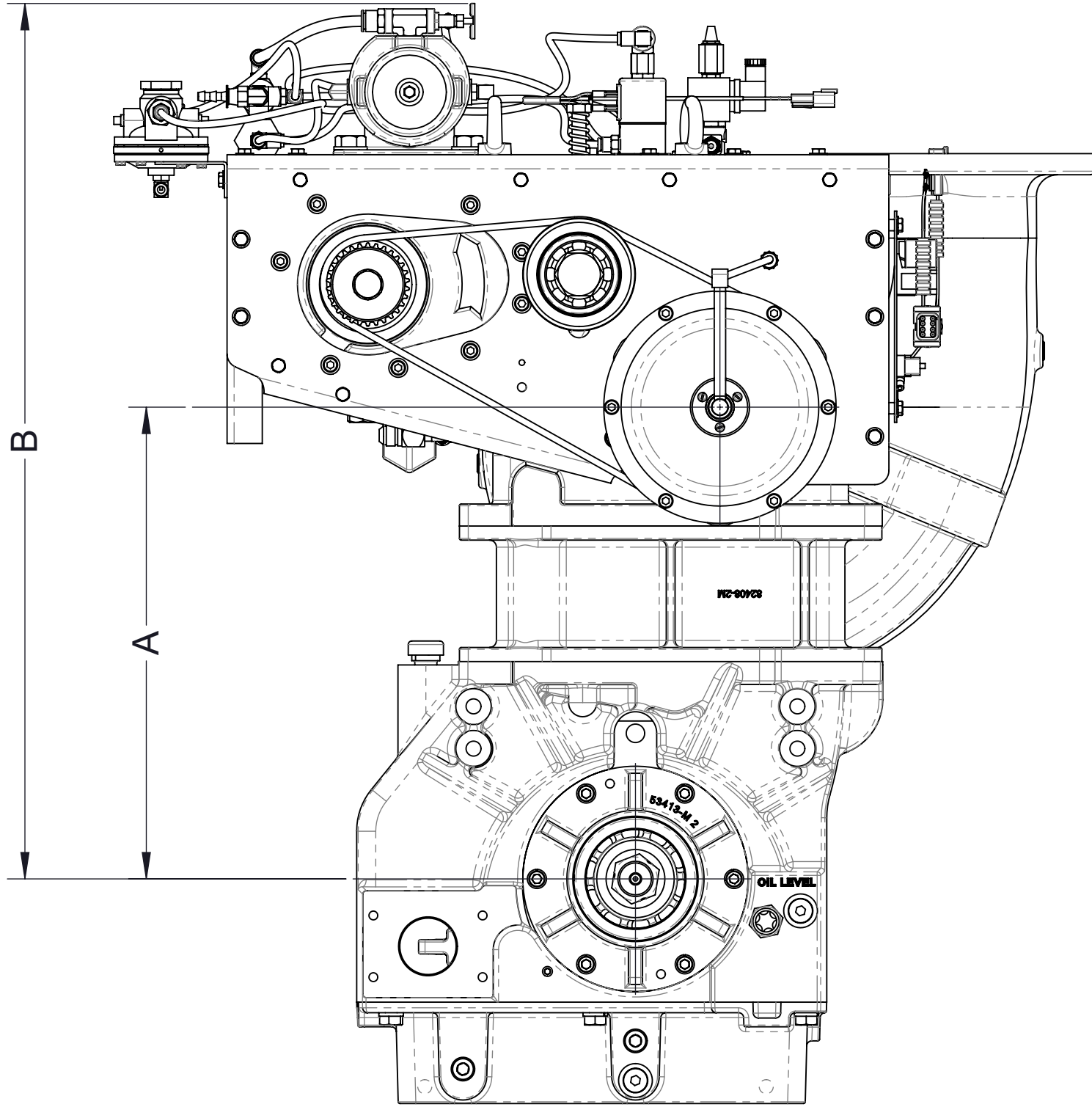




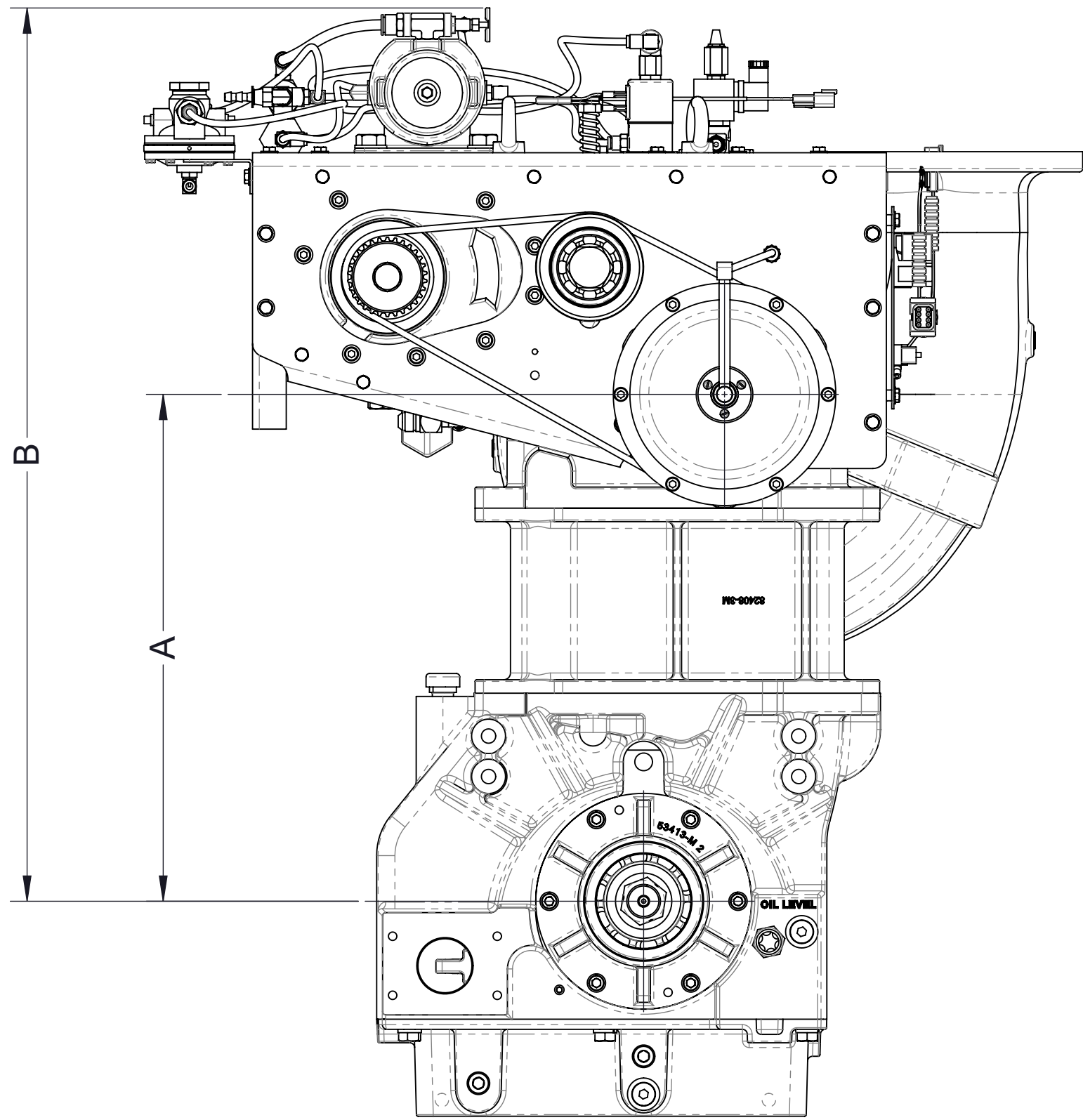
**S100C22C Model**  
(2.27 ratio shown)



**S100C22D Model**  
(2.27 ratio shown)



**S100C22E Model**  
(2.27 ratio shown)

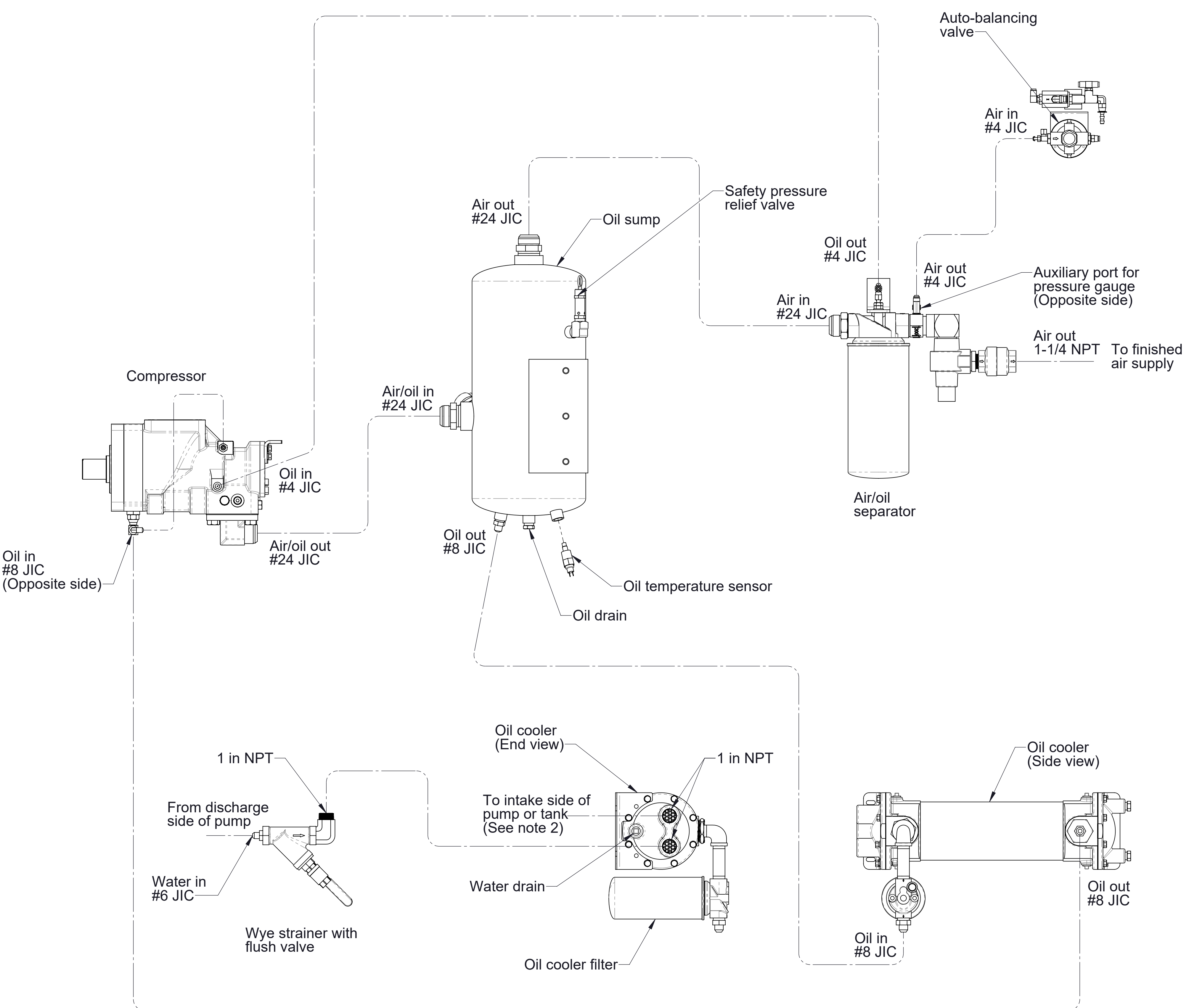


**S100C22F Model**  
(2.27 ratio shown)

Table 2 - Available Ratios								
Drive to Driven Ratio	S100C22C		S100C22D		S100C22E		S100C22F	
	Dimension A	Dimension B	Dimension A	Dimension B	Dimension A	Dimension B	Dimension A	Dimension B
1.27	14.312/363.52	28.135/714.63	14.825/376.56	28.648/727.67	16.861/428.27	30.684/779.38	18.892/479.86	32.715/830.97
1.41	13.899/353.03	27.722/704.14	14.931/379.25	28.754/730.36	16.971/431.06	30.794/782.17	19.002/482.65	32.825/833.76
1.48	13.878/352.50	27.701/703.61	14.907/378.64	28.730/729.75	16.951/430.56	30.774/781.67	18.981/482.12	32.804/833.23
1.58	13.756/349.40	27.579/700.51	14.788/375.62	28.611/726.73	16.830/427.48	30.653/778.59	18.861/479.07	32.684/830.18
1.69	13.839/351.51	27.662/702.62	14.876/377.85	28.699/728.96	16.932/429.84	30.746/780.95	18.961/481.61	32.784/832.72
1.79	14.045/356.74	27.868/707.85	15.072/382.83	28.895/733.94	17.127/435.03	30.950/786.14	19.168/486.87	32.991/837.98
1.88	13.690/347.73	27.513/698.84	14.717/373.81	28.540/724.92	16.773/426.03	30.596/777.14	18.809/477.75	32.632/828.86
1.97	13.870/352.30	27.693/703.41	14.912/378.76	28.735/729.87	16.970/431.04	30.793/782.15	19.012/482.90	32.835/834.01
2.03	13.984/355.19	27.807/706.30	15.028/381.71	28.851/732.82	17.086/433.98	30.909/785.09	19.132/485.95	32.955/837.06
2.27	13.811/350.80	27.634/701.91	14.856/377.34	28.679/728.45	16.920/429.77	30.743/780.88	18.971/481.86	32.794/832.97
2.46	14.057/357.05	27.880/708.15	15.087/383.21	28.910/734.32	17.154/435.71	30.977/786.82	19.205/487.81	33.028/838.92
2.73	14.115/358.52	27.938/709.63	15.173/385.39	28.996/736.50	16.738/425.15	30.561/776.25	18.804/477.72	32.631/828.83

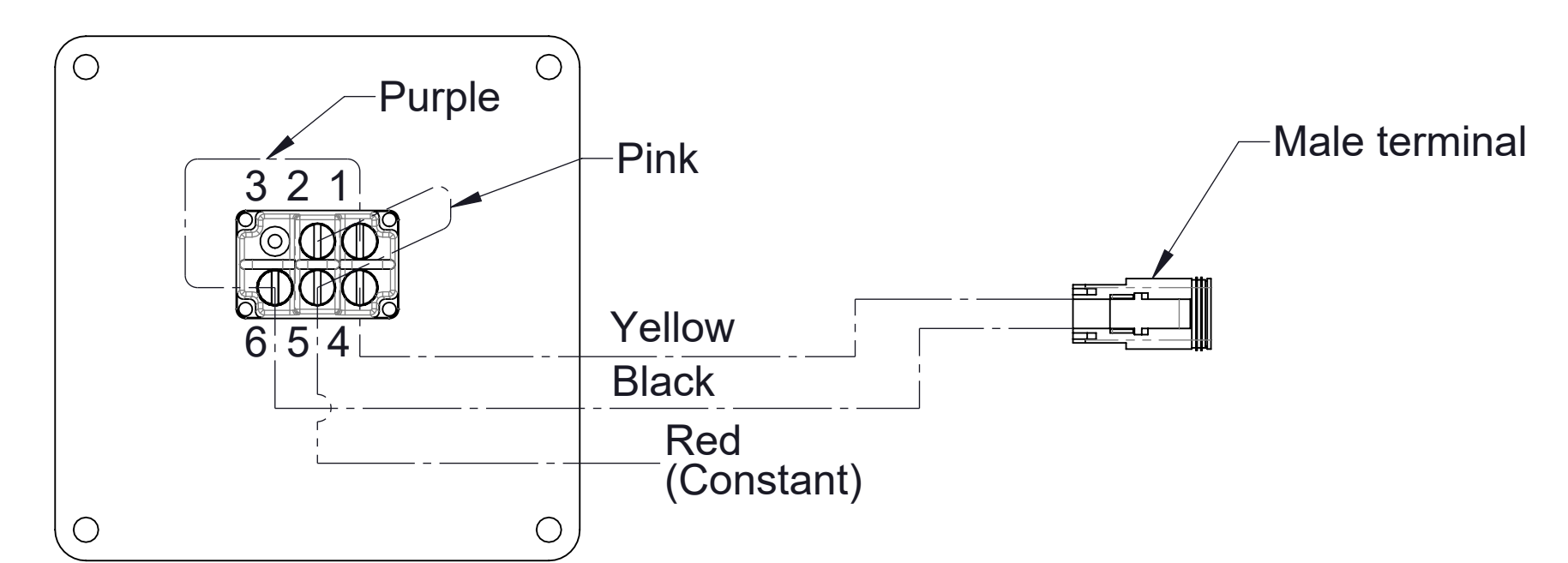
All dimensions shown as inch/millimeter



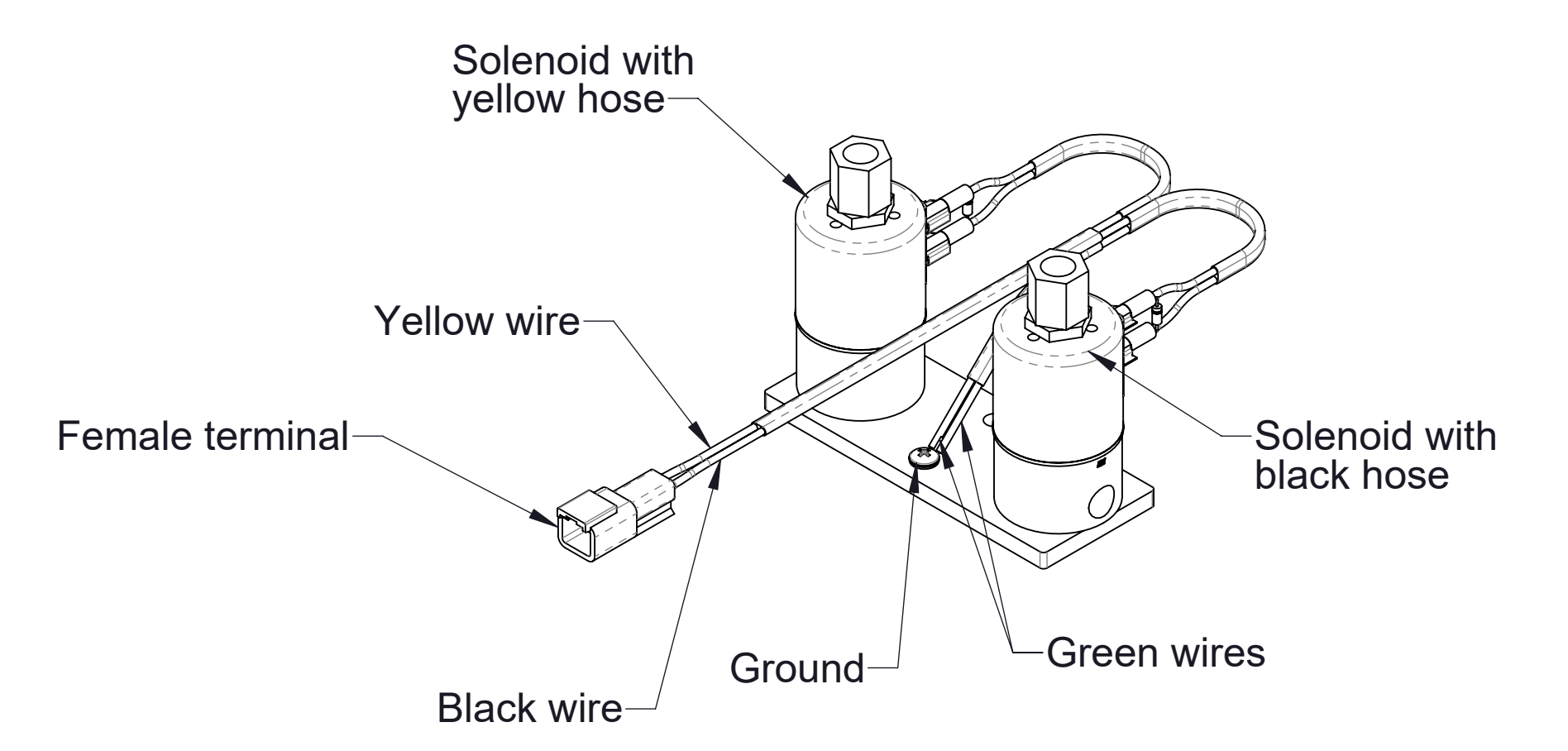


Notes:  
 1. Use hydraulic hoses only.  
 2. Caution: Do not install shut off valve in cooling water line. Line out of oil cooler to be plumbed either to pump intake or to water tank with check valve.

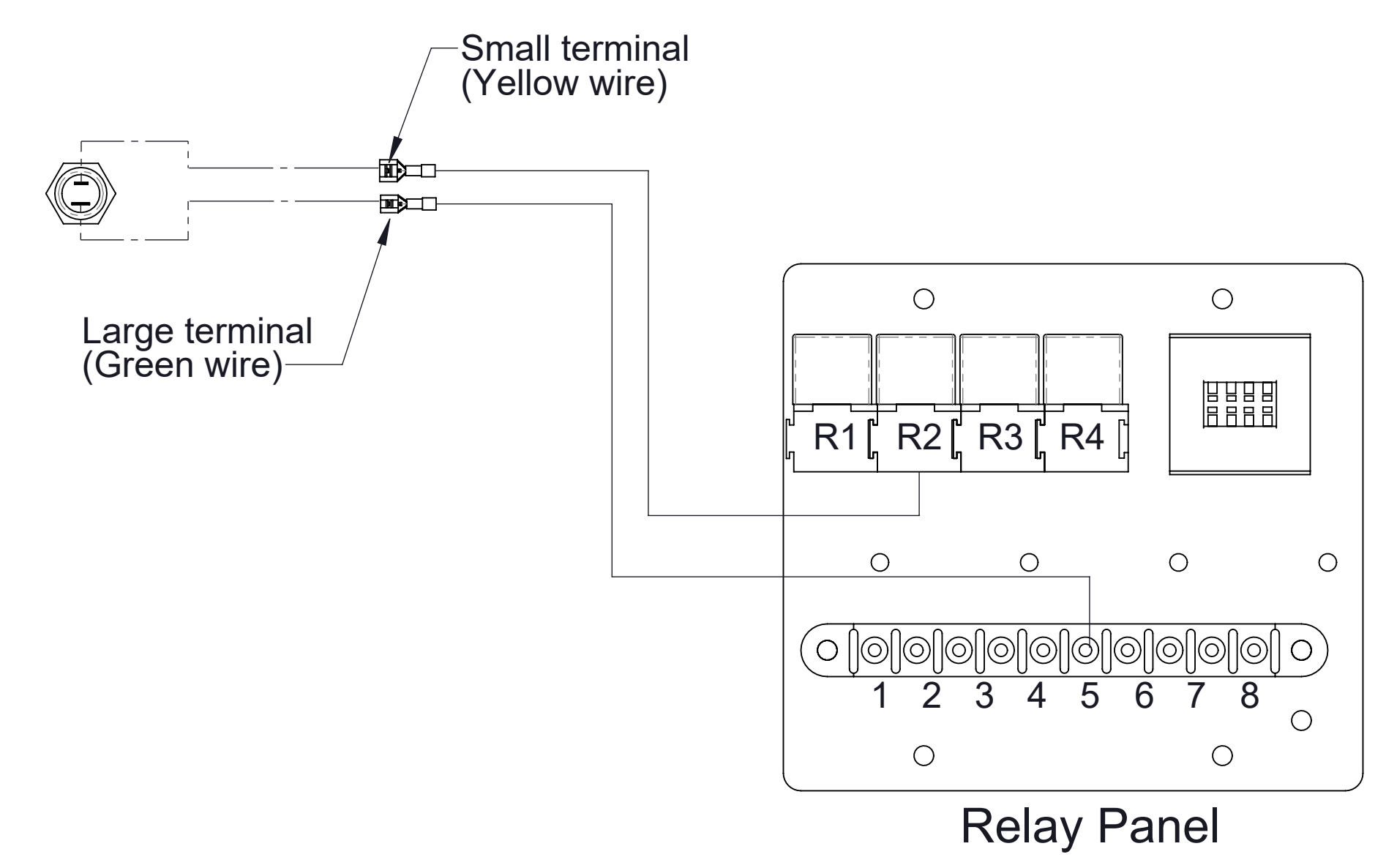
Plumbing Schematic



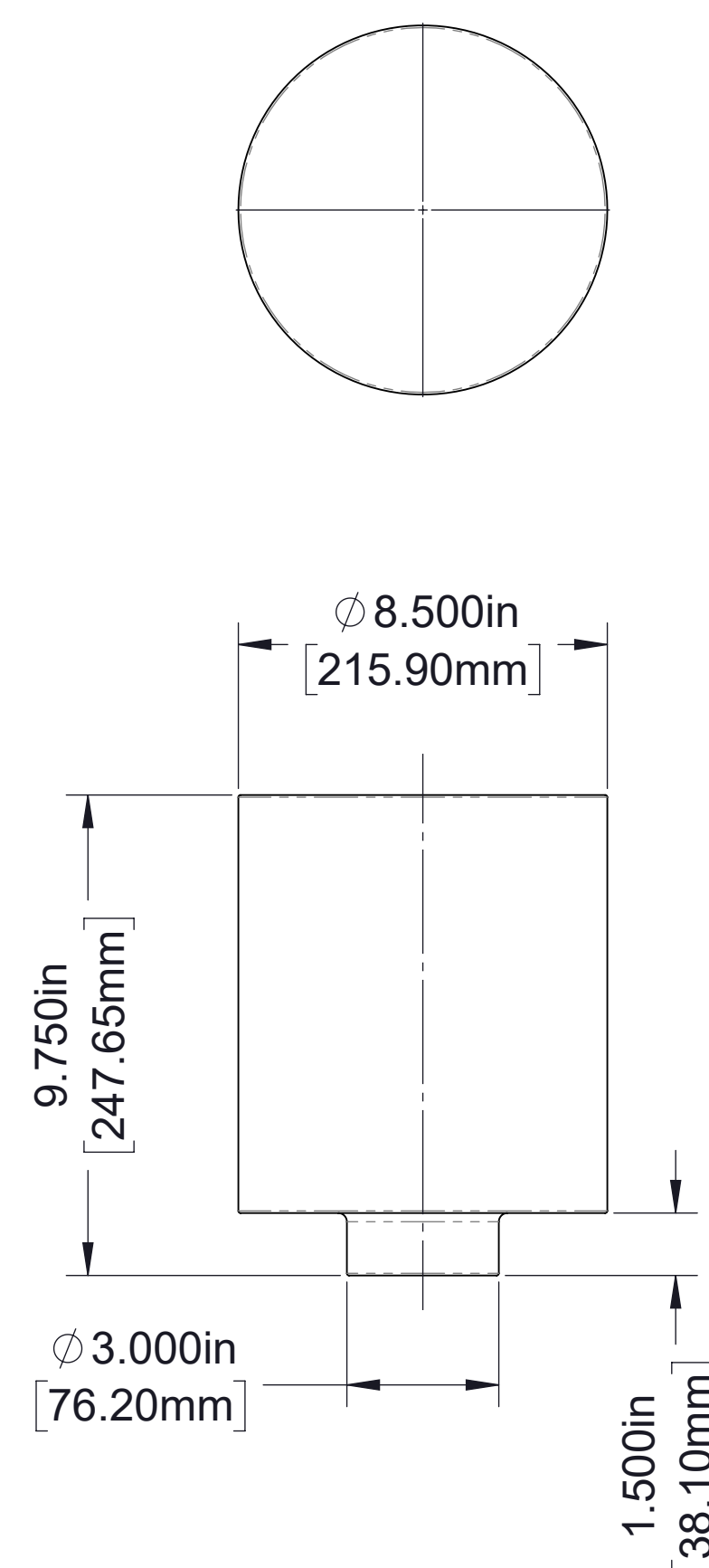
Auto Sync Panel Wiring Schematic



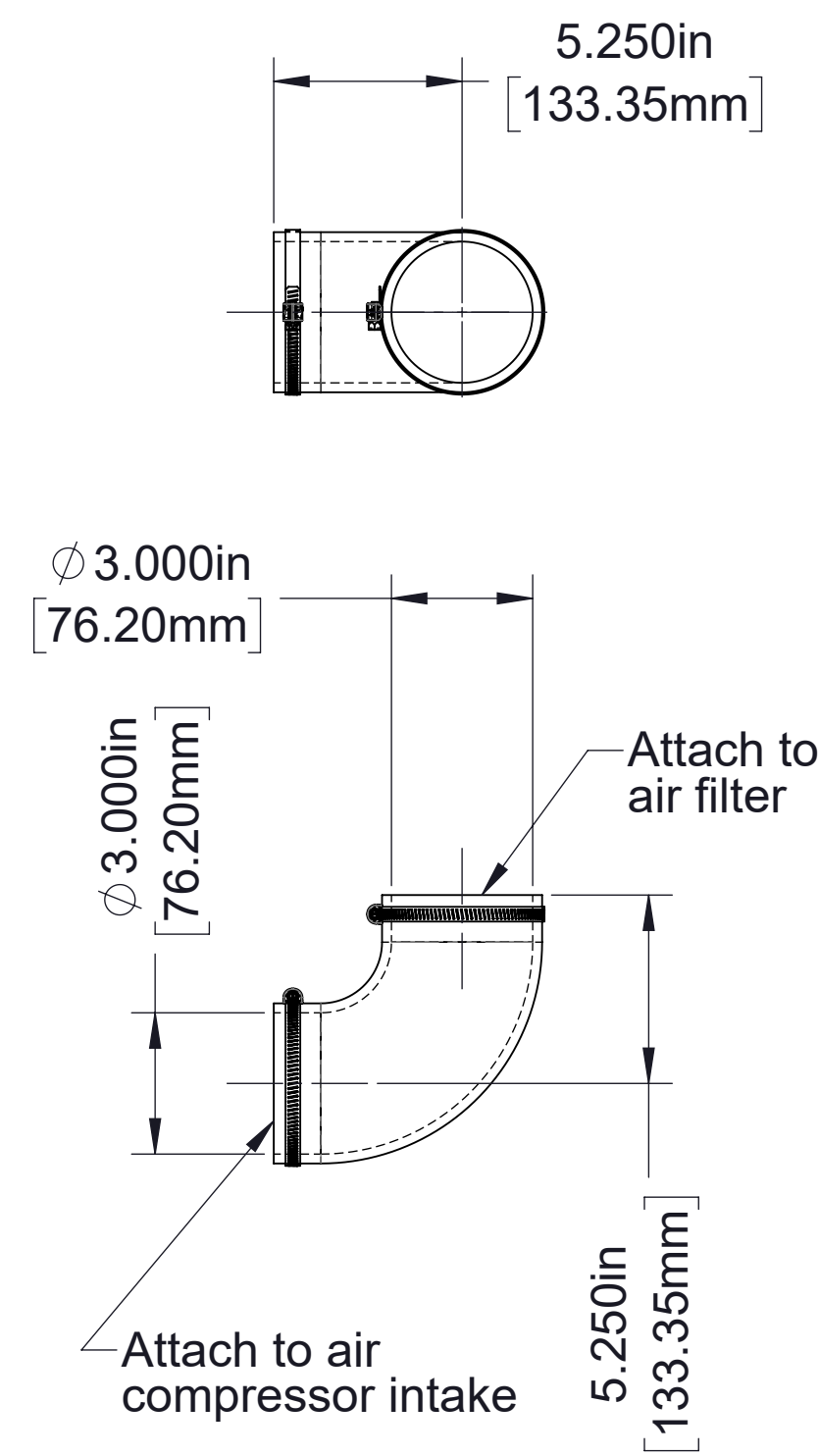
Auto Sync Solenoid Wiring Schematic



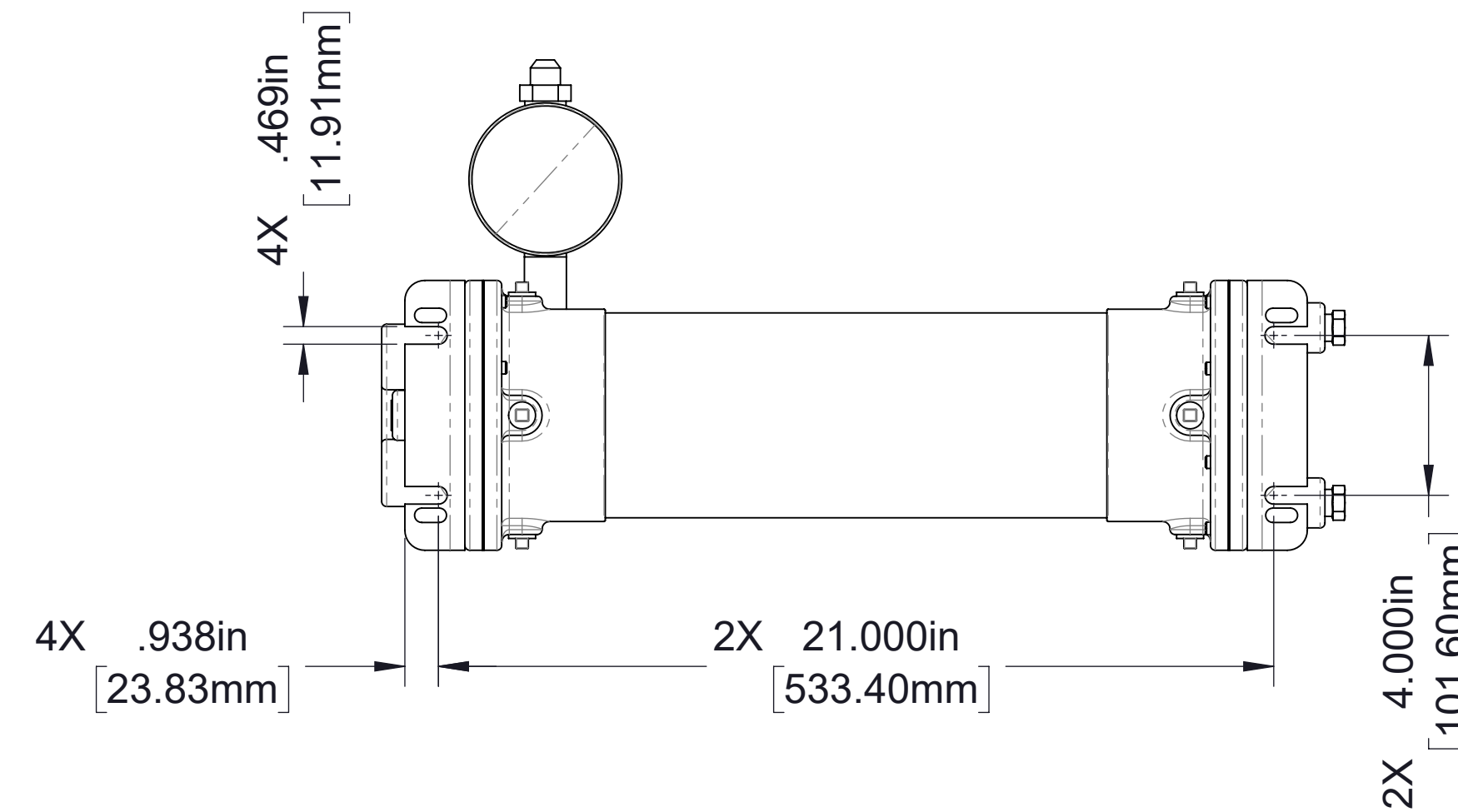
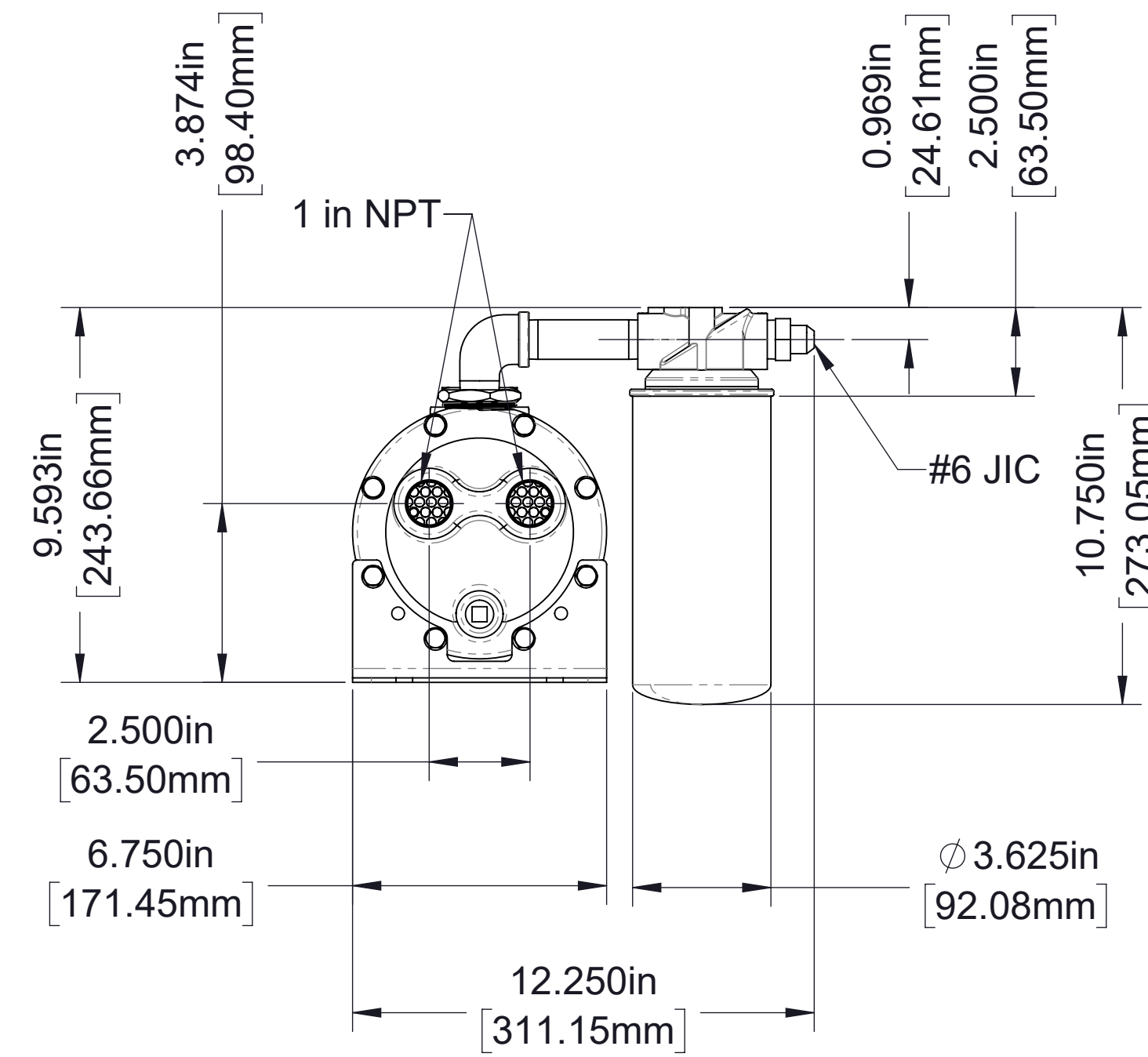
Oil Temperature Sensor Wiring Schematic



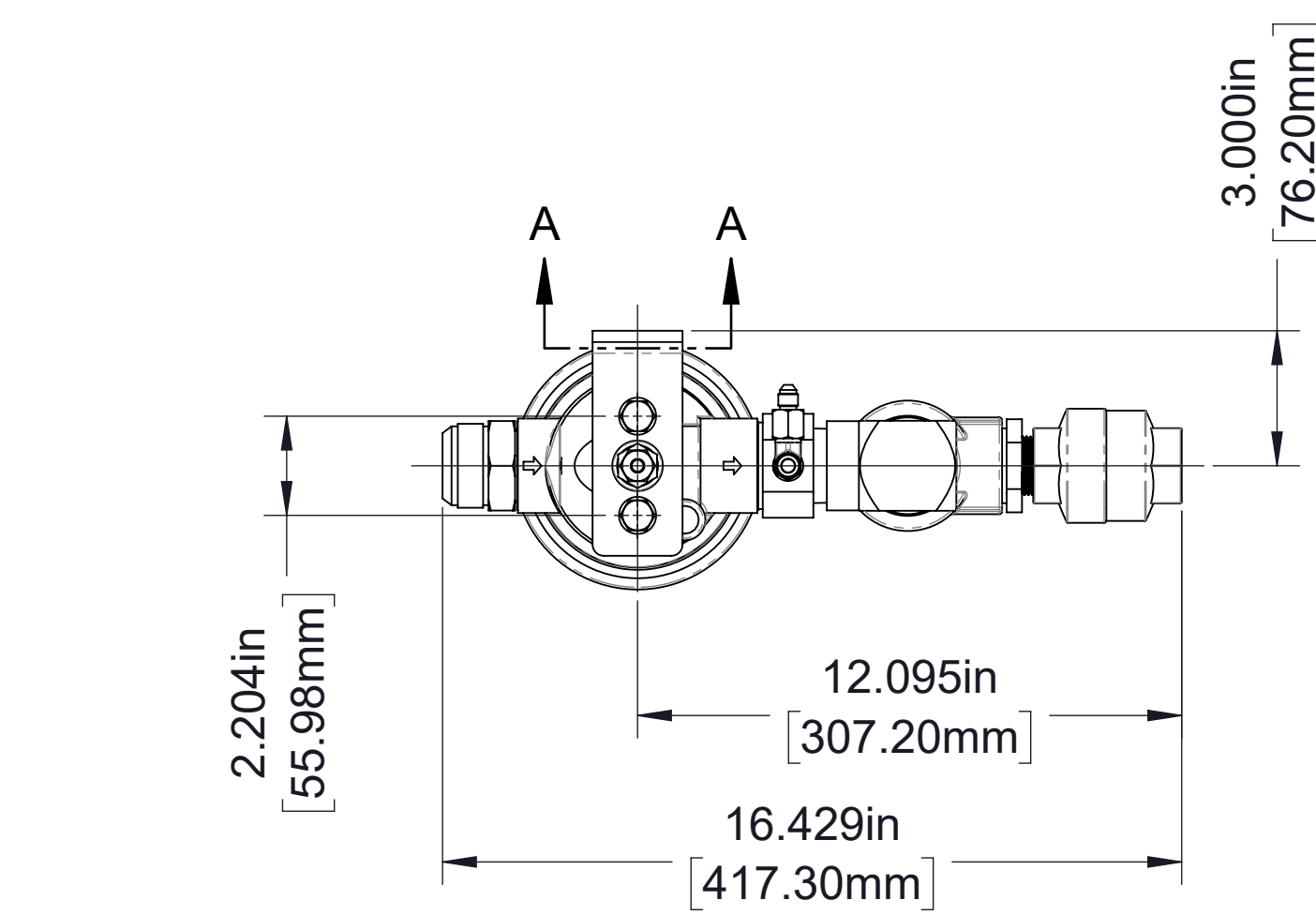
Air Filter



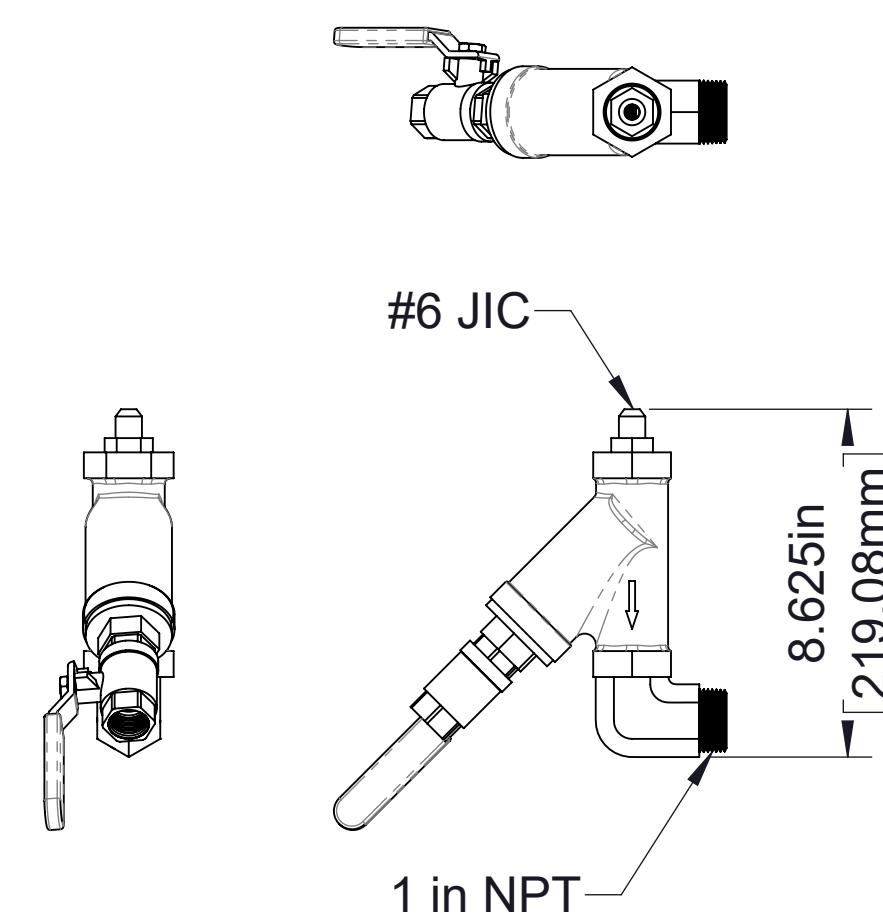
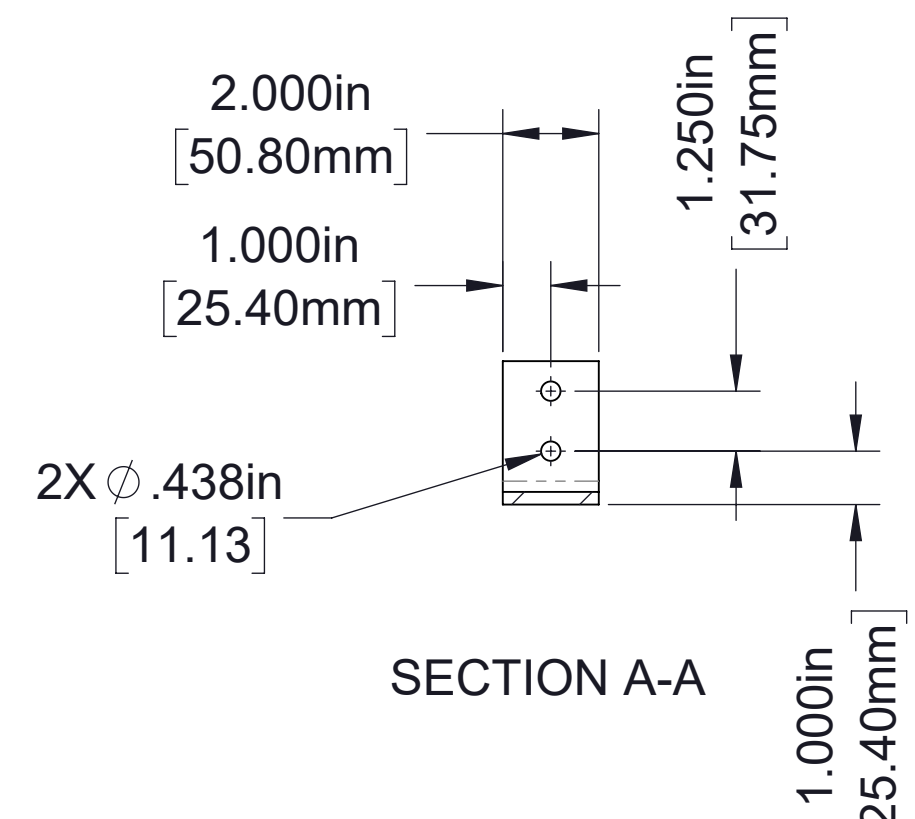
Air Filter Elbow



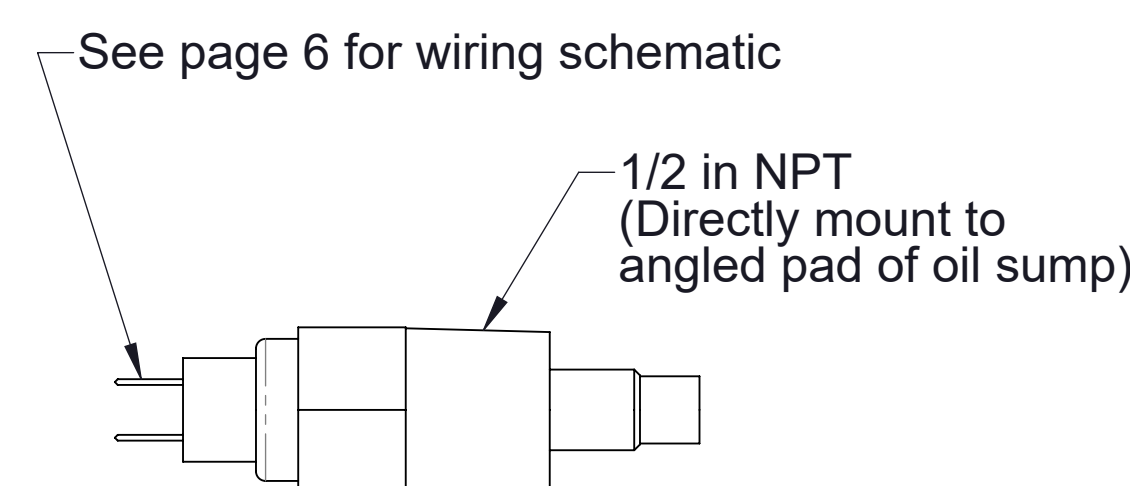
Oil Cooler, Heat Exchanger, Oil Filter and Fittings



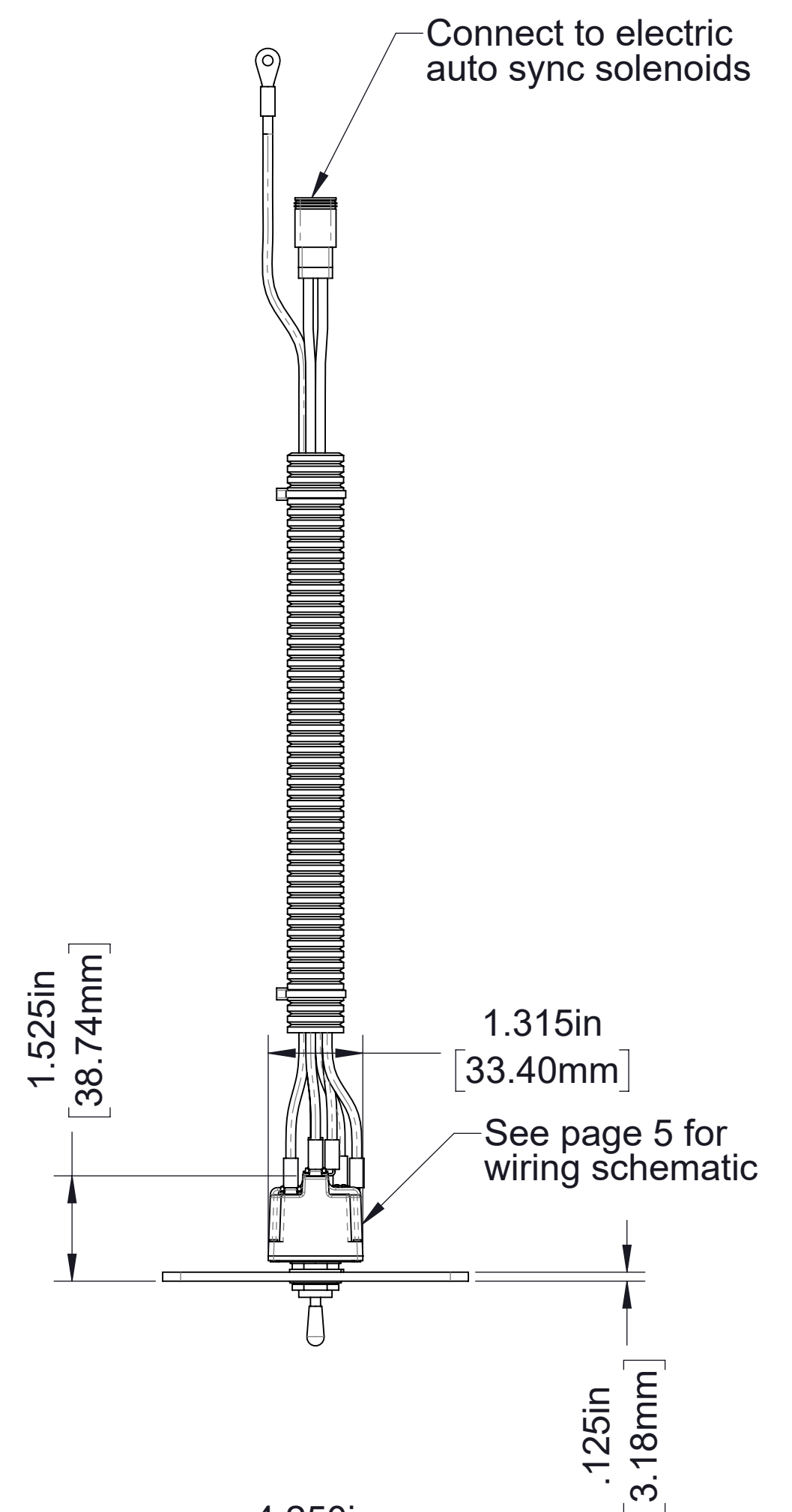
Air/Oil Separator with Min. Pressure Valve



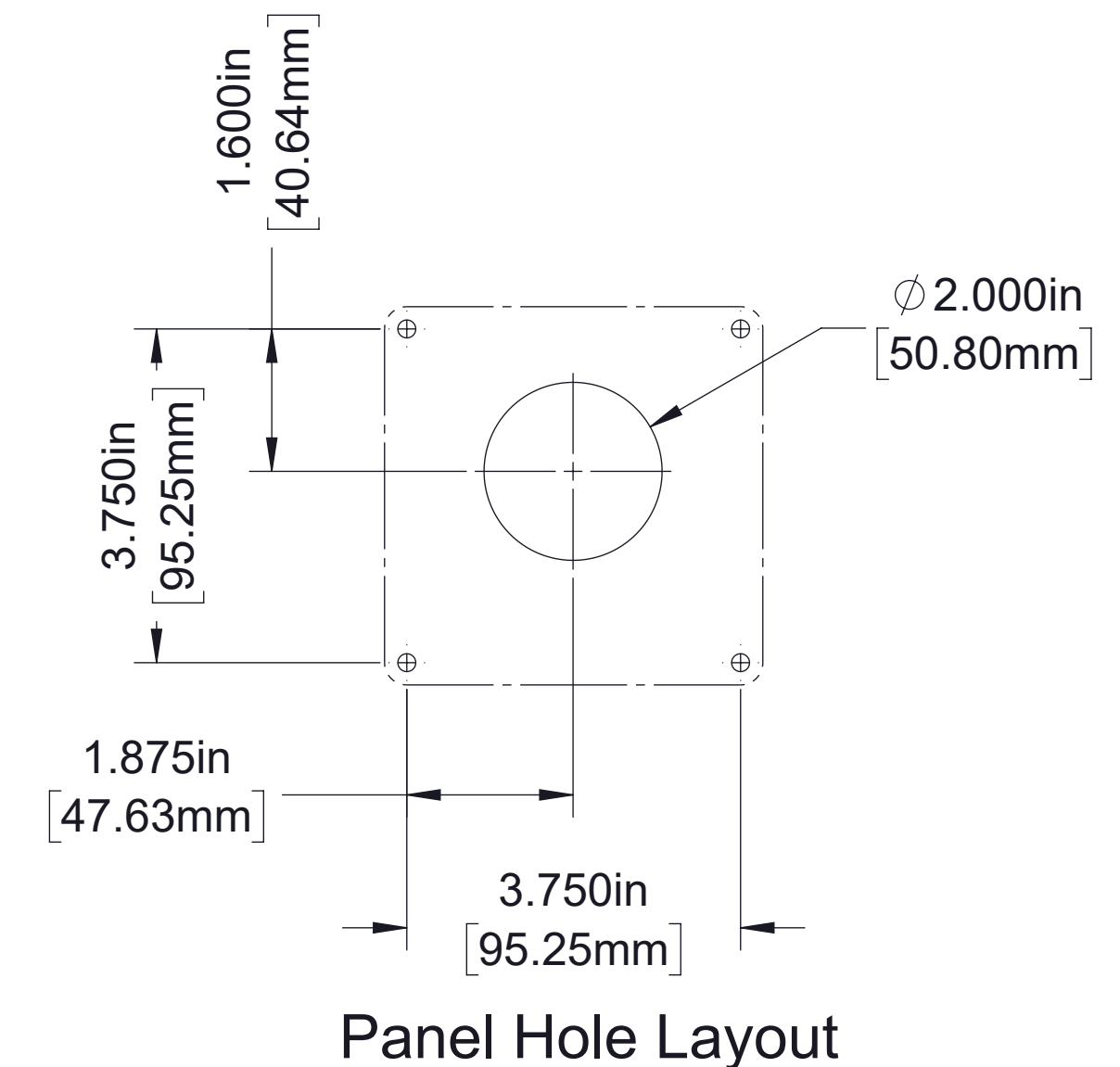
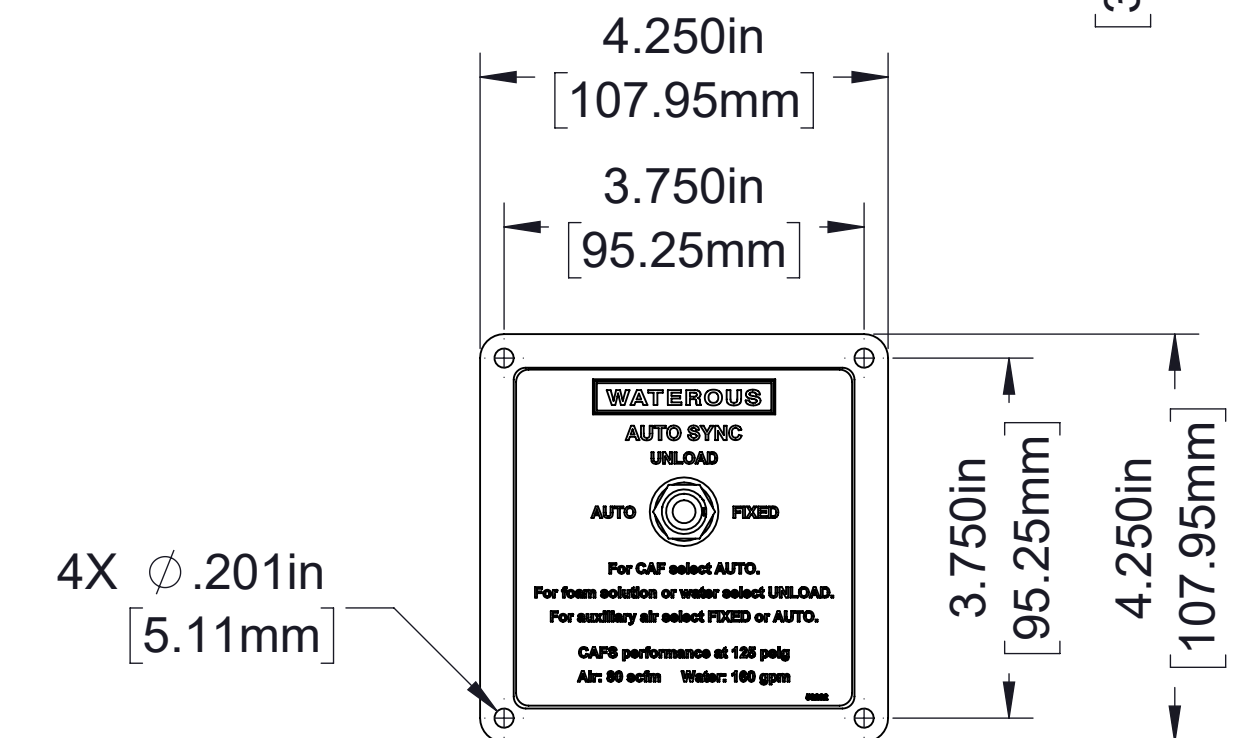
Wye Strainer with Flush Valve



Oil Temperature Sensor

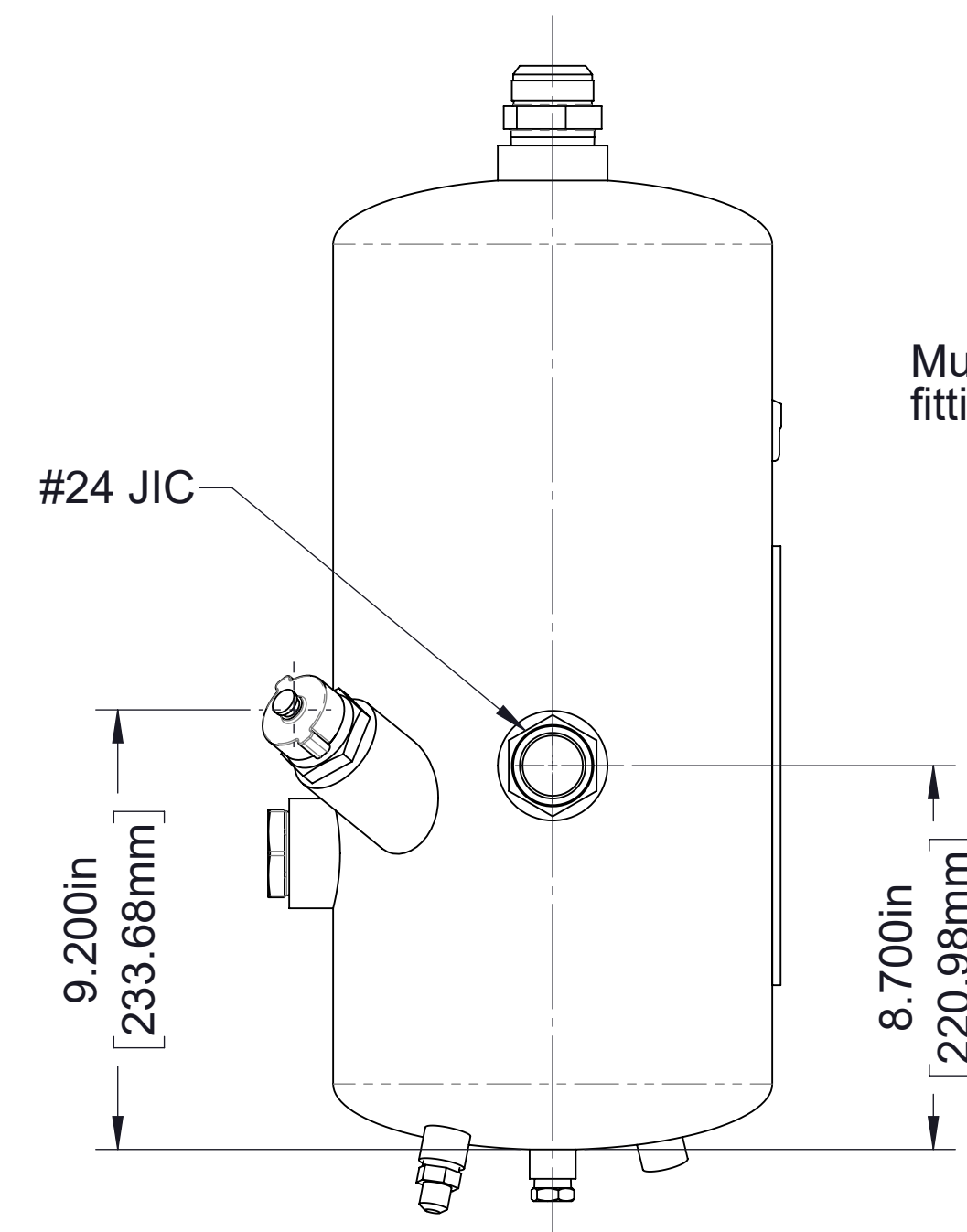
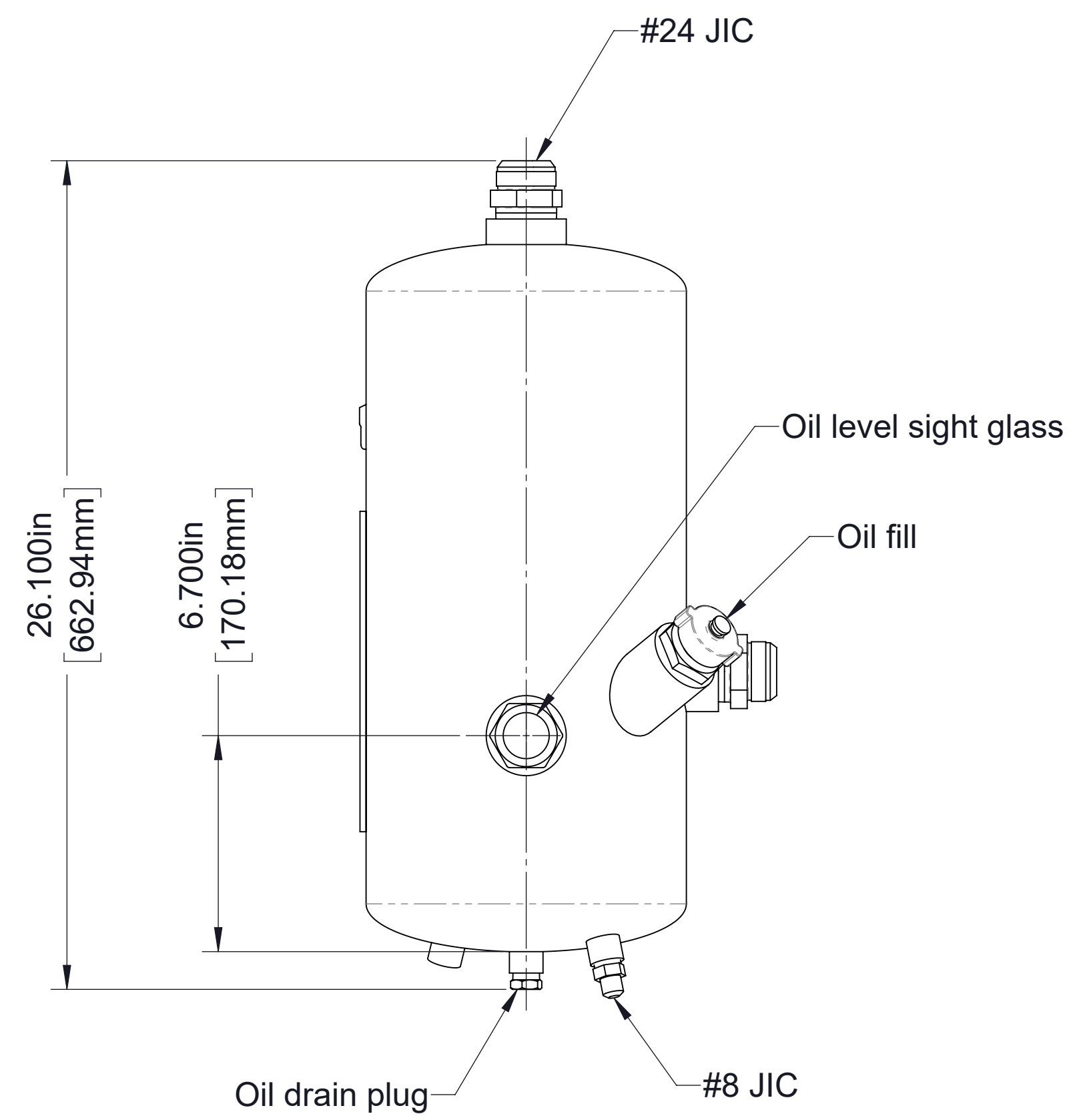
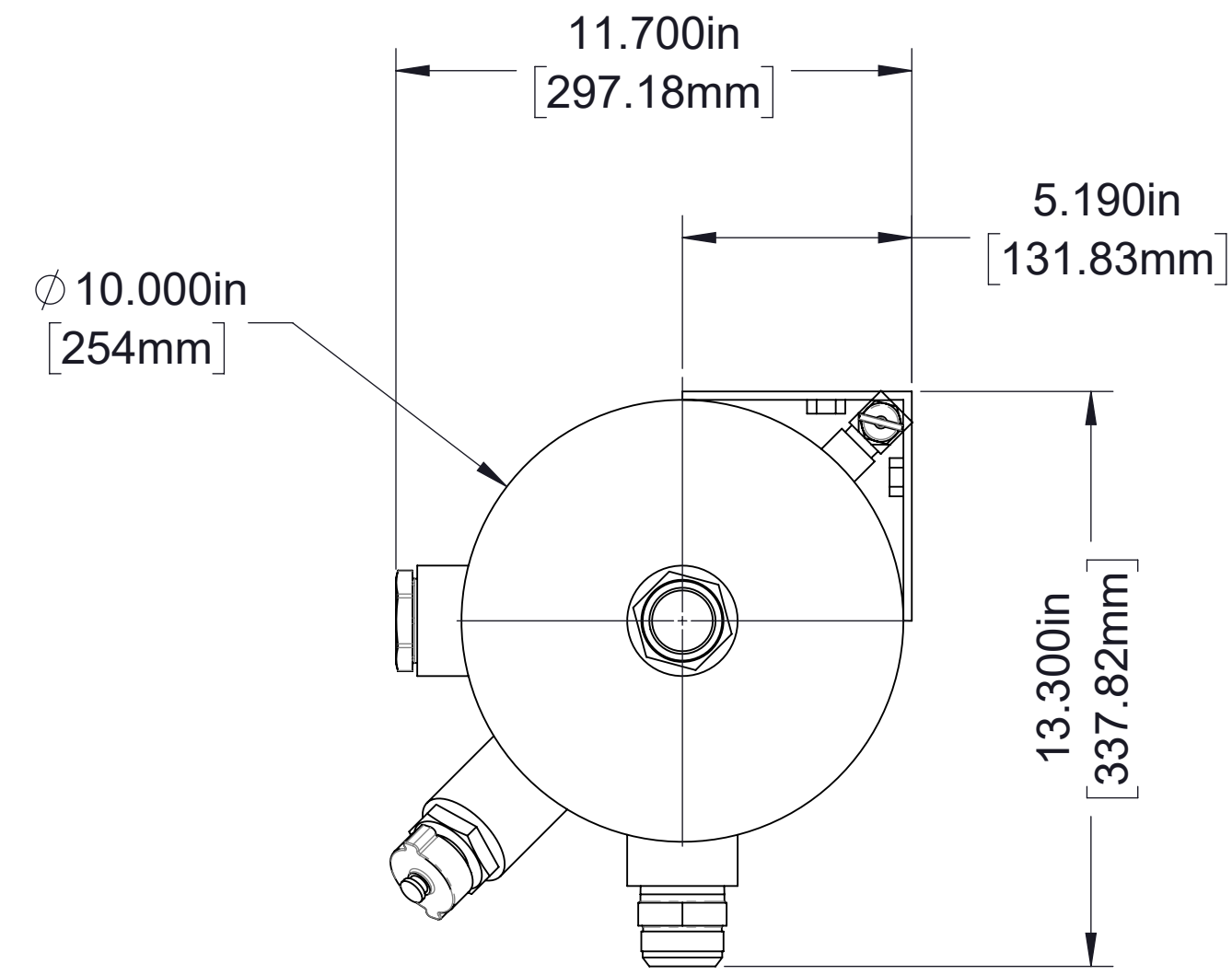


Auto Sync Panel

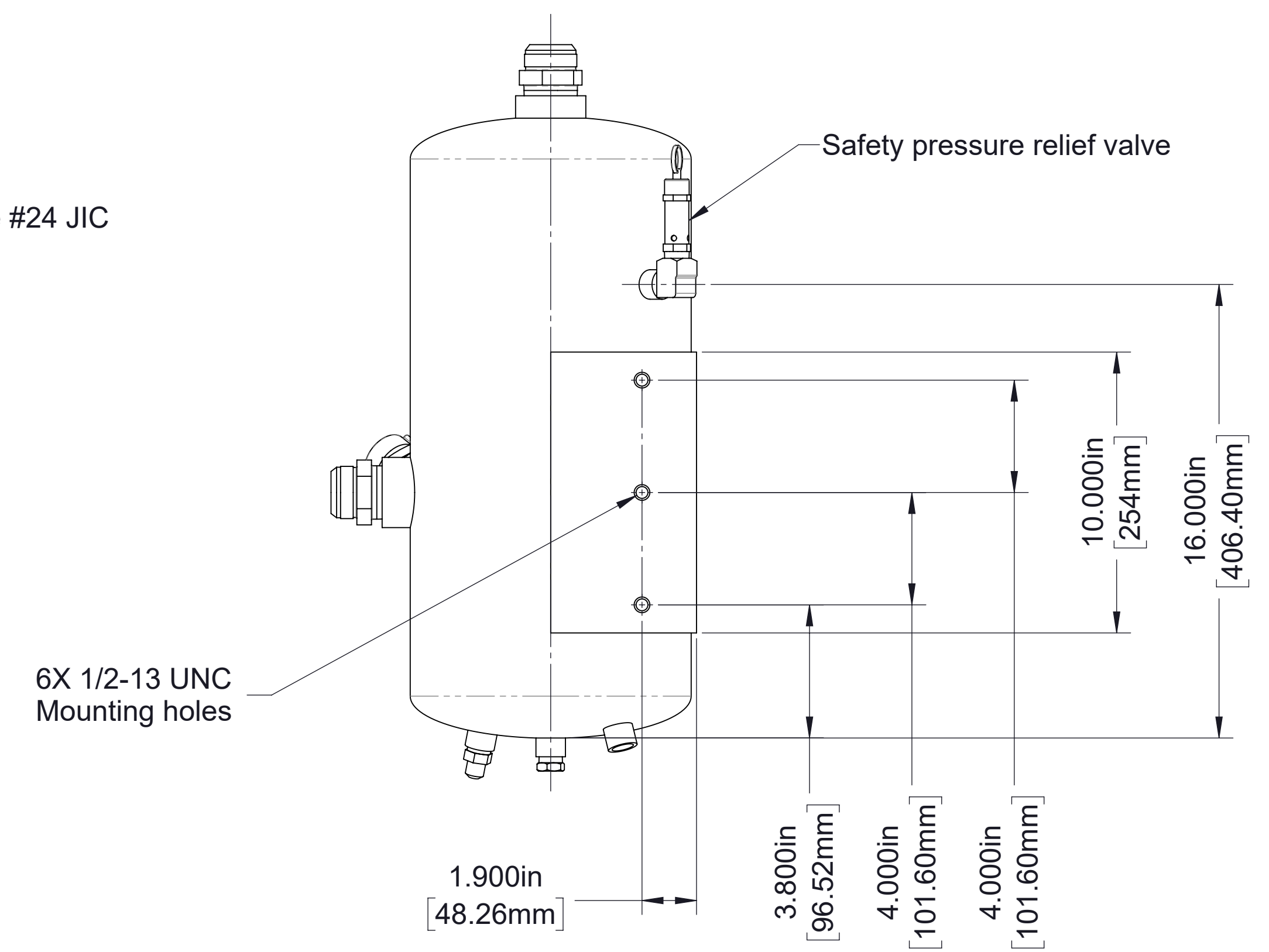


Panel Hole Layout





Must be mounted with the #24 JIC fitting facing up



Oil Sump

Notes:

1. See page 5 for plumbing of all oil, water and air lines.
2. Oil level in oil reservoir should be at lower elevation than compressor. If oil reservoir must be placed higher than compressor, contact Pneumax for additional parts that must be installed.

Compressor Components (Shipped Loose)