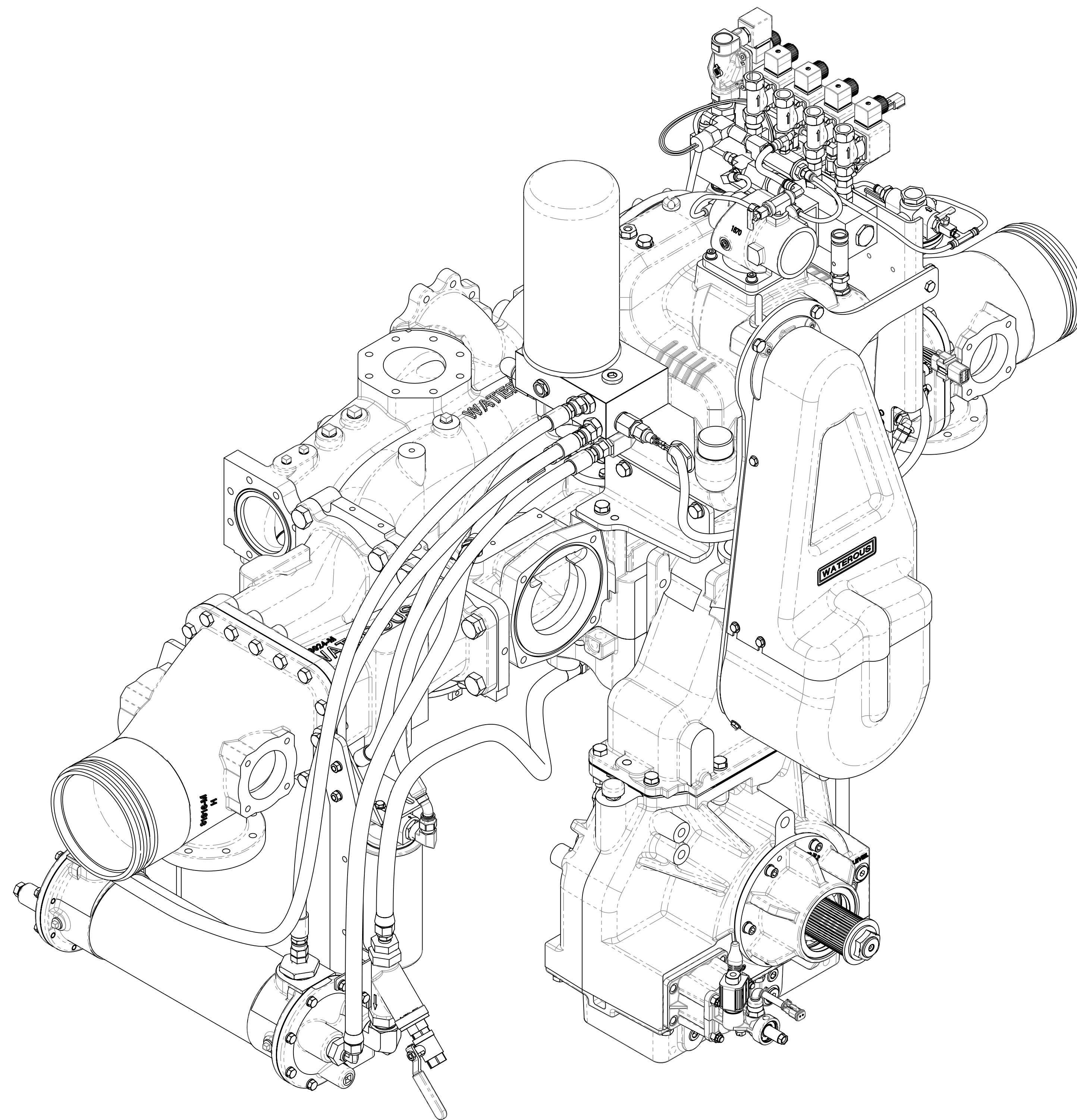
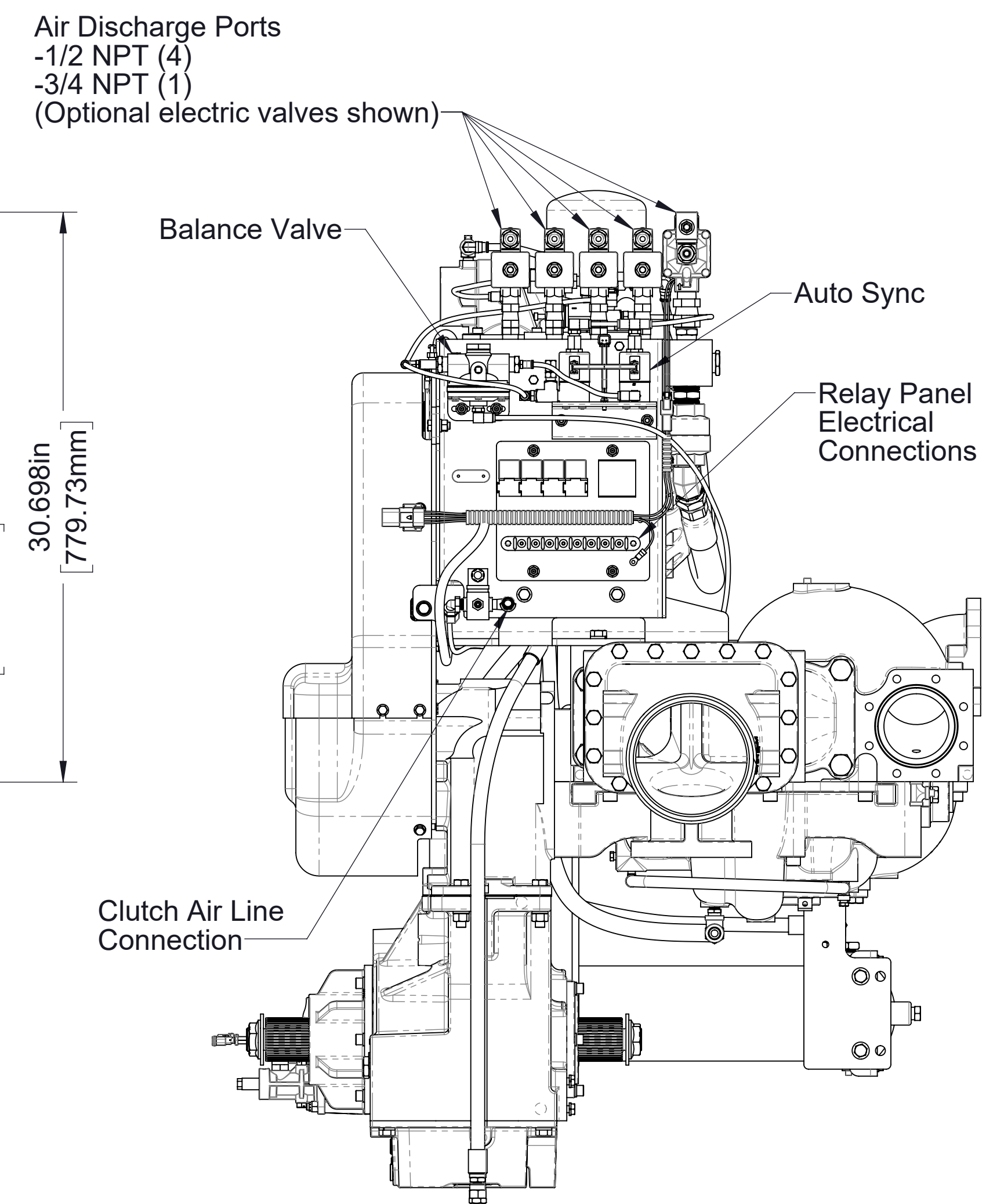
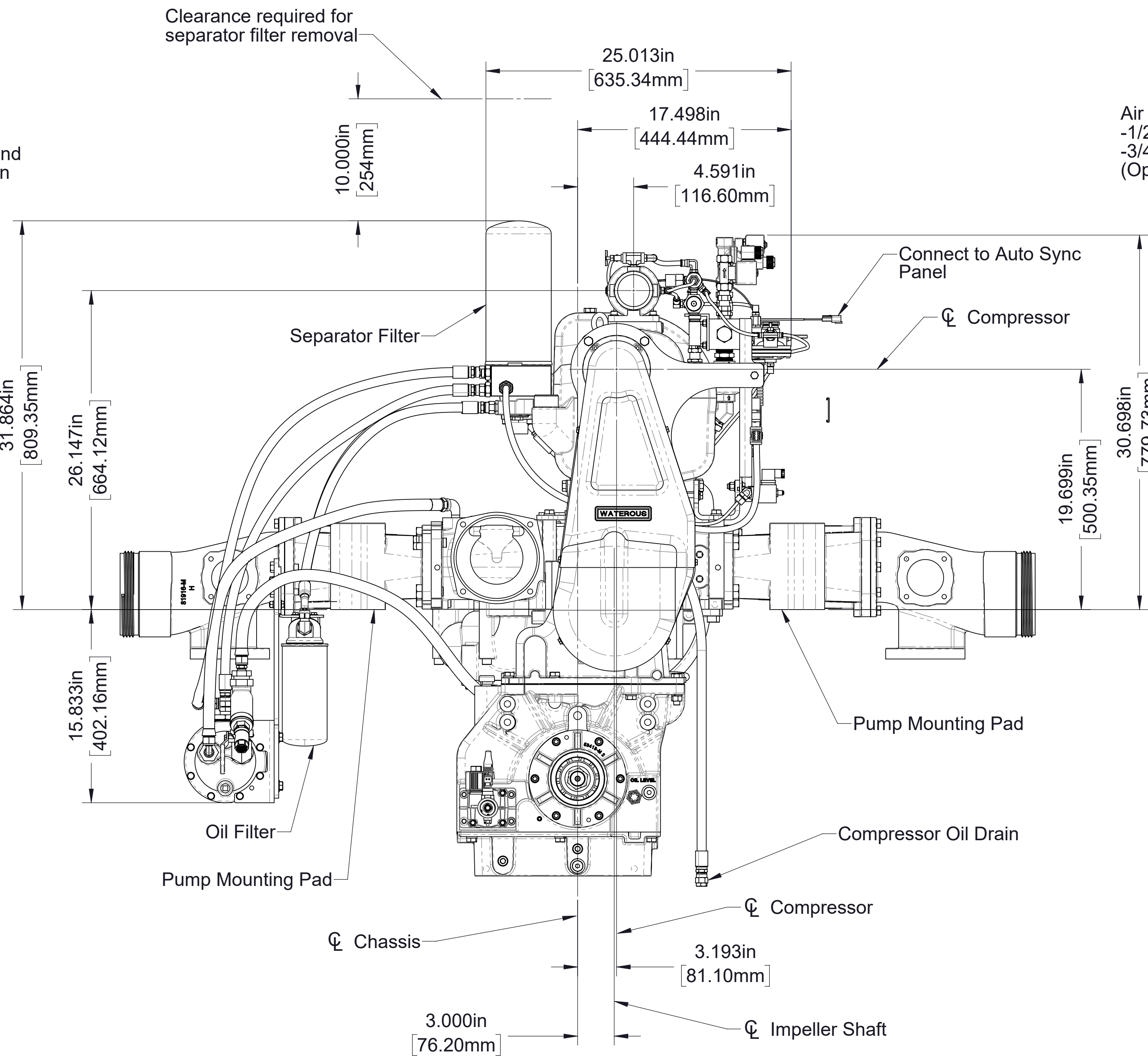
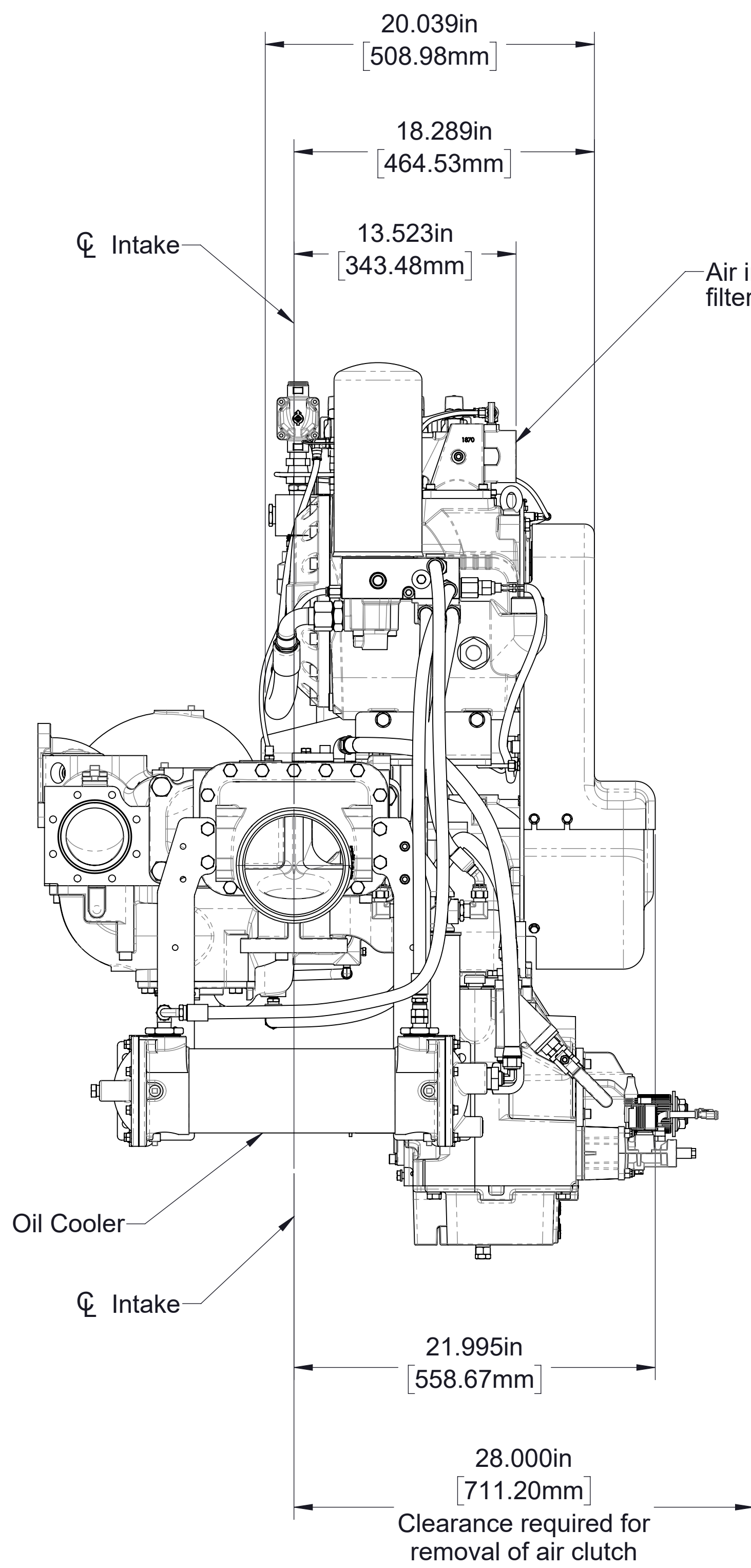
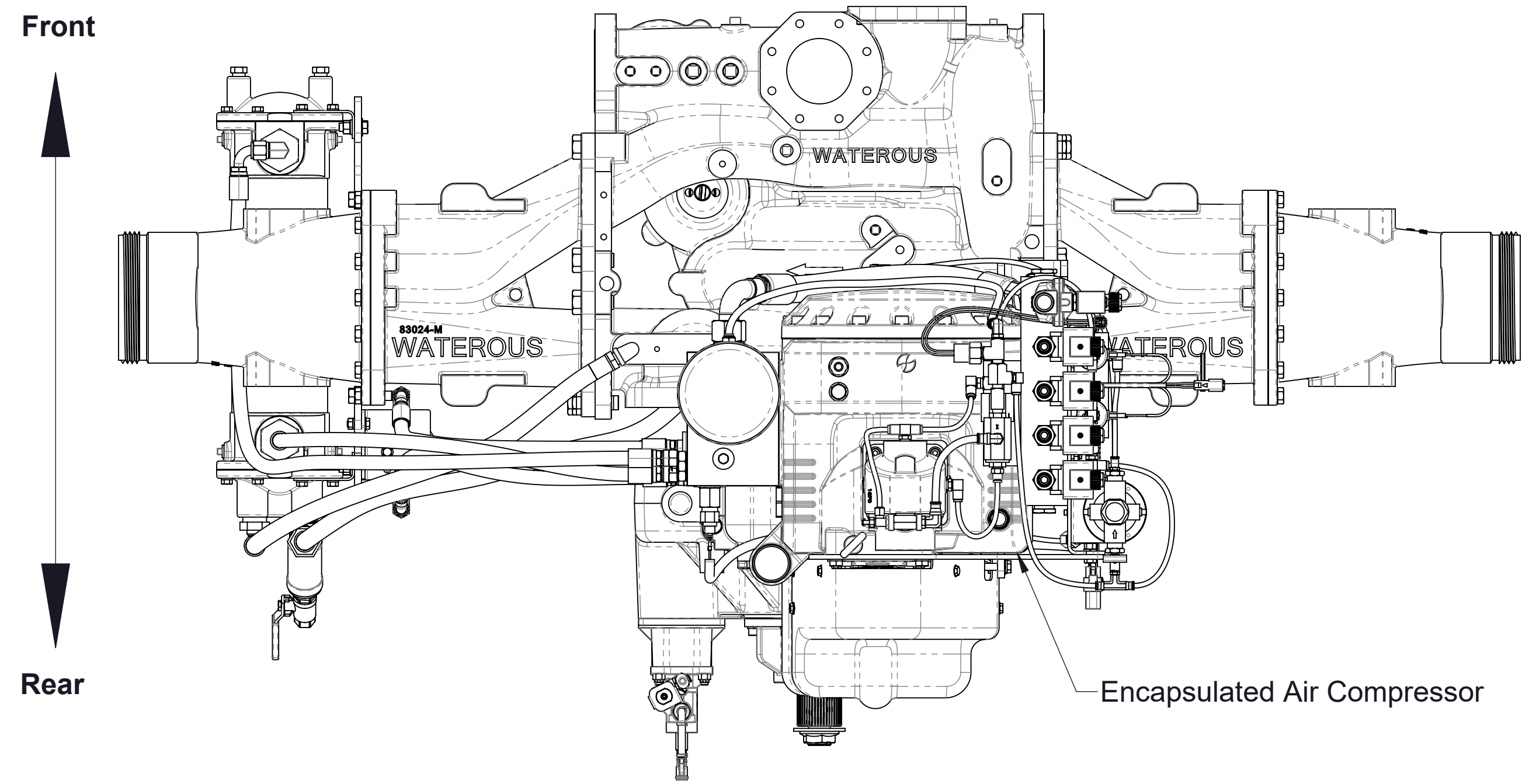


Eclipse™ CAF System

As used with CMU, CS, and CSU Pumps

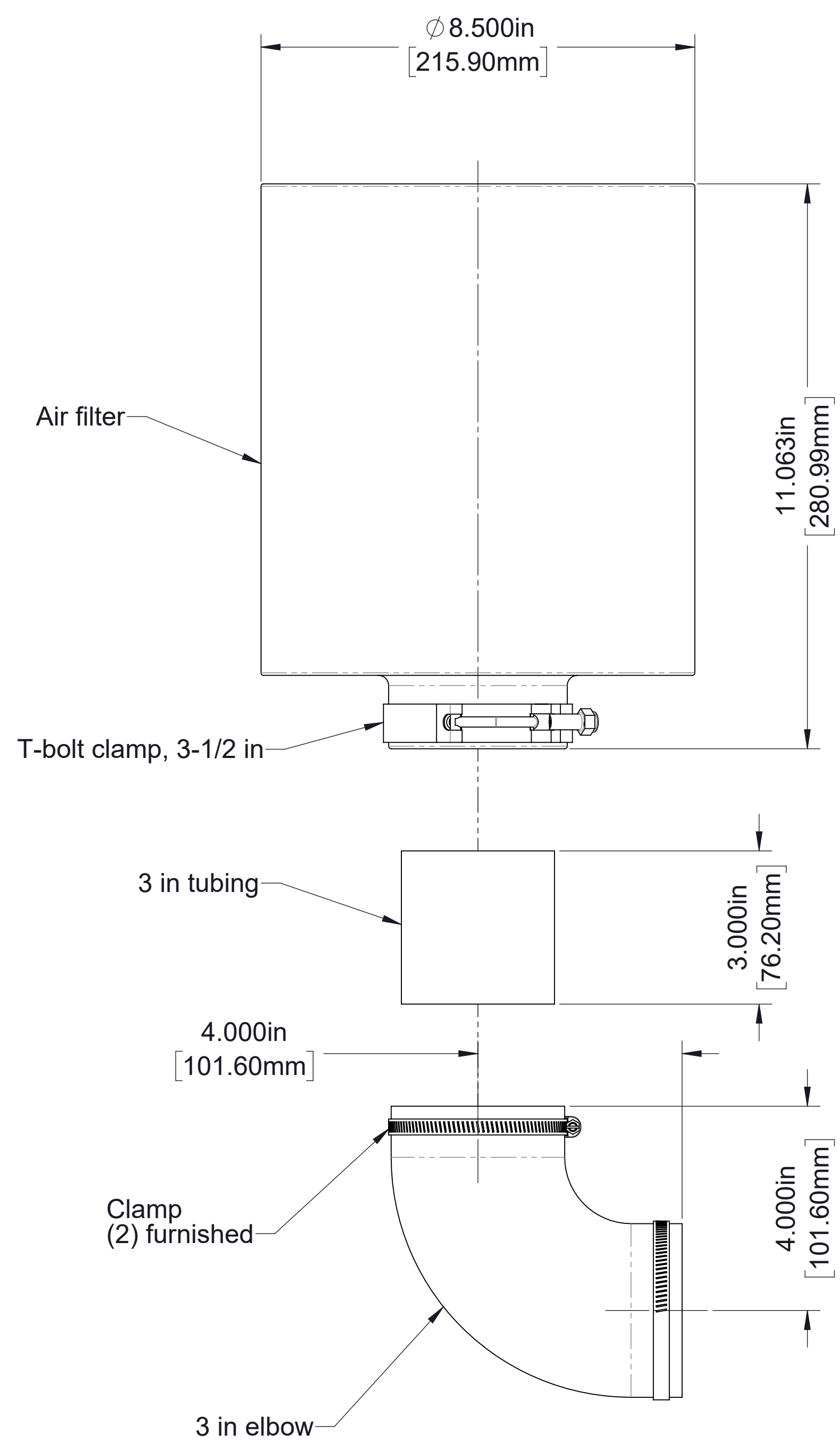


	Page
Standard Components Mounted on Pump:	
• Compressor (Encapsulated in Sump)	2
• Oil Cooler	
• Oil Filter	
• Separator Filter	
• Air Distribution Manifold and Valves	
• Auto-Sync	
Standard Components Shipped Loose:	
• Air Filter	3
• Oil Temperature Gauge	
• Panel Plates	4
• Auto-Sync (Panel Plate)	
Optional Components:	
• CAF Discharge:	
• Air Discharge Check Valve Kits	See DPL83477
• ICS Valves	See DPL83478
• Static Mixers	See DPL83603
• Foam Pump:	
• Aquis 1.5, 3.0, or 6.0	See F-1031-2447

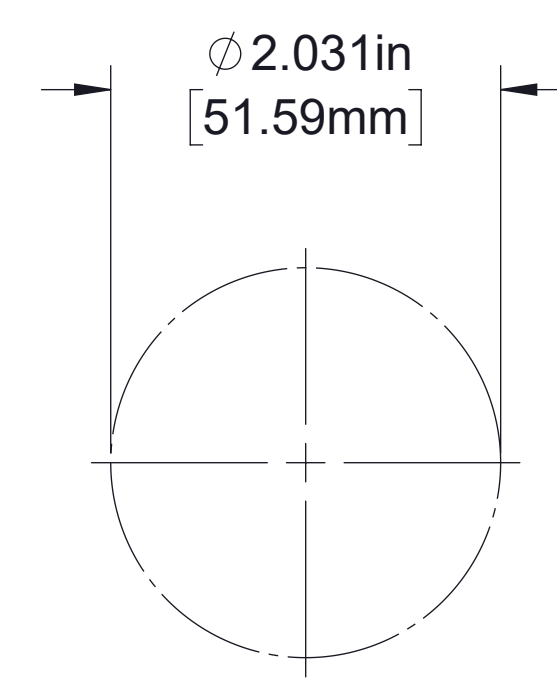


Notes:
 1. See drawing DPL83913 for CM series fire pump dimensional.
 2. See drawing DPL82791 for CS series fire pump dimensional.

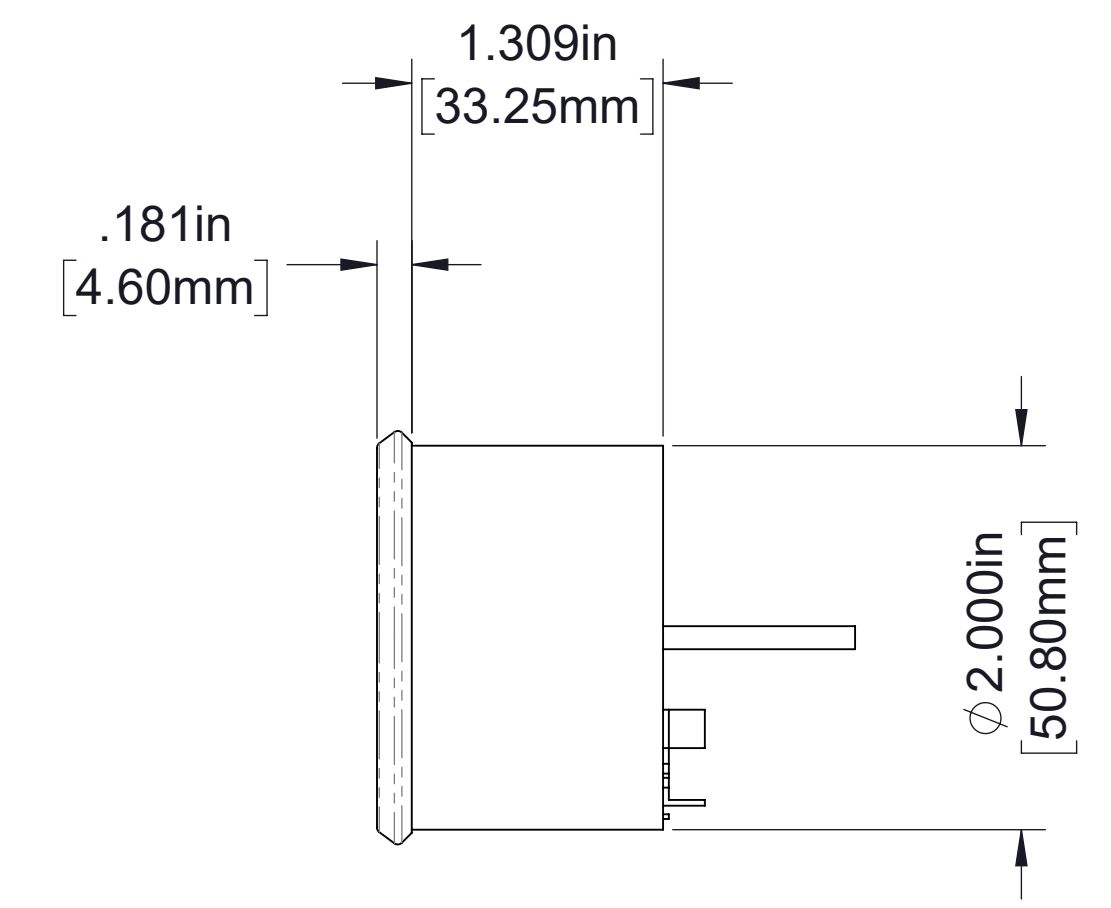
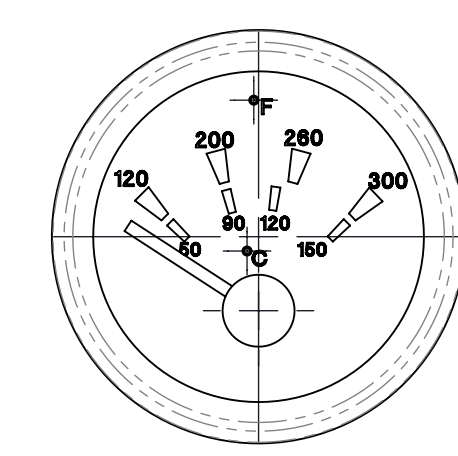
Eclipse Components Mounted on Pump



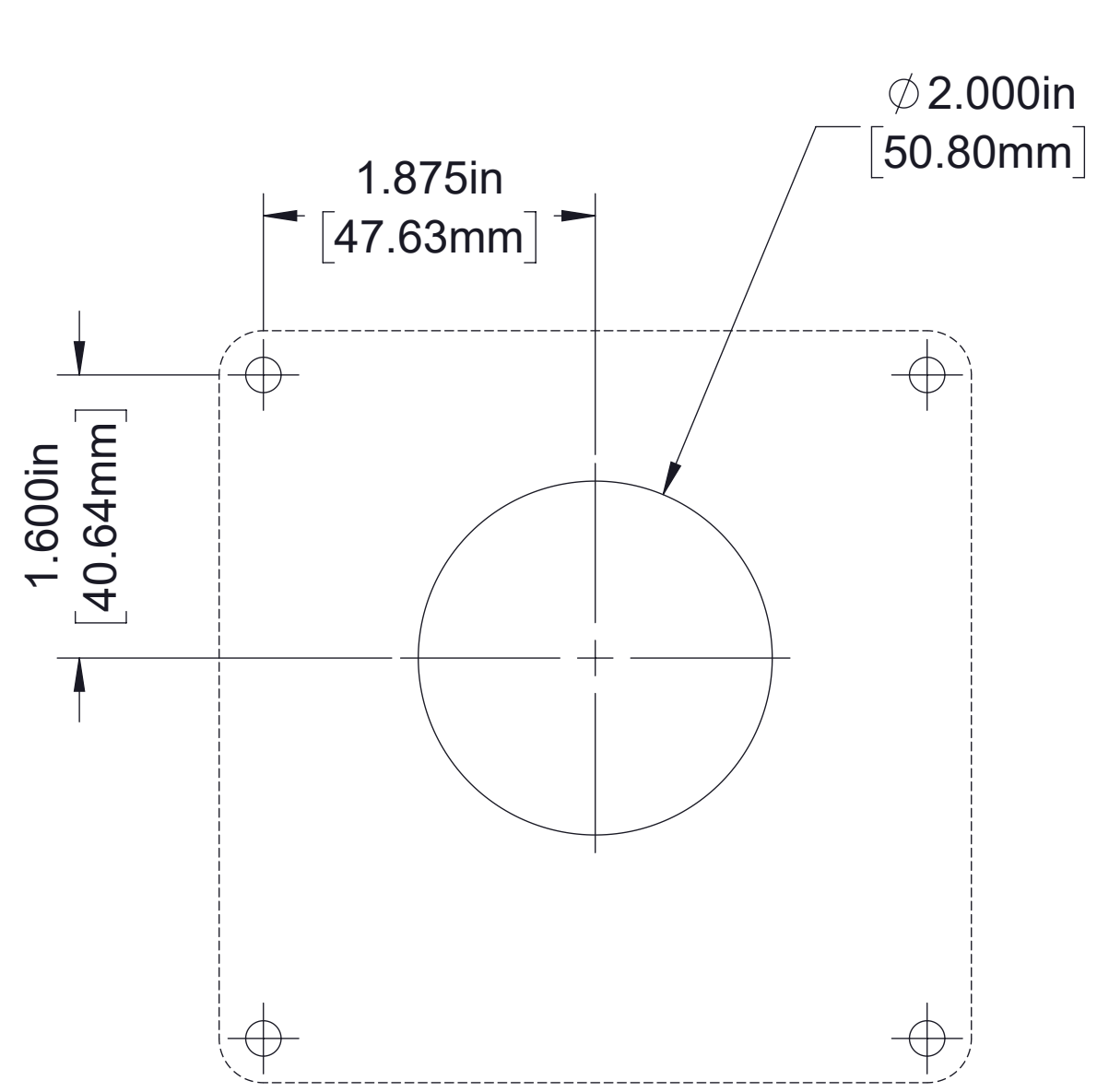
Air Filter



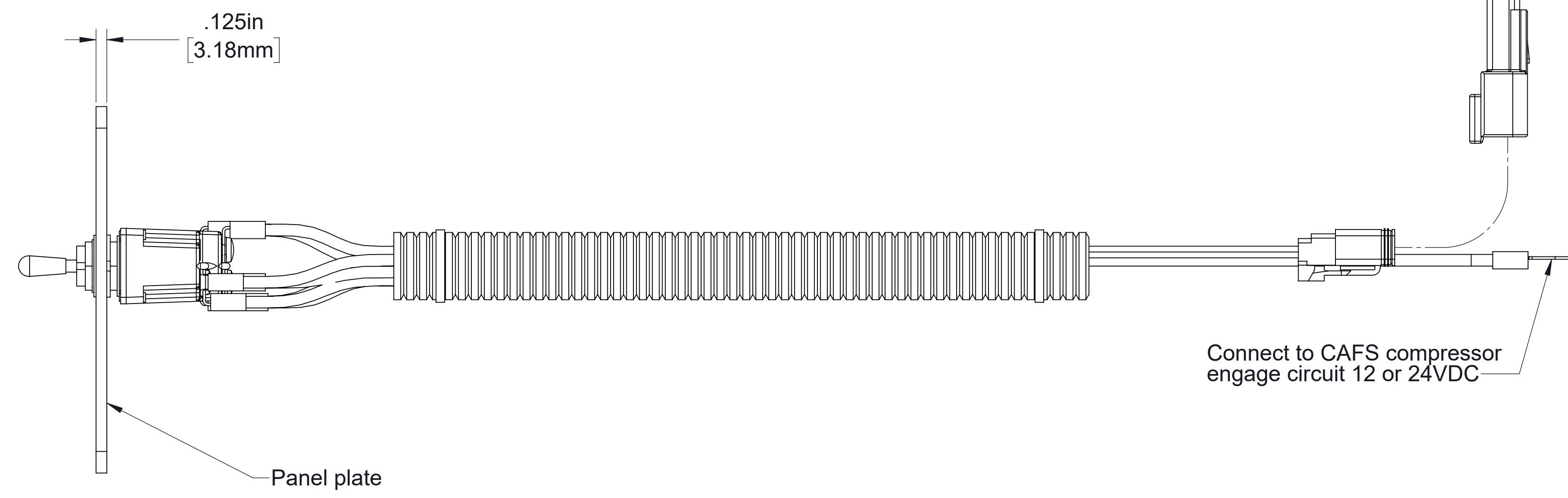
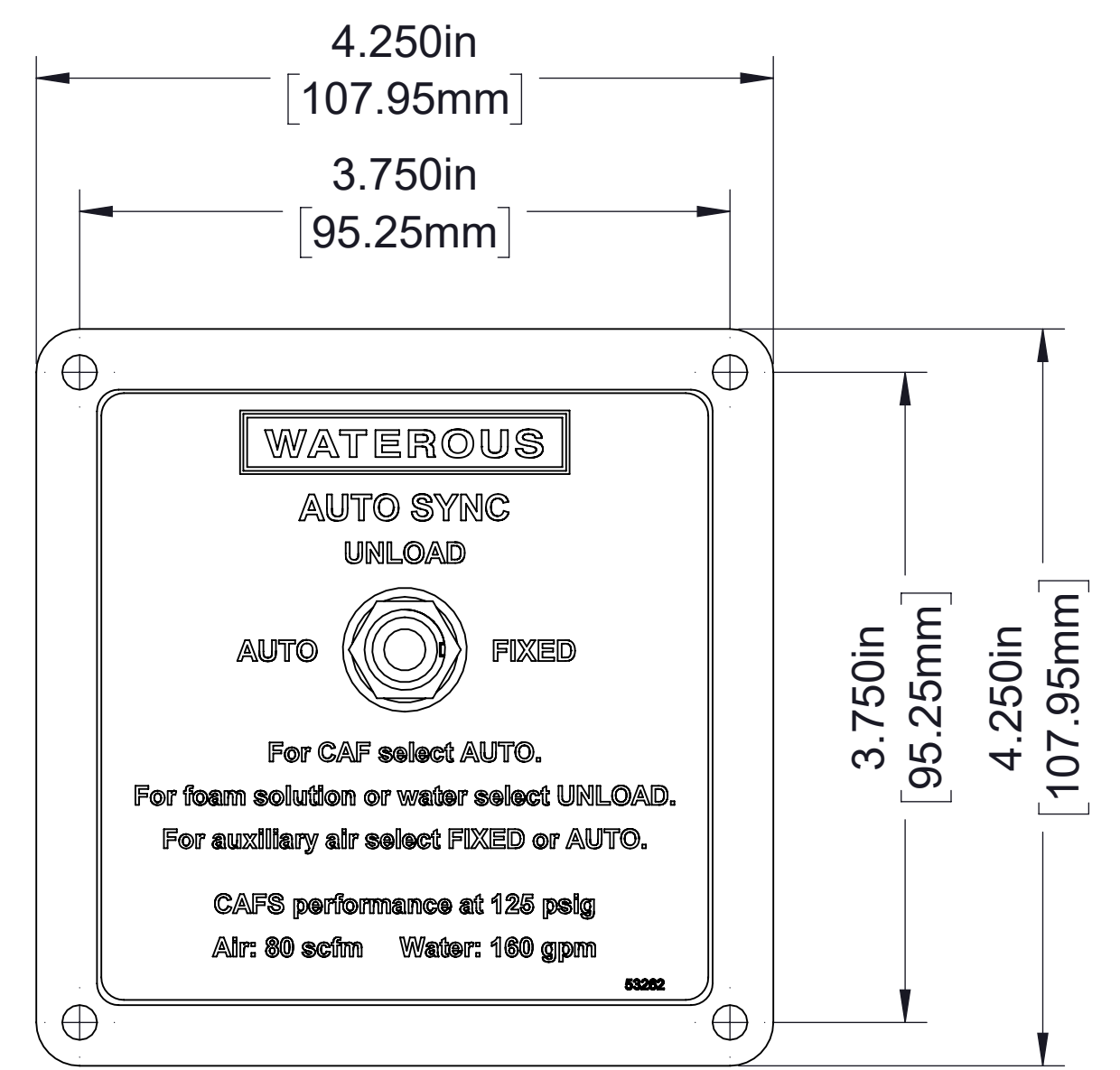
Panel Cut-Out



Oil Temperature Gauge
(Wiring to sump temperature sender not furnished by Waterous)

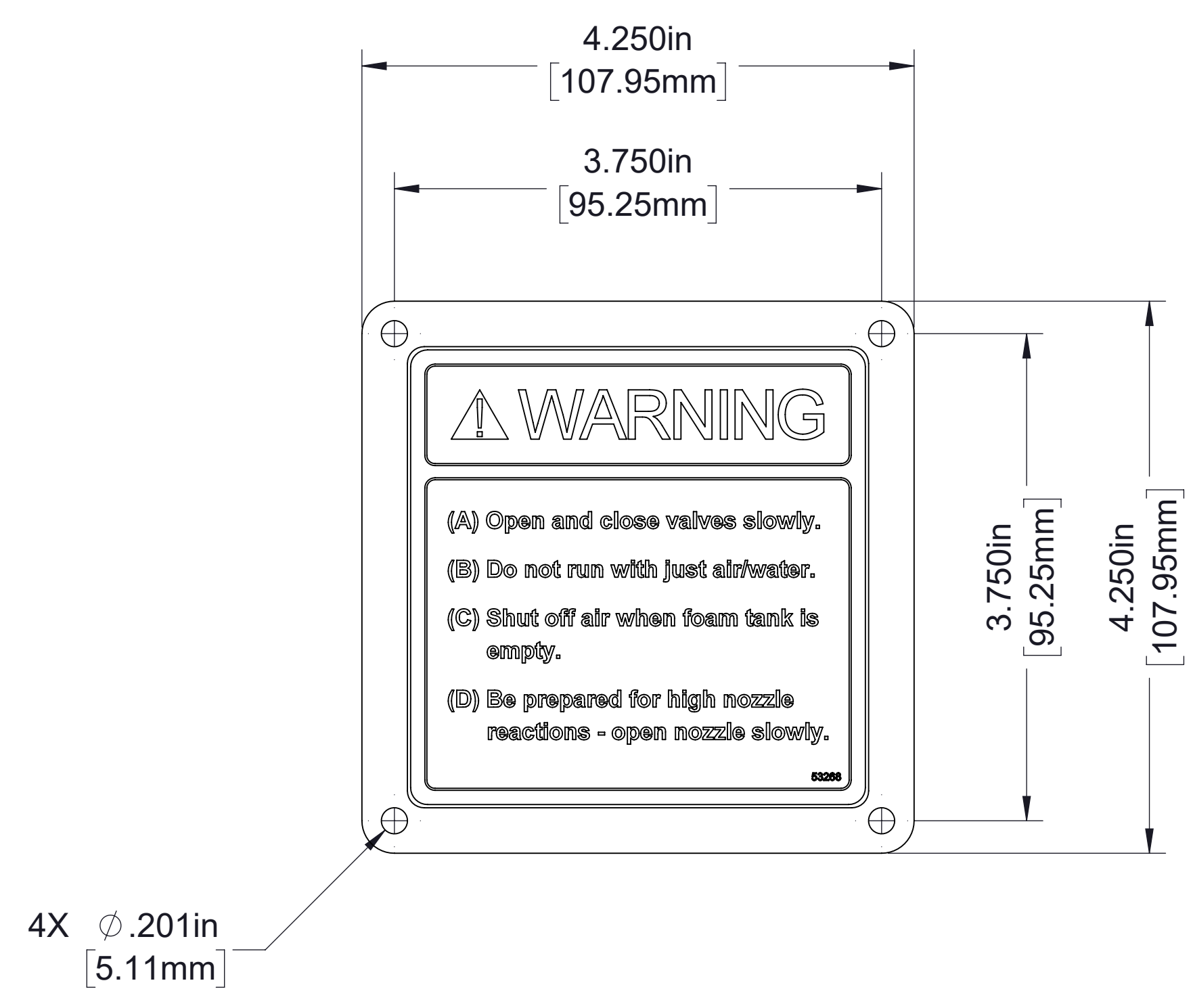


Panel Cut-Out

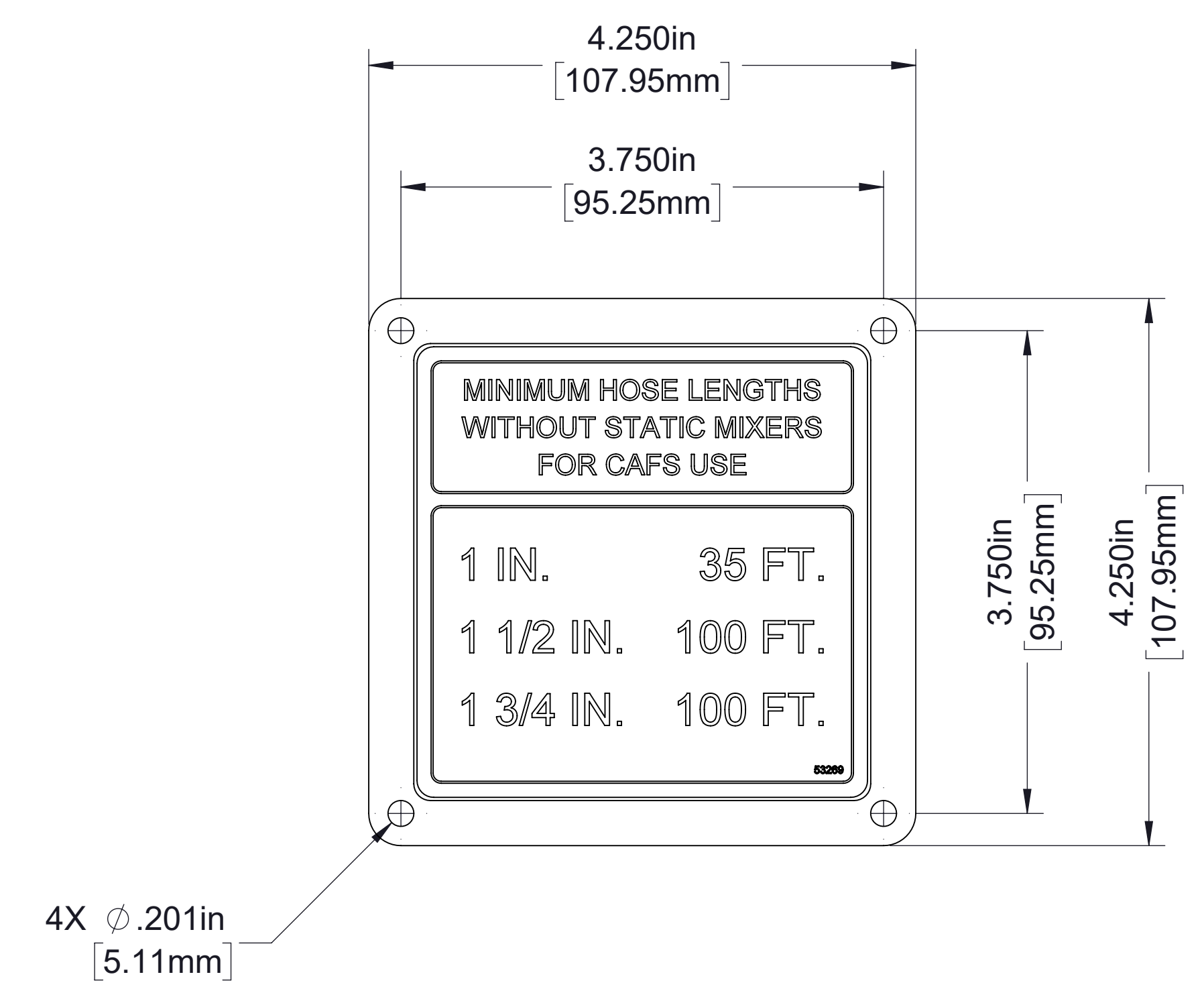


Panel plate

Auto-Sync



CAFS Warning



CAFS Hose Spec. Plate

Panel Plates