

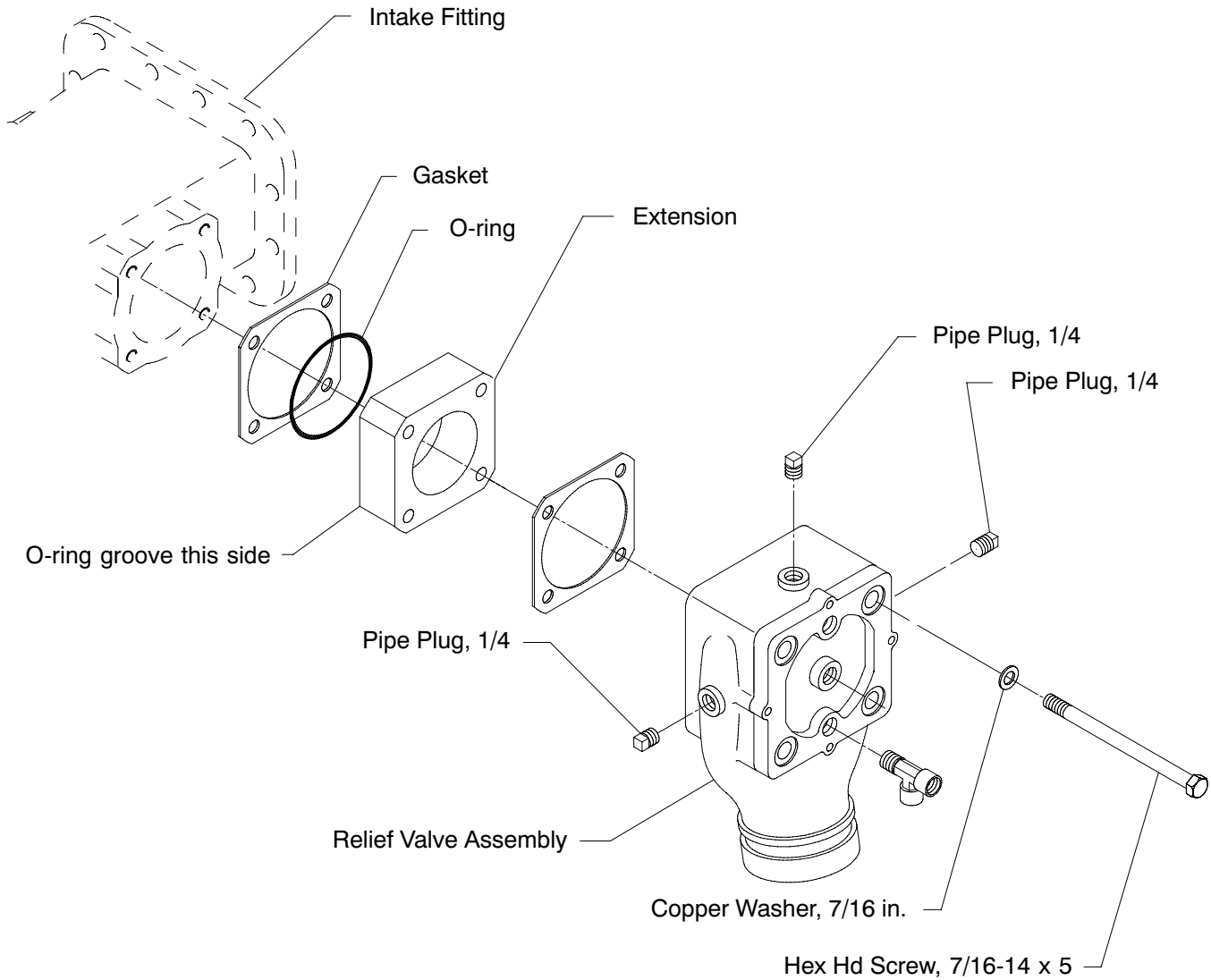
K 838**Repair Kit for Intake Relief Valve Main Valve**

This kit consists of the following parts:

Part Number	Description	Quantity
52529	Gasket	2
V 2763	Cover Gasket	1
V 2766	U-ring	1
V 2946	Gasket Seat	1
V 2947	O-ring	1
V 2953	X-ring	1
W 3752-4	O-ring	1
W 4207	Copper Washer, 7/16 in.	4
Y12005-16	Socket Head Screw, 5MM x 16MM	2

Disassembling Relief Valve from Intake Fitting

1. Remove the four hex head screws that attach the relief valve to the intake fitting.
2. Remove O-rings from extension and relief valve body and discard.
3. Remove the gaskets between the intake fitting and extension and relief valve body and extension and discard.



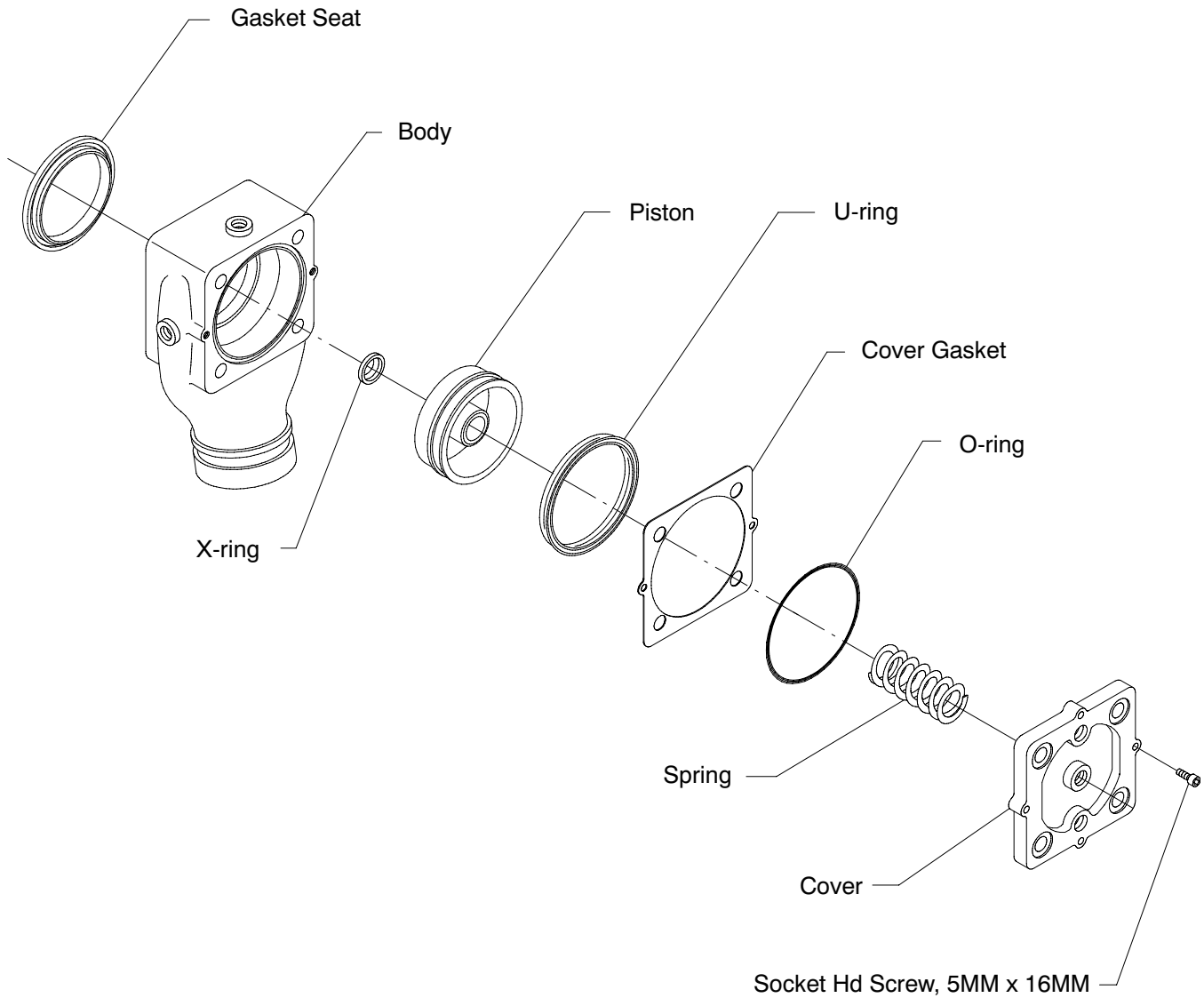
IL1549

Disassembling Relief Valve Body

1. Remove the two socket head screws that attach the cover to the body.
2. Remove piston assembly, gasket seat, U-ring, X-ring, O-ring and cover gasket and discard.

CAUTION

When the screws are removed, the spring will push the cover off the valve body.



IL1550

Reassembly

1. Install new gasket seat in relief valve body.
2. Assemble relief valve cover, spring and new piston assembly. Use a flat washer, screw and nut to compress the spring in the piston assembly until the cover is attached to the valve body.
3. Place new cover gasket and O-ring on relief valve body.
4. Attach the cover to the body using 5mm x 16mm socket head screws.
5. Remove the screw, washer and nut holding the piston assembly.
6. Reassemble the relief valve onto the intake fitting using the illustration on Page 2.

