

CP-1, CP-2, E301-A and E302-A Body and Impeller Shaft Assembly Service Parts List

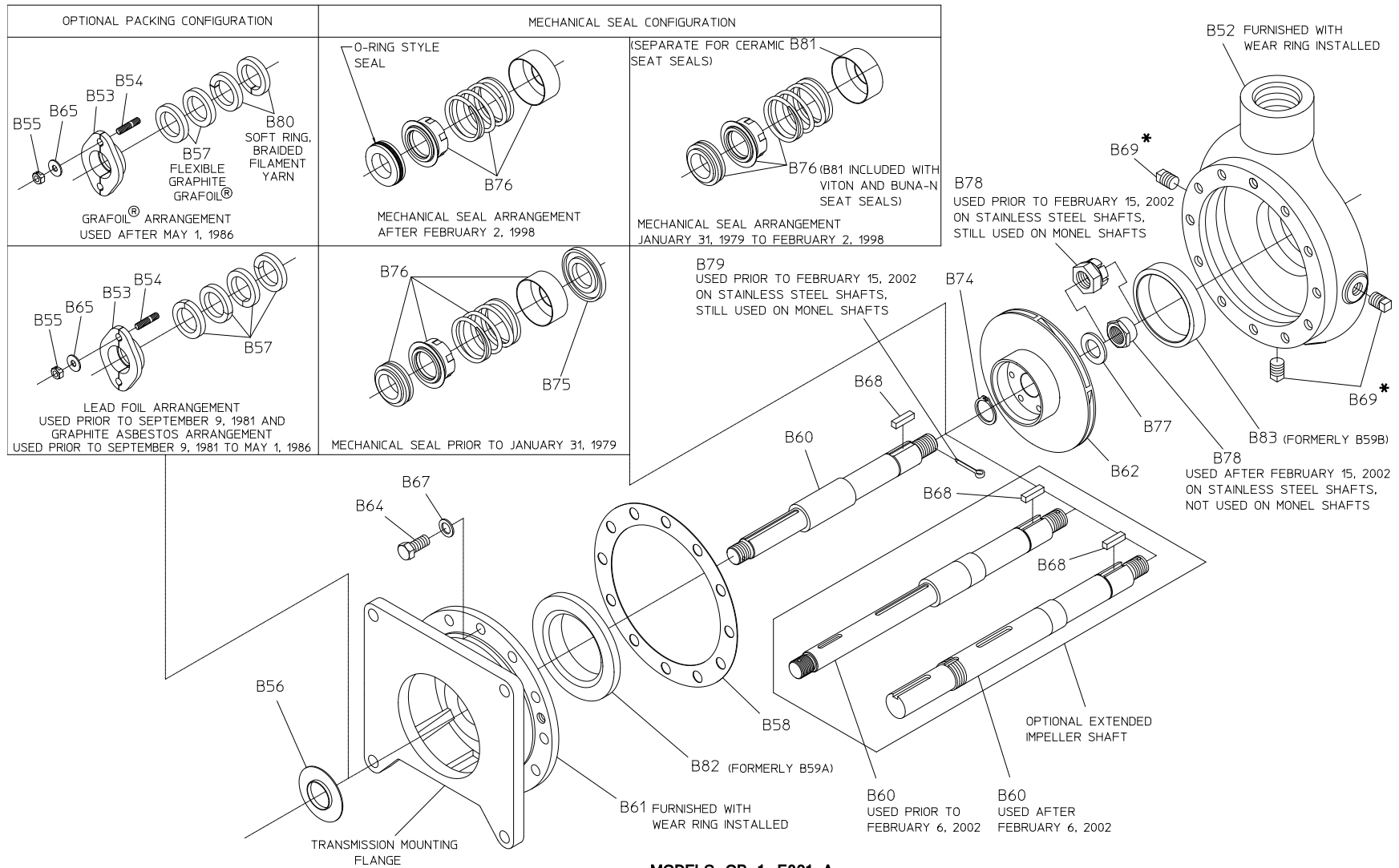
Index:

Model	Seal Type	See Page	
		Exploded View	Cross-Section View
CP-1, E301-A	Mechanical Seal	2, 3	4, 5
	Packing		
CP-2, E302-A	Mechanical Seal After August 23, 2017	6, 7	8, 9
	Mechanical Seal Prior to August 23, 2017	10, 11	12, 13
	Packing	14, 15	16,17

Models CP-1, E301-A Exploded View

REF. NO.	DESCRIPTION
B52	Volute Body (Furnished with Wear Ring B83)
B53	Packing Gland Half
B54	Gland Stud
B55	Unbalanced Packing Nut
B56	Flinger Ring
B57	Graphite, Grafoil™ or Lead Foil Packing Ring
B58	Volute Gasket
B59A	See B82
B59B	See B83
B60	Impeller Shaft
B61	Pump Head (Furnished with Wear Ring B82)
B62	Impeller
B64	Cap Screw, 7/16-14 x 1 in. (For Cast Iron Bodies) or Cap Screw, Self-Locking (Nylok), SS, 7/16/14 x 1 in., (For Bronze Bodies)
B65	Plain Brass Washer

REF. NO.	DESCRIPTION
B67	Plain Copper Washer, 7/16 in.
B68	Square Key, SS, 1/4 x 1 in.
B69	Square Head Pipe Plug, 3/8 in.
B74	Snap Ring
B75	Spring Holder (Used with Mechanical Seal Furnished Prior to January 31, 1979)
B76	Mechanical Seal
B77	Shaft Nut Washer
B78	Locknut (Stainless Steel Shafts)
B78	Castellated Nut, SS 3/4-16 (Monel Shafts)
B79	Cotter Pin, SS, 1/8 x 1 in. (Monel Shafts)
B80	Soft Packing Ring
B81	Spring Sleeve
B82	Rear Wear Ring, Standard, 0.025, 0.050, 0.075 in. U/S (Formerly B59A)
B83	Wear Ring, Standard, 0.025, 0.050, 0.075 in. U/S (Formerly B59B)



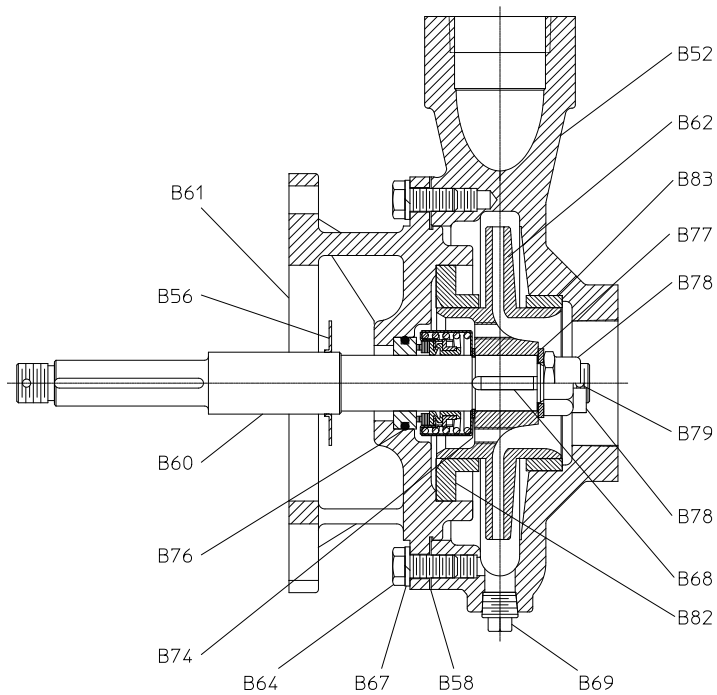
* NOTE: ONE OF THESE TAPS USED FOR PUMP DRAIN.

MODELS CP-1, E301-A
EXPLODED VIEW

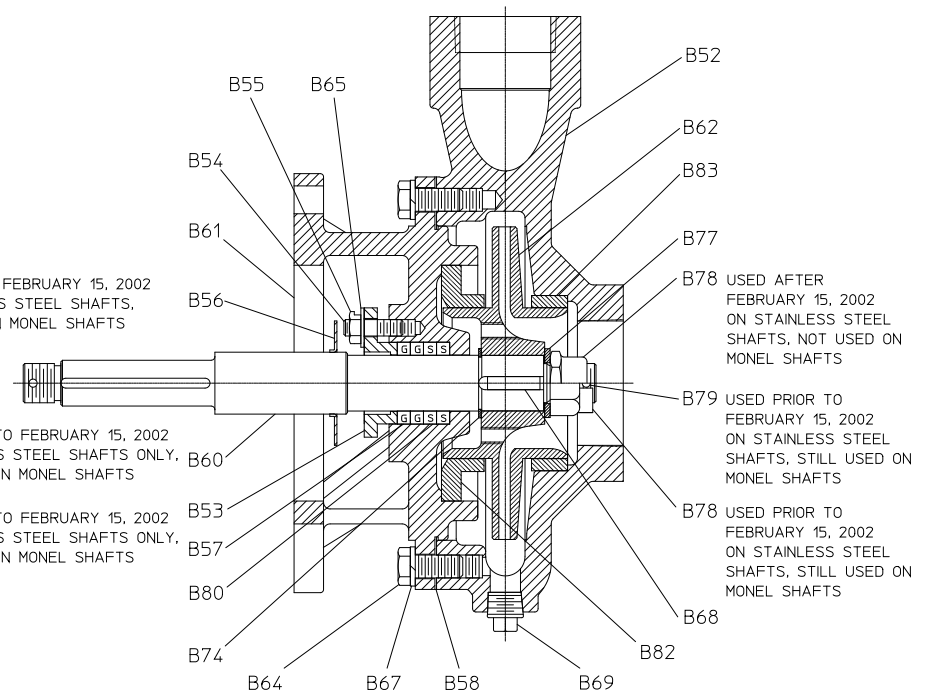
Models CP-1, E301-A Cross-Section View

REF. NO.	DESCRIPTION
B52	Volute Body (Furnished with Wear Ring B83)
B53	Packing Gland Half
B54	Gland Stud
B55	Unbalanced Packing Nut
B56	Flinger Ring
B57	Graphite, Grafoil™ or Lead Foil Packing Ring
B58	Volute Gasket
B60	Impeller Shaft
B61	Pump Head (Furnished with Wear Ring B82)
B62	Impeller
B64	Cap Screw, 7/16-14 x 1 in. (For Cast Iron Bodies) or
	Cap Screw, Self-Locking (Nylok), SS, 7/16/14 x 1 in., (For Bronze Bodies)
B65	Plain Brass Washer

REF. NO.	DESCRIPTION
B67	Plain Copper Washer, 7/16 in.
B68	Square Key, SS, 1/4 x 1 in.
B69	Square Head Pipe Plug, 3/8 in.
B74	Snap Ring
B76	Mechanical Seal
B77	Shaft Nut Washer
B78	Locknut (Stainless Steel Shafts)
B78	Castellated Nut, SS 3/4-16 (Monel Shafts)
B79	Cotter Pin, SS, 1/8 x 1 in. (Monel Shafts)
B80	Soft Packing Ring
B82	Rear Wear Ring, Standard, 0.025, 0.050, 0.075 in. U/S (Formerly B59A)
B83	Wear Ring, Standard, 0.025, 0.050, 0.075 in. U/S (Formerly B59B)



MODELS CP-1, E301-A WITH MECHANICAL SEAL



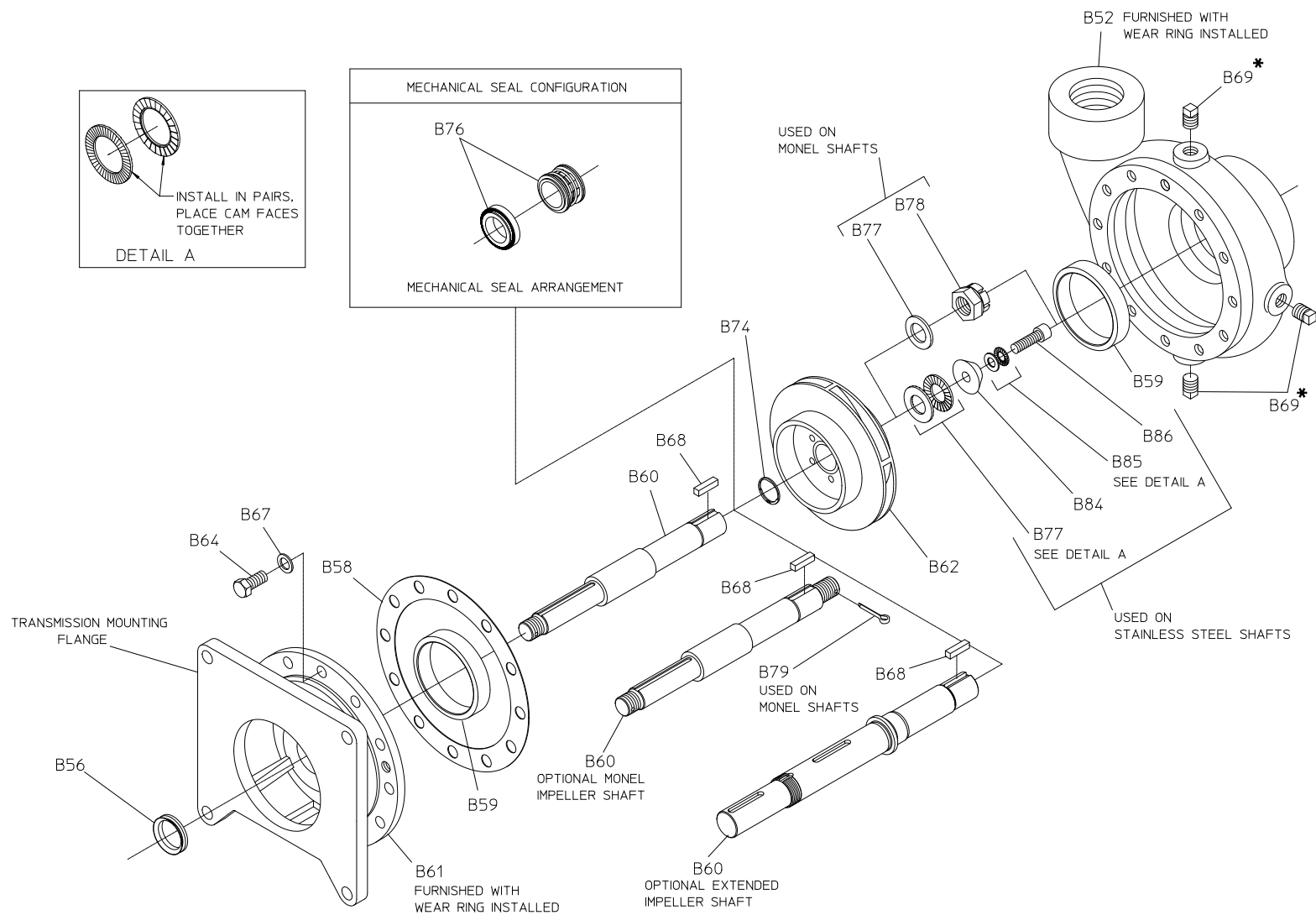
MODELS CP-1, E301-A WITH PACKING

CROSS-SECTION VIEW

Models CP-2, E302-A with Mechanical Seal Exploded View After August 23, 2017

REF. NO.	DESCRIPTION
B52	Volute Body (Furnished with Wear Ring B59)
B56	Flinger Ring
B58	Volute Gasket
B59	Wear Ring, Standard, 0.025, 0.050, 0.075 in. U/S
B60	Impeller Shaft
B61	Pump Head (Furnished with Wear Ring B59)
B62	Impeller
B64	Cap Screw, 7/16-14 x 1 in. (For Cast Iron Bodies) or
	Cap Screw, Self-Locking (Nylok), SS, 7/16/14 x 1 in., (For Bronze Bodies)

REF. NO.	DESCRIPTION
B67	Plain Copper Washer, 7/16 in. (Prior to 5/2/23)
B67	Lock Washer, 7/16 in. (After April 5/2/23)
B68	Square Key, SS, 1/4 x 1 in.
B69	Square Head Pipe Plug, 3/8 in.
B74	Snap Ring
B76	Mechanical Seal
B77	Shaft Nut Washer
B78	Locknut (Stainless Steel Shafts)
B78	Castellated Nut, SS 3/4-16 (Monel Shafts)
B79	Cotter Pin, SS, 1/8 x 1 in. (Monel Shafts)
B84	Impeller Washer
B85	Nord-Lock Washer, 3/8
B86	Skt Hd Screw, 3/8 x 1-1/4



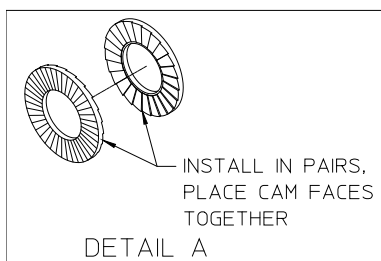
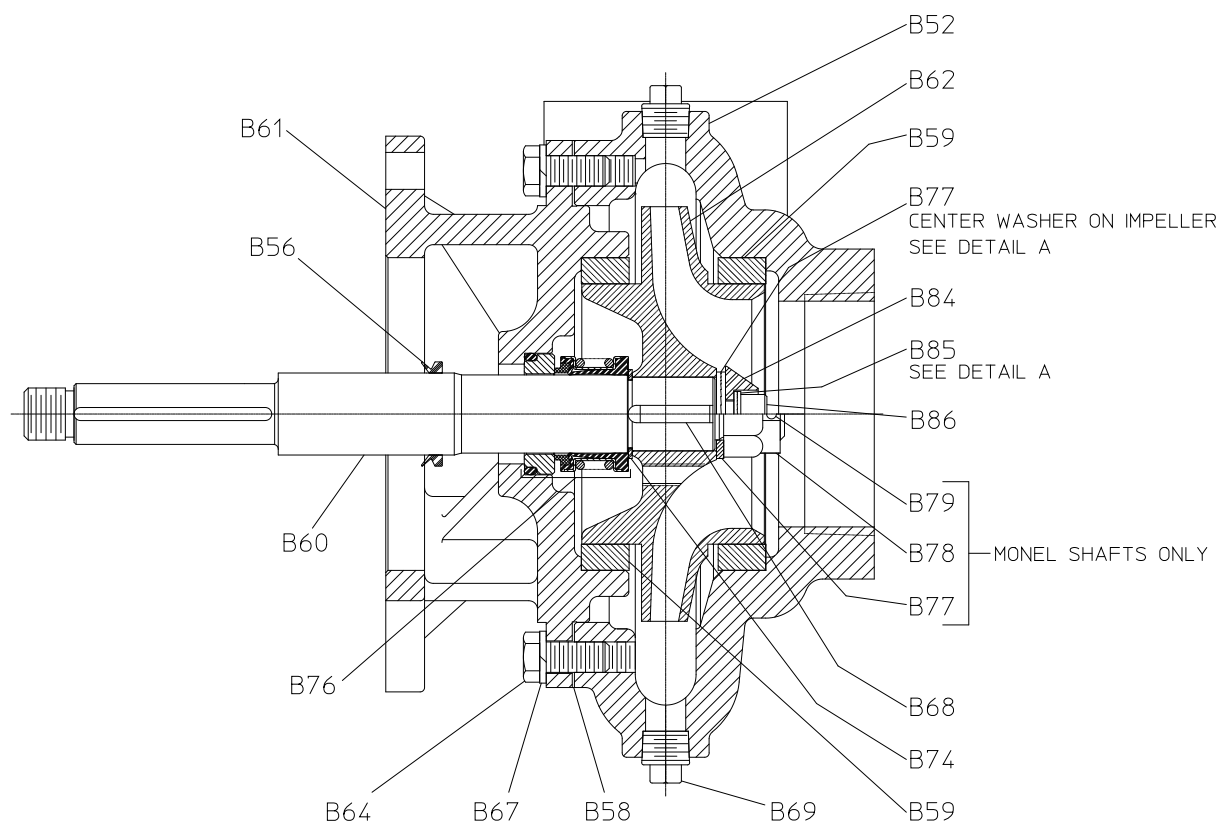
* NOTE: ONE OF THESE TAPS USED FOR PUMP DRAIN.

MODELS CP-2, E302-A WITH MECHANICAL SEAL
EXPLODED VIEW - AFTER AUGUST 23, 2017

Models CP-2, E302-A with Mechanical Seal Cross-Section View After August 23, 2017

REF. NO.	DESCRIPTION
B52	Volute Body (Furnished with Wear Ring B59)
B56	Flinger Ring
B58	Volute Gasket
B60	Impeller Shaft
B61	Pump Head (Furnished with Wear Ring B59)
B62	Impeller
B64	Cap Screw, 7/16-14 x 1 in. (For Cast Iron Bodies) or
	Cap Screw, Self-Locking (Nylok), SS, 7/16/14 x 1 in., (For Bronze Bodies)

REF. NO.	DESCRIPTION
B67	Plain Copper Washer, 7/16 in. (Prior to 5/2/23)
B67	Lock Washer, 7/16 in. (After April 5/2/23)
B68	Square Key, SS, 1/4 x 1 in.
B69	Square Head Pipe Plug, 3/8 in.
B74	Snap Ring
B76	Mechanical Seal
B77	Shaft Nut Washer
B78	Locknut (Stainless Steel Shafts)
B78	Castellated Nut, SS 3/4-16 (Monel Shafts)
B79	Cotter Pin, SS, 1/8 x 1 in. (Monel Shafts)

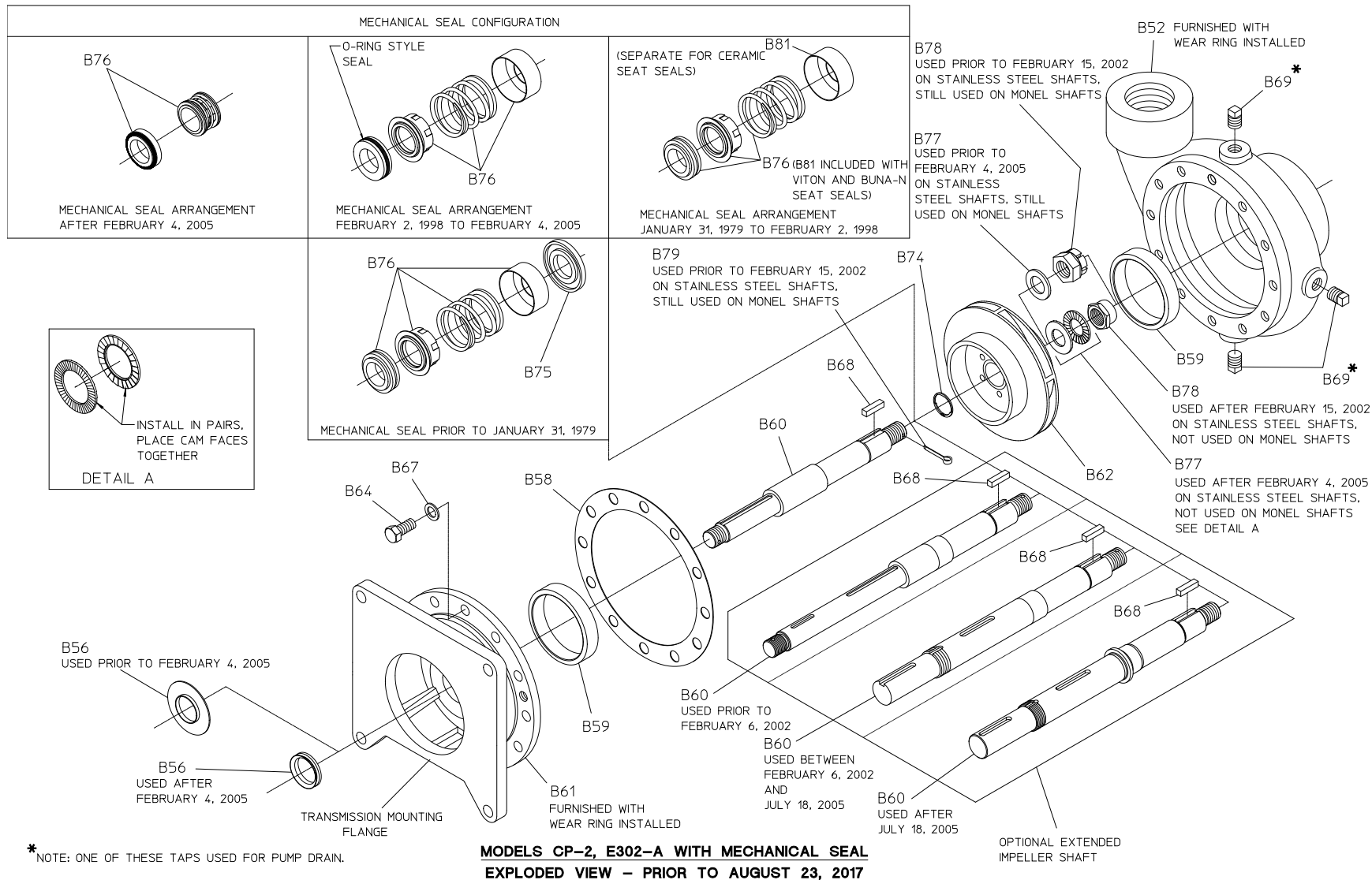


MODELS CP-2, E302-A WITH MECHANICAL SEAL
CROSS-SECTION VIEW - AFTER AUGUST 23, 2017

Models CP-2, E302-A with Mechanical Seal Exploded View Prior August 23, 2017

REF. NO.	DESCRIPTION
B52	Volute Body (Furnished with Wear Ring B59)
B56	Flinger Ring
B58	Volute Gasket
B59	Wear Ring, Standard, 0.025, 0.050, 0.075 in. U/S
B60	Impeller Shaft
B61	Pump Head (Furnished with Wear Ring B59)
B62	Impeller
B64	Cap Screw, 7/16-14 x 1 in. (For Cast Iron Bodies) or
	Cap Screw, Self-Locking (Nylok), SS, 7/16/14 x 1 in., (For Bronze Bodies)

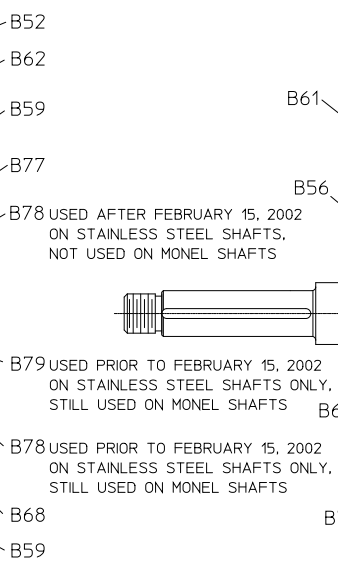
REF. NO.	DESCRIPTION
B67	Plain Copper Washer, 7/16 in.
B68	Square Key, SS, 1/4 x 1 in.
B69	Square Head Pipe Plug, 3/8 in.
B74	Snap Ring
B75	Spring Holder (Used with Mechanical Seal Furnished Prior to January 31, 1979)
B76	Mechanical Seal
B77	Shaft Nut Washer
B78	Locknut (Stainless Steel Shafts)
B78	Castellated Nut, SS 3/4-16 (Monel Shafts)
B79	Cotter Pin, SS, 1/8 x 1 in. (Monel Shafts)
B81	Spring Sleeve



**Models CP-2, E302-A with Mechanical Seal
Cross-Section View Prior to August 23, 2017**

REF. NO.	DESCRIPTION
B52	Volute Body (Furnished with Wear Ring B59)
B56	Flinger Ring
B58	Volute Gasket
B60	Impeller Shaft
B61	Pump Head (Furnished with Wear Ring B59)
B62	Impeller
B64	Cap Screw, 7/16-14 x 1 in. (For Cast Iron Bodies) or
	Cap Screw, Self-Locking (Nylok), SS, 7/16/14 x 1 in., (For Bronze Bodies)

REF. NO.	DESCRIPTION
B67	Plain Copper Washer, 7/16 in.
B68	Square Key, SS, 1/4 x 1 in.
B69	Square Head Pipe Plug, 3/8 in.
B74	Snap Ring
B76	Mechanical Seal
B77	Shaft Nut Washer
B78	Locknut (Stainless Steel Shafts)
B78	Castellated Nut, SS 3/4-16 (Monel Shafts)
B79	Cotter Pin, SS, 1/8 x 1 in. (Monel Shafts)



AFTER FEBRUARY 15, 2002
 INLESS STEEL SHAFTS.
 ED ON MONEL SHAFTS

PRIOR TO FEBRUARY 15, 2002
 INLESS STEEL SHAFTS ONLY.
 SED ON MONEL SHAFTS

PRIOR TO FEBRUARY 15, 2002
 INLESS STEEL SHAFTS ONLY.
 SED ON MONEL SHAFTS

B52
 B62
 B59
 B77
 STAINLESS STEEL SHAFTS ONLY.
 NOT USED ON MONEL SHAFTS.
 SEE DETAIL A
 B78
 STAINLESS STEEL
 SHAFTS ONLY
 B79
 MONEL SHAFTS ONLY
 B78
 MONEL SHAFTS ONLY
 B77
 MONEL SHAFTS ONLY
 B68
 B74
 B59
 B69
 B58
 B67
 B64
 B76
 B60
 B56
 B61

INSTALL IN PAIRS.
PLACE CAM FACES
TOGETHER

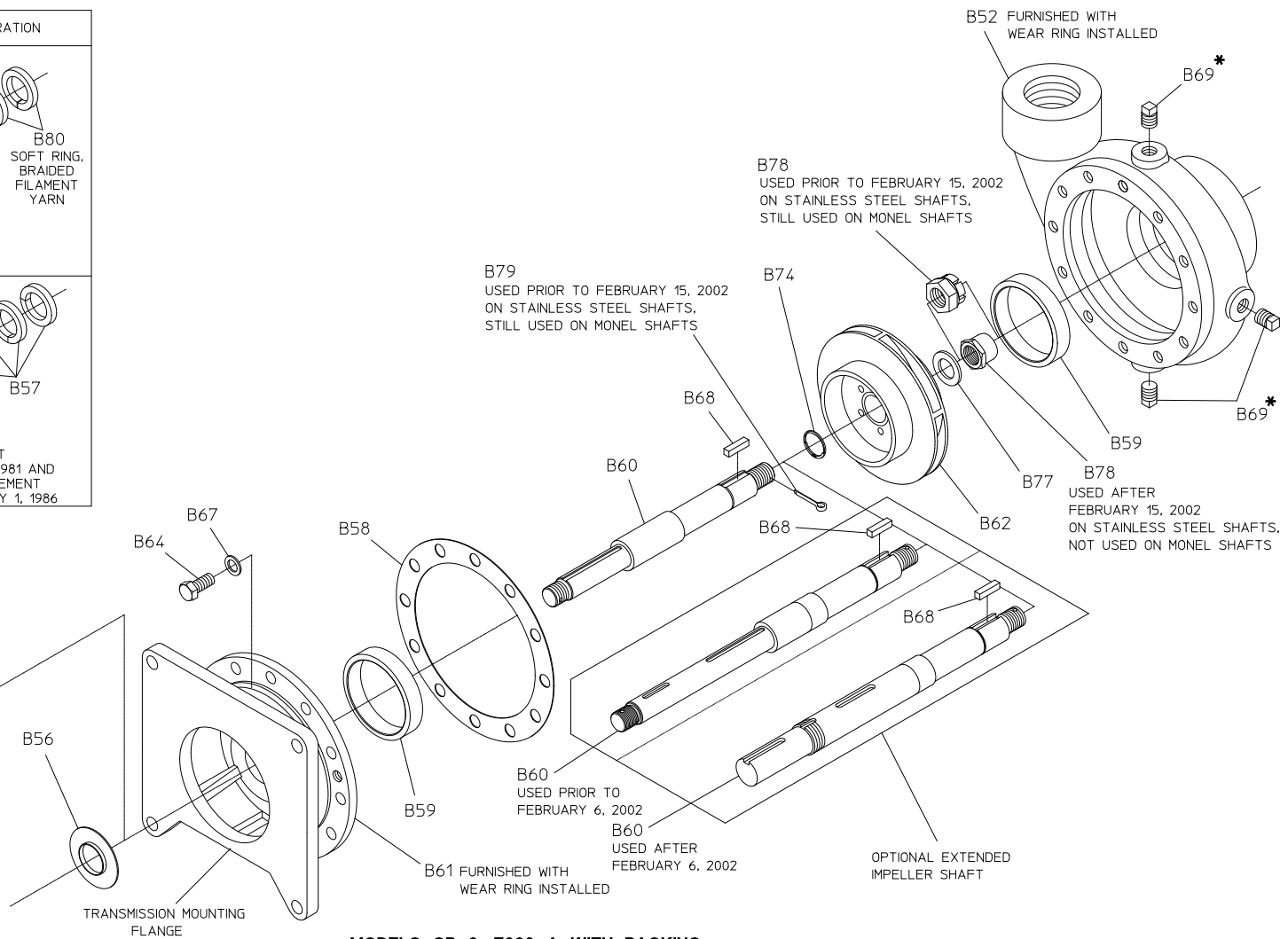
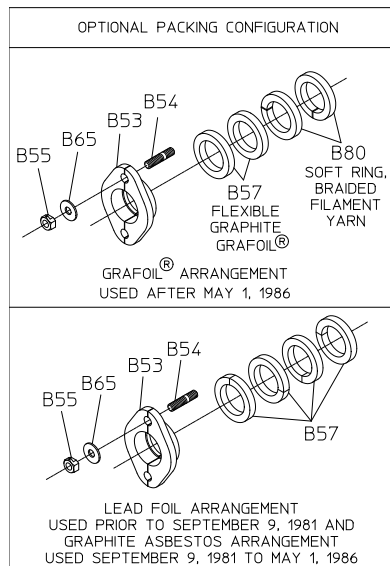
DETAIL A

SPL71487
PAGE 13 OF 17

Models CP-2, E302-A with Packing Exploded View

REF. NO.	DESCRIPTION
B52	Volute Body (Furnished with Wear Ring B59)
B53	Packing Gland Half
B54	Gland Stud
B55	Unbalanced Packing Nut
B56	Flinger Ring
B57	Graphite, Grafoil™ Lead Foil Packing Ring
B58	Volute Gasket
B59	Wear Ring, Standard , 0.025, 0.050, 0.075 in. U/S
B60	Impeller Shaft
B61	Pump Head (Furnished with Wear Ring B59)
B62	Impeller
B64	Cap Screw, 7/16-14 x 1 in. (For Cast Iron Bodies) or Cap Screw, Self-Locking (Nylok), SS, 7/16/14 x 1 in., (For Bronze Bodies)
B65	Plain Brass Washer

REF. NO.	DESCRIPTION
B67	Plain Copper Washer, 7/16 in.
B68	Square Key, SS, 1/4 x 1 in.
B69	Square Head Pipe Plug, 3/8 in.
B74	Snap Ring
B77	Shaft Nut Washer
B78	Locknut (Stainless Steel Shafts)
B78	Castellated Nut, SS 3/4-16 (Monel Shafts)
B79	Cotter Pin, SS, 1/8 x 1 in. (Monel Shafts)
B80	Soft Packing Ring



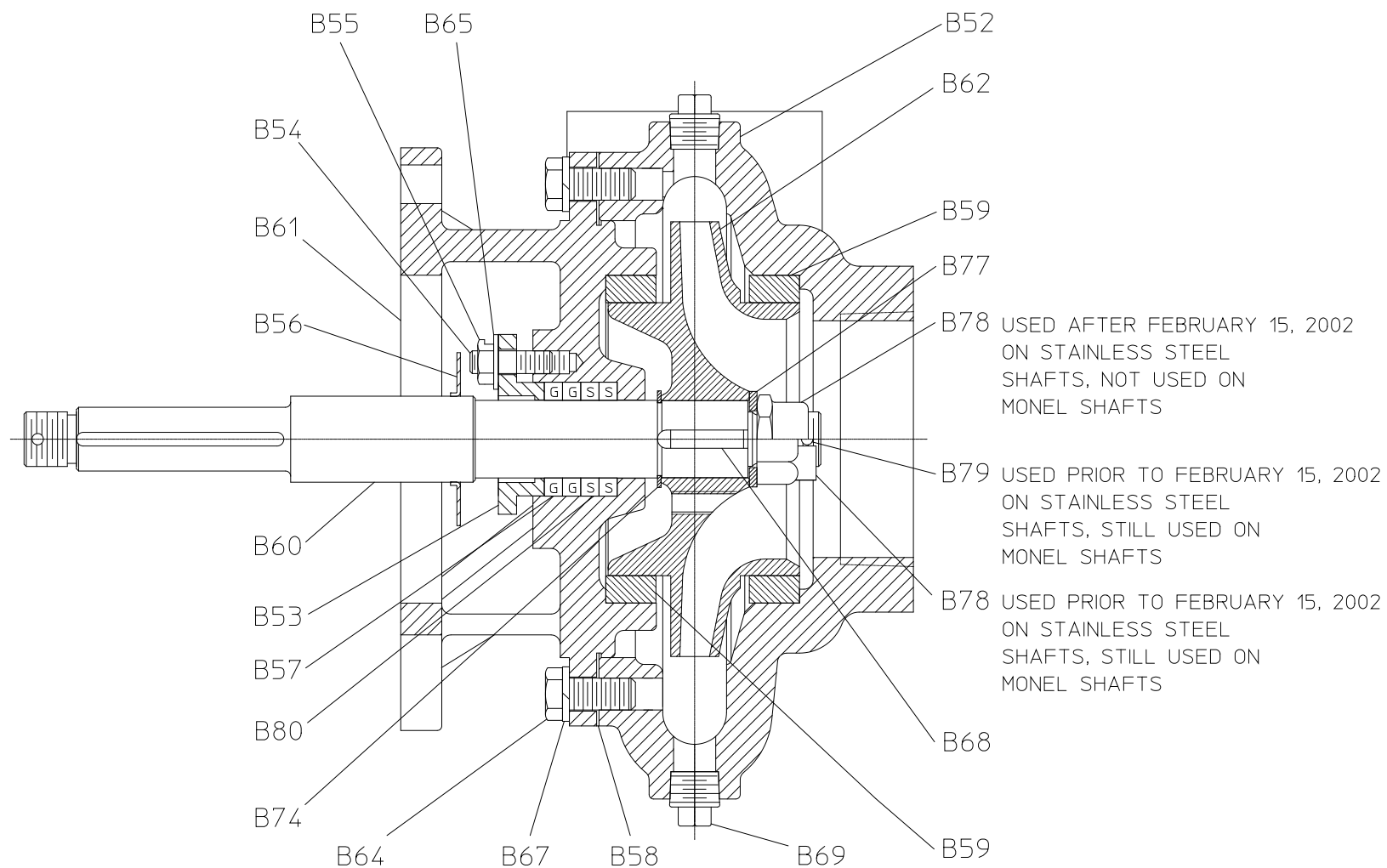
* NOTE: ONE OF THESE TAPS USED FOR PUMP DRAIN.

**MODELS CP-2, E302-A WITH PACKING
EXPLODED VIEW**

Models CP-2, E302-A with Packing Cross-Section View

REF. NO.	DESCRIPTION
B52	Volute Body (Furnished with Wear Ring B59)
B53	Packing Gland Half
B54	Gland Stud
B55	Unbalanced Packing Nut
B56	Flinger Ring
B57	Graphite, Grafoil™ Lead Foil Packing Ring
B58	Volute Gasket
B59	Wear Ring, Standard, 0.025, 0.050, 0.075 in. U/S
B60	Impeller Shaft
B61	Pump Head (Furnished with Wear Ring B59)
B62	Impeller
B64	Cap Screw, 7/16-14 x 1 in. (For Cast Iron Bodies) or Cap Screw, Self-Locking (Nylok), SS, 7/16/14 x 1 in., (For Bronze Bodies)
B65	Plain Brass Washer

REF. NO.	DESCRIPTION
B67	Plain Copper Washer, 7/16 in.
B68	Square Key, SS, 1/4 x 1 in.
B69	Square Head Pipe Plug, 3/8 in.
B74	Snap Ring
B77	Shaft Nut Washer
B78	Locknut (Stainless Steel Shafts)
B78	Castellated Nut, SS 3/4-16 (Monel Shafts)
B79	Cotter Pin, SS, 1/8 x 1 in. (Monel Shafts)
B80	Soft Packing Ring



MODELS CP-2, E302-A WITH PACKING

CROSS-SECTION VIEW