

Issued: 01/76
Revised: 09/25/02

W A T E R O U S

WATEROUS COMPANY
SOUTH ST. PAUL, MINNESOTA

VPE & VPES PRIMING PUMPS

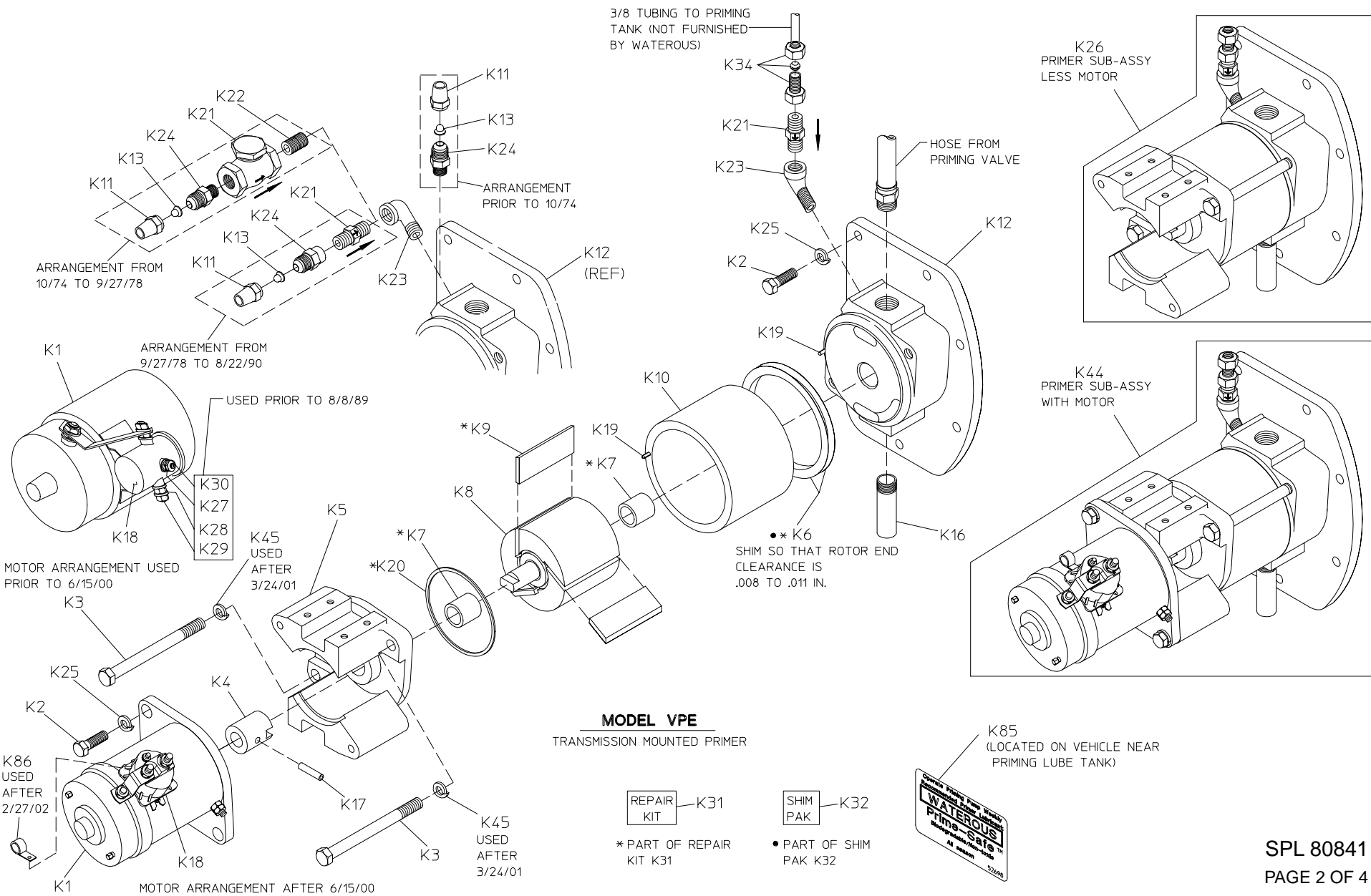
| REF NO. | DESCRIPTION | REF NO. | DESCRIPTION |
|---------|--|---------|---|
| K1 | Priming pump motor assembly (includes K4, K17 & K18) | K24 | Flare half union coupling, 1/4 NPT x 3/8 tube (used prior to 8/22/90) |
| K2 | Hex hd screw, 3/8-16 x 1-1/4 in., grade 5 (Y, W transmissions) | K25 | Lock washer, 3/8 in. (Y, W transmissions) |
| K2 | Hex hd screw, M10 x 30mm, grade 8.8 (C10 transmission) | K25 | Lock washer, M10 (C10 transmission) |
| K3 | Hex hd screw, 7/16-14 x 5 in. | K26 | Primer subassembly (less motor) |
| K4 | Shaft coupling | K27 | Lock washer, #10 (used prior to 8/8/89) |
| K5 | Front head subassembly (includes K7 & K19) | K28 | Lock washer, 5/16 in. (used prior to 8/8/89) |
| K6 | Shim, 0.005 in. thick (blue) (also see K32) | K29 | Hex nut, 1/4-28 (used prior to 8/8/89) |
| K6 | Shim, 0.0075 in. thick (transparent matte) (also see K32) | K30 | Hex nut, 10-32 (used prior to 8/8/89) |
| K6 | Shim, 0.010 in. thick (brown) (also see K32) | K31 | Repair kit (includes K6, K7, K9 & K20) |
| K7 | Shaft bearing | K32 | Shim pak (includes K6, .005, .0075 & .010 thick shims) |
| K8 | Rotor and shaft assembly (sold as assembly only) | K33 | Compression elbow, 90° (used after 8/22/90) |
| K9 | Vane | K34 | Compression connection, straight (used after 8/22/90) |
| K10 | Cylinder | K35 | Street elbow, 90°, 3/4 in. |
| K11 | Flared tube nut, 3/8 in. (used prior to 8/22/90) | K36 | Reducing bushing, 3/4 in. x 3/8 in. |
| K12 | Rear head subassembly (includes K7) | K37 | Pipe nipple, 3/8 x 1 in. |
| K13 | Orifice (used prior to 8/22/90) | K38 | Ball valve, 3/8 in. |
| K14 | Flared tube elbow, 1/4 NPT x 3/8 tube (used prior to 8/22/90) | K39 | Male tube elbow, 90°, 3/8 in. |
| K15 | Street elbow, 90°, 3/4 in. | K40 | Street elbow, 90°, 1/4 in. |
| K16 | Discharge pipe | K42 | Pipe coupling, 1/4 in. |
| K17 | Roll pin, SS, 1/4 x 1-1/8 in. | K43 | Return fitting |
| K18 | Solenoid switch, priming motor | K44 | Primer subassembly (with motor) |
| K19 | Groove pin, 1/8 x 5/8, SS | K45 | Lockwasher, 7/16 in. |
| K20 | O-ring, 3-3/4 x 3-7/8 in. | K85 | Prime-Safe™ lubricant decal |
| K21 | Check valve (includes orifice after 8/22/90) | K86 | Wire clamp |
| K22 | Pipe nipple, 1/4 x 7/8 in. (used prior to 9/27/78) | | |
| K23 | Street elbow, 90°, 1/4 in. (used prior to 1/15/96) | | |
| K23 | Street elbow, 45°, 1/4 in. (used after 1/15/96) | | |

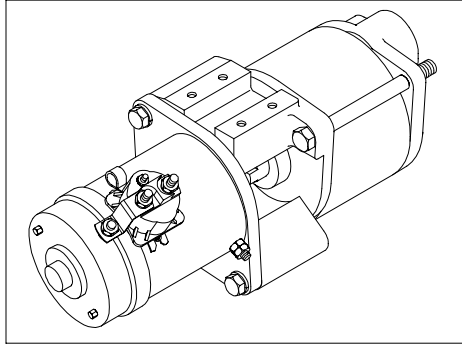
PLEASE NOTE

WHEN ORDERING PARTS PLEASE SUPPLY PUMP SERIAL NUMBER

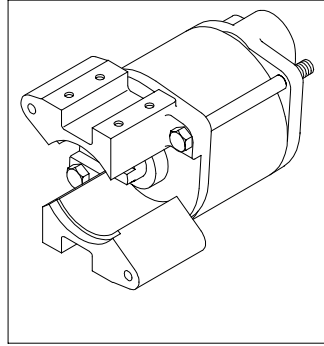
SPL80841

PAGE 1 OF 4



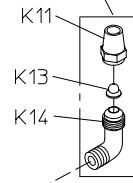


K44
PRIMER SUB-ASSY WITH MOTOR

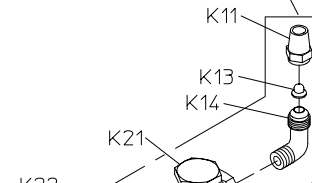


K26
PRIMER SUB-ASSY LESS MOTOR

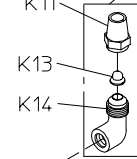
ARRANGEMENT PRIOR TO 10/74



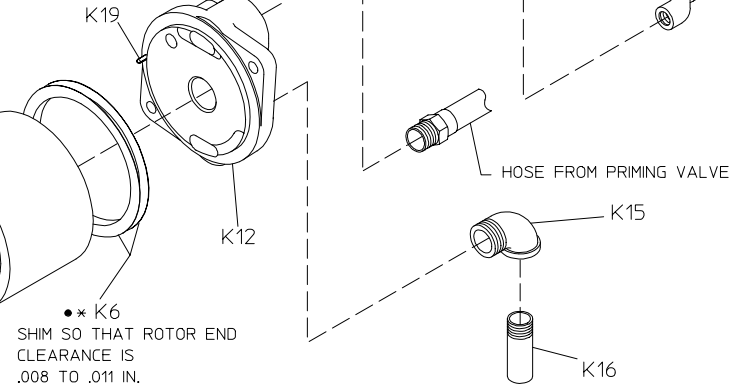
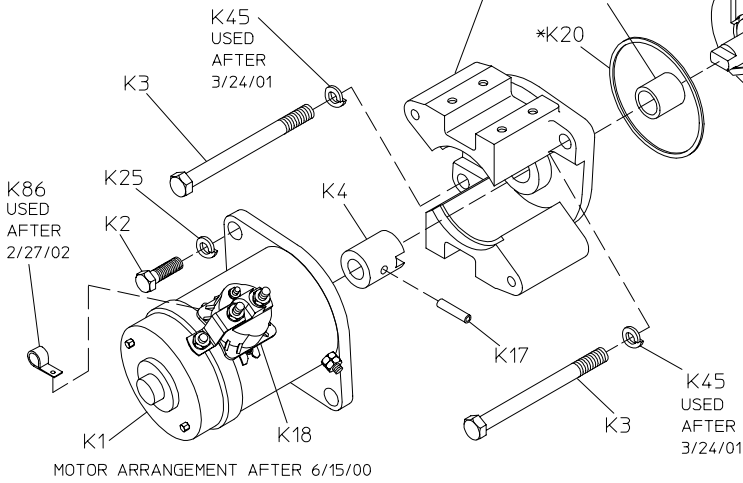
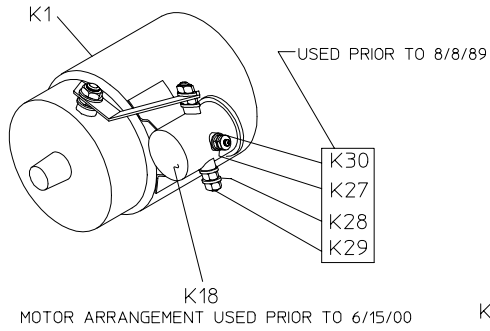
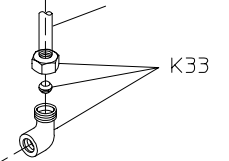
ARRANGEMENT FROM 10/74 TO 9/27/78



ARRANGEMENT FROM 9/27/78 TO 8/22/90



3/8 TUBING TO PRIMING TANK (NOT FURNISHED BY WATEROUS)



*K6 SHIM SO THAT ROTOR END CLEARANCE IS .008 TO .011 IN.

K85 (LOCATED ON VEHICLE NEAR PRIMING LUBE TANK)



MODEL VPES

SEPARATELY MOUNTED PRIMER
(SEE NEXT PAGE FOR VPES PRIMER
USED ON MODEL P200-B PUMP)



* PART OF REPAIR KIT K31



* PART OF SHIM PAK K32

