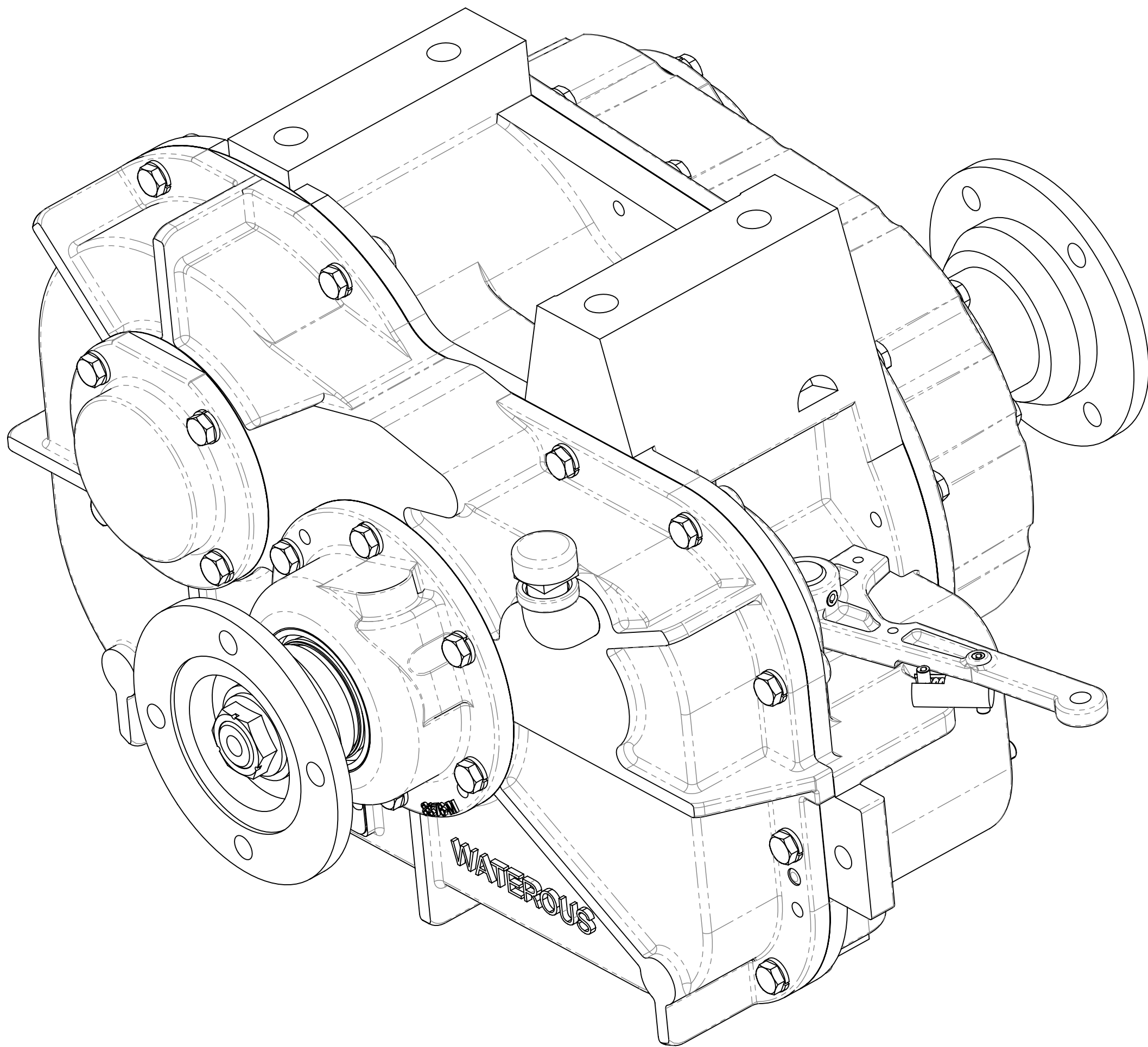


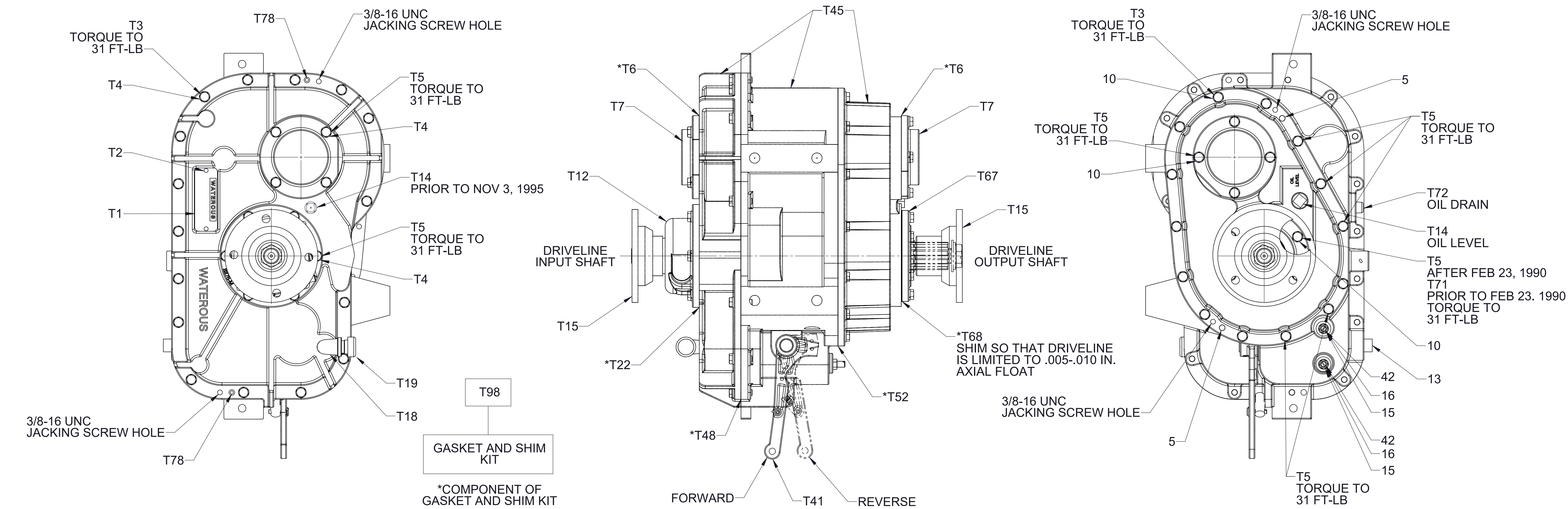
**TMR Reversing Transmission**

**Service Parts List**

Component		See Page
Case		2
Driveline	1-3/4 Inch	3
	2 Inch	4
Shift Mechanism		5
Optional Lube Pump		6



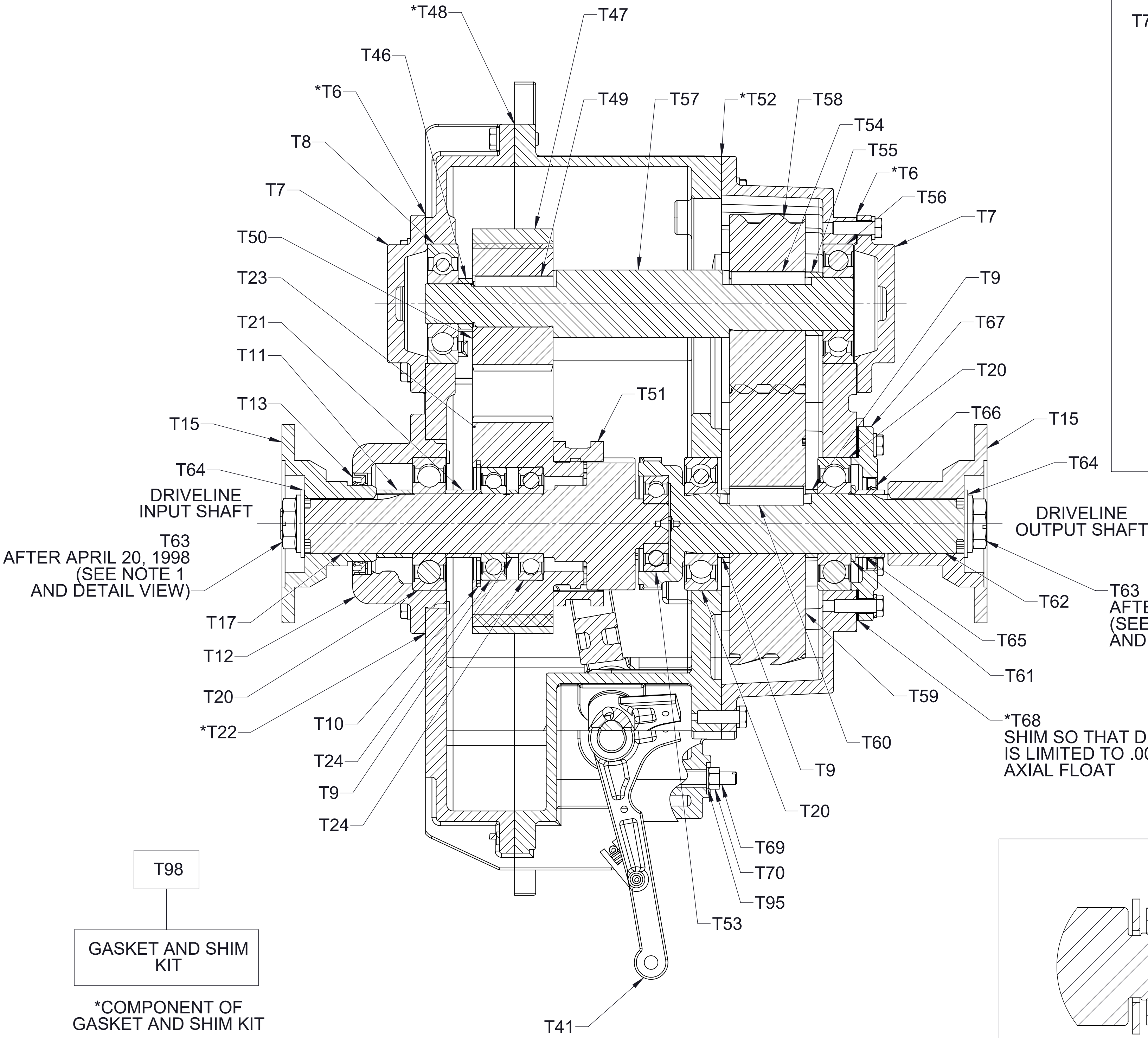
REF NO.	DESCRIPTION	REF NO.	DESCRIPTION
T1	Plate-Serial	T41	Arm-Shift
T2	Screw-Drive, #6 x 1/4 in	T45	Gear Case Assembly (Three Pieces)
T3	Screw-Hex Hd, 3/8-16 X 1-1/4 in	*T48	Gasket-Gear Case
T4	Washer-Lock, 3/8 in	*T52	Gasket-Cover, Gear Case
T5	Screw-Hex Head, 3/8-16 x 1-1/4 in, Heat Treated with Thread Seal	T67	Housing-Oil Seal
*T6	Gasket-Bearing Cover	*T68	Coupling Shaft Housing Shim Pack Includes (Shim .005, .007, and .010)
T7	Cover-Bearing	T69	Screw-Adjusting
T12	Housing-Drive Shaft	T70	Nut-Hex, 3/8-24
T14	Plug-Pipe, Square Hd, 3/4 NPT	T71	Screw-Hex Head, 3/8-16 x 1-1/8 in
T15	Flange-Companion, 1480/1550 Series (1-3/4-10 Spline)	T72	Plug-Drain, Magnetic, 3/4 in
T18	Elbow-Street, 90°, 1/2 NPT	T78	Pin-Dowel, 3/8 x 1 in
T19	Breather, 1/2 NPT	T79	Pin-Dowel, 3/8 x 1-1/4 in
*T22	Drive Shaft Housing Gasket	T95	Washer-Flat, 3/8 in
T32	Plug-Pipe, Square Hd, 1 NPT	T98	Gasket and Shim Kit (Includes T6, T22, T28, T37, T48, T52, T63, T68)



**CASE**

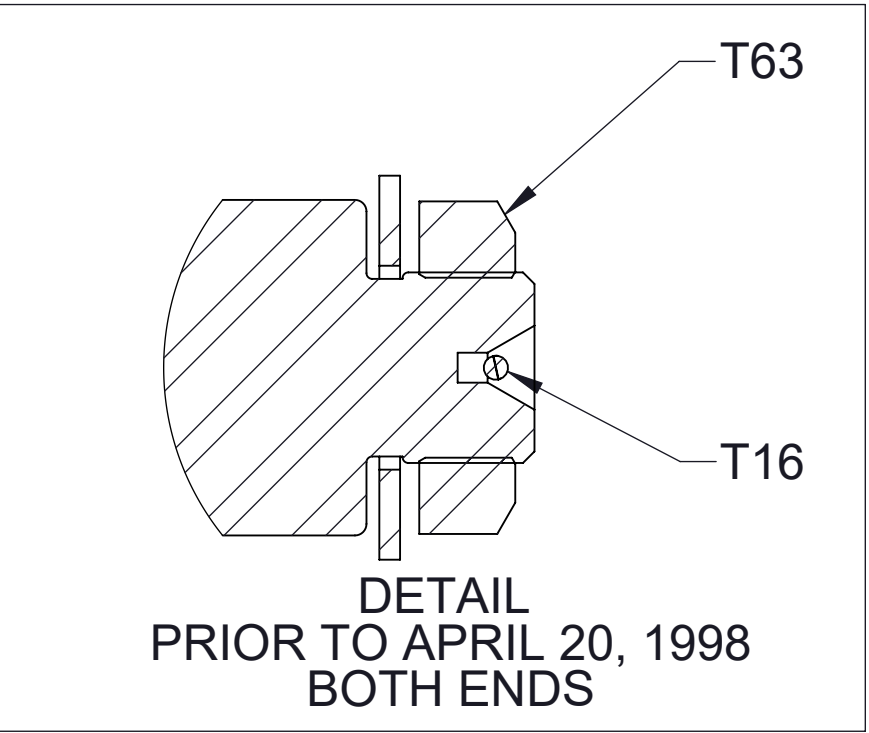
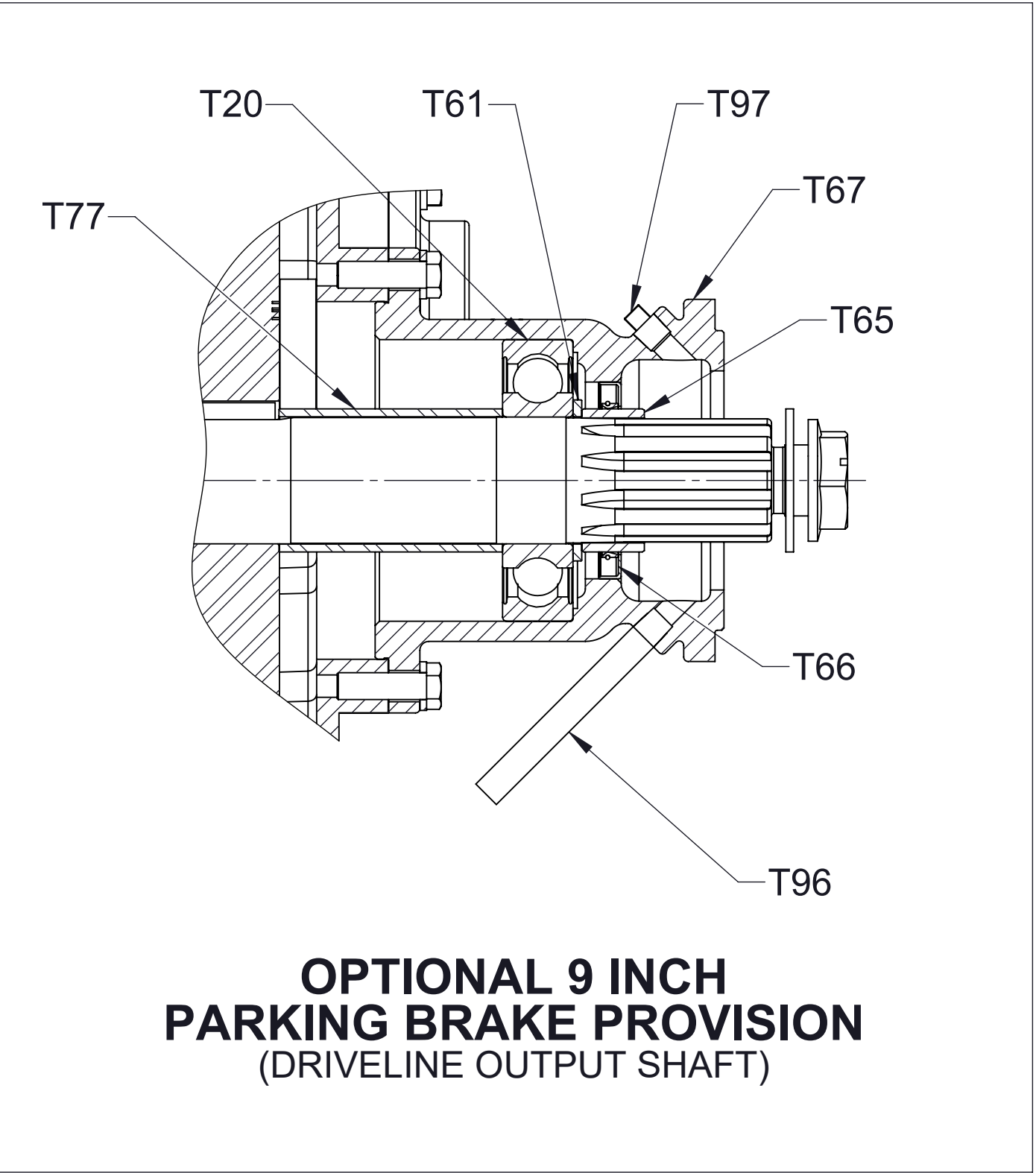


REF NO.	DESCRIPTION
*T6	Gasket-Bearing Cover
T7	Cover-Bearing
T8	Bearing, Ball, Single Row, 30 x 90 x 23 mm
T9	Spacer-Drive Shaft
T10	Ring-Retaining, Internal, 3.346 in Bore Dia
T11	Spacer-Bearing, Drive Shaft
T12	Housing-Drive Shaft
T13	Seal-Oil
T15	Flange-Companion, 1480/1550 Series (1-3/4-10 Spline)
T16	Cotter Pin, 1/8 x 1-3/4 in
T17	Shaft-Drive, 1-3/4-10 Spline
T20	Bearing, Ball, Single Row, 45 x 100 x 25 mm
T21	Spacer-Bearing
*T22	Shim (.007)
T23	Sprocket-Drive, 41T
T24	Bearing, Ball, Single Row, 45 x 85 x 19 mm
T41	Arm-Shift
T46	Spacer
T47	Chain and Pin Set
*T48	Gasket-Gear Case
T49	Key-Square, 5/16 x 2-5/16 in
T50	Sprocket-Driven, 26T
T51	Shift Collar
*T52	Gasket-Cover, Gear Case
T53	Bearing, Ball, Single Row, 30 x 72 x 19 mm
T54	Key-Square, 3/8 x 2-3/16 in
T55	Spacer
T56	Bearing, Ball, Single Row, 40 x 90 x 23 mm
T57	Shaft-Driven
T58	Gear-Driven, 38T
T59	Gear-Drive, 60T
T60	Key-Square, 1/2 x 2-3/16 in
T61	Spacer
T62	Shaft-Coupling, 1-3/4-10 Spline
T63	Nut-Self Locking, 1-20 UNEF-2B
T64	Washer-Plain, 1 in
T65	Sleeve-Seal, Oil
T66	Seal-Oil, 2 x 2-3/4 in
T67	Housing-Oil Seal
*T68	Coupling Shaft Housing Shim Pack Includes (Shim .005, .007, and .010)
T69	Screw-Adjusting
T70	Nut-Hex, 3/8-24
T95	Washer-Flat, 3/8 in
T98	Gasket and Shim Kit (Includes T6, T22, T28, T37, T48, T52, T63, T68)



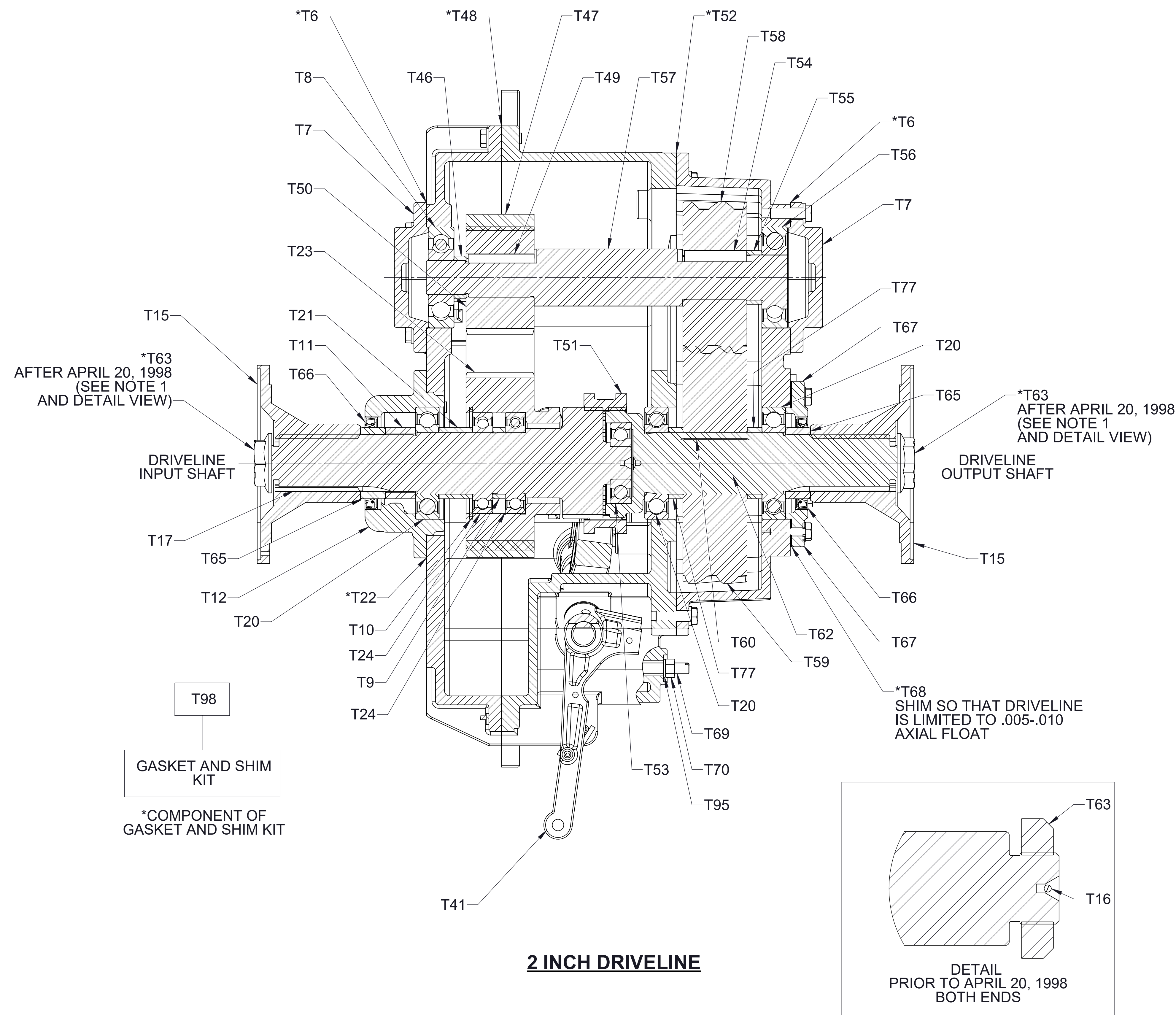
1-3/4 INCH DRIVELINE

REF NO.	DESCRIPTION
T20	Bearing, Ball, Single Row, 45 x 100 x 25 mm
T61	Spacer
T65	Sleeve-Seal, Oil
T66	Seal-Oil, 2 x 2-3/4 in
T67	Housing-Coupling Shaft
T77	Spacer-Shaft, Coupling
T96	Pipe-Drain
T97	Plug-Pipe, Square Hd, 1/8 NPT



NOTE:  
1. TORQUE SELF LOCKING NUT TO 400-450 LB-FT.

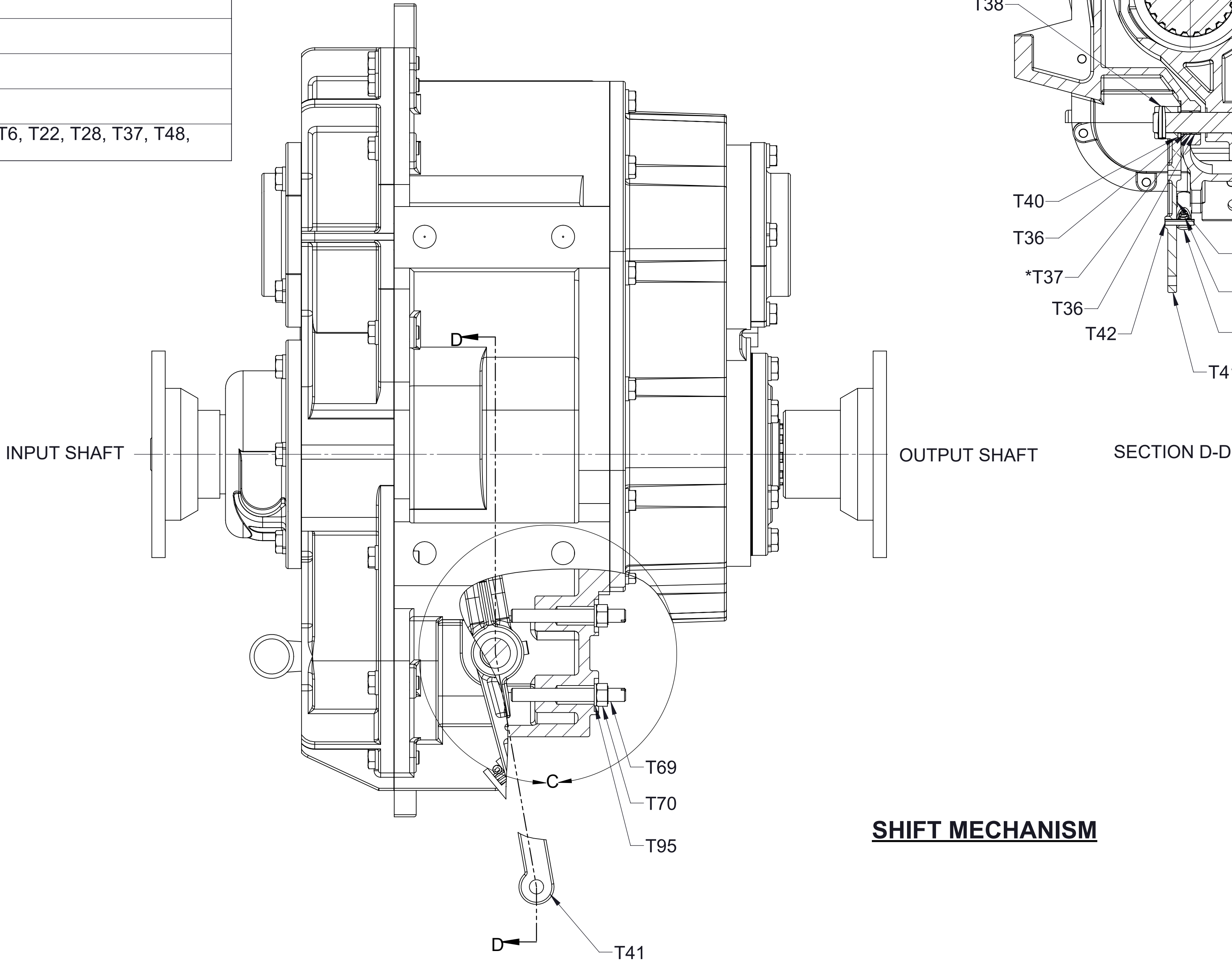
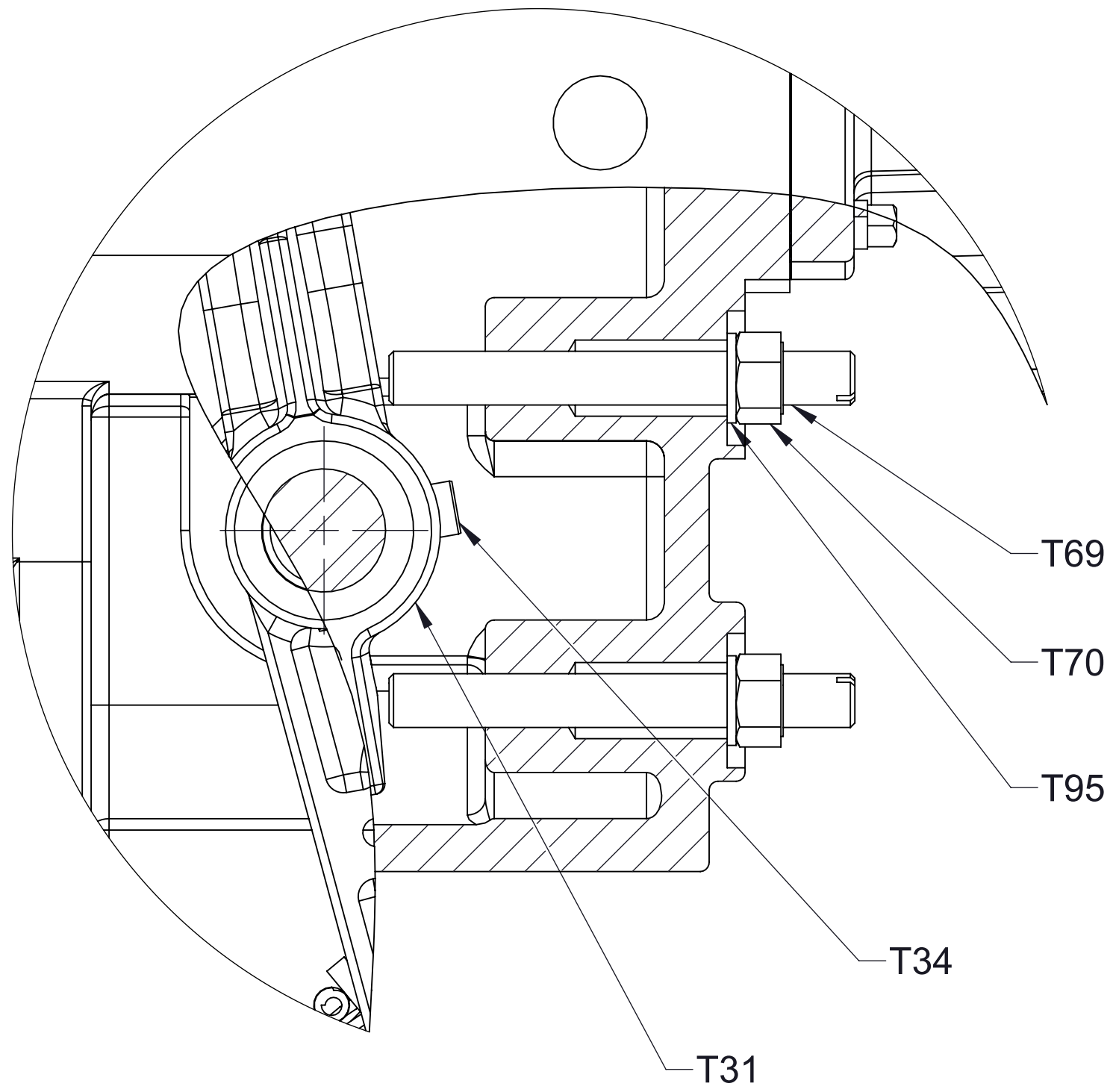
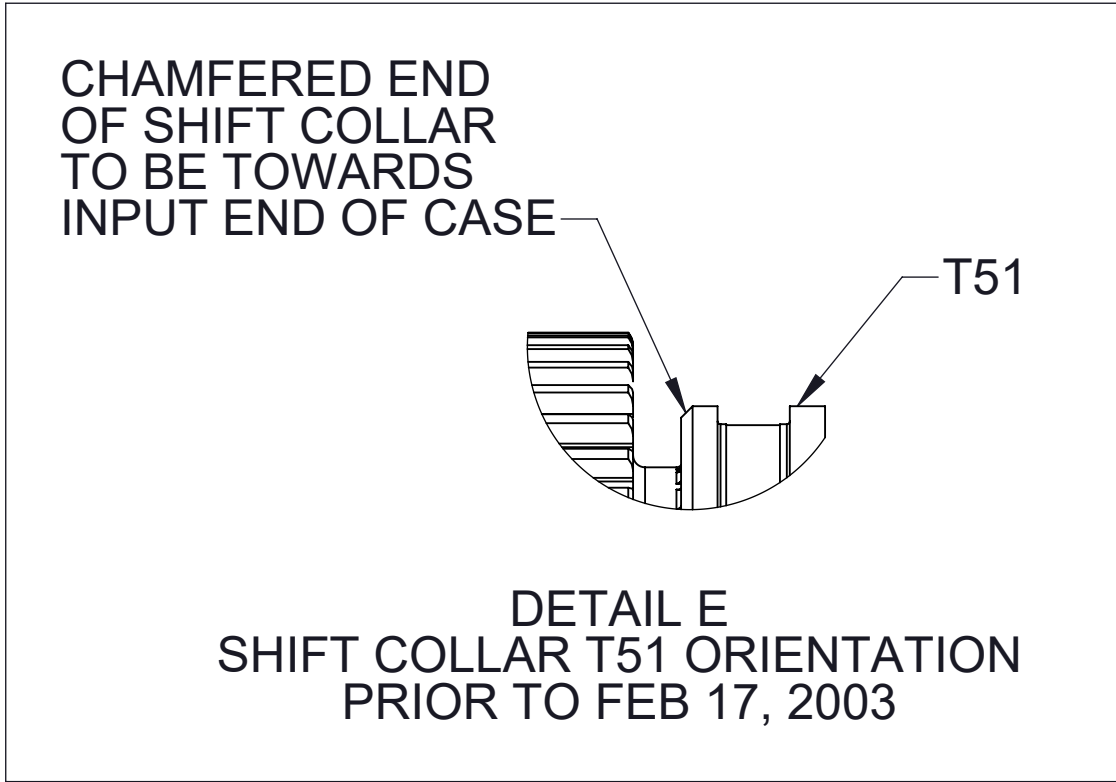
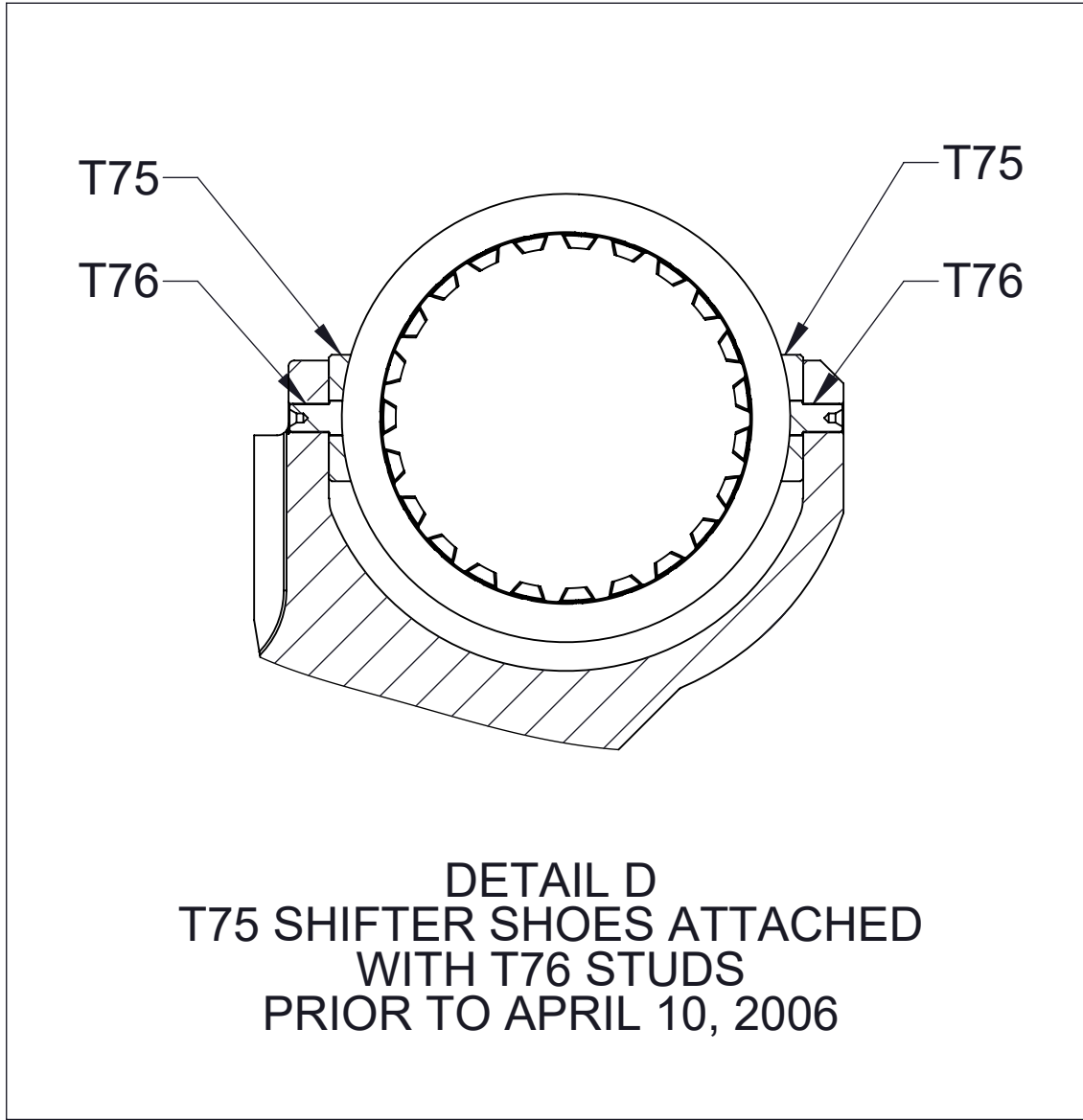




REF NO.	DESCRIPTION
*T6	Gasket-Bearing Cover
T7	Cover-Bearing
T8	Bearing, Ball, Single Row, 30 x 90 x 23 mm
T9	Spacer-Drive Shaft
T10	Ring-Retaining, Internal, 3-9/16 in Bore Dia
T11	Spacer-Drive Shaft
T12	Housing-Drive Shaft
T15	Flange-Companion
T16	Cotter Pin, 1/8 x 1-3/4 in
T17	Shaft-Drive, 2-10 Spline
T20	Bearing, Ball, Single Row, 55 x 100 x 21 mm
T21	Spacer-Drive Shaft
*T22	Shim (.007)
T23	Sprocket-Drive, 41T
T24	Bearing, Ball, Single Row, 55 x 90 x 18 mm
T41	Arm-Shift
T46	Spacer
T47	Chain and Pin Set
*T48	Gasket-Gear Case
T49	Key-Square, 5/16 x 2-5/16 in
T50	Sprocket-Driven, 26T
T51	Collar-Shift
*T52	Gasket-Cover, Gear Case
T53	Bearing, Ball, Single Row, 30 x 72 x 19 mm
T54	Key-Square, 3/8 x 2-3/16 in
T55	Spacer
T56	Bearing, Ball, Single Row, 40 x 90 x 23 mm
T57	Shaft-Driven
T58	Gear-Driven, 38T
T59	Gear-Drive, 60T
T60	Key-Square, 1/2 x 2-3/16 in
T62	Shaft-Coupling, 2-10 Spline
*T63	Nut-Self Locking, 1-1/4-18 UNEF-2B
T65	Sleeve-Oil Seal
T66	Seal-Oil, 2-1/2 x 3-1/4 in
T67	Housing-Oil Seal
*T68	Coupling Shaft Housing Shim Pack Includes (Shim .005, .007, and .010)
T69	Screw-Adjusting
T70	Nut-Hex, 3/8-24
T77	Spacer-Shaft, Coupling
T95	Washer-Flat, 3/8 in
T98	Gasket and Shim Kit (Includes T6, T22, T28, T37, T48, T52, T63, T68)

NOTE:  
1. TORQUE SELF LOCKING NUT TO 475-525 LB-FT.

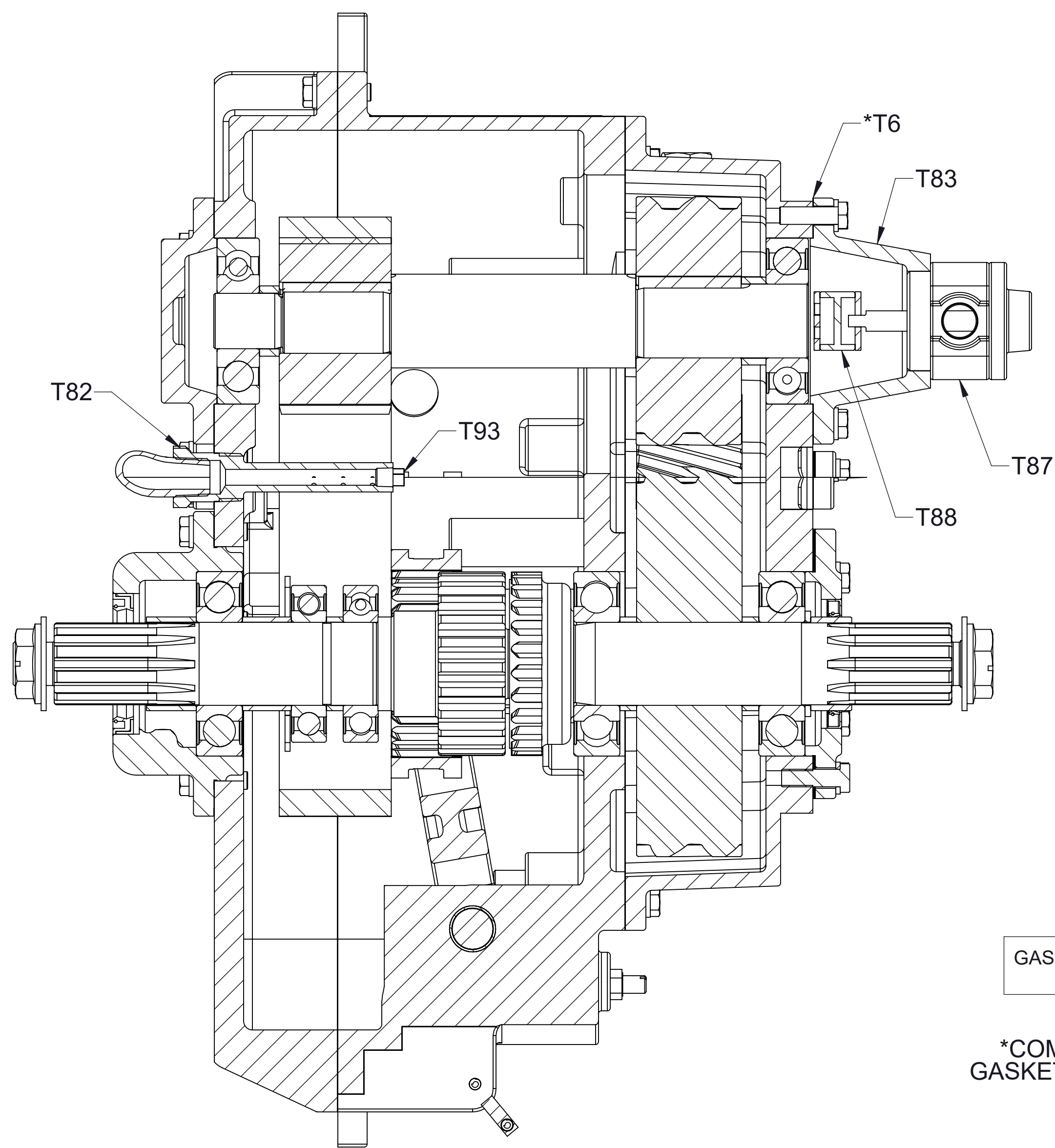
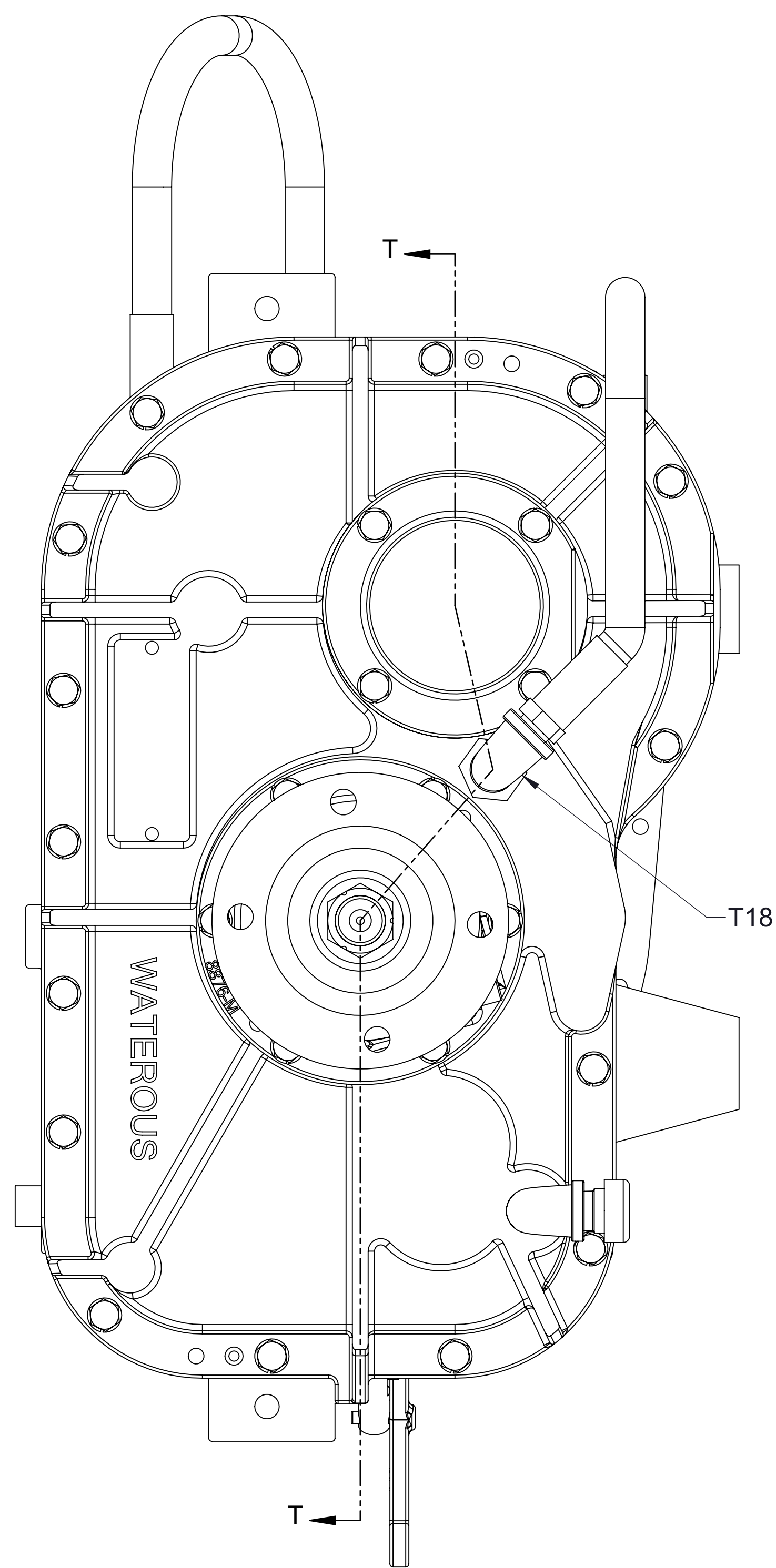
REF NO.	DESCRIPTION
T25	Shift Fork
T26	Shoe-Shift
T27	Locking-Arm
*T28	O-Ring, 3/8 x 1/2 in
T29	Pin-Cotter, 1/8 x 5/8 in
T30	Pin-Pivot
T31	Sector-Gear
T32	Plug-Pipe, Square Hd, 1 NPT
T33	Bearing-Sleeve, Self-Lubricating
T34	Pin-Spirol, 3/8 x 1-3/4 in
T35	Spacer
T36	Bushing-Shaft
*T37	O-Ring, 7/8 x 1 in
T38	Pin-Spirol, 5/16 x 1-3/8 in
T39	Shaft-Shift
T40	Spacer
T41	Arm-Shift
T42	Pin-Spirol, 1/4 x 1-1/4 in
T43	Housing-Spring
T44	Spring-Lock, Shift
T51	Collar-Shift
T69	Screw-Adjusting
T70	Nut-Hex, 3/8-24
T75	Shoe-Shift
T76	Shifter Shoe Stud
T95	Washer-Flat, 3/8 in
T98	Gasket and Shim Kit (Includes T6, T22, T28, T37, T48, T52, T63, T68)



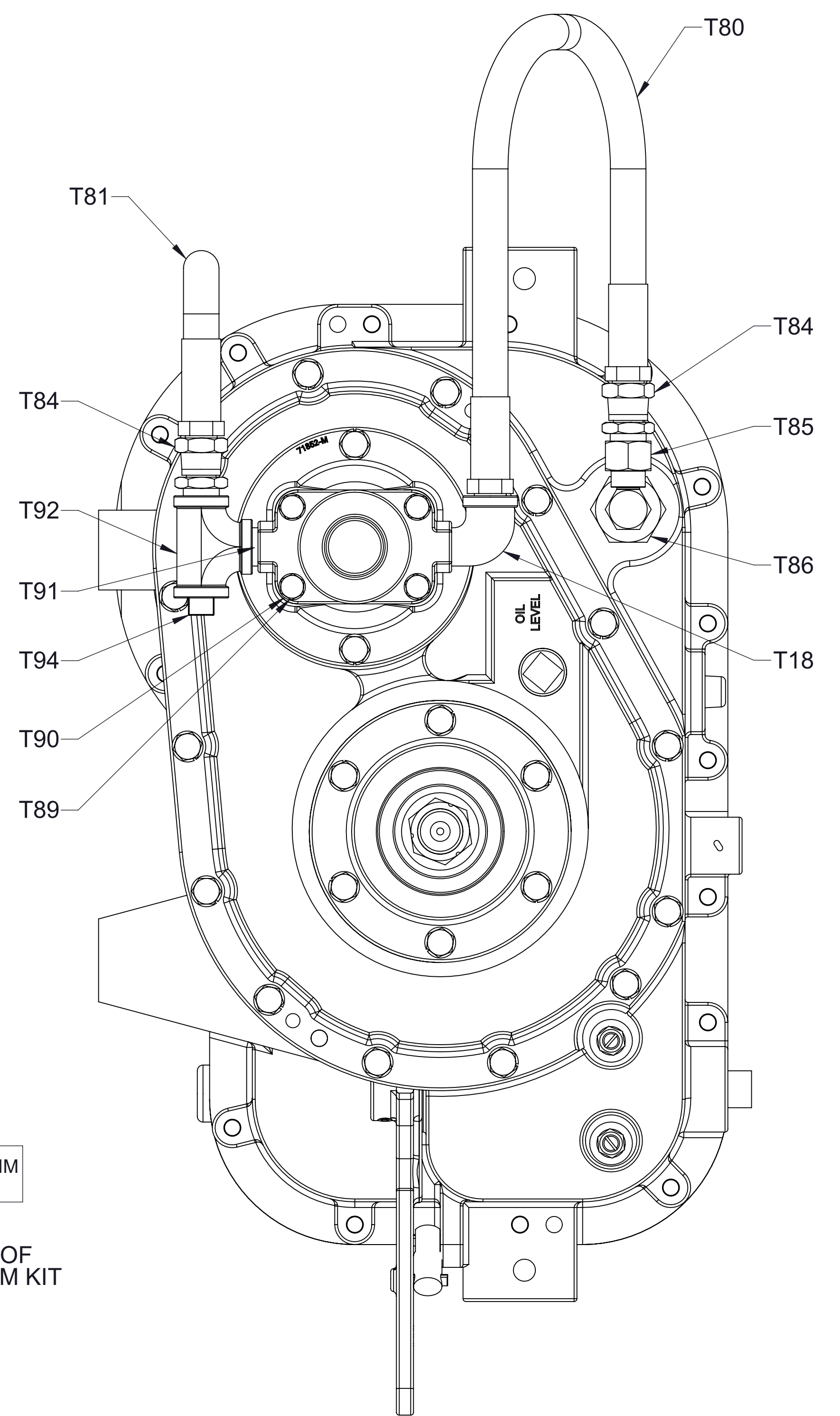
SHIFT MECHANISM



REF NO.	DESCRIPTION
*T6	Gasket-Bearing Cover
T18	Elbow-Street, 90°, 1/2 NPT
T80	Hose Assembly, 1/2 NPT x 15 in
T81	Hose Assembly, 1/2 NPT x 22 In
T82	Tube-Oil Spray
T83	Housing-Pump
T84	Union, Adapter, 1/2 Inch
T85	Adapter-Union, 90°
T86	Strainer - Oil
T87	Pump-Lube
T88	Coupling
T89	Screw-Hex Hd, 5/16-18 x 2 in
T90	Washer-Lock, 5/16 in
T91	Nipple-Pipe, 1/2 NPT x 1-1/8 in
T92	Tee-Standard, Pipe, 1/2 NPT
T93	Plug-Pipe, Square Hd, 1/8 NPT
T94	Plug-Pipe, Square Hd, 1/2 NPT
T98	Gasket and Shim Kit (Includes T6, T22, T28, T37, T48, T52, T63, T68)



T98  
GASKET AND SHIM  
KIT  
  
\*COMPONENT OF  
GASKET AND SHIM KIT



#### OPTIONAL LUBE PUMP