

TY Series Chain Drive Transmission Service Parts List

REF NO.	DESCRIPTION
T1	Ball bearing, coupling shaft
T2	Bearing spacer, coupling shaft
T3	Ball bearing, drive shaft pilot
T4	Shift collar
T5	Drive sprocket
T6	Needle bearing
T7	Drive shaft spacer
T8	Hex hd screw w/thread sealant, 3/8-16 x 1-1/4 in.
T9	Lock washer, 3/8 in.
T10	Drive gear or pulse generator, tachometer
T11	Drive shaft housing
T12	Cotter pin, SS, 1/8 x 1-3/4 in.
T13	Drive shaft
T14	Sleeve, oil seal
T15	Ball bearing, drive shaft
T17	Gasket, drive shaft housing
T18	Drive chain
T19	Oil seal
T22	Lock washer, 5/16 in.
T23	Oil seal housing
T24	Oil seal housing gasket
T25	Ball bearing, driven shaft
T26	Driven sprocket

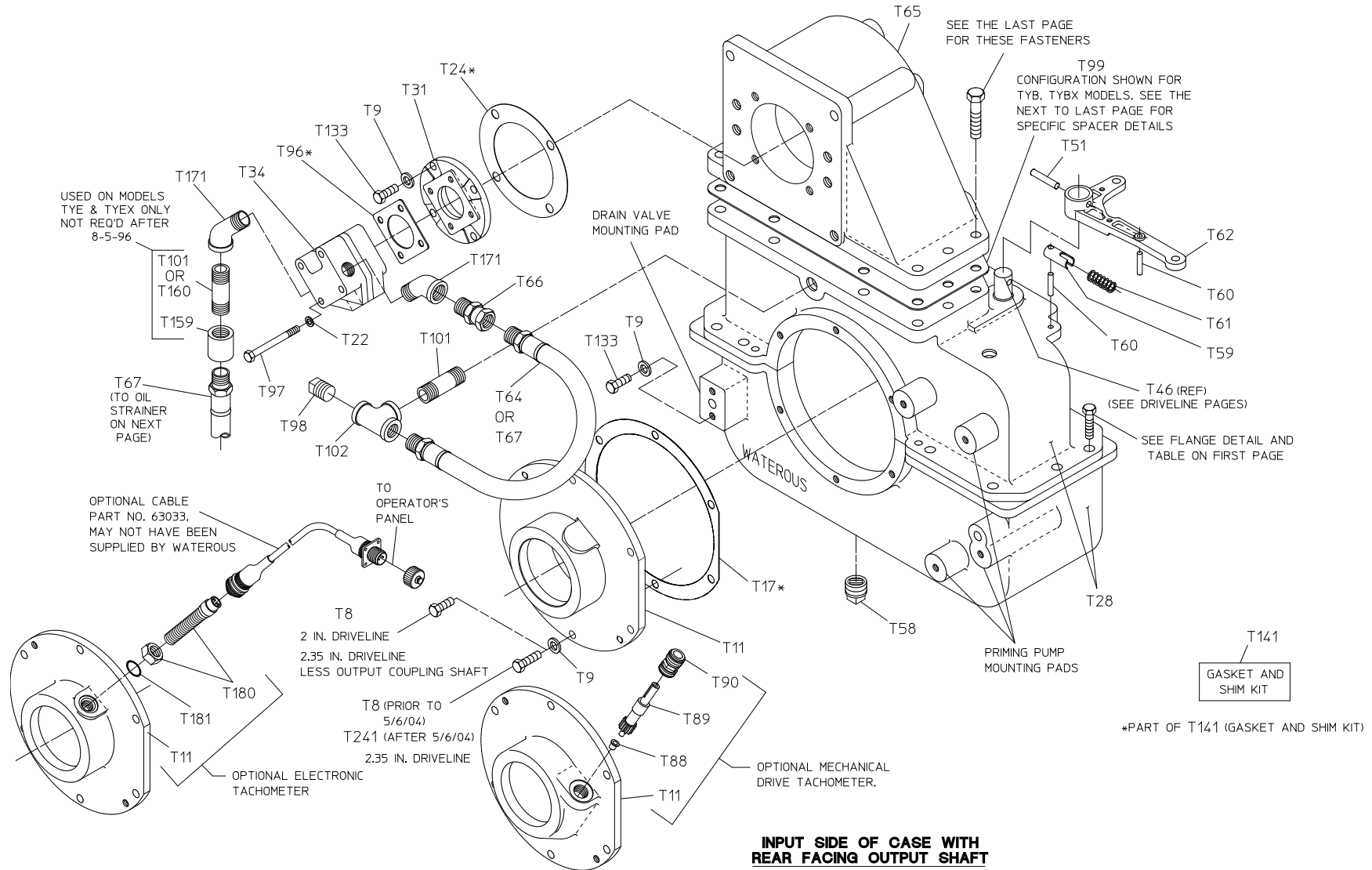
REF NO.	DESCRIPTION
T27	Breather
T28	Chain case assembly (supplied as assembly only consisting of midsection and bottom section)
T29	Bearing spacer, driven shaft
T30	Shim, bearing housing, 0.005 (blue) and 0.010 (brown) in. thick
T31	Pump support housing
T32	Bearing lock washer
T33	Bearing lock nut
T34	Pump, oil circulating
T37	Pivot Pin
T38	Locking arm
T39	O-ring
T40	Shifter shoe
T41	Shim, coupling shaft housing, 0.005 (blue), 0.007 (natural), and 0.010 (brown) in. thick
T42	Coupling shaft housing
T43	Shaft nut
T44	Coupling shaft
T45	Oil seal
T46	Shift shaft
T47	Sector gear
T48	Gear sector space

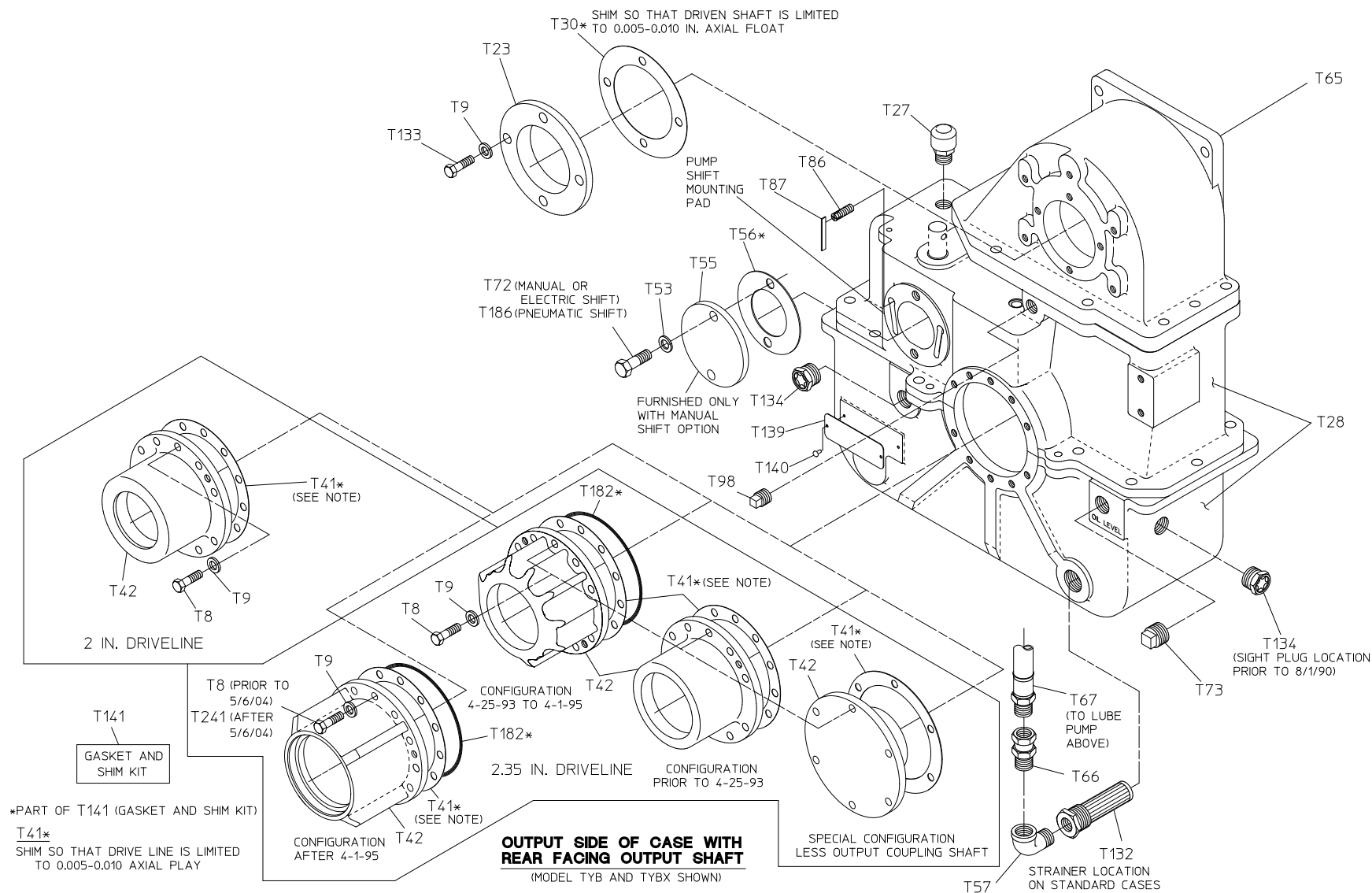
REF NO.	DESCRIPTION
T49	O-ring
T50	Shift shaft bushing
T51	Spirol pin, SS, 5/16 x 1-3/8 in.
T52	Hex hd screw, 1/2-13 x 1-1/4 in.
T53	Lock washer, 1/2 in.
T54	Spirol pin, heavy duty, 3/8 x 1-3/4 in. (prior to 9/25/98 on pneumatic shift, prior to 12/20/02 on manual or electric shift)
T55	Shift cover
T56	Shift cover gasket
T57	Street elbow, 90°, 1/2 in.
T58	Magnetic drain plug, 3/4 in.
T59	Spring housing, shift arm
T60	Spirol pin, SS, 1/4 x 1-1/4 in.
T61	Shift arm spring
T62	Shift arm
T64	Hose, oil pump to spray tube
T65	Chain case cap
T66	Straight adapter union, 1/2 in.
T67	Hose, sump to oil pump
T68	Hex hd screw, 1/2-20 x 2-1/4 or 4-1/4 in.
T69	Hex nut, 1/2-20
T70	Hex hd screw, 1/2-13 x 1-1/2 or 3-1/2 in.
T72	Hex hd screw, 1/2-13 x 1 in., Grade 5 with thread sealant

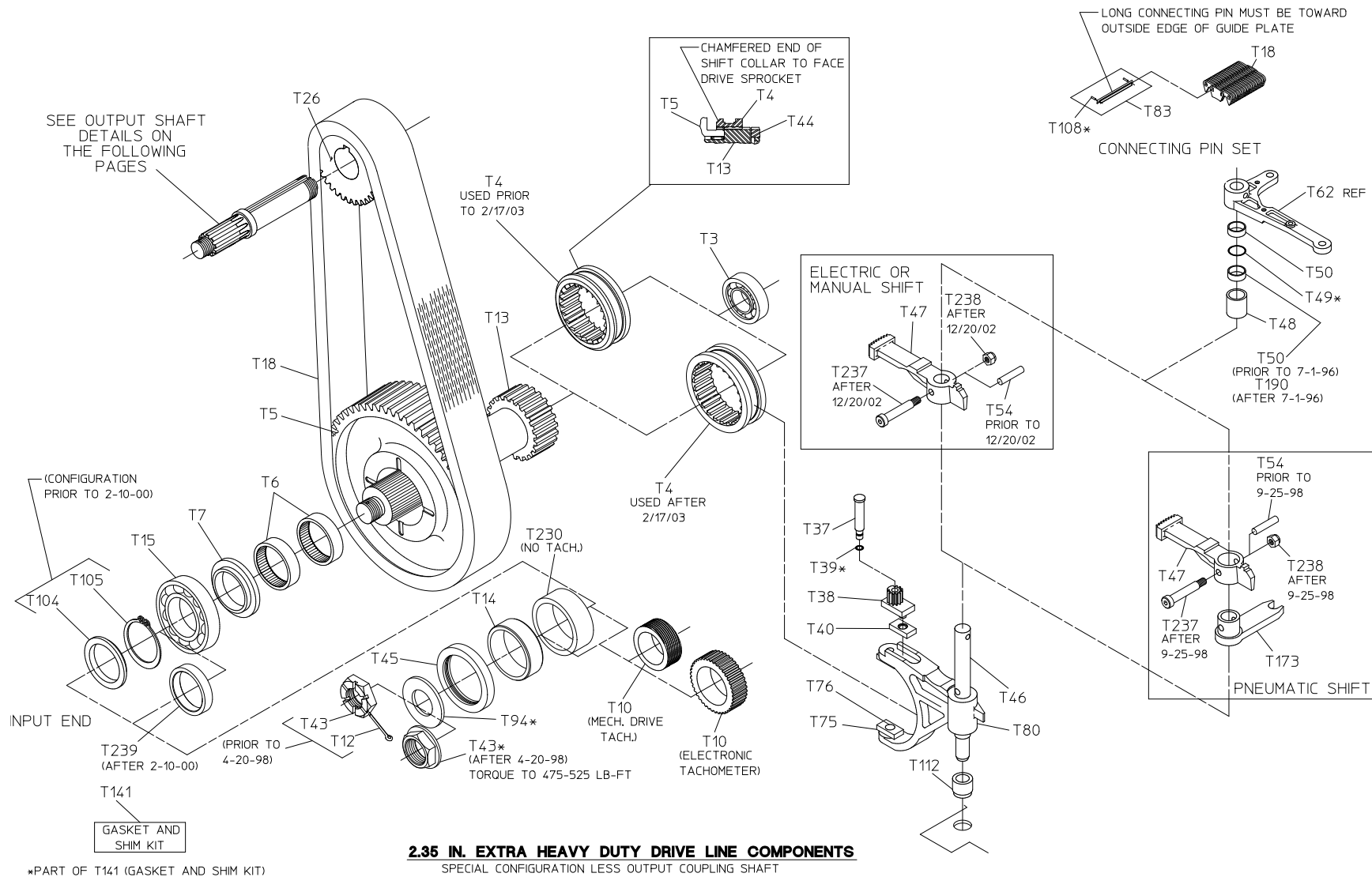
REF NO.	DESCRIPTION
T73	Sq hd pipe plug, 3/4 in.
T75	Shifter shoe (included with fork T80) Available individually for repairs
T76	Shifter shoe stud (included with fork T80) Available individually for repairs
T80	Shift fork (supplied with shifter shoes T75 and shifter shoe studs T76)
T83	Pin set, connecting (chain repairs)
T86	Adjusting screw
T87	Adjusting screw retainer
T88	Driven gear bushing, tachometer
T89	Driven gear, tachometer
T90	Driven gear sleeve, tachometer
T93	Hex hd screw, 1/2-20 x 1-3/4 in.
T94	Washer, plain, 1-1/4 in.
T95	Bearing spacer, driven shaft
T96	Gasket, oil pump
T97	Hex hd screw, 5/16-18 x 3-1/4 in.
T98	Sq hd pipe plug, 1/2 in.
T99	Spacer, cap
T100	Spacer, cap (YC only)
T101	Nipple, pipe, 1/2 x 2-1/2 in.
T102	Tee, pipe, 1/2 in.

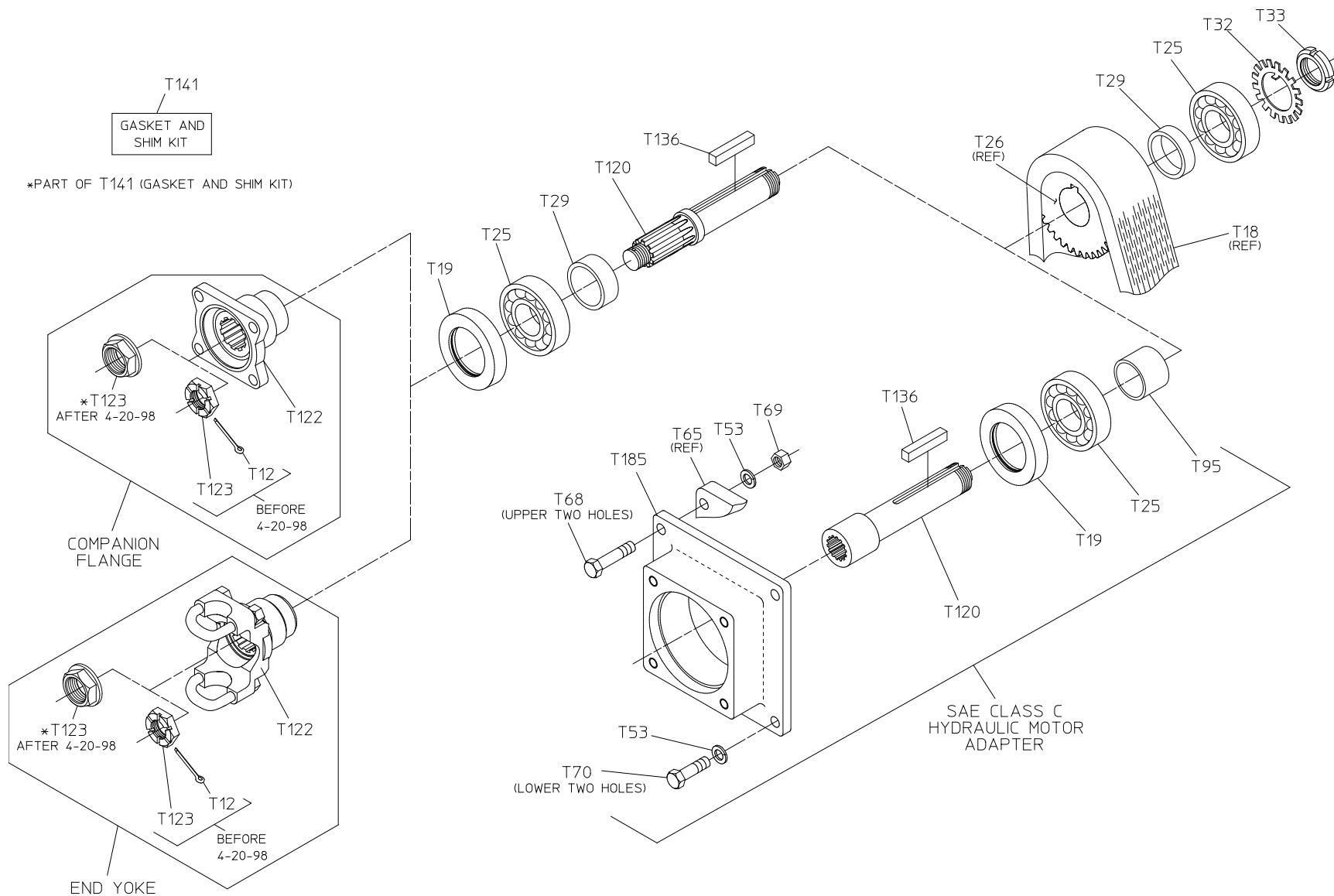
REF NO.	DESCRIPTION
T103	Pin, dowel, 1/2 x 1-1/2 in. (YB) or 3 in. (YC)
T104	Spacer, tachometer gear
T105	Ring, retaining
T108	Spirol pin, heavy duty, SS, 1/16 x 1/4 in. (chain repairs)
T109	Stud, 1/2-13 x 1/2-20 (YC only), 4-1/4
T110	Stud, 1/2-20 x 1/2-20 (YC only), 4-3/4
T112	Lower shift shaft bushing
T120	Shaft, driven
T122	End yoke, w/u-bolts or companion flange
T123	Nut, driven shaft
T131	Pin, dowel, 3/8 x 1 in. (part of T28)
T132	Oil strainer
T133	Hex hd screw, 3/8-16 x 1 in.
T134	Sight plug
T136	Square key, 5/16 x 2-1/8 in.
T139	Serial plate
T140	Rd hd drive screw, No. 6 x 1/4 in.
T141	Gasket and shim kit, consists of: T17, T24, T30, T41, T43, T56, T94, T96 and T123

REF NO.	DESCRIPTION
T171	Street elbow, 45°, 1/2 in.
T173	Actuating shift lever
T180	Magnetic pickup
T181	O-ring
T182	O-ring
T184	Ball Bearing, double row
T185	SAE Class C hydraulic motor adapter
T186	Hex hd screw, 1/2-13 x 1-1/4 in., Grade 5 (with thread sealant)
T187	Oil seal, 3-1/2 x 4-3/8 in.
T190	Bearing sleeve
T230	Drive shaft spacer
T231	Oil seal, 2-1/2 in. x 3-1/2 in.
T237	Shoulder screw, 3/8 x 1-3/4 in. (after 9/25/98 on pneumatic shift, after 12/20/02 on manual or electric shift)
T238	Lock nut, 5/16-18 in. (after 9/25/98 on pneumatic shift, after 12/20/02 on manual or electric shift)
T241	Hex hd screw with thread sealant, 3/8-16 x 1-1/2 in.

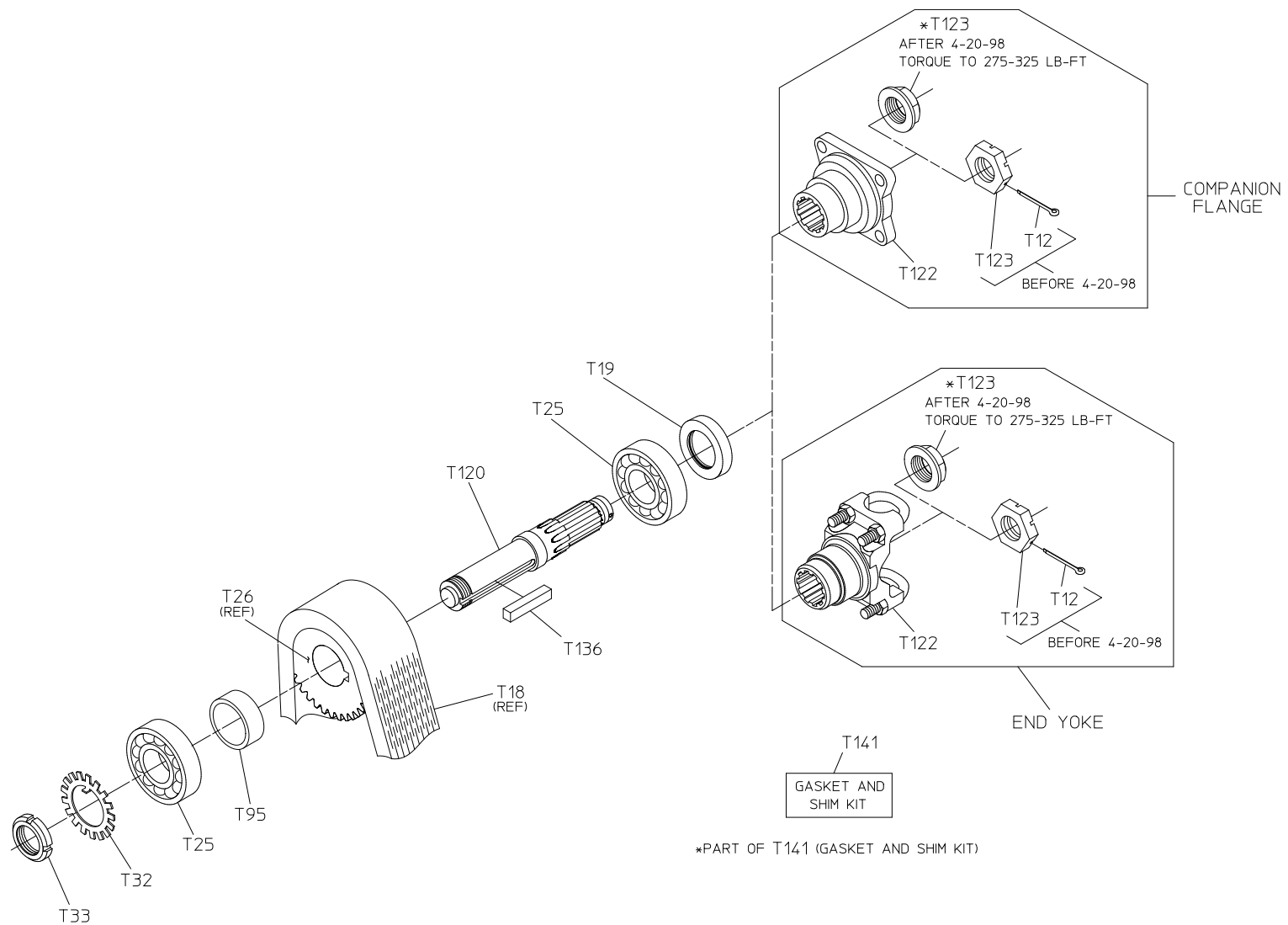




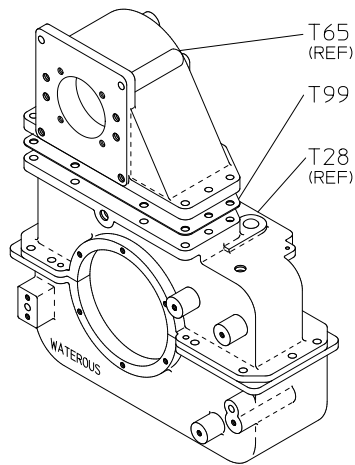




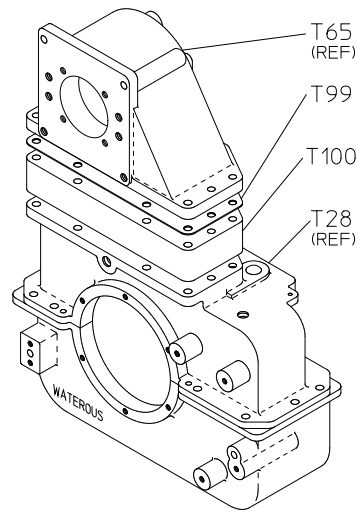
FRONT FACING OUTPUT SHAFT COMPONENTS
(REFER TO DRIVELINE PAGES)



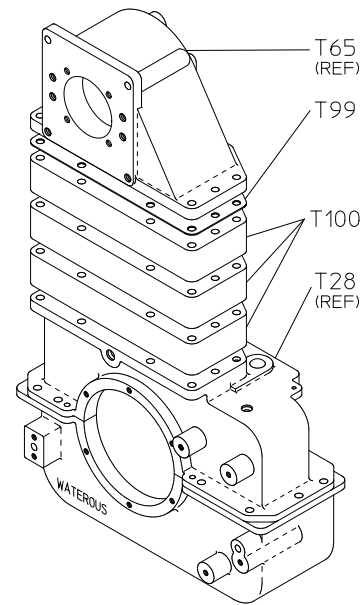
REAR FACING OUTPUT SHAFT COMPONENTS
(REFER TO DRIVELINE PAGES)



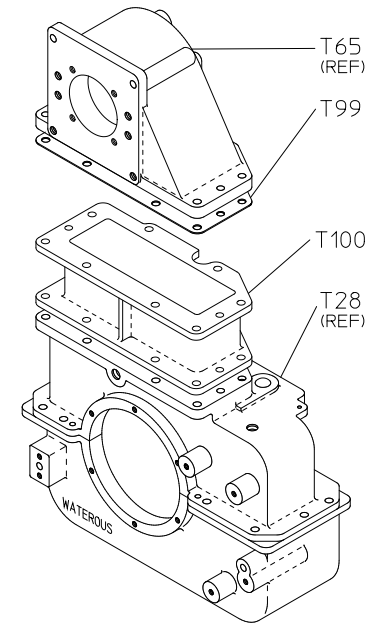
MODELS TYB, TYBX



MODELS TYC, TYCX



MODELS TYE, TYEX
(PRIOR TO 8-5-96)

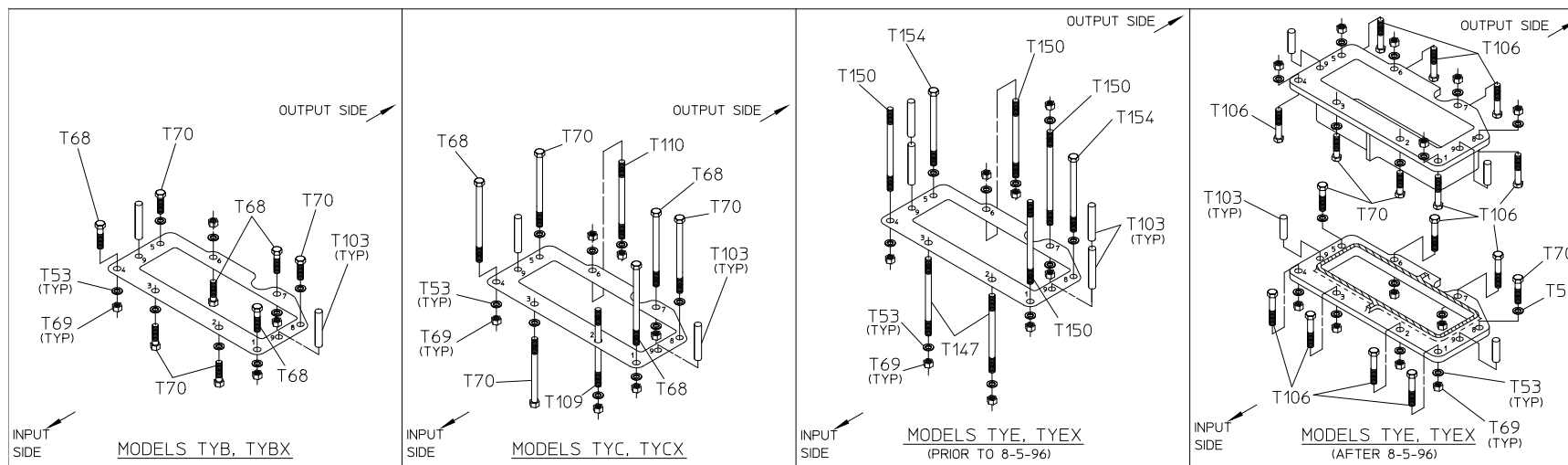


MODELS TYE, TYEX
(AFTER 8-5-96)

RATIOS	MODELS TYB, TYBX	MODELS TYC, TYCX		MODELS TYE, TYEX (PRIOR TO 8-5-96)		MODELS TYE, TYEX (AFTER 8-5-96)	
	T99	T99	T100	T99	T100	T99	T100
0.89	5	4	1	*	*	*	*
1.14	2	6	1	*	*	3	1
1.27	0	0	1	*	*	2	1
1.41	0	3	1	*	*	2	1
1.48	4	5	1	*	*	1	1
1.58	0	2	1	3	3	1	1
1.69	4	0	1	*	*	4	1
1.79	2	1	1	2	3	3	1
1.88	2	0	1	*	*	3	1
1.97	2	1	1	*	*	2	1
2.03	0	2	1	*	*	1	1
2.27	0	3	1	*	*	0	1
2.46	3	3	1	*	*	3	1
2.73	3	1	1	*	*	2	1

*NOTE: THESE RATIOS ARE NOT AS YET AVAILABLE FOR THESE MODELS.

SPACERS BETWEEN CAP (T65) AND CASE (T28)
(SEE NEXT PAGE FOR HARDWARE DETAILS)



REF. NO.	TYPE	THREAD	LENGTH (MODEL)			
			TYB, TYBX	TYC, TYCX	TYE, TYEX (PRIOR TO 8-5-96)	TYE, TYEX (AFTER 8-5-96)
T53	LOCKWASHER	1/2	---	---	---	---
T68	HEX HD SCREW	1/2-20	2-1/4	4-1/4	---	---
T69	HEX NUT	1/2-20	---	---	---	---
T70	HEX HD SCREW	1/2-13	1-1/2	3-1/2	---	1-1/2
T103	DOWEL PIN, 1/2	---	1-1/2	3	1-1/2	1-1/2
T106	HEX HD SCREW	1/2-20	---	---	---	2
T109	STUD	1/2-13 x 1/2-20	---	4-1/4	---	---
T110	STUD	1/2-20 x 1/2-20	---	4-3/4	---	---
T147	STUD	1/2-13 x 1/2-20	---	---	7-3/4	---
T150	STUD	1/2-20 x 1/2-20	---	---	8-3/8	---
T154	HEX HD SCREW	1/2-13	---	---	7	---

HOLE NO.	MODELS TYB, TYBX	MODELS TYC, TYCX	MODELS TYE, TYEX (PRIOR TO 8-5-96)		MODELS TYE, TYEX (AFTER 8-5-96)	
	ALL RATIOS	ALL RATIOS	158	179	ALL RATIOS	
					UPPER	LOWER
1	T68	T68	T150	T150	T106	T106
2	T70	T109	T147	T147	T70	T106
3	T70	T70	T147	T147	T70	T106
4	T68	T68	T150	T150	T106	T106
5	T70	T70	T154	T154	T106	T70
6	T68	T110	T150	T150	T106	T106
7	T68	T68	T150	T150	T106	T106
8	T70	T70	T154	T154	T106	T70
9	T103	T103	T185 (2)	T185 (2)	T103	T103

FLANGE HARDWARE BETWEEN CAP (T65) AND CASE (T28)