

Issued: 05/88
 Revised: 01/20/97

W A T E R O U S

WATEROUS COMPANY
 SOUTH ST. PAUL, MINNESOTA

CS PUMPS BODY ASSEMBLY

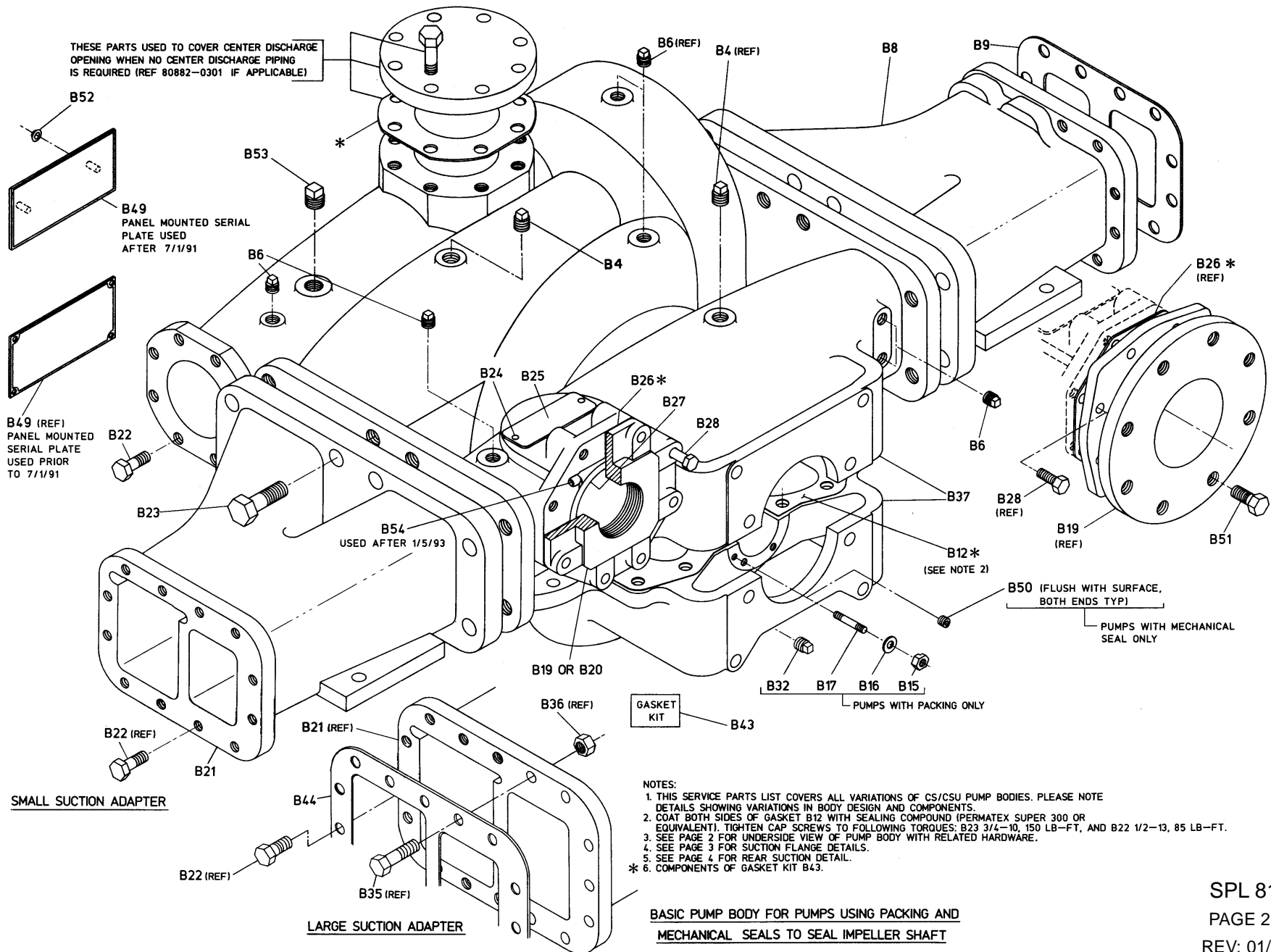
REF NO.	DESCRIPTION	REF NO.	DESCRIPTION
B2	Pipe tee, 1/4 in.	B28	Cap screw, 3/8-16 x 1 in. or 1-1/4 in.
B3	Close pipe nipple, 1/4 in. x 7/8 in.	B31	Rear suction fitting gasket
B4	Sq hd pipe plug, 3/8 in. (Used when priming valve is omitted)	B32	Pipe plug, 1/8 in.
B6	Sq hd pipe plug, 1/4 in.	B33	Discharge flange gasket (Iron Body only)
B7	Suction flange gasket	B34	Rear suction fitting
B8	Suction adapter, RH (or rear suction adapter, RH)	B35	Hex hd bolt, 1/2-20 x 2 in.
B9	Gasket, suction fitting, standard suction adapter	B36	Hex nut, 1/2-20
B10	Cap screw, 1/2-13 x 4-3/4 in.	B37	Body assembly (sold as assembly only) (Consists of volute body and volute cover)
B11	Dowel pin, 7/16 x 1-1/4 in.	B39	Suction flange gasket (Bronze body only)
B12	Gasket set, cover to body	B40	Cap screw, socket hd, 1/2-13 x 1-1/2 in.
B14	Cap screw, socket hd, 5/8-11 x 2-1/4 in.	B41	Blind flange
B15*	Unbalanced nut, 5/16-18	B42	Discharge flange gasket
B16	Flat washer, brass, 5/16 in.	B43	Gasket Kit consists of (B7, B12, B26, B33, B39, B42)
B17*	Stud, 5/16-18 x 1-5/8 in.	B44	Gasket, suction fitting, large suction adapter
B18	Cap screw, 1/2-13 x 1-1/2 in.	B45	Standard pipe cross, 1/4 in. x 1/4 in.
B19	Tank suction adapter, 2-1/2 NPT, 3 NPT, 4 ANSI or tank suction valve	B46	Reducing bushing, 1/4 in. x 1/8 in.
B20	Blind flange	B47	Hose assembly
B21	Suction adapter, LH	B48	Male union adapter, 1/8 in. x 1/8 in.
B22	Cap screw, 1/2-13 x 1-1/4 in.	B49	Serial plate (located at operators panel)
B23	Cap screw, 3/4-10 x 2 in.	B50	Set screw, socket hd, 5/16-18 x 1/2 in.
B24	Rd hd drive screw, No. 6 x 1/4 in.	B51	Cap screw, 1/2-13 x 1 in. (used only on B19 tank suction valve adapter)
B25	Serial plate (body mounted)	B52	Self threading nut
B26	Adapter gasket, tank suction	B53*	Sq hd pipe plug, 1/2 in.
B27*	Check valve, tank suction	B54*	Plain bearing, TFE (used after 1/5/93)

PLEASE NOTE

WHEN ORDERING PARTS PLEASE SUPPLY PUMP SERIAL NUMBER

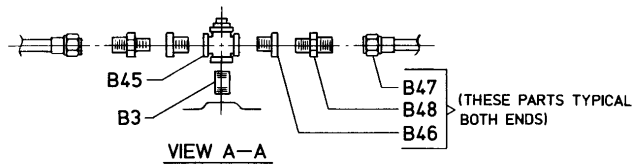
SPL81608

PAGE 1 OF 5

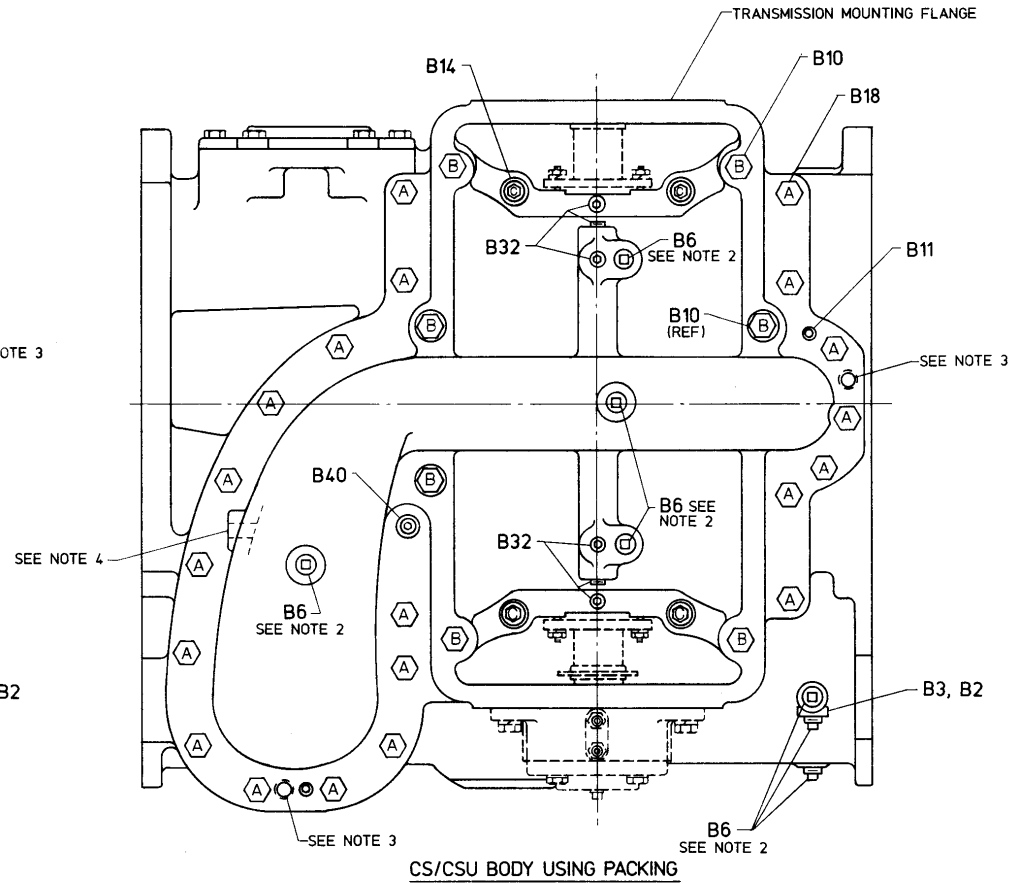
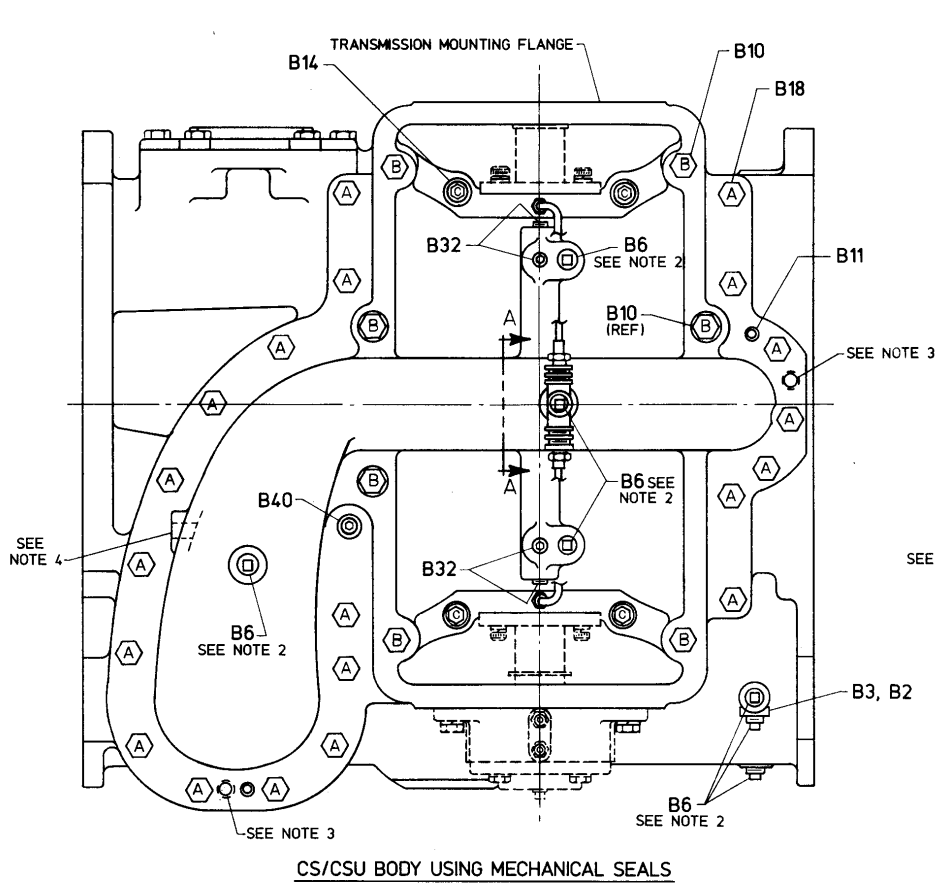


- NOTES:
1. THIS SERVICE PARTS LIST COVERS ALL VARIATIONS OF CS/CSU PUMP BODIES. PLEASE NOTE DETAILS SHOWING VARIATIONS IN BODY DESIGN AND COMPONENTS.
 2. COAT BOTH SIDES OF GASKET B12 WITH SEALING COMPOUND (PERMATEX SUPER 300 OR EQUIVALENT). TIGHTEN CAP SCREWS TO FOLLOWING TORQUES: B23 3/4"-10, 150 LB-FT, AND B22 1/2"-13, 85 LB-FT.
 3. SEE PAGE 2 FOR UNDERSIDE VIEW OF PUMP BODY WITH RELATED HARDWARE.
 4. SEE PAGE 3 FOR SUCTION FLANGE DETAILS.
 5. SEE PAGE 4 FOR REAR SUCTION DETAIL.
 - * 6. COMPONENTS OF GASKET KIT B43.

BASIC PUMP BODY FOR PUMPS USING PACKING AND MECHANICAL SEALS TO SEAL IMPELLER SHAFT

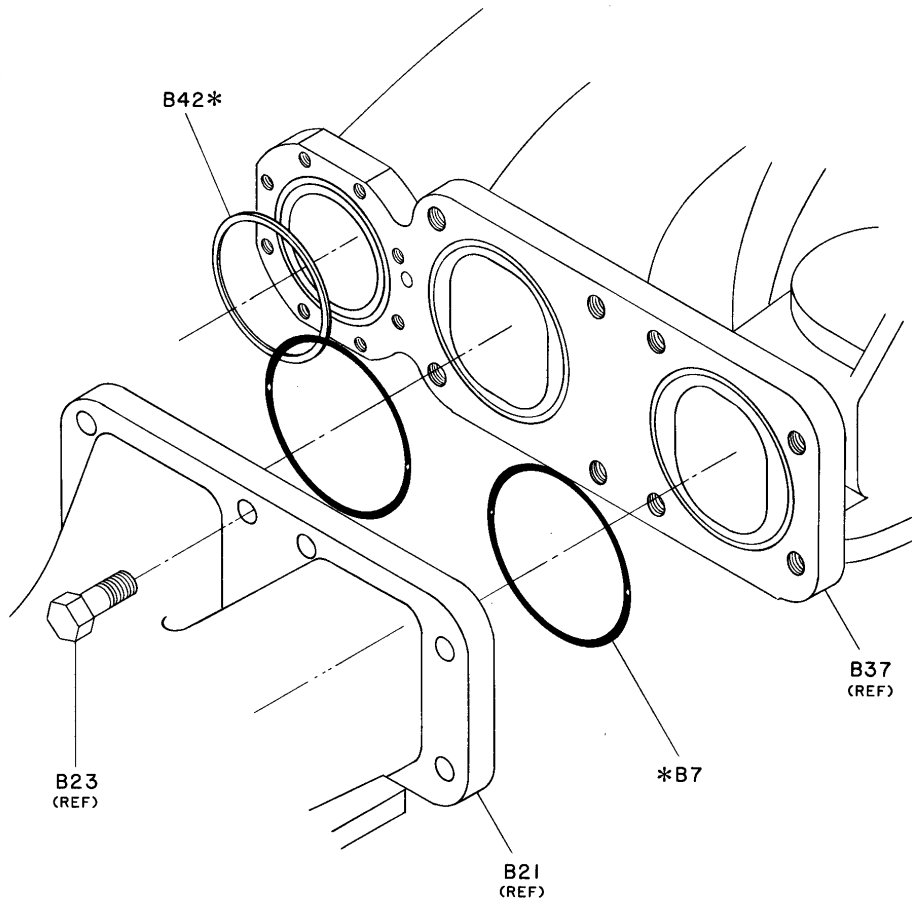


FASTENER TYPE AND SIZE		
REF NO.	DESCRIPTION	QTY
B10	HEX HEAD, 1/2-13 X 4-3/4	7
B14	HEX HEAD, 5/8-11 X 2-1/4	4
B18	HEX HEAD, 1/2-13 X 1-1/2	20
B40	SOCKET HEAD, 1/2-13 X 1-1/2	1

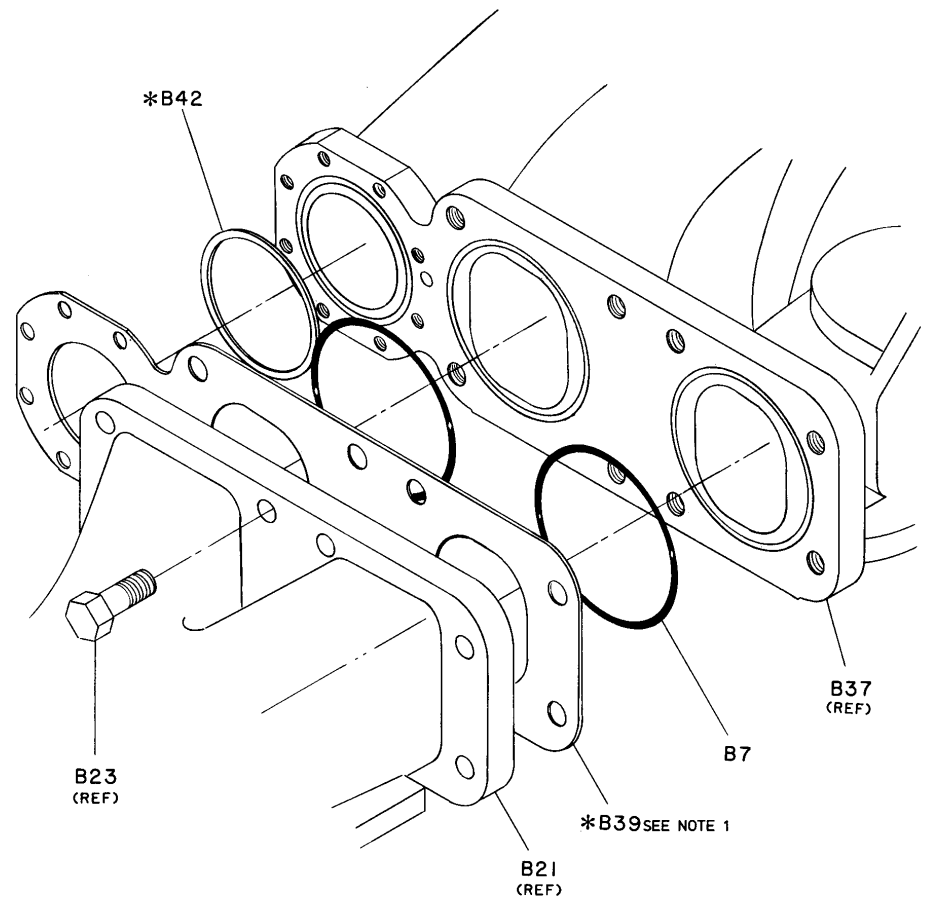


NOTES

1. TIGHTEN CAP SCREWS TO FOLLOWING TORQUES: HEX HEAD SCREWS B10, AND B18 TO 85 LB-FT, SOCKET HEAD SCREWS B14 (UNTIL 3-1-76) B40 TO 85 LB-FT, AND B14 (BEGINNING 3-1-76) TO 125 LB-FT.
2. WATEROUS FURNISHES PUMP WITH PIPE PLUGS INSTALLED IN THESE HOLES, BUT THE APPARATUS BUILDER MAY HAVE REMOVED THEM AND INSTALLED PIPING TO THE DRAIN VALVE.
3. THESE ARE 1/2-13 UNC TAPPED HOLES TO ACCOMMODATE THE USE OF JACKING SCREWS DURING DISASSEMBLY.
4. THIS IS A 1/2 DIA UNTAPPED HOLE WHICH IS REQUIRED TO DRAIN A CORED POCKET IN THE COVER CASTING AND DOES NOT REQUIRE A PLUG.



IRON PUMP ONLY



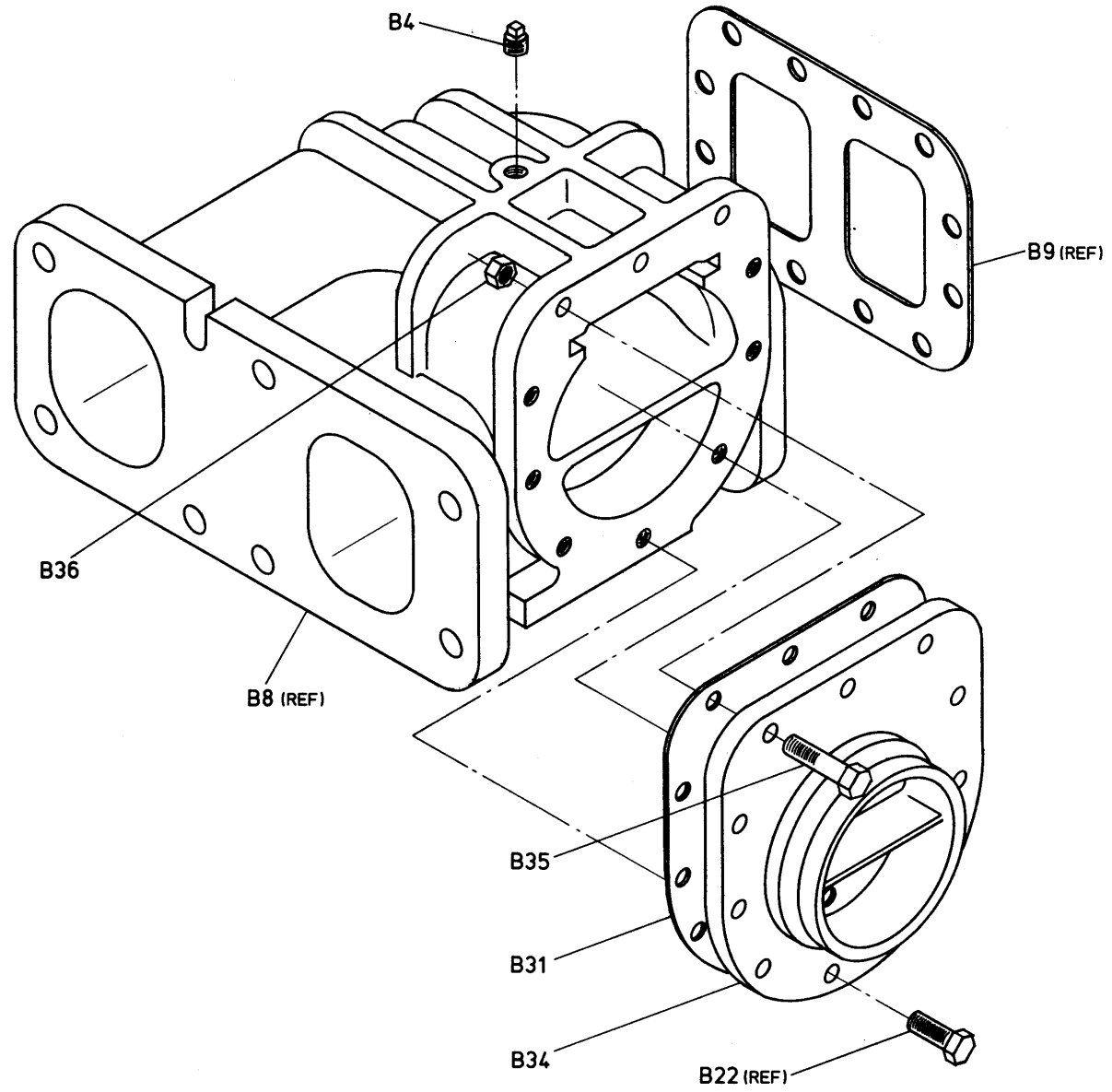
BRONZE PUMP ONLY

* PARTS OF GASKET KIT B43

SUCTION FLANGE GASKET DETAIL

NOTES:

- 1.) COAT BOTH SIDES OF GASKET B39 WITH SEALING COMPOUND (PERMATEX SUPER 300 OR EQUIVALENT).



REAR SUCTION ADAPTER AND FITTING DETAIL