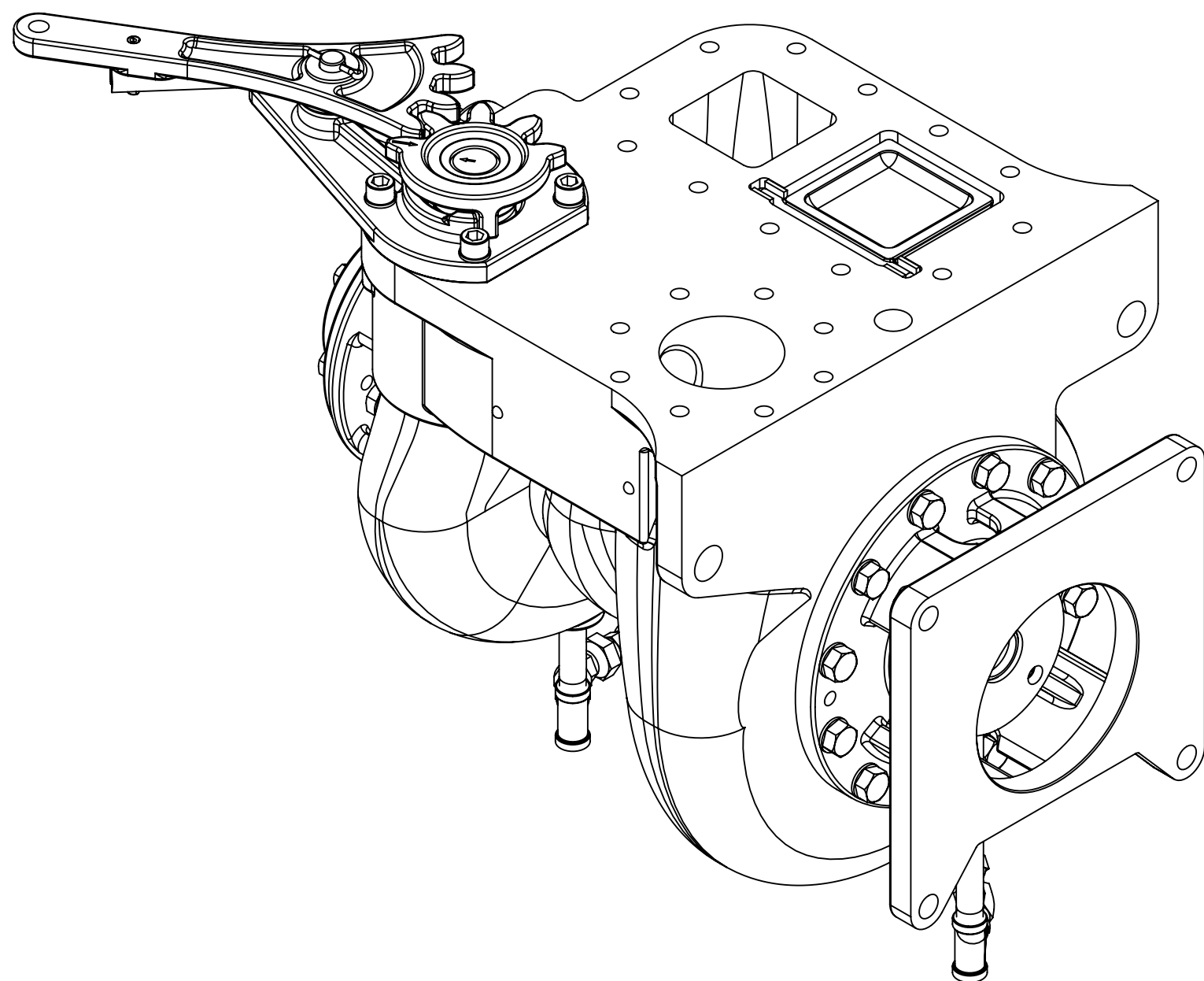
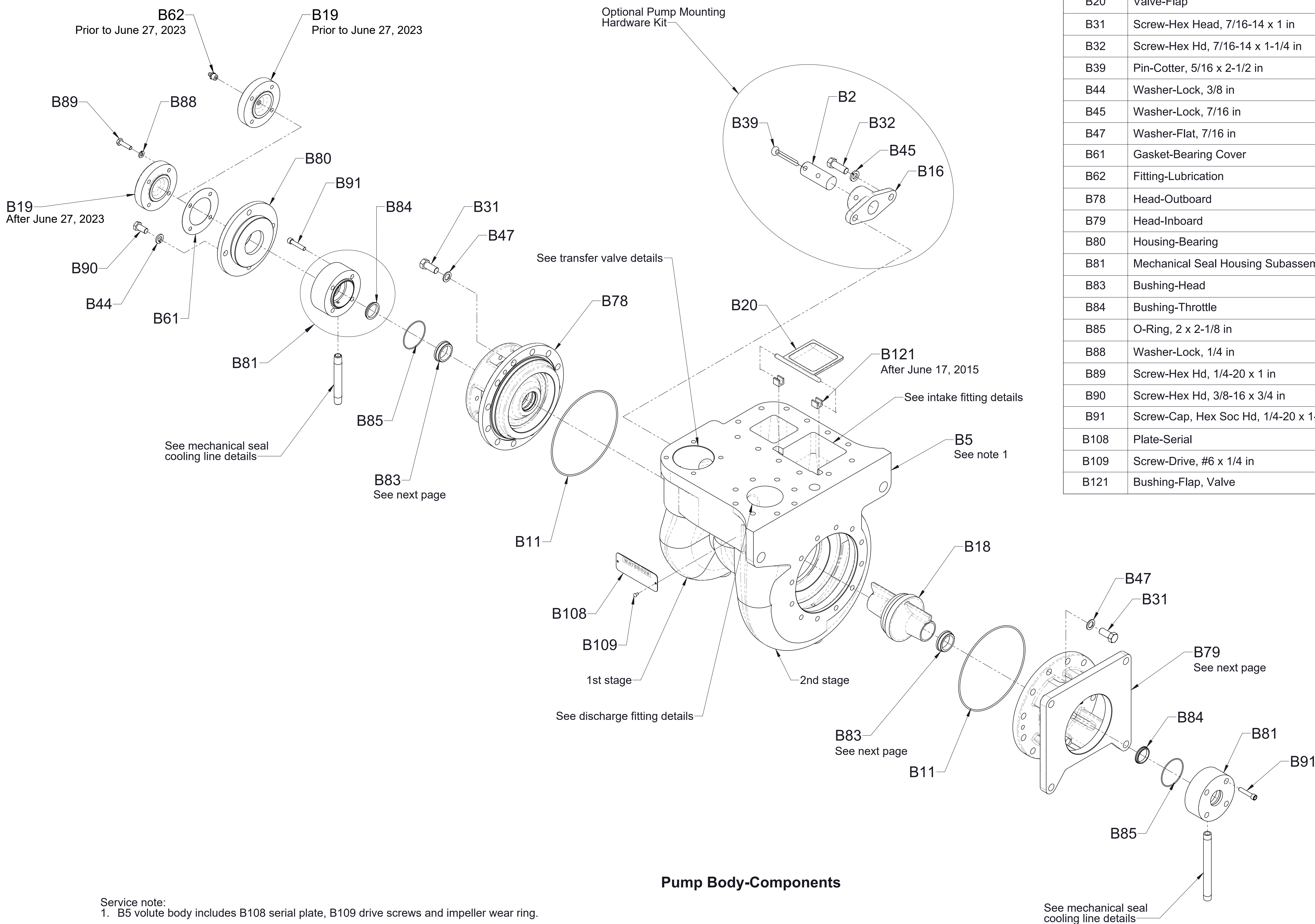


CP-3 Pump Body Service Parts List

Component		See Page
Pump Body	Components	2
	Head Bushing Installation	3
Transfer Valve	Components	4
	Panel Plates	5
Mechanical Seal Cooling Lines	Pumps Built After March 15, 1995	6
	Pumps Built Prior to March 15, 1995	7
Intake and Discharge Fittings		8



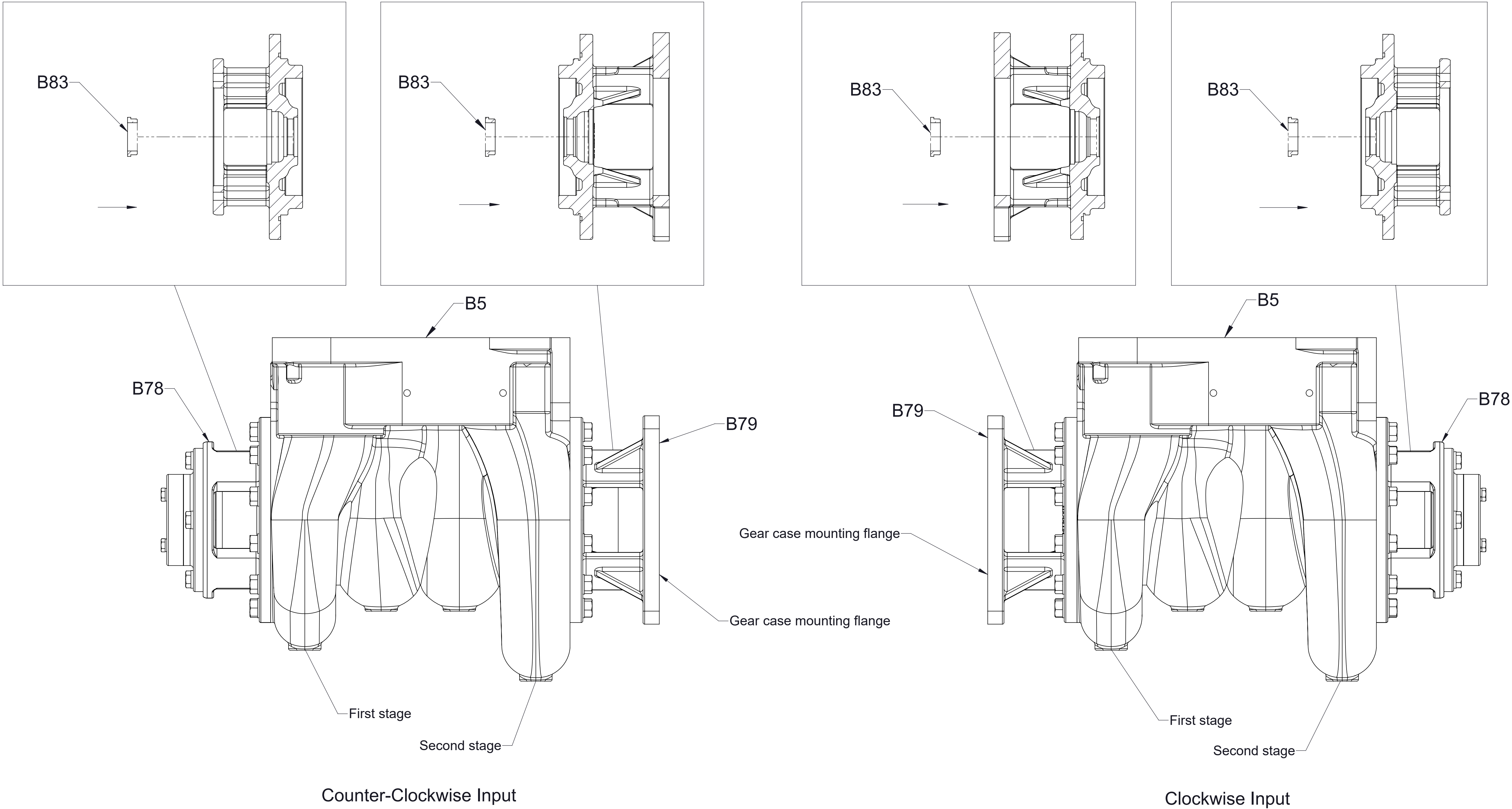


Ref No.	Description
B2	Pin-Suspension
B5	Body-Volute
B11	O-Ring, 6-1/4 x 6-7/16 in
B16	Bracket-Suspension
B18	Seal-Interstage
B19	Cover-Bearing, Housing
B20	Valve-Flap
B31	Screw-Hex Head, 7/16-14 x 1 in
B32	Screw-Hex Hd, 7/16-14 x 1-1/4 in
B39	Pin-Cotter, 5/16 x 2-1/2 in
B44	Washer-Lock, 3/8 in
B45	Washer-Lock, 7/16 in
B47	Washer-Flat, 7/16 in
B61	Gasket-Bearing Cover
B62	Fitting-Lubrication
B78	Head-Outboard
B79	Head-Inboard
B80	Housing-Bearing
B81	Mechanical Seal Housing Subassembly
B83	Bushing-Head
B84	Bushing-Throttle
B85	O-Ring, 2 x 2-1/8 in
B88	Washer-Lock, 1/4 in
B89	Screw-Hex Hd, 1/4-20 x 1 in
B90	Screw-Hex Hd, 3/8-16 x 3/4 in
B91	Screw-Cap, Hex Soc Hd, 1/4-20 x 1-1/4 in
B108	Plate-Serial
B109	Screw-Drive, #6 x 1/4 in
B121	Bushing-Flap, Valve

Pump Body-Components

Service note:
1. B5 volute body includes B108 serial plate, B109 drive screws and impeller wear ring.

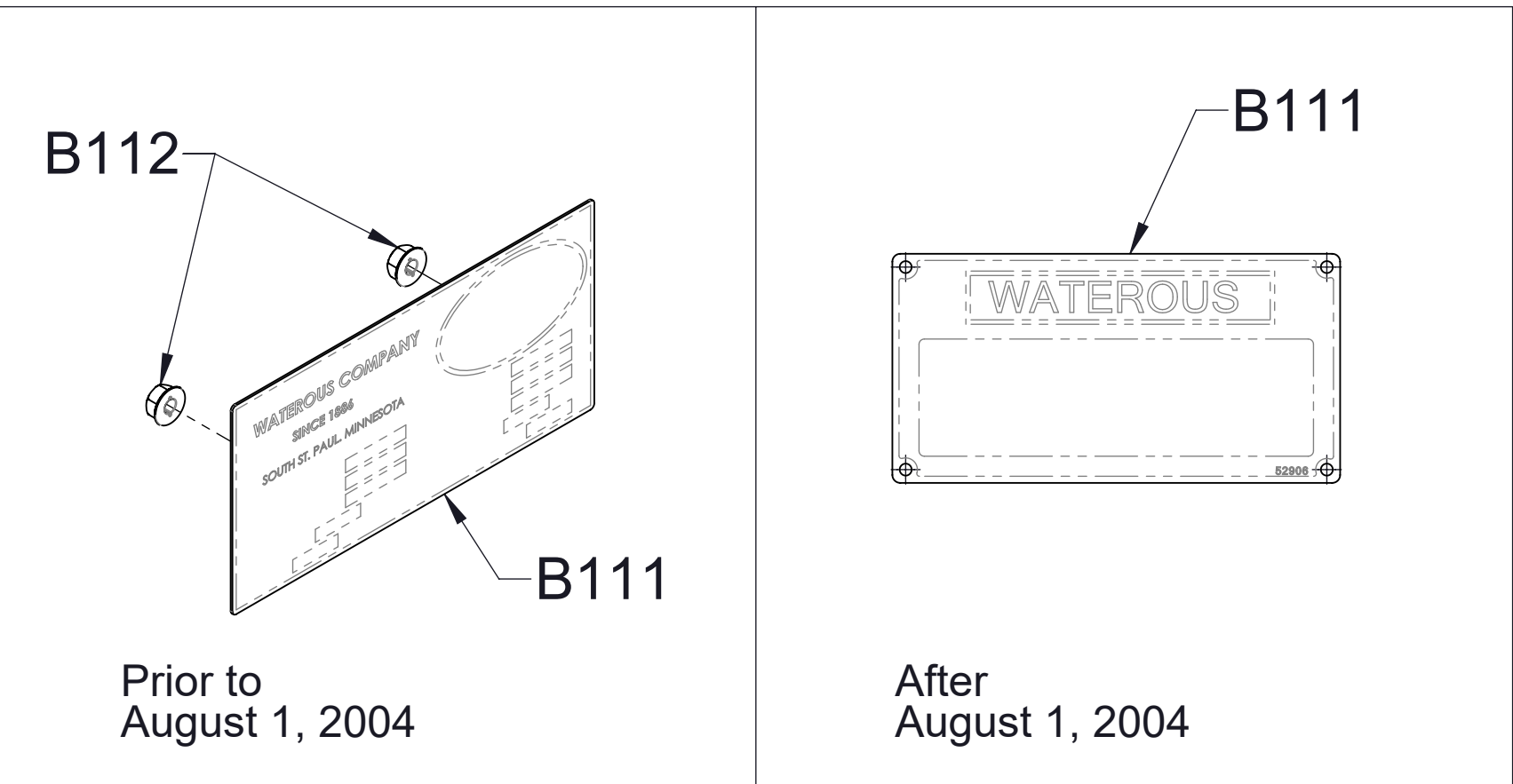
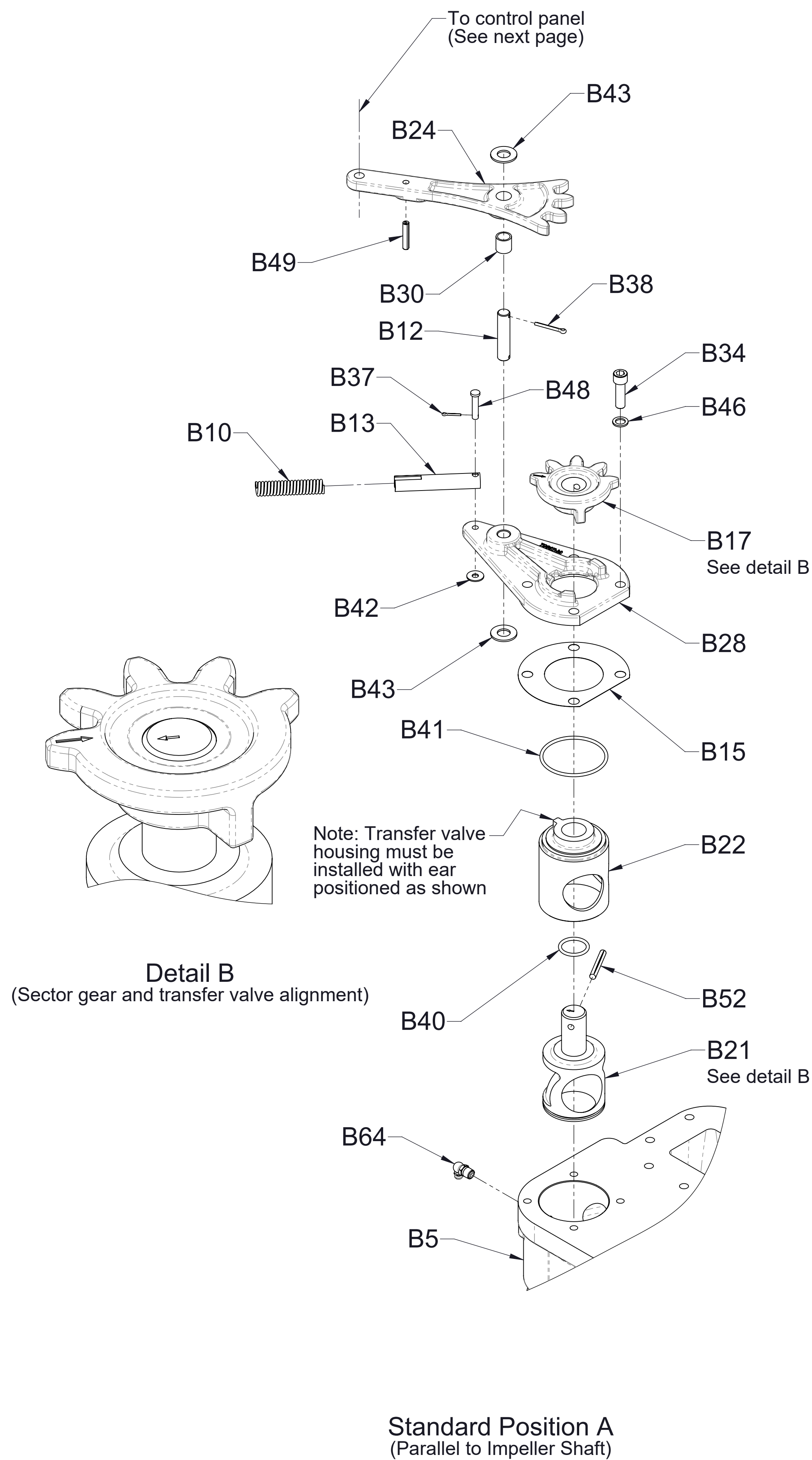
Ref No.	Description
B5	Body-Volute
B78	Head-Outboard
B79	Head-Inboard
B83	Bushing-Head



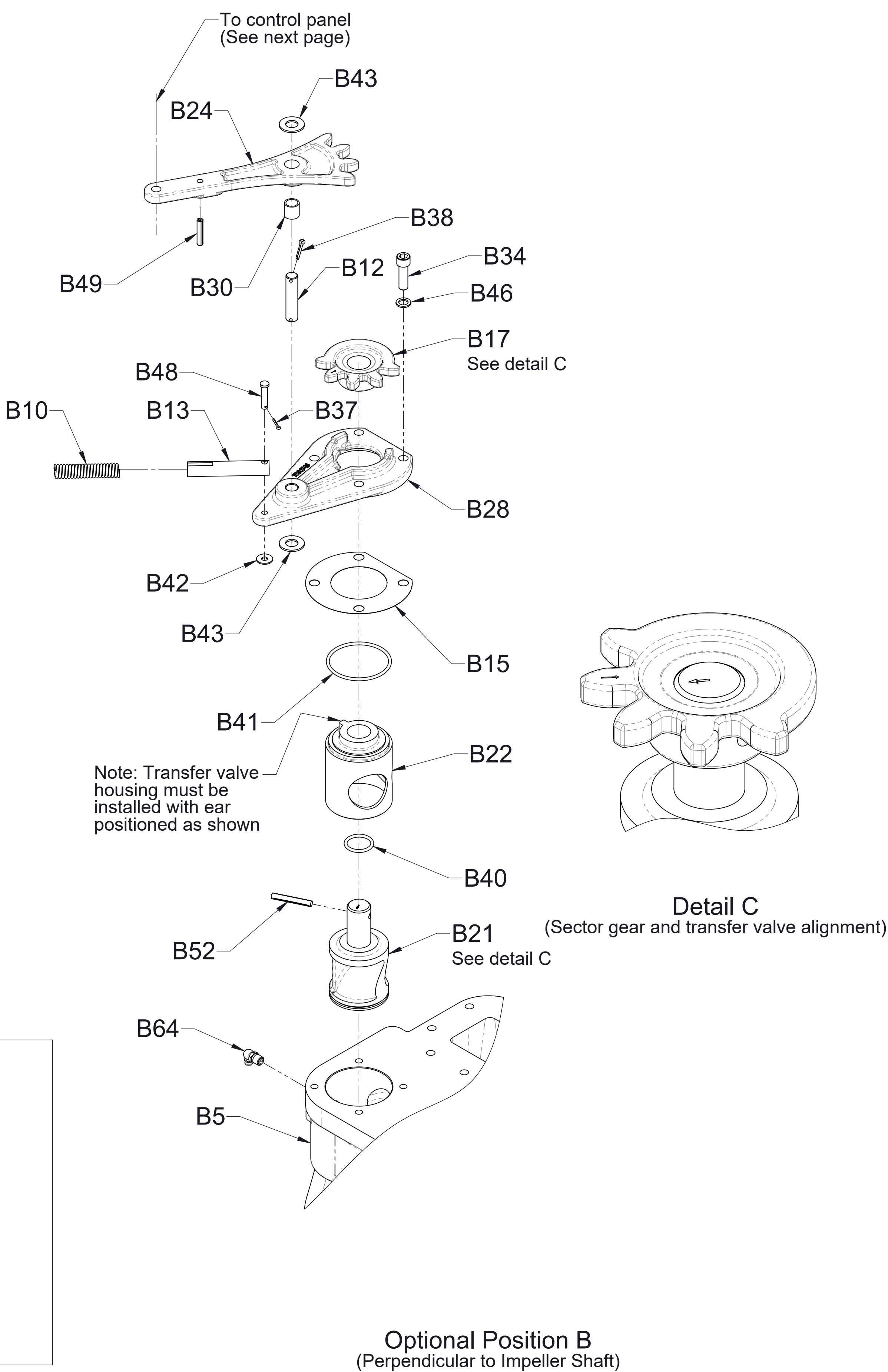
Pump Body-Head Bushing Installation

Head position and bushing installation based on gear case input rotation

Ref No.	Description
B5	Body-Volute
B10	Spring
B12	Pin-Pivot
B13	Housing-Spring, Transfer Valve
B15	Gasket-Transfer Valve Cover
B17	Gear-Sector
B21	Valve-Transfer
B22	Housing-Transfer Valve
B24	Arm Assembly-Manual Transfer Valve
B28	Cover-Manual Transfer Valve
B30	Bearing, Sleeve, Self-Lubricating
B34	Screw-Cap, Hex Soc Hd, 3/8-16 x 1-1/4 in
B37	Pin-Cotter, 5/64 x 1/2 in
B38	Pin-Cotter, 1/8 x 1 in
B40	O-Ring, 1 x 1-1/4 in
B41	O-Ring, 2-1/2 x 2-3/4 in
B42	Washer-Flat, 1/4 in
B43	Washer-Plain, 1/2 in
B46	Washer-Flat, 3/8 in
B48	Pin-Clevis, 1/4 x 1-1/4 in
B49	Pin-Spirol, 1/4 x 1-1/4 in
B52	Pin-Groove, 1/4 x 1-3/4
B64	Fitting-Lubrication, 1/8 NPT, Leakproof, 90°
B111	Plate-Serial
B112	Nut-Self Threading

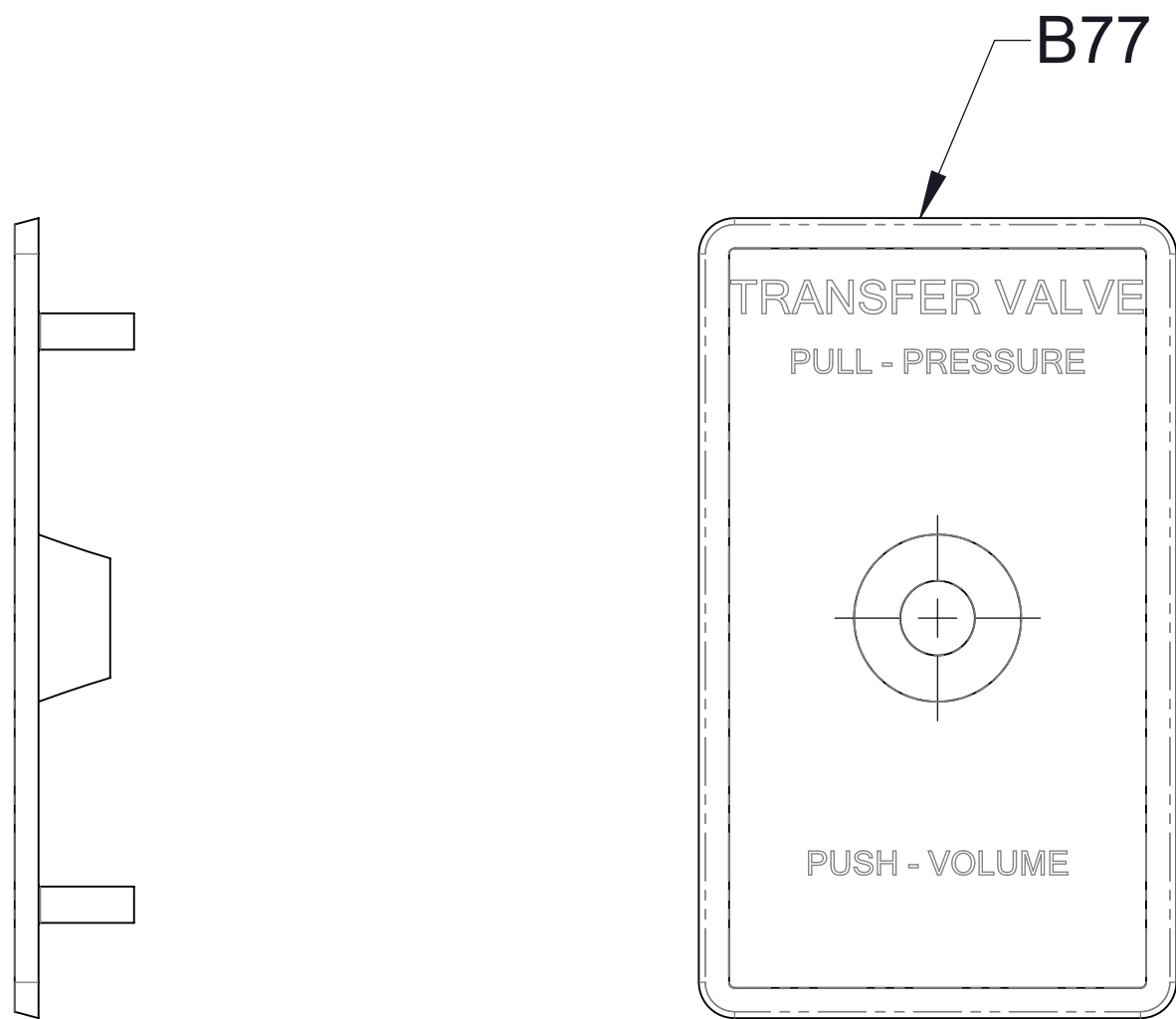
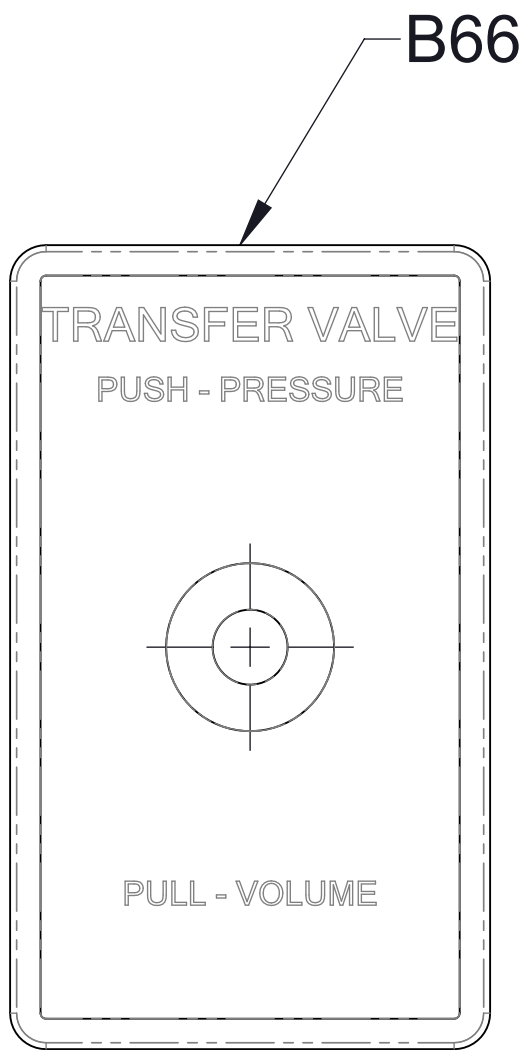
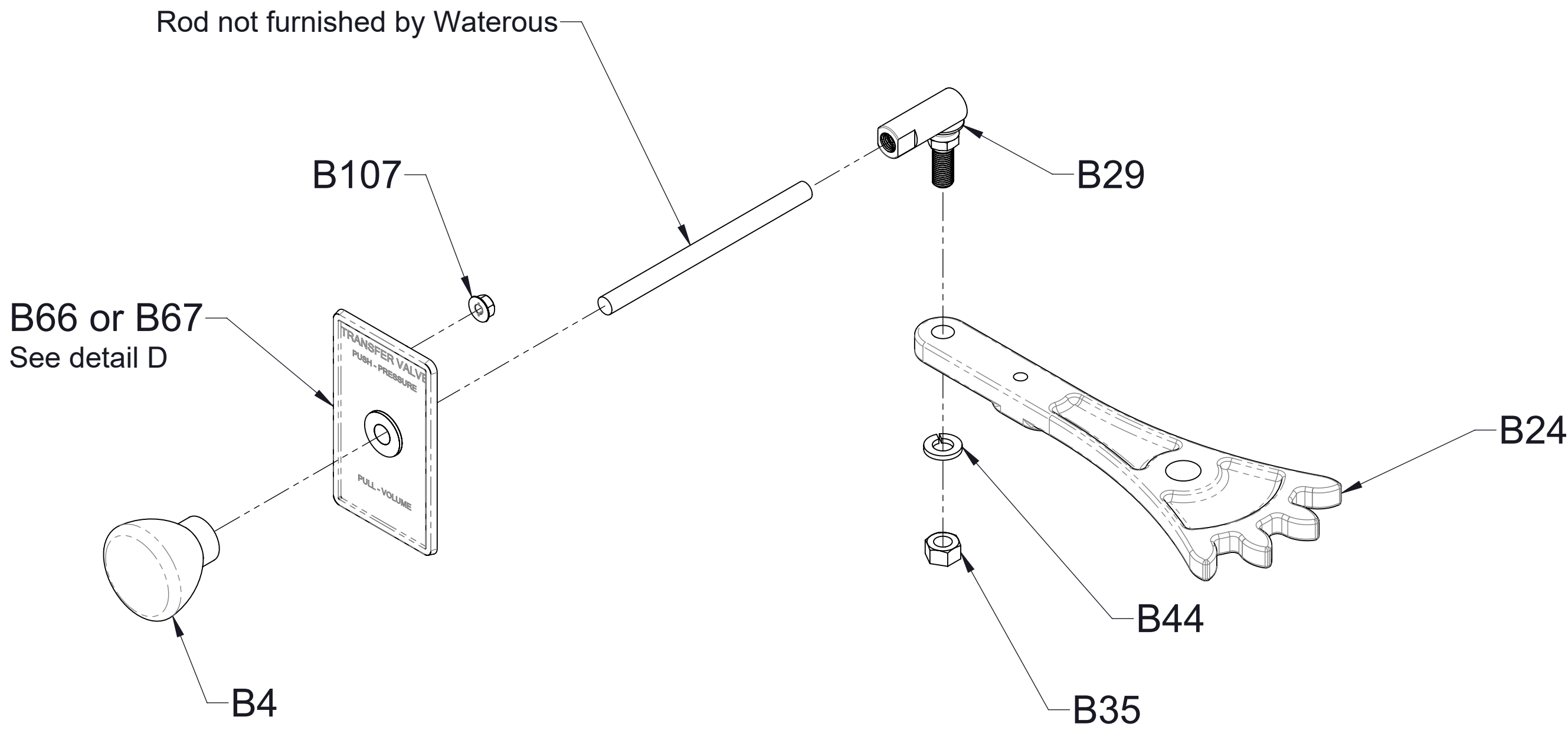


Serial plate mounted on operators panel



Optional Position B (Perpendicular to Impeller Shaft)

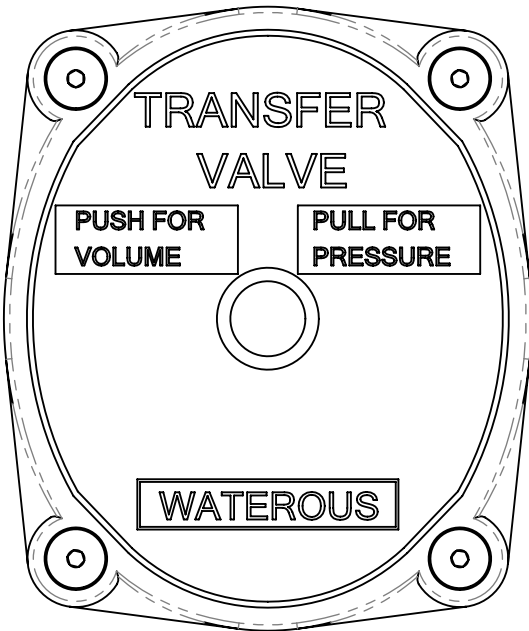
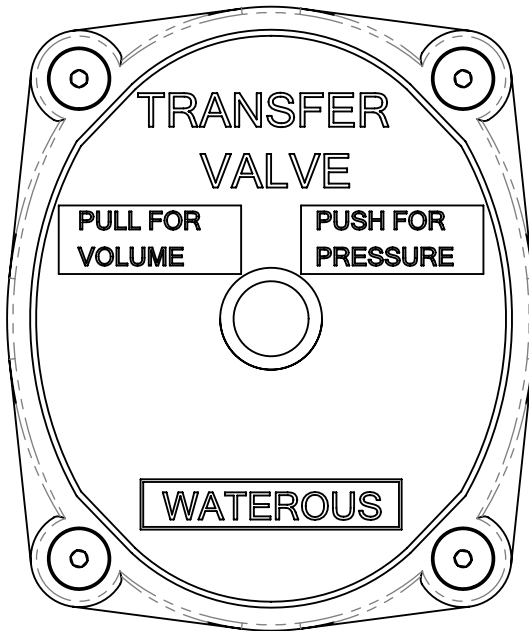
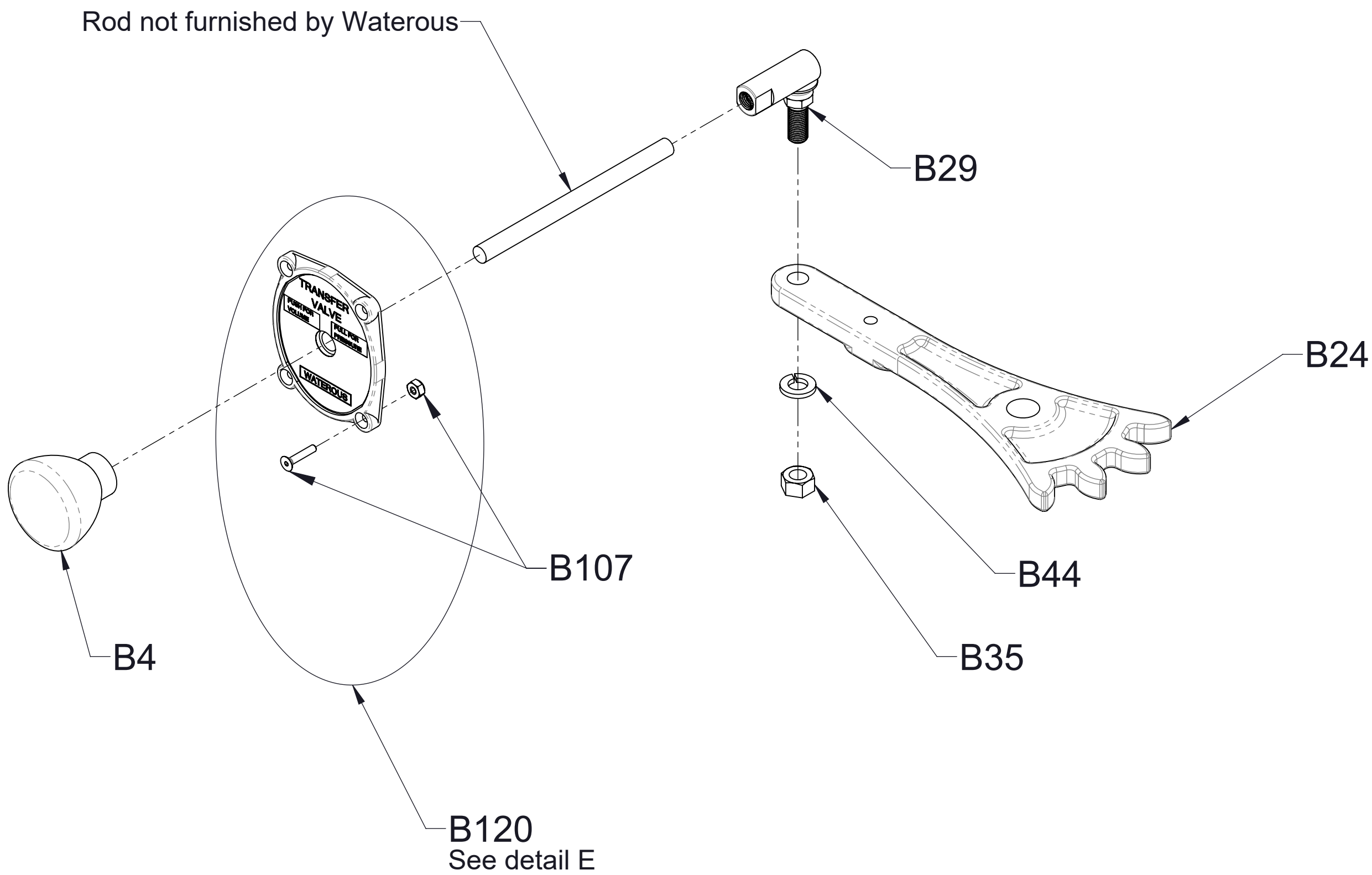
Ref No.	Description
B4	Knob-Drain Valve
B24	Arm Assembly-Manual Transfer Valve
B29	Ball Joint, 3/8-24
B35	Nut-Hex, 3/8-24
B44	Washer-Lock, 3/8 in
B66	Plate-Panel (Prior to April 21, 2006)
B77	Plate-Panel (Prior to April 21, 2006)
B107	Control Panel Hardware
B120	Control Panel (After April 21, 2006)



Detail D

Prior to April 21, 2006

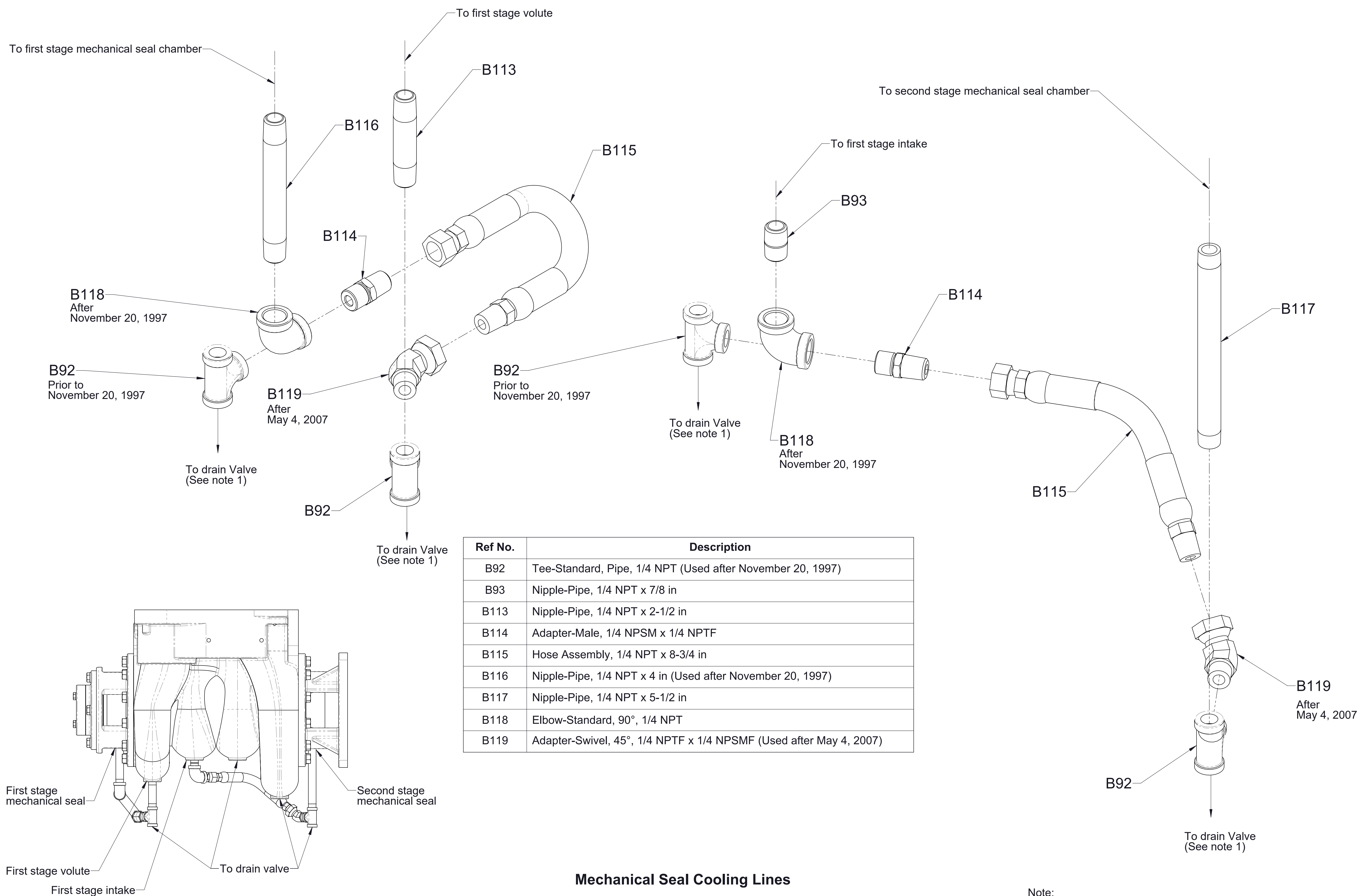
Note: Depending on installation of pump, either B66 or B77 is installed on panel.



Detail E

After April 21, 2006

Note: Depending on installation of pump, panel can be configured either way by using the correct label provided with control panel (B120).

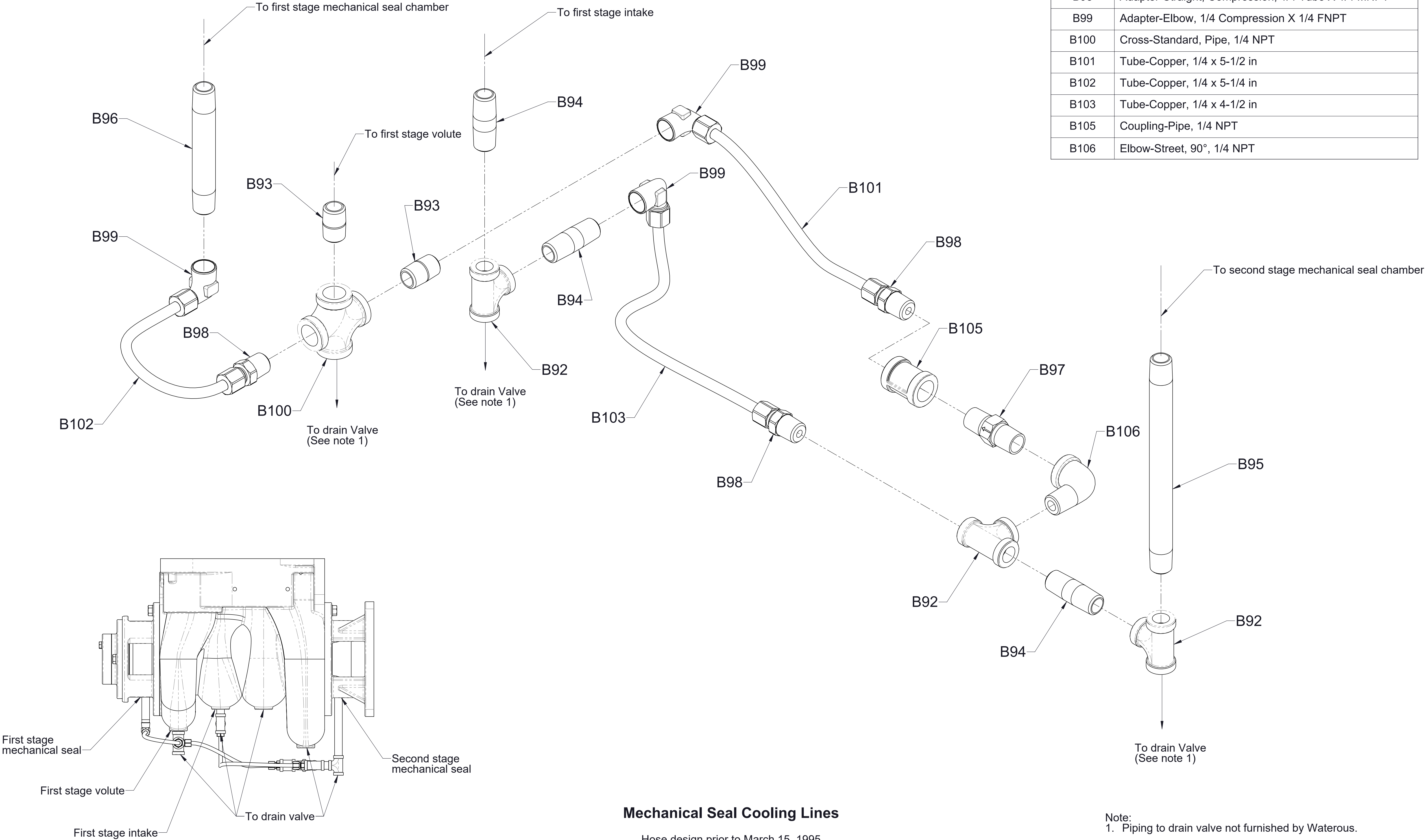


Cooling Line Configuration

Mechanical Seal Cooling Lines

Hose design used after March 15, 1995

Ref No.	Description
B92	Tee-Standard, Pipe, 1/4 NPT
B93	Nipple-Pipe, 1/4 NPT x 7/8 in
B94	Nipple-Pipe, 1/4 NPT x 1-1/2 in
B95	Nipple-Pipe, 1/4 NPT x 6 in
B96	Nipple-Pipe, 1/4 NPT x 3-1/2 in
B97	Valve-Check, 1/4 NPT
B98	Adapter-Straight, Compression, 1/4 Tube X 1/4 MNPT
B99	Adapter-Elbow, 1/4 Compression X 1/4 FNPT
B100	Cross-Standard, Pipe, 1/4 NPT
B101	Tube-Copper, 1/4 x 5-1/2 in
B102	Tube-Copper, 1/4 x 5-1/4 in
B103	Tube-Copper, 1/4 x 4-1/2 in
B105	Coupling-Pipe, 1/4 NPT
B106	Elbow-Street, 90°, 1/4 NPT

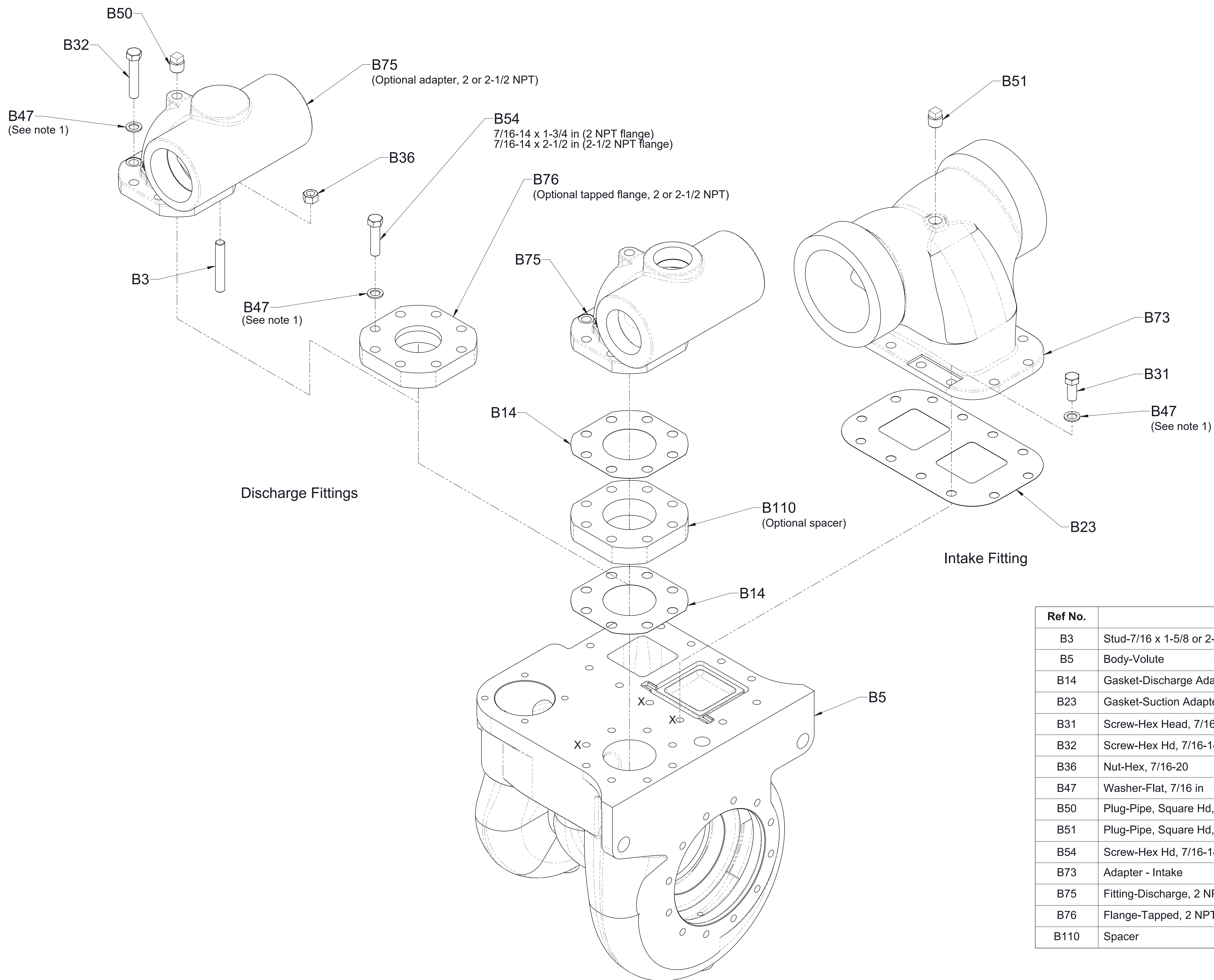


Mechanical Seal Cooling Lines

Hose design prior to March 15, 1995

Note:
1. Piping to drain valve not furnished by Waterous.

Cooling Line Configuration



Note:
1. Copper washers B47 are used only on volute body tapped holes marked "X".