



Document Number	Issue Date	Rev. Date
<b>SPL81965</b>	<b>12/21/93</b>	<b>5/11/18</b>

## CS Body Assembly Service Parts List

### CS '93 Body Styles

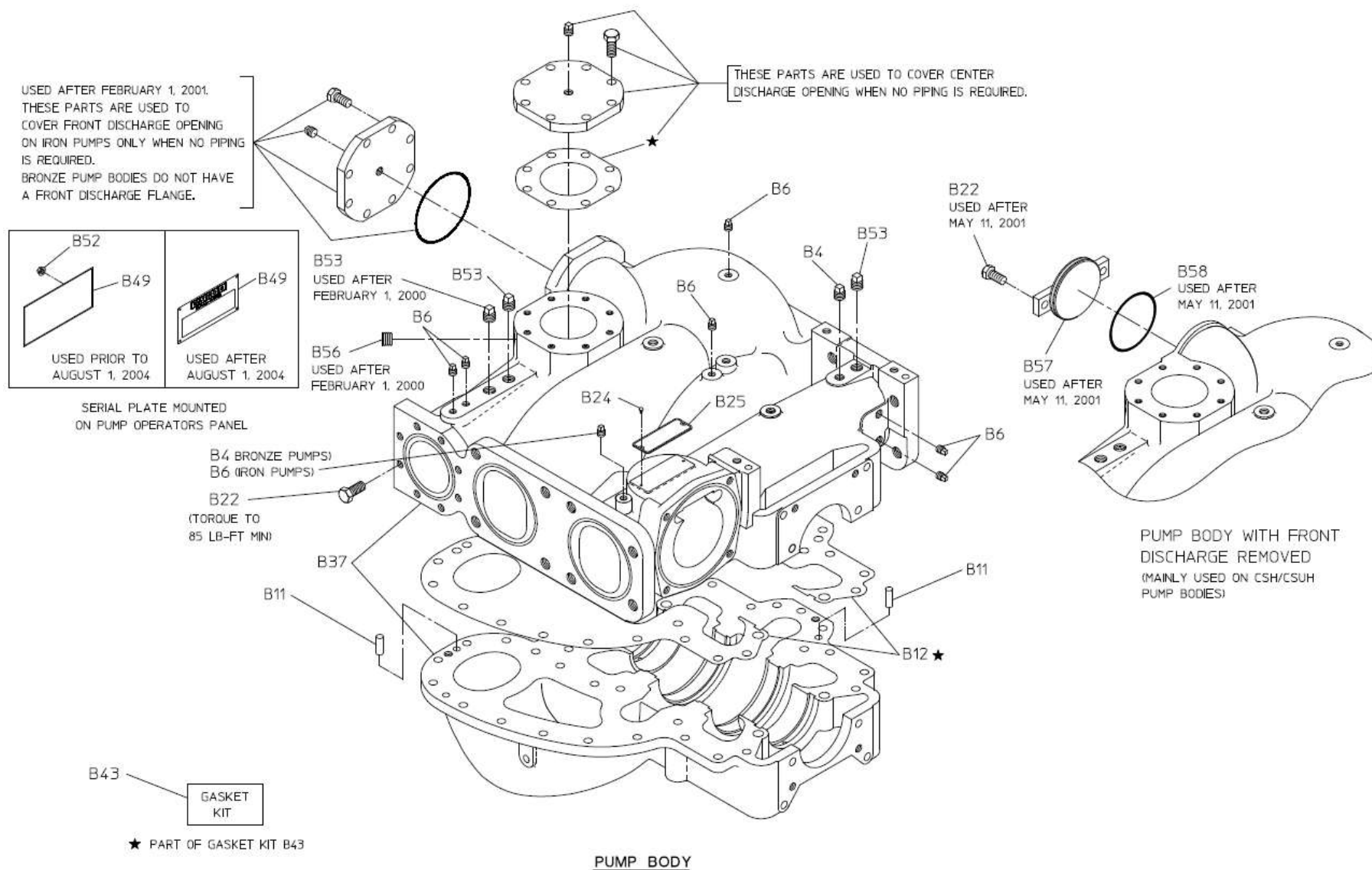
#### Index:

Pump Model	Component				See Page
CS, CSH, CSU, CSUH	Pump Body Halves	View of Body (Top Side)			2, 3
		View of Cover (Underside)			4, 5
	Intake Adapters	Left Side	CS, CSH	Standard	6, 7
			CSU, CSUH	Large	
				Large Rear	
		Right Side	CS, CSH	Standard	8, 9
				Standard Rear	
			CSU, CSUH	Large	
				Large Rear	
				Tank to Pump Connection	

### View of Body (Top Side)

REF NO.	DESCRIPTION
B4	Square Pipe Plug, 3/8 in.
B6	Square Pipe Plug, 1/4 in.
B11	Dowel Pin, 7/16 in. x 1-1/4 in.
B12	Gasket Set, Cover-to-Body
B22	Hex Hd Screw, 1/2-13 x 1-1/4 in.
B24	Round Hd Drive Screw, No. 6, 1/4 in.
B25	Serial Plate (Body Mounted)
B37	Body Assembly (Sold as Assembly Only – Consists of Volute Body and Volute Cover)

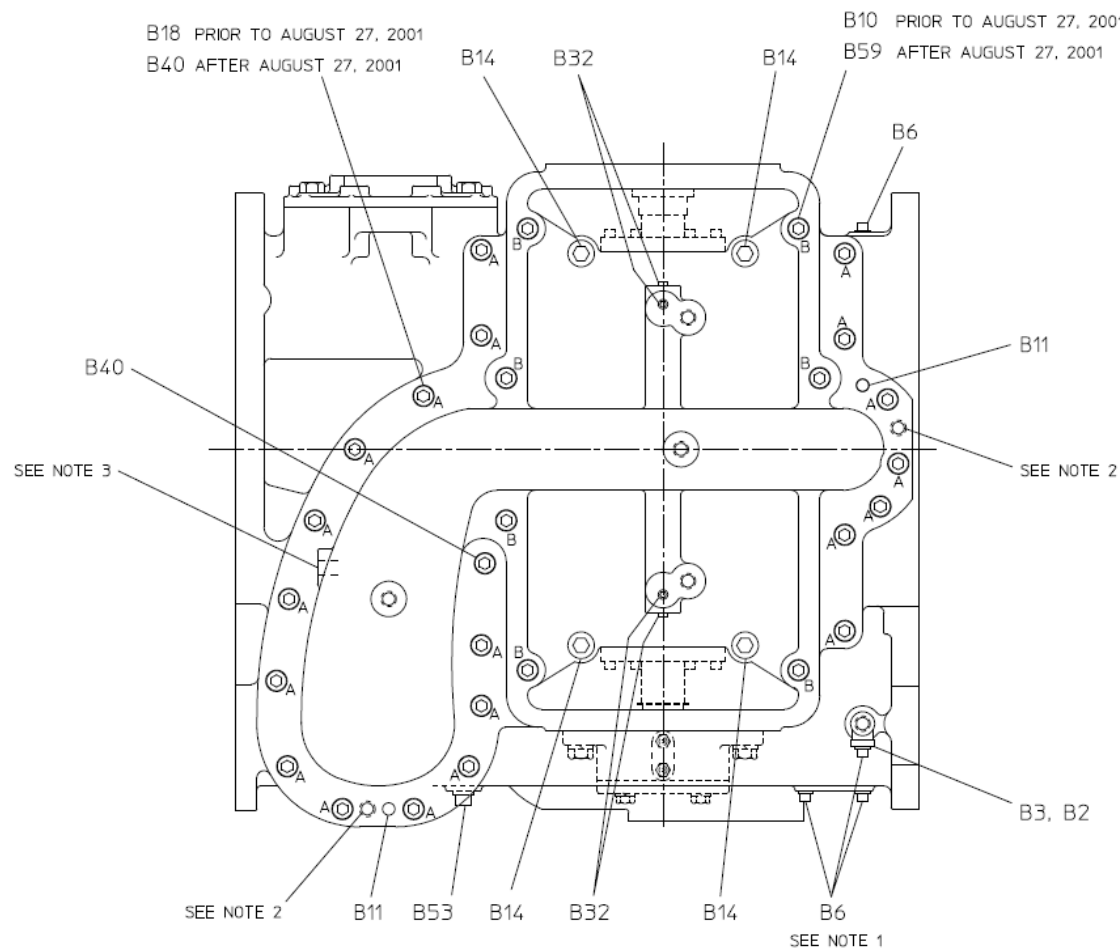
REF NO.	DESCRIPTION
B43	Gasket Kit (Consists of B7, B12, B26, B39 & B42)
B49	Serial Plate (Located on Operator's Panel)
B52	Self-threaded Nut
B53	Square Hd Pipe Plug, 1/2 in.
B56	Pipe Plug, 1/2 in. NPT Headless
B57	Front Discharge Plug
B58	O-ring, 3-3/4 x 4 in.



### View of Cover (Underside)

REF NO.	DESCRIPTION
B2	Pipe Tee, 1/4 in.
B3	Pipe Nipple, 1/4 in. x 1-1/2 in.
B6	Square Hd Pipe Plug, 1/4 in.
B10	Hex Hd Screw, 1/2-13 x 4-3/4 in.
B11	Dowel Pin, 7/16 in. x 1-1/4 in.
B14	Socket Hd Screw, 5/8-11 x 3 in. (used prior to May 3, 2002)
B14	Socket Hd Screw, 5/8-11 x 3-1/4 in. (used after May 3, 2002)

REF NO.	DESCRIPTION
B18	Hex Hd Screw, 1/2-13 x 1-1/2 in.
B32	Square Hd Pipe Plug or Hex Hd Pipe Plug, 1/8 NPT
B40	Socket Hd Screw, 1/2-13 x 1-1/2 in.
B53	Square Hd Pipe Plug, 1/2 in.
B59	Socket Hd Screw, 1/2-13 x 4-3/4 in.



FASTENER TYPE AND SIZE			
REF. NO.	DESCRIPTION	QTY	MINIMUM TORQUE
B10	HEX HEAD, 1/2-13 X 4-3/4	7	105 LB-FT
B14	SOCKET HEAD, 5/8-11 X 3 (USED PRIOR TO 5-03-02)	4	
	SOCKET HEAD, 5/8-11 X 3-1/4 (USED AFTER TO 5-03-02)	4	
B18	HEX HEAD, 1/2-13 X 1-1/2	20	
B40	SOCKET HEAD, 1/2-13 X 1-1/2	21	
B59	SOCKET HEAD, 1/2-13 X 4-3/4	7	

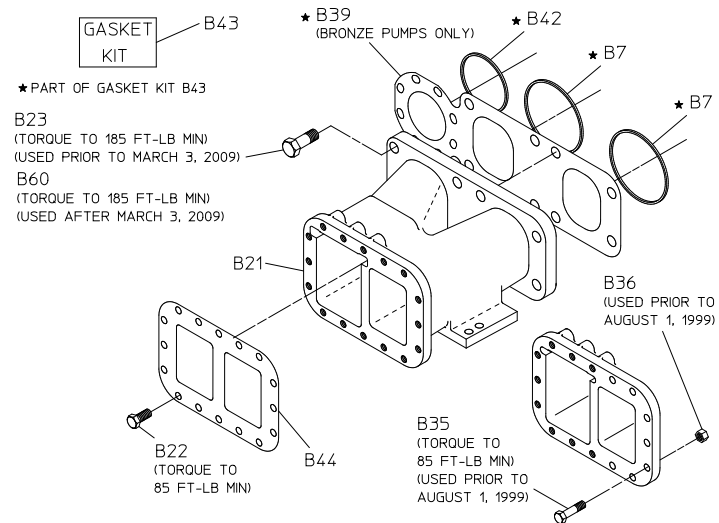
#### UNDERSIDE VIEW OF PUMP

- NOTES:
1. WATEROUS FURNISHES PUMP WITH B6 PIPE PLUGS INSTALLED IN THESE HOLES, BUT THE APPARATUS BUILDER MAY HAVE REMOVED THEM AND INSTALLED PIPING TO THE DRAIN VALVE.
  2. THESE ARE 1/2-13 UNC TAPPED HOLES TO ACCOMMODATE THE USE OF JACKING SCREWS DURING DISASSEMBLY.
  3. THIS IS AN UNTAPPED HOLE WHICH IS REQUIRED TO DRAIN A CORED POCKET IN THE COVER CASTING AND DOES NOT REQUIRE A PLUG.

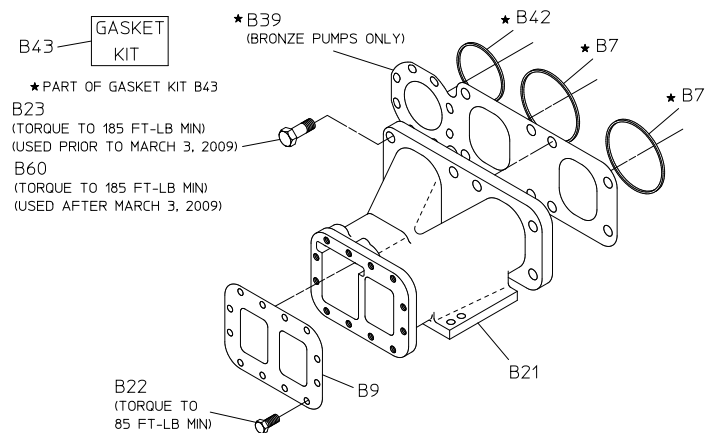
## Intake Adapters – Left Side

REF NO.	DESCRIPTION
B4	Square Hd Pipe Plug, 3/8 in.
B7	Intake Adapter Gasket
B9	Intake Fitting Gasket, Standard Intake Adapter
B21	Intake Adapter, LH
B22	Hex Hd Screw, 1/2-13 x 1-1/4 in.
B23	Hex Hd Screw, 3/4-10 x 2 in.
B31	Rear Intake Fitting Gasket
B34	Rear Intake Fitting
B35	Hex Hd Screw, 1/2-20 x 2 in.

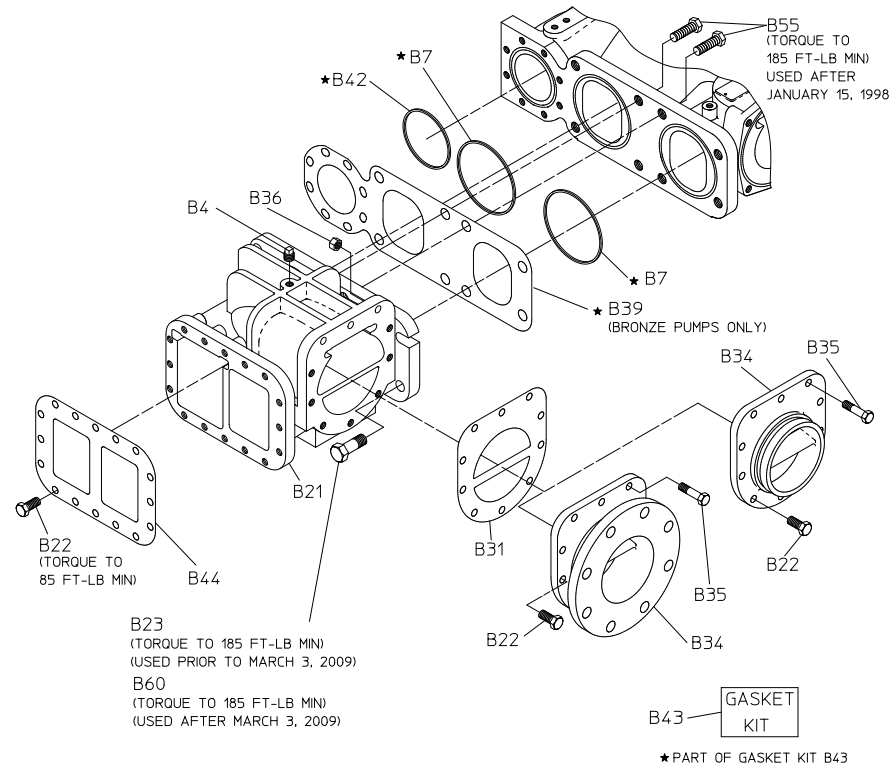
REF NO.	DESCRIPTION
B36	Hex Nut, 1/2-20
B39	Intake Flange Gasket (Bronze Body Only)
B42	Discharge Flange Gasket
B43	Gasket Kit (Consists of B7, B12, B26, B39, & B42)
B44	Intake Fitting Gasket, Large Intake Adapter
B55	Hex Hd Screw, 5/8-11 x 2 in.
B60	Socket Hd Screw, 3/4-10 x 1-3/4 with Threadlocker



#### LEFT SIDE LARGE INTAKE ADAPTER



#### LEFT SIDE STANDARD INTAKE ADAPTER



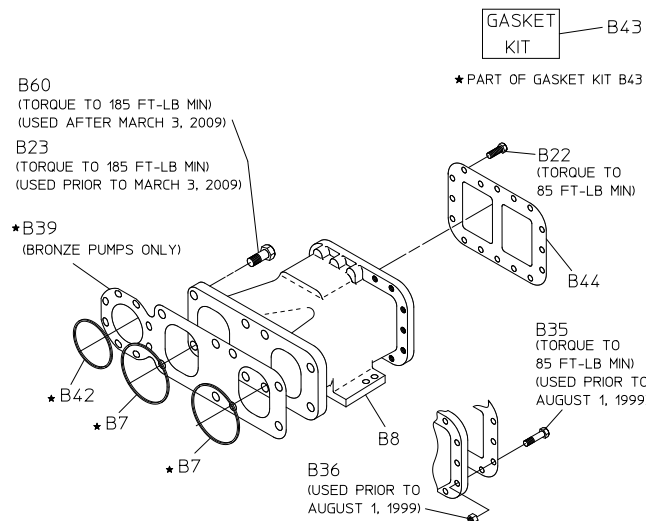
#### LEFT SIDE LARGE REAR INTAKE ADAPTER

## Intake Adapters – Right Side

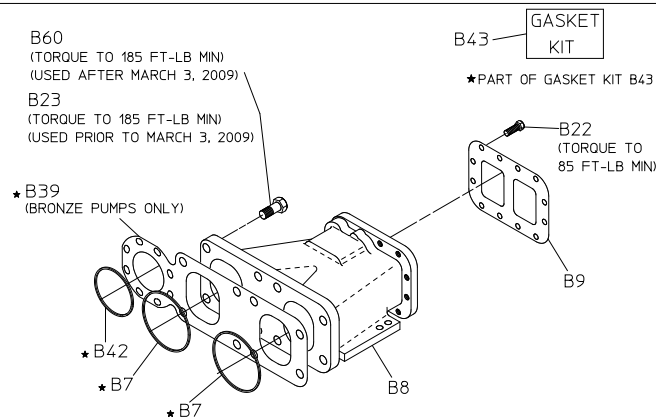
REF NO.	DESCRIPTION
B4	Square Hd Pipe Plug, 3/8 in.
B7	Intake Adapter Gasket
B8	Intake Adapter
B9	Intake Fitting Gasket, Standard Intake Adapter
B22	Hex Hd Screw, 1/2-13 x 1-1/4 in.
B23	Hex Hd Screw, 3/4-10 x 2 in.
B31	Rear Intake Fitting Gasket
B34	Rear Intake Fitting
B35	Hex Hd Screw, 1/2-20 x 2 in.

REF NO.	DESCRIPTION
B36	Hex Nut, 1/2-20
B39	Intake Flange Gasket (Bronze Body Only)
B42	Discharge Flange Gasket
B43	Gasket Kit (Consists of B7, B12, B26, B39, & B42)
B44	Intake Fitting Gasket, Large Intake Adapter
B55	Hex Hd Screw, 5/8-11 x 2 in.
B60	Socket Hd Screw, 3/4-10 x 1-3/4 with Threadlocker

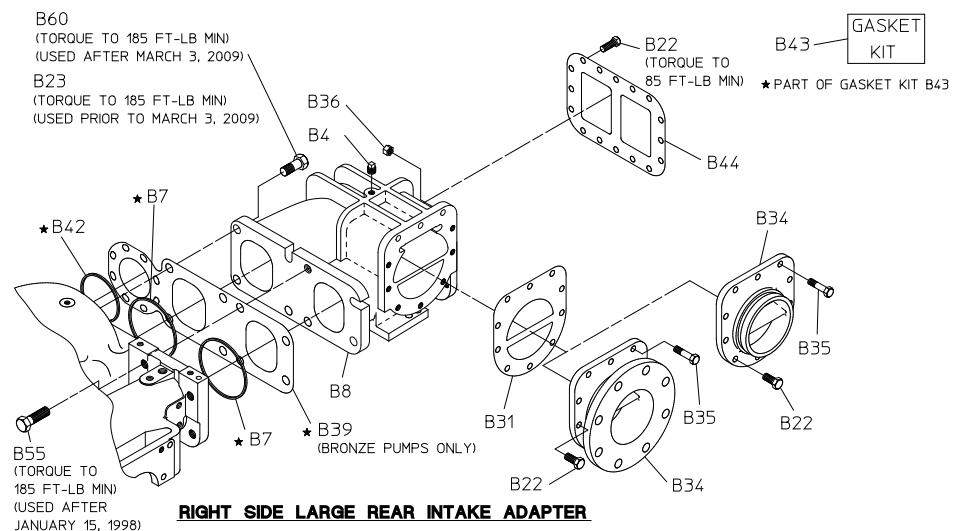




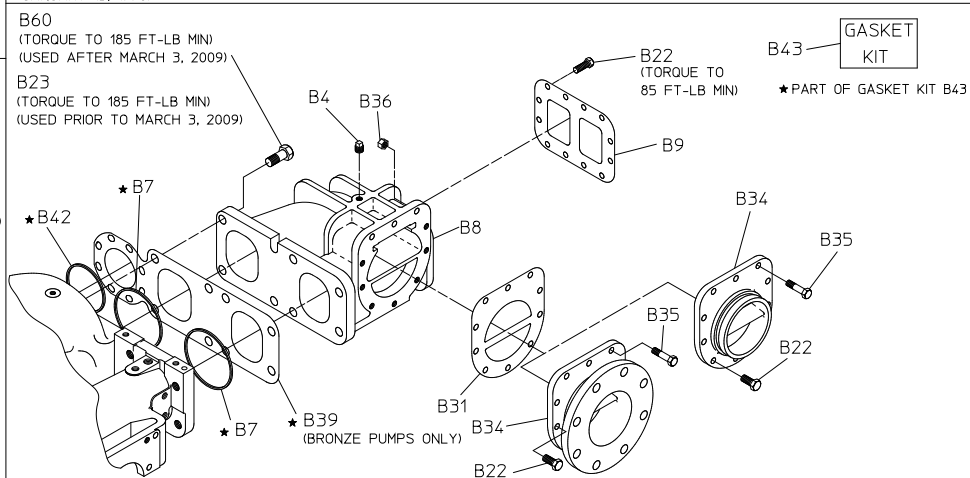
**RIGHT SIDE LARGE INTAKE ADAPTER**



**RIGHT SIDE STANDARD INTAKE ADAPTER**



**RIGHT SIDE LARGE REAR INTAKE ADAPTER**



**RIGHT SIDE STANDARD REAR INTAKE ADAPTER**

## Tank to Pump Connection

REF NO.	DESCRIPTION
B19	Tank to Pump Adapter (2-1/2 in. NPT, 3 in. NPT or 4 in. ANSI)
B20	Blind Flange
B22	Hex Hd Screw, 1/2-13 x 1-1/4 in.
B26	O-ring, 6-3/4 in. x 7 in.
B27	Tank to Pump Check Valve
B37	Body Assembly (Sold as Assembly Only – Consists of Volute Body and Volute Cover)

REF NO.	DESCRIPTION
B43	Gasket Kit (Consists of B7, B12, B26, B39 and B42)
B54	Check Valve Bushing

