



| | | |
|-----------------|-----------------|-----------------|
| Document Number | Issue Date | Rev. Date |
| SPL82515 | 08/06/04 | 11/18/14 |

Piston Primer Service Parts List

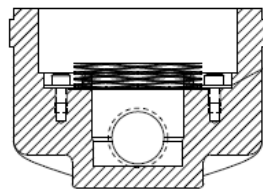
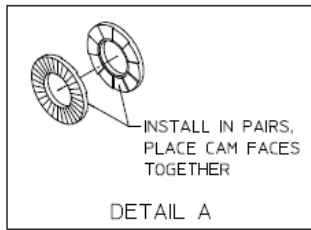
Index:

| Spring Design | Build Date | See Pages |
|----------------------|-------------------------------|-----------|
| Coil and Wave Spring | After November 10, 2014 | 2, 3 |
| All Coil Springs | Prior to November 10, 2014 | 4, 5 |

Piston Primer Configuration Prior to November 10, 2014

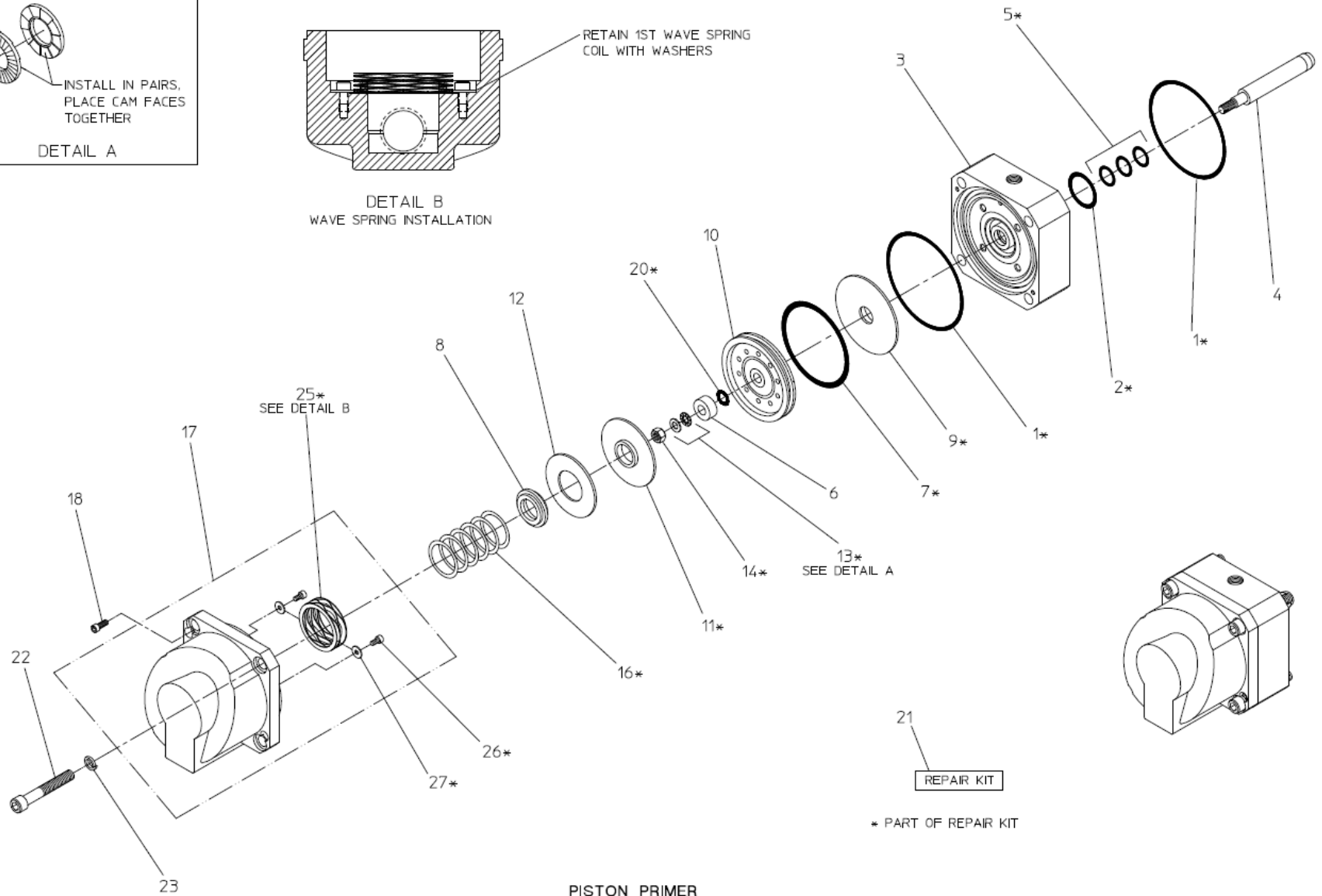
| REF. NO. | DESCRIPTION |
|-------------|---|
| 1 | O-ring, 3-3/4 x 4 in. |
| 2 | O-ring, 1-3/16 x 1-7/16 in. |
| 3 | Internal/External Plumbing Piston Guide |
| 4 | Piston Shaft |
| 5 | Quad Ring, 5/8 x 13/16 in |
| 6 | Centering Ring |
| 7 | Quad Ring, 3-1/8 x 3-1/2 in. |
| 8 | Spring Seat |
| 9 | Intake Diaphragm |
| 10 | Piston Primer |
| 11 | Exhaust Diaphragm |
| 12 | Sealing Disc |

| REF. NO. | DESCRIPTION |
|-------------|--|
| 13 | Nord-Lock® Washer, 8 mm |
| 14 | Nylock Nut, M8-1.25 |
| 16 | Compression Spring |
| 17 | Primer Body Subassembly |
| 18 | Socket Hd Screw, M5-0.8 x 12 mm |
| 20 | O-ring, 3/8 x 1/2 in. |
| 21 | Repair Kit (Includes 1, 2, 5, 7, 9, 11, 13, 14, 15, 16, 20, 25, 26 and 27) |
| 22 | Socket Hd Screw, M10-1.5 x 65 mm |
| 23 | High Collar Lock Washer, 10 mm |
| 25 | Wave Spring |
| 26 | Socket Hd Screw, M5-0.8 x 8mm |
| 27 | Flat Washer, M5 |



DETAIL B
WAVE SPRING INSTALLATION

RETAIN 1ST WAVE SPRING
COIL WITH WASHERS

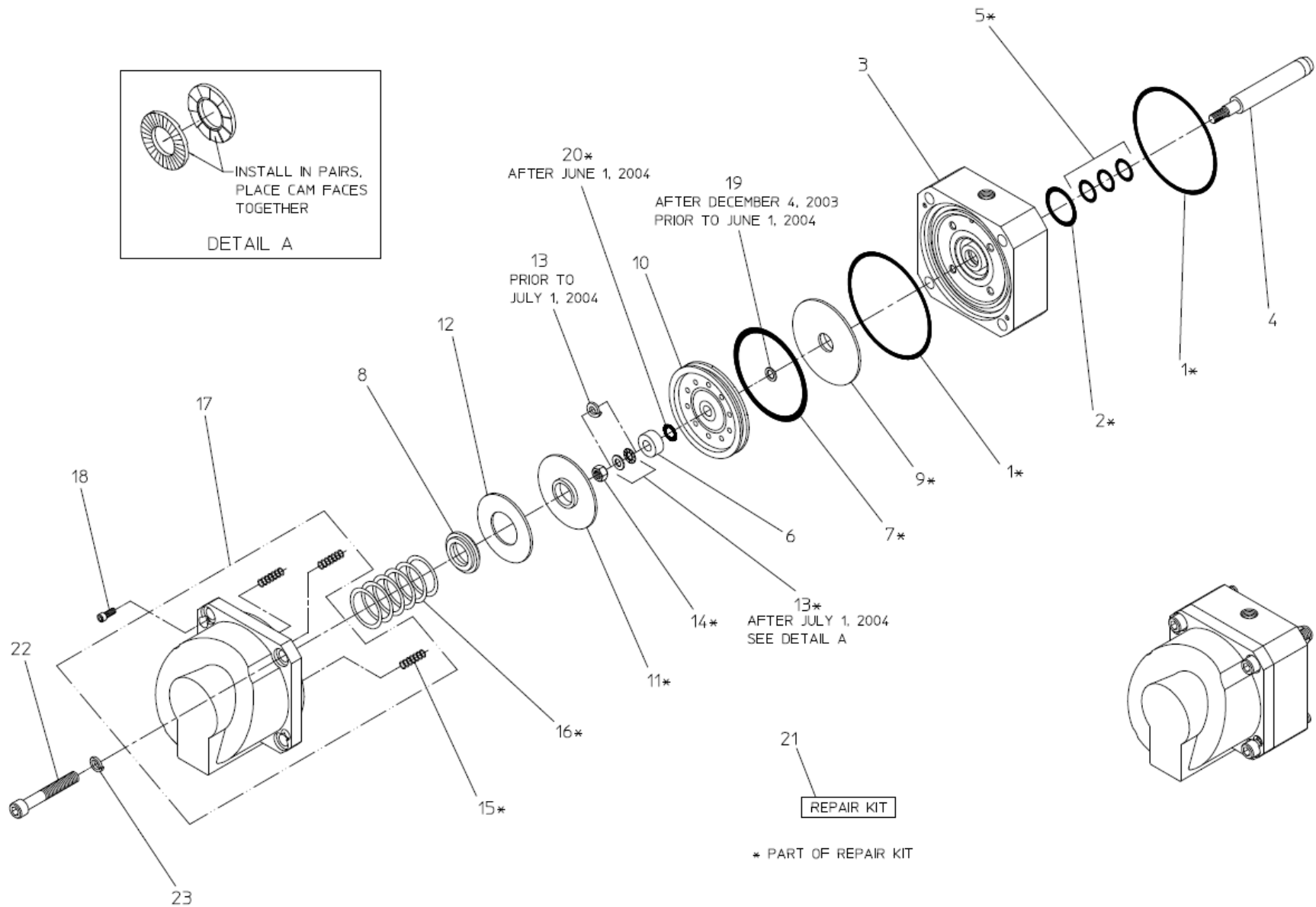


PISTON PRIMER
CONFIGURATION AFTER NOVEMBER 10, 2014

Piston Primer Configuration After November 10, 2014

| REF. NO. | DESCRIPTION |
|-------------|---|
| 1 | O-ring, 3-3/4 x 4 in. |
| 2 | O-ring, 1-3/16 x 1-7/16 in. |
| 3 | Internal/External Plumbing Piston Guide |
| 4 | Piston Shaft |
| 5 | Quad Ring, 5/8 x 13/16 in |
| 6 | Centering Ring |
| 7 | Quad Ring, 3-1/8 x 3-1/2 in. |
| 8 | Spring Seat |
| 9 | Intake Diaphragm |
| 10 | Piston Primer |
| 11 | Exhaust Diaphragm |
| 12 | Sealing Disc |

| REF. NO. | DESCRIPTION |
|-------------|--|
| 13 | Nord-Lock® Washer, 8 mm |
| 14 | Nylock Nut, M8-1.25 |
| 15 | Compression Spring, .36 x .75 |
| 16 | Compression Spring |
| 17 | Primer Body Subassembly |
| 18 | Socket Hd Screw, M5-0.8 x 12 mm |
| 19 | Spacer |
| 20 | O-ring, 3/8 x 1/2 in. |
| 21 | Repair Kit (Includes 1, 2, 5, 7, 9, 11, 13, 14, 15, 16 and 20) |
| 22 | Socket Hd Screw, M10-1.5 x 65 mm |
| 23 | High Collar Lock Washer, 10 mm |



PISTON PRIMER

CONFIGURATION PRIOR TO NOVEMBER 10, 2014