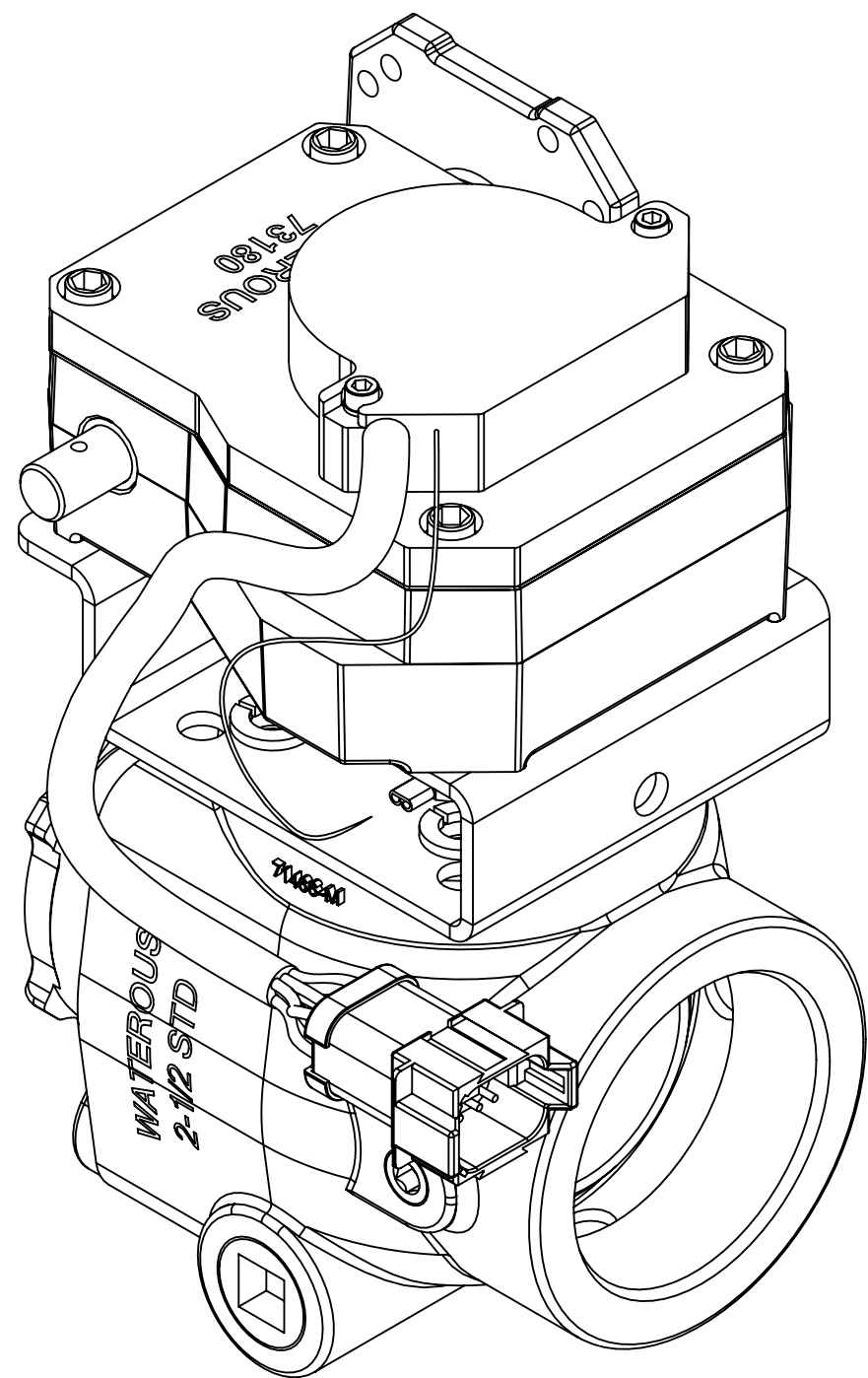
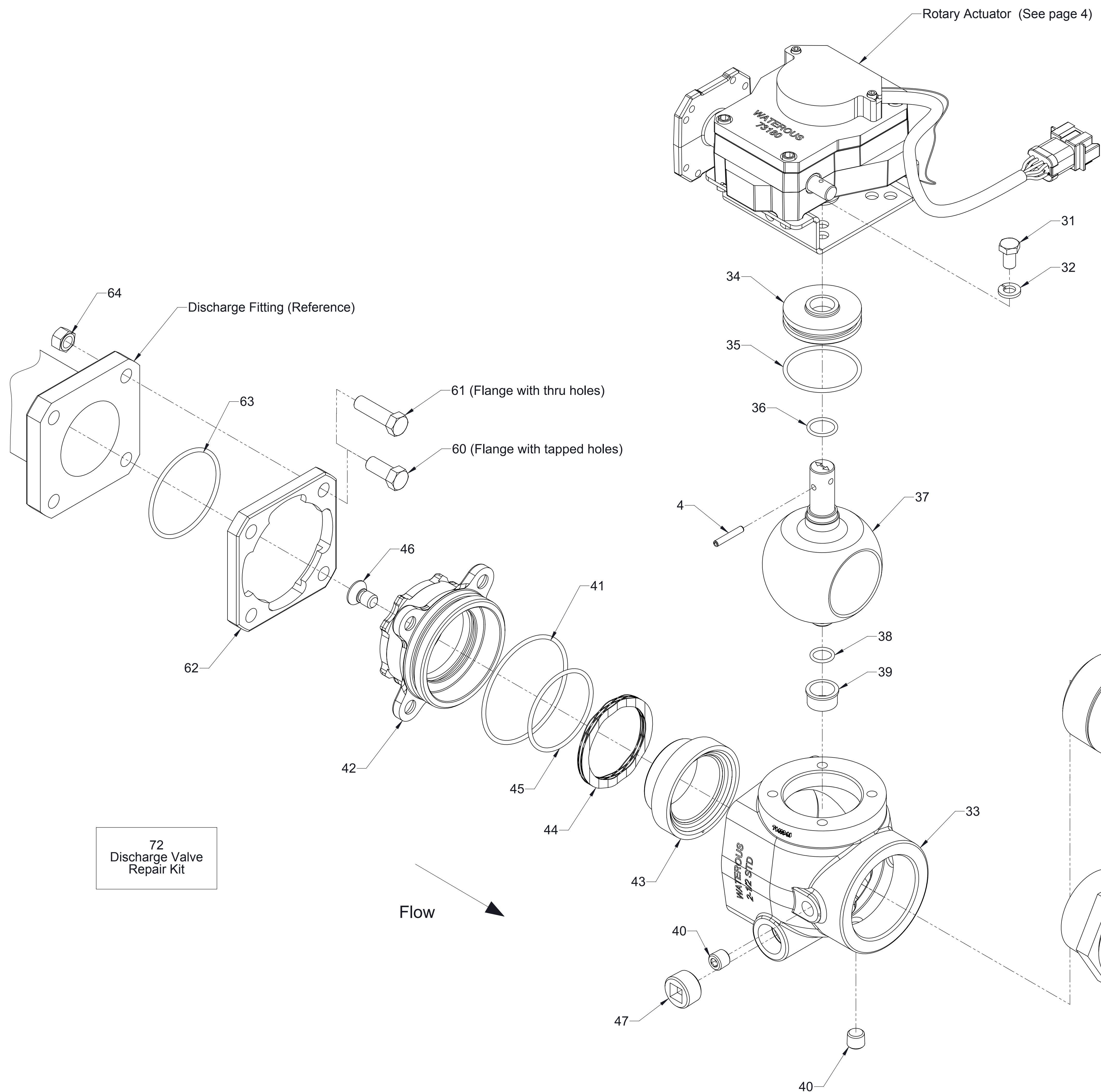


2-1/2 in. Standard Discharge Valve Assembly with Manual Rotary Actuator

Service Parts List

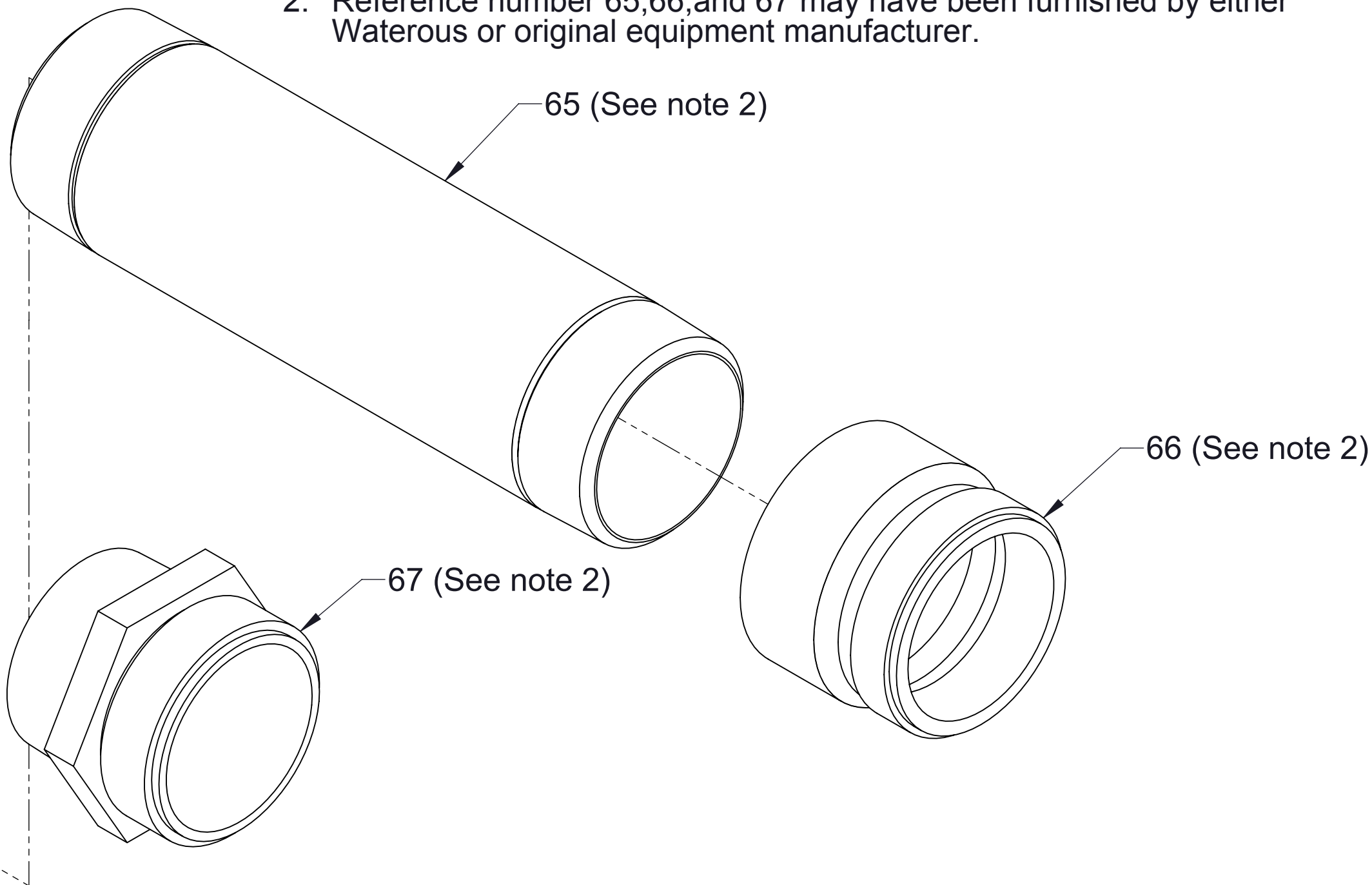
Components	See Page
2-1/2 in. Standard Ball Valve	2
Cables and Panel Components	3
Available Repair Subassemblies	4





Ref No.	Description
4	Pin-Spring, 3/16 x 1-1/8 in
31	Screw-Hex Hd, 3/8-16 x 5/8 in
32	Washer-Lock, 3/8 in
33	Body-Valve, Discharge
34	Bushing-Stem, Upper
35	O-Ring, 2-1/8 x 2-3/8 in
36	O-Ring, 3/4 x 15/16 in
37	Ball-Discharge Valve
38	O-Ring, 9/16 x 3/4 in
39	Bushing-Lower Stem
40	Plug-Pipe, Headless, 1/4 NPT
41	O-Ring, 3-3/8 x 3-5/8 in
42	Retainer-Seal, 2-1/2 Standard
43	Seal-Valve, Ball
44	Spring-Wave
45	O-Ring, 2-1/2 x 2-3/4 in
46	Screw-Machine, Flat Head Socket, 7/16-14 x 3/4 in
47	Plug-Pipe, Headless, 3/4 NPT
60	Screw-Hex Hd, 7/16-14 x 1 in (See note 1)
61	Screw-Hex Hd, 7/16-20 x 1-1/2 in
62	Flange-Mounting
63	O-Ring, 2-3/4 x 3 in
64	Nut-Hex, 7/16-20 (Used only with 61)
65	Nipple-Pipe, 2-1/2 NPT x 10 in (See note 2)
66	Adapter-Hose, 2-1/2 (See note 2)
67	Nipple-Hose, 2-1/2 Double Male (See note 2)
72	Discharge Valve Repair Kit

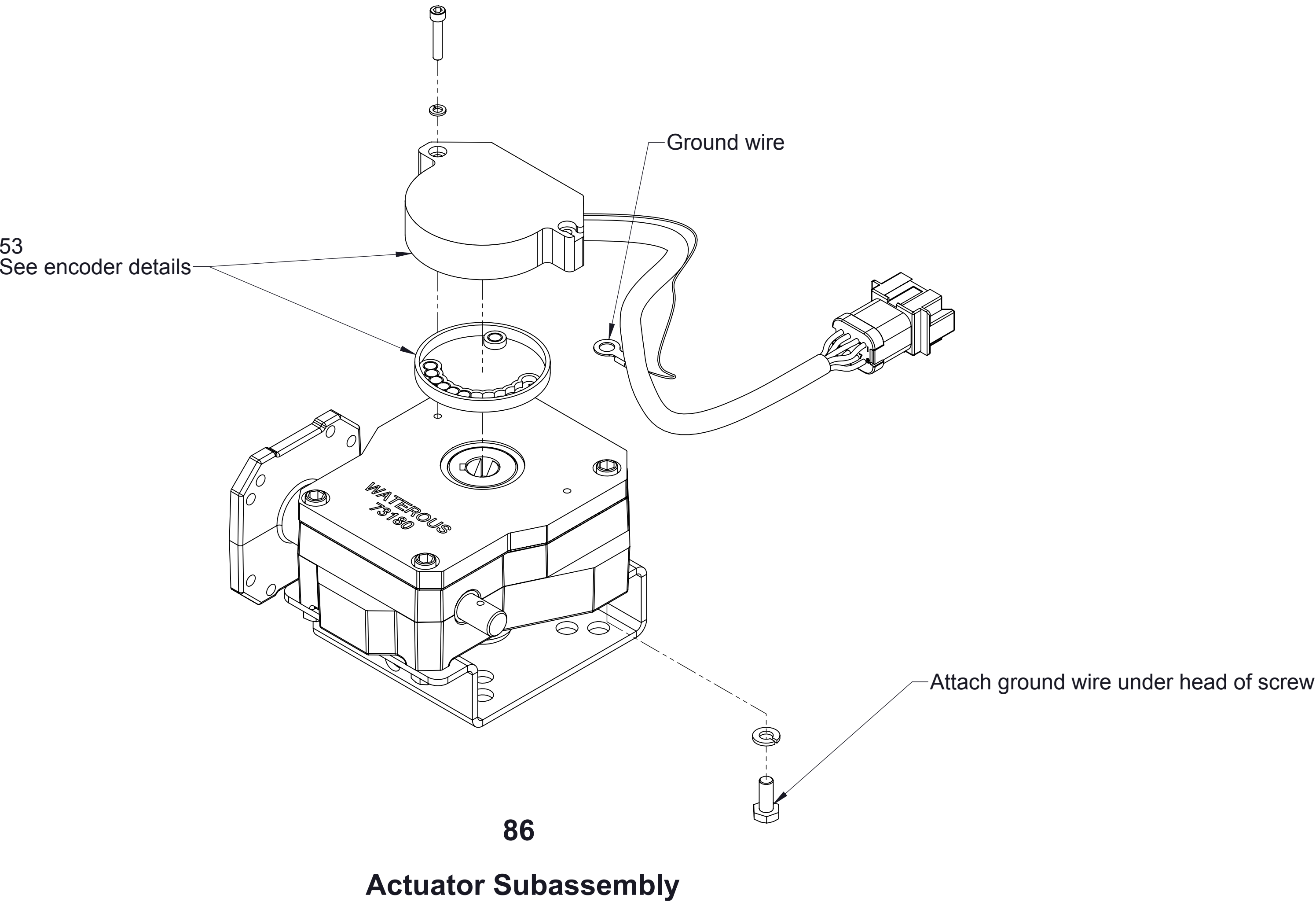
Notes:  
1. Reference number 60, Hex Hd Screw, 7/16-14 x 1 in. used instead of reference number 61, Hex Hd Screw, 7/16-20 x 1-1/2 in. when discharge flange has tapped mounting holes.  
2. Reference number 65,66, and 67 may have been furnished by either Waterous or original equipment manufacturer.





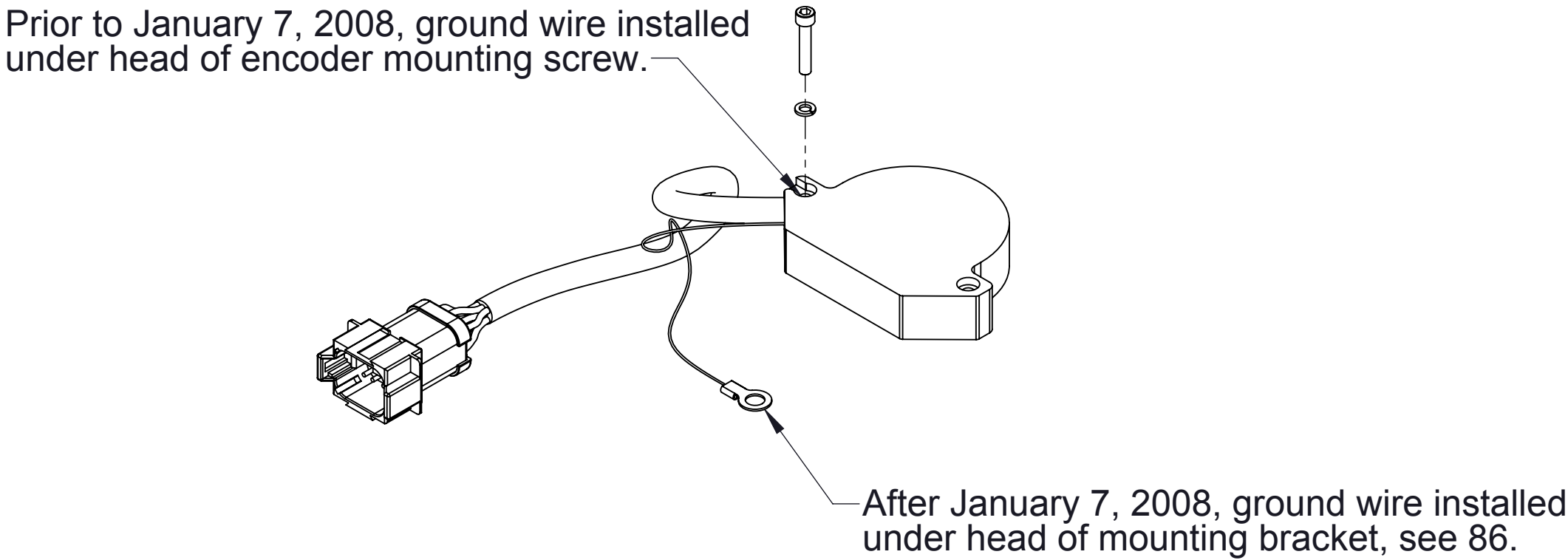


Ref No.	Description
53	Rotary Encoder replacement Kit
86	Actuator Subassembly
87	Valve and Actuator Subassembly

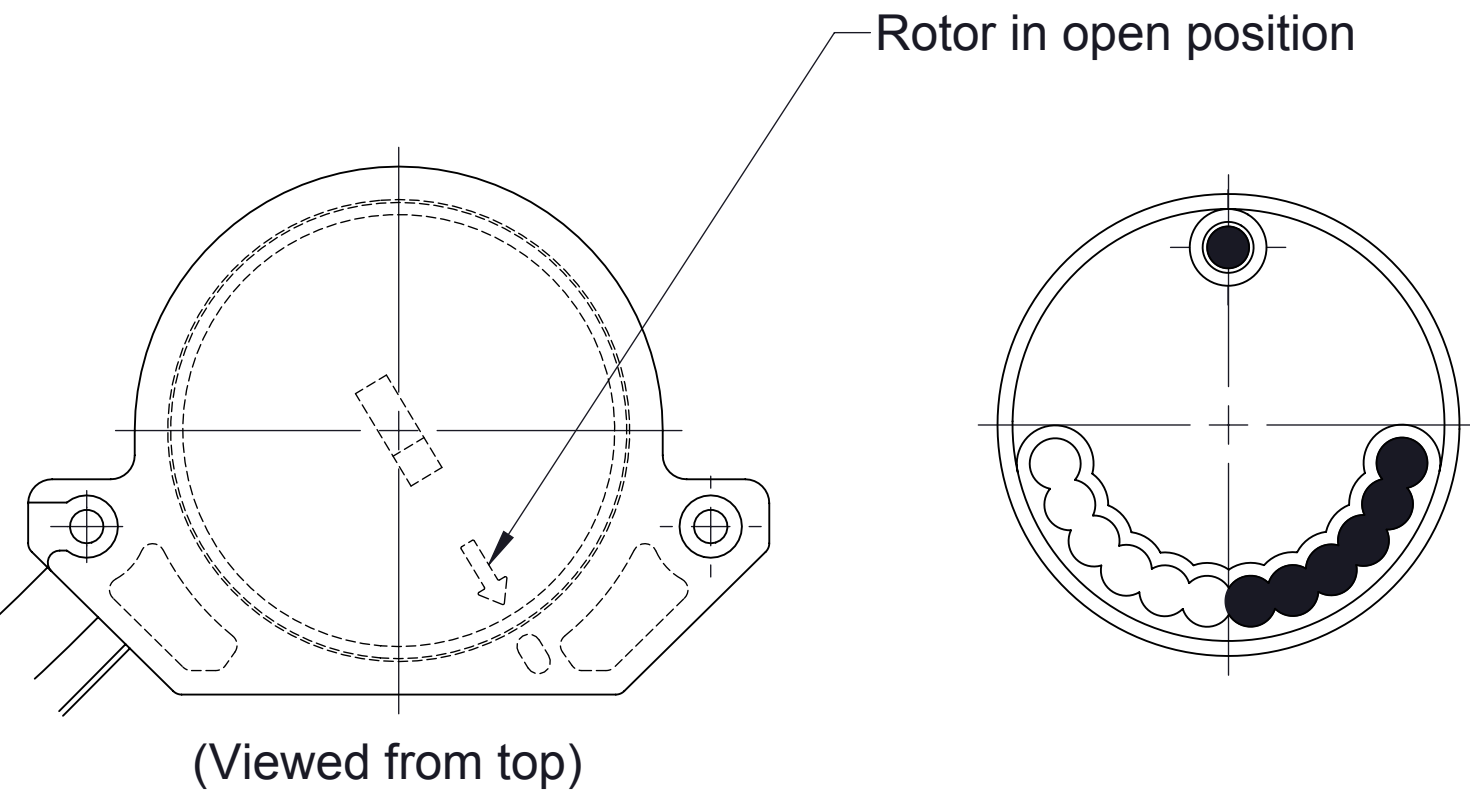


53  
Rotary Encoder  
Replacement Kit

**Encoder Details**

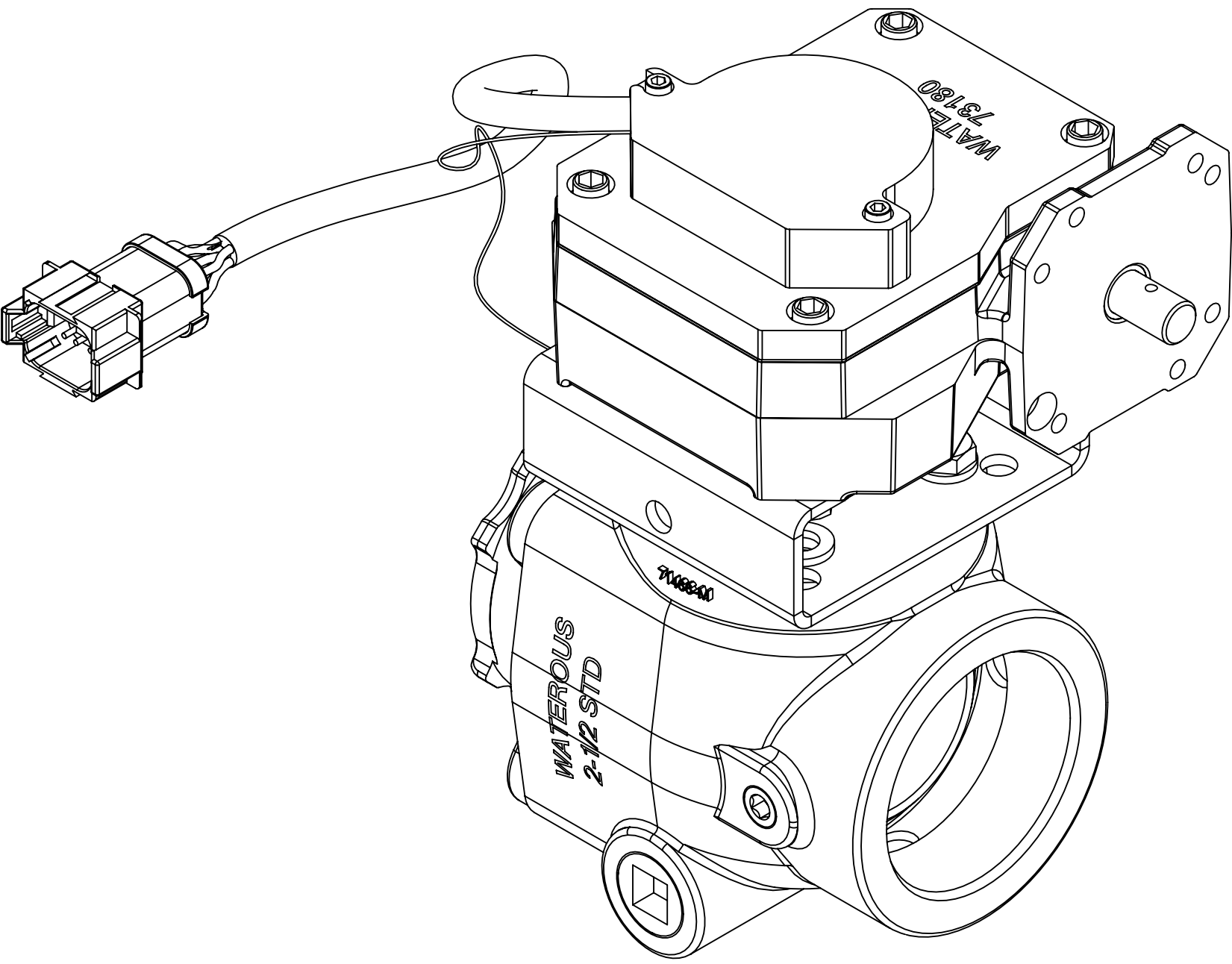


**Encoder Ground Wire Detail**



**Rotor Position**

**Rotor Magnet Positions**



**87**  
**Valve and Actuator Subassembly**

**Available Repair Subassemblies**