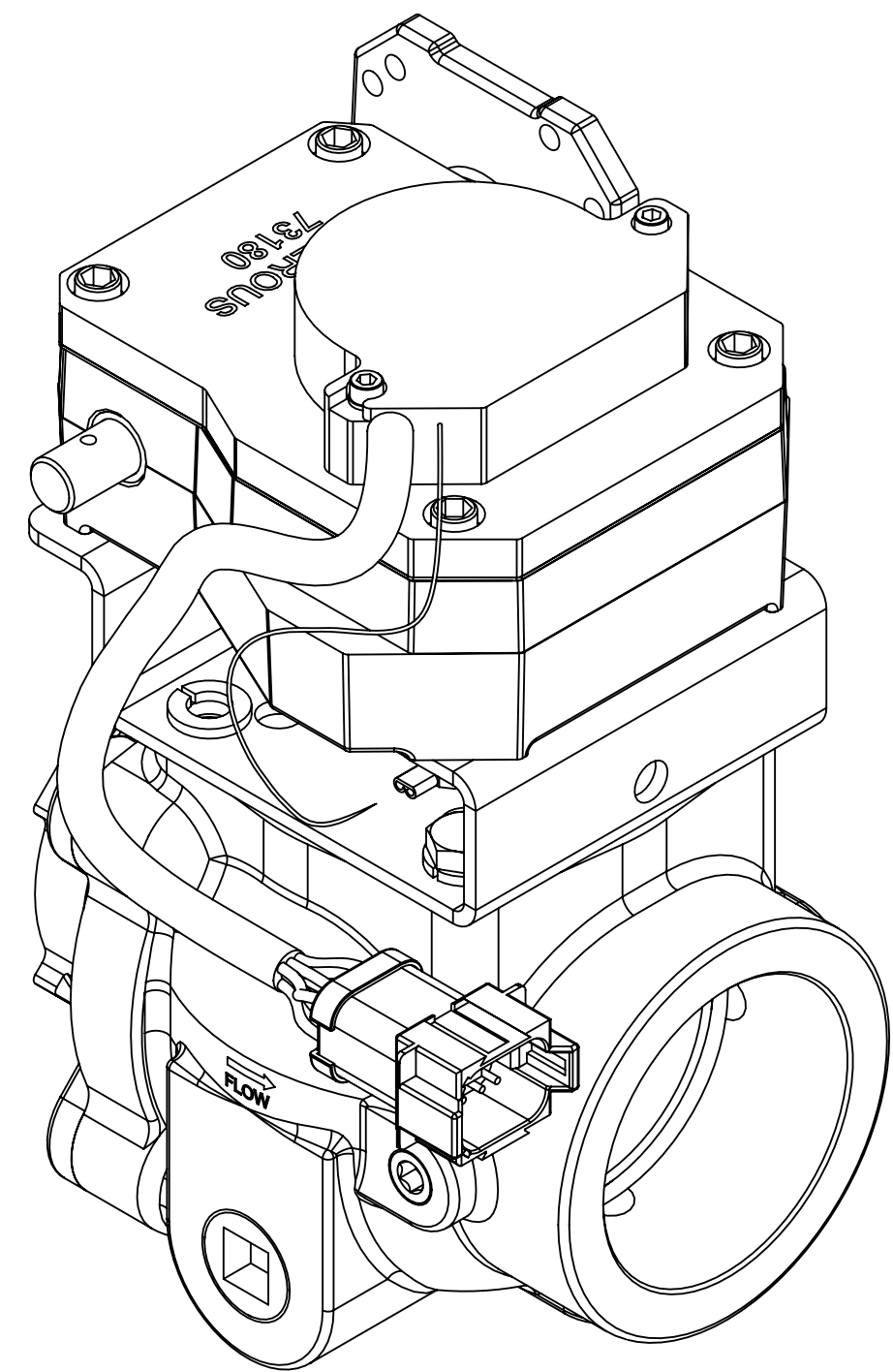
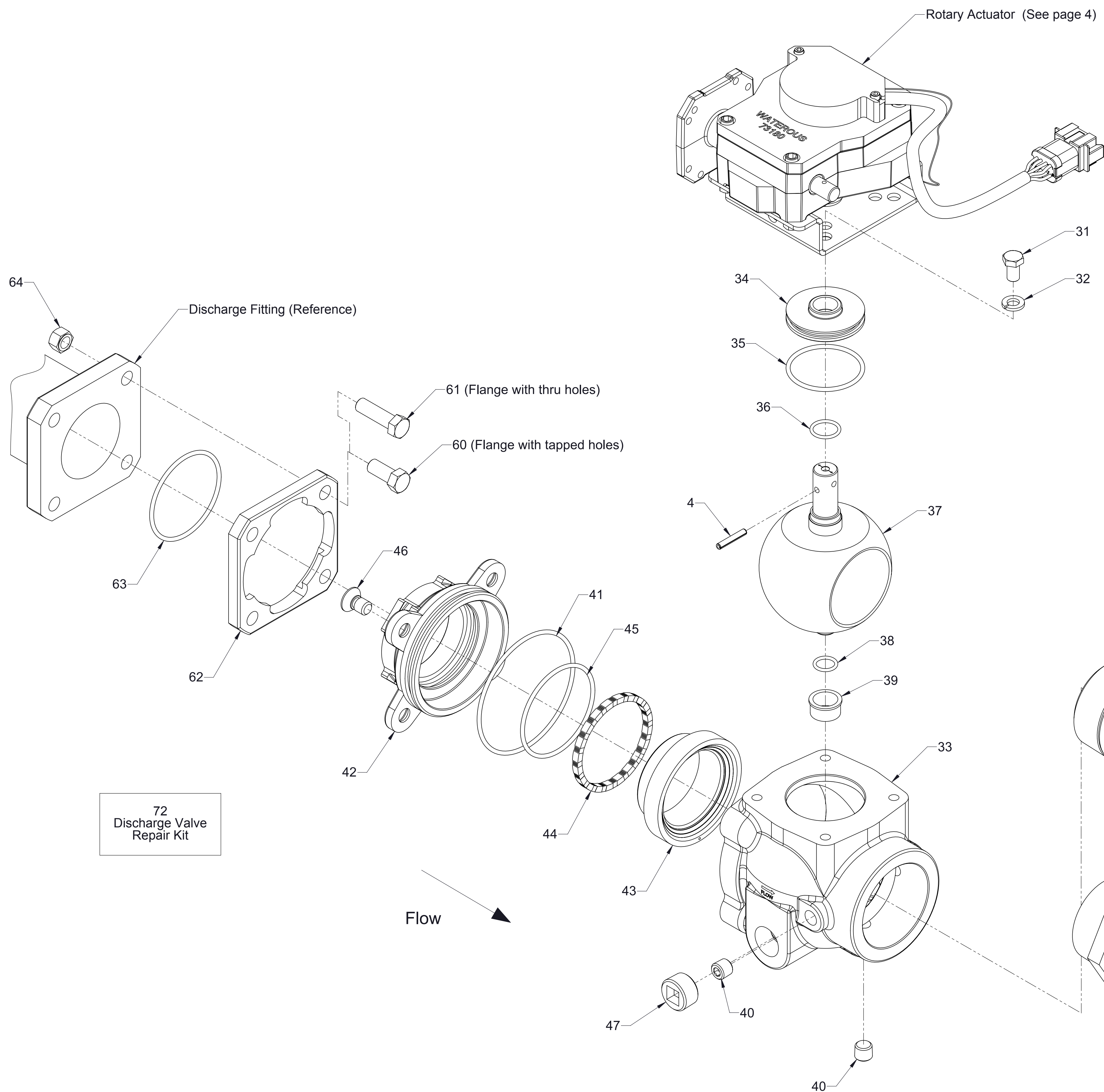


2-1/2 in. Full Flow Discharge Valve Assembly with Manual Rotary Actuator

Service Parts List

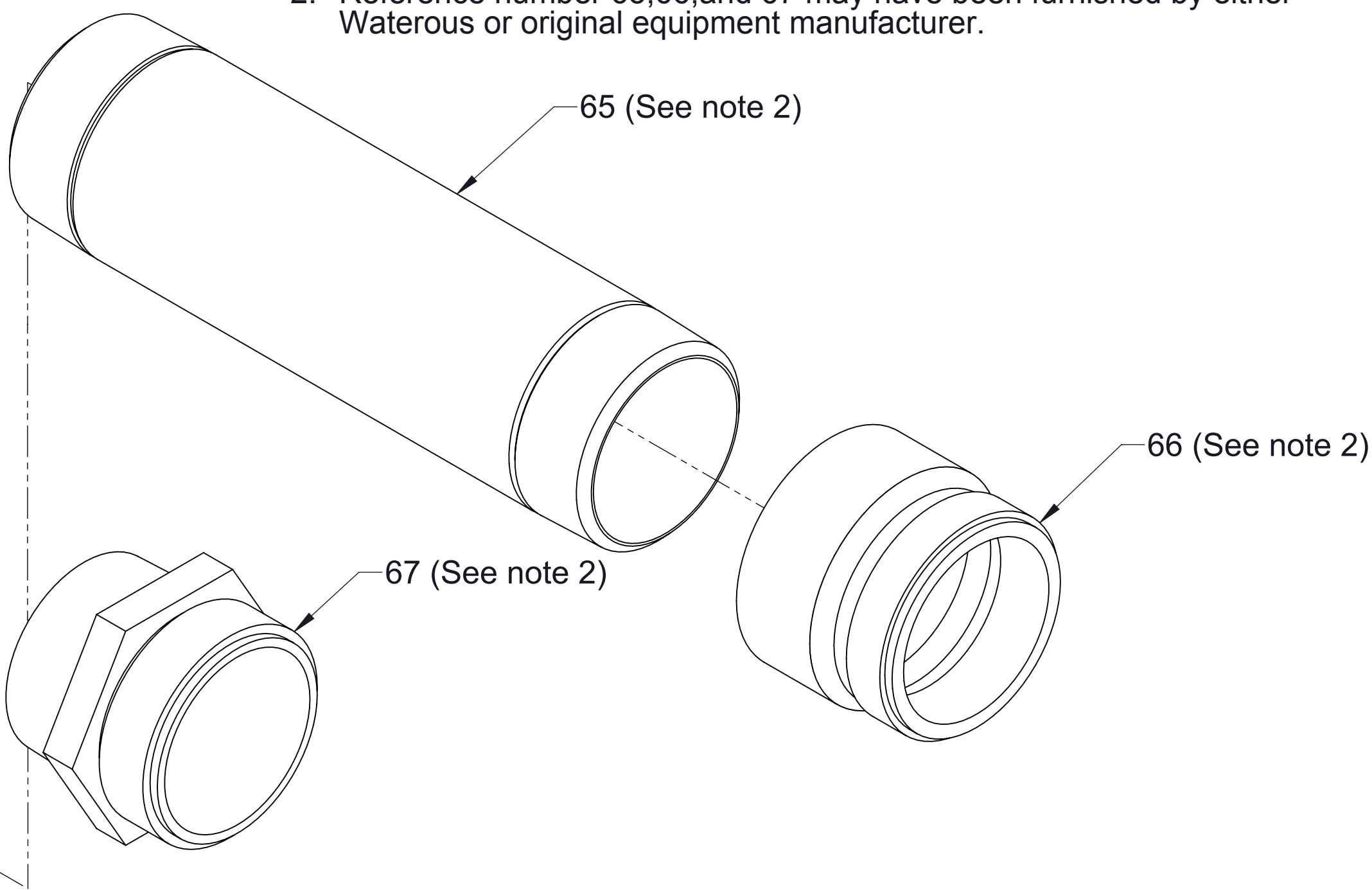
Components	See Page
2-1/2 in. Full Flow Ball Valve	2
Cables and Panel Components	3
Available Repair Subassemblies	4





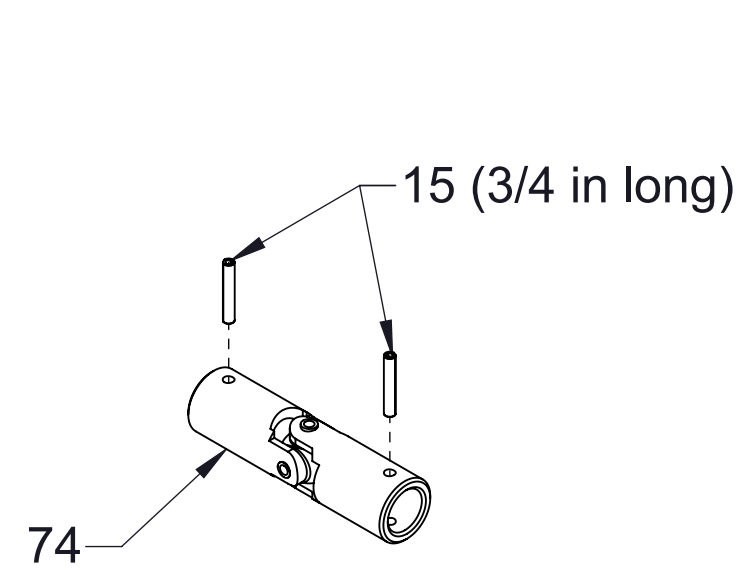
Ref No.	Description
4	Pin-Spring, 3/16 x 1-1/8 in
31	Screw-Hex Hd, 3/8-16 x 5/8 in
32	Washer-Lock, 3/8 in
33	Body-Valve, Discharge (2.5 FF)
34	Bushing-Stem, Upper (2-1/2 FF)
35	O-Ring, 2-1/8 x 2-3/8 in
36	O-Ring, 3/4 x 15/16 in
37	Ball-Discharge, Valve (2.5 FF)
38	O-Ring, 9/16 x 3/4 in
39	Bushing-Lower Stem
40	Plug-Pipe, Headless, 1/4 NPT
41	O-Ring, 3-7/8 X 4-1/8 in
42	Retainer-Seal (2-1/2 FF)
43	Seal-Valve, Ball (2-1/2 FF)
44	Spring-Wave
45	O-Ring, 2-7/8 x 3-1/8 in
46	Screw-Machine, Flat Head Socket, 7/16-14 x 3/4 in
47	Plug-Pipe, Headless, 3/4 NPT
60	Screw-Hex Hd, 7/16-14 x 1 in (See note 1)
61	Screw-Hex Hd, 7/16-20 x 1-1/2 in
62	Flange-Mounting
63	O-Ring, 2-3/4 x 3 in
64	Nut-Hex, 7/16-20 (Used only with 61)
65	Nipple-Pipe, 2-1/2 NPT x 10 in (See note 2)
66	Adapter-Hose, 2-1/2 (See note 2)
67	Nipple-Hose, 2-1/2 Double Male (See note 2)
72	Discharge Valve Repair Kit

Notes:  
 1. Reference number 60, Hex Hd Screw, 7/16-14 x 1 in. used instead of reference number 61, Hex Hd Screw, 7/16-20 x 1-1/2 in. when discharge flange has tapped mounting holes.  
 2. Reference number 65,66,and 67 may have been furnished by either Waterous or original equipment manufacturer.

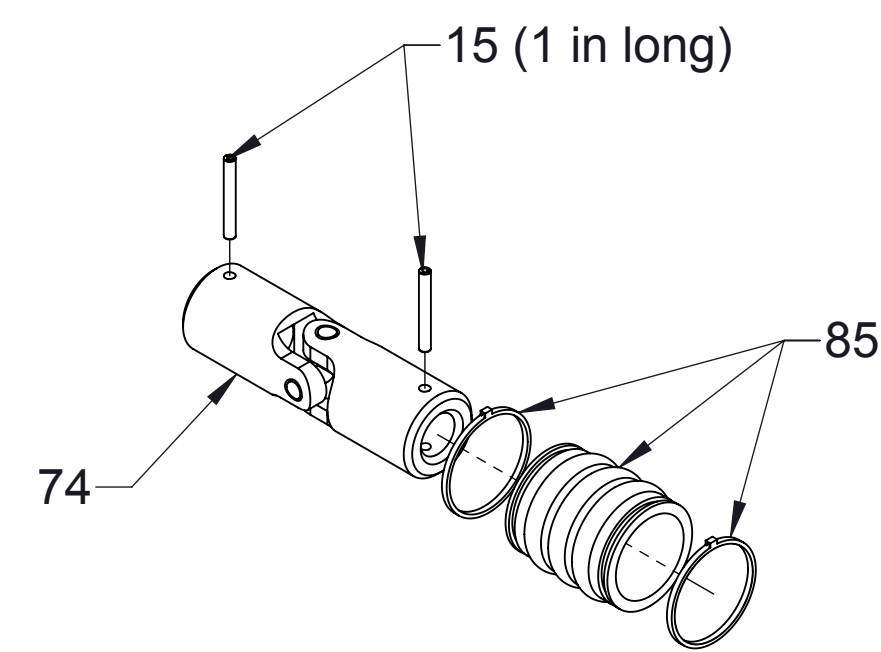


2-1/2 in Full Flow Ball Valve



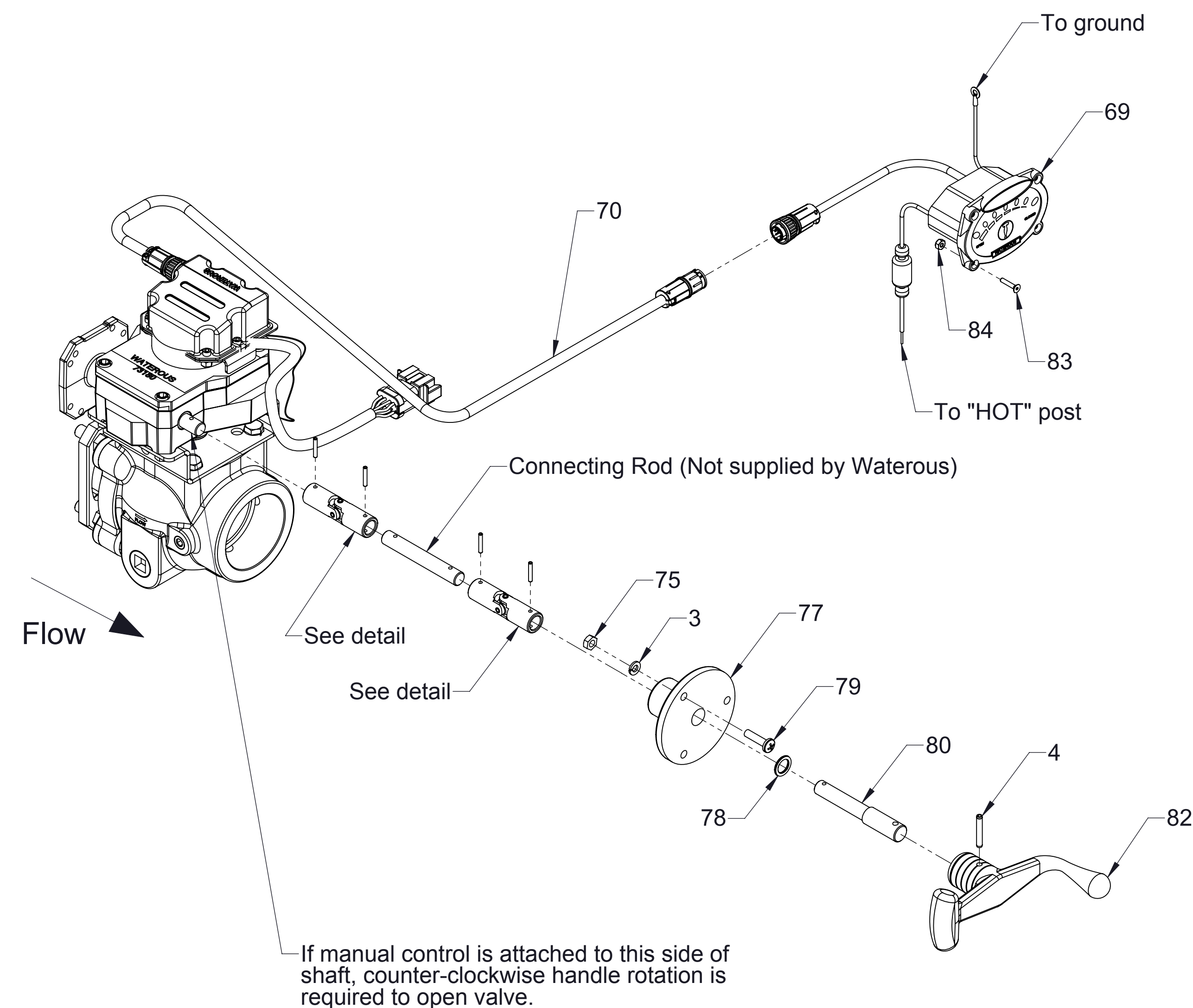


Standard Configuration

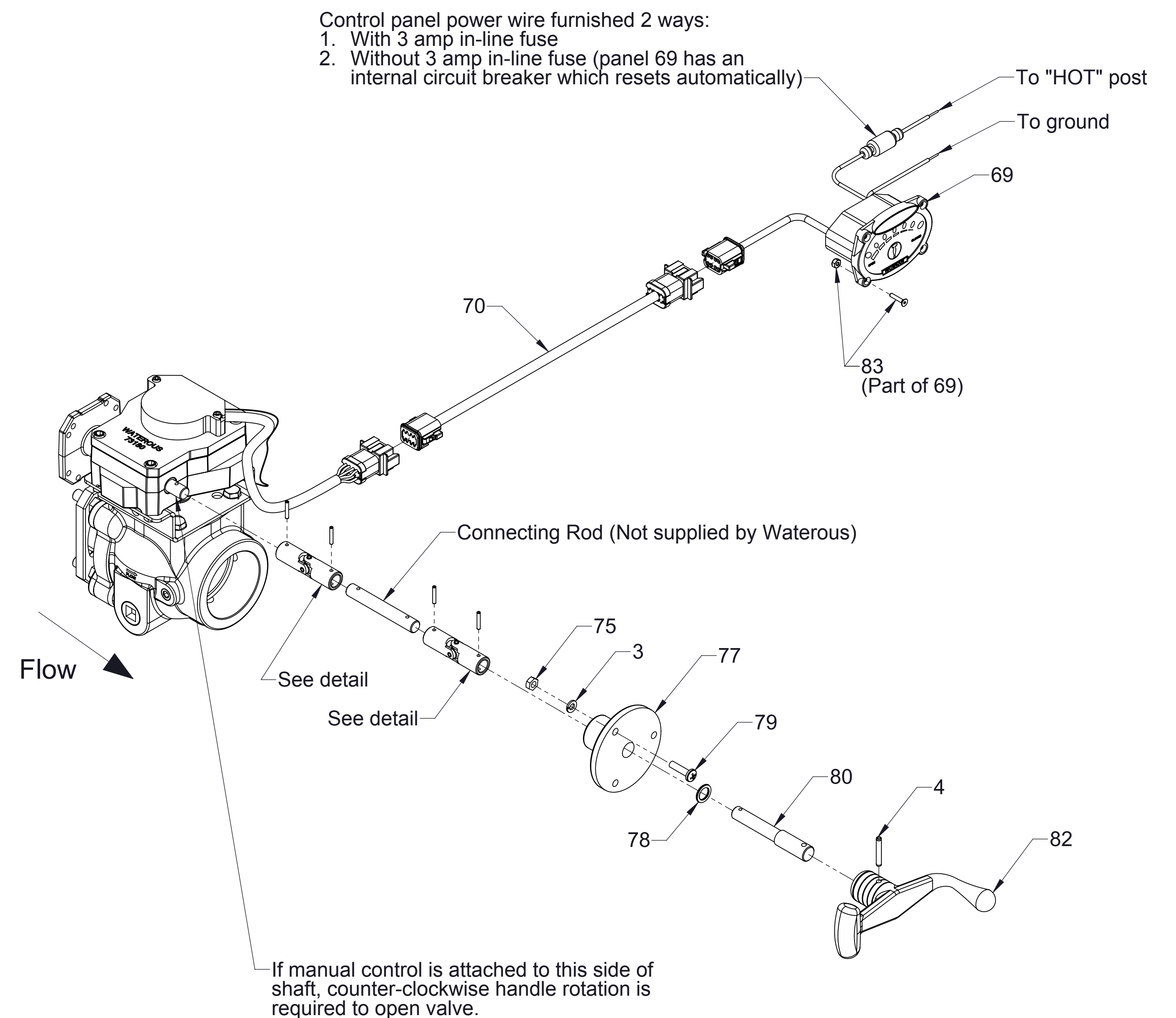


Optional Configuration with Sealing Boot

### U-Joint Detail



Valves built prior to November 6, 2006



Valves built After November 6, 2006

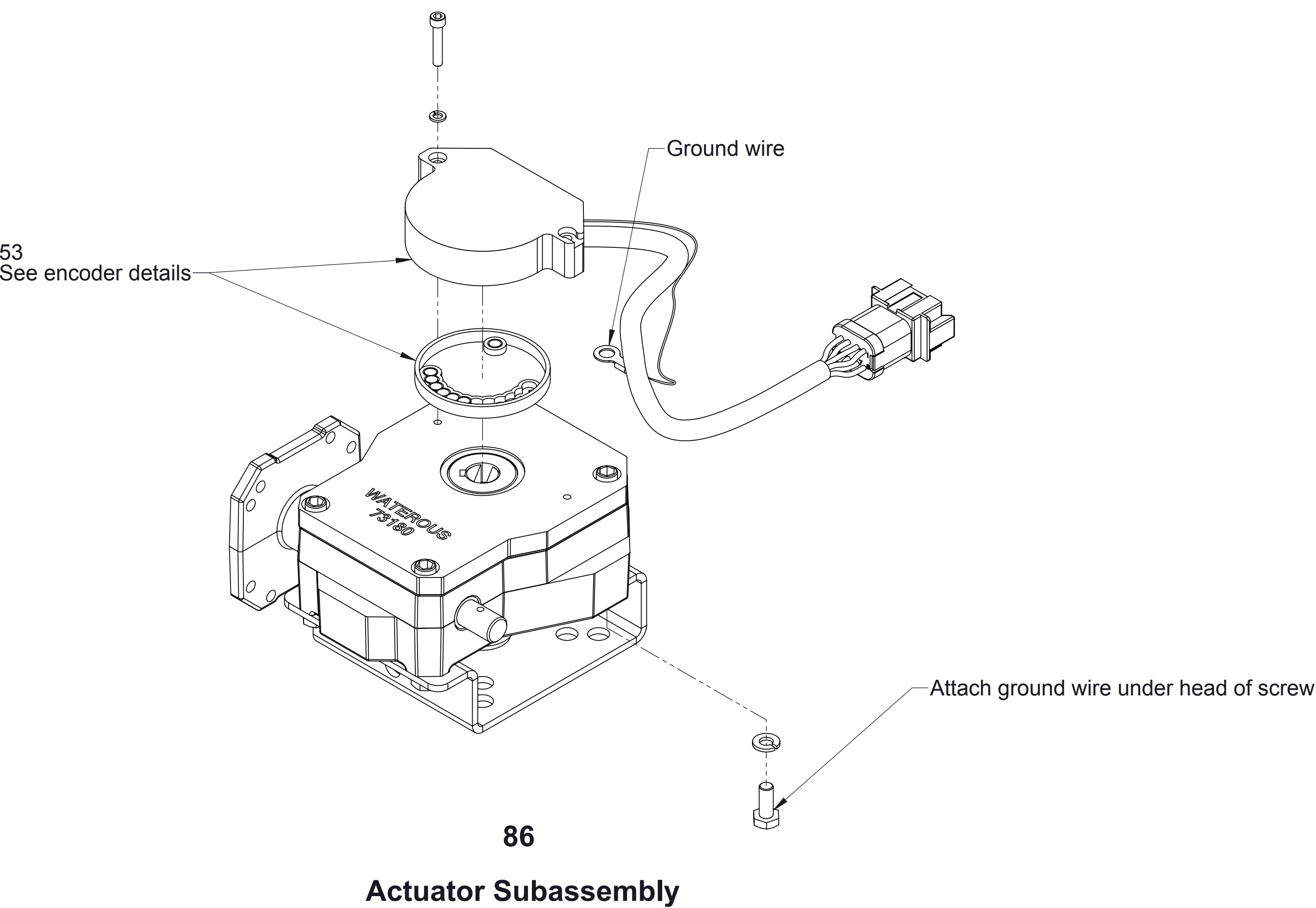
### Cables and Panel Components

Ref No.	Description	Ref No.	Description
3	Washer-Lock, 1/4 in	78	Bearing-Thrust
4	Pin-Spring, 3/16 x 1 1/4 in	79	Screw-Machine, Pan Hd, 1/4-20 x 1 in
15	Pin-Spirol, 1/8 x 3/4 in or 1/8 x 1 in	80	Shaft-Remote
69	LED Panel Wiring Assembly	82	Handle-Discharge Valve
70	Wire Assembly-Switch Extension	83	Screw-Machine, Flat Hd, Hex Soc, #6-32 x 3/4 in (Prior to November 6, 2006)
74	Joint-Universal	83	Control Panel Mounting Hardware (Includes (4) Socket Hd Screws, #6-32 x 3/4 in and (4) Nylok Nuts, #6-32) (After November 6, 2006)
75	Nut-Hex, Machine, 1/4-20	84	Nut-Hex, Nylok, #6-32 (Prior to November 6, 2006)
77	Body-Remote	85	U-Joint Boot (Includes cable ties)

Control panel power wire furnished 2 ways:

1. With 3 amp in-line fuse
2. Without 3 amp in-line fuse (panel 69 has an internal circuit breaker which resets automatically)

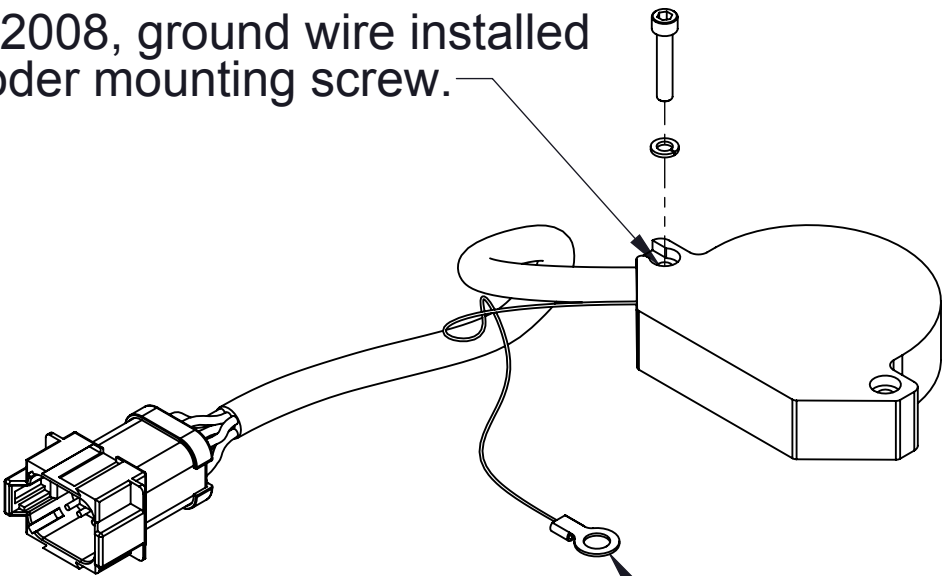
Ref No.	Description
53	Rotary Encoder replacement Kit
86	Actuator Subassembly
87	Valve and Actuator Subassembly



53  
Rotary Encoder  
Replacement Kit

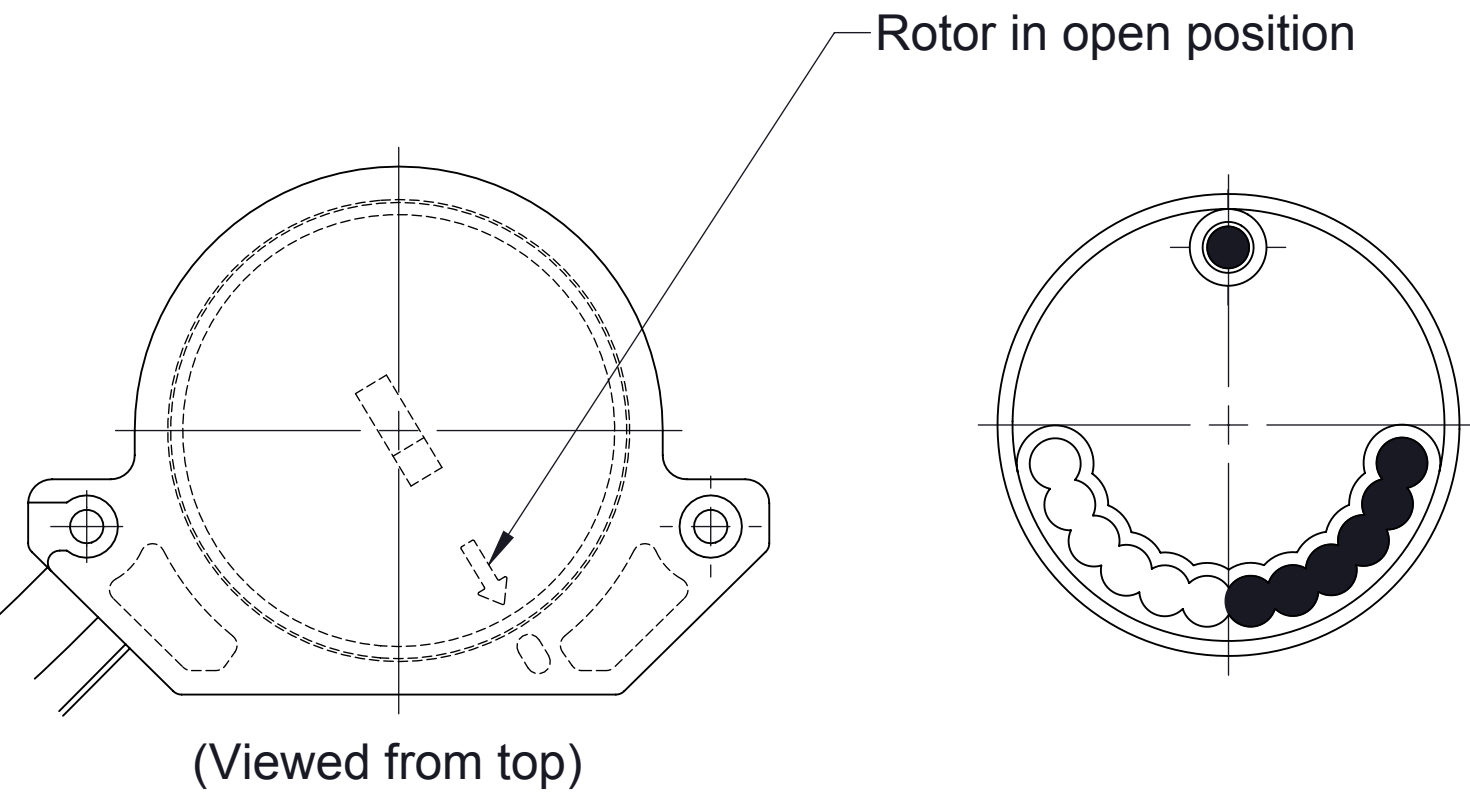
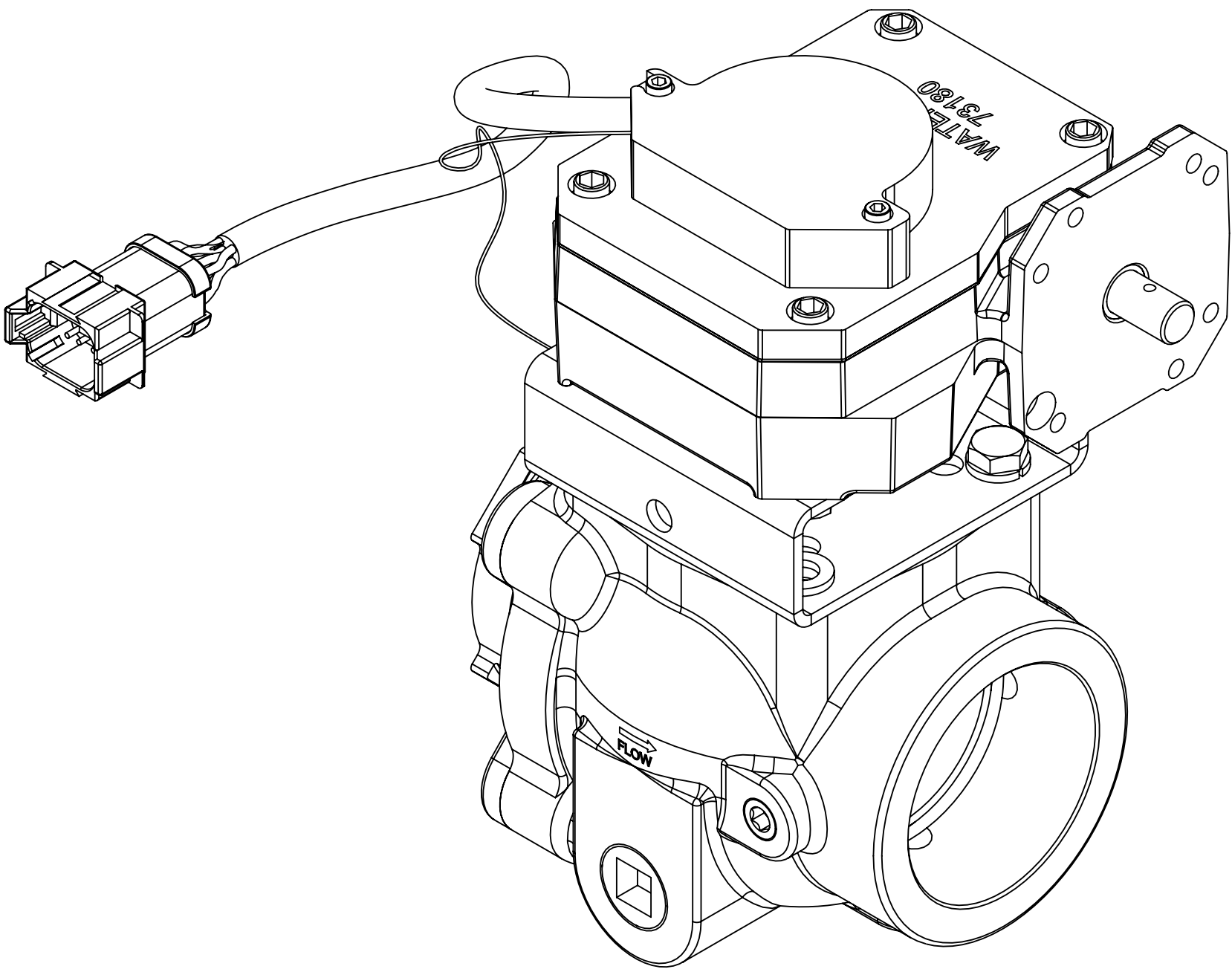
**Encoder Details**

Prior to January 7, 2008, ground wire installed under head of encoder mounting screw.



After January 7, 2008, ground wire installed under head of mounting bracket, see 86.

**Encoder Ground Wire Detail**



**87**  
**Valve and Actuator Subassembly**

**Available Repair Subassemblies**