

Issued: 03/03/03

Revised:

W A T E R O U S

WATEROUS COMPANY

SOUTH ST. PAUL, MINNESOTA

FRONT DISCHARGE PIPING ASSEMBLY

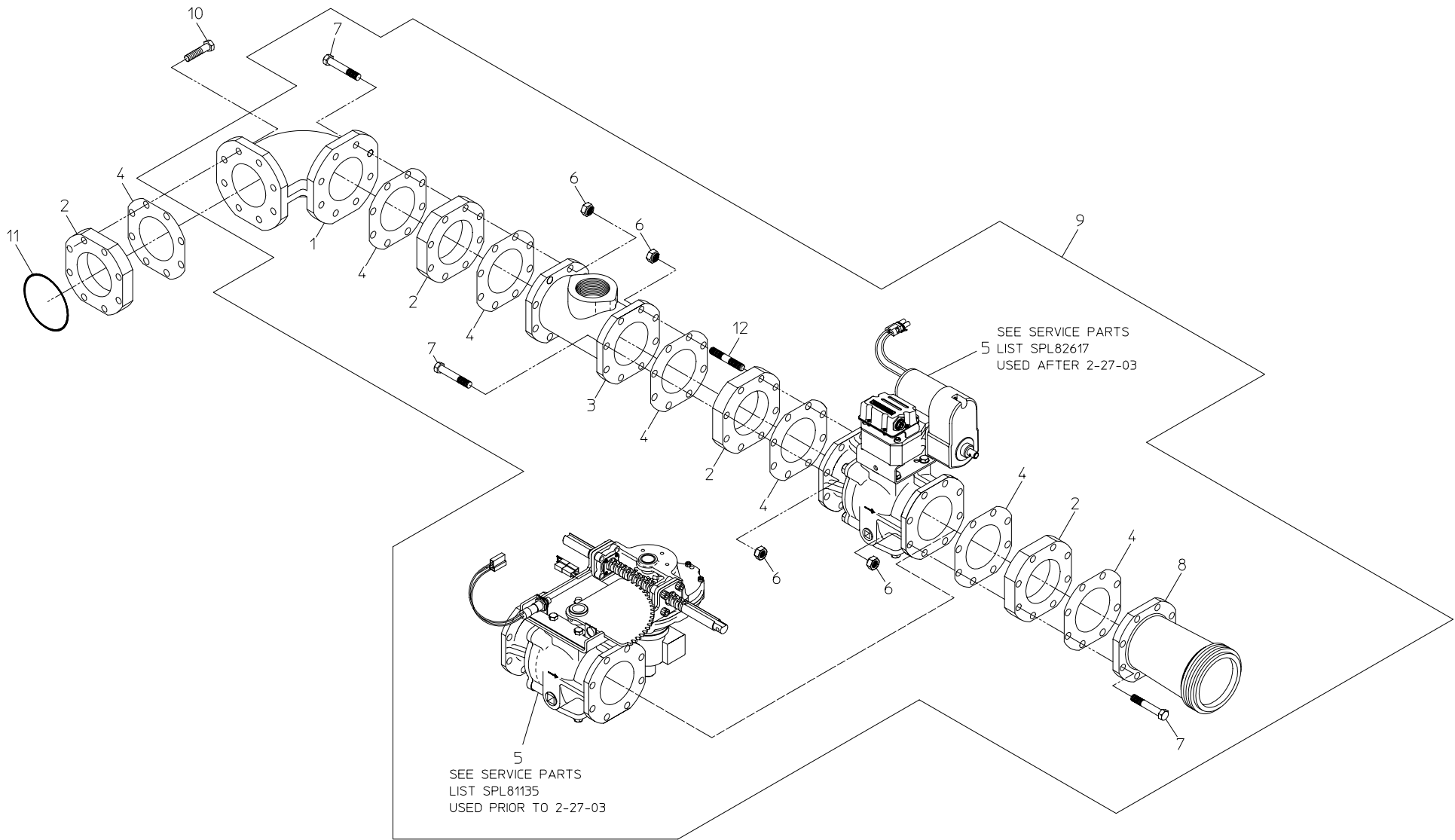
REF NO.	DESCRIPTION	REF NO.	DESCRIPTION
1	Flanged elbow	7	Hex hd screw, 1/2-20 x 2-3/4 in.
2	Spacer, 1-1/16 in.	8	Discharge extension, 8 in - 4 in. NH
3	Discharge extension	9	Front discharge piping subassembly
4	Gasket	10	Hex hd screw, 1/2-13 x 2-1/4 in.
5	Electric discharge valve with push-pull override	11	O-ring, 4-3/8 x 4-5/8 in.
6	Hex nut, 1/2-20	12	Stud, 1/2-20 x 1/2-20 x 3-1/4 in.

PLEASE NOTE

WHEN ORDERING PARTS PLEASE SUPPLY PUMP SERIAL NUMBER

SPL82621

PAGE 1 OF 2



FRONT DISCHARGE PIPING ASSEMBLY