



Document Number	Issue Date	Rev. Date
SPL82743	07/31/03	9/20/16

6 in. Butterfly Valve Service Parts List

For details of valve not shown on this document, refer to F-1031, Section 2318 (METSO document no. IM0-308).

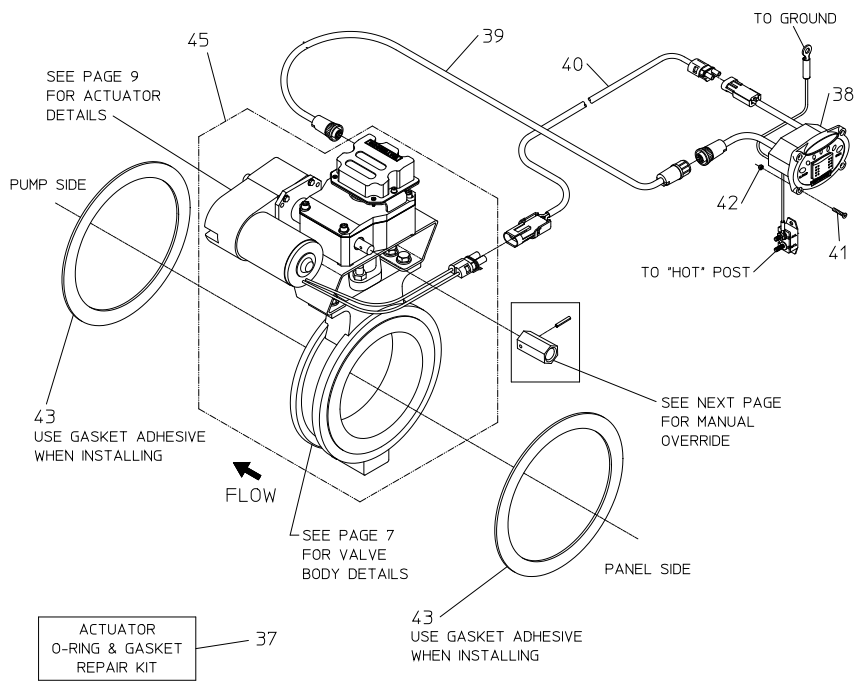
For details of pneumatic actuator not shown on this document, refer to F-1031, Section 2319 (Jamesbury document no. IM0-529).

Valve Actuator Type		Components	See Pages
Electric		Cables and Panel Components	2, 3
		Manual Override	4, 5
		Valve Body	6, 7
		Rotary Actuator	8, 9
Pneumatic		Valve and Actuator	10, 11
Manual	Indicating	Cables and Panel Components	12, 13
		Valve Body	14, 15
		Rotary Actuator	16, 17
	Non-Indicating	Valve and Actuator	18, 19

Electric Valve, Cables & Panel Components

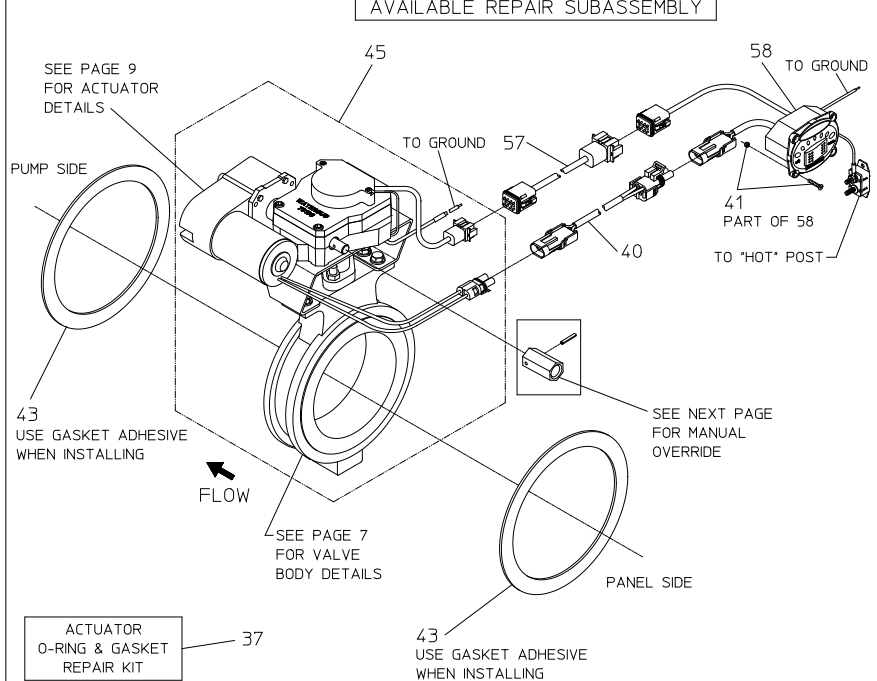
REF. NO.	DESCRIPTION
24	Adapter Nut
26	Spirol Pin, 1/8 x 3/4 in.
37	O-ring and Gasket Repair Kit
38	LED Panel Assembly (Prior to November 6, 2006)
39	Switch Extension Wire Assembly

REF. NO.	DESCRIPTION
40	Motor Extension Wire Assembly
41	Socket Flat Head Screw, 6-32 x 3/4 in.
42	Nylok Nut, #6-32
45	Valve and Actuator Subassembly (Less Panel Wiring)
58	LED Panel Assembly (After November 6, 2006)
86	Actuator Subassembly



* PART OF REPAIR KIT 37

VALVE BUILT PRIOR TO NOVEMBER 6, 2006



* PART OF REPAIR KIT 37

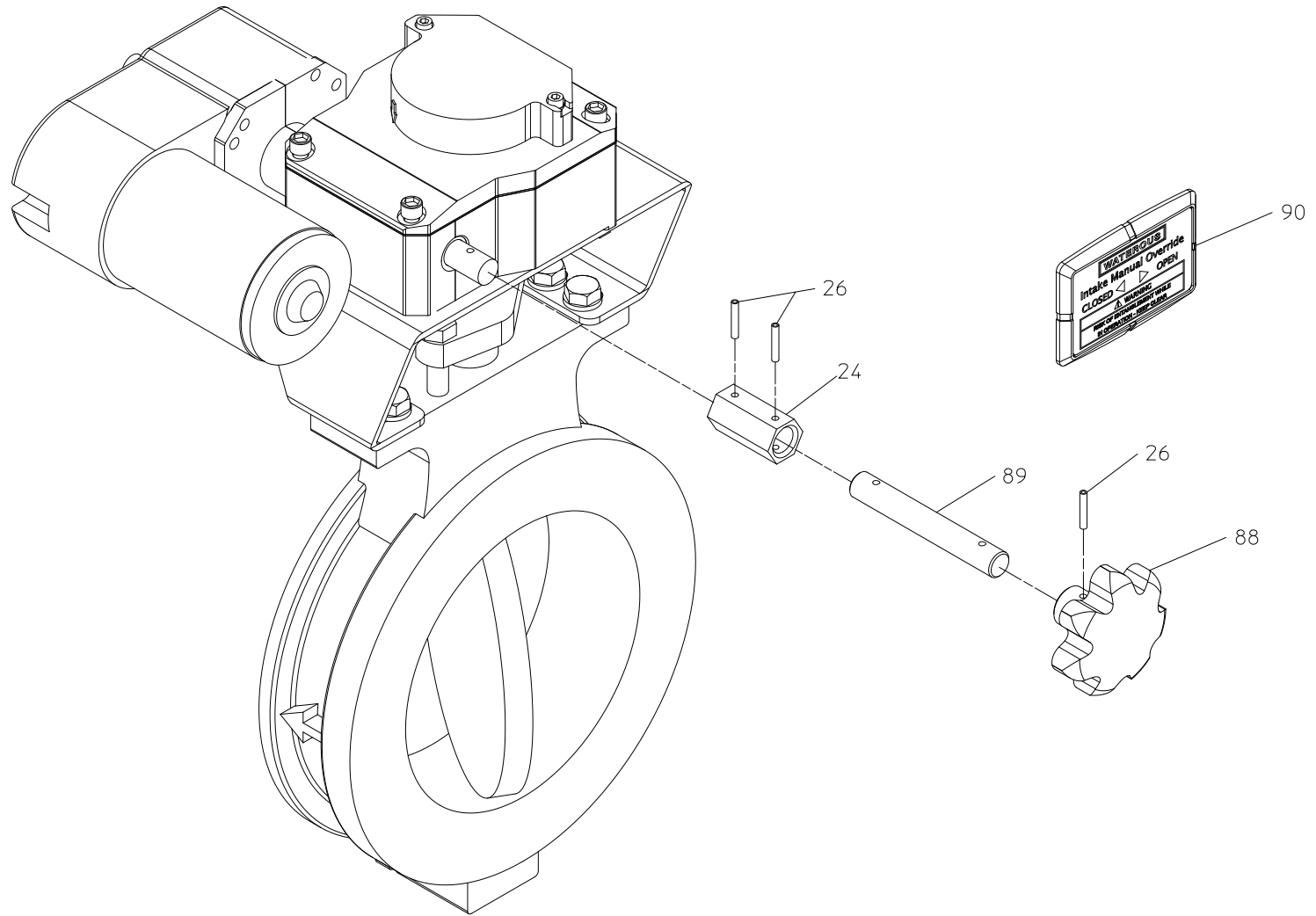
VALVE BUILT AFTER NOVEMBER 6, 2006

**ELECTRIC VALVE WITH CABLES
AND PANEL COMPONENTS**

Manual Override

REF. NO.	DESCRIPTION
24	Adapter Nut
26	Spirol Pin, 1/8 x 3/4 in.

REF. NO.	DESCRIPTION
88	Knob, Manual Override
89	Rod-Connecting, 1/2 x 3-1/2 in., Manual Override



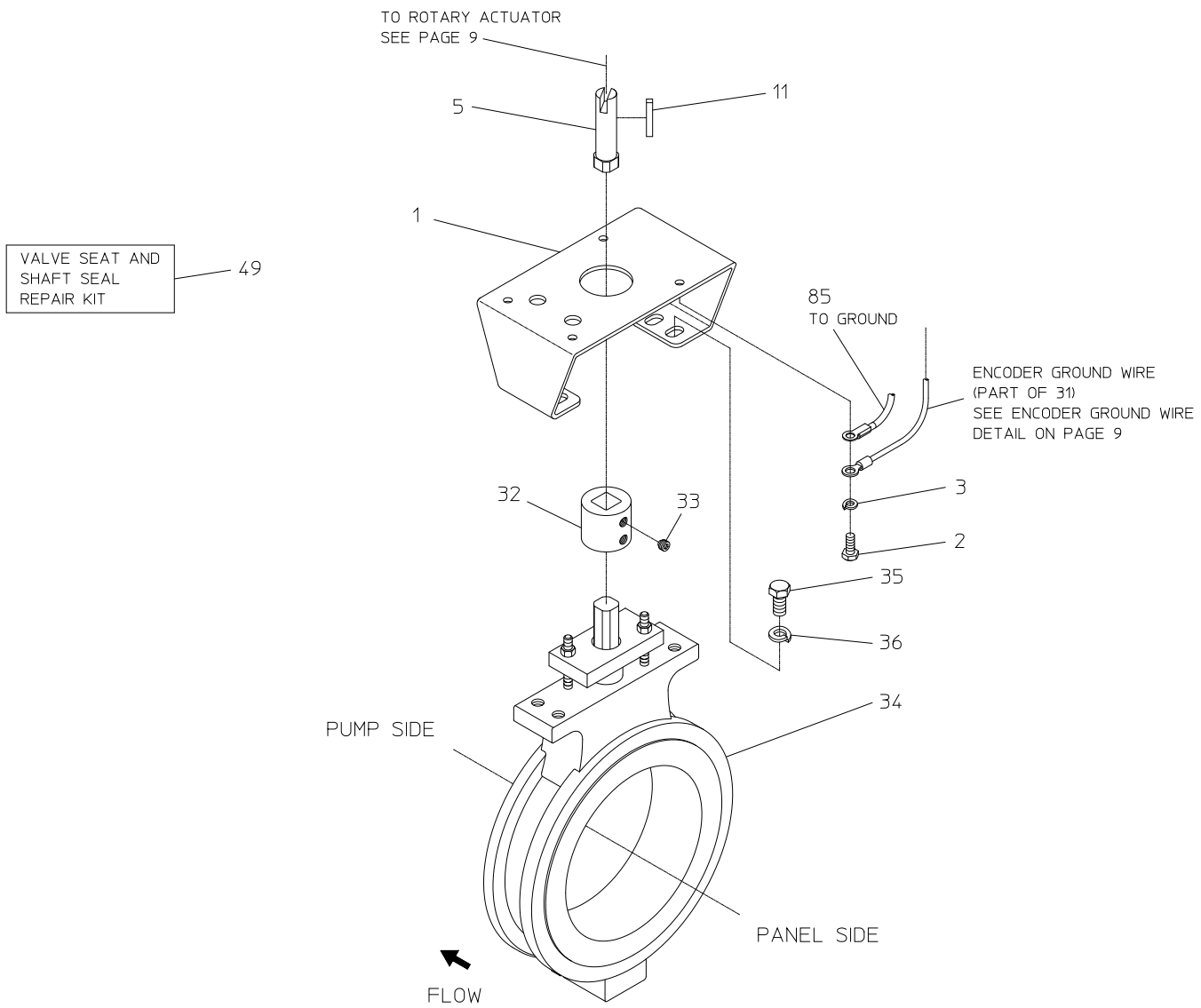
MANUAL OVERRIDE

IF MANUAL OVERRIDE IS USED, ATTACH TO
SHAFT ON OPPOSITE SIDE OF MOTOR ONLY

Electric Valve Body

REF. NO.	DESCRIPTION
1	Mounting Bracket
2	Hex Head Screw, 1/4-20 x 5/8 in.
3	Lock Washer, 1/4 in.
5	Extension Shaft
11	Key, 3/16 x 1-1/4 in.
32	Coupling

REF. NO.	DESCRIPTION
33	Hex Socket Set Screw, 3/8-24 x 5/16 in.
34	Butterfly Valve (Less Actuator)
35	Hex Head Screw, 3/8-16 x 3/4 in.
36	Lock Washer, 3/8 in.
49	Valve Seat and Shaft Seal Repair Kit
85	Ground Wire Assembly

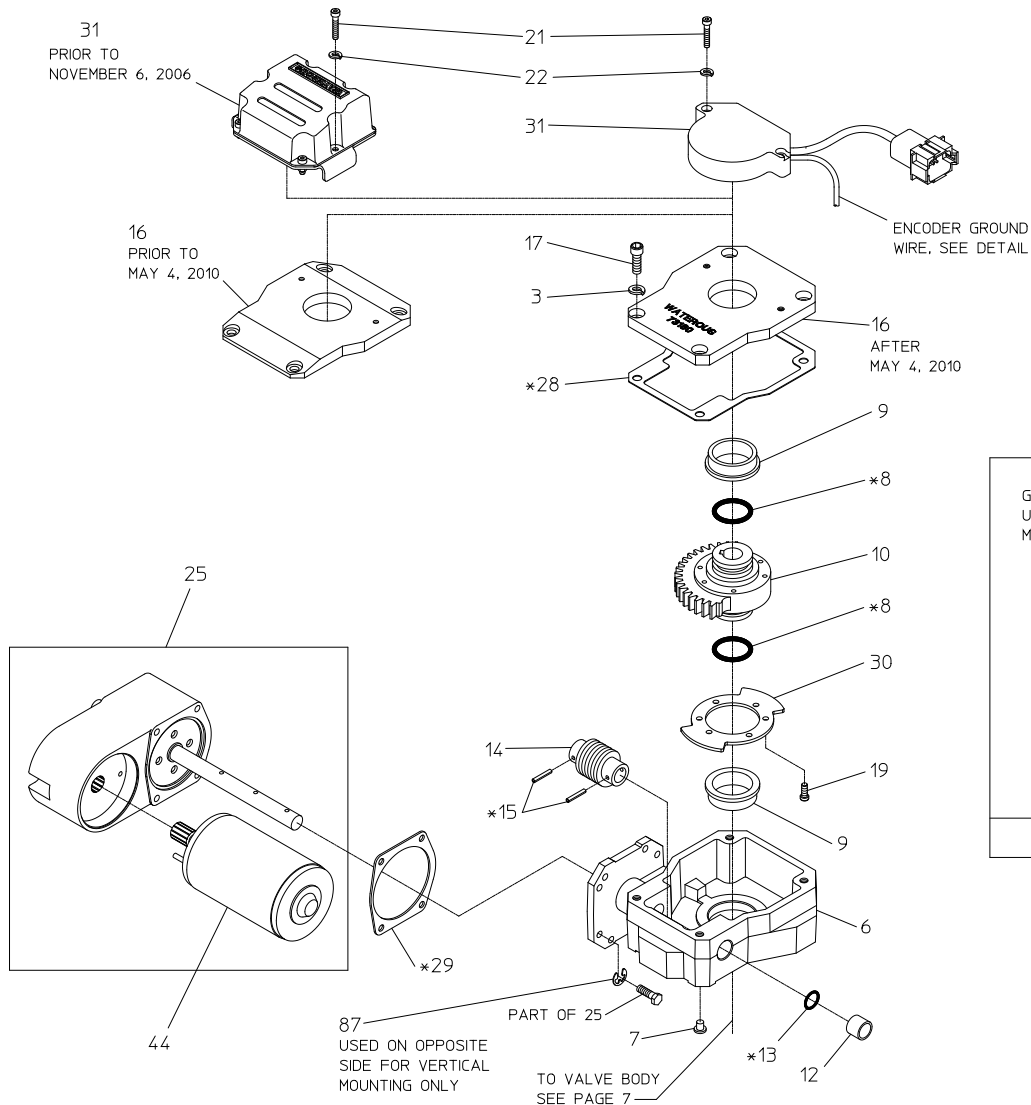


ELECTRIC VALVE BODY

Electric Valve Rotary Actuator

REF. NO.	DESCRIPTION
3	Lock Washer, 1/4 in.
6	Worm Gear Housing Assembly (Includes Flanged Bearing 9, Sleeve Bearing 12 and O-ring 13)
7	Rubber Plug
8	O-ring, 1 x 1-1/4 in.
9	Flanged Bearing, 1-1/4 x 1-1/2 in.
10	Worm Gear Sector
12	Sleeve Bearing, 1/2 x 5/8 in.
13	O-ring, 1/2 x 5/8 in.
14	Worm Gear
15	Spirol Pin, 1/8 x 3/4 in.
16	Housing Cover Assembly (Includes Flanged Bearing 9)

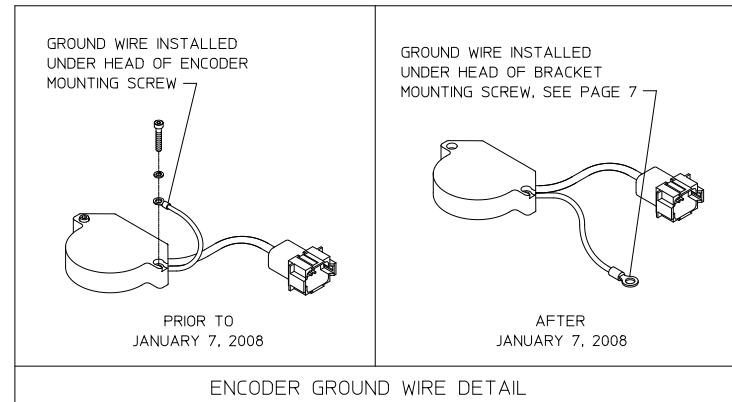
REF. NO.	DESCRIPTION
17	Socket Head Screw, 1/4-20 x 5/8 in.
19	Socket Head Screw, 8-32 x 1/2 in.
21	Socket Head Screw, 8-32 x 7/8 in.
22	Lock Washer, #8
25	Gear Motor
28	Actuator Gasket
29	Gear Motor Gasket
30	Limit Disc
31	Rotary Switch Assembly
37	Actuator O-ring and Gasket Repair Kit
44	Motor Replacement Kit
87	Retaining Ring



ACTUATOR
O-RING & GASKET
REPAIR KIT 37

* PART OF REPAIR KIT 37

MOTOR
REPLACEMENT
KIT 44

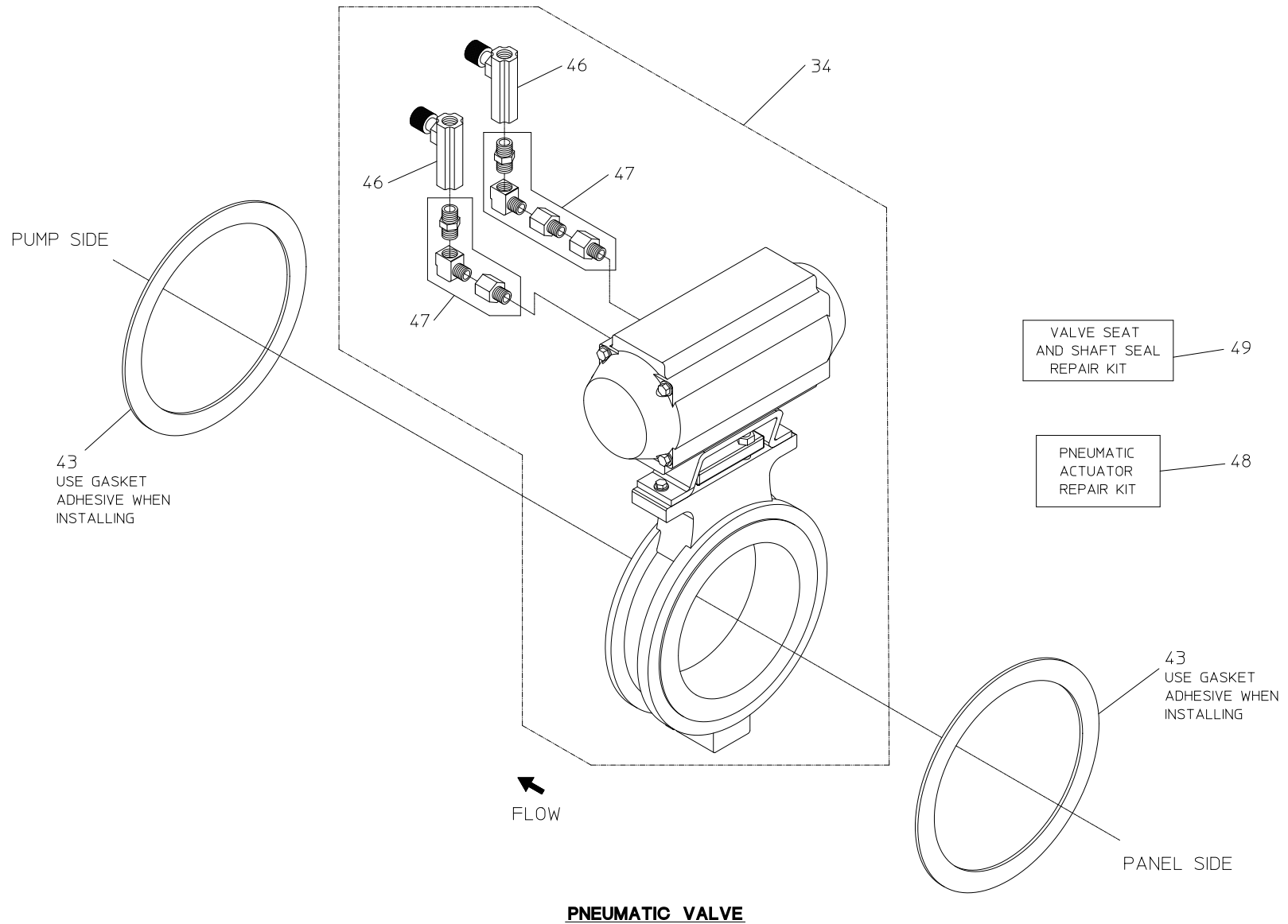


ELECTRIC VALVE ROTARY ACTUATOR

Pneumatic Valve

REF. NO.	DESCRIPTION
34	Pneumatic Butterfly Valve
43	Valve Gasket
46	Needle Valve Assembly

REF. NO.	DESCRIPTION
47	Needle Valve Fittings
48	Pneumatic Actuator Repair Kit
49	Valve Seat and Shaft Seal Repair Kit

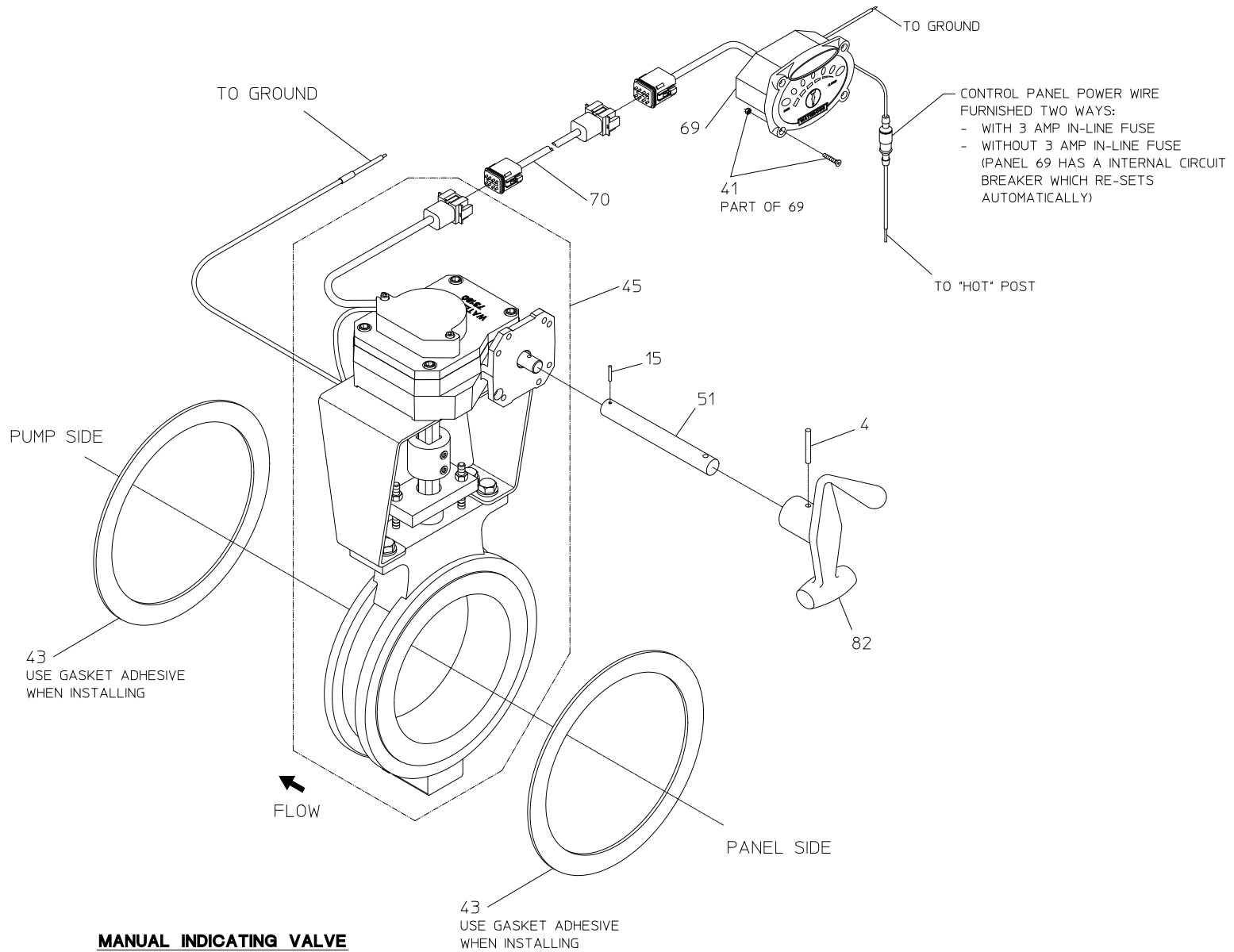


PNEUMATIC VALVE

Manual Indicating Valve, Cables & Panel Components

REF. NO.	DESCRIPTION
4	Spring Pin, 3/16 x 1-1/4 in.
15	Spring Pin, 3/16 x 3/4 in.
41	Socket Flat Head Screw, #6-32 x 3/4 in.
43	Valve Gasket
45	Manual Butterfly Valve (Includes Actuator)

REF. NO.	DESCRIPTION
51	Shaft Extension
69	LED Panel Assembly
70	Motor Extension Wire Assembly
82	Control Handle

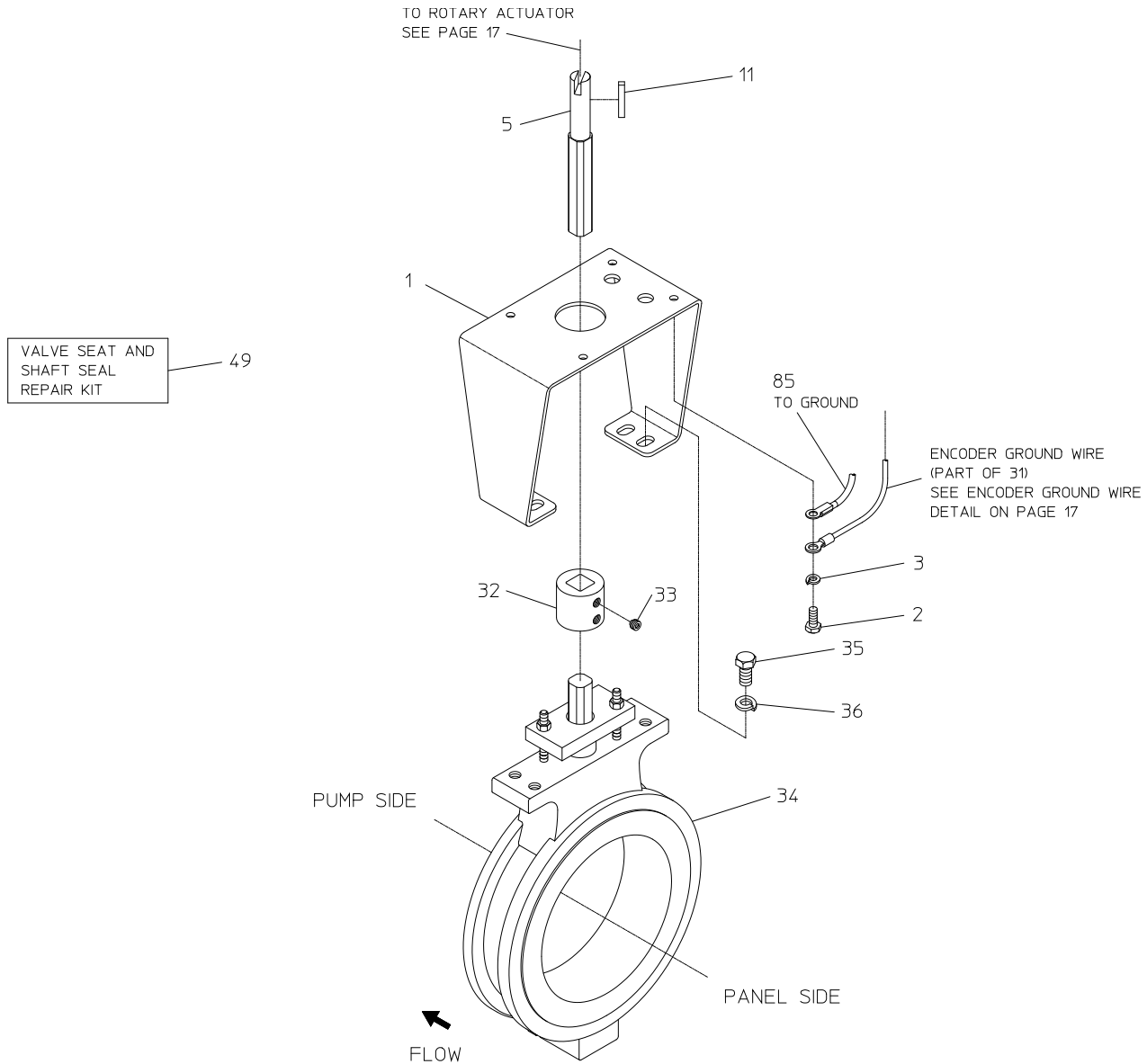


MANUAL INDICATING VALVE
WITH CABLE AND PANEL COMPONENTS

Manual Indicating Valve Body

REF. NO.	DESCRIPTION
1	Mounting Bracket
2	Hex Head Screw, 1/4-20 x 5/8 in.
3	Lock Washer, 1/4 in.
5	Extension Shaft
11	Key, 3/16 x 1-1/4 in.
32	Coupling

REF. NO.	DESCRIPTION
33	Hex Socket Set Screw, 3/8-24 x 5/16 in.
34	Butterfly Valve (Less Actuator)
35	Hex Head Screw, 3/8-16 x 3/4 in.
36	Lock Washer, 3/8 in.
49	Valve Seat and Shaft Seal Repair Kit
85	Ground Wire Assembly

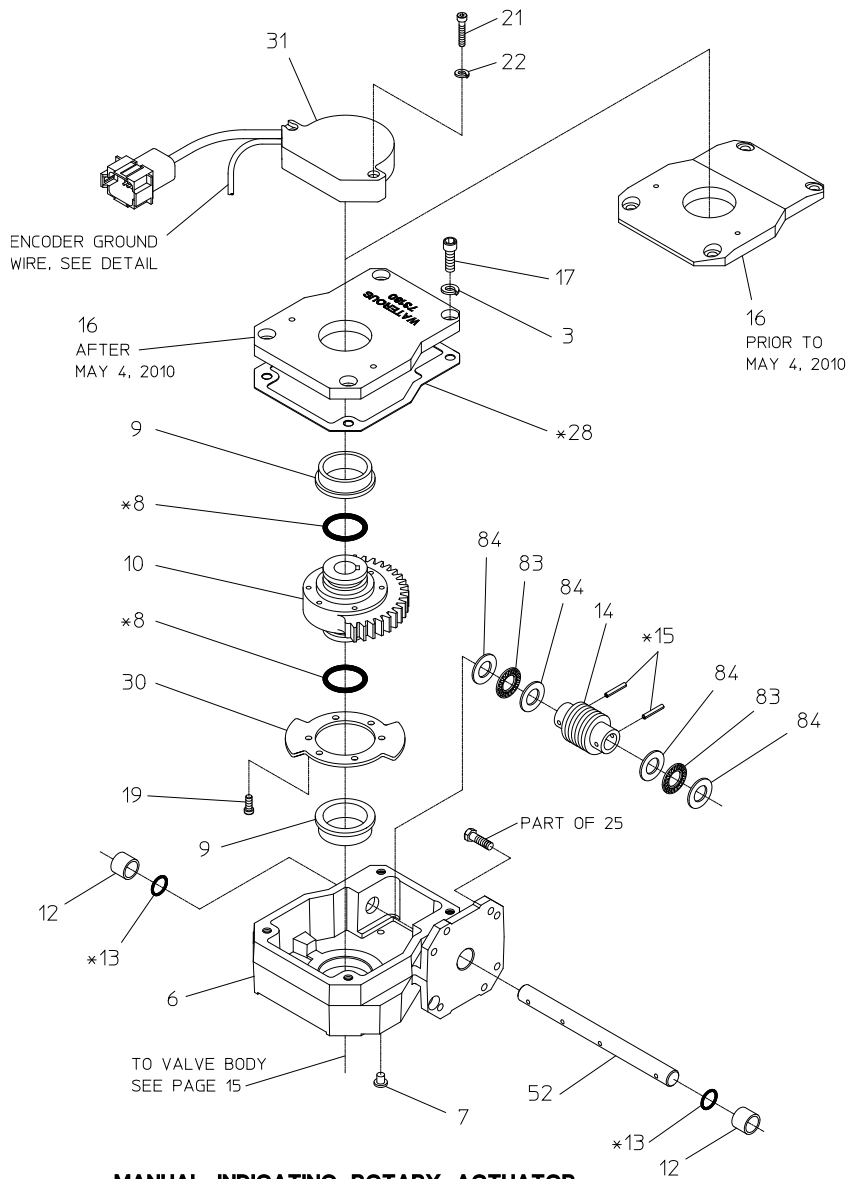


MANUAL INDICATING VALVE BODY

Manual Indicating Rotary Actuator

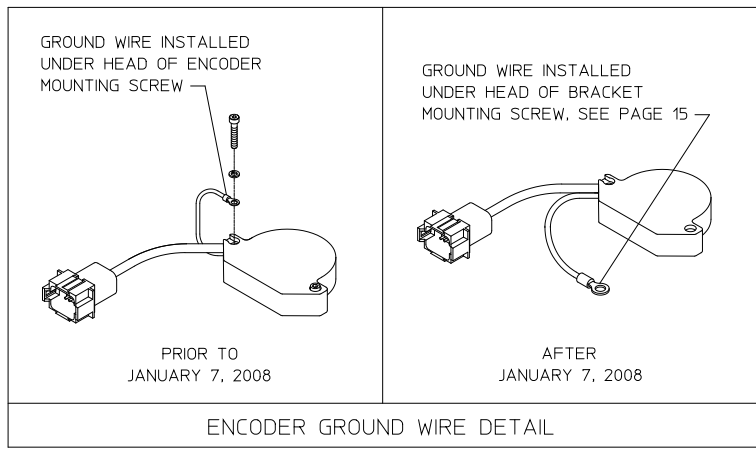
REF. NO.	DESCRIPTION
3	Lock Washer, 1/4 in.
6	Worm Gear Housing Assembly (Includes Flanged Bearing 9, Sleeve Bearing 12 and O-ring 13)
7	Rubber Plug
8	O-ring, 1 x 1-1/4 in.
9	Flanged Bearing, 1-1/4 x 1-1/2 in.
10	Worm Gear Sector
12	Sleeve Bearing, 1/2 x 5/8 in.
13	O-ring, 1/2 x 5/8 in.
14	Worm Gear
15	Spirol Pin, 1/8 x 3/4 in.

REF. NO.	DESCRIPTION
16	Housing Cover Assembly (Includes Flanged Bearing 9)
17	Socket Head Screw, 1/4-20 x 5/8 in.
19	Socket Head Screw, 8-32 x 1/2 in.
21	Socket Head Screw, 8-32 x 7/8 in.
22	Lock Washer, #8
28	Actuator Gasket
30	Limit Disc
31	Rotary Switch Assembly
37	Actuator O-ring and Gasket Repair Kit
52	Gear Shaft
83	Needle Bearing
84	Thrust Washer



ACTUATOR
O-RING & GASKET
REPAIR KIT

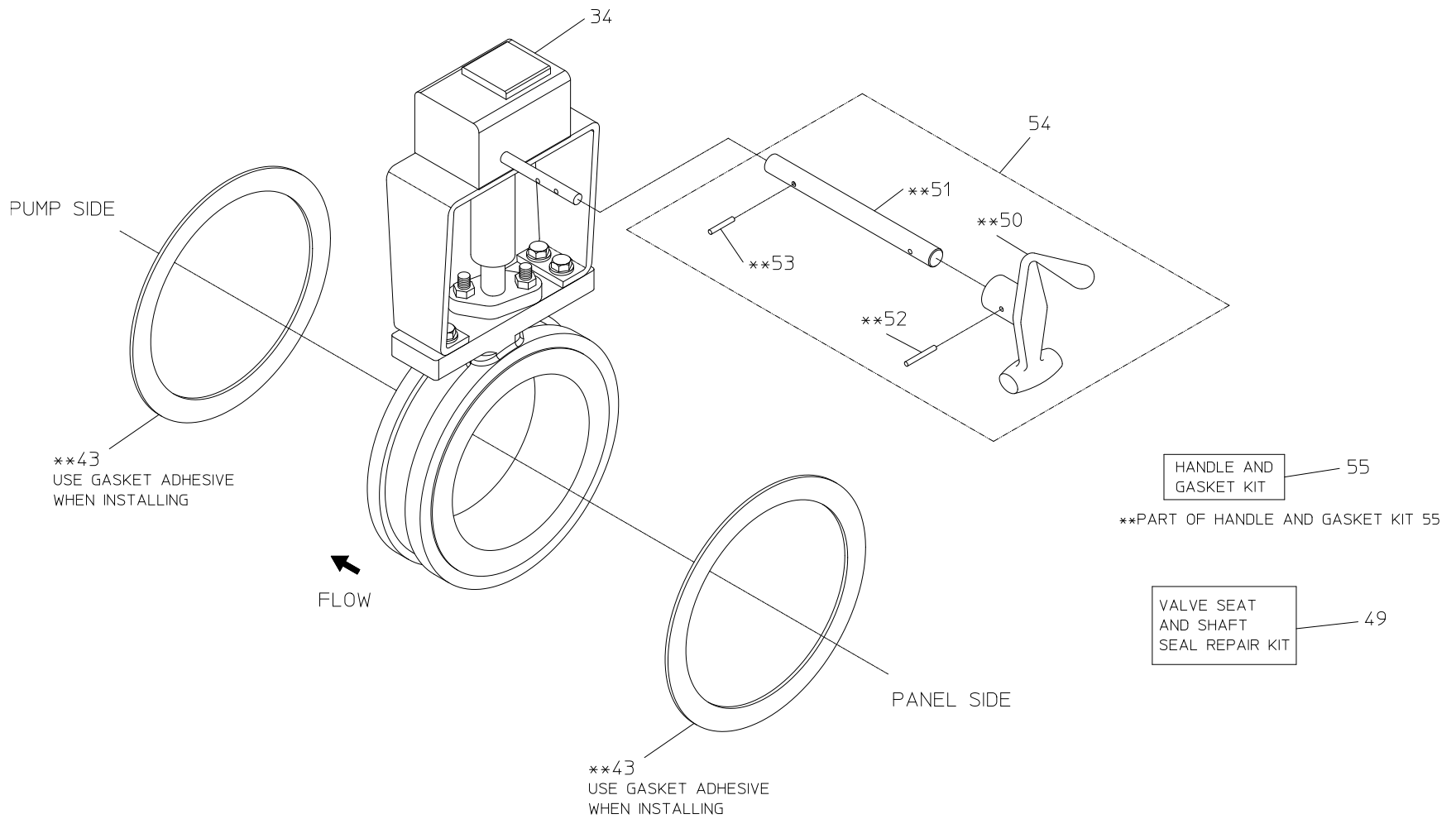
* PART OF REPAIR KIT 37



Manual Non-Indicating Valve

REF. NO.	DESCRIPTION
34	Manual Butterfly Valve (Includes Actuator)
43	Valve Gasket
49	Valve Seat and Shaft Seal Repair Kit
50	Control Handle
51	Shaft Extension

REF. NO.	DESCRIPTION
52	Spring Pin, 3/16 x 1-1/4 in.
53	Spring Pin, 3/16 x 1 in.
54	Handle Kit (Includes 50, 51, 52, 53)
55	Handle and Gasket Kit (Includes 43, 50, 51, 52, 53)



MANUAL NON-INDICATING VALVE