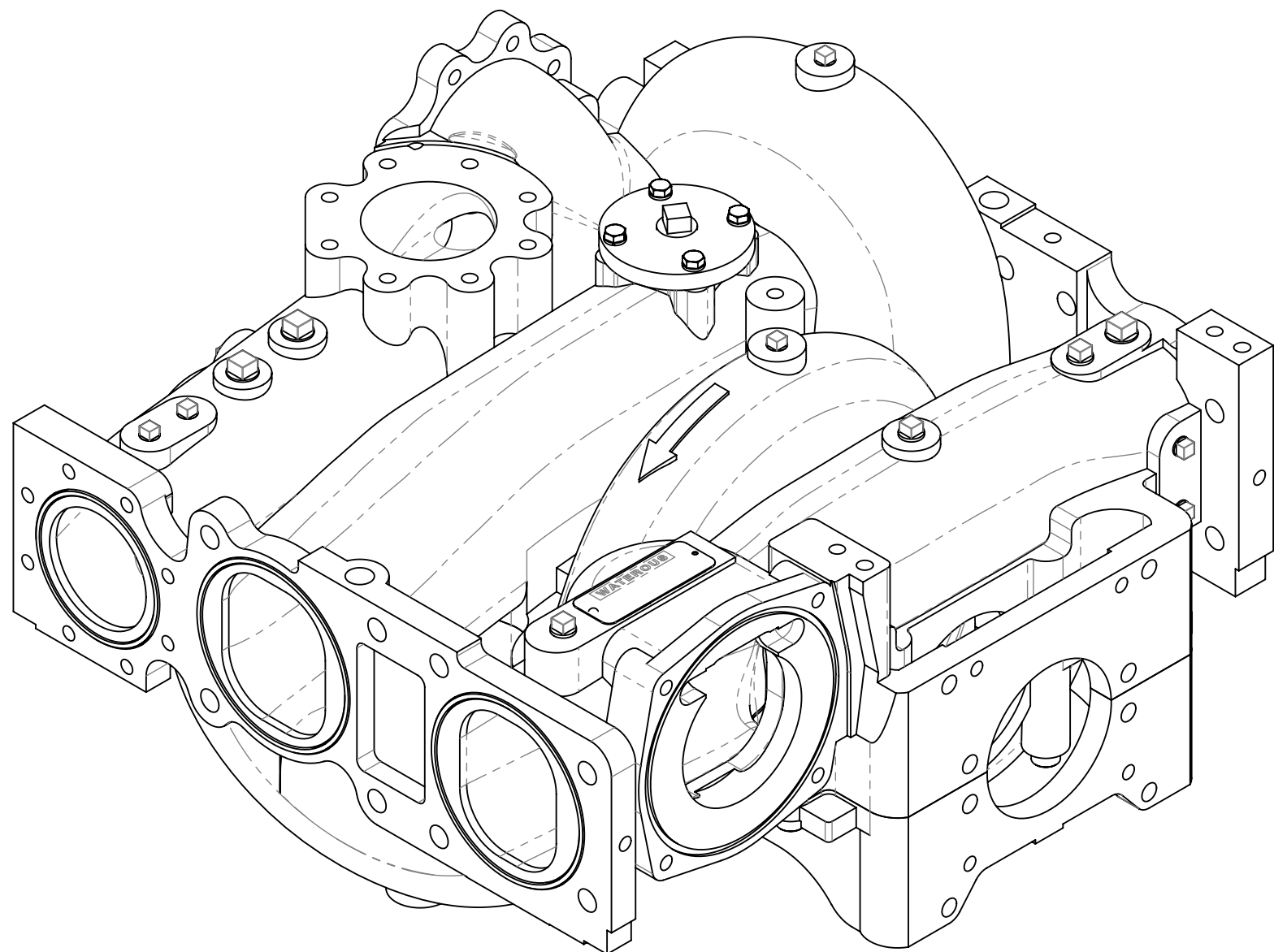


CS Body Assembly Service Parts List

CS'04 Body Style

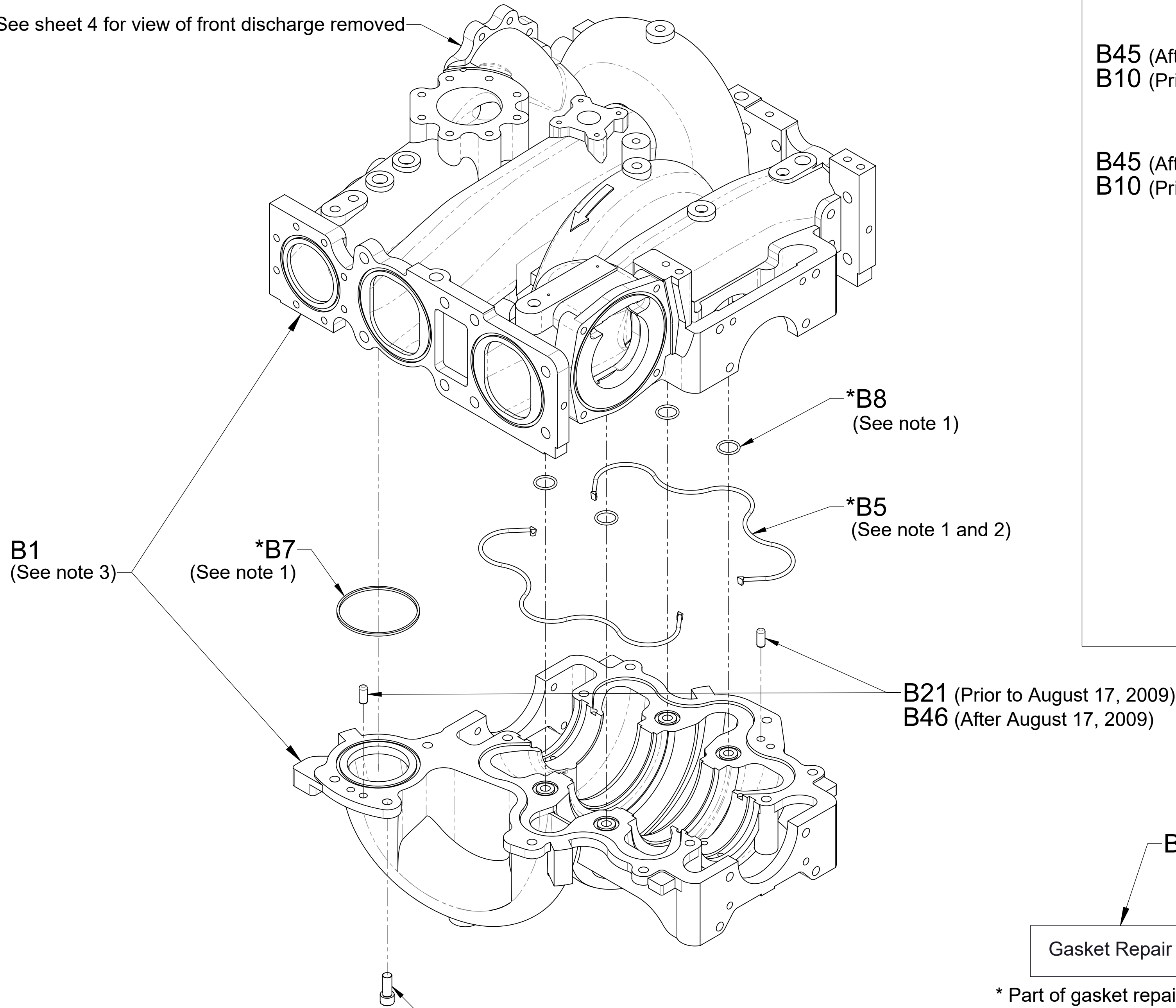
| Description | See Page |
|---|----------|
| Body to Cover Hardware and Molded Gaskets | 2 |
| Body/Cover Components | 3 |
| Plugged Front Discharge (CSH/CSUH) | 4 |
| Intake Adapters | 5 |
| Tank to Pump Flange Fittings | 6 |



| Ref No. | Description |
|---------|---|
| B1 | Body/Cover Subassembly |
| *B5 | Gasket-Molded |
| *B7 | Gasket - Flange, Discharge |
| *B8 | O-Ring, 1 x 1-1/4 in |
| B10 | Screw-Cap, Hex Soc Hd, 1/2-13 x 1-1/2 in (Prior to March 3, 2009) |
| B11 | Screw-Cap, Hex Soc Hd, 1/2-13 x 4 in |
| B12 | Screw-Cap, Hex Soc Hd, 1/2-13 x 4-3/4 in (Prior to March 3, 2009) |
| B21 | Pin-Dowel, 7/16 x 1-1/4 in (Prior to August 17, 2009) |
| B26 | Gasket Repair Kit (Includes B5, B6, B7, B8, B41) |
| B45 | Screw-Cap, Hex Soc Hd, 1/2-13 x 1-1/4 in (After March 3, 2009) |
| B46 | Pin-Dowel, 7/16 x 1 in (After August 17, 2009) |

* Part of gasket repair kit B26

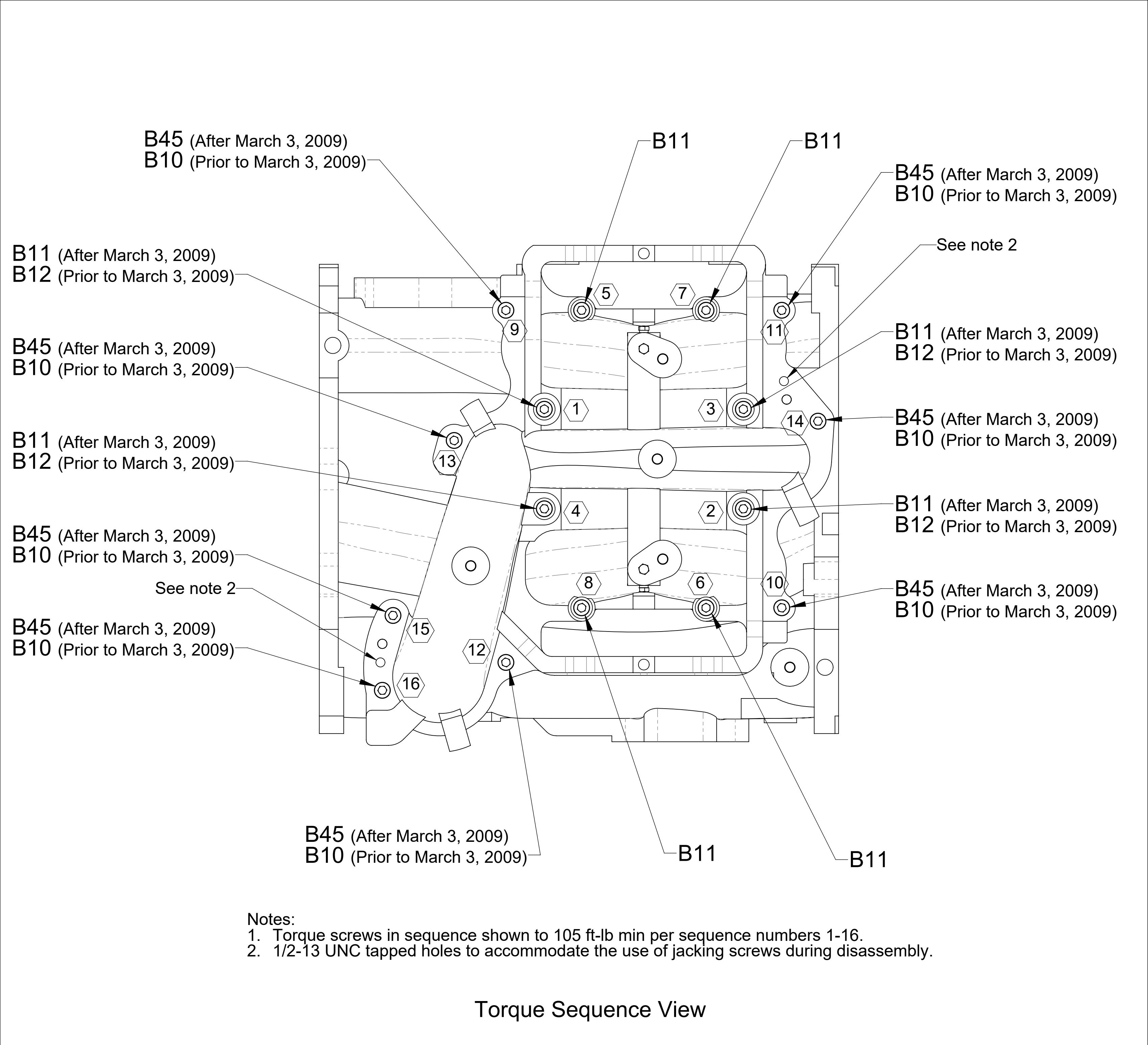
See sheet 4 for view of front discharge removed



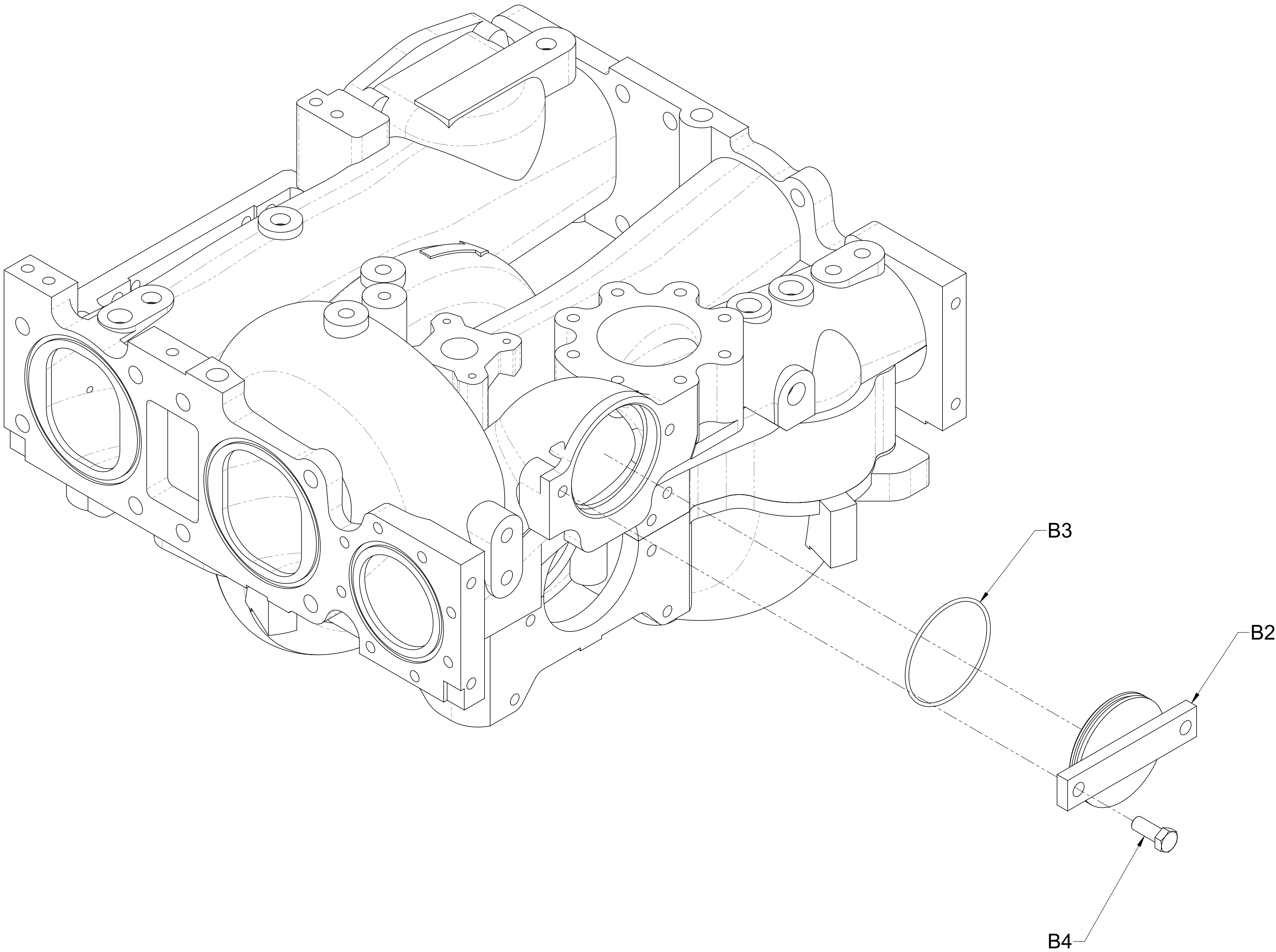
See torque sequence view for screw part numbers and locations

Body to Cover Hardware and Molded Gaskets

- Notes:
- 1. Apply a small amount of grease to o-rings and "S" shaped portion of gasket to hold in place during assembly.
 - 2. Apply silicone sealant to flat faces of the gasket where it comes into contact with the seal housing o-ring.
 - 3. (B1) Body/cover subassembly will appear different on pumps built prior to March 3, 2009.



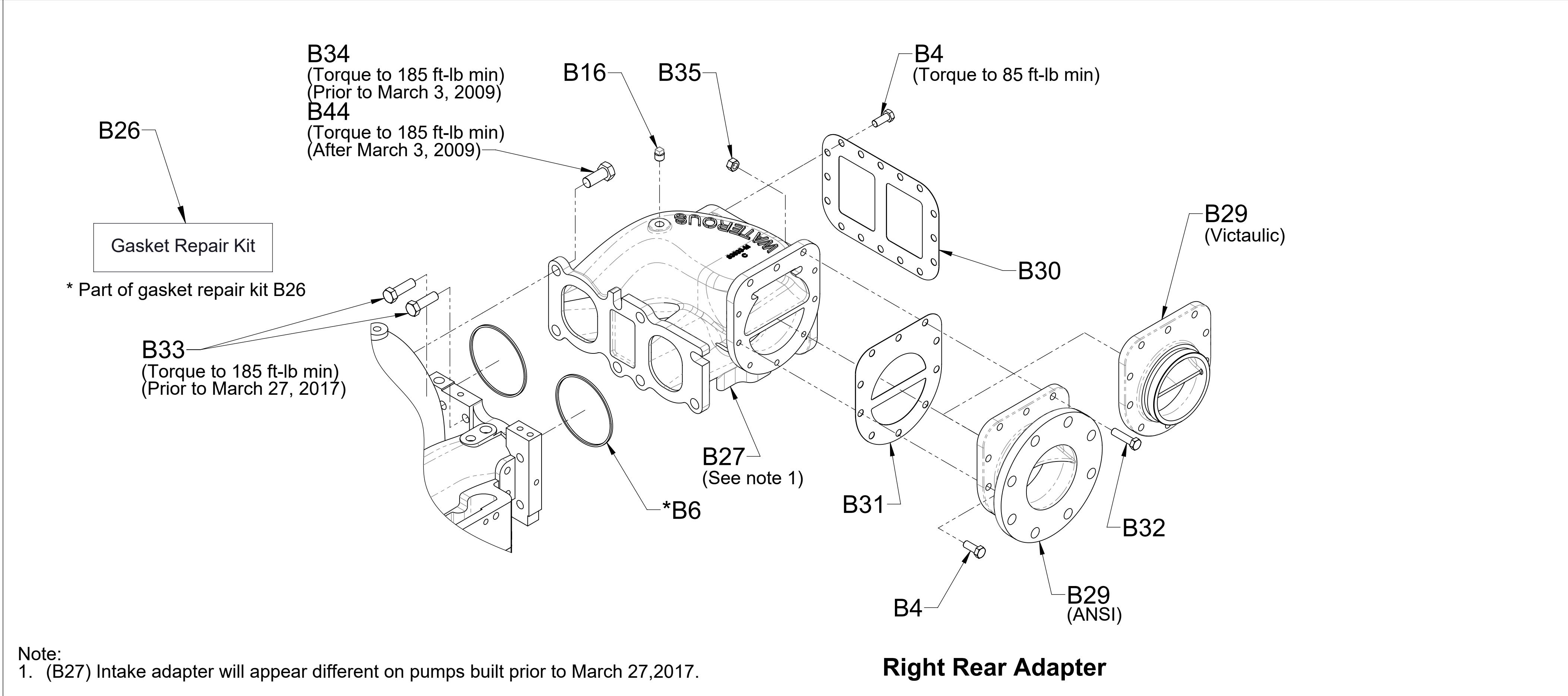
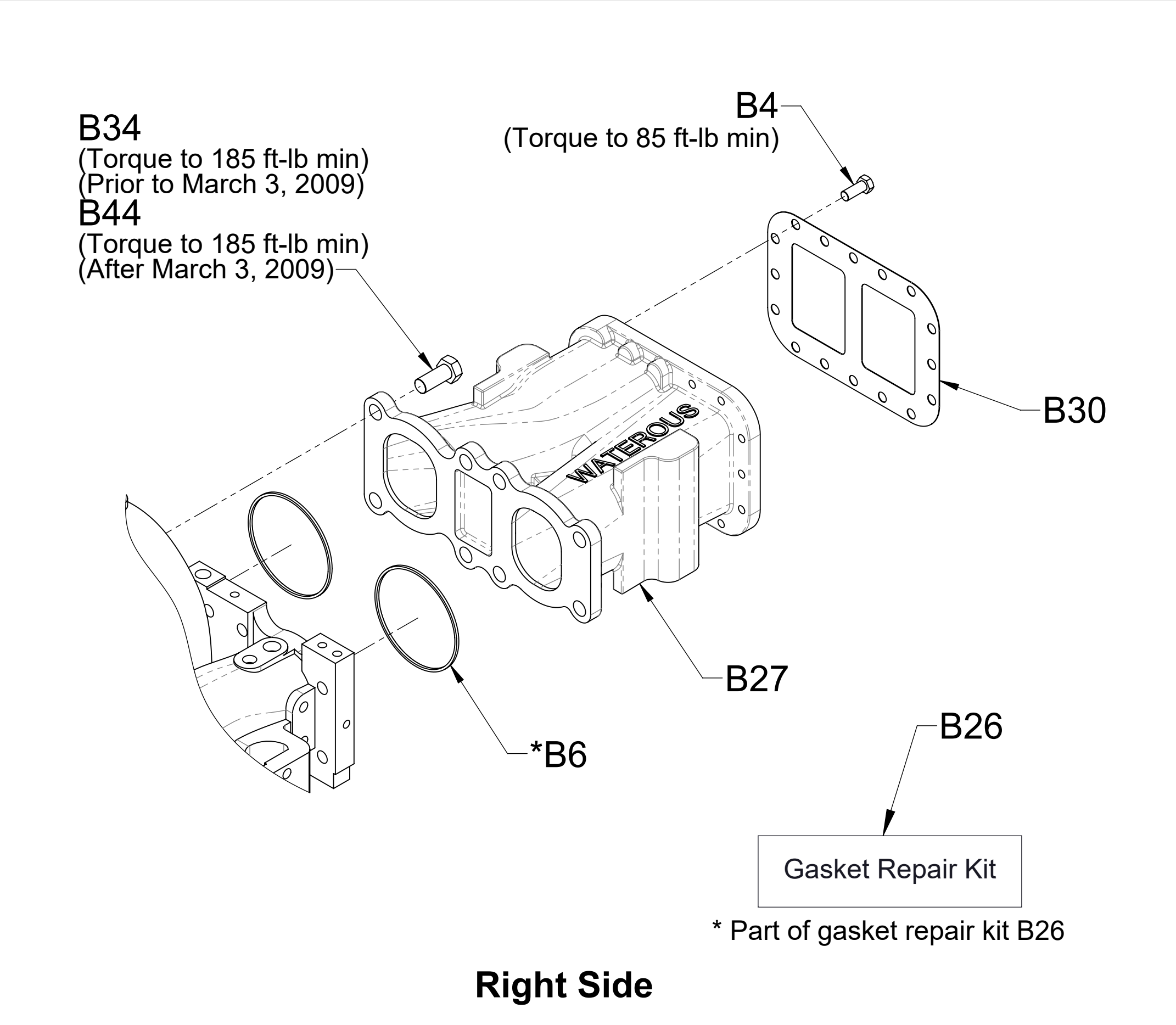
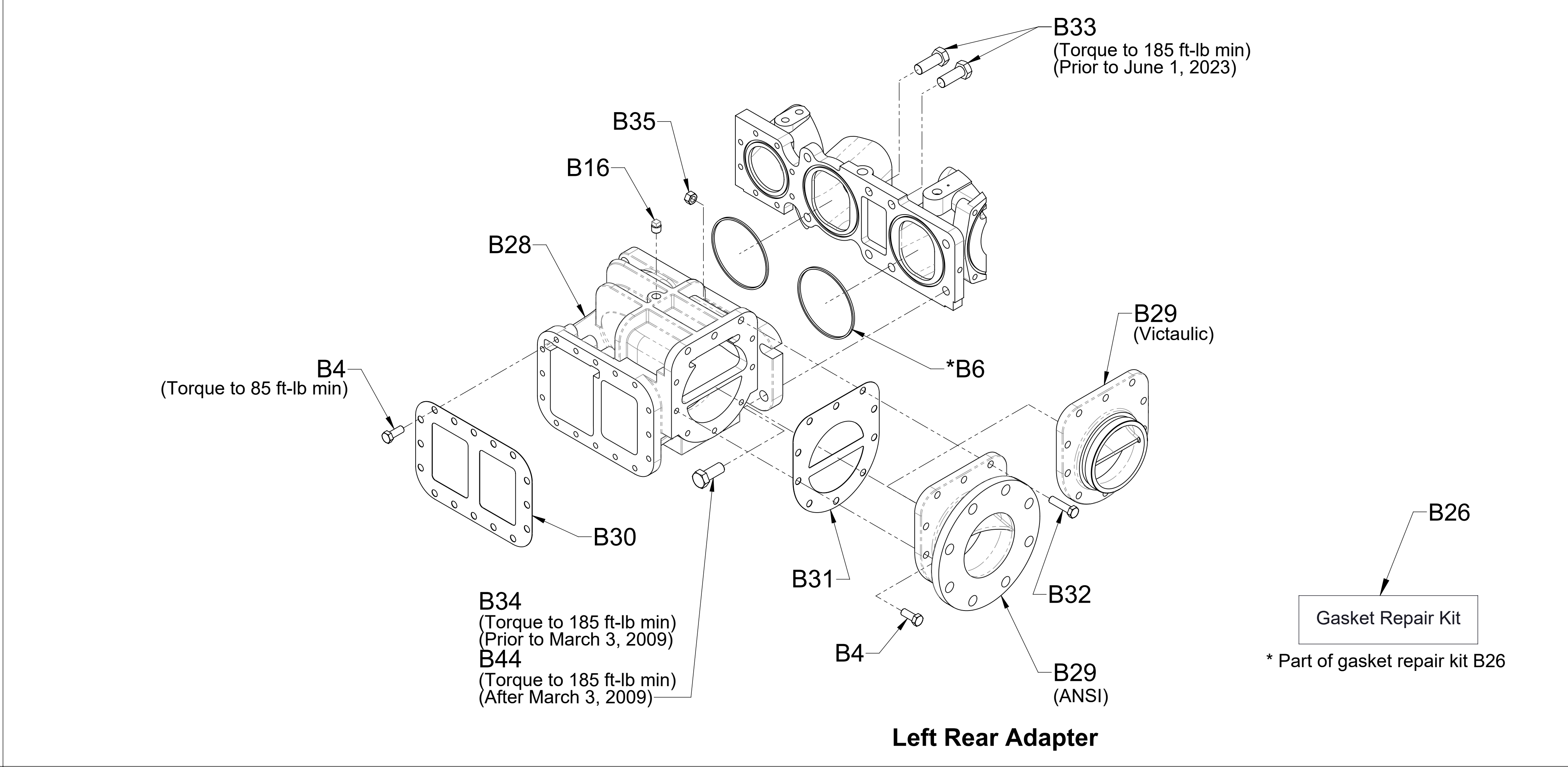
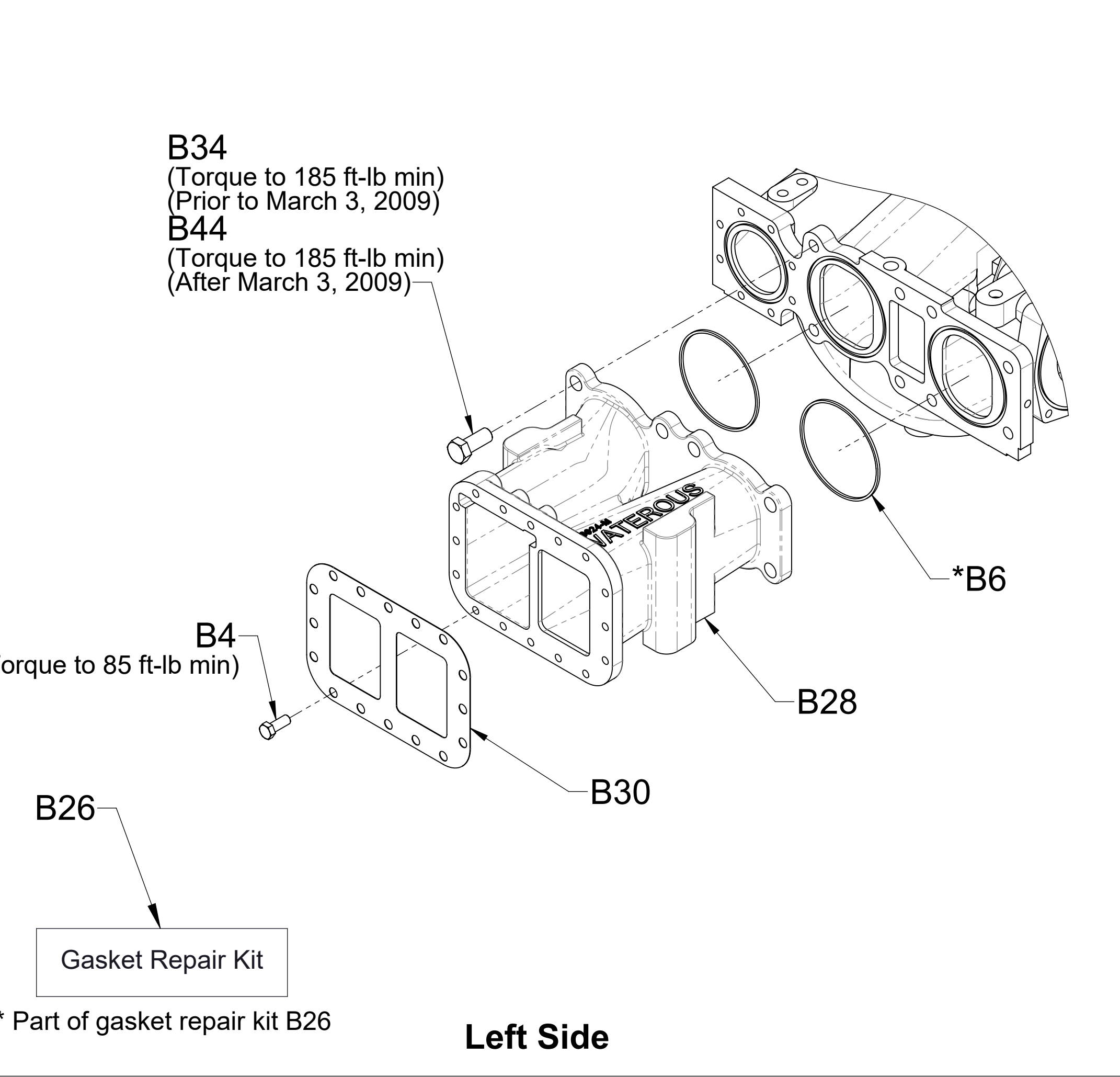
| Ref No. | Description |
|---------|---------------------------------|
| B2 | Plug-Front Discharge |
| B3 | O-Ring, 3-3/4 X 4 in |
| B4 | Screw-Hex Hd, 1/2-13 x 1-1/4 in |



Plugged Front Discharge
CSH/CSUH

| Ref No. | Description | Ref No. | Description | Ref No. | Description |
|---------|--|---------|-------------------------------------|---------|---|
| B4 | Screw-Hex Hd, 1/2-13 x 1-1/4 in | B28 | Adapter-Intake, LH | B32 | Screw-Hex Hd, 1/2-20 x 2 in |
| *B6 | Gasket, Suction Flange | B29 | Fitting-Rear Intake, 5 in ANSI | B33 | Screw-Hex Hd, 5/8-11 x 2 in |
| B16 | Plug-Pipe, Square Hd, 3/8 NPT | B29 | Fitting-Rear Intake, 5 in Victaulic | B34 | Screw-Hex Hd, 3/4-10 x 2 in (Prior to March 3, 2009) |
| B26 | Gasket Repair Kit (Includes B5, B6, B7, B8, B41) | B30 | Gasket-Fitting, Intake, Large | B35 | Nut-Hex, 1/2-20 |
| B27 | Adapter-Intake, RH | B31 | Gasket-Intake Fitting | B44 | Screw-Hex Hd, 3/4-10 x 1-3/4 in with Threadlocker (After March 3, 2009) |

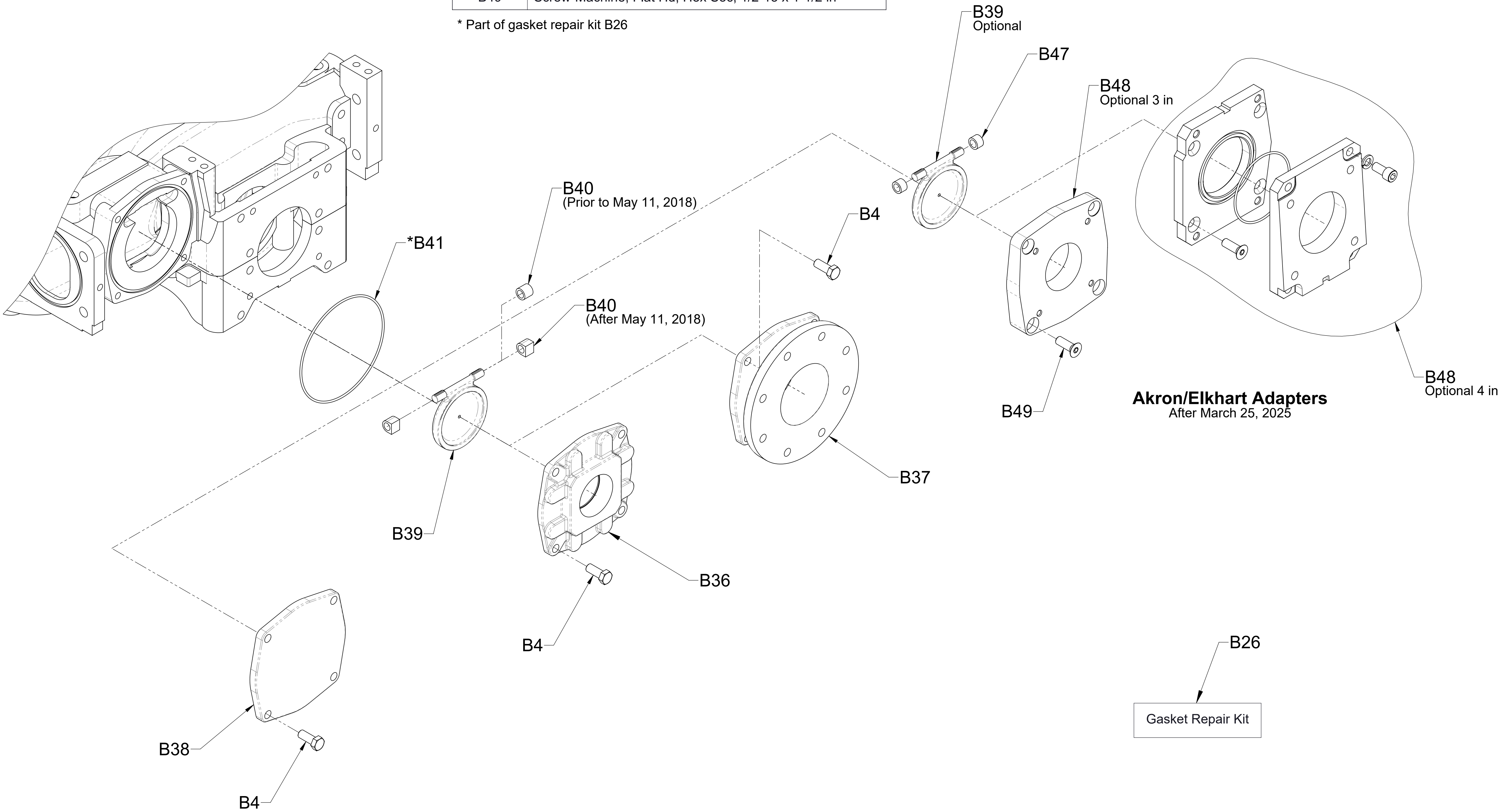
* Part of gasket repair kit B26



Note:
1. (B27) Intake adapter will appear different on pumps built prior to March 27,2017.

| Ref No. | Description |
|---------|--|
| B4 | Screw-Hex Hd, 1/2-13 x 1-1/4 in |
| B26 | Gasket Repair Kit (Includes B5, B6, B7, B8, B41) |
| B36 | Adapter-Intake, Tank, 2-1/2 NPT |
| B36 | Adapter-Intake, Tank, 3 NPT |
| B37 | Adapter-Intake. Tank, 4 in ANSI |
| B38 | Flange-Blind |
| B39 | Valve-Check |
| B40 | Bushing-Check Valve |
| *B41 | O-Ring, 6-3/4 x 7 in |
| B47 | Bearing-Plain, TFE |
| B48 | Adapter-Tank to Pump, 3 in Adapter-Tank to Pump, 4 in |
| B49 | Screw-Machine, Flat Hd, Hex Soc, 1/2-13 x 1-1/2 in |

* Part of gasket repair kit B26



Tank to Pump Flange Fittings