



|                                    |                               |                              |
|------------------------------------|-------------------------------|------------------------------|
| Document Number<br><b>SPL82821</b> | Issue Date<br><b>10/04/05</b> | Rev. Date<br><b>10/11/18</b> |
|------------------------------------|-------------------------------|------------------------------|

## TC10 Series P.T.O. Service Parts List

(Used with Eclipse ES CAFS)

| Components    |  |                       |                           | See Page |
|---------------|--|-----------------------|---------------------------|----------|
| Case Assembly | Viewed from Input Side   |                       |                           | 1, 2     |
|               | Viewed from Output Side  |                       |                           | 3, 4     |
|               | Spacers and Shims  |                       |                           | 5, 6     |
|               | Hardware   | Lower Section of Case |                           | 7, 8     |
|               |  | Between Cap and Case  | Model TC10B               | 9, 10    |
|               |  |                       | Model TC10C               | 11, 12   |
|               |  |                       | Model TC10D, TC10E, TC10F | 13, 14   |
| Driveline     | Input and Output Shaft   |                       |                           | 15, 16   |
|               | Input Shaft Only   |                       |                           | 17, 18   |
| Output Shaft  | Single Output to the Rear (Output Shaft Side)<br>(See Service Parts List SPL82654 for Eclipse ES Air Compressor) |                       |                           | 19, 20   |

**Note: When ordering parts please supply P.T.O. serial number.**

## Case Assembly – Input Side of Case

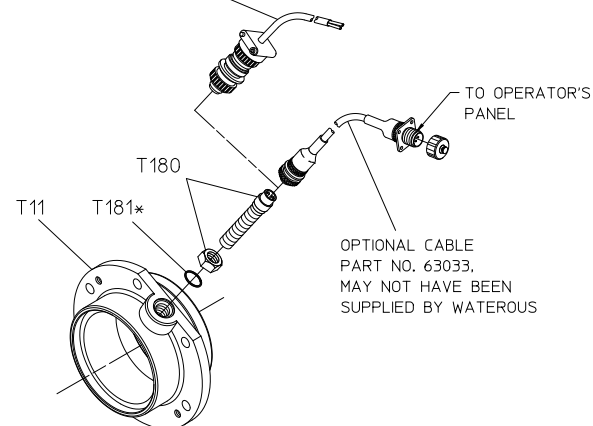
| REF NO. | DESCRIPTION  |
|---------|--|
| T9      | Lock Washer, M10                                   |
| T11     | Drive Shaft Housing                                |
| T27     | Breather, 1/2 NPT                                  |
| T28     | Chain Case Assembly                                |
| T46     | Shift Shaft  |
| T51     | Heavy Spirol Pin, 5/16 x 1-3/8 in.                 |
| T58     | Magnetic Drain Plug, 3/4-16 (Includes O-ring T181) |
| T59     | Spring Housing                                     |
| T60     | Heavy Spirol Pin, 1/4 x 1-1/4 in.                  |
| T61     | Shift Lock Spring                                  |
| T62     | Shift Arm  |

| REF NO. | DESCRIPTION                  |
|---------|------------------------------|
| T65     | Case Cap                     |
| T99     | Spacer (.010, .025, .031)    |
| T100    | Spacer                       |
| T135    | Hex Hd Screw, M10 x 25 mm    |
| T136    | Hex Hd Screw, M10 x 20 mm    |
| T141    | Gasket Repair Kit            |
| T180    | Magnetic Tach Pickup         |
| T181    | O-ring, 5/8 x 3/4 in.        |
| T245    | O-ring, 5-1/4 x 5-1/2 in.    |
| T246    | Socket Hd Screw, M10 x 25 mm |
| T253    | Set Screw, 5/8-18 x 5/8 in.  |
| T254    | V-ring Seal                  |

### Hardware Torque Specifications:

| Screw Size | Torque Specifications |
|------------|-----------------------|
| M10        | 36-40 lb-ft           |
| M12        | 64-69 lb-ft           |

OPTIONAL CABLE  
PART NO. V 3398.  
MAY NOT HAVE BEEN  
SUPPLIED BY WATEROUS



OPTIONAL ELECTRONIC  
TACHOMETER

T11  
PRIOR TO  
MARCH 28, 2008

T253  
AFTER  
MARCH 28, 2008

WITHOUT TACHOMETER

T246  
AFTER  
AUGUST 28, 2006

T135  
PRIOR TO  
AUGUST 28, 2006

T100  
CONFIGURATION SHOWN  
FOR MODEL TC10C. SEE  
PAGES 5 AND 6 FOR  
SPECIFIC SPACER DETAILS

DRAIN VALVE  
MOUNTING PAD

T9

T245\*

APPLY LOCTITE #242  
(BLUE) TO THREADS

T11  
AFTER  
MARCH 28, 2008

T9

T65

SEE PAGES 9 THROUGH 14  
FOR FLANGE HARDWARE

T254  
AFTER  
JULY 14, 2008

T51

T62

T27

T59

T60

T61

T46

SEE PAGES 15 AND 18  
FOR SPECIFIC  
DRIVELINE DETAILS

T99

SEE PAGES 5 AND 6 FOR  
SPECIFIC SPACER  
DETAILS

T28

FURNISHED WITH PIVOT PIN (T37),  
O-RINGS (T39 & T49), SPIROL PIN (T60),  
SLEEVE BEARINGS (T112 & T190),  
SERIAL PLATE (T139), DRIVE SCREWS (T140),  
V-RING SEAL (T254) AND FLANGE BEARING (T255)

T181\*

T58

SEE PAGES 7 AND 8 FOR CASE  
FLANGE HARDWARE

PRIMING PUMP  
MOUNTING PADS

T141

GASKET AND  
SHIM REPAIR KIT

\*PART OF T141 GASKET  
AND SHIM REPAIR KIT

# **CASE ASSEMBLY – INPUT SIDE OF CASE**

\*C" DROP SHOWN (MODEL TC10C)

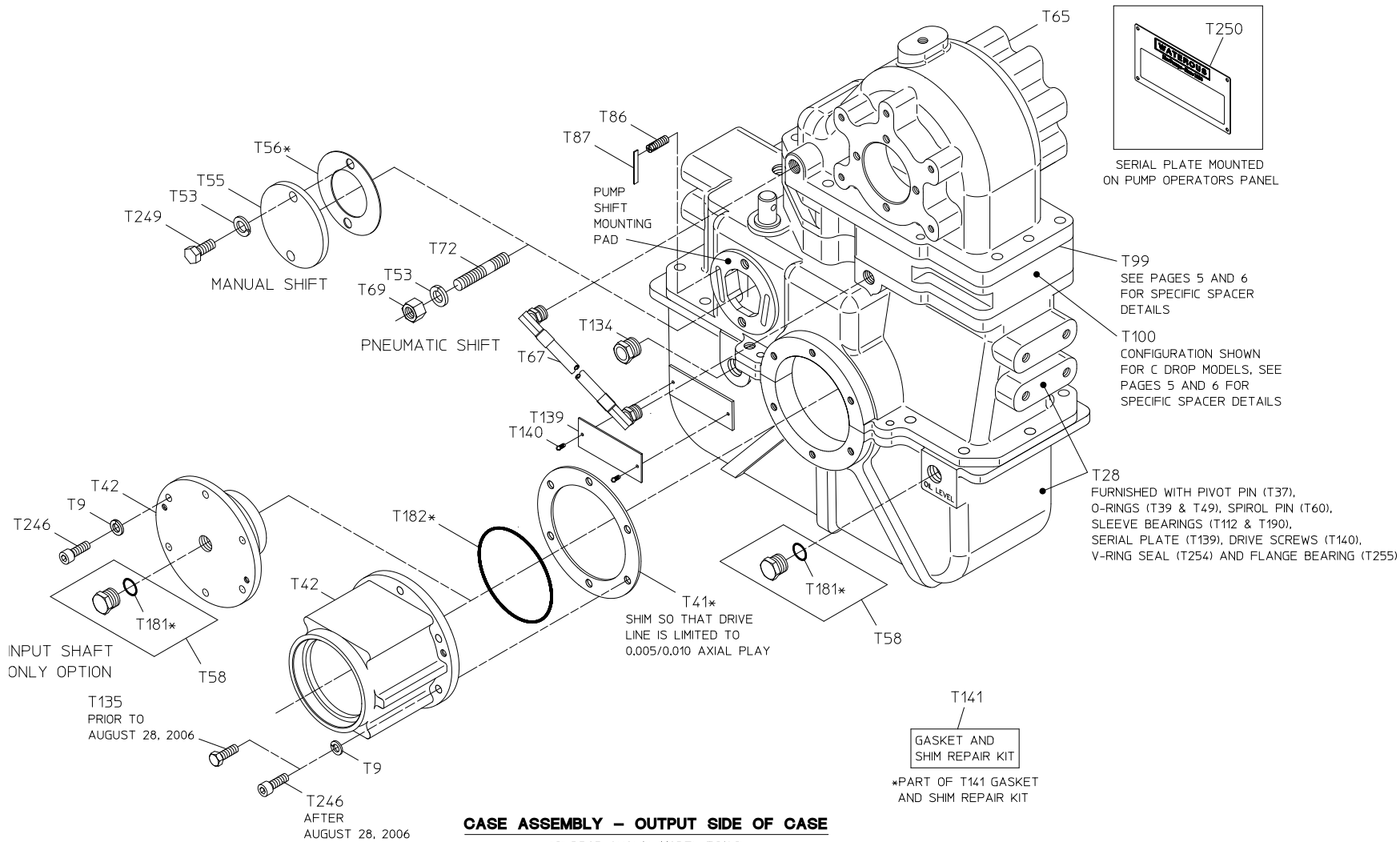
## Case Assembly – Output Side of Case

| REF NO. | DESCRIPTION  |
|---------|--|
| T9      | Lock Washer, M10                                   |
| T28     | Chain Case Assembly                                |
| T41     | Aluminum Shim (.005, .007, .010)                   |
| T42     | Coupling Shaft Housing                             |
| T53     | Lock Washer, M12                                   |
| T55     | Shift Cover  |
| T56     | Shift Cover Gasket                                 |
| T58     | Magnetic Drain Plug, 3/4-16 (Includes O-ring T181) |
| T65     | Case Cap   |
| T67     | Hose   |
| T69     | Hex Nut, M12                                       |
| T72     | Threaded Stud, M12 x 35 mm                         |
| T86     | Adjusting Screw                                    |
| T87     | Adjusting Screw Retainer                           |

| REF NO. | DESCRIPTION                     |
|---------|---------------------------------|
| T99     | Spacer (.010, .025, .031)       |
| T100    | Spacer                          |
| T134    | Sight Plug                      |
| T135    | Hex Hd Screw, M10 x 25 mm       |
| T139    | Serial Plate                    |
| T140    | Round Hd Screw, No. 6 x 1/4 in. |
| T141    | Gasket Repair Kit               |
| T181    | O-ring, 5/8 x 3/4 in.           |
| T182    | O-ring, 4-3/4 x 5 in.           |
| T246    | Socket Hd Screw, M10 x 25 mm    |
| T249    | Hex Hd Screw, M12 x 25 mm       |
| T250    | Operator;s Panel Serial Plate   |
|         |                                 |
|         |                                 |

### Hardware Torque Specifications:

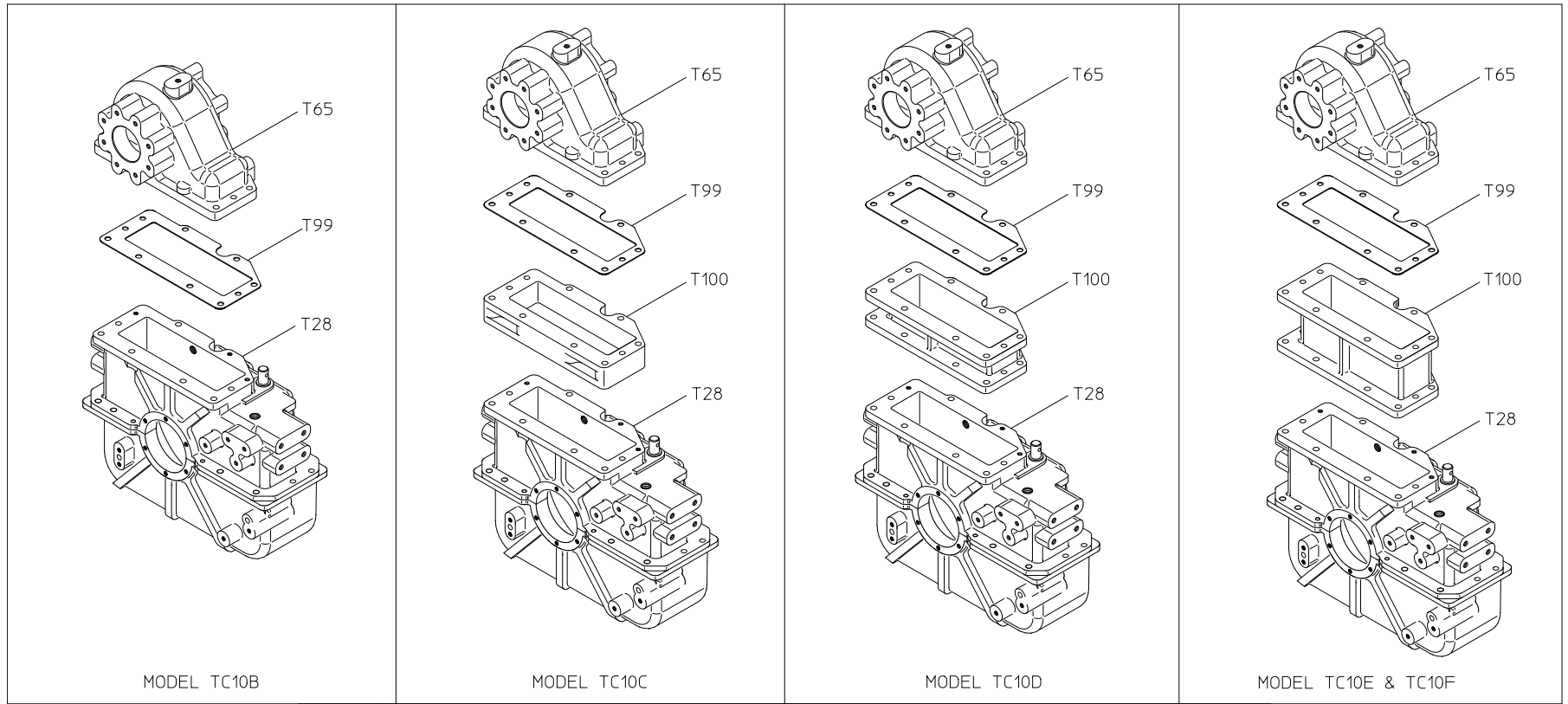
| Screw Size | Torque Specifications |
|------------|-----------------------|
| M10        | 36-40 lb-ft           |
| M12        | 64-69 lb-ft           |



## Case Assembly – Spacers and Shims

| REF NO. | DESCRIPTION         |
|---------|---------------------|
| T28     | Chain Case Assembly |
| T65     | Case Cap            |

| REF NO. | DESCRIPTION               |
|---------|---------------------------|
| T99     | Spacer (.010, .025, .031) |
| T100    | Spacer                    |



| RATIOS | QTY OF T99 SHIMS |               |                |               |               |                |               |               |                |               |               |                |               |               |                |
|--------|------------------|---------------|----------------|---------------|---------------|----------------|---------------|---------------|----------------|---------------|---------------|----------------|---------------|---------------|----------------|
|        | MODEL TC10B      |               |                | MODEL TC10C   |               |                | MODEL TC10D   |               |                | MODEL TC10E   |               |                | MODEL TC10F   |               |                |
|        | .010<br>BROWN    | .025<br>WHITE | .031<br>ORANGE | .010<br>BROWN | .025<br>WHITE | .031<br>ORANGE | .010<br>BROWN | .025<br>WHITE | .031<br>ORANGE | .010<br>BROWN | .025<br>WHITE | .031<br>ORANGE | .010<br>BROWN | .025<br>WHITE | .031<br>ORANGE |
| 1.58   | 0                | 0             | 0              | 2             | 0             | 0              | 1             | 1             | 0              | 0             | 1             | 0              | 0             | 0             | 0              |
| 1.69   | 5                | 0             | 0              | 0             | 0             | 0              | 0             | 1             | 0              | 0             | 1             | 3              | 0             | 4             | 0              |
| 1.79   | 0                | 0             | 2              | 0             | 0             | 0              | 1             | 0             | 0              | 2             | 1             | 1              | 1             | 1             | 1              |
| 1.88   | 2                | 0             | 0              | 0             | 0             | 0              | 0             | 1             | 0              | 1             | 1             | 1              | 0             | 1             | 1              |
| 1.97   | 1                | 1             | 1              | 0             | 0             | 1              | 0             | 1             | 1              | 0             | 2             | 0              | 2             | 1             | 0              |
| 2.03   | 0                | 0             | 0              | 1             | 1             | 0              | 0             | 0             | 2              | 1             | 1             | 0              | 3             | 0             | 0              |
| 2.27   | 0                | 0             | 0              | 0             | 3             | 0              | 0             | 0             | 0              | 0             | 0             | 0              | 0             | 0             | 0              |

**CASE ASSEMBLY – SPACERS AND SHIMS**

## Case Hardware – Lower Section

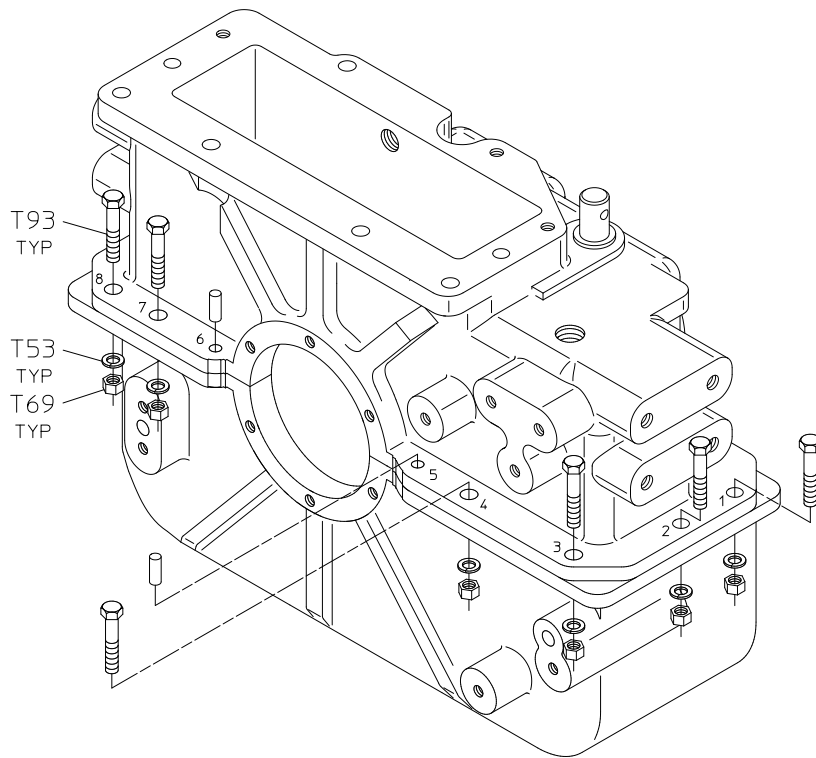
| REF NO. | DESCRIPTION               |
|---------|---------------------------|
| T53     | Lock Washer, M12          |
| T69     | Hex Nut, M12              |
| T71     | Hex Hd Screw, M12 x 60 mm |
| T99     | Spacer (.010, .025, .031) |

| REF NO. | DESCRIPTION                |
|---------|----------------------------|
| T103    | Dowel Pin, 1/2 x 1-1/2 in. |
| T240    | Hex Hd Screw, M12 x 40 mm  |
|         |                            |
|         |                            |

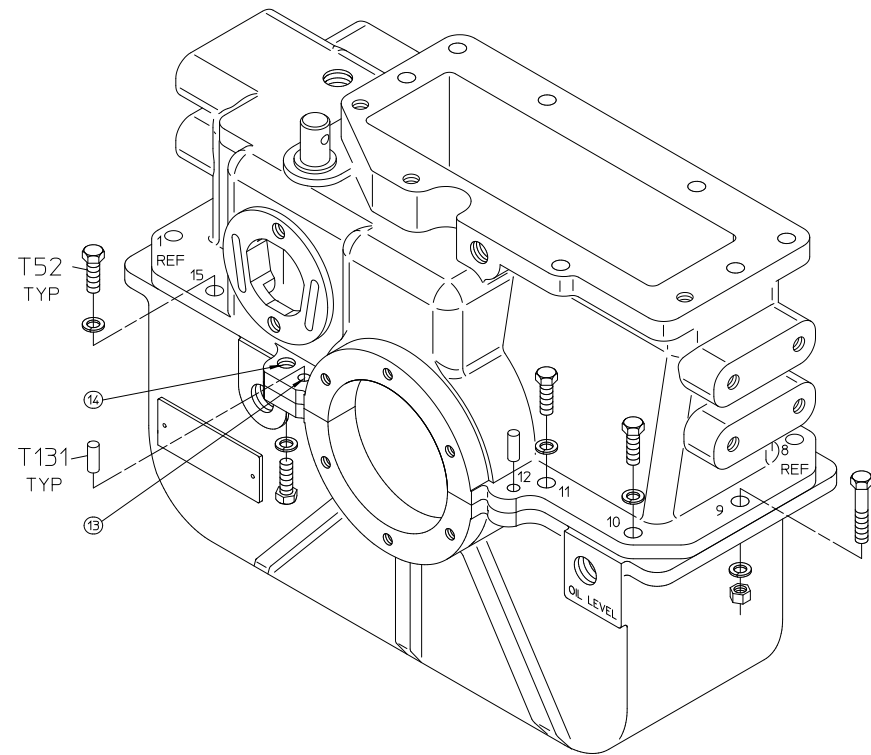
## Hardware Torque Specifications:

| Screw Size | Torque Specifications |
|------------|-----------------------|
| M10        | 36-40 lb-ft           |
| M12        | 64-69 lb-ft           |





**INPUT SIDE OF CASE**



**OUTPUT SIDE OF CASE**

CASE FLANGE HARDWARE

| REF<br>NO. | HARDWARE<br>DESCRIPTION  | HOLE NUMBER |   |   |   |   |   |   |   |   |    |    |    |    |    |    | QTY |
|------------|--------------------------|-------------|---|---|---|---|---|---|---|---|----|----|----|----|----|----|-----|
|            |                          | 1           | 2 | 3 | 4 | 5 | 6 | 7 | 8 | 9 | 10 | 11 | 12 | 13 | 14 | 15 |     |
| T52        | HEX HD SCREW, M12 X 30mm |             |   |   |   |   |   |   |   | 1 | 1  |    |    |    | 1  | 1  | 4   |
| T53        | LOCK WASHER, M12         | 1           | 1 | 1 | 1 |   |   | 1 | 1 | 1 | 1  | 1  |    |    | 1  | 1  | 11  |
| T69        | HEX NUT, M12             | 1           | 1 | 1 | 1 |   |   | 1 | 1 | 1 |    |    |    |    |    |    | 7   |
| T93        | HEX HD SCREW, M12 X 45mm | 1           | 1 | 1 | 1 |   |   | 1 | 1 | 1 |    |    |    |    |    |    | 7   |
| T131       | DOWEL PIN, 3/8 X 1"      |             |   |   |   | 1 | 1 |   |   |   |    |    | 1  | 1  |    |    | 4   |

**CASE HARDWARE – LOWER SECTION**

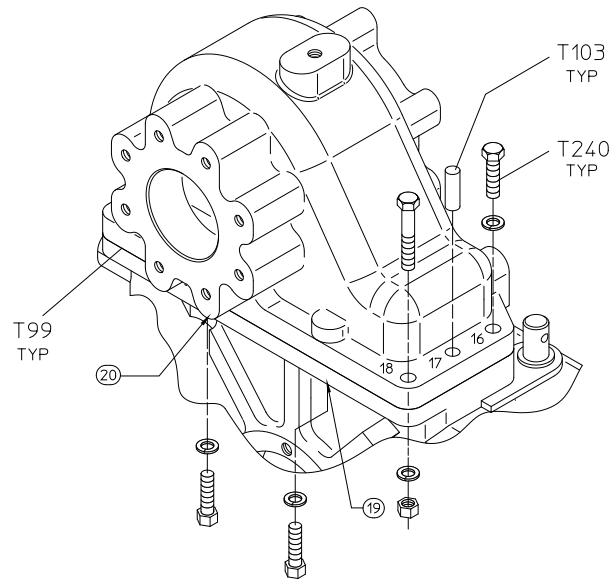
## Case Hardware – Between Cap and Case, Model TC10B

| REF NO. | DESCRIPTION               |
|---------|---------------------------|
| T53     | Lock Washer, M12          |
| T69     | Hex Nut, M12              |
| T71     | Hex Hd Screw, M12 x 60 mm |

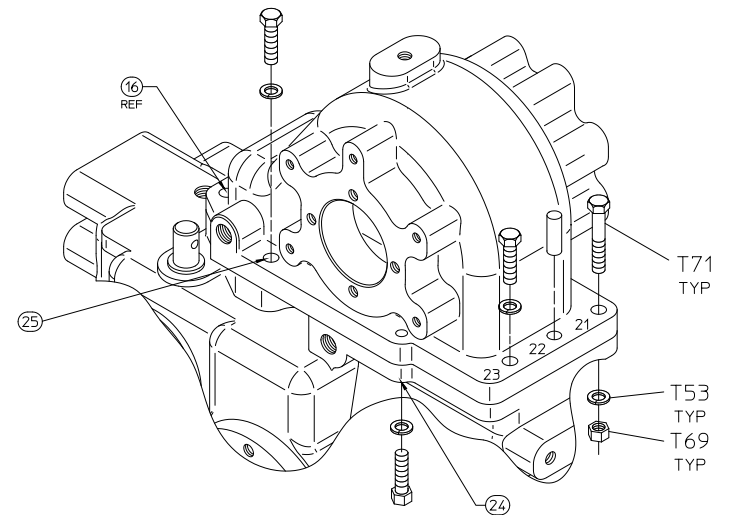
| REF NO. | DESCRIPTION                |
|---------|----------------------------|
| T99     | Spacer (.010, .025, .031)  |
| T103    | Dowel Pin, 1/2 x 1-1/2 in. |
| T240    | Hex Hd Screw, M12 x 40 mm  |

### Hardware Torque Specifications:

| Screw Size | Torque Specifications |
|------------|-----------------------|
| M10        | 36-40 lb-ft           |
| M12        | 64-69 lb-ft           |



**INPUT SIDE OF CASE**



**OUTPUT SIDE OF CASE**

FLANGE HARDWARE BETWEEN CAP (T65) AND CASE (T28)

| REF NO. | HARDWARE DESCRIPTION     | HOLE NUMBER |    |    |    |    |    |    |    |    |    | QTY |
|---------|--------------------------|-------------|----|----|----|----|----|----|----|----|----|-----|
|         |                          | 16          | 17 | 18 | 19 | 20 | 21 | 22 | 23 | 24 | 25 |     |
| T53     | LOCKWASHER, M12          | 1           |    | 1  | 1  | 1  | 1  |    | 1  | 1  | 1  | 8   |
| T69     | HEX NUT, M12             |             |    | 1  |    |    | 1  |    |    |    |    | 2   |
| T71     | HEX HD SCREW, M12 X 60mm |             |    | 1  |    |    | 1  |    |    |    |    | 2   |
| T103    | DOWEL PIN, 1/2 X 1 1/2   |             | 1  |    |    |    |    | 1  |    |    |    | 2   |
| T240    | HEX HD SCREW, M12 X 40mm | 1           |    |    | 1  | 1  |    |    | 1  | 1  | 1  | 6   |

NOTE:  
HOLES 19, 20 AND 24 ARE BLIND HOLES THAT ARE  
TAPPED INTO THE CAP AND ARE NOT SHOWN.

**CASE HARDWARE – BETWEEN CAP AND CASE, MODEL TC10B**

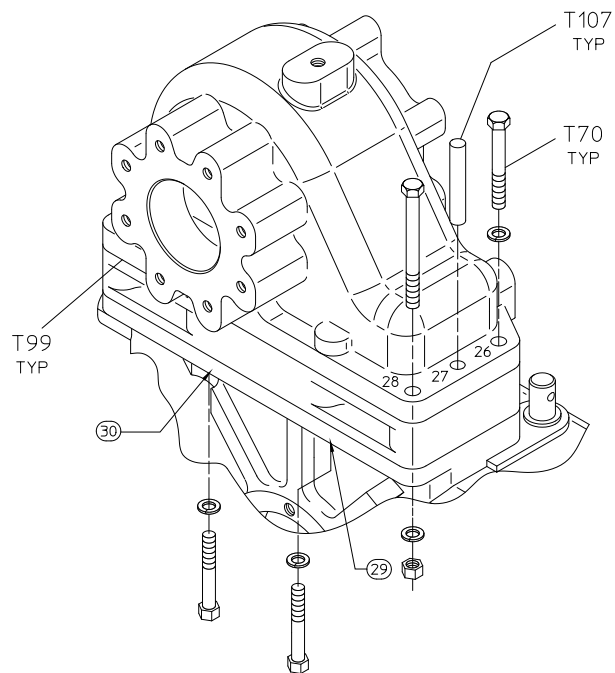
## Case Hardware – Between Cap and Case, Model TC10C

| REF NO. | DESCRIPTION                |
|---------|----------------------------|
| T53     | Lock Washer, M12           |
| T68     | Hex Hd Screw, M12 x 100 mm |
| T69     | Hex Nut, M12               |
| T70     | Hex Hd Screw, M12 x 90 mm  |

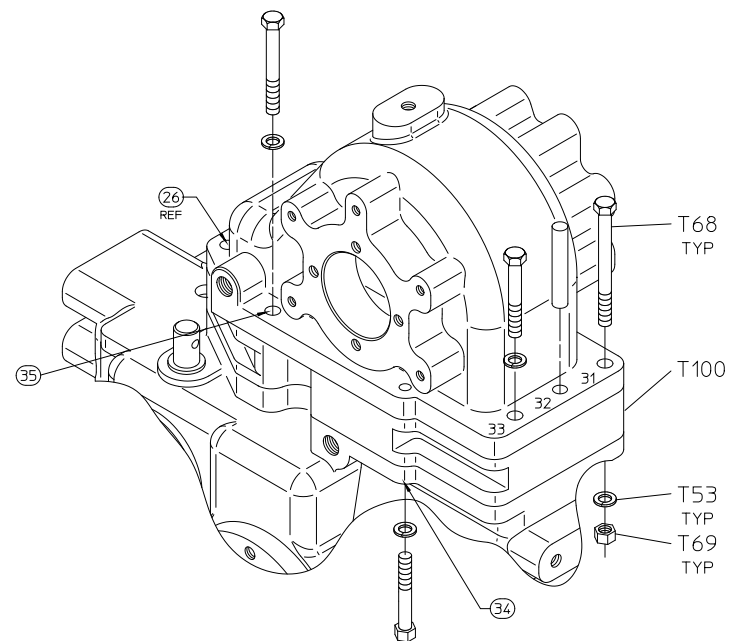
| REF NO. | DESCRIPTION               |
|---------|---------------------------|
| T99     | Spacer (.010, .025, .031) |
| T100    | Spacer                    |
| T107    | Dowel Pin, 1/2 x 3 in.    |
|         |                           |

### Hardware Torque Specifications:

| Screw Size | Torque Specifications |
|------------|-----------------------|
| M10        | 36-40 lb-ft           |
| M12        | 64-69 lb-ft           |



**INPUT SIDE OF CASE**



**OUTPUT SIDE OF CASE**

NOTE:  
HOLES 29, 30 AND 34 ARE BLIND HOLES THAT ARE  
TAPPED INTO THE CAP AND ARE NOT SHOWN.

FLANGE HARDWARE BETWEEN CAP (T65) AND CASE (T28)

| REF<br>NO. | HARDWARE<br>DESCRIPTION   | HOLE NUMBER |    |    |    |    |    |    |    |    |    | QTY |
|------------|---------------------------|-------------|----|----|----|----|----|----|----|----|----|-----|
|            |                           | 26          | 27 | 28 | 29 | 30 | 31 | 32 | 33 | 34 | 35 |     |
| T53        | LOCKWASHER, M12           | 1           |    | 1  | 1  | 1  | 1  |    | 1  | 1  | 1  | 8   |
| T68        | HEX HD SCREW, M12 X 100mm |             |    | 1  |    |    | 1  |    |    |    |    | 2   |
| T69        | HEX NUT, M12              |             |    | 1  |    |    | 1  |    |    |    |    | 2   |
| T70        | HEX HD SCREW, M12 X 90mm  | 1           |    |    | 1  | 1  |    |    | 1  | 1  | 1  | 6   |
| T107       | DOWEL PIN, 1/2 X 3        |             | 1  |    |    |    |    | 1  |    |    |    | 2   |

**CASE HARDWARE – BETWEEN CAP AND CASE, MODEL TC10C**

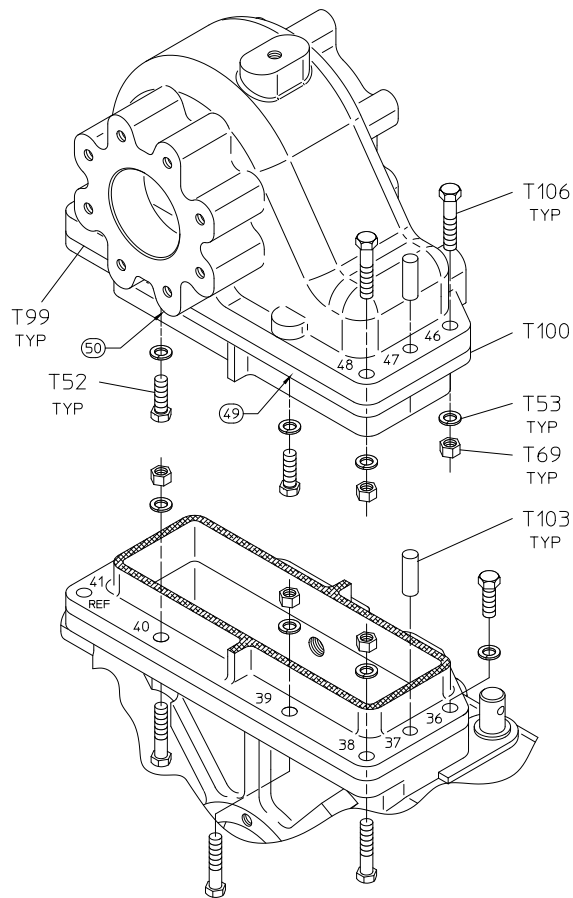
## Case Hardware – Between Cap and Case, Models TC10D, TC10E & TC10F

| REF NO. | DESCRIPTION               |
|---------|---------------------------|
| T52     | Hex Hd Screw, M12 x 30 mm |
| T53     | Lock Washer, M12          |
| T69     | Hex Nut, M12              |
| T99     | Spacer (.010, .025, .031) |

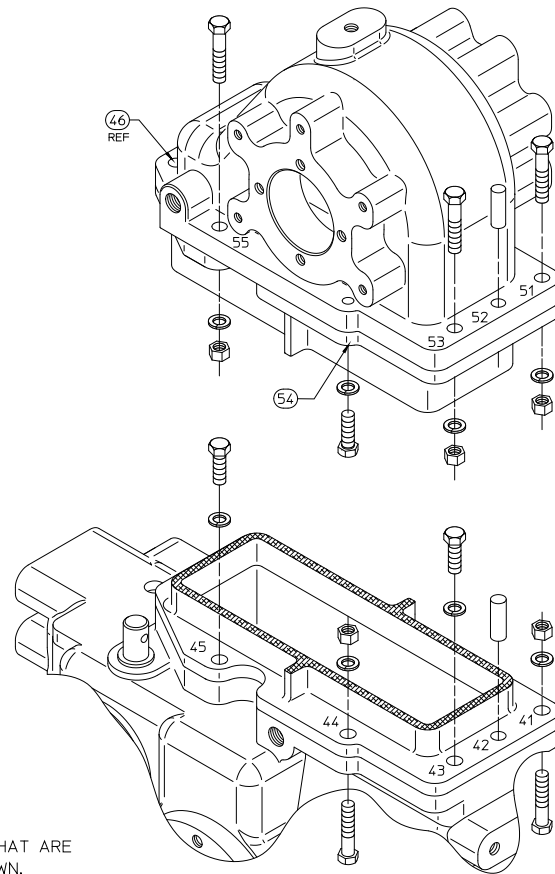
| REF NO. | DESCRIPTION                |
|---------|----------------------------|
| T100    | Spacer                     |
| T103    | Dowel Pin, 1/2 x 1-1/2 in. |
| T106    | Hex Hd Screw, M12 x 50 mm  |
|         |                            |

### Hardware Torque Specifications:

| Screw Size | Torque Specifications |
|------------|-----------------------|
| M10        | 36-40 lb-ft           |
| M12        | 64-69 lb-ft           |



**INPUT SIDE OF CASE**



**OUTPUT SIDE OF CASE**

NOTE:  
HOLES 49, 50 AND 54 ARE BLIND HOLES THAT ARE  
TAPPED INTO THE CAP AND ARE NOT SHOWN.

FLANGE HARDWARE BETWEEN CAP (T65) AND CASE (T28)

| REF<br>NO. | HARDWARE<br>DESCRIPTION  | HOLE NUMBER |    |    |    |    |    |    |    |    |    |    |    |    |    |    |    |    |    | QTY |
|------------|--------------------------|-------------|----|----|----|----|----|----|----|----|----|----|----|----|----|----|----|----|----|-----|
|            |                          | 36          | 37 | 38 | 39 | 40 | 41 | 42 | 43 | 44 | 45 | 46 | 47 | 48 | 49 | 50 | 51 | 52 | 53 |     |
| T52        | HEX HD SCREW, M12 X 30mm | 1           |    |    |    |    |    |    | 1  |    | 1  |    |    |    | 1  | 1  |    |    | 1  | 6   |
| T53        | LOCKWASHER, M12          | 1           |    | 1  | 1  | 1  | 1  |    | 1  | 1  | 1  | 1  |    | 1  | 1  | 1  |    | 1  | 1  | 16  |
| T69        | HEX NUT, M12             |             |    | 1  | 1  | 1  | 1  |    |    |    | 1  |    | 1  | 1  |    |    | 1  | 1  | 1  | 10  |
| T103       | DOWEL PIN, 1/2 X 1-1/2   |             | 1  |    |    |    |    | 1  |    |    |    |    | 1  |    |    |    |    | 1  |    | 4   |
| T106       | HEX HD SCREW, M12 X 50mm |             |    | 1  | 1  | 1  | 1  |    |    | 1  |    | 1  |    | 1  |    |    | 1  | 1  | 1  | 10  |

**CASE HARDWARE – BETWEEN CAP AND CASE, MODELS TC10D, TC10E & TC10F**

## Driveline – Input and Output Shaft

| REF NO. | DESCRIPTION                |
|---------|----------------------------|
| T2      | Shaft Coupling Spacer      |
| T3      | Ball Bearing               |
| T4      | Shift Collar               |
| T5      | Drive Sprocket             |
| T6      | Needle Bearing             |
| T7      | Thrust Washer              |
| T10     | Tachometer Pulse Generator |
| T13     | Drive Shaft                |
| T15     | Ball Bearing               |
| T18     | Chain                      |
| T26     | Driven Sprocket            |
| T37     | Pivot Pin, 5/8 x 2-3/4 in. |
| T38     | Locking Arm                |
| T39     | O-ring, 1/4 x 3/8 in.      |
| T40     | Shifter Shoe               |
| T43     | Self Locking Nut, 1-1/4-18 |
| T44     | Coupling Shaft             |
| T46     | Shift Shaft                |
| T47     | Sector Gear                |
| T48     | Sector Spacer              |

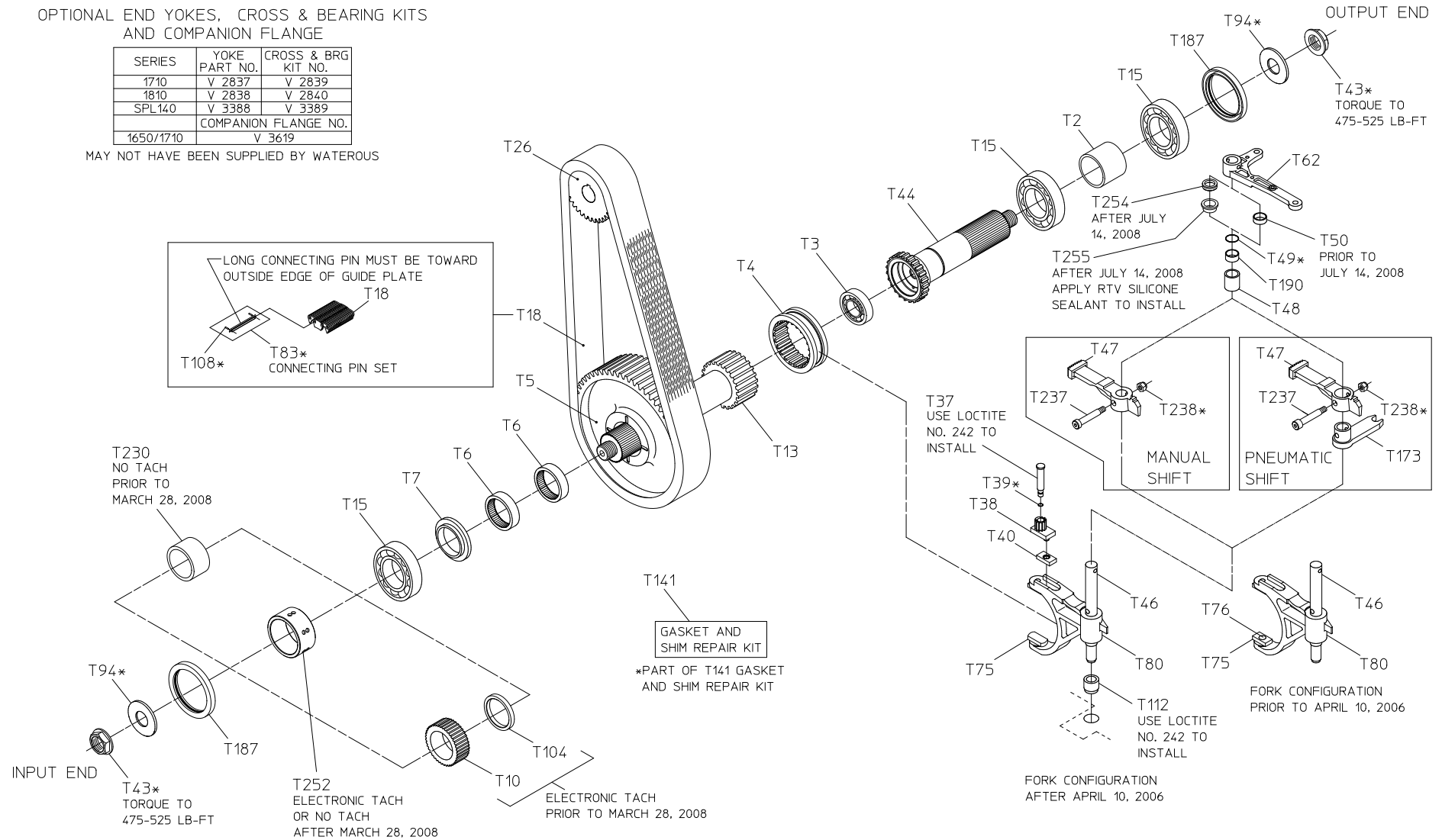
| REF NO. | DESCRIPTION                     |
|---------|---------------------------------|
| T49     | O-ring, 7/8 x 1 in.             |
| T50     | Sleeve Bearing                  |
| T62     | Shift Arm                       |
| T75     | Shifter Shoe                    |
| T76     | Shifter Shoe Stud               |
| T80     | Shift Fork Subassembly          |
| T83     | Connecting Pin Set              |
| T94     | Plain Washer, 1-1/4 in.         |
| T104    | Drive Shaft Spacer              |
| T108    | Spirol Pin, 1/16 x 1/4 in.      |
| T112    | Sleeve                          |
| T141    | Gasket Repair Kit               |
| T173    | Shift Lever                     |
| T187    | Oil Seal, 3-1/2 x 4-3/8 in.     |
| T190    | Sleeve Bearing                  |
| T230    | Drive Shaft Spacer              |
| T237    | Shoulder Screw, 3/8 x 1-3/4 in. |
| T238    | Lock Nut, 5/16-18               |
| T254    | V-ring Seal                     |
| T255    | Flanged Bearing                 |



OPTIONAL END YOKES, CROSS & BEARING KITS  
AND COMPANION FLANGE

| SERIES    | YOKE<br>PART NO.               | CROSS & BRG<br>KIT NO. |
|-----------|--------------------------------|------------------------|
| 1710      | V 2837                         | V 2839                 |
| 1810      | V 2838                         | V 2840                 |
| SPL140    | V 3388                         | V 3389                 |
| 1650/1710 | COMPANION FLANGE NO.<br>V 3619 |                        |

MAY NOT HAVE BEEN SUPPLIED BY WATEROUS



**DRIVELINE – INPUT AND OUTPUT SHAFT**

## Driveline – Input and Shaft Only

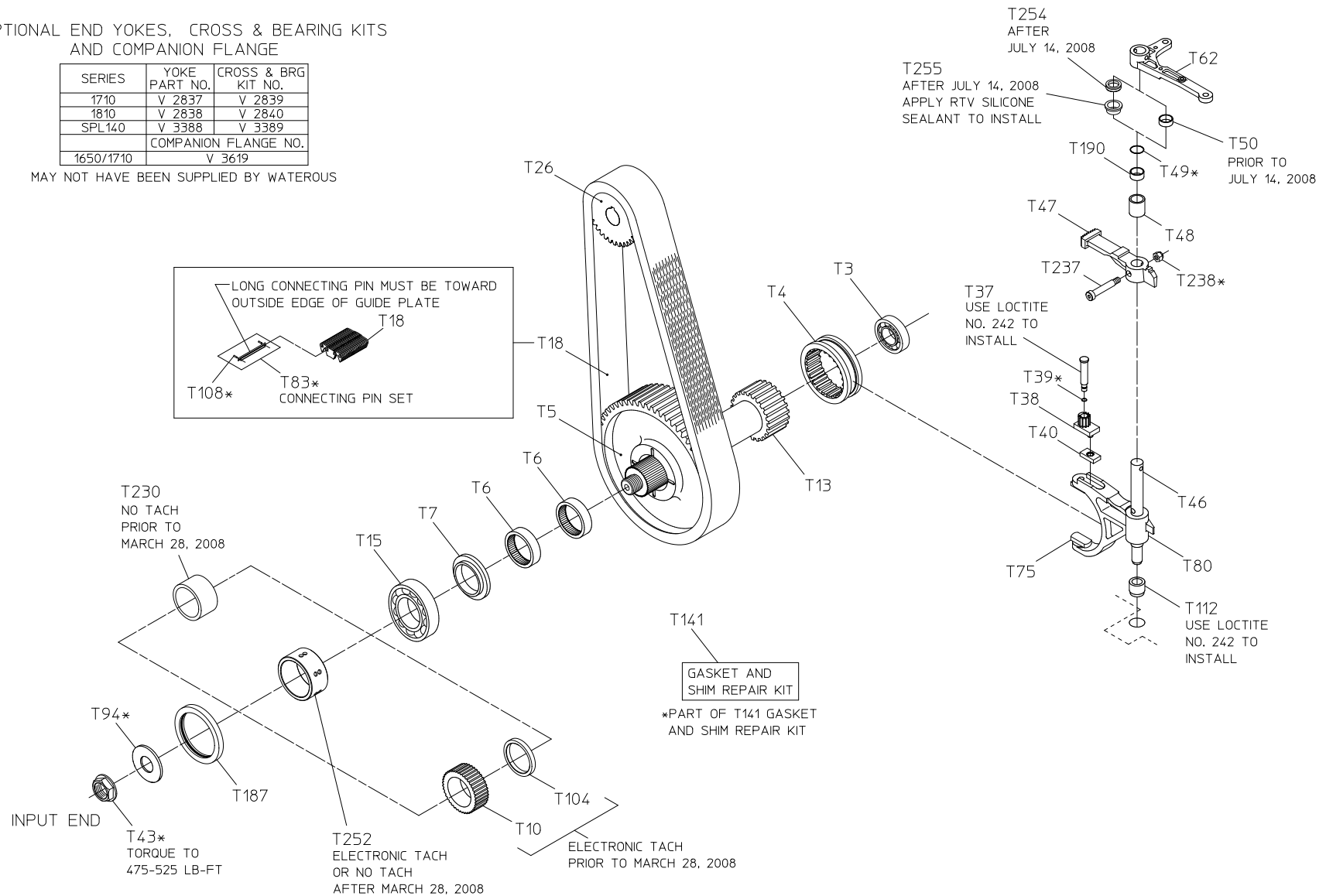
| REF NO. | DESCRIPTION                |
|---------|----------------------------|
| T3      | Ball Bearing               |
| T4      | Shift Collar               |
| T5      | Drive Sprocket             |
| T6      | Needle Bearing             |
| T7      | Thrust Washer              |
| T10     | Tachometer Pulse Generator |
| T13     | Drive Shaft                |
| T15     | Ball Bearing               |
| T18     | Chain                      |
| T26     | Driven Sprocket            |
| T37     | Pivot Pin, 5/8 x 2-3/4 in. |
| T38     | Locking Arm                |
| T39     | O-ring, 1/4 x 3/8 in.      |
| T40     | Shifter Shoe               |
| T43     | Self Locking Nut, 1-1/4-18 |
| T46     | Shift Shaft                |
| T47     | Sector Gear                |
| T48     | Sector Spacer              |
| T49     | O-ring, 7/8 x 1 in.        |

| REF NO. | DESCRIPTION                     |
|---------|---------------------------------|
| T50     | Sleeve Bearing                  |
| T62     | Shift Arm                       |
| T75     | Shifter Shoe                    |
| T76     | Shifter Shoe Stud               |
| T80     | Shift Fork Subassembly          |
| T83     | Connecting Pin Set              |
| T94     | Plain Washer, 1-1/4 in.         |
| T104    | Drive Shaft Spacer              |
| T108    | Spirol Pin, 1/16 x 1/4 in.      |
| T112    | Sleeve                          |
| T141    | Gasket Repair Kit               |
| T187    | Oil Seal, 3-1/2 x 4-3/8 in.     |
| T190    | Sleeve Bearing                  |
| T230    | Drive Shaft Spacer              |
| T237    | Shoulder Screw, 3/8 x 1-3/4 in. |
| T238    | Lock Nut, 5/16-18               |
| T254    | V-ring Seal                     |
| T255    | Flanged Bearing                 |
|         |                                 |

OPTIONAL END YOKES, CROSS & BEARING KITS  
AND COMPANION FLANGE

| SERIES               | YOKE<br>PART NO. | CROSS & BRG<br>KIT NO. |
|----------------------|------------------|------------------------|
| 1710                 | V 2837           | V 2839                 |
| 1810                 | V 2838           | V 2840                 |
| SPL140               | V 3388           | V 3389                 |
| COMPANION FLANGE NO. |                  |                        |
| 1650/1710            | V 3619           |                        |

MAY NOT HAVE BEEN SUPPLIED BY WATEROUS



**DRIVELINE – INPUT SHAFT ONLY**

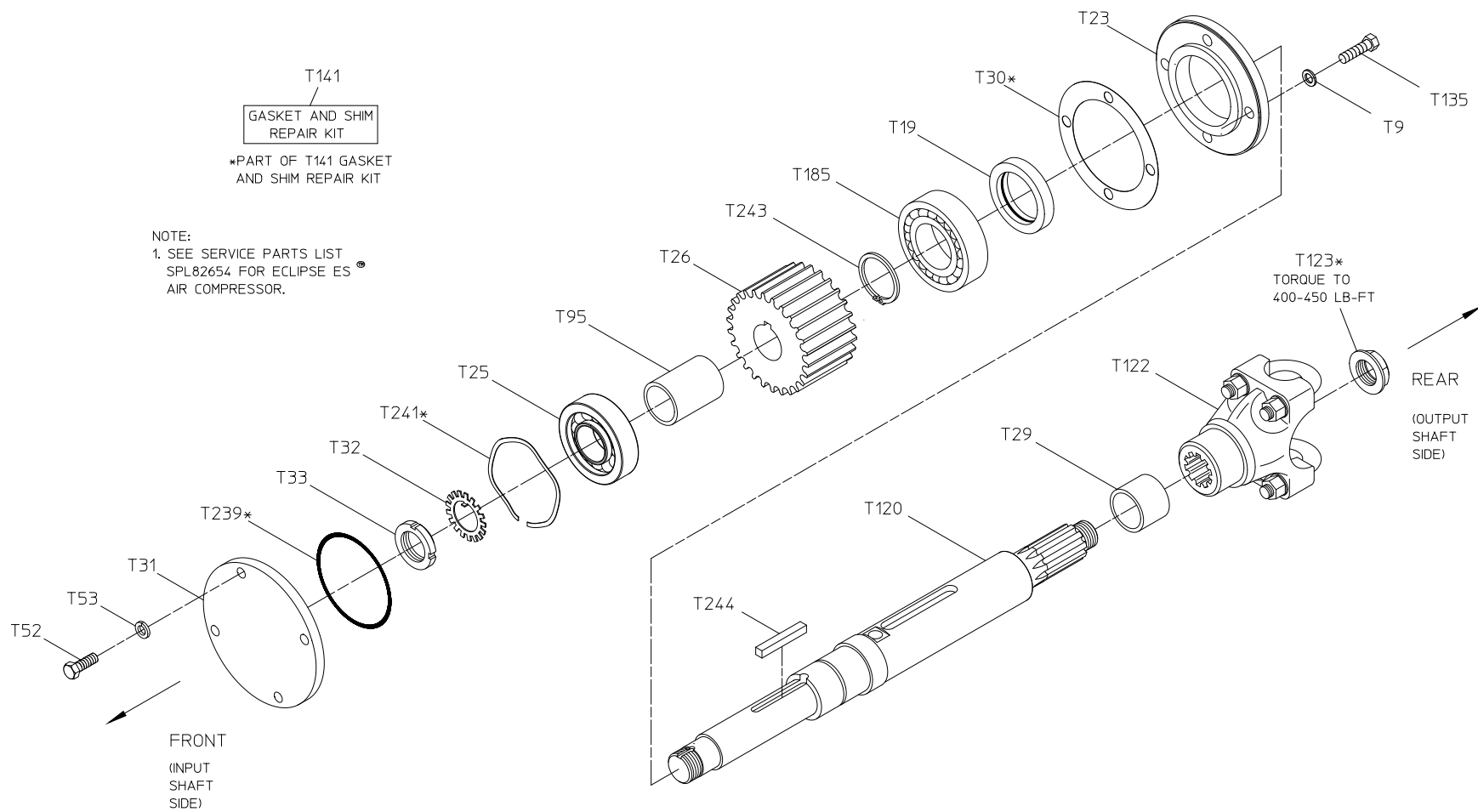
## Output Shaft – Single Output to the Rear

| REF NO. | DESCRIPTION               |
|---------|---------------------------|
| T9      | Lock Washer, M10          |
| T19     | Oil Seal                  |
| T23     | Oil Seal Housing          |
| T25     | Ball Bearing              |
| T26     | Driven Sprocket           |
| T29     | Yoke Spacer               |
| T30     | Plastic Shim, .010        |
| T31     | Bearing Cover             |
| T32     | Bearing Nut Washer        |
| T33     | Bearing Lock Nut          |
| T52     | Hex Hd Screw, M12 x 30 mm |
| T53     | Lock Washer, M12          |

| REF NO. | DESCRIPTION                   |
|---------|-------------------------------|
| T95     | Bearing Spacer                |
| T120    | Driven Shaft                  |
| T122    | End Yoke (1410 Series)        |
| T123    | Self-Locking Nut, 1 in.       |
| T135    | Hex Hd Screw, M10 x 25 mm     |
| T141    | Gasket Repair Kit             |
| T185    | Ball Bearing                  |
| T239    | O-ring, 4-1/4 x 4-1/2 in.     |
| T241    | Wave Spring                   |
| T243    | Retaining Ring                |
| T244    | Square Key, 5/16 x 2-5/16 in. |
|         |                               |

### Hardware Torque Specifications:

| Screw Size | Torque Specifications |
|------------|-----------------------|
| M10        | 36-40 lb-ft           |
| M12        | 64-69 lb-ft           |



**OUTPUT SHAFT – SINGLE OUTPUT TO THE REAR**