

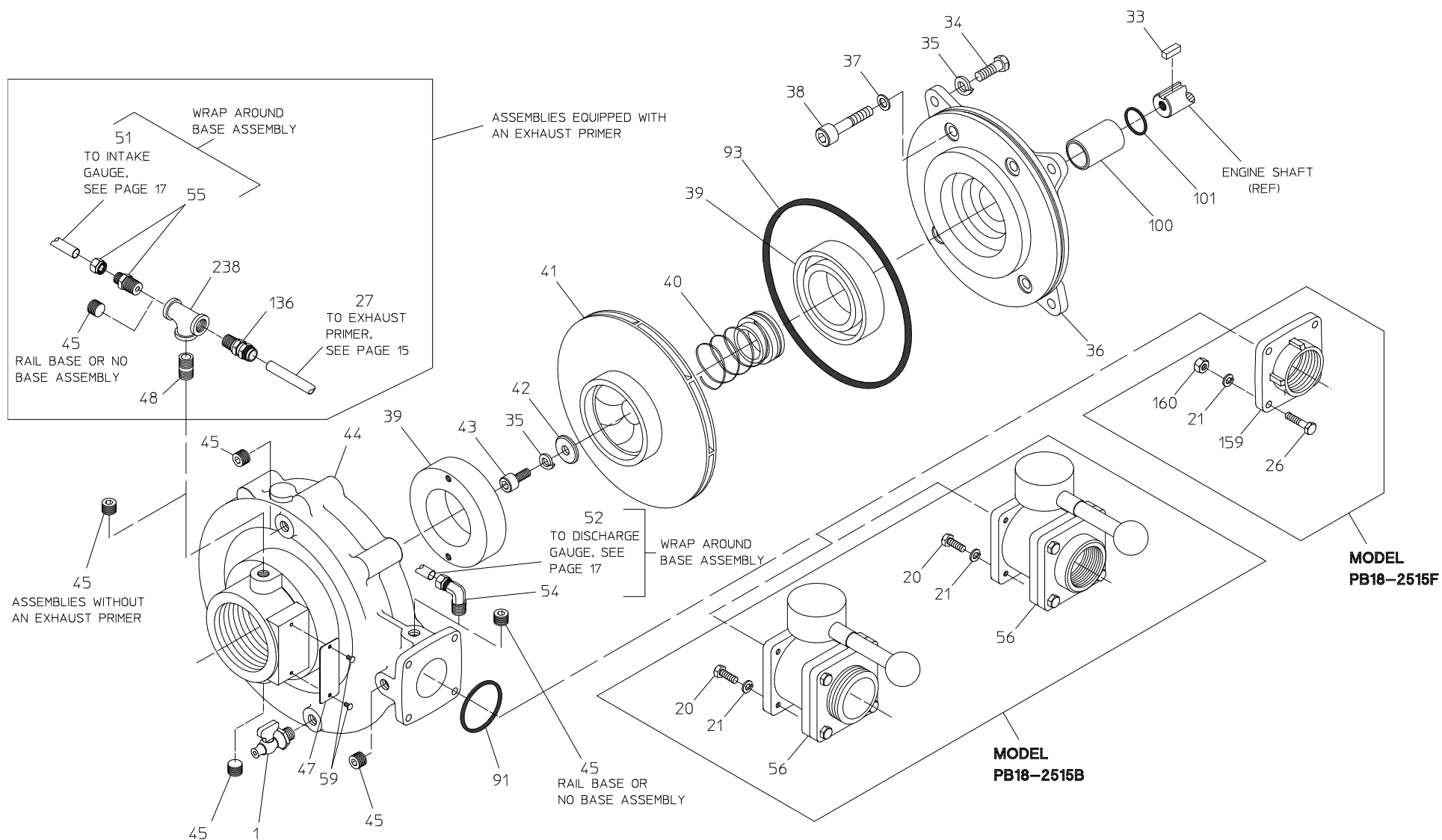
PB18 Series Portable Pump Service Parts List

Component	Pump Model (Located on Serial Plate)	See Page	
		Exploded View	Cross Section View
Pump	PB18-2515B	2, 3	4, 5
	PB18-2515F		
	PB18-303C	6, 7	10, 11
	PB18-3030E		
	PB18-4025B	8, 9	
Muffler	All	12, 13	
Exhaust Primer	All	14, 15	
Instrument Panel	All	16, 17	
Wrap-Around Base	All	18, 19	
Rail Base	All	20, 21	
No Base	All		
Wiring Schematic	All	22, 23	

Pump Assembly for PB18-2515B & PB18-2515F

REF. NO.	DESCRIPTION
1	Drain Cock
20	Hex Hd Screw, 1/4-20 x 3/4 in.
21	Lock Washer, 1/4 in.
26	Hex Hd Screw, 1/4-20 x 1-1/4 in.
27	Poly Tubing, 3/8 O.D.
33	Square Key, 1/4 x 3/4 in.
34	Hex Hd Screw, 3/8-16 x 1 in.
35	Lock Washer, 3/8 in.
36	Engine Adapter
37	Copper Washer, 3/8 in.
38	Socket Hd Screw, 3/8-16 x 2 in.
39	Wear Ring
40	Mechanical Seal
41	Impeller
42	Impeller Washer
43	Socket Hd Screw, 3/8-24 x 1 in.
44	Volute Body

REF. NO.	DESCRIPTION
45	Headless Pipe Plug, 1/4 in.
47	Serial Plate
48	Pipe Nipple, 1/4 x 7/8 in.
51	Nylon Tubing, 1/4 O.D., 32 in.
52	Nylon Tubing, 1/4 O.D., 37 in.
54	Male Elbow, 1/4 NPT x 1/4 Tube
55	Male Connector, 1/4 NPT x 1/4 Tube
56	Ball Valve, 1-1/2 NH (M) or 1-1/2 NPT (F)
59	Drive Screw, #6 x 1/4 in.
91	O-ring, 2-3/4 x 2-15/16 in.
93	O-ring, 7-3/4 x 8 in.
100	Shaft Sleeve
101	O-ring, 1 x 1-1/8 in.
136	Male Connector, 3/8 Tube
159	Ball Valve Adapter, 1-1/2 NPT (F)
160	Hex Nut, 1/4-20
238	Pipe Tee, 1/4 in.



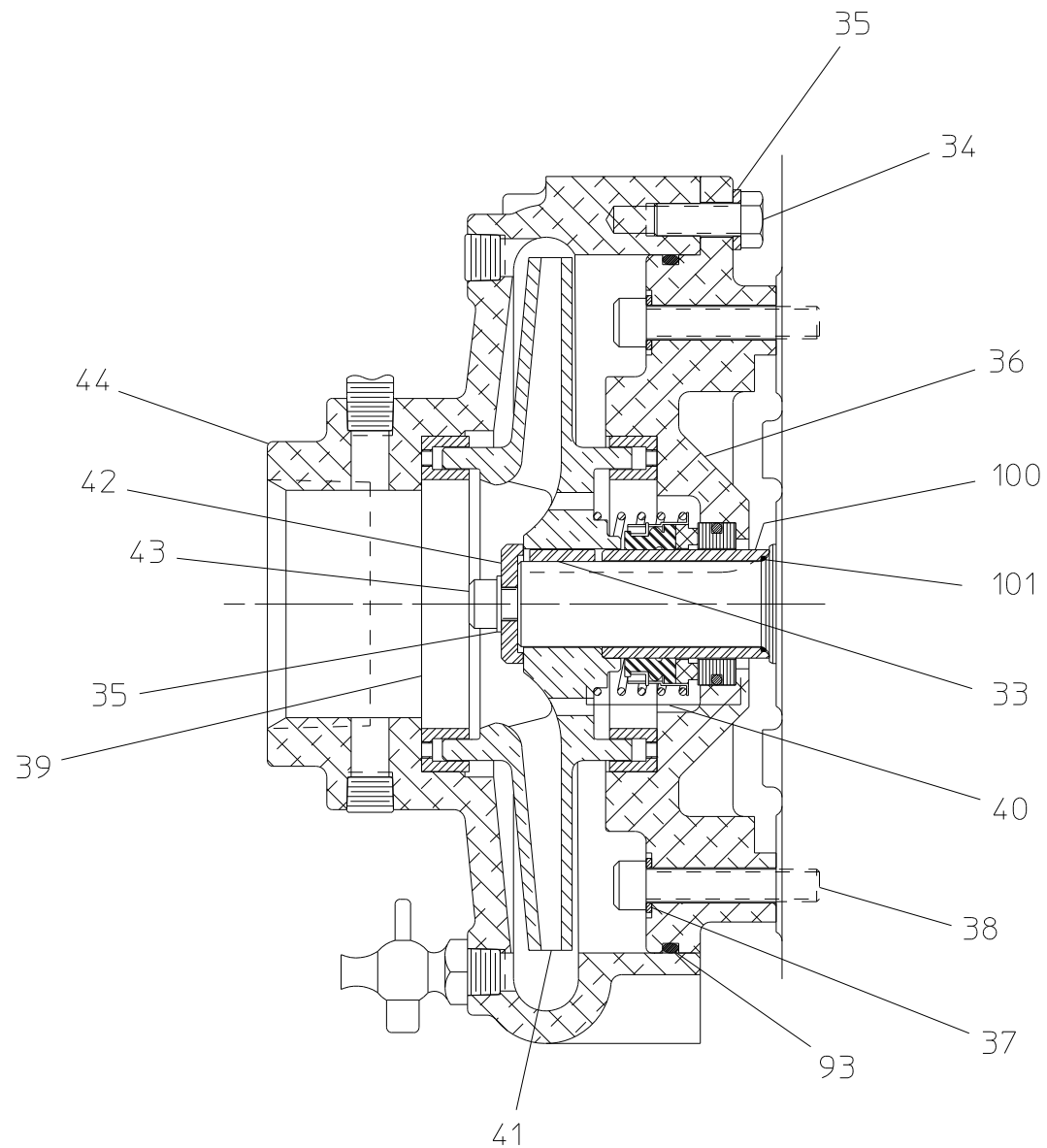
**PUMP ASSEMBLY FOR
MODELS PB18-2515B & PB18-2515F**
(SEE PAGE 5 FOR PUMP ASSEMBLY CROSS SECTION VIEW)

PORTABLE PUMP ASSEMBLY
SPL82944
WATEROUS COMPANY
SOUTH ST. PAUL, MN 55075

Pump Assembly Cross-Section for PB18-2515B & PB18-2515F

REF. NO.	DESCRIPTION
33	Square Key, 1/4 x 3/4 in.
34	Hex Hd Screw, 3/8-16 x 1 in.
35	Lock Washer, 3/8 in.
36	Engine Adapter
37	Copper Washer, 3/8 in.
38	Socket Hd Screw, 3/8-16 x 2 in.
39	Wear Ring
40	Mechanical Seal

REF. NO.	DESCRIPTION
41	Impeller
42	Impeller Washer
43	Socket Hd Screw, 3/8-24 x 1 in.
44	Volute Body
93	O-ring, 7-3/4 x 8 in.
100	Shaft Sleeve
101	O-ring, 1 x 1-1/8 in.



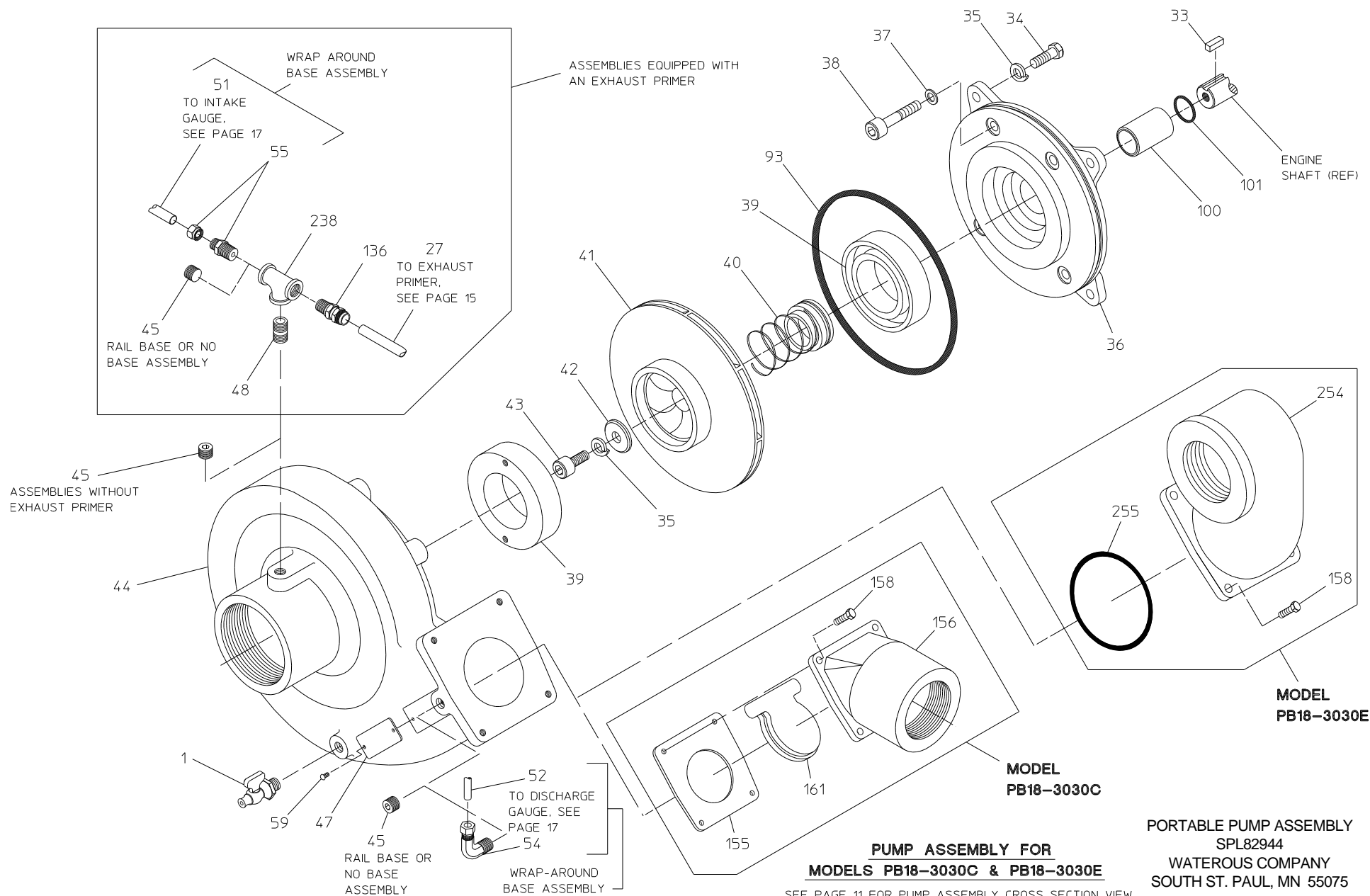
PUMP ASSEMBLY CROSS SECTION
MODELS PB18-2515B & PB18-2515F

PORTABLE PUMP ASSEMBLY
 SPL82944
 WATEROUS COMPANY
 SOUTH ST. PAUL, MN 55075

Pump Assembly for PB18-3030C & PB18-3030E

REF. NO.	DESCRIPTION
1	Drain Cock
27	Poly Tubing, 3/8 O.D.
33	Square Key, 1/4 x 3/4 in.
34	Hex Hd Screw, 3/8-16 x 1 in.
35	Lock Washer, 3/8 in.
36	Engine Adapter
37	Copper Washer, 3/8 in.
38	Socket Hd Screw, 3/8-16 x 2 in.
39	Wear Ring
40	Mechanical Seal
41	Impeller
42	Impeller Washer
43	Socket Hd Screw, 3/8-24 x 1 in.
44	Volute Body
45	Headless Pipe Plug, 1/4 in.
47	Serial Plate
48	Pipe Nipple, 1/4 x 7/8 in.

REF. NO.	DESCRIPTION
51	Nylon Tubing, 1/4 O.D., 32 in.
52	Nylon Tubing, 1/4 O.D., 37 in.
54	Male Elbow, 1/4 NPT x 1/4 Tube
55	Male Connector, 1/4 NPT x 1/4 Tube
59	Drive Screw, #6 x 1/4 in.
93	O-ring, 7-3/4 x 8 in.
100	Shaft Sleeve
101	O-ring, 1 x 1-1/8 in.
136	Male Connector, 3/8 Tube
155	Gasket
156	Elbow, 3 NPT
158	Hex Hd Screw, 2/16-18 x 1 in.
161	Check Valve
238	Pipe Tee, 1/4 in.
254	Discharge Extension, 3 NPT
255	O-ring, 3-5/8 x 3-7/8 in.

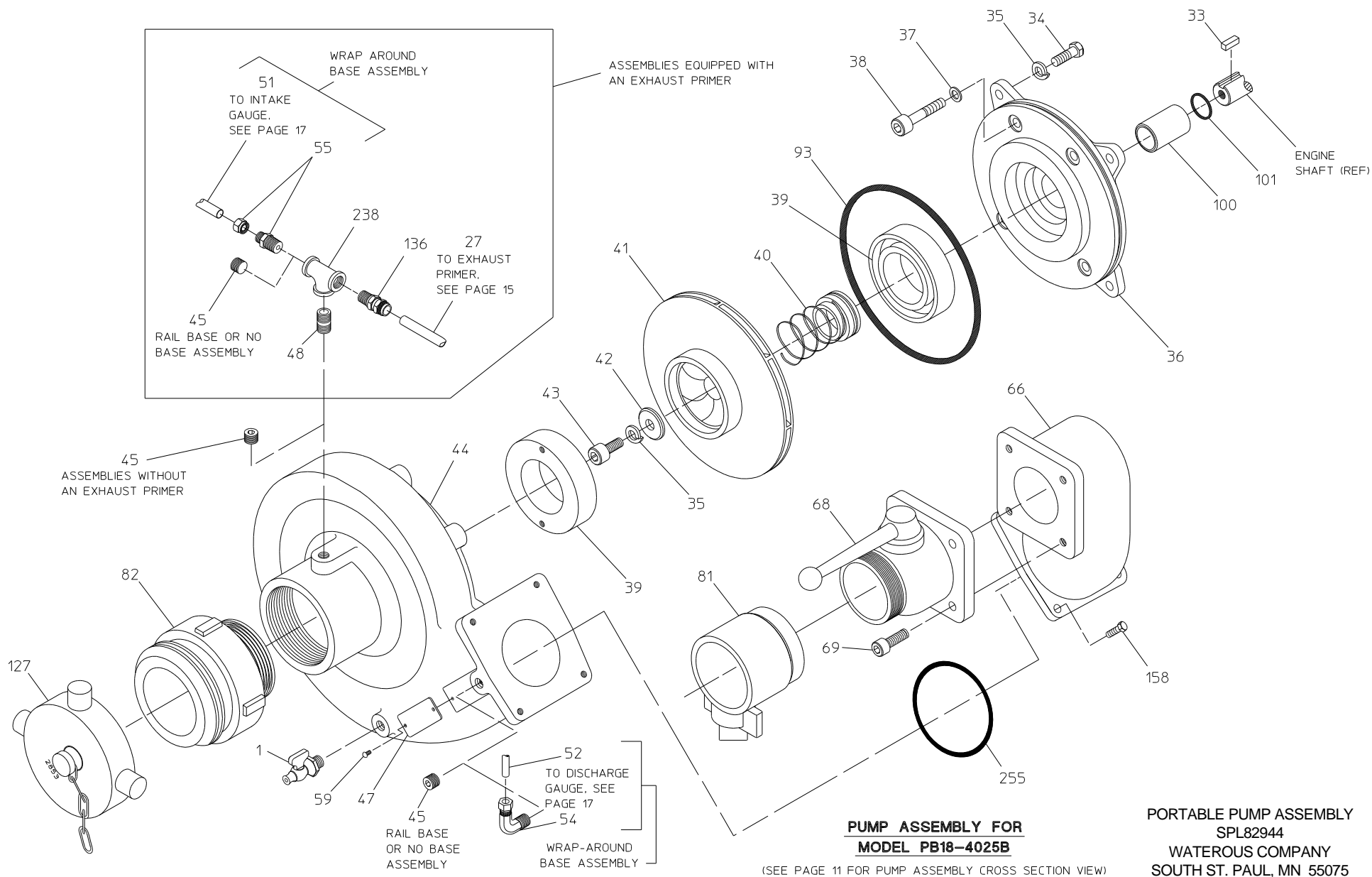


PORTABLE PUMP ASSEMBLY
SPL82944
WATEROUS COMPANY
SOUTH ST. PAUL, MN 55075

Pump Assembly for PB18-4025B

REF. NO.	DESCRIPTION
1	Drain Cock
27	Poly Tubing, 3/8 O.D.
33	Square Key, 1/4 x 3/4 in.
34	Hex Hd Screw, 3/8-16 x 1 in.
35	Lock Washer, 3/8 in.
36	Engine Adapter
37	Copper Washer, 3/8 in.
38	Socket Hd Screw, 3/8-16 x 2 in.
39	Wear Ring
40	Mechanical Seal
41	Impeller
42	Impeller Washer
43	Socket Hd Screw, 3/8-24 x 1 in.
44	Volute Body
45	Headless Pipe Plug, 1/4 in.
47	Serial Plate
48	Pipe Nipple, 1/4 x 7/8 in.

REF. NO.	DESCRIPTION
51	Nylon Tubing, 1/4 O.D., 32 in.
52	Nylon Tubing, 1/4 O.D., 37 in.
54	Male Elbow, 1/4 NPT x 1/4 Tube
55	Male Connector, 1/4 NPT x 1/4 Tube
59	Drive Screw, #6 x 1/4 in.
66	Discharge Extension Flange, 110mm
68	Ball Valve, 110mm x 2-1/2 BSP
69	Socket Hd Screw, 10mm x 30mm
81	Adapter, 2-1/2 BSP x 2-1/2 BIC
82	Adapter, 3 NPT x 4 BSRT
93	O-ring, 7-3/4 x 8 in.
100	Shaft Sleeve
101	O-ring, 1 x 1-1/8 in.
127	Blind Cap with Chain, 4 BSRT
136	Male Connector, 3/8 Tube
158	Hex Hd Screw, 2/16-18 x 1 in.
238	Pipe Tee, 1/4 in.
255	O-ring, 3-5/8 x 3-7/8 in.

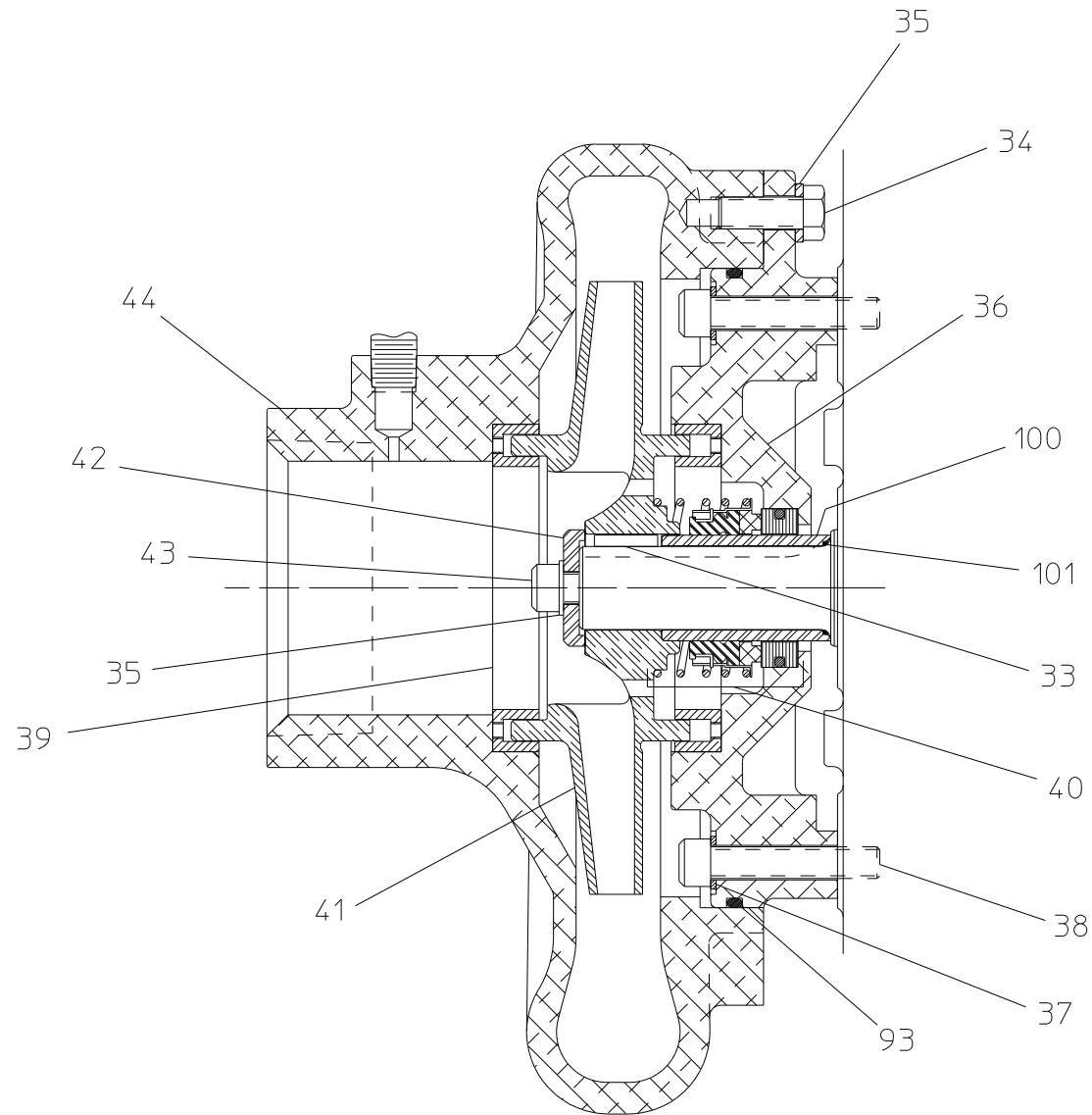


PORTABLE PUMP ASSEMBLY
SPL82944
WATEROUS COMPANY
SOUTH ST. PAUL, MN 55075

Pump Assembly Cross-Section for PB18-3030C, PB18-3030E & PB18-4025B

REF. NO.	DESCRIPTION
33	Square Key, 1/4 x 3/4 in.
34	Hex Hd Screw, 3/8-16 x 1 in.
35	Lock Washer, 3/8 in.
36	Engine Adapter
37	Copper Washer, 3/8 in.
38	Socket Hd Screw, 3/8-16 x 2 in.
39	Wear Ring
40	Mechanical Seal

REF. NO.	DESCRIPTION
41	Impeller
42	Impeller Washer
43	Socket Hd Screw, 3/8-24 x 1 in.
44	Volute Body
93	O-ring, 7-3/4 x 8 in.
100	Shaft Sleeve
101	O-ring, 1 x 1-1/8 in.



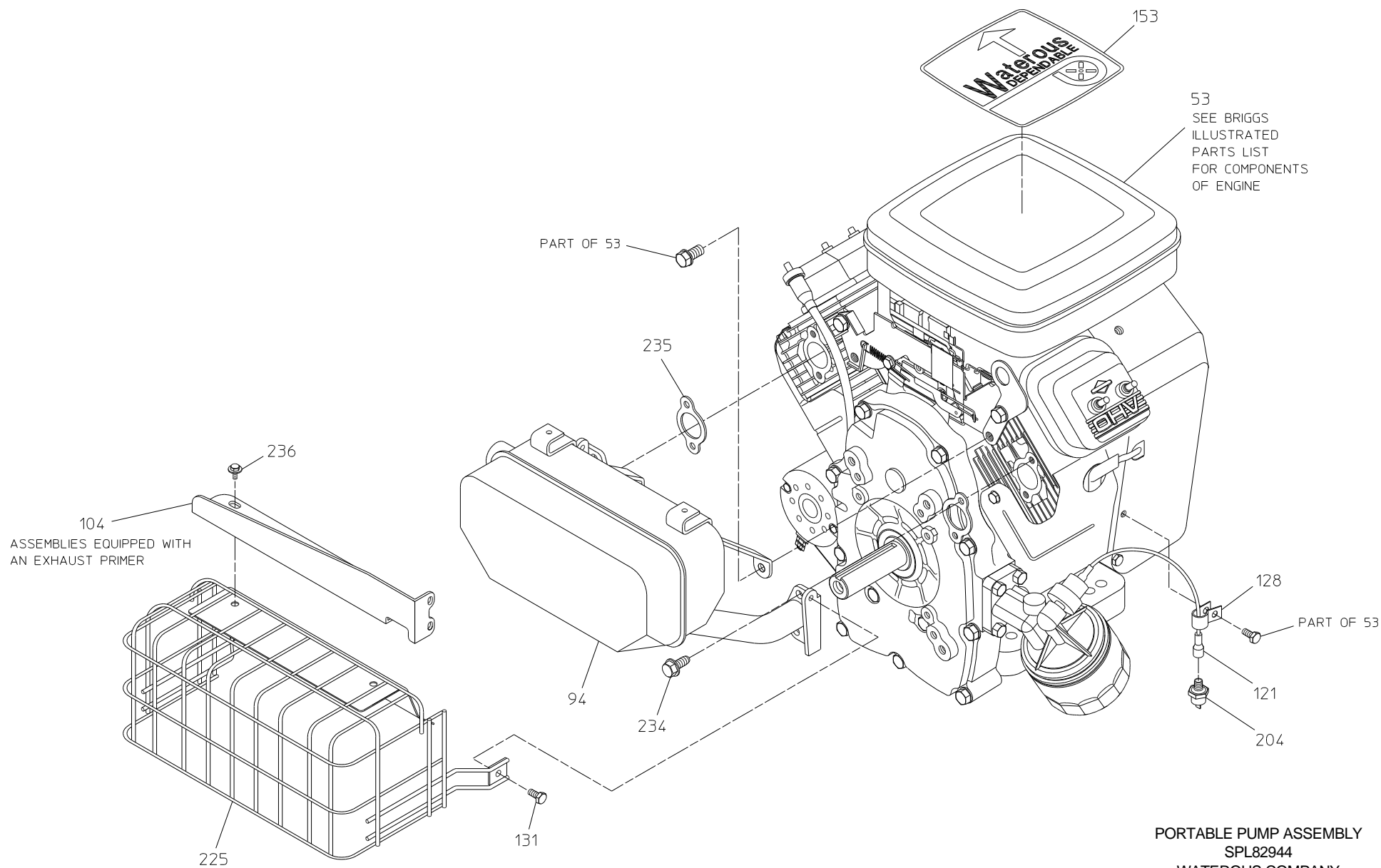
PUMP ASSEMBLY CROSS SECTION
MODELS PB18-3030C, PB18-3030E & PB18-4025B PUMPS

PORTABLE PUMP ASSEMBLY
 SPL82944
 WATEROUS COMPANY
 SOUTH ST. PAUL, MN 55075

Engine & Muffler

REF. NO.	DESCRIPTION
53	Engine - 18 HP
94	Muffler
104	Primer Base
121	Oil Pressure Switch Wire Assembly
128	Wire Clamp
131	Self-Locking Screw

REF. NO.	DESCRIPTION
153	Vanguard Decal
204	Oil Pressure Switch
225	Muffler Guard
234	Muffler Screw
235	Muffler Gasket
236	Muffler Guard Screw



ENGINE AND MUFFLER

PORTABLE PUMP ASSEMBLY
SPL82944
WATEROUS COMPANY
SOUTH ST. PAUL, MN 55075

Engine & Exhaust Primer

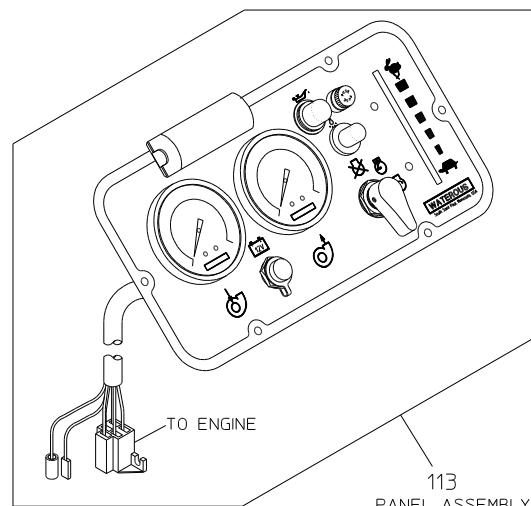
REF. NO.	DESCRIPTION
12	Pan Hd Screw, #10-24 x 1/2 in.
18	Primer Adapter
19	Priming Rod Bracket
22	Nylon Split Bushing
23	Bar Knob
24	Male Connector, 90° 3/8 Tubing
27	Poly Tubing, 3/8 O.D.
46	Compression Elbow, 1/4 NPT x 3/8 Tube
61	Hex Nut, 5/16-18
62	Primer Lever
64	Hex Nut, 1/4-28
65	Socket Hd Screw, #10-24 x 3/8 in.
67	Socket Hd Screw, #10-24 x 5/8 in.
85	Plain Washer, 1/4 in.
88	Lock Washer, #10
90	Ball Valve, 1/4 NPT
92	Linkage Rod

REF. NO.	DESCRIPTION
95	Ductile Iron Primer
99	Rod End
102	Copper Primer Tube, 3/8 O.D.
103	Exhaust Primer Subassembly
105	Primer Rod
114	Spark Arrestor
122	Compression Spring
123	Hex Hd Screw, 1/4-20 x 1 in.
124	Hex Nut, 1/4-20
125	Hex Hd Screw, 8 mm x 20 mm
129	Primer Gasket
220	Butterfly Valve
227	Pan Hd Screw, #8-32 x 3/8 in.
230	Lock Washer, #8
231	Set Screw, 1/4-20 x 1/2 in.

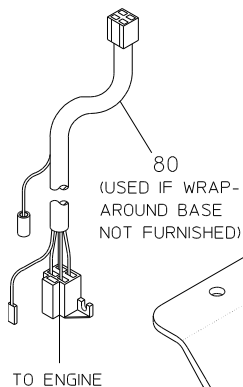
Instrument Panel

REF. NO.	DESCRIPTION
2	Panel Light
3	Nylok Nut, #10-24
4	Throttle Control
6	Panel Plate
7	Intake Gauge
8	Connector Cap
9	Discharge Gauge
10	Ignition Switch
11	Switch Knob
12	Pan Hd Screw, #10-24 x 1/2 in.
13	Panel Light Switch

REF. NO.	DESCRIPTION
14	Switch Seal
15	Panel Fuseholder
16	5 Amp Fuse
17	Oil Light
51	Nylon Tubing, 1/4 O.D., 32 in.
52	Nylon Tubing, 1/4 O.D., 37 in.
80	Harness Extension
111	Panel Insert
113	Instrument Panel Subassembly
126	Female Elbow, 90°, 1/4 NPT x 1/4 O.D.
140	12 Volt Lamp, 5 Watt

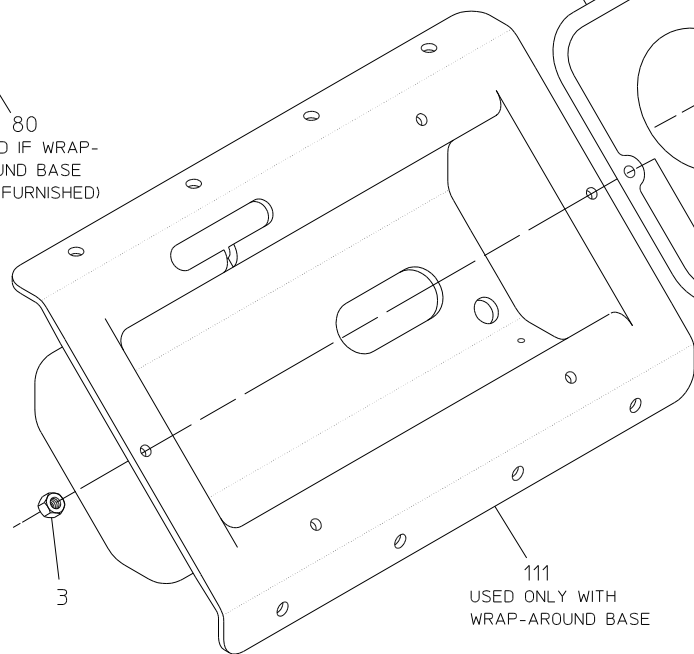


113
PANEL ASSEMBLY



80
(USED IF WRAP-
AROUND BASE
NOT FURNISHED)

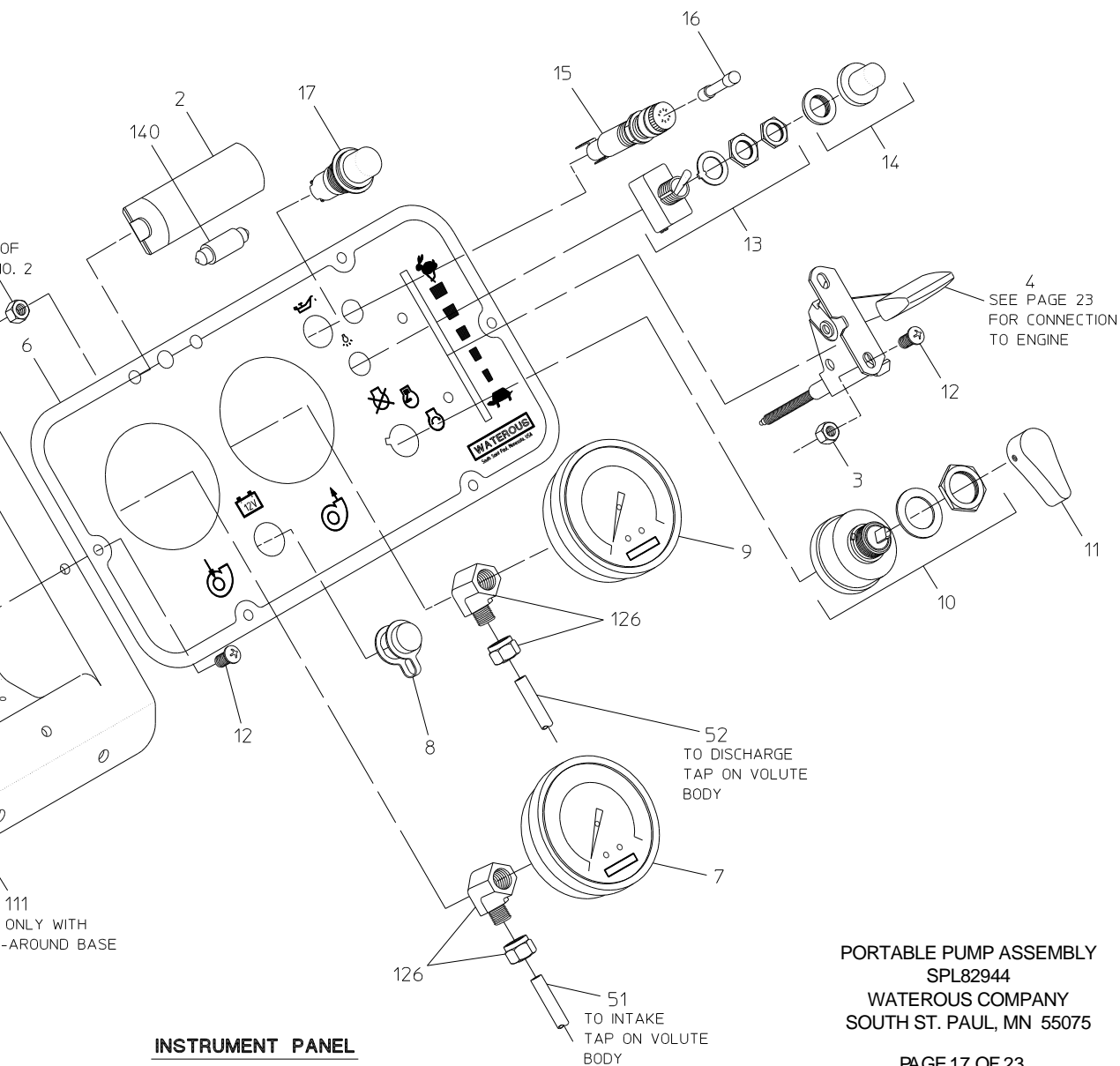
TO ENGINE



111
USED ONLY WITH
WRAP-AROUND BASE

INSTRUMENT PANEL

PART OF
REF. NO. 2

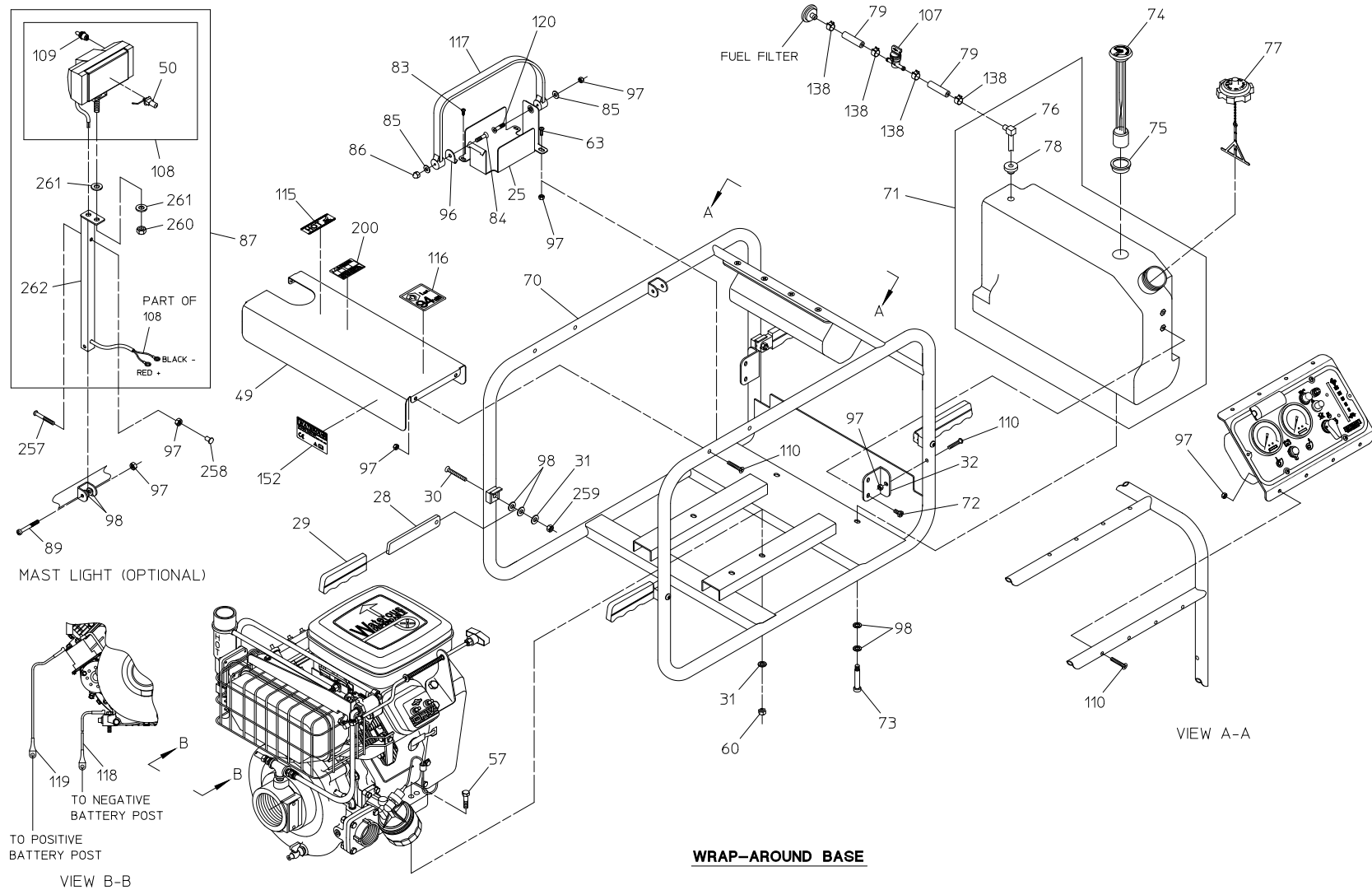


PORTABLE PUMP ASSEMBLY
SPL82944
WATEROUS COMPANY
SOUTH ST. PAUL, MN 55075

Wrap-Around Base

REF. NO.	DESCRIPTION
25	Battery Tray
28	Carry Handle
29	Grip Handle
30	Button Hd Screw, 5/16-18 x 2 in.
31	Plain Washer, 5/16 in.
32	Tank Bracket
49	Heat Shield
50	Mast Light Bulb, 12V
57	Hex Hd Screw, 5/16-18 x 1-3/4 in.
60	Nylok Nut, 5/16-18
63	Pan Hd Screw, 1/4-20 x 3/4 in.
70	Wrap-Around Frame
71	Fuel Tank (Includes 76 & 78)
72	Hex Hd Screw, 1/4-20 x 1/2 in.
73	Shoulder Socket Screw, 1/4-20 x 1/4 in.
74	Fuel Gauge
75	Rubber Grommet
76	Fuel Tank Hose Barb
77	Fuel Tank Cap
78	Fuel Tank Grommet
79	Fuel Line
83	Self-Tap Screw, #8-18 x 1/2 in.
84	Pan Hd Screw, 1/4-20 x 1 in.
85	Plain Washer, 1/4 in.

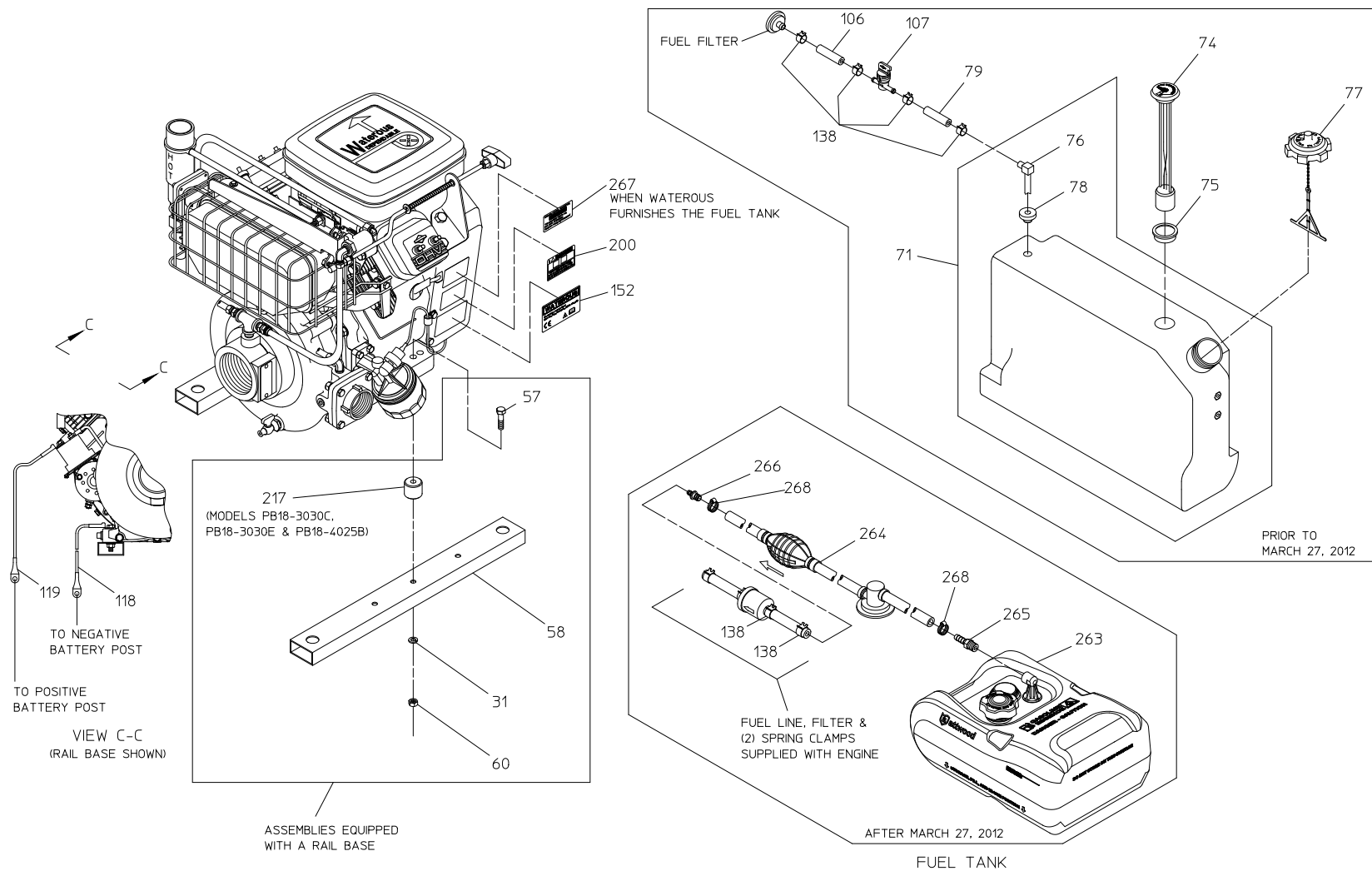
REF. NO.	DESCRIPTION
86	Acorn Nut, 1/4-20
87	Mast Light Assembly
89	Pan Hd Screw, 1/4-20 x 1-1/2 in.
96	Strap Clip
97	Nylok Nut, 1/4-20
98	Nylon Washer, 5/16 in.
107	Fuel Shut-Off Valve
108	Light Assembly
109	Mast Light Switch
110	Oval Hd Screw, 1/4-20 x 1-1/2 in.
115	Hot Decal
116	94 Decibel Decal
117	Battery Strap
118	Negative Wire Assembly
119	Positive Wire Assembly
120	Flat Hd Screw, 1/4-20 x 1 in.
138	Spring Hose Clamp, 17/32
152	CE Marking Decal
200	Warning Label
257	Pan Hd Screw, 1/4-20 x 2-1/2
258	Thread Cap
259	Thin Style Nylok Nut, 5/16-18
260	Nylok Nut, M10 x 1.5
261	Nylon Washer, M10
262	Mast Light Support



Rail Base or No Base

REF. NO.	DESCRIPTION
31	Plain Washer, 5/16 in.
57	Hex Hd Screw, 5/16-18 x 1-3/4 or 2-3/4 in.
58	Rail Base
60	Nylok Nut, 5/16-18
71	Fuel Tank (Includes 76 & 78)
74	Fuel Gauge
75	Rubber Grommet
76	Fuel Tank Hose Barb x 90° Elbow
77	Fuel Tank Cap

REF. NO.	DESCRIPTION
78	Fuel Tank Grommet
79	Fuel Line
106	Fuel Line
107	Fuel Shut-Off Valve
118	Negative Wire Assembly
119	Positive Wire Assembly
138	Spring Hose Clamp, 17/32
152	CE Marking Decal
200	Warning Label
217	Spacer, 1 in.
263	Fuel Tank
264	Fuel Line, 3/8 in. x 72 in.
265	Hose Connector, 1/4 NPT x 3/8 in. Hose
266	Barbed Tube Connector, 1/4 in. x 3/8 in.
267	EPA Evap Decal
268	Hose Clamp, 1/4 to 5/8



Wiring Schematic

REF. NO.	DESCRIPTION
2	Panel Light
4	Throttle Control
10	Ignition Switch

REF. NO.	DESCRIPTION
13	Panel Light Switch
15	Panel Fuseholder
17	Oil Light

