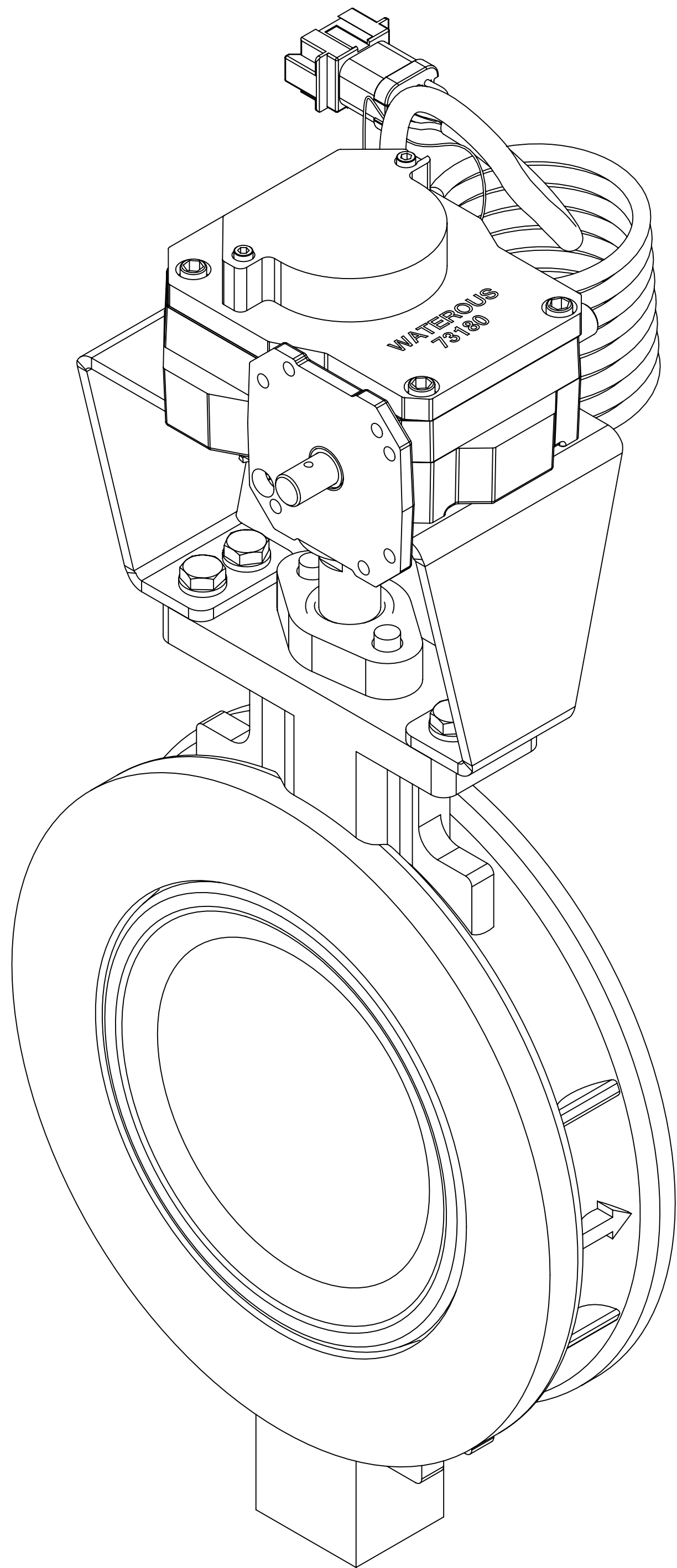


8 in. Butterfly Valve

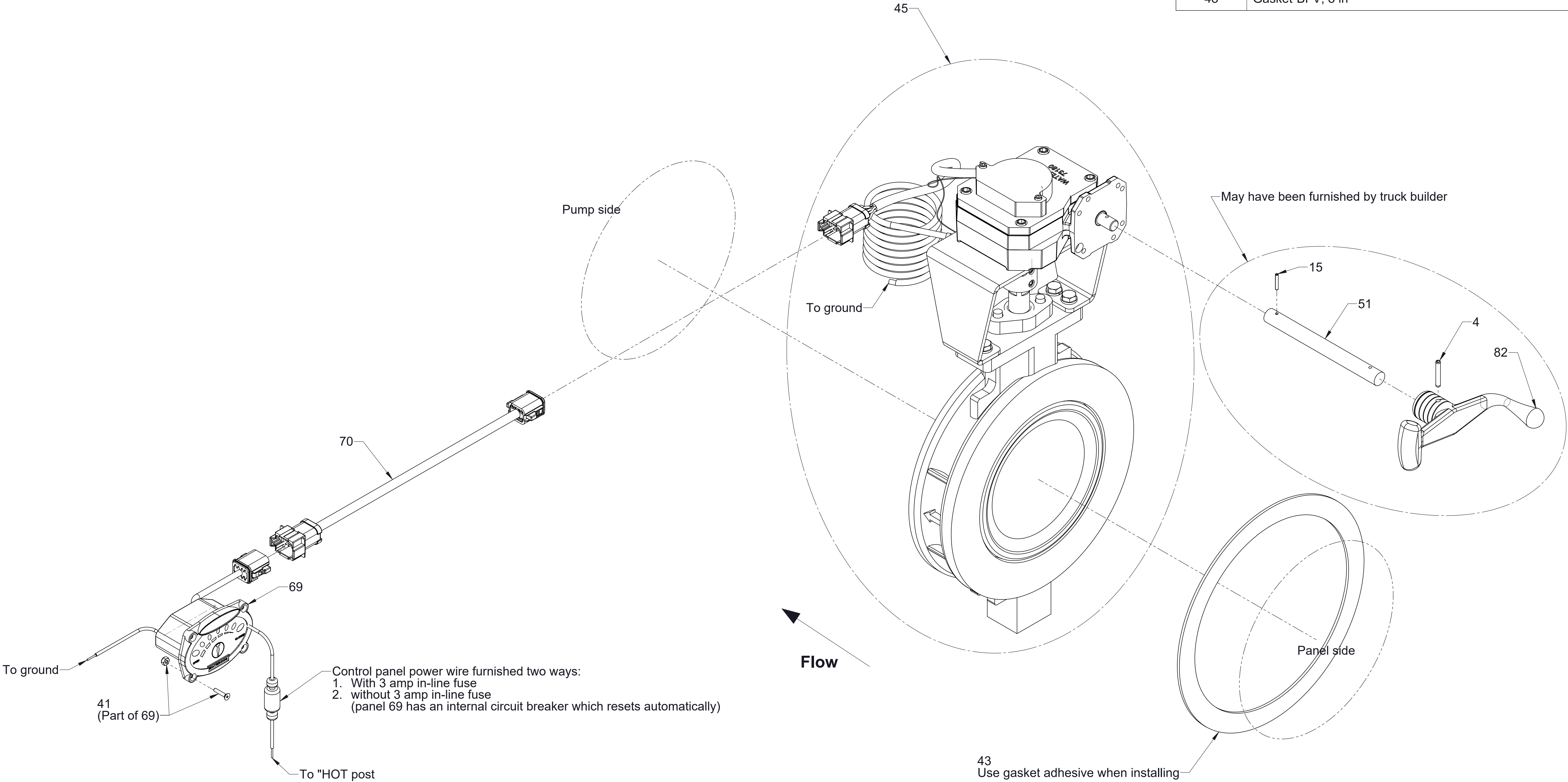
Service Parts List

For valve and pneumatic actuator repair parts not shown, see Metso website (Jamesbury Valves)

Valve Actuator Type		Components	See Page
Manual	Indicating	Cables and Panel Components	2
		Valve Body	3
		Available Repair Subassembly	4

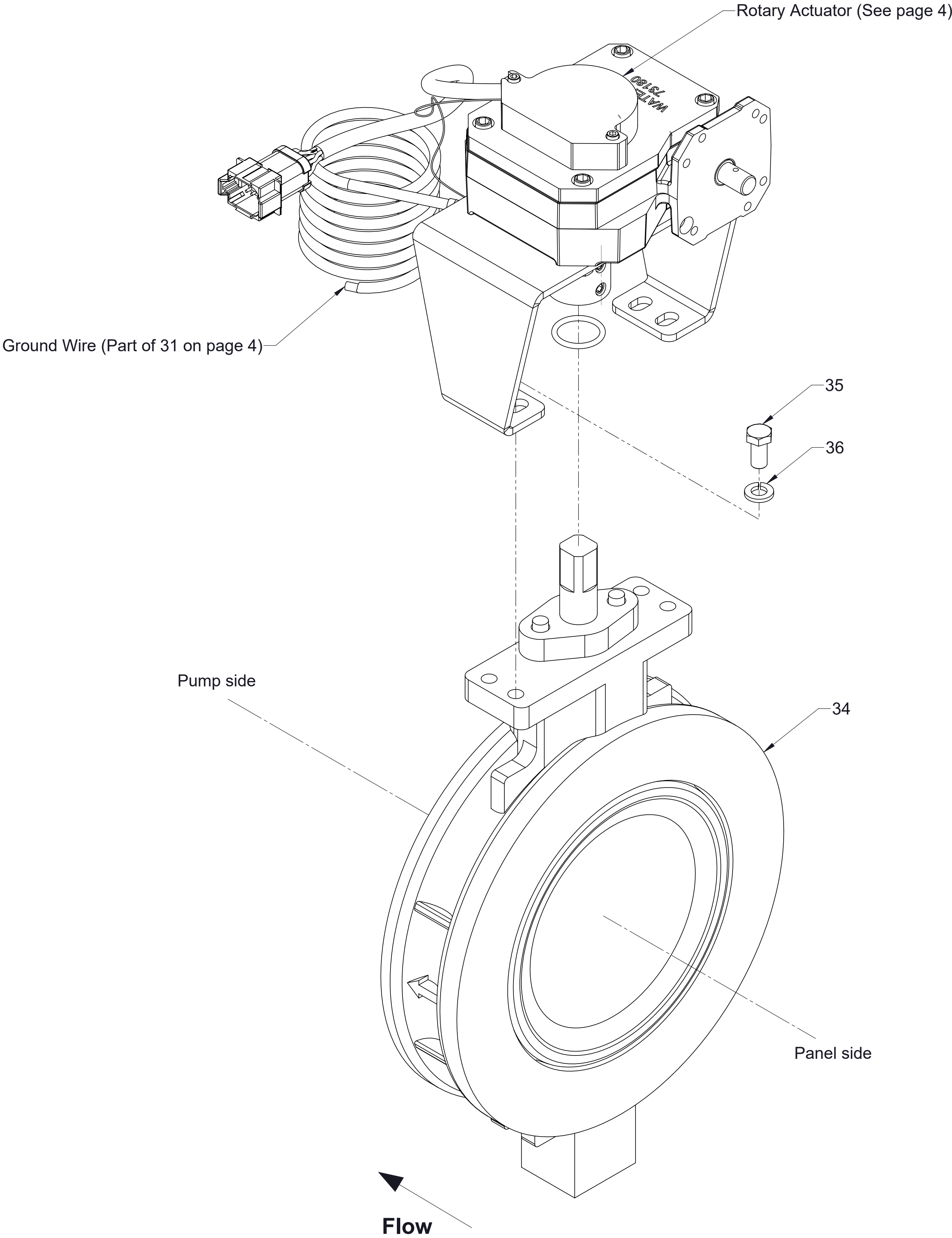


Ref No.	Description
4	Pin-Spring, 3/16 x 1 1/4 in
15	Pin-Spirol, 1/8 x 3/4 in
41	Screw-Machine, Flat Hd, Hex Soc, #6-32 x 3/4 in
45	Manual Butterfly Valve (Includes Actuator)
51	Shaft-Extension, Handle
69	LED Panel Assembly
70	Cable-Extension, Encoder
82	Handle-Discharge Valve
48	Gasket-BFV, 8 in



Manual Indicating Valve with Cable and Panel Components

Ref No.	Description
34	Butterfly Valve (Less Actuator)
35	Screw-Hex Hd, 3/8-16 x 3/4 in
36	Washer-Lock, 3/8 in
49	Valve Seat and Shaft Seal Repair kit (Includes gaskets Ref No. 43)

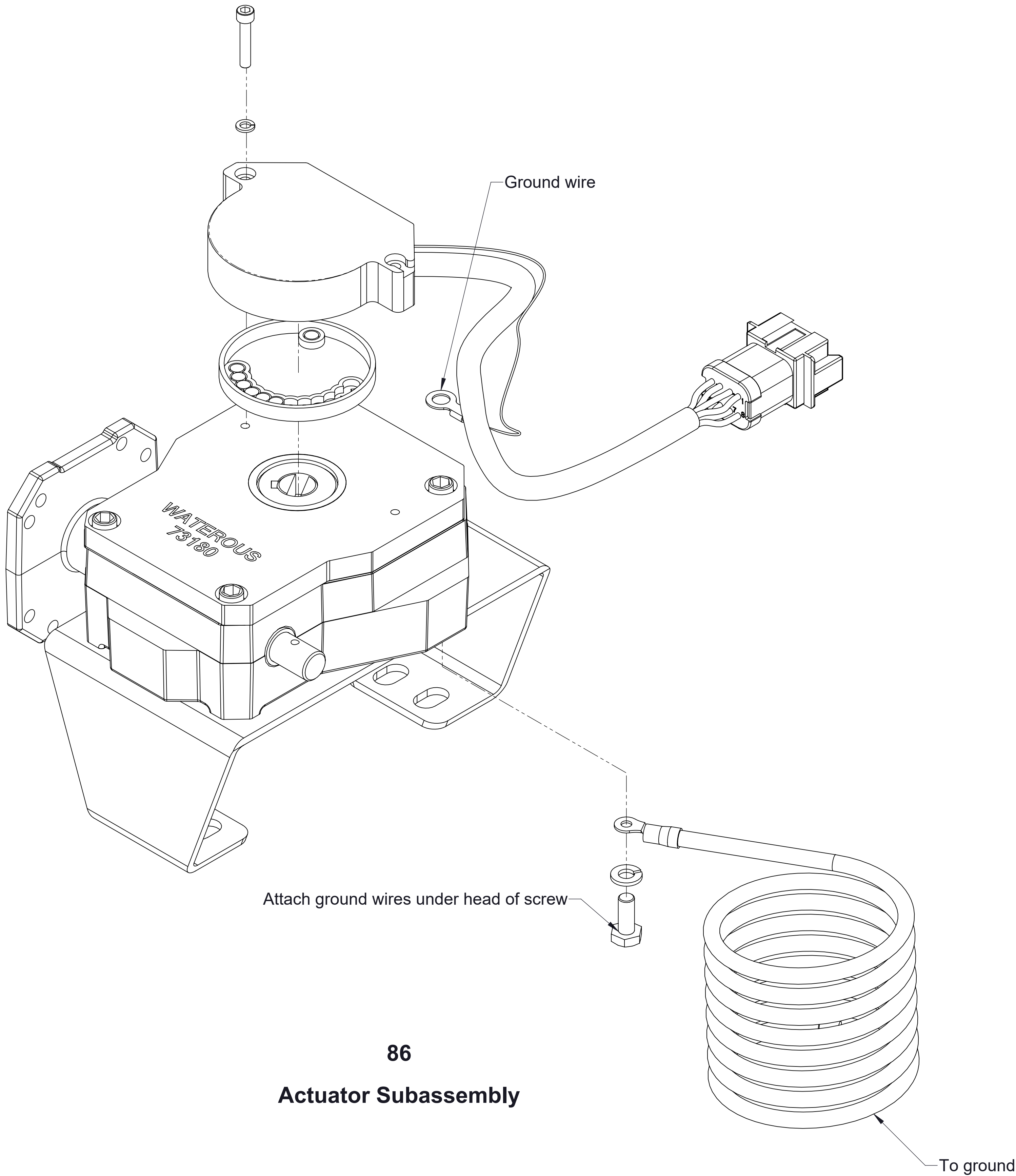


49  
Valve Seat and Shaft  
Seal Repair Kit

Manual Indicating Valve Body



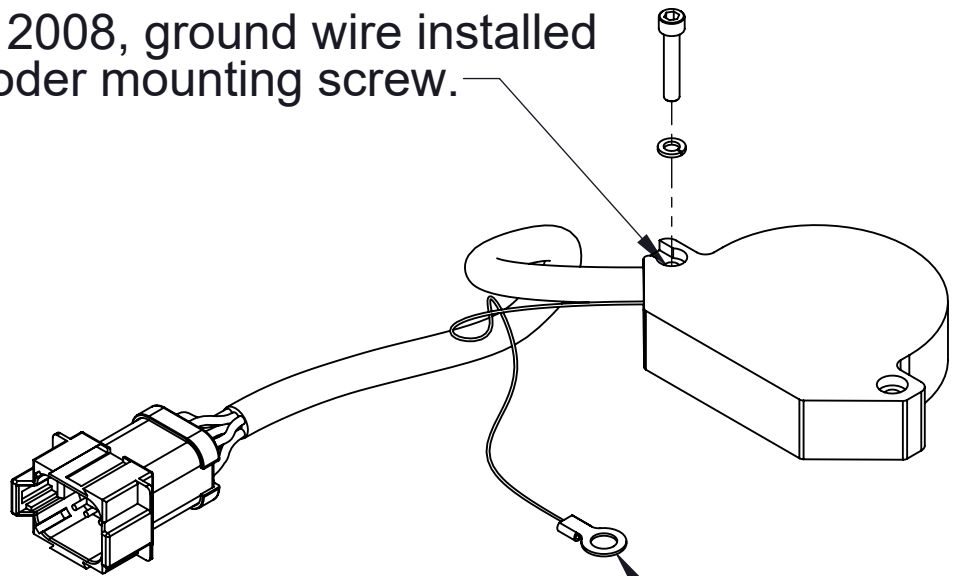
Ref No.	Description
31	Rotary Encoder Replacement Kit
86	Actuator Subassembly



31  
Rotary Encoder  
Replacement Kit

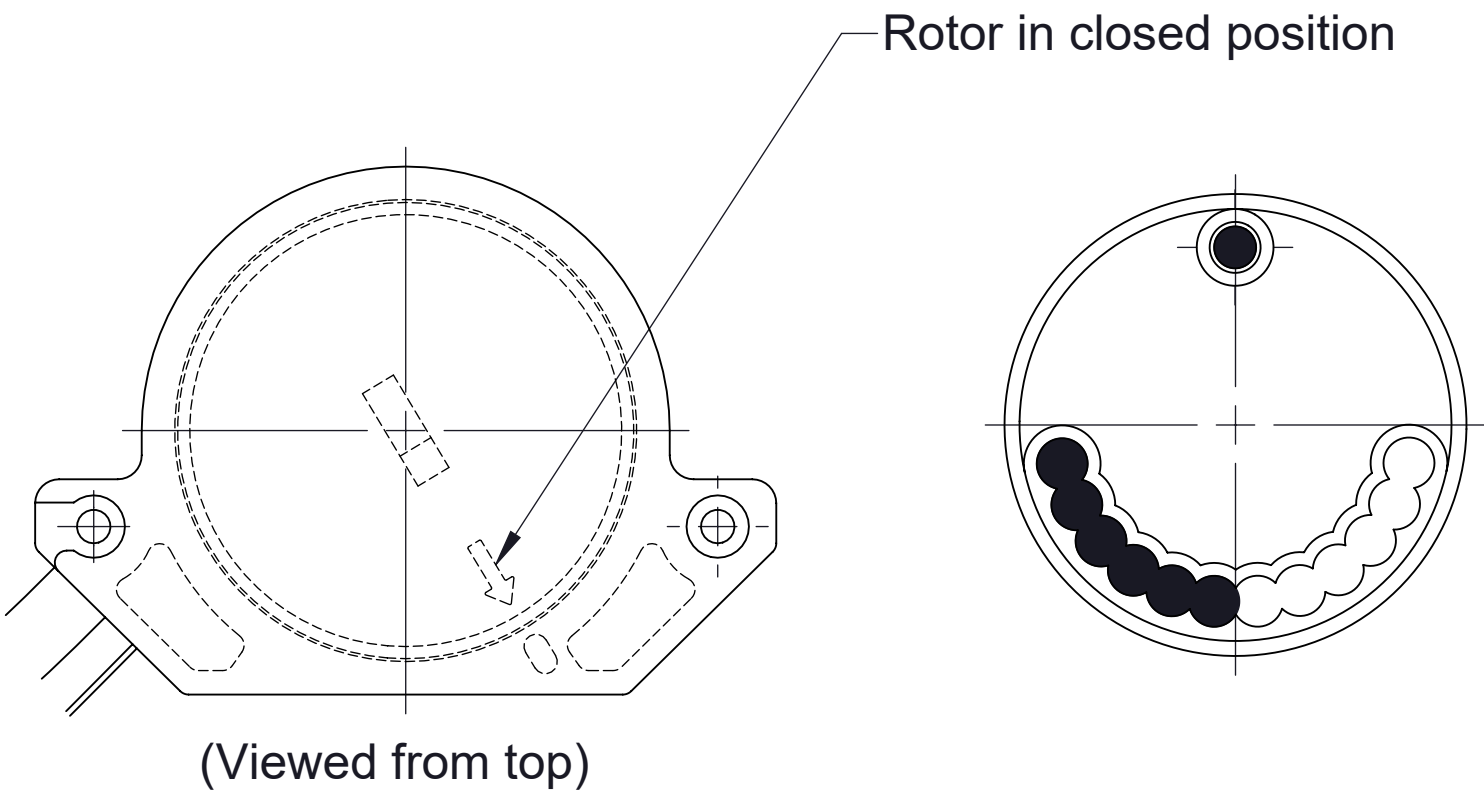
### Encoder Details

Prior to January 7, 2008, ground wire installed under head of encoder mounting screw.



After January 7, 2008, ground wire installed under head of mounting bracket, see 86.

### Encoder Ground Wire Detail



Rotor Position

Rotor Magnet Positions