

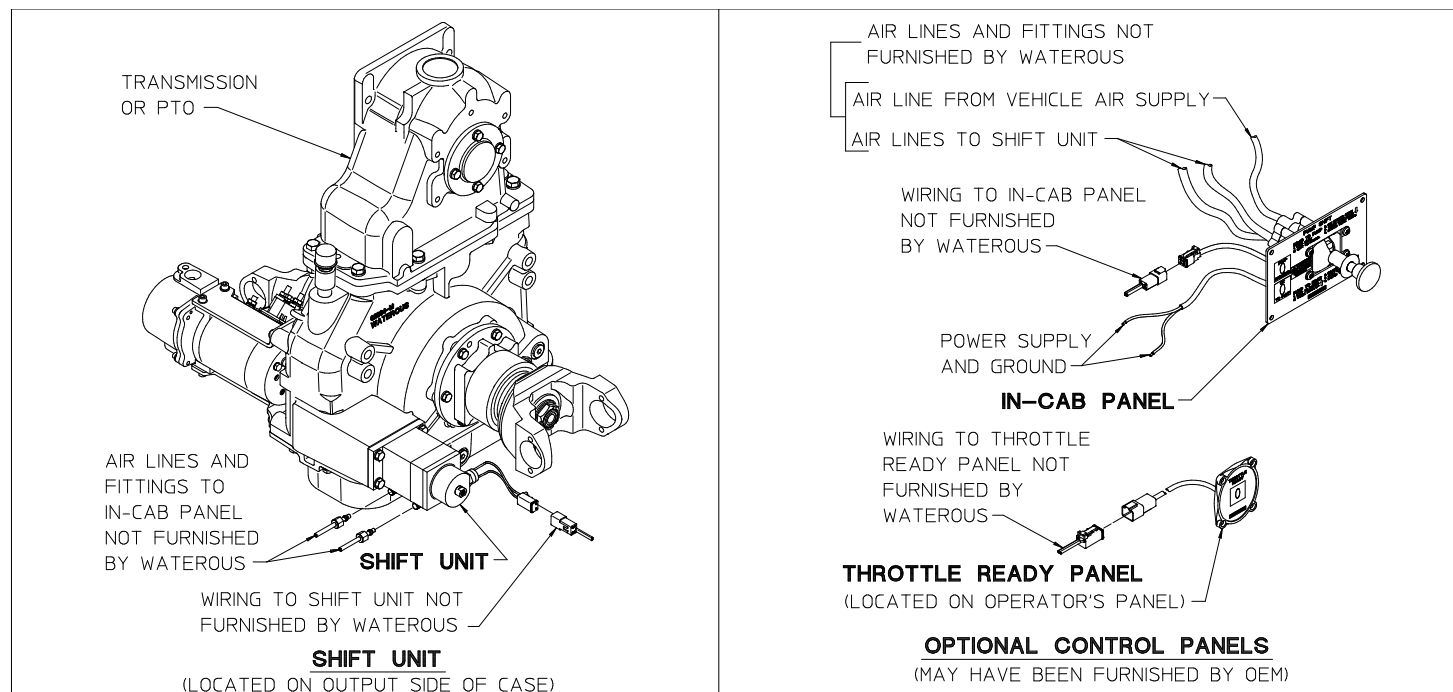


|                 |                 |                 |
|-----------------|-----------------|-----------------|
| Document Number | Issue Date      | Rev. Date       |
| <b>SPL82990</b> | <b>07/15/09</b> | <b>10/16/19</b> |

## Pneumatic Shift Service Parts List

As used with C20 and C21 Series Transmissions and TC20 and TC21 Series PTO's  
Index:

| Component   |  | See Page |
|---|--|----------|
| <b>Shift Unit</b> <i>(Mounted on Pump Transmission or PTO)</i>            |  | 2, 3     |
| <b>Optional Control Panels</b><br><i>(May have been furnished by OEM)</i> | In-Cab Panel   | 4, 5     |
|   | Throttle Ready Panel<br><i>(Located on Operator's Panel)</i> | 6, 7     |



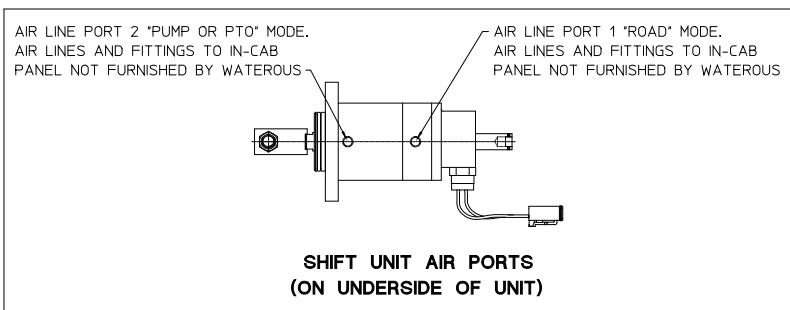
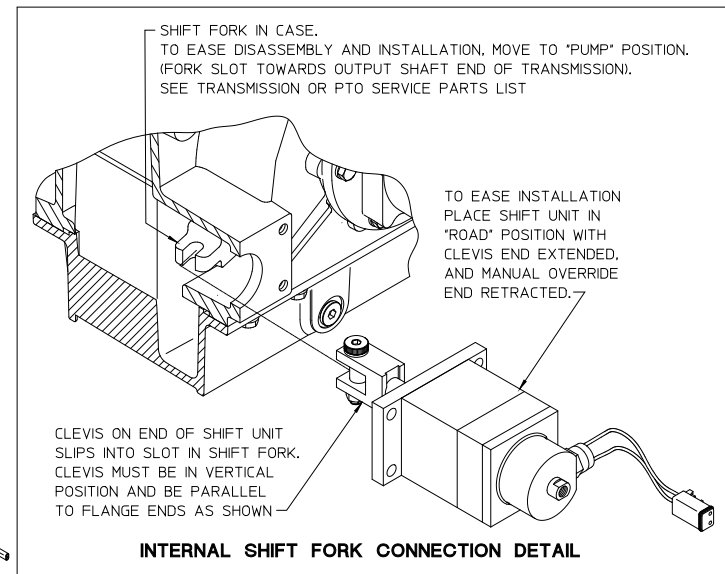
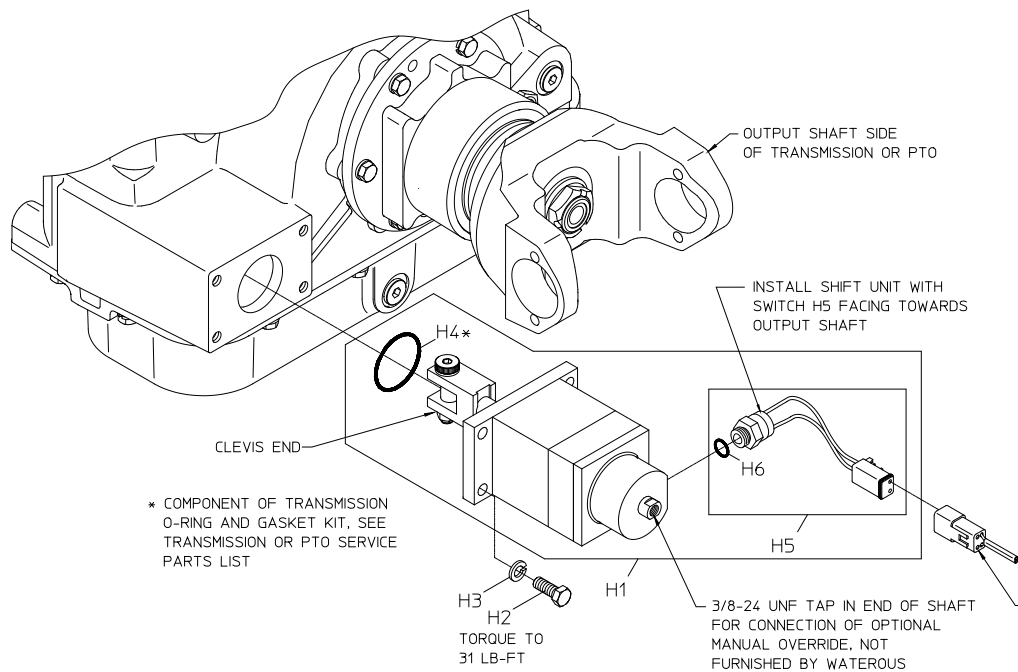
**Waterous Company 125 Hardman Avenue South, South St. Paul, Minnesota 55075 USA (651) 450-5000**

**When ordering parts please supply pump serial number.**

## Shift Unit

| REF.<br>NO. | DESCRIPTION   |
|-------------|---|
| H1          | Shift Unit Assembly (Includes Ref. No.'s H4 and H5) |
| H2          | Hex Hd Screw, 3/8-16 x 1 in.                        |
| H3          | Lock Washer, 3/8 in.                                |

| REF.<br>NO. | DESCRIPTION                   |
|-------------|-------------------------------|
| H4          | O-ring, 1-13/16 x 2 in.       |
| H5          | Switch (Includes Ref. No. H6) |
| H6          | O-ring, 1/2 x 5/8 in.         |



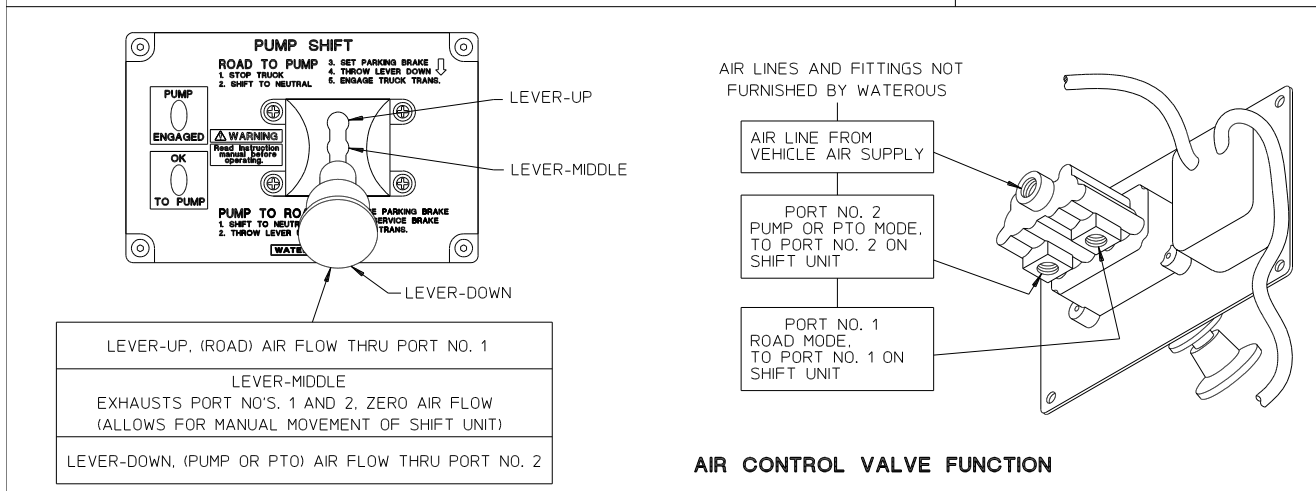
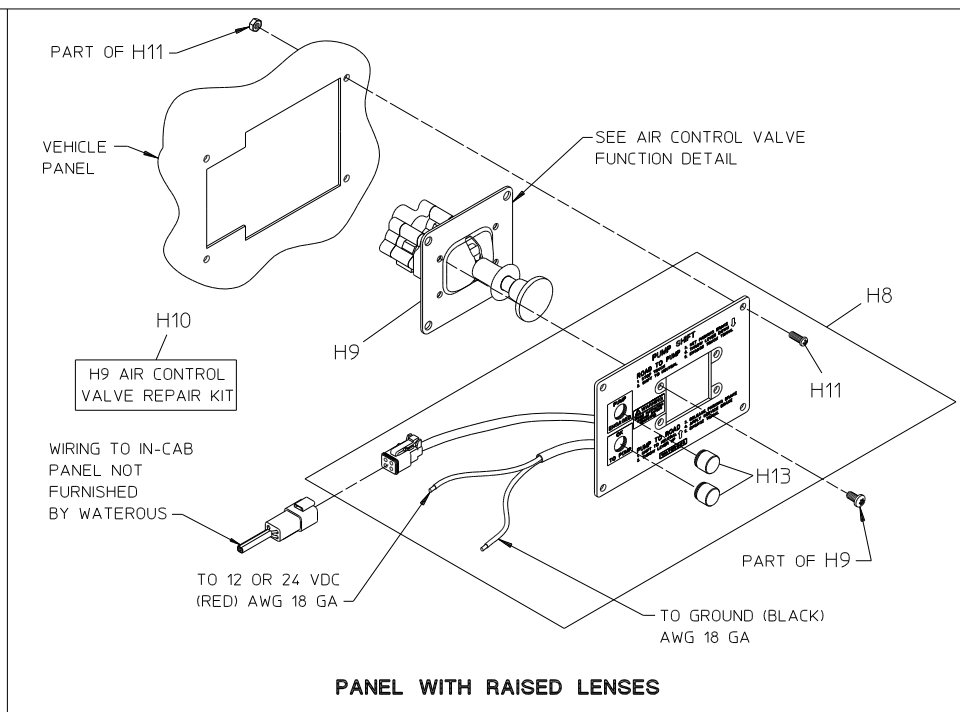
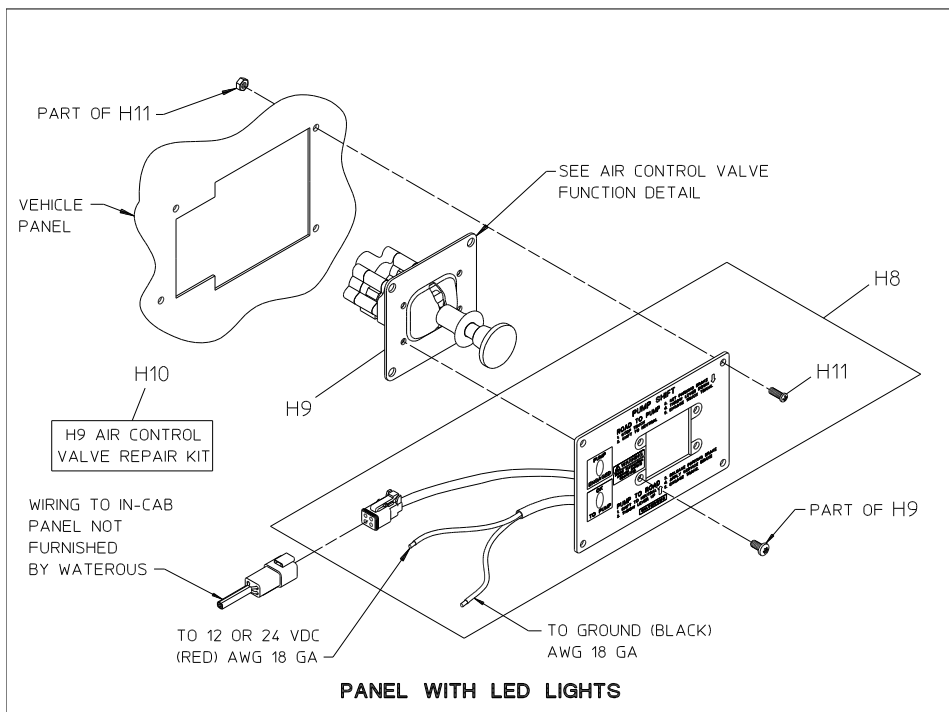
#### SHIFT UNIT

## Optional Control Panels

### In-Cab Panels

| REF.<br>NO. | DESCRIPTION  |
|-------------|--|
| H8          | In-Cab Panel (Includes four Ref. No. H11 mounting screws and nuts)                 |
| H9          | Air Control Valve (Includes four 10-32 x 1/2 in. Torx Button Head mounting screws) |

| REF.<br>NO. | DESCRIPTION  |
|-------------|--|
| H10         | Air Control Valve Repair Kit                                       |
| H11         | Flat Hd Screw 10-24 x 3/4 in. and 10-24 Hex Nut (For In-Cab Panel) |
| H13         | Green Lens Cap   |



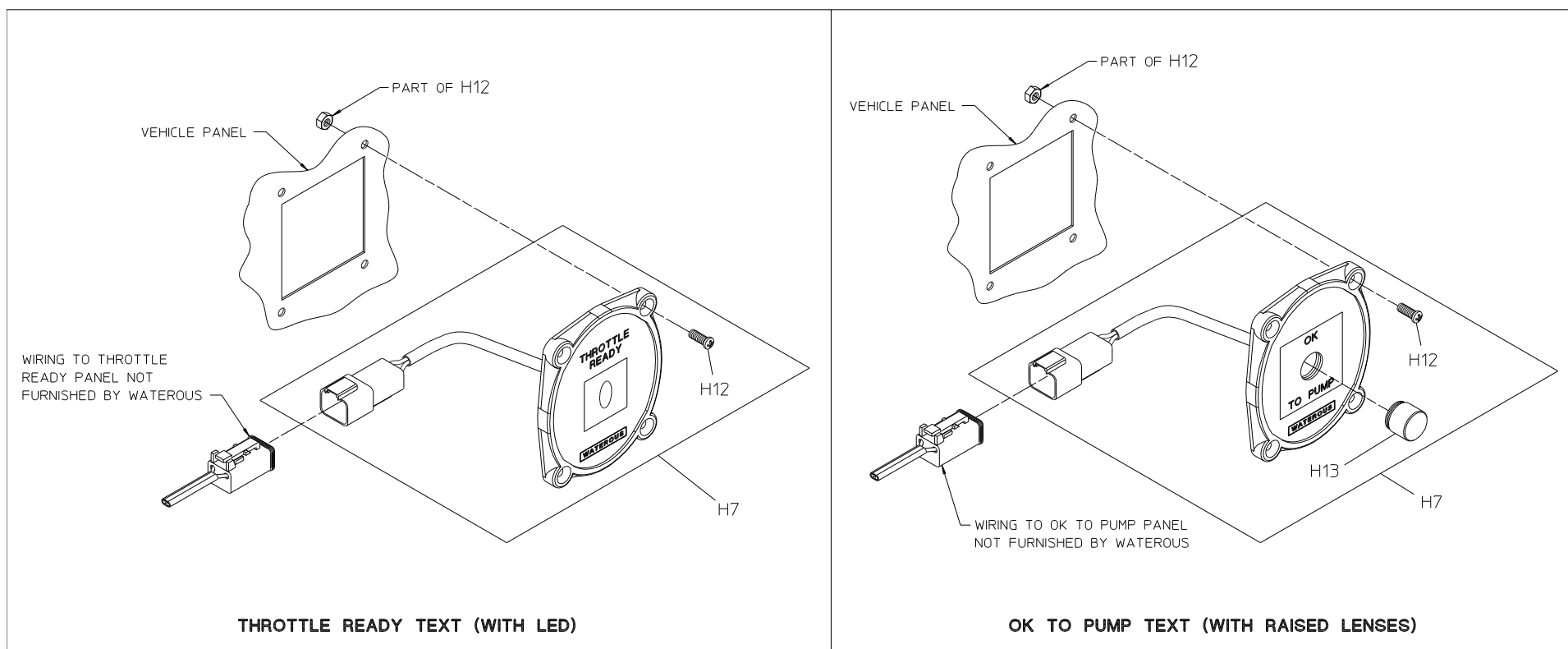
## IN-CAB PANEL

PNEUMATIC SHIFT ASSEMBLY  
SPL82990  
WATEROUS COMPANY  
SOUTH ST. PAUL, MN 55075

**Optional Control Panels**  
**Throttle Ready Panel (Located on Operator's Panel)**

| REF.<br>NO. | DESCRIPTION  |
|-------------|--|
| H7          | Throttle Ready Panel (Includes four Ref. No. H12 mounting screws and nuts) |

| REF.<br>NO. | DESCRIPTION   |
|-------------|---|
| H12         | Flat Hd Screw, 6-32 x 3/4 in. and 6-32 Hex Nut (For Throttle Ready Panel) |
| H13         | Green Lens Cap  |



## THROTTLE READY PANEL

LOCATED ON OPERATOR'S PANEL

PNEUMATIC SHIFT ASSEMBLY  
SPL82990  
WATEROUS COMPANY  
SOUTH ST. PAUL, MN 55075