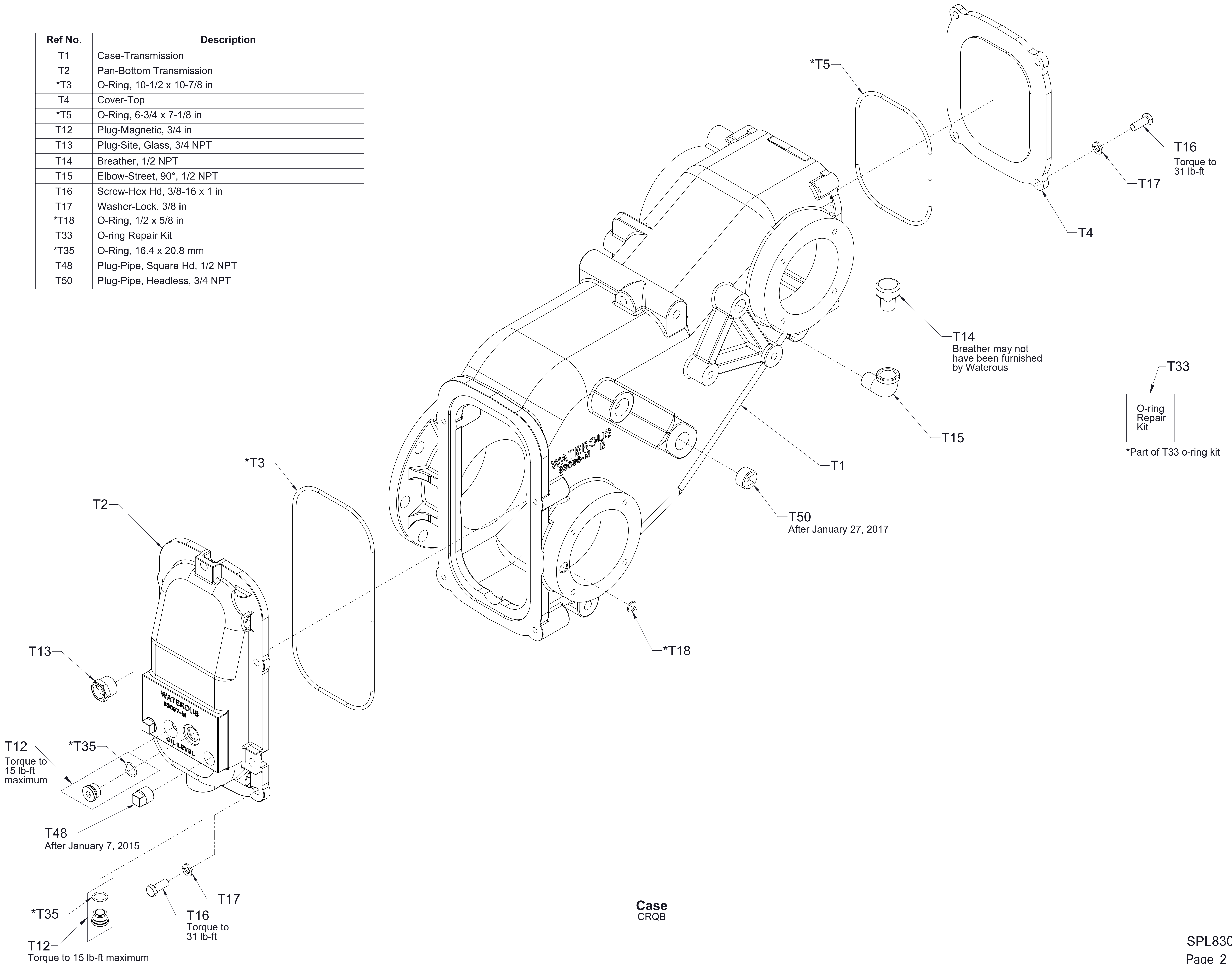


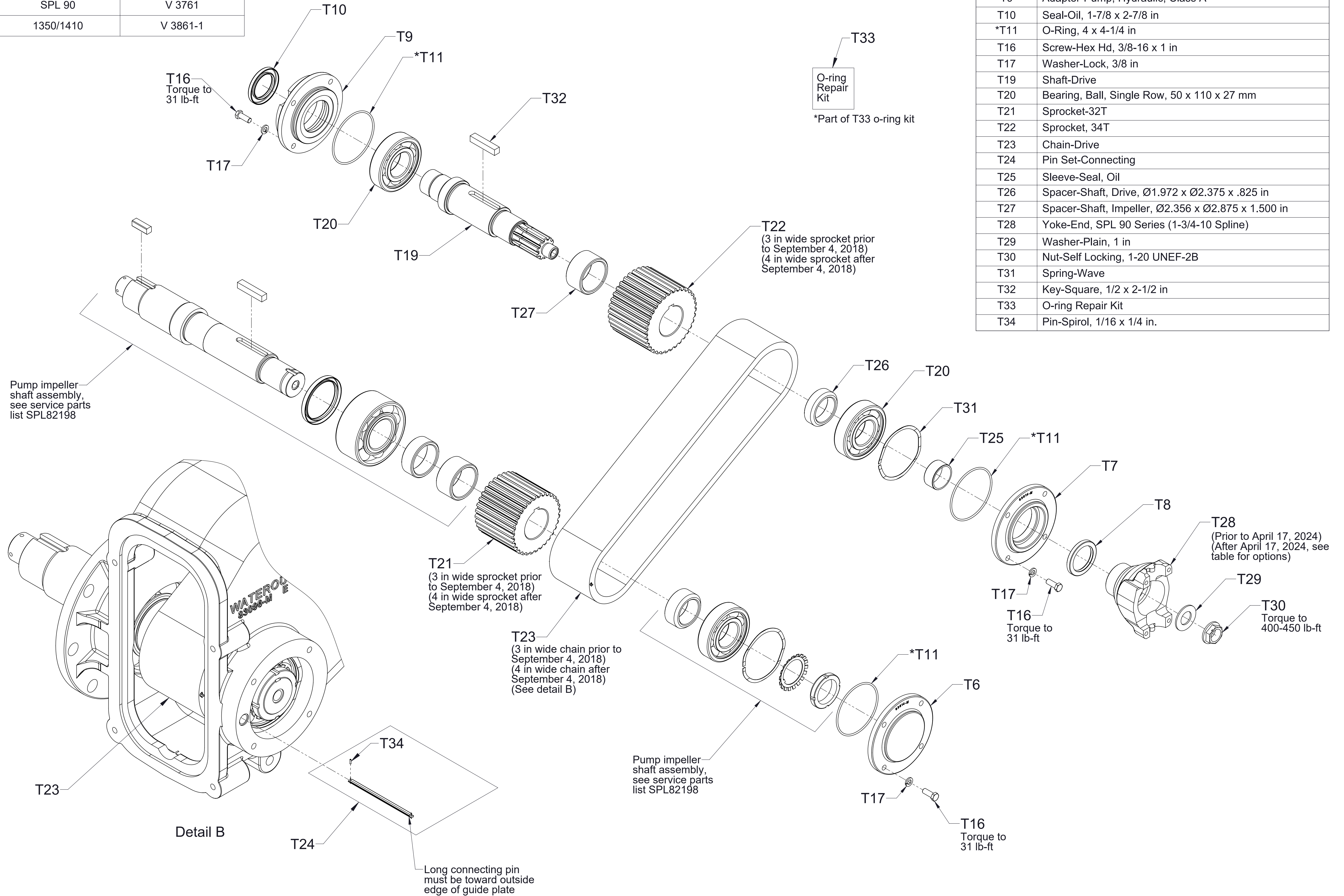
**QB Series Transmission
Service Parts List**

| Pump Model (Located on Pump Serial Plate) | Component | See Page |
|--|--------------------|----------|
| CRQB | Case | 2 |
| | Driveline | 3 |
| | Cross-Section View | 4 |
| CXVQB (Front Facing Intake) | Case | 5 |
| | Driveline | 6 |
| | Cross-Section View | 7 |
| CXVQB (Rear Facing Intake) | Case | 8 |
| | Driveline | 9 |
| | Cross-Section View | 10 |

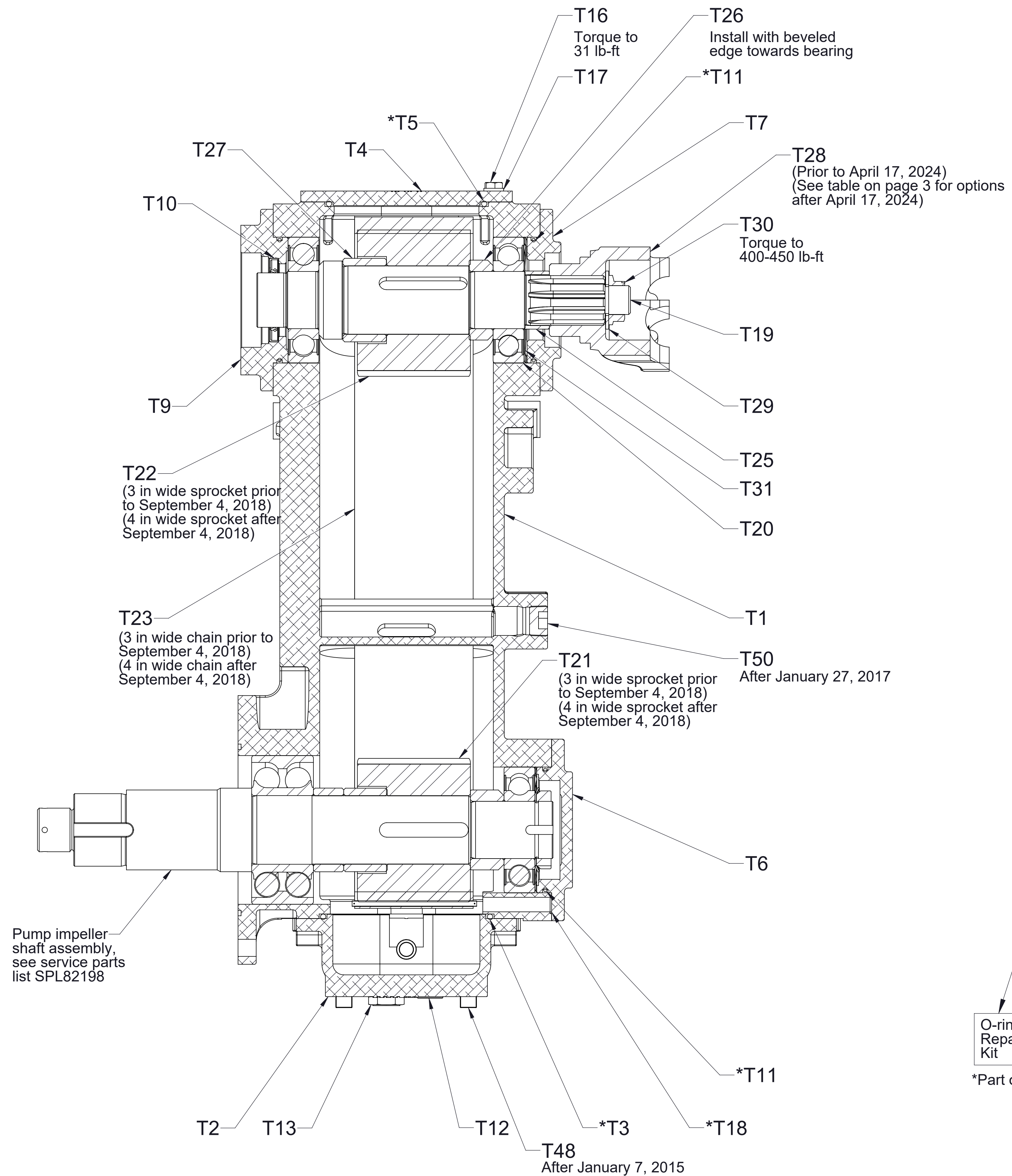
| Ref No. | Description |
|---------|-------------------------------|
| T1 | Case-Transmission |
| T2 | Pan-Bottom Transmission |
| *T3 | O-Ring, 10-1/2 x 10-7/8 in |
| T4 | Cover-Top |
| *T5 | O-Ring, 6-3/4 x 7-1/8 in |
| T12 | Plug-Magnetic, 3/4 in |
| T13 | Plug-Site, Glass, 3/4 NPT |
| T14 | Breather, 1/2 NPT |
| T15 | Elbow-Street, 90°, 1/2 NPT |
| T16 | Screw-Hex Hd, 3/8-16 x 1 in |
| T17 | Washer-Lock, 3/8 in |
| *T18 | O-Ring, 1/2 x 5/8 in |
| T33 | O-ring Repair Kit |
| *T35 | O-Ring, 16.4 x 20.8 mm |
| T48 | Plug-Pipe, Square Hd, 1/2 NPT |
| T50 | Plug-Pipe, Headless, 3/4 NPT |



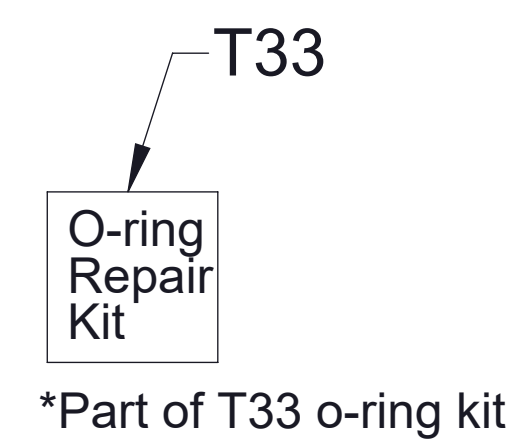
| Optional End Yokes | |
|--------------------|-------------|
| Series | Part Number |
| 1550 | V 3077 |
| SPL 90 | V 3761 |
| 1350/1410 | V 3861-1 |



| Ref No. | Description |
|---------|--|
| T6 | Cover-Bearing |
| T7 | Housing-Seal, Oil |
| T8 | Seal-Oil, 2 x 2-3/4 in |
| T9 | Adapter-Pump, Hydraulic, Class A |
| T10 | Seal-Oil, 1-7/8 x 2-7/8 in |
| *T11 | O-Ring, 4 x 4-1/4 in |
| T16 | Screw-Hex Hd, 3/8-16 x 1 in |
| T17 | Washer-Lock, 3/8 in |
| T19 | Shaft-Drive |
| T20 | Bearing, Ball, Single Row, 50 x 110 x 27 mm |
| T21 | Sprocket-32T |
| T22 | Sprocket, 34T |
| T23 | Chain-Drive |
| T24 | Pin Set-Connecting |
| T25 | Sleeve-Seal, Oil |
| T26 | Spacer-Shaft, Drive, Ø1.972 x Ø2.375 x .825 in |
| T27 | Spacer-Shaft, Impeller, Ø2.356 x Ø2.875 x 1.500 in |
| T28 | Yoke-End, SPL 90 Series (1-3/4-10 Spline) |
| T29 | Washer-Plain, 1 in |
| T30 | Nut-Self Locking, 1-20 UNEF-2B |
| T31 | Spring-Wave |
| T32 | Key-Square, 1/2 x 2-1/2 in |
| T33 | O-ring Repair Kit |
| T34 | Pin-Spirol, 1/16 x 1/4 in. |

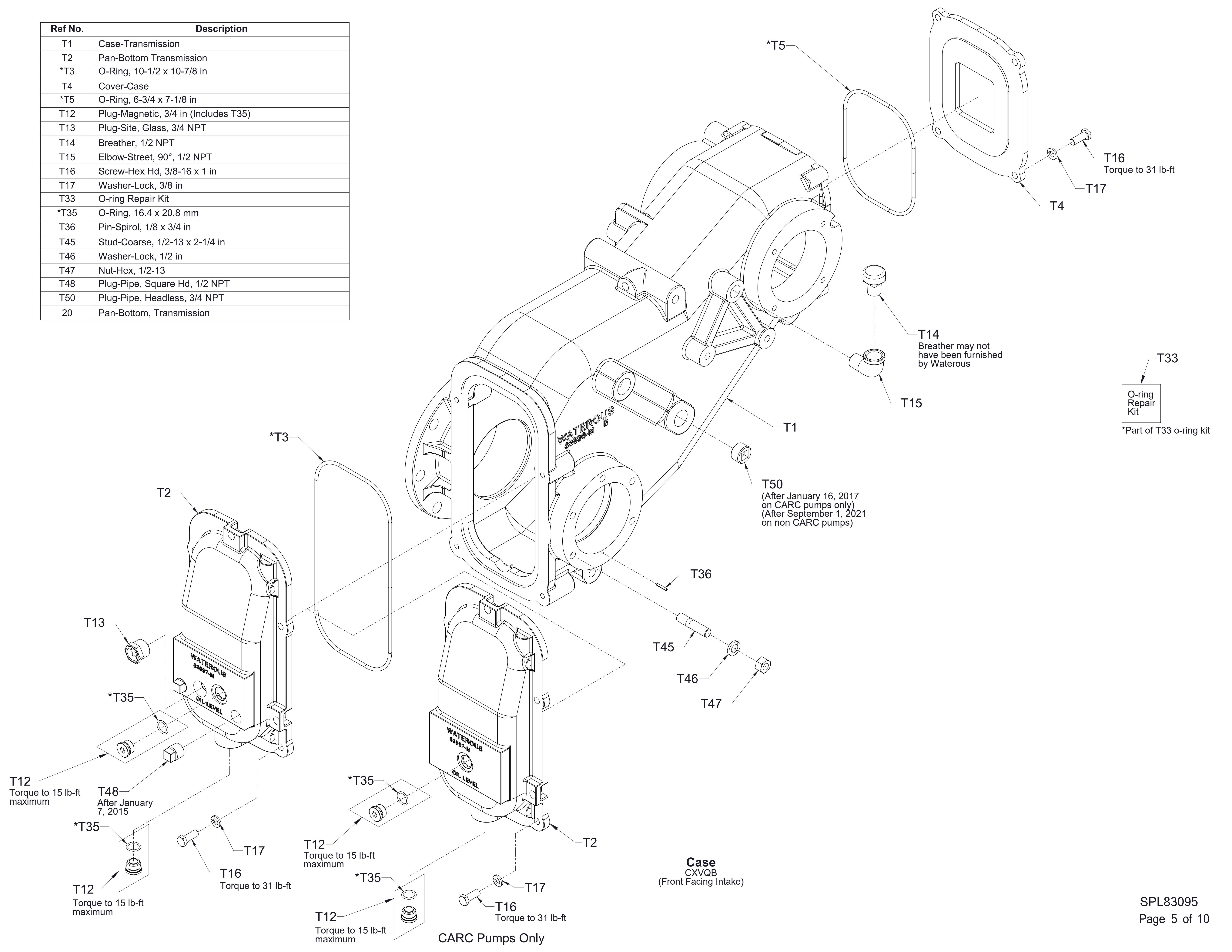


| Ref No. | Description |
|---------|--|
| T1 | Case-Transmission |
| T2 | Pan-Bottom Transmission |
| *T3 | O-Ring, 10-1/2 x 10-7/8 in |
| T4 | Cover-Top |
| *T5 | O-Ring, 6-3/4 x 7-1/8 in |
| T6 | Cover-Bearing |
| T9 | Adapter-Pump, Hydraulic, Class A |
| T10 | Seal-Oil, 1-7/8 x 2-7/8 in |
| *T11 | O-Ring, 4 x 4-1/4 in |
| T12 | Plug-Magnetic, 3/4 in (Includes T35) |
| T13 | Plug-Site, Glass, 3/4 NPT |
| T16 | Screw-Hex Hd, 3/8-16 x 1 in |
| T17 | Washer-Lock, 3/8 in |
| T7 | Housing-Seal, Oil |
| *T18 | O-Ring, 1/2 x 5/8 in |
| T19 | Shaft-Drive |
| T20 | Bearing, Ball, Single Row, 50 x 110 x 27 mm |
| T21 | Sprocket-32T |
| T22 | Sprocket, 34T |
| T23 | Chain-Drive |
| T25 | Sleeve-Seal, Oil |
| T26 | Spacer-Shaft, Drive, Ø1.972 x Ø2.375 x .825 in |
| T27 | Spacer-Shaft, Impeller, Ø2.356 x Ø2.875 x 1.500 in |
| T28 | Yoke-End, SPL 90 Series (1-3/4-10 Spline) |
| T29 | Washer-Plain, 1 in |
| T30 | Nut-Self Locking, 1-20 UNEF-2B |
| T31 | Spring-Wave |
| T33 | O-ring Repair Kit |
| T48 | Plug-Pipe, Square Hd, 1/2 NPT |
| T50 | Plug-Pipe, Headless, 3/4 NPT |



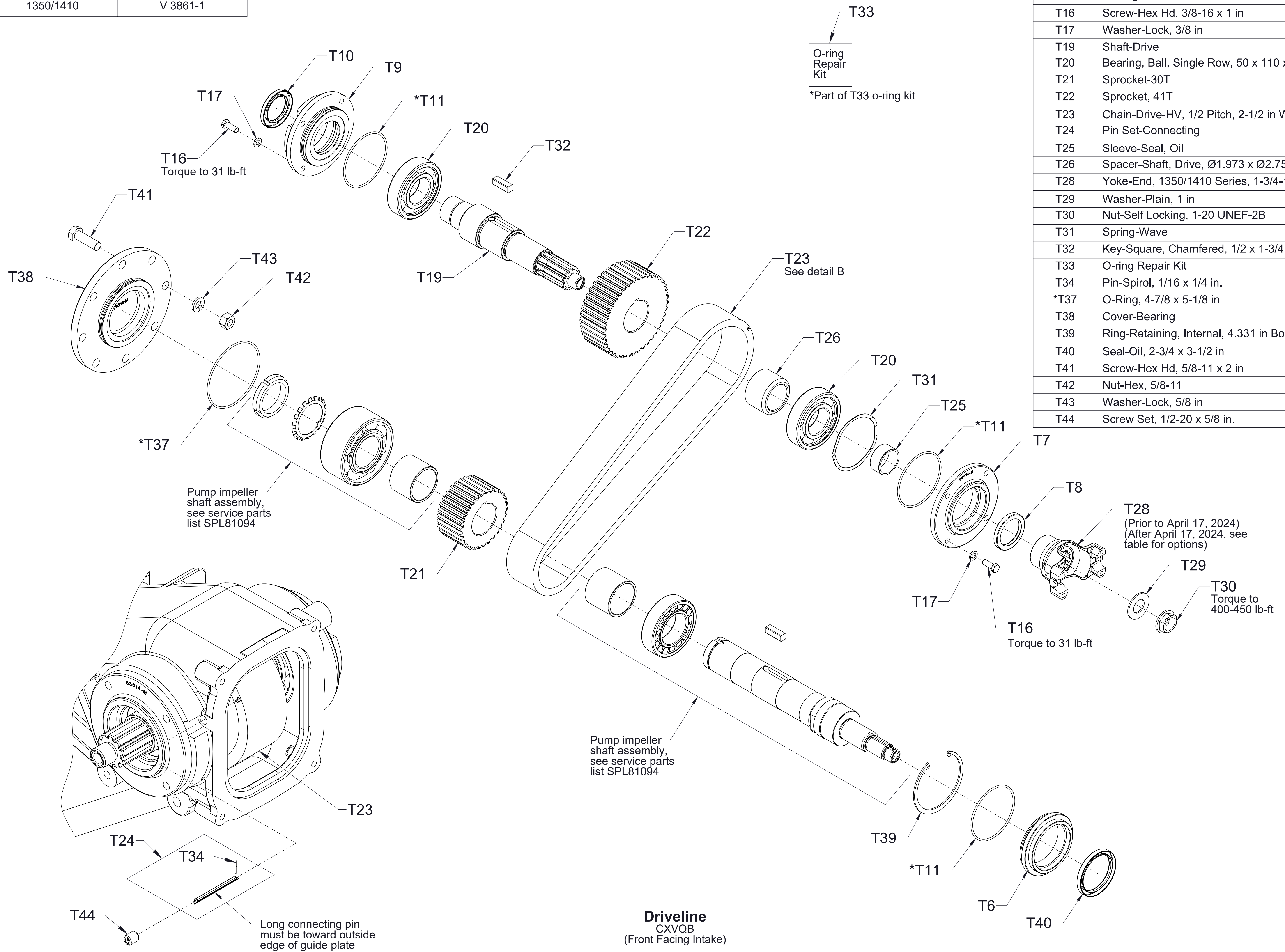
Cross-Section View
CRQB

| Ref No. | Description |
|---------|--------------------------------------|
| T1 | Case-Transmission |
| T2 | Pan-Bottom Transmission |
| *T3 | O-Ring, 10-1/2 x 10-7/8 in |
| T4 | Cover-Case |
| *T5 | O-Ring, 6-3/4 x 7-1/8 in |
| T12 | Plug-Magnetic, 3/4 in (Includes T35) |
| T13 | Plug-Site, Glass, 3/4 NPT |
| T14 | Breather, 1/2 NPT |
| T15 | Elbow-Street, 90°, 1/2 NPT |
| T16 | Screw-Hex Hd, 3/8-16 x 1 in |
| T17 | Washer-Lock, 3/8 in |
| T33 | O-ring Repair Kit |
| *T35 | O-Ring, 16.4 x 20.8 mm |
| T36 | Pin-Spirol, 1/8 x 3/4 in |
| T45 | Stud-Coarse, 1/2-13 x 2-1/4 in |
| T46 | Washer-Lock, 1/2 in |
| T47 | Nut-Hex, 1/2-13 |
| T48 | Plug-Pipe, Square Hd, 1/2 NPT |
| T50 | Plug-Pipe, Headless, 3/4 NPT |
| 20 | Pan-Bottom, Transmission |

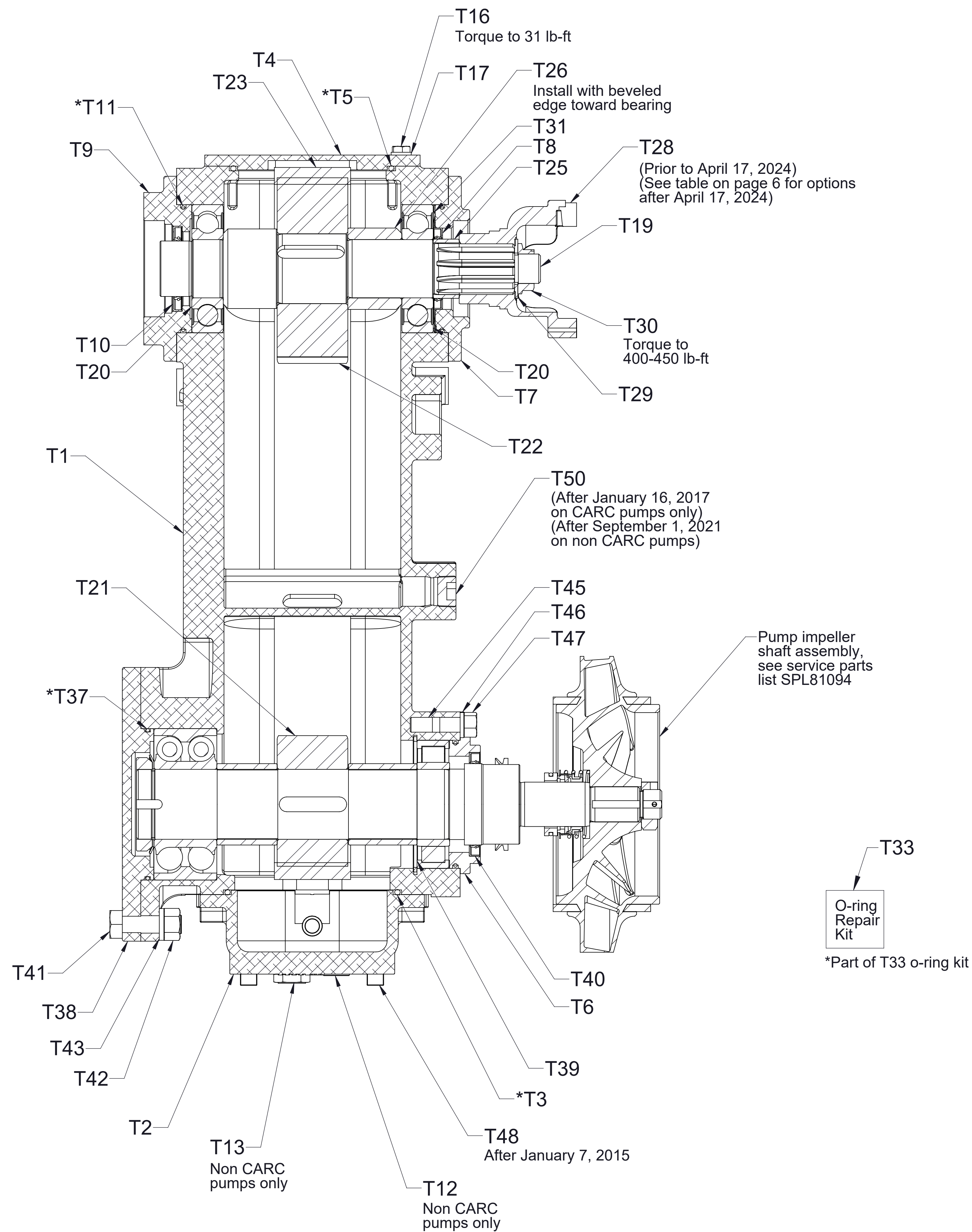


T33
O-ring Repair Kit
 *Part of T33 o-ring kit

| Optional End Yokes | |
|--------------------|-------------|
| Series | Part Number |
| 1550 | V 3077 |
| SPL 90 | V 3761 |
| 1350/1410 | V 3861-1 |



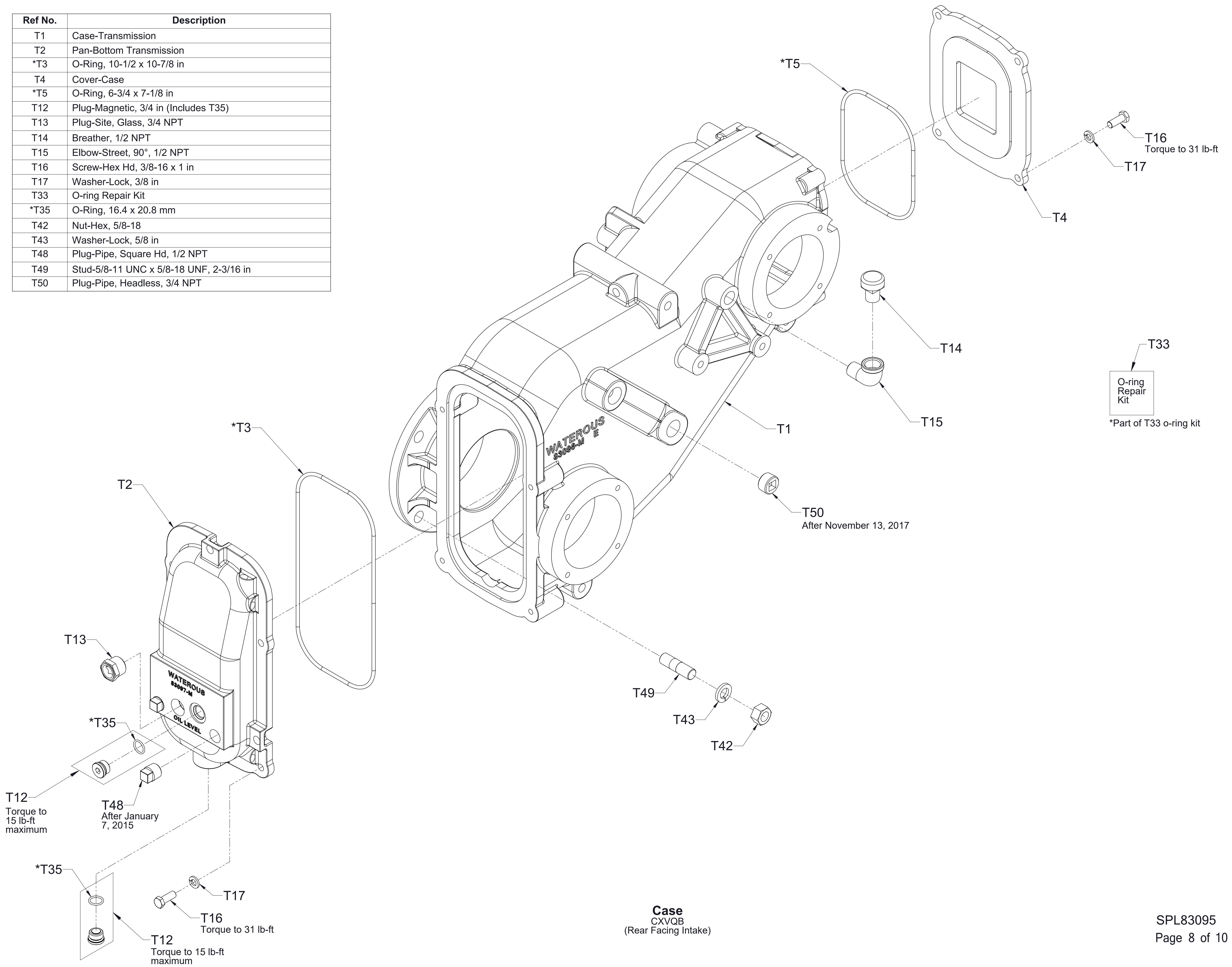
| Ref No. | Description |
|---------|---|
| T6 | Housing-Seal, Oil |
| T7 | Housing-Seal, Oil |
| T8 | Seal-Oil, 2 x 2-3/4 in |
| T9 | Adapter-Pump, Hydraulic, Class A |
| T10 | Seal-Oil, 1-7/8 x 2-7/8 in |
| *T11 | O-Ring, 4 x 4-1/4 in |
| T16 | Screw-Hex Hd, 3/8-16 x 1 in |
| T17 | Washer-Lock, 3/8 in |
| T19 | Shaft-Drive |
| T20 | Bearing, Ball, Single Row, 50 x 110 x 27 mm |
| T21 | Sprocket-30T |
| T22 | Sprocket, 41T |
| T23 | Chain-Drive-HV, 1/2 Pitch, 2-1/2 in Wide |
| T24 | Pin Set-Connecting |
| T25 | Sleeve-Seal, Oil |
| T26 | Spacer-Shaft, Drive, Ø1.973 x Ø2.750 x 1.827 in |
| T28 | Yoke-End, 1350/1410 Series, 1-3/4-10 SAE Spline |
| T29 | Washer-Plain, 1 in |
| T30 | Nut-Self Locking, 1-20 UNEF-2B |
| T31 | Spring-Wave |
| T32 | Key-Square, Chamfered, 1/2 x 1-3/4 in |
| T33 | O-ring Repair Kit |
| T34 | Pin-Spirol, 1/16 x 1/4 in. |
| *T37 | O-Ring, 4-7/8 x 5-1/8 in |
| T38 | Cover-Bearing |
| T39 | Ring-Retaining, Internal, 4.331 in Bore Dia |
| T40 | Seal-Oil, 2-3/4 x 3-1/2 in |
| T41 | Screw-Hex Hd, 5/8-11 x 2 in |
| T42 | Nut-Hex, 5/8-11 |
| T43 | Washer-Lock, 5/8 in |
| T44 | Screw Set, 1/2-20 x 5/8 in. |



| Ref No. | Description |
|---------|---|
| T1 | Case-Transmission |
| T2 | Pan-Bottom Transmission |
| *T3 | O-Ring, 10-1/2 x 10-7/8 in |
| T4 | Cover-Case |
| *T5 | O-Ring, 6-3/4 x 7-1/8 in |
| T6 | Housing-Seal, Oil |
| T7 | Housing-Seal, Oil |
| T8 | Seal-Oil, 2 x 2-3/4 in |
| T9 | Adapter-Pump, Hydraulic, Class A |
| T10 | Seal-Oil, 1-7/8 x 2-7/8 in |
| *T11 | O-Ring, 4 x 4-1/4 in |
| T12 | Plug-Magnetic, 3/4 in (Includes T35) |
| T13 | Plug-Site, Glass, 3/4 NPT |
| T16 | Screw-Hex Hd, 3/8-16 x 1 in |
| T17 | Washer-Lock, 3/8 in |
| T19 | Shaft-Drive |
| T20 | Bearing, Ball, Single Row, 50 x 110 x 27 mm |
| T21 | Sprocket-30T |
| T22 | Sprocket, 41T |
| T23 | Chain-Drive-HV, 1/2 Pitch, 2-1/2 in Wide |
| T25 | Sleeve-Seal, Oil |
| T26 | Spacer-Shaft, Drive, Ø1.973 x Ø2.750 x 1.827 in |
| T28 | Yoke-End, 1350/1410 Series, 1-3/4-10 SAE Spline |
| T29 | Washer-Plain, 1 in |
| T30 | Nut-Self Locking, 1-20 UNEF-2B |
| T31 | Spring-Wave |
| T33 | O-ring Repair Kit |
| *T37 | O-Ring, 4-7/8 x 5-1/8 in |
| T38 | Cover-Bearing |
| T39 | Ring-Retaining, Internal, 4.331 in Bore Dia |
| T40 | Seal-Oil, 2-3/4 x 3-1/2 in |
| T41 | Screw-Hex Hd, 5/8-11 x 2 in |
| T42 | Nut-Hex, 5/8-11 |
| T43 | Washer-Lock, 5/8 in |
| T45 | Stud-Coarse, 1/2-13 x 2-1/4 in |
| T46 | Washer-Lock, 1/2 in |
| T47 | Nut-Hex, 1/2-13 |
| T48 | Plug-Pipe, Square Hd, 1/2 NPT |
| T50 | Plug-Pipe, Headless, 3/4 NPT |
| 55 | Impeller |
| 56 | Ring-Wear |

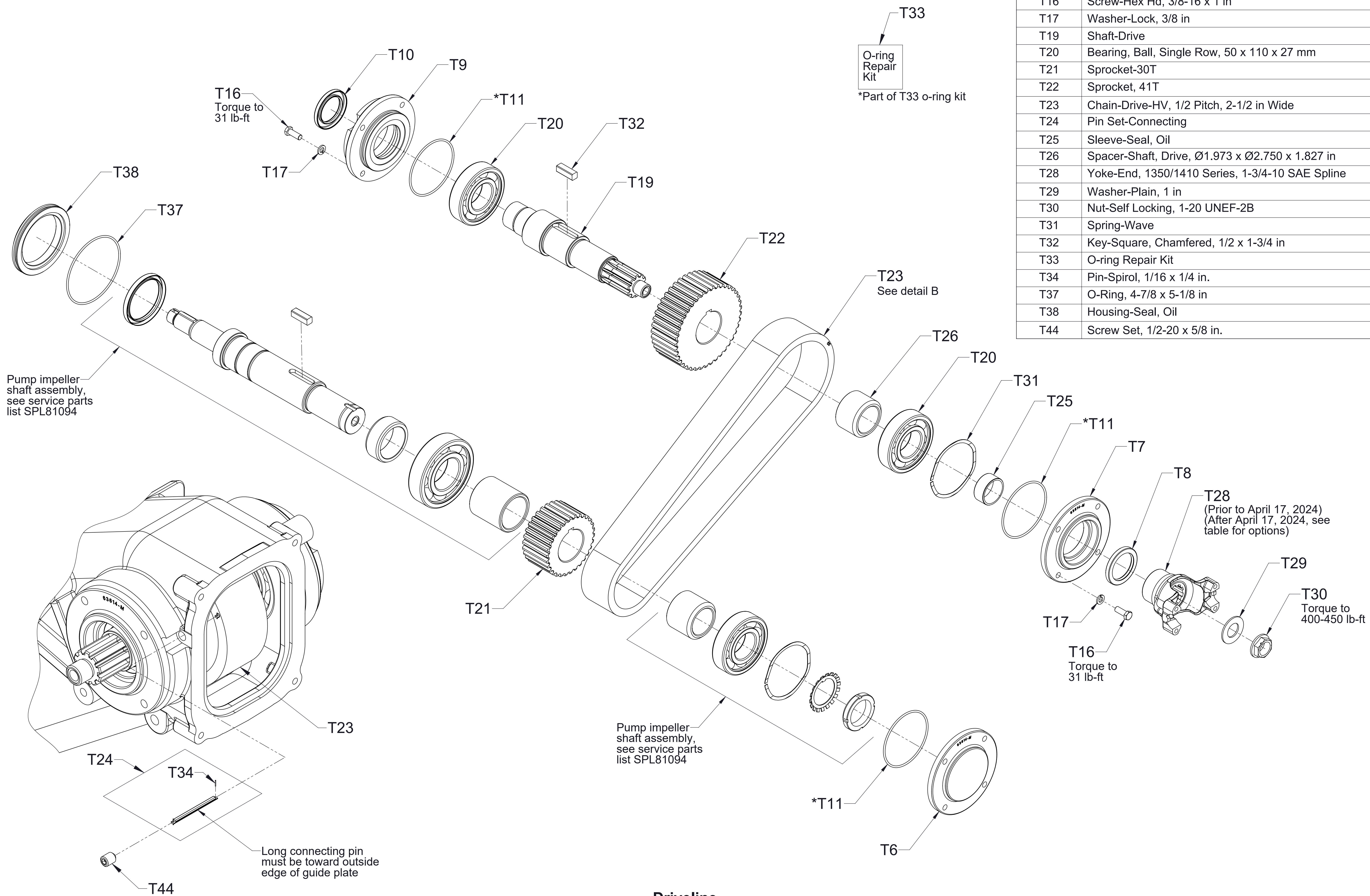
Cross-Section View
CXVQB
(Front Facing Intake)

| Ref No. | Description |
|---------|---|
| T1 | Case-Transmission |
| T2 | Pan-Bottom Transmission |
| *T3 | O-Ring, 10-1/2 x 10-7/8 in |
| T4 | Cover-Case |
| *T5 | O-Ring, 6-3/4 x 7-1/8 in |
| T12 | Plug-Magnetic, 3/4 in (Includes T35) |
| T13 | Plug-Site, Glass, 3/4 NPT |
| T14 | Breather, 1/2 NPT |
| T15 | Elbow-Street, 90°, 1/2 NPT |
| T16 | Screw-Hex Hd, 3/8-16 x 1 in |
| T17 | Washer-Lock, 3/8 in |
| T33 | O-ring Repair Kit |
| *T35 | O-Ring, 16.4 x 20.8 mm |
| T42 | Nut-Hex, 5/8-18 |
| T43 | Washer-Lock, 5/8 in |
| T48 | Plug-Pipe, Square Hd, 1/2 NPT |
| T49 | Stud-5/8-11 UNC x 5/8-18 UNF, 2-3/16 in |
| T50 | Plug-Pipe, Headless, 3/4 NPT |



| Optional End Yokes | |
|--------------------|-------------|
| Series | Part Number |
| 1550 | V 3077 |
| SPL 90 | V 3761 |
| 1350/1410 | V 3861-1 |

| Ref No. | Description |
|---------|---|
| T6 | Cover-Bearing |
| T7 | Housing-Seal, Oil |
| T8 | Seal-Oil, 2 x 2-3/4 in |
| T9 | Adapter-Pump, Hydraulic, Class A |
| T10 | Seal-Oil, 1-7/8 x 2-7/8 in |
| *T11 | O-Ring, 4 x 4-1/4 in |
| T16 | Screw-Hex Hd, 3/8-16 x 1 in |
| T17 | Washer-Lock, 3/8 in |
| T19 | Shaft-Drive |
| T20 | Bearing, Ball, Single Row, 50 x 110 x 27 mm |
| T21 | Sprocket-30T |
| T22 | Sprocket, 41T |
| T23 | Chain-Drive-HV, 1/2 Pitch, 2-1/2 in Wide |
| T24 | Pin Set-Connecting |
| T25 | Sleeve-Seal, Oil |
| T26 | Spacer-Shaft, Drive, Ø1.973 x Ø2.750 x 1.827 in |
| T28 | Yoke-End, 1350/1410 Series, 1-3/4-10 SAE Spline |
| T29 | Washer-Plain, 1 in |
| T30 | Nut-Self Locking, 1-20 UNEF-2B |
| T31 | Spring-Wave |
| T32 | Key-Square, Chamfered, 1/2 x 1-3/4 in |
| T33 | O-ring Repair Kit |
| T34 | Pin-Spirol, 1/16 x 1/4 in. |
| T37 | O-Ring, 4-7/8 x 5-1/8 in |
| T38 | Housing-Seal, Oil |
| T44 | Screw Set, 1/2-20 x 5/8 in. |



T33
 O-ring Repair Kit
 *Part of T33 o-ring kit

Pump impeller shaft assembly, see service parts list SPL81094

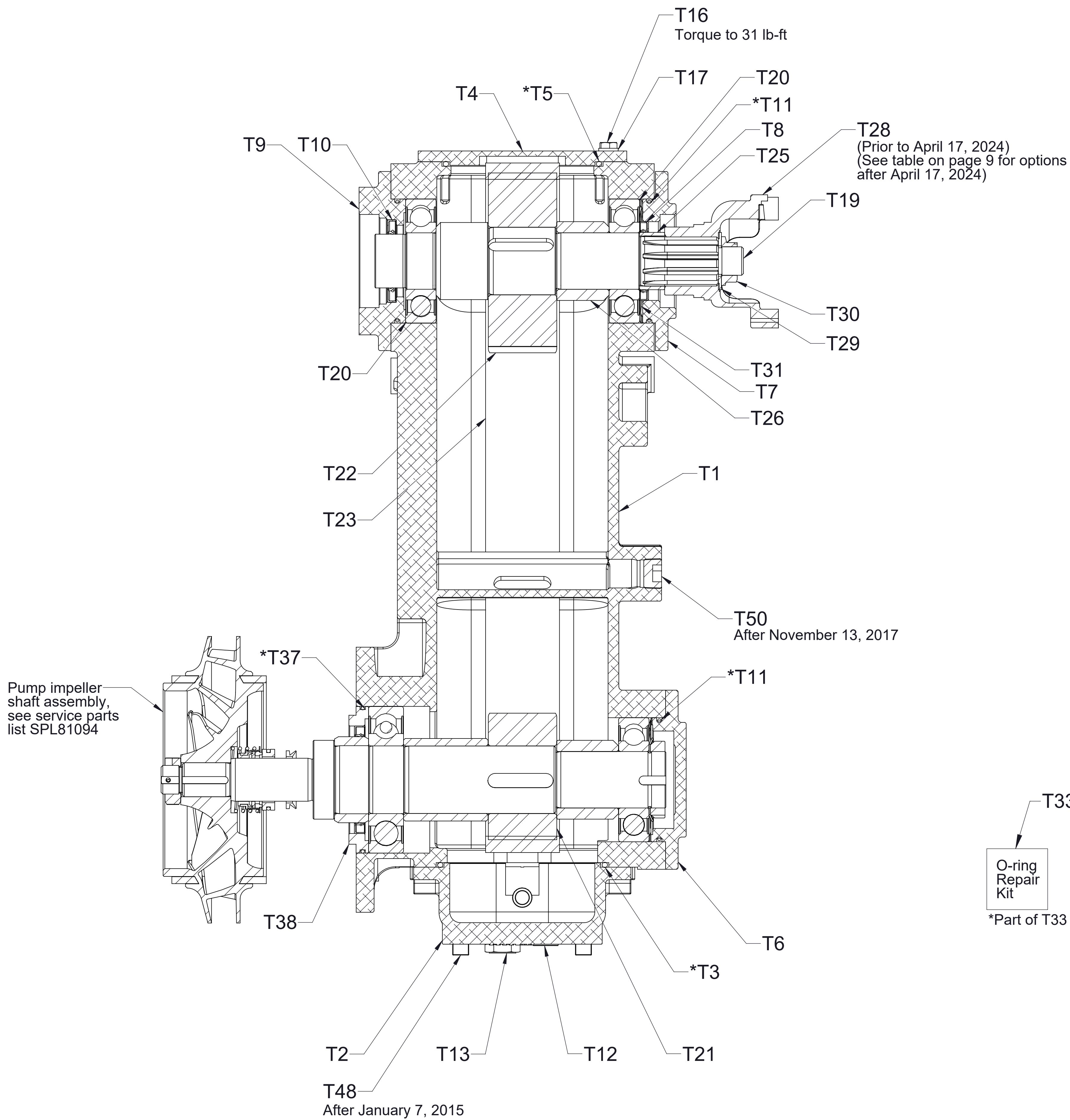
Pump impeller shaft assembly, see service parts list SPL81094

Long connecting pin must be toward outside edge of guide plate

T28
 (Prior to April 17, 2024)
 (After April 17, 2024, see table for options)

Driveline
 CXVQB
 (Rear Facing Intake)

Detail B



| Ref No. | Description |
|---------|---|
| T1 | Case-Transmission |
| T2 | Pan-Bottom Transmission |
| *T3 | O-Ring, 10-1/2 x 10-7/8 in |
| T4 | Cover-Case |
| *T5 | O-Ring, 6-3/4 x 7-1/8 in |
| T6 | Cover-Bearing |
| T7 | Housing-Seal, Oil |
| T8 | Seal-Oil, 2 x 2-3/4 in |
| T9 | Adapter-Pump, Hydraulic, Class A |
| T10 | Seal-Oil, 1-7/8 x 2-7/8 in |
| *T11 | O-Ring, 4 x 4-1/4 in |
| T12 | Plug-Magnetic, 3/4 in (Includes T35) |
| T13 | Plug-Site, Glass, 3/4 NPT |
| T16 | Screw-Hex Hd, 3/8-16 x 1 in |
| T17 | Washer-Lock, 3/8 in |
| T19 | Shaft-Drive |
| T20 | Bearing, Ball, Single Row, 50 x 110 x 27 mm |
| T21 | Sprocket-30T |
| T22 | Sprocket, 41T |
| T23 | Chain-Drive-HV, 1/2 Pitch, 2-1/2 in Wide |
| T25 | Sleeve-Seal, Oil |
| T26 | Spacer-Shaft, Drive, Ø1.973 x Ø2.750 x 1.827 in |
| T28 | Yoke-End, 1350/1410 Series, 1-3/4-10 SAE Spline |
| T29 | Washer-Plain, 1 in |
| T30 | Nut-Self Locking, 1-20 UNEF-2B |
| T31 | Spring-Wave |
| T33 | O-ring Repair Kit |
| *T37 | O-Ring, 4-7/8 x 5-1/8 in |
| T38 | Housing-Seal, Oil |
| T48 | Plug-Pipe, Square Hd, 1/2 NPT |
| T50 | Plug-Pipe, Headless, 3/4 NPT |
| 49 | Impeller |
| 50 | Ring-Wear |

Cross-Section View
CXVQB
(Rear Facing Intake)