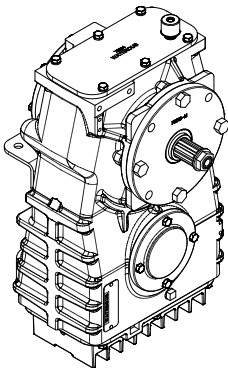


TQC Series P.T.O.

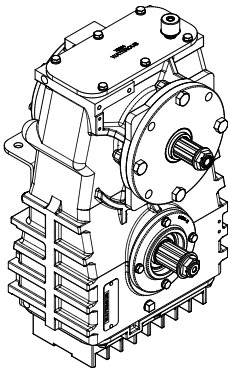
Service Parts List

Index:



OUTPUT SHAFT ON OPPOSITE SIDE  
OF INPUT SHAFT

Output Shaft Location	Component		See Sheet
Opposite Side of Input Shaft	Driveline		2, 3
	Cross-Section View		4, 5
	Case	Input Shaft Side	6, 7
		Output Shaft Side	8, 9
Same Side as Input Shaft	Driveline		10, 11
	Cross-Section View		12,13
	Case	Side without Shafts	14, 15
		Side with Shafts	16, 17
Optional Cooling Line Fittings when used with a model CPK-5 Pump			18, 19

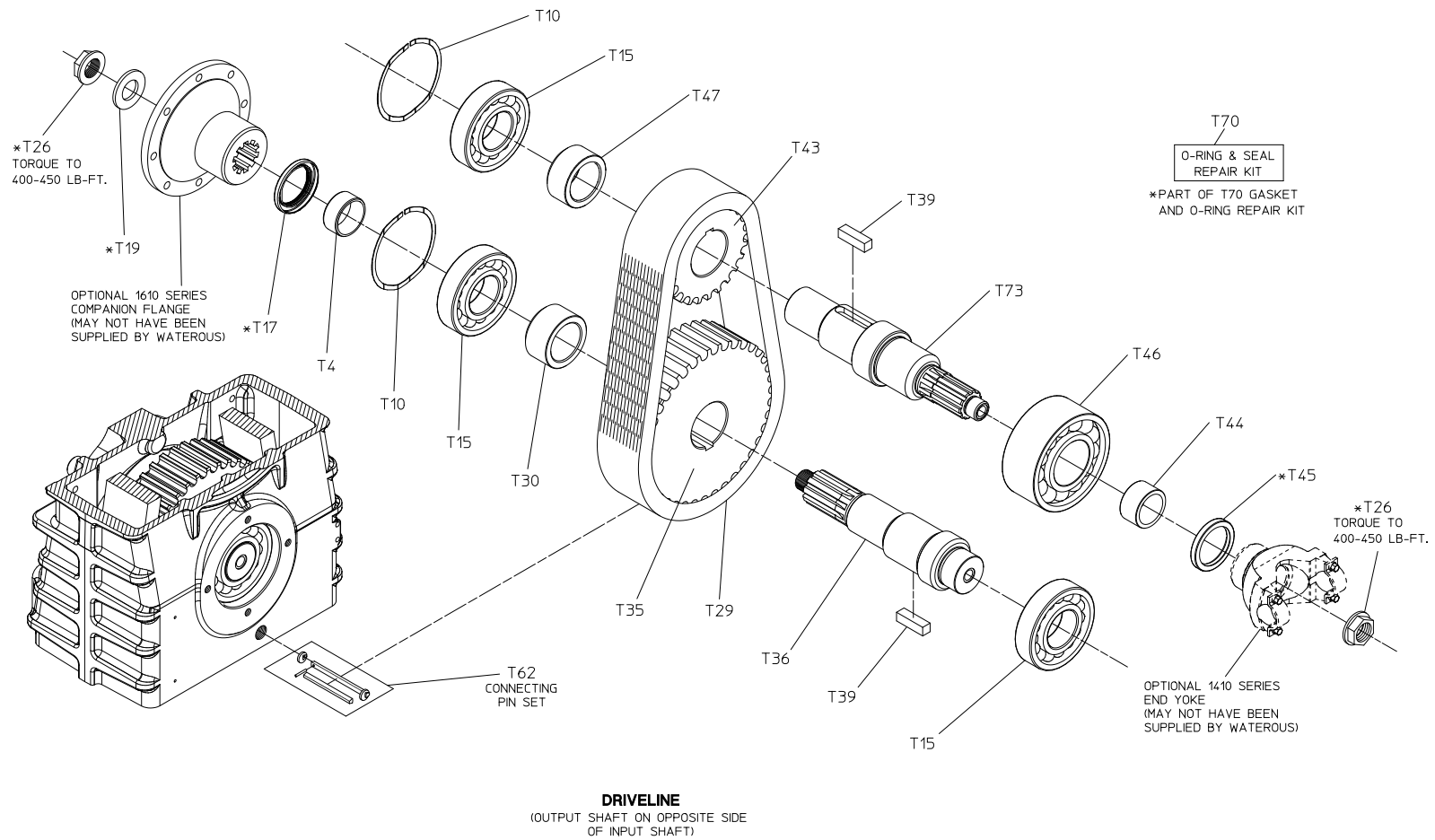


OUTPUT SHAFT ON SAME SIDE  
AS INPUT SHAFT

**Driveline**  
**(Output Shaft on Opposite Side of Input Shaft)**

REF NO.	DESCRIPTION
T4	Oil Seal Sleeve
T10	Wave Spring
T15	Single Row Ball Bearing
T17	Oil Seal, 2 x 2-3/4 in.
T19	Plain Washer, 1 in.
T26	Lock Nut, 1 in.
T29	Chain, 3/4 in. Pitch
T30	Drive Shaft Spacer
T35	Drive Sprocket
T36	Drive Shaft

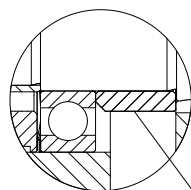
REF NO.	DESCRIPTION
T39	Square Key, 1/2 x 1-3/4 in.
T43	Driven Sprocket
T44	Oil Seal Sleeve
T45	Oil Seal, 2 x 2-5/8 in.
T46	Double Row Ball Bearing
T47	Bearing Spacer
T62	Connecting Pin Set
T70	O-ring Replacement Kit
T73	Driven Shaft



**Cross-Section View**  
**(Output Shaft on Opposite Side of Input Shaft)**

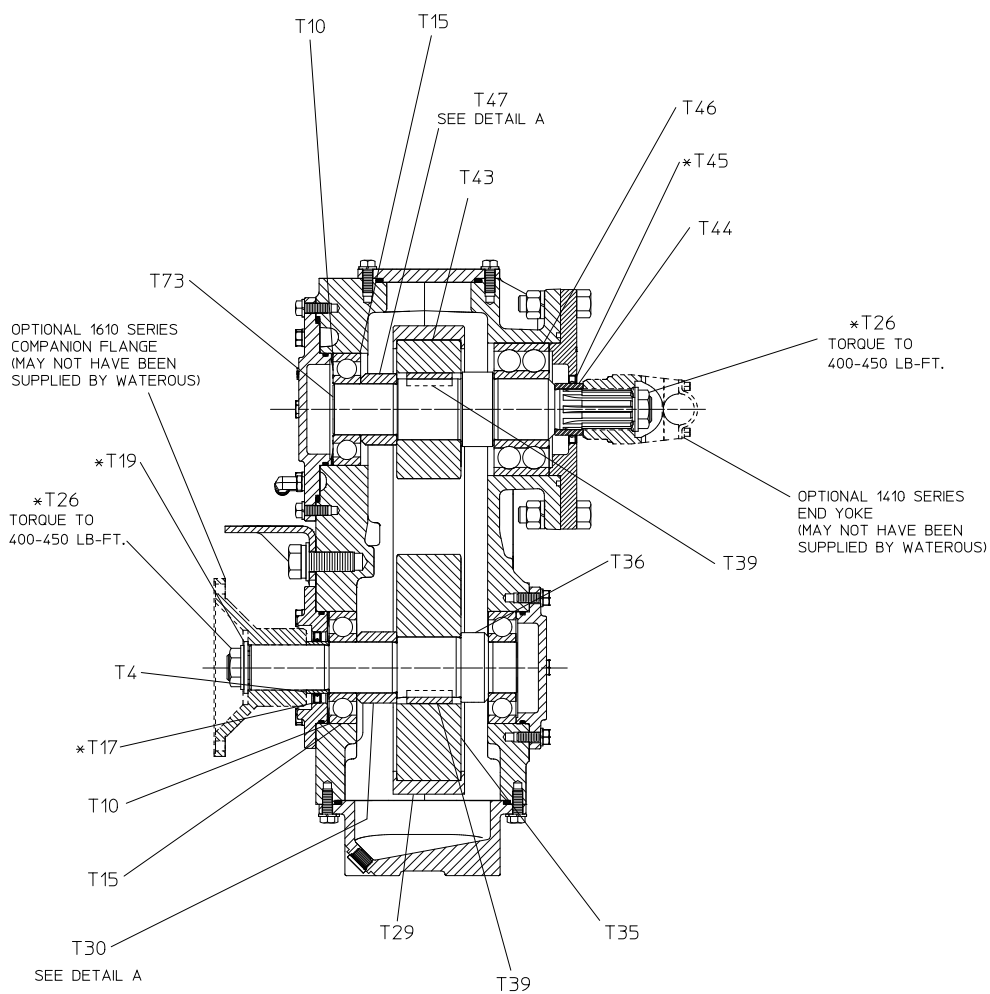
REF NO.	DESCRIPTION
T4	Oil Seal Sleeve
T10	Wave Spring
T15	Single Row Ball Bearing
T17	Oil Seal, 2 x 2-3/4 in.
T19	Plain Washer, 1 in.
T26	Lock Nut, 1 in.
T29	Chain, 3/4 in. Pitch
T30	Drive Shaft Spacer
T35	Drive Sprocket
T36	Drive Shaft

REF NO.	DESCRIPTION
T39	Square Key, 1/2 x 1-3/4 in.
T43	Driven Sprocket
T44	Oil Seal Sleeve
T45	Oil Seal, 2 x 2-5/8 in.
T46	Double Row Ball Bearing
T47	Bearing Spacer
T70	O-ring Replacement Kit
T73	Driven Shaft



DETAIL A  
INSTALL WITH BEVELED  
EDGE TOWARD BEARING

T70  
O-RING & SEAL  
REPAIR KIT  
\*PART OF T70 GASKET  
AND O-RING REPAIR KIT

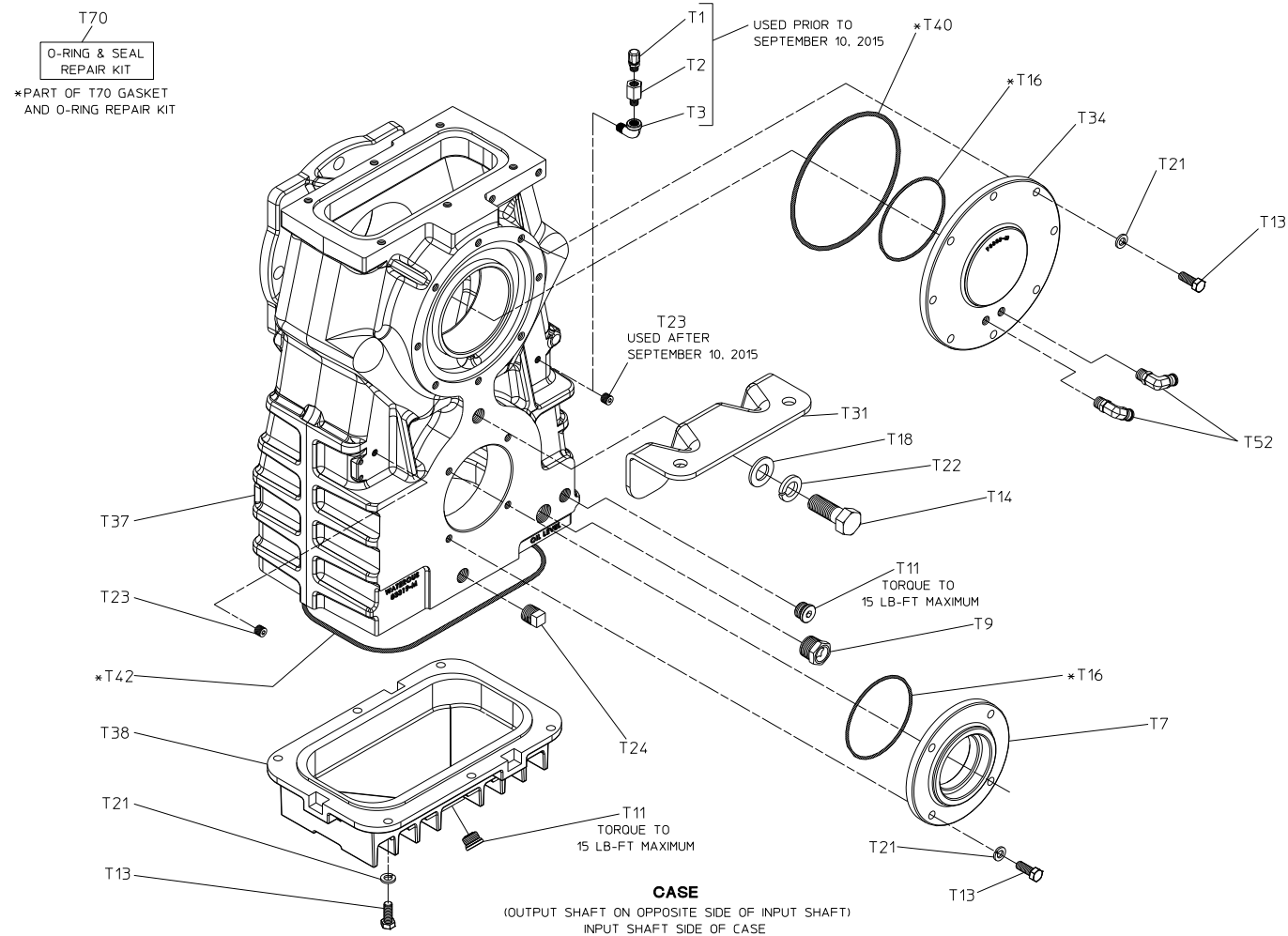


**CROSS-SECTION VIEW**  
(OUTPUT SHAFT ON OPPOSITE SIDE  
OF INPUT SHAFT)

**Case**  
**(Output Shaft on Opposite Side of Input Shaft)**  
**Input Shaft Side of Case**

REF NO.	DESCRIPTION
T1	Breather, 1/8 NPT
T2	Snubber, 1/8 NPT
T3	Street Elbow, 1/8 NPT
T7	Oil Seal Housing
T9	Sight Plug
T11	Socket Head Plug
T13	Hex Head Screw, 3/8-16 x 1 in.
T14	Hex Head Screw, 3/4-10 x 2 in.
T16	O-ring, 4 x 4-1/4 in.
T18	Plain Washer, 3/4 in.
T21	Lock Washer, 3/8 in.
T22	Lock Washer, 3/4 in.

REF NO.	DESCRIPTION
T23	Pipe Plug, 1/8 NPT
T24	Pipe Plug, 1/2 NPT
T31	Case Mounting Bracket
T34	Bearing Cover
T37	Transmission Case
T38	Transmission Pan
T40	O-ring, 6-3/4 x 7-1/8 in.
T42	O-ring, 10 x 10-3/8 in.
T52	Elbow Adapter, 1/4 NPT x 3/8 Tube
T70	O-ring Replacement Kit

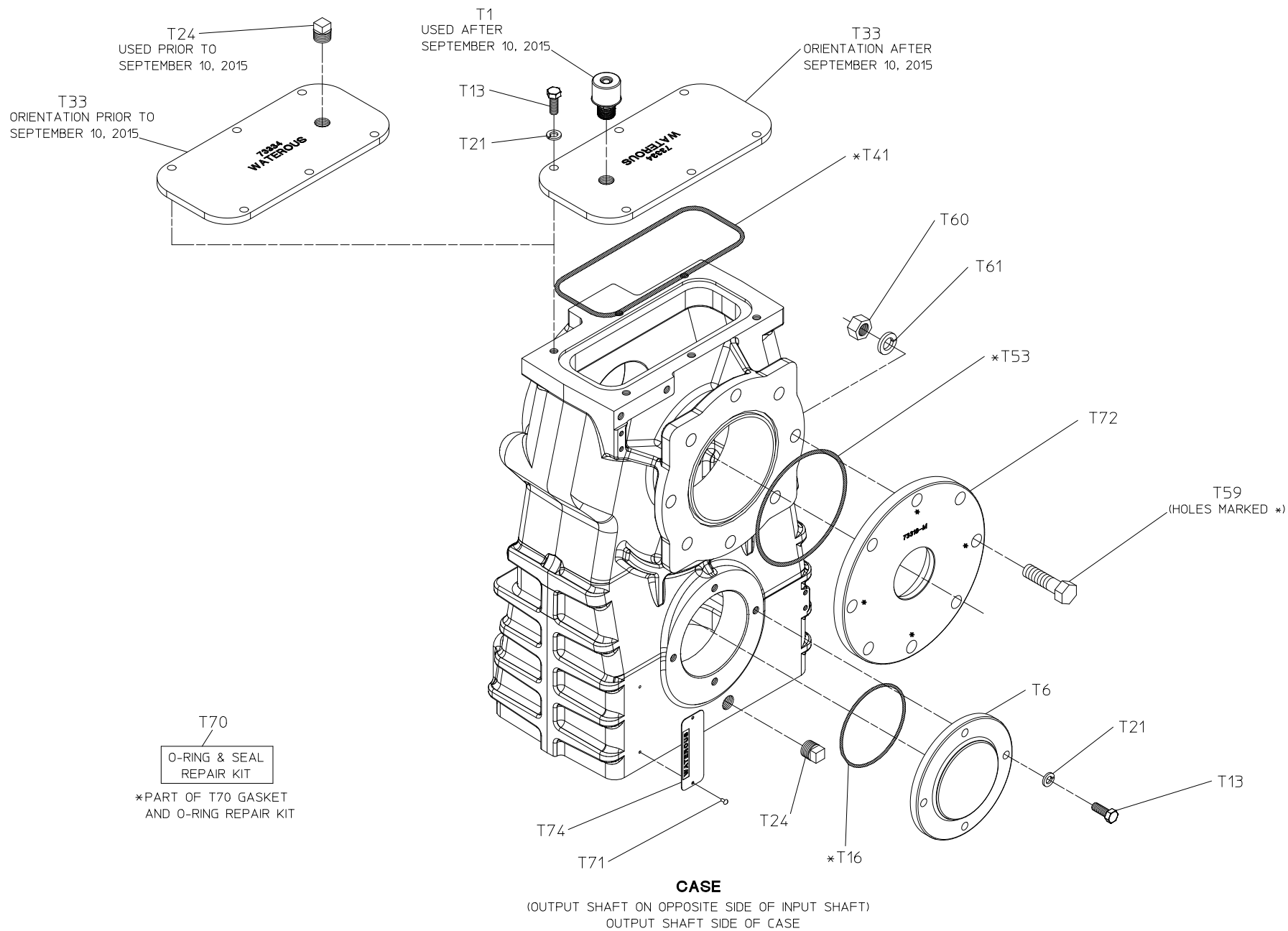


**Case**  
**(Output Shaft on Opposite Side of Input Shaft)**  
**Output Shaft Side of Case**

REF NO.	DESCRIPTION
T1	Breather, 1/2 NPT
T6	Bearing Cover
T13	Hex Head Screw, 3/8-16 x 1 in.
T16	O-ring, 4 x 4-1/4 in.
T21	Lock Washer, 3/8 in.
T24	Pipe Plug, 1/2 in.
T33	Case Cover
T41	O-ring, 7-3/4 x 8-1/8 in.
T51	Adapter, 1/4 NPT x 3/8 Tube

REF NO.	DESCRIPTION
T52	Elbow Adapter, 1/4 NPT x 3/8 Tube
T53	O-ring, 5-5/8 x 5-7/8 in.
T59	Hex Head Screw, 5/8-18 x 2-1/4 in.
T60	Hex Nut, 5/8-18
T61	Lock Washer, 5/8 in.
T70	O-ring Replacement Kit
T71	Drive Screw, #6, 2-1/4 in.
T74	Serial Plate

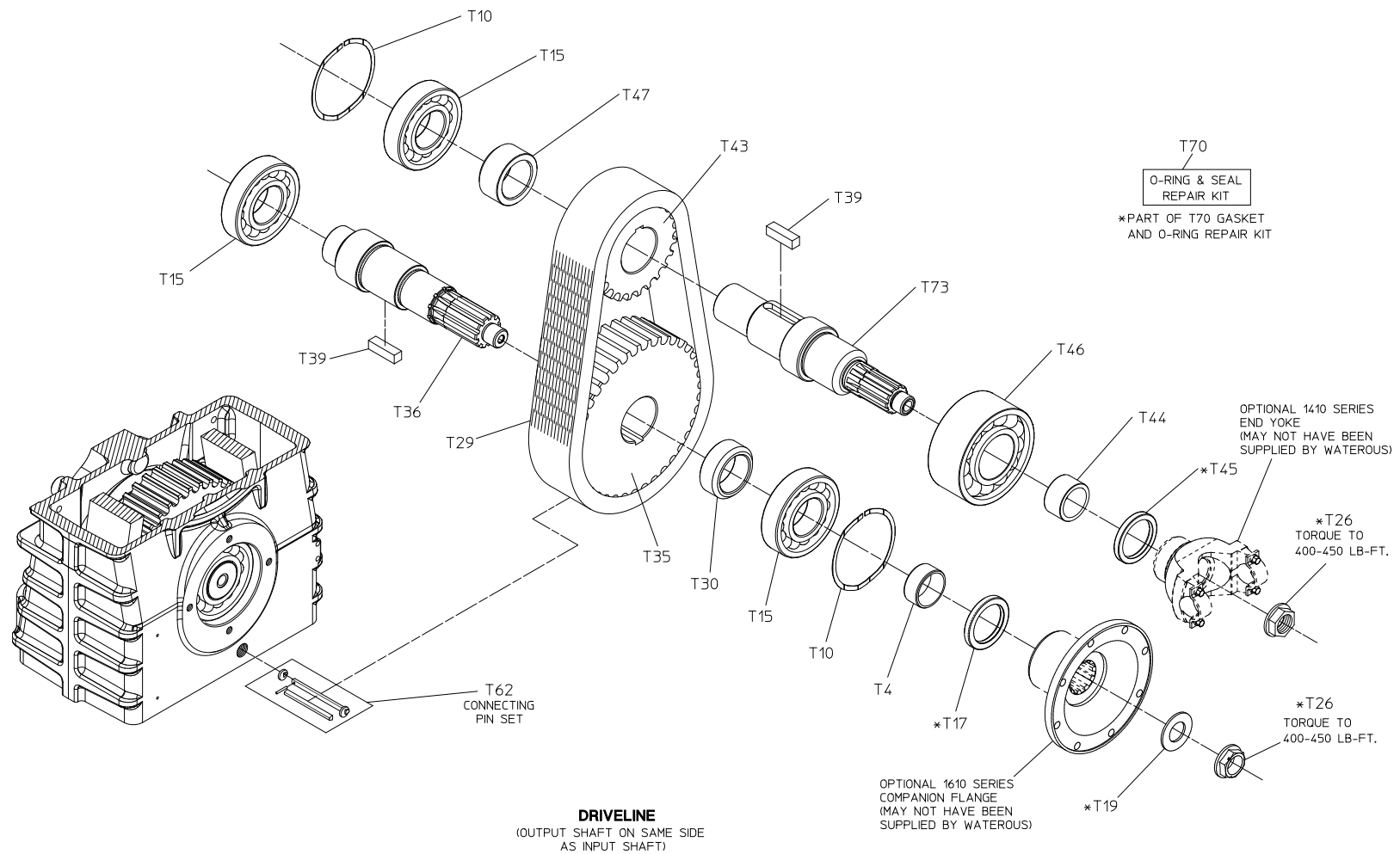




**Driveline**  
**(Output Shaft on Same Side as Input Shaft)**

REF NO.	DESCRIPTION
T4	Oil Seal Sleeve
T10	Wave Spring
T15	Single Row Ball Bearing
T17	Oil Seal, 2 x 2-3/4 in.
T19	Plain Washer, 1 in.
T26	Lock Nut, 1 in.
T29	Chain, 3/4 in. Pitch
T30	Drive Shaft Spacer
T35	Drive Sprocket
T36	Drive Shaft

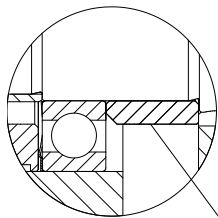
REF NO.	DESCRIPTION
T39	Square Key, 1/2 x 1-3/4 in.
T43	Driven Sprocket
T44	Oil Seal Sleeve
T45	Oil Seal, 2 x 2-5/8 in.
T46	Double Row Ball Bearing
T47	Bearing Spacer
T70	O-ring Replacement Kit
T73	Driven Shaft



**Cross-Section View**  
**(Output Shaft on Same Side as Input Shaft)**

REF NO.	DESCRIPTION
T4	Oil Seal Sleeve
T10	Wave Spring
T15	Single Row Ball Bearing
T17	Oil Seal, 2 x 2-3/4 in.
T19	Plain Washer, 1 in.
T26	Lock Nut, 1 in.
T29	Chain, 3/4 in. Pitch
T30	Drive Shaft Spacer
T35	Drive Sprocket
T36	Drive Shaft

REF NO.	DESCRIPTION
T39	Square Key, 1/2 x 1-3/4 in.
T43	Driven Sprocket
T44	Oil Seal Sleeve
T45	Oil Seal, 2 x 2-5/8 in.
T46	Double Row Ball Bearing
T47	Bearing Spacer
T70	O-ring Replacement Kit
T73	Driven Shaft



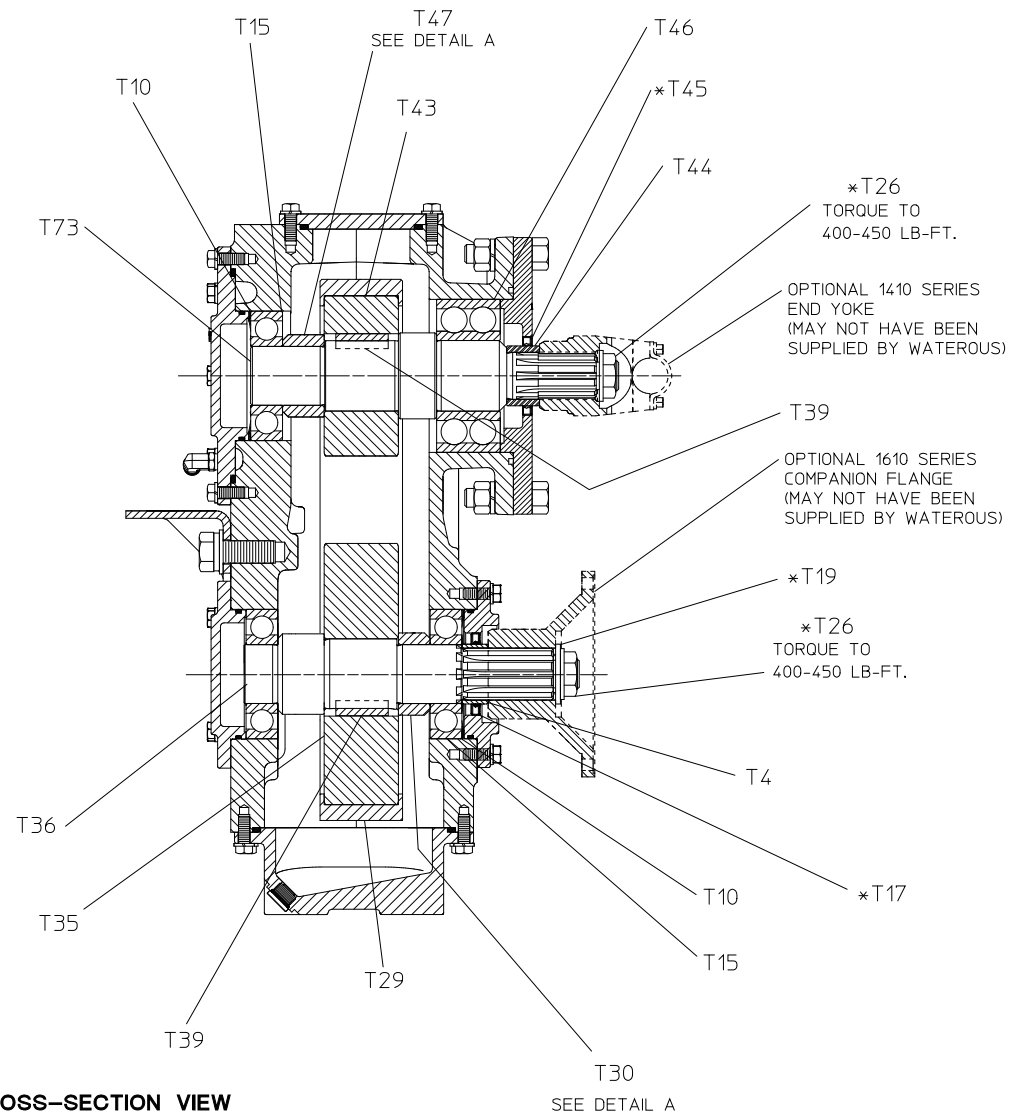
DETAIL A

INSTALL WITH BEVELED  
EDGE TOWARD BEARING

T70

O-RING & SEAL  
REPAIR KIT

\*PART OF T70 GASKET  
AND O-RING REPAIR KIT

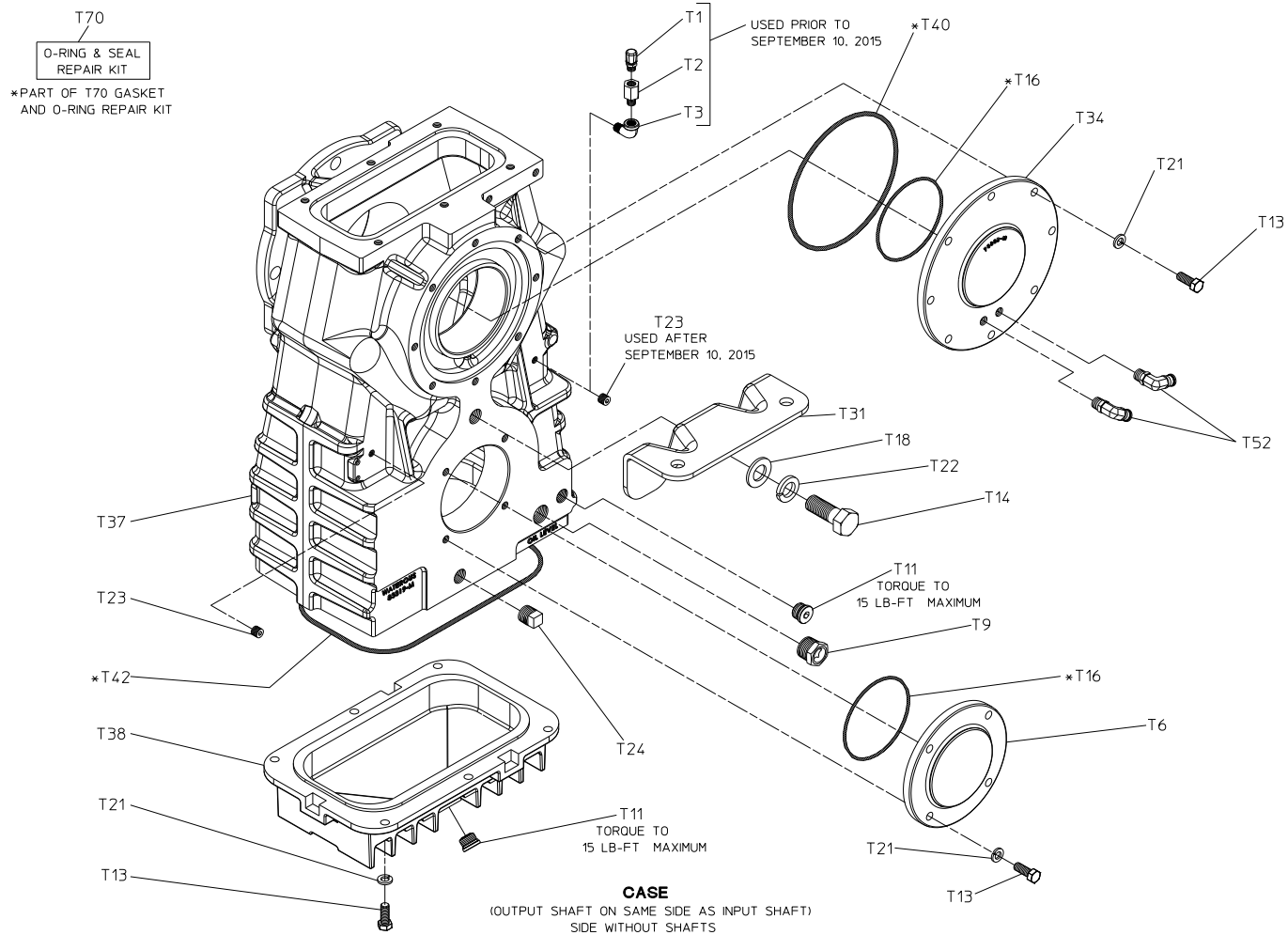


**CROSS-SECTION VIEW**  
(OUTPUT SHAFT ON SAME SIDE  
AS INPUT SHAFT)

**Case**  
**(Output Shaft on Same Side as Input Shaft)**  
**Side without Shafts**

REF NO.	DESCRIPTION
T1	Breather, 1/8 NPT
T2	Snubber, 1/8 NPT
T3	Street Elbow, 1/8 NPT
T6	Bearing Cover
T9	Sight Plug
T11	Socket Head Plug
T13	Hex Head Screw, 3/8-16 x 1 in.
T14	Hex Head Screw, 3/4-10 x 2 in.
T16	O-ring, 4 x 4-1/4 in.
T18	Plain Washer, 3/4 in.
T21	Lock Washer, 3/8 in.
T22	Lock Washer, 3/4 in.

REF NO.	DESCRIPTION
T23	Pipe Plug, 1/8 NPT
T24	Pipe Plug, 1/2 NPT
T31	Case Mounting Bracket
T34	Bearing Cover
T37	Transmission Case
T38	Transmission Pan
T40	O-ring, 6-3/4 x 7-1/8 in.
T42	O-ring, 10 x 10-3/8 in.
T52	Elbow Adapter, 1/4 NPT x 3/8 Tube
T70	O-ring Replacement Kit

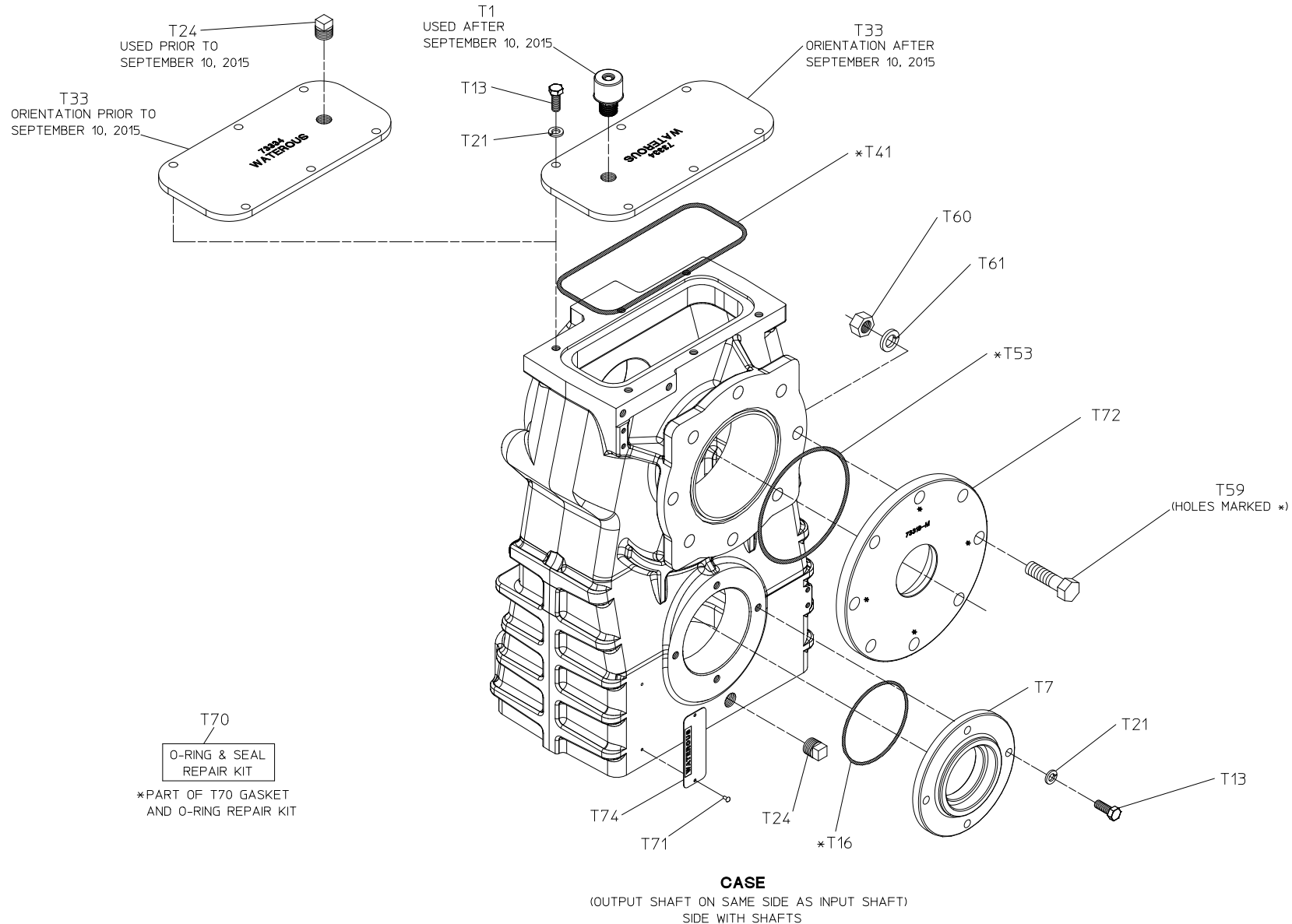


**Case**  
**(Output Shaft on Same Side as Input Shaft)**  
**Side with Shafts**

REF NO.	DESCRIPTION
T1	Breather, 1/2 NPT
T7	Oil Seal Housing
T13	Hex Head Screw, 3/8-16 x 1 in.
T16	O-ring, 4 x 4-1/4 in.
T21	Lock Washer, 3/8 in.
T24	Pipe Plug, 1/2 in.
T33	Case Cover
T41	O-ring, 7-3/4 x 8-1/8 in.

REF NO.	DESCRIPTION
T52	Elbow Adapter, 1/4 NPT x 3/8 Tube
T53	O-ring, 5-5/8 x 5-7/8 in.
T59	Hex Head Screw, 5/8-18 x 2-1/4 in.
T60	Hex Nut, 5/8-18
T61	Lock Washer, 5/8 in.
T70	O-ring Replacement Kit
T71	Drive Screw, #6, 2-1/4 in.
T72	Oil Seal Housing
T74	Serial Plate

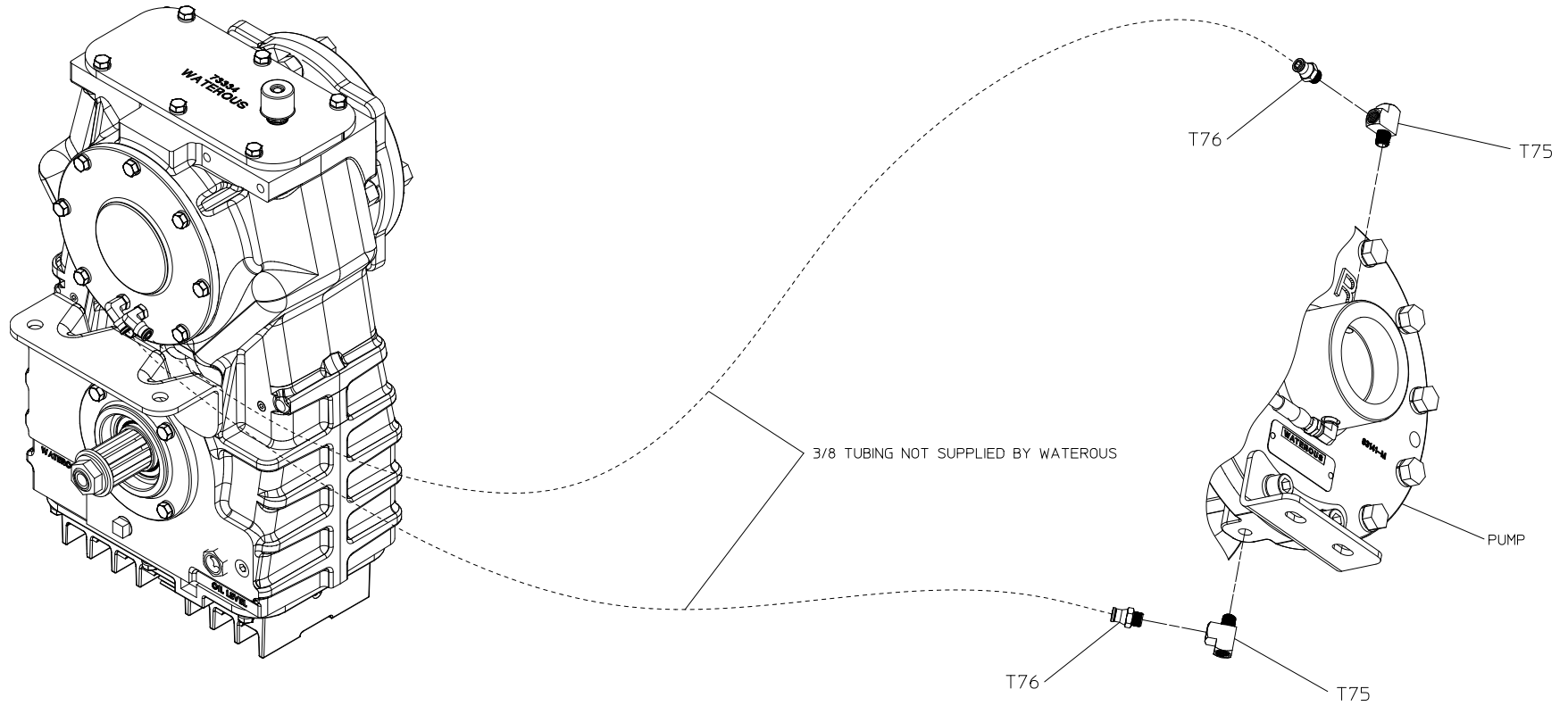




### Optional Cooling Line Fittings

REF NO.	DESCRIPTION
T75	Street Tee, 1/4 NPT

REF NO.	DESCRIPTION
T76	Straight Adapter, 1/4 NPT x 1/4 AB



**OPTIONAL COOLING FITTINGS**  
(MAY NOT HAVE BEEN SUPPLIED BY WATEROUS)