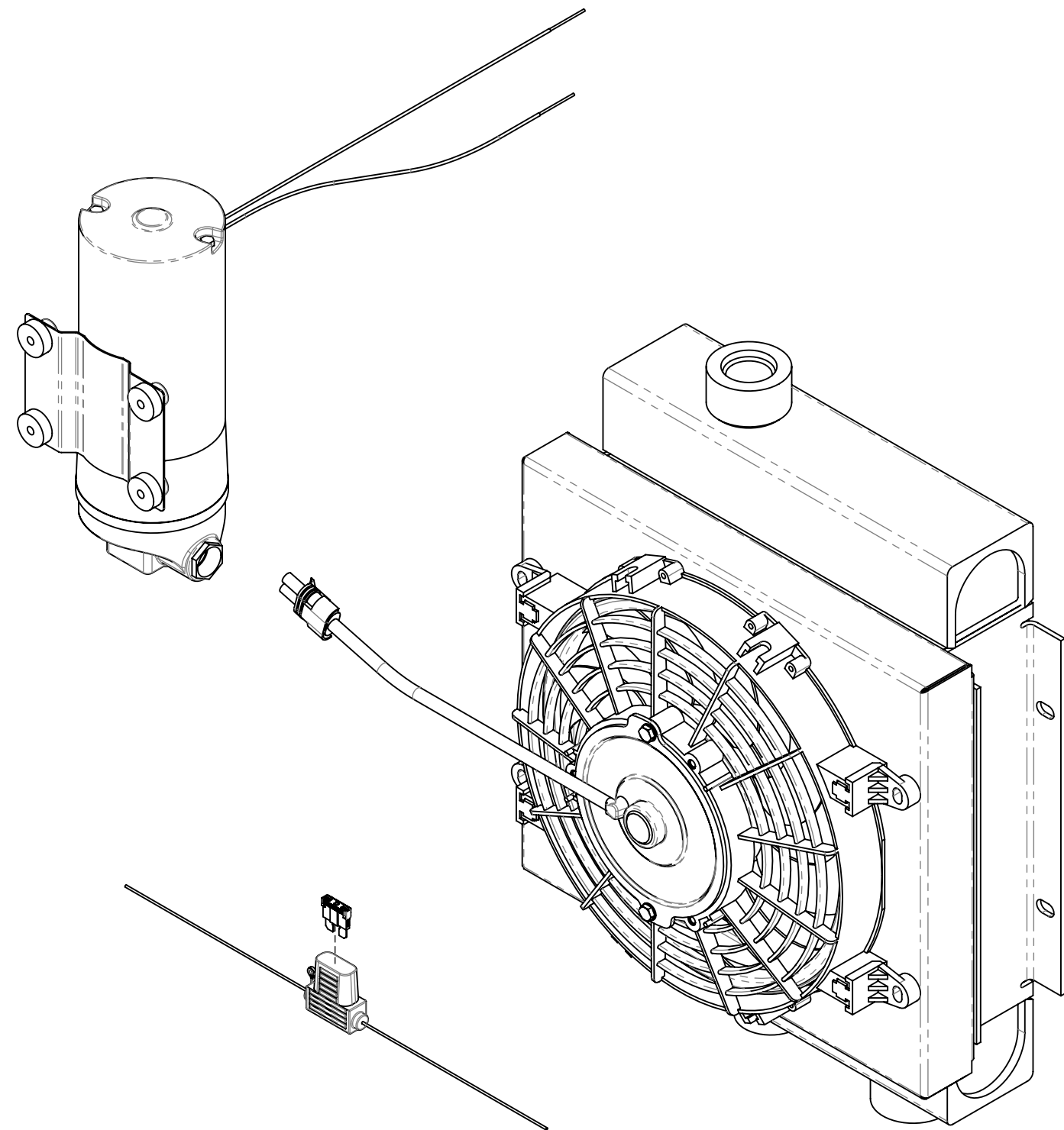
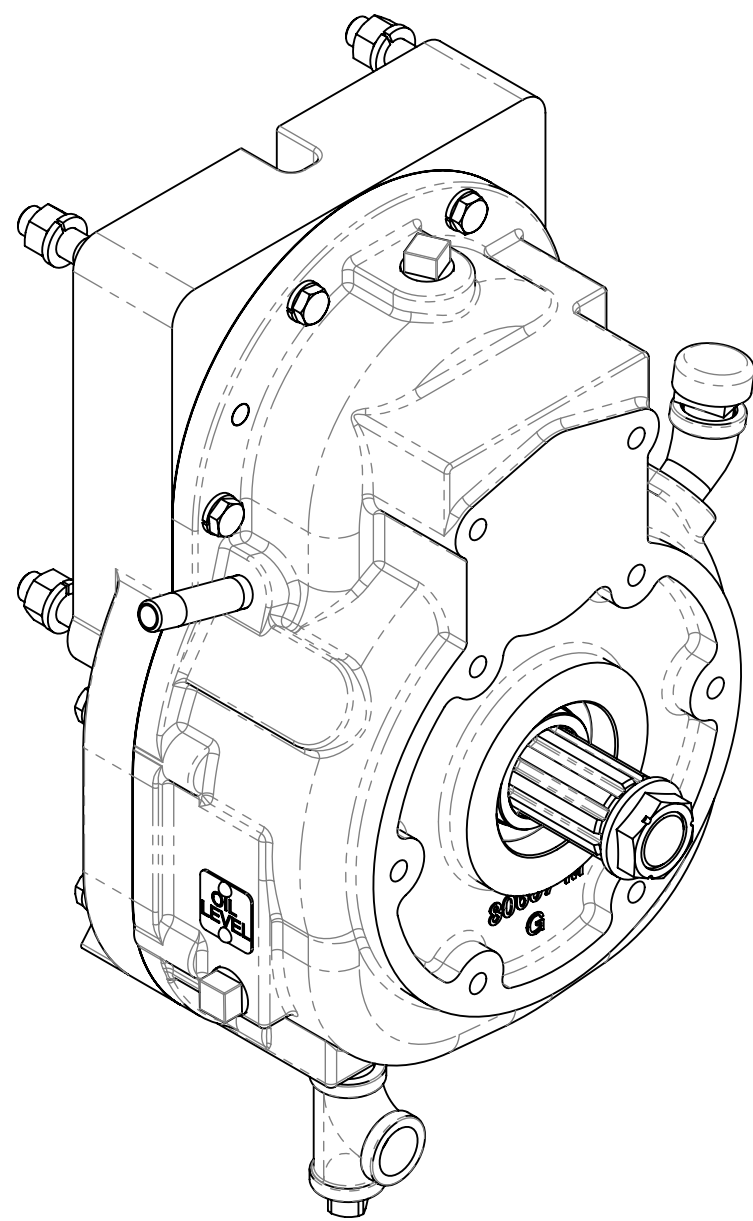
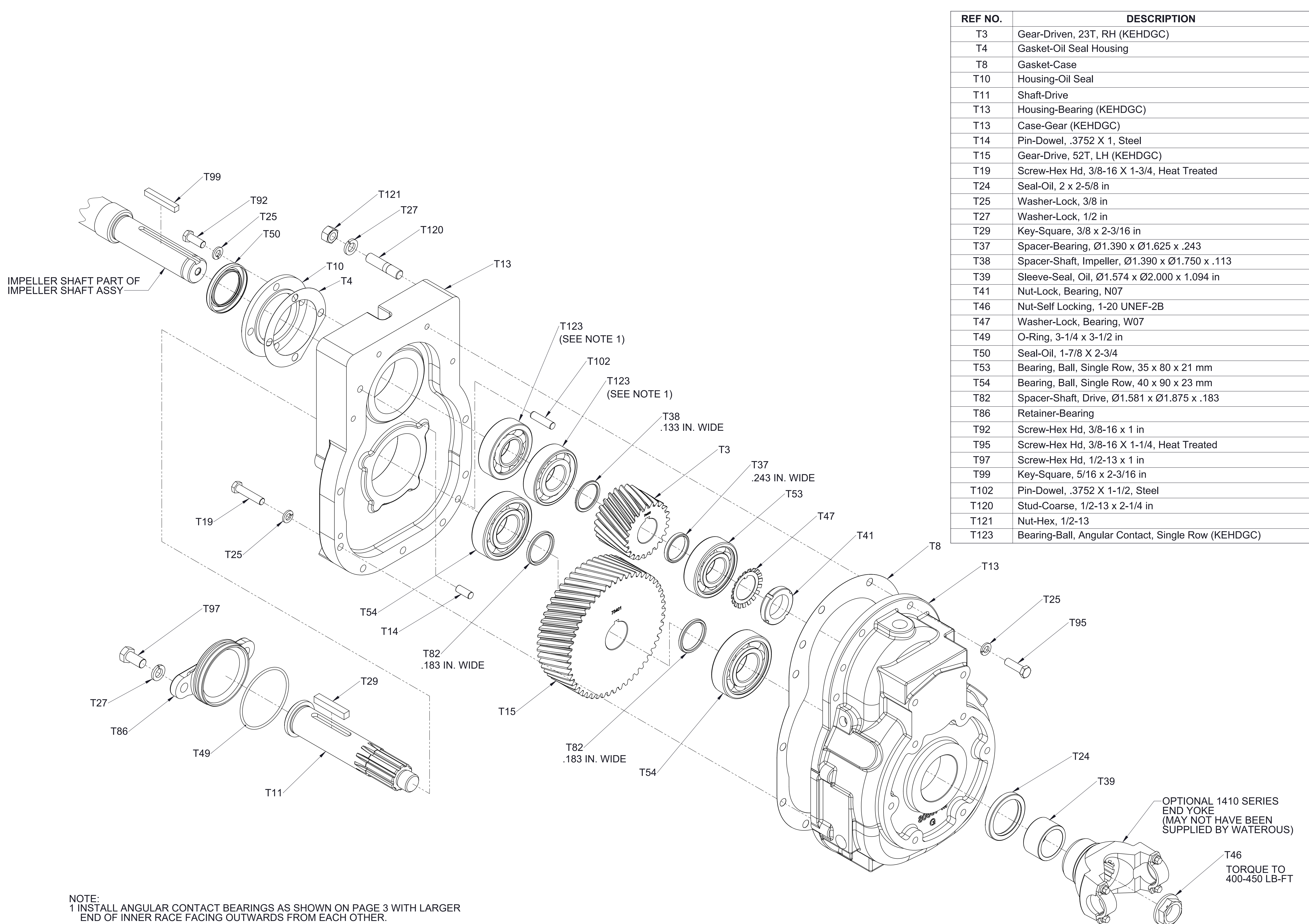


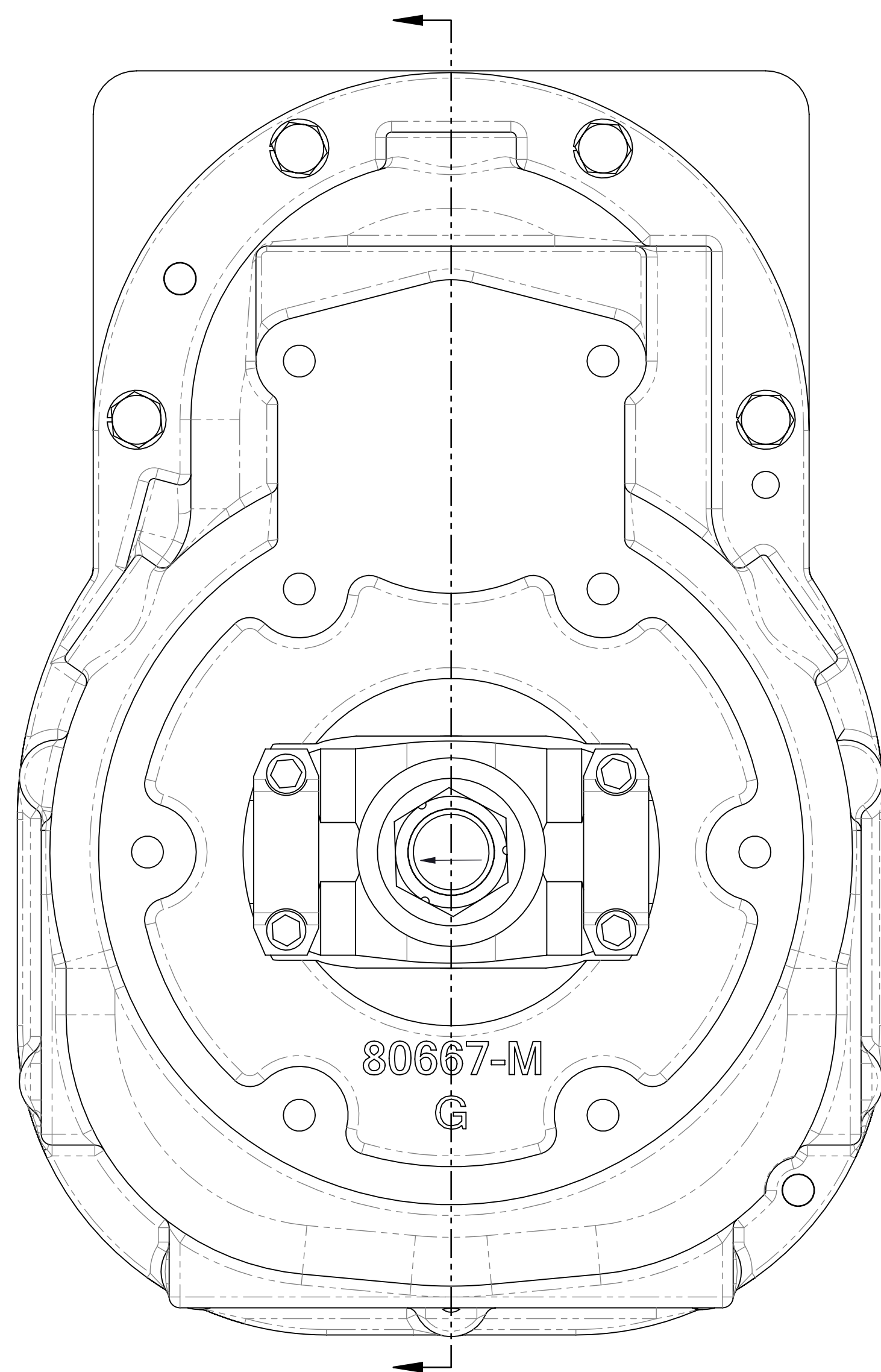
Extra Heavy Duty K Transmission
Service Parts List

Pump Model	Pump impeller Shaft Design	Transmission Input Shaft	Transmission Mounting	See Sheet			
				Exploded View	Cross Section View	Breather, Drain, & Oil Level	Oil Cooler
CP-5	One-Piece (Non-Separable)	CW 1-1/2-10 SAE Spline	INVERTED	2	3	4	5
			HORIZONTAL (RH)				
			VERTICAL				

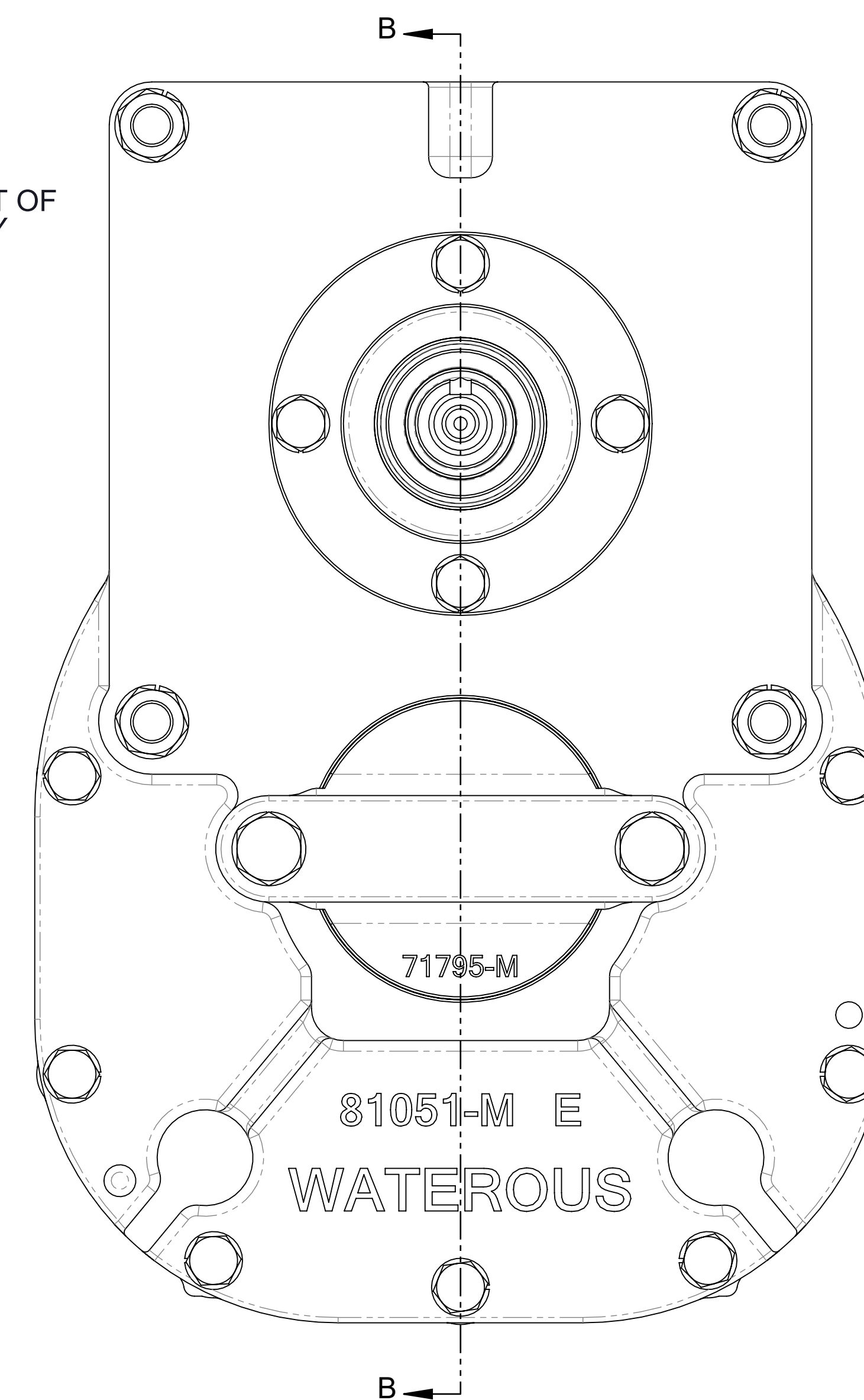
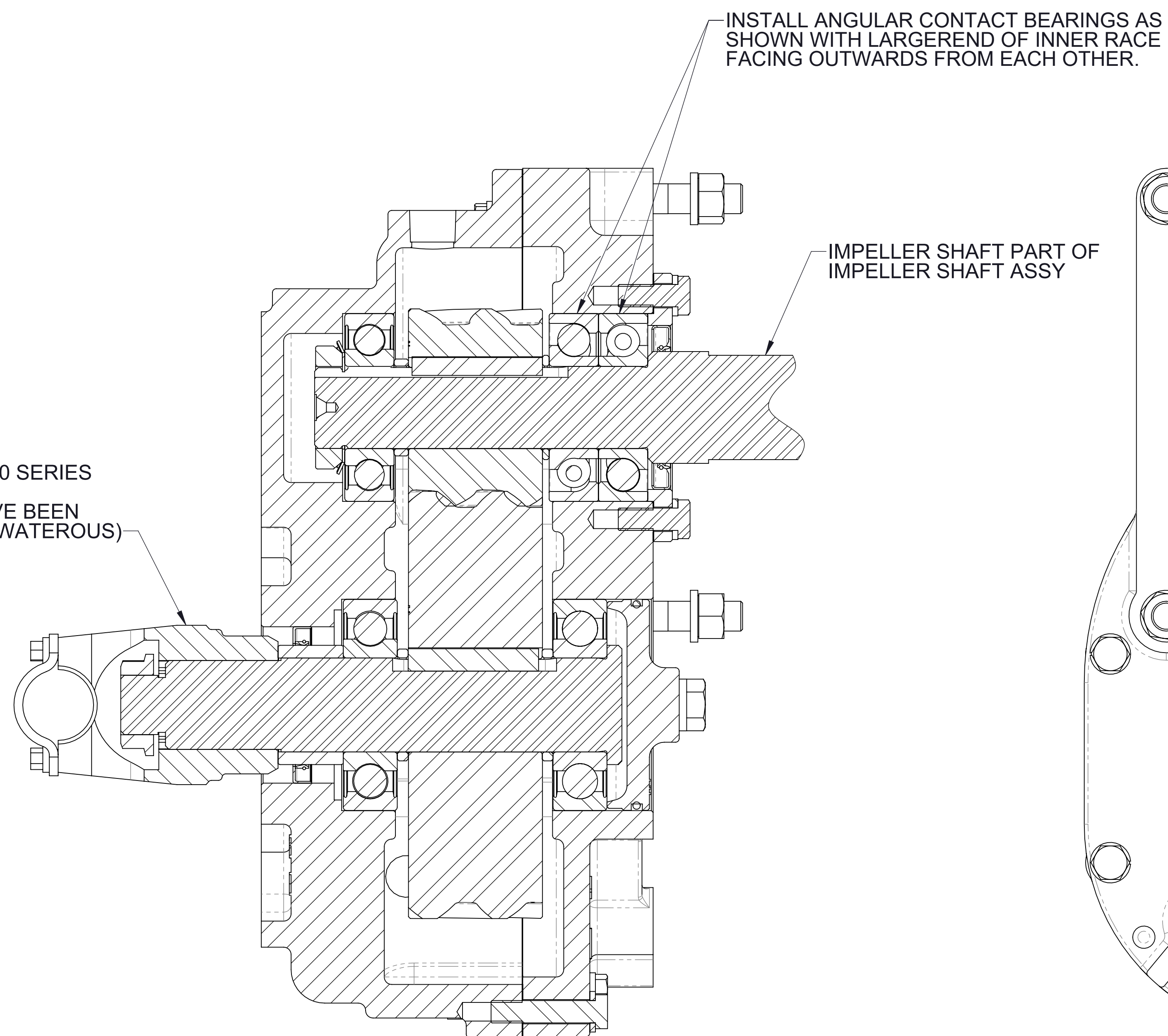




TRANSMISSION ASSEMBLY (EXPLODED VIEW)

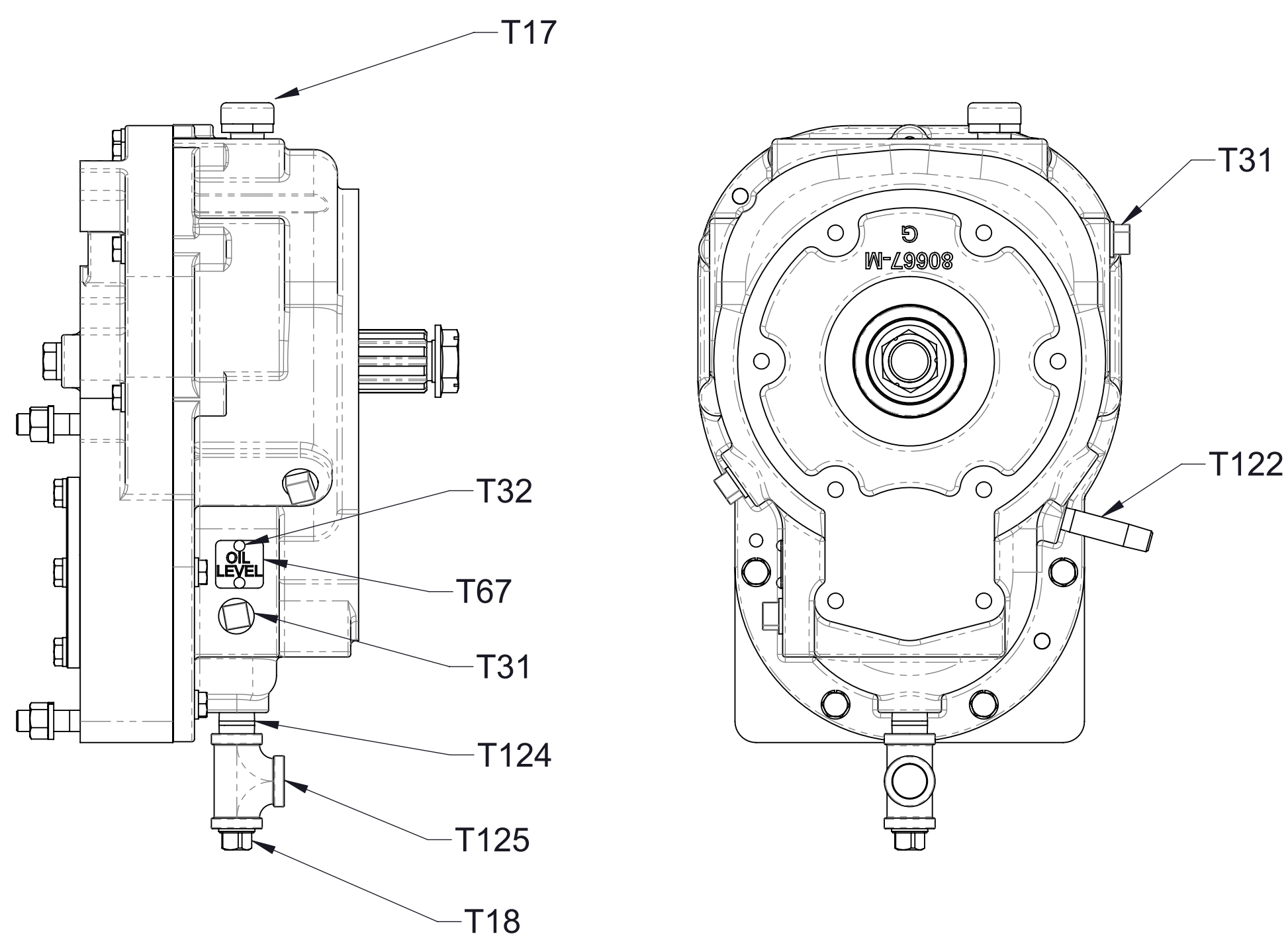


OPTIONAL 1410 SERIES
END YOKE
(MAY NOT HAVE BEEN
SUPPLIED BY WATEROUS)



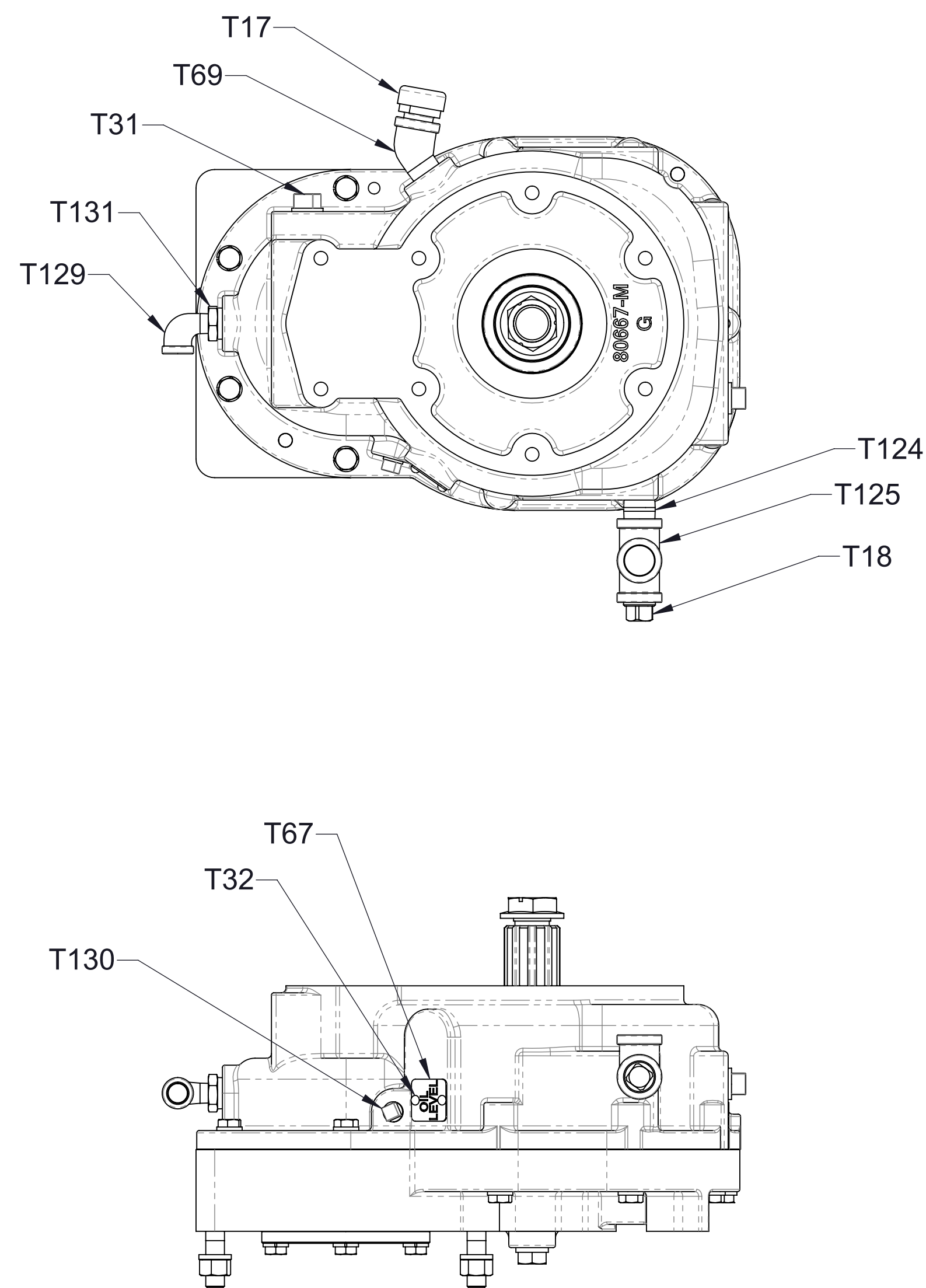
SEE PAGE 2 FOR PART DESCRIPTIONS

TRANSMISSION ASSEMBLY (SECTION VIEW)



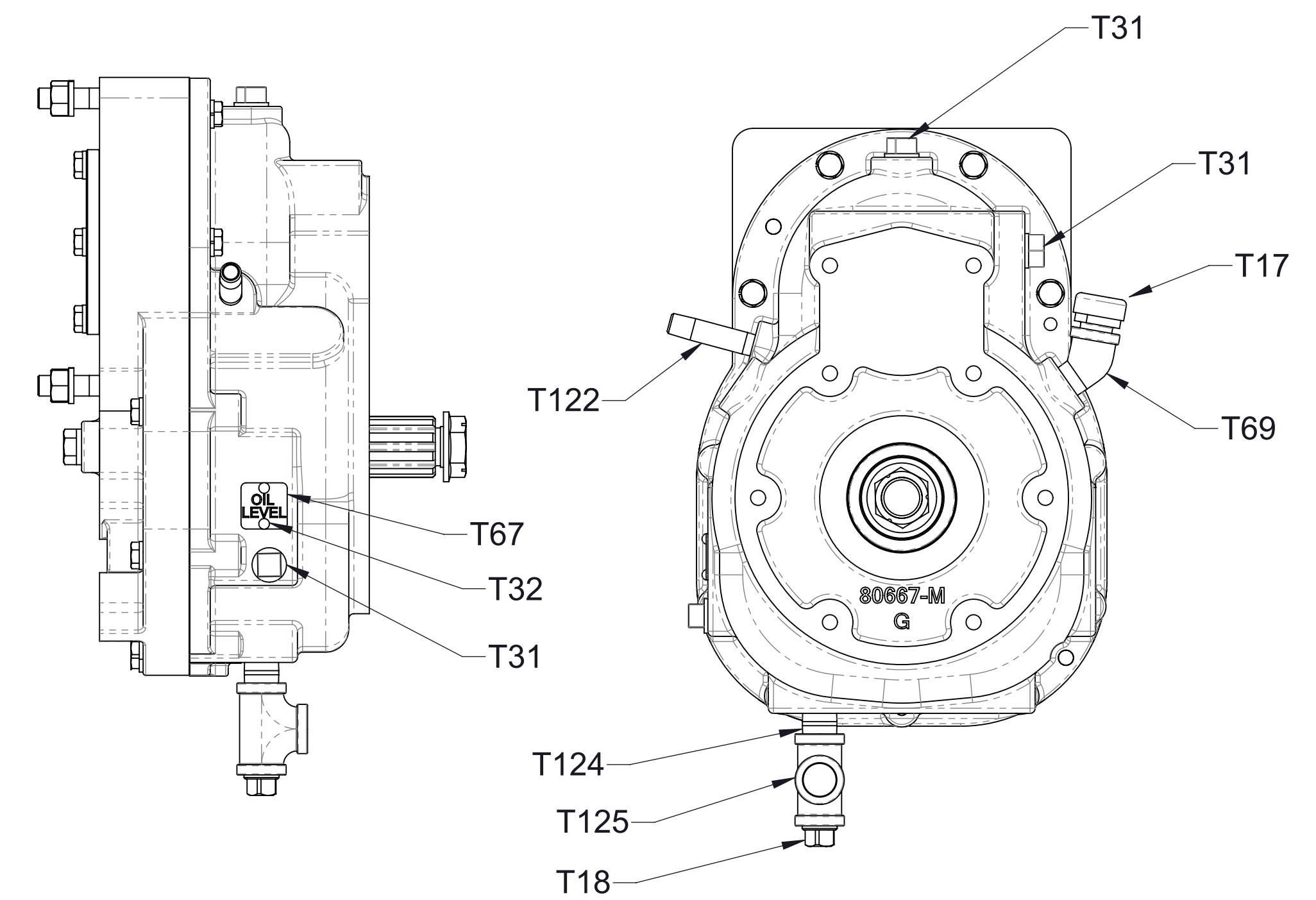
REF NO.	DESCRIPTION
T17	Breather, 1/2 NPT
T18	Plug-Drain, Magnetic, 1/2
T31	Plug-Pipe, Square Hd, 1/2 NPT
T32	Screw-Drive, #6 x 1/4 in
T67	Plate-Oil Level
T122	Nipple-Pipe, 1/4 NPT x 2-1/2 in
T124	Nipple-Pipe, 1/2 NPT x 1-1/2 in
T125	Tee-Standard, Pipe, 1/2 NPT

INVERTED MOUNTING



REF NO.	DESCRIPTION
T17	Breather, 1/2 NPT
T18	Plug-Drain, Magnetic, 1/2
T31	Plug-Pipe, Square Hd, 1/2 NPT
T32	Screw-Drive, #6 x 1/4 in
T67	Plate-Oil Level
T69	Elbow, Street, 45°, 1/2 NPT
T124	Nipple-Pipe, 1/2 NPT x 1-1/2 in
T125	Tee-Standard, Pipe, 1/2 NPT
T129	Elbow-Street, 90°, 1/4 NPT
T130	Plug-Pipe, Square Hd, 1/4 NPT
T131	Bushing-Reducing, Pipe, 1/2 x 1/4 NPT

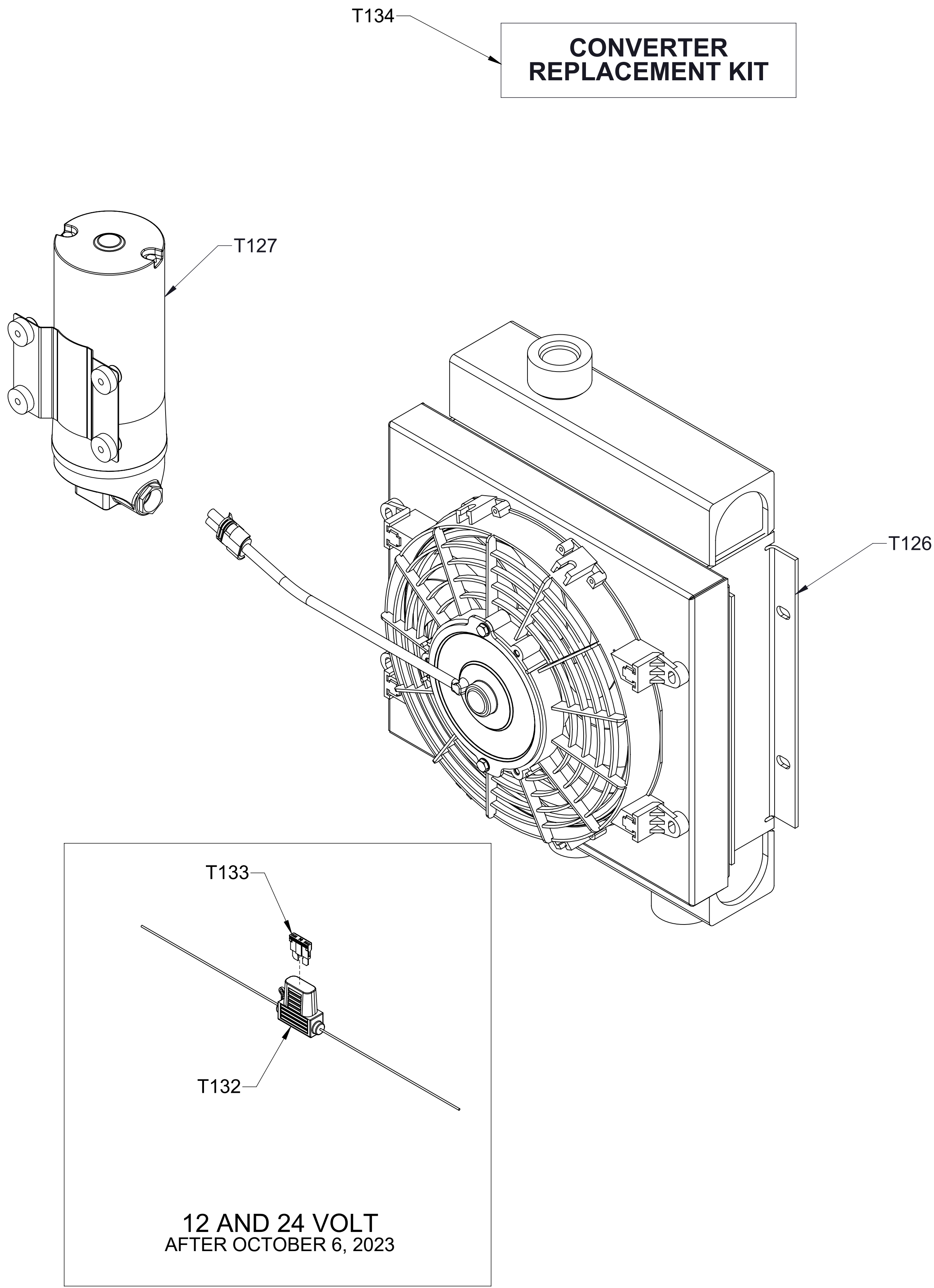
HORIZONTAL (RH) MOUNTING



REF NO.	DESCRIPTION
T17	Breather, 1/2 NPT
T18	Plug-Drain, Magnetic, 1/2
T31	Plug-Pipe, Square Hd, 1/2 NPT
T32	Screw-Drive, #6 x 1/4 in
T67	Plate-Oil Level
T69	Elbow, Street, 45°, 1/2 NPT
T122	Nipple-Pipe, 1/4 NPT x 2-1/2 in
T124	Nipple-Pipe, 1/2 NPT x 1-1/2 in
T125	Tee-Standard, Pipe, 1/2 NPT

VERTICAL MOUNTING

REF NO.	DESCRIPTION
T126	Cooler-Oil
T127	Pump-Cooler
T128	Converter, 24/12 Volt
T132	Holder-Fuse, Inline, 15 Amp
T133	Fuse-ATO, 10 Amp
T134	Converter Replacement Kit



NOTE:
OIL PUMP AND COOLER TO BE MOUNTED IN A POSITION
WHERE THE OIL WITHIN THEM IS NOT ANY HIGHER THAN THE
OIL LEVEL OF THE GEAR CASE. OIL COOLER ORIENTATION
MUST BE AS DEPICTED FOR PROPER COOLING.

EXTERNAL OIL COOLER

