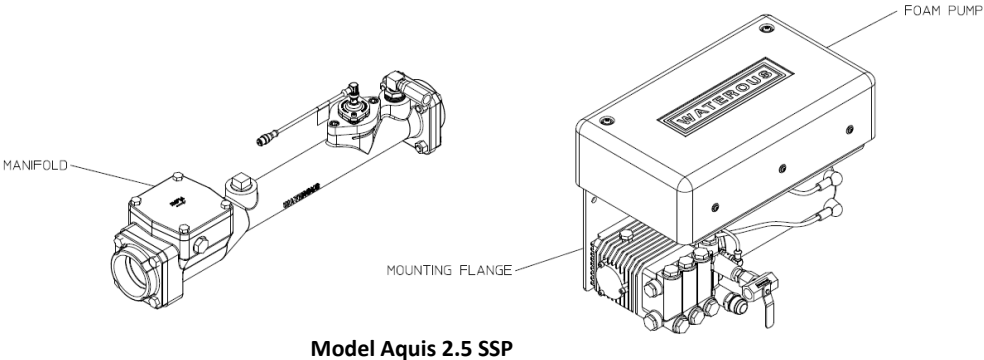
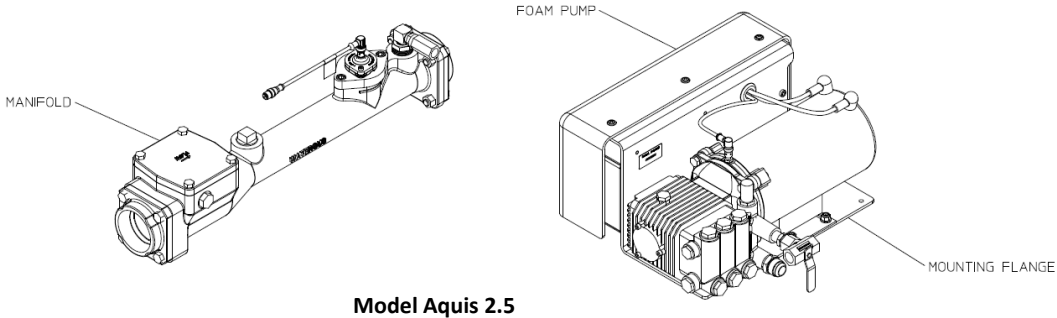


## Aquis™ 2.5 Foam Pump Service Parts List Models: Aquis 2.5, Aquis 2.5 SSP

Index:

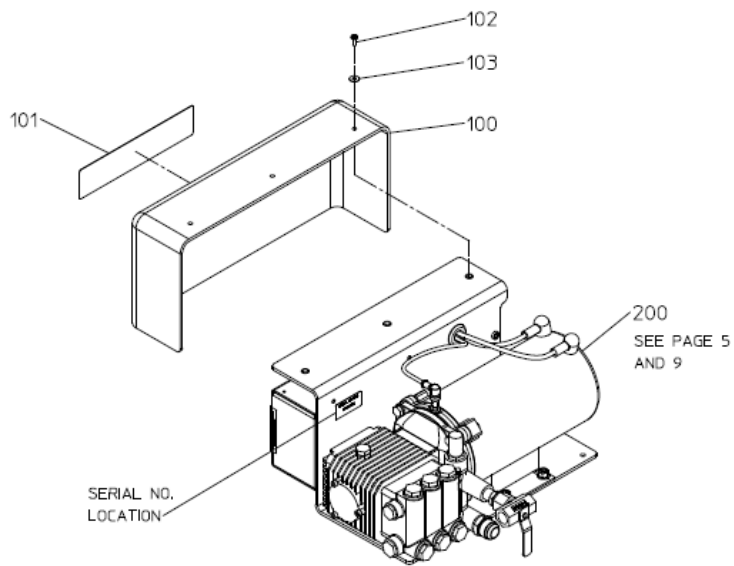
Component		See Pages
Foam Pump	Complete Unit	2, 3
	Pump and Motor	Model Aquis 2.5 Model Aquis 2.5 SSP
	Bracket and Control Module	8, 9
	Control Box Wiring	10, 11
Foam Manifold	2.5 in. Size	Integral Check Valve Separate Check Valve
	3.0 in. Size	16, 17
	Slide-In Units	18, 19
	Panel Components	
Foam Tank		22, 23
Foam Supply and Inject/By-Pass Hose Kits		See Service Parts List SPL 83430



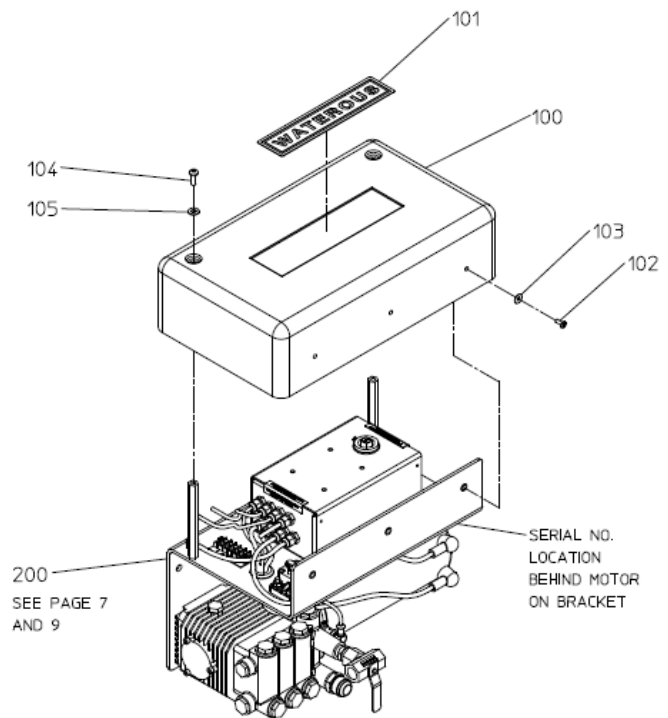
## Foam Pump – Complete Unit

REF NO.	DESCRIPTION
100	Foam Pump Cover
101	Cover Label
102	Pan Head Screw, No. 10-32 x $\frac{3}{4}$ in.
103	Plain Washer, No. 10

REF NO.	DESCRIPTION
104	Pan Hd Screw, $\frac{1}{4}$ -20 x $\frac{3}{4}$
105	Plain Washer, $\frac{1}{4}$
200	Foam Pump Ass'y (Includes 201 thru 277)



MODEL: AQUIS 2.5



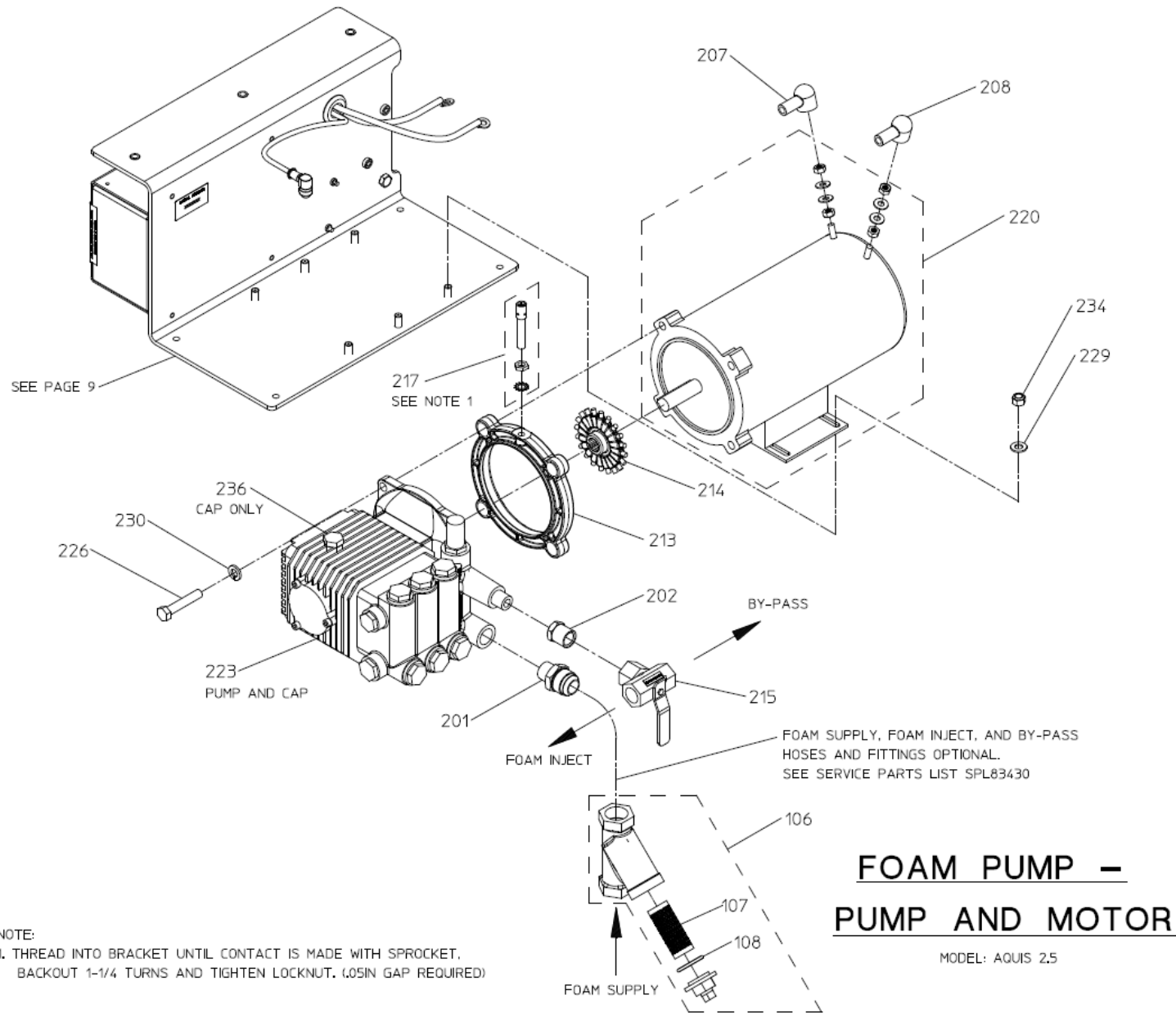
MODEL: AQUIS 2.5 SSP

## FOAM PUMP – COMPLETE UNIT

**Foam Pump – Pump and Motor**  
**Model: Aquis 2.5**

REF NO.	DESCRIPTION
106	Wye Strainer, 3/4 in. (Includes 107 and 108)
107	Strainer Screen
108	Strainer Gasket
201	Straight Adapter, 12 MJIC x ½ MNPT
202	Reducing Bushing, 3/8 MNPT x ½ FNPT
207	Black Boot
208	Red Boot
213	Pump Spacer
214	Sensor Wheel
215	3 Way Ball Valve
217	Product Sensor

REF NO.	DESCRIPTION
220	Electric Motor
223	Foam Pump (Includes 236)
226	Hex Head Screw, 3/8-16 x 2 in.
229	Plain Washer, 5/16 in.
230	Lock Washer, 3/8 in.
234	Nylok Hex Nut, 5/16-18
236	Oil Fill Cap, Dip Stick

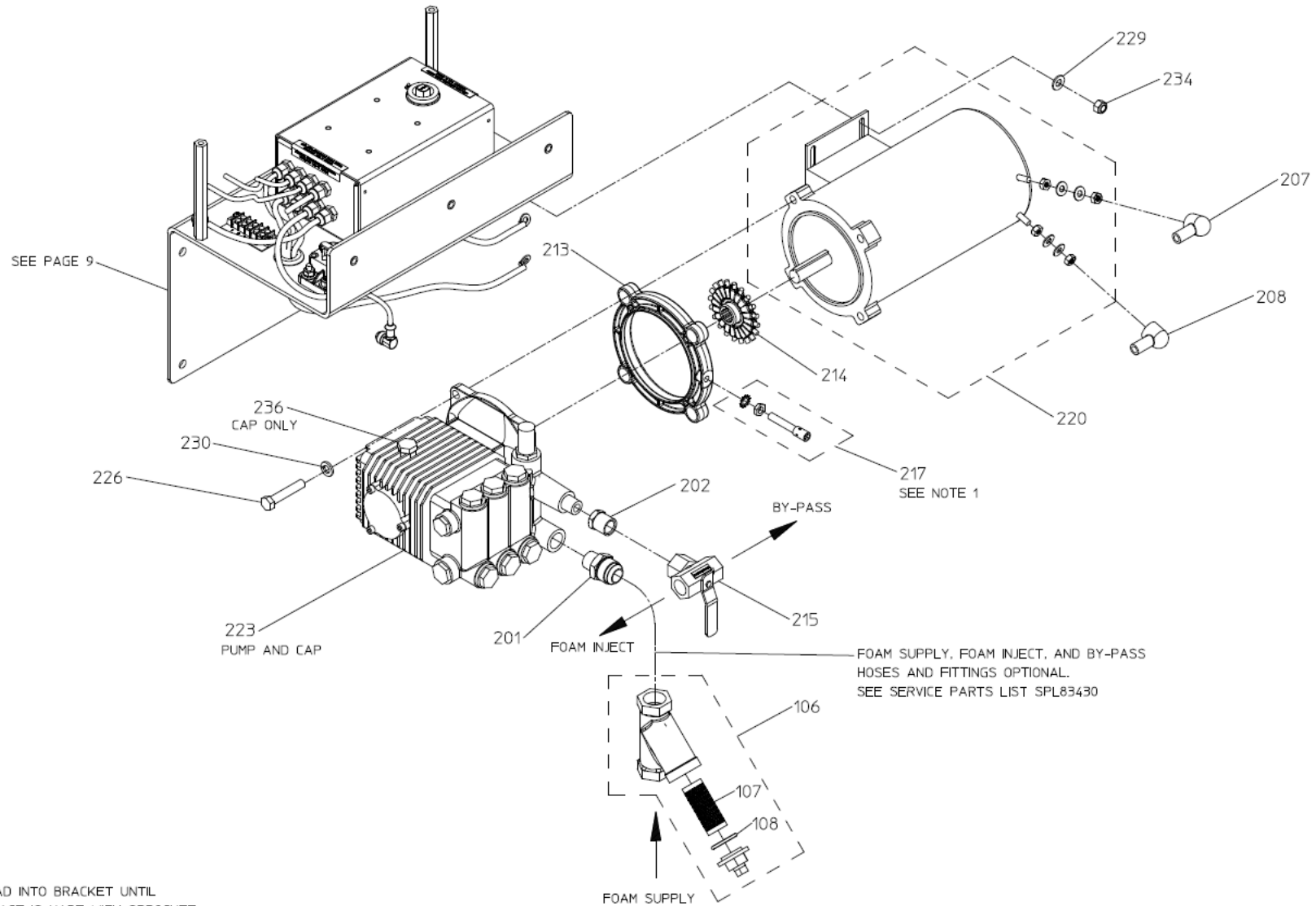


NOTE:  
1. THREAD INTO BRACKET UNTIL CONTACT IS MADE WITH SPROCKET.  
BACKOUT 1-1/4 TURNS AND TIGHTEN LOCKNUT. (.05IN GAP REQUIRED)

**Foam Pump – Pump and Motor**  
**Model: Aquis 2.5 SSP**

REF NO.	DESCRIPTION
106	Wye Strainer, 3/4 in. (Includes 107 and 108)
107	Strainer Screen
108	Strainer Gasket
201	Straight Adapter, 12 MJIC x ½ MNPT
202	Reducing Bushing, 3/8 MNPT x ½ FNPT
207	Black Boot
208	Red Boot
213	Pump Spacer
214	Sensor Wheel
215	3 Way Ball Valve
217	Product Sensor

REF NO.	DESCRIPTION
220	Electric Motor
223	Foam Pump (Includes 236)
226	Hex Head Screw, 3/8-16 x 2 in.
229	Plain Washer, 5/16 in.
230	Lock Washer, 3/8 in.
234	Nylok Hex Nut, 5/16-18
236	Oil Fill Cap, Dip Stick



NOTE:  
 1. THREAD INTO BRACKET UNTIL  
 CONTACT IS MADE WITH SPROCKET.  
 BACKOUT 1-1/4 TURNS AND TIGHTEN  
 LOCKNUT. (.05IN GAP REQUIRED)

## FOAM PUMP – PUMP AND MOTOR

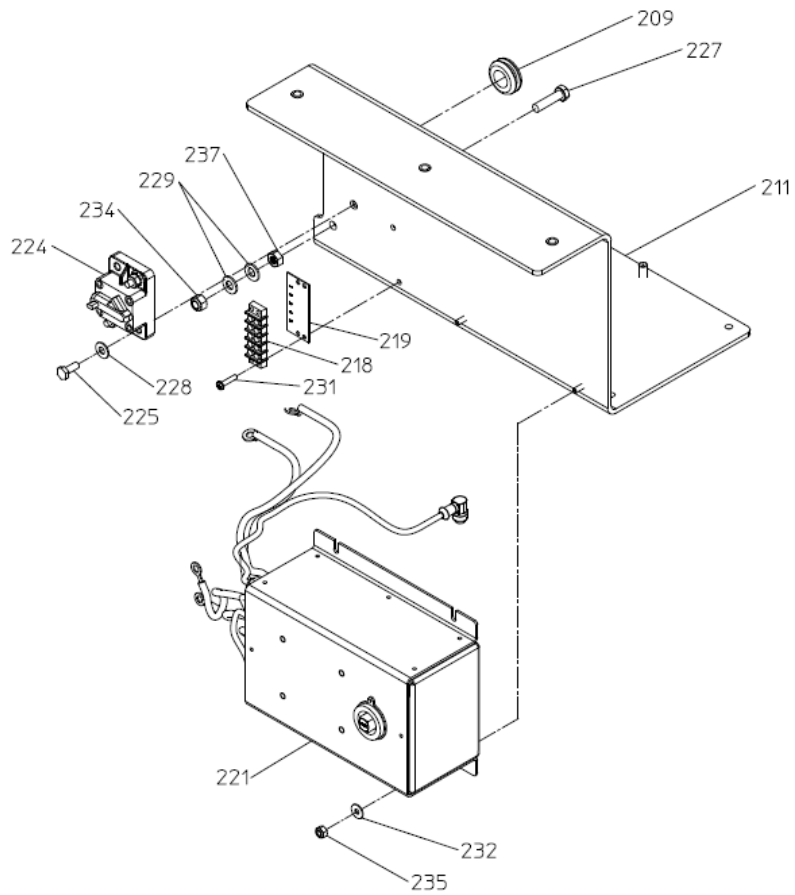
MODEL: AQUIS 2.5 SSP

## Foam Pump – Bracket and Control Module

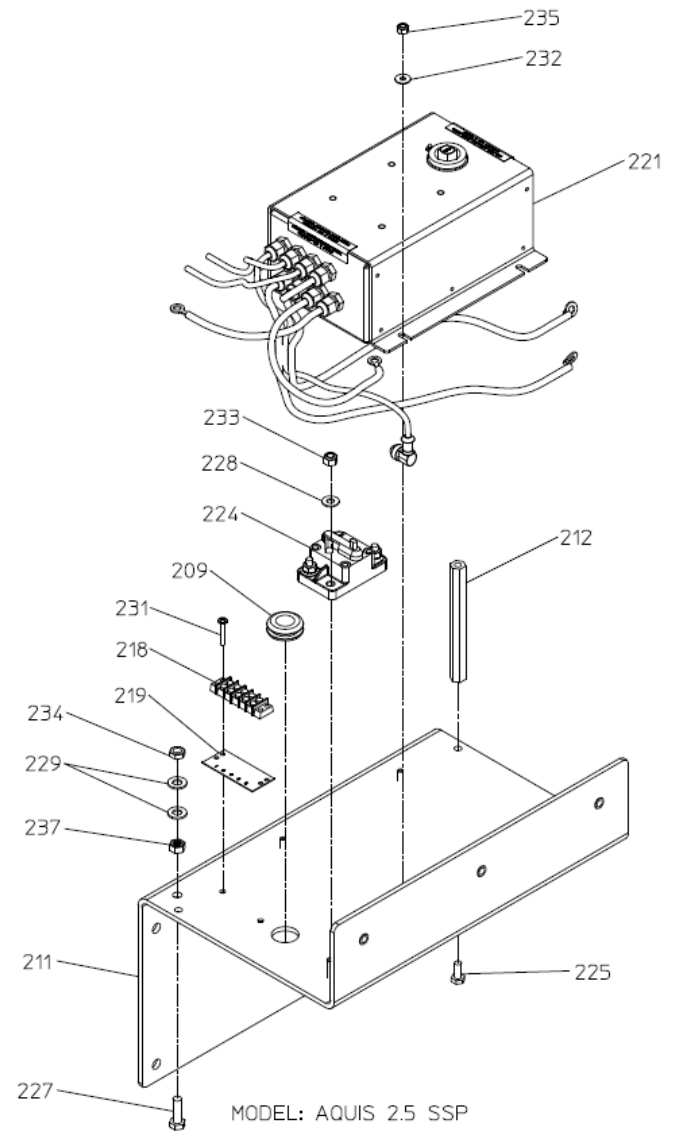
REF NO.	DESCRIPTION
209	Grommet
211	Z Bracket
212	Standoff, ¼-20 x 5 in.
218	Terminal Block, 5 Position
219	Number Strip
221	Control Box
224	Circuit Breaker
225	Hex Head Screw, ¼-20 x 5/8 in.
225	Hex Head Screw, ¼-20 x ¾ in.
227	Hex Head Screw, 5/16-18 x 1-1/4 in.

REF NO.	DESCRIPTION
228	Plain Washer, ¼ in.
229	Plain Washer, 5/16 in.
231	Screw-Pan Head, No. 8-32 x ¾ in.
232	Plain Washer, No. 10
233	Nylok Hex Nut, ¼-20
234	Nylok Hex Nut, 5/16-18
235	Nylok Hex Nut, 10-32
237	Hex Nut, 5/16-18





MODEL: AQUIS 2.5



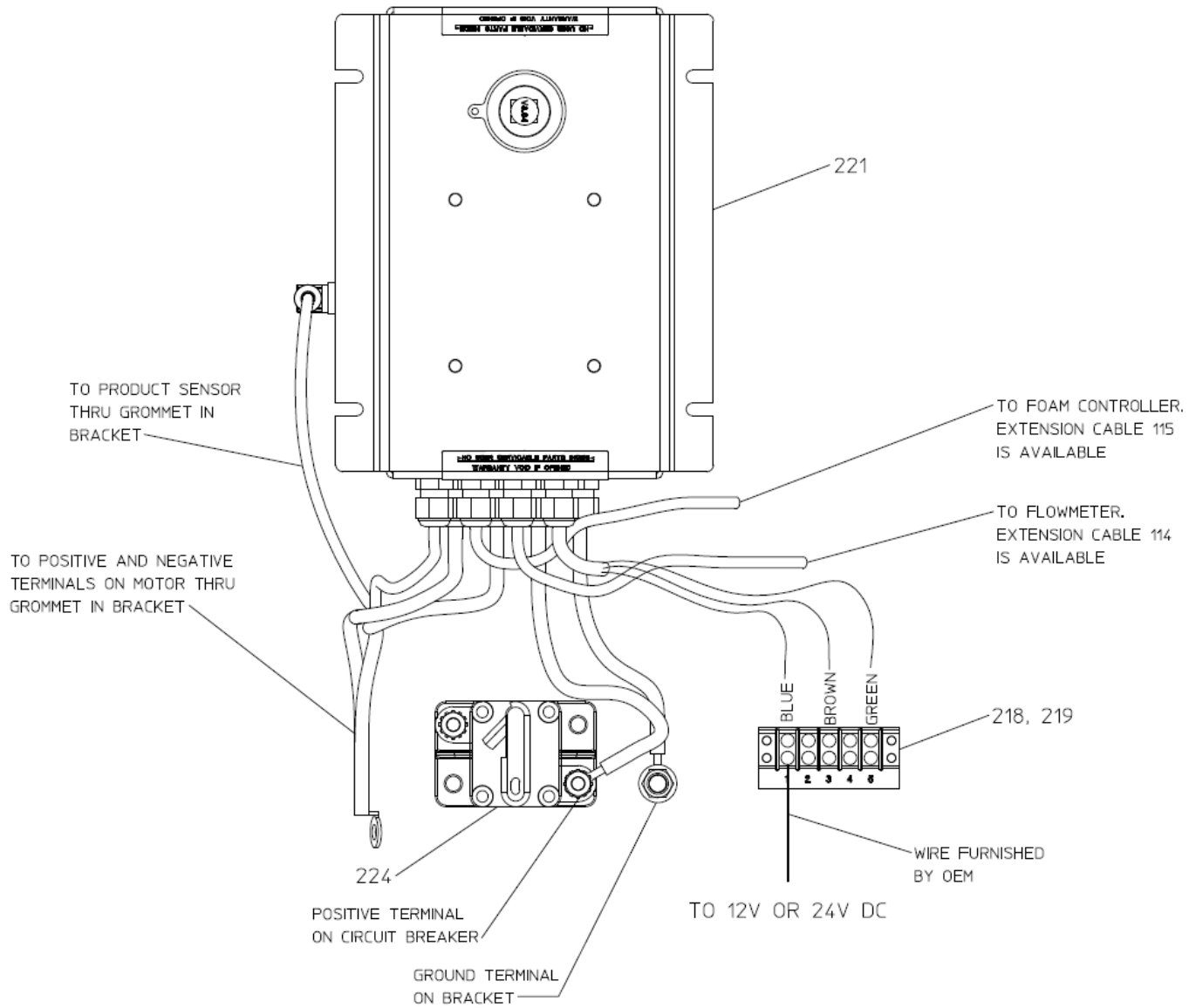
MODEL: AQUIS 2.5 SSP

## FOAM PUMP – BRACKET & CONTROL MODULE

### Foam Pump – Control Box Wiring

REF NO.	DESCRIPTION
218	Terminal Block, 5 Position
219	Number Strip

REF NO.	DESCRIPTION
221	Control Box
224	Circuit Breaker

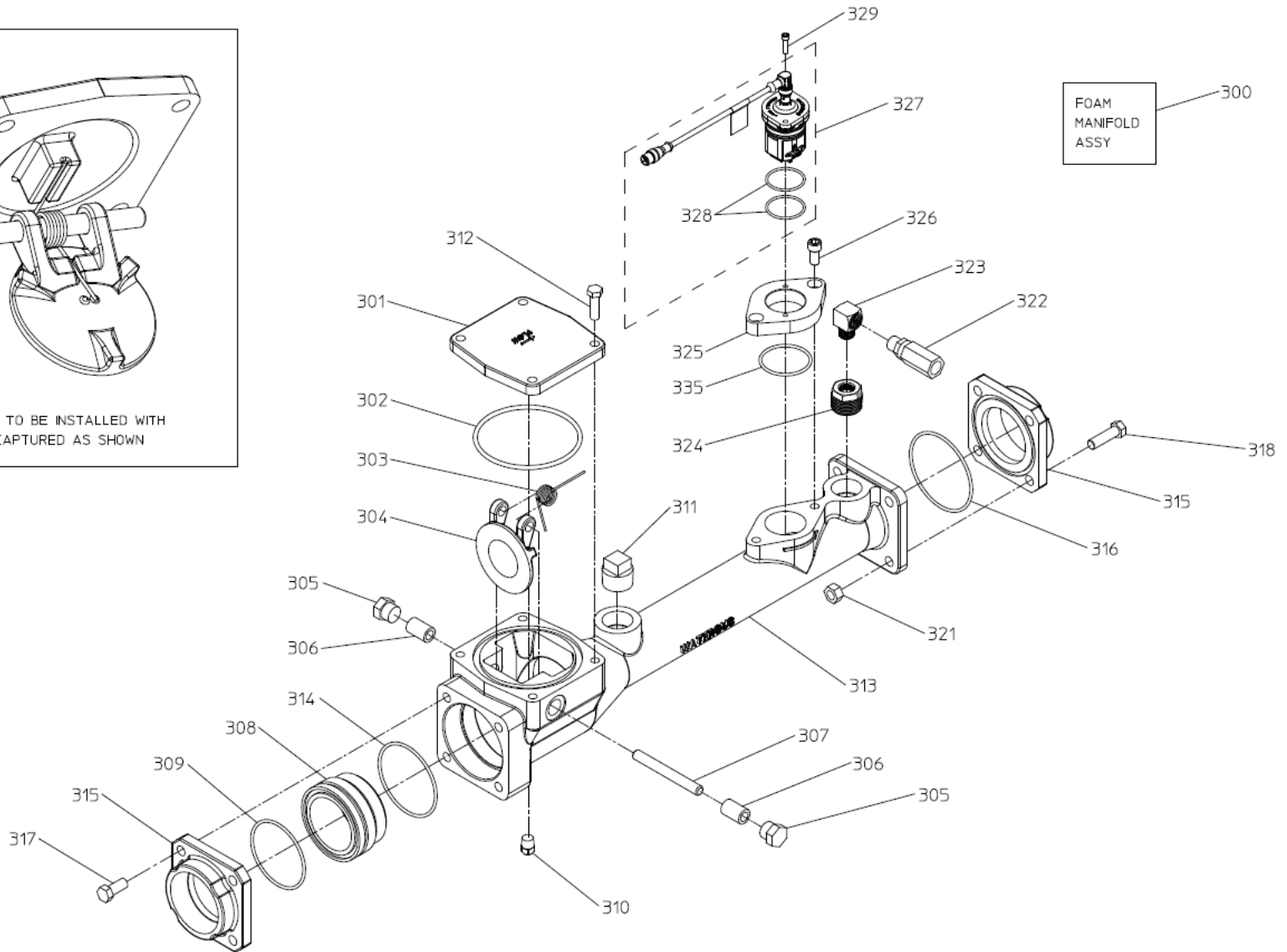
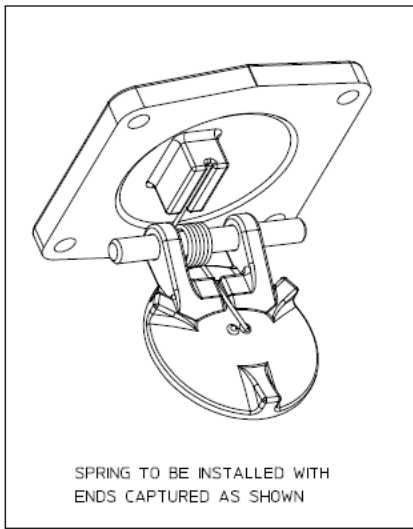


## FOAM PUMP – CONTROL BOX WIRING

**Foam Manifold – 2.5 in. Size  
Integral Check Valve**

REF NO.	DESCRIPTION
300	Manifold Assembly (Includes 301 thru 335)
301	Cover-Valve
302	O-ring, 4-1/4 x 4-5/8 in.
303	Torsion Spring
304	Valve Disc
305	Hex Head Plug
306	Shaft Spacer
307	Hinge Pin
308	Valve Seat
309	O-ring, 3 x 3-1/4 in.
310	Square Head Pipe Plug, 1/4 in. NPT
311	Square Head Pipe Plug, 1 in. NPT
312	Hex Head Screw, 3/8-16 x 1-1/4 in.
313	Pipe-Flowmeter
314	O-ring, 3-1/4 x 3-1/2 in.

REF NO.	DESCRIPTION
315	Tapped Flange, 4-Bolt, 2-1/2 in. NPT
316	O-ring, 3-1/2 x 3-3/4 in.
317	Hex Head Screw, 7/16-14 x 1 in.
318	Hex Head Screw, 7/16-20 x 1-1/2 in.
321	Hex Nut, 7/16-20
322	Check Valve, 3/8 in. NPT
323	Street Elbow, 90 Deg., 3/8 in. NPT
324	Reducing Bushing, 1 in. NPT x 3/8 in. NPT
325	Flowmeter Adapter
326	Screw-Socket Head, 3/8-16 x 3/4 in.
327	Flowmeter (Includes 328)
328	O-ring, 1-1/2 x 1-11/16 in.
329	Pan Head Screw, No. 10-32 x 3/4 in.
335	O-ring, 2 x 2-1/4 in.

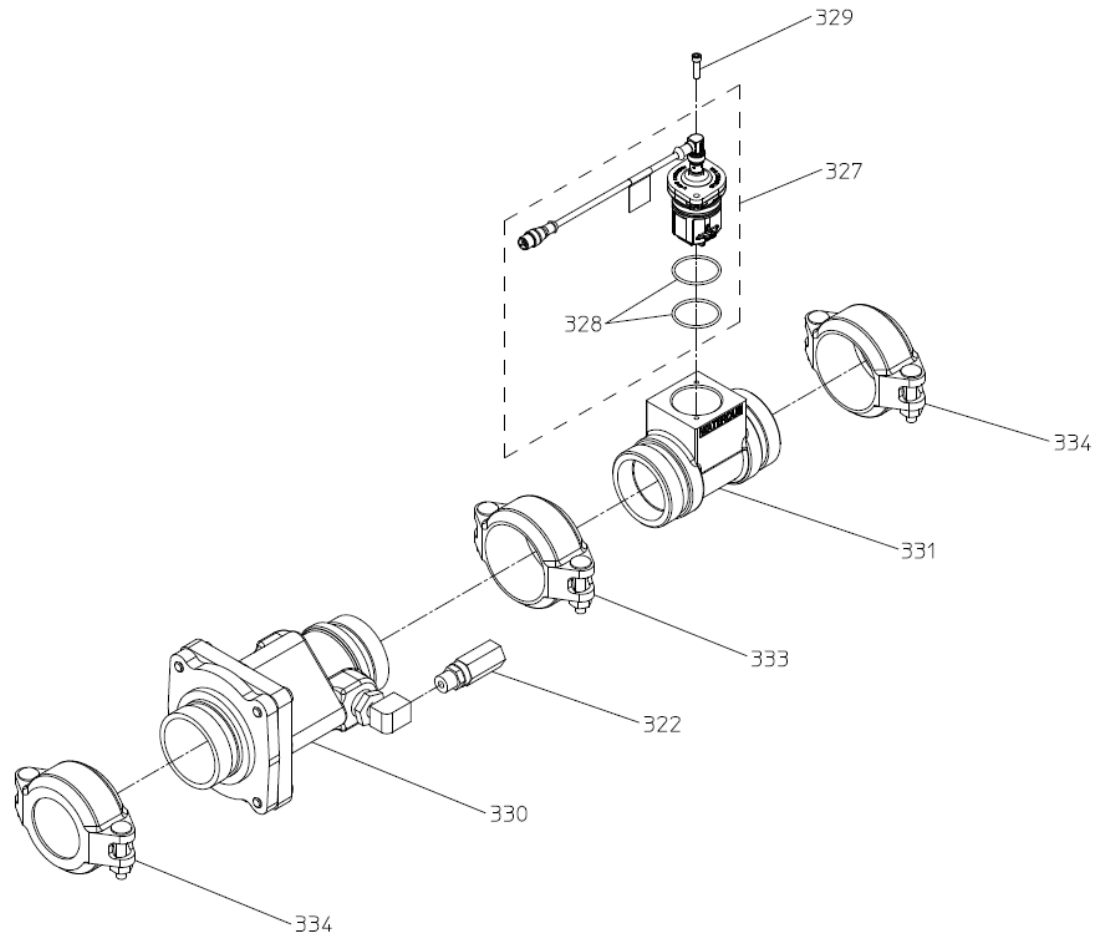


**FOAM MANIFOLD – 2.5 IN. (INTEGRAL CHECK VALVE)**

**Foam Manifold – 2.5 in. Size  
Separate Check Valve**

<b>REF NO.</b>	<b>DESCRIPTION</b>
322	Check Valve, 3/8 in. NPT
327	Flowmeter (Includes 328)
328	O-ring, 1-1/2 x 1-11/16 in.
329	Pan Head Screw, No. 10-32 x 3/4 in.

<b>REF NO.</b>	<b>DESCRIPTION</b>
330	Master Waterway Check Valve
331	Flowmeter Tee, FNPT x Victaulic
333	Victaulic Clamp, 2-1/2 in.
334	Victaulic Reducing Clamp, 2-1/2 x 2 in.



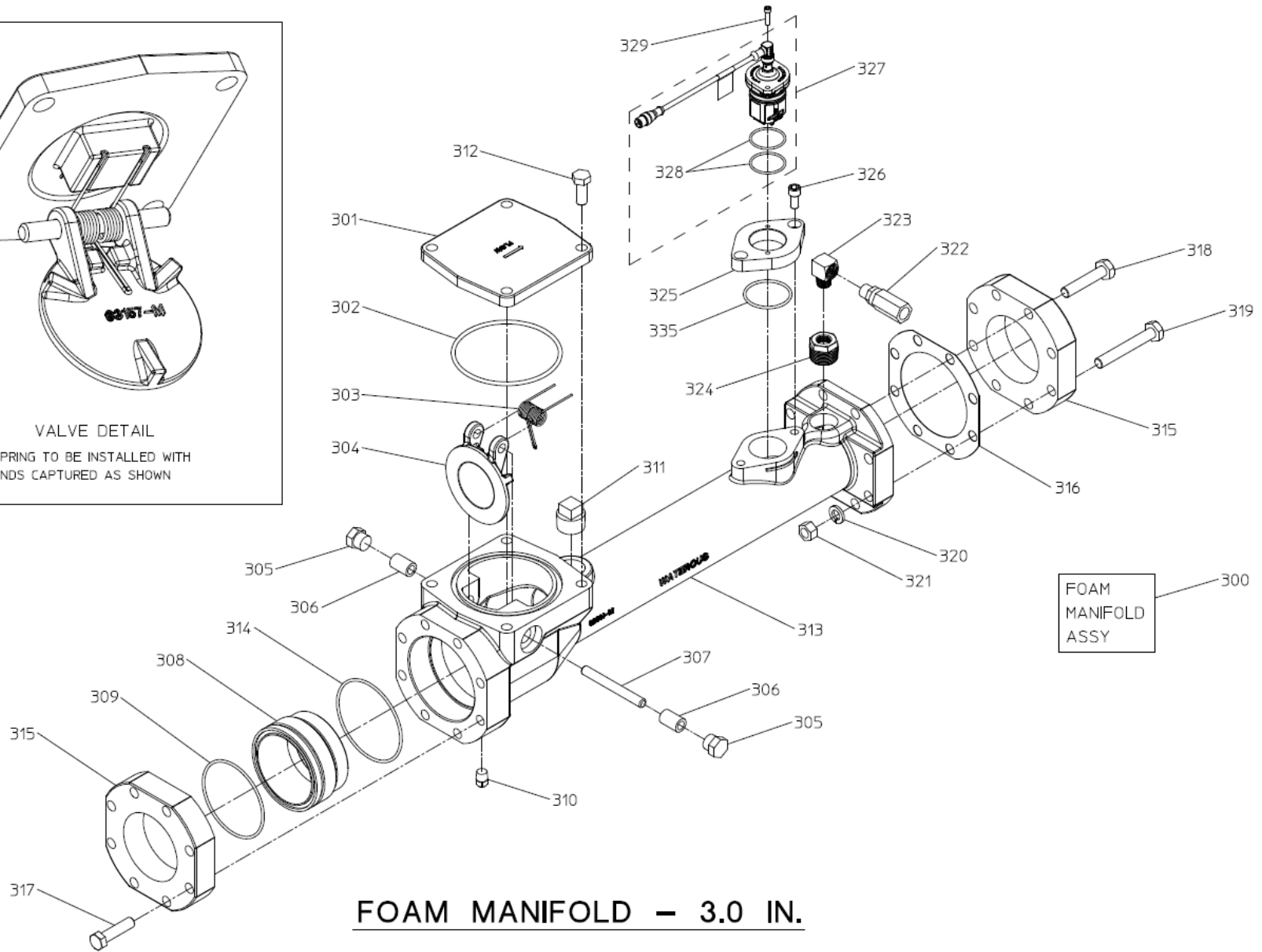
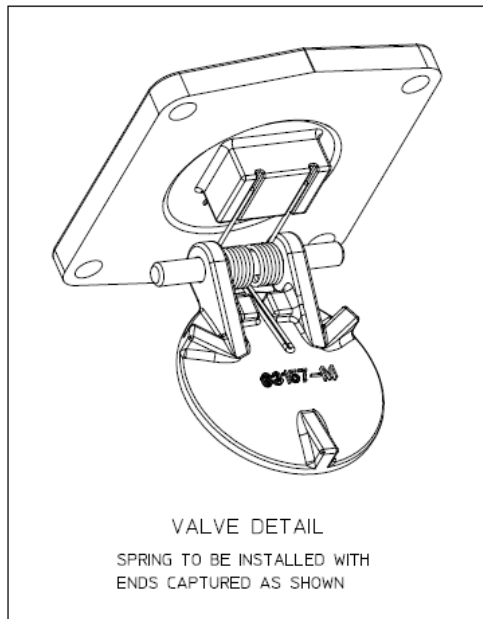
FOAM MANIFOLD – 2.5 IN. (SEPARATE CHECK VALVE)

### Foam Manifold – 3.0 in. Size

REF NO.	DESCRIPTION
300	Manifold Assembly (Includes 301 thru 335)
301	Cover-Valve
302	O-ring, 4-3/4 x 5-1/8 in.
303	Torsion Spring
304	Valve Disc
305	Hex Head Plug
306	Shaft Spacer
307	Hinge Pin
308	Valve Seat
309	O-ring, -3/4 x 4 in.
310	Square Head Pipe Plug, ¼ in. NPT
311	Square Head Pipe Plug, 1 in. NPT
312	Hex Head Screw, ½-13 x 1-1/4 in.
313	Pipe-Flowmeter
314	O-ring, 4 x 4-1/4 in.
315	Tapped Flange, 8-Bolt, 3 in. NPT
316	Flange Gasket, 8-Bolt
317	Hex Head Screw, ½-13 x 2 in.

REF NO.	DESCRIPTION
318	Hex Head Screw, 1/2-20 x 2-1/2 in.
319	Hex Head Screw, 1/2-20 x 3-1/2 in.
320	Lock Washer, ½ in.
321	Hex Nut, ½-20
322	Check Valve, 3/8 in. NPT
323	Street Elbow, 90 Deg., 3/8 in. NPT
324	Reducing Bushing, 1 in. NPT x 3/8 in. NPT
325	Flowmeter Adapter
326	Screw-Socket Head, 3/8-16 x ¾ in.
327	Flowmeter (Includes 328)
328	O-ring, 1-1/2 x 1-11/16 in.
329	Pan Head Screw, No. 10-32 x ¾ in.
335	O-ring, 2 x 2-1/4 in.

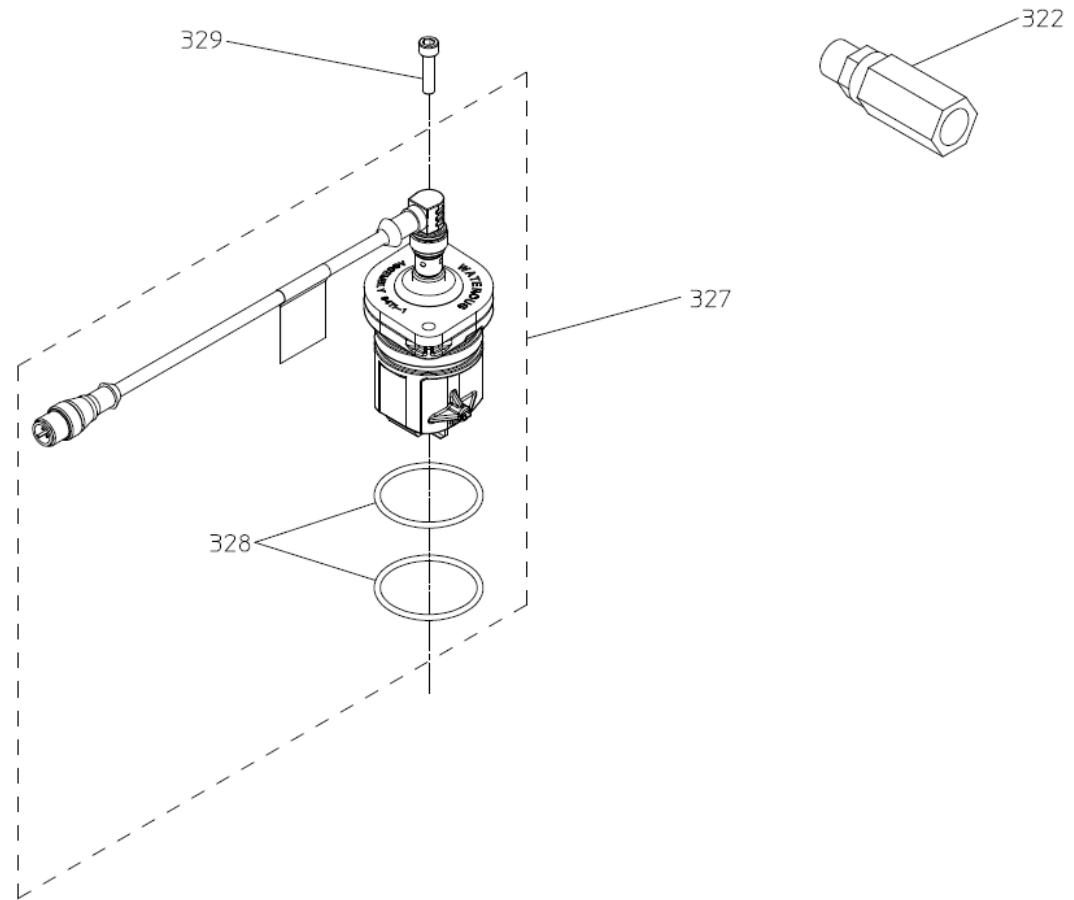




## Foam Manifold – Slide In Units

REF NO.	DESCRIPTION
322	Check Valve, 3/8 in. NPT
327	Flowmeter (Includes 328)

REF NO.	DESCRIPTION
328	O-ring, 1-1/2 x 1-11/16 in.
329	Pan Head Screw, No. 10-32 x 3/4 in.

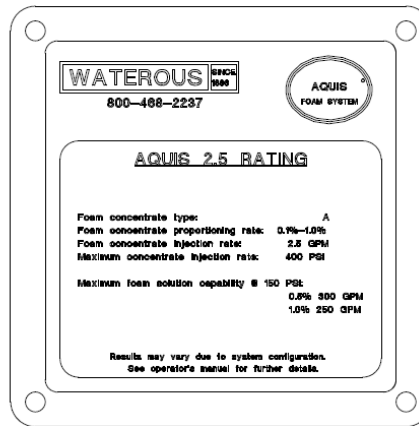


## FOAM MANIFOLD COMPONENTS – SLIDE-IN UNITS

## Panel Components

REF NO.	DESCRIPTION
111	Rating Plate (Optional)

REF NO.	DESCRIPTION



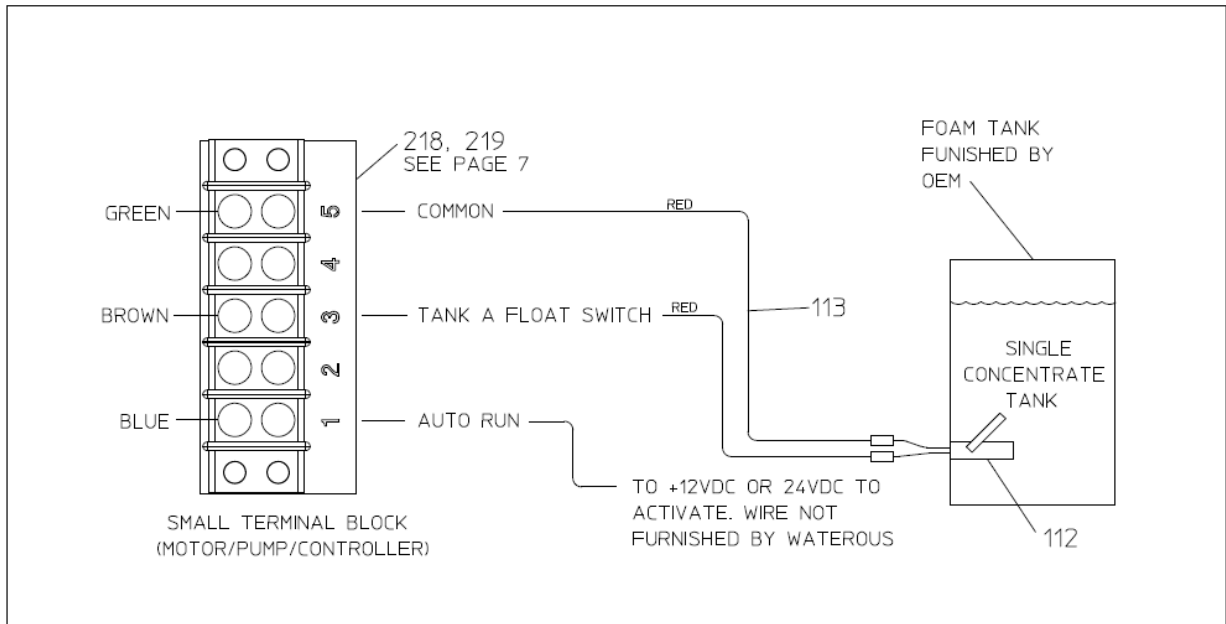
111  
(OPTIONAL)

## PANEL COMPONENTS

## Foam Tank

REF NO.	DESCRIPTION
112	Tank Level Switch
113	Tank Level Switch Wire Extension (Optional)

REF NO.	DESCRIPTION
218	Terminal Block, 5 Position
219	Number Strip



## FOAM TANK