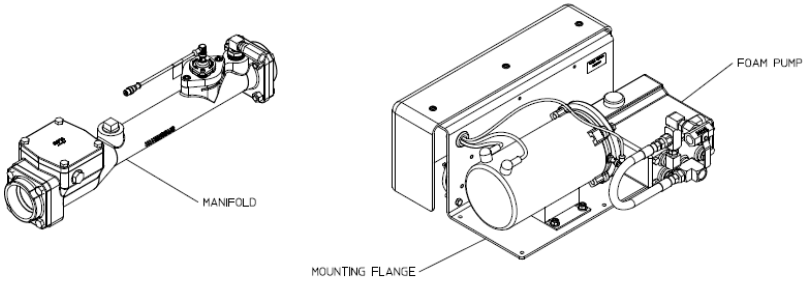
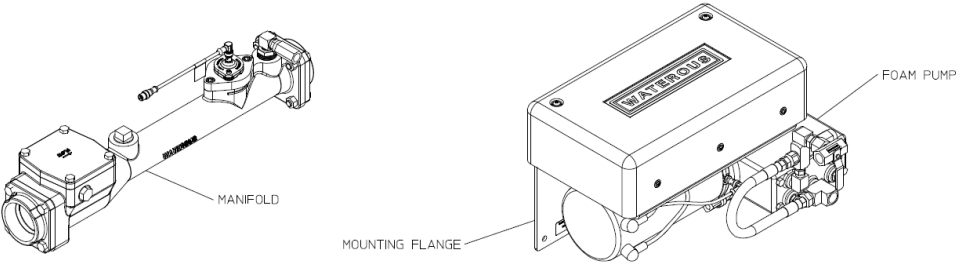


Advantus™ Foam Pump Service Parts List

Models: Advantus 3E, Advantus 3E SSP



Model Advantus 3E



Model Advantus 3E SSP

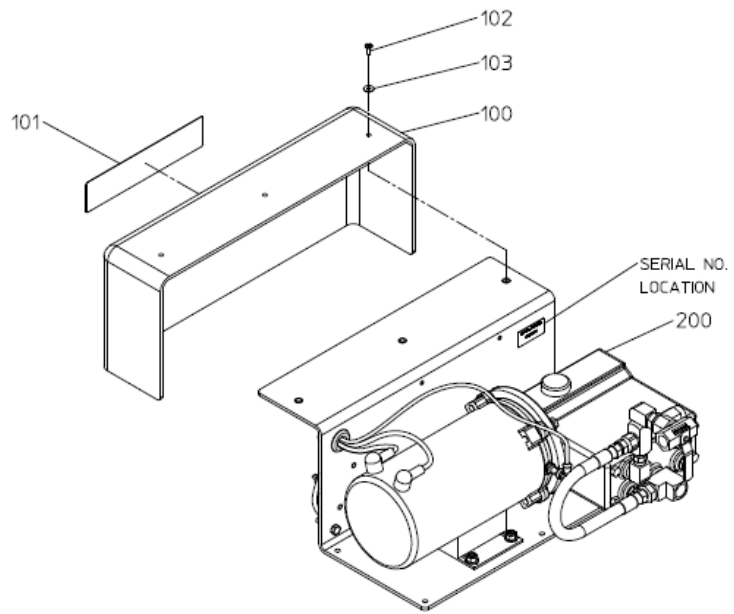
Index:

Component		See Pages	
Foam Pump	Complete Unit	2, 3	
	Pump and Motor	Model Advantus 3E	4, 5
		Model Advantus 3E SSP	6, 7
	Bracket and Control Module		8, 9
Control Box Wiring and Cables		10, 11	
Foam Manifold	2.5 in. Size	Integral Check Valve	12, 13
		Separate Check Valve	14, 15
	3.0 in. Size		16, 17
Slide-In Units		18, 19	
Panel Components		20, 21	
Foam Tank		22, 23	
Foam Supply and Inject/By-Pass Hose Kits		See Service Parts List SPL 83430	

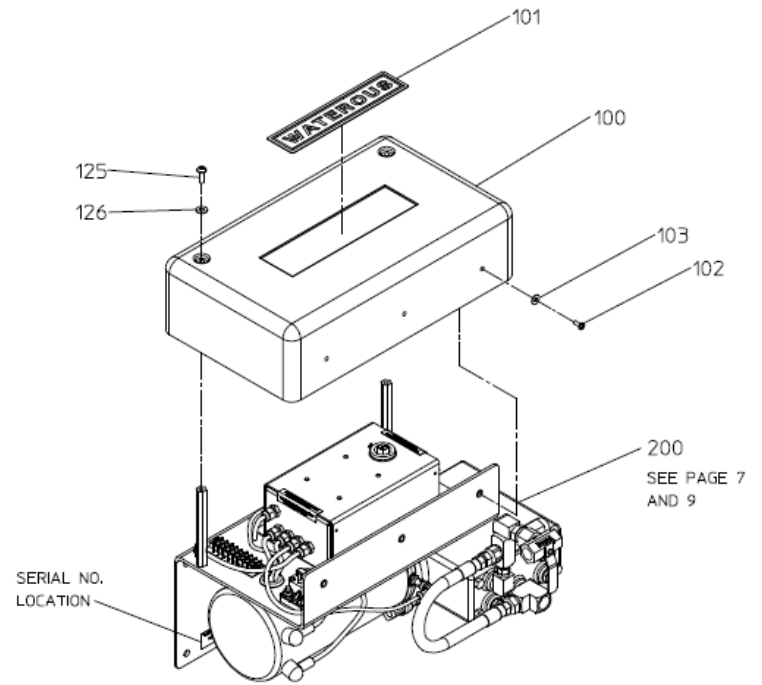
Foam Pump – Complete Unit

REF NO.	DESCRIPTION
100	Foam Pump Cover
101	Cover Label
102	Pan Head Screw, No. 10-32 x $\frac{3}{4}$ in.
103	Plain Washer, No. 10

REF NO.	DESCRIPTION
125	Pan Head Screw, $\frac{1}{4}$ -10 x $\frac{3}{4}$ in.
126	Plain Washer, $\frac{1}{4}$ in.
200	Foam Pump Ass'y (Includes 201 thru 236)



MODEL: ADVANTUS 3E



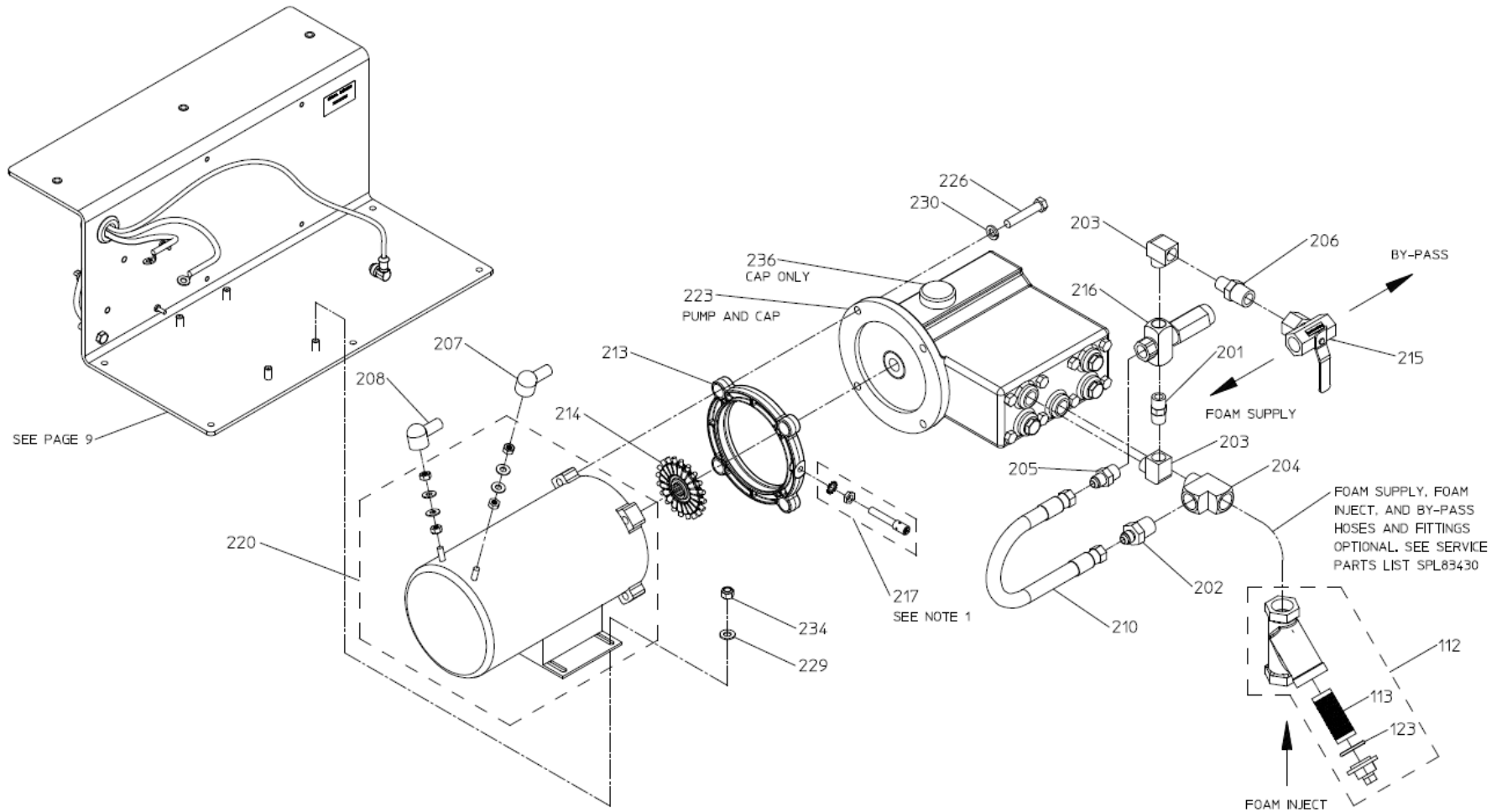
MODEL: ADVANTUS 3E SSP

FOAM PUMP – COMPLETE UNIT

**Foam Pump – Pump and Motor
Model Advantus 3E**

REF NO.	DESCRIPTION
112	Wye Strainer, ¼ in. (Includes 113 and 123)
113	Strainer Screen
123	Strainer Gasket
201	Straight Adapter, 3/8 MNPT x 3/8 MNPT
202	Straight Adapter, 6 MJIC x ½ MNPT
203	Street Elbow, 90 Deg., 3/8 NPT
204	Tee, ½ MNPT x ½ FNPT x ½ MNPT
205	Straight Adapter, 6 MJIC x 3/8 MNPT
206	Straight Adapter, 3/8 MNPT x ½ MNPT
207	Black Boot
208	Red Boot
210	Bypass Hose

REF NO.	DESCRIPTION
213	Pump Spacer
214	Sensor Wheel
215	3 Way Ball Valve
216	Pressure Regulator
217	Product Sensor
220	Electric Motor
223	Foam Pump (Includes 236)
226	Hex Head Screw, 3/8-16 x 2 in.
229	Plain Washer, 5/16 in.
230	Lock Washer, 3/8 in.
234	Nylok Hex Nut, 5/16-18
236	Oil Fill Cap, Vented



NOTE:
 1. THREAD INTO BRACKET UNTIL CONTACT IS MADE WITH SPROCKET.
 BACKOUT 1-1/4 TURNS AND TIGHTEN LOCKNUT. (.05IN GAP REQUIRED)

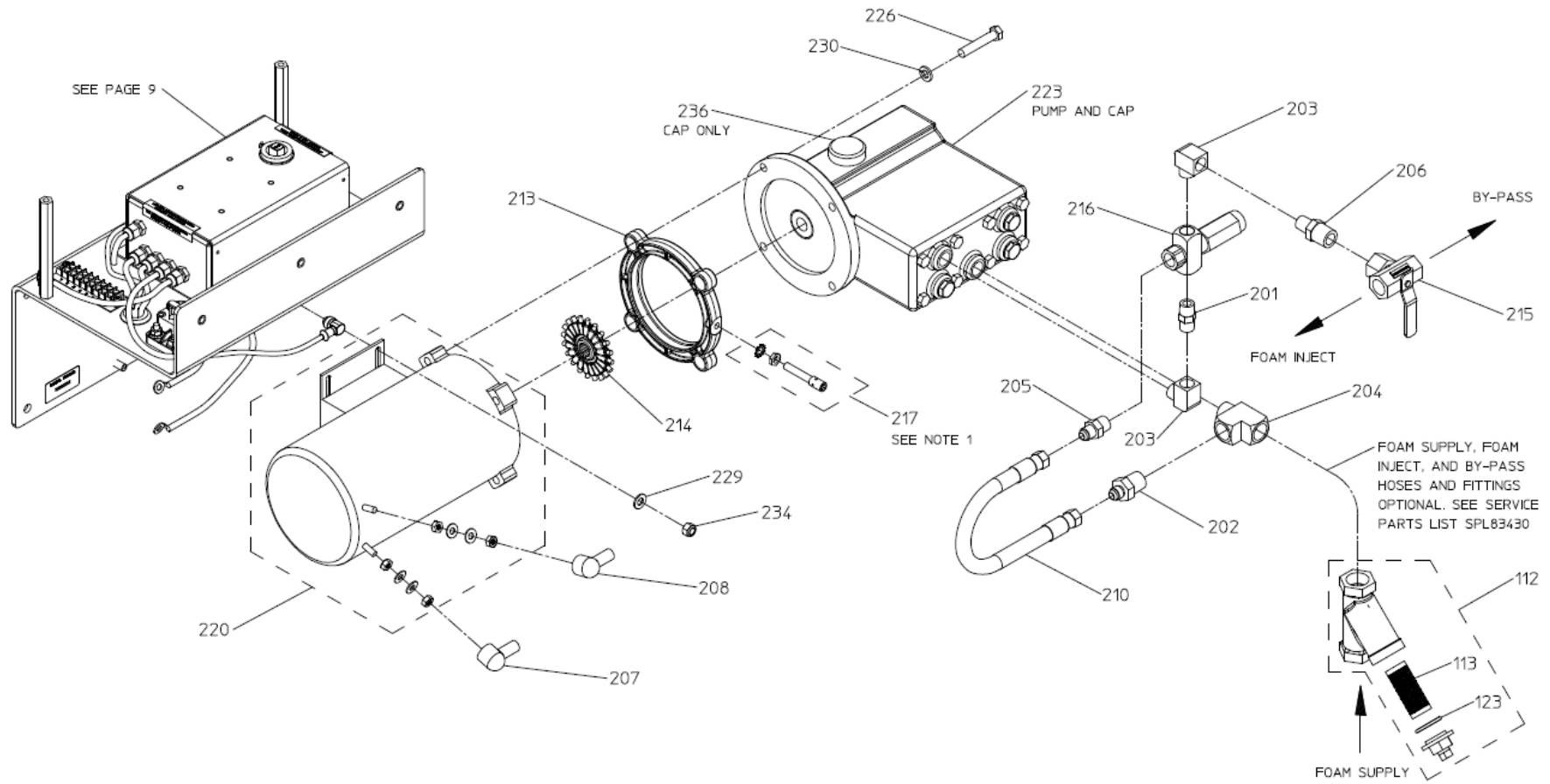
FOAM PUMP – PUMP AND MOTOR

MODEL: ADVANTUS 3E

**Foam Pump – Pump and Motor
Model Advantus 3E SSP**

REF NO.	DESCRIPTION
112	Wye Strainer, ¼ in. (Includes 113 and 123)
113	Strainer Screen
123	Strainer Gasket
201	Straight Adapter, 3/8 MNPT x 3/8 MNPT
202	Straight Adapter, 6 MJIC x ½ MNPT
203	Street Elbow, 90 Deg., 3/8 NPT
204	Tee, ½ MNPT x ½ FNPT x ½ MNPT
205	Straight Adapter, 6 MJIC x 3/8 MNPT
206	Straight Adapter, 3/8 MNPT x ½ MNPT
207	Black Boot
208	Red Boot
210	Bypass Hose

REF NO.	DESCRIPTION
213	Pump Spacer
214	Sensor Wheel
215	3 Way Ball Valve
216	Pressure Regulator
217	Product Sensor
220	Electric Motor
223	Foam Pump (Includes 236)
226	Hex Head Screw, 3/8-16 x 2 in.
229	Plain Washer, 5/16 in.
230	Lock Washer, 3/8 in.
234	Nylok Hex Nut, 5/16-18
236	Oil Fill Cap, Vented



NOTE:
 1. THREAD INTO BRACKET UNTIL CONTACT IS MADE WITH SPROCKET. BACKOUT 1-1/4 TURNS AND TIGHTEN LOCKNUT. (.05IN GAP REQUIRED)

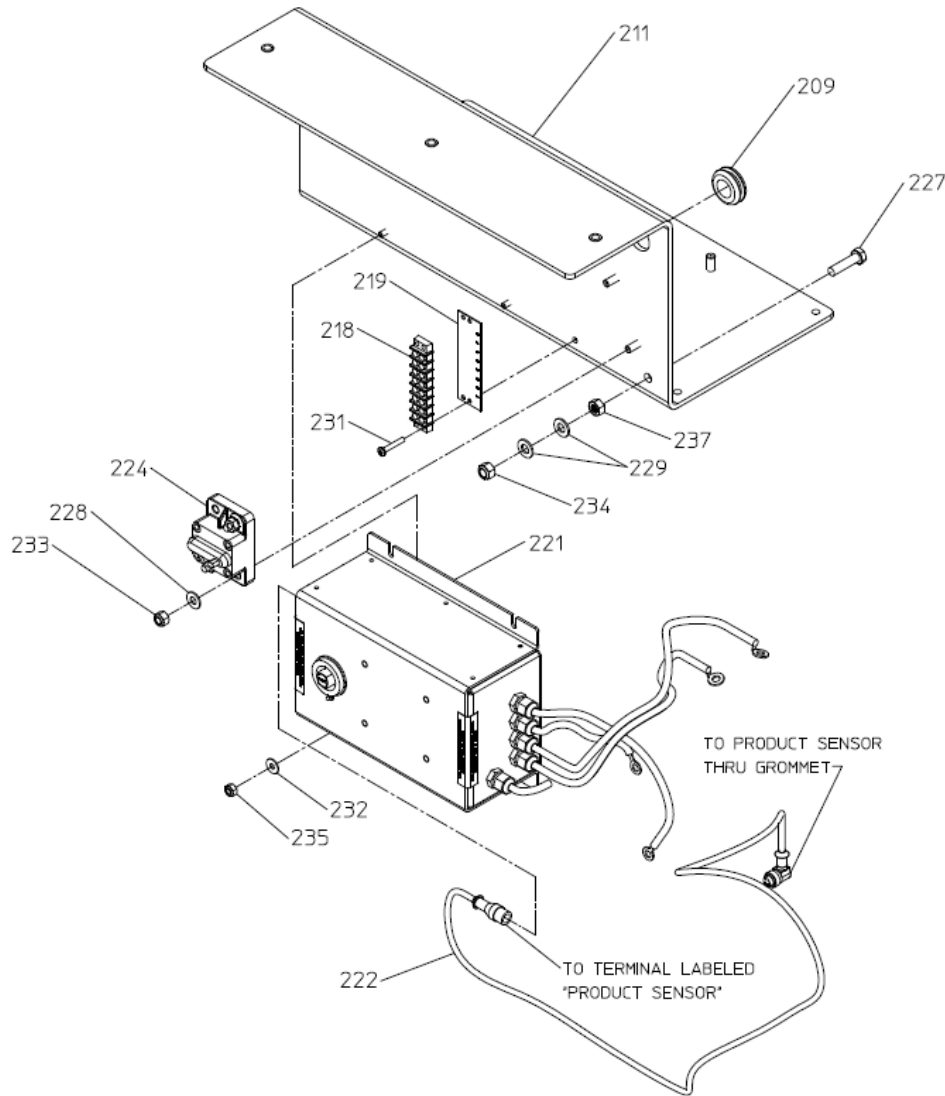
FOAM PUMP – PUMP AND MOTOR

MODEL: ADVANTUS 3E SSP

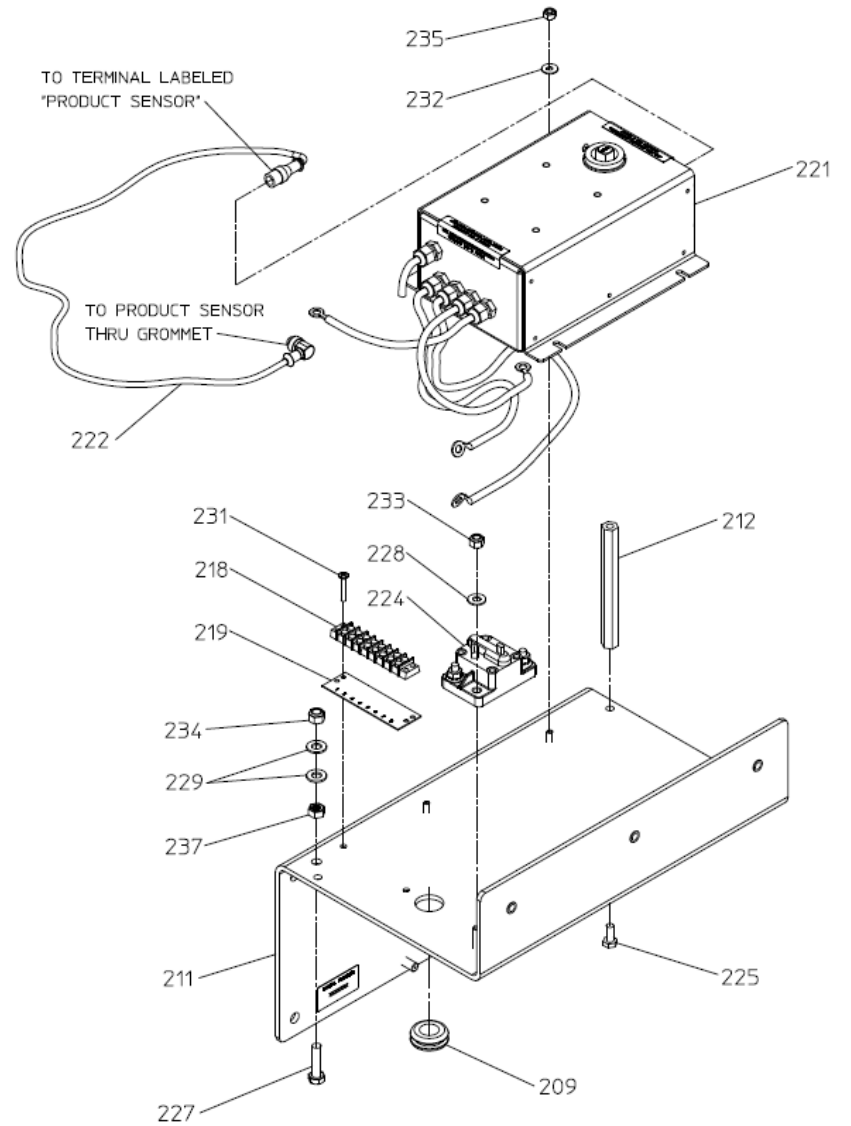
Foam Pump – Bracket and Control Module

REF NO.	DESCRIPTION
209	Grommet
211	Z Bracket
212	Standoff, 14/-20 x 5 in.
218	Terminal Block, 8 Position
219	Number Strip
221	Control Box
222	Product Sensor Cable
224	Circuit Breaker
227	Hex Head Screw, 5/16-18 x 1-1/4 in.

REF NO.	DESCRIPTION
228	Plain Washer, ¼ in.
229	Plain Washer, 5/16 in.
231	Screw-Pan Head, No. 8-32 x ¼ in.
232	Plain Washer, No. 10
233	Nylok Hex Nut, ¼-20
234	Nylok Hex Nut, 5/16-18
235	Nylok Hex Nut, No. 10-32



MODEL: ADVANTUS 3E



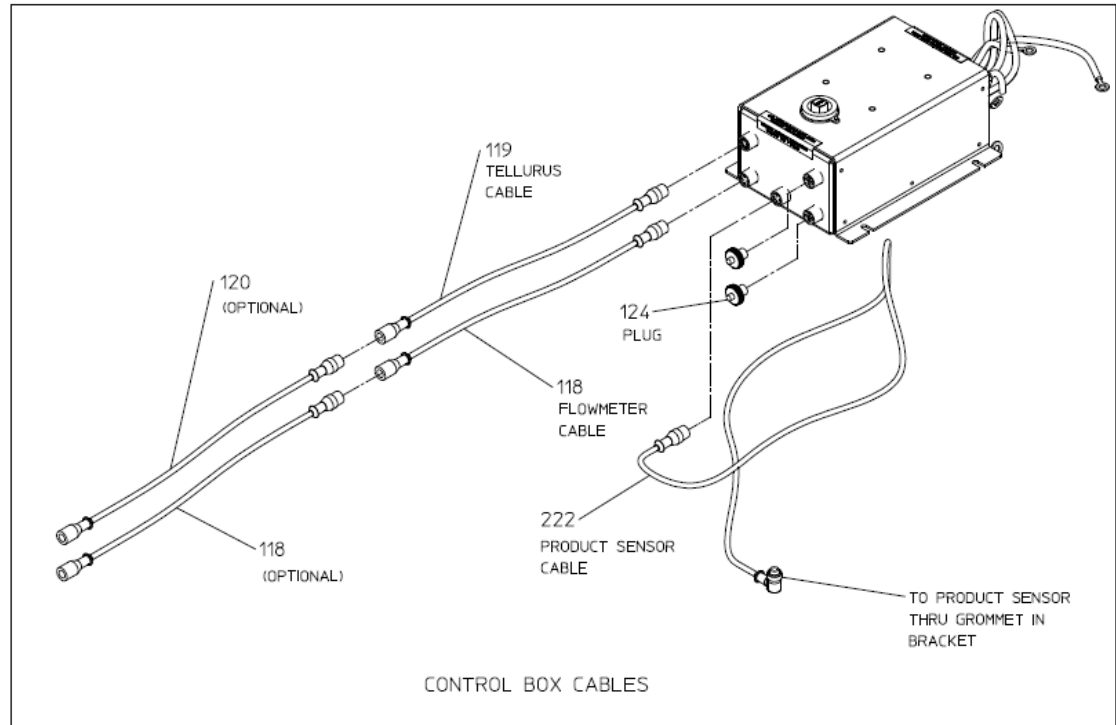
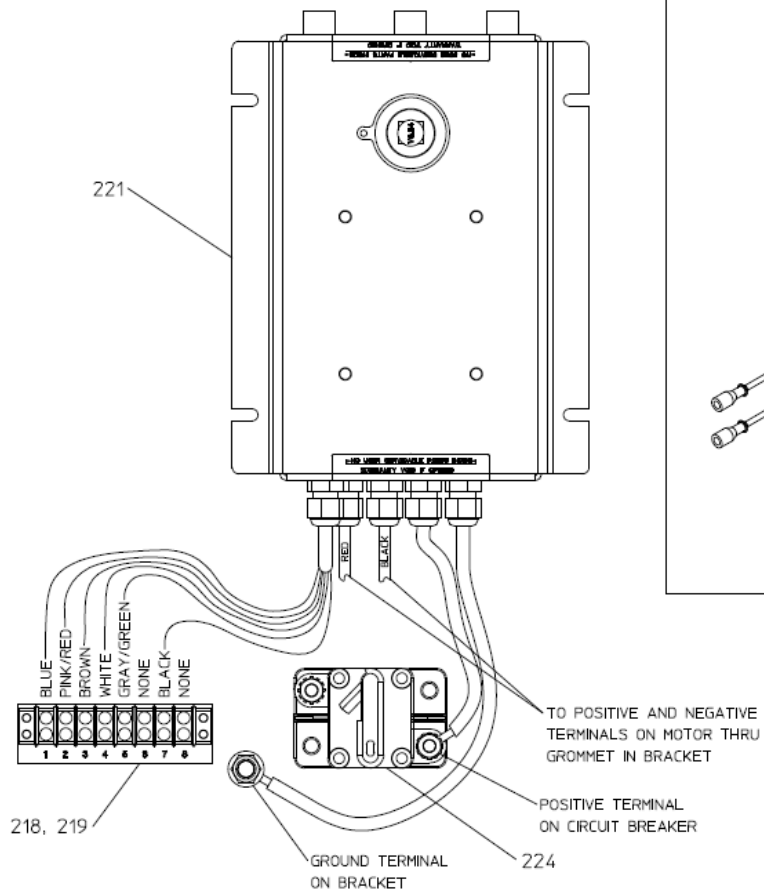
MODEL: ADVANTUS 3E SSP

FOAM PUMP – BRACKET & CONTROL MODULE

Foam Pump – Control Box Wiring and Cables

REF NO.	DESCRIPTION
118	Flowmeter Cable, 3 Meter Length
119	Tellurus Cable, 3 Meter Length
120	Tellurus Cable, Extension (Optional)
124	Port Plug
218	Terminal Block, 8 Position

REF NO.	DESCRIPTION
219	Number Strip
221	Control Box
222	Product Sensor Cable
224	Circuit Breaker

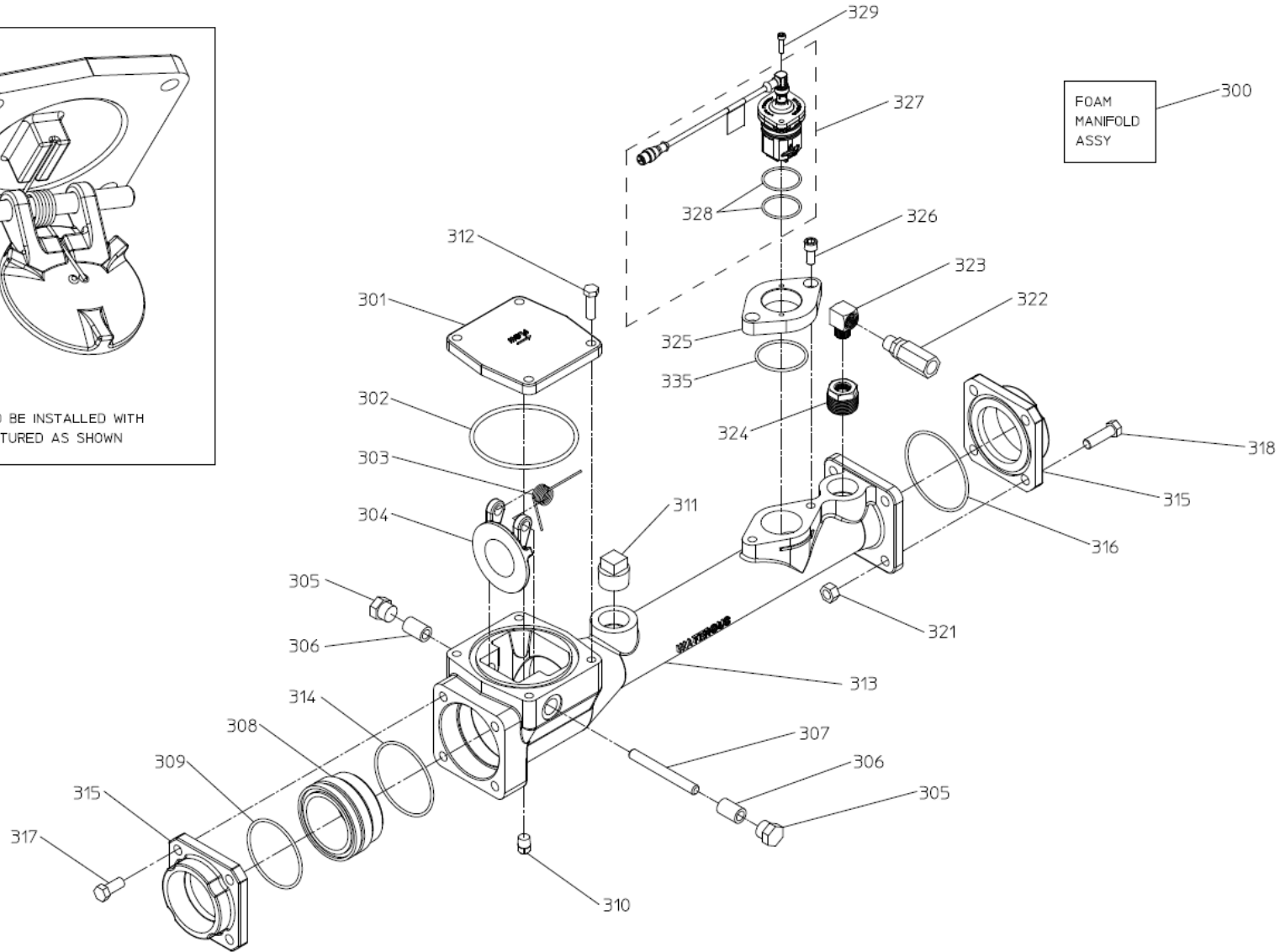
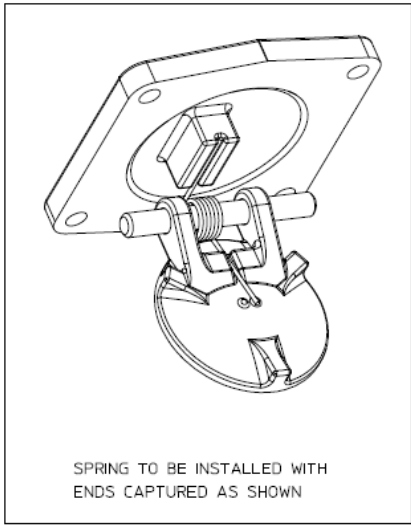


FOAM PUMP – CONTROL BOX WIRING AND CABLES

Foam Manifold – 2.5 in. Size Internal Check Valve

REF NO.	DESCRIPTION
300	Manifold Assembly (Includes 301 thru 335)
301	Cover-Valve
302	O-ring, 4-1/4 x 4-5/8 in.
303	Torsion Spring
304	Valve Disc
305	Hex Head Plug
306	Shaft Spacer
307	Hinge Pin
308	Valve Seat
309	O-ring, 3 x 3-1/4 in.
310	Square Head Pipe Plug, ¼ in. NPT
311	Square Head Pipe Plug, 1 in. NPT
312	Hex Head Screw, 3/8-16 x 1-1/4 in.
313	Pipe-Flowmeter
314	O-ring, 3-1/4 x 3-1/2 in.

REF NO.	DESCRIPTION
315	Tapped Flange, 4-Bolt, 2-1/2 in. NPT
316	O-ring, 3-1/2 x 3-3/4 in.
317	Hex Head Screw, 7/16-14 x 1 in.
318	Hex Head Screw, 7/16-20 x 1-1/2 in.
321	Hex Nut, 7/16-20
322	Check Valve, 3/8 in. NPT
323	Street Elbow, 90 Deg., 3/8 in. NPT
324	Reducing Bushing, 1 in. NPT x 3/8 in. NPT
235	Flowmeter Adapter
326	Screw-Socket Head, 3/8-16 x ¾ in.
327	Flowmeter (Includes 328)
328	O-ring, 1-1/2 x 1-11/16 in.
329	Pan Head Screw, No. 10-32 x ¾ in.
335	O-ring, 2 x 2-1/4 in.

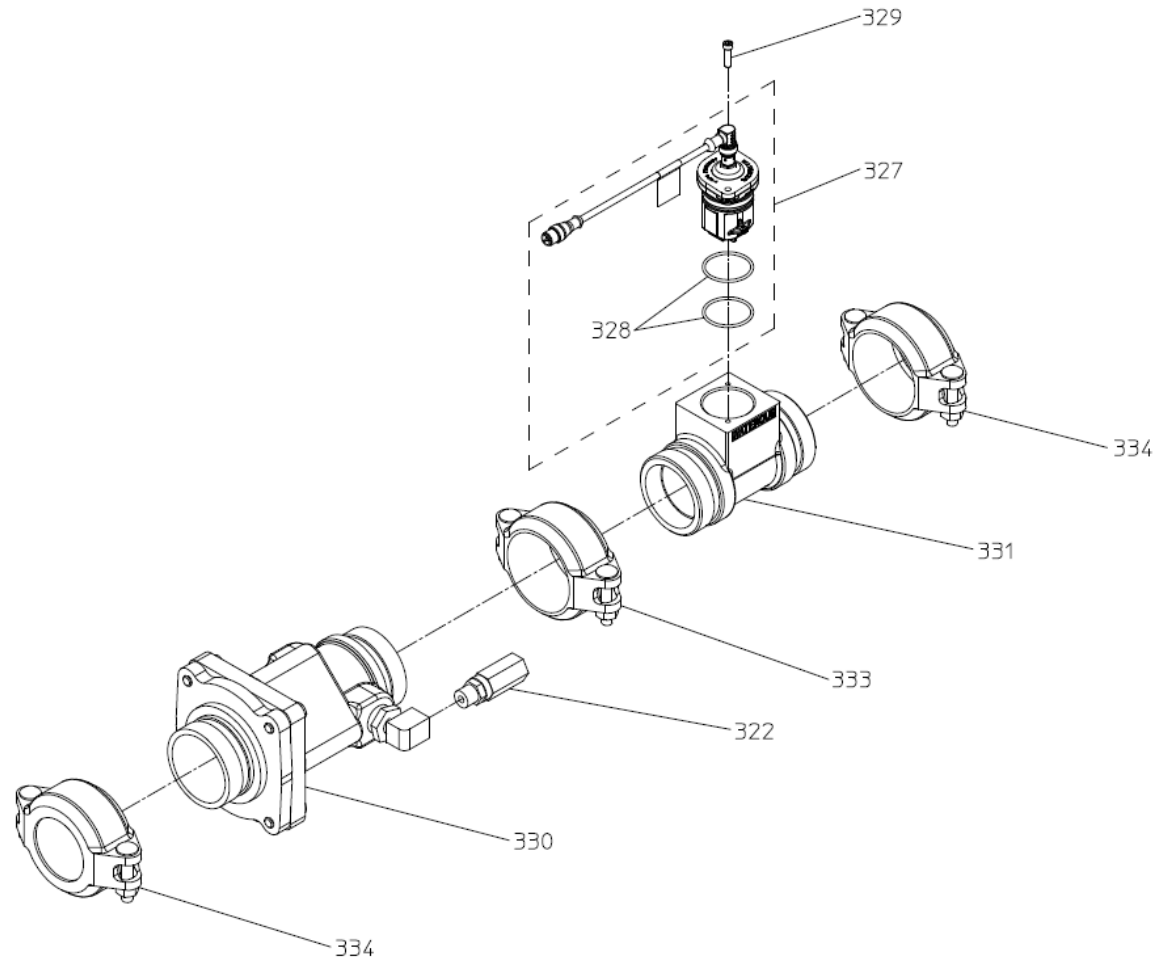


FOAM MANIFOLD – 2.5 IN. (INTEGRAL CHECK VALVE)

**Foam Manifold – 2.5 in. Size
Separate Check Valve**

REF NO.	DESCRIPTION
322	Check Valve, 3/8 in. NPT
327	Flowmeter (Includes 328)
328	O-ring, 1-1/2 x 1-11/16 in.
329	Pan Head Screw, No. 10-32 x 3/4 in.

REF NO.	DESCRIPTION
330	Master Waterway Check Valve
331	Flowmeter Tee, FNPT x Victaulic
333	Victaulic Clamp, 2-1/2 in.
334	Victaulic Reducing Clamp, 2-1/2 x 2 in.

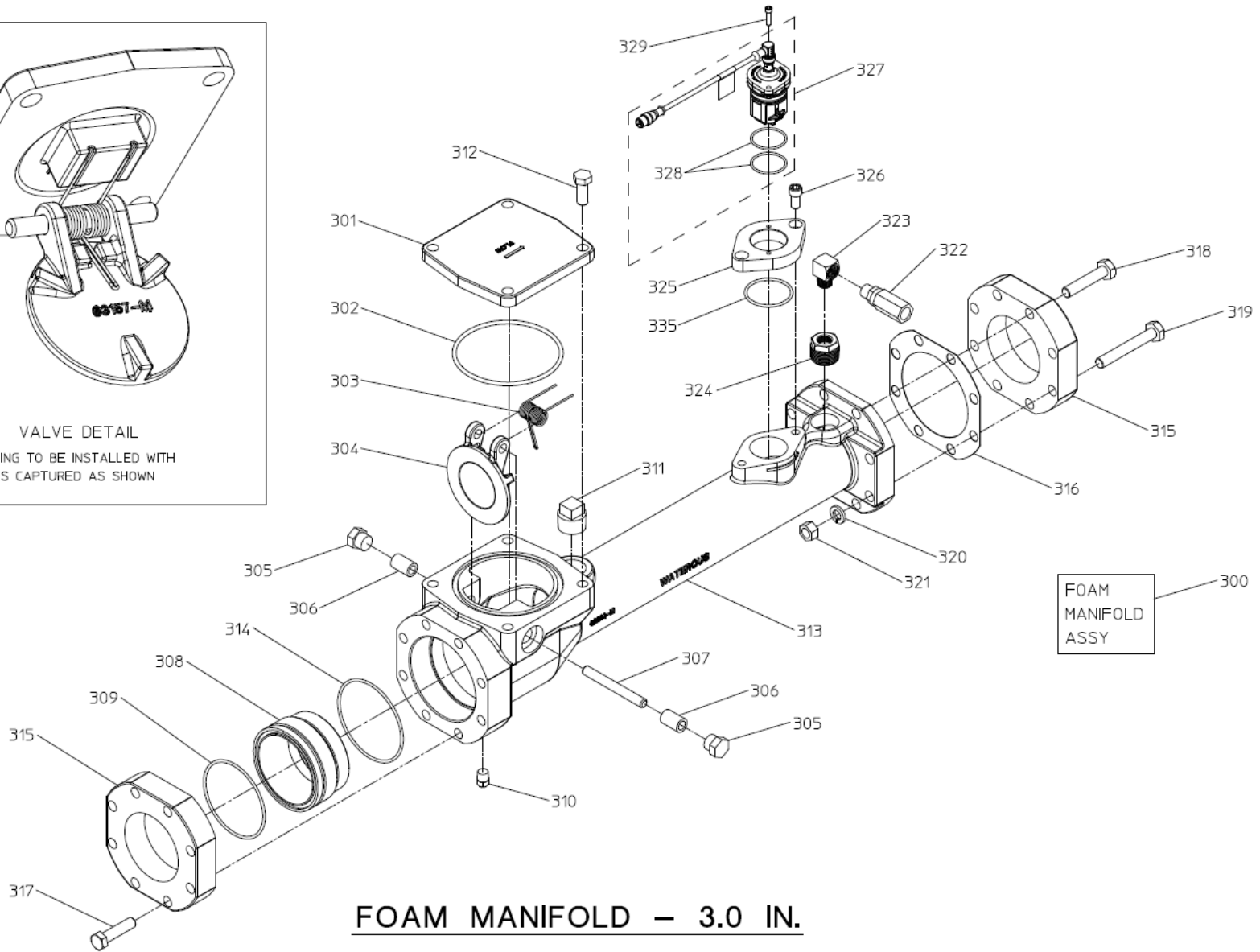
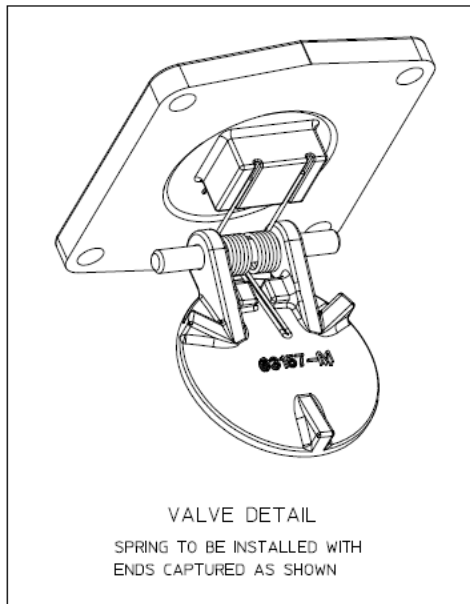


FOAM MANIFOLD – 2.5 IN. (SEPARATE CHECK VALVE)

Foam Manifold – 3.0 in. Size

REF NO.	DESCRIPTION
300	Manifold Assembly (Includes 301 thru 335)
301	Cover-Valve
302	O-ring, 4-3/4 x 5-1/8 in.
303	Torsion Spring
304	Valve Disc
305	Hex Head Plug
306	Shaft Spacer
307	Hinge Pin
308	Valve Seat
309	O-ring, 3-3/4 x 4 in.
310	Square Head Pipe Plug, ¼ in. NPT
311	Square Head Pipe Plug, 1 in. NPT
312	Hex Head Screw, ½-13 x 1-1/4 in.
313	Pipe-Flowmeter
314	O-ring, 4 x 4-1/4 in.
315	Tapped Flange, 8-Bolt, 3 in. NPT
316	Flange Gasket, 8-Bolt

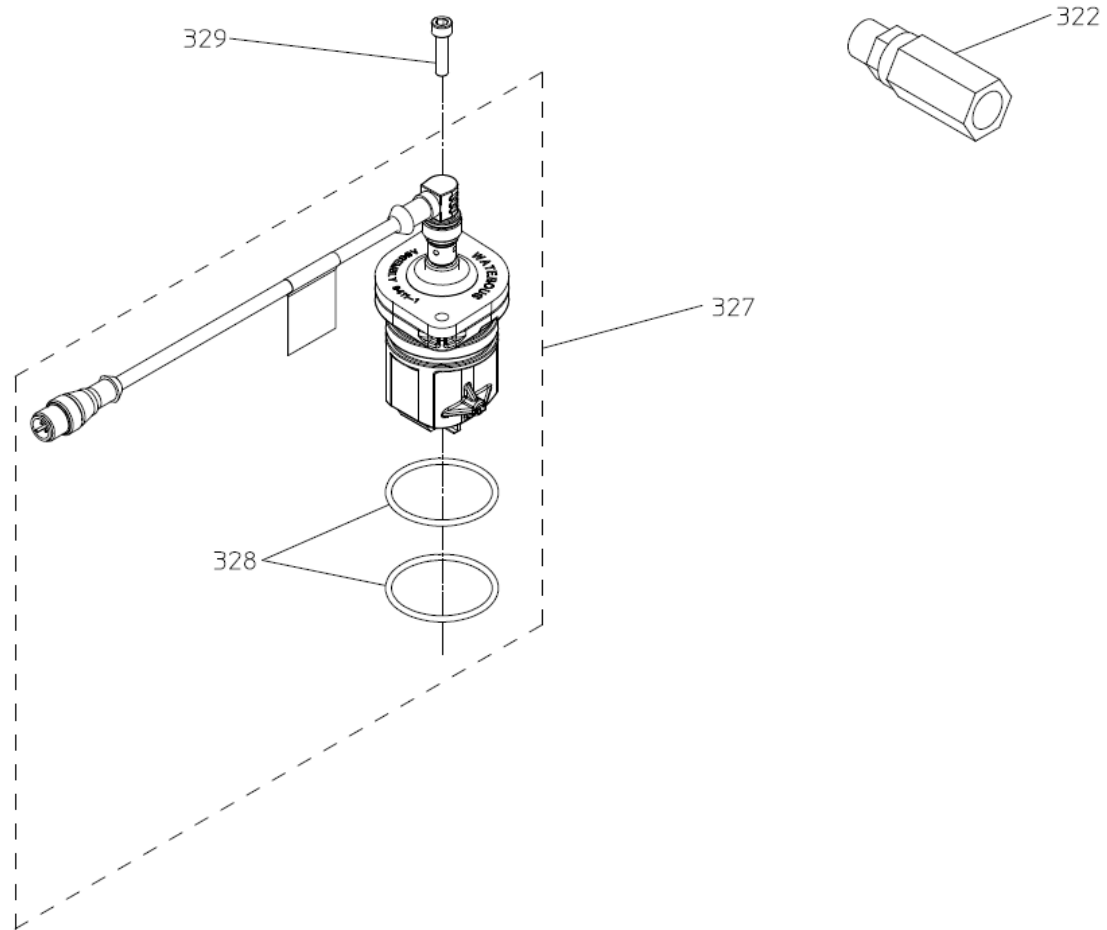
REF NO.	DESCRIPTION
317	Hex Head Screw, ½-13 x 2 in.
318	Hex Head Screw, ½-20 x 2-1/2 in.
319	Hex Head Screw, ½-20 x 3-1/2 in.
320	Lock Washer, ½ in.
321	Hex Nut, 1/2-20
322	Check Valve, 3/8 in. NPT
323	Street Elbow, 90 Deg., 3/8 in. NPT
324	Reducing Bushing, 1 in. NPT x 3/8 in. NPT
325	Flowmeter Adapter
326	Screw-Socket Head, 3/8-16 x ¾ in.
327	Flowmeter (Includes 328)
328	O-ring, 1-1/2 x 1-11/16 in.
329	Pan Head Screw, No. 10-32 x ¾ in.
335	O-ring, 2 x 2-1/4 in.



Foam Manifold – Slide In Units

REF NO.	DESCRIPTION
322	Check Valve, 3/8 in. NPT
327	Flowmeter (Includes 328)

REF NO.	DESCRIPTION
328	O-ring, 1-1/2 x 1-11/16 in.
329	Pan Head Screw, No. 10-32 x 3/4 in.



FOAM MANIFOLD COMPONENTS – SLIDE-IN UNITS

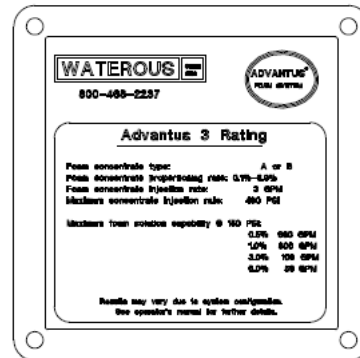
Panel Components

REF NO.	DESCRIPTION
106	Rating Plate (Optional)

REF NO.	DESCRIPTION
110	Warning Label



110



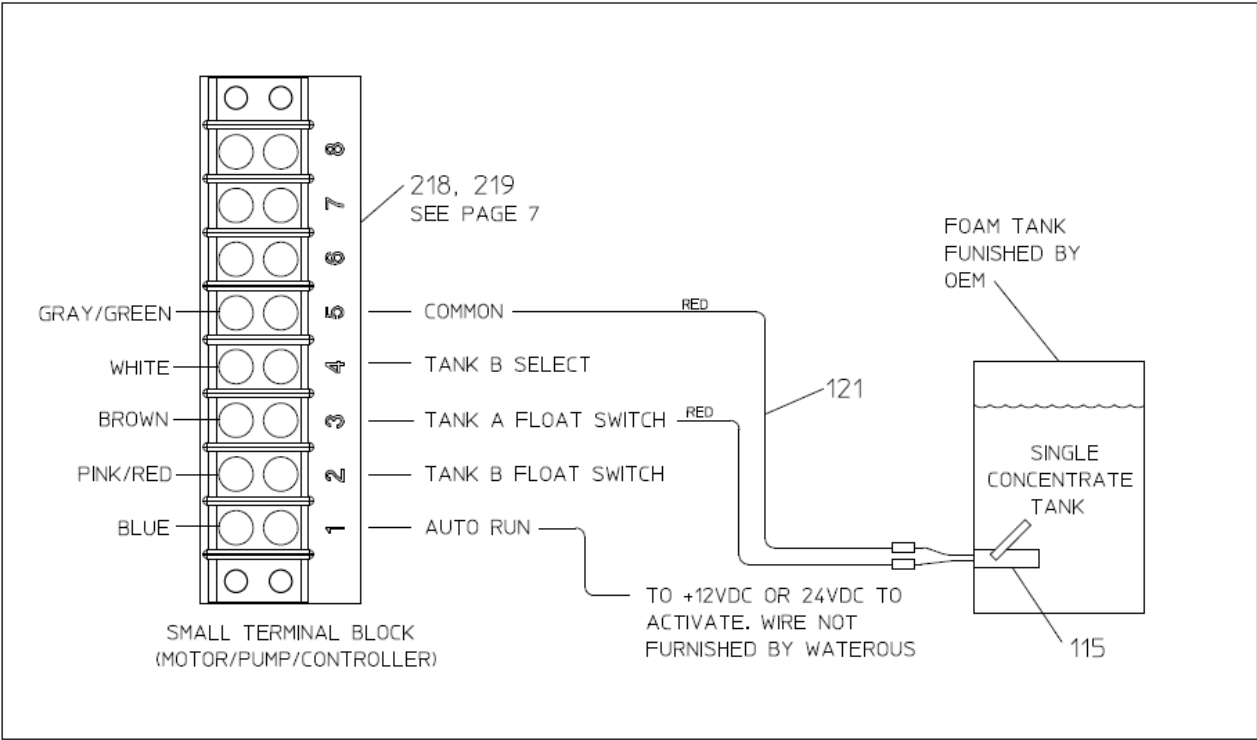
106
(OPTIONAL)

PANEL COMPONENTS

Foam Tank

REF NO.	DESCRIPTION
115	Tank Level Switch
121	Tank Level Switch Wire Extension (Optional)

REF NO.	DESCRIPTION
218	Terminal Block, 8 Position
219	Number Strip



FOAM TANK