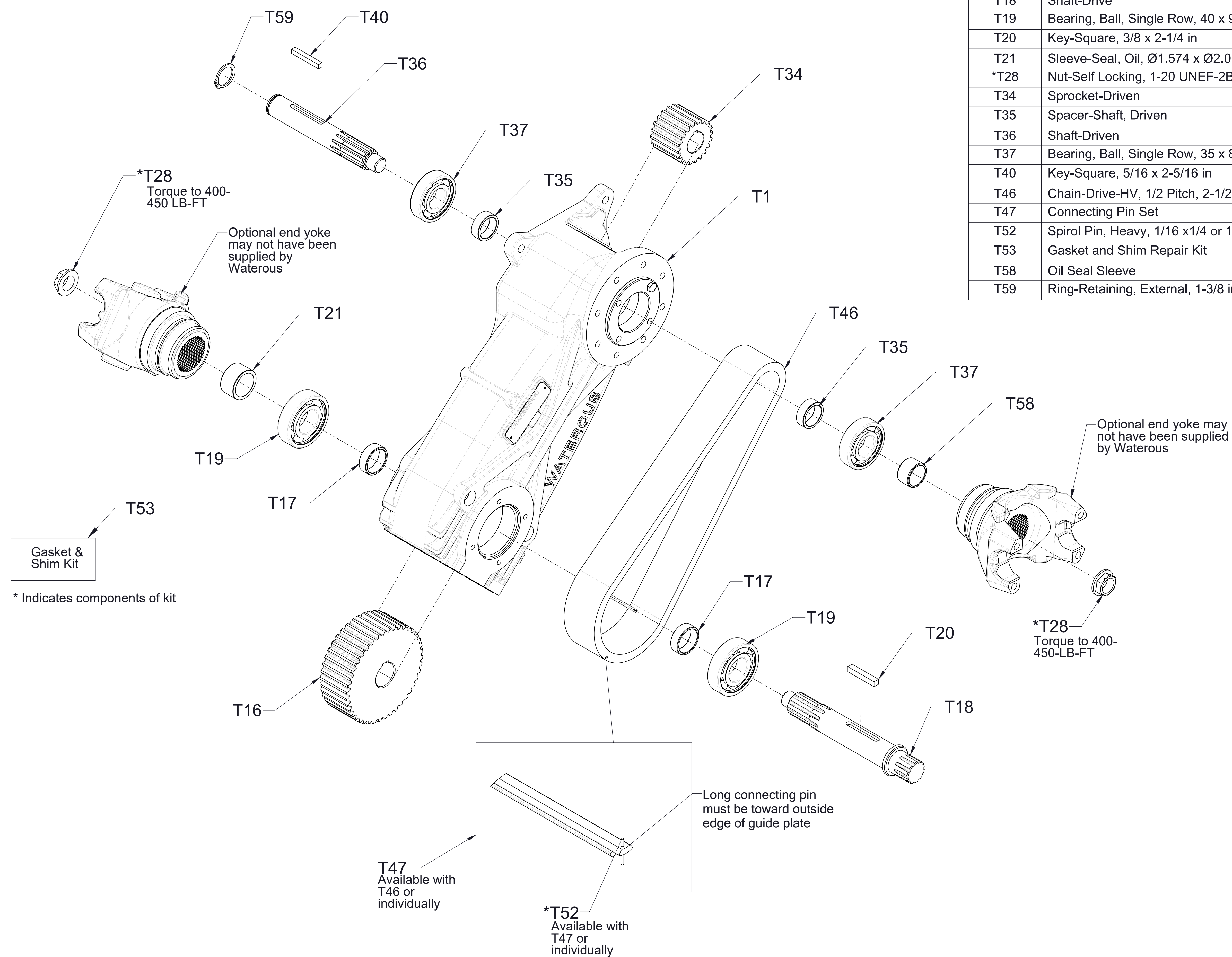


Model TPA Power Take-Off Service Parts List

Output Shaft	Components	Page
Rear (Opposite Side of Input Shaft)	Internal Components	2
	External Components	3
Front (Same Side as Input Shaft)	Internal Components	4
	External Components	5

Note: When ordering repair parts, please provide P.T.O. serial number.

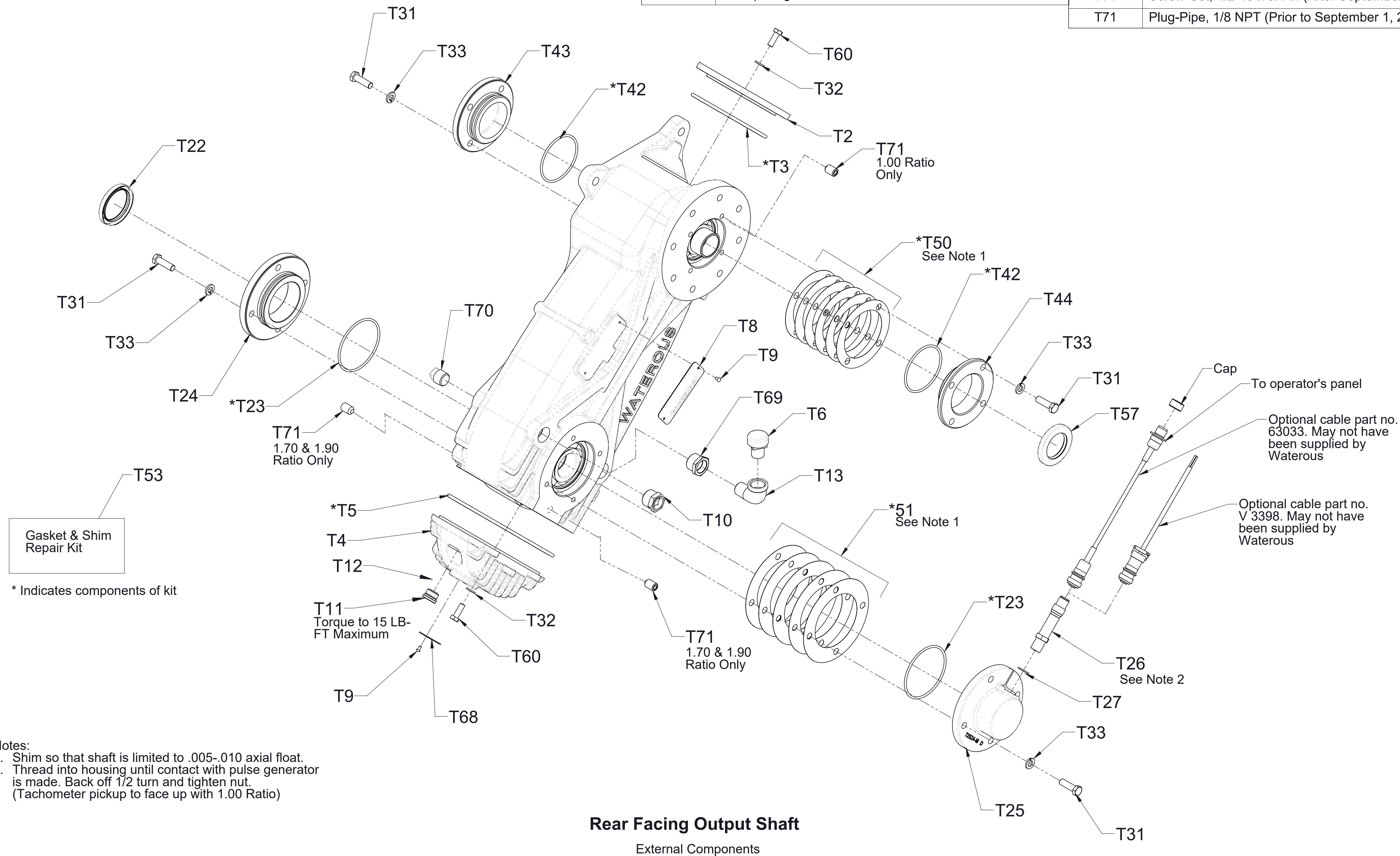


Ref No.	Description
T1	Case-Transmission
T16	Sprocket-Drive
T17	Spacer-Shaft, Drive
T18	Shaft-Drive
T19	Bearing, Ball, Single Row, 40 x 90 x 23 mm
T20	Key-Square, 3/8 x 2-1/4 in
T21	Sleeve-Seal, Oil, Ø1.574 x Ø2.000 x 1.094 in
*T28	Nut-Self Locking, 1-20 UNEF-2B
T34	Sprocket-Driven
T35	Spacer-Shaft, Driven
T36	Shaft-Driven
T37	Bearing, Ball, Single Row, 35 x 80 x 21 mm
T40	Key-Square, 5/16 x 2-5/16 in
T46	Chain-Drive-HV, 1/2 Pitch, 2-1/2in Wide
T47	Connecting Pin Set
T52	Spirol Pin, Heavy, 1/16 x1/4 or 1/16 x 5/16 in
T53	Gasket and Shim Repair Kit
T58	Oil Seal Sleeve
T59	Ring-Retaining, External, 1-3/8 in Shaft Dia

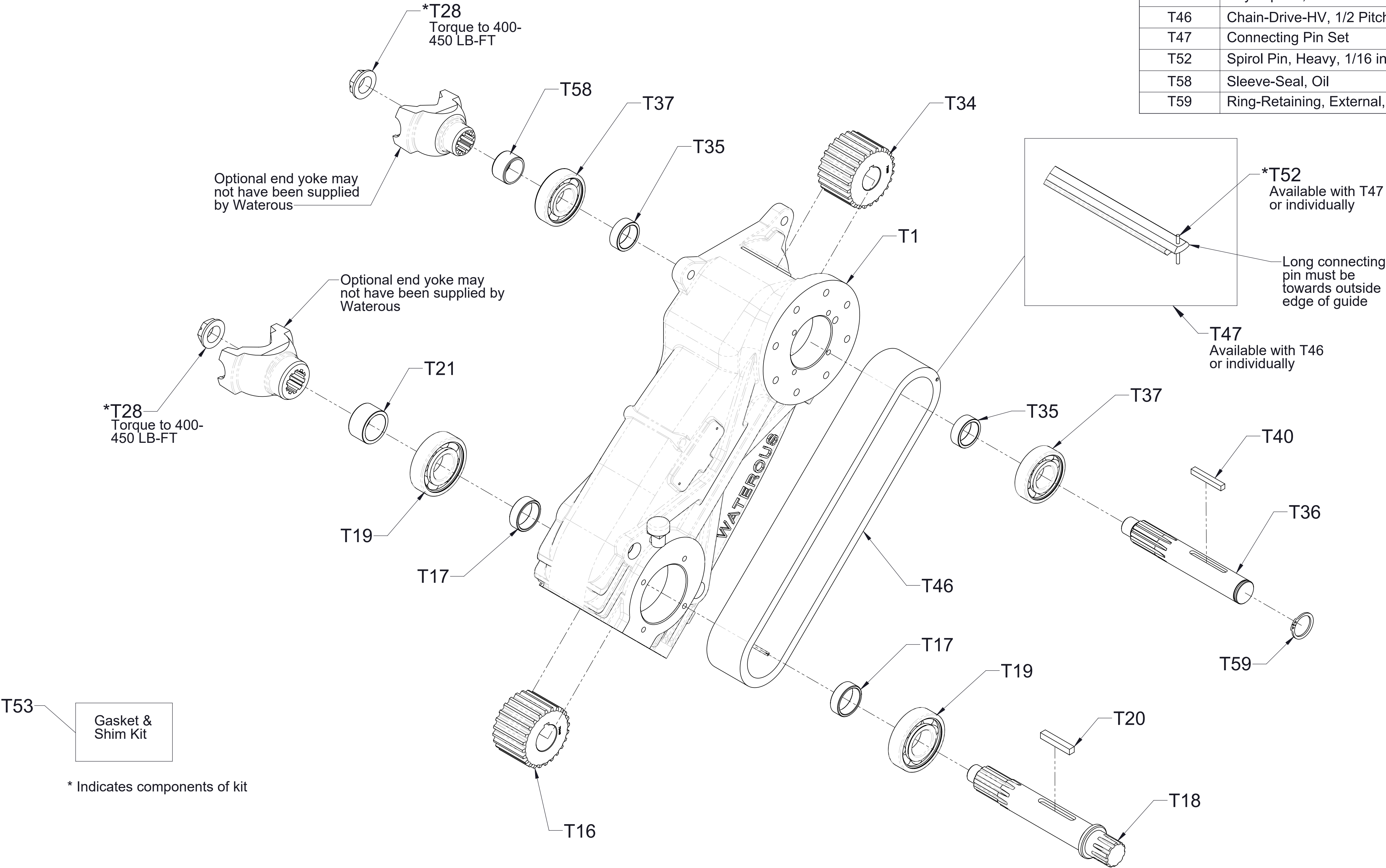
Rear Facing Output Shaft

Internal Components

Ref No.	Description	Ref No.	Description
T2	Cover-Case	T27	O-Ring, 5/8 x 3/4 in
*T3	O-Ring, 4-5/8 x 5 in	T31	Screw-Hex Hd, 3/8-16 x 1-1/4 in
T4	Pan-Transmission	T32	Washer-Lock, 5/16 in
*T5	O-Ring, 7 x 7-3/8 in	T33	Washer-Lock, 3/8 in
T6	Breather, 1/2 NPT	*T42	O-Ring, 2-7/8 x 3-1/8 in
T8	Plate-Serial	T43	Housing-Oil Seal, 4-3/4 OD
T9	Screw-Drive, #6 x 1/4 in	T44	Housing-Oil Seal, 4-1/2 OD
T10	Plug-Site, Glass, 3/4 NPT	*T50	Shim-Driven Shaft Housing
T11	Drain Plug	*T51	Shim-Drive Shaft Housing
T12	Plug Seal	T53	Gasket and Shim Repair Kit
T13	Elbow-Street, 90°, 1/2 NPT	T57	Seal-Oil, 1-5/8 x 2-5/8 in
T22	Seal-Oil, 2 x 2-5/8 in	T60	Screw-Hex Hd, 5/16-18 x 7/8 in
*T23	O-Ring, 3-1/4 x 3-1/2 in	T68	Plate-Oil Level
T24	Housing-Oil Seal, 5-1/2 O.D.	T69	Bushing-Reducing, Pipe, 3/4 x 1/2 NPT
T25	Housing-Tachometer	T70	Plug-Pipe, Square Hd, 1/2 NPT
T26	Pickup-Magnetic	T71	Screw-Set, 1/2-13 x 3/4 in (After September 1, 2016)
		T71	Plug-Pipe, 1/8 NPT (Prior to September 1, 2016)

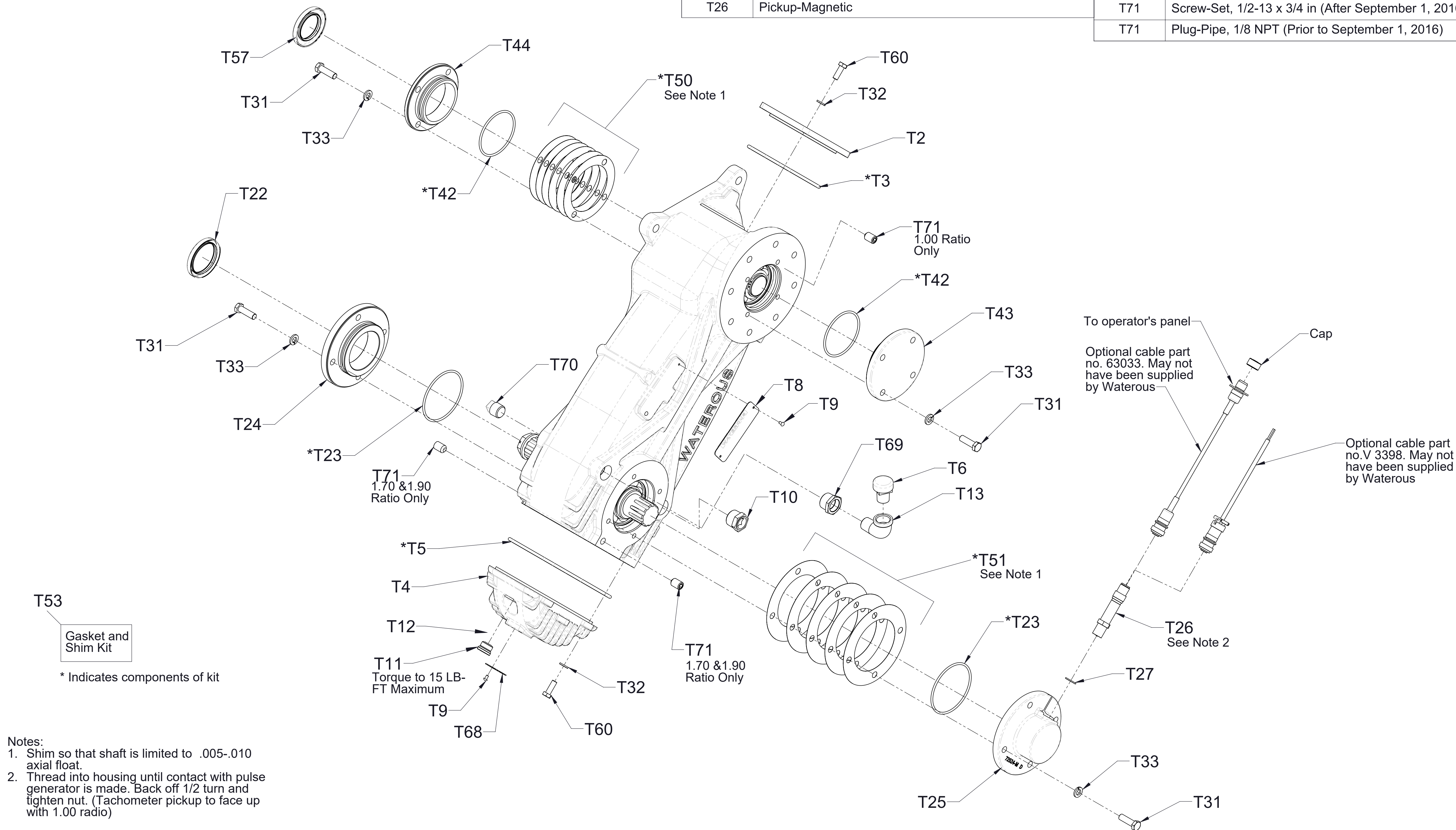


Ref No.	Description
T1	Case-Transmission
T16	Sprocket-Drive
T17	Spacer-Shaft, Drive
T18	Shaft-Drive
T19	Bearing, Ball, Single Row, 40 x 90 x 23 mm
T20	Key-Square, 3/8 x 2-1/4 in
T21	Sleeve-Seal, Oil, Ø1.574 x Ø2.000 x 1.094 in
*T28	Nut-Self Locking, 1-20 UNEF-2B
T34	Sprocket-Driven
T35	Spacer-Shaft, Driven
T36	Shaft-Driven
T37	Bearing, Ball, Single Row, 35 x 80 x 21 mm
T40	Key-Square, 5/16 x 2-5/16 in
T46	Chain-Drive-HV, 1/2 Pitch, 2-1/2in Wide
T47	Connecting Pin Set
T52	Spirol Pin, Heavy, 1/16 in
T58	Sleeve-Seal, Oil
T59	Ring-Retaining, External, 1-3/8 in Shaft Dia



Front Facing Output Shaft
Internal Components

Ref No.	Description	Ref No.	Description
T2	Cover-Case	T27	O-Ring, 5/8 x 3/4 in
*T3	O-Ring, 4-5/8 x 5 in	T31	Screw-Hex Hd, 3/8-16 x 1-1/4 in
T4	Pan-Transmission	T32	Washer-Lock, 5/16 in
*T5	O-Ring, 7 x 7-3/8 in	T33	Washer-Lock, 3/8 in
T6	Breather, 1/2 NPT	*T42	O-Ring, 2-7/8 x 3-1/8 in
T8	Serial Plate	T43	Housing-Oil Seal, 4-3/4 OD
T9	Screw-Drive, #6 x 1/4 in	T44	Housing-Oil Seal, 4-1/2 OD
T10	Plug-Site, Glass, 3/4 NPT	*T50	Shim-Driven Shaft Housing
T11	Drain Plug	*T51	Shim-Drive Shaft Housing
T12	Plug Seal	T53	Gasket and Shim Repair Kit
T13	Elbow-Street, 90°, 1/2 NPT	T57	Seal-Oil, 1-5/8 x 2-5/8 in
T22	Seal-Oil, 2 x 2-5/8 in	T60	Screw-Hex Hd, 5/16-18 x 7/8 in
*T23	O-Ring, 3-1/4 x 3-1/2 in	T68	Plate-Oil Level
T24	Housing-Oil Seal, 5-1/2 O.D.	T69	Bushing-Reducing, Pipe, 3/4 x 1/2 NPT
T25	Housing-Tachometer	T70	Plug-Pipe, Square Hd, 1/2 NPT
T26	Pickup-Magnetic	T71	Screw-Set, 1/2-13 x 3/4 in (After September 1, 2016)
		T71	Plug-Pipe, 1/8 NPT (Prior to September 1, 2016)



Front Facing Output Shaft
External Components