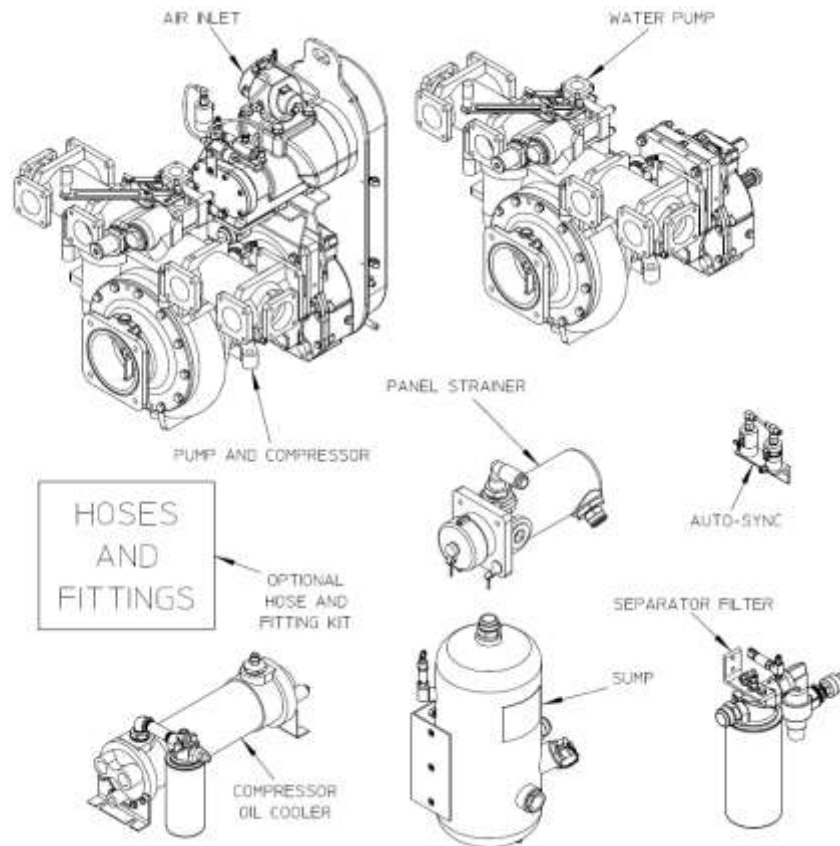


Air Compressor Service Parts List
One-Step™ CAFS Model 150-OS
Eclipse GEN 2.0 CAFS Model 150-ECL
Pump Models HL200K, HL300K, HL400K

Index:

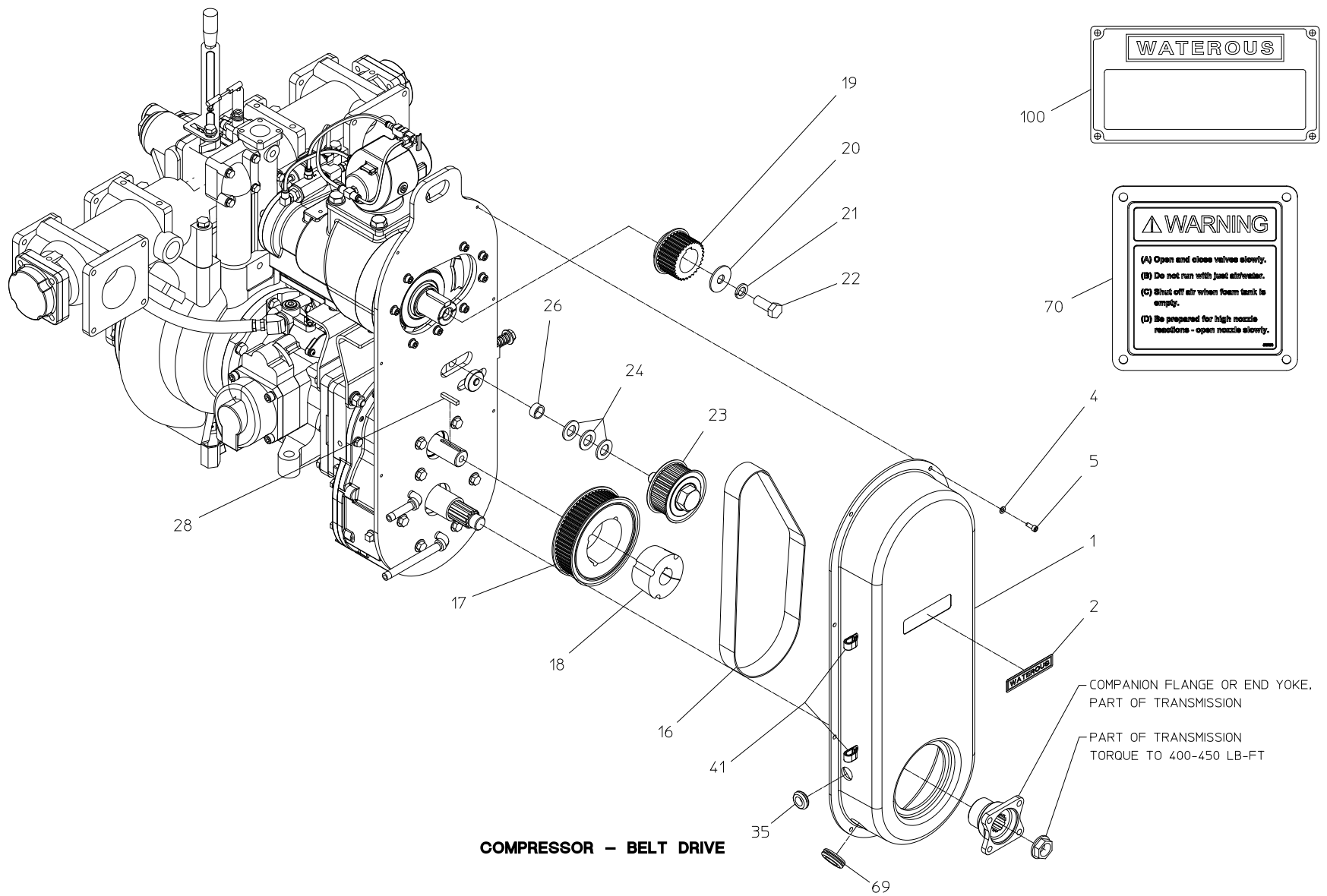


Component		See Page	
		Non-High Rise Configuration	High Rise Configuration
Compressor	Belt Drive	2, 3	2, 3
	Mounting on Pump	4, 5	4, 5
	Air End	6, 7	8, 9
	Air Inlet	10, 11	10, 11
	Auto-Sync (High Rise Only)	-	12, 13
Separator Filter		14, 15	14, 15
Sump		16, 17	16, 17
Oil Cooler, Filter and Strainer		18, 19	18, 19
Schematic	Air Circuit	20, 21	22, 23
	Hydraulic	24, 25	24, 25
	Electrical	See Foam Generator Service Parts List	
Water Pump		See Pump and Transmission Service Parts Lists	
Hose and Fitting Kit		Optional from Waterous, See Service Parts Lists SPL83368	

Compressor – Belt Drive

REF NO.	DESCRIPTION
1	Belt Cover
2	Waterous Decal
4	Flat Washer, 6mm
5	Socket Head Screw, M6-1.00 x 16mm
16	Poly Chain Belt, 130 Tooth x 36mm
17	Drive Sprocket, 63 Groove
18	Taper Lock Bushing, 1-1/4 x 2517
19	Driven Sprocket, 30 Groove
20	Large Diameter Washer, 16mm

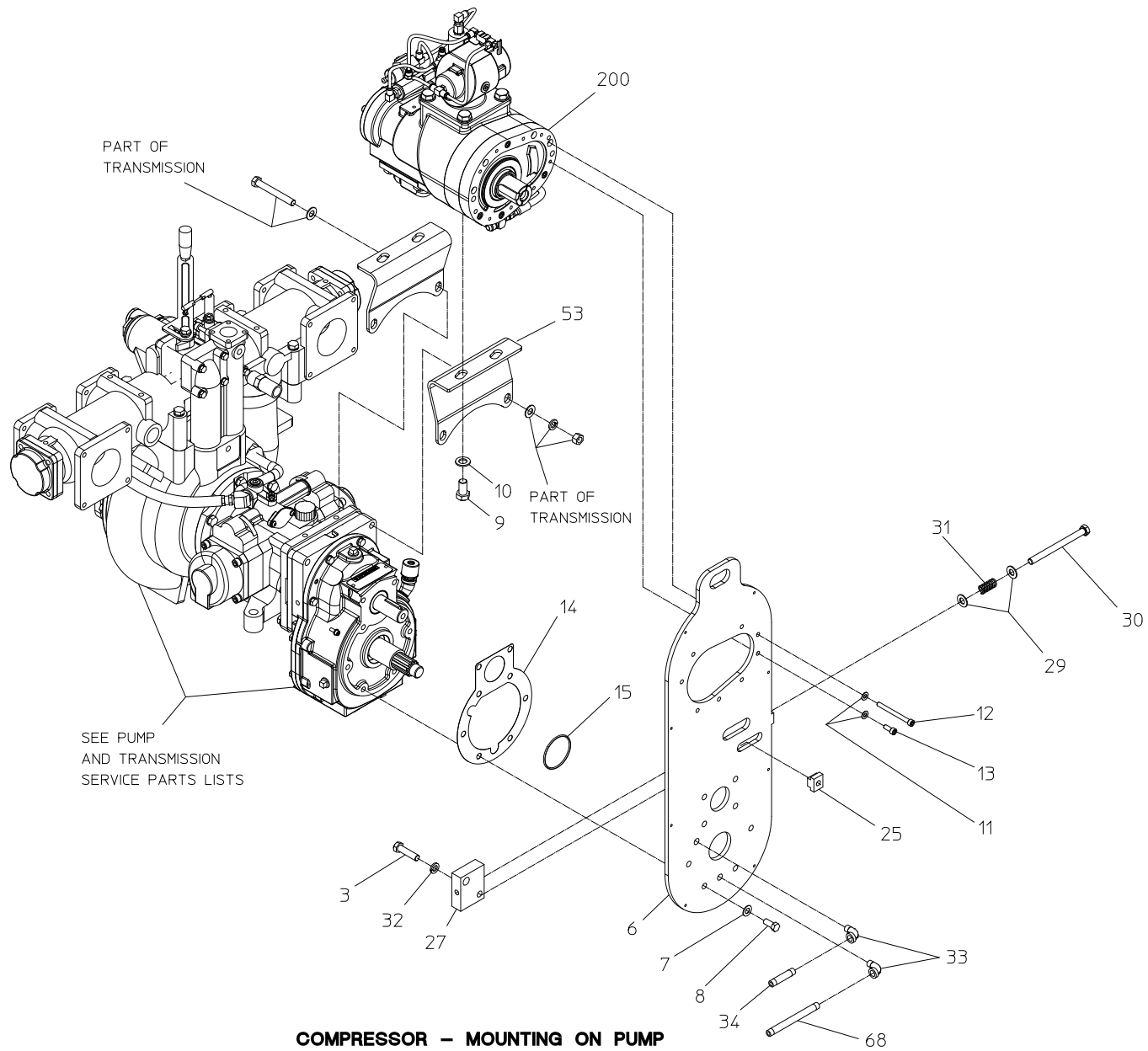
REF NO.	DESCRIPTION
21	Lock Washer, 16mm
22	Hex Head Screw, M16-2.0 x 40mm
23	Idler Sprocket, 36mm
24	Plain Washer, 3/4
26	Belt Tensioner Block Spacer
28	Square Key, 1/4 x 1-1/2
35	Grommet, 11/16 x 1 x 1/8
41	Hose Clamp
69	Grommet, 1 x 1-3/4 x 1/8



Compressor – Mounting on Pump

REF NO.	DESCRIPTION
3	Hex Head Screw, 1/2-20 x 2
6	Vertical Compressor Plate
7	Plain Washer, 7/16
8	Hex Head Screw, 7/16-14 x 1
9	Hex Head Screw, M16-1.0 x 30mm
10	Flat Washer, 16mm
11	Flat Washer, 8mm
12	Socket Head Screw, M8-1.25 x 90mm
13	Socket Head Screw, M8-1.25 x 20mm
14	Cooling Plate Gasket
15	O-ring, 2-3/4 x 3 in.
25	T-Slot Nut

REF NO.	DESCRIPTION
27	Belt Tensioner Block
29	Plain Washer, 1/2
30	Hex Head Screw, 1/2-13 x 6
31	Belt Tensioner Spring
32	Lock Washer, 1/2
33	Street Elbow, 90 Deg. x 1/4 NPT
34	Pipe Nipple, 1/4 NPT x 2-1/2
53	Compressor Mounting Bracket
68	Pipe Nipple, 1/4 NPT x 5-1/2
70	CAFS Warning Plate
100	Serial Plate
200	Compressor Subassembly



Compressor – Air End Non-High Rise Configuration

REF NO.	DESCRIPTION
63	Black Air Brake Tube, 1/4 in. (Cut to Length)
71	Street Elbow, 90 Deg., 1-1/2 NPT
72	Adapter, 45 Deg., 24 MJIC x 1-1/2 MNPT
200	Compressor Subassembly (Includes 201-238 and 900)
201	90 Degree Air Inlet, 2-1/2 in.
202	Reducing Bushing, 1/4 MNPT x 1/8 FNPT
203	Male Branch Tee, 1/8 MNPT x 1/8 FNPT x 1/8 FNPT
204	Trim Valve, 1/8 MNPT x 1/4 AB
205	Elbow, 90 Deg., 1/8 MNPT x 1/4 AB
206	Elbow, 90 Deg., 1/4 MNPT x 1/4 AB
207	Male Branch Tee, 1/4 MNPT x 1/4 AB x 1/4 AB
214	Straight Adapter, 4 MJIC x 12mm
217	Oil Injection Hose Assembly (Straight x 90 Degrees)
218	Oil Return Fitting, 8 MJIC x 8 FJIC x 4 MJIC (90 Degrees)
222	Air Outlet Gasket
223	Oil Injection Fitting, 8 MJIC x M22-1.5
224	Outlet Flange, 1-1/2 FNPT
227	Air End, CF75D8
228	Red Air Brake Tube, 1/4 in. (Cut to Length)
229	Blue Air Brake Tube, 1/4 in. (Cut to Length)

REF NO.	DESCRIPTION
230	Green Air Brake Tube, 1/4 in. (Cut to Length)
231	Compressor Replacement Kit
232	O-ring, 3-7/8 x 4-1/4 in.
235	Hex Head Screw, M16-2.0 x 30mm
237	Flat Washer, 8mm
238	Flat Washer, 16mm
241	Internal Support Sleeve
900	PMC Subassembly (Includes 901-914)
901	Pressure Regulator
902	Blowdown Valve
903	PMC Mounting Bracket
904	Straight Adapter, 1/4 MNPT x 1/4 AB
905	90 Degree Elbow, 1/4 MNPT x 1/4 AB
907	AB Branch Tee, 1/4 AB x 1/4 MNPT x 1/4 AB
908	Flat Washer, 3/8 in.
909	Hex Head Screw, 3/8-16 x 1/2 in.
910	Solenoid Valve
911	Pipe Nipple, 1/4 NPT x 7/8 in.
912	Tee, 1/4 FNPT
914	Street Tee, 1/4 NPT

COMPRESSOR
SUB-ASSY

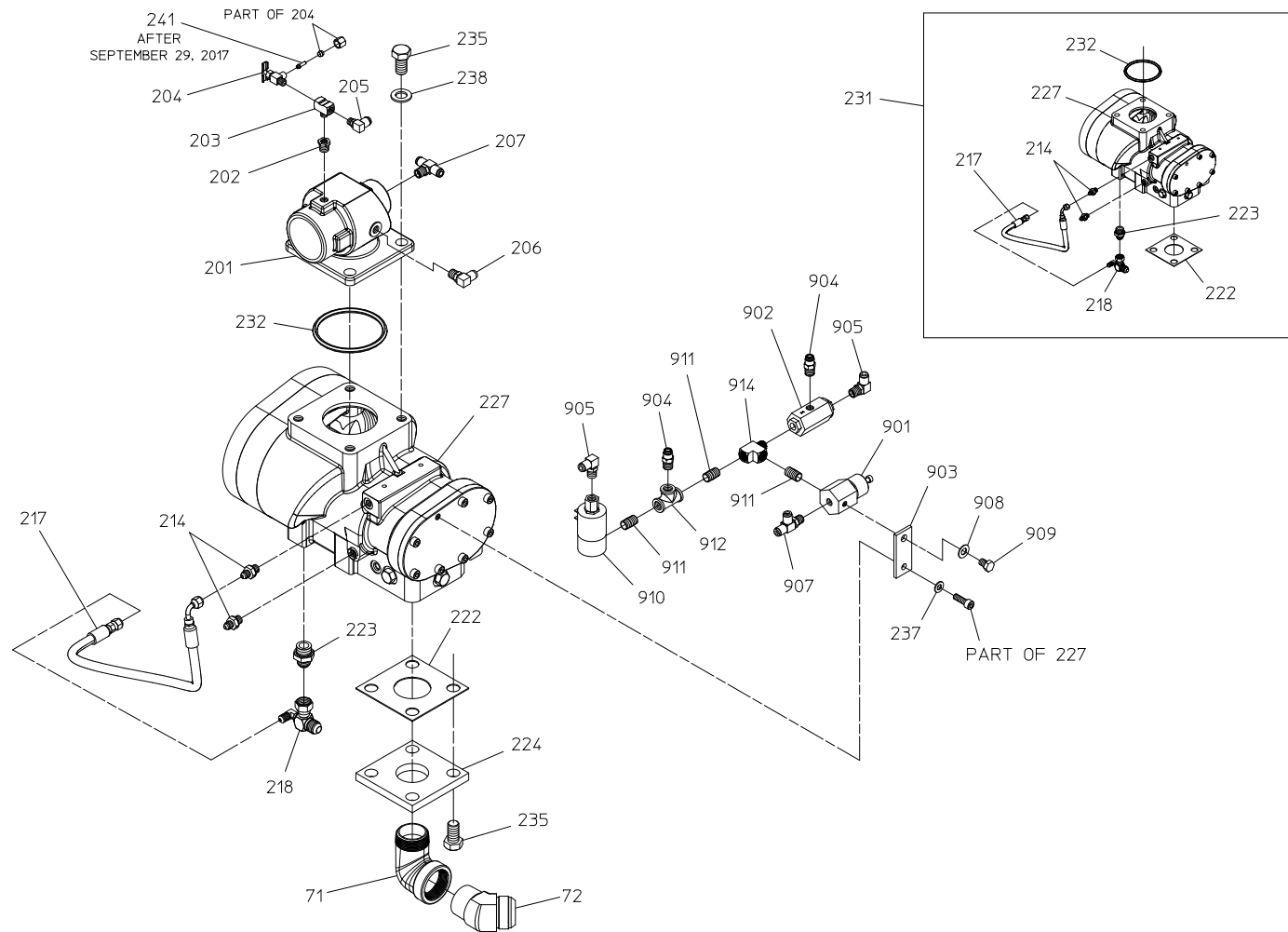
200
(INCLUDES 201-238
AND 900)

PMC
SUB-ASSY

900
(INCLUDES 901-914)

63 - BLACK TUBING
228 - RED TUBING
229 - BLUE TUBING
230 - GREEN TUBING

SEE AIR SCHEMATIC



COMPRESSOR - AIR END
NON-HIGH RISE CONFIGURATION

Compressor – Air End High Rise Configuration

REF NO.	DESCRIPTION
63	Black Air Brake Tube, 1/4 in. (Cut to Length)
64	Red Air Brake Tube, 1/4 in. (Cut to Length)
65	Yellow Air Brake Tube, 1/4 in. (Cut to Length)
71	Street Elbow, 90 Deg., 1-1/2 NPT
72	Adapter, 45 Deg., 24 MJIC x 1-1/2 MNPT
200	Compressor Subassembly (Includes 201-240 and 900)
201	90 Degree Air Inlet, 2-1/2 in.
202	Reducing Bushing, 1/4 MNPT x 1/8 FNPT
203	Male Branch Tee, 1/8 MNPT x 1/8 FNPT x 1/8 FNPT
204	Trim Valve, 1/8 MNPT x 1/4 AB
205	90 Deg. Elbow, 1/8 MNPT x 1/4 AB
206	90 Deg. Elbow, 1/4 MNPT x 1/4 AB
207	Male Branch Tee, 1/4 MNPT x 1/4 AB x 1/4 AB
214	Straight Adapter, 4 MJIC x 12mm
217	Oil Injection Hose Assembly (Straight x 90 Degrees)
218	Oil Return Fitting, 8 MJIC x 8 FJIC x 4 MJIC (90 Degrees)
222	Air Outlet Gasket
223	Oil Injection Fitting, 8 MJIC x M22-1.5
224	Outlet Flange, 1-1/2 FNPT
227	Air End, CF75D8
228	Red Air Brake Tube, 1/4 in. (Cut to Length)

REF NO.	DESCRIPTION
229	Blue Air Brake Tube, 1/4 in. (Cut to Length)
230	Green Air Brake Tube, 1/4 in. (Cut to Length)
231	Compressor Replacement Kit
232	O-ring, 3-7/8 x 4-1/4 in.
235	Hex Head Screw, M16-2.0 x 30mm
237	Flat Washer, 8mm
238	Flat Washer, 16mm
240	Black Air Brake Tube, 1/4 in. (Cut to Length)
241	Internal Support Sleeve
900	PMC Subassembly (Includes 901-914)
901	Pressure Regulator
902	Blowdown Valve
903	PMC Mounting Bracket
904	Straight Adapter, 1/4 MNPT x 1/4 AB
905	90 Degree Elbow, 1/4 MNPT x 1/4 AB
907	AB Branch Tee, 1/4 AB x 1/4 MNPT x 1/4 AB
908	Flat Washer, 3/8 in.
909	Hex Head Screw, 3/8-16 x 1/2 in.
911	Pipe Nipple, 1/4 NPT x 7/8 in.
914	Street Tee, 1/4 NPT

COMPRESSOR
SUB-ASSY

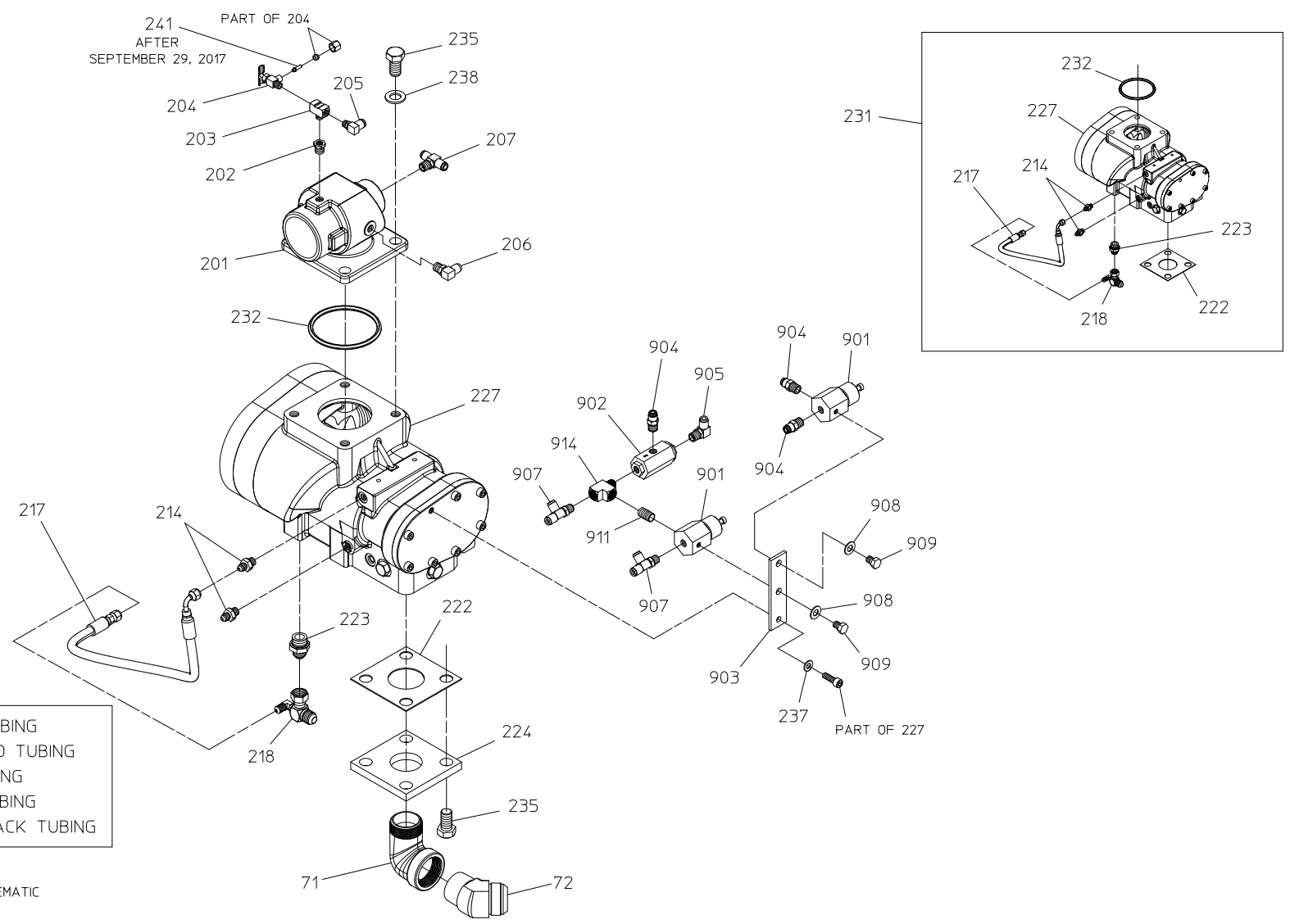
200
(INCLUDES 201-240
AND 900)

PMC
SUB-ASSY

900
(INCLUDES 901-914)

65 - YELLOW TUBING
64 OR 228 - RED TUBING
229 - BLUE TUBING
230 - GREEN TUBING
63 OR 240 - BLACK TUBING

SEE AIR SCHEMATIC

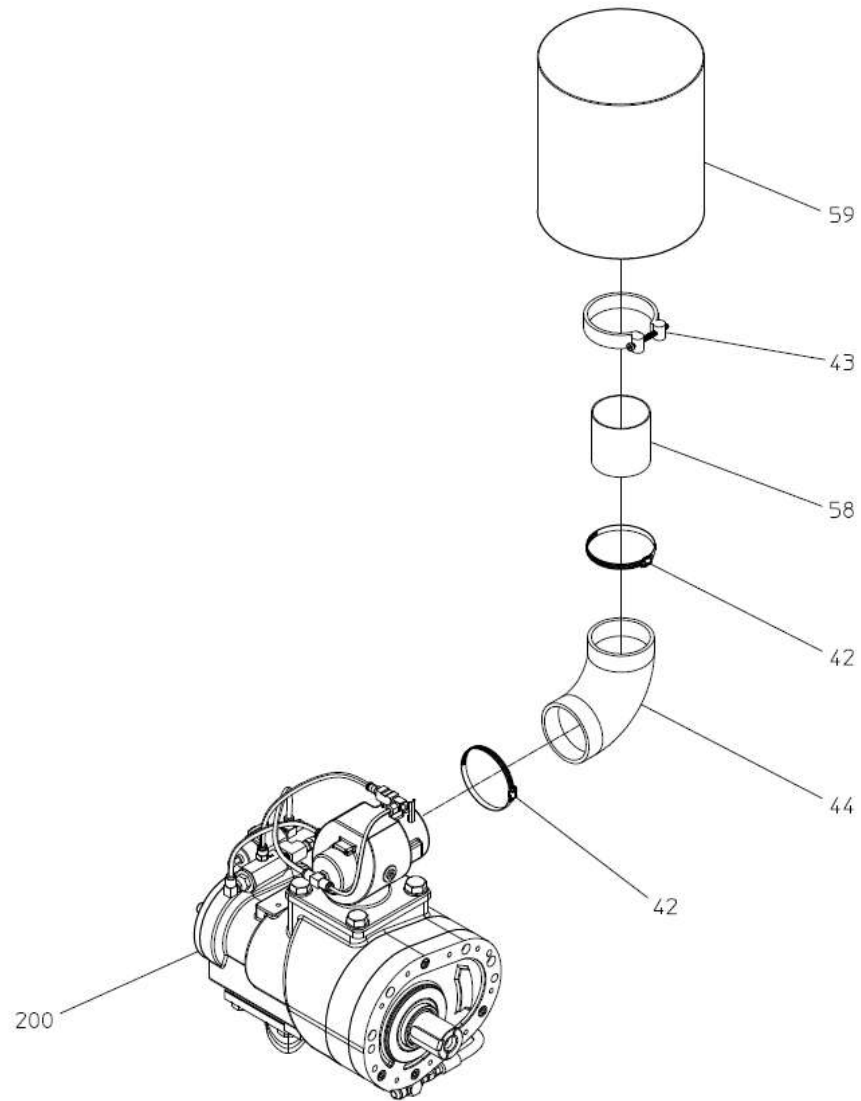


COMPRESSOR - AIR END
HIGH RISE CONFIGURATION

Compressor – Air Inlet

REF NO.	DESCRIPTION
42	Hose Clamp, 3-3/4 in.
43	T-Bolt Hose Clamp, 3-1/2 in.
44	90 Deg. Elbow, 3 in. (Rubber)

REF NO.	DESCRIPTION
58	Air Inlet Tube, 3 in. x 48 in.
59	Air Filter
200	Compressor Subassembly



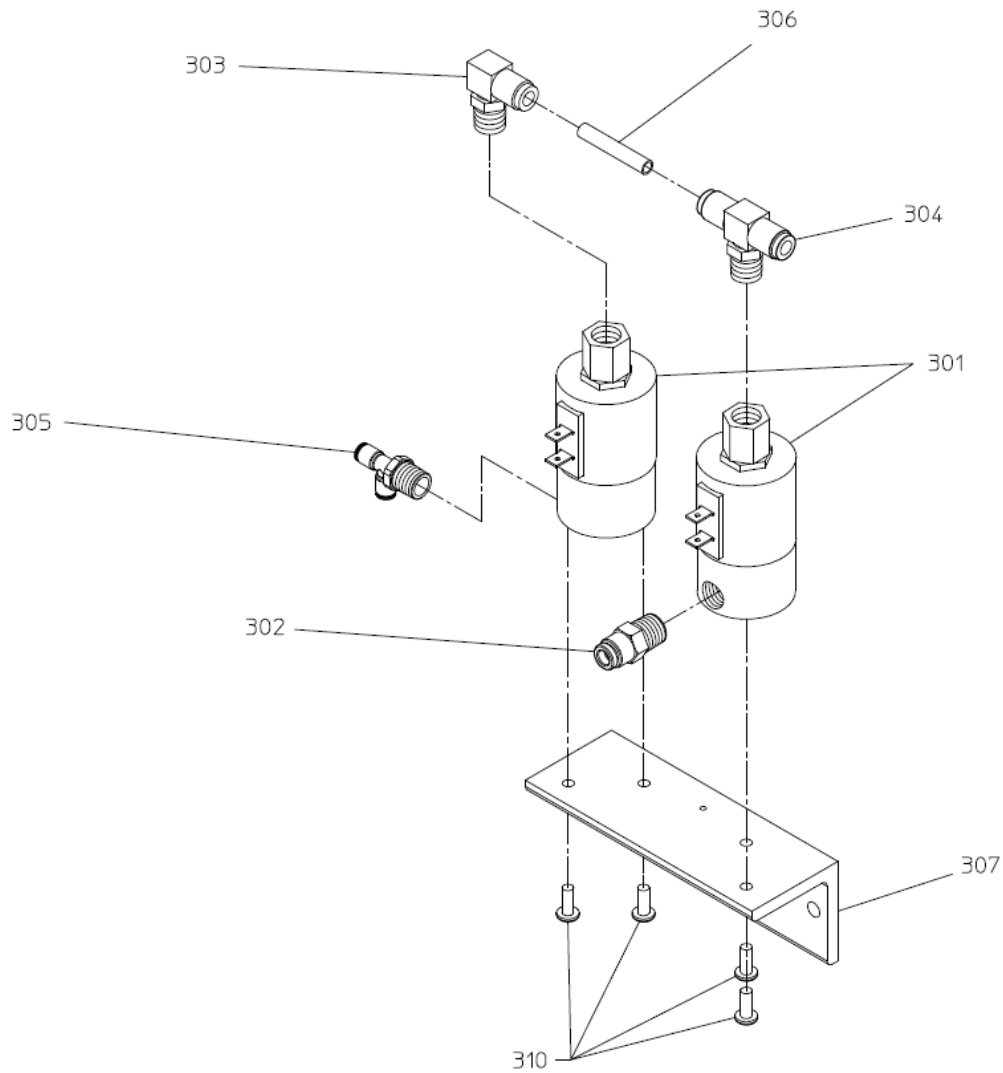
COMPRESSOR — AIR INLET

NOTE: BASED ON INSTALLATION. CONFIGURATION MAY VARY FROM DIAGRAM

**Compressor – Auto-Sync
Used on High Rise Configuration**

REF NO.	DESCRIPTION
300	Auto-Sync Subassembly (Includes 301-310)
301	Solenoid Valve
302	Straight Adapter, 1/4 MNPT x 1/4 AB
303	90 Deg. Elbow, 1/4 MNPT x 1/4 AB
304	Male Branch Tee, 1/4 AB x 1/4 MNPT x 1/4 AB

REF NO.	DESCRIPTION
305	AB Branch Tee, 1/4 AB x 1/4 MNPT x 1/4 AB
306	Red Air Brake Tube, 1/4 in. (Cut to Length)
307	Angle Solenoid Bracket
310	Pan Head Screw, No. 10-32 x 1/2 in.



AUTO-SYNC
SUB-ASSY

300
(INCLUDES 301-310)

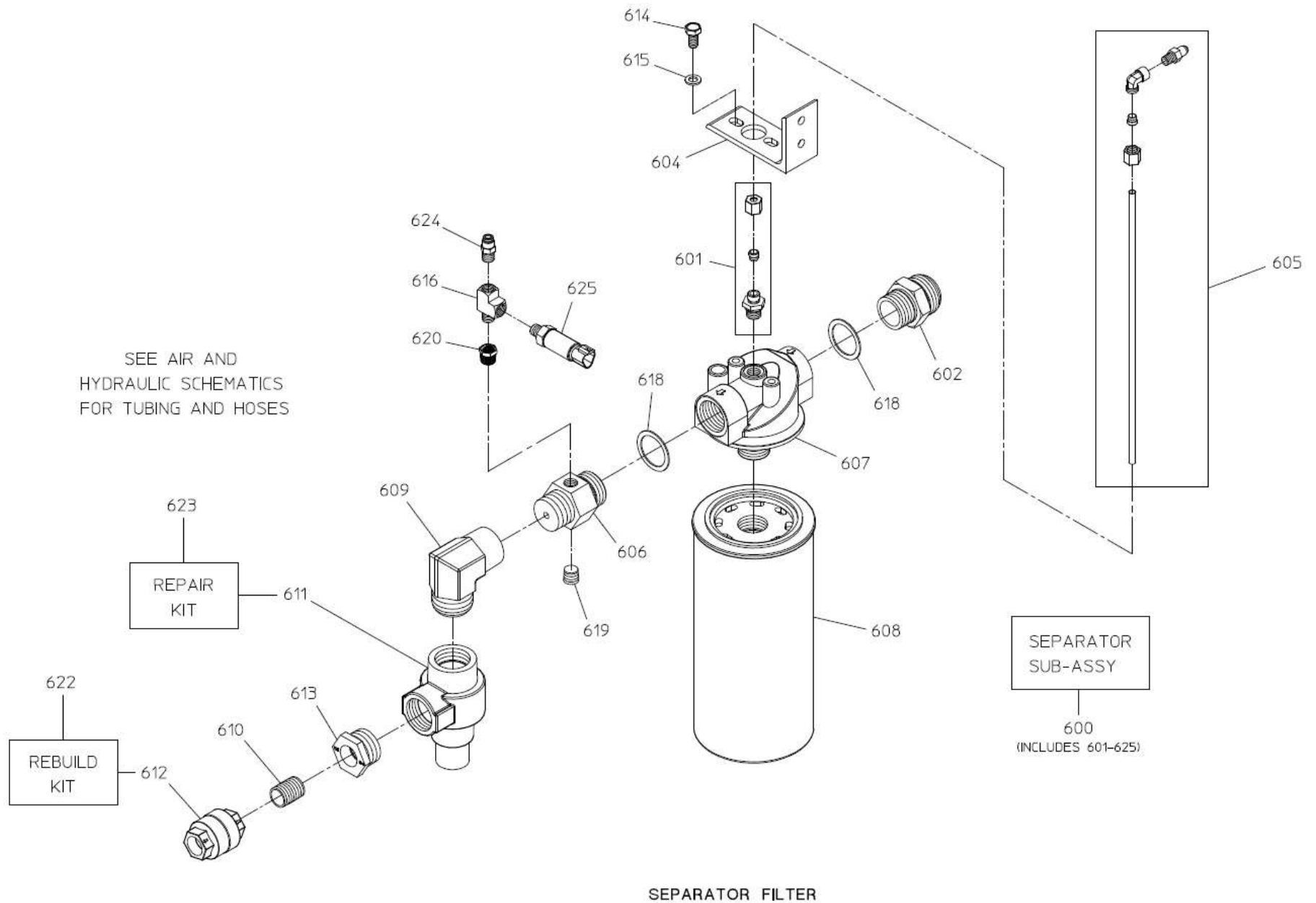
SEE HIGH RISE
AIR SCHEMATIC
FOR TUBING

COMPRESSOR AUTO-SYNC
USED ON HIGH RISE CONFIGURATION ONLY

Separator Filter

REF NO.	DESCRIPTION
600	Separator Subassembly (Includes 601-625)
601	Scavenger Fitting (Includes Ferrule and Nut)
602	Straight Adapter, 24 MJIC x 1-1/4 BSP
604	Large Separator Bracket
605	Scavenger Tube Assembly (Includes Ferrule and Nut)
606	Restrictor Fitting, 140 / 5/16 in.
607	Large Filter Head
608	Large Separator Filter
609	90 Degree Street Elbow, 1-1/4 NPT
610	Close Nipple, 3/4 in.
611	Minimum Pressure Control Valve, 1-1/4 in.

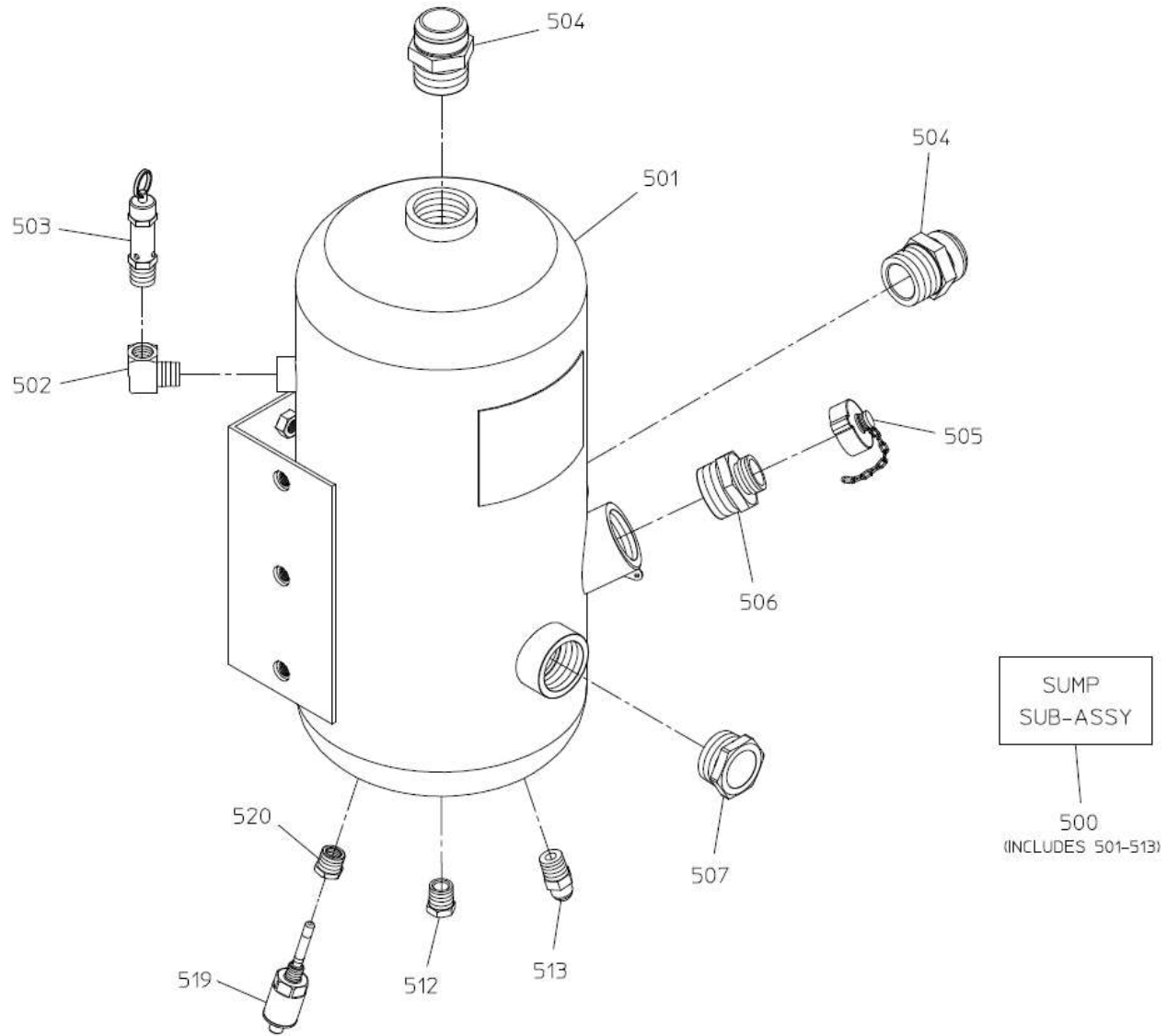
REF NO.	DESCRIPTION
612	Check Valve, 3/4
613	Reducing Bushing, 1-1/4 NPT x 3/4 in. NPT
614	Hex Head Screw, M10-1.5 x 20mm
615	Flat Washer, 10mm
616	Tee, 1/4 FNPT x 1/4 MNPT x 1/4 FNPT
618	Copper Washer, 1.928 in. OD
619	Headless Pipe Plug, 3/8 in. NPT
620	Reducing Bushing, 3/8 MNPT x 1/4 FNPT
622	Check Valve Rebuild Kit
623	Minimum Pressure Control Valve Repair Kit
624	Straight Adapter, 1/4 MNPT x 1/4 AB
625	Pressure Transducer



Sump

REF NO.	DESCRIPTION
500	Sump Subassembly (Includes 501-513)
501	Vertical Sump, 10 in.
502	90 Degree Street Elbow, 1/2 NPT
503	Pop Off Valve, 1/2 in.
504	Straight Adapter, 24 MJIC x 1-1/2 MNPT
505	Cap with Chain, 1 in. NPSH

REF NO.	DESCRIPTION
506	Nipple, 1-1/2 in. NPT x 1 in. NPSH
507	Sight Glass, 1-1/2 in.
512	Hex Head Plug, 1/2 NPT
513	Straight Adapter, 1/2 MNPT x 8 MJIC
519	Temperature Sender
520	Reducing Bushing, 1/2 MNPT x 1/4 FNPT



SEE HYDRAULIC
SCHEMATIC FOR HOSES

SUMP

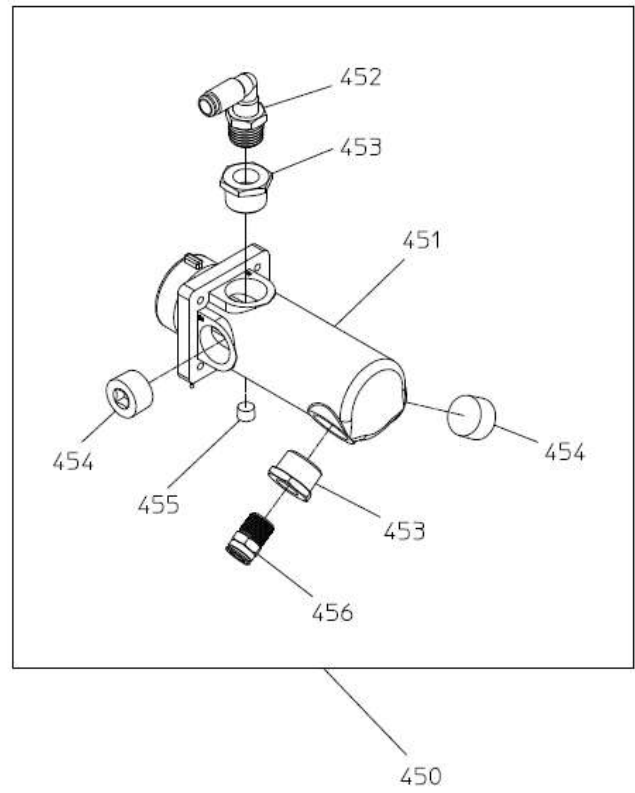
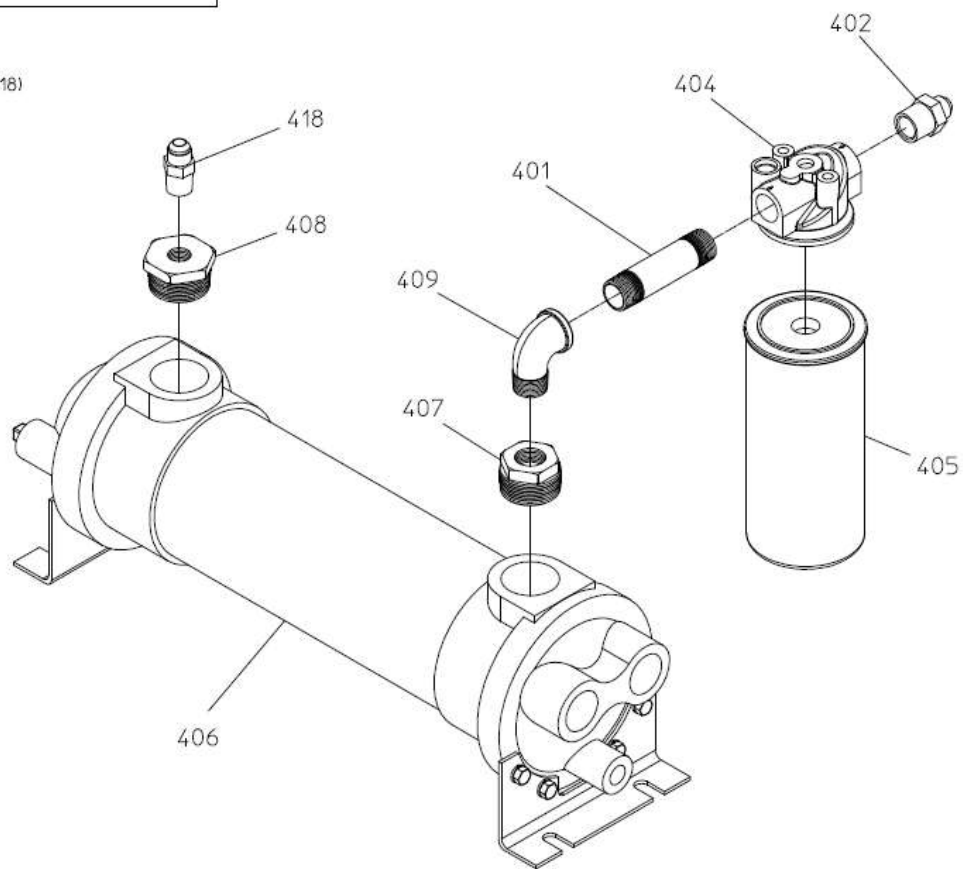
Oil Cooler, Filter and Water Strainer

REF NO.	DESCRIPTION
400	Oil Cooler Subassembly (Includes 401-418)
401	Pipe Nipple, 3/4 NPT x 4 in.
402	Straight Adapter, 8 MJIC x 3/4 MNPT
404	Large Filter Head
405	Oil Filter, WD962
406	Large Cooler (Includes Brackets and Pipe Plugs)
407	Reducing Bushing, 1-1/2 NPT x 3/4 NPT
408	Reducing Bushing, 1-1/2 NPT x 1/2 NPT
409	Street Elbow, 90 Deg., 3/4 NPT

REF NO.	DESCRIPTION
418	Straight Adapter, 8 MJIC x 1/2 MNPT
450	Panel Strainer Subassembly (Includes 451-456)
451	Panel Mounted Strainer, 20 Mesh
452	90 Deg., Elbow, 1/2 MNPT x 1/2 AB
453	Reducing Bushing, 1 MNPT x 1/2 FNPT
454	Headless Plug, 1 NPT
455	Headless Plug, 1/4 NPT
456	Straight Adapter, 1/2 MNPT x 1/2 AB

OIL COOLER
SUB-ASS'Y

400
(INCLUDES 401-418)

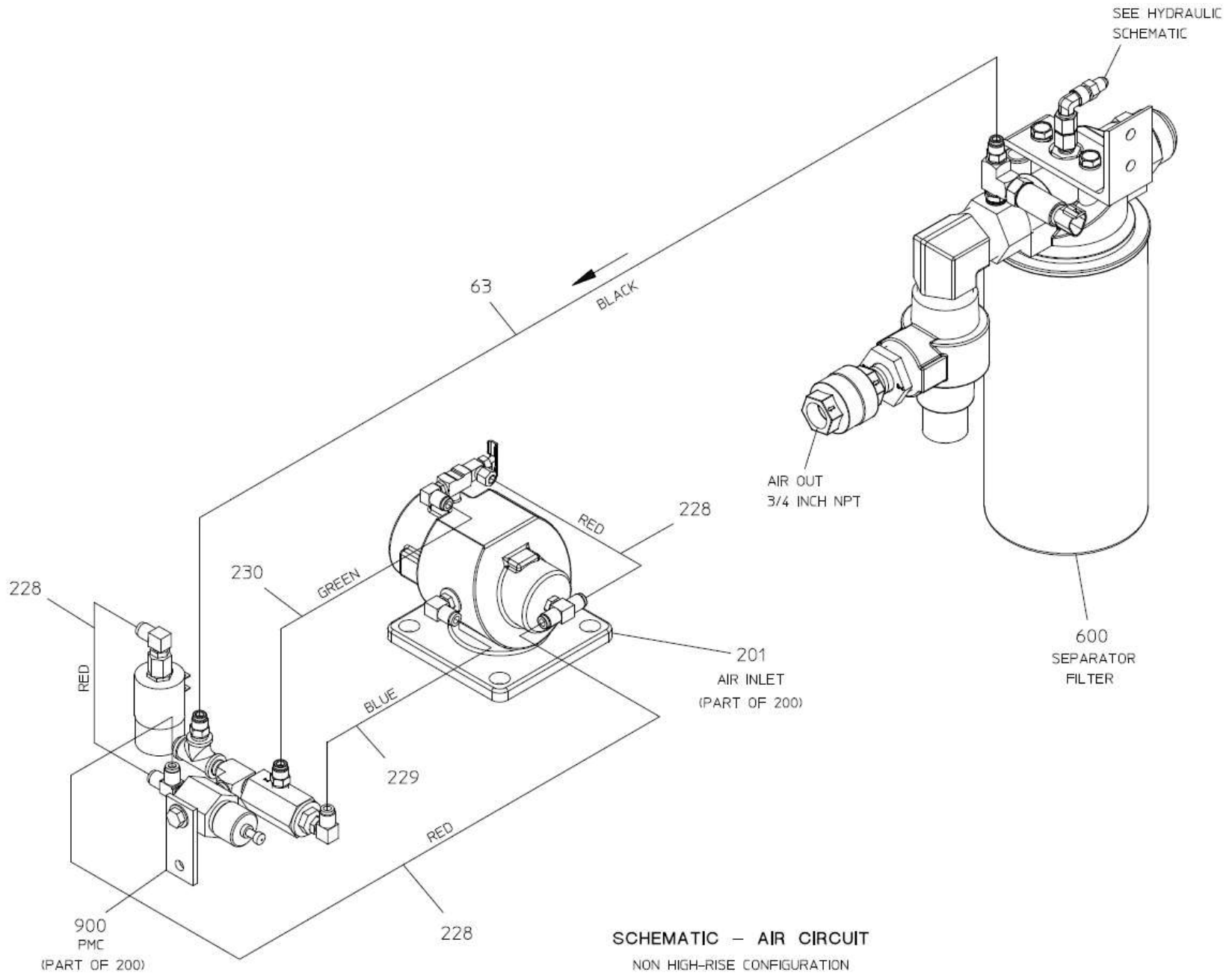


OIL COOLER, FILTER AND WATER STRAINER

Schematic – Air Circuit
Non-High Rise Configuration

REF NO.	DESCRIPTION
63	Black Air Brake Tube, 1/4 in. (Cut to Length)
201	90 Deg. Air Inlet, 2-1/2 in.
228	Red Air Brake Tube, 1/4 in. (Cut to Length)
229	Blue Air Brake Tube, 1/4 in. (Cut to Length)

REF NO.	DESCRIPTION
230	Green Air Brake Tube, 1/4 in. (Cut to Length)
600	Separator Subassembly
900	PMC Subassembly

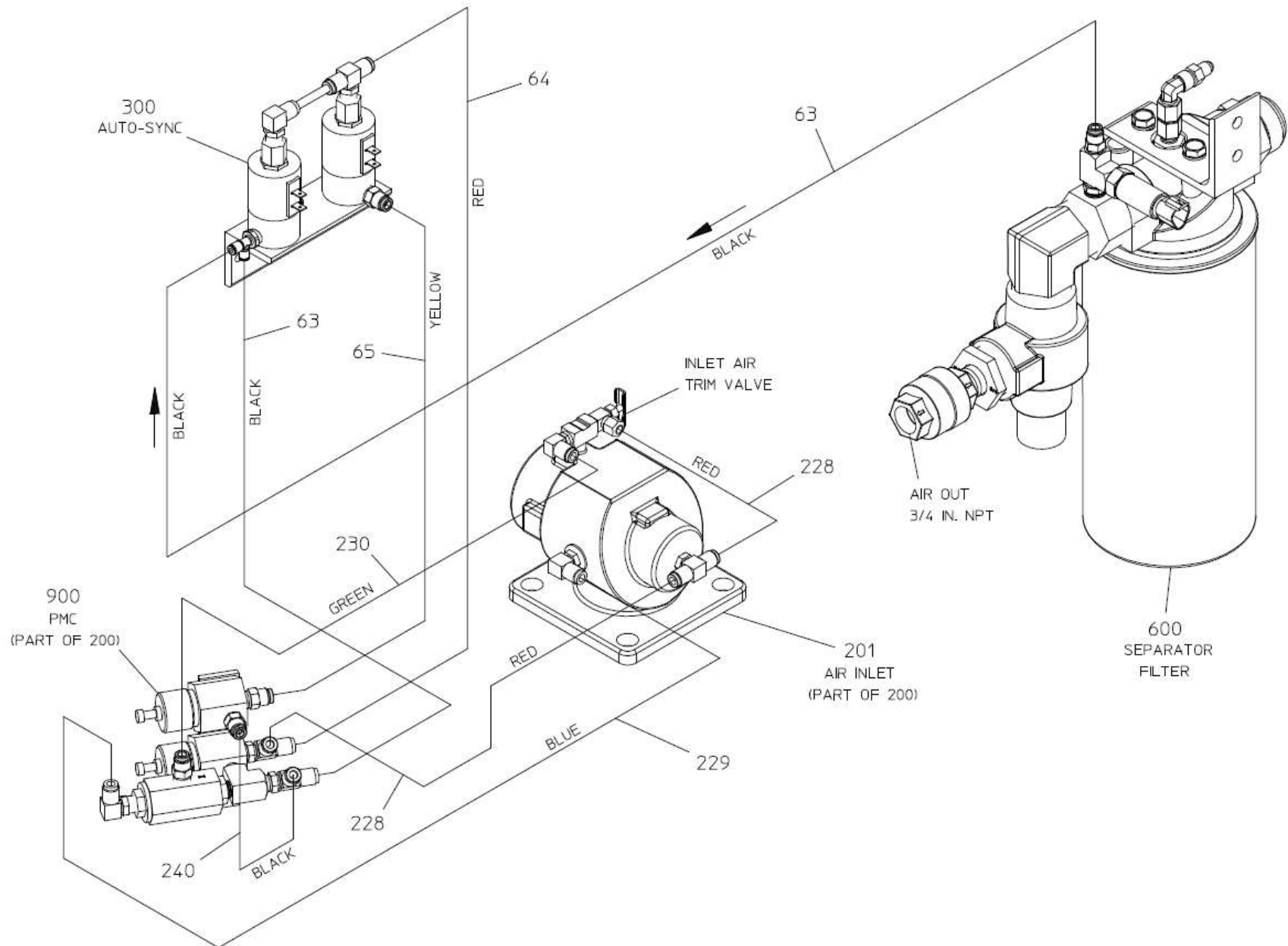


SCHEMATIC – AIR CIRCUIT
NON HIGH-RISE CONFIGURATION

Schematic – Air Circuit High Rise Configuration

REF NO.	DESCRIPTION
63	Black Air Brake Tube, 1/4 in. (Cut to Length)
64	Red Air Brake Tube, 1/4 in. (Cut to Length)
65	Yellow Air Brake Tube, 1/4 in. (Cut to Length)
201	90 Degree Air Inlet, 2-1/2 in.
228	Red Air Brake Tube, 1/4 in. (Cut to Length)
229	Blue Air Brake Tube, 1/4 in. (Cut to Length)

REF NO.	DESCRIPTION
230	Green Air Brake Tube, 1/4 in. (Cut to Length)
240	Black Air Brake Tube, 1/4 in. (Cut to Length)
300	Auto-Sync Subassembly
600	Separator Subassembly
900	PMC Subassembly



SCHEMATIC – AIR
HIGH RISE CONFIGURATION

Schematic - Hydraulic

REF NO.	DESCRIPTION
62	Check Valve, 1/2 in.
200	Compressor Subassembly
400	Oil Cooler Subassembly

REF NO.	DESCRIPTION
450	Panel Strainer Subassembly
500	Sump Subassembly
600	Separator Subassembly

