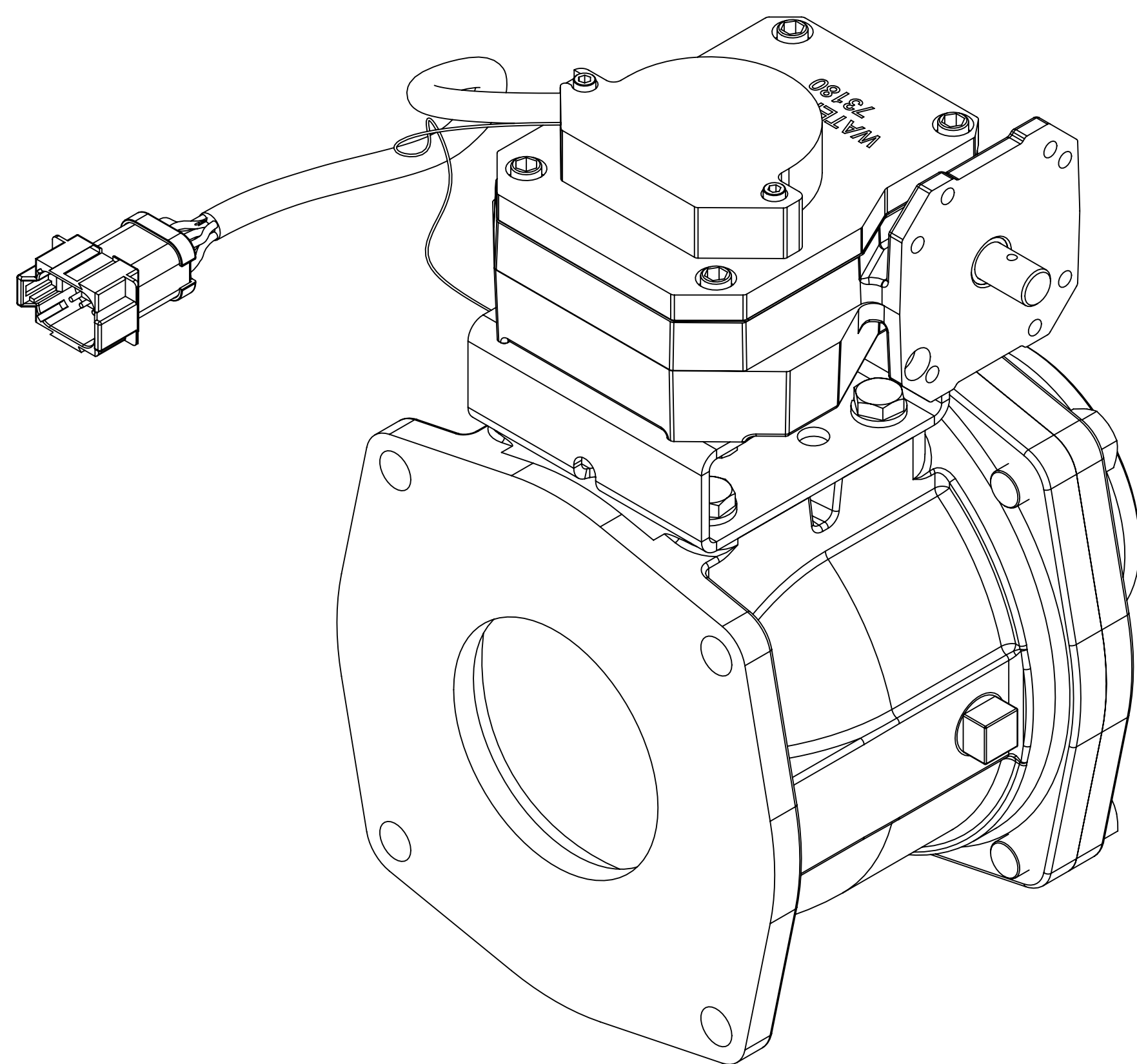
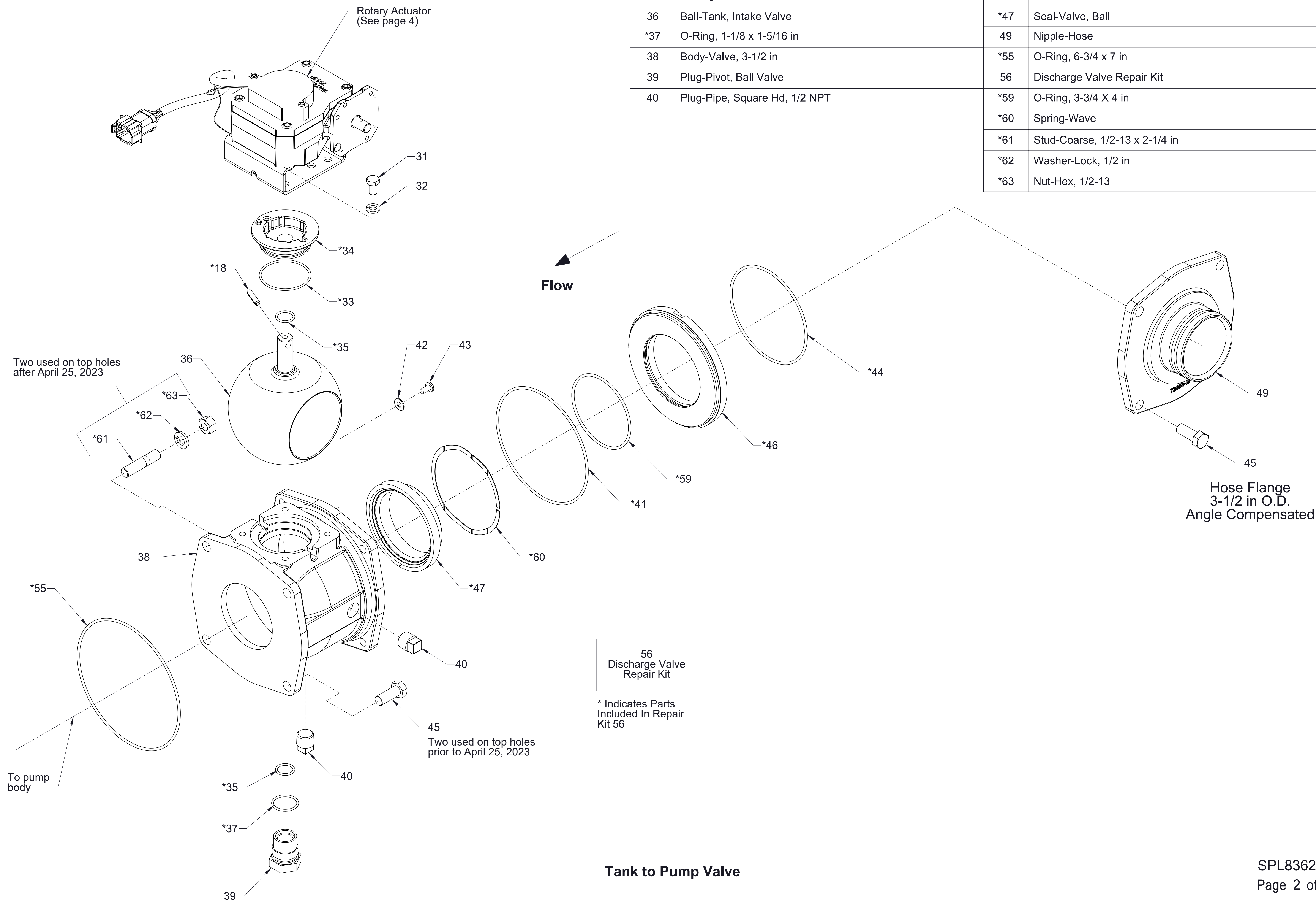


Tank to Pump Valve with Manual Rotary Actuator
Service Parts List

Components	See Page
Tank to Pump Valve	2
Cables and Panel Components	3
Available Repair Subassemblies	4



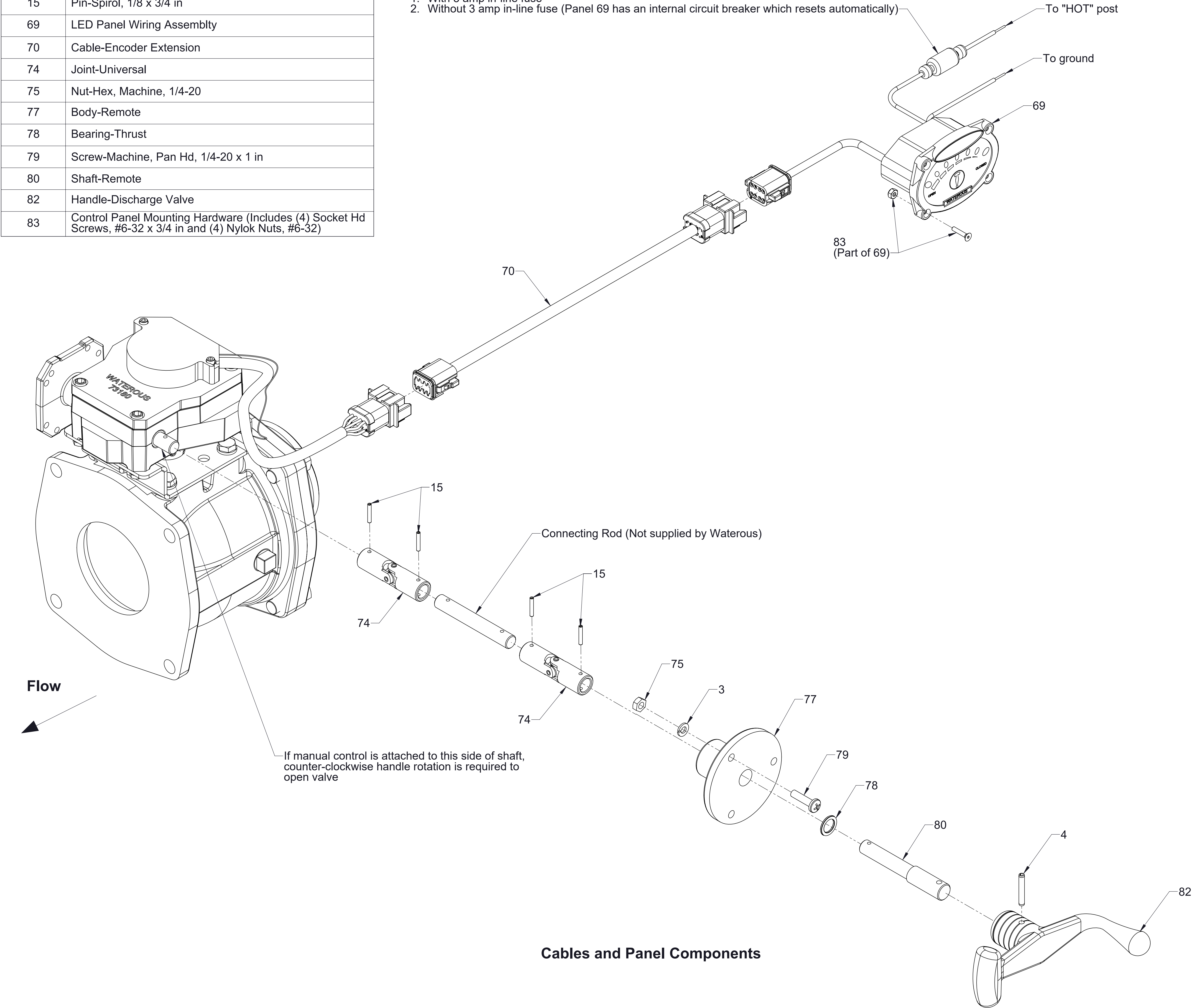
Ref No.	Description	Ref No.	Description
*18	Pin-Spring, 1/4 x 1-1/8 in	*41	O-Ring, 6 x 6-1/4 in
31	Screw-Hex Hd, 3/8-16 x 5/8 in	42	Washer-Plain, 1/4 in
32	Washer-Lock, 3/8 in	43	Screw-Machine, Pan Hd, 1/4-20 x 1/2 in
*33	O-Ring, 2-5/16 x 2-1/2 in	*44	O-Ring, 5 x 5-1/4 in
*34	Bushing-Upper	45	Screw-Hex Hd, 1/2-13 x 1-1/4 in
*35	O-Ring, 3/4 x 15/16 in	*46	Retainer-Seal
36	Ball-Tank, Intake Valve	*47	Seal-Valve, Ball
*37	O-Ring, 1-1/8 x 1-5/16 in	49	Nipple-Hose
38	Body-Valve, 3-1/2 in	*55	O-Ring, 6-3/4 x 7 in
39	Plug-Pivot, Ball Valve	56	Discharge Valve Repair Kit
40	Plug-Pipe, Square Hd, 1/2 NPT	*59	O-Ring, 3-3/4 X 4 in
		*60	Spring-Wave
		*61	Stud-Coarse, 1/2-13 x 2-1/4 in
		*62	Washer-Lock, 1/2 in
		*63	Nut-Hex, 1/2-13



Ref No.	Description
3	Washer-Lock, 1/4 in
4	Pin-Spring, 3/16 x 1 1/4 in
15	Pin-Spirol, 1/8 x 3/4 in
69	LED Panel Wiring Assemblty
70	Cable-Encoder Extension
74	Joint-Universal
75	Nut-Hex, Machine, 1/4-20
77	Body-Remote
78	Bearing-Thrust
79	Screw-Machine, Pan Hd, 1/4-20 x 1 in
80	Shaft-Remote
82	Handle-Discharge Valve
83	Control Panel Mounting Hardware (Includes (4) Socket Hd Screws, #6-32 x 3/4 in and (4) Nylok Nuts, #6-32)

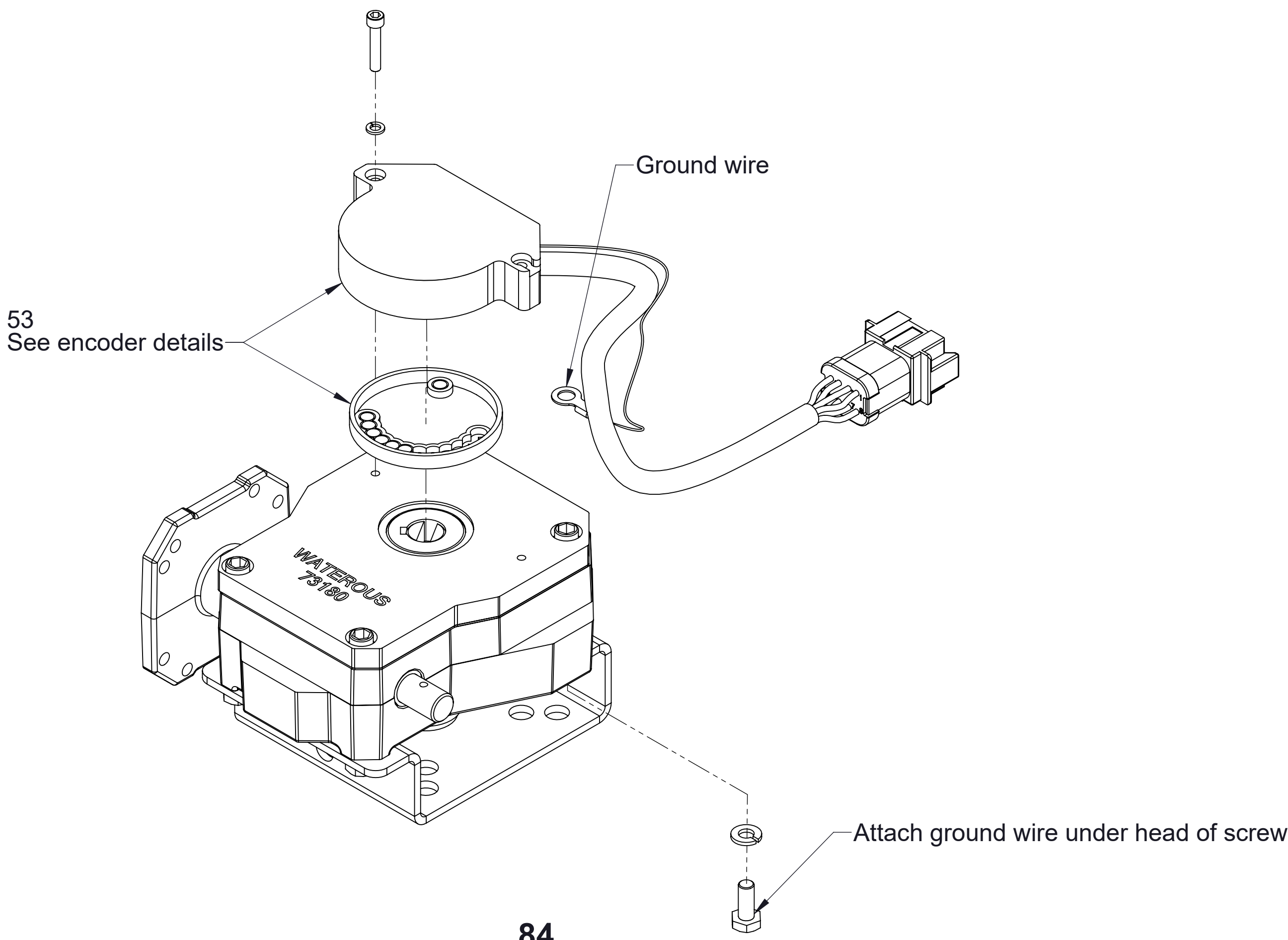
Control panel power wire furnished two ways:

- With 3 amp in-line fuse
- Without 3 amp in-line fuse (Panel 69 has an internal circuit breaker which resets automatically)



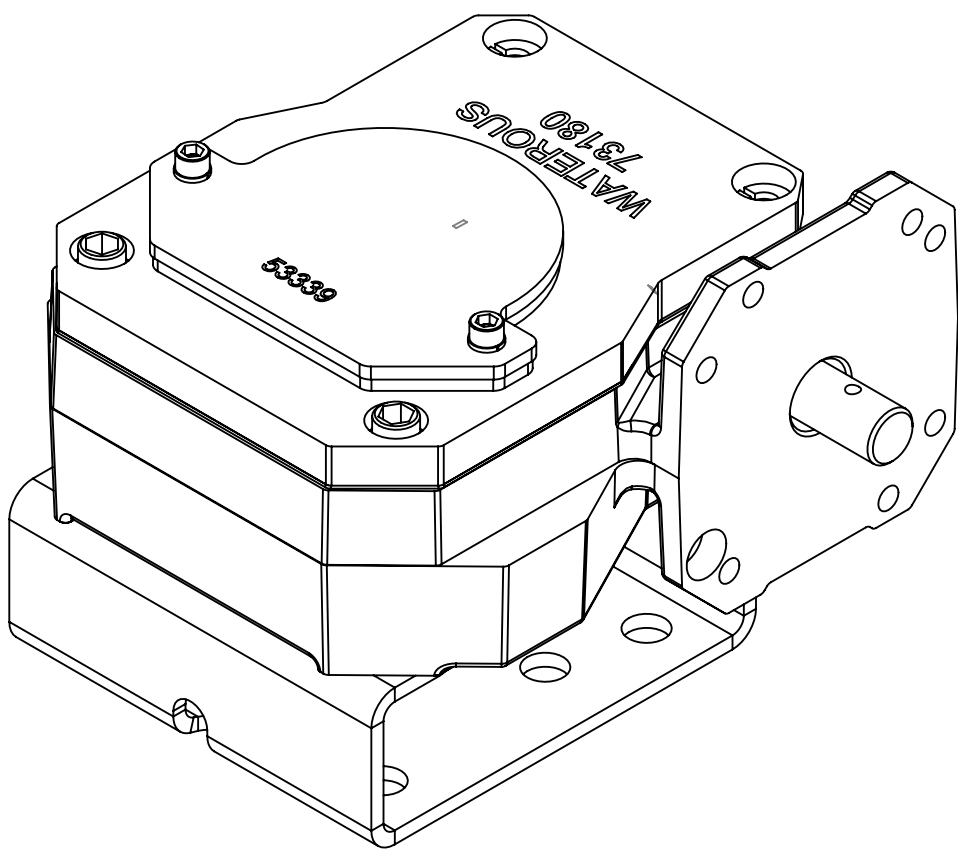
Cables and Panel Components

Ref No.	Description
53	Rotary Encoder Replacement Kit
84	Actuator Subassembly
85	Valve and Actuator Subassembly



84
Actuator Subassembly

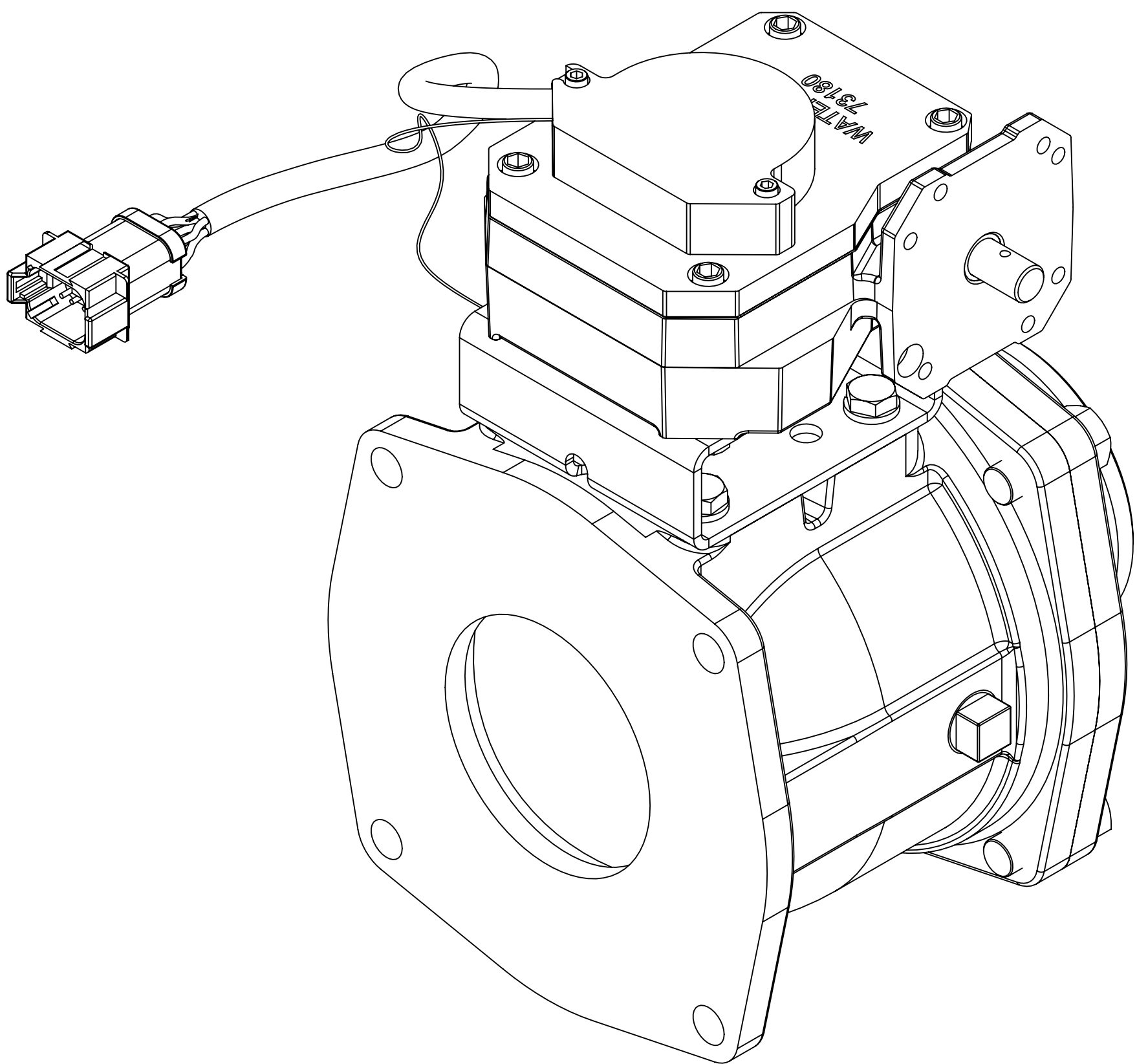
Configuration when optional Waterous control panel is used



84
Actuator Subassembly

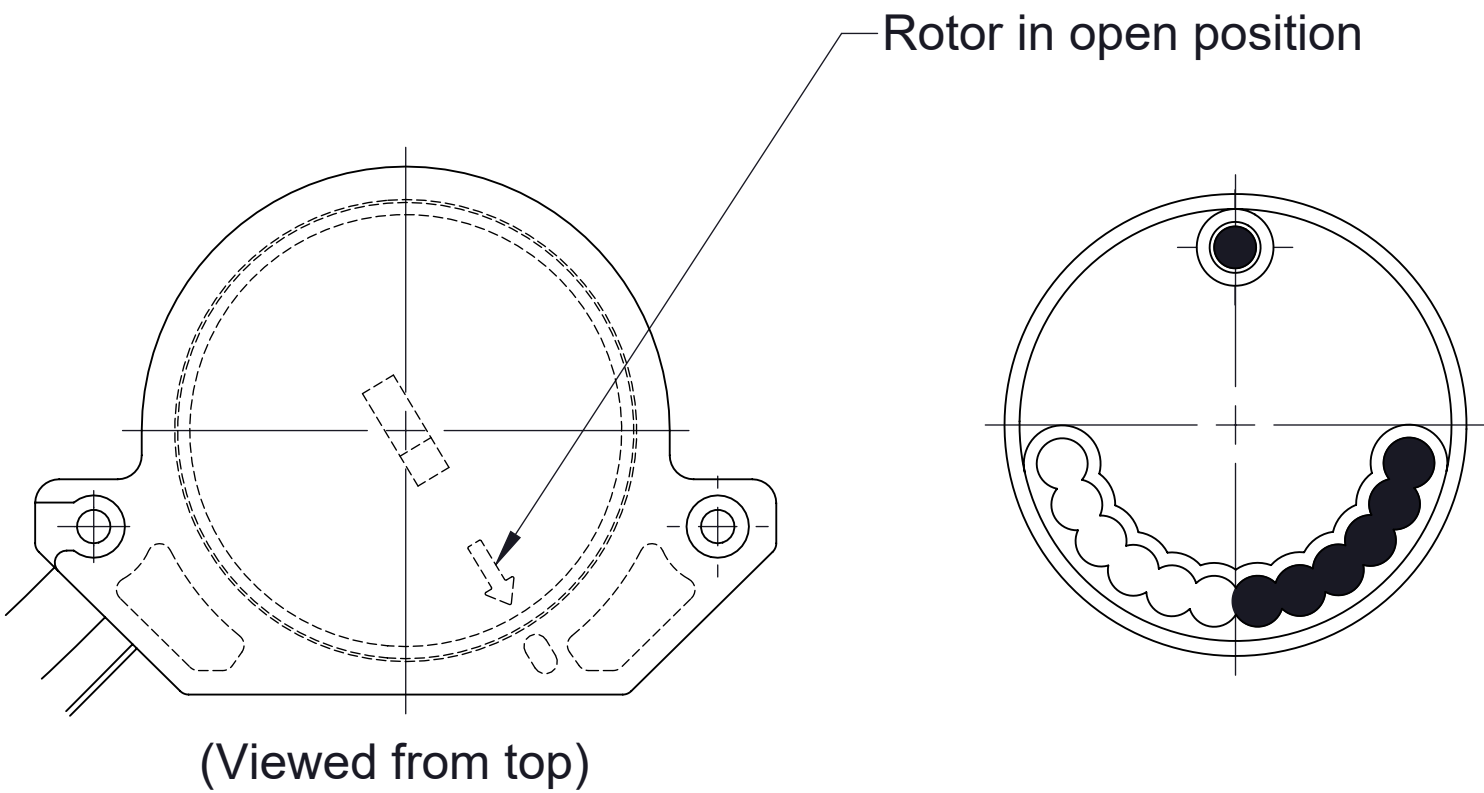
Configuration when optional Waterous control panel is not used

53
Rotary Encoder
Replacement Kit



85
Valve and Actuator Subassembly

Available Repair Subassemblies



Rotor Position **Rotor Magnet Positions**

Encoder Details