



Document Number <b>SPL83632</b>	Issue Date <b>9/28/16</b>	Rev. Date <b>10/29/19</b>
------------------------------------	------------------------------	------------------------------

## Model VPO and VPOS Priming Pump Service Parts List

Configuration as used with VAP Priming Valves

Index:

Priming Pump			Pump Transmission or P.T.O. Model <i>(Located on Serial Plate)</i>				See Page						
Model	Mounting Location		Pump Transmission		P.T.O.		Mounting	Priming Pump Components		Panel Switch and Wiring		Prime-Safe™ Lubricant	
			Series	Model	Series	Model		Exploded View	Cross-Sec- tion View	Standard Push-But- ton Switch	Optional Oversize Push-But- ton Switch	Configuration when Used	Configuration when Not Used
VPO	On Pump Transmission or P.T.O.		C20	C20B C20C C20D C20E C20F	-	-	2, 3	10, 11	12, 13	14, 15	18, 19	22, 23	22, 23
			-	-	TC10	TC10B TC10C TC10D TC10E TC10F	2, 3 or 4, 5*						
					TC21	TC21							
			C21	C21	-	-	2, 3						
			QC	QC	-	-	6, 7						
			W	WB WBX	-	-	8, 9						
VPOS	Separately Mounted (Not on Transmis- sion or P.T.O.)	Single Pump	All				-	10, 11	12, 13	16, 17	20, 21		
		Dual Pumps	All				-						

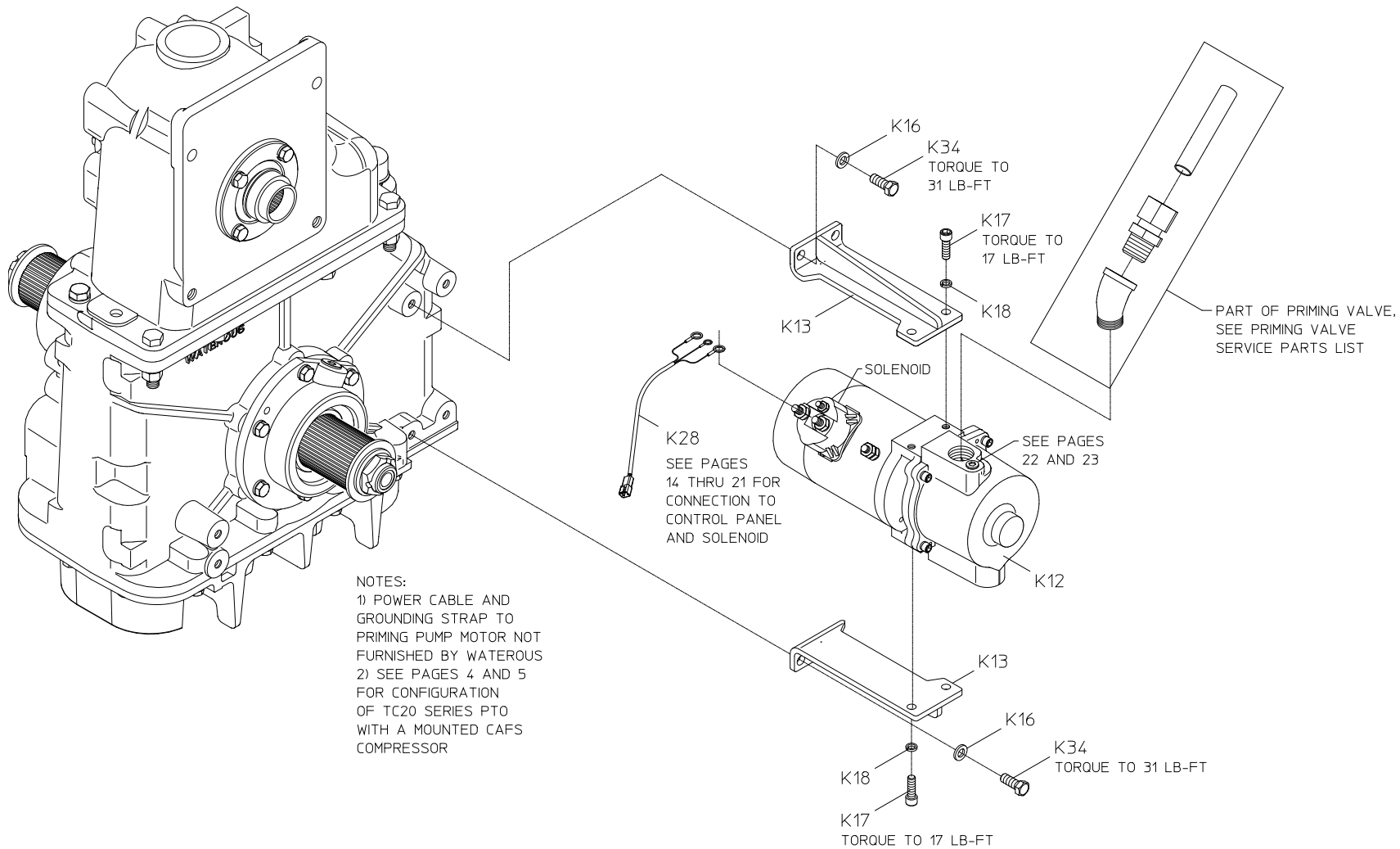
\*Note: Pages 4 and 5 apply to TC20 Series PTO's with a mounted CAFS compressor

## Model VPO

Mounting on C20 and C21Series Transmissions and TC20 and TC21Series P.T.O.'s

REF. NO.	DESCRIPTION
K12	Primer Sub-assembly
K13	Mounting Bracket
K16	Lock Washer, 3/8 in.

REF. NO.	DESCRIPTION
K17	Socket Hd Screw, 5/16-18 x 1 in.
K18	Lock Washer 5/16 in.
K28	Cable Extension
K34	Hex Hd Screw, 3/8-16 x 1 in.



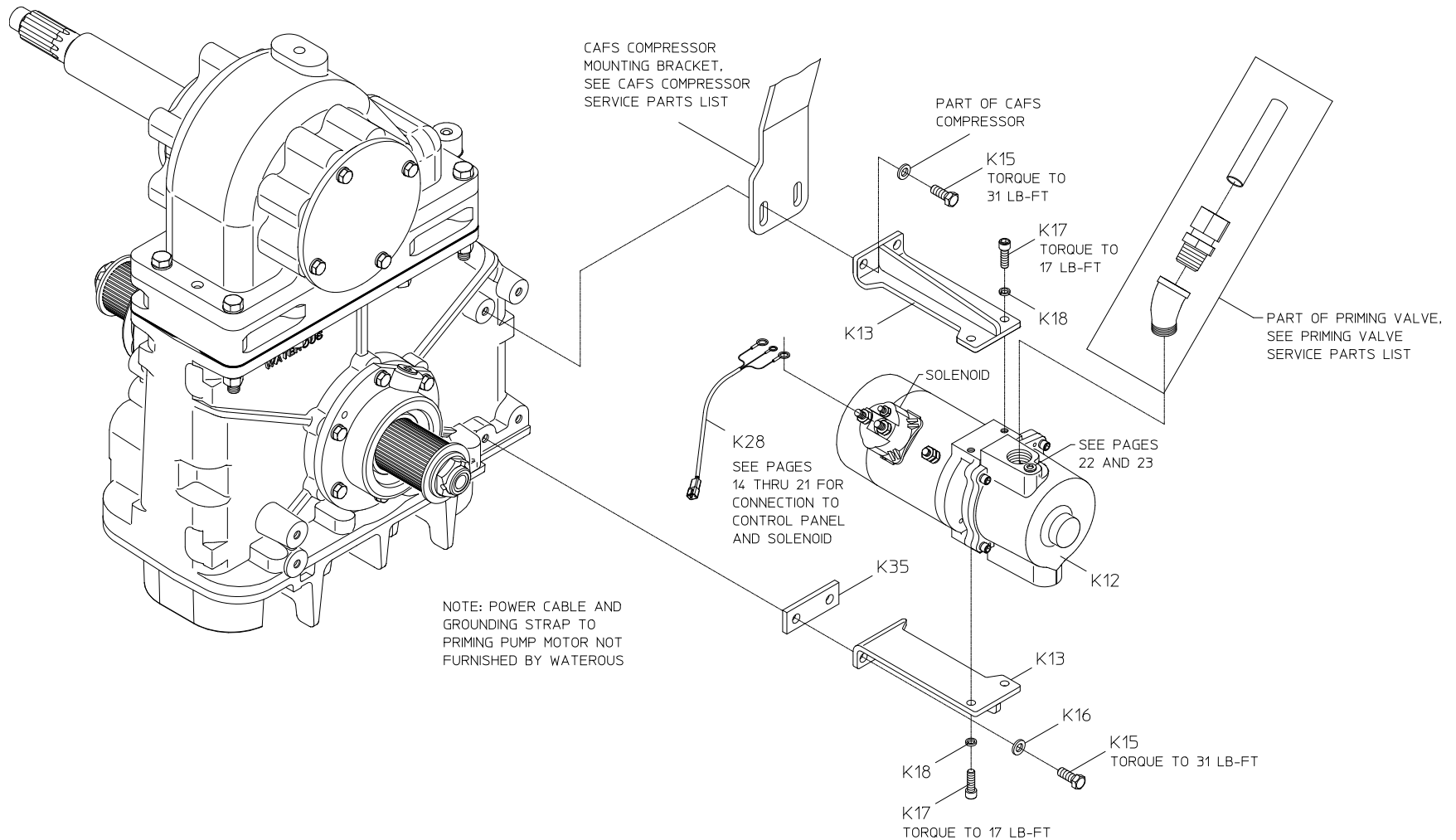
**MODEL VPO MOUNTING ON  
C20 AND C21 SERIES TRANSMISSIONS  
AND TC20 AND TC21 SERIES PTO'S**

## Model VPO

### Mounting on TC20 Series P.T.O.'s with a Mounted CAFS Compressor

REF. NO.	DESCRIPTION
K12	Primer Sub-assembly
K13	Mounting Bracket
K15	Hex Hd Screw, 3/8-16 x 1-1/4 in.
K16	Lock Washer, 3/8 in.

REF. NO.	DESCRIPTION
K17	Socket Hd Screw, 5/16-18 x 1 in.
K18	Lock Washer 5/16 in.
K28	Cable Extension
K35	Bottom Mounting Bracket Spacer

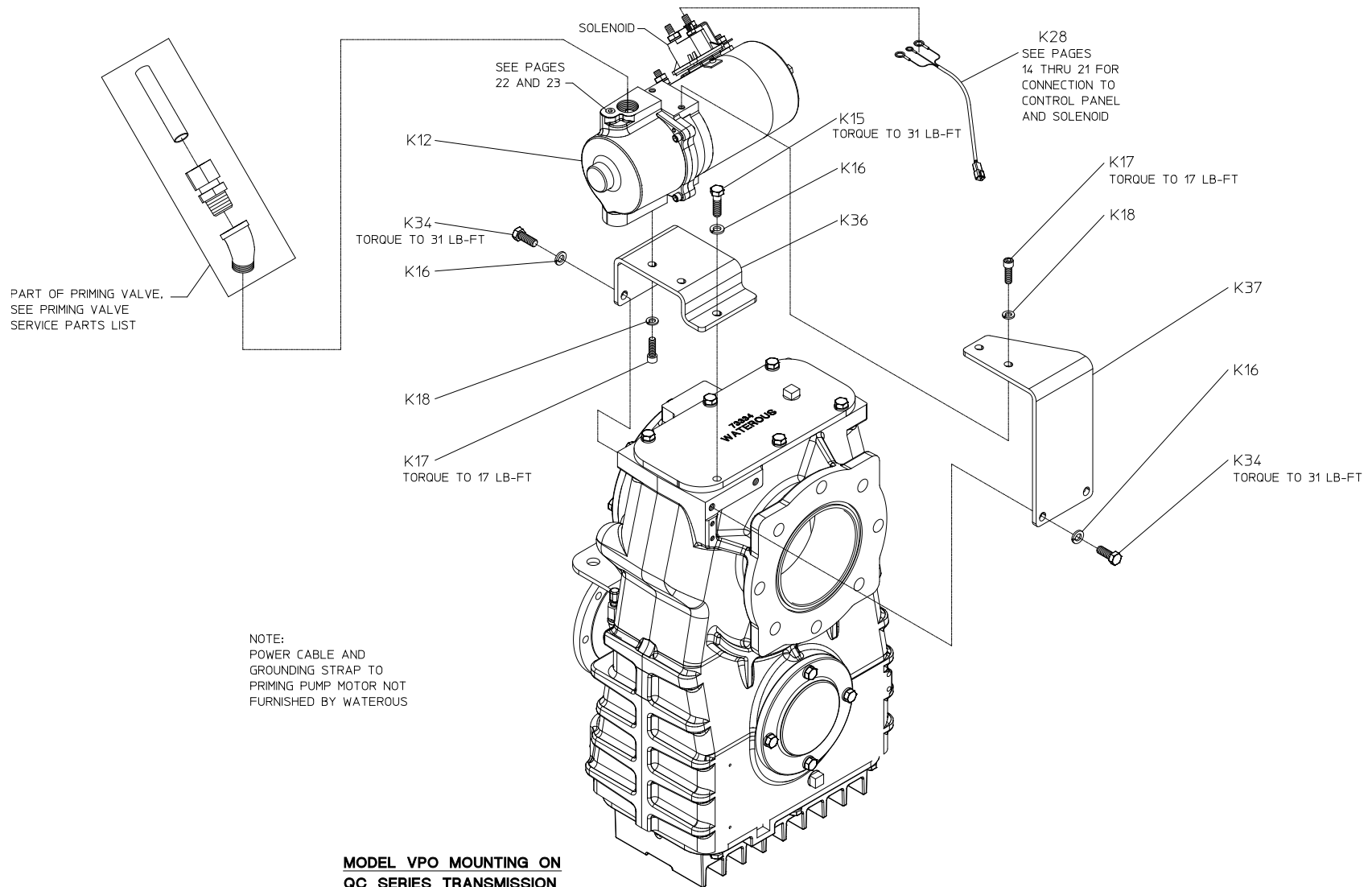


**MODEL VPO MOUNTING ON  
TC20 SERIES PTO WITH A MOUNTED CAFS COMPRESSOR**

**Model VPO**  
Mounting on QC Series Transmission

REF. NO.	DESCRIPTION
K12	Primer Sub-assembly
K15	Hex Hd Screw 3/8-16 x 1-1/4 in.
K16	Lock Washer, 3/8 in.
K17	Socket Hd Screw, 5/16-18 x 1 in.
K18	Lock Washer 5/16 in.
K 28	Cable Extension

REF. NO.	DESCRIPTION
K34	Hex Hd Screw, 3/8-16 x 1 in.
K36	Lower Primer Bracket
K37	Upper Primer Bracket
K38	3/4 NPT x 3/4 Tubing Fitting

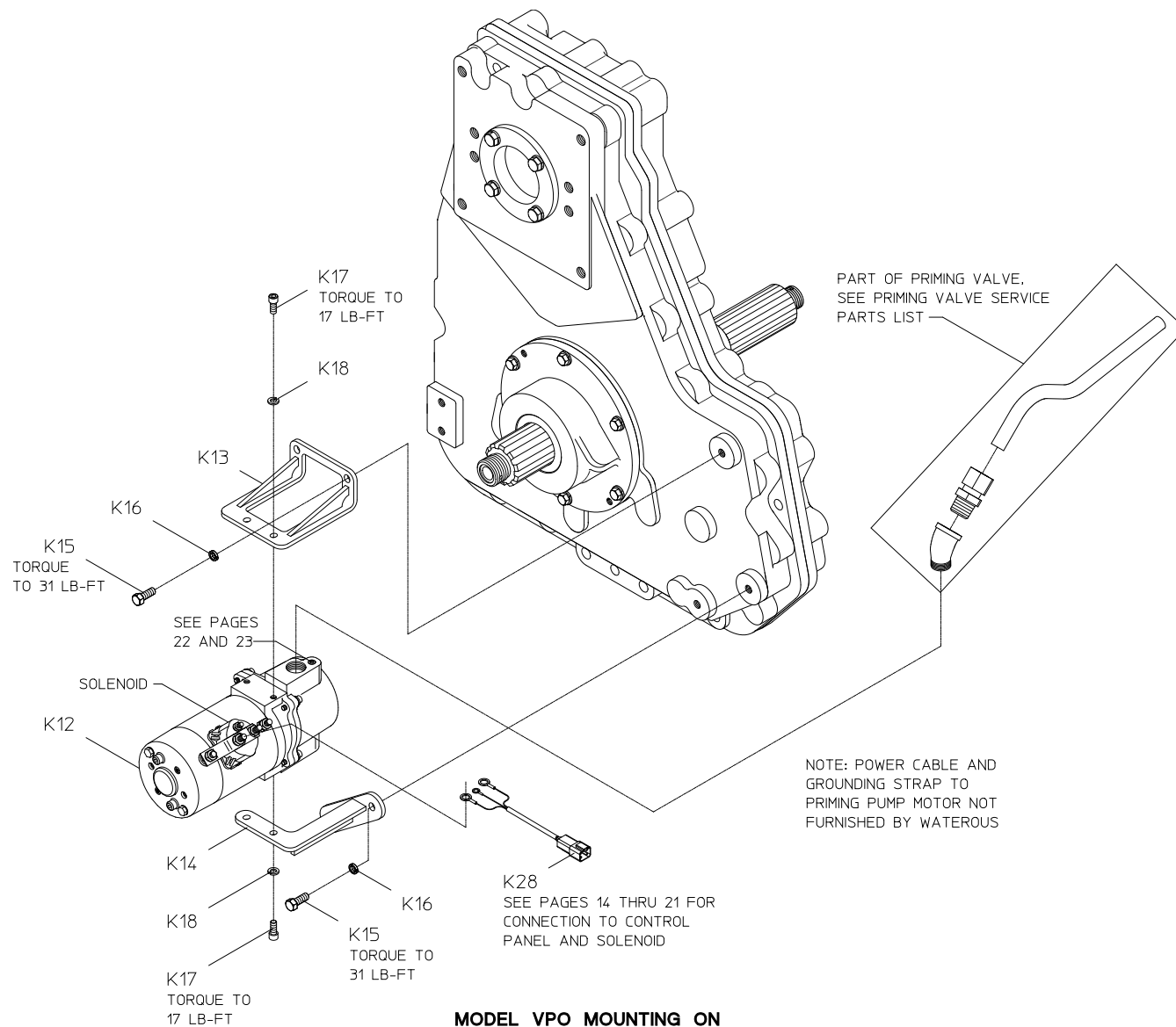


**Model VPO**  
Mounting on W Series Transmissions

REF. NO.	DESCRIPTION
K12	Primer Sub-assembly
K13	Mounting Bracket
K14	Bottom Mounting Bracket
K15	Hex Hd Screw, 3/8-16 x 1-1/4 in.

REF. NO.	DESCRIPTION
K16	Lock Washer, 3/8 in.
K17	Socket Hd Screw, 5/16-18 x 1 in.
K18	Lock Washer 5/16 in.
K28	Cable Extension





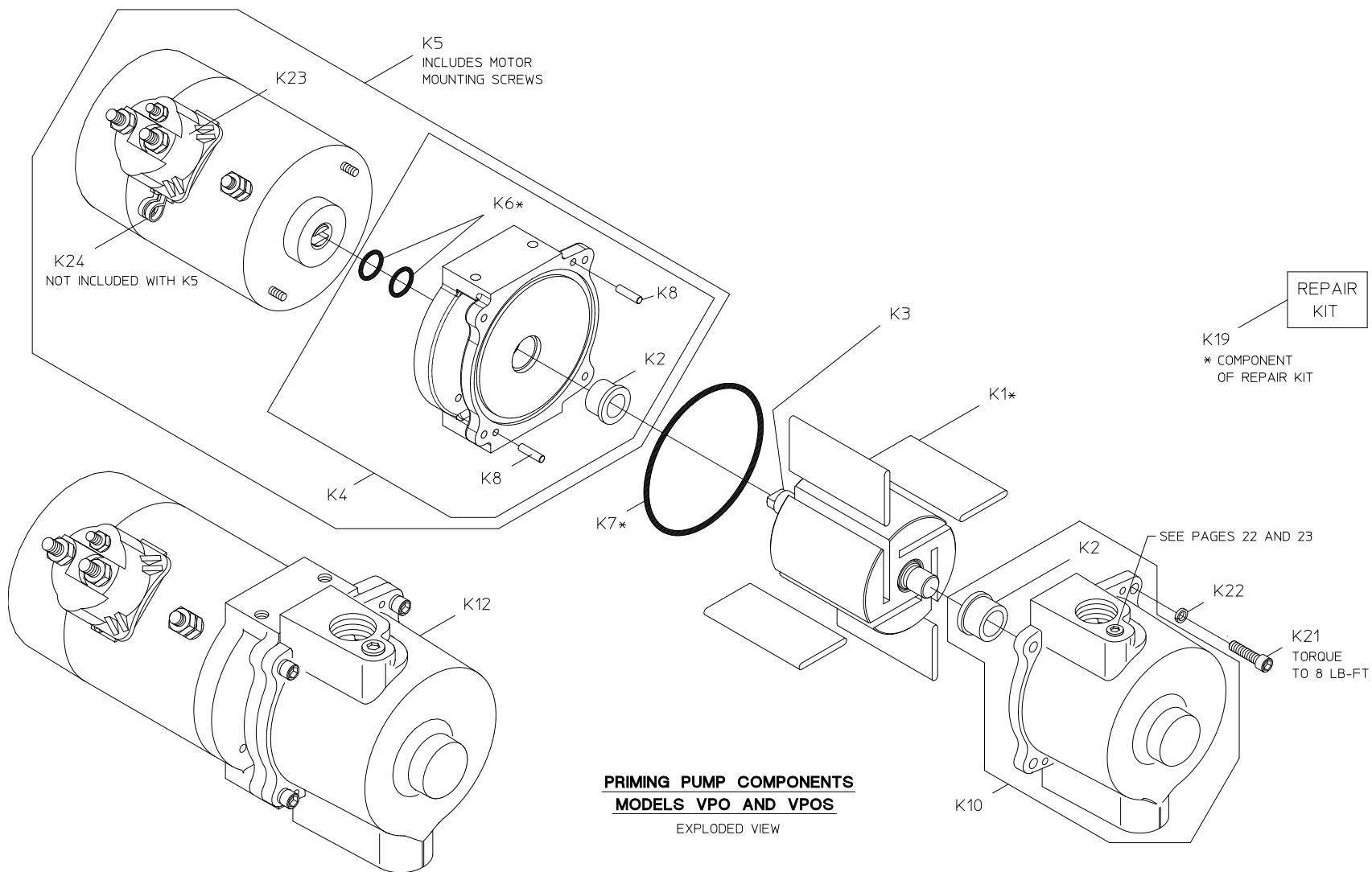
**MODEL VPO MOUNTING ON  
W SERIES TRANSMISSIONS**

## Priming Pump Components

### Models VPO and VPOS (Exploded View)

REF. NO.	DESCRIPTION
K1	Vane
K2	Oilite Bearing
K3	Rotor Assembly (Includes Shaft)
K4	Adapter Assembly, (Includes K2, K6 and K8)
K5	Motor Assembly (Includes K2, K4, K6, K8, K23 and (2) 1/4-20 x 6-1/2 in. Hex Hd Mounting Screws)
K6	O-ring, .612 x .818 in.
K7	O-ring, 3.859 x 4.137 in.
K8	Dowel Pin, 3/15 x 3/4 in.

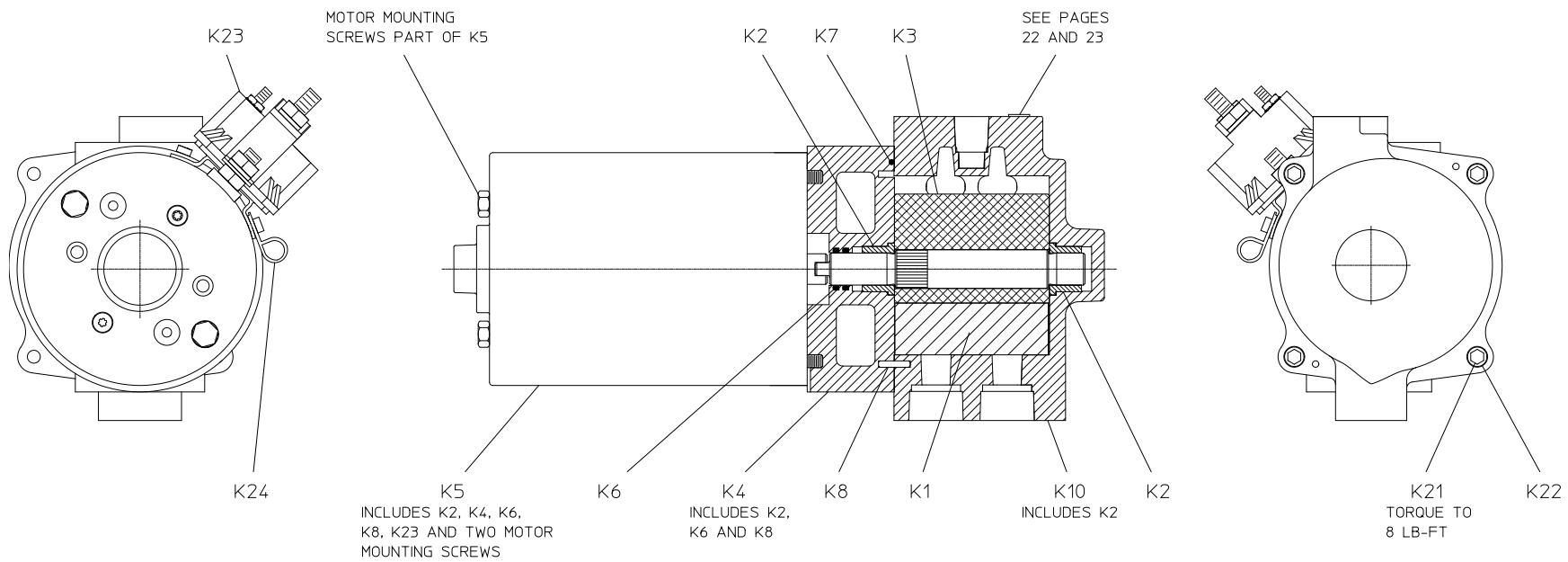
REF. NO.	DESCRIPTION
K10	Housing Assembly (Includes K2)
K12	Primer Sub-assembly
K19	Repair Kit
K21	Socket Hd Screw, 1/4-20 x 1 in.
K22	Lock Washer, 1/4 in.
K23	Solenoid
K24	Wire Clamp



# **Priming Pump Components** Models VPO and VPOS (Cross-Section View)

REF. NO.	DESCRIPTION
K1	Vane
K2	Oilite Bearing
K3	Rotor Assembly (Includes Shaft)
K4	Adapter Assembly, (Includes K2, K6 and K8)
K5	Motor Assembly (Includes K2, K4, K6, K8, K23 and(2) 1/4-20 x 6-1/2 in. Hex Hd Mounting Screws)
K6	O-ring, .612 x .818 in.
K7	O-ring, 3.859 x 4.137 in.
K8	Dowel Pin, 3/15 x 3/4 in.

REF. NO.	DESCRIPTION
K10	Housing Assembly (Includes K2)
K21	Socket Hd Screw, 1/4-20 x 1 in.
K22	Lock Washer, 1/4 in.
K23	Solenoid
K24	Wire Clamp



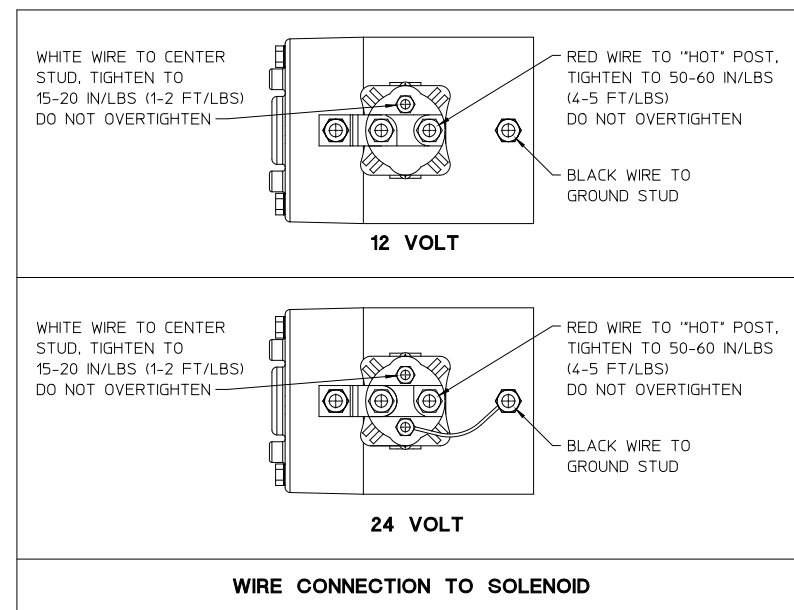
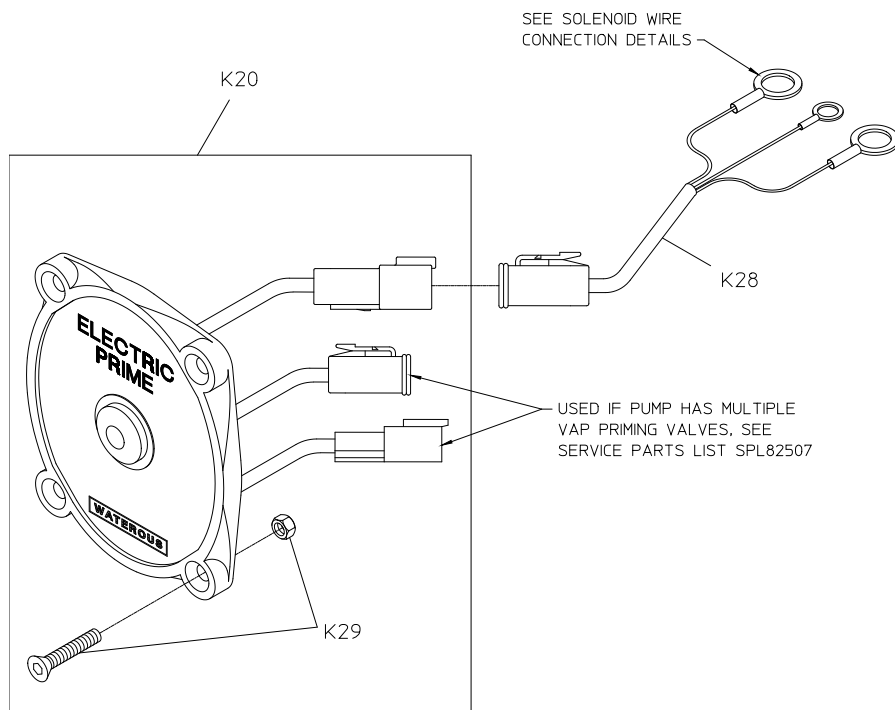
**PRIMING PUMP COMPONENTS**  
**MODELS VPO AND VPOS**  
 CROSS-SECTION VIEW

## Panel Switch and Wiring

### Standard Push-Button Switch – Single Primer

REF. NO.	DESCRIPTION
K20	Control Panel with Integral Switch (Includes K29 Mounting Screw and Nuts)
K28	Cable Extension

REF. NO.	DESCRIPTION
K29	Flat Hd Screw, 6-32 x 3/4 in. and 6-32 Hex Nut (For Control Panel)



**PANEL SWITCH AND WIRING**  
**STANDARD PUSH-BUTTON SWITCH**  
 SINGLE PRIMER

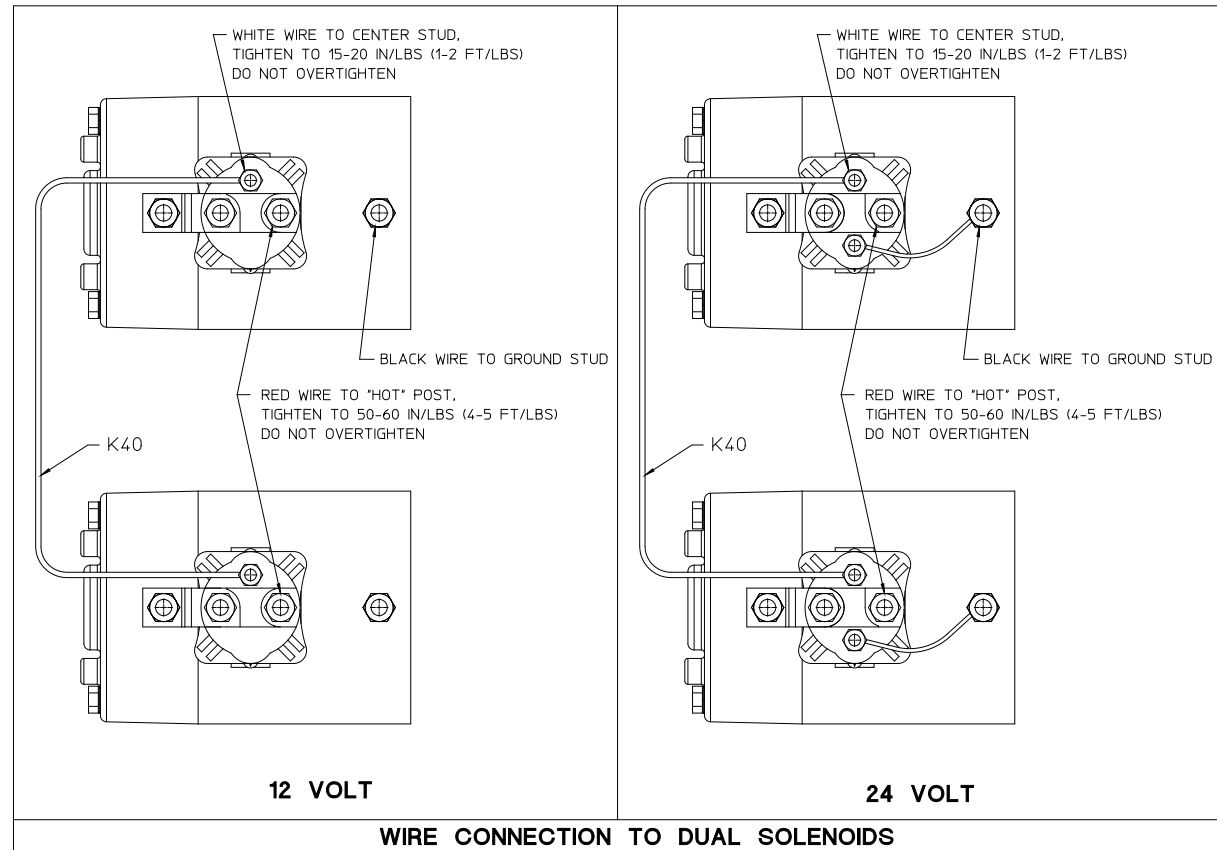
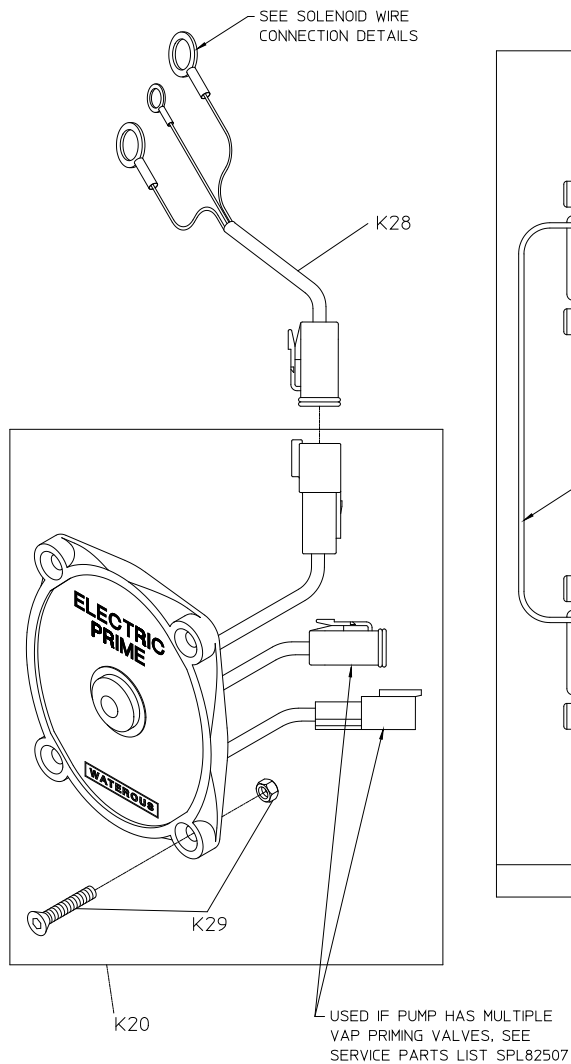
## Panel Switch and Wiring

### Standard Push-Button Switch – Dual Primers

REF. NO.	DESCRIPTION
K20	Control Panel with Integral Switch (Includes K29 Mounting)
K28	Cable Extension

REF. NO.	DESCRIPTION
K29	Flat Hd Screw, 6-32 x 3/4 in. and 6-32 Hex Nut (For Control Panel)
K40	Jumper Wire



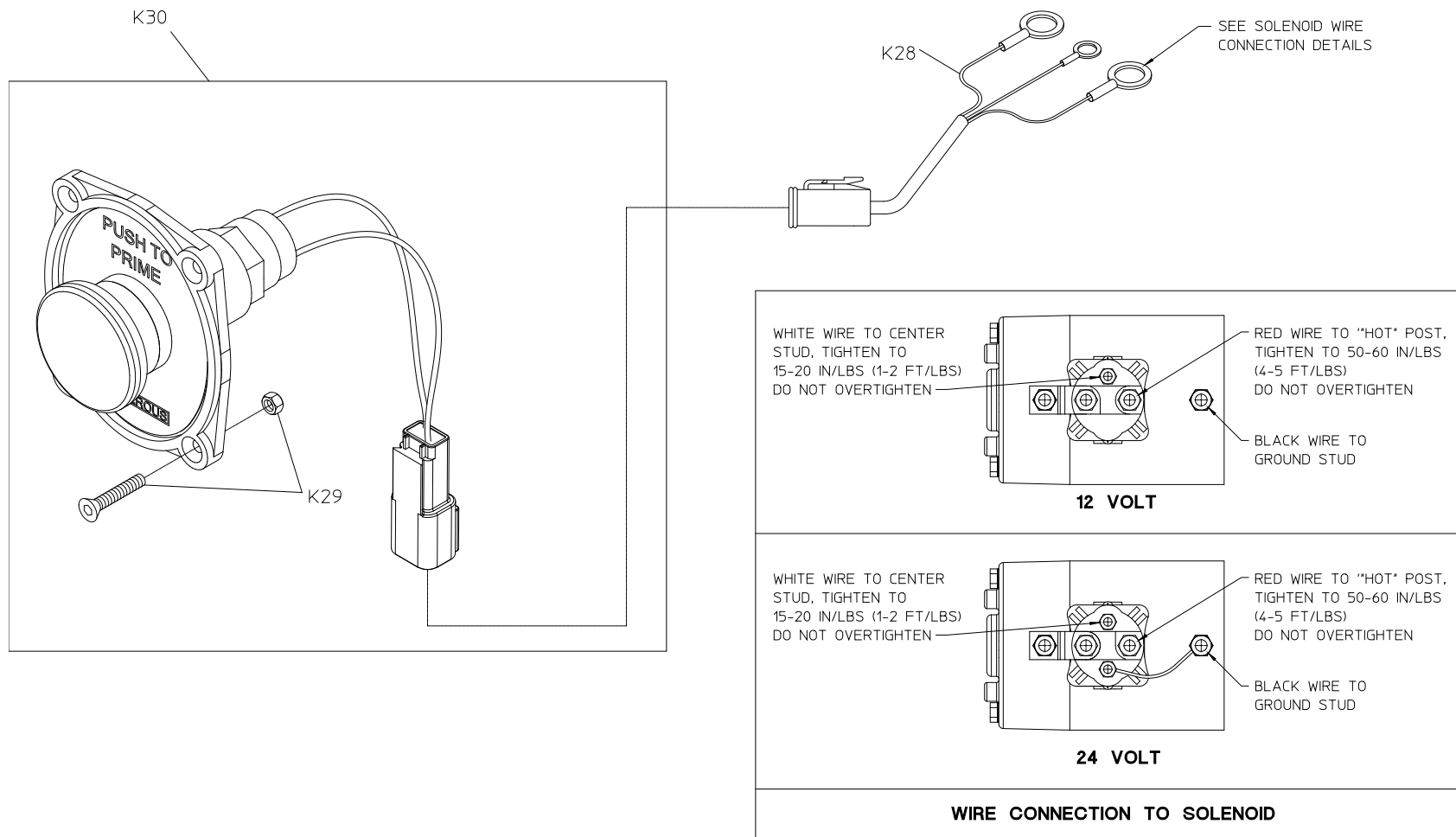


**PANEL SWITCH AND WIRING**  
**STANDARD PUSH-BUTTON SWITCH**  
 DUAL PRIMERS

**Panel Switch and Wiring**  
Oversize Push-Button Switch – Single Primer

REF. NO.	DESCRIPTION
K28	Cable Extension
K29	Flat Hd Screw, 6-32 x 3/4 in. and 6-32 Hex Nut (For Control Panel)

REF. NO.	DESCRIPTION
K30	Control Panel with Integral Switch (Includes K29 Mounting Screws and Nuts)



**PANEL SWITCH AND WIRING**  
**OVERSIZE PUSH-BUTTON SWITCH**

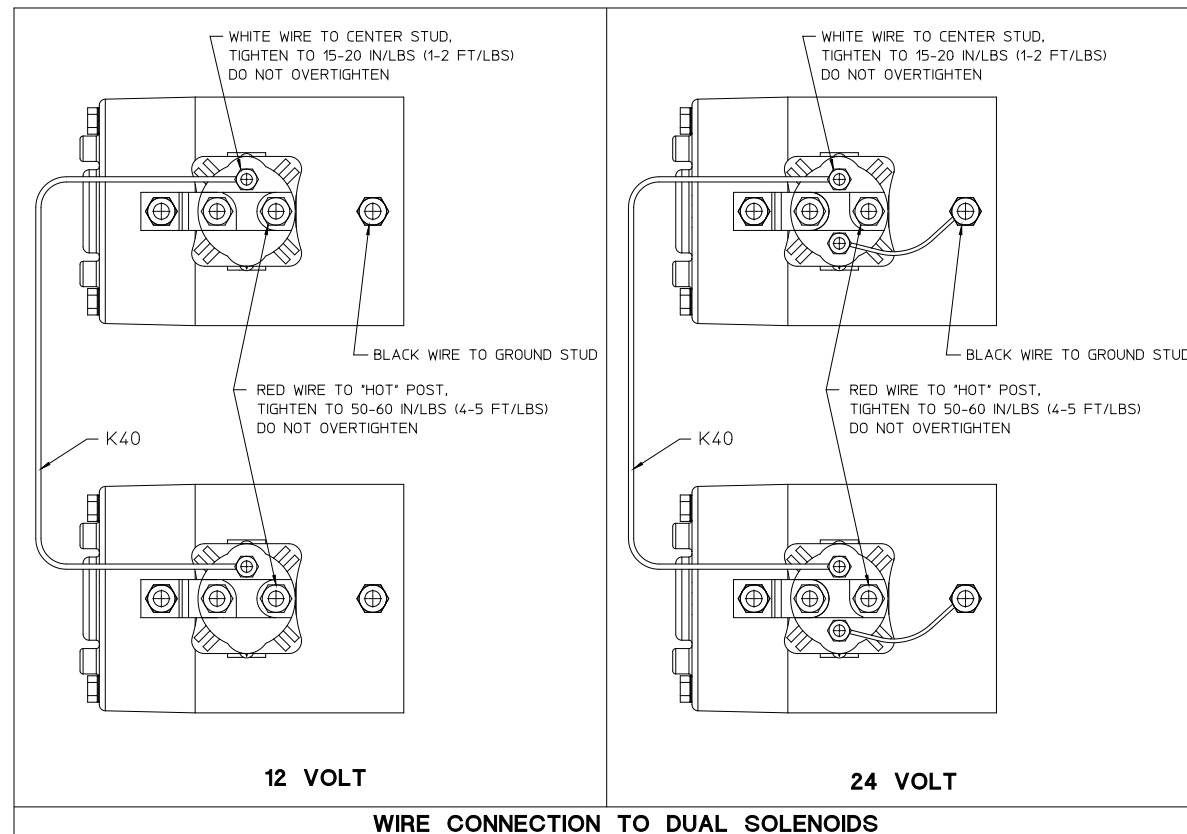
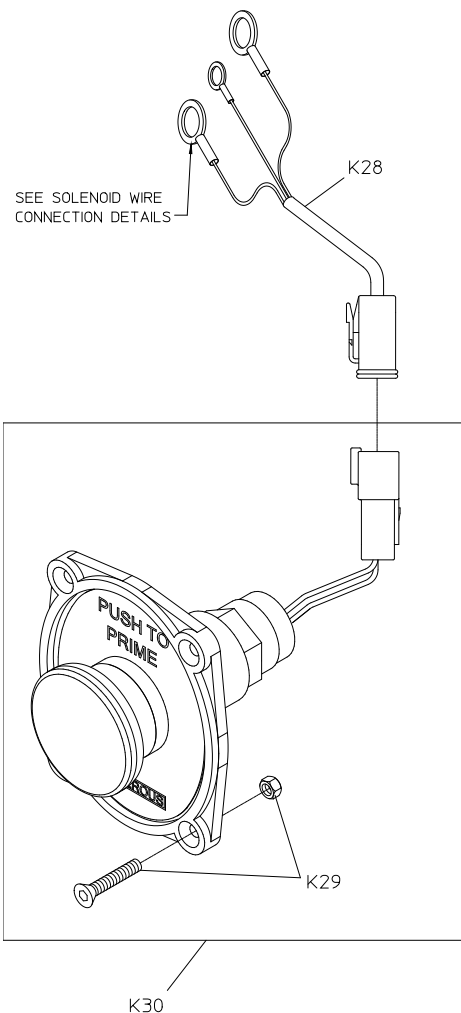
SINGLE PRIMER

## Panel Switch and Wiring

### Oversize Push Button Switch - Dual Primers

REF. NO.	DESCRIPTION
K28	Cable Extension
K29	Flat Head Screw, 6-32 x 3/4 in. and 6-32 Hex Nut (For Control Panel)
K30	Control Panel with Integral Switch (Includes K29 Mounting Screws and Nuts)

REF. NO.	DESCRIPTION
K40	Jumper Wire

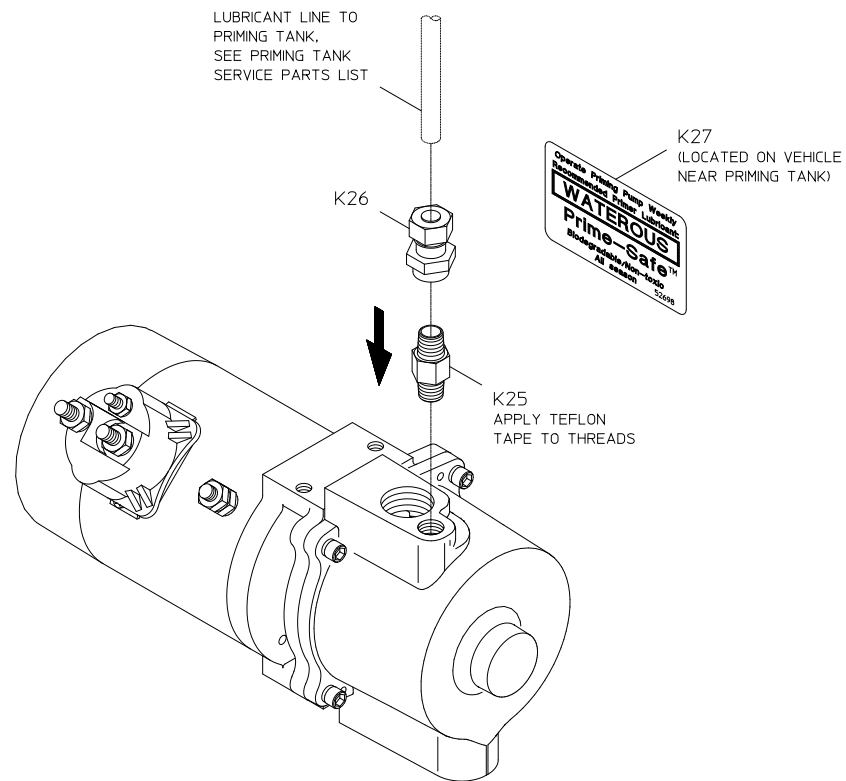


**PANEL SWITCH AND WIRING**  
**OVERSIZE PUSH-BUTTON SWITCH**  
 DUAL PRIMERS

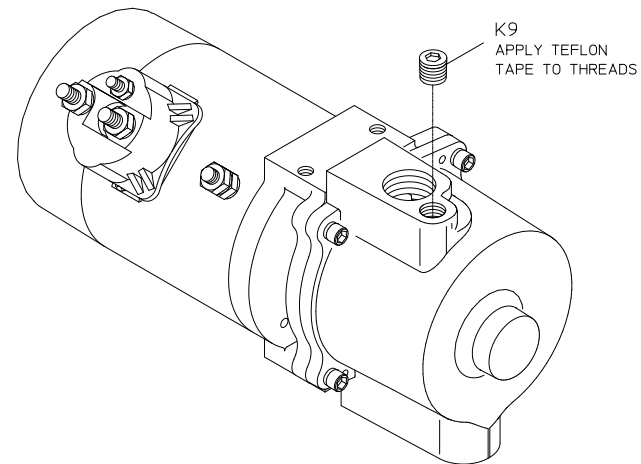
## Prime-Safe™ Lubricant

REF. NO.	DESCRIPTION
K9	Headless Pipe Plug, 1/8 NPT
K25	Check Valve, 1/8 NPT

REF. NO.	DESCRIPTION
K26	Compression Fitting, 1/8 in.
K27	Prime-Safe™ Decal



CONFIGURATION WHEN USED



CONFIGURATION WHEN NOT USED

**PRIME-SAFE™ LUBRICANT**