



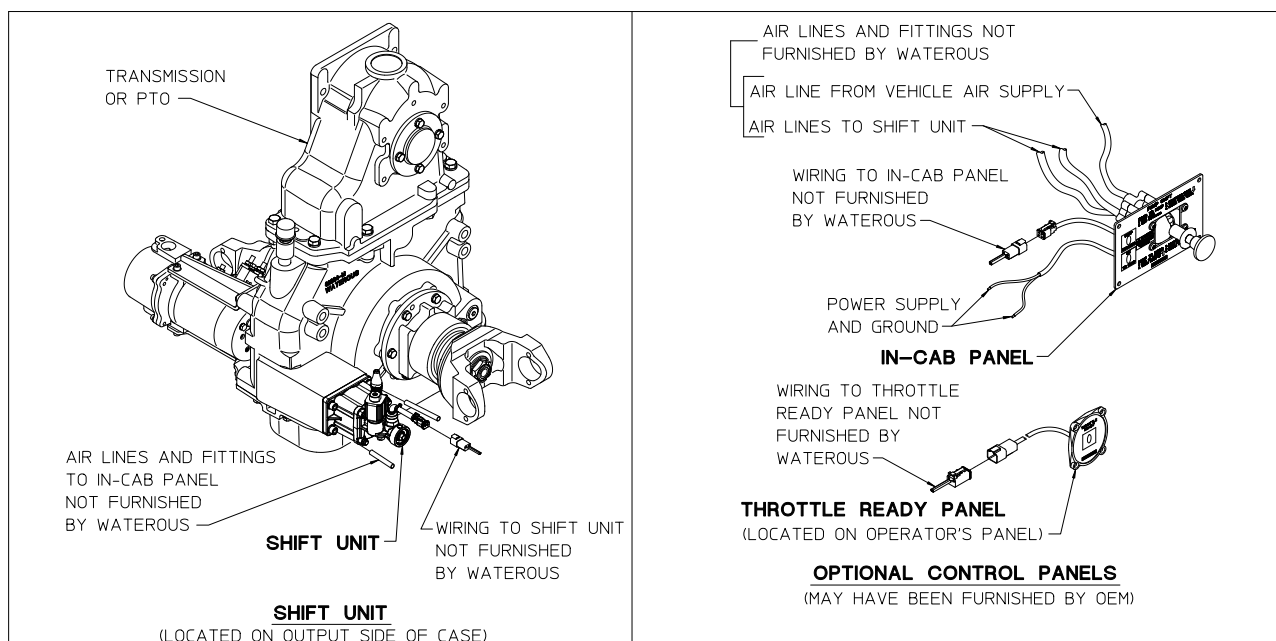
Document Number	Issue Date	Rev. Date
<b>SPL83661</b>	<b>10/11/17</b>	<b>2/8/22</b>

## Pneumatic Shift Service Parts List

As used with C20, C21 Series Transmissions and TC20, TC21 Series PTO's

### Index:

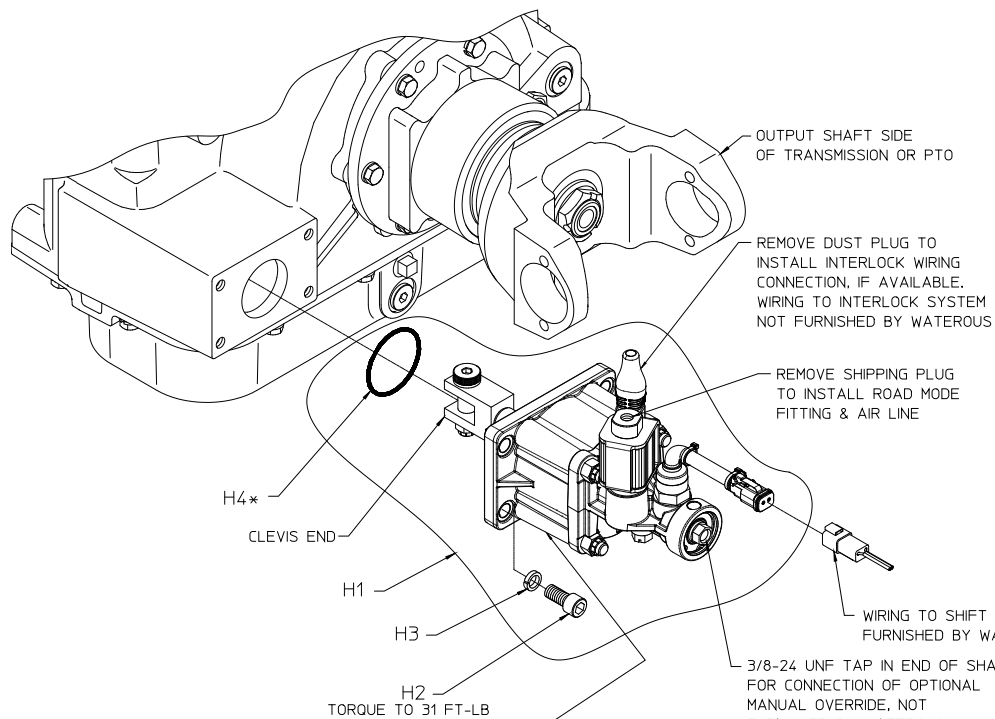
Component			See Page
<b>Shift Unit</b>	Mounting on Transmission or PTO		2, 3
	Components		4, 5
<b>Optional Control Panels</b> <i>(May have been furnished by OEM)</i>	In-Cab Panel		6, 7
	Throttle Ready Panel <i>(Located on Operator's Panel)</i>	Single Light	8, 9
		Dual Light	10, 11



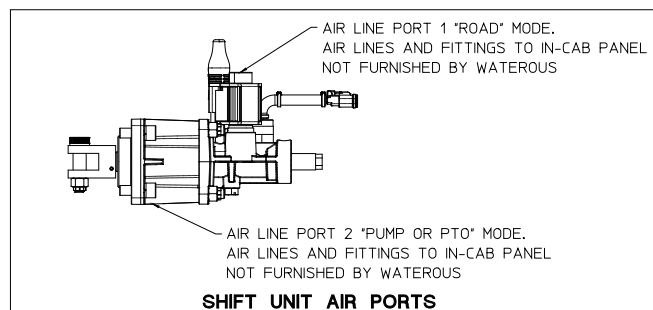
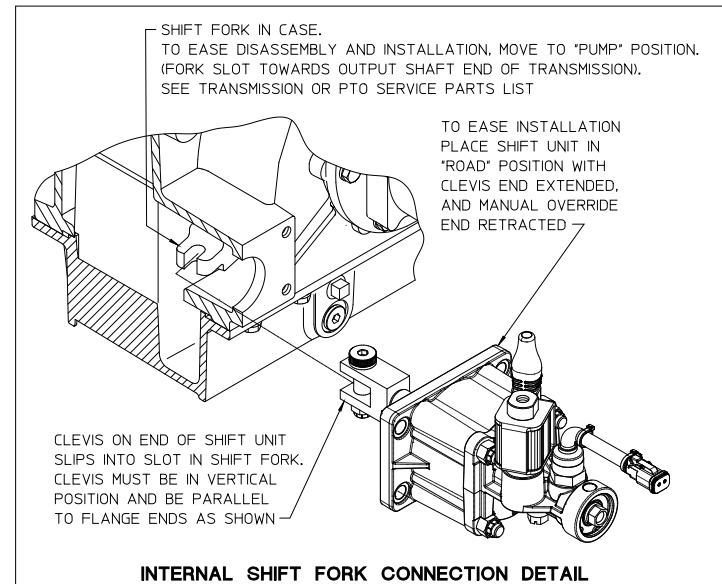
## Shift Unit – Mounting on Transmission or PTO

REF. NO.	DESCRIPTION
H1	Shift Unit Assembly (Includes Ref. No.'s H2, H3 and H4)
H2	Skt Hd Cap Screw, 3/8-16 x 1 in.
H3	Lock Washer, 3/8 in.

REF. NO.	DESCRIPTION
H4	O-ring, 2-1/4 x 2-1/2 in.



\*COMPONENT OF TRANSMISSION O-RING AND GASKET KIT, SEE TRANSMISSION OR PTO SERVICE PARTS LIST

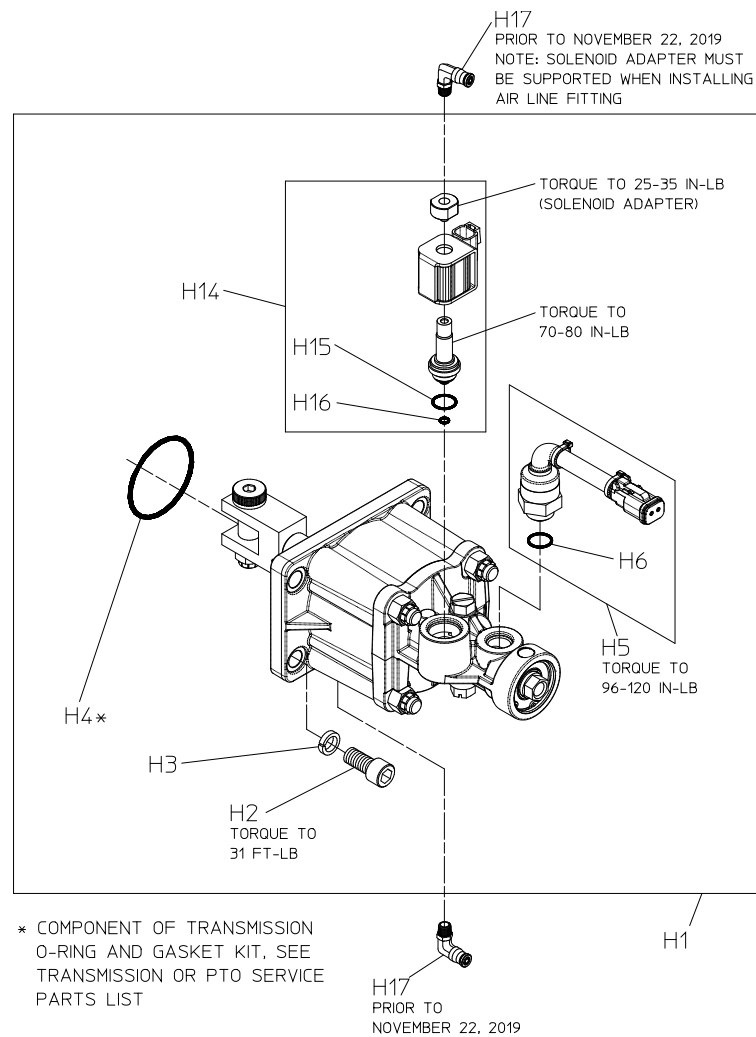


**SHIFT UNIT – MOUNTING ON TRANSMISSION OR PTO**

## Shift Unit – Components

REF. NO.	DESCRIPTION
H1	Shift Unit Assembly (Includes Ref. No.'s H2 thru H16)
H2	Skt Hd Cap Screw, 3/8-16 x 1 in.
H3	Lock Washer, 3/8 in.
H4	O-ring, 2-1/4 x 2-1/2 in.
H5	Switch (Includes Ref. No. H6)
H6	O-ring, 1/2 x 5/8 in.

REF. NO.	DESCRIPTION
H14	Shift Interlock Solenoid (Includes H15 and H16)
H15	O-ring, 5/8 x 3/4 in.
H16	O-ring, 3/16 x 5/16 in.
H17	Elbow Adapter, 1/8 NPT x 1/4 Tube



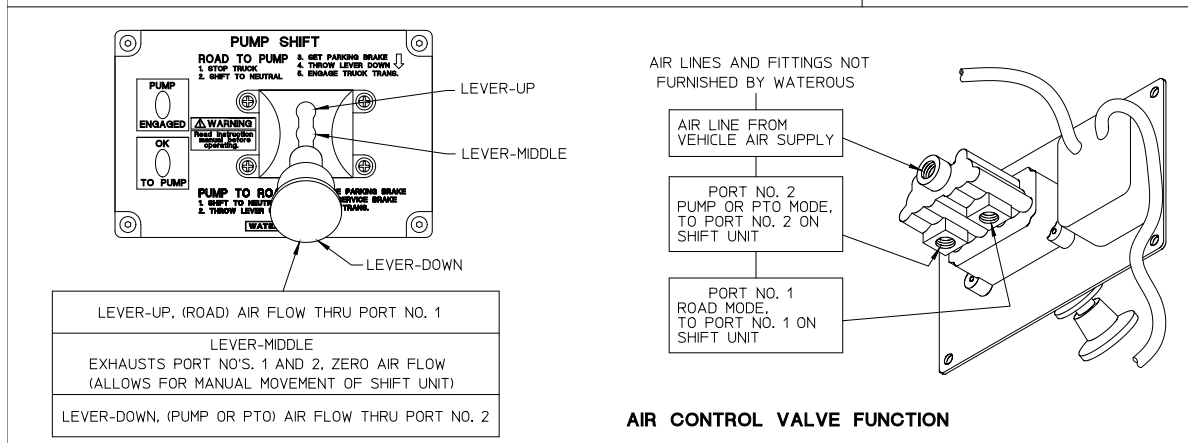
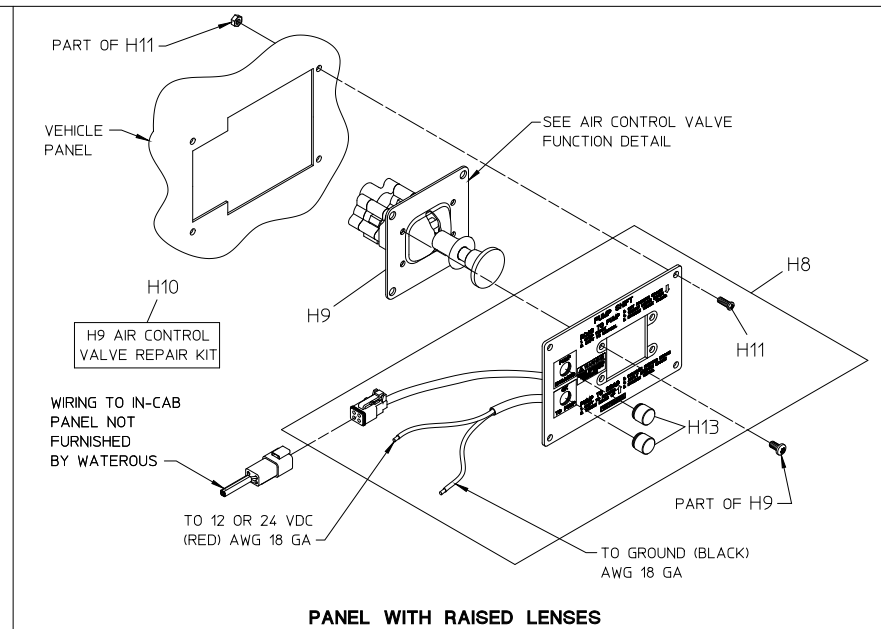
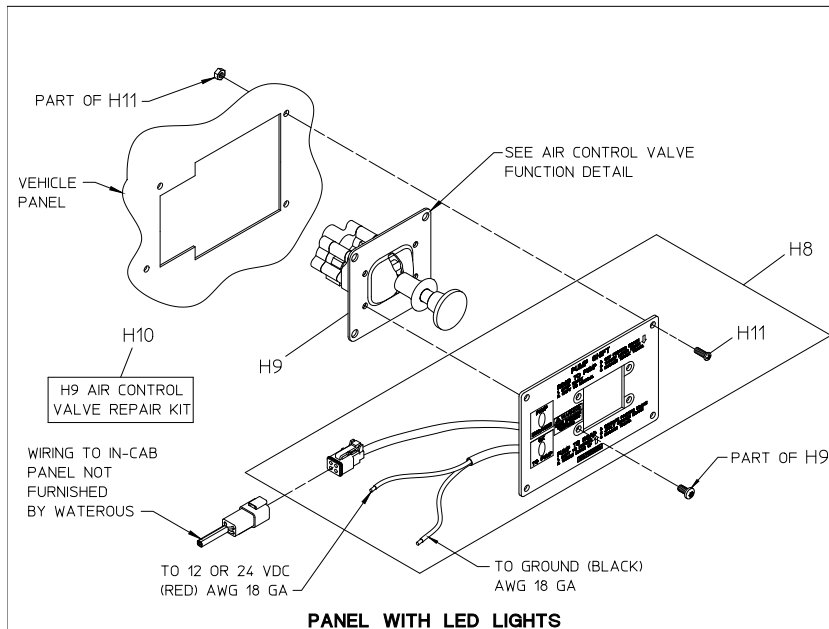
### SHIFT UNIT – COMPONENTS

## Optional Control Panels

### In-Cab Panels

REF. NO.	DESCRIPTION
H8	In-Cab Panel (Includes four Ref. No. H11 mounting screws and nuts)
H9	Air Control Valve (Includes four 10-32 x 1/2 in. Torx Button Head mounting screws)

REF. NO.	DESCRIPTION
H10	Air Control Valve Repair Kit
H11	Flat Hd Screw 10-24 x 3/4 in. and 10-24 Hex Nut (For In-Cab Panel)
H13	Green Lens Cap



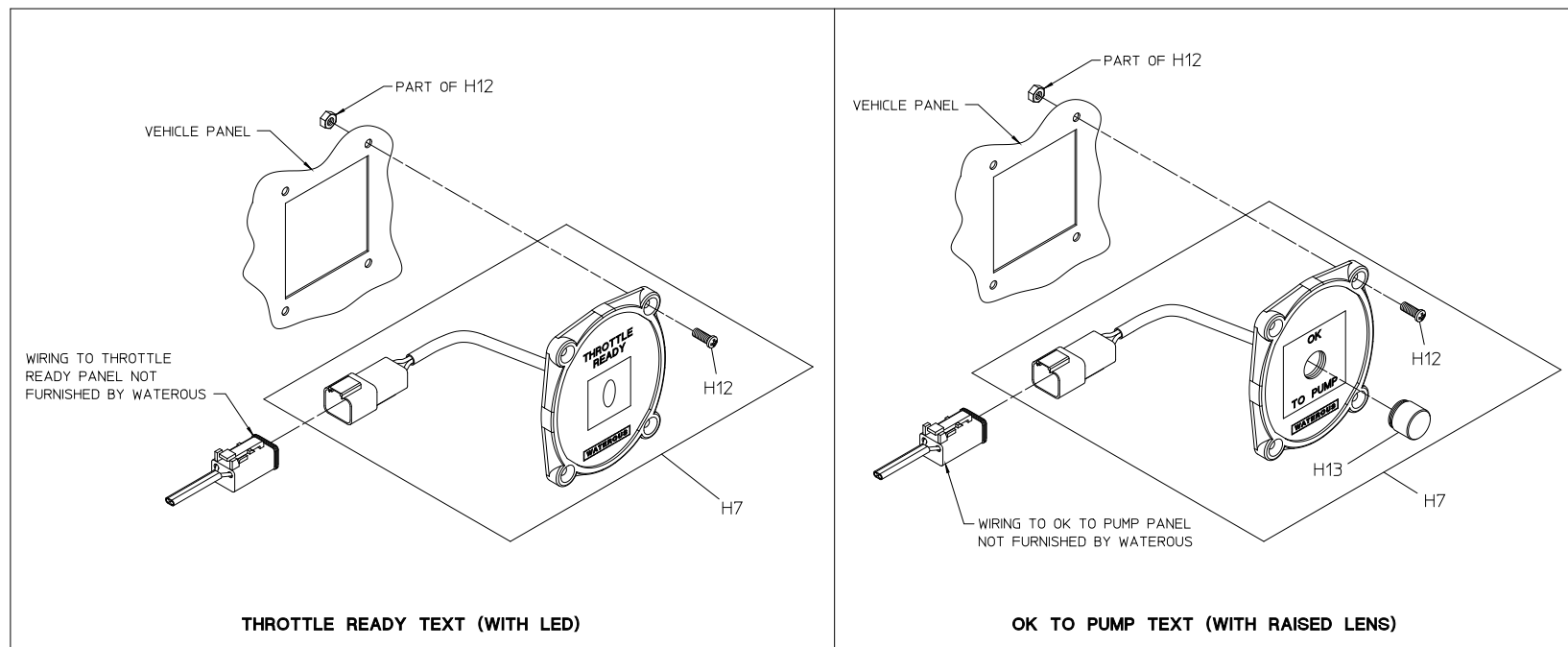
## IN-CAB PANEL

**Optional Control Panels**  
**Throttle Ready Panel (Located on Operator's Panel) – Single Light**

REF. NO.	DESCRIPTION
H7	Throttle Ready Panel (Includes four Ref. No. H12 mounting screws and nuts)

REF. NO.	DESCRIPTION
H12	Flat Hd Screw, 6-32 x 3/4 in. and 6-32 Hex Nut (For Throttle Ready Panel)
H13	Green Lens Cap





## THROTTLE READY PANEL

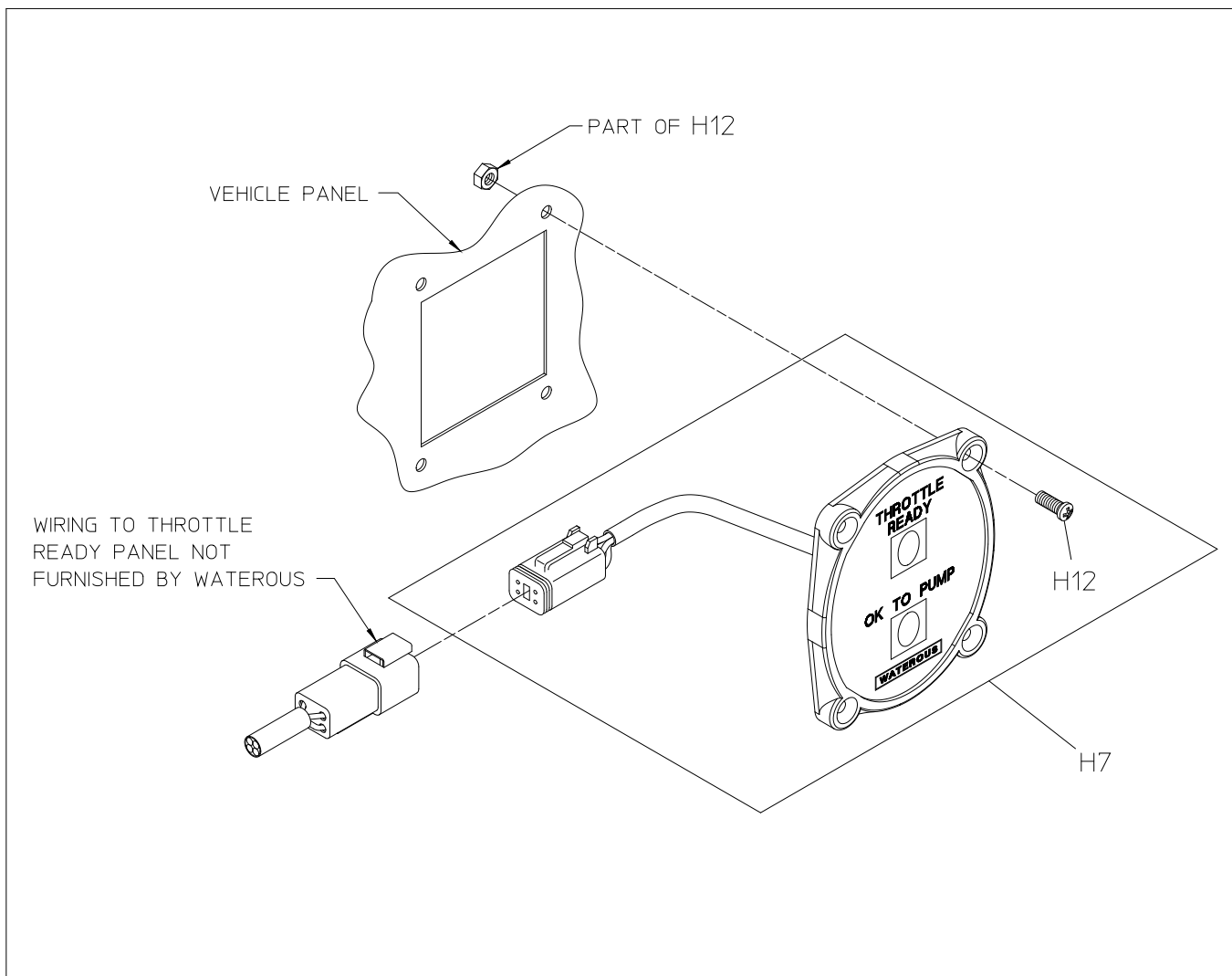
LOCATED ON OPERATOR'S PANEL

### SINGLE LIGHT

**Optional Control Panels**  
**Throttle Ready Panel (Located on Operator's Panel) – Dual Light**

REF. NO.	DESCRIPTION
H7	Throttle Ready Panel (Includes four Ref. No. H12 mounting screws and nuts)

REF. NO.	DESCRIPTION
H12	Flat Hd Screw, 6-32 x 3/4 in. and 6-32 Hex Nut (For Throttle Ready Panel)



## THROTTLE READY PANEL

LOCATED ON OPERATOR'S PANEL

## DUAL LIGHT