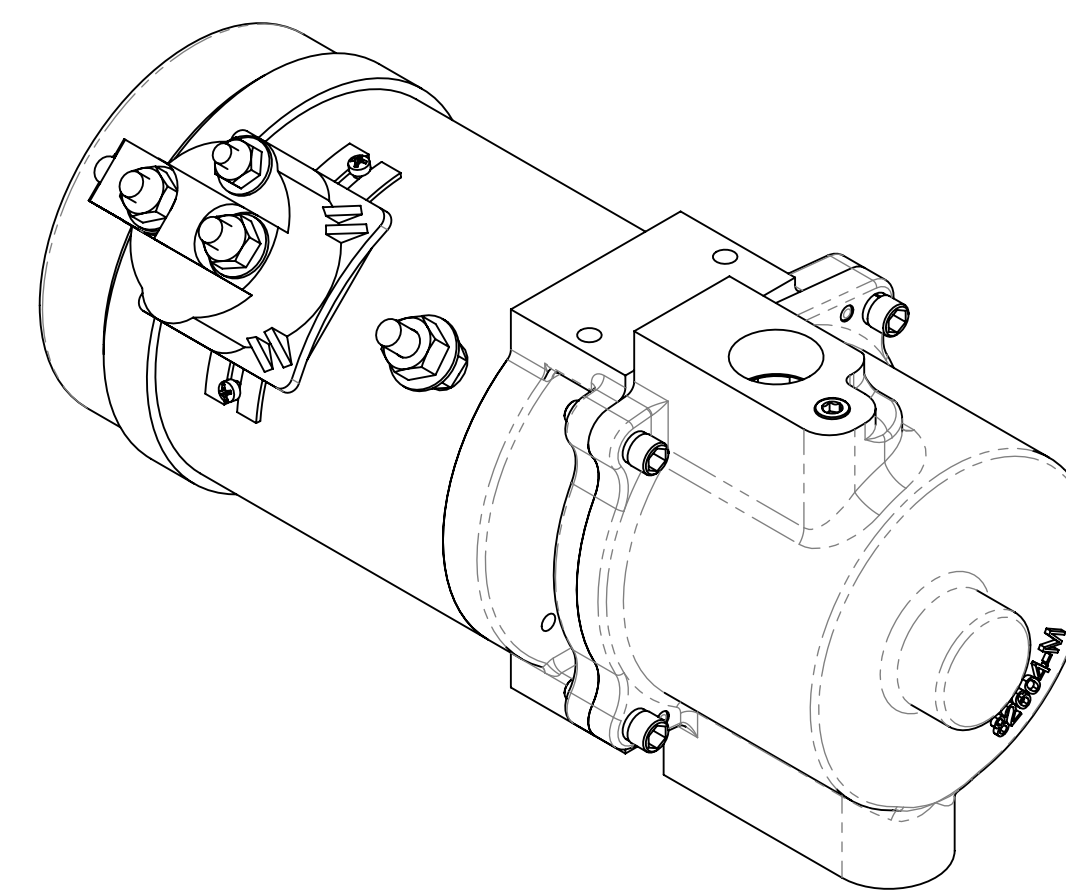


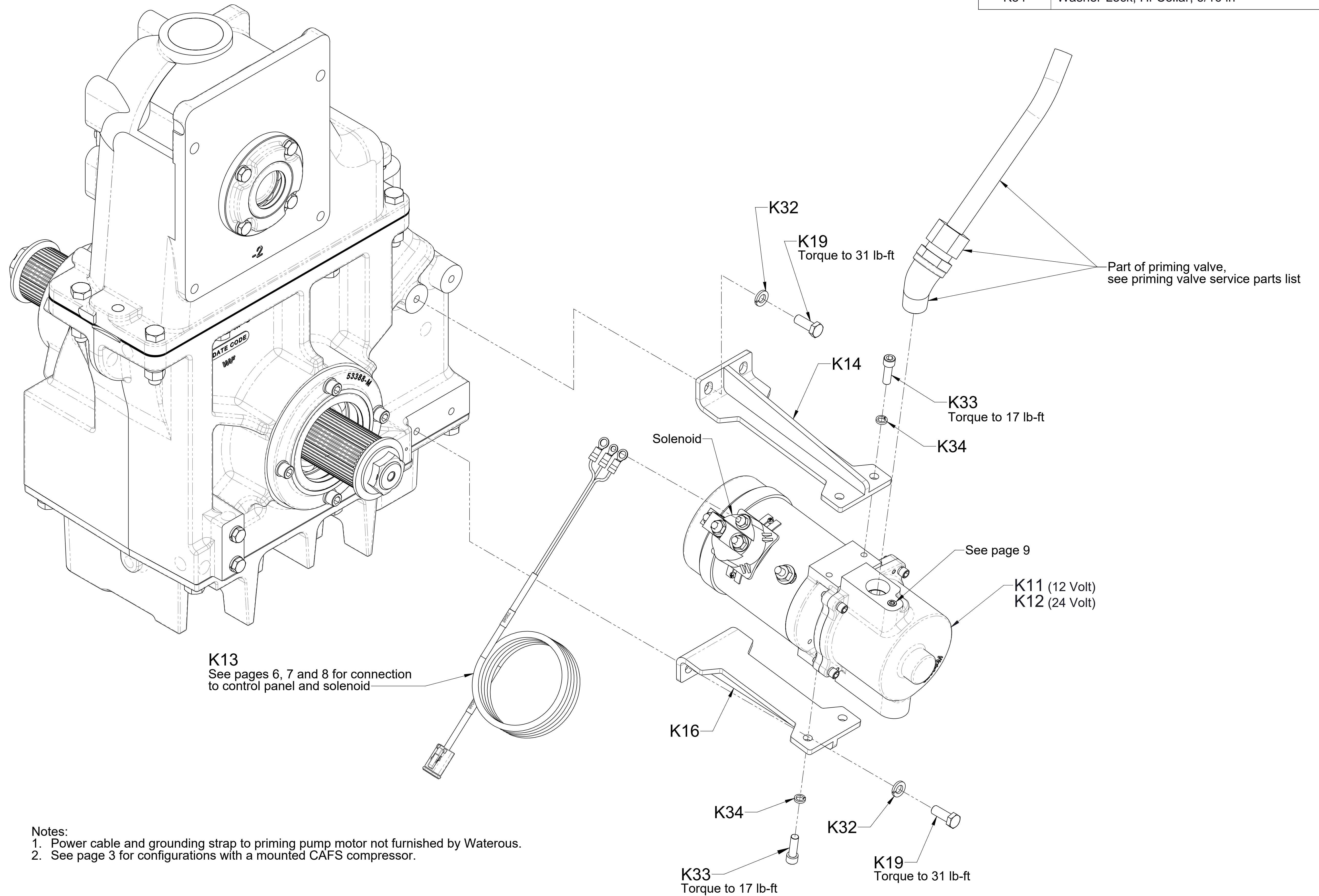
Model VPO and VPOS Priming Pump Service Parts List

Index

Model	Mounting	Number of Priming Pumps	Transmission or PTO	CAFS	See Page								
					Mounting	Priming Pump Subassembly Components	Panel Switch			Prime-Safe™ Lubricant			Auto-Prime without Panel Switch
							Standard Push-Button	Oversize Push-Button	Auto Prime (Rocker) (12 Volt Only)	Configuration when Used		Priming Pump Configuration when Not Used	
										Priming Pump Configuration	Optional 5 Quart Priming Tank		
VPO	On the Transmission	Single Pump	C20 Series C21 Series C22 Series C23 Series	With or Without	2	5	6	7	8	9	See Priming Tank Service Parts List	9	10
			QC	With or Without	4								
	On the PTO	Single Pump	TC20 Series TC21 Series TC22 Series TC23 Series	With or Without	2								
			TC20 TC22	With Eclipse ES	3								
			TQC	With or Without	4								
VPOS	By the OEM	Single Pump	All	With or Without	--								
		Dual Pumps	All	With or Without	--								

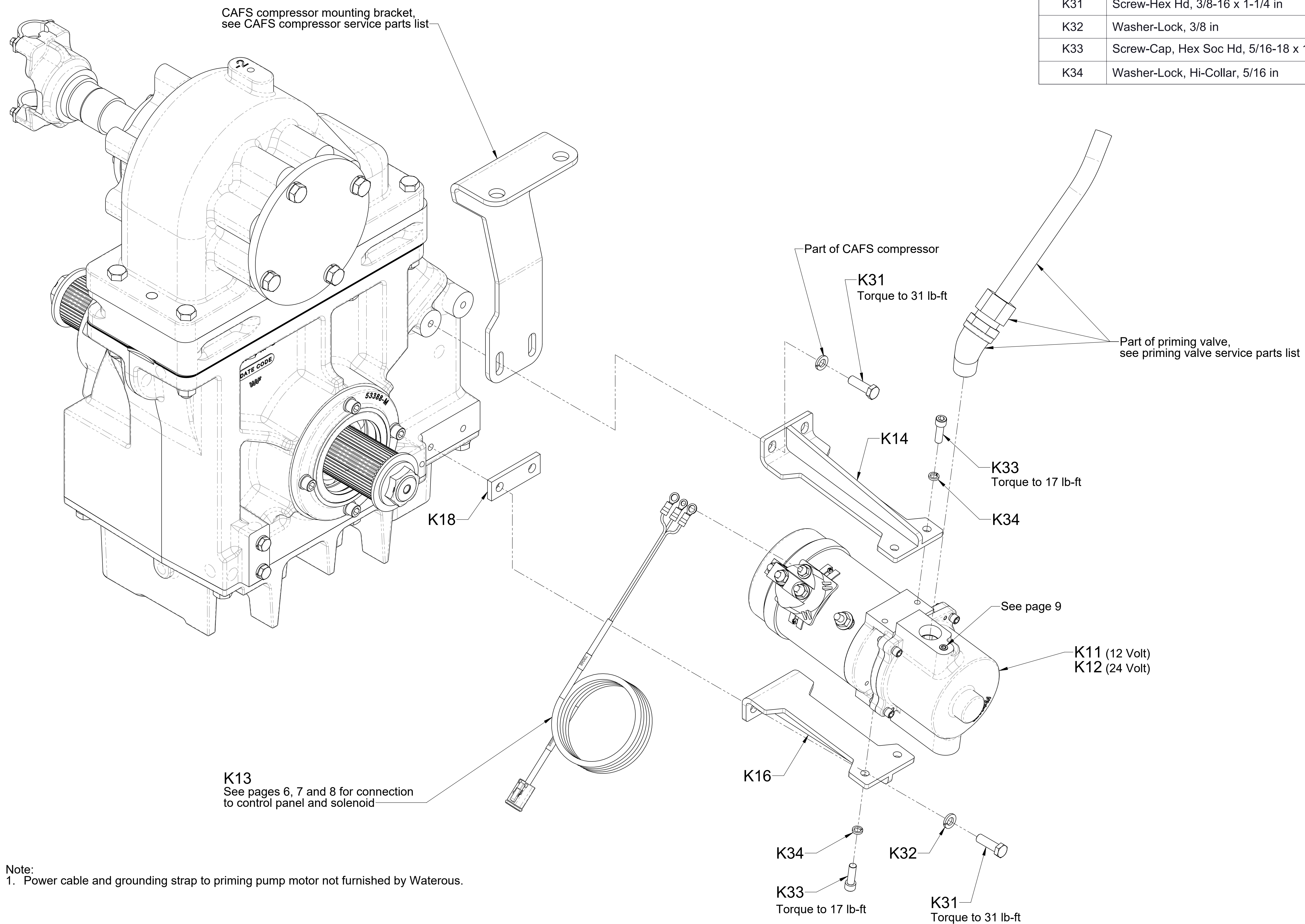


Ref No.	Description
K11	Primer Subassembly, 12 Volt
K12	Primer Subassembly, 24 Volt
K13	Cable-Extension
K14	Bracket-Upper, Angled Primer Mount
K16	Bracket-Lower, Angled Primer Mount
K19	Screw-Hex Hd, 3/8-16 x 1 in
K32	Washer-Lock, 3/8 in
K33	Screw-Cap, Hex Soc Hd, 5/16-18 x 1 in
K34	Washer-Lock, Hi-Collar, 5/16 in



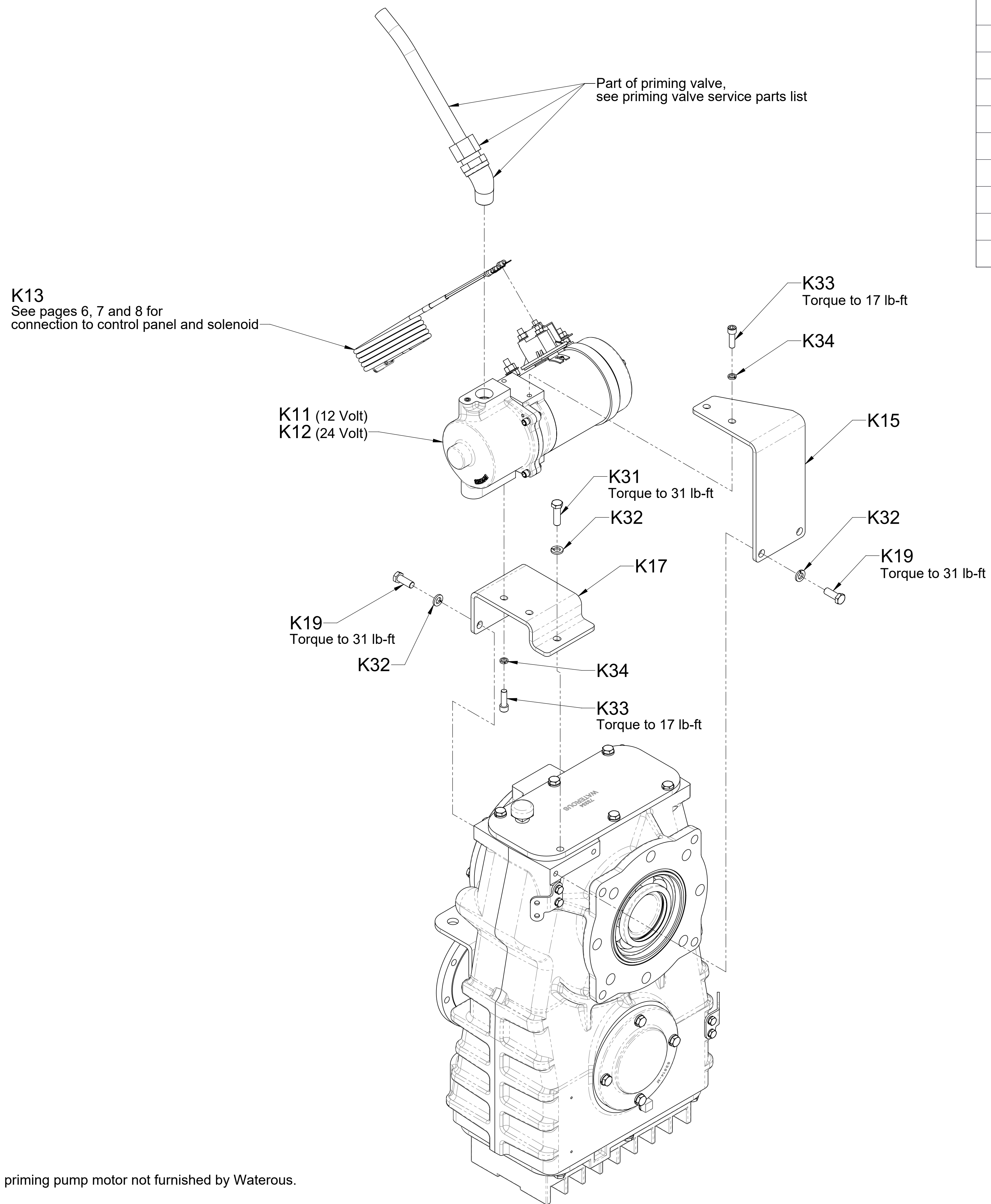
- Notes:
1. Power cable and grounding strap to priming pump motor not furnished by Waterous.
 2. See page 3 for configurations with a mounted CAFS compressor.

Ref No.	Description
K11	Primer Subassembly, 12 Volt
K12	Primer Subassembly, 24 Volt
K13	Cable-Extension
K14	Bracket-Upper, Angled Primer Mount
K16	Bracket-Lower, Angled Primer Mount
K18	Spacer-Bracket, Primer
K31	Screw-Hex Hd, 3/8-16 x 1-1/4 in
K32	Washer-Lock, 3/8 in
K33	Screw-Cap, Hex Soc Hd, 5/16-18 x 1 in
K34	Washer-Lock, Hi-Collar, 5/16 in



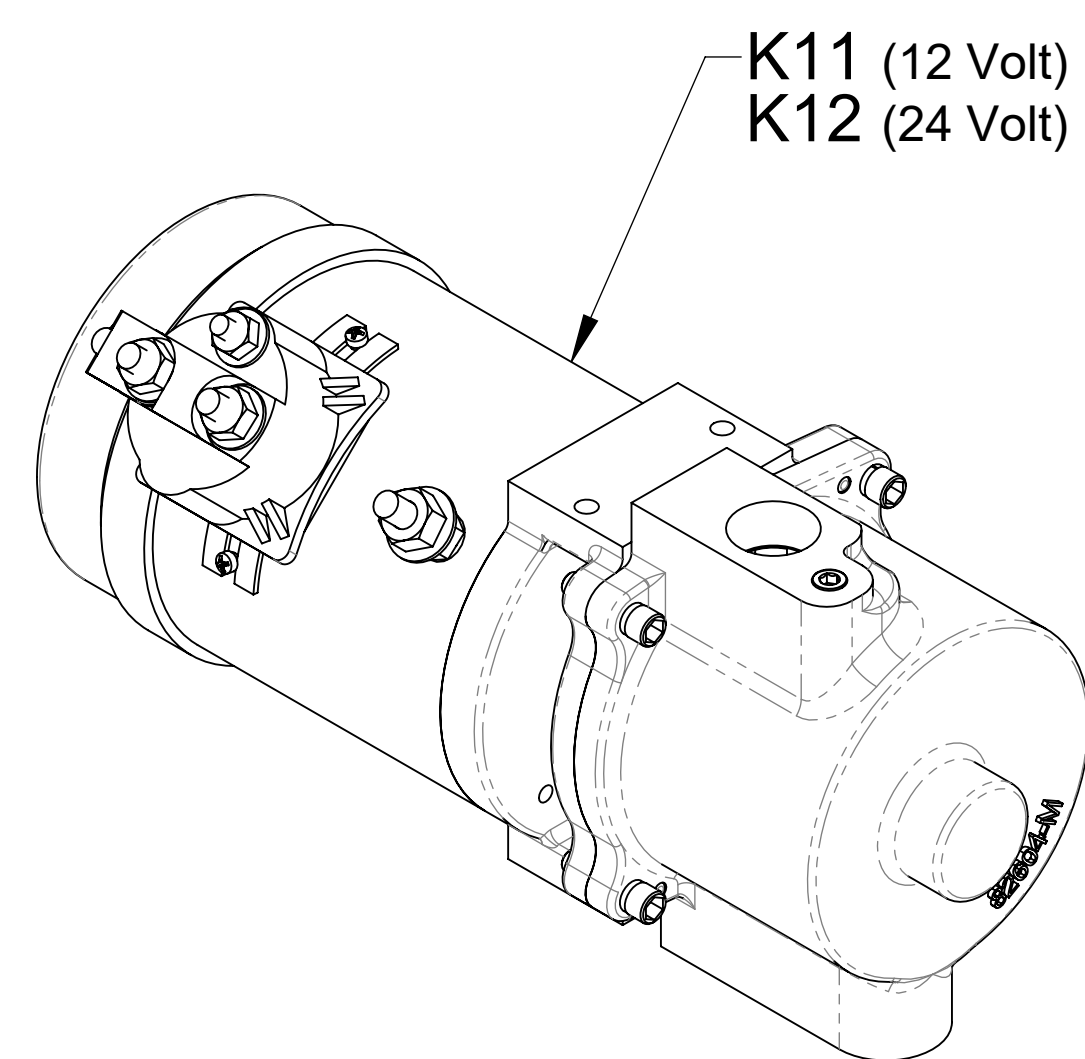
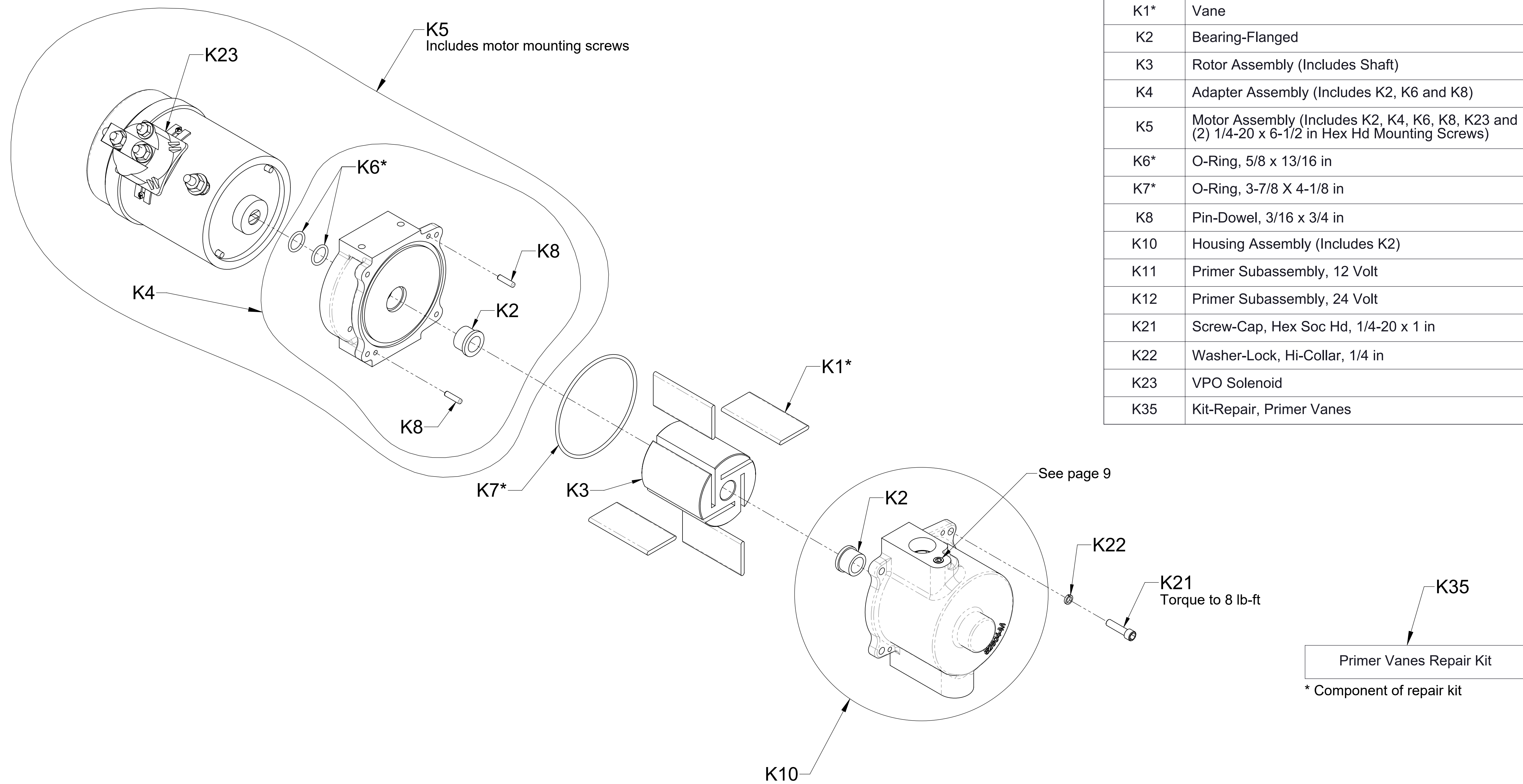
Note:
1. Power cable and grounding strap to priming pump motor not furnished by Waterous.

Ref No.	Description
K11	Primer Subassembly, 12 Volt
K12	Primer Subassembly, 24 Volt
K13	Cable-Extension
K15	Bracket-Mounting, Primer, Upper
K17	Bracket-Mounting, Primer, Lower
K19	Screw-Hex Hd, 3/8-16 x 1 in
K31	Screw-Hex Hd, 3/8-16 x 1-1/4 in
K32	Washer-Lock, 3/8 in
K33	Screw-Cap, Hex Soc Hd, 5/16-18 x 1 in
K34	Washer-Lock, Hi-Collar, 5/16 in

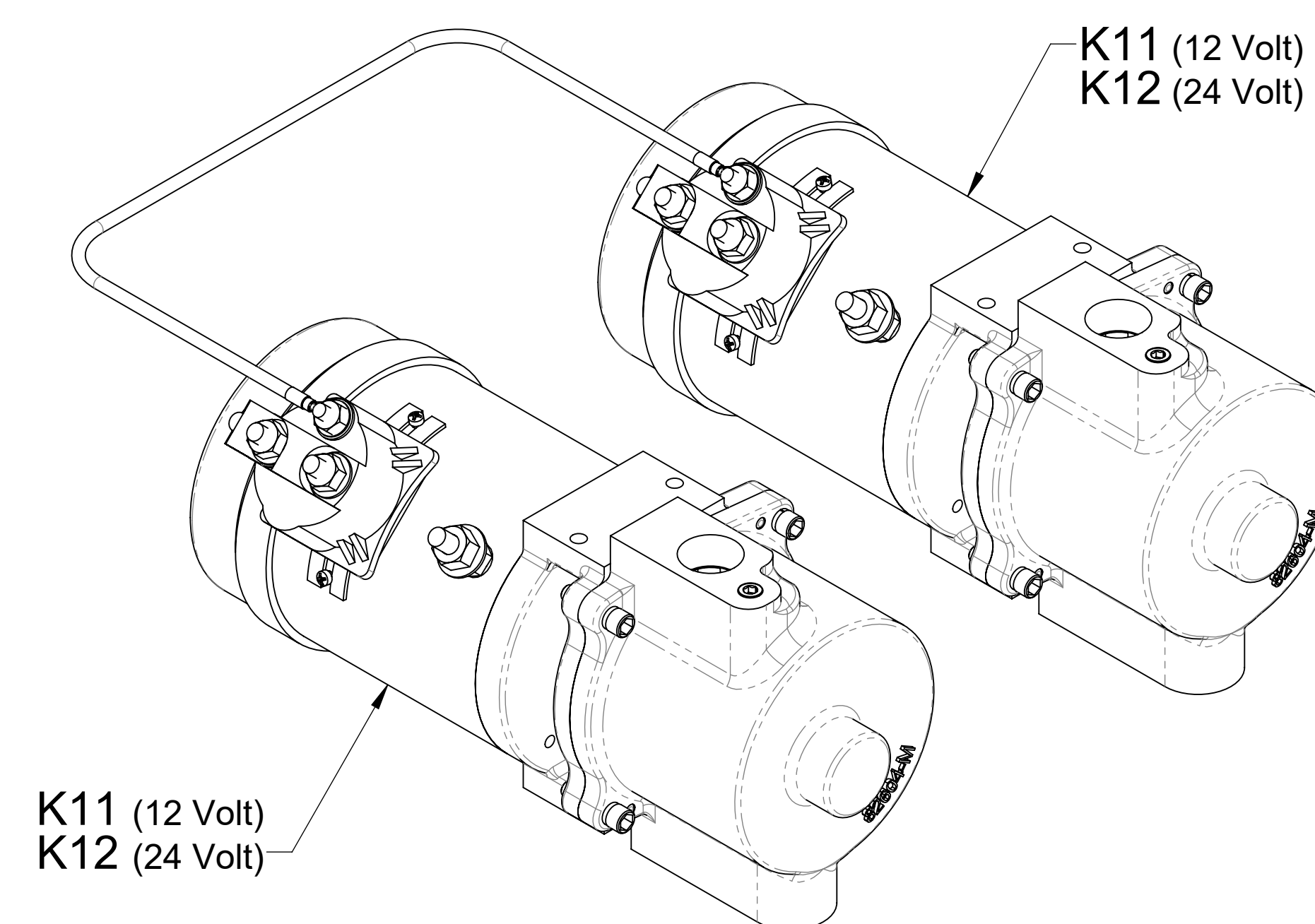


Note:
1. Power cable and grounding strap to priming pump motor not furnished by Waterous.

Ref No.	Description
K1*	Vane
K2	Bearing-Flanged
K3	Rotor Assembly (Includes Shaft)
K4	Adapter Assembly (Includes K2, K6 and K8)
K5	Motor Assembly (Includes K2, K4, K6, K8, K23 and (2) 1/4-20 x 6-1/2 in Hex Hd Mounting Screws)
K6*	O-Ring, 5/8 x 13/16 in
K7*	O-Ring, 3-7/8 X 4-1/8 in
K8	Pin-Dowel, 3/16 x 3/4 in
K10	Housing Assembly (Includes K2)
K11	Primer Subassembly, 12 Volt
K12	Primer Subassembly, 24 Volt
K21	Screw-Cap, Hex Soc Hd, 1/4-20 x 1 in
K22	Washer-Lock, Hi-Collar, 1/4 in
K23	VPO Solenoid
K35	Kit-Repair, Primer Vanes



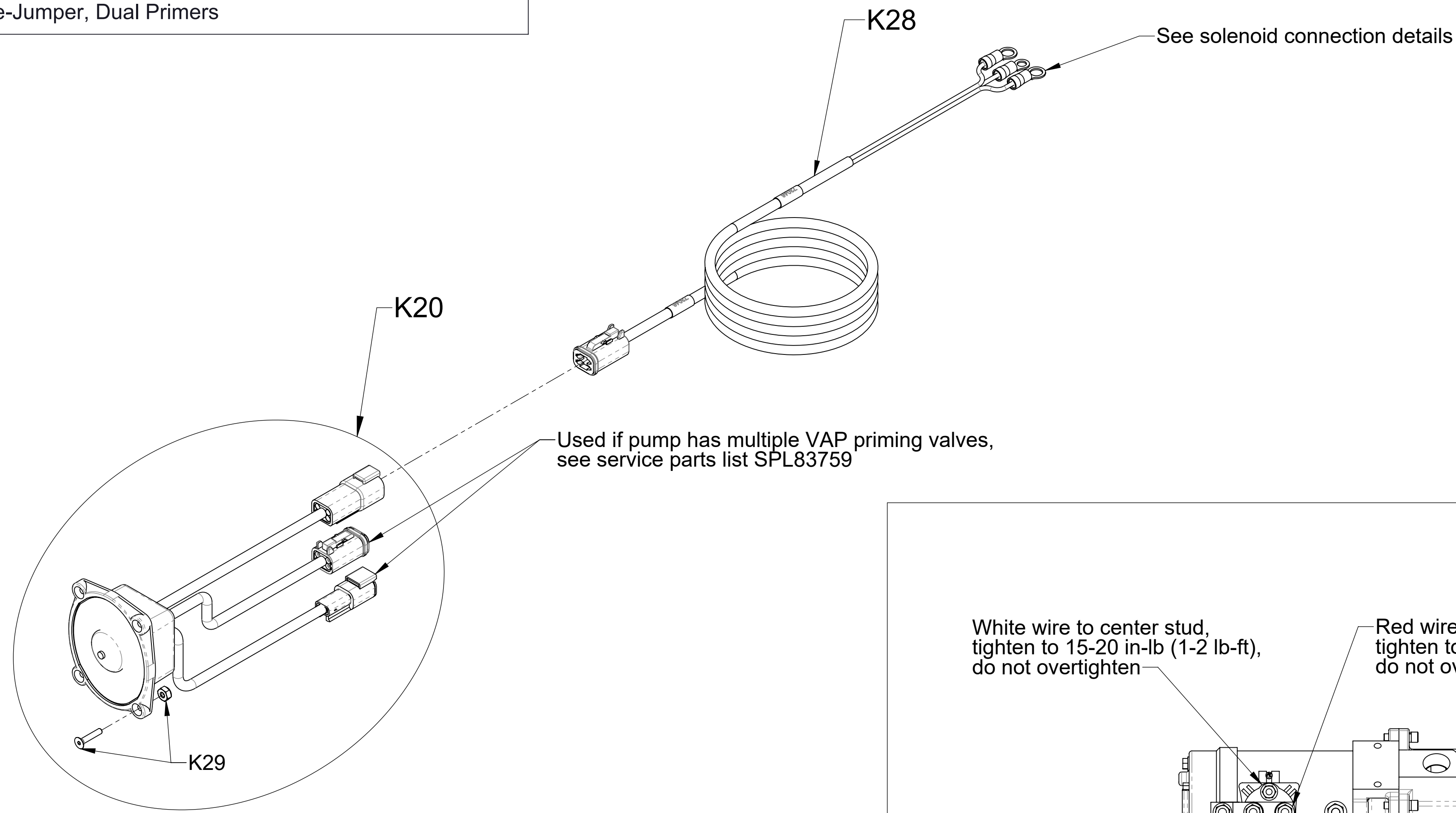
Single Primer



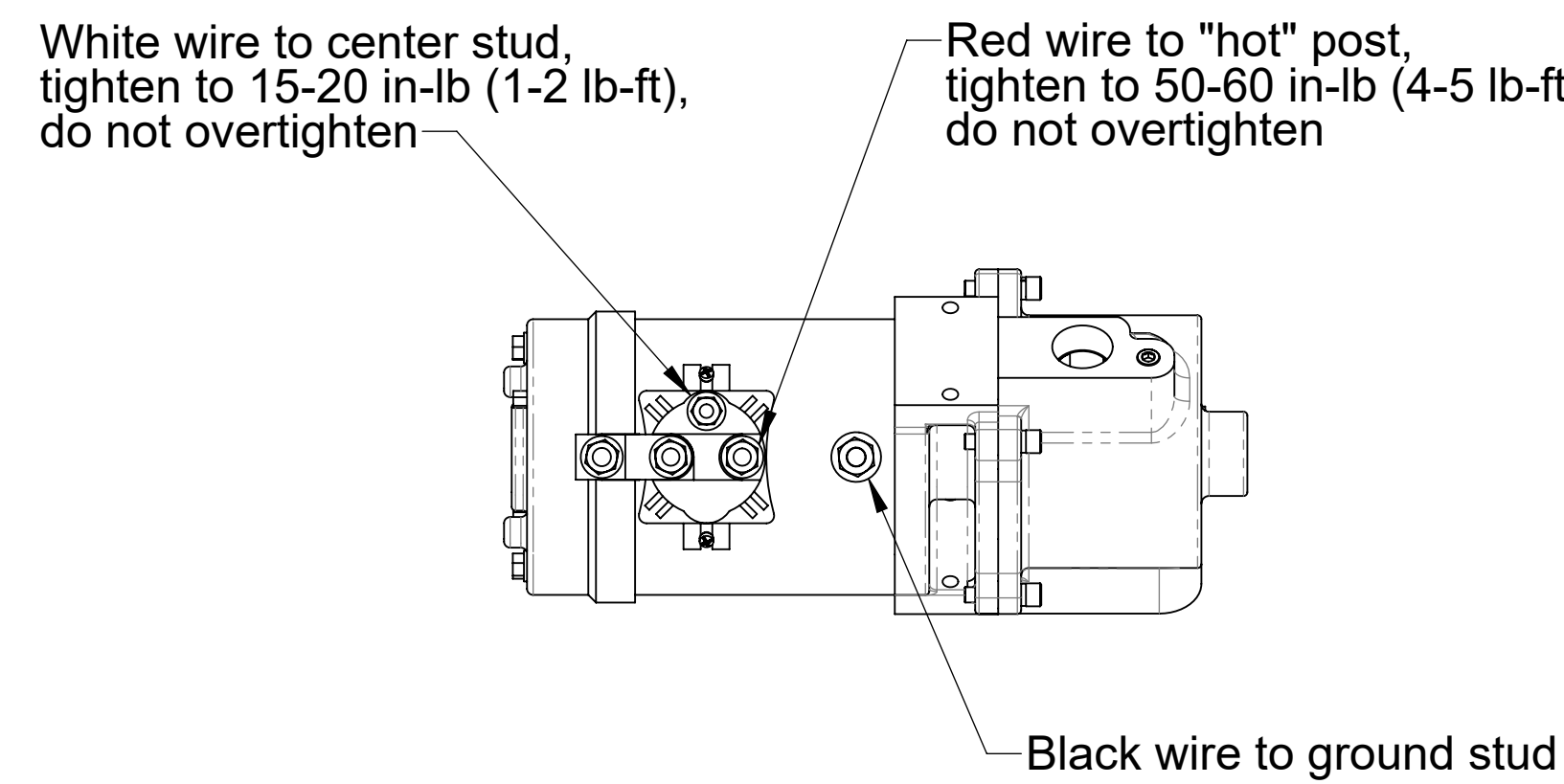
Dual Primers

Priming Pump Subassembly Components

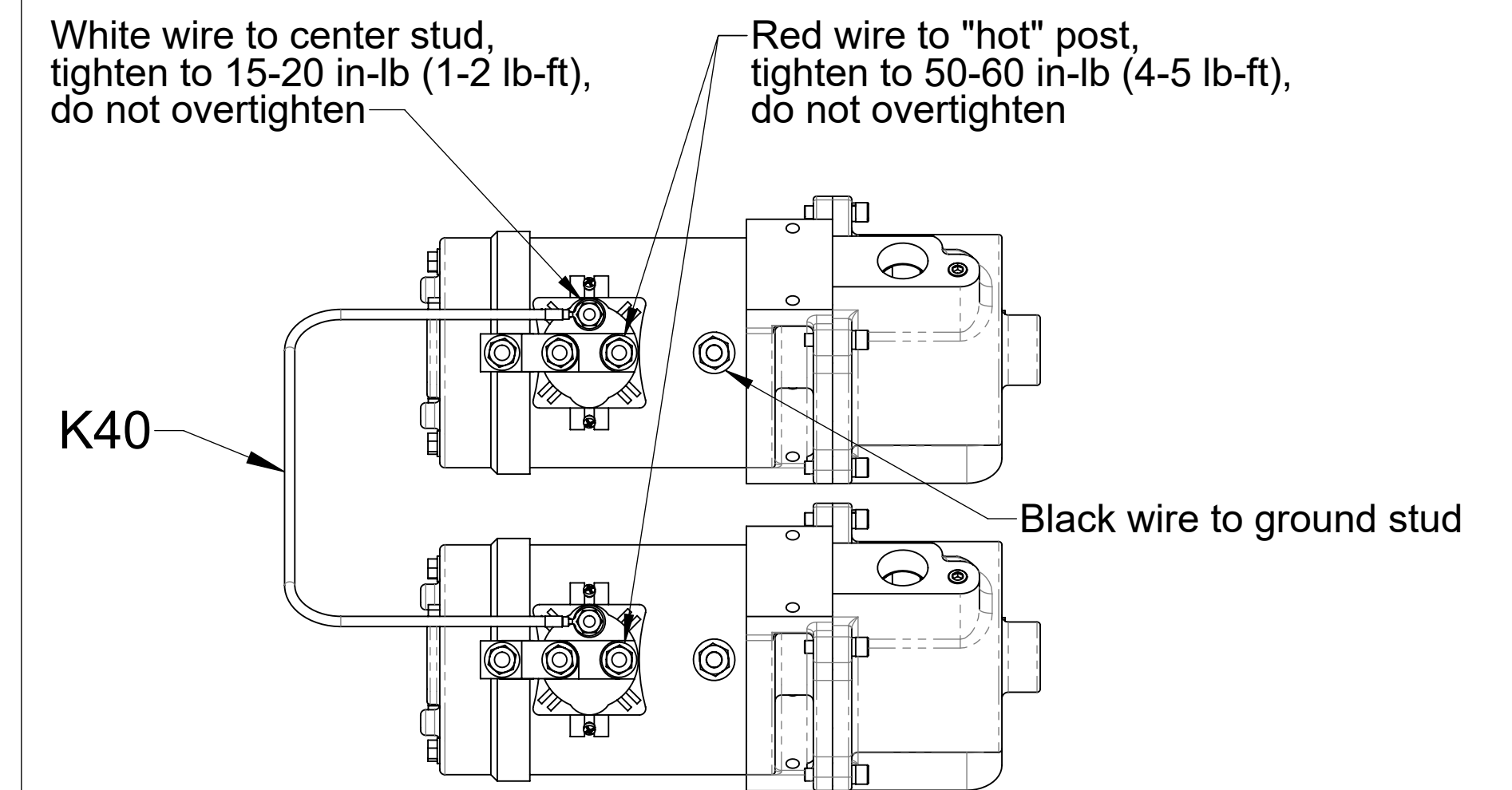
Ref No.	Description
K20	Panel Assembly (Includes K29 Fasteners)
K28	Cable-Extension
K29	Packet-Fasteners, Control Panel
K40	Wire-Jumper, Dual Primers



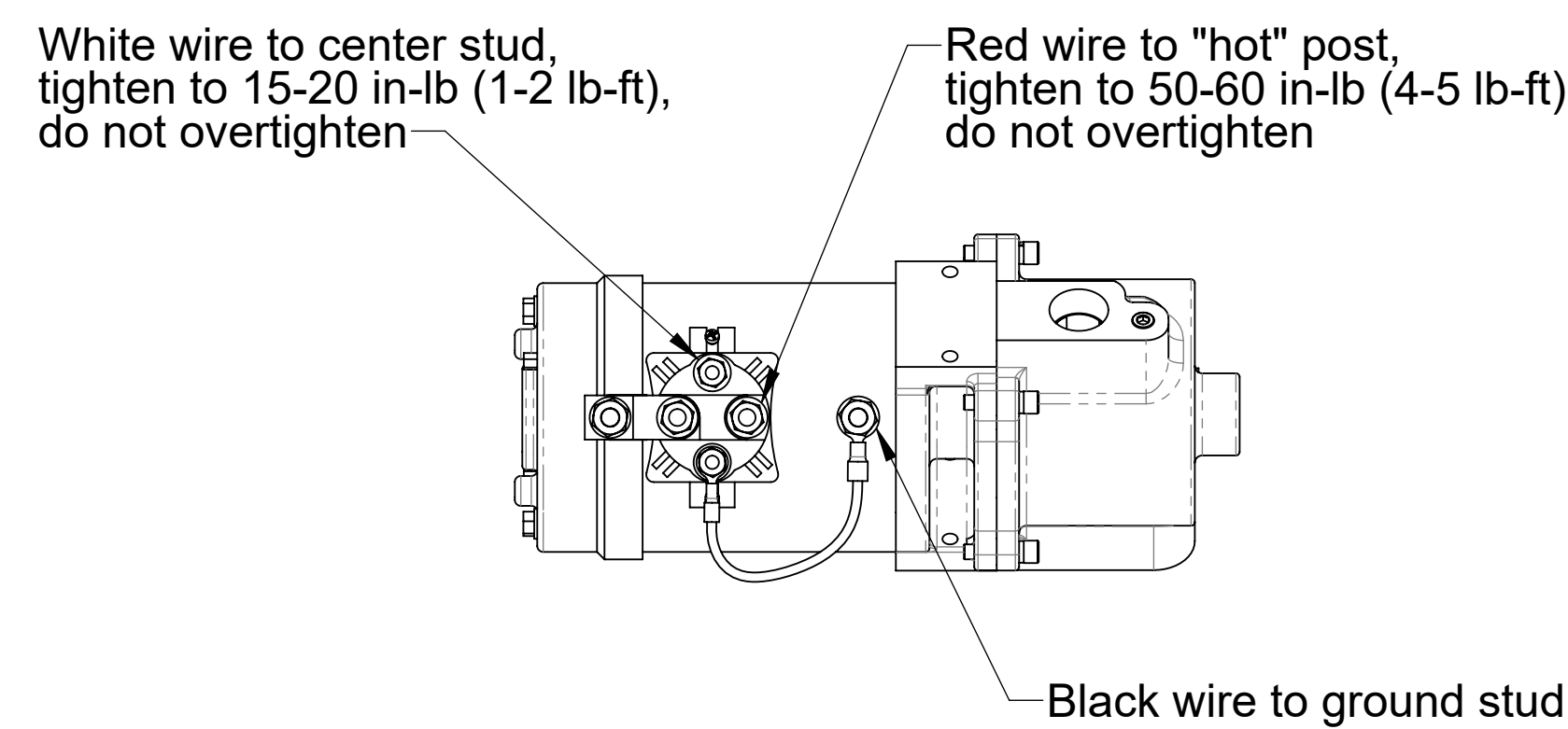
**Panel Switch and Wiring
Standard Push-Button Switch**



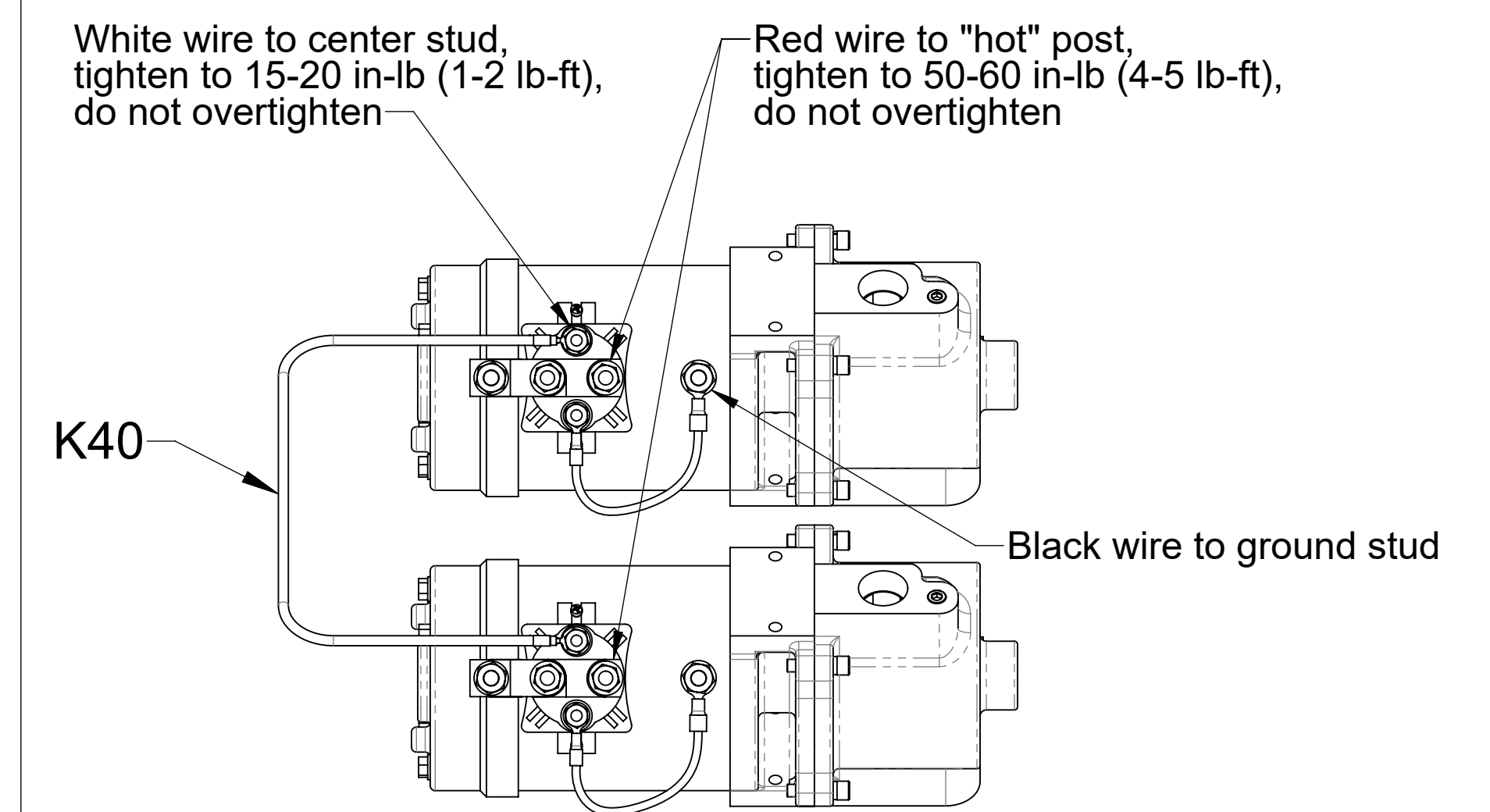
Wire Connection to 12V Solenoid



Wire Connection to Dual 12V Solenoids

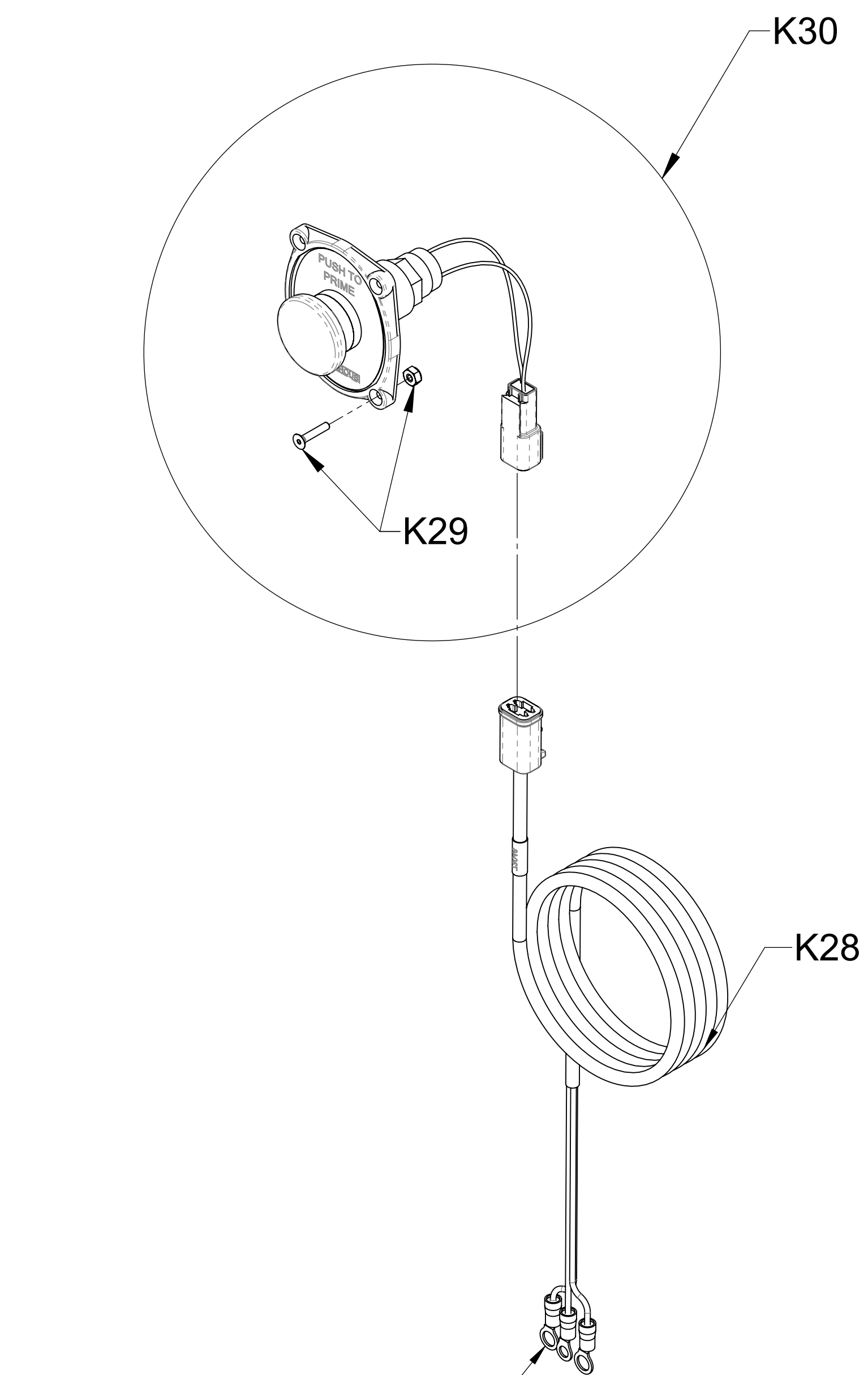


Wire Connection to 24V Solenoid



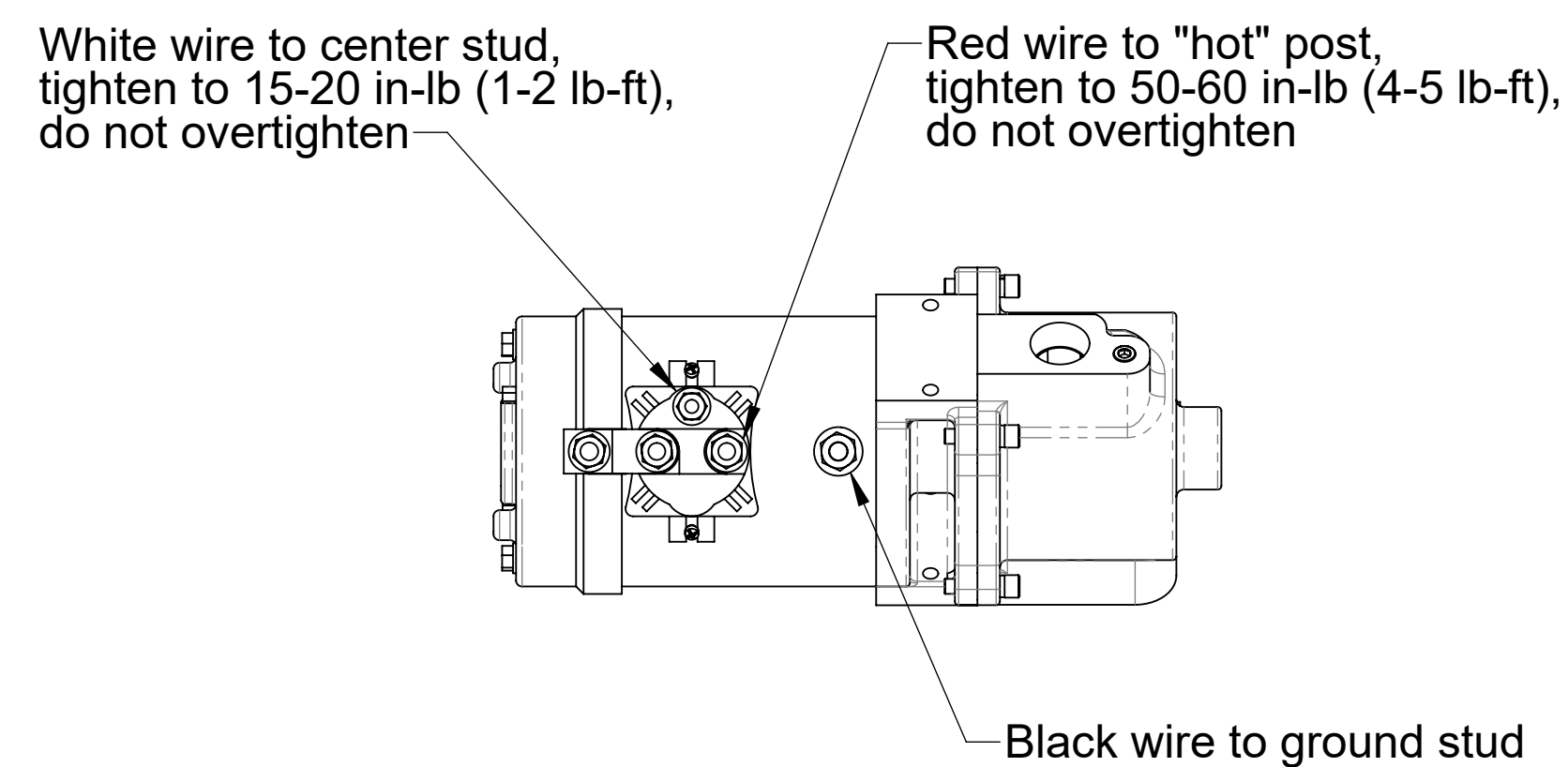
Wire Connection to Dual 24V Solenoids

Ref No.	Description
K28	Cable-Extension
K29	Packet-Fasteners, Control Panel
K30	Panel Assembly (Includes K29 Fasteners)
K40	Wire-Jumper, Dual Primers

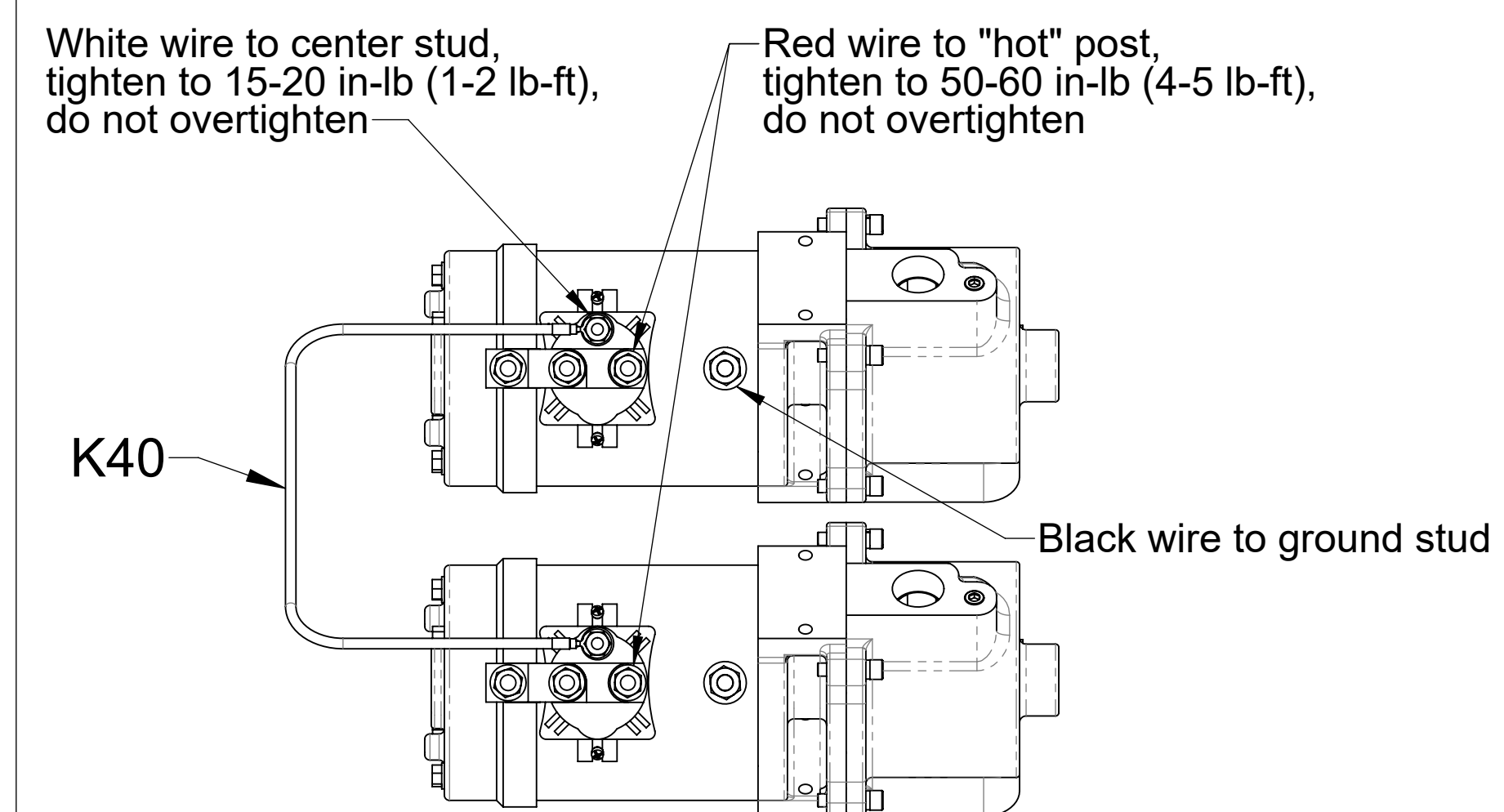


See solenoid connection details

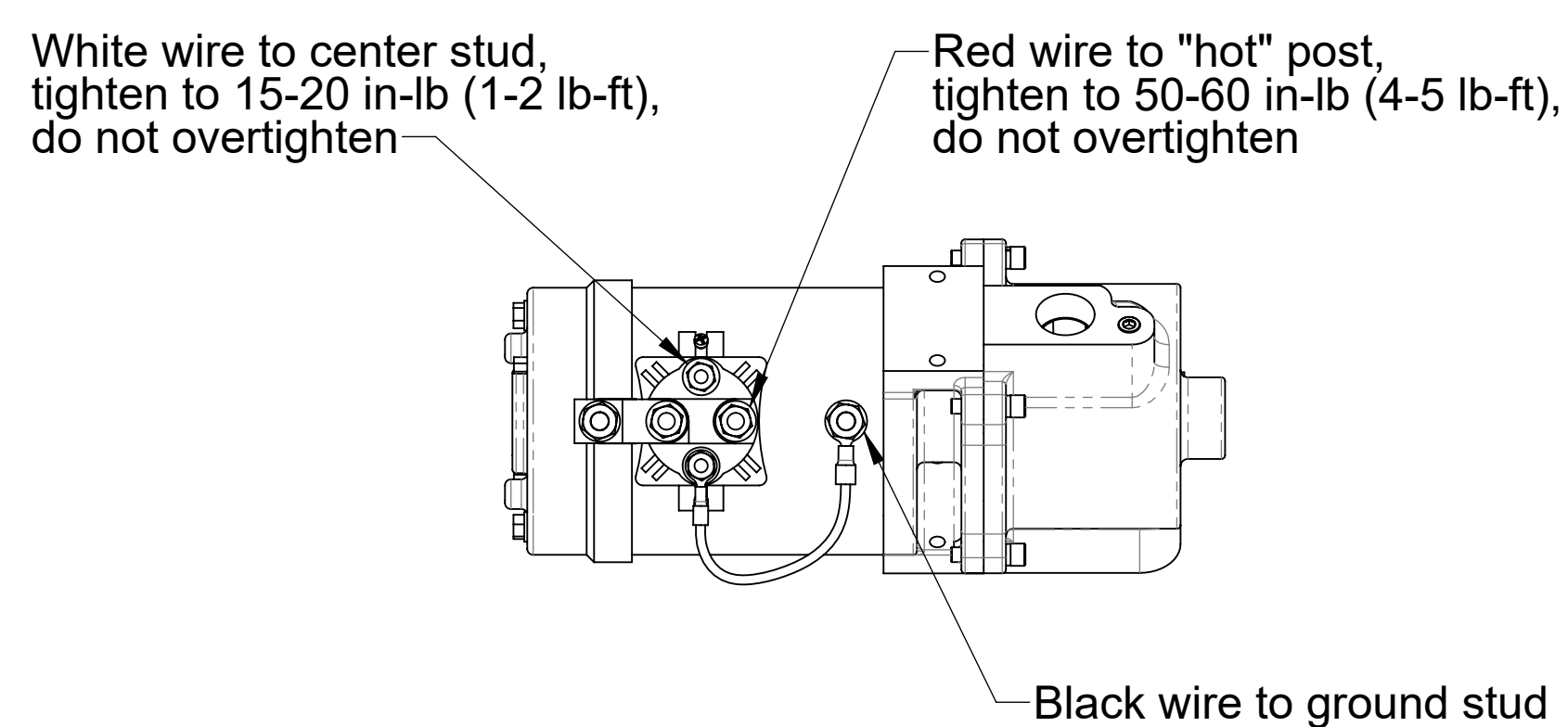
**Panel Switch and Wiring
Oversize Push-Button Switch**



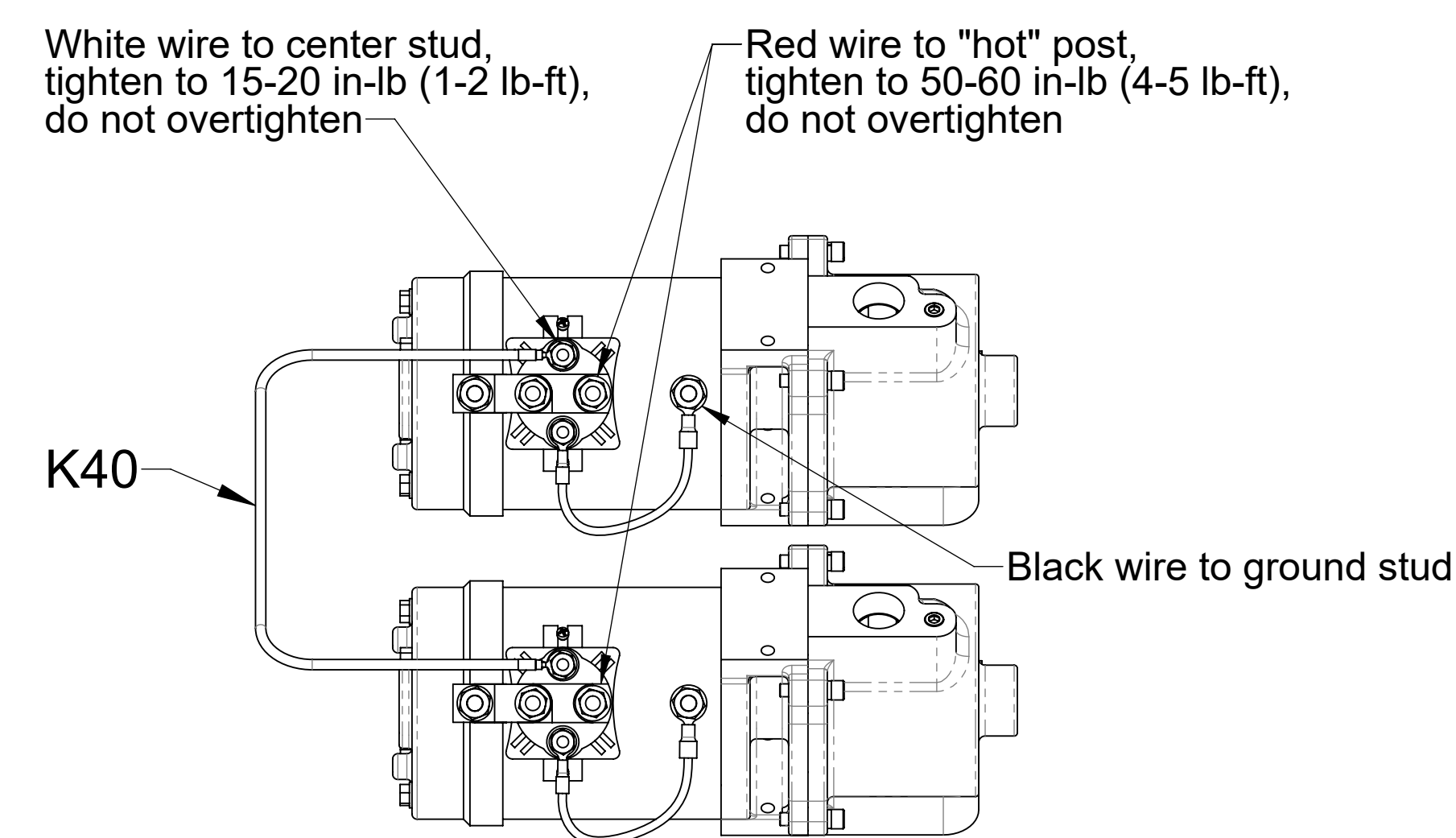
Wire Connection to 12V Solenoid



Wire Connection to Dual 12V Solenoids

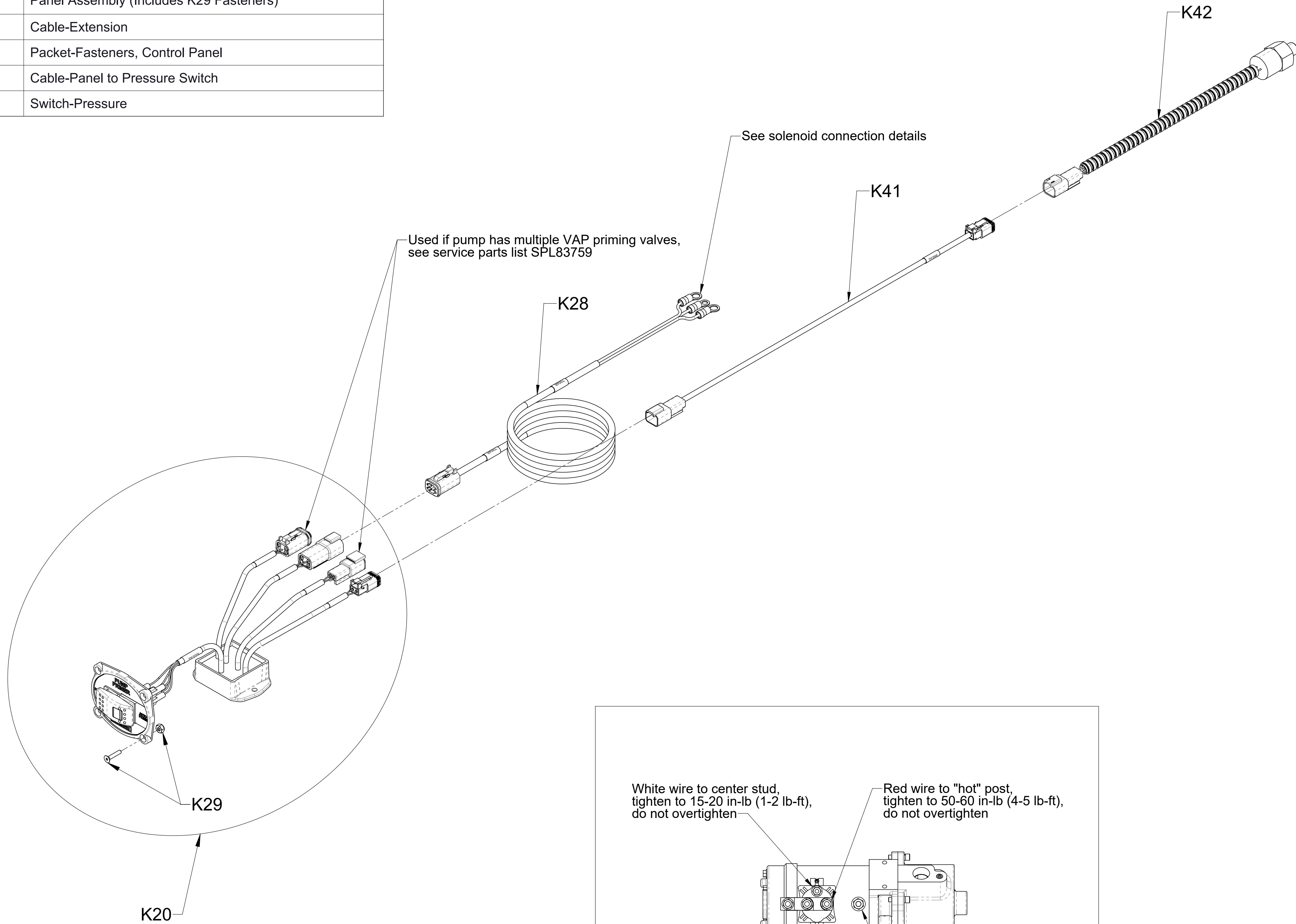


Wire Connection to 24V Solenoid

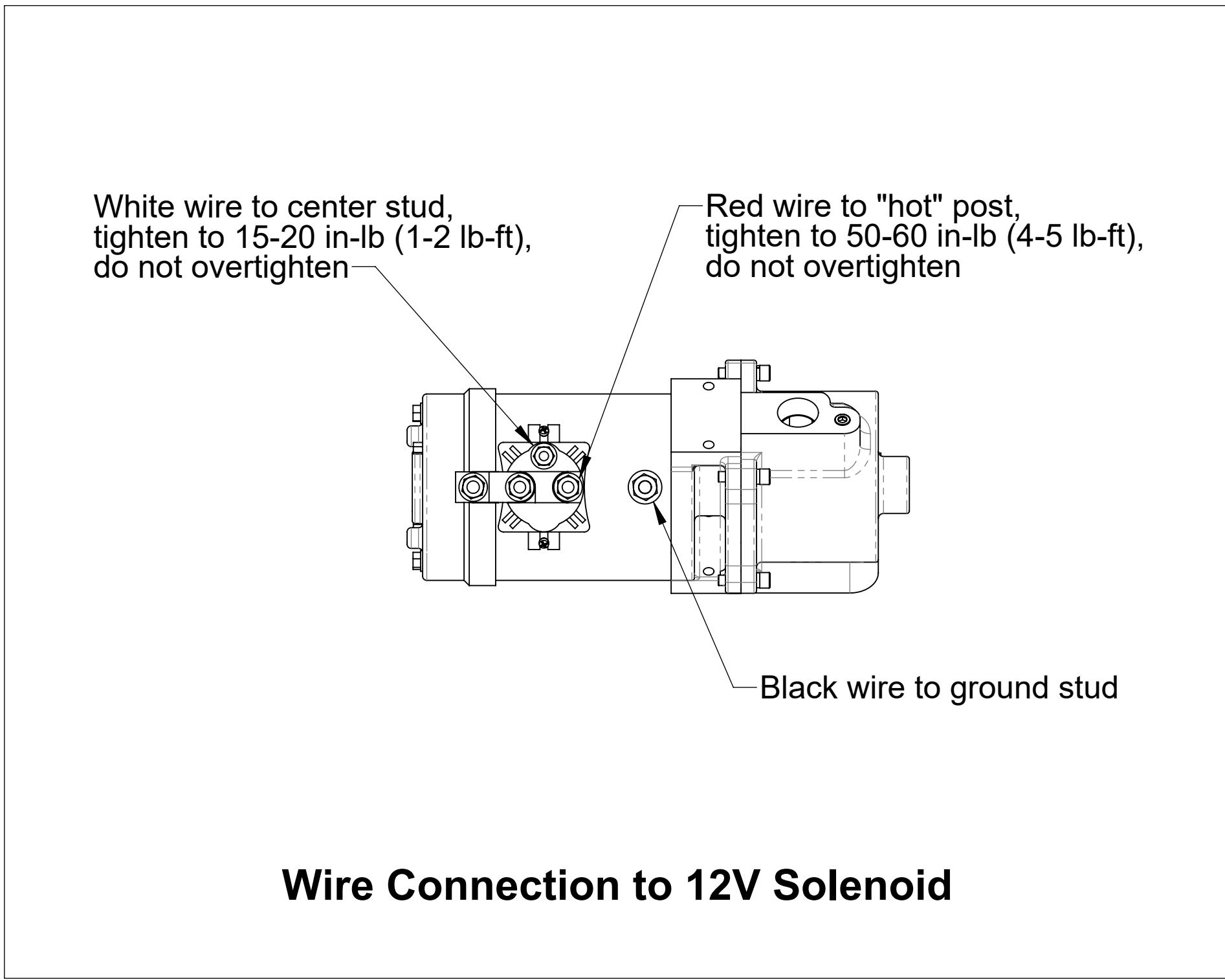


Wire Connection to Dual 24V Solenoids

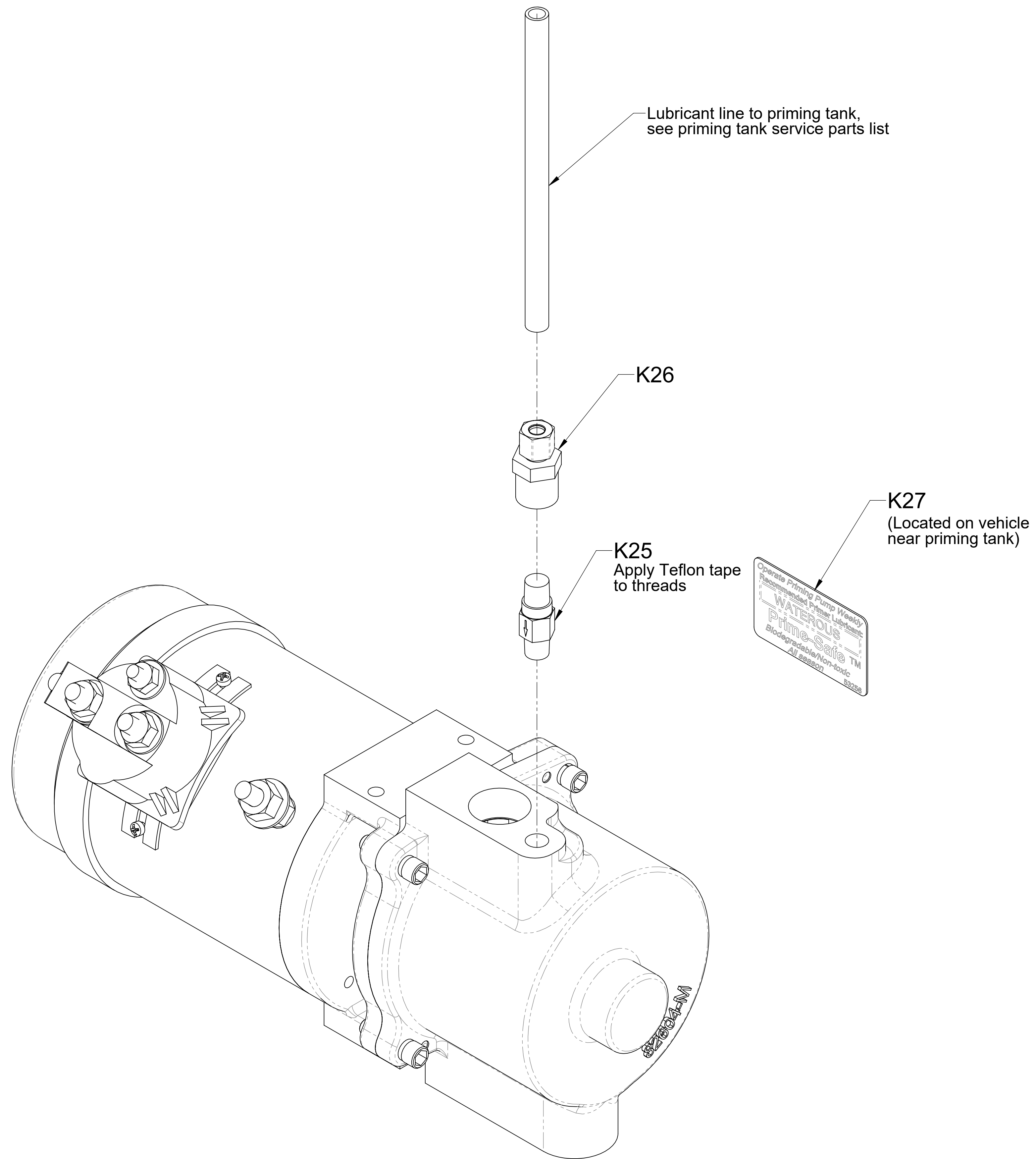
Ref No.	Description
K20	Panel Assembly (Includes K29 Fasteners)
K28	Cable-Extension
K29	Packet-Fasteners, Control Panel
K41	Cable-Panel to Pressure Switch
K42	Switch-Pressure



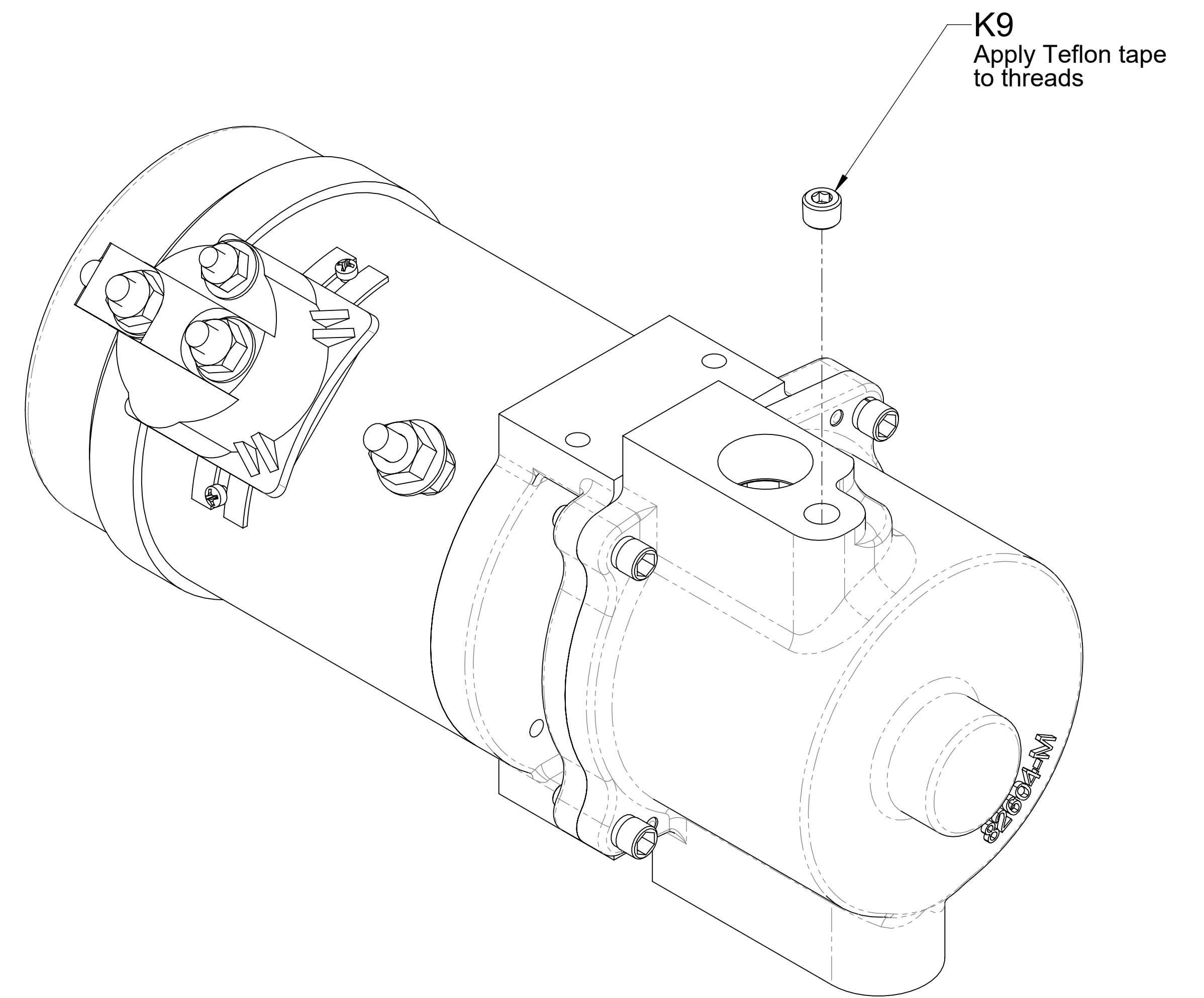
**Panel Switch and Wiring
Rocker Switch (Auto Prime)**



Ref No.	Description
K9	Plug-Pipe, Headless, 1/8 NPT
K25	Valve-Check, 1/8 NPT
K26	Connector-Female, 1/4 in Tube
K27	Decal-Lubricant Prime-Safe



Configuration when Used



Configuration when not Used

Ref No.	Description
K43	Switch-Pressure, Low

