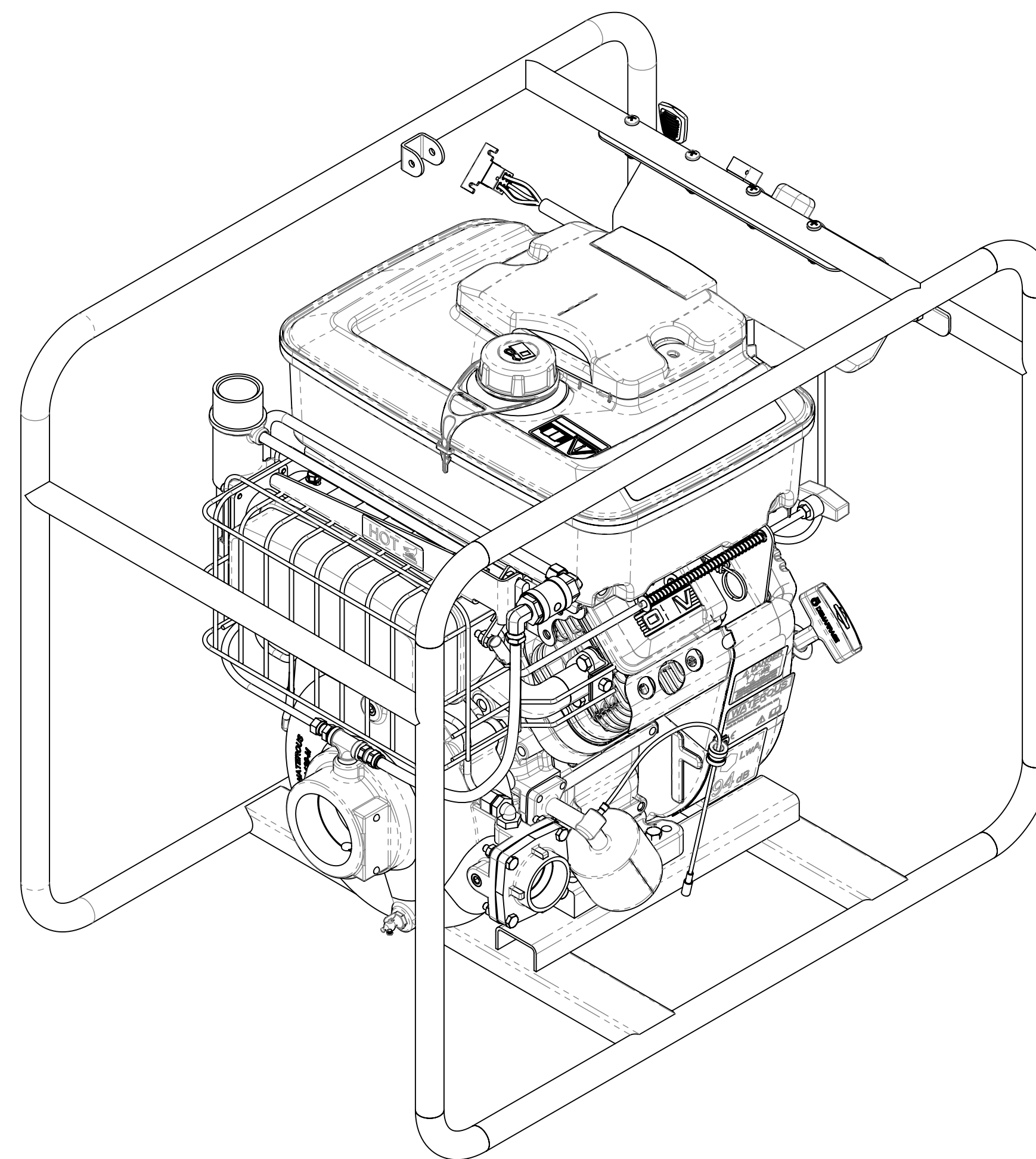
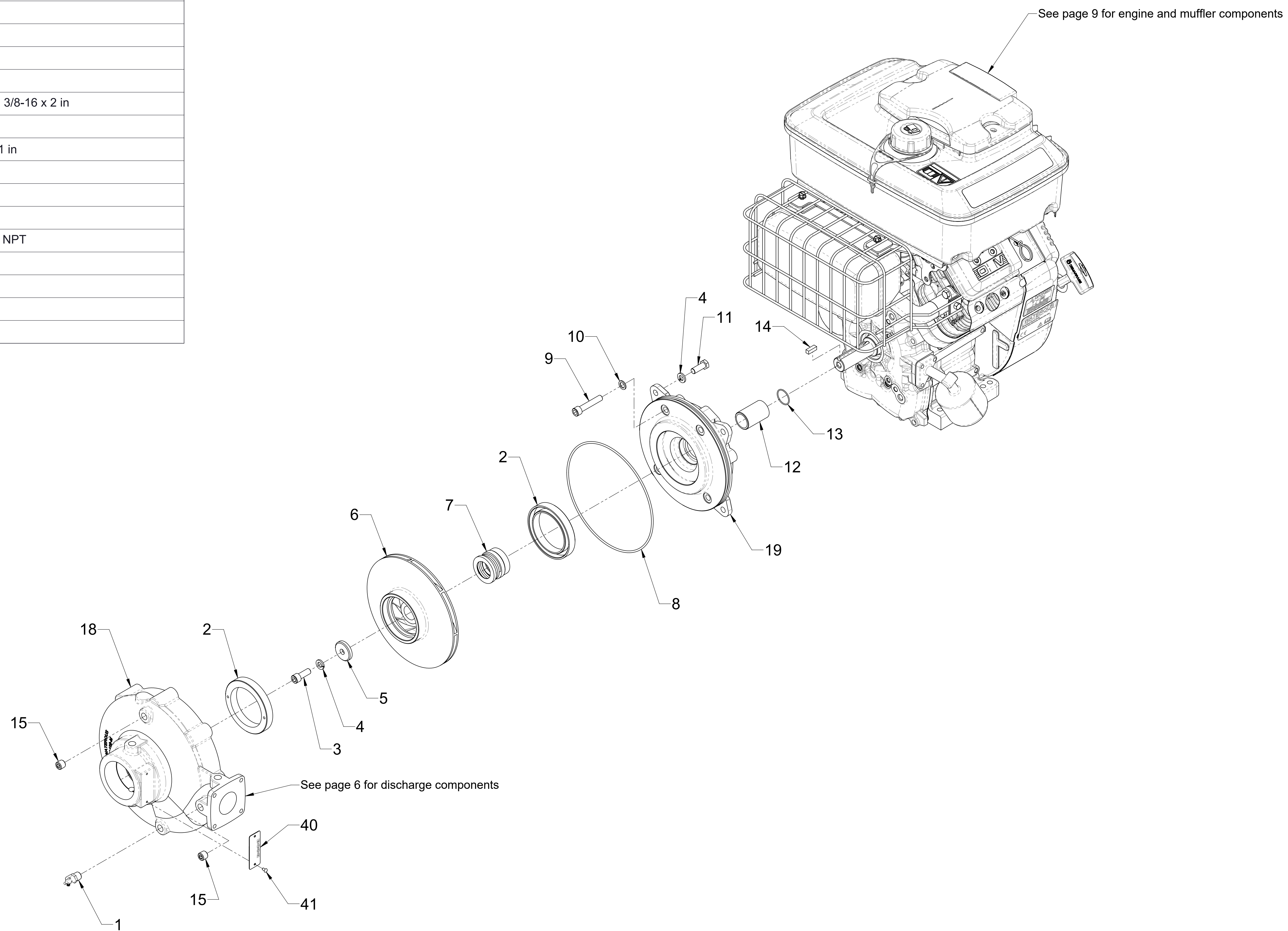


PB18 Series Direct Drive Portable Pump Service Parts List

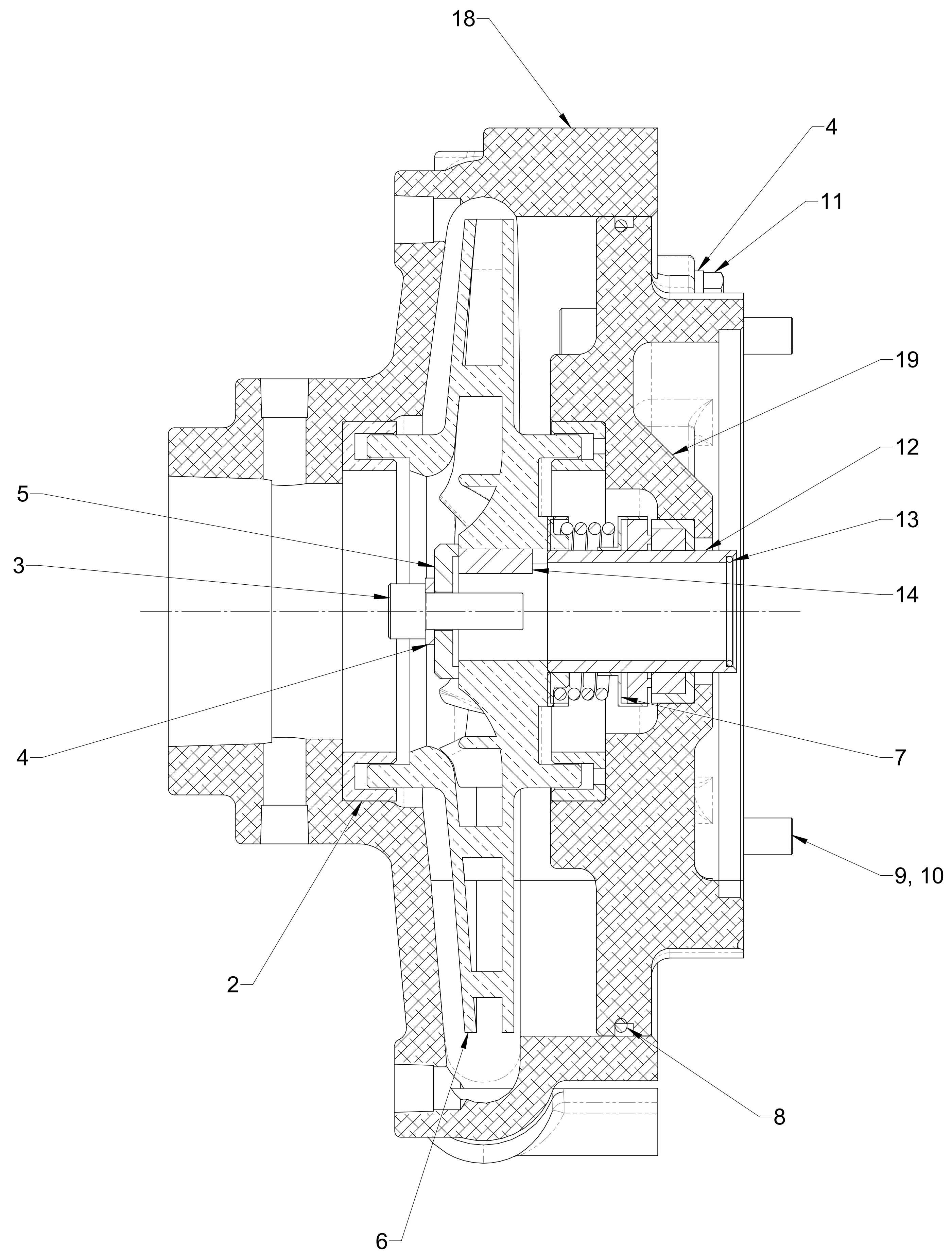
Component	Pump Model (Located on Serial Plate)	See Page		
		Exploded View		Pump Cross-Section View
		Pump	Discharge	
Pump	PB18-2515B	2	6	3
	PB18-2515F	2	6	3
	PB18-3030C	4	7	5
	PB18-3030E	4	7	5
	PB18-4025B	4	8	5
Engine and Muffler	All	9		
With or Without Exhaust Primer	All	10		
With Instrument Panel	All	11		
Without Instrument Panel	All	12		
Wrap-Around Base	All Except 3030E	13		
Rail Base	All	14		
No Base	All	14		
Wiring Schematic	All	15		



Ref No.	Description
1	Cock-Drain
2	Ring-Wear
3	Screw-Cap, Hex Soc Hd, 3/8-24 x 1 in
4	Washer-Lock, 3/8 in
5	Washer-Impeller
6	Impeller
7	Seal-Mechanical
8	O-Ring, 7-3/4 x 8 in
9	Screw-Cap, Hex Soc Hd, 3/8-16 x 2 in
10	Washer-Flat, 3/8 in
11	Screw-Hex Hd, 3/8-16 x 1 in
12	Sleeve-Shaft
13	O-Ring, 1 x 1-1/8 in
14	Key-Square, 1/4 x 3/4 in
15	Plug-Pipe, Headless, 1/4 NPT
18	Body-Volute
19	Adapter-Engine
40	Plate-Serial
41	Screw-Drive, #6 x 1/4 in

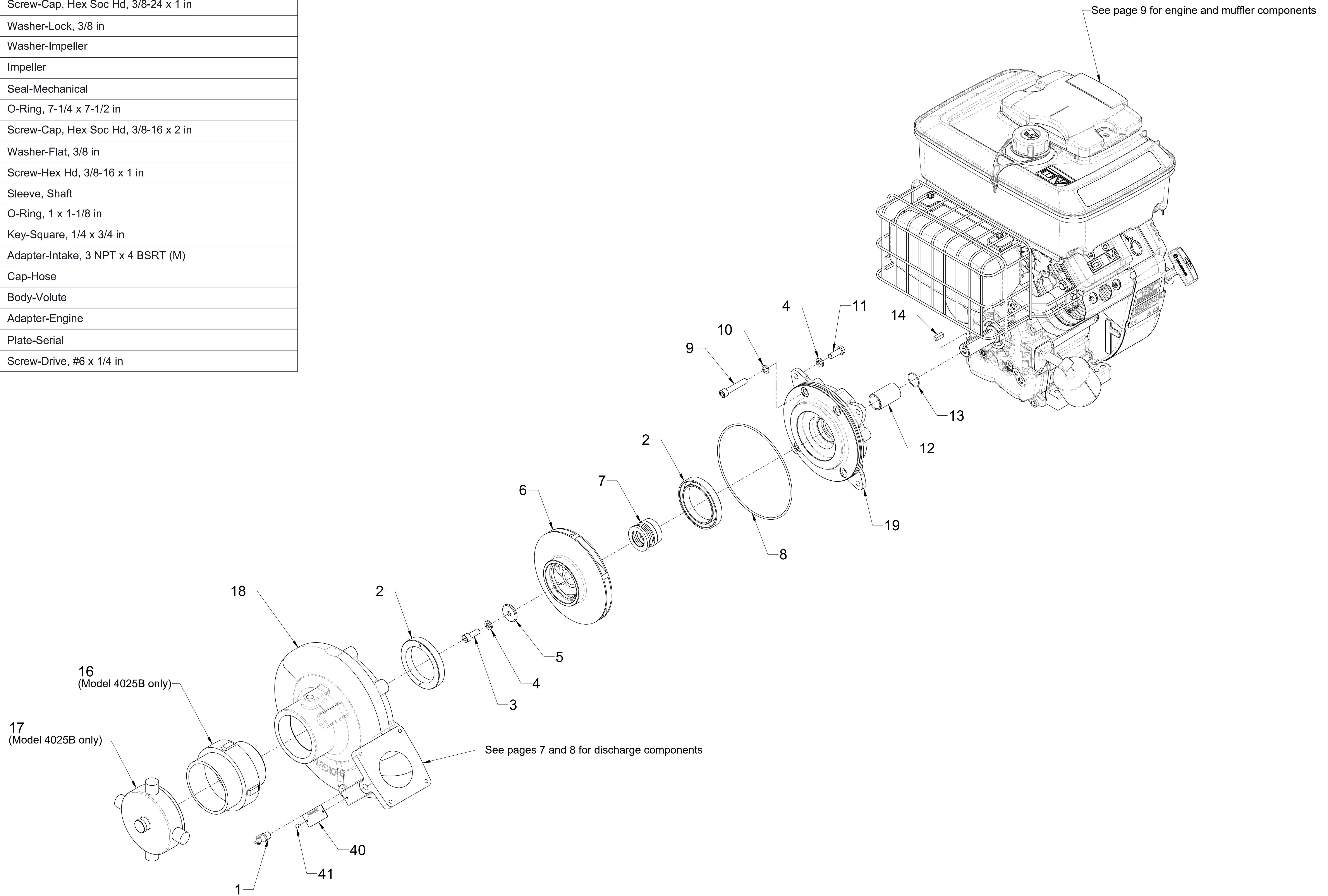


Models 2515B and 2515F Pump Components

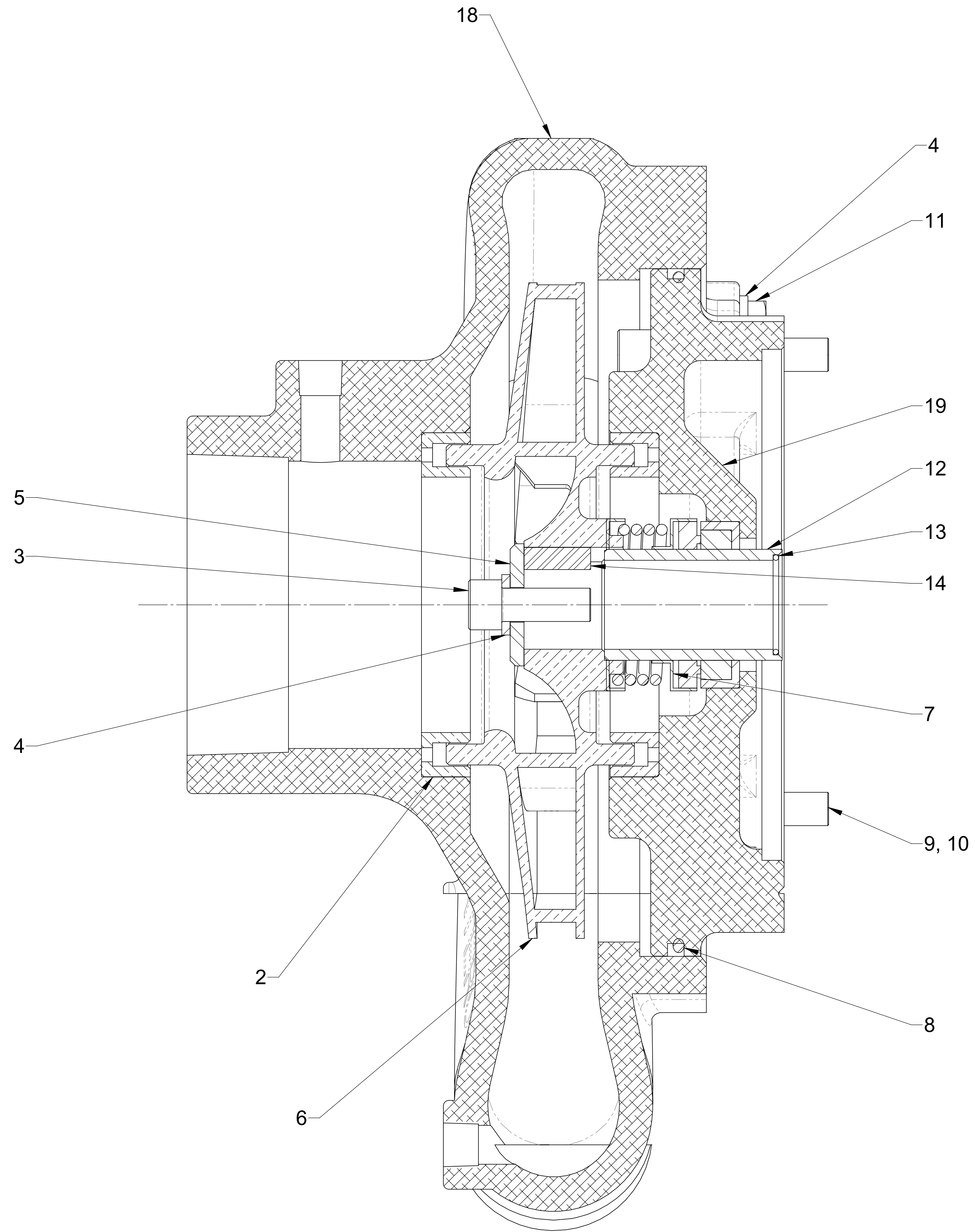


Models 2515B and 2515F Pump Cross-Section View
(See page 2 for part descriptions)

Ref No.	Description
1	Cock-Drain
2	Ring-Wear
3	Screw-Cap, Hex Soc Hd, 3/8-24 x 1 in
4	Washer-Lock, 3/8 in
5	Washer-Impeller
6	Impeller
7	Seal-Mechanical
8	O-Ring, 7-1/4 x 7-1/2 in
9	Screw-Cap, Hex Soc Hd, 3/8-16 x 2 in
10	Washer-Flat, 3/8 in
11	Screw-Hex Hd, 3/8-16 x 1 in
12	Sleeve, Shaft
13	O-Ring, 1 x 1-1/8 in
14	Key-Square, 1/4 x 3/4 in
16	Adapter-Intake, 3 NPT x 4 BSRT (M)
17	Cap-Hose
18	Body-Volute
19	Adapter-Engine
40	Plate-Serial
41	Screw-Drive, #6 x 1/4 in

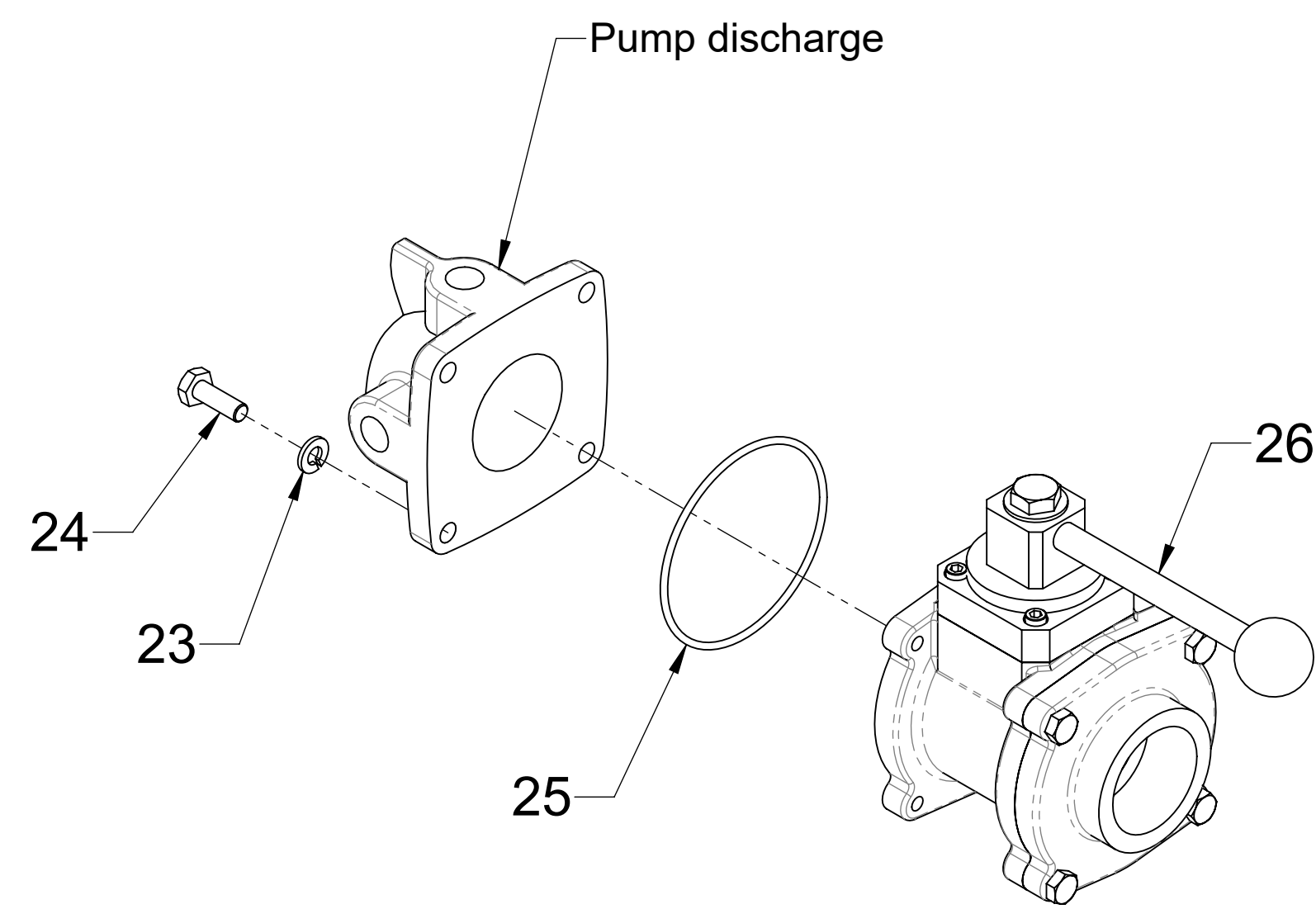


Models 3030C, 3030E and 4025B Pump Components

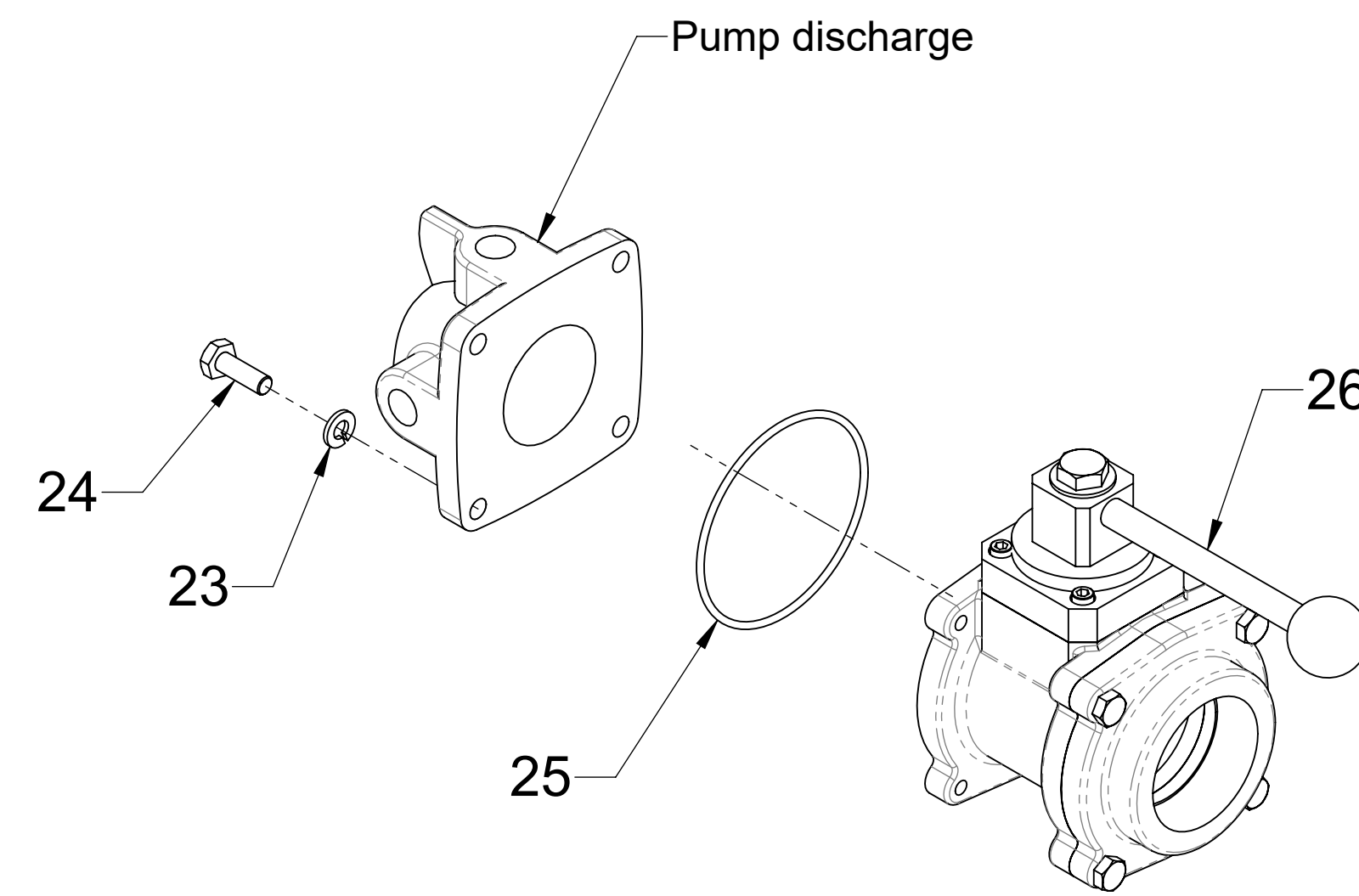


Models 3030C, 3030E and 4025B Pump Cross-Section View
(See page 4 for part descriptions)

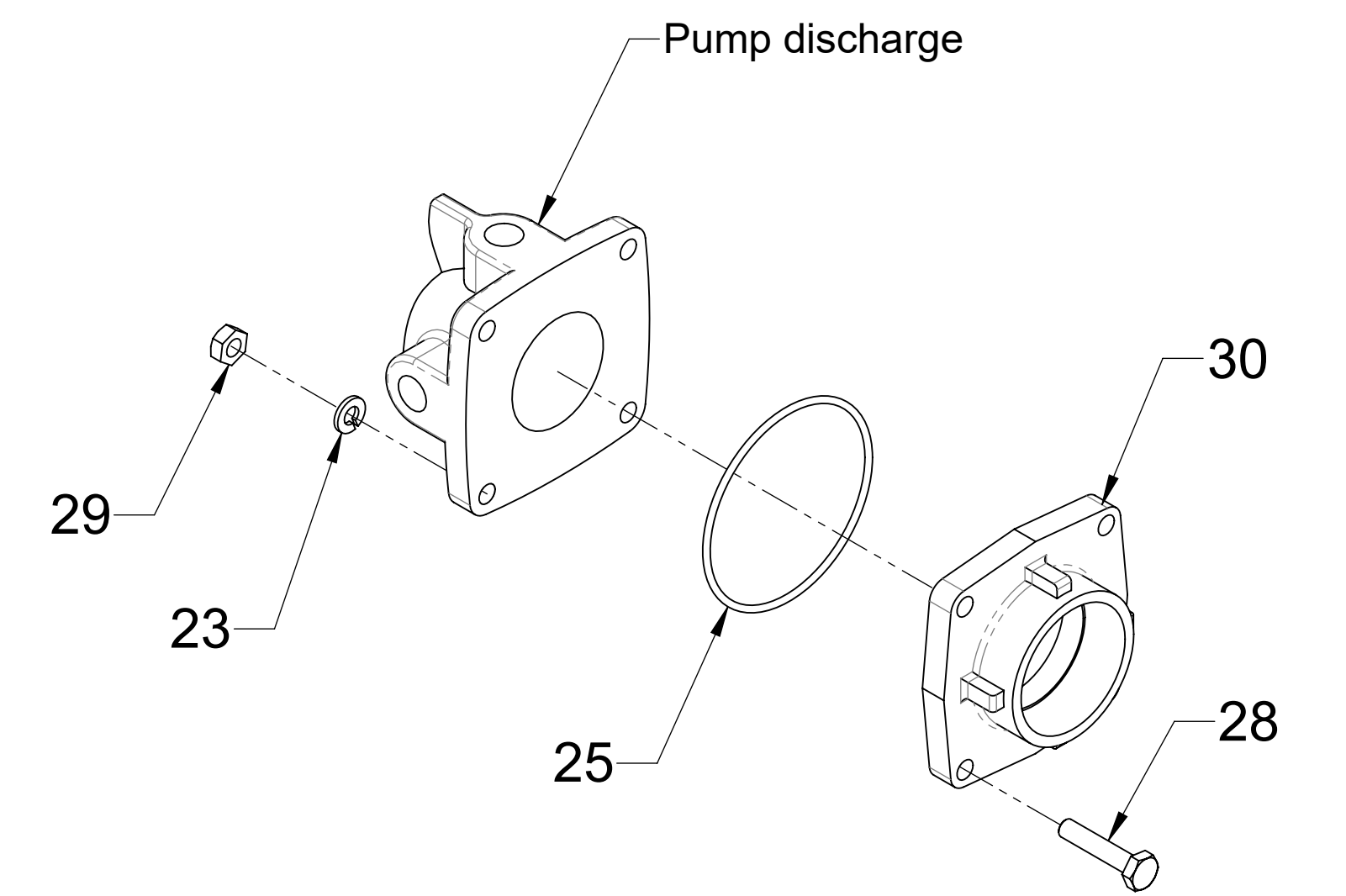
Ref No.	Description
23	Washer-Lock, 1/4 in
24	Screw-Hex Hd, 1/4-20 x 3/4 in
25	O-Ring, 2-3/4 x 2-15/16 in
26	Valve-Ball
28	Screw-Hex Hd, 1/4-20 x 1-1/4 in
29	Nut-Hex, 1/4-20
30	Adapter-Ball Valve



2515B with 1-1/2 NH (M) Connection



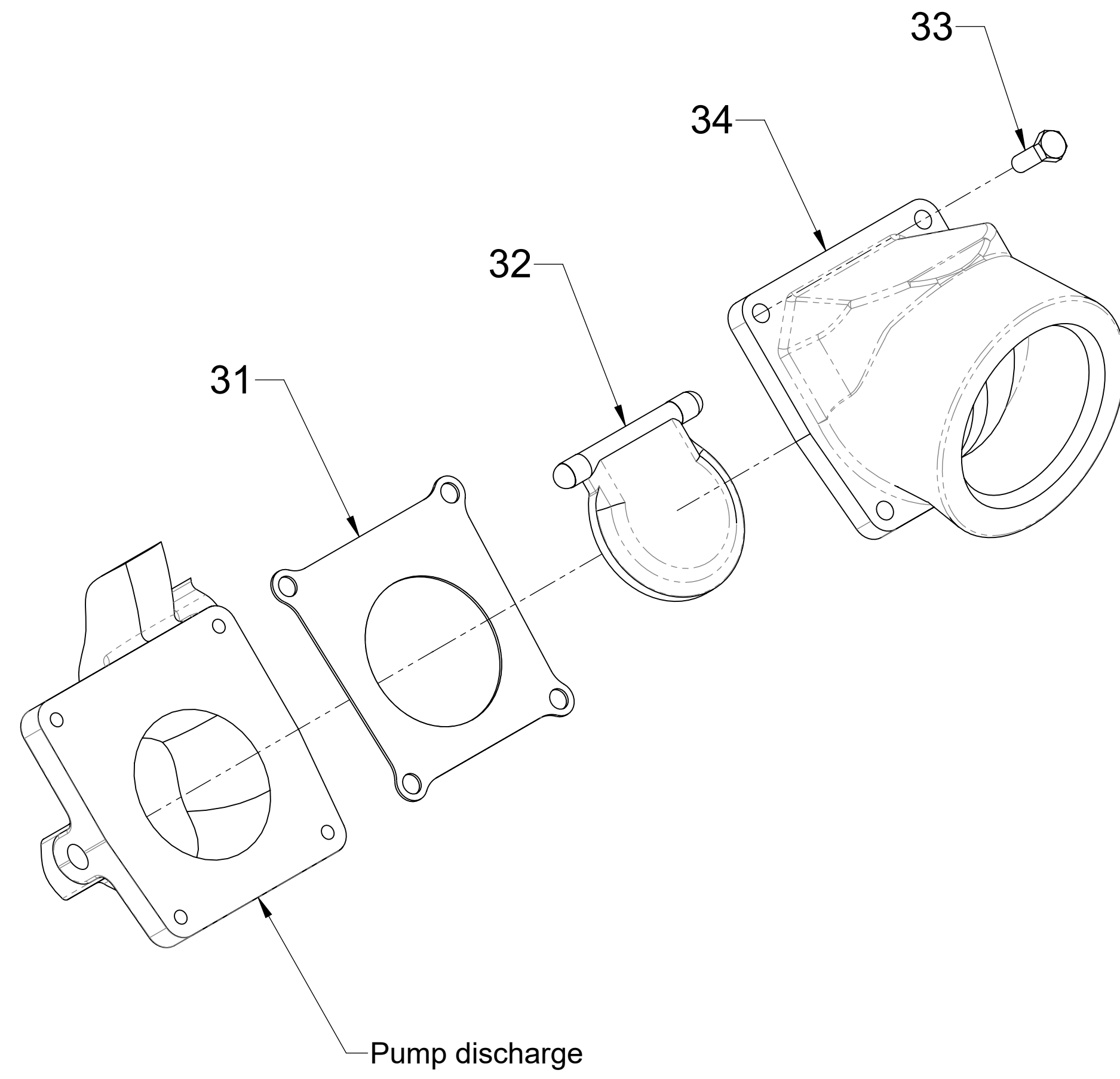
2515B with 1-1/2 NPT (F) Connection



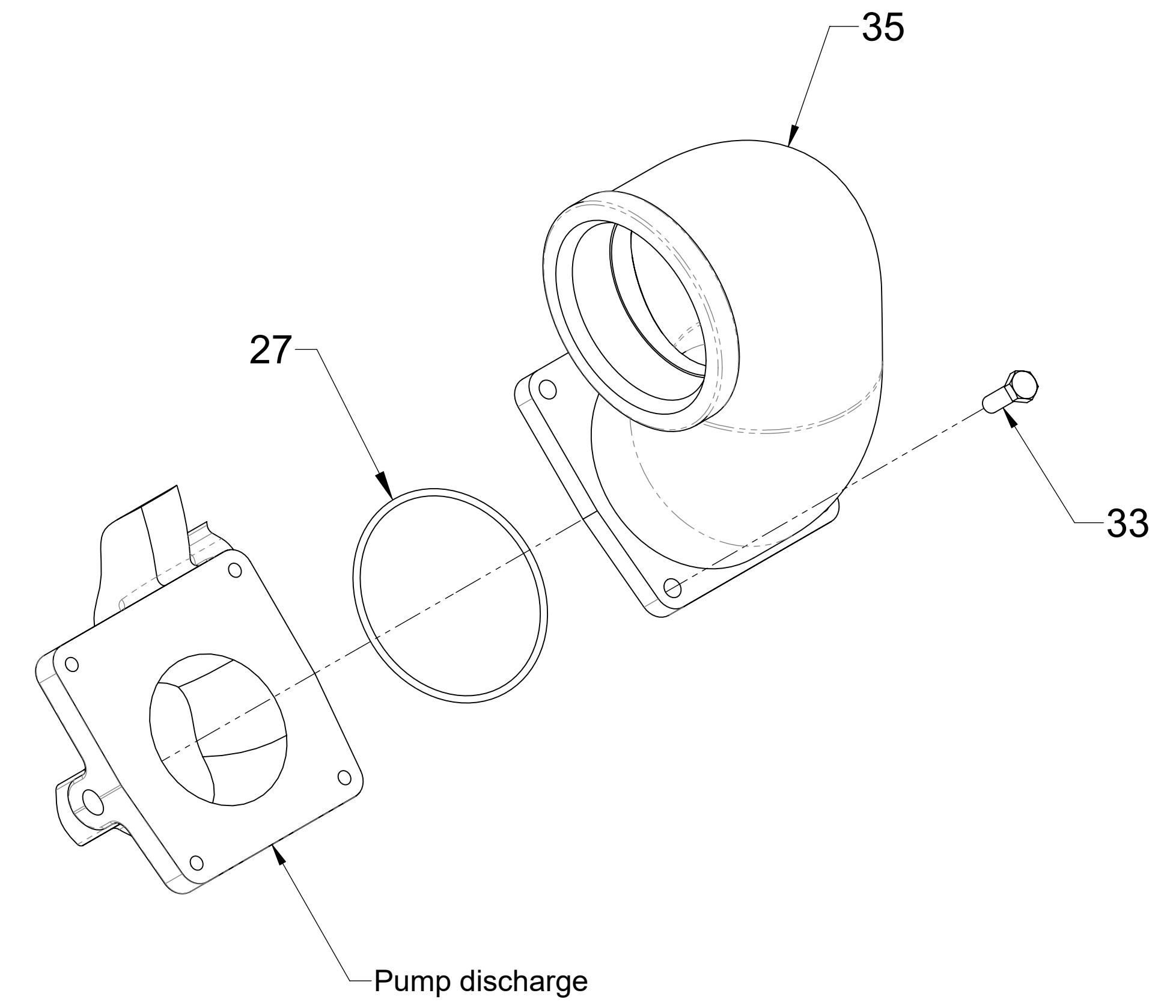
2515F with 1-1/2 NPT (F) Adapter

Models 2515B and 2515F Discharge Components

Ref No.	Description
27	O-Ring, 3-5/8 x 3-7/8 in
31	Gasket-Discharge
34	Elbow
32	Valve-Flap
33	Screw-Hex Hd, 5/16-18 x 1 in
35	Extension-Discharge Elbow

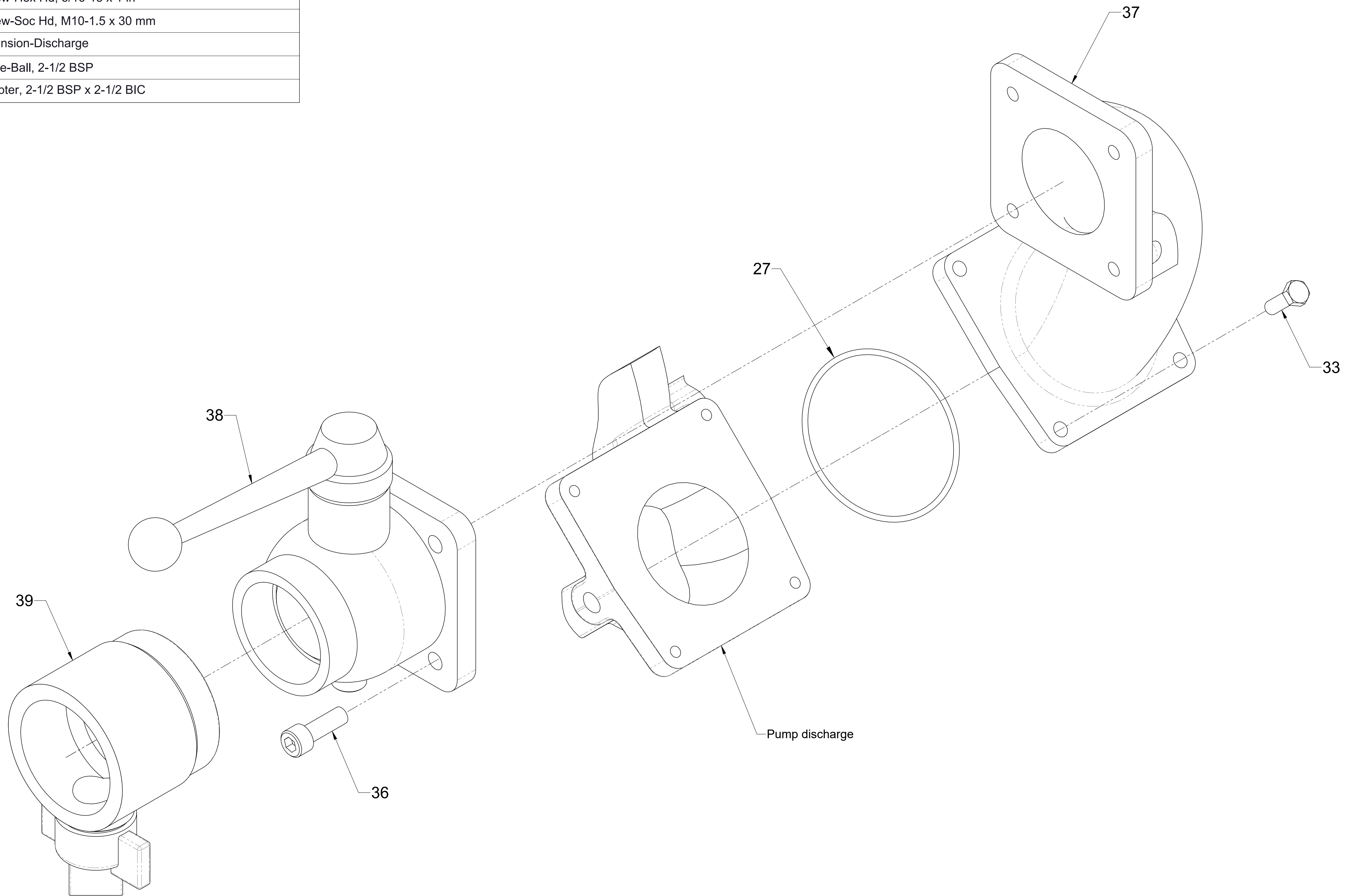


3030C with 3 NPT (F) or 3 BSPT (F) Right Facing Elbow



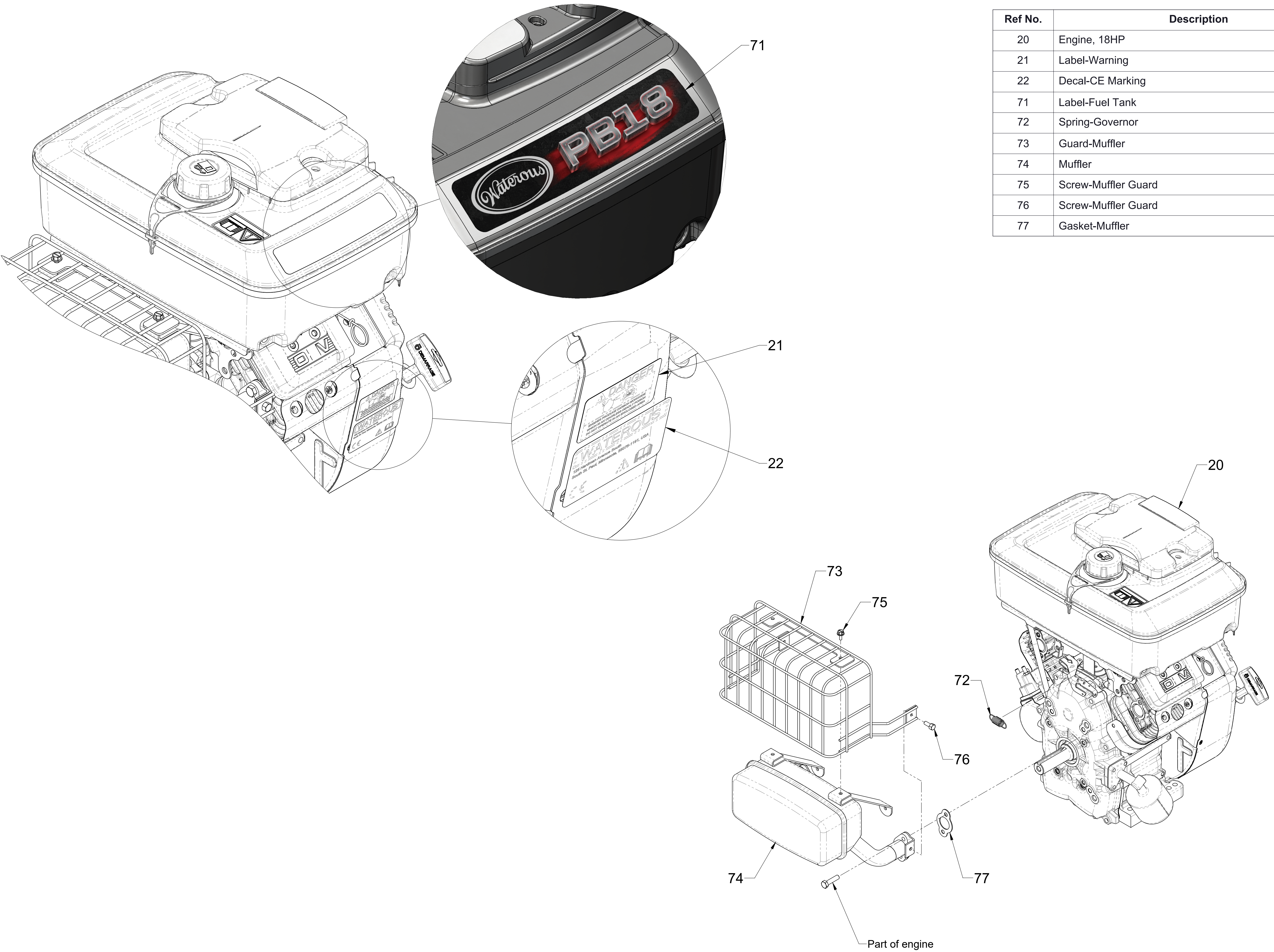
3030E with 3 NPT (F) or 3 BSPT (F) Front Facing Elbow

Ref No.	Description
27	O-Ring, 3-5/8 X 3-7/8 in
33	Screw-Hex Hd, 5/16-18 x 1 in
36	Screw-Soc Hd, M10-1.5 x 30 mm
37	Extension-Discharge
38	Valve-Ball, 2-1/2 BSP
39	Adapter, 2-1/2 BSP x 2-1/2 BIC



Model 4025B Discharge Components

Ref No.	Description
20	Engine, 18HP
21	Label-Warning
22	Decal-CE Marking
71	Label-Fuel Tank
72	Spring-Governor
73	Guard-Muffler
74	Muffler
75	Screw-Muffler Guard
76	Screw-Muffler Guard
77	Gasket-Muffler



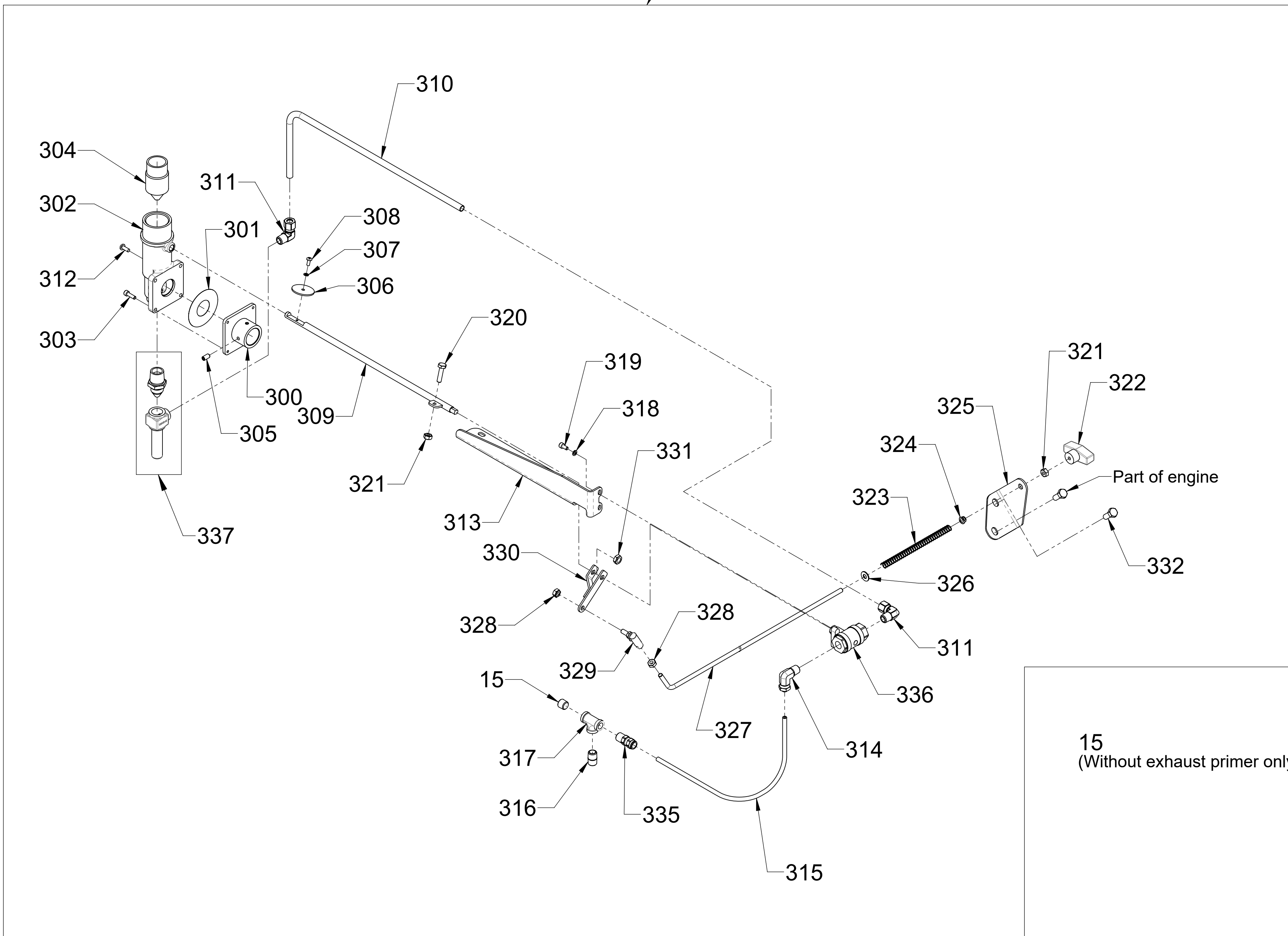
Engine and Muffler Components

Ref No.	Description
15	Plug-Pipe, Headless, 1/4 NPT
75	Screw-Muffler Guard
300	Primer-Adapter
301	Gasket-Primer
302	Body-Primer
303	Screw-Cap, Hex Soc Hd, #10-24 x 5/8
304	Arrestor-Spark
305	Screw-Set, Cup Point, Hex Soc, 1/4-20 x 1/2 in
306	Valve-Butterfly
307	Washer-Lock, Med-Spring, #8
308	Screw-Machine, Pan Hd, #8-32 x 3/8 in
309	Rod-Primer
310	Tube-Primer

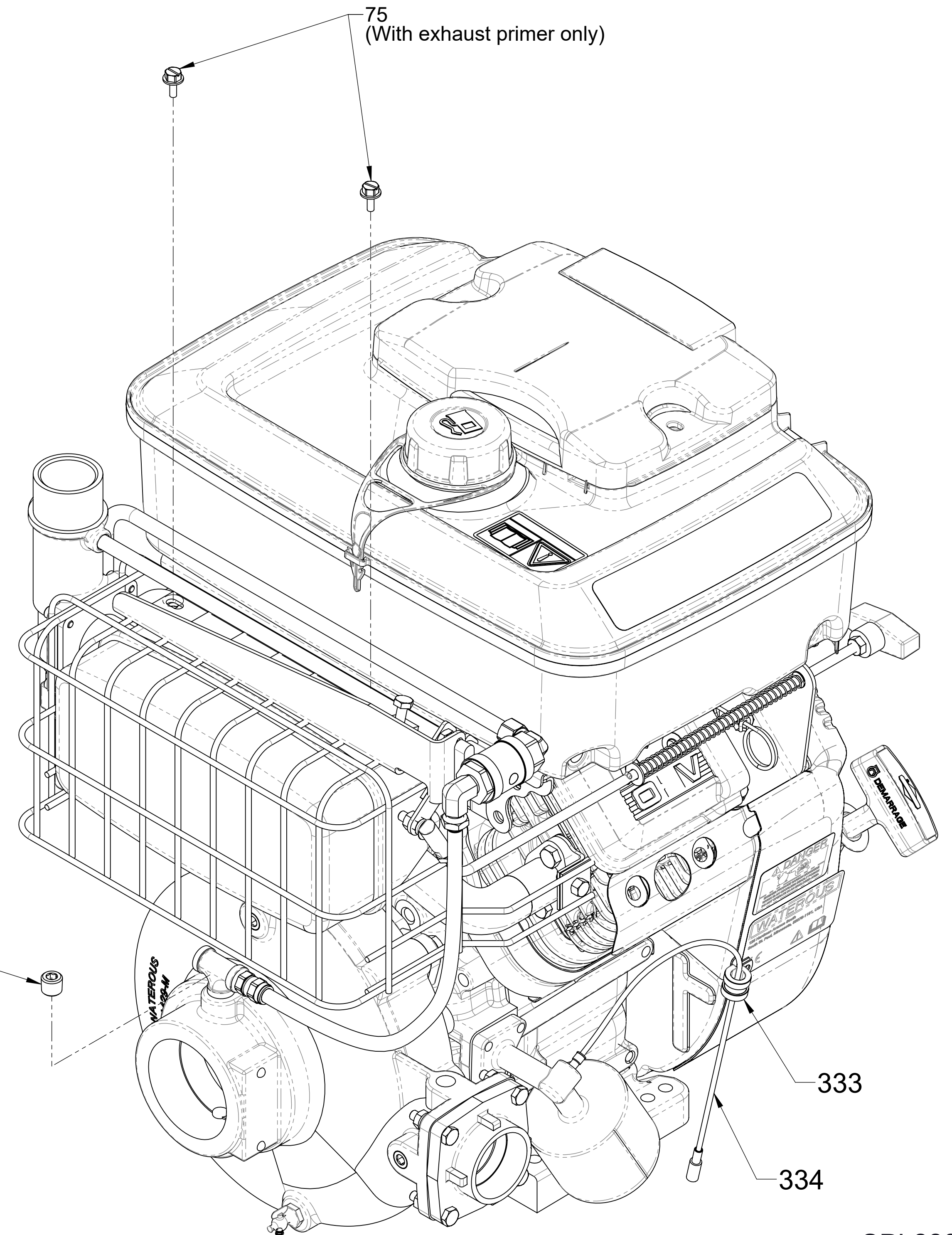
Ref No.	Description
311	Adapter-Elbow, Compression, 3/8 Tube to 1/4 MNPT
312	Screw-Machine, Pan Hd, #10-24 x 1/2 in
313	Base-Primer
314	Elbow-Male, 3/8 in Tube
315	Tubing-Poly, 3/8 O.D.
316	Nipple-Pipe, 1/4 NPT x 7/8 in
317	Tee-Standard, Pipe, 1/4 NPT
318	Washer-Lock, Med-Spring, #10
319	Screw-Cap, Hex Soc Hd, #10-24 x 3/8 in
320	Screw-Hex Hd, 1/4-20 x 1 in
321	Nut-Hex, 1/4-20
322	Knob-Bar

Ref No.	Description
323	Spring-Compression
324	Bushing-Nylon Split
325	Bracket-Priming Rod
326	Washer-Plain, 1/4 in
327	Rod-Linkage
328	Nut-Hex, 1/4-28
329	End-Rod
330	Lever-Primer
331	Nut-Hex, Jam, 5/16-18
332	Screw-Hex Hd, M8-1.25 x 20 mm
333	Clamp-Wire
334	Wire-Oil Light
335	Connector-Male, 3/8 in Tube
336	Valve-Ball, 1/4 NPT
337	Exhaust Primer Subassembly

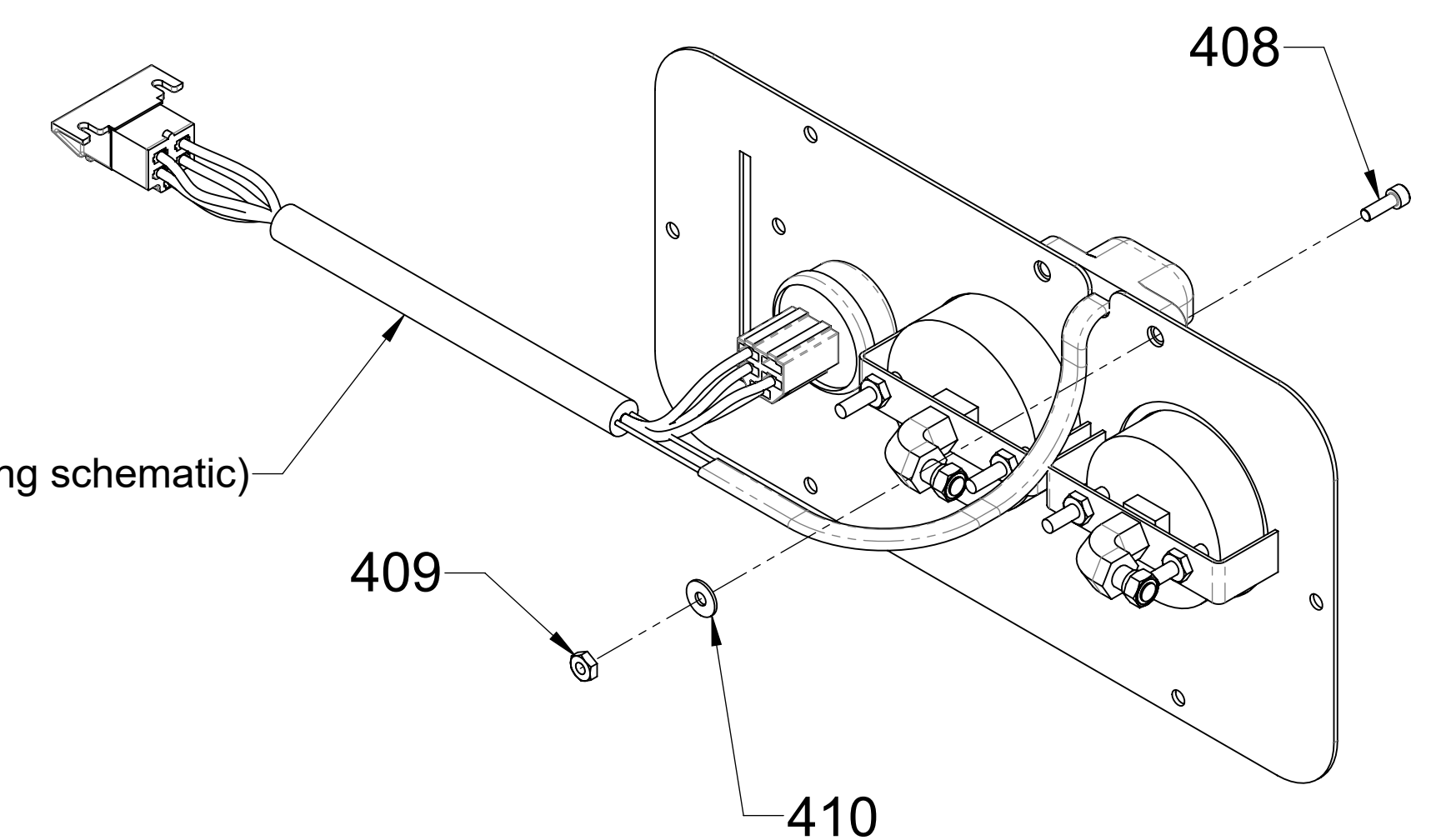
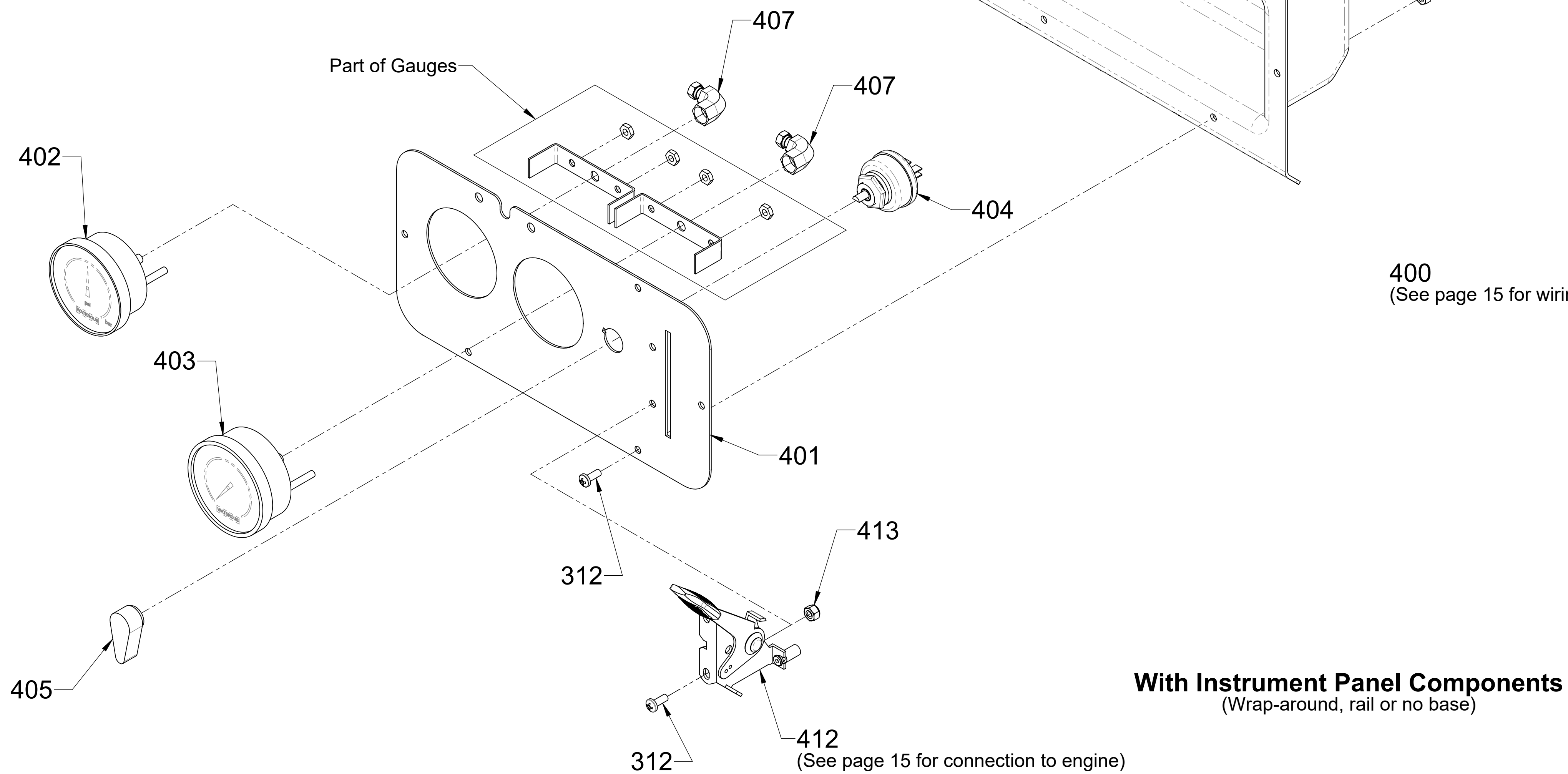
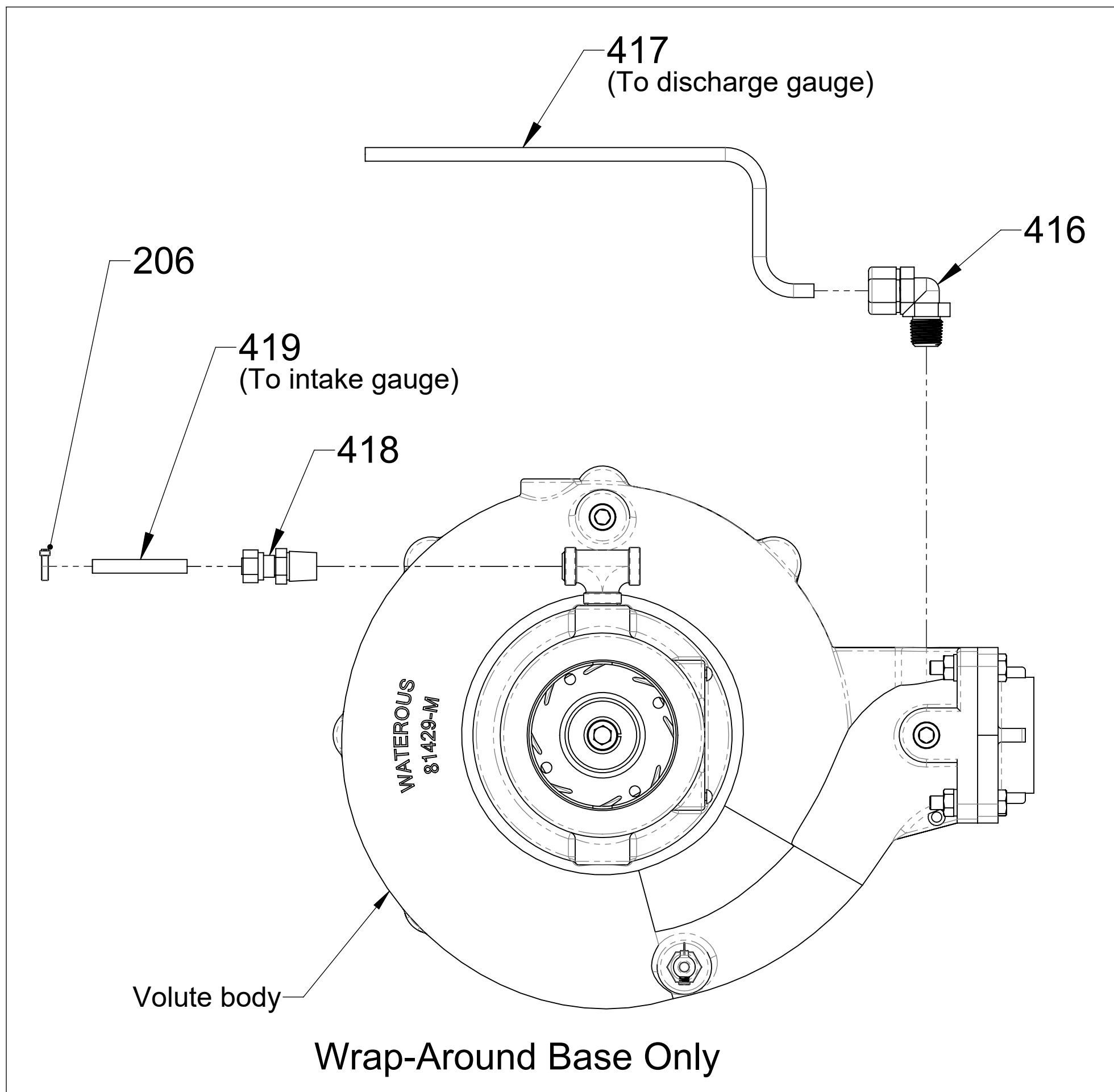
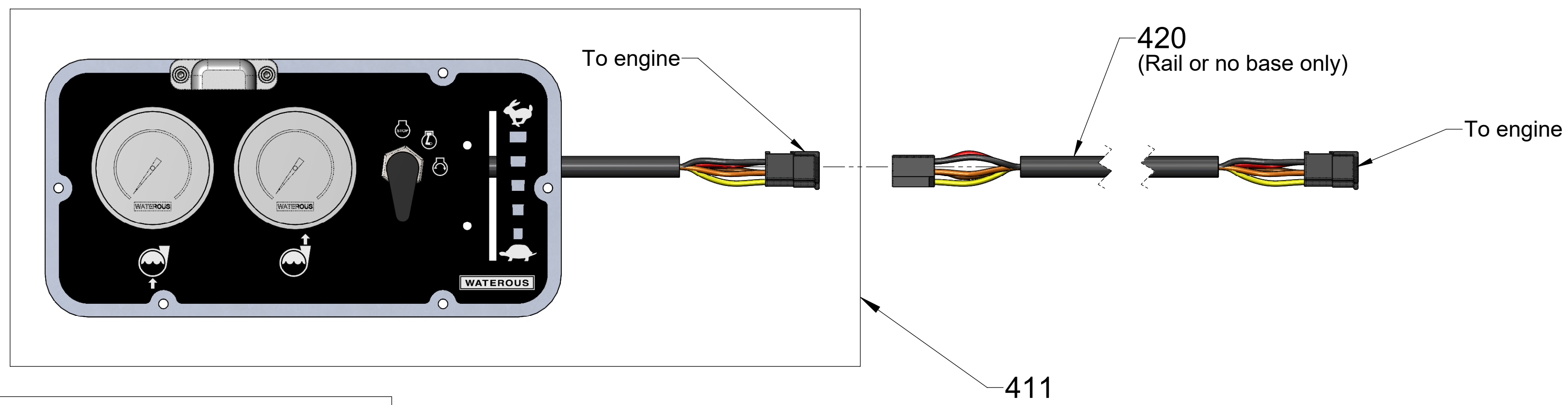
With exhaust primer components
(See assembled view for mounting details)



With or Without Exhaust Primer Components



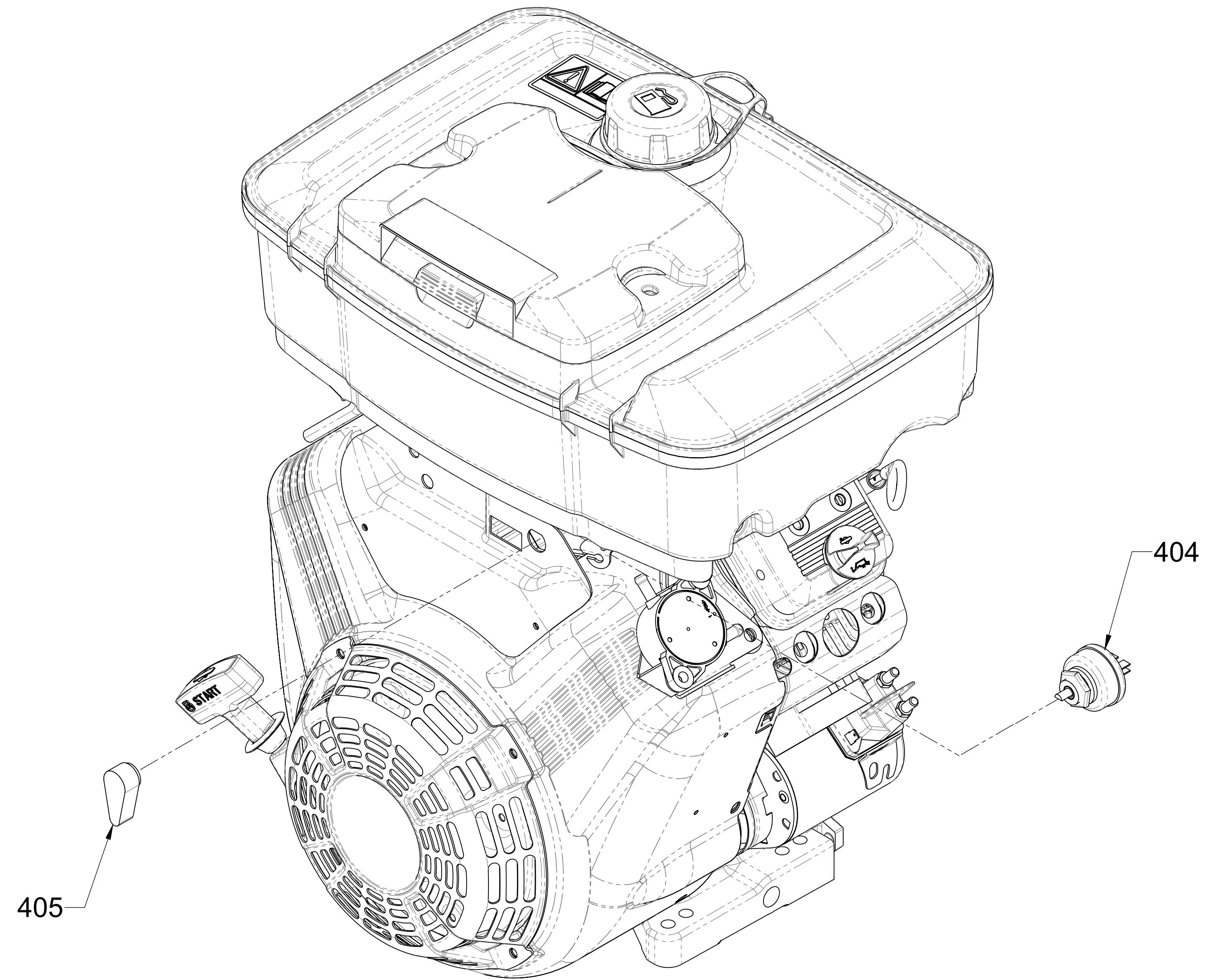
Assembled View



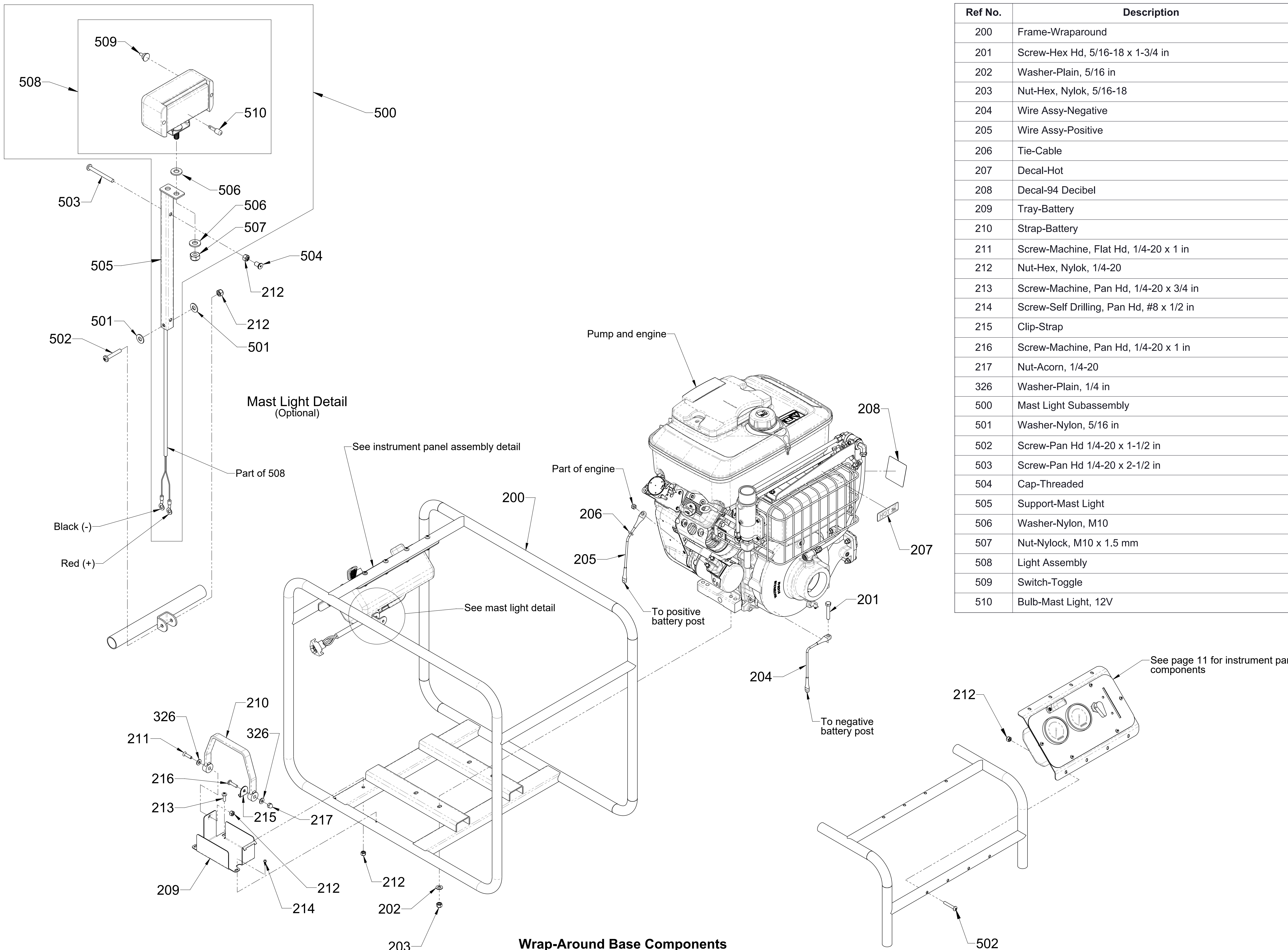
Wiring Harness Assembly View

Ref No.	Description
206	Tie-Cable
312	Screw-Machine, Pan Hd, #10-24 x 1/2 in
400	Harness-Wiring
401	Plate-Panel
402	Gauge-Intake
403	Gauge-Discharge
404	Switch-Ignition
405	Knob
407	Elbow-Female, 90°, 1/4 NPT x 1/4 O.D.
408	Screw-Cap, Hex Soc Hd, #8-32 x 1/2 in
409	Nut-Hex, Machine, #8-32
410	Washer-Flat, Machine Screw, #8
411	Instrument Panel Subassembly
412	Control-Throttle, Bracket
413	Nut-Hex, Nylok, #10-24
415	Insert-Instrument Panel
416	Elbow-Male, 1/4 NPT x 1/4 Tube
417	Tubing-Nylon, 1/4 O.D.
418	Connector-Male, 1/4 NPT x 1/4 Tube
419	Tubing-Nylon, 1/4 O.D.
420	Extension-Harness

Ref No.	Description
404	Switch-Ignition
405	Knob-Switch



Without Instrument Panel Components
 (Wrap-around, rail or no base)

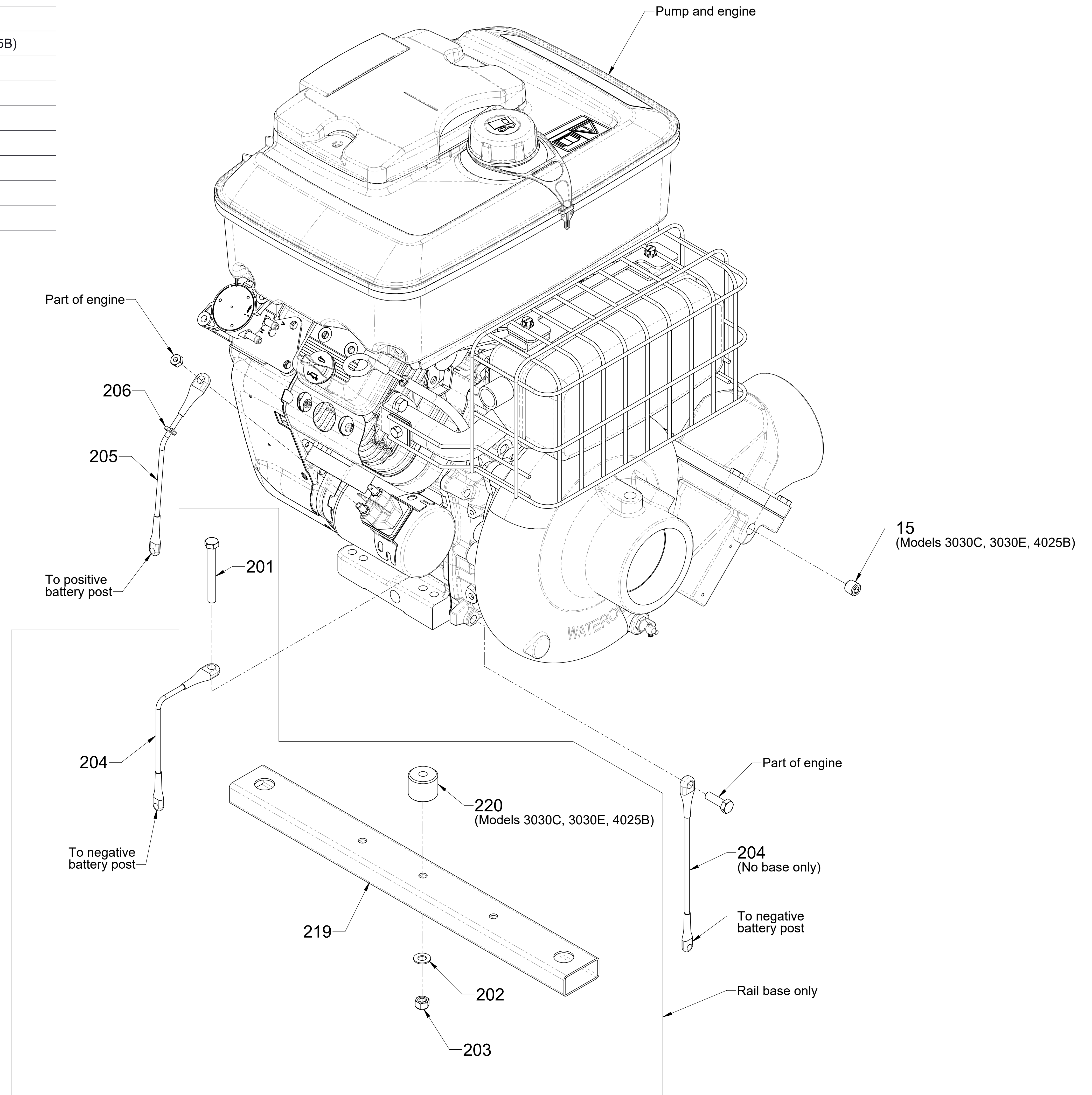


Ref No.	Description
200	Frame-Wraparound
201	Screw-Hex Hd, 5/16-18 x 1-3/4 in
202	Washer-Plain, 5/16 in
203	Nut-Hex, Nylok, 5/16-18
204	Wire Assy-Negative
205	Wire Assy-Positive
206	Tie-Cable
207	Decal-Hot
208	Decal-94 Decibel
209	Tray-Battery
210	Strap-Battery
211	Screw-Machine, Flat Hd, 1/4-20 x 1 in
212	Nut-Hex, Nylok, 1/4-20
213	Screw-Machine, Pan Hd, 1/4-20 x 3/4 in
214	Screw-Self Drilling, Pan Hd, #8 x 1/2 in
215	Clip-Strap
216	Screw-Machine, Pan Hd, 1/4-20 x 1 in
217	Nut-Acorn, 1/4-20
326	Washer-Plain, 1/4 in
500	Mast Light Subassembly
501	Washer-Nylon, 5/16 in
502	Screw-Pan Hd 1/4-20 x 1-1/2 in
503	Screw-Pan Hd 1/4-20 x 2-1/2 in
504	Cap-Threaded
505	Support-Mast Light
506	Washer-Nylon, M10
507	Nut-Nylock, M10 x 1.5 mm
508	Light Assembly
509	Switch-Toggle
510	Bulb-Mast Light, 12V

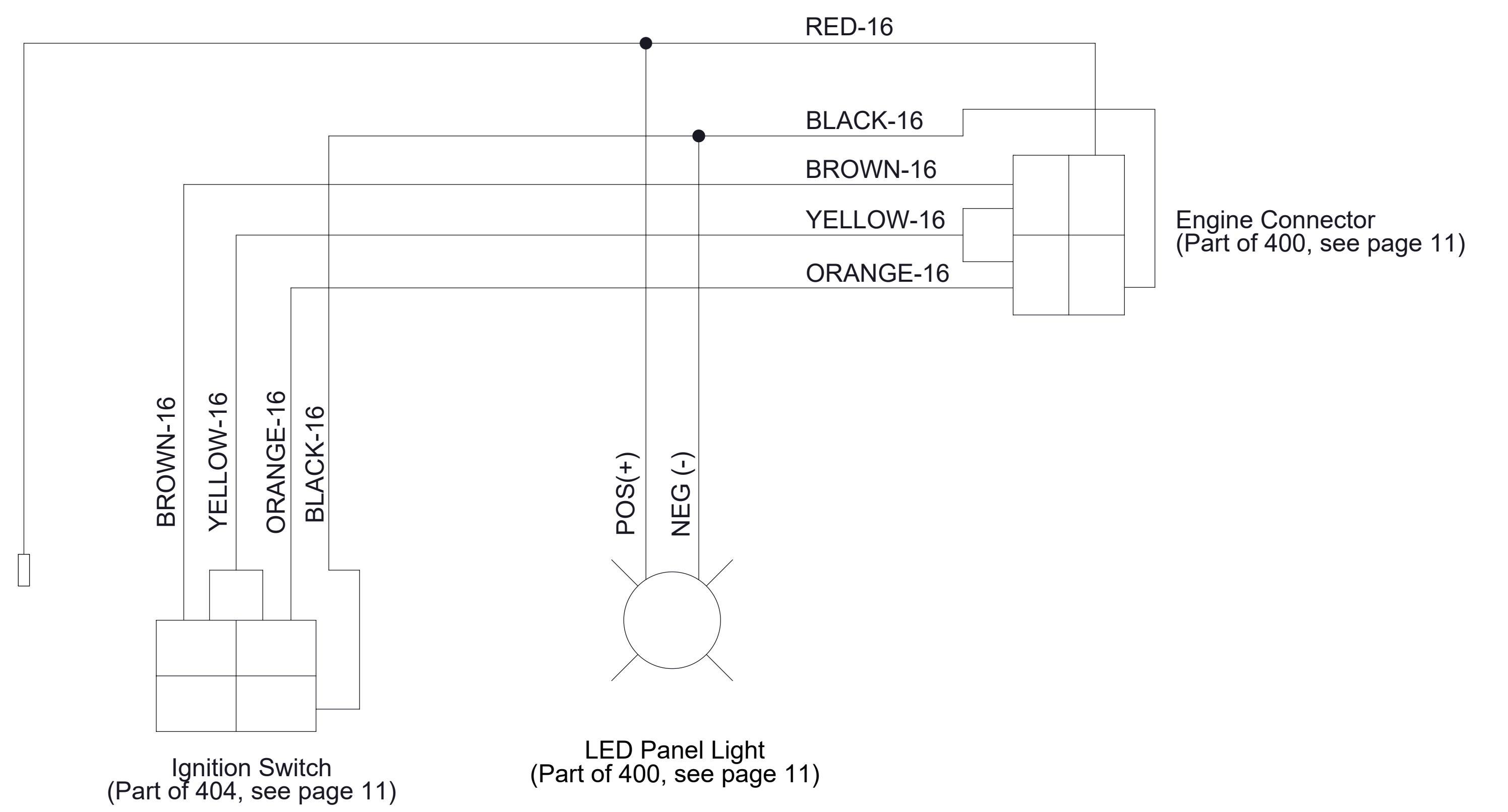
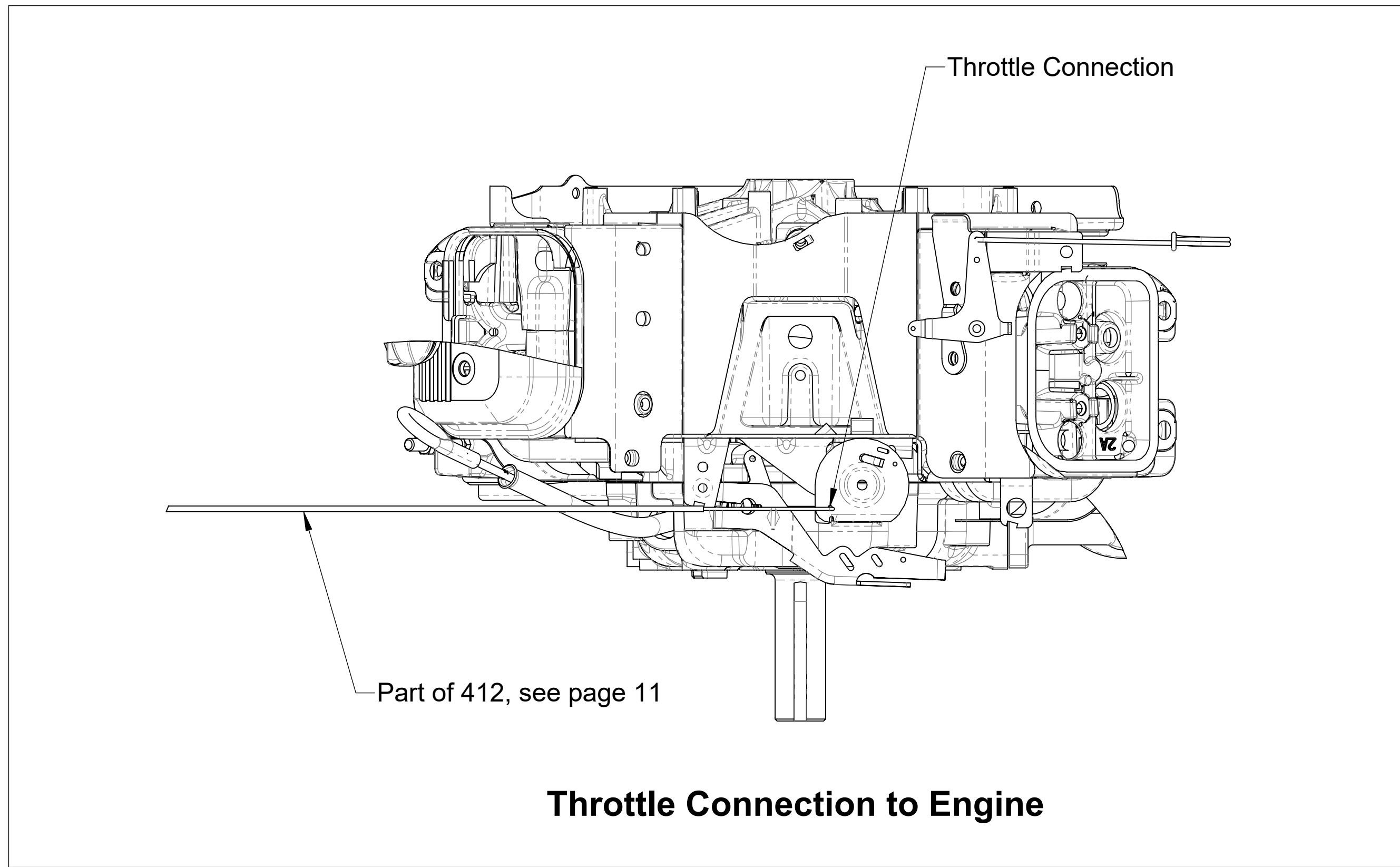
Wrap-Around Base Components
(All models except 3030E)

Instrument Panel Assembly Detail

Ref No.	Description
15	Plug-Pipe, Headless, 1/4 NPT
201	Screw-Hex Hd, 5/16-18 x 1-3/4 in (Models 2515B, 2515F)
201	Screw-Hex Hd, 5/16-18 x 2-3/4 in (Models 3030C, 3030E, 4025B)
202	Washer-Plain, 5/16 in
203	Nut-Hex, Nylok, 5/16-18
204	Wire Assy-Negative
205	Wire Assy-Positive
206	Tie-Cable
219	Base-Rail
220	Spacer-Mounting



Rail Base or No Base Components
(All models unless noted otherwise)



Wiring Schematic