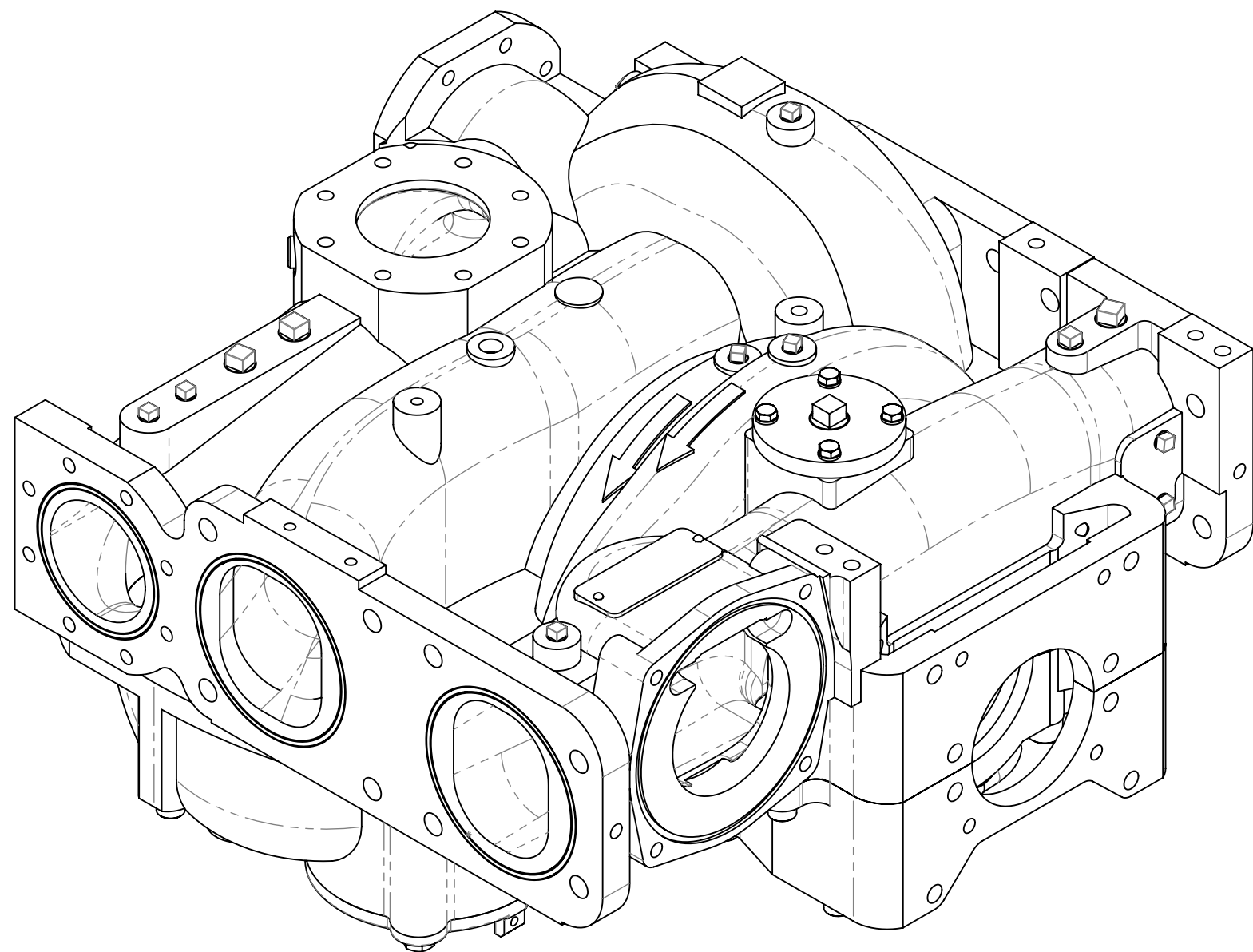


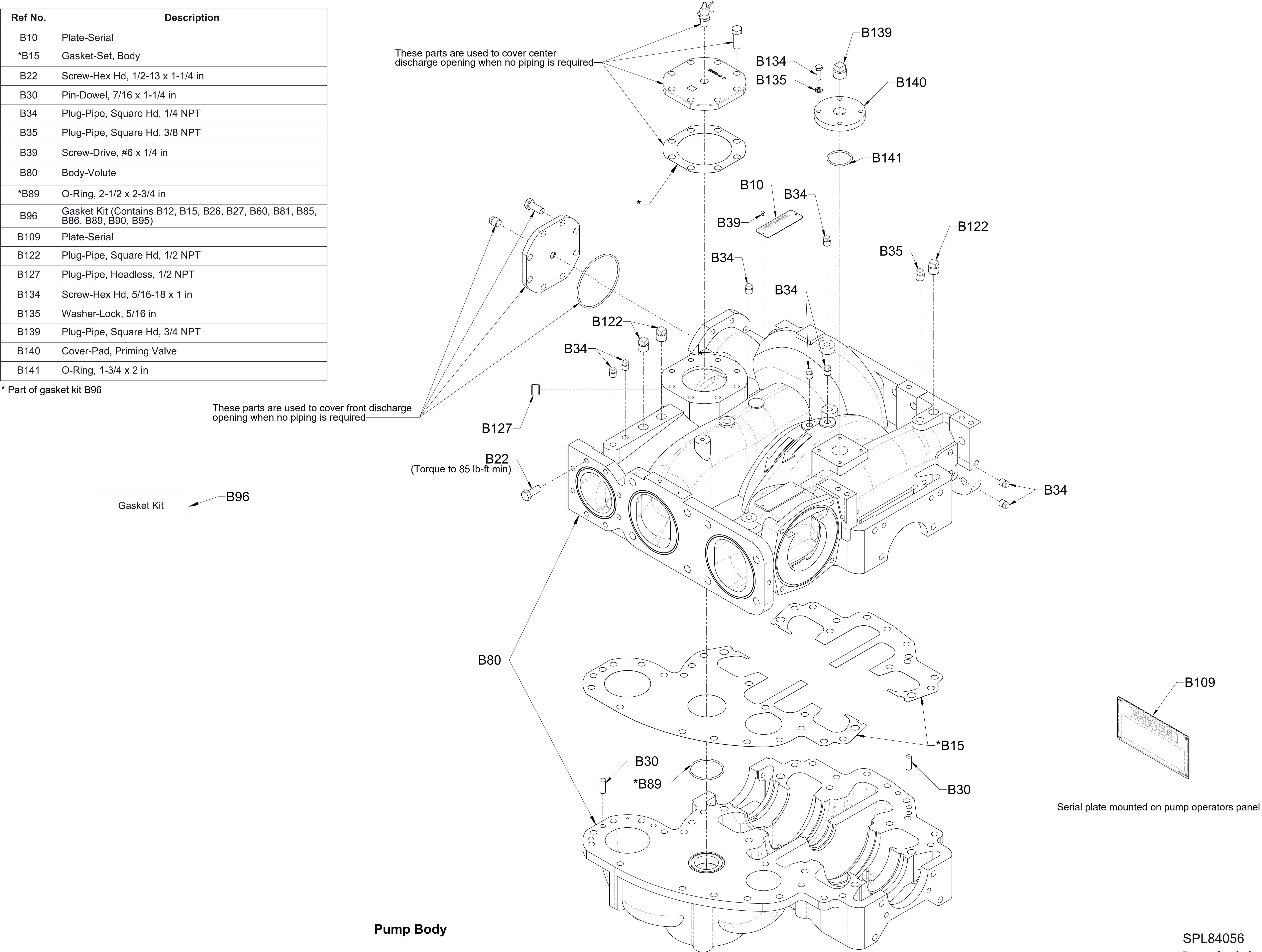
Waterous CM'04 Special Application  
Pipeline Cleaning (Pigging) Pumps Service Parts List  
(Iron CM'04 Body Style)

Pump Model	Component			See Page
CM, CMU	Pump Body Halves	View of Body (Top Side)		2
		View of Cover (Underside)		3
		Seal Cooling Line		4
	Intake Adapters	Left Side	Large	5
			Large Rear	
		Right Side	Large	6
			Large Rear	
	Tank to Pump Connection			7
	Transfer Valve			8



Ref No.	Description
B10	Plate-Serial
*B15	Gasket-Set, Body
B22	Screw-Hex Hd, 1/2-13 x 1-1/4 in
B30	Pin-Dowel, 7/16 x 1-1/4 in
B34	Plug-Pipe, Square Hd, 1/4 NPT
B35	Plug-Pipe, Square Hd, 3/8 NPT
B39	Screw-Drive, #6 x 1/4 in
B80	Body-Volute
*B89	O-Ring, 2-1/2 x 2-3/4 in
B96	Gasket Kit (Contains B12, B15, B26, B27, B60, B81, B85, B86, B89, B90, B95)
B109	Plate-Serial
B122	Plug-Pipe, Square Hd, 1/2 NPT
B127	Plug-Pipe, Headless, 1/2 NPT
B134	Screw-Hex Hd, 5/16-18 x 1 in
B135	Washer-Lock, 5/16 in
B139	Plug-Pipe, Square Hd, 3/4 NPT
B140	Cover-Pad, Priming Valve
B141	O-Ring, 1-3/4 x 2 in

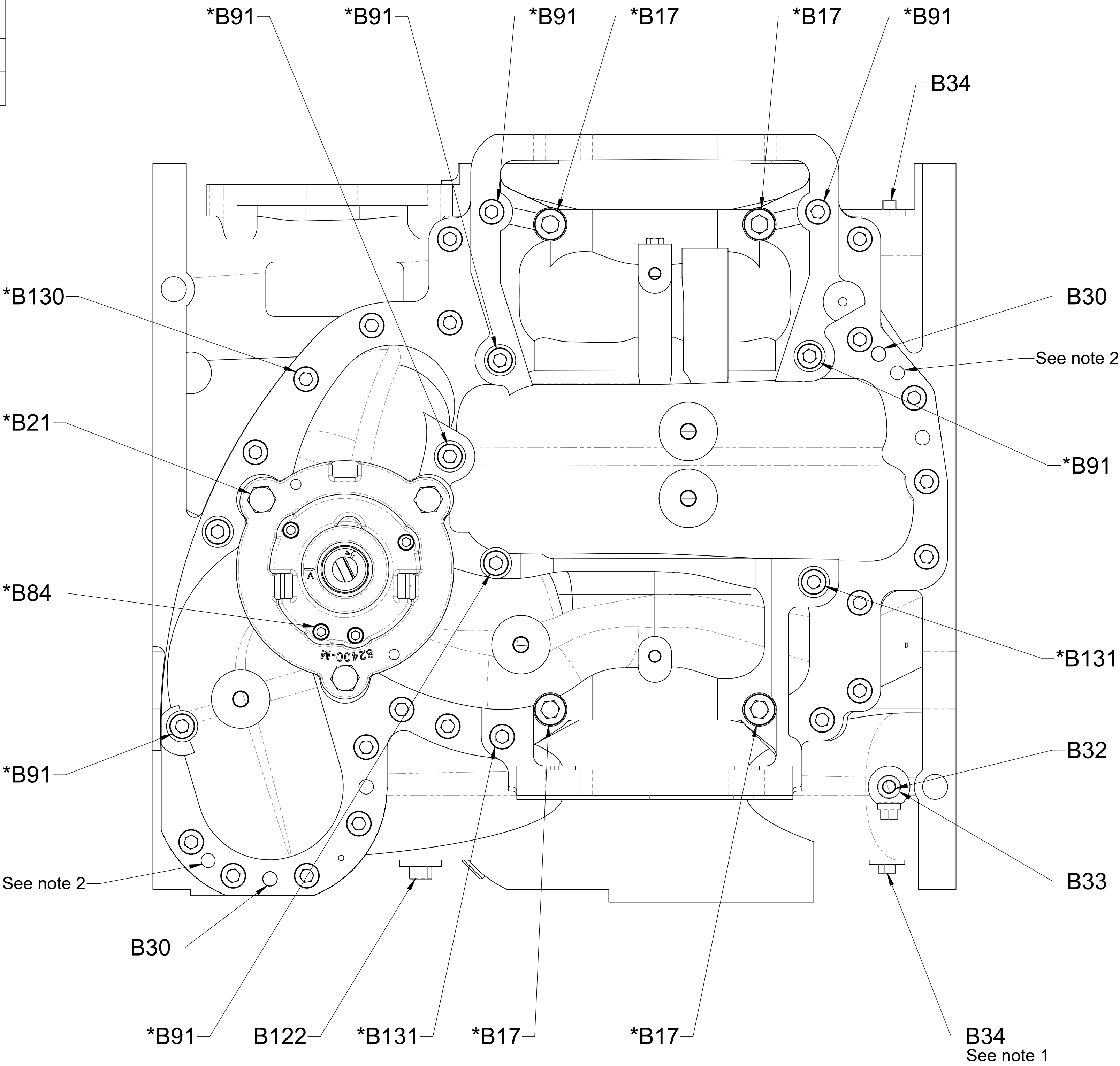
\* Part of gasket kit B96





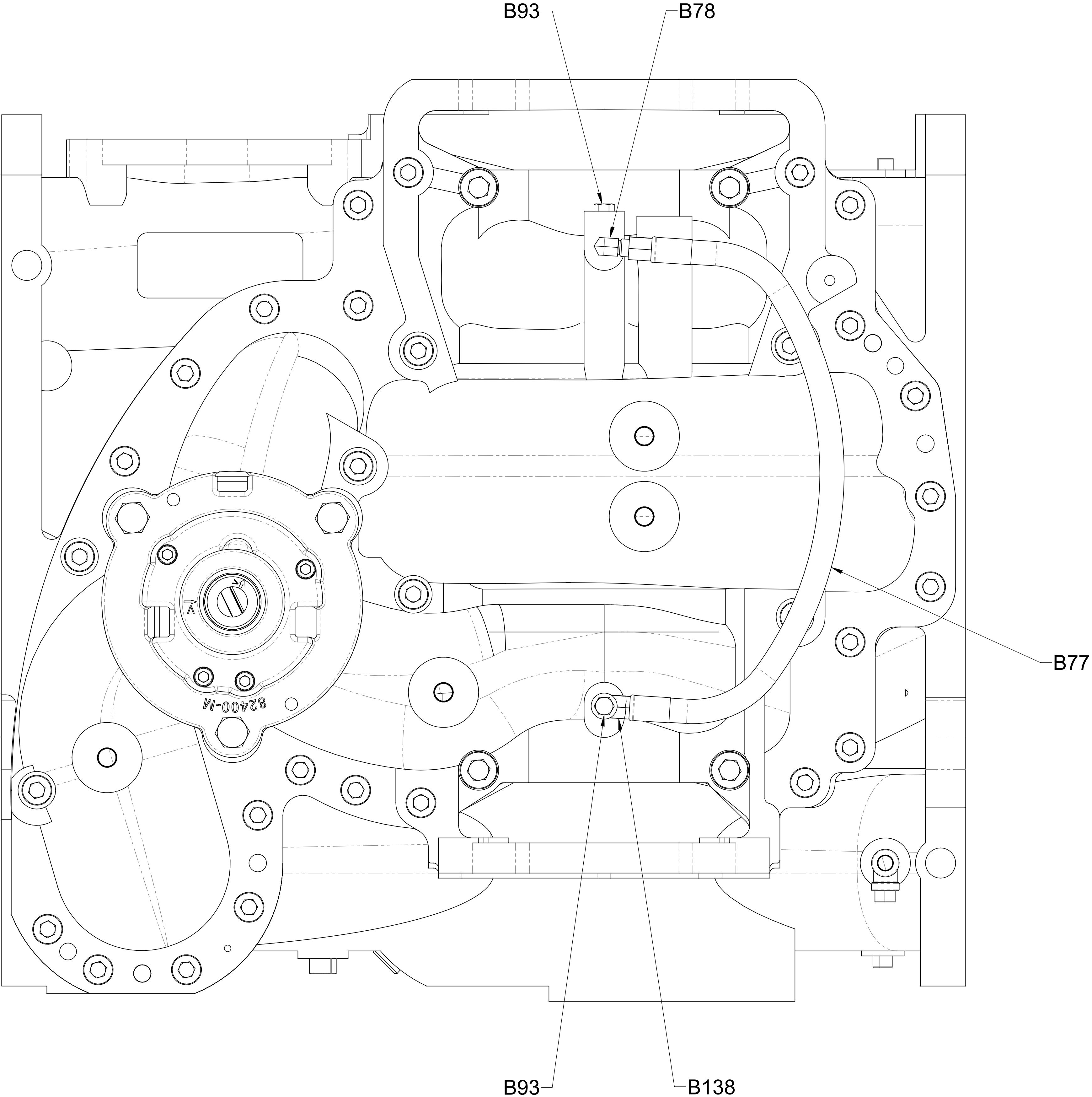
Ref No.	Description
*B17	Screw-Cap, Hex Soc Hd, 5/8-11 x 3-1/4 in
*B21	Screw-Hex Hd, 1/2-13 x 1 in
B30	Pin-Dowel, 7/16 x 1-1/4 in
B32	Nipple-Pipe, 1/4 NPT x 1-1/2 in
B33	Tee-Standard, Pipe, 1/4 NPT
B34	Plug-Pipe, Square Hd, 1/4 NPT
*B84	Screw-Cap, Hex Soc Hd, 5/16-18 x 3/4 in
*B91	Screw-Cap, Hex Soc Hd, 1/2-13 x 4-3/4 in
B122	Plug-Pipe, Square Hd, 1/2 NPT
*B130	Screw-Cap, Hex Soc Hd, 1/2-13 x 1-1/2 in
*B131	Screw-Cap, Hex Soc Hd, 1/2-13 x 3-1/2 in

\* Torque to 105 lb-ft minimum



Notes:  
 1. Waterous furnishes pump with B34 pipe plugs installed in these holes, but the apparatus builder may have removed them and installed piping to the drain valve.  
 2. These are 1/2-13 UNC tapped holes to accommodate the use of jacking screws during disassembly.

Ref No.	Description
B77	Hose Assembly, 1/4 x 18-1/2 in
B78	Elbow-Male, 1/8 NPT x 1/4 Flare
B93	Plug-Pipe, Hex Hd, 1/8 NPT
B138	Tee, 1/8 MNPT x 1/8 FNPT x 1/4 in Tube

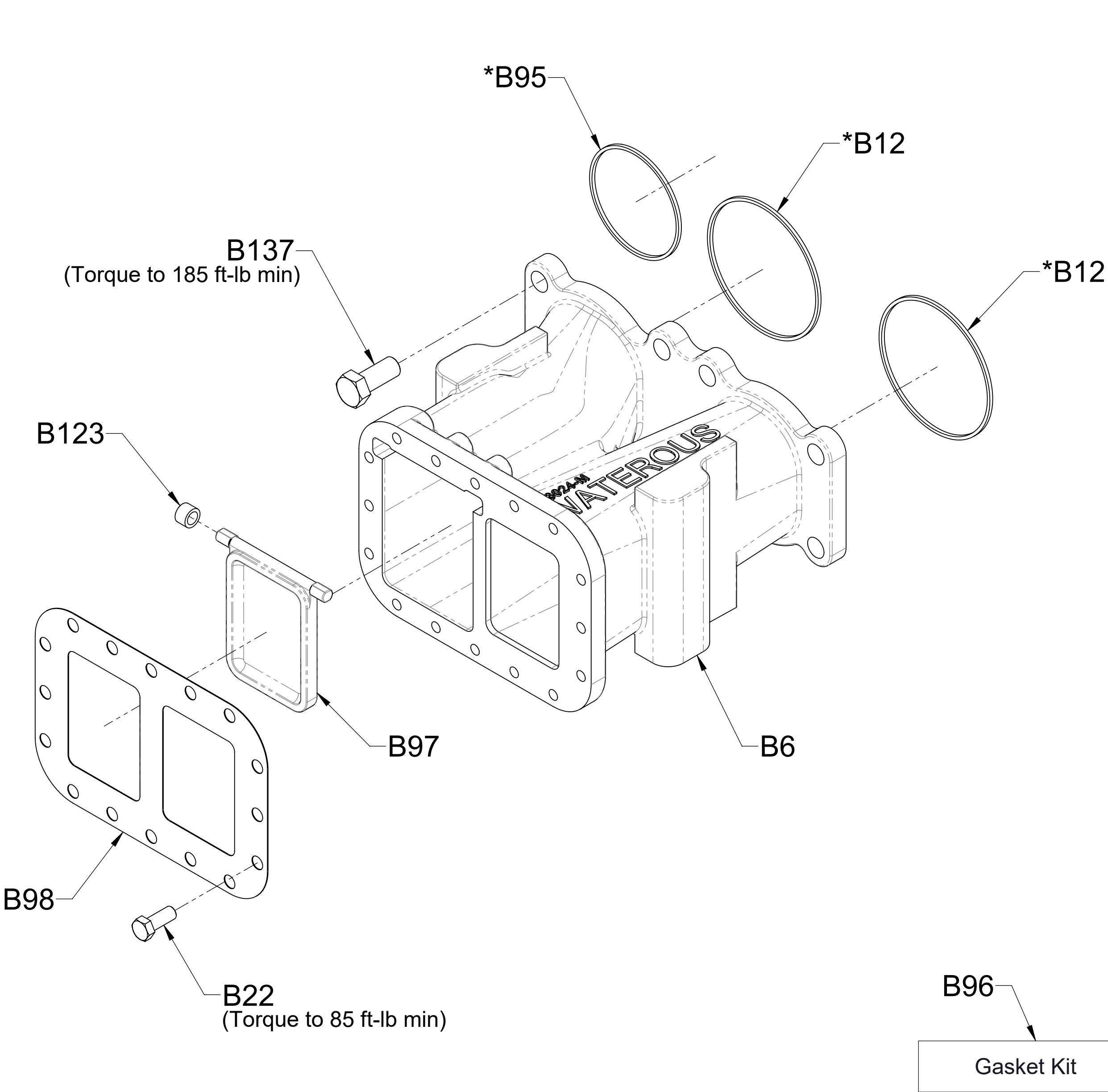


**Seal Cooling Line**  
CM/CMU used with all models of rotary style transfer valve actuator

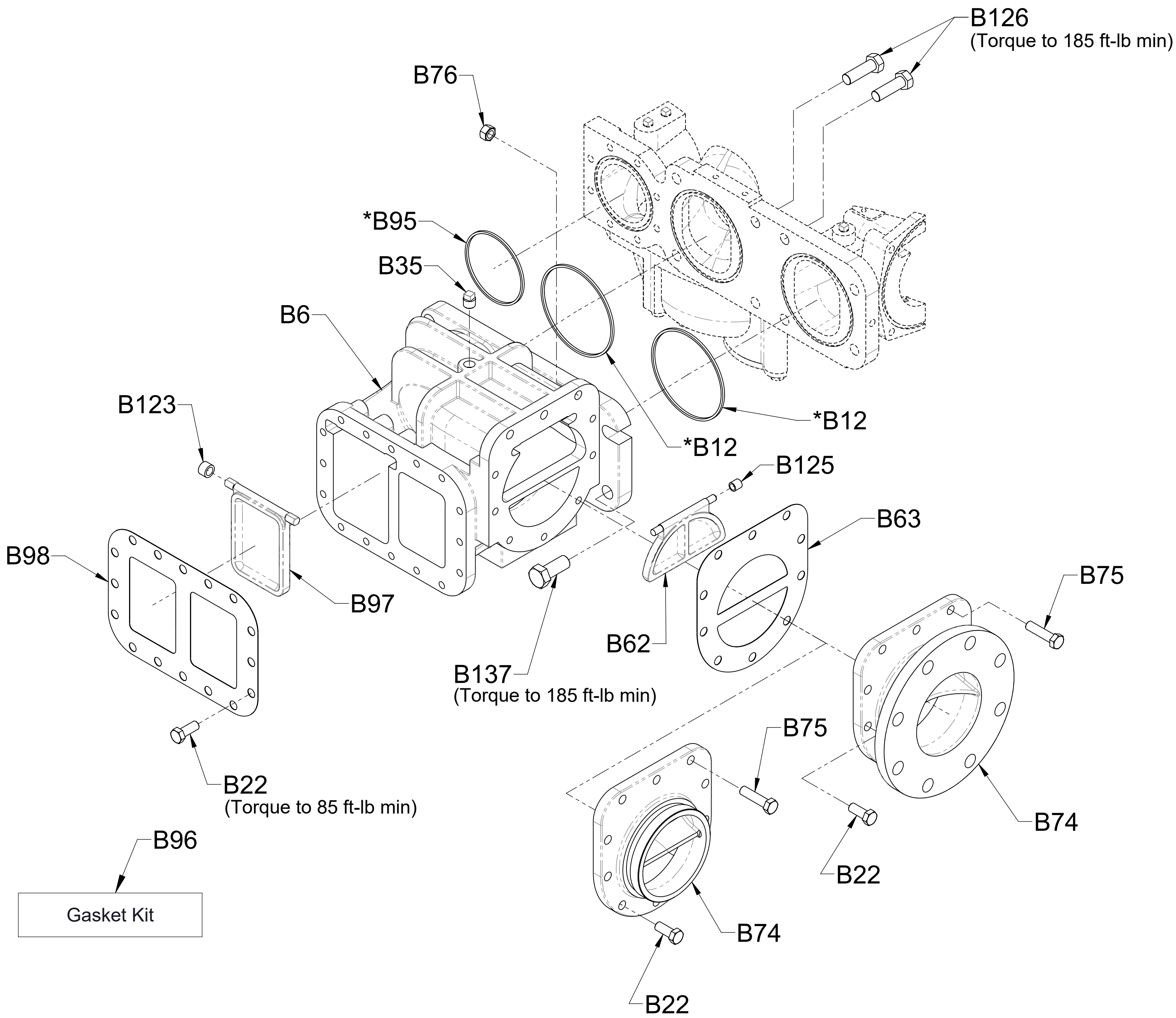


Ref No.	Description
B6	Adapter-Intake, Left Hand
*B12	Gasket, Suction Flange
B22	Screw-Hex Hd, 1/2-13 x 1-1/4 in
B35	Plug-Pipe, Square Hd, 3/8 NPT
B62	Valve-Check
B63	Gasket-Intake Fitting
B74	Rear Intake Fitting
B75	Screw-Hex Hd, 1/2-20 x 2 in
B76	Nut-Hex, 1/2-20
*B95	Gasket - Flange, Discharge
B96	Gasket Kit (Contains B12, B15, B26, B27, B60, B81, B85, B86, B89, B90, B95)
B97	Valve-Flap, Large
B98	Gasket-Fitting, Intake, Large
B123	Bearing-Plain
B125	Bearing-Plain
B126	Screw-Hex Hd, 5/8-11 x 2 in
B137	Screw-Hex Hd, 3/4-10 x 1-3/4 in

\* Part of gasket kit B96



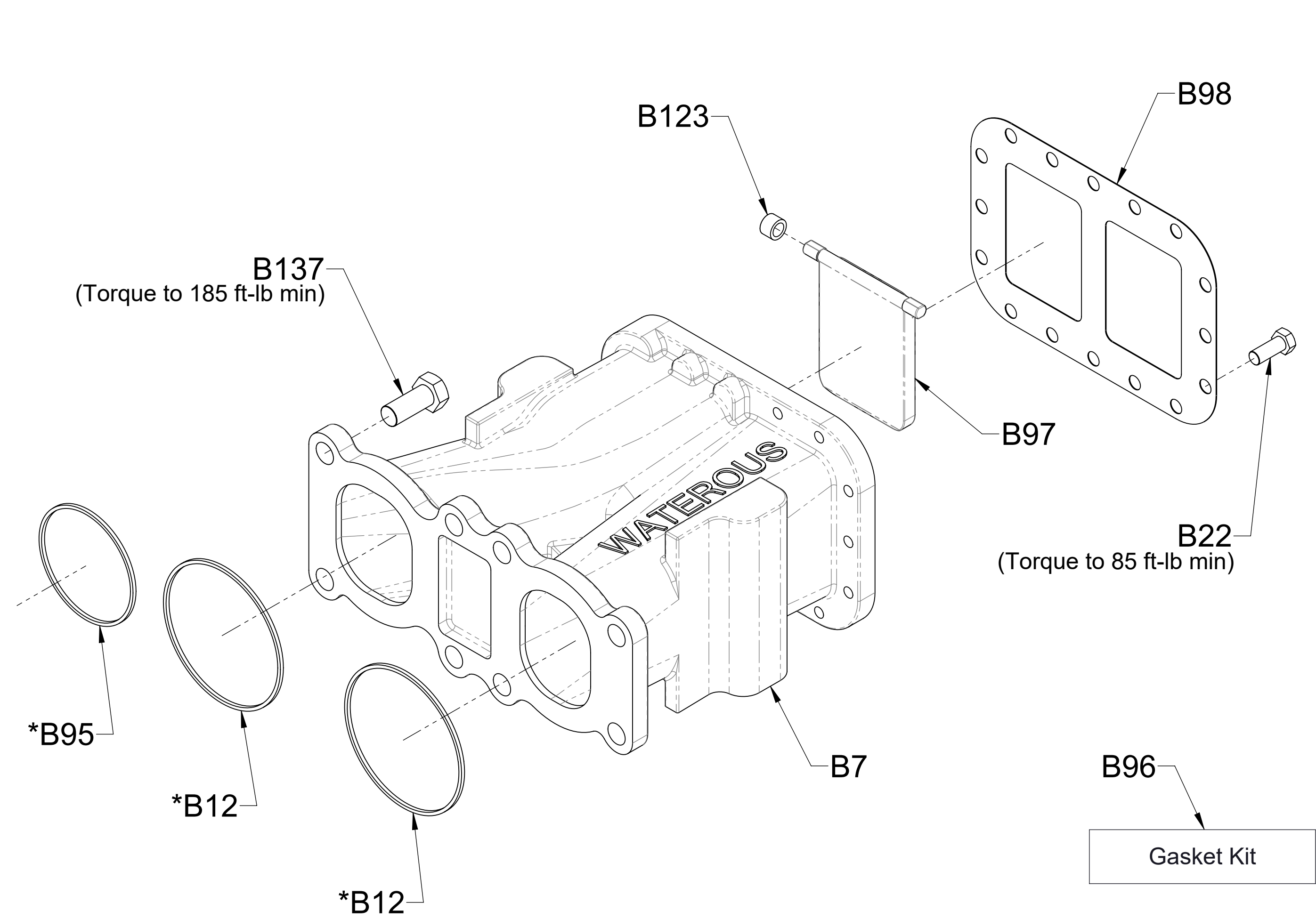
Left Side Universal Intake Adapter



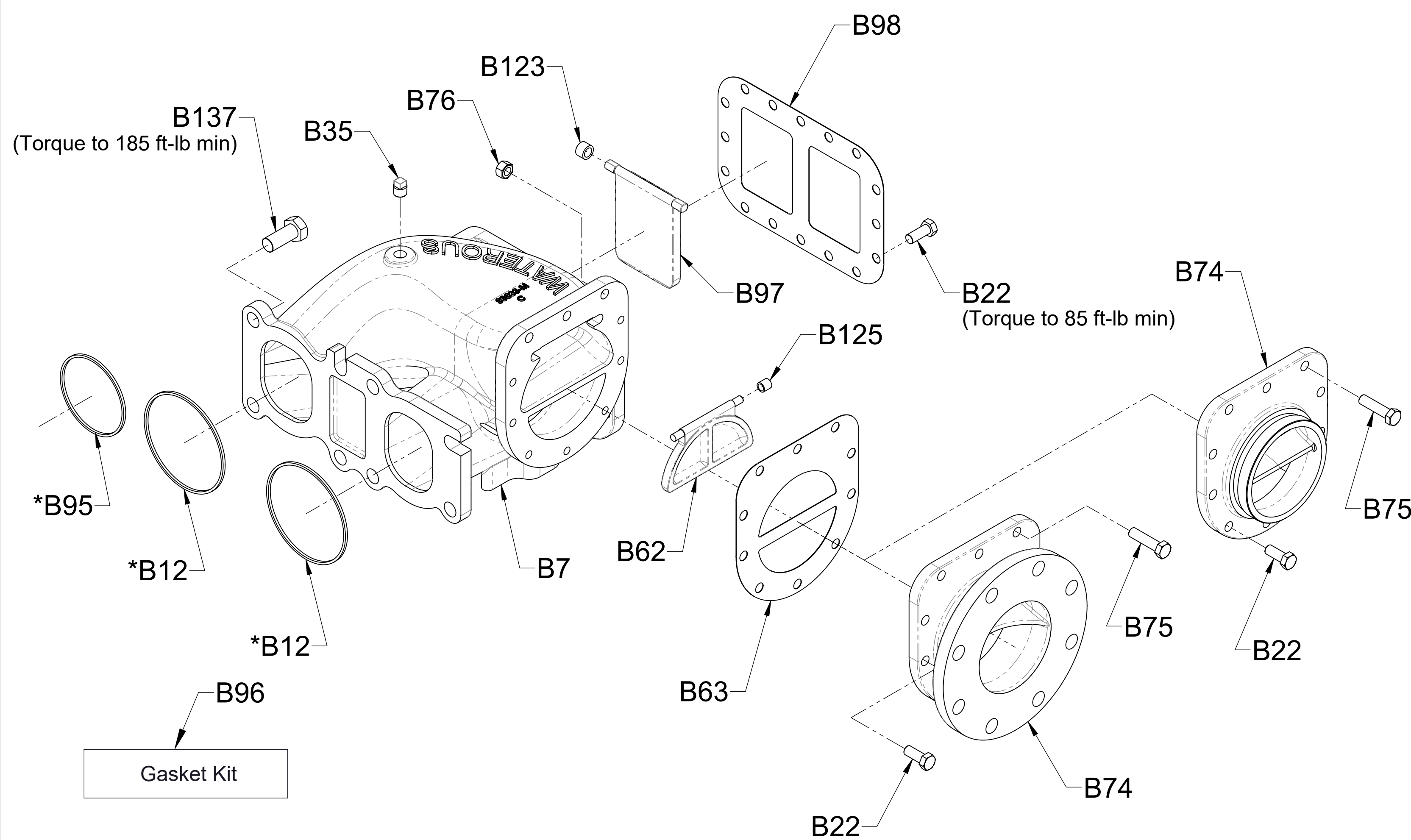
Left Side Large Rear Intake Adapter

Ref No.	Description
B7	Adapter-Intake, Right Hand
*B12	Gasket, Suction Flange
B22	Screw-Hex Hd, 1/2-13 x 1-1/4 in
B35	Plug-Pipe, Square Hd, 3/8 NPT
B62	Valve-Check
B63	Gasket-Intake Fitting
B74	Rear Intake Fitting
B75	Screw-Hex Hd, 1/2-20 x 2 in
B76	Nut-Hex, 1/2-20
*B95	Gasket - Flange, Discharge
B96	Gasket Kit (Contains B12, B15, B26, B27, B60, B81, B85, B86, B89, B90, B95)
B97	Valve-Flap, Large
B98	Gasket-Fitting, Intake, Large
B123	Bearing-Plain
B125	Bearing-Plain
B137	Screw-Hex Hd, 3/4-10 x 1-3/4 in

\* Part of gasket kit B96



Right Side Universal Intake Adapter

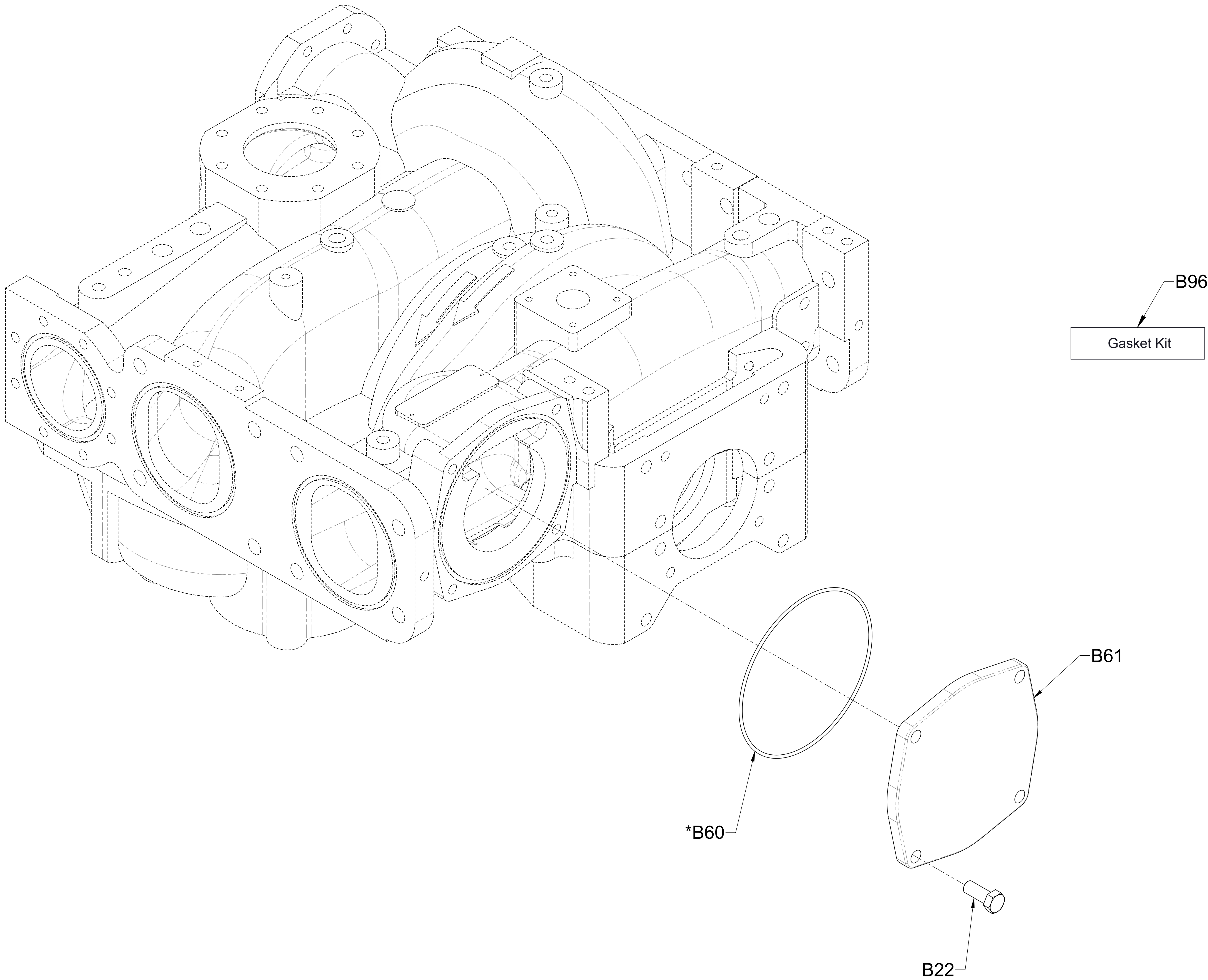


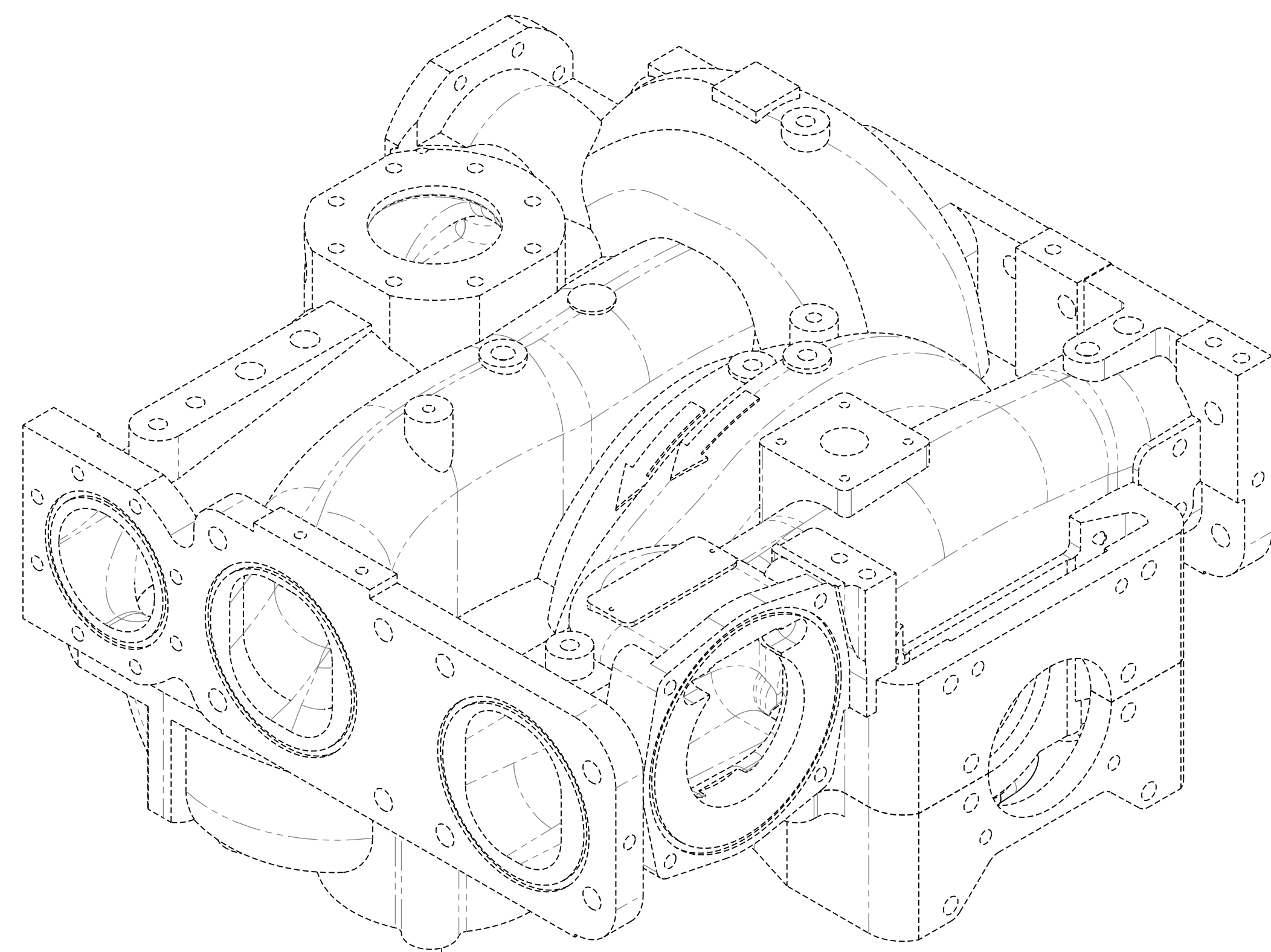
Right Side Large Rear Intake Adapter



Ref No.	Description
B22	Screw-Hex Hd, 1/2-13 x 1-1/4 in
*B60	O-Ring, 6-3/4 x 7 in
B61	Flange-Blind
B96	Gasket Kit (Contains B12, B15, B26, B27, B60, B81, B85, B86, B89, B90, B95)

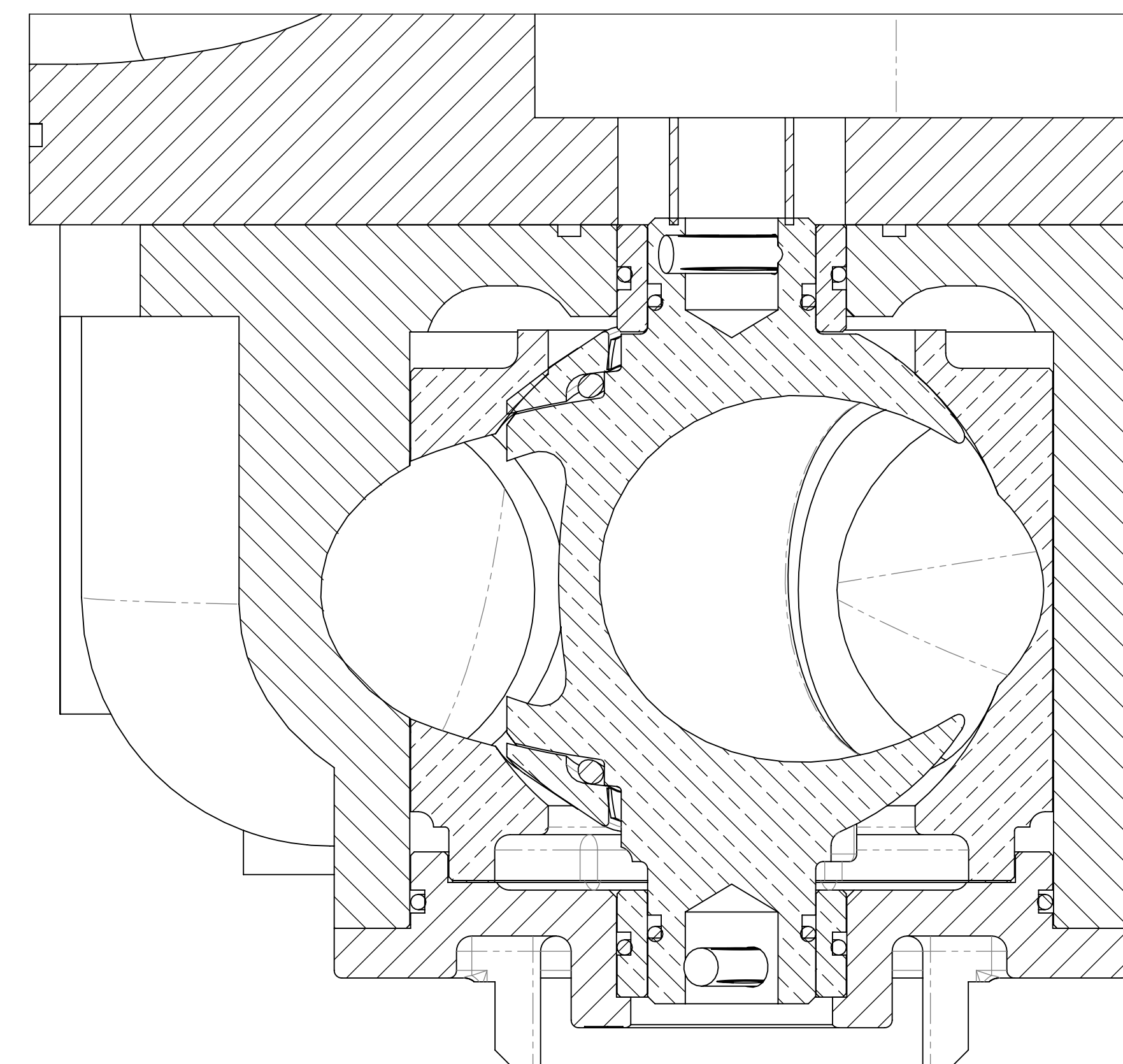
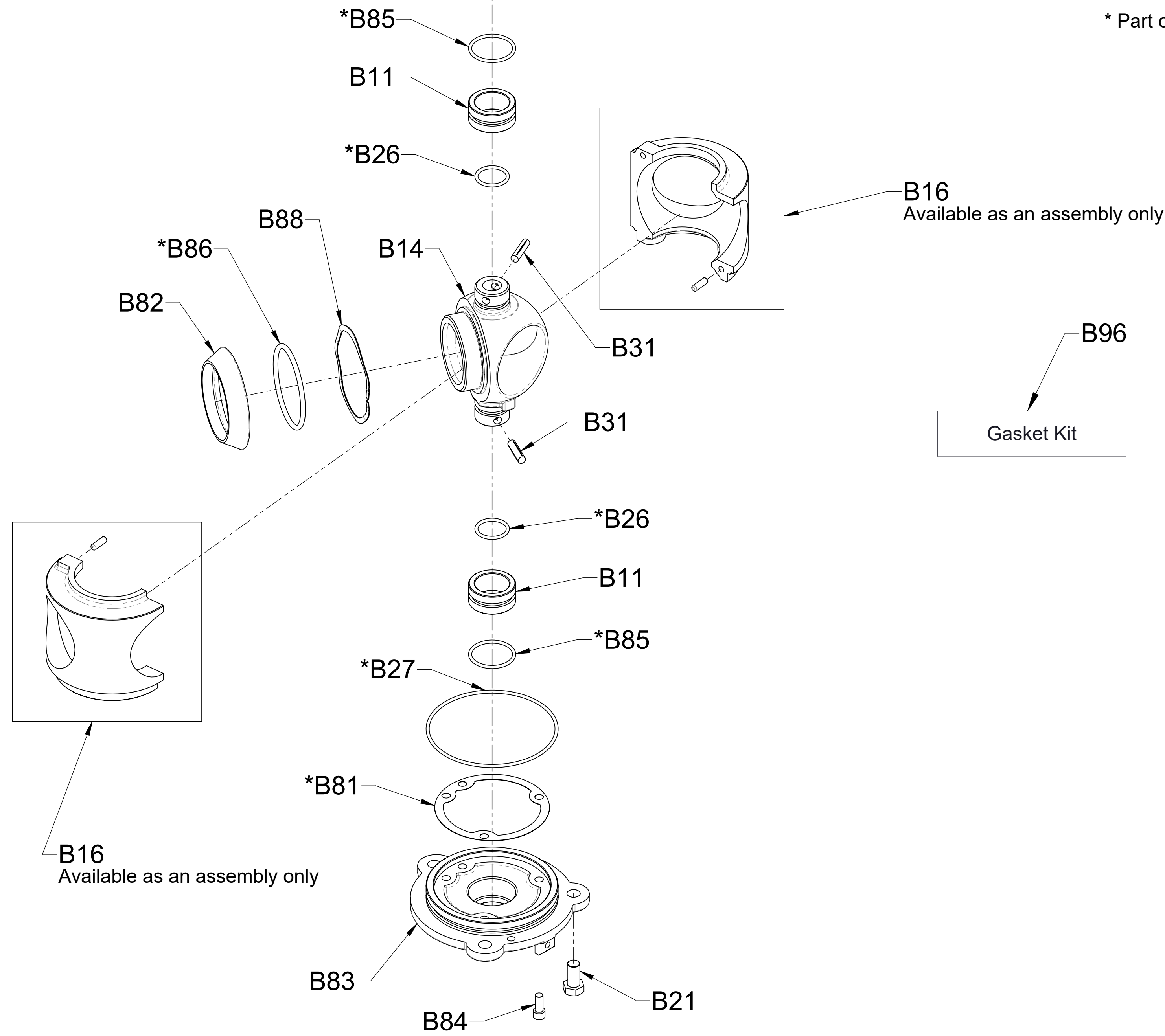
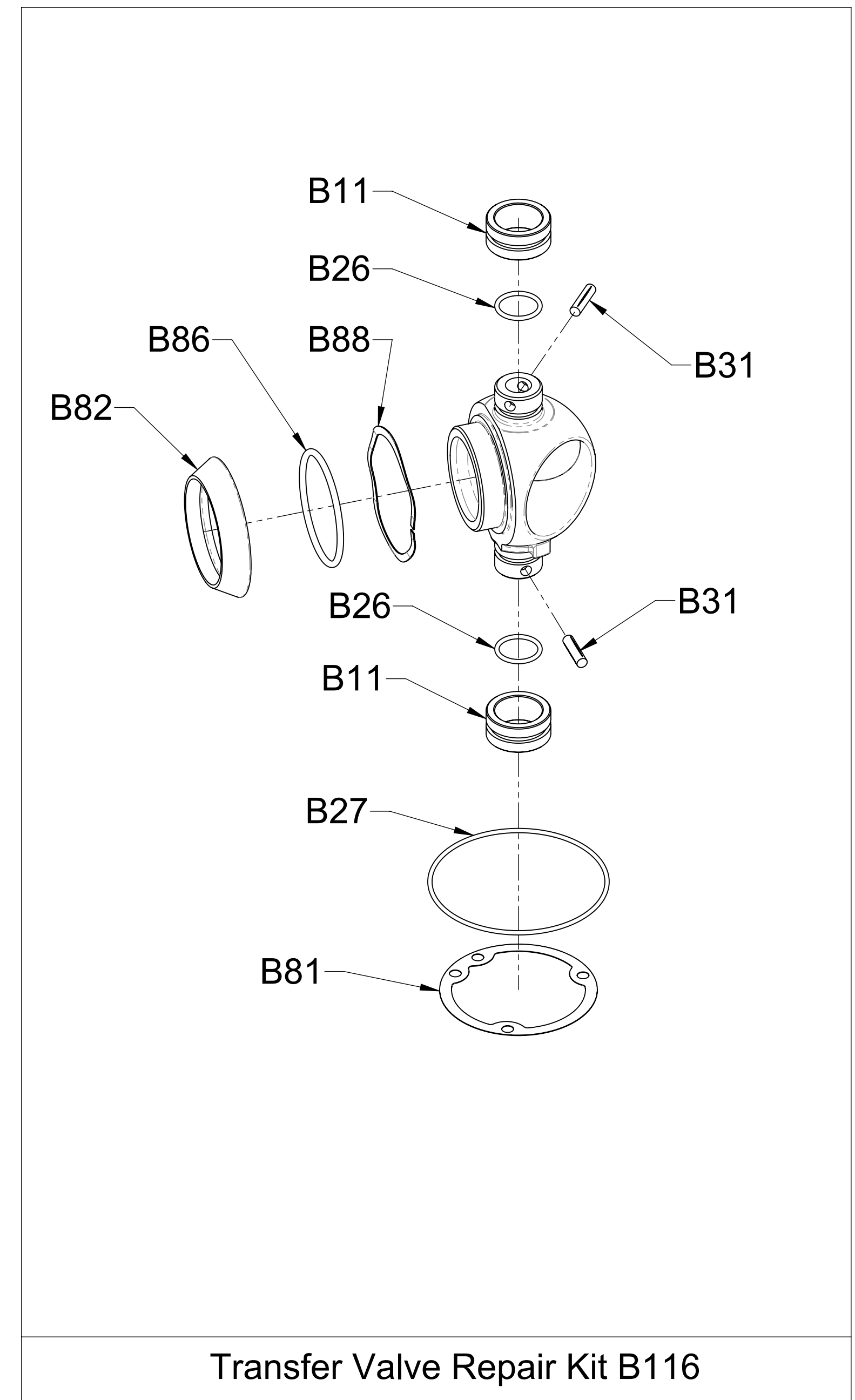
\* Part of gasket kit B96





Ref No.	Description
B11	Bushing-Stem
B14	Ball-Valve, Transfer
B16	Transfer Valve Housing Assembly
B21	Screw-Hex Hd, 1/2-13 x 1 in
*B26	O-Ring, 1-1/8 x 1-3/8 in
*B27	O-Ring, 5 x 5-1/4 in
B31	Pin-Groove, 5/16 x 1-1/4
*B81	Gasket-Housing, Transfer Valve
B82	Seal-Valve, Transfer
B83	Cover-Valve, Transfer
B84	Screw-Cap, Hex Soc Hd, 5/16-18 x 3/4 in
*B85	O-Ring, 1-5/8 x 1-7/8 in
*B86	O-Ring, 3-1/8 x 3-1/2 in
B88	Spring-Wave, Transfer Valve
B96	Gasket Kit (Contains B12, B15, B26, B27, B60, B81, B85, B86, B89, B90, B95)
B116	Transfer Valve Repair Kit (Contains B11, B26, B27, B31, B81, B82, B86, B88)

\* Part of gasket kit B96



Cross-Section View

**Transfer Valve Components**  
Used with rotary style transfer valve  
Actuator parallel (volume) position shown