

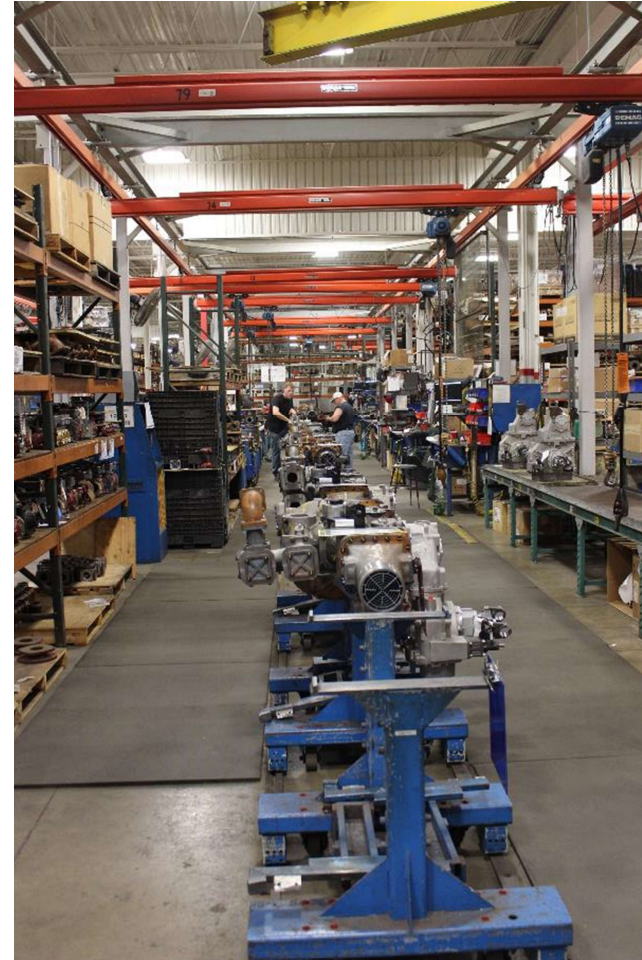


MAKING OF A SUTPHEN MODULE

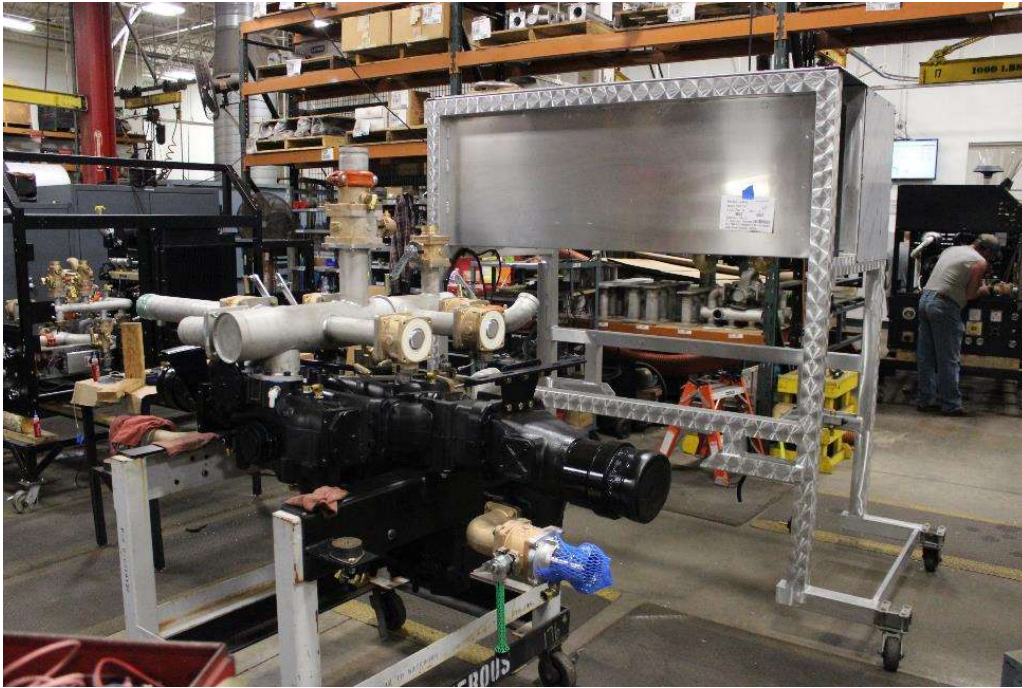


Waterous Pumps:

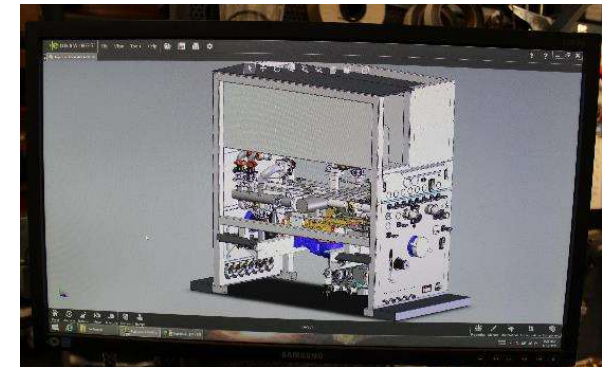
- **Castings from USA Foundries**
- **Machined in Waterous South St. Paul Factory**
- **Assembled in Waterous South St. Paul Factory**
- **Tested to Meet or Exceed NFPA Standards**



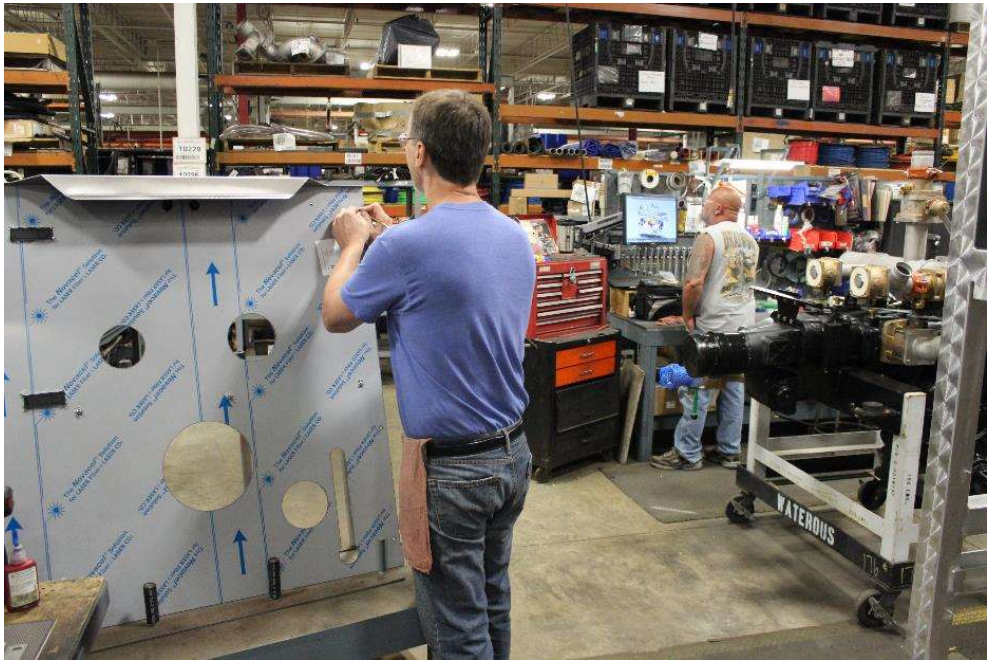
PUMP ASSEMBLY



Waterous CSUC20 Single Stage Pump

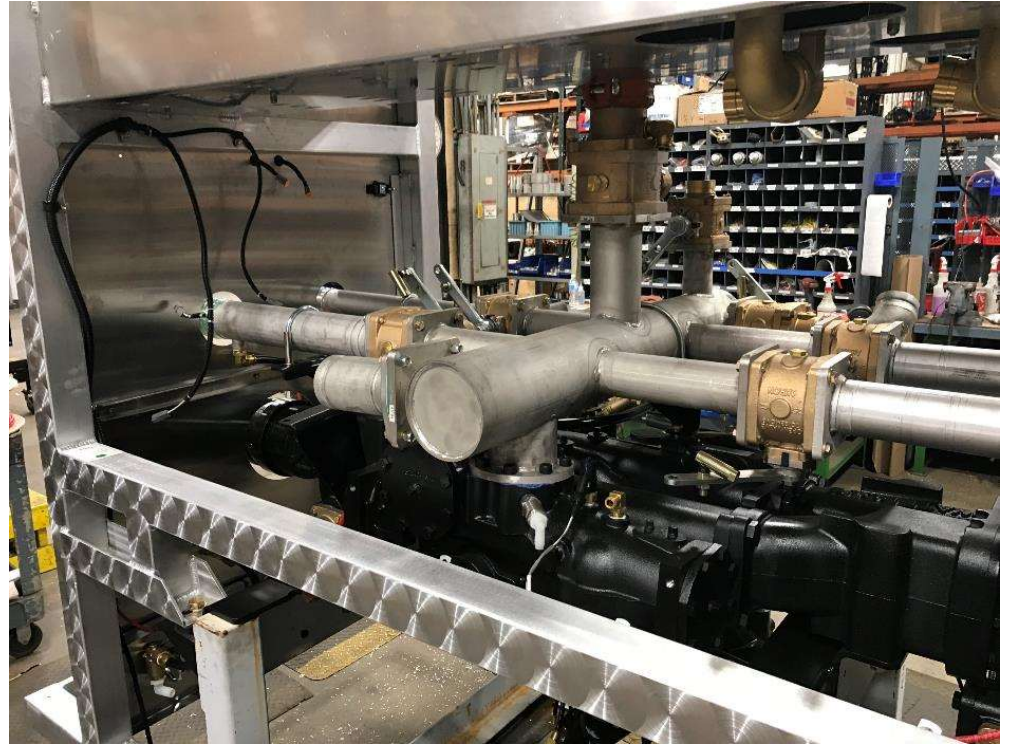
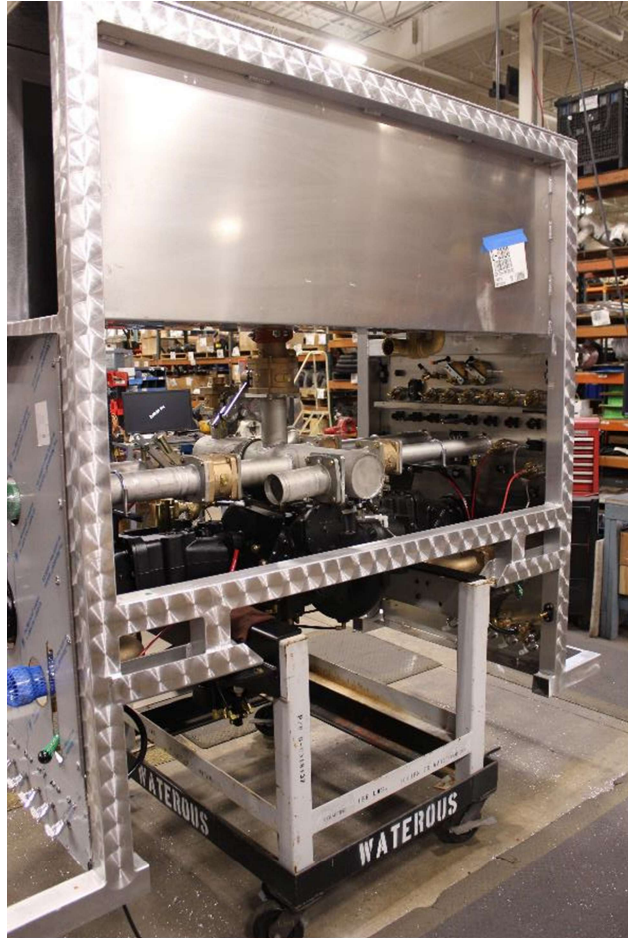


PUMP AND FRAME

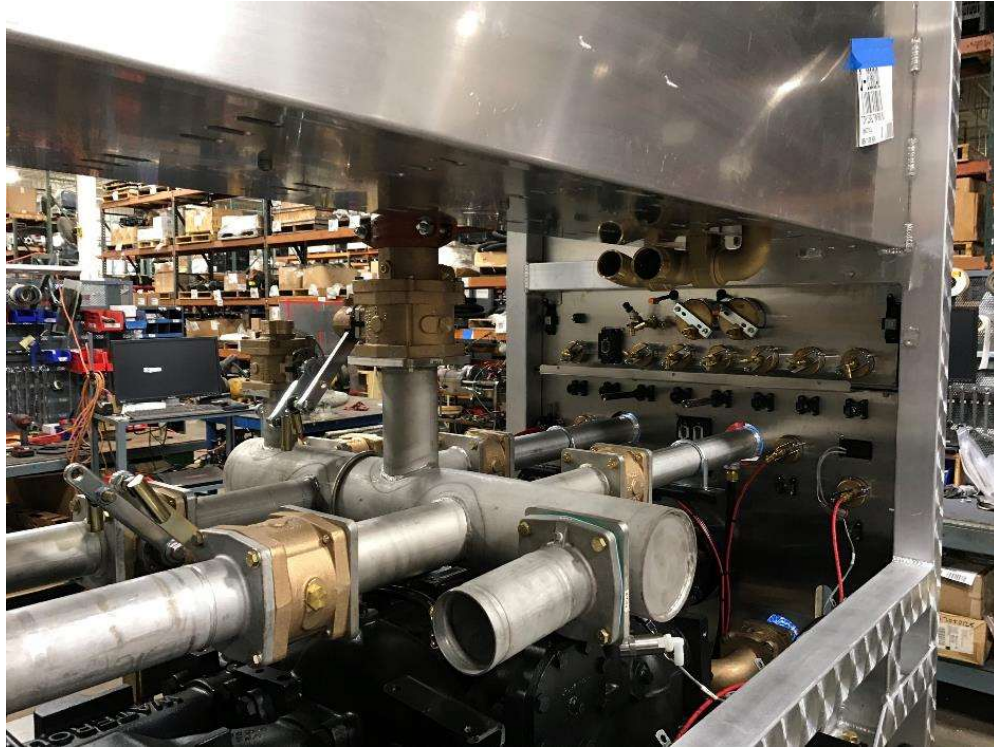


Following CAD Model for Assembly

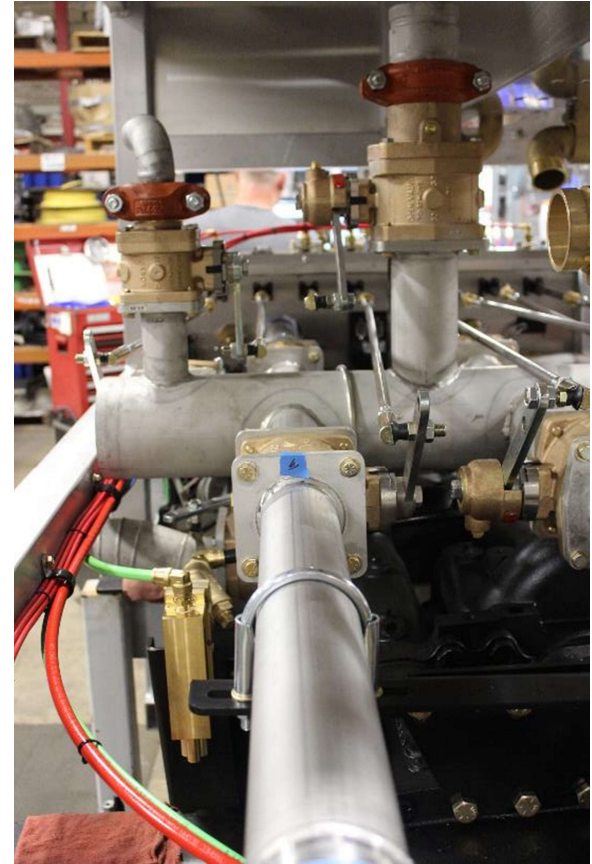
ASSEMBLY STARTS



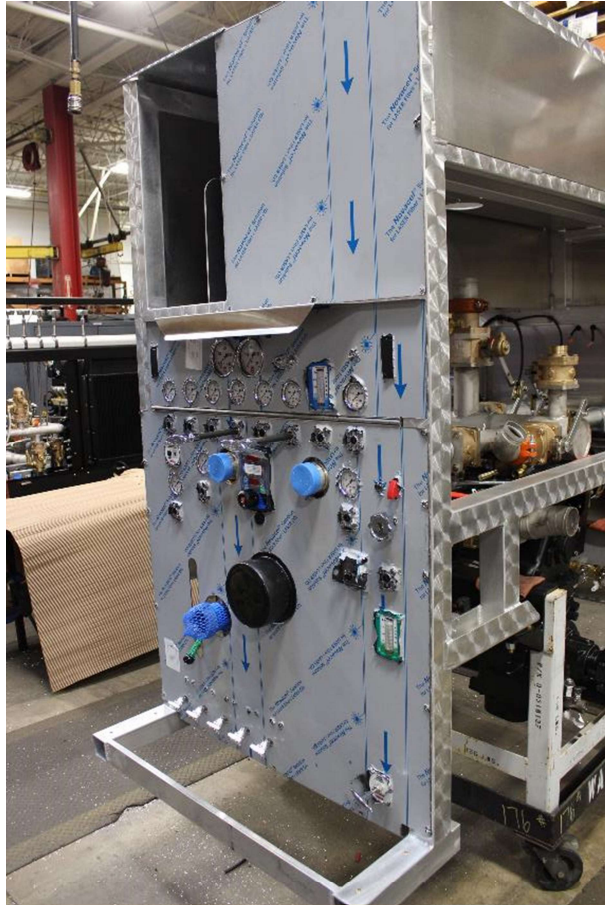
PUMP MOUNTED TO FRAME



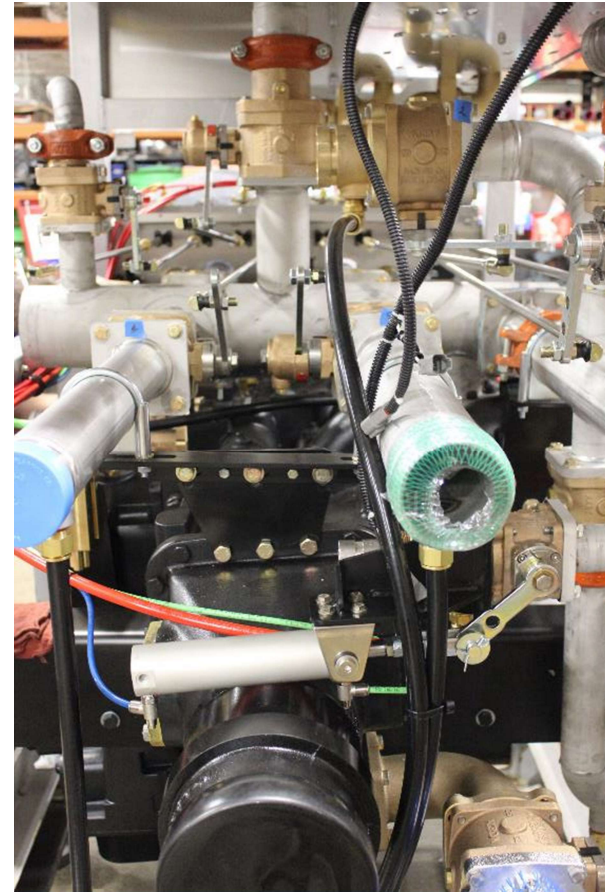
ASSEMBLY STARTS



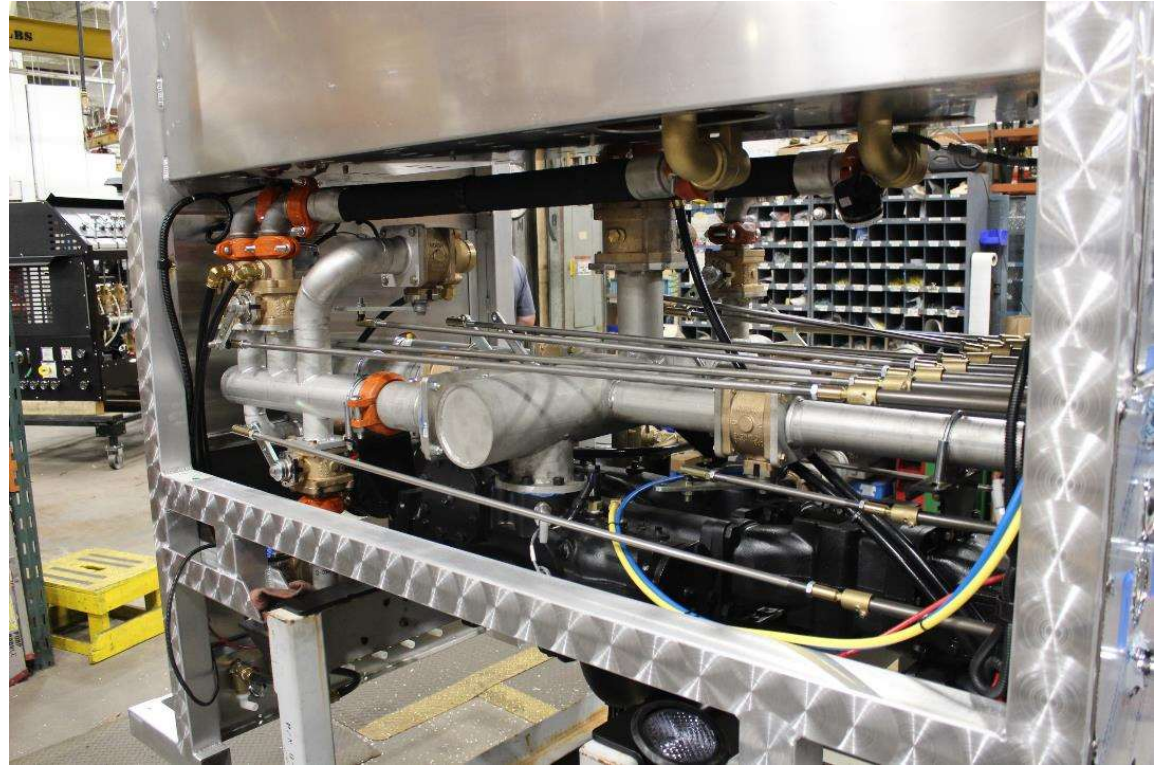
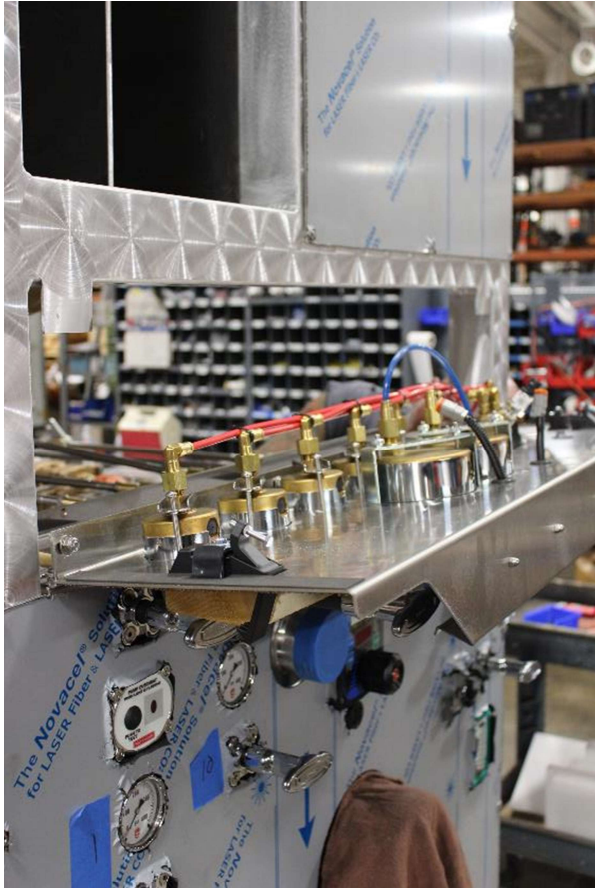
ASSEMBLY CONTINUES



OPERATOR'S PANEL ASSEMBLY



ASSEMBLY CONTINUES



ASSEMBLY CONTINUES



READY TO SHIP

WATEROUS HISTORY

Celebrate WATEROUS HISTORY

1844

Waterous began in 1844 as Waterous Engine Works Co., Ltd., founded by C. H. Waterous in Brantford, Ontario, Canada. Various types of machinery were built, including saw mill equipment and steam fire engines.

1886

Frederic L. and Frank J. Waterous were tasked with moving the Winnipeg manufacturing to a new facility south St. Paul, Minnesota. The new operation survives and flourishes to become Waterous Company.

1898

Waterous revolutionizes firefighting with the first gasoline-engine-driven fire pump.



Waterous Steam-Driven Fire Engine



1881

In 1881, the twin sons of C. H. Waterous set out for Winnipeg to organize another branch and within a few years, the Winnipeg operation had outgrown the local distribution facilities.

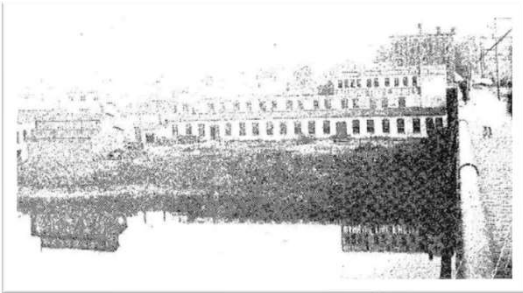


1886 - 1896

First Waterous factory in south St. Paul, Minnesota.



WATEROUS HISTORY



1896-1917

Waterous builds second factory in St. Paul, Minnesota



1917-1974

Waterous builds a new, much larger and more modern plant at 80 East Fillmore Avenue in St. Paul along rail shipping lines. The new plant is within a block of the Mississippi River.



1912

Waterous continues to build fire apparatus. These vehicles are delivered to Bridgeport, Connecticut and are known as the "Pride of Bridgeport."

1938

Three generations of Waterous products showcases a Waterous horse-drawn steam engine, Waterous self-propelled pumper and an apparatus equipped with a Waterous fire pump.



1929

Waterous completes and delivers its final fire truck. From that point on, the company's mission transitions to focus on fire pumps, hydrants and other firefighting equipment.

WATEROUS HISTORY



1958 A first-generation Waterous Mobile Training Unit is used to train firefighters and mechanics across the country.



1955 Waterous introduces several advances including flame-plated impeller hubs for superior wear protection. Waterous is still the only pump manufacturer to offer flame plating.



1965 Waterous is purchased by American Hoist and Derrick through a transfer of stock and becomes a wholly owned subsidiary of the company. Show is John E. Carroll, president of American Hoist and Derrick and Fred Waterous Sr.



1968 Waterous' Floto-Pump portable fire pump is introduced for the U.S. Forestry Service.



Groundbreaking ceremony is held for the Waterous plant located near the site of the original Waterous factory built in 1886.



1974 Construction is completed on the new Waterous office and factory. This new one-level, 140,000 square-foot manufacturing and office facility affords Waterous to modernize its manufacturing processes.

WATEROUS HISTORY

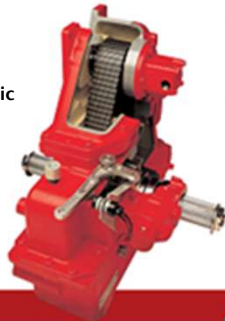
In the later 1970's, Waterous brings two additional product enhancements to the market.

1977



Ball Transfer Valve with a patented floating seal design that provides a smooth transfer to pressure or volume with either manual or electric switch operation

Y-Series Chain-driven transmission providing silent operation and multiple points of engagement.



2002

Due to the influx of new products, Waterous outgrows its facility. In, 2002, Waterous expands its factory, warehouse and office to accommodate the company expansion. The 210,000 square-foot factory and stunning new office is an added benefit to both employees and customers.



2008

Waterous continues to improve and redesign products to better serve the fire industry and introduces the Endurance vehicle-mounted pumps. Representing the next generation in pump thinking, the pumps offer unique combinations of enhanced functionality, lighter weight or more compact designs without sacrificing reliability or ease of operation.



1987

Waterous releases its first self-adjusting Mechanical Seal which provides superior sealing capabilities with no maintenance.

1989

Waterous is purchased by American Cast Iron Pipe Company (ACIPCO) and becomes a wholly-owned subsidiary of the company.



1999

Waterous introduces the Eclipse Compressed Air Foam System (CAFS).



2006

Waterous introduces the C10 Chain-driven transmission replacing the Y-Series. The C10 has an aluminum case with no oil pump and weighs 170 lbs less than the old Y-Series transmission.

1997

Waterous introduces foam proportioners called AQUIS.



WATEROUS HISTORY

2009

Waterous introduces the C20 Chain-drive transmission to replace the C10 Transmission. The C20 is thinner and weighs 30 lbs less than the C10. The change allows for clearances of the new exhaust requirements for apparatus.



2013

Waterous introduces the S200 Passport international-style pump that meets EN, NFPA and CCC Standards.



2016

Waterous introduces the touch panel screen called Tellurus.



2018

Waterous introduces ECLIPSE Gen 2.0 CAFSystem with Foamulators.



2011

Waterous releases an international-style, compact, rear-mounted HL Series Fire Pump. The HL is able to simultaneously flow high and low pressure.



2011

Waterous celebrates its 125th Anniversary.



2014

Waterous releases the Ultra-High Pressure CPK-5 pump that is used by the United States Air Force for ARFF applications.



2017

To continually manufacture the highest quality products, Waterous invests millions of dollars in its machining and processes including robots.



2019

Waterous introduces an industrial foam system called ULTRAFLOW. Up to 16 discharges can be controlled by the Tellurus digital control.



Waterous

BEST Waterous **RELIABLE**
Warranty Industry Leader
Seven Year
Quality MADE IN THE U.S.A. **BEST**
Best Pump Engineered
Quality PARTS
Best Pump Waterous
WARRANTY
MACHINED
IN THE U.S.A.
Reliable
Seven Year
Waterous
MADE IN THE U.S.A.
U.S.A. Quality
PARTS Waterous
BEST PUMP

YEAR
WARRANTY

BEST PUMP. BEST WARRANTY.

THE ANATOMY OF A WELL-BUILT FIRE PUMP

CSU Single Stage Pump

1

Wear Ring – A pump's wear rings ensure your pump maintains optimal performance. Since the 1970s, Waterous has manufactured labyrinth reverse flow wear rings. The labyrinth track helps reduce flow by forcing water to pivot before flowing back into the eye of the impeller. This prevents water from getting trapped in the pump, ultimately making the impeller more efficient.

2

Separable Impeller Shaft – Downtime is detrimental to a fire apparatus. A pump containing a separable impeller shaft can help prevent unwanted downtime. If a problem arises, fire brigades can remove the shaft without disassembling the entire pump. This process can slash both downtime and maintenance costs.

3

Casting – The iron cast serves as the outermost layer of a fire pump. It must be manufactured with quality and care. Waterous casts and machines all their pumps in foundries and facilities in the United States. This allows for increased quality control of material, parts and the overall pump.

4

Impeller Performance – A water pump is always at the mercy of its water supply. Sand and other debris in the water is the number one cause of water pump wear. That's why we designed our flame-plated impellers with particles of tungsten carbide. These particles create an ultra hard surface on the impeller that is more resistant to abrasion from debris. Our flame-plated impeller can last four times longer than a non-flame-plated impeller.

5

Service and Maintenance – When the unpredictable happens, it's important to have all service and maintenance options at your disposal so your fire teams can cut significant downtime to their fleet and get back to serving the community.

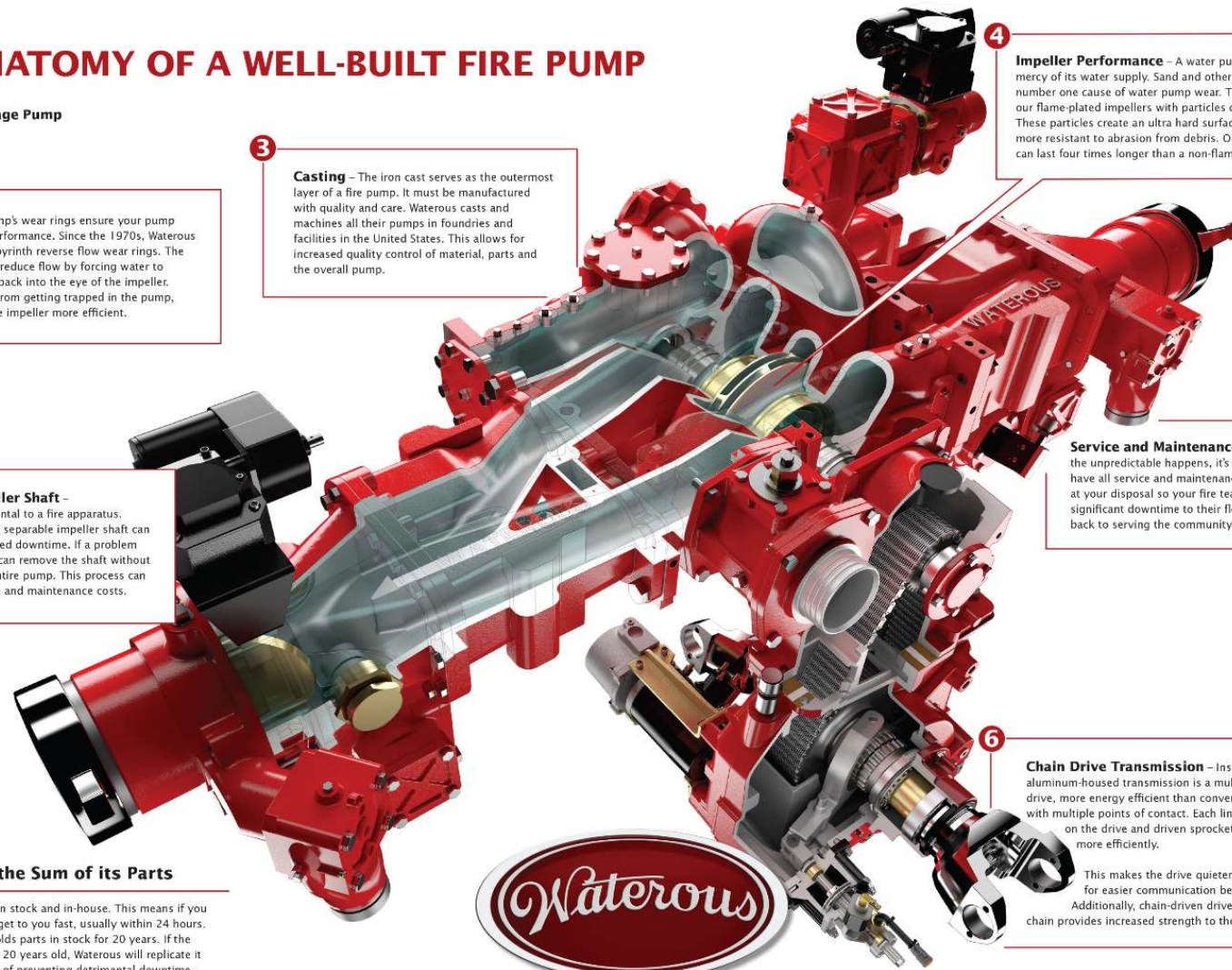
6



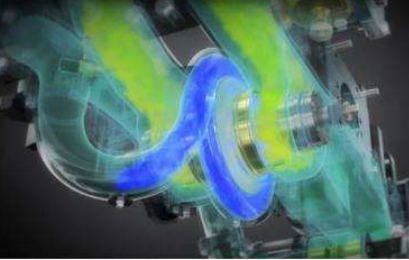



Chain Drive Transmission – Inside every Waterous aluminum-housed transmission is a multi-point chain drive. The drive, more energy efficient than conventional drives, operates with multiple points of contact. Each link engages with a tooth on the drive and driven sprocket, transferring power more efficiently.

This makes the drive quieter, which in turn allows for easier communication between the fire team. Additionally, chain-driven drives are more durable as the chain provides increased strength to the transmission.

Greater Than the Sum of its Parts

Waterous has the parts in stock and in-house. This means if you need a new part, it will get to you fast, usually within 24 hours. In addition, Waterous holds parts in stock for 20 years. If the pump/part is more than 20 years old, Waterous will replicate it for you - all in the effort of preventing detrimental downtime.



		
<p>3D INTERACTIVES LEARN MORE</p>	<p>WATEROUS POSTERS LEARN MORE</p>	<p>VIDEOS LEARN MORE</p>
		
<p>TALKING POINTS LEARN MORE</p>	<p>FRICITION LOSS APP LEARN MORE</p>	<p>FAQS LEARN MORE</p>

Waterous
UNIVERSITY
SOUTH SAINT PAUL, MINNESOTA



www.waterousco.com

FOLLOW US ON:   

FREE INFORMATION