



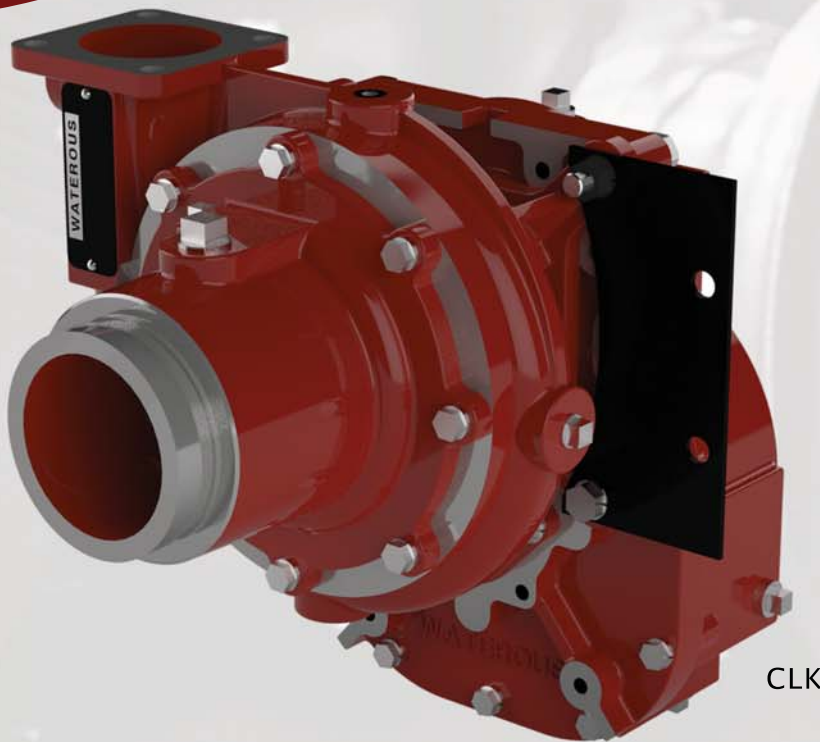
FOAM SYSTEMS

CAFSystems™

FIRE PUMPS

VEHICLE-MOUNTED PUMP

CL Series



CLK

Transmission
Options



CLPA



CLT

The CL Series offers a one-piece design featuring intake and discharge arrangements in a wide variety of options to meet your requirements.

PERFORMANCE

- 500 GPM (2000 l/min)
- Maximum Pressure: 350 PSI (24 bar)

AVAILABLE MOUNTING

- Equipped with K Series Gear Drive Transmission, T Series Direct Mount or PA Chain Driven PTO

SPECIFICATIONS – PTO DRIVEN: MODEL CL

CL Pump Performance							
Rating	GPM	l/min	l/sec	PSI	bar	kPa	MPa
NFPA	500	2000	30	150	10	1000	1.0

Pump Features

Casing:

One-piece, high-tensile ductile iron (bronze optional on CLV only).

Impeller:

Bronze, fully-enclosed, double-hubbed to balance hydraulic thrust, mechanically-balanced to eliminate vibration.

Wear Rings:

Replaceable wear rings to increase pump life and keep maintenance costs at a minimum.

Impeller Shaft:

Stainless steel, heat treated, ground to precise size, and polished under shaft seal. Fully supported by anti-friction bearings.

Shaft Seal:

Mechanical Seal is standard.

Intake Connection (Choice of the Following):

Type	Model	Sizes
Threaded End Intake	CLR	4-inch NH or BSP
Victaulic® Intake	CLV	4-inch

Discharge Connection:

5-inch discharge flange

Bearings:

All bearings are oil or grease lubricated, ball-type, located outside the pump casting to accurately align and support the impeller shaft assembly. Ball bearings are deep-groove type designed to carry both radial and axial thrust.

Approximate Weight and Dimensions

(Width & Height dimensions refer to picture shown on front page - less fittings and valves)

Pump/Transmission Model	Intake	Length in/cm	Width in/cm	Height in/cm
CLRK	4 in. NH	18-1/8 (46.0)	15-1/8 (38.4)	21-1/4 (54.0)
	4 in. BSP	18-3/4 (47.6)	15-1/8 (38.4)	21-1/4 (54.0)
CLRT	4 in. NH	18-1/4 (46.4)	17-3/4 (45.1)	24-3/8 (61.9)
	4 in. BSP	18-7/8 (47.9)	17-3/4 (45.1)	24-3/8 (61.9)
CLVK	4 in. Victaulic®	18-3/4 (47.6)	15-1/8 (38.4)	21-1/4 (54.0)
CLVT	4 in. Victaulic®	18-7/8 (47.9)	17-3/4 (45.1)	24-3/8 (61.9)

Warranty

Waterous Five-Year Limited Warranty

Conditions of Sales

For details on Waterous Condition of Sales, refer to F-2190, *Conditions of Sales* located on the Waterous web site at www.waterousco.com or by contacting Waterous.

Optional Equipment

- Priming System, see F-2218
- Pressure Control Systems:
- Discharge Relief Valves, see F-897
- Intake Relief Valves, see F-2191
- Corrosion Protection – Zinc Intake Screens and Anodes
- Overheat Protection Manager, see F-2422
- Drain Valves, see F-1158
- Discharge Valves, see F-1161
- Five-Year Limited Warranty with Total Protection Package (TPP-5)
- Tachometer drive, operates at ½ input shaft speed.
- Transmissions Available:

K Series

The K Series Transmission is normally used when a truck transmission mounted power take-off is selected as the pump drive.

Housings: Close-grained, gray iron

Drive Ratios: 1.62, 1.97, 2.14, 2.55, 2.79, 3.40, 4.00, 4.79

Gears: Helical, precision cut, crown shaved for proper load distribution and quiet operation.

T Series

The T Series Transmission is supplied when the pump is to be mounted directly to the engine bell housing. This provides a clean, compact arrangement and allows for complete pump and roll capability.

T Transmissions are available in SAE 2, 3, 4, or 5 bell housing adapters.

Housings: Close-grained, gray iron

Drive Ratios: 1.62, 1.97, 2.14, 2.55, 2.79, 3.40, 4.00, 4.79

Gears: Helical, precision cut, crown shaved for proper load distribution and quiet operation.

Industry Leading Sales and Support

When you purchase equipment, not only do you get quality products, you get quality service. Our expert service technicians are the best in the business and they are always happy to answer any service questions you might have.

Sales/Applications Assistance
Phone: 651-450-5234 (Press 3)
pumpsales@waterousco.com

Service Assistance
Phone: 651-450-5200
Fax: 800-488-1228