

# SPECIFICATIONS – MOTOR PUMPS: E500 SERIES

## Specialized Pump Capabilities for Specialized Attack Vehicles



The E500 Series Motor Pump is specifically designed for mounting on specialized attack vehicles. The diesel-powered motor pump combines the muscle of Waterous vehicle-mounted pumps with the convenience of its own power source. Available in two models: E501 or E511:

E500 Pump Performance							
E501-C							
	FLOW			PRESSURE			
	GPM	l/min	l/sec	PSI	bar	kPa	MPa
Max Flow	110	420	6.6	100	7	700	.7
Max Pressure	50	200	3.3	400	28	2800	2.8
E511-C							
	FLOW			PRESSURE			
	GPM	l/min	l/sec	PSI	bar	kPa	MPa
Max Flow	275	1100	18	50	3.5	350	.350
Max Pressure	100	400	6.5	190	13	1300	1.3

### Pump Specifications:

**Intake:**

**E501-C:** 2 inch female NPT

**E511-C:** 3 inch female NPT (Optional 3 inch Victaulic Adapter)

**Discharge:**

**E501-C:** 1-1/2 inch female NPT

**E511-C:** 2 inch female NPT (Optional 2 inch Victaulic Adapter)

**Volute Body and Head:**

High-strength aluminum alloy protected by anodizing for corrosion protection.

**Impeller:**

High-strength, corrosion-resistant bronze, fully enclosed, double-hubbed to balance hydraulic thrust, mechanically balanced to eliminate vibration.

**Impeller Shaft:**

Integral driven gear and shaft made of hardened steel, nickel-plated for wear and corrosion resistance.

**Wear Rings:**

Long wearing bronze. Easy to replace when required to restore original pump efficiency.

**Drive Shaft and Gear:**

High-strength stainless steel shaft and a heat-treated ductile iron gear.

**Shaft Seal:**

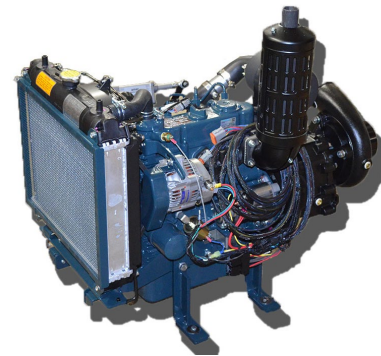
Spring-loaded mechanical type. Wear and heat resistant silicon-carbide.

**Gear Case:**

Two-gear speed increaser utilizing high-strength aluminum alloy case. Helical cut gears for reduced wear and noise and anti-friction bearings throughout.

### Dimensions and Weights:

Model	Length (in/cm)	Width (in/cm)	Height* (in/cm)	Weight (lb/kg)
E501-C	34.39 (87.4)	20.8 (52.8)	25 (63.5)	252 (115)
E511-C	35.28 (89.6)	20.8 (52.8)	25 (63.5)	237 (108)



### Engine Specifications:

**Engine:**

Kubota, Model D902-E3B, Super Mini Series, in-line 3-cylinder, water-cooled, naturally aspirated delivering a maximum output of 24.8 hp (18.5 kw) @ 3600 RPM, 54.8 cu. in. (899 cc) displacement, 4-cycle, diesel fueled.

**Lubrication:**

Pressure fed with spin on filter.

**Starter:**

12-14 volt, 1.2 kW

**Emission Regulation:**

Tier 4

**Alternator:**

12 VDC, 40 AMP

### Options and Accessories:

**Priming System:**

The priming system consists of either a Waterous' hand or electric primer shipped loose for remote mounting.

**Exhaust System:**

Spark Arrestor

**Control Panel:**

- New Control Module - Allows the operator to change operating parameters electronically with a touch of a button.



- No Panel Option



# MOTOR PUMPS: E500 SERIES

## Performance Curves:

