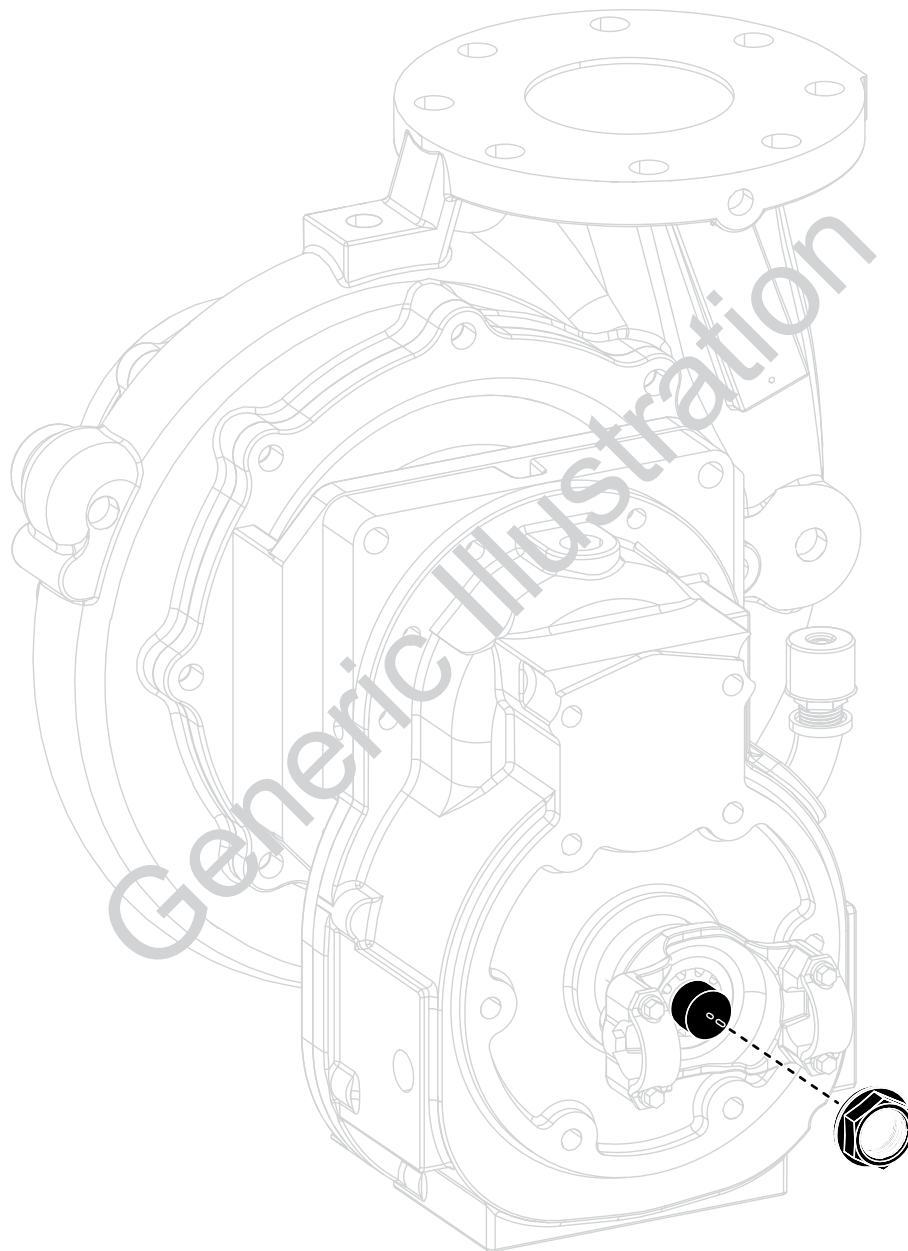
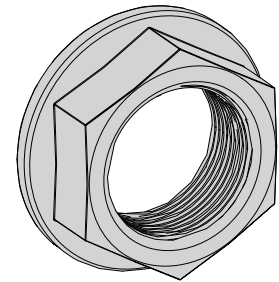


## Technical Bulletin No. 0129

## Drive-Shaft Fastener Torque Specification



### V3160



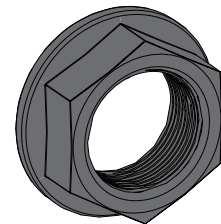
1-1/4 inches, Zinc Finish



475 to 525 ft-lb

610 to 712 N·m

### V3161



1 inch, Phosphorus Finish



400 to 450 ft-lb

542 to 611 N·m

Determine the fastener that you are using and tighten it to the proper specification.